

# KIC 007583299

## Q1-17 DR25 TCE Parameters

TCE	Run Type	KOI?	Period (Days)	Epoch (BKJD)	Depth (ppm)	Duration (Hours)	MES	SNR	$R_{\star}$ ( $R_{\odot}$ )	$T_{\star}$ (K)	$R_p$ ( $R_{\oplus}$ )	$S_p$ ( $S_{\oplus}$ )
007583299-01	OBS	No	2.595737	132.408549	20.9	6.644	9.1	8.5	1.48	6406	0.81	2198.50

## Robovetter Results

TCE	Run Type	Disp	Score	N	S	C	E	Comments
007583299-01	OBS	FP	0.00	1	0	0	0	LPP_DV—LPP_ALT—MOD_NONUNIQ_DV—MOD_NONUNIQ_ALT—CENT_SATURATED

**Notes:** OBS = Observed. INJ = Injected. INV = Inverted. SCR = Scrambled.

N = Not Transit-Like. S = Stellar Eclipse. C = Centroid Offset. E = Ephemeris Match.

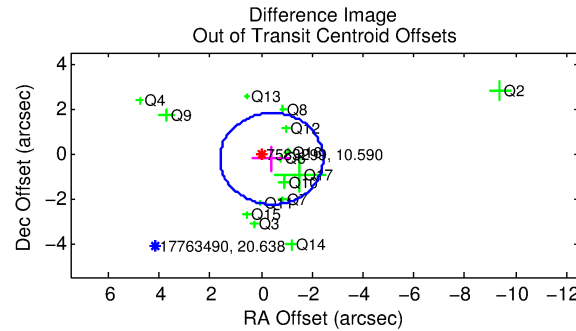
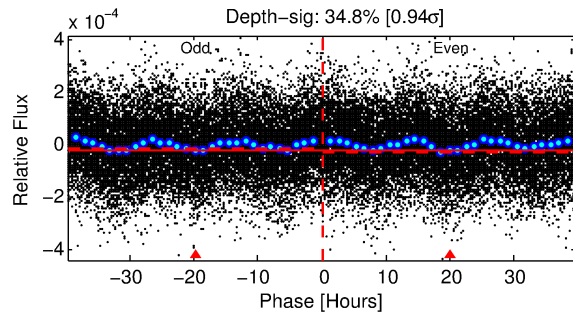
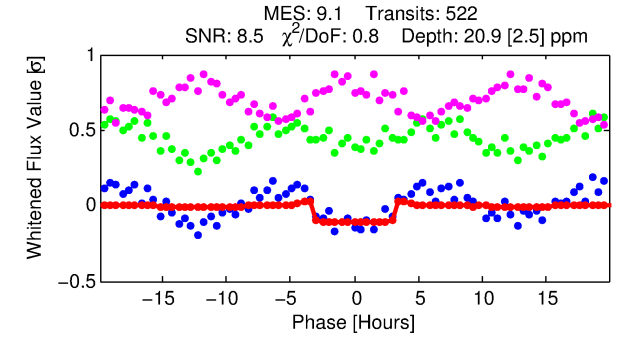
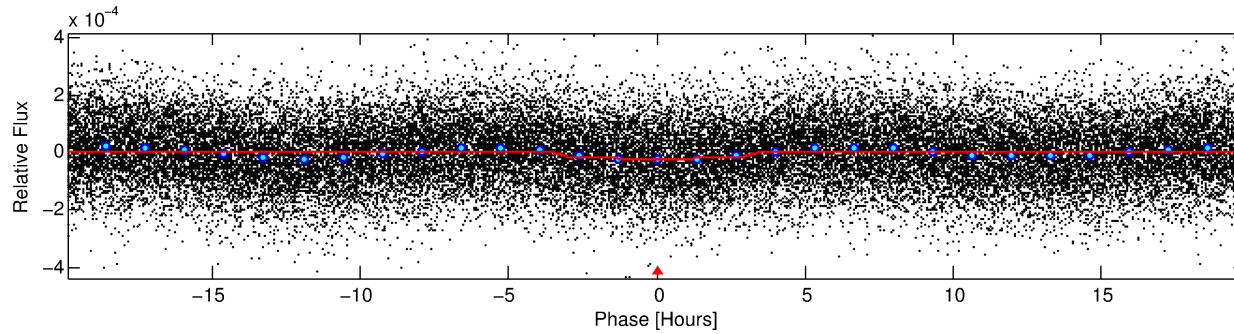
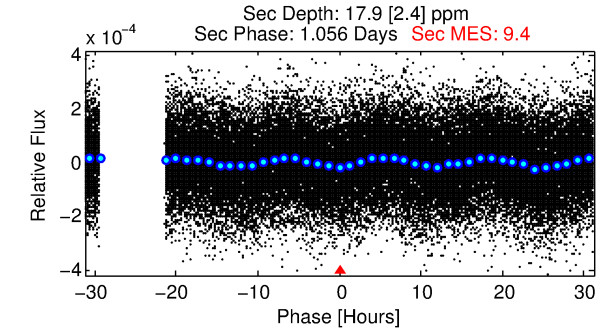
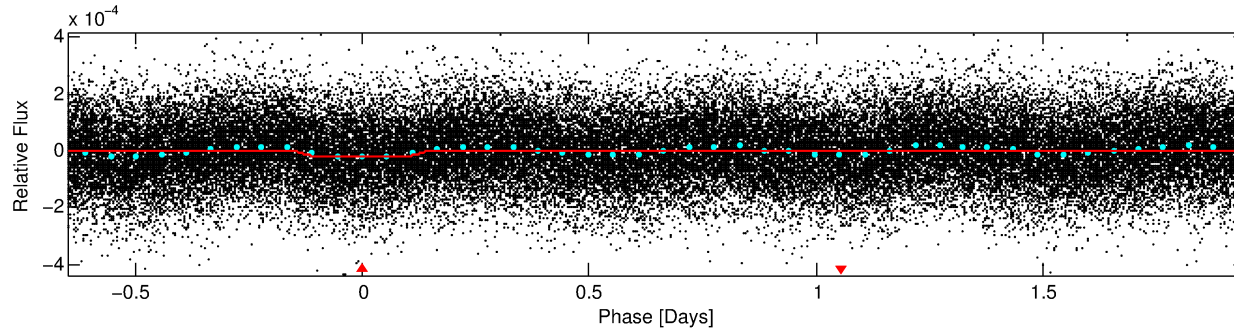
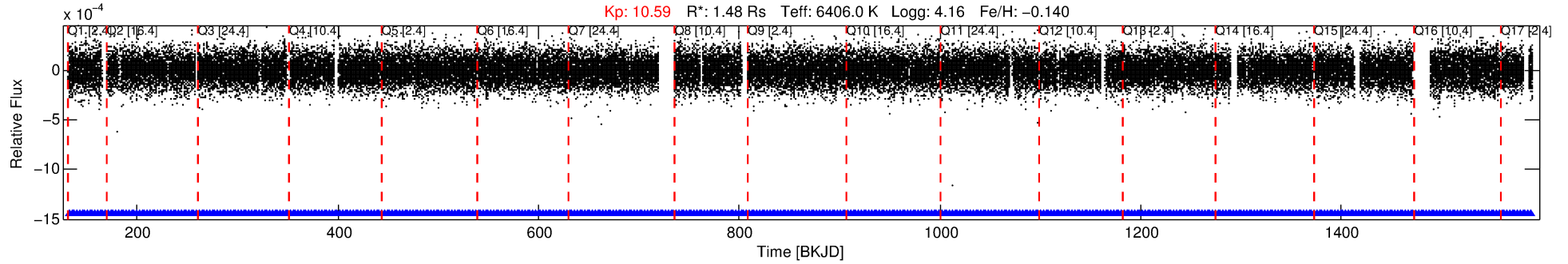
See [http://exoplanetarchive.ipac.caltech.edu/docs/API\\_kepcandidate\\_columns.html#proj\\_disp\\_col](http://exoplanetarchive.ipac.caltech.edu/docs/API_kepcandidate_columns.html#proj_disp_col) for comment definitions.

## Ephemeris Match Information For 007583299-01

No Significant Match Found

# DV One-Page Summary

KIC: 7583299 Candidate: 1 of 1 Period: 2.596 d



## DV Fit Results:

Period = 2.59574 [0.00002] d  
Epoch = 132.4085 [0.0046] BKJD  
Rp/R\* = 0.0050 [0.0010]  
a/R\* = 1.55 [0.94]  
b = 0.92 [0.18]  
Seff = 2198.50 [899.88]  
Teq = 1746 [179] K  
Rp = 0.81 [0.29] Re  
a = 0.0388 [0.0100] AU  
Ag = 22.90 [12.76] [1.72σ]  
Teffp = 5905 [632] K [6.33σ]

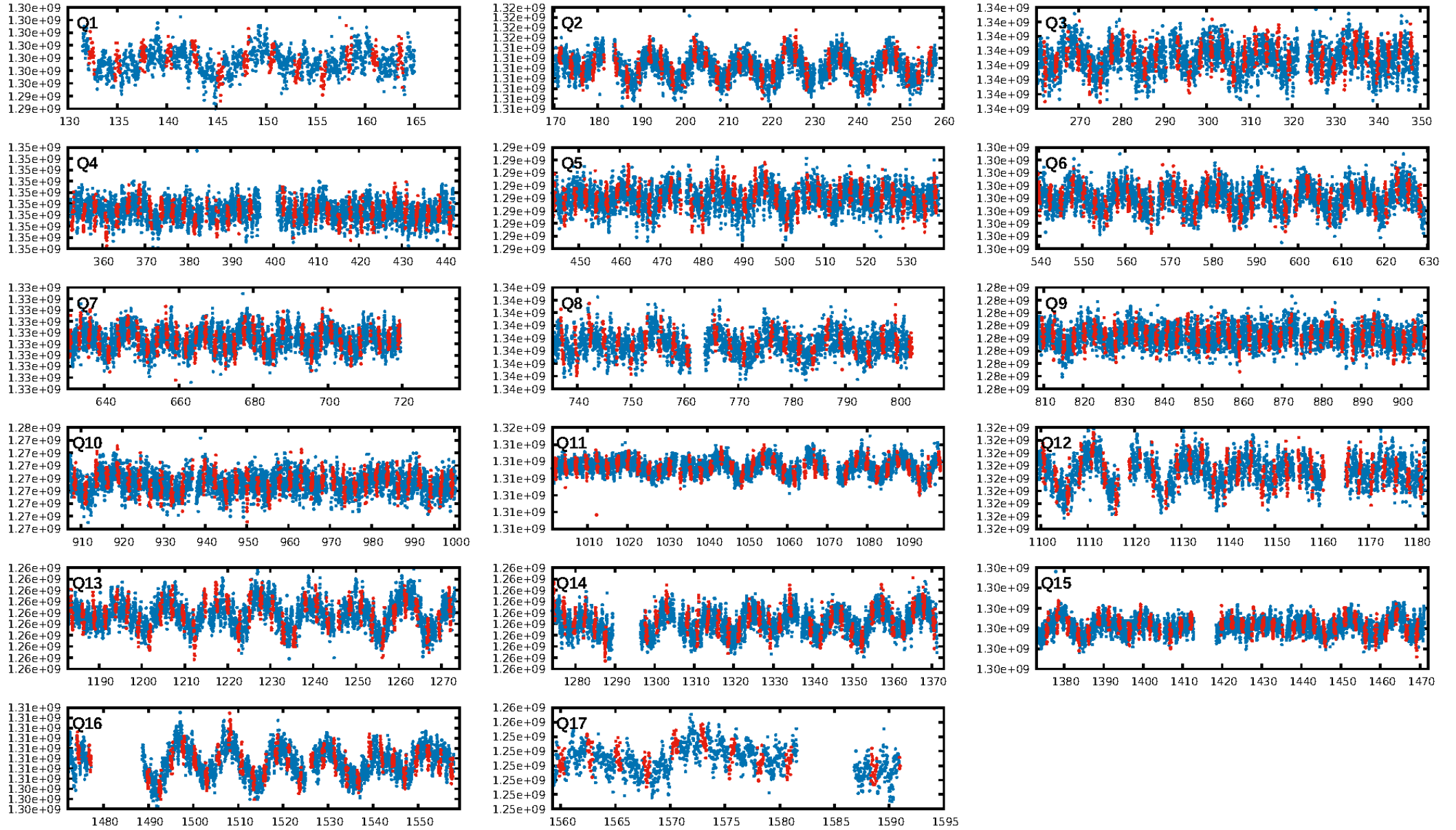
## DV Diagnostic Results:

ShortPeriod-sig: N/A  
LongPeriod-sig: N/A  
ModelChiSquare2-sig: N/A  
ModelChiSquareGof-sig: N/A  
Bootstrap-pfa: 1.59e-15  
RollingBand-fgt: 1.00 [499/499]  
GhostDiagnostic-chr: N/A  
Centroid-sig: 0.0%  
Centroid-so: 1.506 arcsec [2.71σ]  
OotOffset-rm: 0.477 arcsec [0.70σ]  
KicOffset-rm: 0.951 arcsec [1.30σ]  
OotOffset-st: 4/4/4/3 [15]  
KicOffset-st: 4/4/4/3 [15]  
DiffImageQuality-fgm: 0.73 [11/15]  
DiffImageOverlap-fno: 1.00 [17/17]

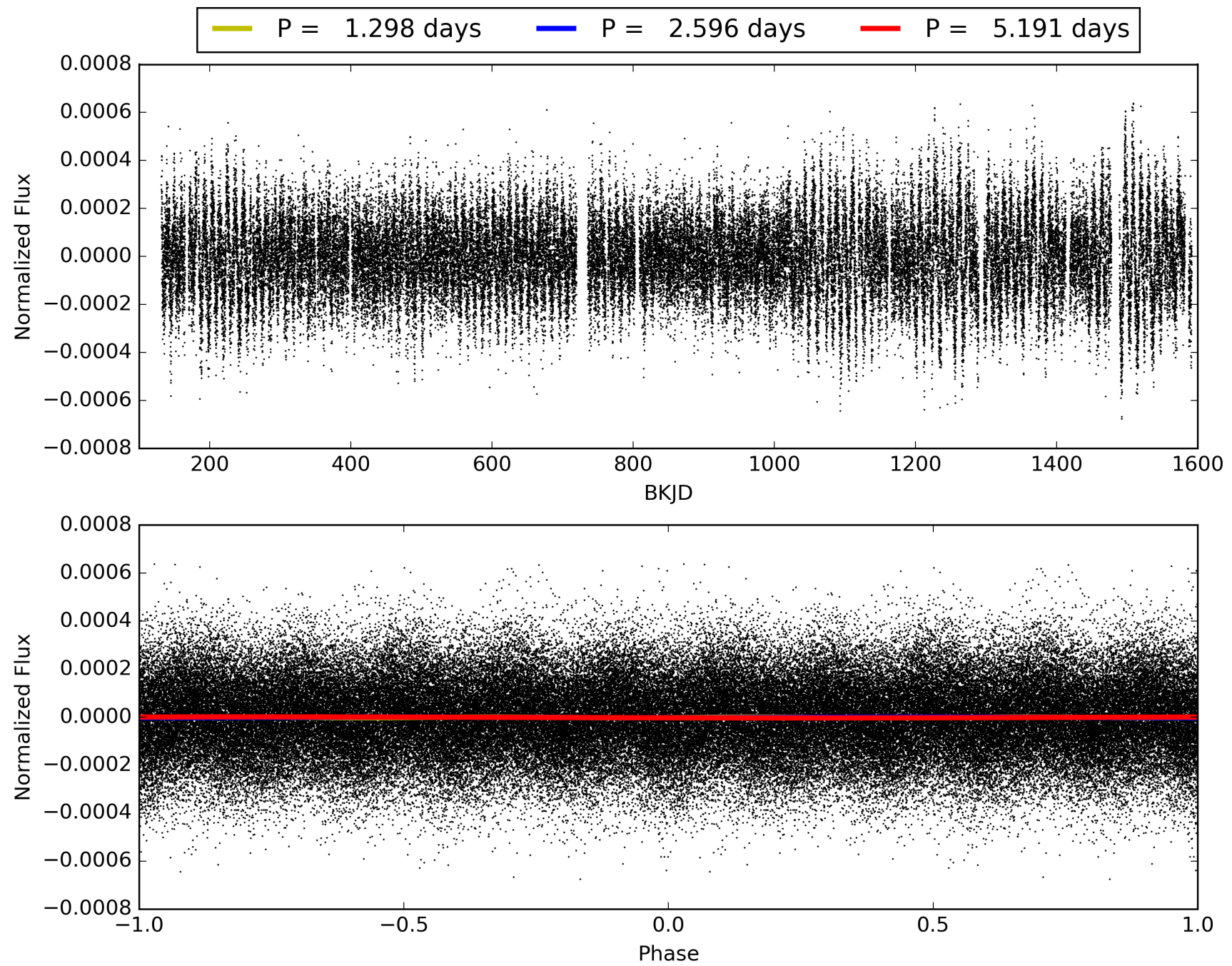
Software Revision: svn+ssh://murzim/repo/soc/tags/release/9.3.42@60958 -- Date Generated: 01-Feb-2016 12:09:44 Z

This Data Validation Report Summary was produced in the Kepler Science Operations Center Pipeline at NASA Ames Research Center

# TCE 007583299-01, PDC Light Curves



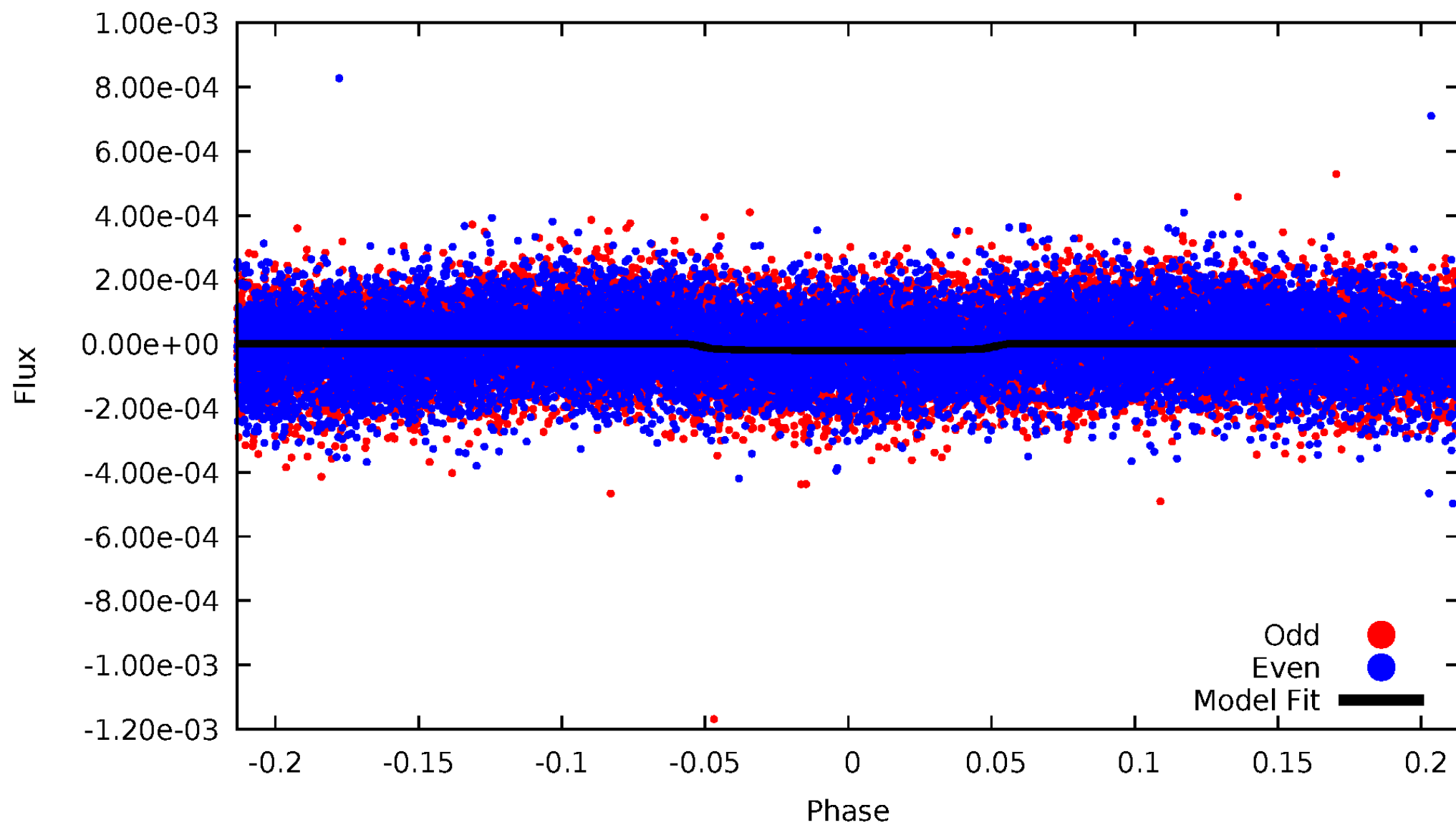
TCE 007583299-01





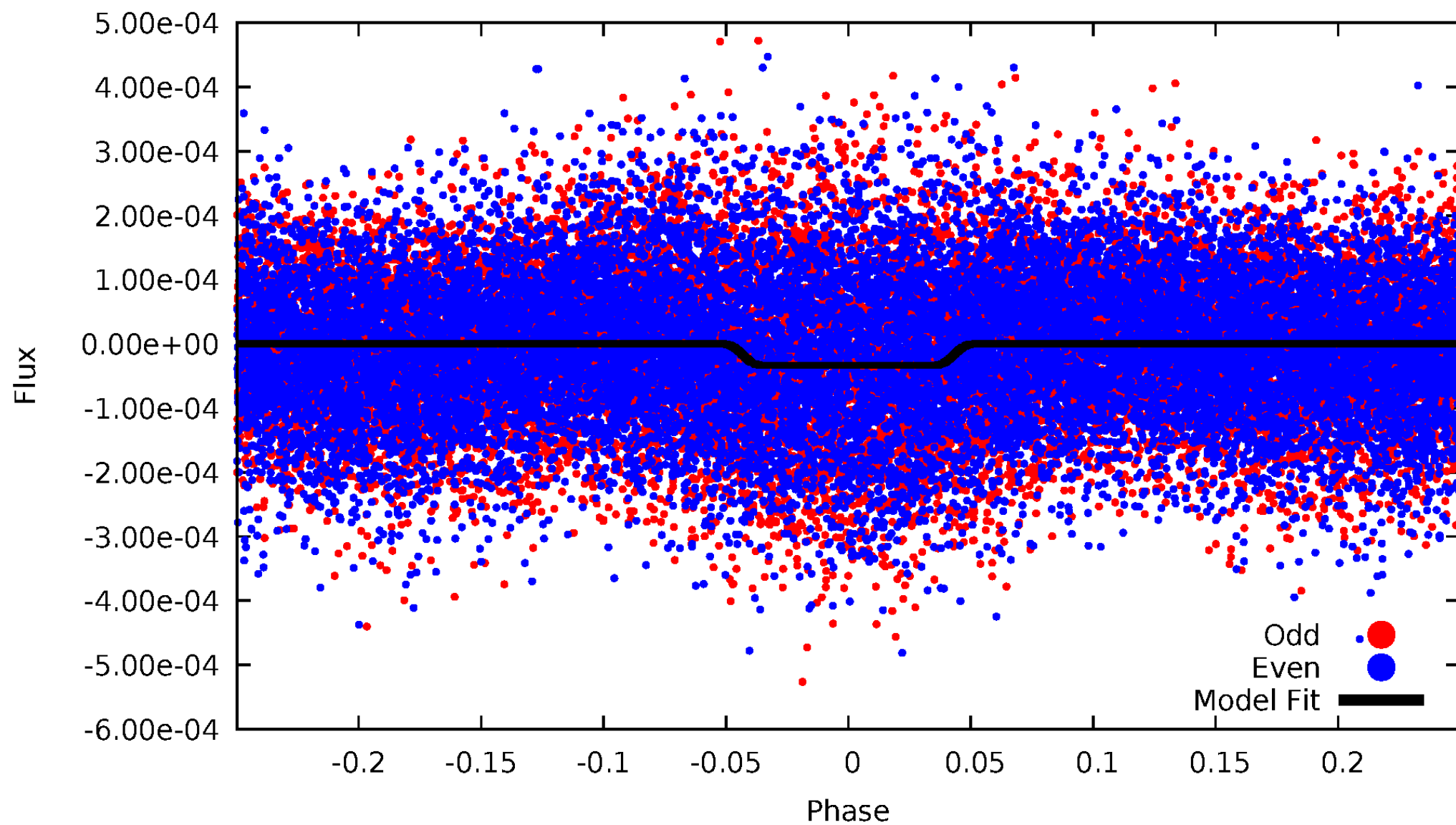
DV Odd/Even

TCE 007583299-01



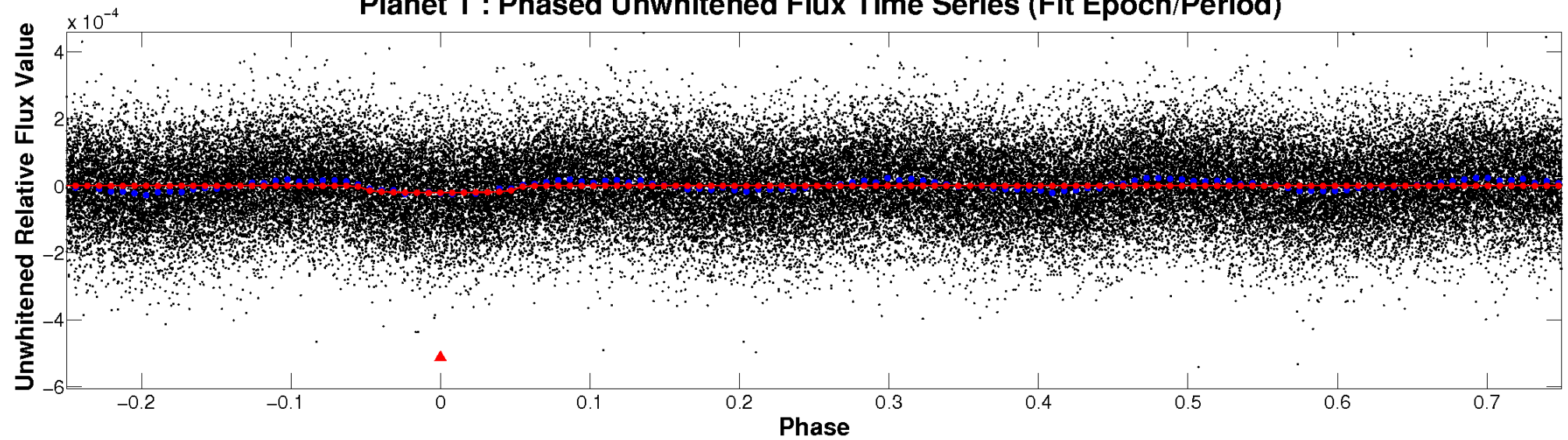
# ALT Odd/Even

TCE 007583299-01

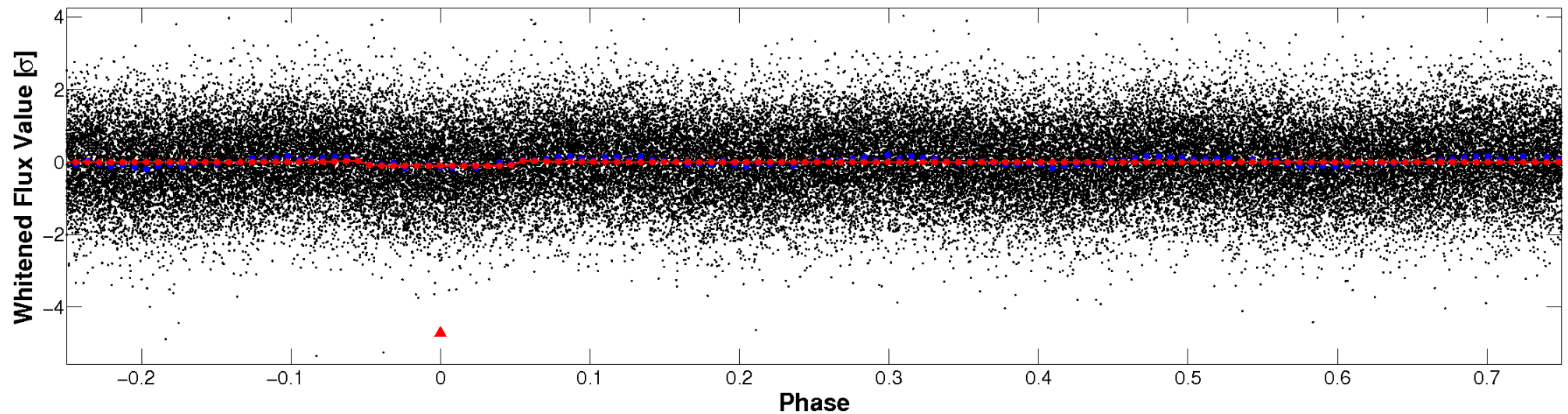


# Non-Whitened Vs. Whitened Light Curve

**Planet 1 : Phased Unwhitened Flux Time Series (Fit Epoch/Period)**

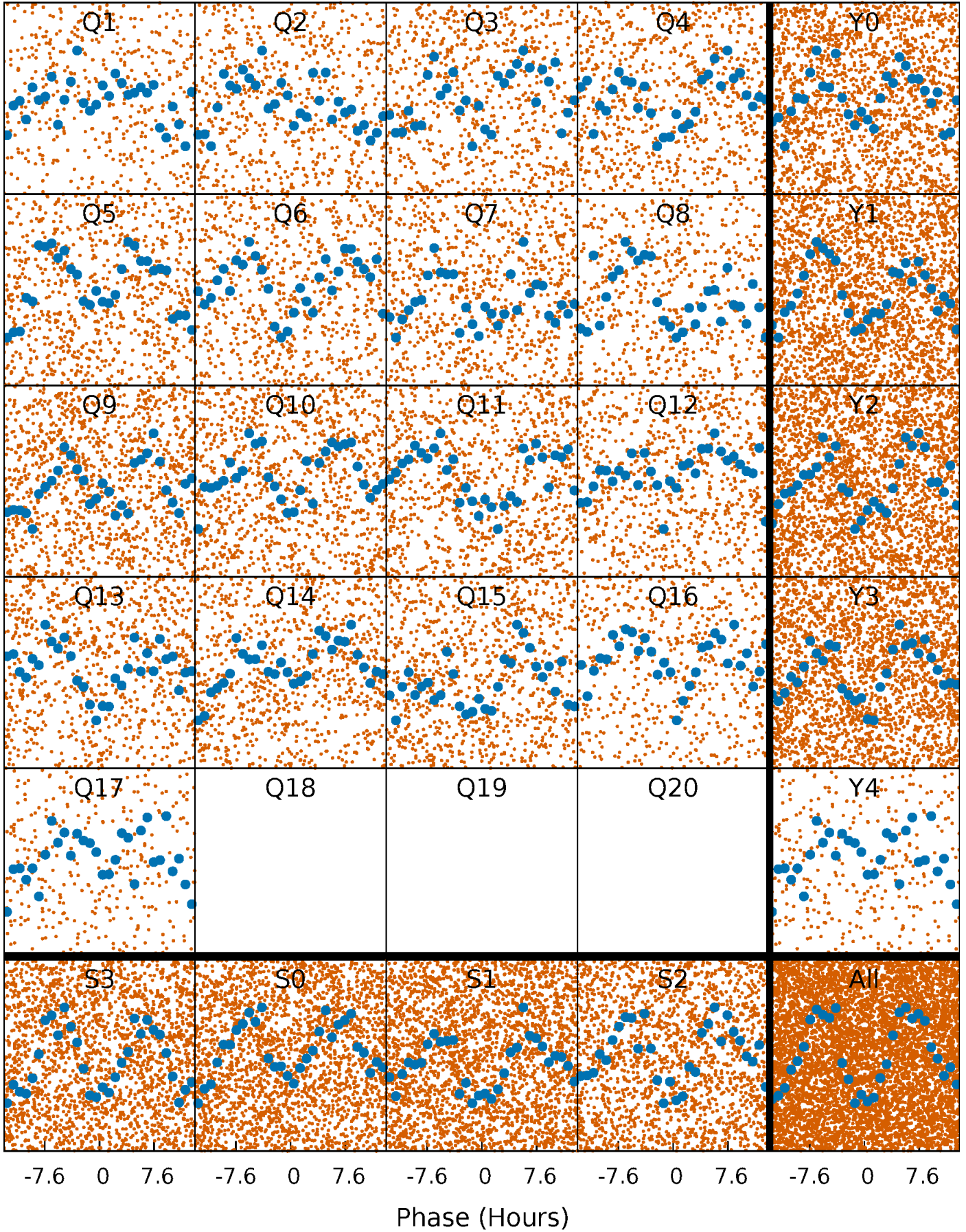


**Planet 1 : Phased Whitened Flux Time Series (Fit Epoch/Period)**



# PDC Quarter-Phased Transit Curves

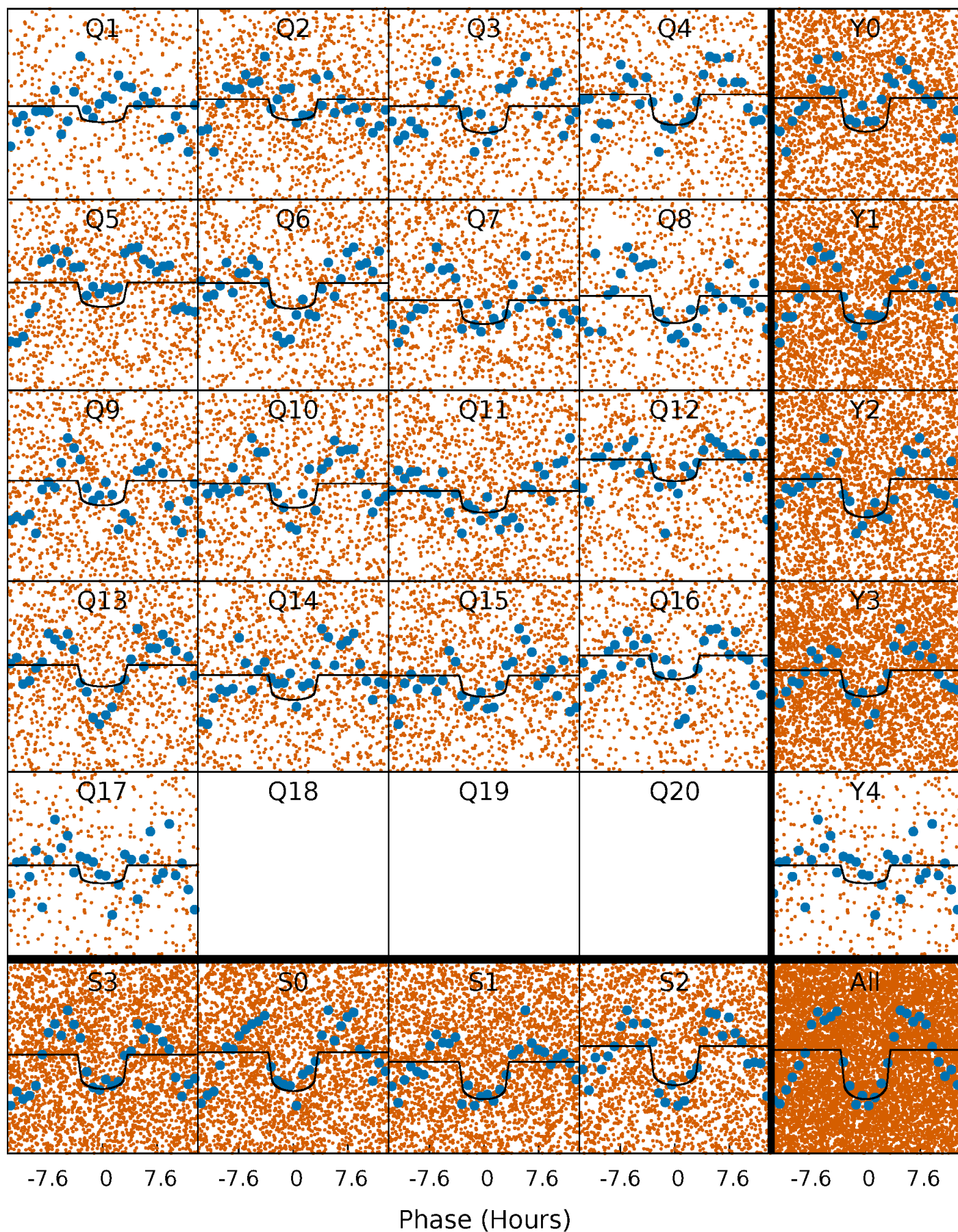
TCE 007583299-01   P= 2.595737 Days    $T_0=132.408549$  (BKJD)





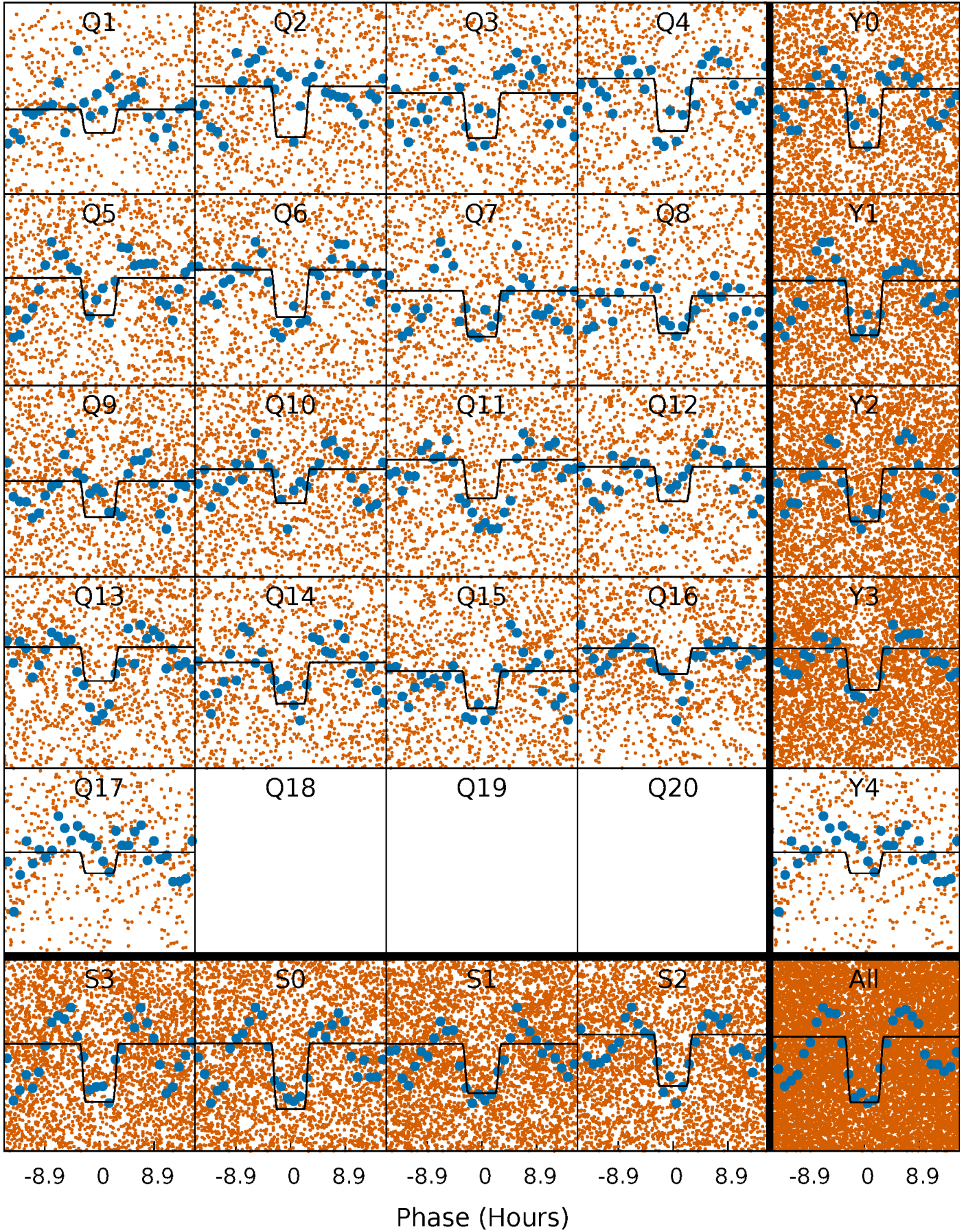
# DV Quarter-Phased Transit Curves

TCE 007583299-01   P= 2.595737 Days    $T_0=132.408549$  (BKJD)



# Alt. Detrend Quarter-Phased Transit Curves

TCE 007583299-01 P= 2.595735 Days  $T_0=132.414919$  (BKJD)

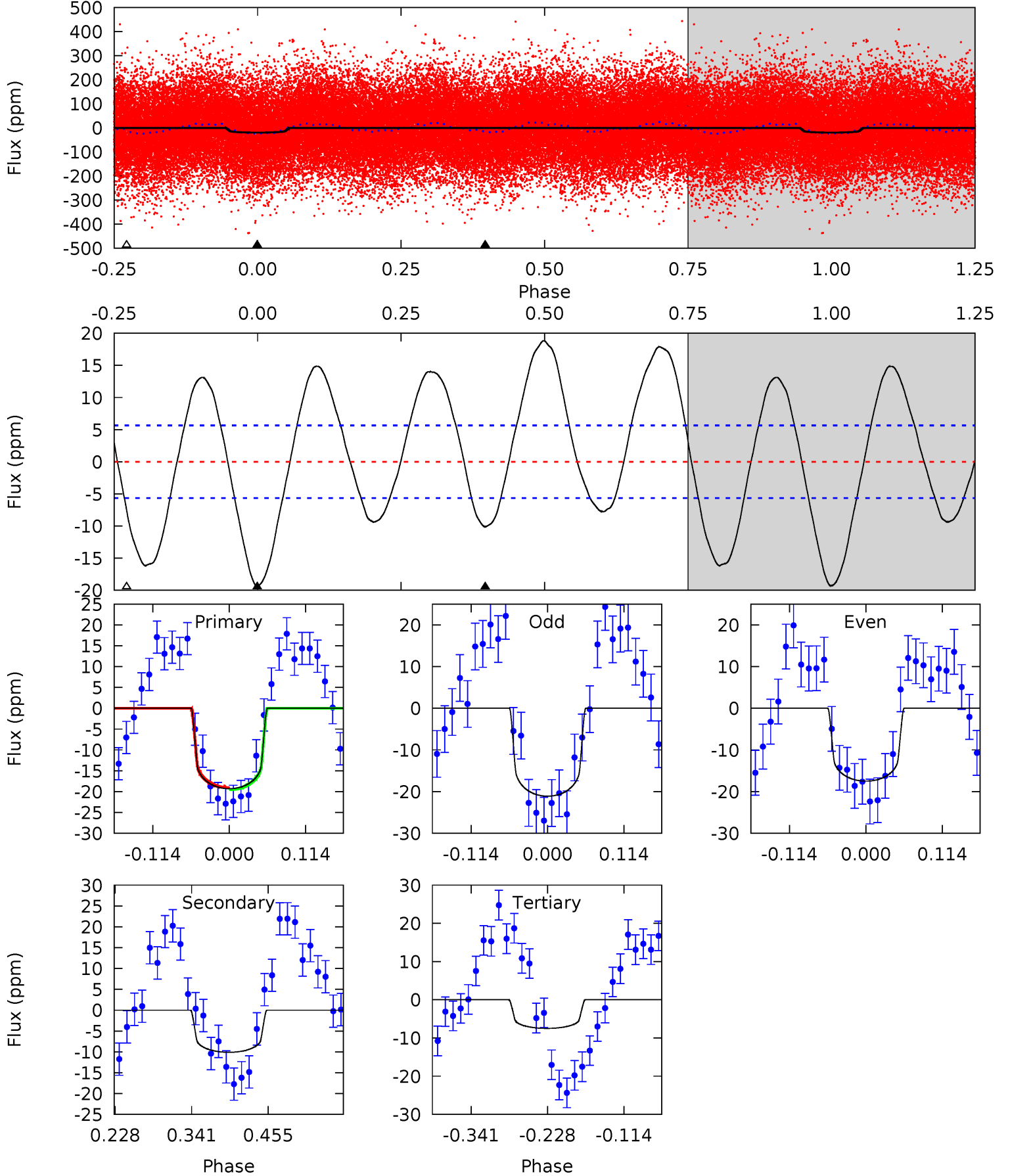




# DV Model-Shift Uniqueness Test

007583299-01, P = 2.595737 Days, E = 129.812812 Days

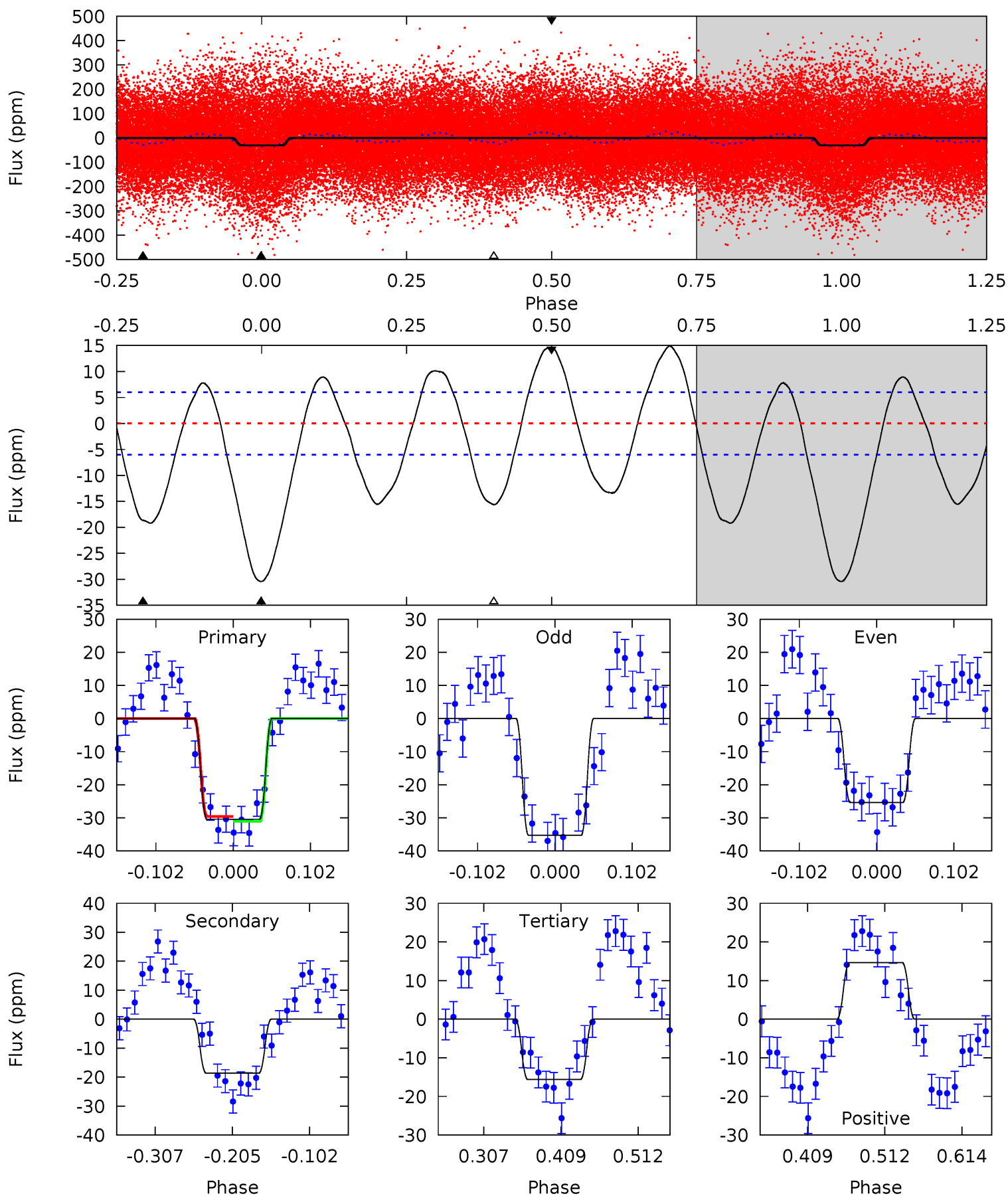
Pri	Sec	Ter	Pos	FA <sub>1</sub>	FA <sub>2</sub>	F <sub>Red</sub>	Pri-Ter	Pri-Pos	Sec-Ter	Sec-Pos	Odd-Evn	DMM	Shape	TAT
15.5	8.11	6.01	0	4.54	1.58	7.76	9.48	15.5	2.10	8.11	1.46	0.94	0.49	0.17



# Alt Model-Shift Uniqueness Test

007583299-01, P = 2.595735 Days, E = 129.819184 Days

Pri	Sec	Ter	Pos	FA <sub>1</sub>	FA <sub>2</sub>	F <sub>Red</sub>	Pri-Ter	Pri-Pos	Sec-Ter	Sec-Pos	Odd-Evn	DMM	Shape	TAT
23.1	14.1	11.8	11.1	4.56	1.63	7.45	11.2	11.9	2.29	3.02	3.76	0.83	0.33	0.57





### Stellar Parameters For KIC 007583299

	$T_{\text{eff}} (K)$	$\log(g)$	$[\text{Fe}/\text{H}]$	$R (R_{\odot})$	$M (M_{\odot})$	$\rho_{\star} (\text{g}\cdot\text{cm}^{-3})$
	$6406^{+181}_{-227}$	$4.160^{+0.214}_{-0.175}$	$-0.140^{+0.250}_{-0.300}$	$1.482^{+0.442}_{-0.362}$	$1.159^{+0.192}_{-0.157}$	$0.501^{+0.590}_{-0.235}$
	+3%/-4%	+5%/-4%	+179%/-214%	+30%/-24%	+17%/-14%	+118%/-47%
Source	PHO54	PHO54	PHO54	DSEP		

KIC = Kepler Input Catalog; PHO = Photometry; SPE = Spectroscopy; AST = Asteroseismology  
 TRA = Transits; DESP = Dartmouth Models; MULT = Multiple Models

### Secondary Eclipse Parameters for KIC 007583299-01 / KOI

Detrend	Depth (ppm)	$R_p (R_{\oplus})$	$T_{\text{max}} (K)$	$T_{\text{obs}} (K)$	$A_{\text{obs}}$
DV	$-10 \pm 1$	$0.81^{+0.21}_{-0.19}$	$2435^{+188}_{-192}$	$5126^{+573}_{-415}$	$13^{+9}_{-5}$
Alt.	$-19 \pm 1$	$0.93^{+0.22}_{-0.19}$	$2417^{+195}_{-175}$	$5531^{+515}_{-430}$	$18^{+10}_{-6}$

$T_{\text{max}}$  = Theoretical Maximum Planetary Temperature

$T_{\text{obs}}$  = Observed Planetary Temperature (Assuming  $A=0.3$ )

$A_{\text{obs}}$  = Observed Albedo (Assuming  $T=0$ )

If a secondary eclipse is present, the system is likely an EB if  $T_{\text{obs}} \gg T_{\text{max}}$  AND  $A_{\text{obs}} \gg 1.0$

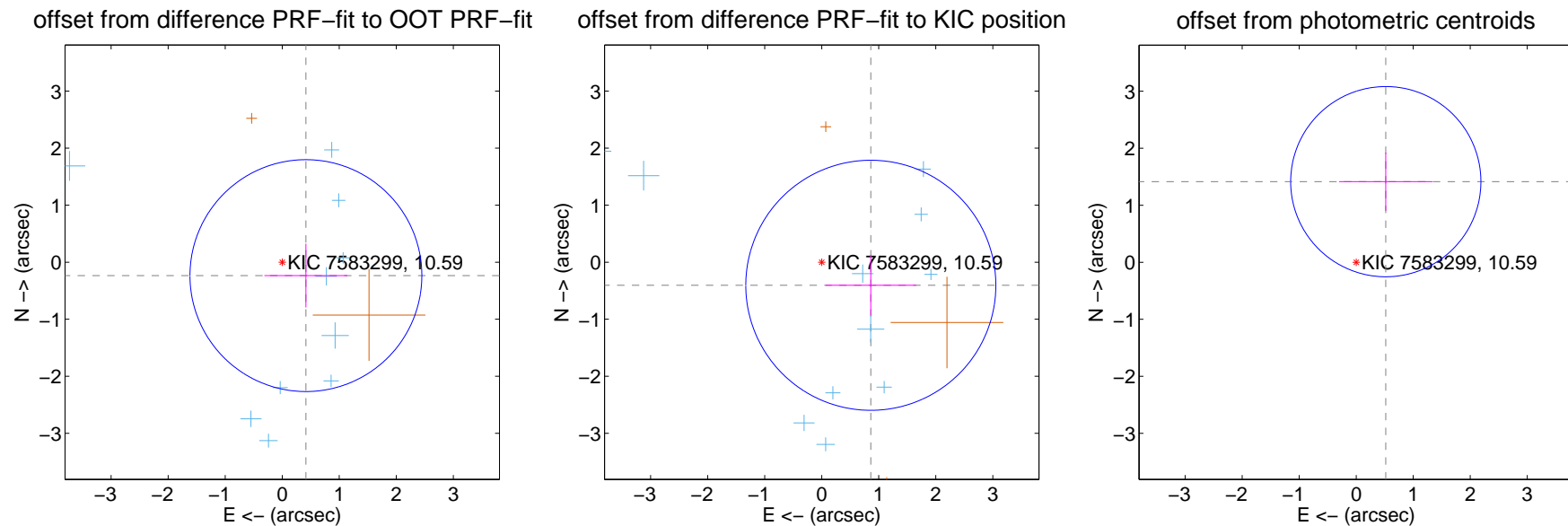
## DV Centroid Data

Supplemental centroid analysis for 007583299-01. **Kepler magnitude: 10.59.** Transit SNR 8.45

There are 11 quarters with good PRF difference image offsets

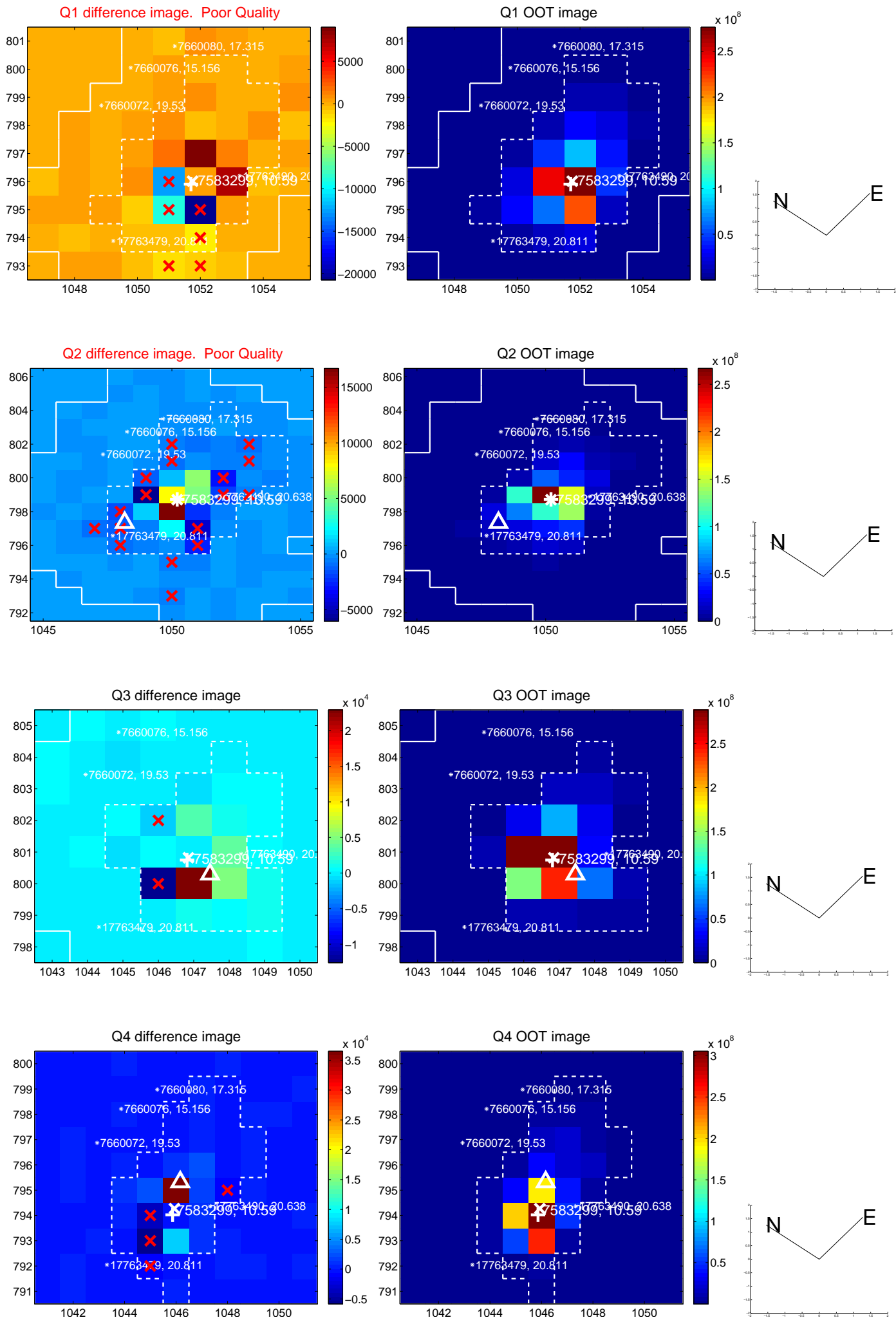
The direct PRF centroid is offset from the target star catalog position by about 0.69 arcsec

	Distance in arcsec	Distance / $\sigma$	$\Delta$ RA	$\Delta$ Dec
PRF-fit source offset from OOT	$0.477 \pm 0.678$	0.70	$-0.415 \pm 0.727$	$-0.235 \pm 0.559$
PRF-fit source offset from KIC position	$0.951 \pm 0.731$	1.30	$-0.861 \pm 0.796$	$-0.405 \pm 0.533$
photometric centroid source offset	$1.51 \pm 0.56$	2.71	$-0.52 \pm 0.82$	$1.41 \pm 0.51$

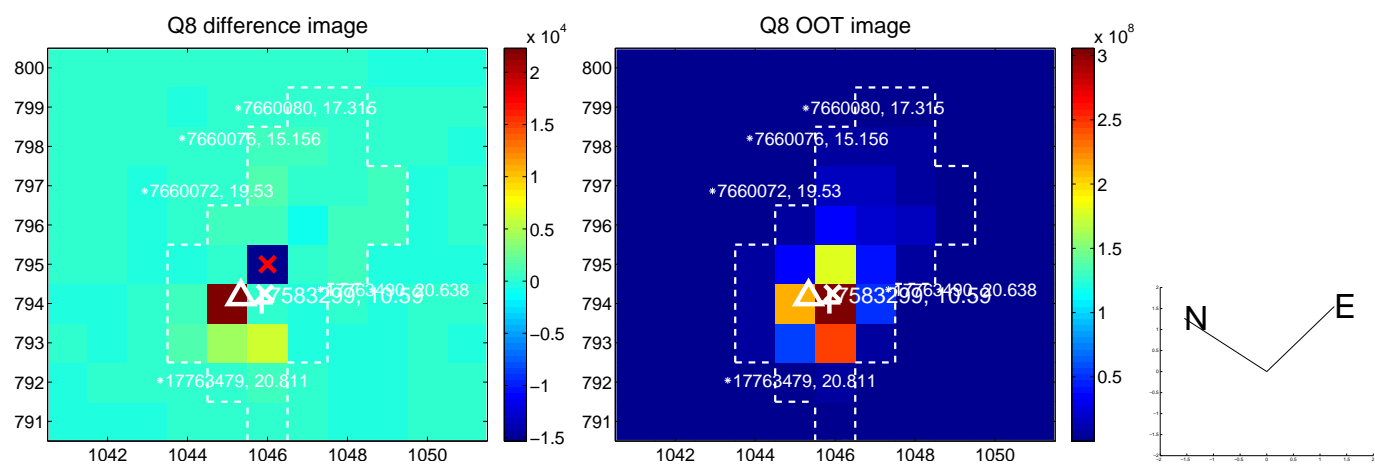
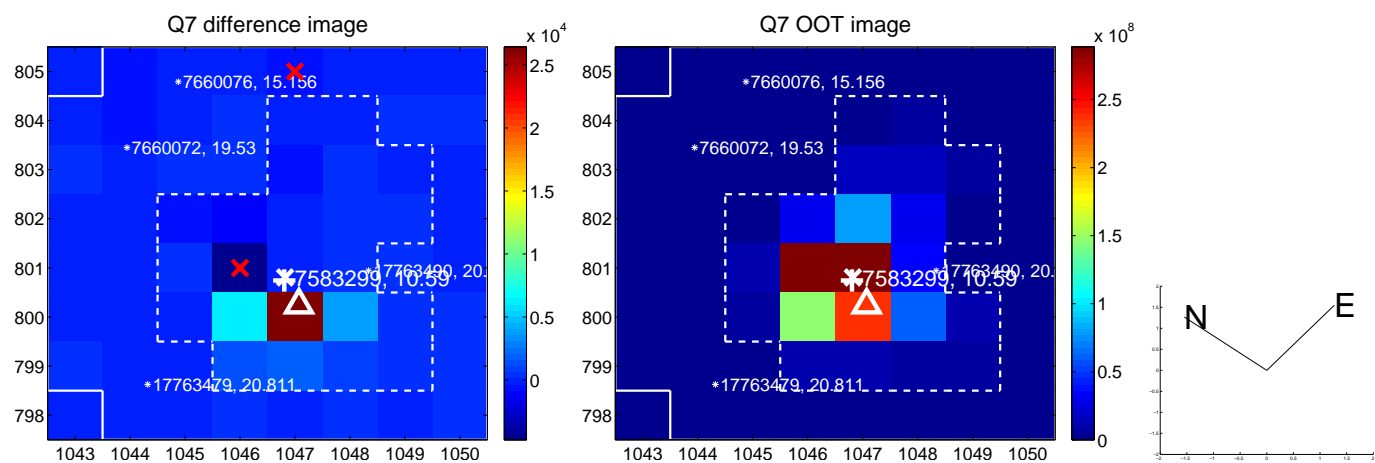
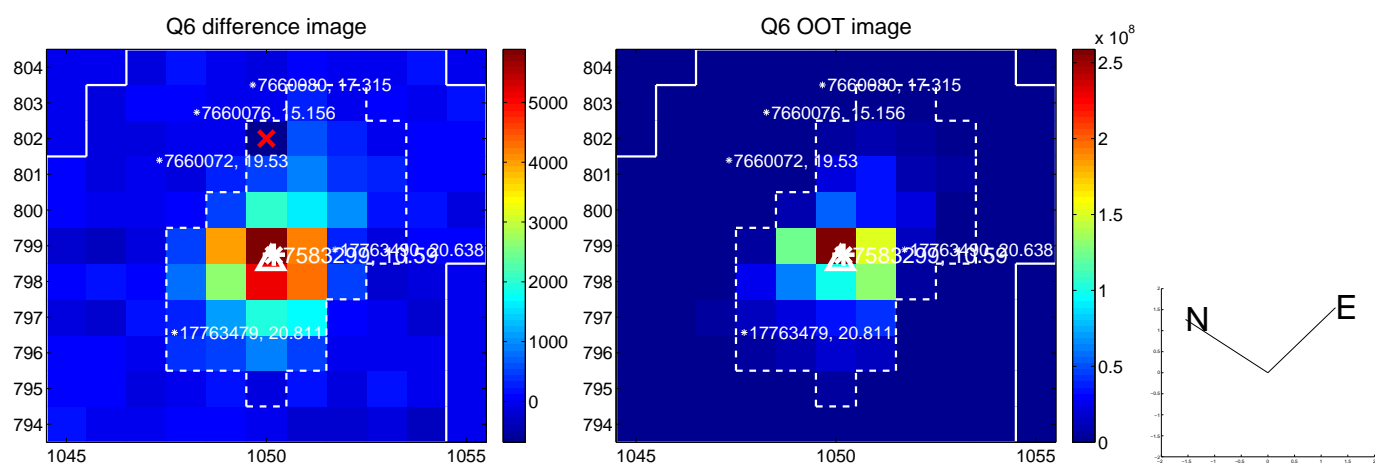
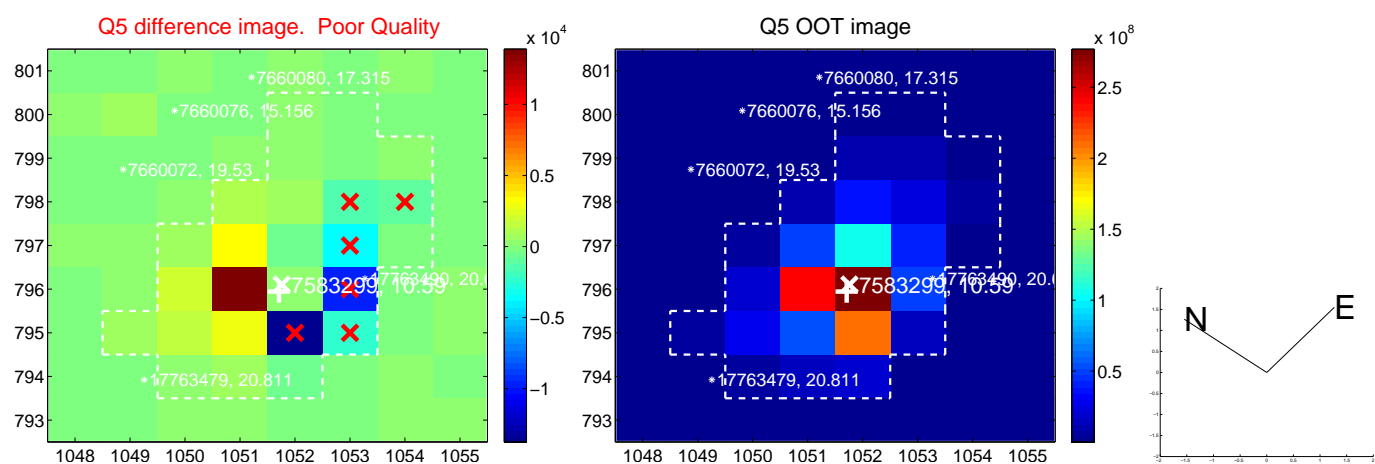


Centroid source offsets from the target star reconstructed from PRF and photometric centroids. **Sky blue crosses: good quarterly centroid offsets; Vermillion crosses: bad quarterly centroid offsets;** magenta cross: average over quarters. Length of the crosses: one- $\sigma$  uncertainty. Blue circle: three- $\sigma$ . Red \*: target star. Blue \*: Other stars. Text next to a star gives its KIC ID and kepmag. KIC IDs > 15,000,000 are from the UKIRT catalog.

white  $\times$ : KIC target position; +: OOT centroid;  $\triangle$ : difference centroid. red  $\times$ : large negative pixel value.

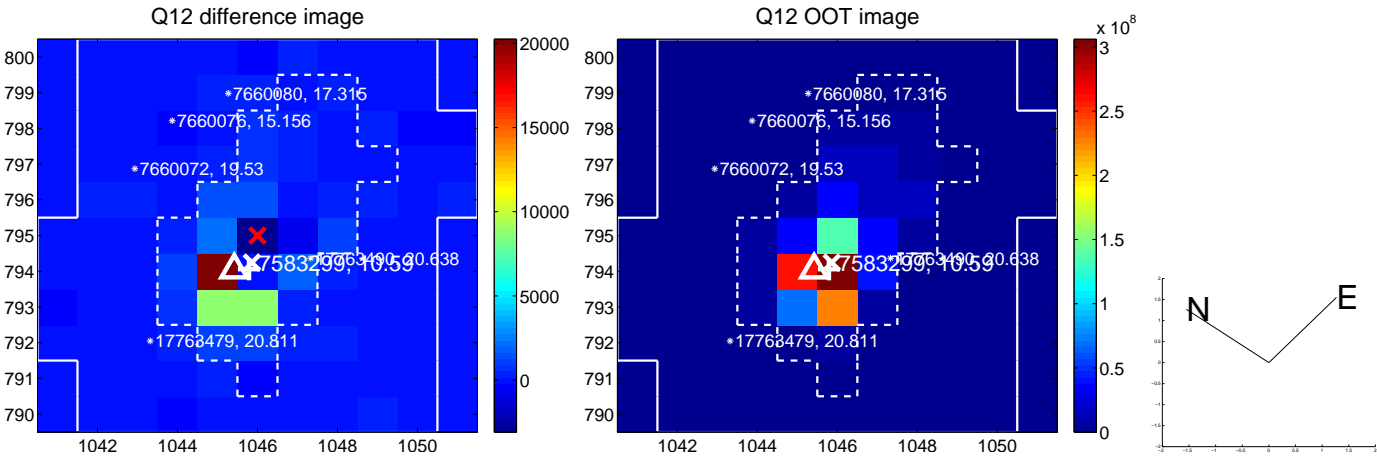
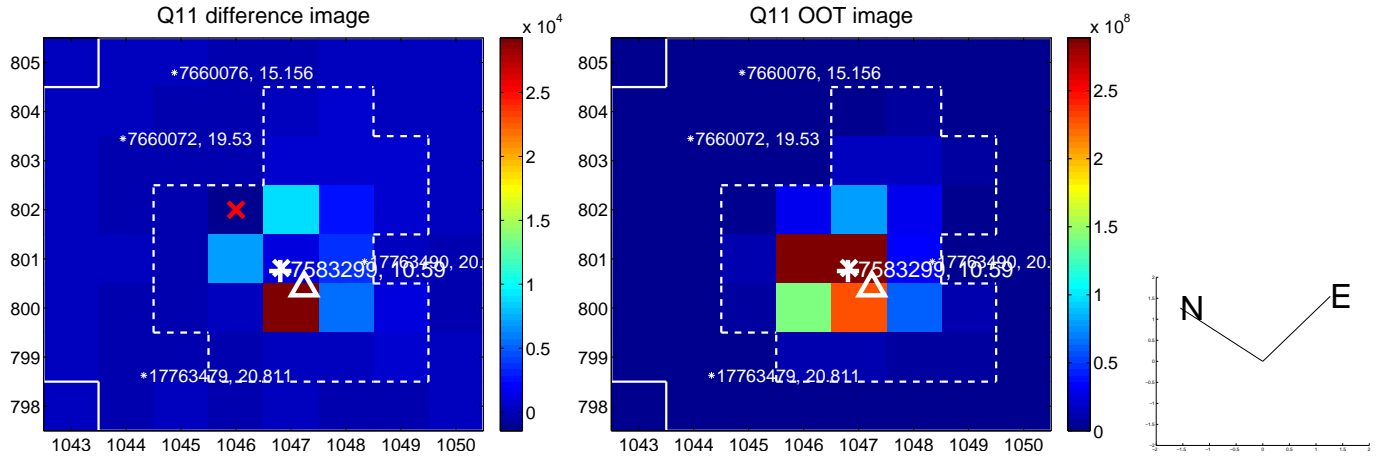
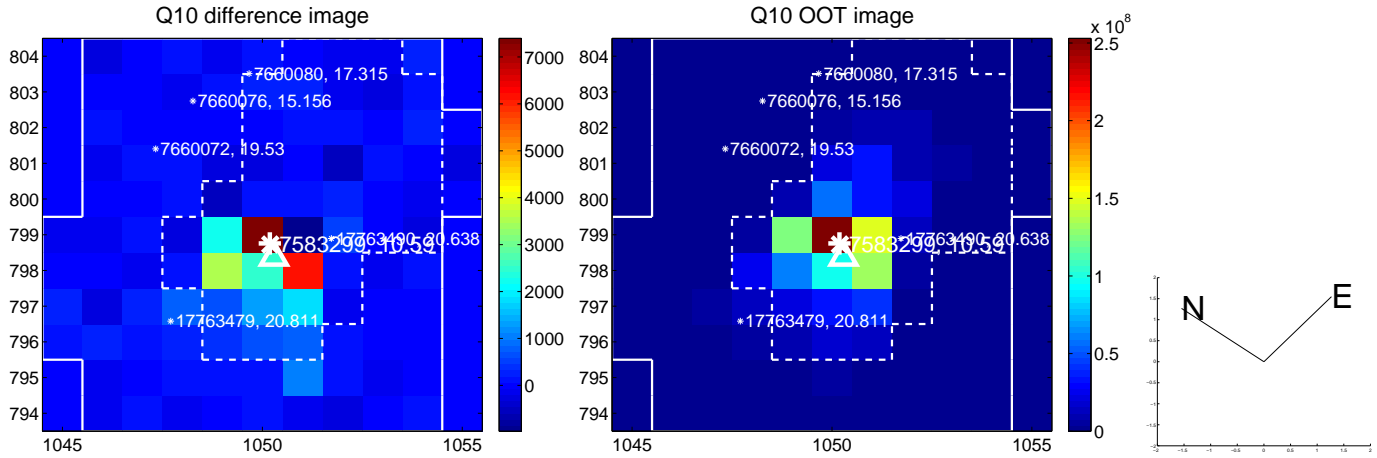
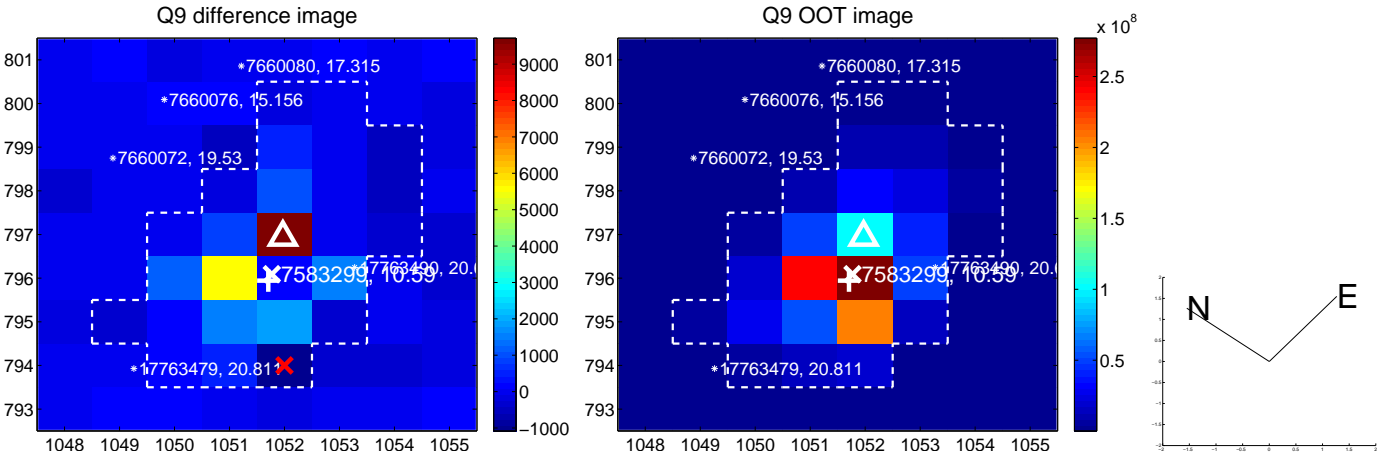


white  $\times$ : KIC target position;  $+$ : OOT centroid;  $\triangle$ : difference centroid. red  $\times$ : large negative pixel value.

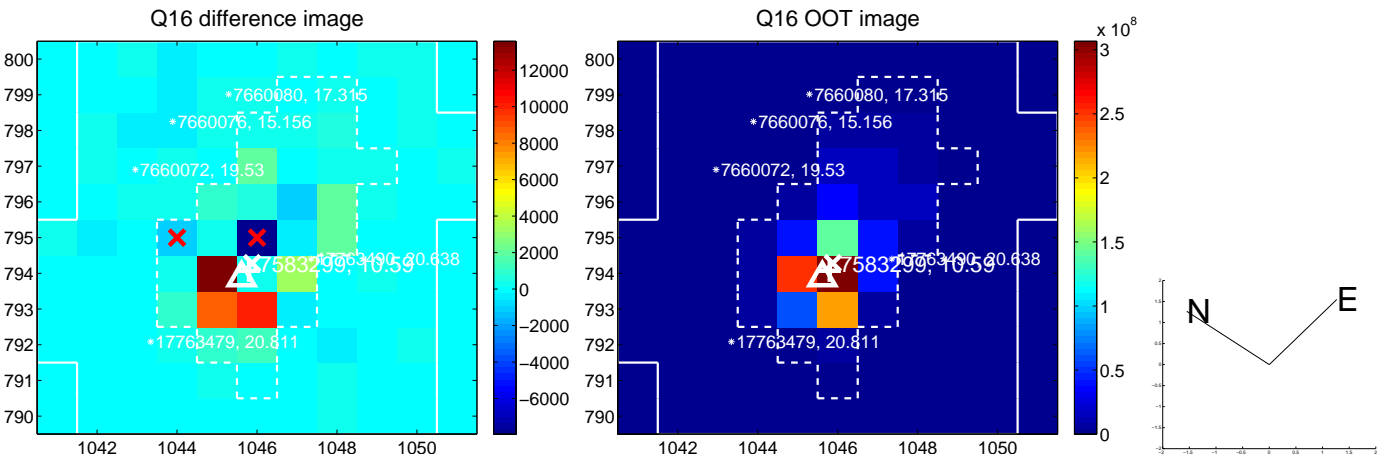
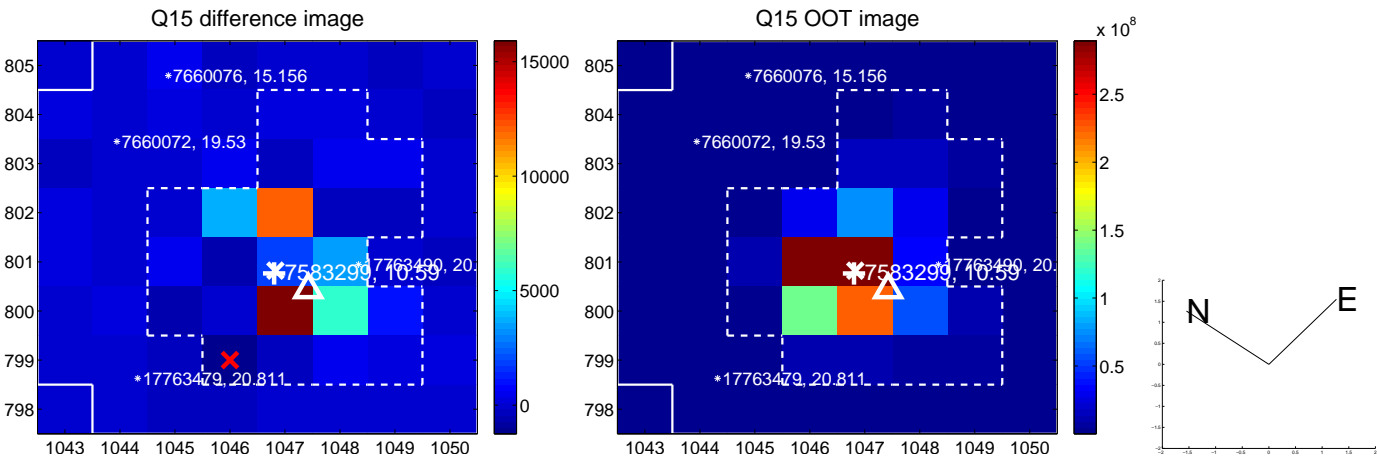
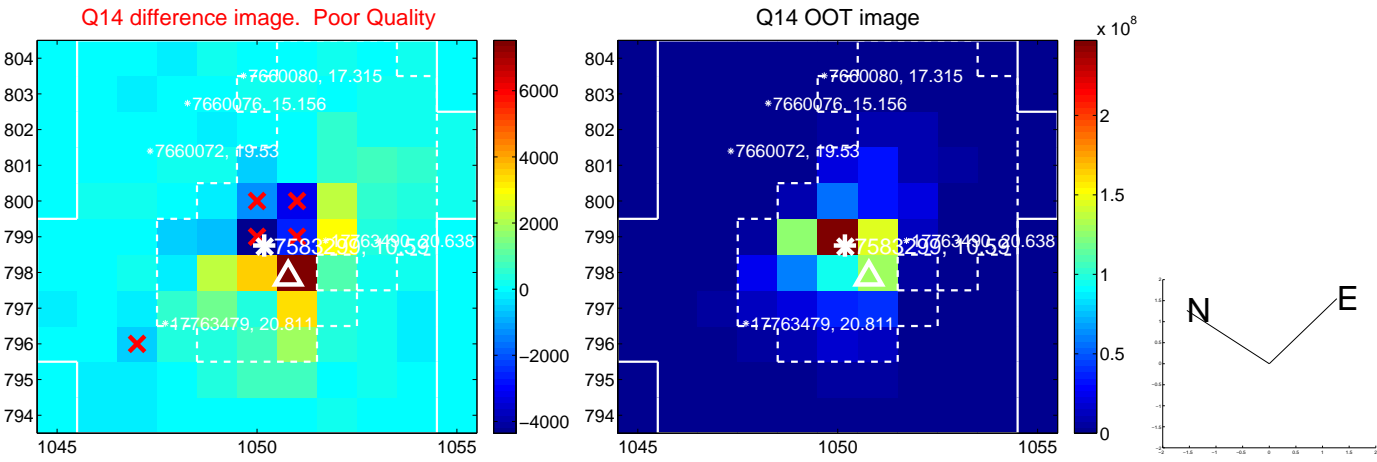
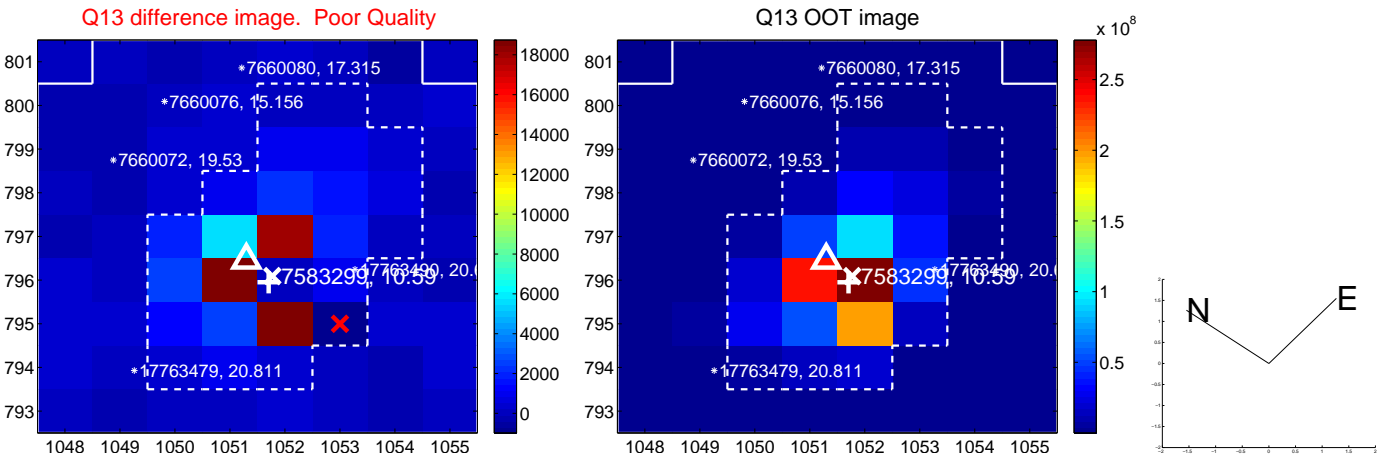




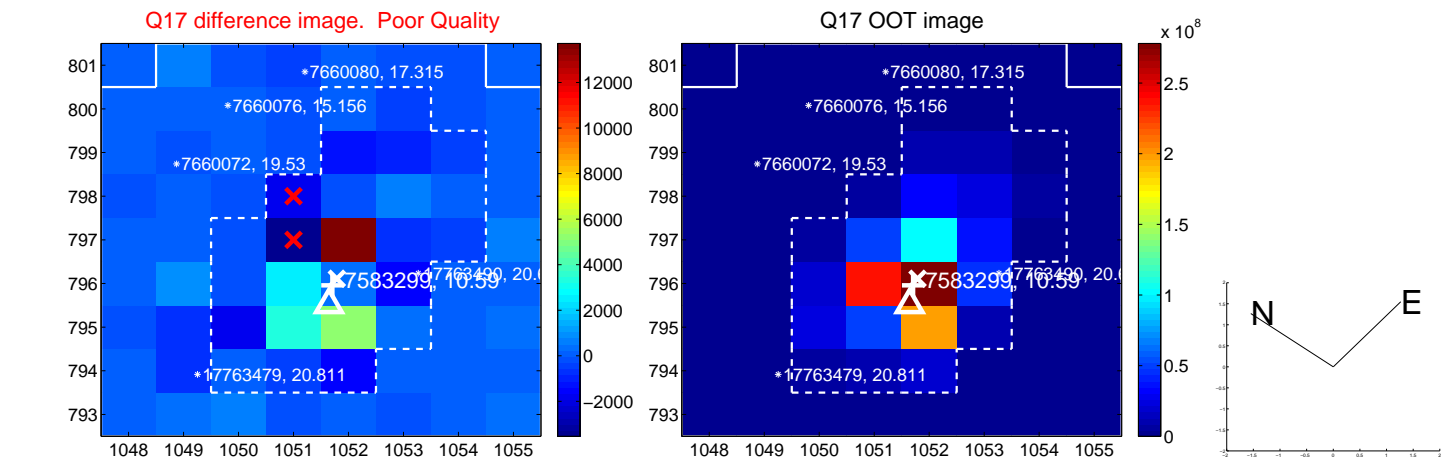
white  $\times$ : KIC target position; +: OOT centroid;  $\triangle$ : difference centroid. red  $\times$ : large negative pixel value.



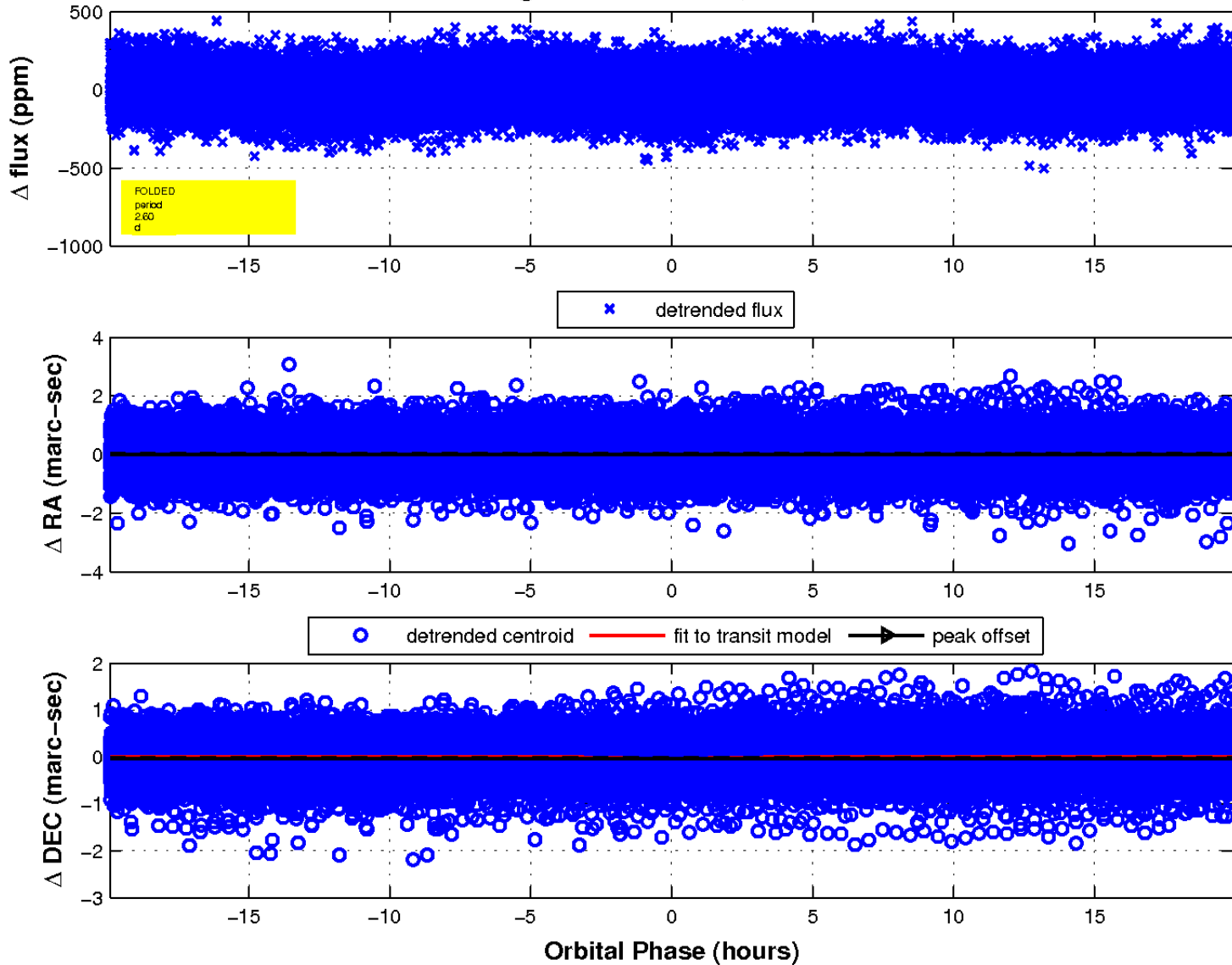
white  $\times$ : KIC target position; +: OOT centroid;  $\triangle$ : difference centroid. red  $\times$ : large negative pixel value.



white  $\times$ : KIC target position;  $+$ : OOT centroid;  $\triangle$ : difference centroid. red  $\times$ : large negative pixel value.



fluxWeightedCentroids, Planet 1 of 1



UKIRT Image

Declination

