

# KIC 007549209

## Q1-17 DR25 TCE Parameters

TCE	Run Type	KOI?	Period (Days)	Epoch (BKJD)	Depth (ppm)	Duration (Hours)	MES	SNR	$R_{\star}$ ( $R_{\odot}$ )	$T_{\star}$ (K)	$R_p$ ( $R_{\oplus}$ )	$S_p$ ( $S_{\oplus}$ )
007549209-01	OBS	1518.01	27.507208	151.846569	605.6	6.006	27.2	29.4	0.88	5783	2.67	24.77

## Robovetter Results

TCE	Run Type	Disp	Score	N	S	C	E	Comments
007549209-01	OBS	PC	1.00	0	0	0	0	NO_COMMENT

**Notes:** OBS = Observed. INJ = Injected. INV = Inverted. SCR = Scrambled.

N = Not Transit-Like. S = Stellar Eclipse. C = Centroid Offset. E = Ephemeris Match.

See [http://exoplanetarchive.ipac.caltech.edu/docs/API\\_kepcandidate\\_columns.html#proj\\_disp\\_col](http://exoplanetarchive.ipac.caltech.edu/docs/API_kepcandidate_columns.html#proj_disp_col) for comment definitions.

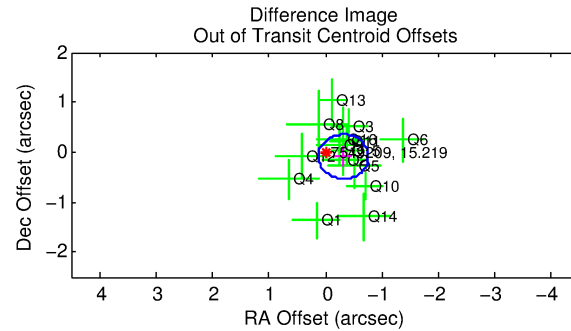
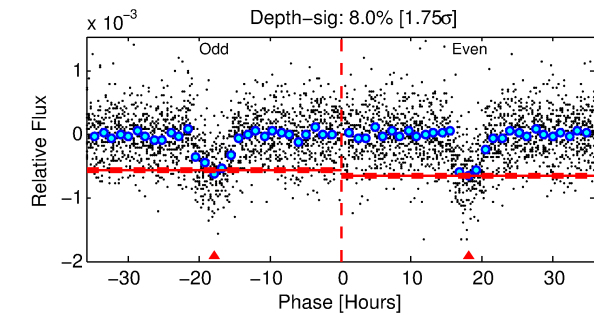
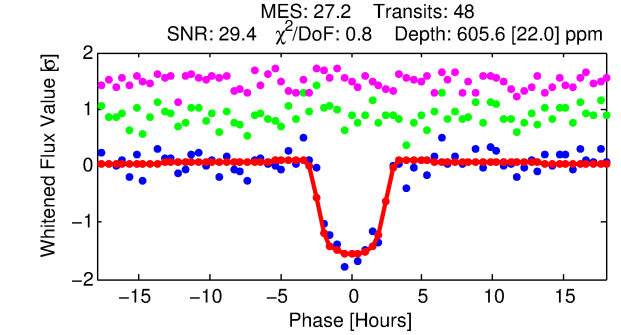
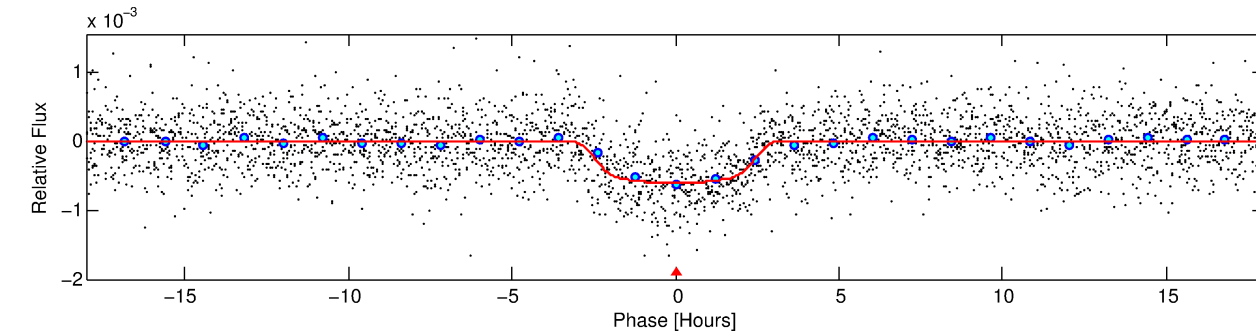
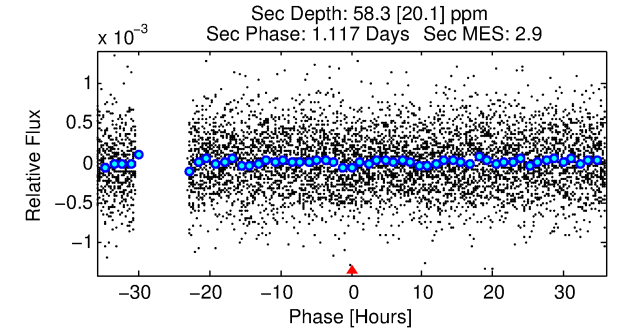
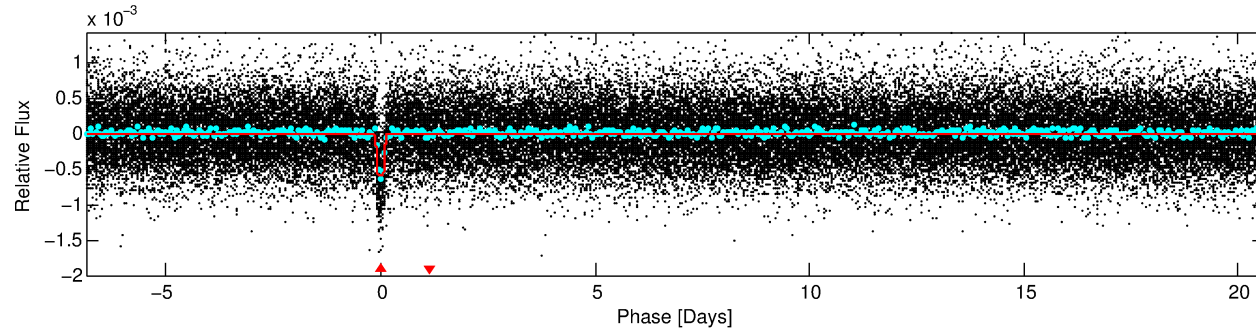
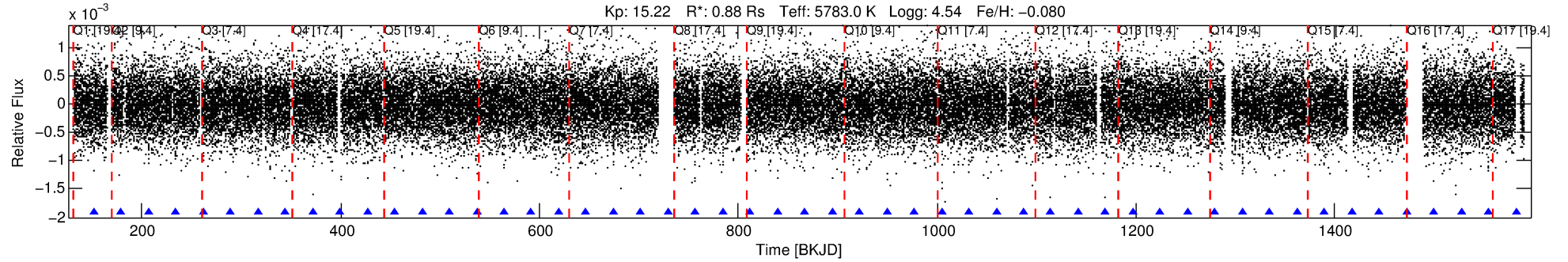
## Ephemeris Match Information For 007549209-01

No Significant Match Found

# DV One-Page Summary

KIC: 7549209 Candidate: 1 of 1 Period: 27.507 d

KOI: K01518.01 Corr: 0.934



## DV Fit Results:

Period = 27.50721 [0.00015] d  
Epoch = 151.8466 [0.0044] BKJD  
Rp/R\* = 0.0278 [0.0011]  
a/R\* = 15.18 [2.20]  
b = 0.93 [0.02]  
Seff = 24.77 [10.06]  
Teff = 569 [58] K  
Rp = 2.67 [0.85] Re  
a = 0.1770 [0.0471] AU  
Ag = 140.89 [73.88] [1.89σ]  
Teffp = 3030 [283] K [8.53σ]

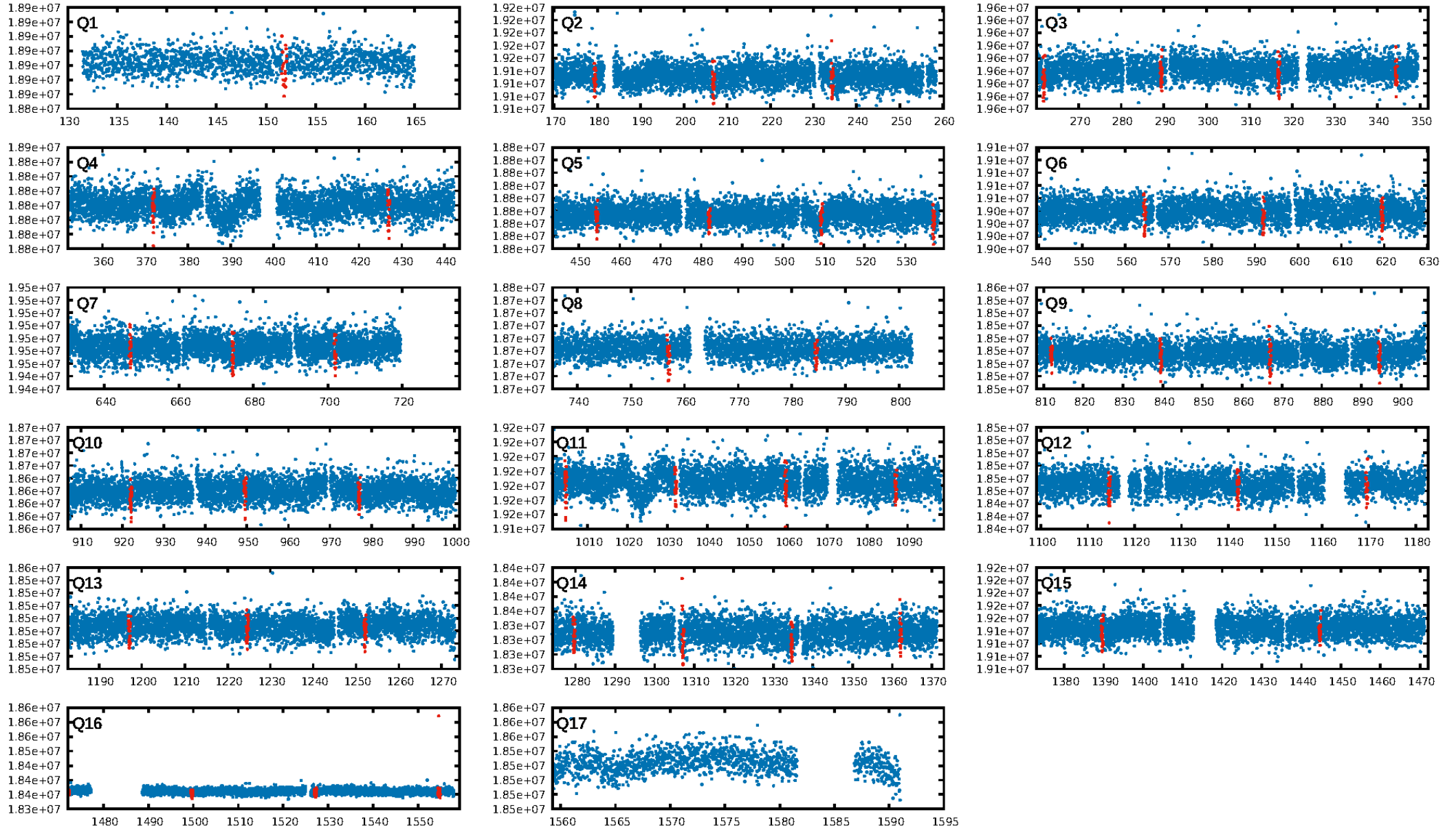
## DV Diagnostic Results:

ShortPeriod-sig: N/A  
LongPeriod-sig: N/A  
ModelChiSquare2-sig: 98.6%  
ModelChiSquareGof-sig: 100.0%  
Bootstrap-pfa: 2.99e-162  
RollingBand-fgt: 1.00 [47/47]  
GhostDiagnostic-chr: 3.539  
Centroid-sig: 5.4%  
Centroid-so: 0.772 arcsec [1.81σ]  
OotOffset-rm: 0.328 arcsec [2.22σ]  
KicOffset-rm: 0.434 arcsec [2.99σ]  
OotOffset-st: 4/3/4/4 [15]  
KicOffset-st: 4/3/4/4 [15]  
DiffImageQuality-fgm: 1.00 [15/15]  
DiffImageOverlap-fno: 1.00 [16/16]

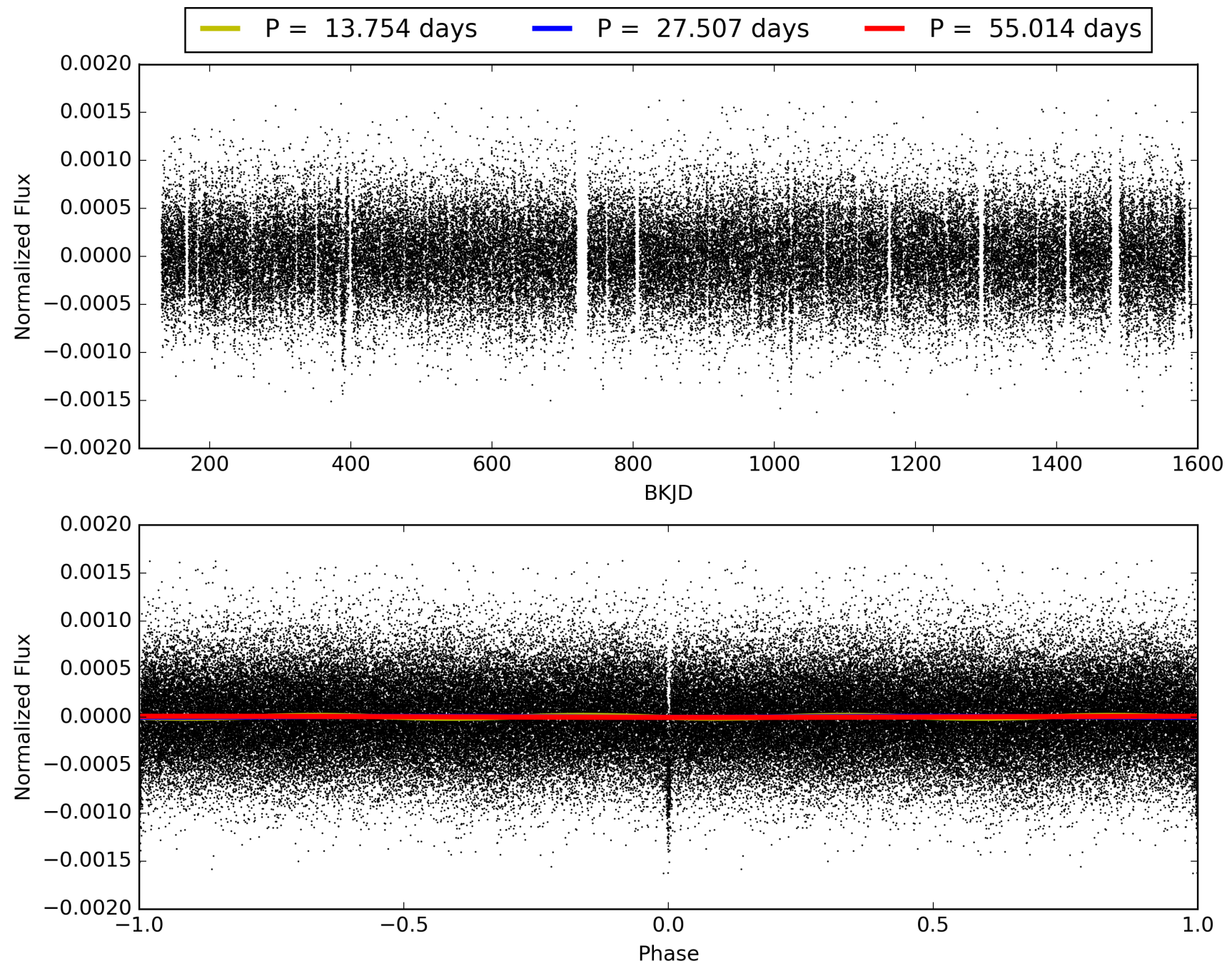
Software Revision: svn+ssh://murzim/repo/soc/tags/release/9.3.42@60958 -- Date Generated: 30-Jan-2016 21:00:18 Z

This Data Validation Report Summary was produced in the Kepler Science Operations Center Pipeline at NASA Ames Research Center

# TCE 007549209-01, PDC Light Curves

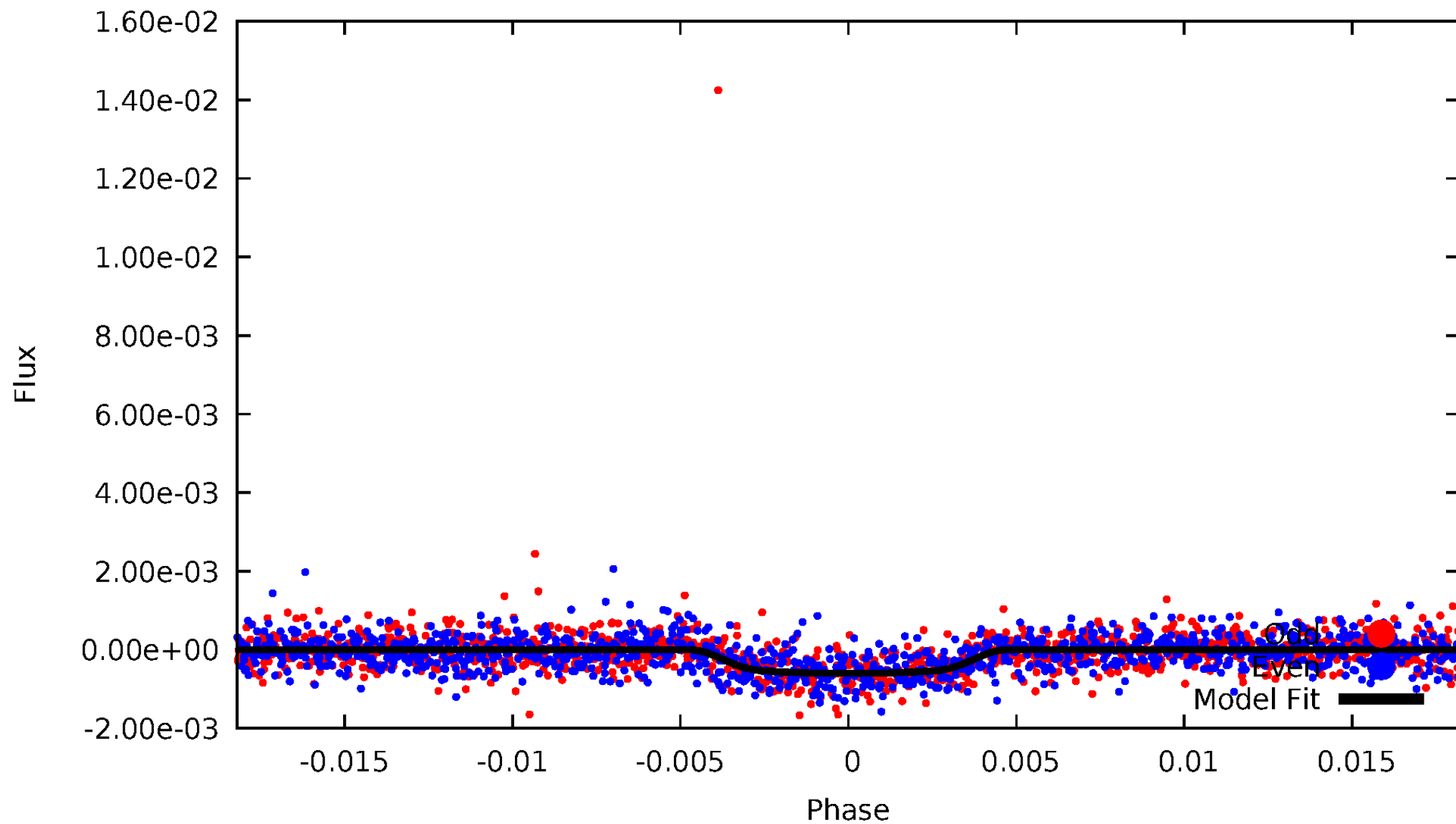


TCE 007549209-01



# DV Odd/Even

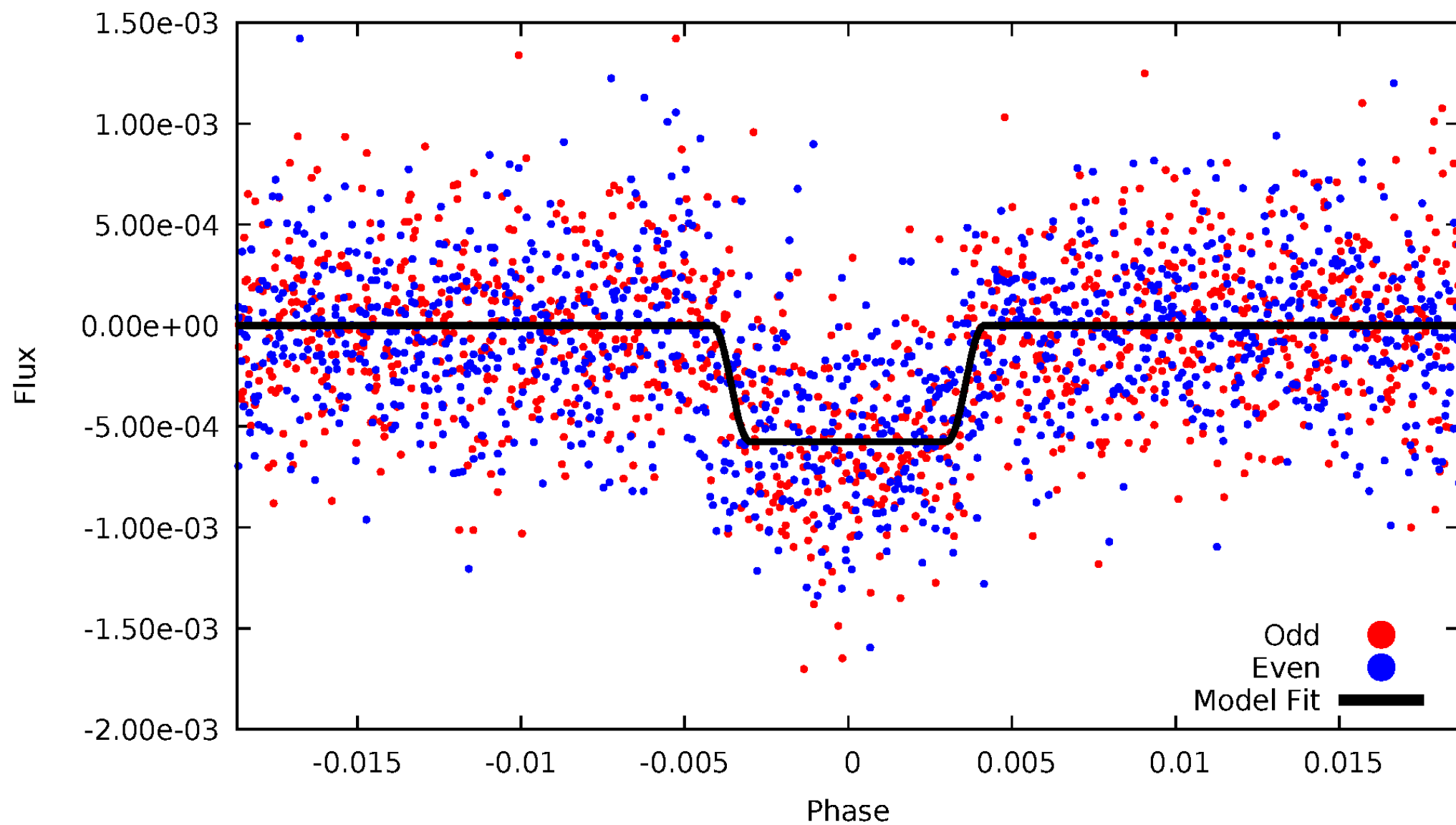
TCE 007549209-01



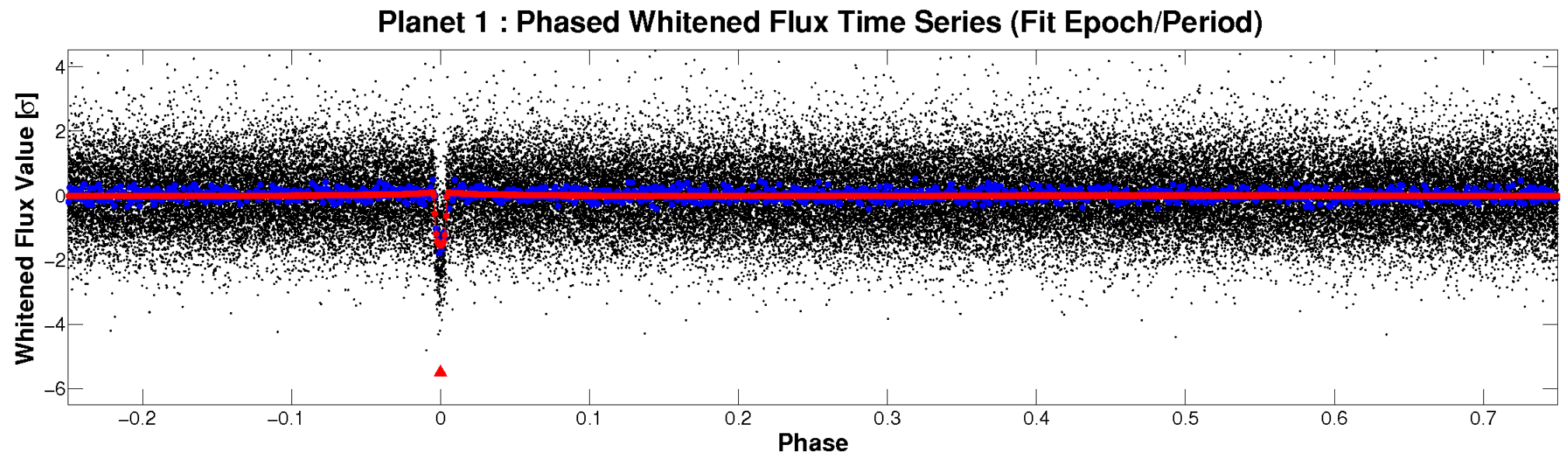
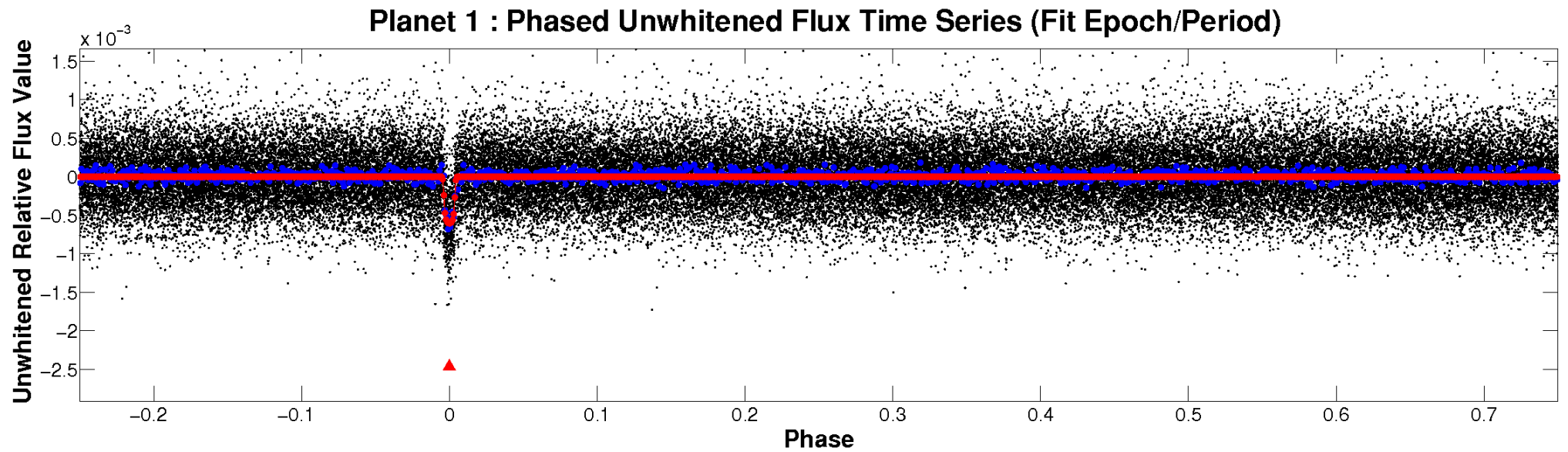


# ALT Odd/Even

TCE 007549209-01

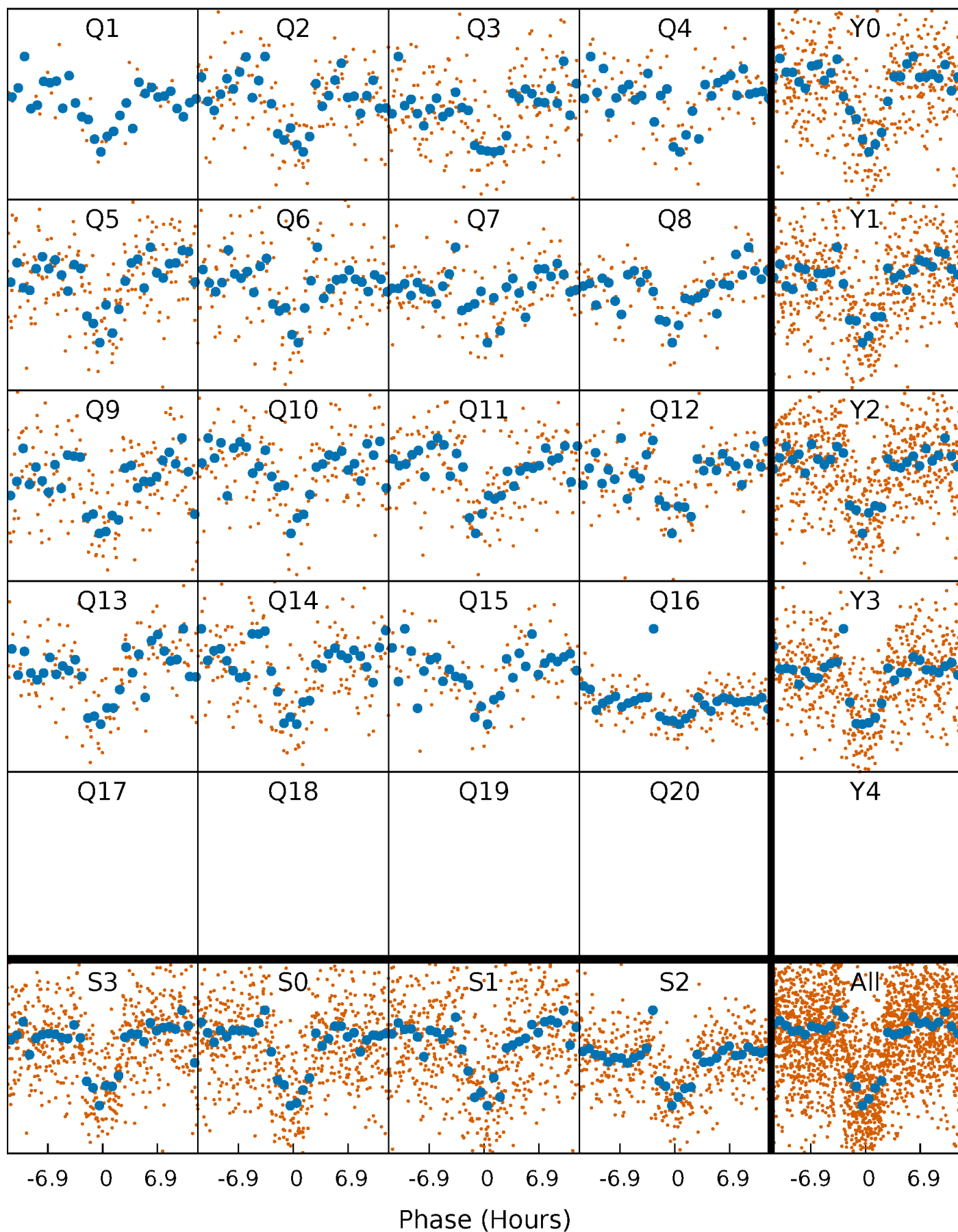


# Non-Whitened Vs. Whitened Light Curve



# PDC Quarter-Phased Transit Curves

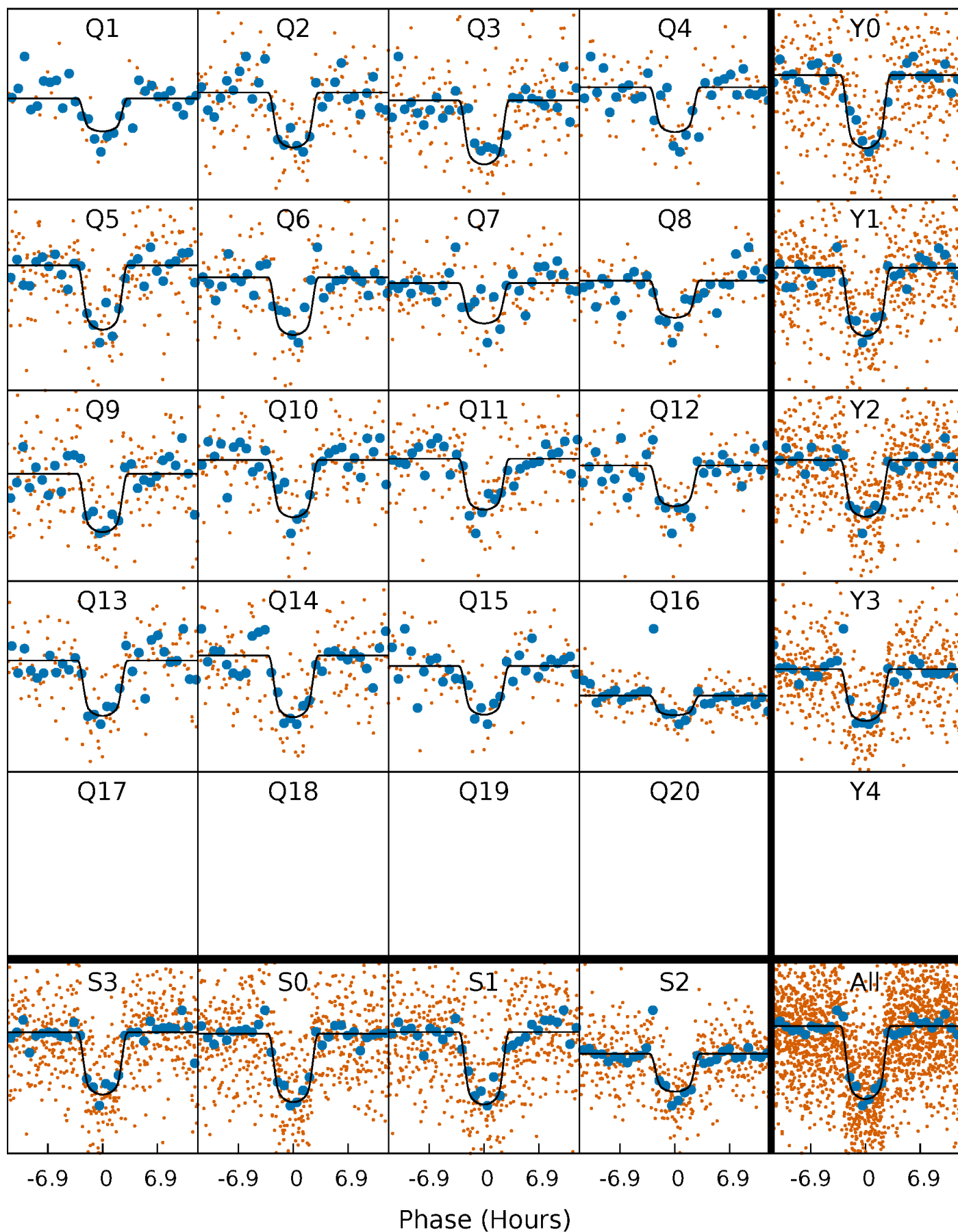
TCE 007549209-01 P= 27.507208 Days  $T_0=151.846569$  (BKJD)





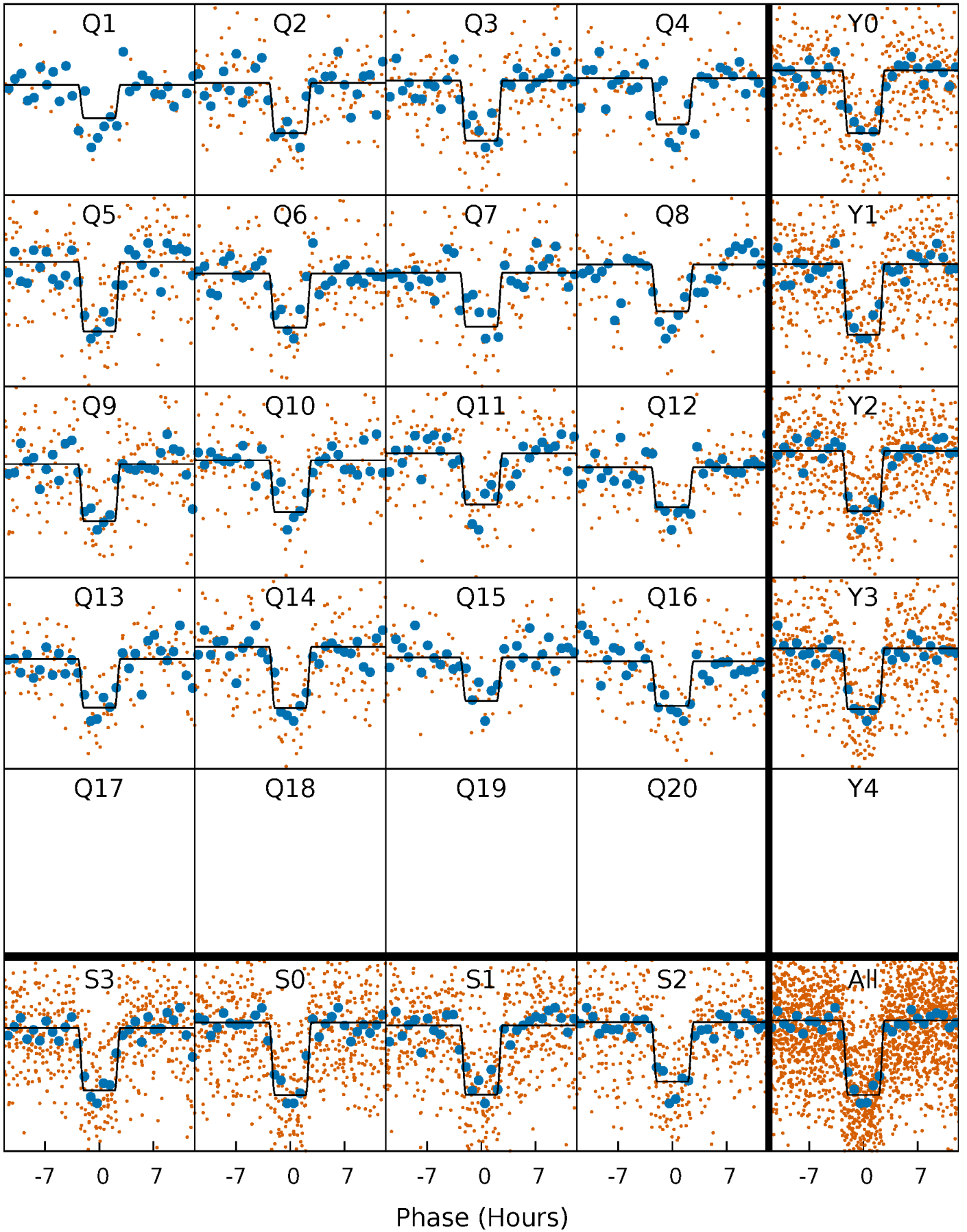
# DV Quarter-Phased Transit Curves

TCE 007549209-01 P= 27.507208 Days  $T_0=151.846569$  (BKJD)



# Alt. Detrend Quarter-Phased Transit Curves

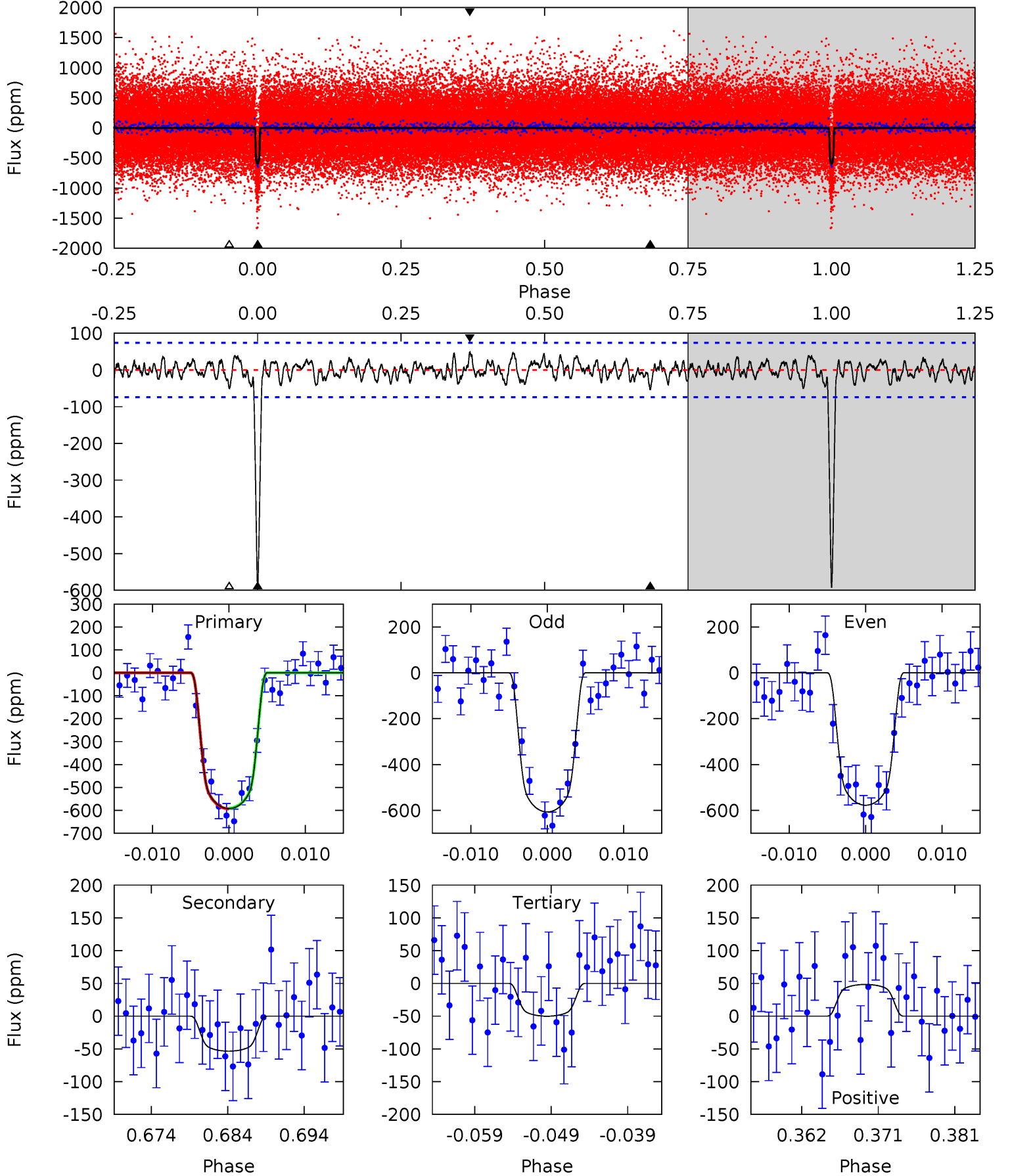
TCE 007549209-01 P= 27.506761 Days  $T_0=151.858757$  (BKJD)



# DV Model-Shift Uniqueness Test

007549209-01,  $P = 27.507208$  Days,  $E = 124.339361$  Days

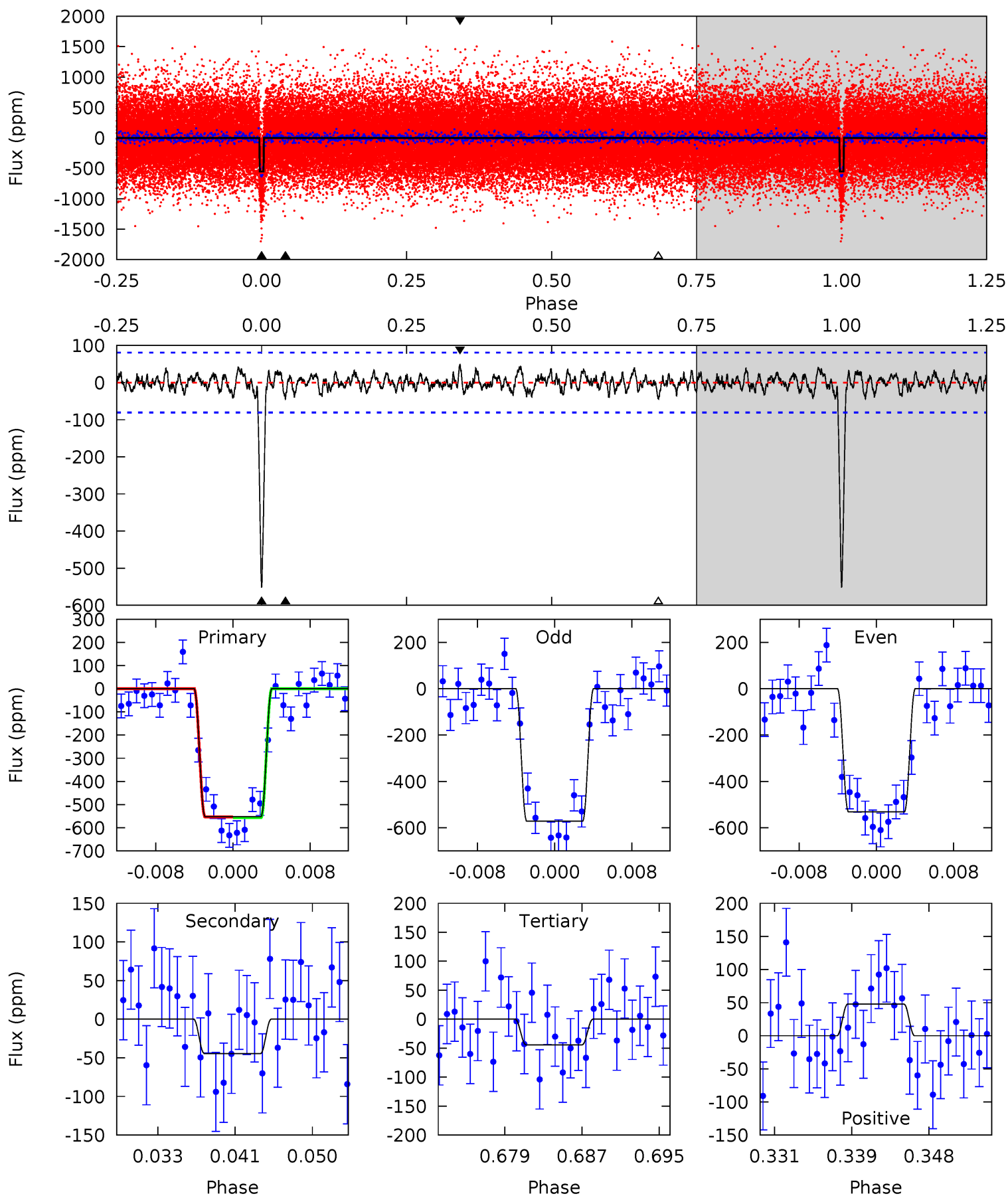
Pri	Sec	Ter	Pos	FA <sub>1</sub>	FA <sub>2</sub>	F <sub>Red</sub>	Pri-Ter	Pri-Pos	Sec-Ter	Sec-Pos	Odd-Evn	DMM	Shape	TAT
40.2	3.63	3.40	3.28	5.03	2.58	1.24	36.8	36.9	0.23	0.35	1.00	0.96	0.08	0.08



# Alt Model-Shift Uniqueness Test

007549209-01, P = 27.506761 Days, E = 124.351996 Days

Pri	Sec	Ter	Pos	FA <sub>1</sub>	FA <sub>2</sub>	F <sub>Red</sub>	Pri-Ter	Pri-Pos	Sec-Ter	Sec-Pos	Odd-Evn	DMM	Shape	TAT
34.6	2.79	2.77	3.00	5.06	2.64	1.01	31.8	31.6	0.02	-0.20	1.26	1.01	0.08	0.07



### Stellar Parameters For KIC 007549209

	$T_{\text{eff}}(K)$	$\log(g)$	[Fe/H]	$R (R_{\odot})$	$M(M_{\odot})$	$p_{\star} (\text{g}\cdot\text{cm}^{-3})$
	$5783^{+157}_{-175}$	$4.539^{+0.037}_{-0.212}$	$-0.080^{+0.300}_{-0.300}$	$0.880^{+0.278}_{-0.087}$	$0.977^{+0.116}_{-0.116}$	$2.021^{+0.416}_{-1.061}$
	+3%/-3%	+1%/-5%	+375%/-375%	+32%/-10%	+12%/-12%	+21%/-52%
Source	PHO1	KIC0	KIC0	DSEP		

KIC = Kepler Input Catalog; PHO = Photometry; SPE = Spectroscopy; AST = Asteroseismology  
 TRA = Transits; DESP = Dartmouth Models; MULT = Multiple Models

### Secondary Eclipse Parameters for KIC 007549209-01 / KOI 1518.01

Detrend	Depth (ppm)	$R_p (R_{\oplus})$	$T_{\text{max}} (K)$	$T_{\text{obs}} (K)$	$A_{\text{obs}}$
DV	$-53 \pm 15$	$2.79^{+0.46}_{-0.26}$	$816^{+61}_{-36}$	$3448^{+154}_{-176}$	$109^{+45}_{-37}$
Alt.	$-45 \pm 16$	$2.41^{+0.40}_{-0.23}$	$817^{+58}_{-39}$	$3497^{+224}_{-243}$	$121^{+62}_{-52}$

$T_{\text{max}}$  = Theoretical Maximum Planetary Temperature

$T_{\text{obs}}$  = Observed Planetary Temperature (Assuming  $A=0.3$ )

$A_{\text{obs}}$  = Observed Albedo (Assuming  $T=0$ )

If a secondary eclipse is present, the system is likely an EB if  $T_{\text{obs}} \gg T_{\text{max}}$  AND  $A_{\text{obs}} \gg 1.0$



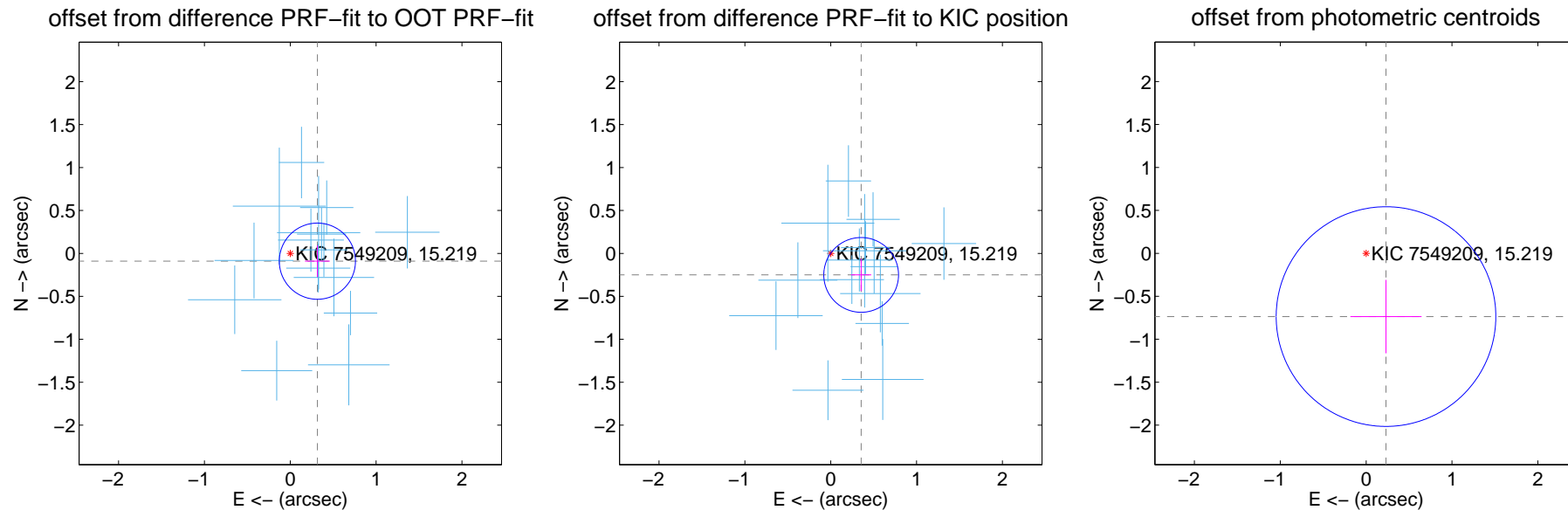
## DV Centroid Data

Supplemental centroid analysis for 007549209-01. Kepler magnitude: 15.22. Transit SNR 29.37

There are 15 quarters with good PRF difference image offsets

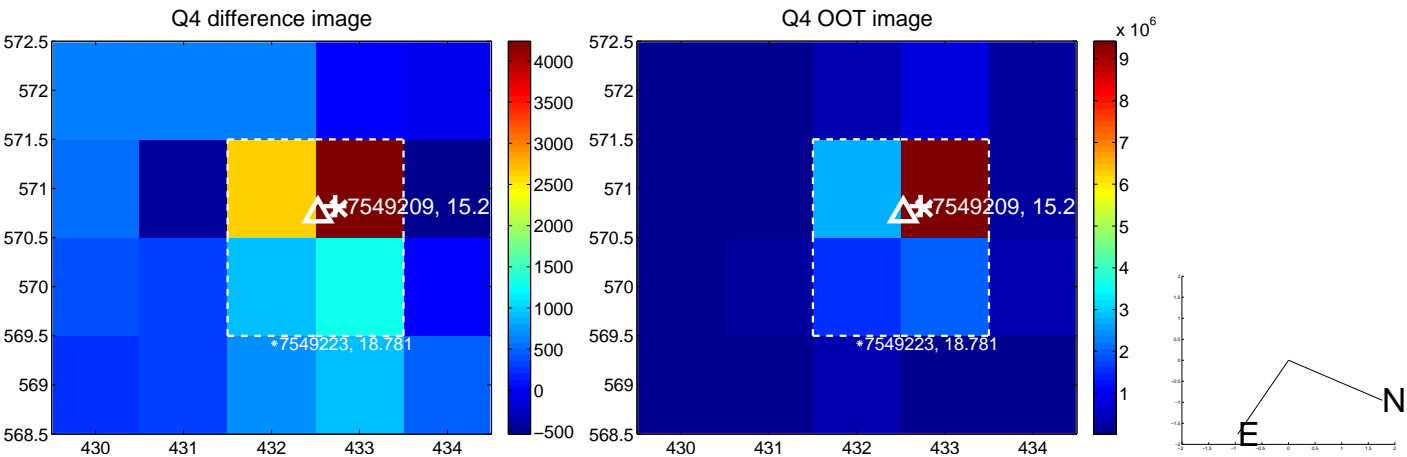
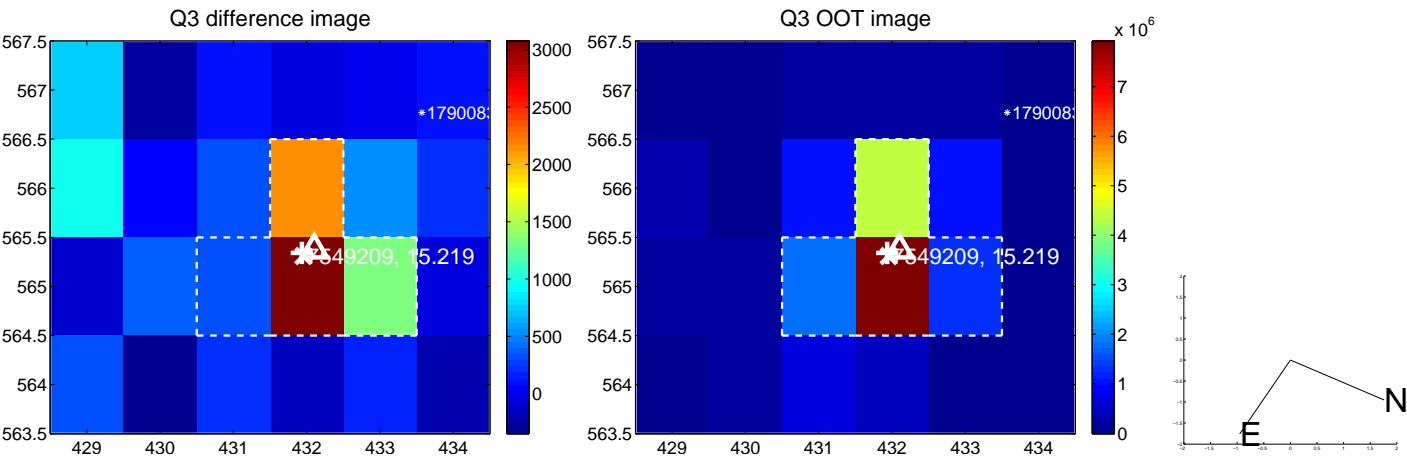
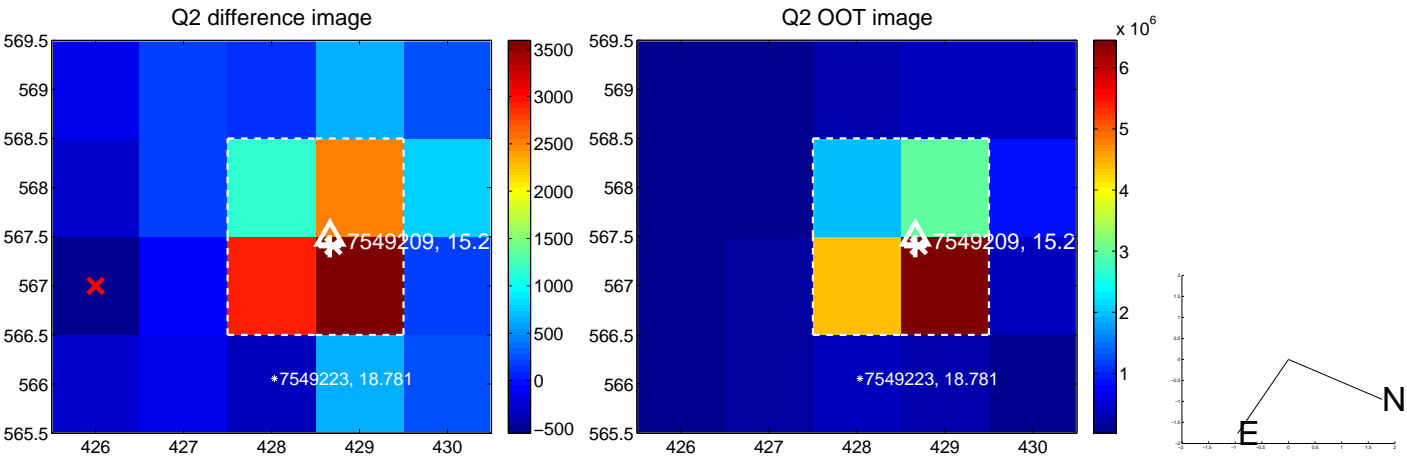
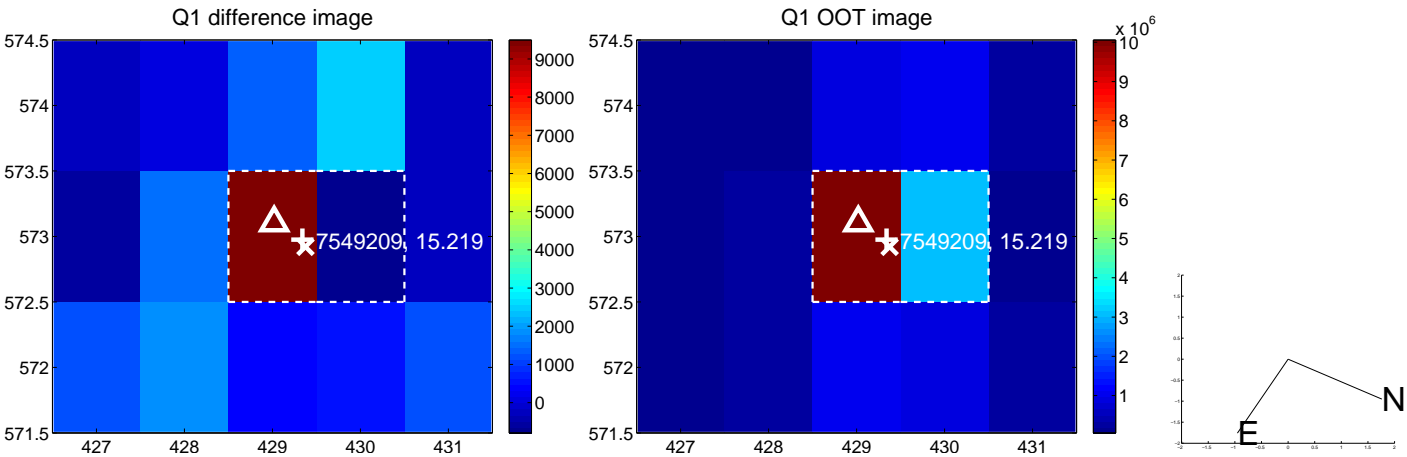
The direct PRF centroid is offset from the target star catalog position by about 0.22 arcsec

	Distance in arcsec	Distance / $\sigma$	$\Delta$ RA	$\Delta$ Dec
PRF-fit source offset from OOT	$0.328 \pm 0.148$	2.22	$-0.316 \pm 0.144$	$-0.091 \pm 0.185$
PRF-fit source offset from KIC position	$0.434 \pm 0.145$	2.99	$-0.354 \pm 0.118$	$-0.250 \pm 0.189$
photometric centroid source offset	$0.77 \pm 0.43$	1.81	$-0.23 \pm 0.41$	$-0.74 \pm 0.43$

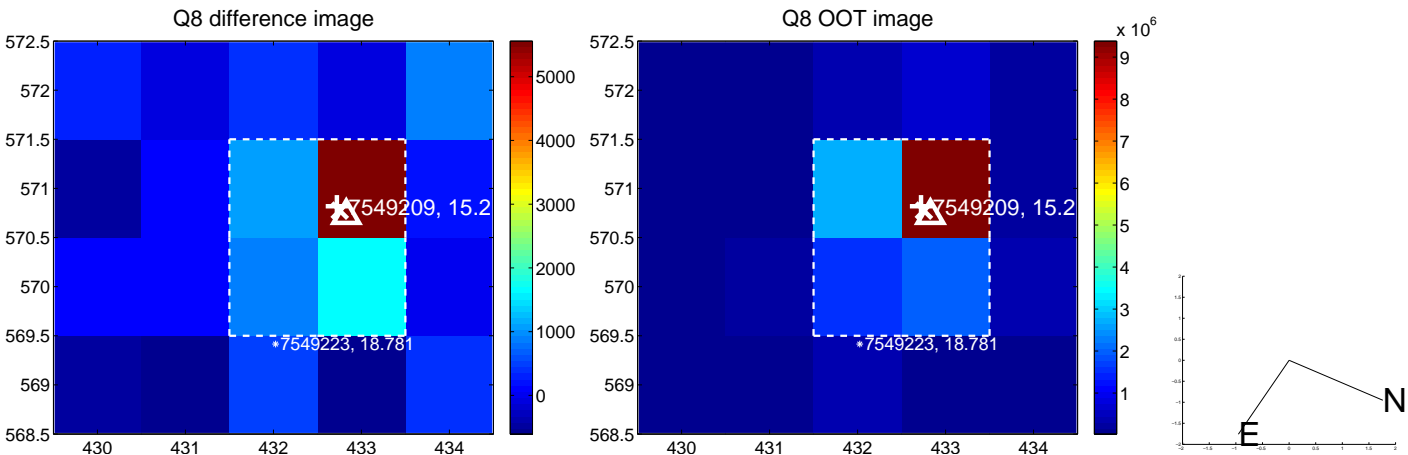
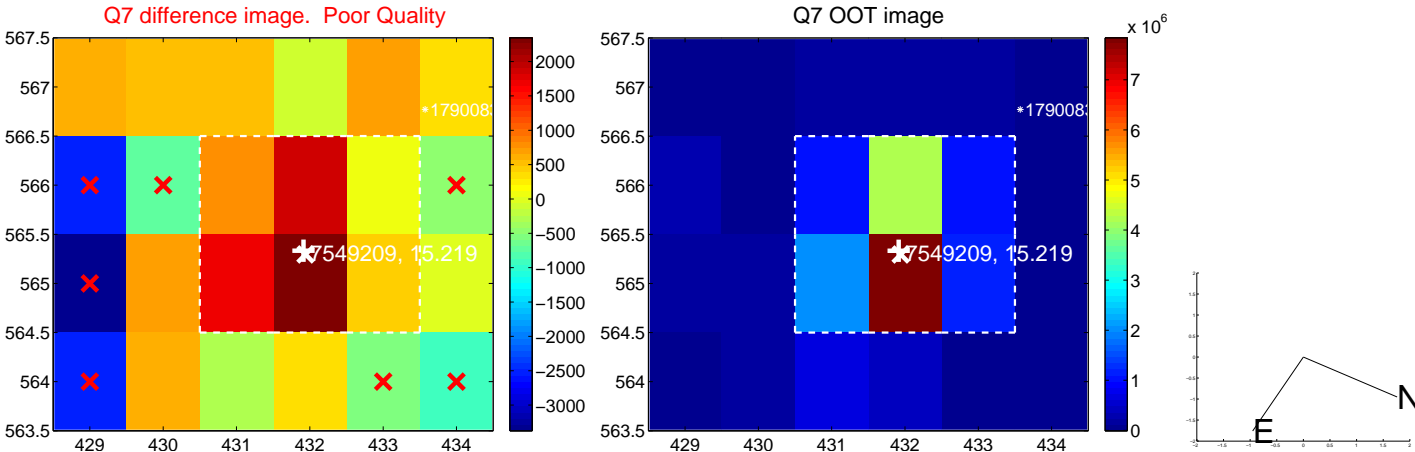
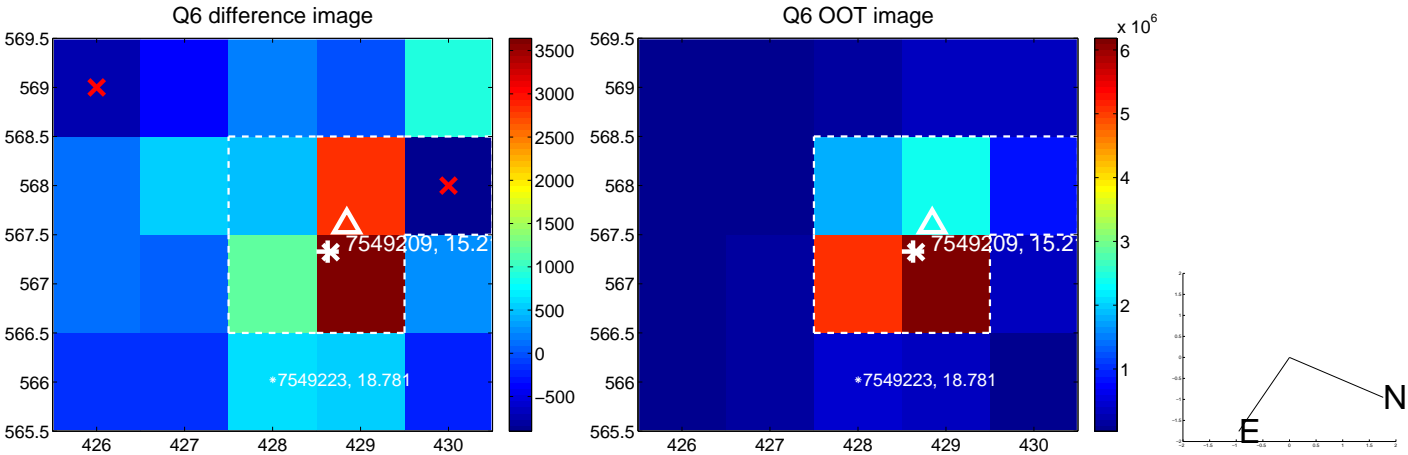
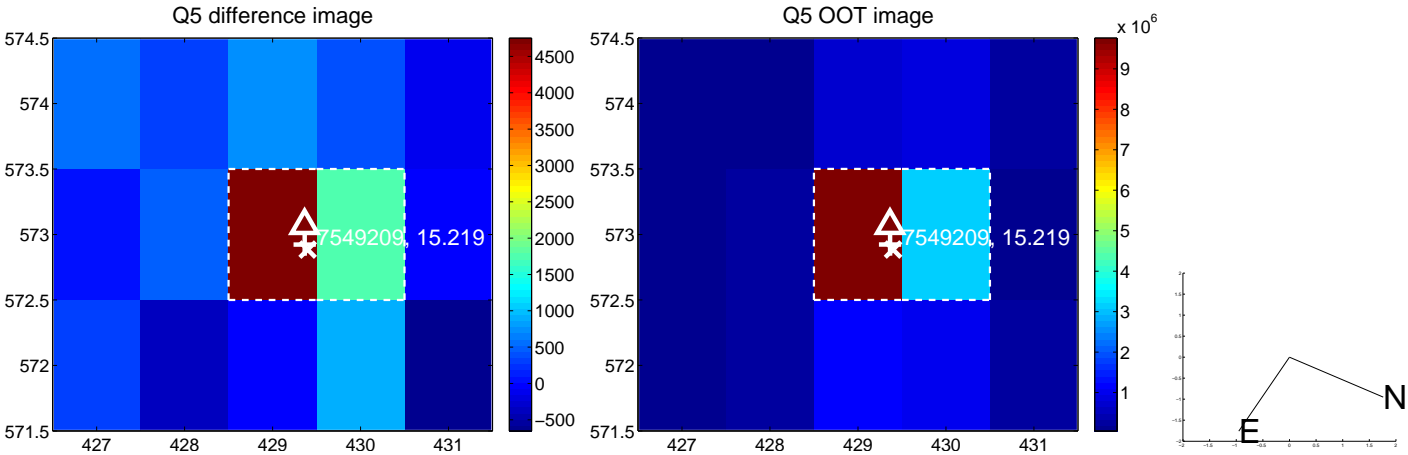


Centroid source offsets from the target star reconstructed from PRF and photometric centroids. **Sky blue crosses:** good quarterly centroid offsets; **Vermillion crosses:** bad quarterly centroid offsets; magenta cross: average over quarters. Length of the crosses: one- $\sigma$  uncertainty. Blue circle: three- $\sigma$ . Red \*: target star. Blue \*: Other stars. Text next to a star gives its KIC ID and kepmag. KIC IDs > 15,000,000 are from the UKIRT catalog.

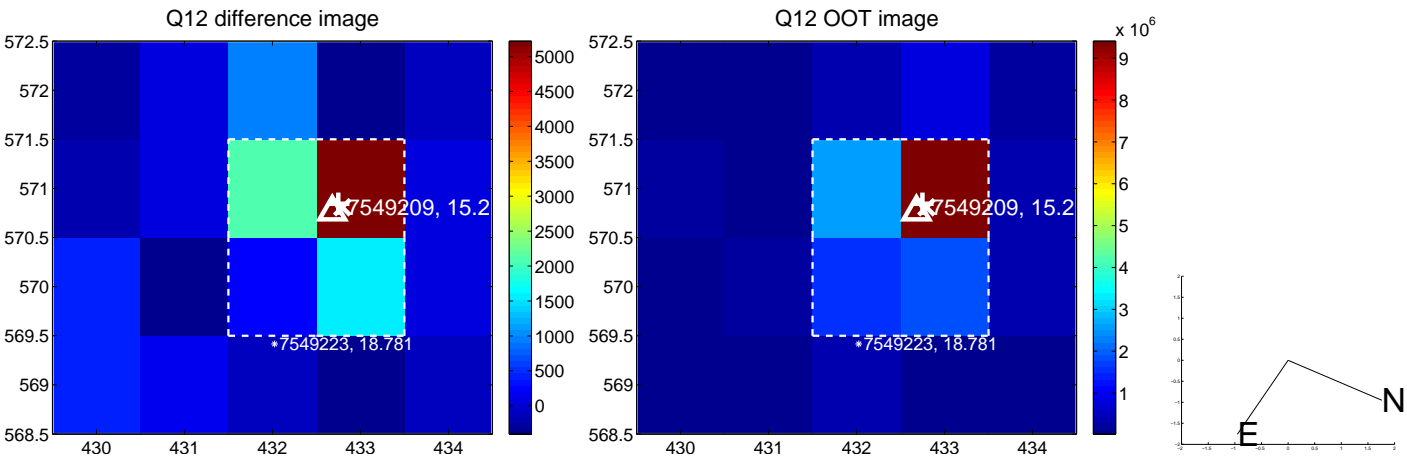
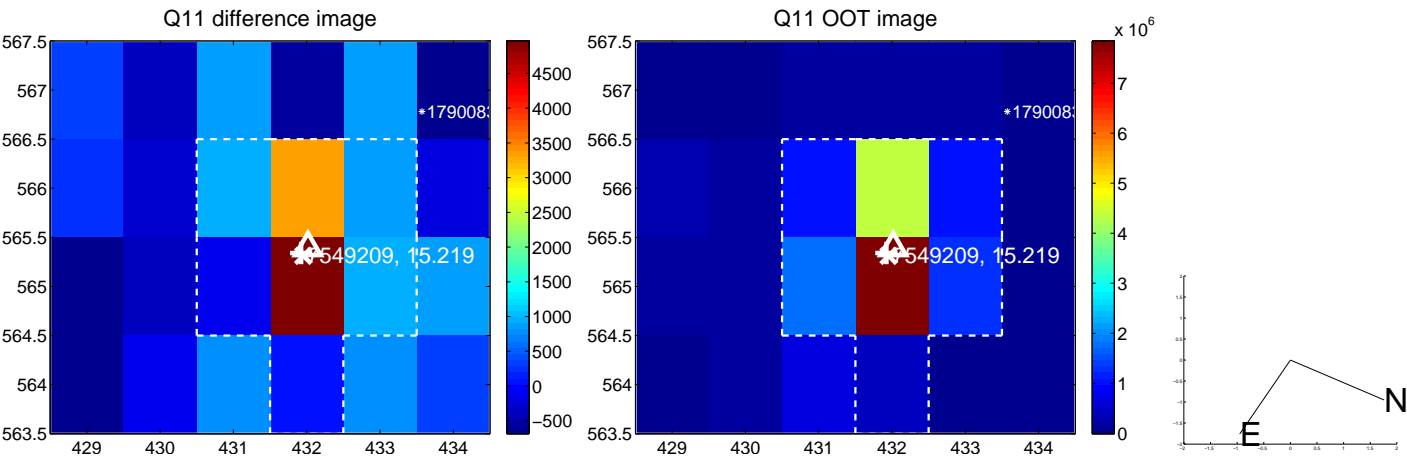
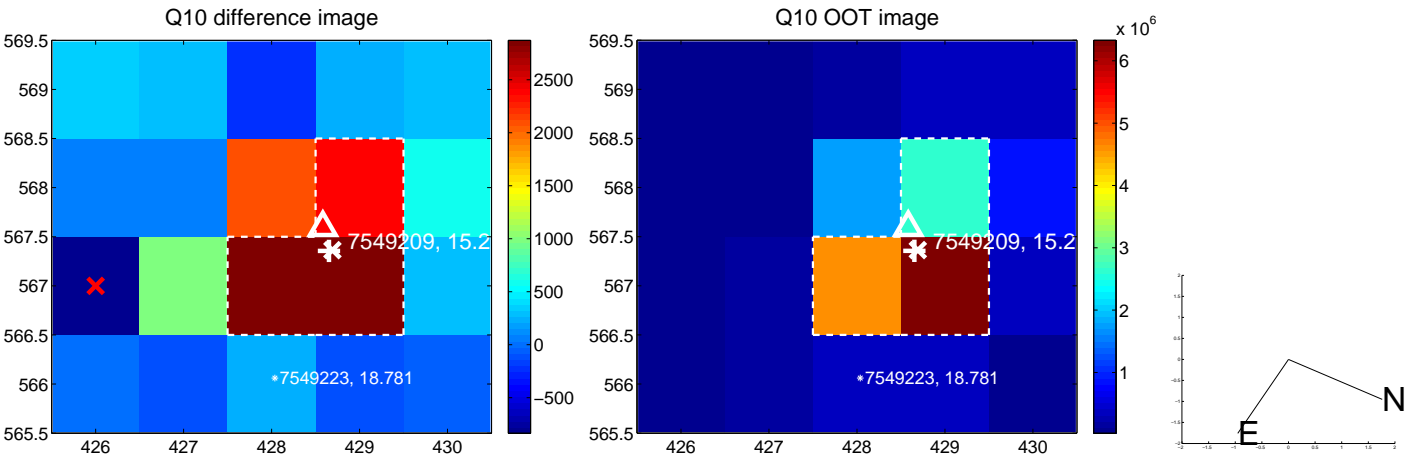
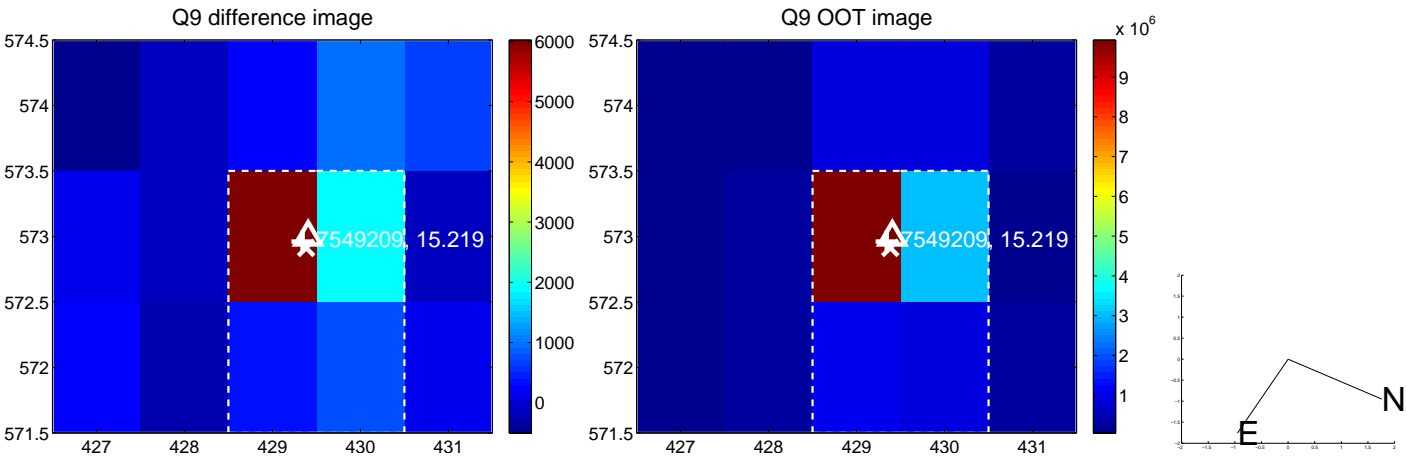
white  $\times$ : KIC target position; +: OOT centroid;  $\triangle$ : difference centroid. red  $\times$ : large negative pixel value.



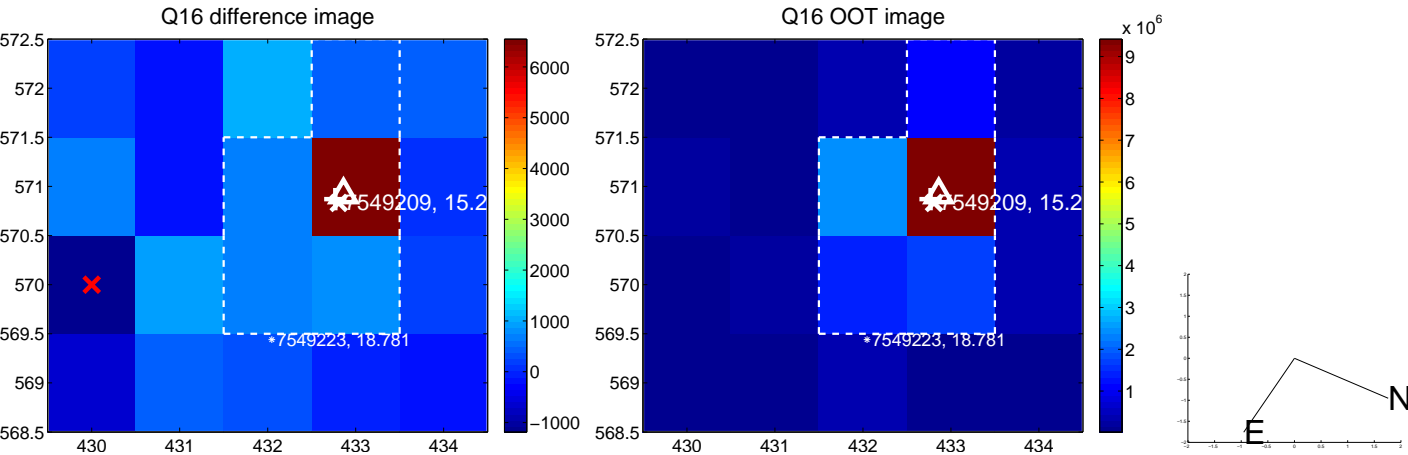
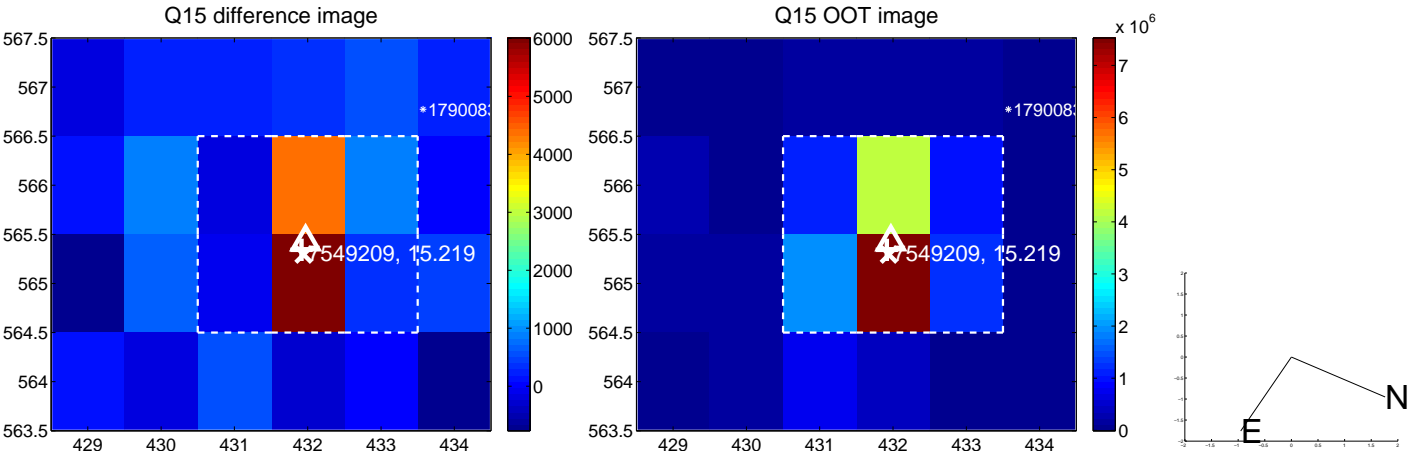
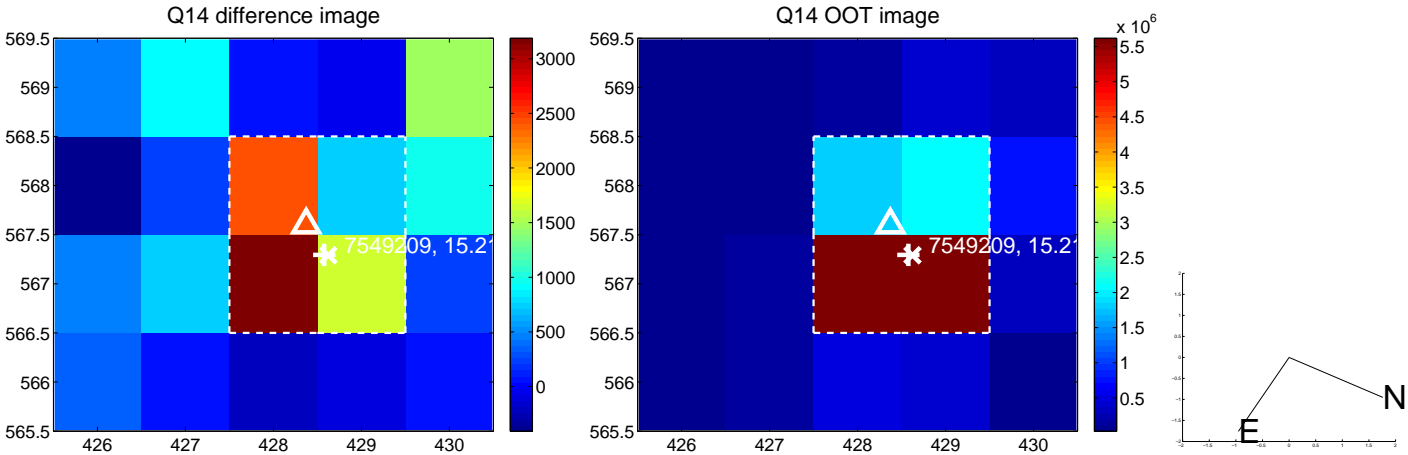
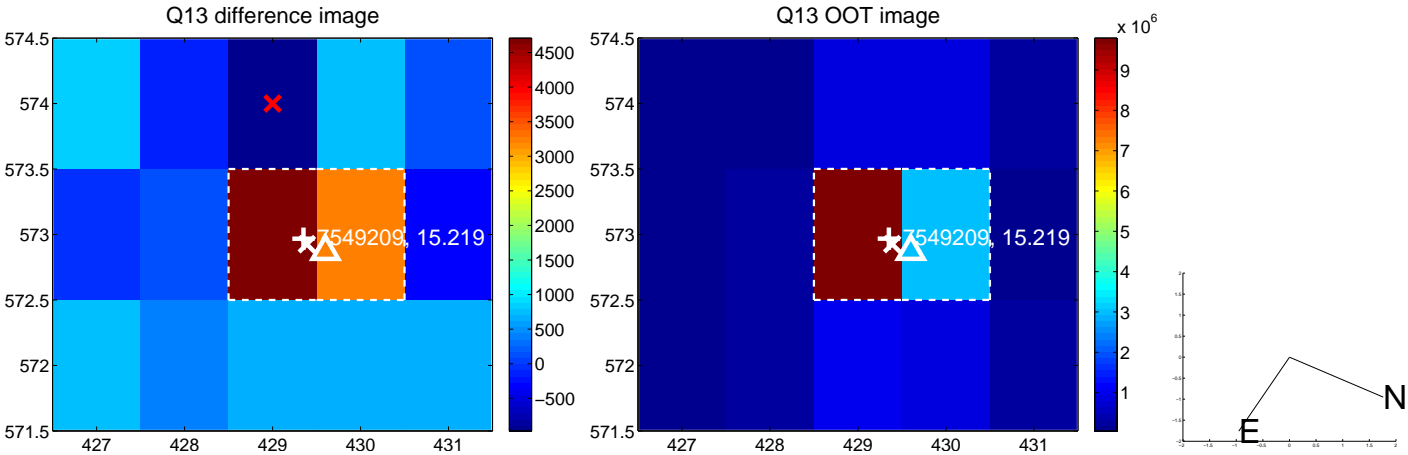
white  $\times$ : KIC target position; +: OOT centroid;  $\triangle$ : difference centroid. red  $\times$ : large negative pixel value.



white  $\times$ : KIC target position; +: OOT centroid;  $\triangle$ : difference centroid. red  $\times$ : large negative pixel value.

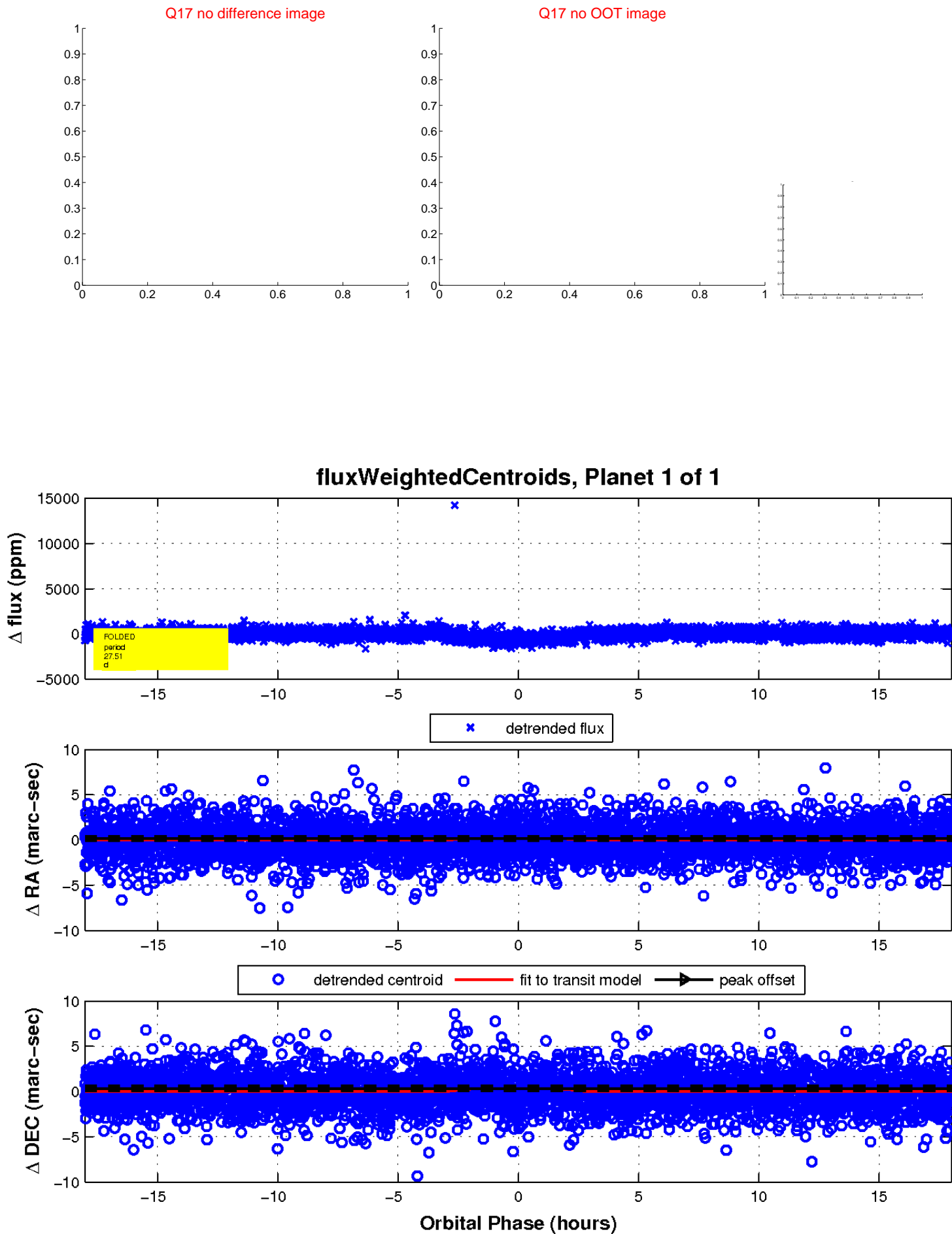


white  $\times$ : KIC target position; +: OOT centroid;  $\triangle$ : difference centroid. red  $\times$ : large negative pixel value.





white  $\times$ : KIC target position;  $+$ : OOT centroid;  $\triangle$ : difference centroid. red  $\times$ : large negative pixel value.



UKIRT Image

Declination

