

KIC 007417813

Q1-17 DR25 TCE Parameters

TCE	Run Type	KOI?	Period (Days)	Epoch (BKJD)	Depth (ppm)	Duration (Hours)	MES	SNR	R_{\star} (R_{\odot})	T_{\star} (K)	R_p (R_{\oplus})	S_p (S_{\oplus})
007417813-01	OBS	No	303.503772	205.934596	294.6	6.385	7.4	5.8	0.56	3662	1.05	0.09

Robovetter Results

TCE	Run Type	Disp	Score	N	S	C	E	Comments
007417813-01	OBS	FP	0.00	1	0	0	0	INDIV_TRANS_CHASES_MARSHALL—MOD_NONUNIQ_DV—MOD_TER_DV—CENT_FEW_DIFFS

Notes: OBS = Observed. INJ = Injected. INV = Inverted. SCR = Scrambled.

N = Not Transit-Like. S = Stellar Eclipse. C = Centroid Offset. E = Ephemeris Match.

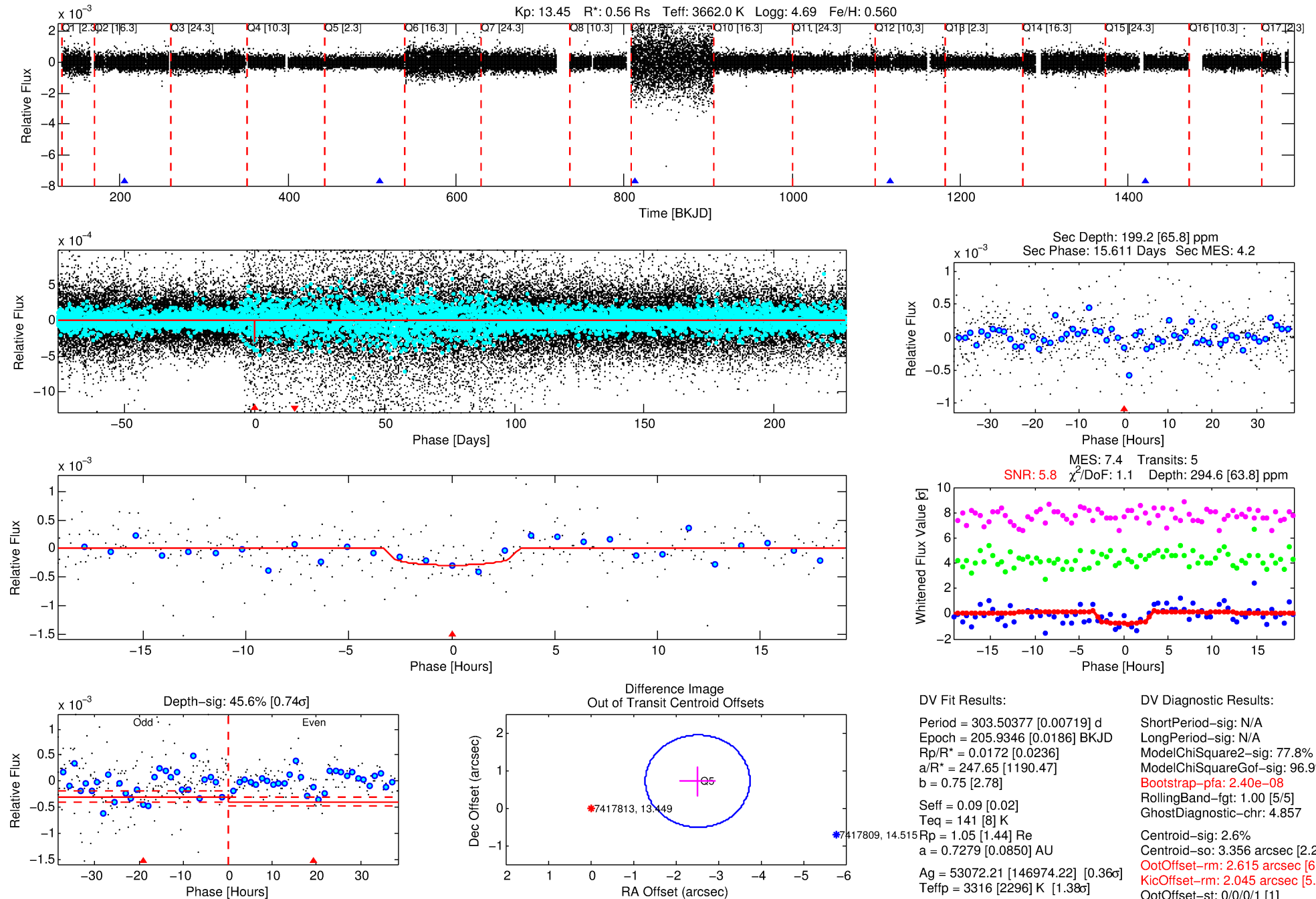
See http://exoplanetarchive.ipac.caltech.edu/docs/API_kepcandidate_columns.html#proj_disp_col for comment definitions.

Ephemeris Match Information For 007417813-01

No Significant Match Found

DV One-Page Summary

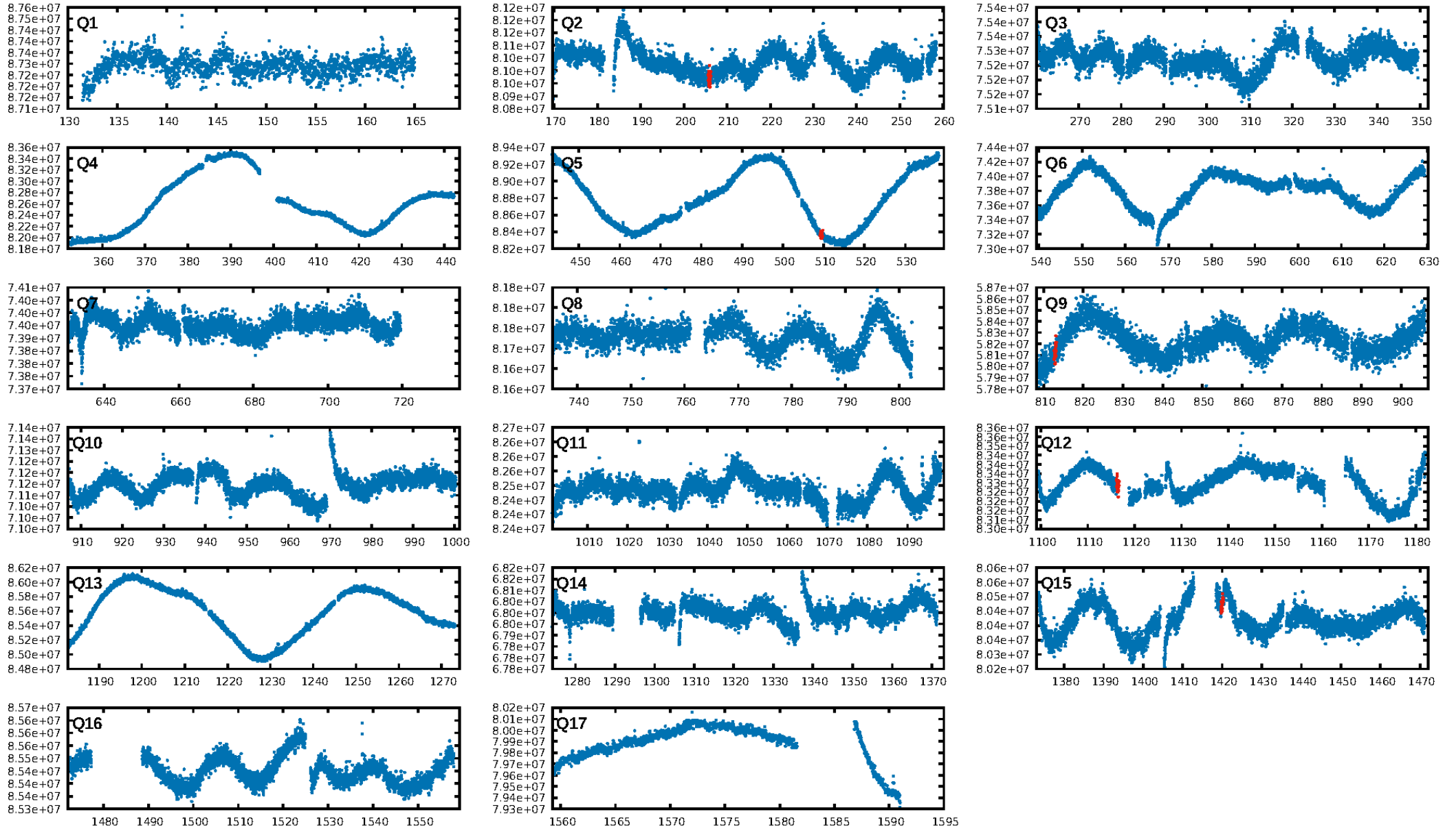
KIC: 7417813 Candidate: 1 of 1 Period: 303.504 d



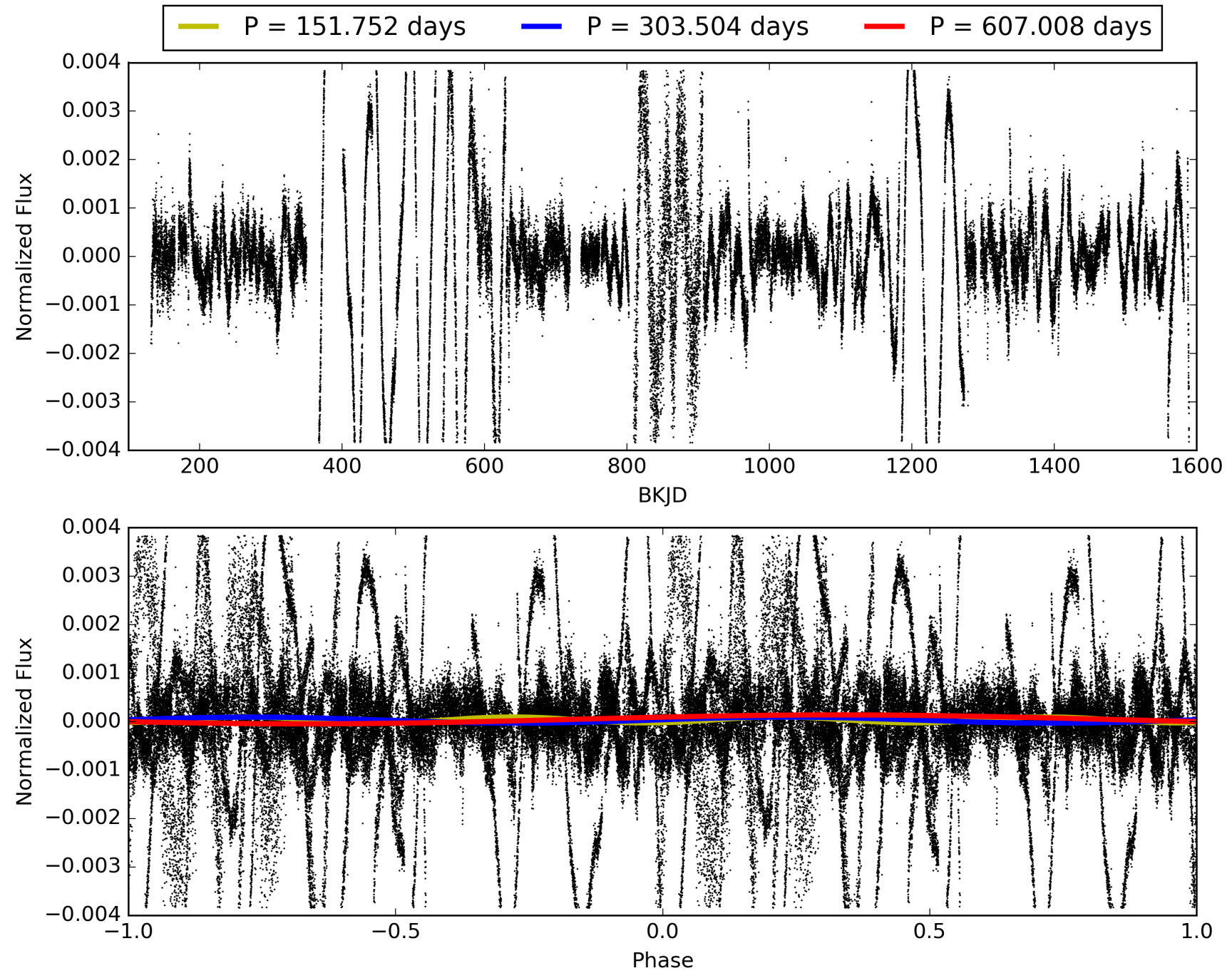
Software Revision: svn+ssh://murzim/repo/soc/tags/release/9.3.42@60958 -- Date Generated: 31-Jan-2016 23:28:53 Z

This Data Validation Report Summary was produced in the Kepler Science Operations Center Pipeline at NASA Ames Research Center

TCE 007417813-01, PDC Light Curves

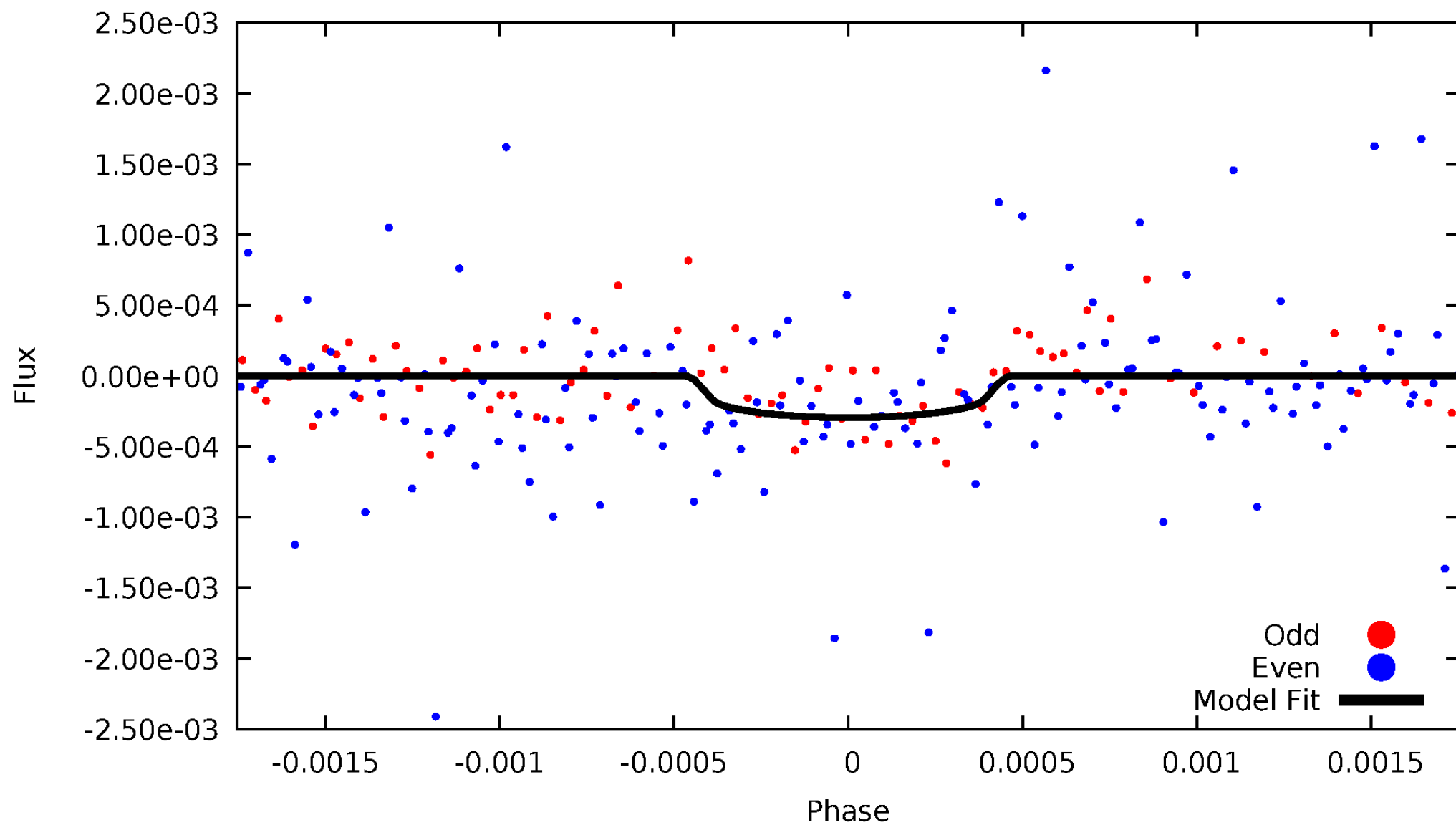


TCE 007417813-01



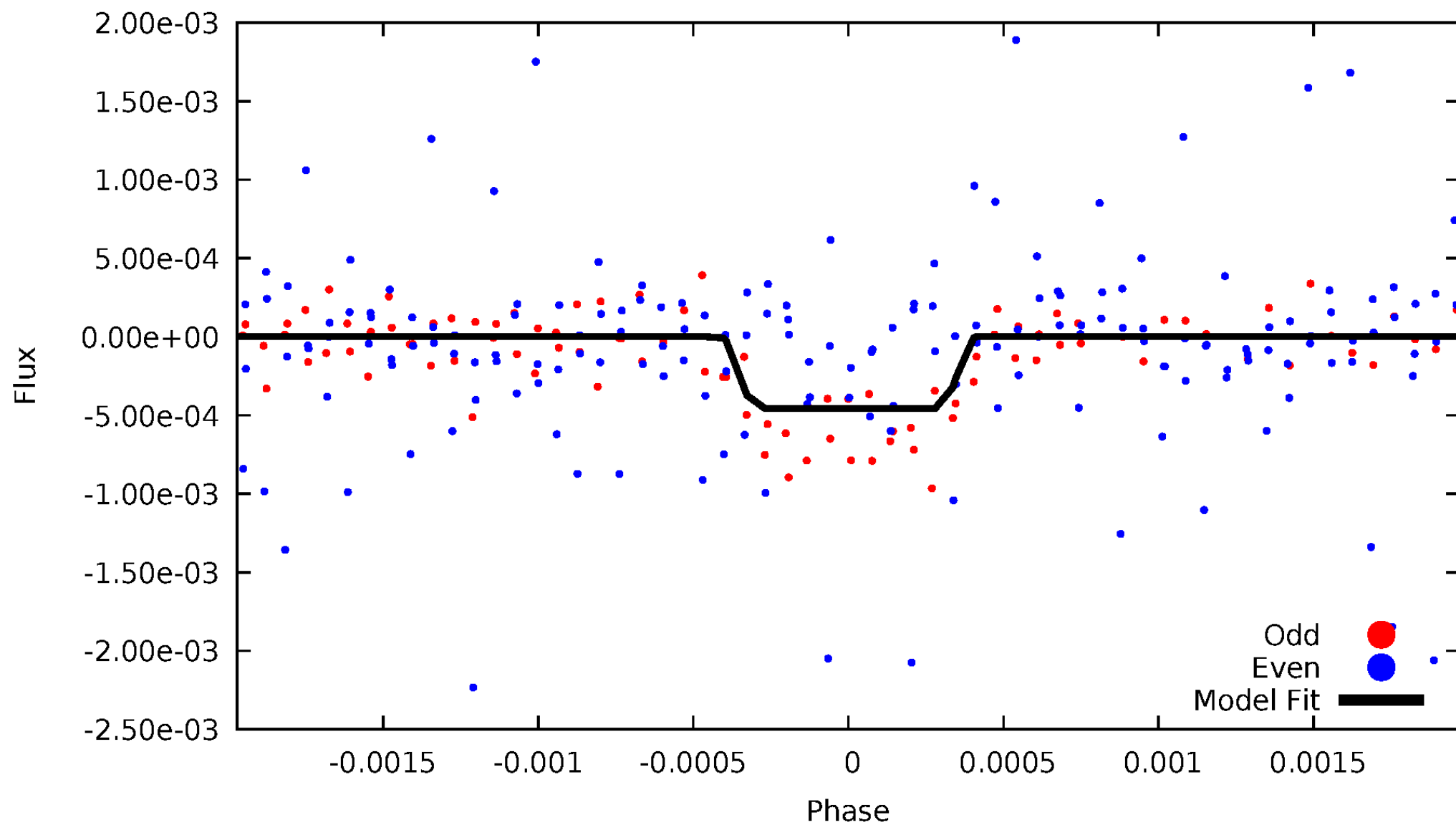
DV Odd/Even

TCE 007417813-01



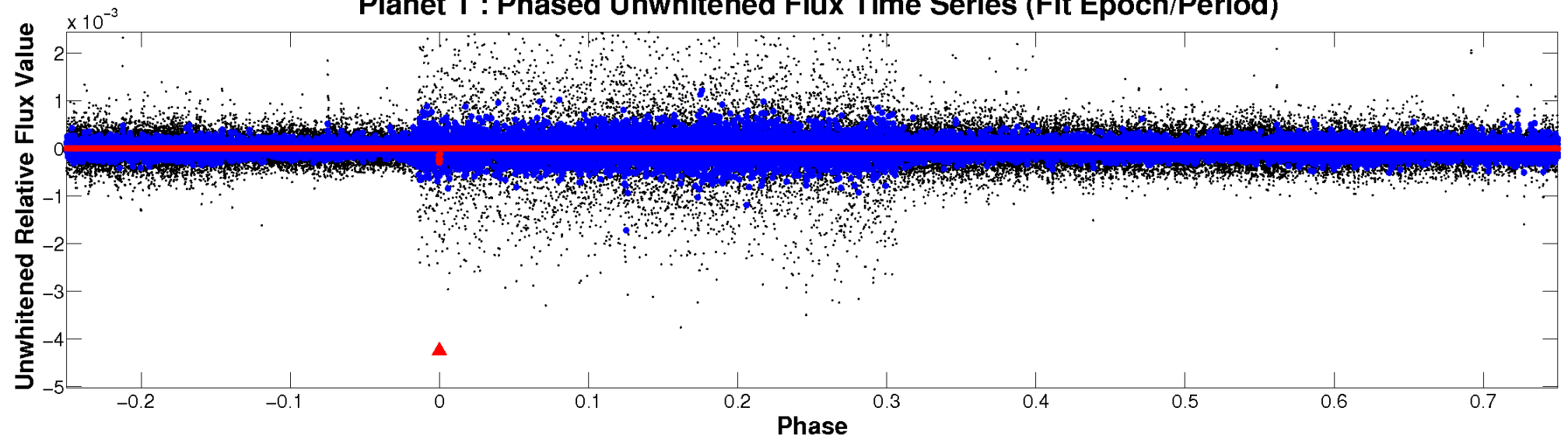
ALT Odd/Even

TCE 007417813-01

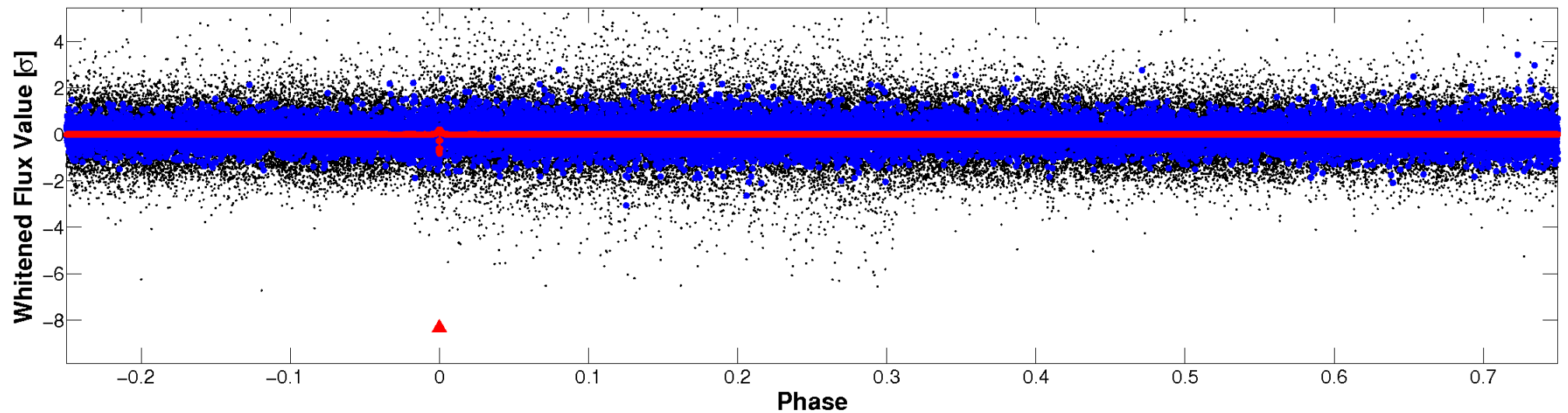


Non-Whitened Vs. Whitened Light Curve

Planet 1 : Phased Unwhitened Flux Time Series (Fit Epoch/Period)

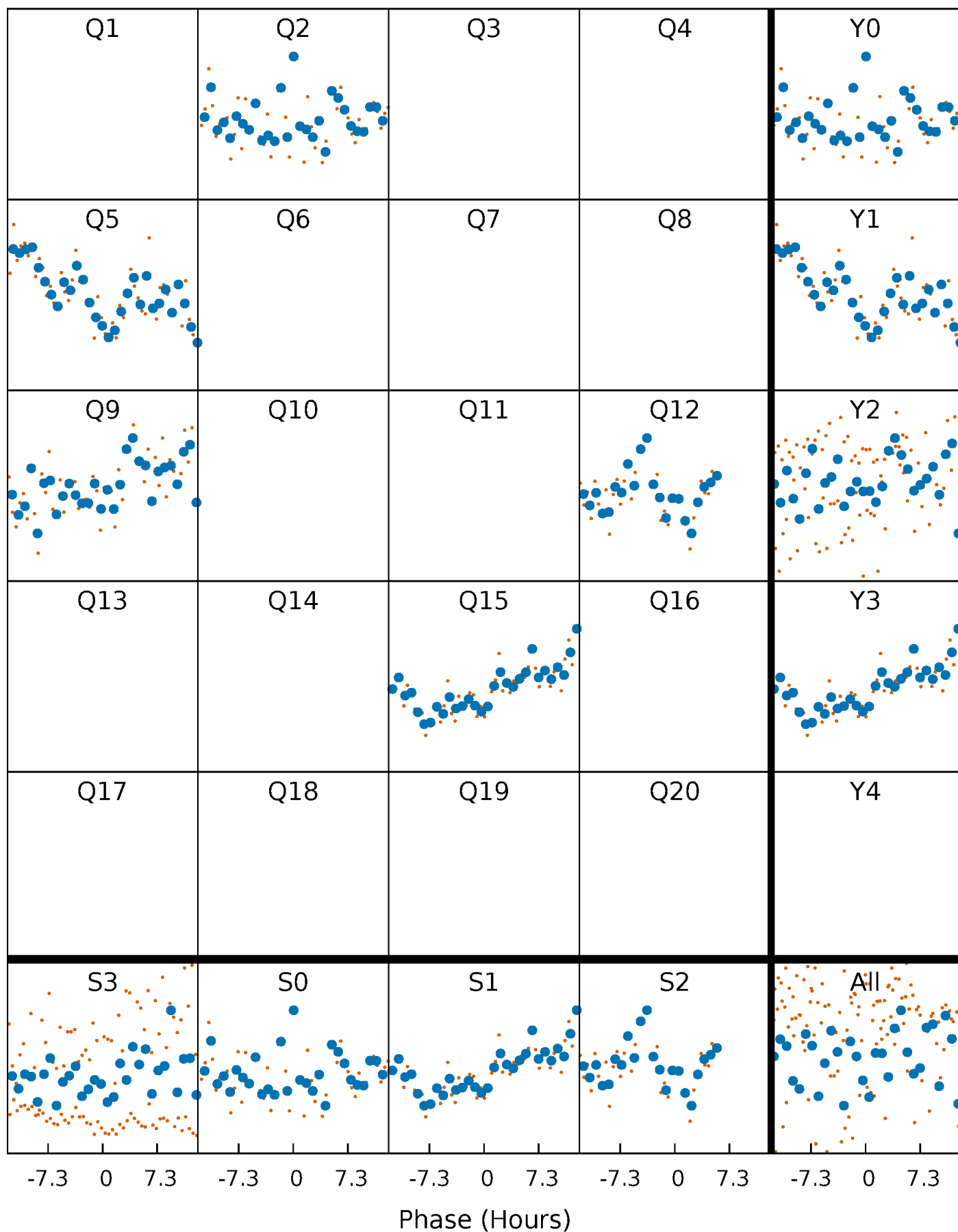


Planet 1 : Phased Whitened Flux Time Series (Fit Epoch/Period)



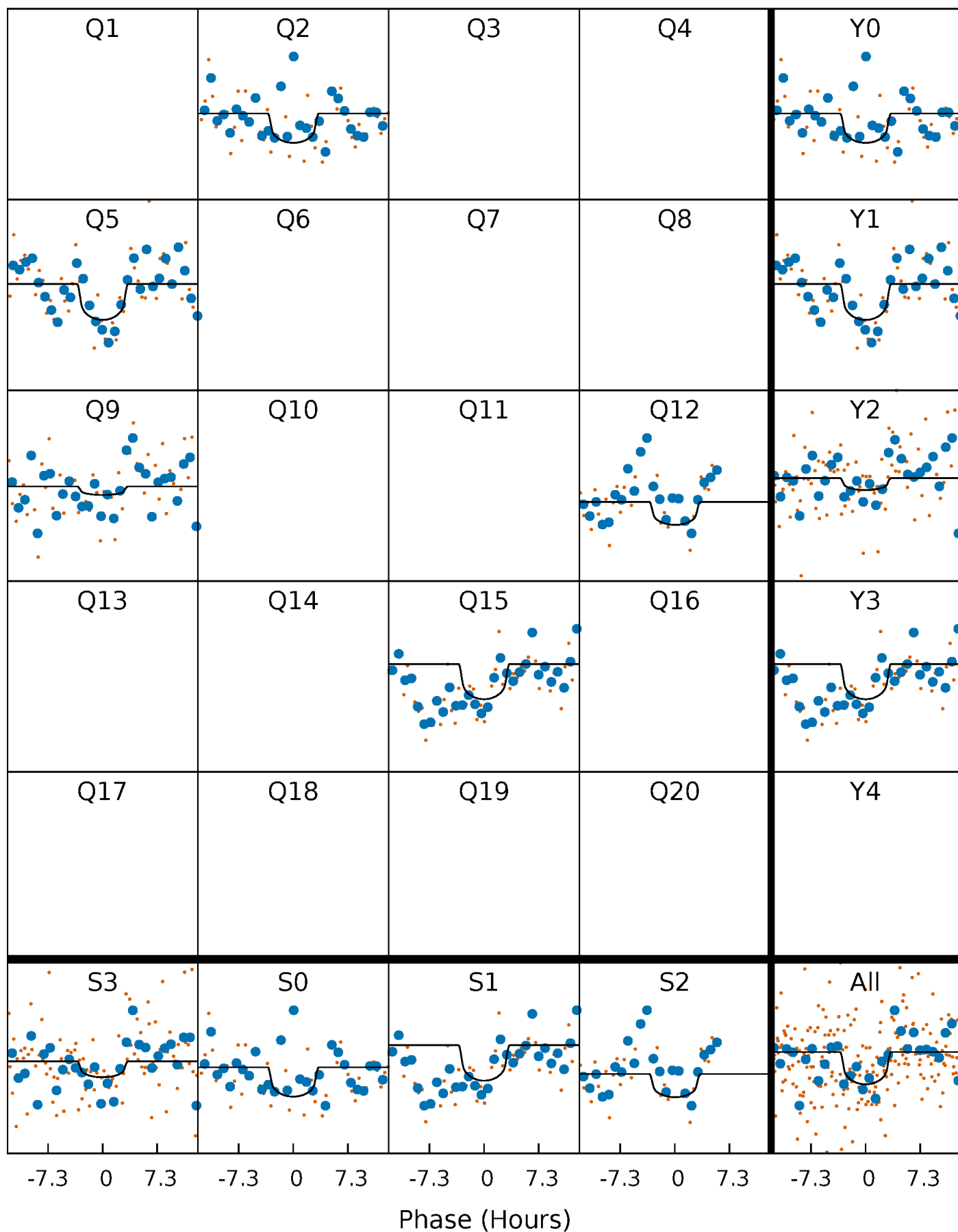
PDC Quarter-Phased Transit Curves

TCE 007417813-01 P=303.503772 Days $T_0=205.934596$ (BKJD)



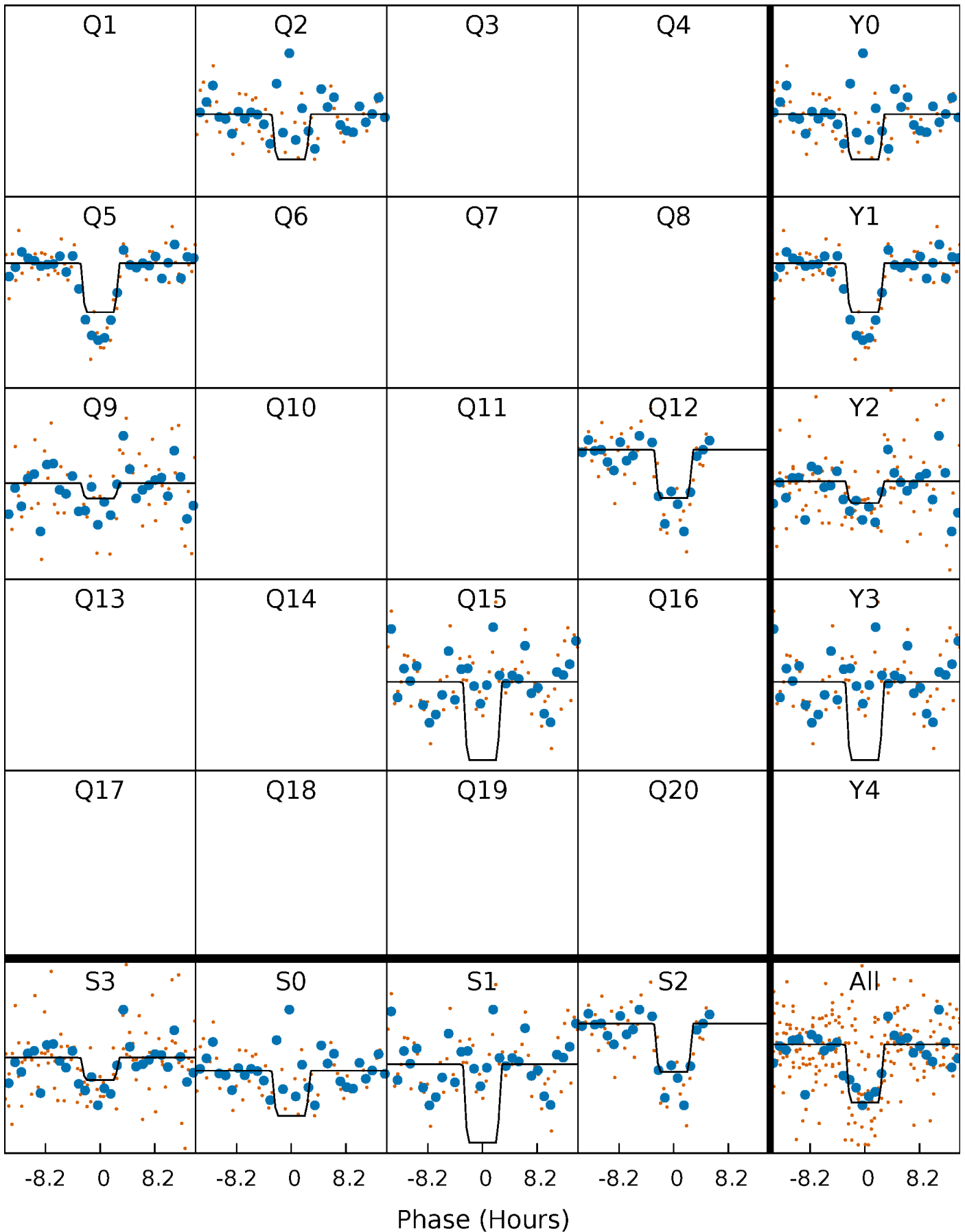
DV Quarter-Phased Transit Curves

TCE 007417813-01 P=303.503772 Days $T_0=205.934596$ (BKJD)



Alt. Detrend Quarter-Phased Transit Curves

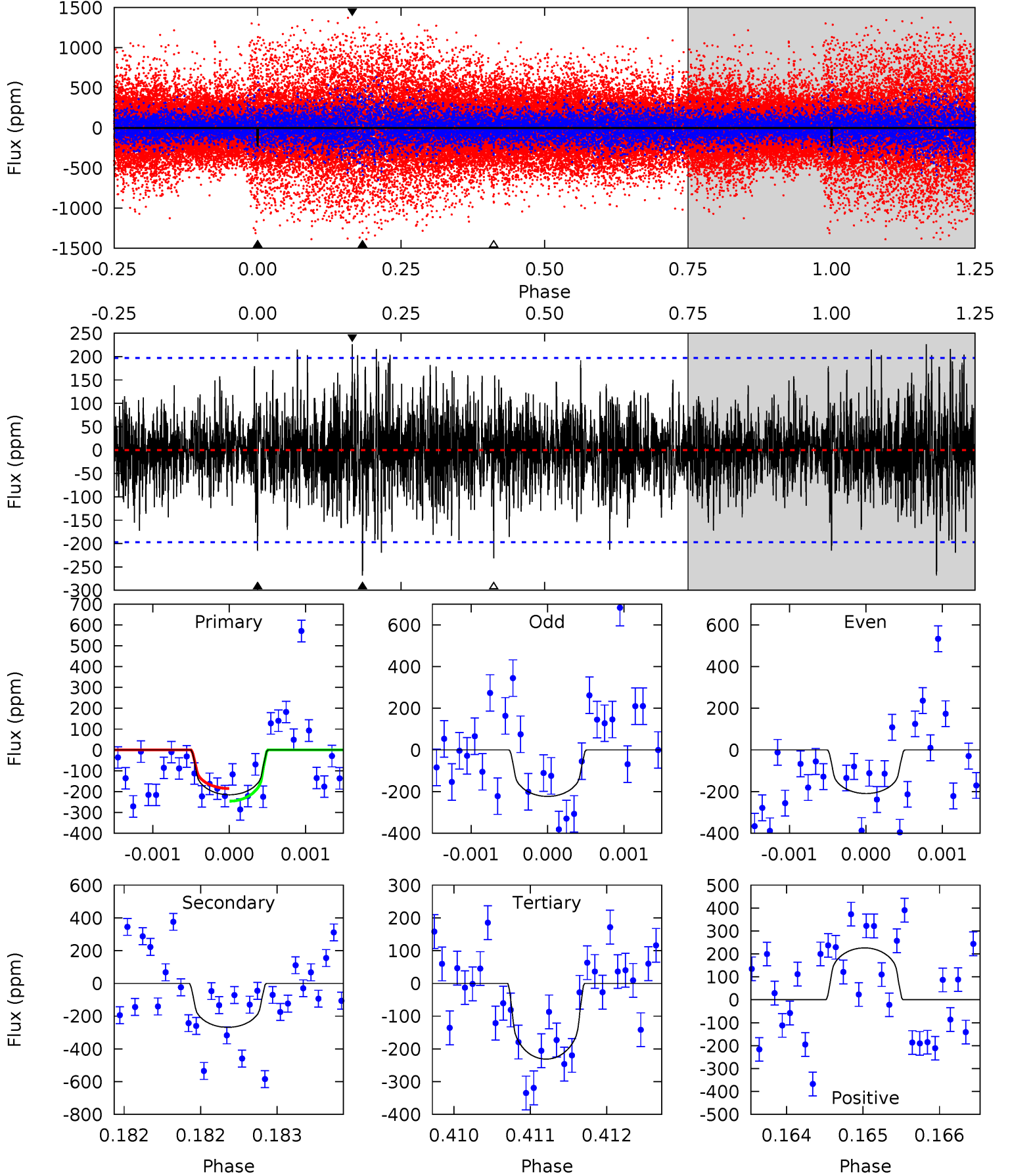
TCE 007417813-01 P=303.499667 Days $T_0=205.950653$ (BKJD)



DV Model-Shift Uniqueness Test

007417813-01, P = 303.503772 Days, E = 205.934596 Days

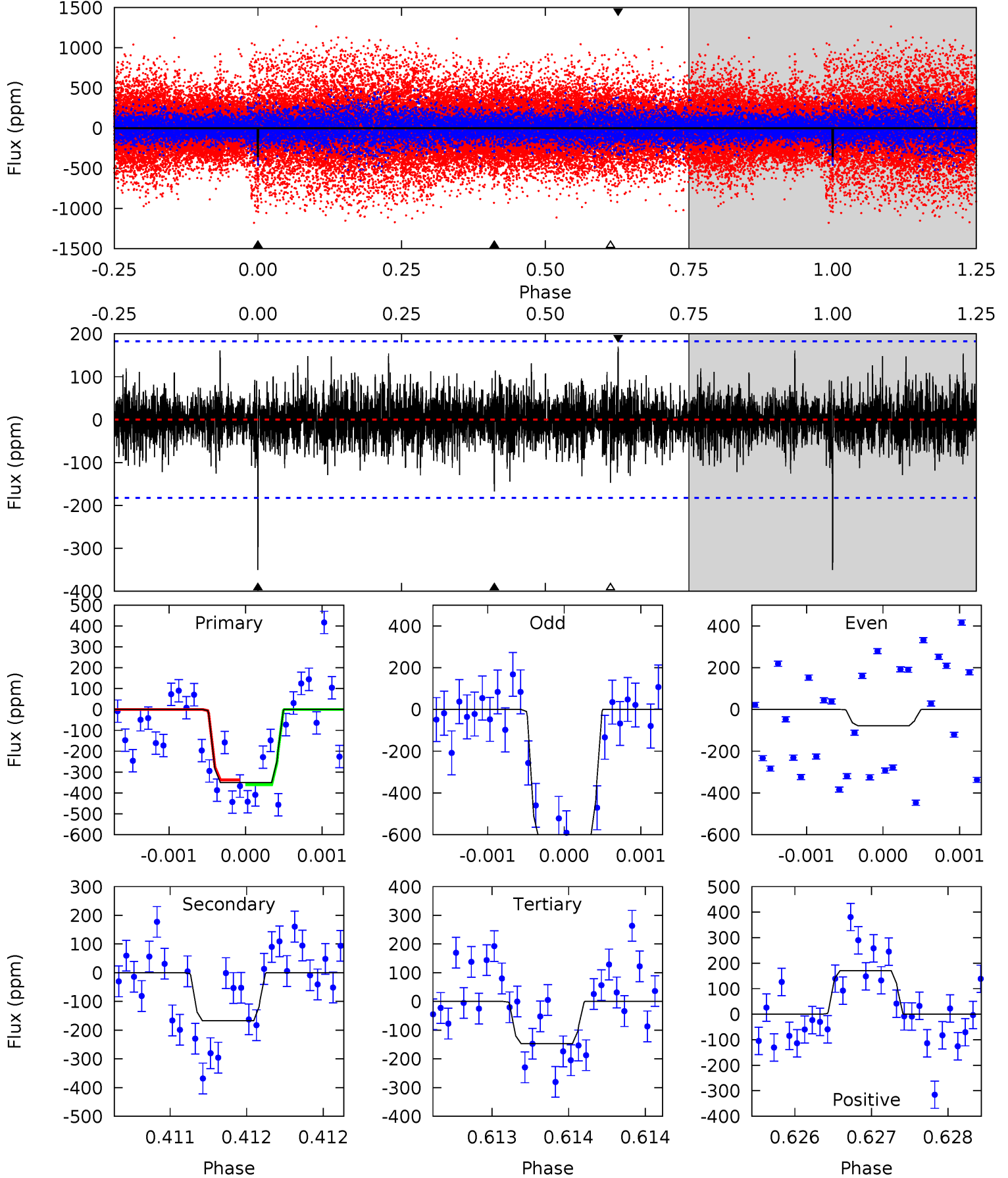
Pri	Sec	Ter	Pos	FA ₁	FA ₂	F _{Red}	Pri-Ter	Pri-Pos	Sec-Ter	Sec-Pos	Odd-Evn	DMM	Shape	TAT
5.96	7.44	6.41	6.27	5.46	3.31	1.62	-0.44	-0.30	1.03	1.17	0.19	1.02	0.46	0.83



Alt Model-Shift Uniqueness Test

007417813-01, P = 303.499667 Days, E = 205.950653 Days

Pri	Sec	Ter	Pos	FA ₁	FA ₂	F _{Red}	Pri-Ter	Pri-Pos	Sec-Ter	Sec-Pos	Odd-Evn	DMM	Shape	TAT
10.5	5.03	4.42	5.11	5.49	3.35	1.14	6.10	5.41	0.61	-0.08	8.26	0.65	0.33	0



Stellar Parameters For KIC 007417813

	$T_{\text{eff}} (K)$	$\log(g)$	$[\text{Fe}/\text{H}]$	$R (R_{\odot})$	$M (M_{\odot})$	$p_{\star} (\text{g}\cdot\text{cm}^{-3})$
	3662^{+117}_{-146}	$4.693^{+0.080}_{-0.020}$	$0.560^{+0.050}_{-0.300}$	$0.557^{+0.030}_{-0.083}$	$0.558^{+0.036}_{-0.071}$	$4.548^{+1.785}_{-0.476}$
	+3%/-4%	+2%/-0%	+9%/-54%	+5%/-15%	+6%/-13%	+39%/-10%
Source	KIC0	KIC0	KIC0	DSEP		

KIC = Kepler Input Catalog; PHO = Photometry; SPE = Spectroscopy; AST = Asteroseismology
 TRA = Transits; DESP = Dartmouth Models; MULT = Multiple Models

Secondary Eclipse Parameters for KIC 007417813-01 / KOI

Detrend	Depth (ppm)	$R_p (R_{\oplus})$	$T_{\text{max}} (K)$	$T_{\text{obs}} (K)$	A_{obs}
DV	-268 ± 36	$1.37^{+1.28}_{-0.87}$	195^{+8}_{-9}	3267^{+1364}_{-547}	$43657^{+273248}_{-32547}$
Alt.	-167 ± 33	$1.57^{+1.31}_{-0.99}$	195^{+7}_{-9}	2952^{+1090}_{-451}	$20495^{+125180}_{-14548}$

T_{max} = Theoretical Maximum Planetary Temperature

T_{obs} = Observed Planetary Temperature (Assuming $A=0.3$)

A_{obs} = Observed Albedo (Assuming $T=0$)

If a secondary eclipse is present, the system is likely an EB if $T_{\text{obs}} \gg T_{\text{max}}$ AND $A_{\text{obs}} \gg 1.0$

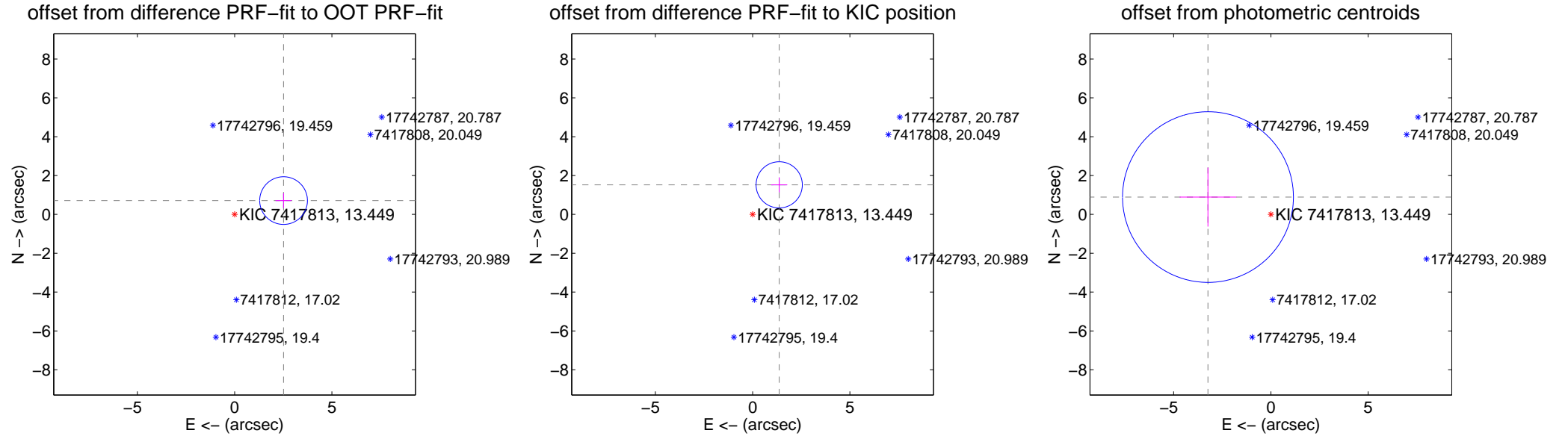
DV Centroid Data

Supplemental centroid analysis for 007417813-01. Kepler magnitude: 13.45. Transit SNR 5.81

There are 1 quarters with good PRF difference image offsets

The direct PRF centroid is offset from the target star catalog position by about 1.41 arcsec

	Distance in arcsec	Distance / σ	Δ RA	Δ Dec
PRF-fit source offset from OOT	2.615 \pm 0.409	6.39	-2.516 \pm 0.411	0.711 \pm 0.384
PRF-fit source offset from KIC position	2.045 \pm 0.396	5.16	-1.367 \pm 0.411	1.522 \pm 0.384
photometric centroid source offset	3.36 \pm 1.46	2.29	3.24 \pm 1.46	0.89 \pm 1.52



Centroid source offsets from the target star reconstructed from PRF and photometric centroids. Sky blue crosses: good quarterly centroid offsets; Vermillion crosses: bad quarterly centroid offsets; magenta cross: average over quarters. Length of the crosses: one- σ uncertainty. Blue circle: three- σ . Red *: target star. Blue *: Other stars. Text next to a star gives its KIC ID and kepmag. KIC IDs > 15,000,000 are from the UKIRT catalog.

white \times : KIC target position; $+$: OOT centroid; \triangle : difference centroid. red \times : large negative pixel value.

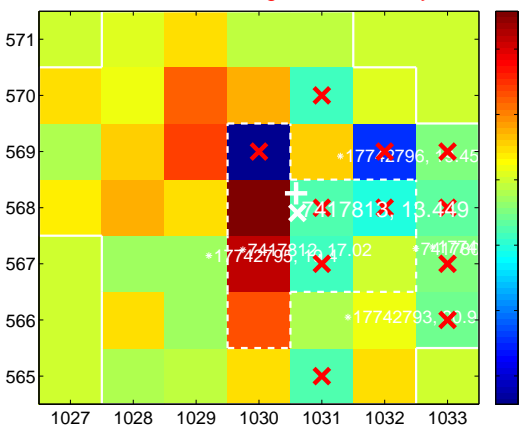
Q1 no difference image



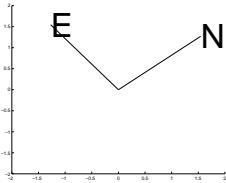
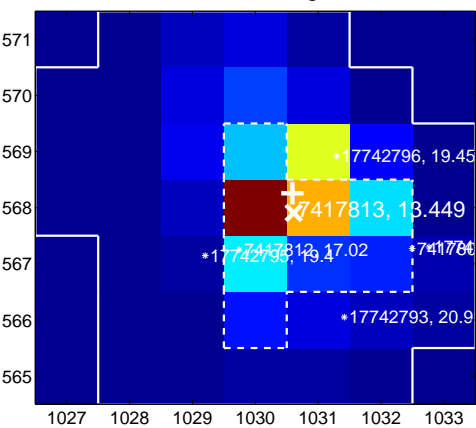
Q1 no OOT image



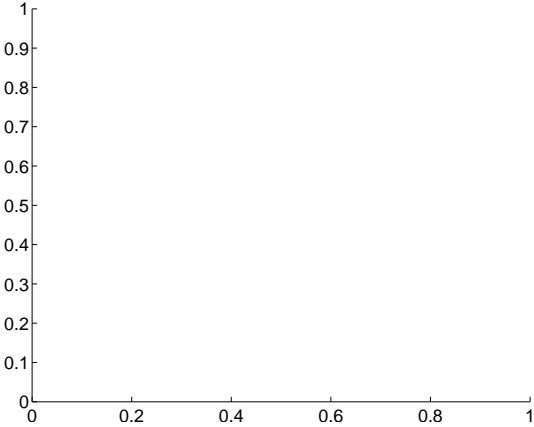
Q2 difference image. Poor Quality



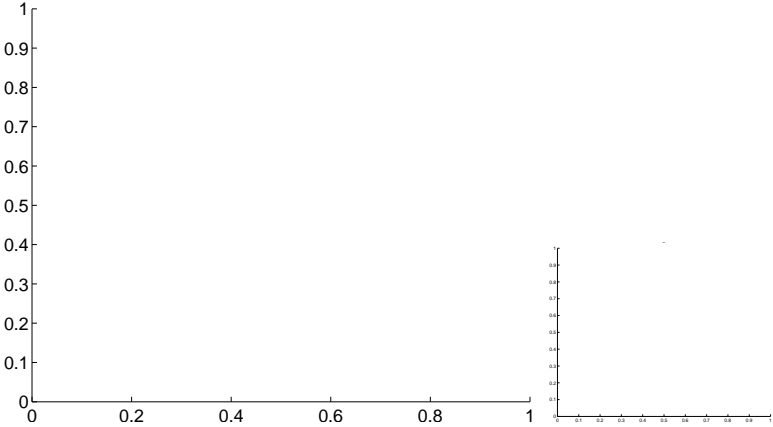
Q2 OOT image



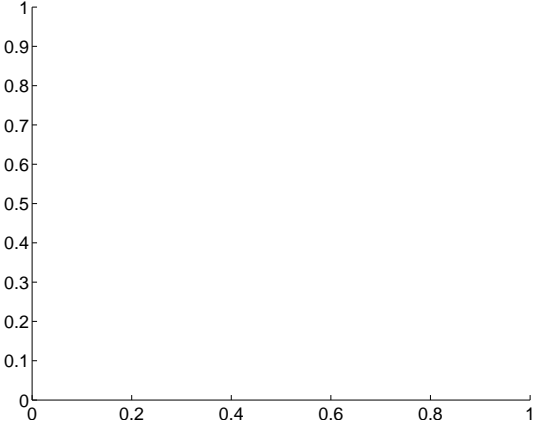
Q3 no difference image



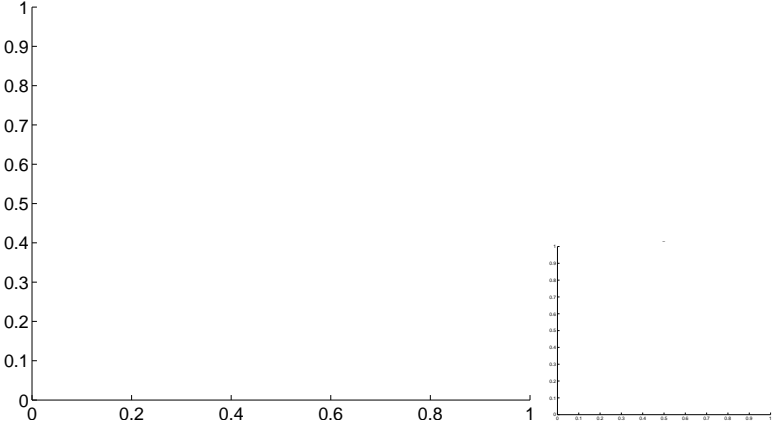
Q3 no OOT image



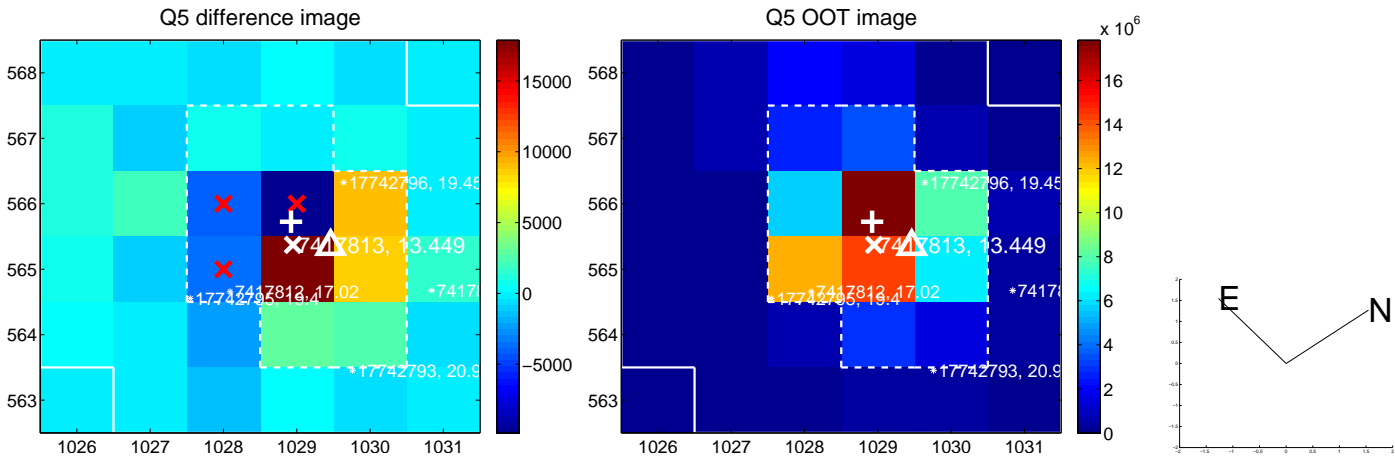
Q4 no difference image



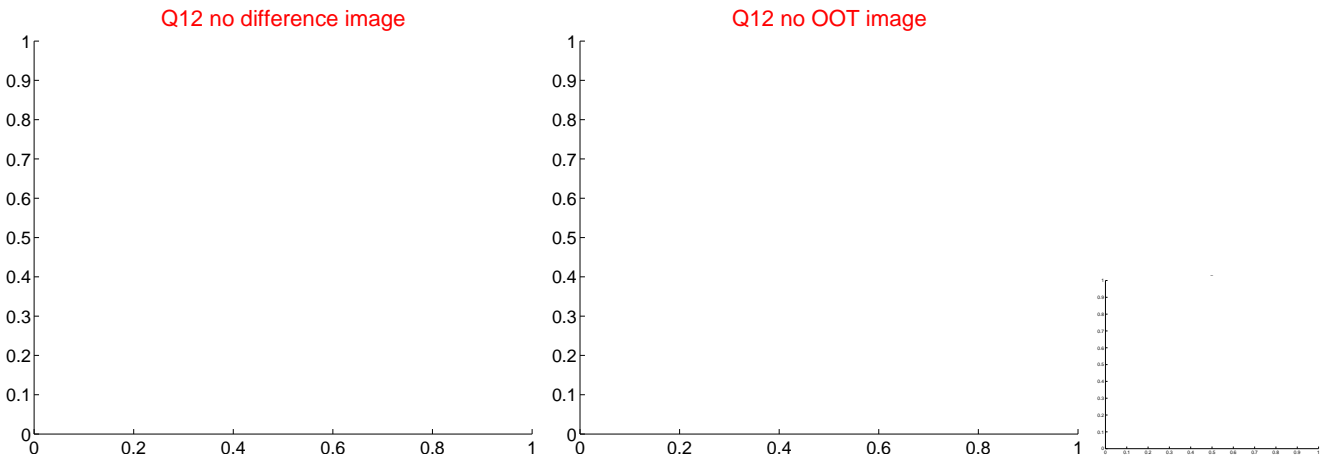
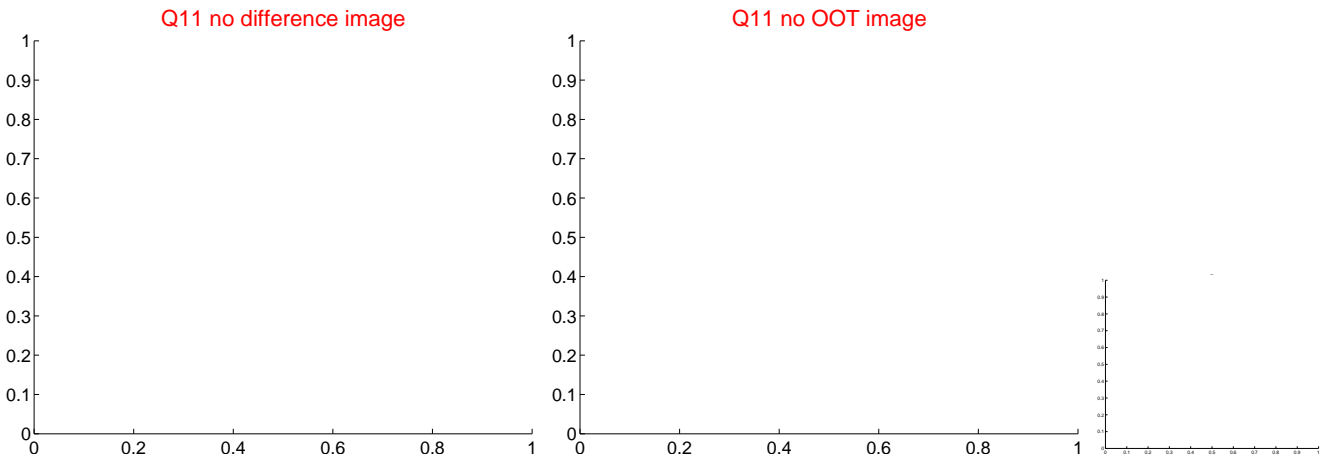
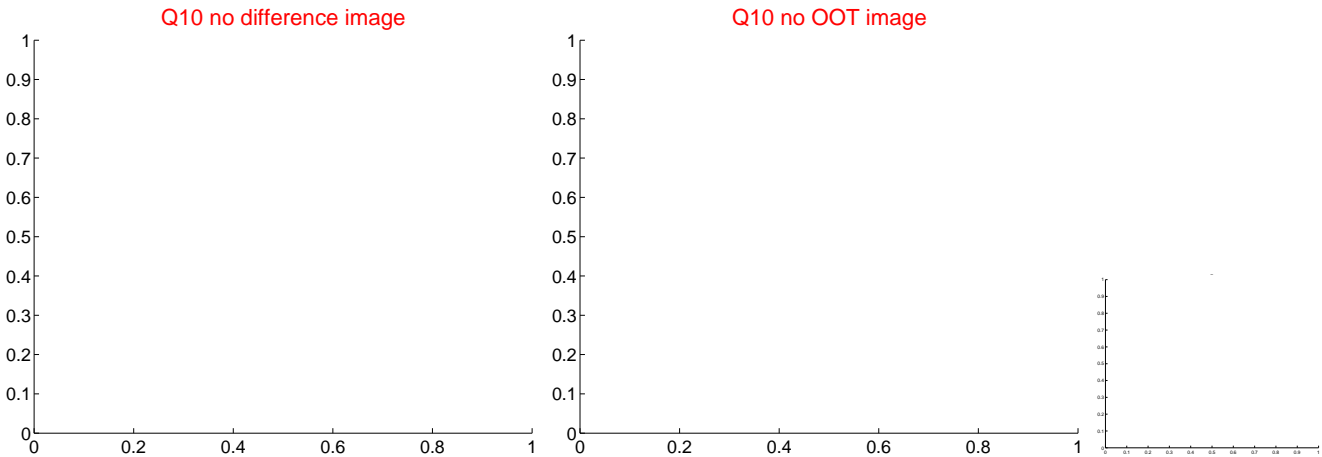
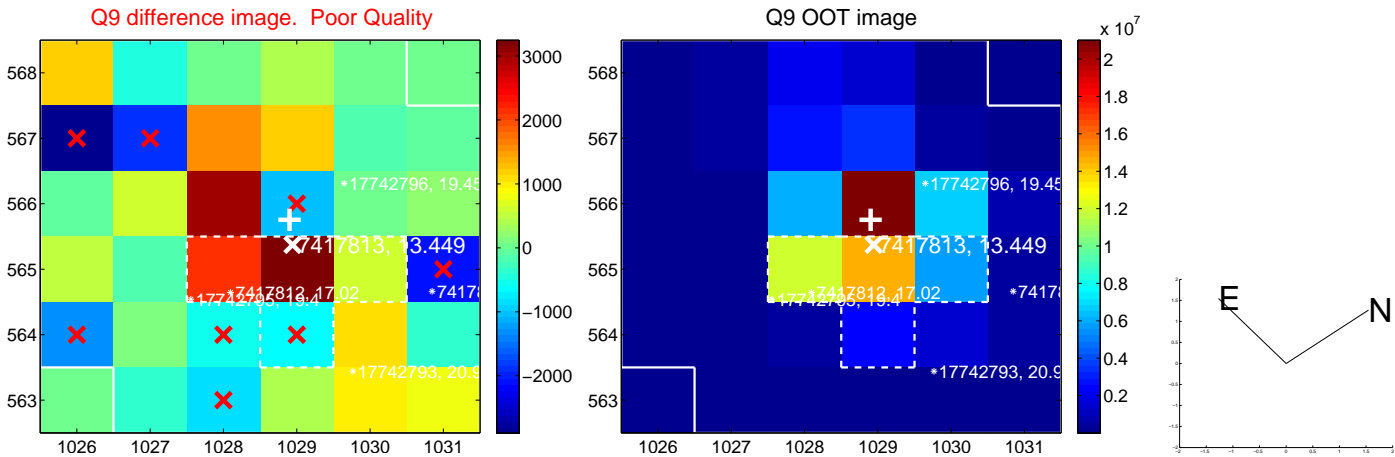
Q4 no OOT image



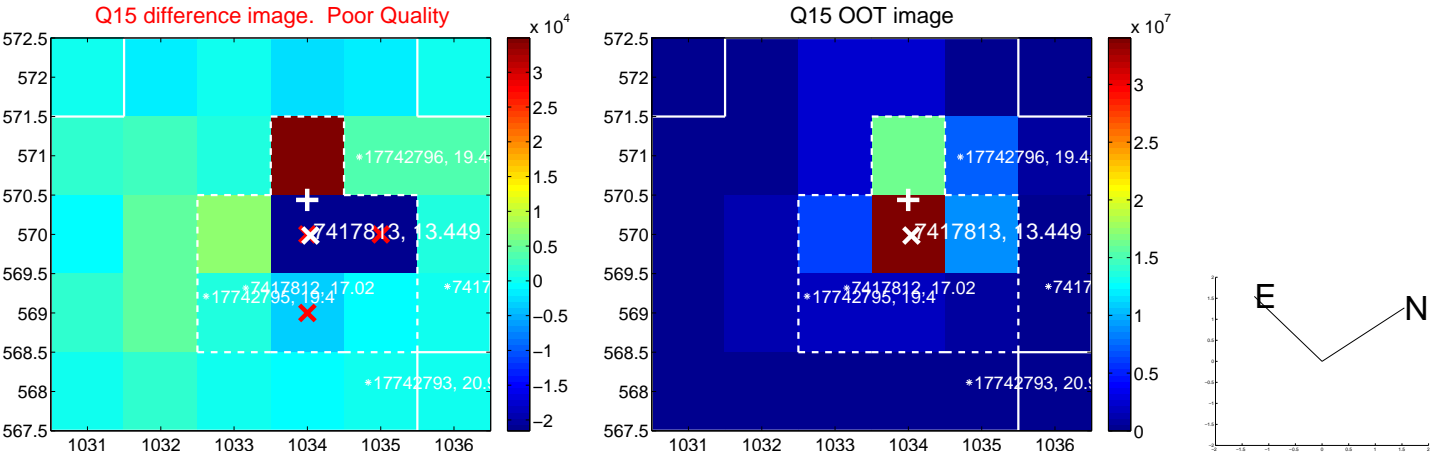
white \times : KIC target position; $+$: OOT centroid; \triangle : difference centroid. red \times : large negative pixel value.



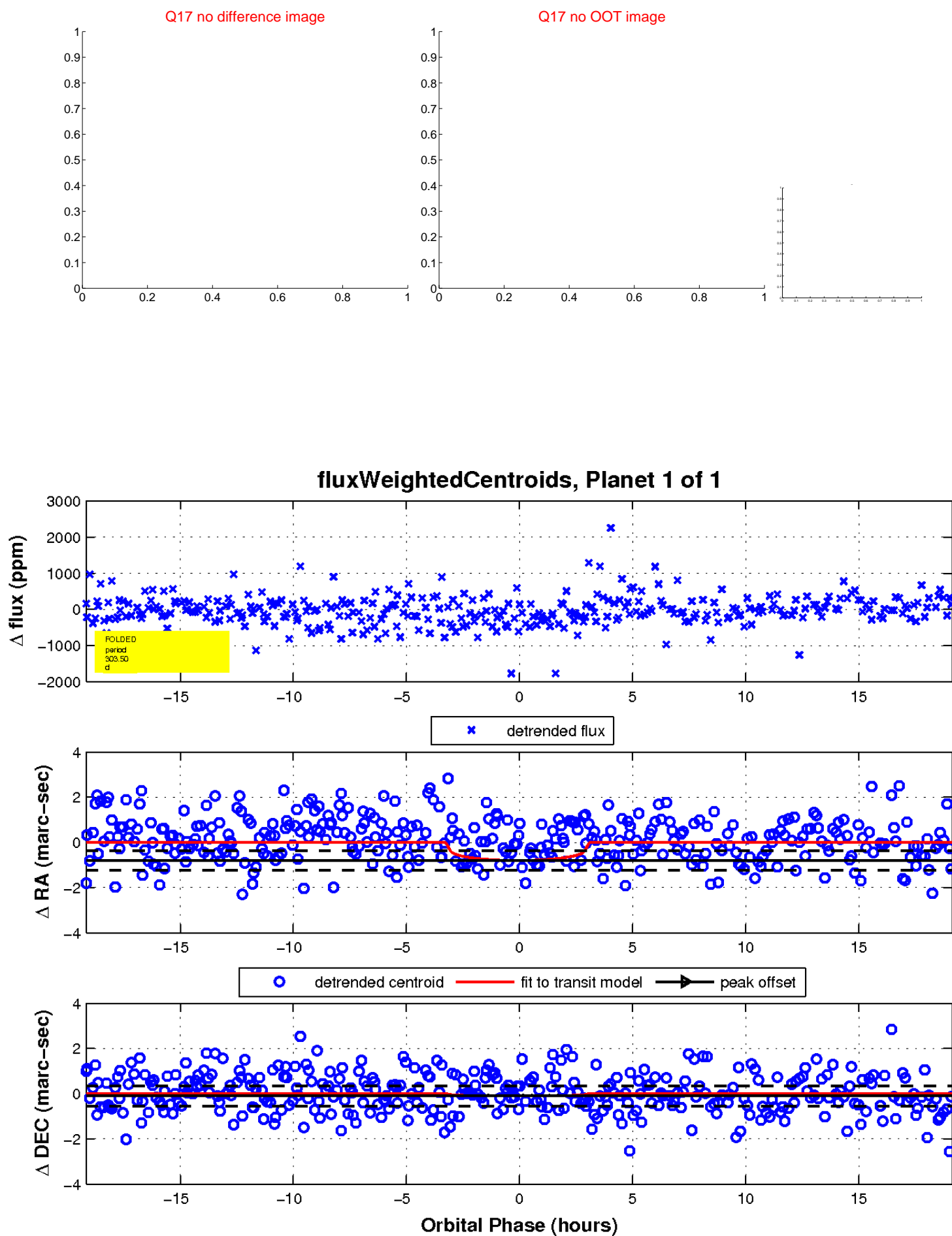
white \times : KIC target position; $+$: OOT centroid; \triangle : difference centroid. red \times : large negative pixel value.



white ×: KIC target position; +: OOT centroid; △: difference centroid. red ✕: large negative pixel value.



white \times : KIC target position; $+$: OOT centroid; \triangle : difference centroid. red \times : large negative pixel value.



UKIRT Image

