

# KIC 007303253

## Q1-17 DR25 TCE Parameters

TCE	Run Type	KOI?	Period (Days)	Epoch (BKJD)	Depth (ppm)	Duration (Hours)	MES	SNR	$R_{\star}$ ( $R_{\odot}$ )	$T_{\star}$ (K)	$R_p$ ( $R_{\oplus}$ )	$S_p$ ( $S_{\oplus}$ )
007303253-01	OBS	0878.01	23.589140	150.231372	1191.2	5.069	45.1	48.7	0.72	4919	3.15	13.37

## Robovetter Results

TCE	Run Type	Disp	Score	N	S	C	E	Comments
007303253-01	OBS	PC	1.00	0	0	0	0	NO_COMMENT

**Notes:** OBS = Observed. INJ = Injected. INV = Inverted. SCR = Scrambled.

N = Not Transit-Like. S = Stellar Eclipse. C = Centroid Offset. E = Ephemeris Match.

See [http://exoplanetarchive.ipac.caltech.edu/docs/API\\_kepcandidate\\_columns.html#proj\\_disp\\_col](http://exoplanetarchive.ipac.caltech.edu/docs/API_kepcandidate_columns.html#proj_disp_col) for comment definitions.

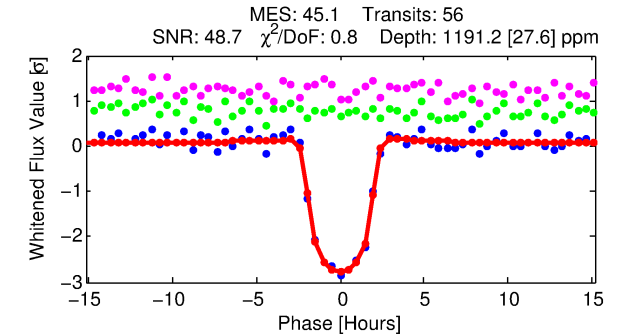
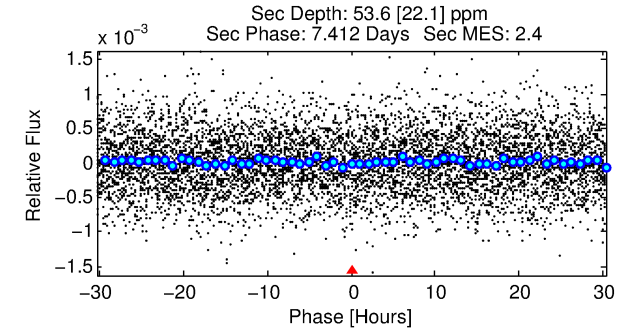
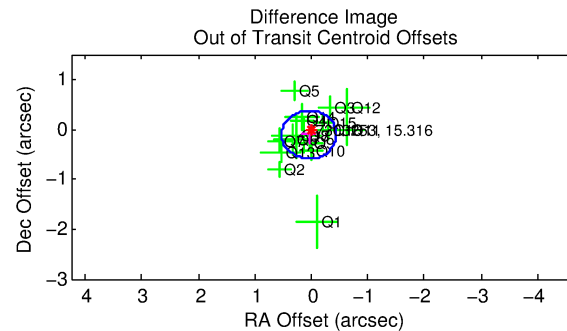
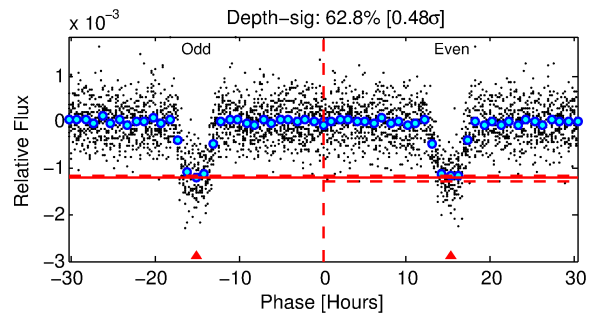
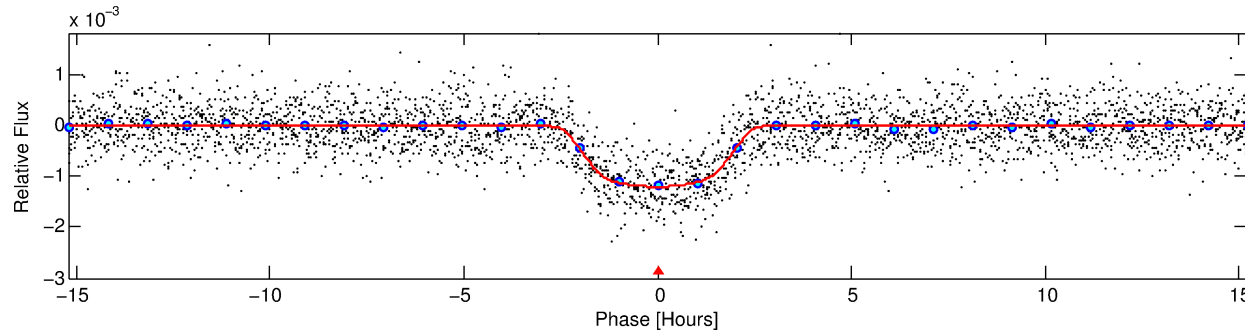
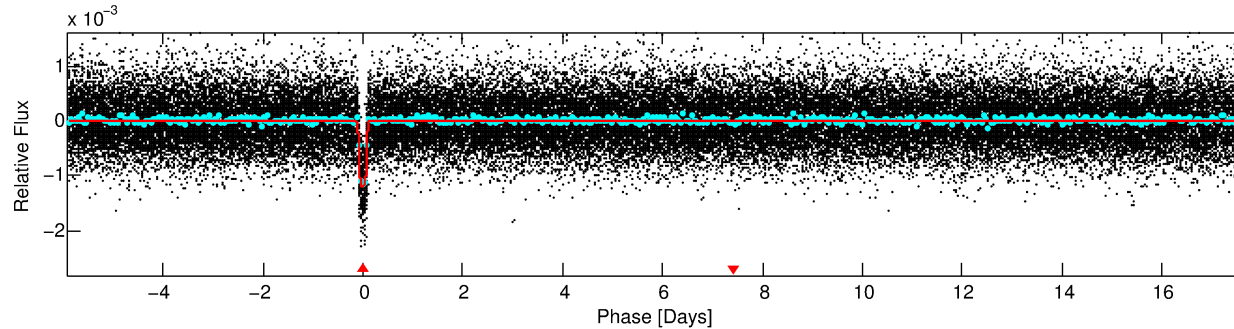
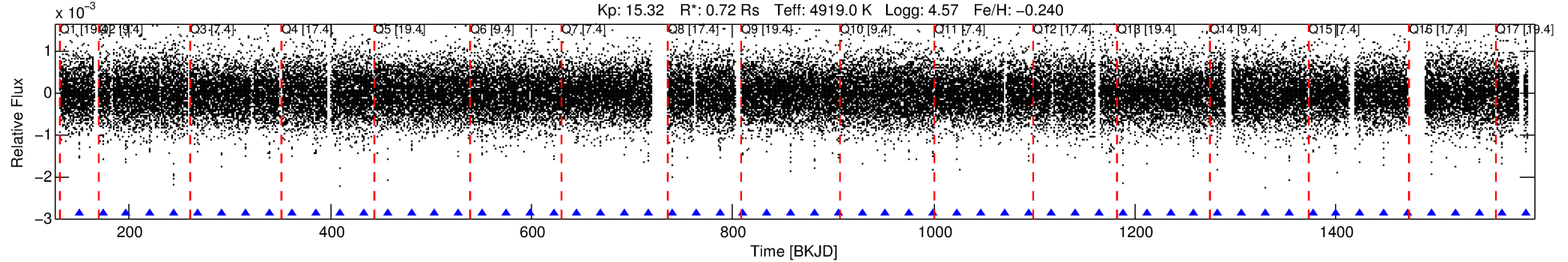
## Ephemeris Match Information For 007303253-01

No Significant Match Found

# DV One-Page Summary

KIC: 7303253 Candidate: 1 of 1 Period: 23.589 d  
KOI: K00878.01 Corr: 0.969

Kp: 15.32 R\*: 0.72 Rs Teff: 4919.0 K Logg: 4.57 Fe/H: -0.240



## DV Fit Results:

Period = 23.58914 [0.00007] d  
Epoch = 150.2314 [0.0023] BKJD  
Rp/R\* = 0.0400 [0.0010]  
a/R\* = 16.81 [1.25]  
b = 0.93 [0.01]  
Seff = 13.37 [2.36]  
Teff = 488 [22] K  
Rp = 3.15 [0.34] Re  
a = 0.1428 [0.0127] AU  
Ag = 60.67 [26.38] [2.26σ]  
Teffp = 2104 [227] K [7.09σ]

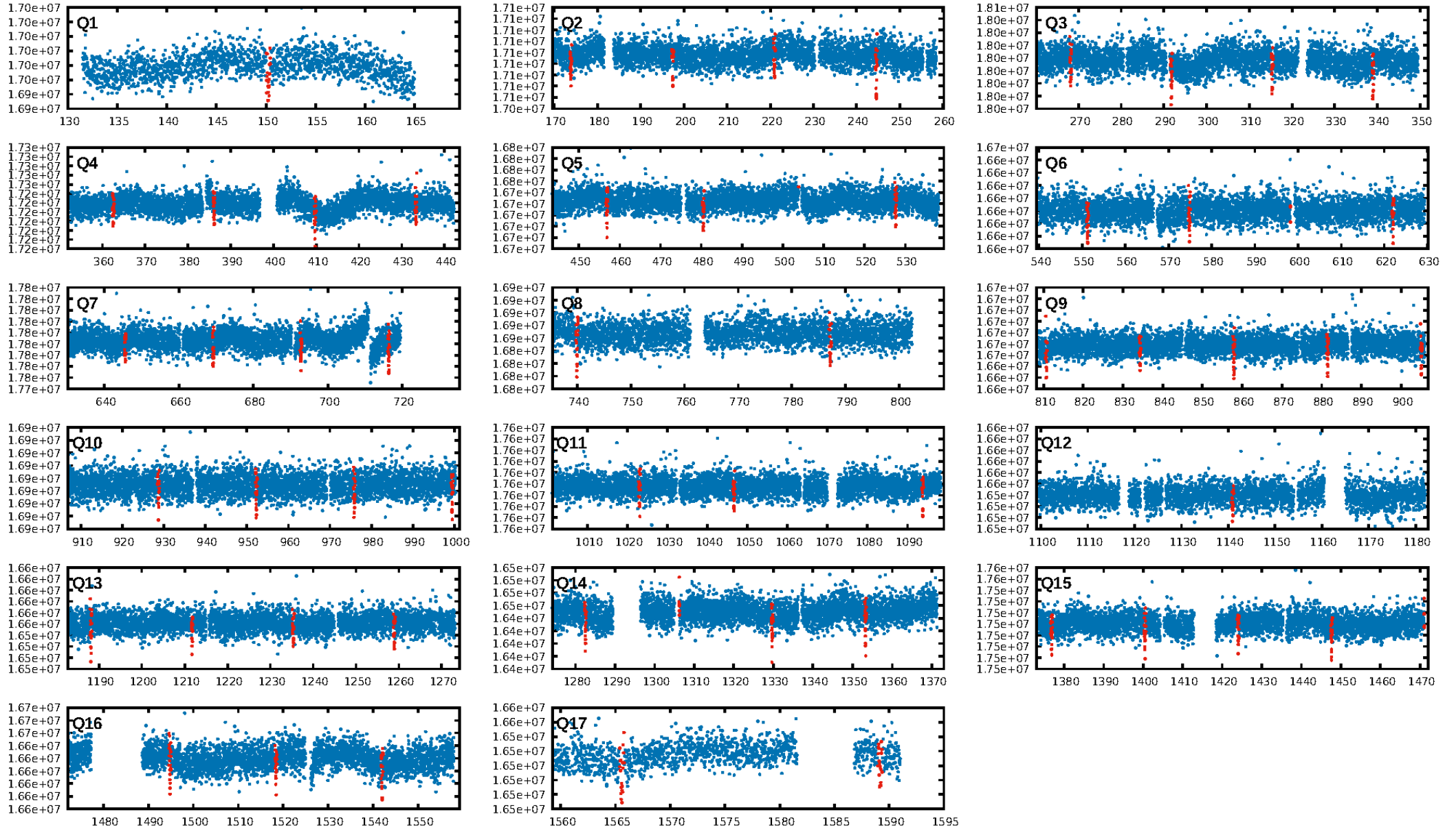
## DV Diagnostic Results:

ShortPeriod-sig: N/A  
LongPeriod-sig: N/A  
ModelChiSquare2-sig: 99.8%  
ModelChiSquareGof-sig: 100.0%  
Bootstrap-pfa: 0.00e+00  
RollingBand-fgt: 1.00 [53/53]  
GhostDiagnostic-chr: 6.877  
Centroid-sig: 80.1%  
Centroid-so: 0.333 arcsec [1.04σ]  
OotOffset-rm: 0.117 arcsec [0.73σ]  
OotOffset-st: 4/4/4/5 [17]  
KicOffset-rm: 0.482 arcsec [3.50σ]  
KicOffset-st: 4/4/4/5 [17]  
DiffImageQuality-fgm: 1.00 [17/17]  
DiffImageOverlap-fno: 1.00 [17/17]

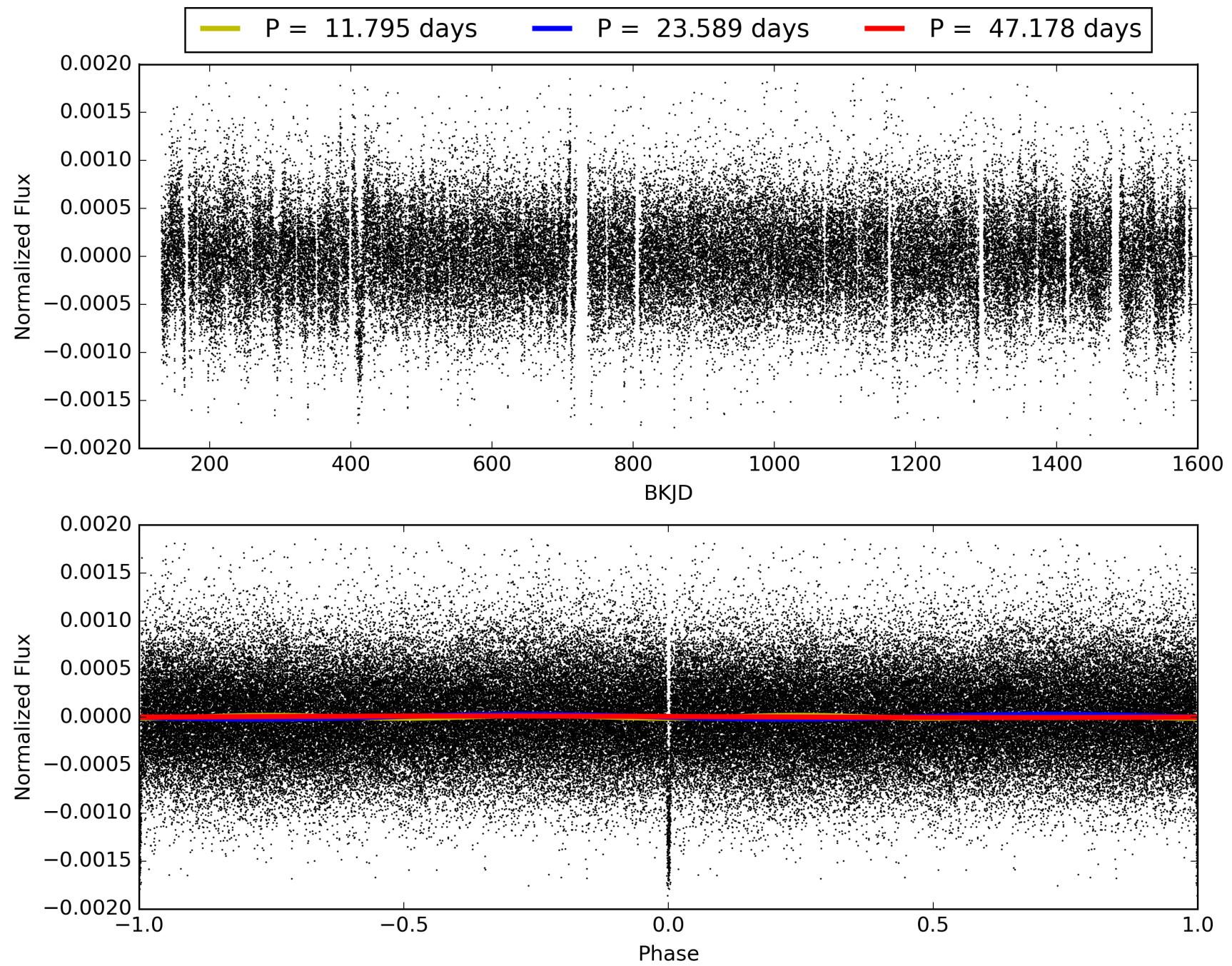
Software Revision: svn+ssh://murzim/repo/soc/tags/release/9.3.42@60958 -- Date Generated: 30-Jan-2016 21:13:11 Z

This Data Validation Report Summary was produced in the Kepler Science Operations Center Pipeline at NASA Ames Research Center

# TCE 007303253-01, PDC Light Curves

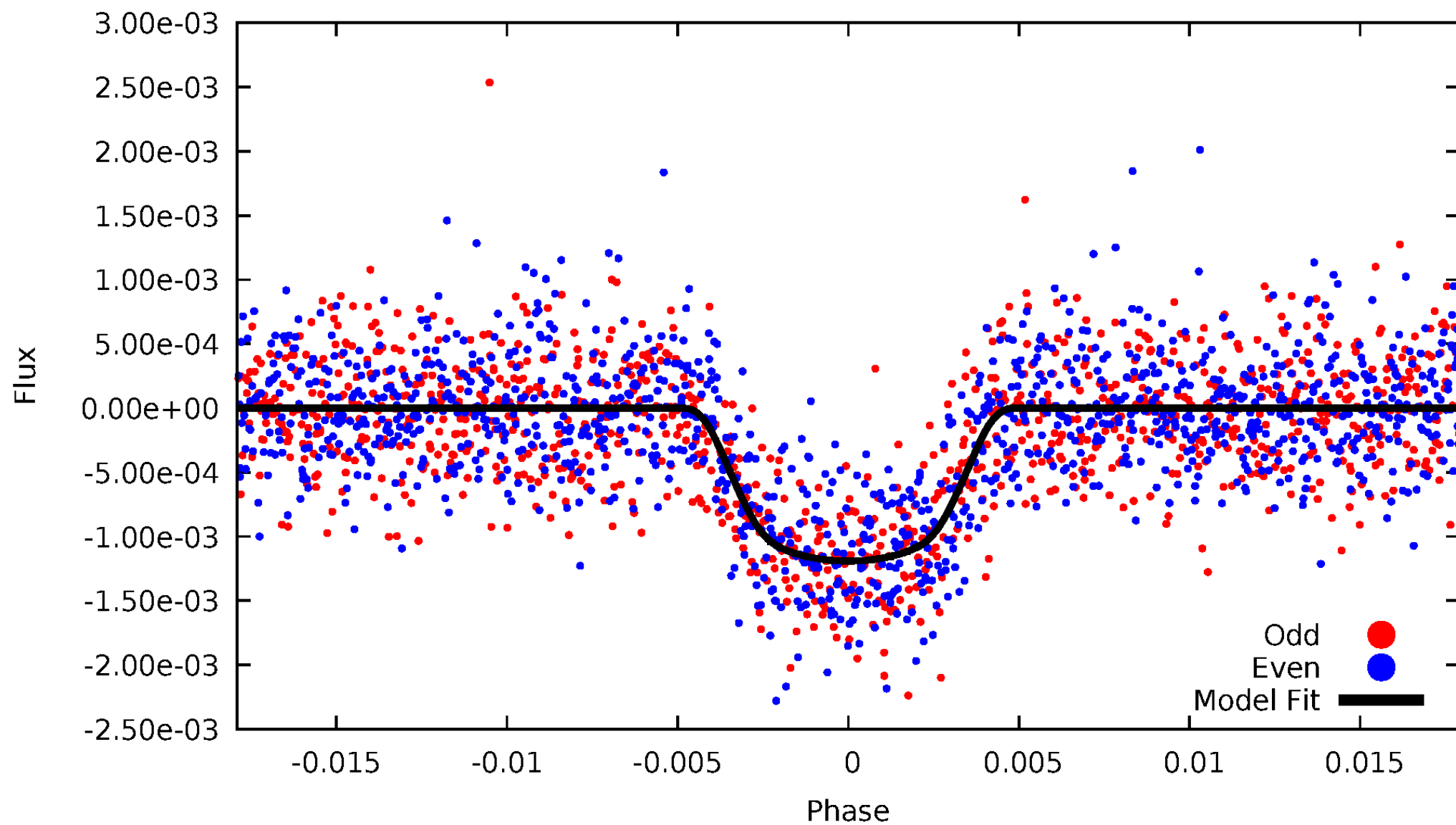


TCE 007303253-01



# DV Odd/Even

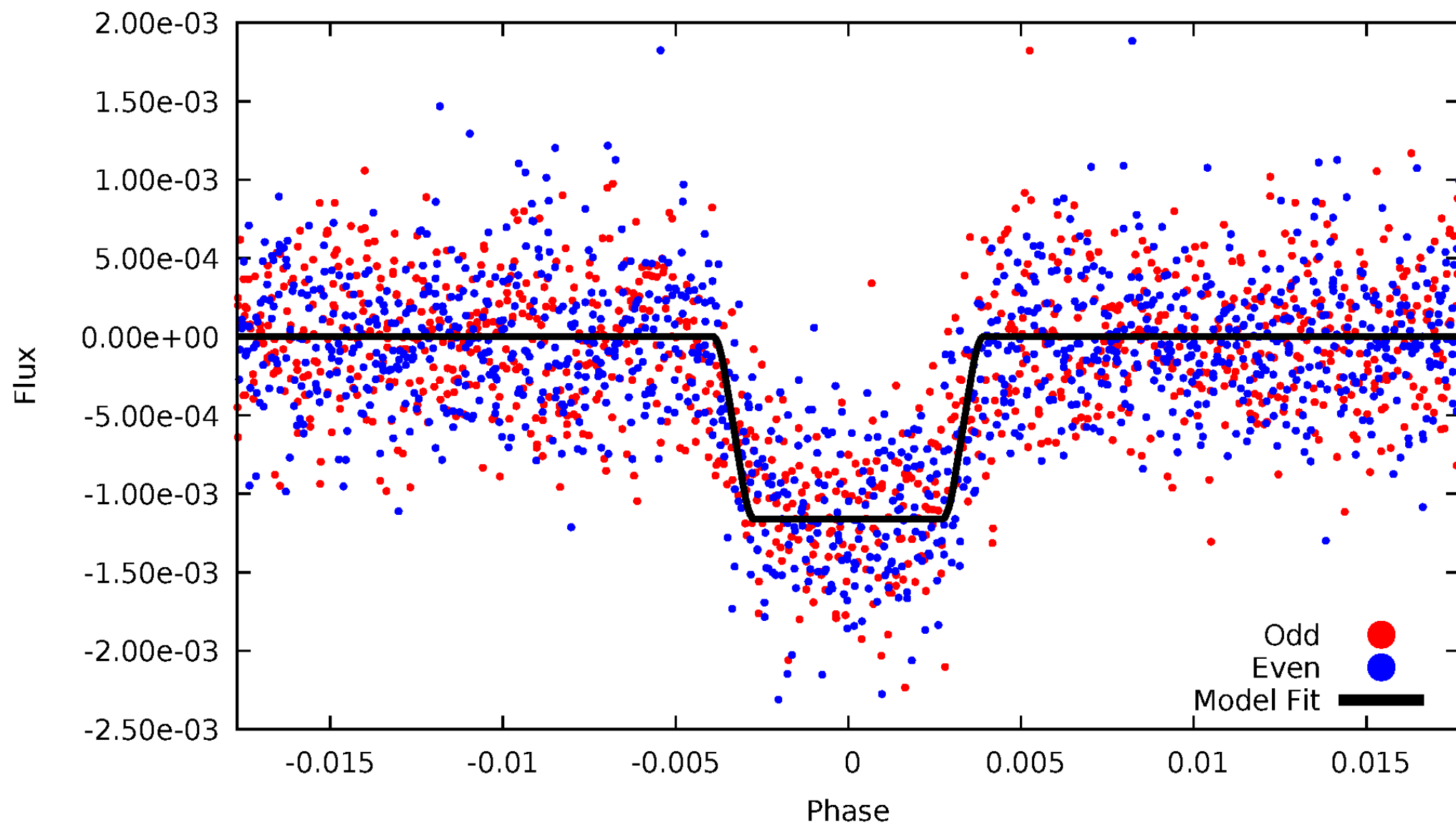
TCE 007303253-01





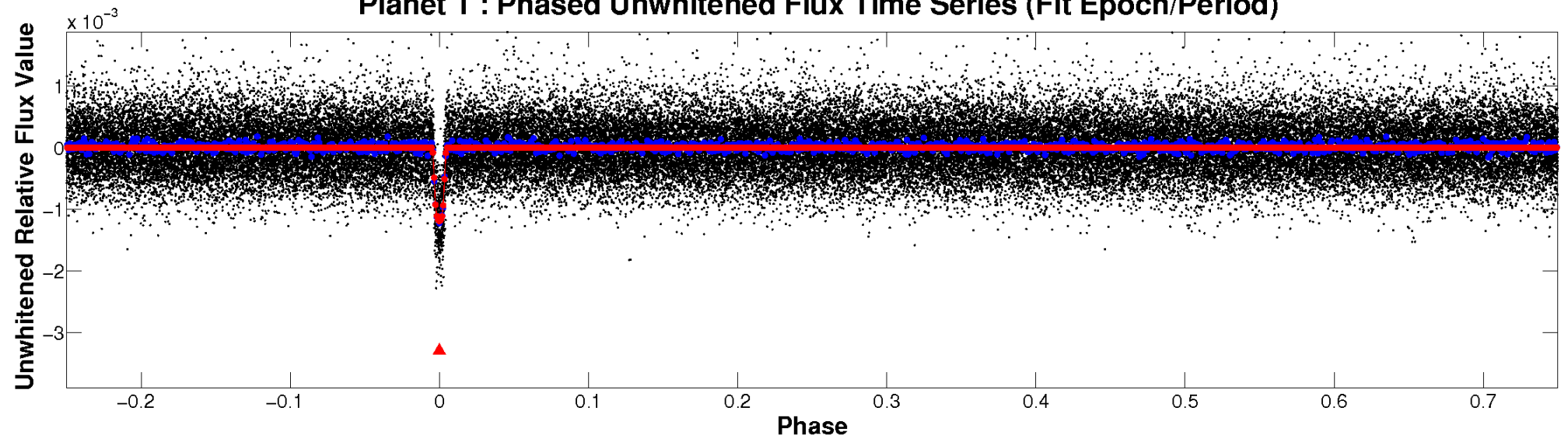
# ALT Odd/Even

TCE 007303253-01

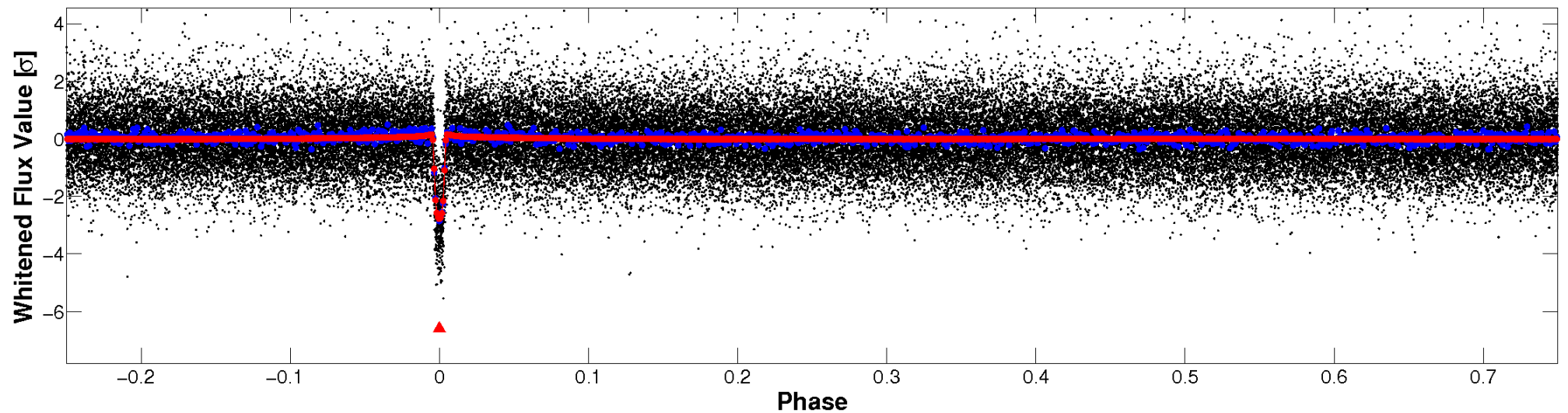


# Non-Whitened Vs. Whitened Light Curve

**Planet 1 : Phased Unwhitened Flux Time Series (Fit Epoch/Period)**

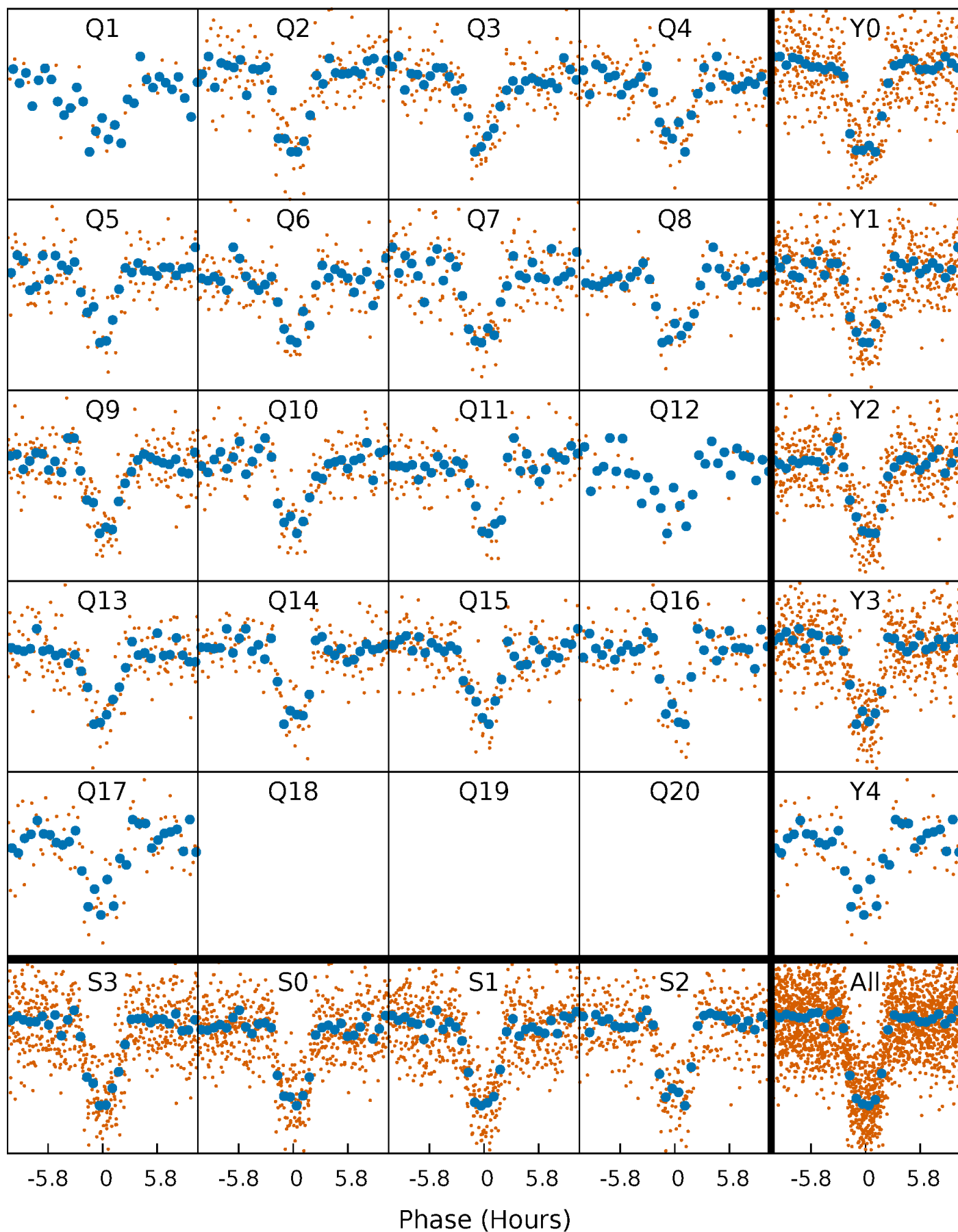


**Planet 1 : Phased Whitened Flux Time Series (Fit Epoch/Period)**



# PDC Quarter-Phased Transit Curves

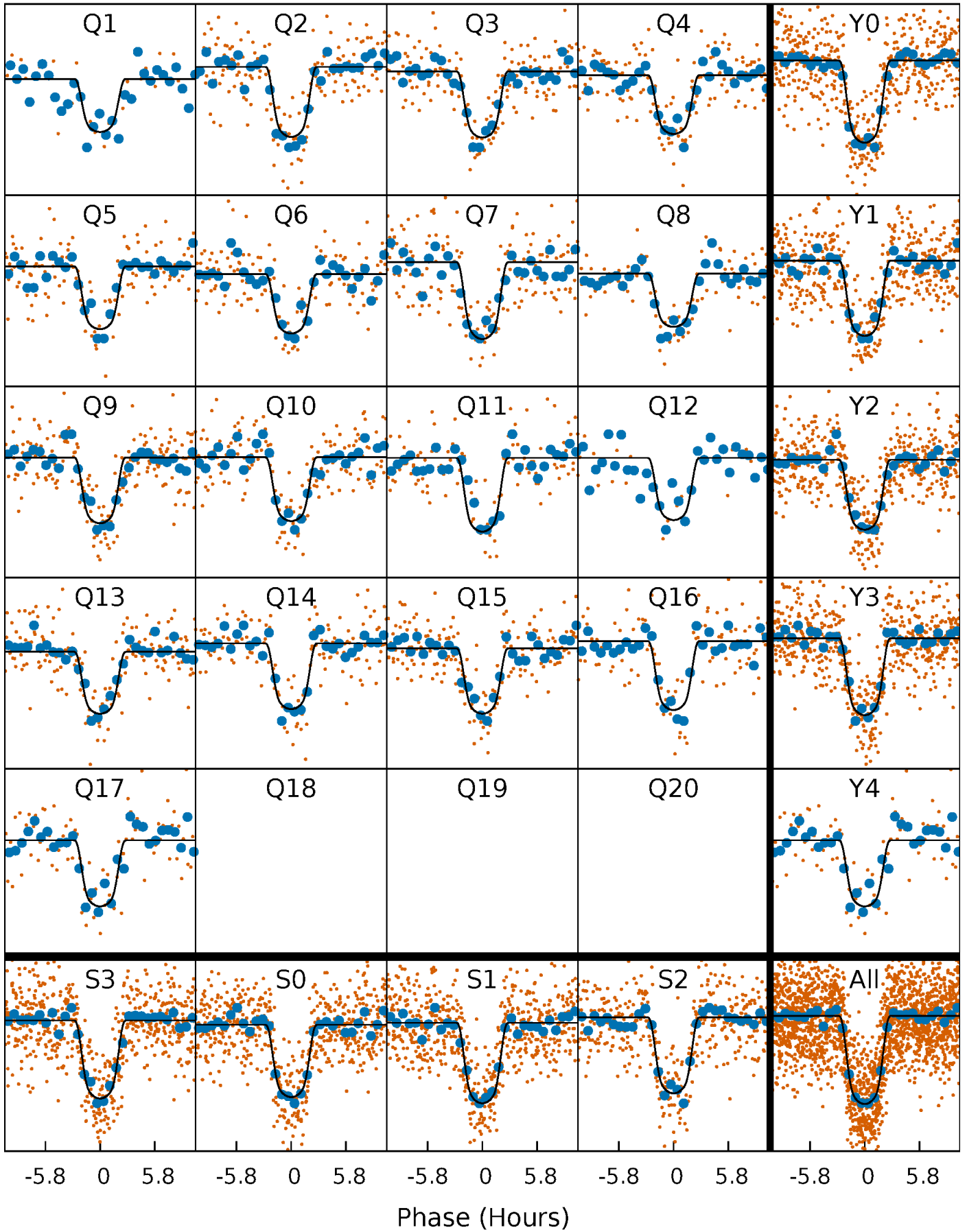
TCE 007303253-01 P= 23.589140 Days  $T_0=150.231372$  (BKJD)





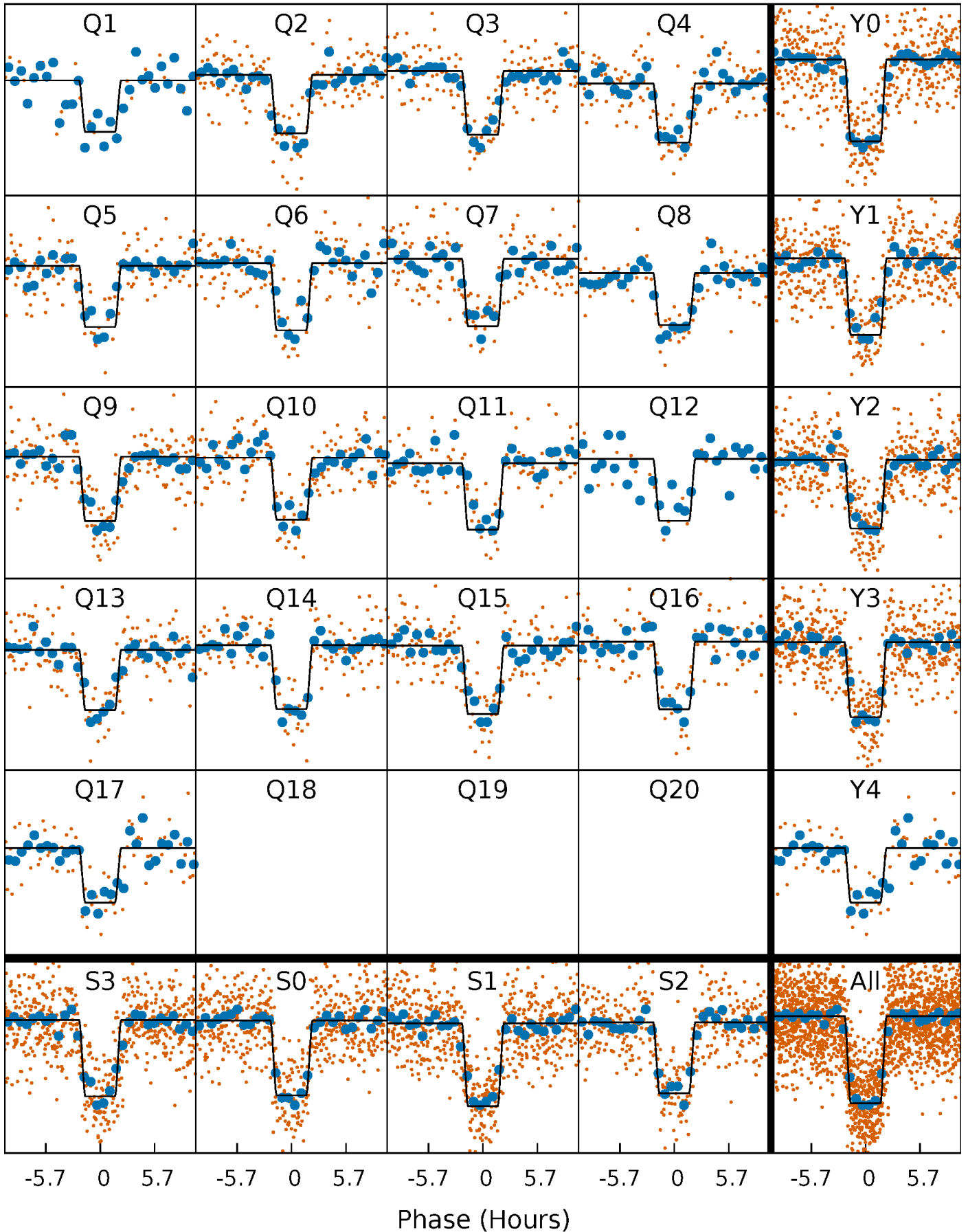
# DV Quarter-Phased Transit Curves

TCE 007303253-01 P= 23.589140 Days  $T_0=150.231372$  (BKJD)



# Alt. Detrend Quarter-Phased Transit Curves

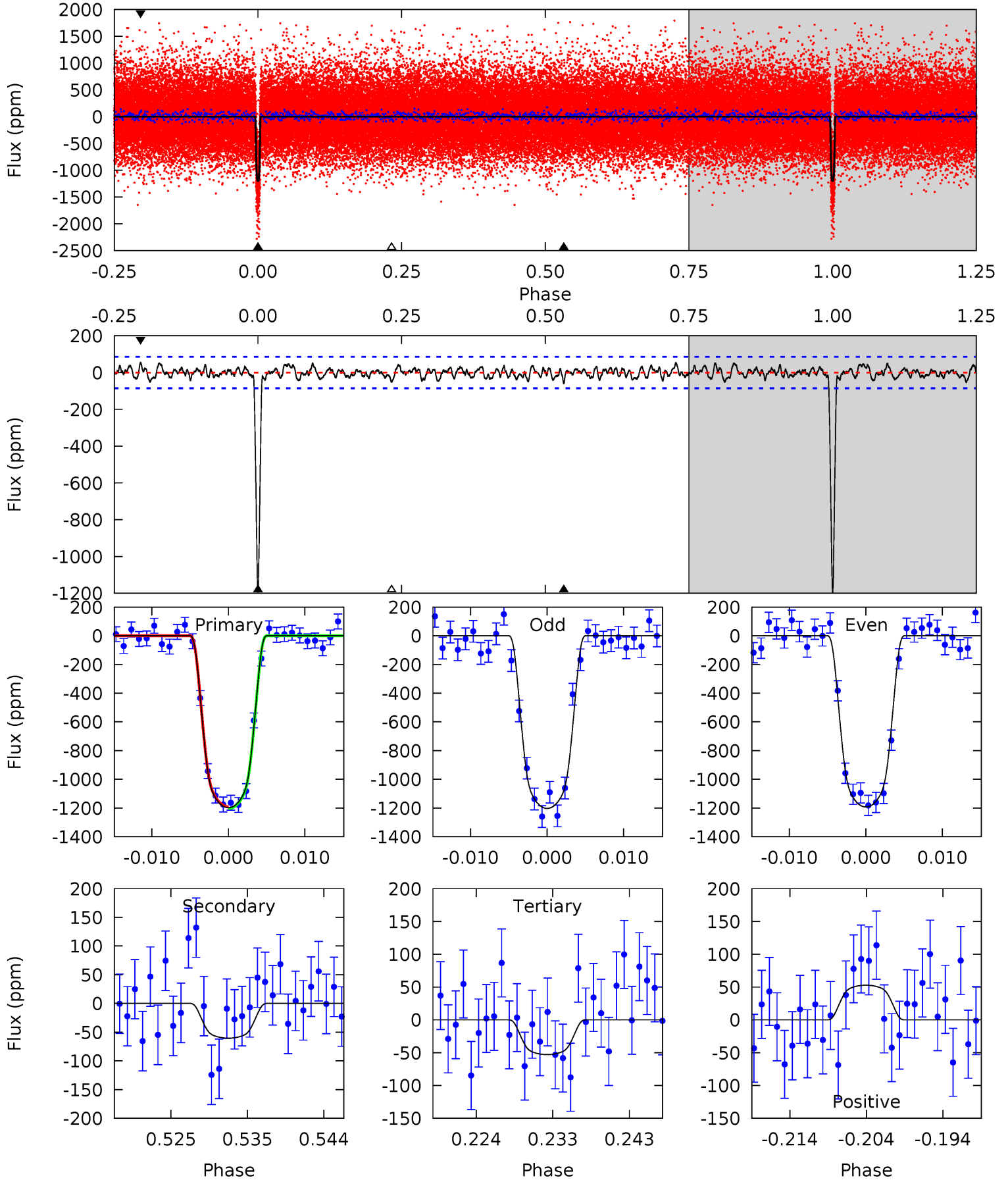
TCE 007303253-01 P= 23.589021 Days  $T_0=150.235317$  (BKJD)



# DV Model-Shift Uniqueness Test

007303253-01, P = 23.589140 Days, E = 126.642232 Days

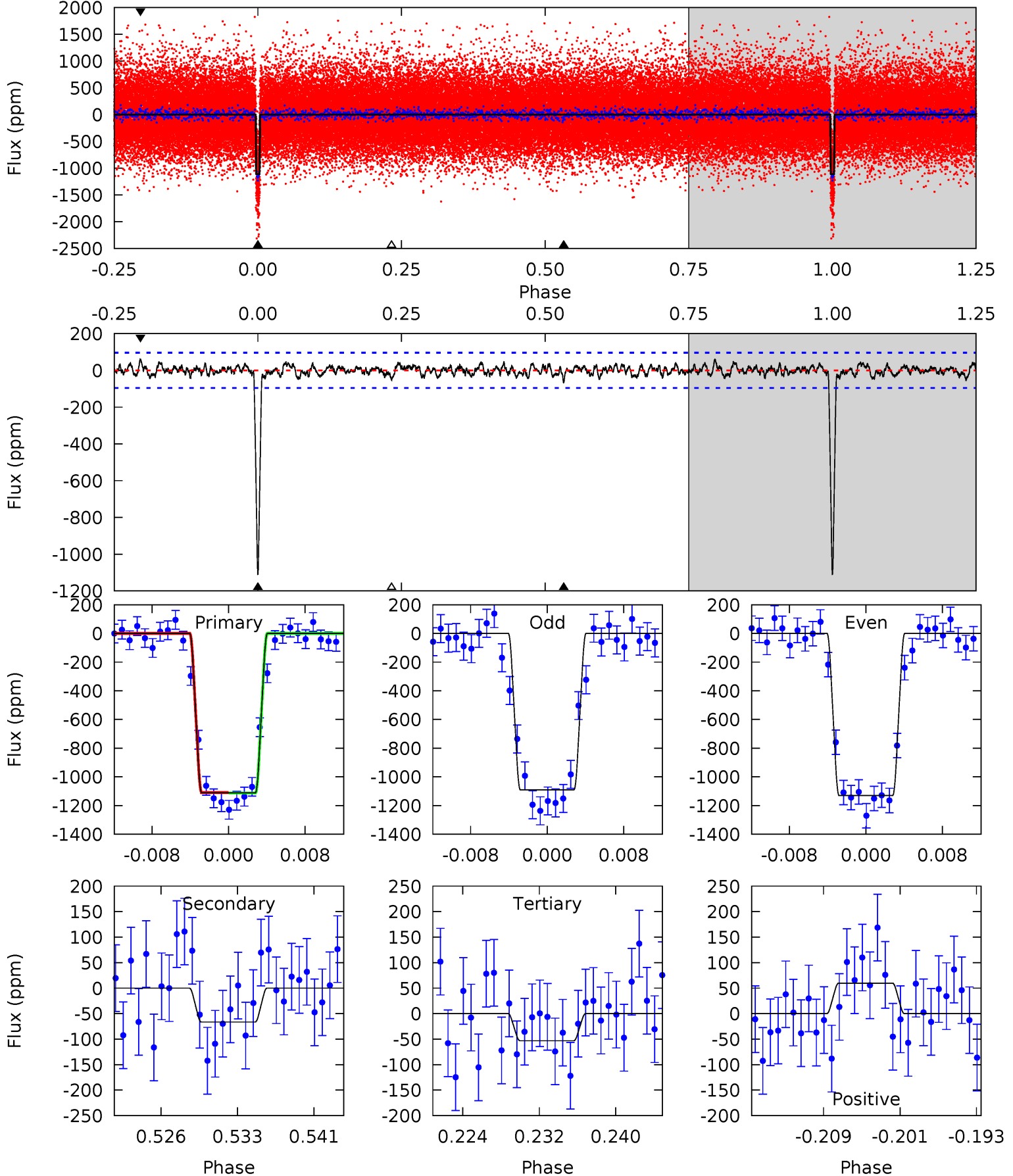
Pri	Sec	Ter	Pos	FA <sub>1</sub>	FA <sub>2</sub>	F <sub>Red</sub>	Pri-Ter	Pri-Pos	Sec-Ter	Sec-Pos	Odd-Evn	DMM	Shape	TAT
70.6	3.56	3.12	3.11	5.03	2.59	1.22	67.5	67.5	0.44	0.45	0.29	0.99	0.04	0.35



# Alt Model-Shift Uniqueness Test

007303253-01,  $P = 23.589021$  Days,  $E = 126.646296$  Days

Pri	Sec	Ter	Pos	FA <sub>1</sub>	FA <sub>2</sub>	F <sub>Red</sub>	Pri-Ter	Pri-Pos	Sec-Ter	Sec-Pos	Odd-Evn	DMM	Shape	TAT
58.8	3.51	2.82	3.17	5.08	2.66	1.03	55.9	55.6	0.70	0.35	1.05	1.01	0.05	0.10



### Stellar Parameters For KIC 007303253

	$T_{\text{eff}}(K)$	$\log(g)$	[Fe/H]	$R (R_{\odot})$	$M(M_{\odot})$	$p_{\star} (\text{g}\cdot\text{cm}^{-3})$
	$4919^{+146}_{-146}$	$4.566^{+0.072}_{-0.048}$	$-0.240^{+0.300}_{-0.300}$	$0.721^{+0.069}_{-0.075}$	$0.697^{+0.090}_{-0.053}$	$2.622^{+0.831}_{-0.440}$
	+3%/-3%	+2%/-1%	+125%/-125%	+10%/-10%	+13%/-8%	+32%/-17%
Source	PHO1	KIC0	KIC0	DSEP		

KIC = Kepler Input Catalog; PHO = Photometry; SPE = Spectroscopy; AST = Asteroseismology  
 TRA = Transits; DESP = Dartmouth Models; MULT = Multiple Models

### Secondary Eclipse Parameters for KIC 007303253-01 / KOI 0878.01

Detrend	Depth (ppm)	$R_p (R_{\oplus})$	$T_{\text{max}} (K)$	$T_{\text{obs}} (K)$	$A_{\text{obs}}$
DV	$-60 \pm 17$	$3.13^{+0.20}_{-0.20}$	$677^{+25}_{-24}$	$2853^{+111}_{-130}$	$71^{+21}_{-21}$
Alt.	$-66 \pm 19$	$2.68^{+0.19}_{-0.18}$	$679^{+27}_{-26}$	$3014^{+121}_{-149}$	$105^{+30}_{-31}$

$T_{\text{max}}$  = Theoretical Maximum Planetary Temperature

$T_{\text{obs}}$  = Observed Planetary Temperature (Assuming  $A=0.3$ )

$A_{\text{obs}}$  = Observed Albedo (Assuming  $T=0$ )

If a secondary eclipse is present, the system is likely an EB if  $T_{\text{obs}} \gg T_{\text{max}}$  AND  $A_{\text{obs}} \gg 1.0$



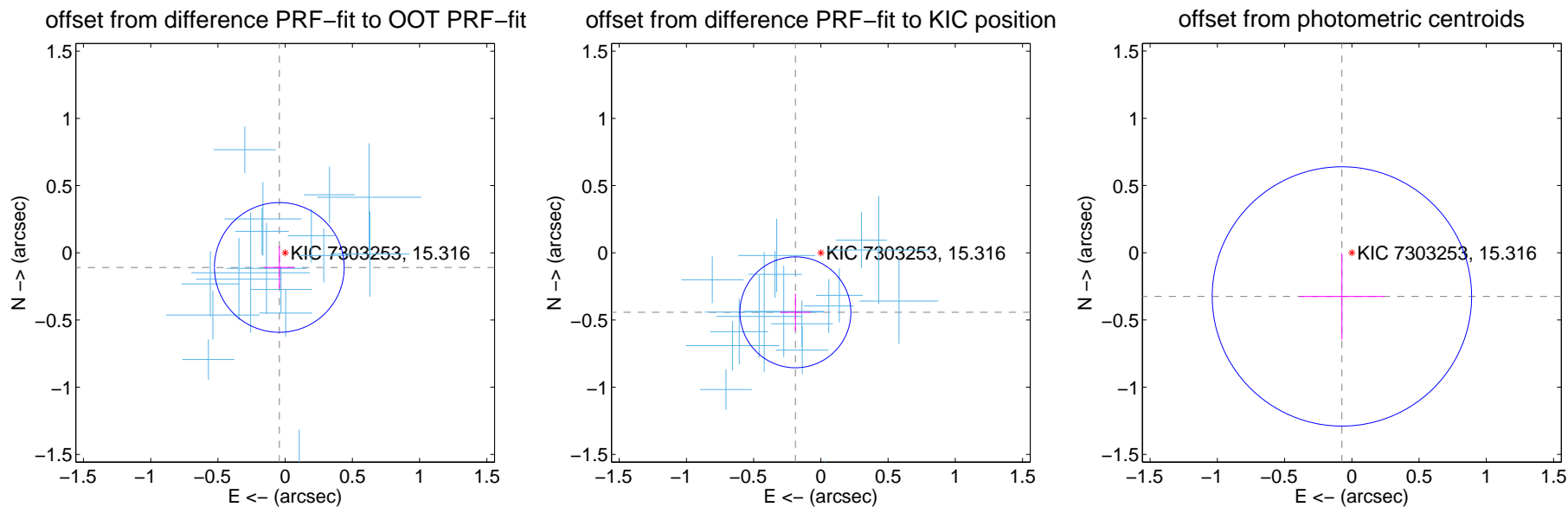
## DV Centroid Data

Supplemental centroid analysis for 007303253-01. Kepler magnitude: 15.32. Transit SNR 48.67

There are 17 quarters with good PRF difference image offsets

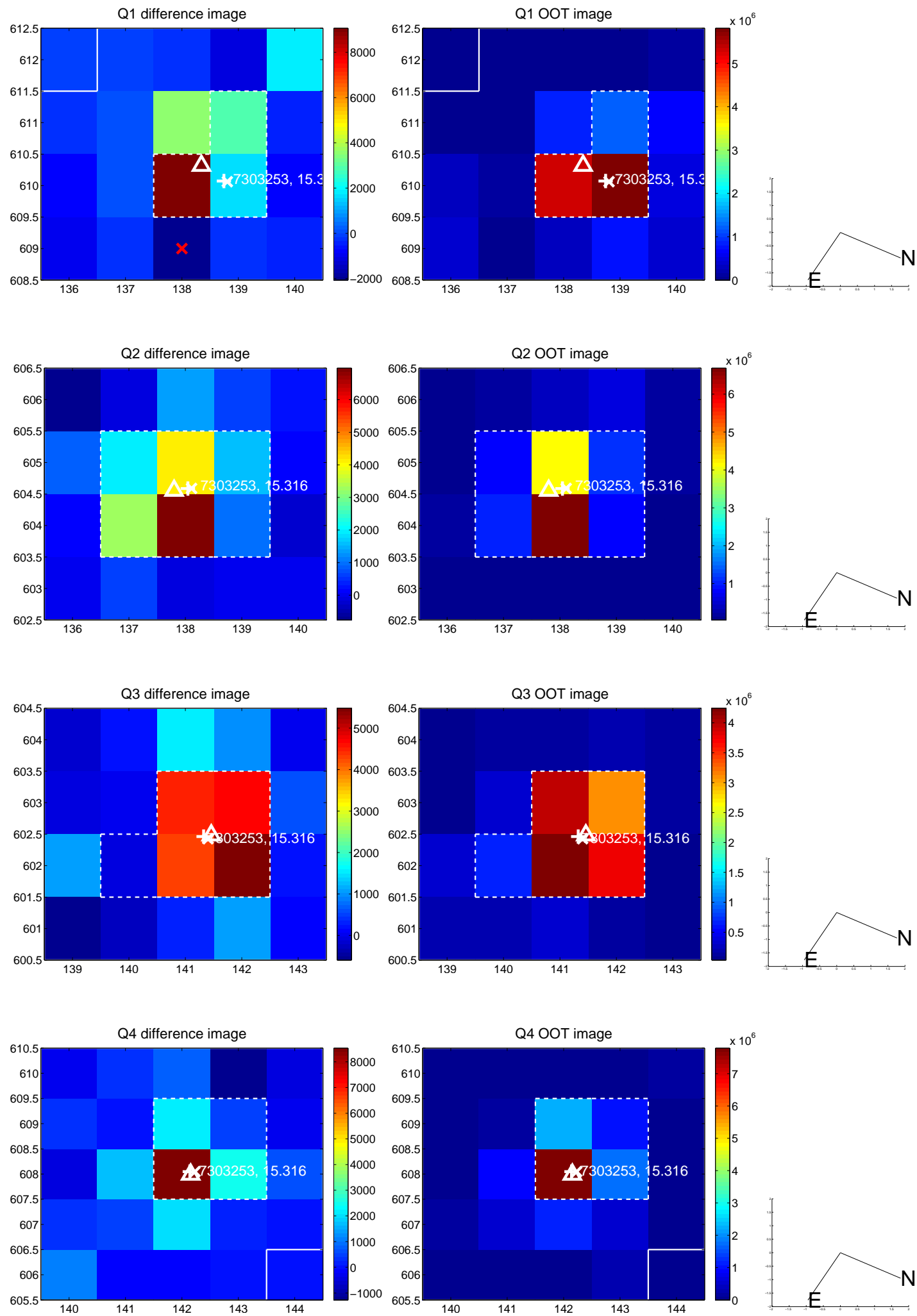
The direct PRF centroid is offset from the target star catalog position by about 0.34 arcsec

	Distance in arcsec	Distance / $\sigma$	$\Delta$ RA	$\Delta$ Dec
PRF-fit source offset from OOT	$0.117 \pm 0.161$	0.73	$0.043 \pm 0.113$	$-0.109 \pm 0.158$
PRF-fit source offset from KIC position	<b><math>0.482 \pm 0.138</math></b>	<b>3.50</b>	$0.189 \pm 0.113$	$-0.443 \pm 0.138$
photometric centroid source offset	$0.33 \pm 0.32$	1.04	$0.07 \pm 0.32$	$-0.33 \pm 0.32$

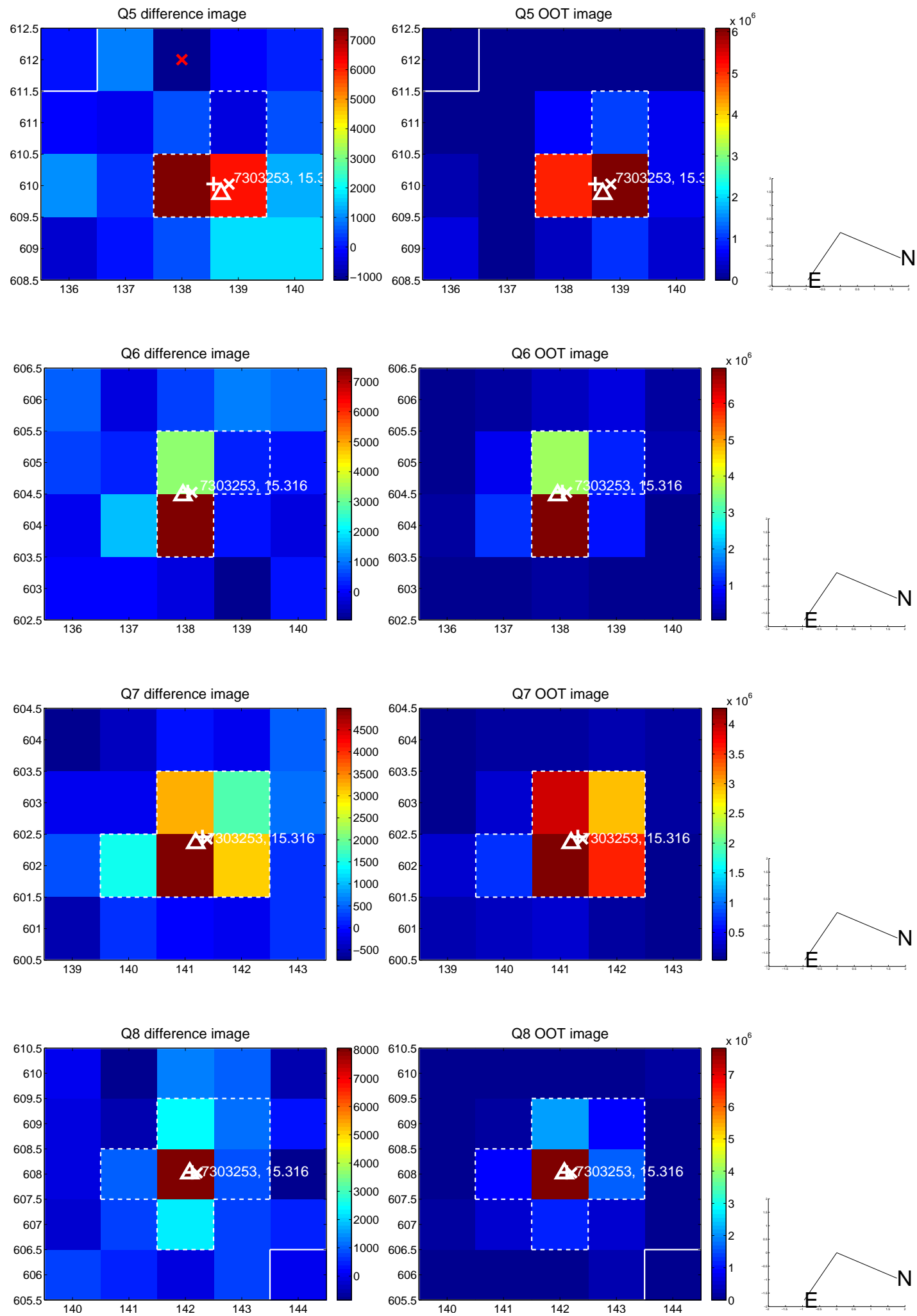


Centroid source offsets from the target star reconstructed from PRF and photometric centroids. **Sky blue crosses:** good quarterly centroid offsets; **Vermillion crosses:** bad quarterly centroid offsets; magenta cross: average over quarters. Length of the crosses: one- $\sigma$  uncertainty. Blue circle: three- $\sigma$ . Red \*: target star. Blue \*: Other stars. Text next to a star gives its KIC ID and kepmag. KIC IDs > 15,000,000 are from the UKIRT catalog.

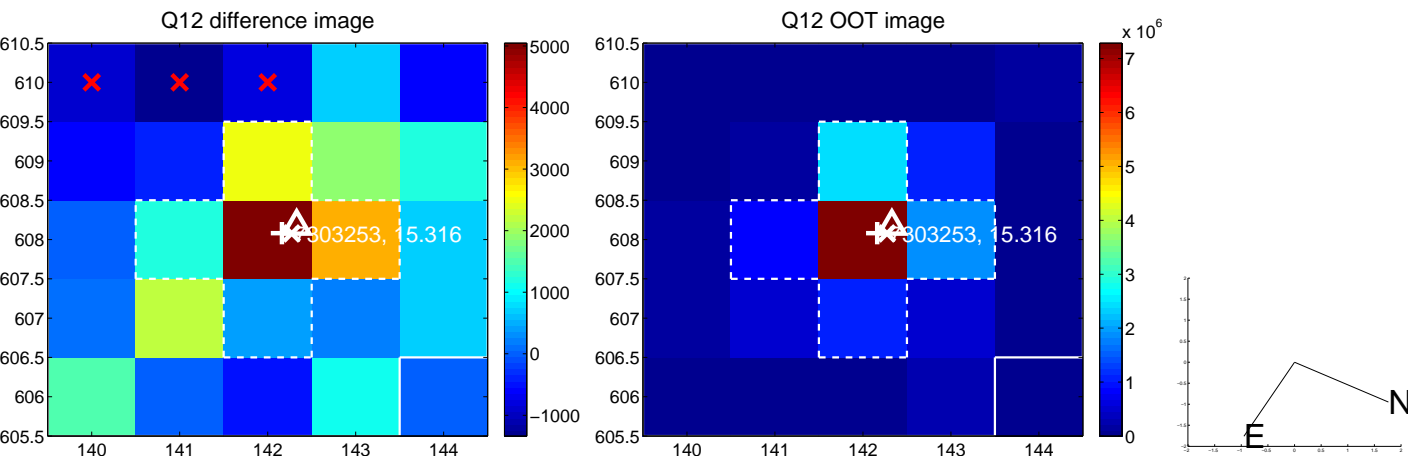
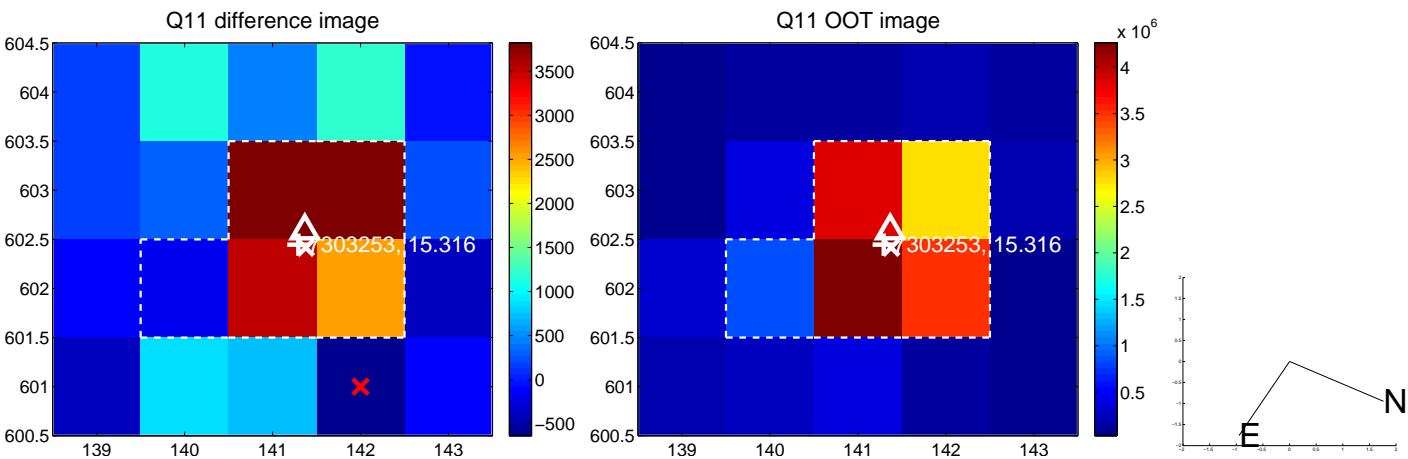
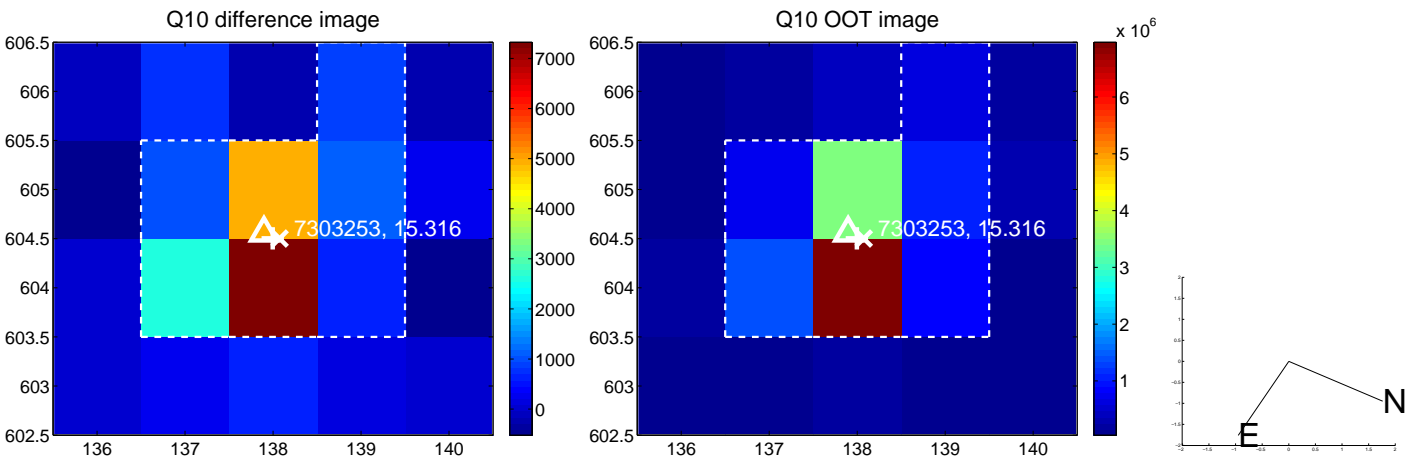
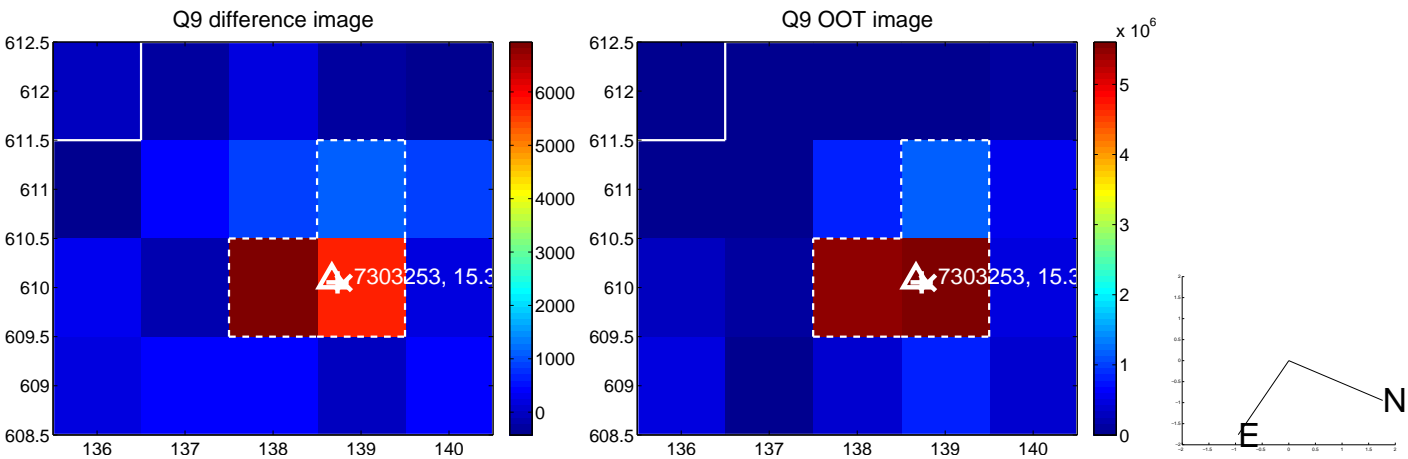
white  $\times$ : KIC target position; +: OOT centroid;  $\triangle$ : difference centroid. red  $\times$ : large negative pixel value.



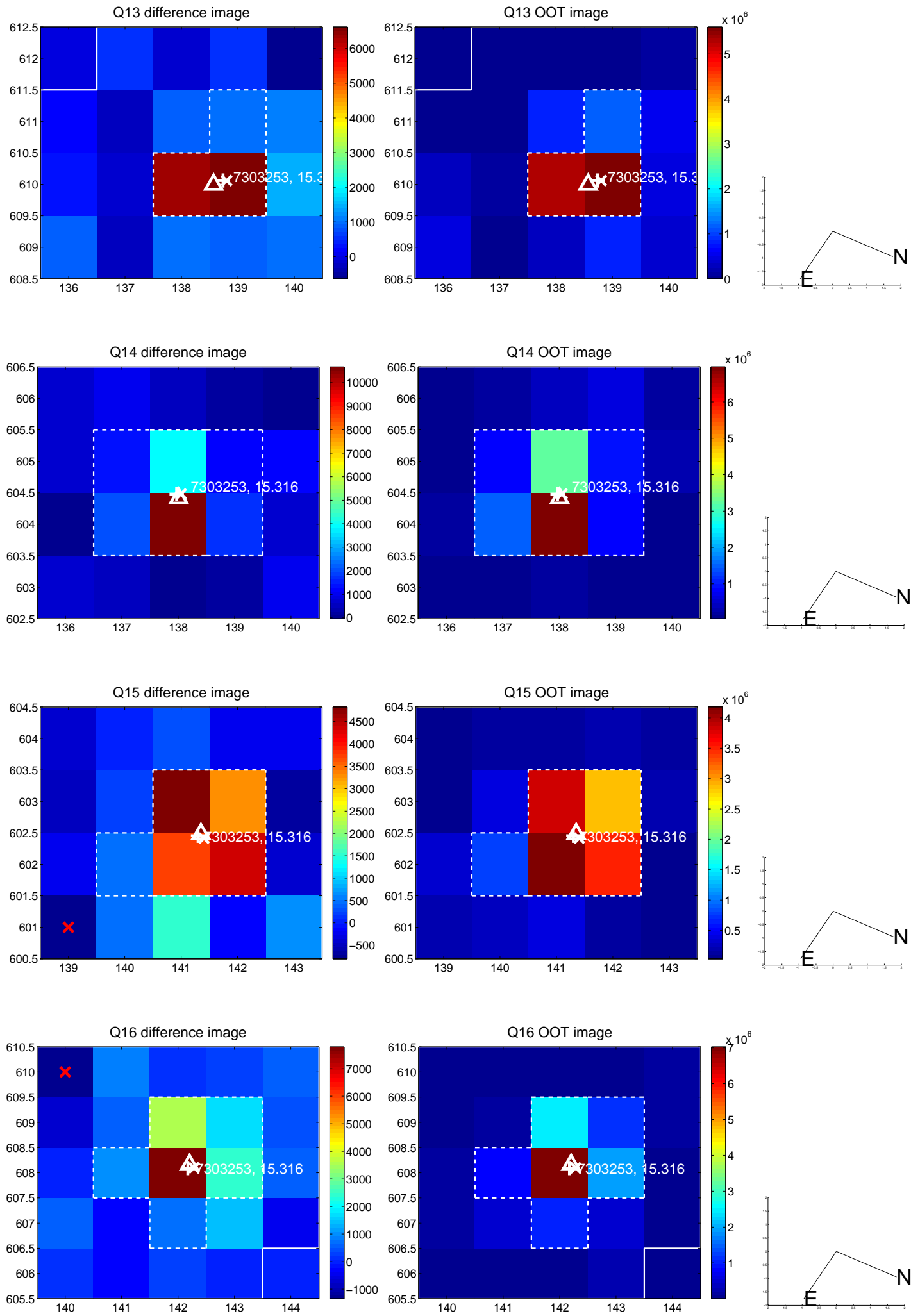
white  $\times$ : KIC target position; +: OOT centroid;  $\triangle$ : difference centroid. red  $\times$ : large negative pixel value.



white  $\times$ : KIC target position; +: OOT centroid;  $\triangle$ : difference centroid. red  $\times$ : large negative pixel value.

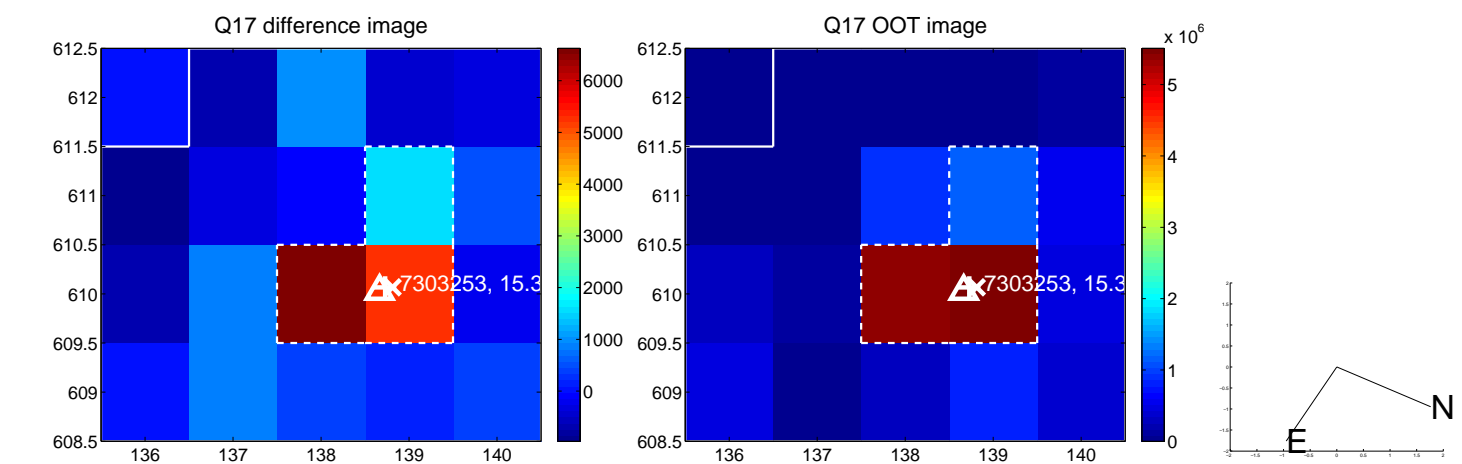


white  $\times$ : KIC target position; +: OOT centroid;  $\triangle$ : difference centroid. red  $\times$ : large negative pixel value.

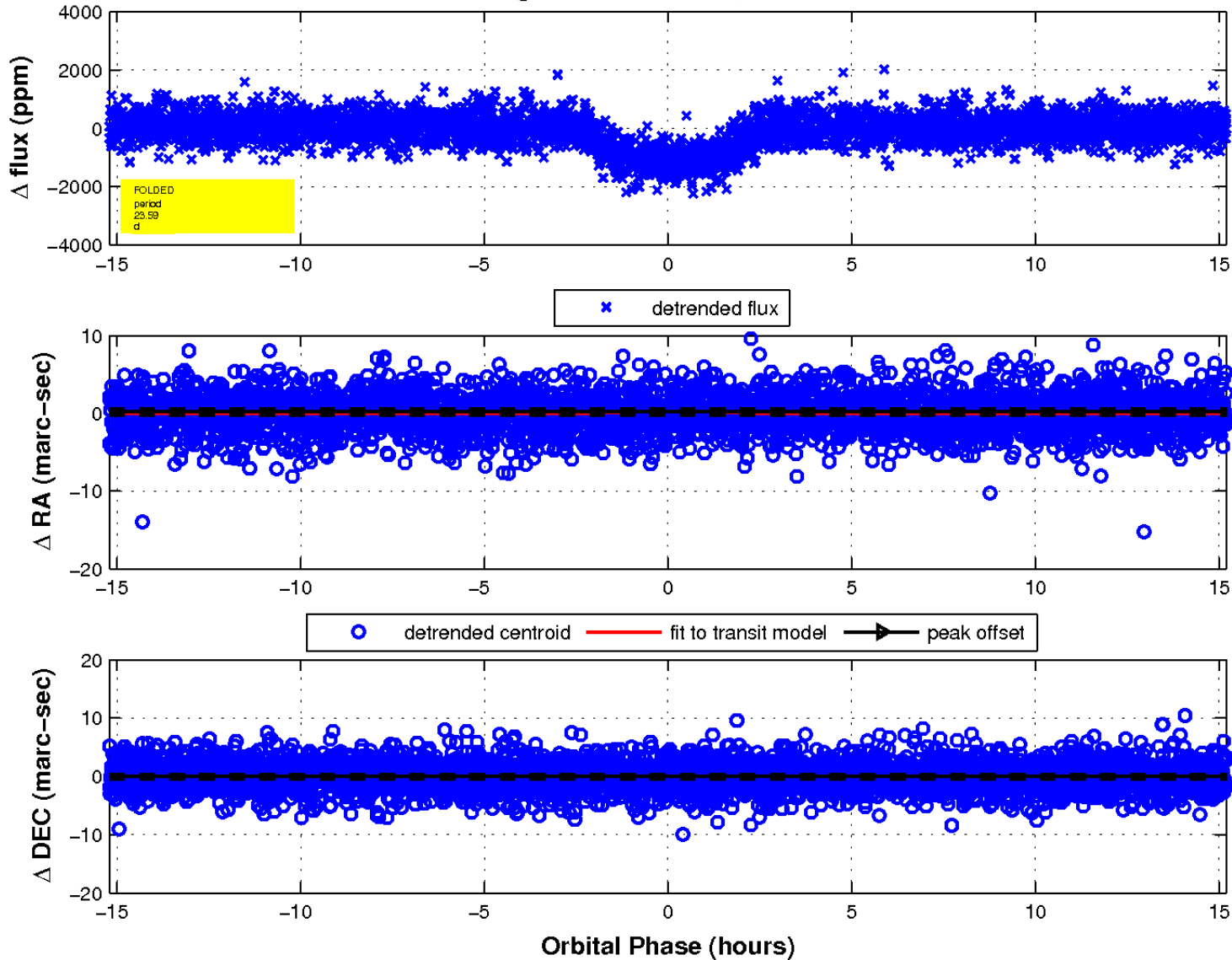




white  $\times$ : KIC target position;  $+$ : OOT centroid;  $\triangle$ : difference centroid. red  $\times$ : large negative pixel value.



fluxWeightedCentroids, Planet 1 of 1



UKIRT Image

Declination

