

KIC 007292935

Q1-17 DR25 TCE Parameters

TCE	Run Type	KOI?	Period (Days)	Epoch (BKJD)	Depth (ppm)	Duration (Hours)	MES	SNR	R_{\star} (R_{\odot})	T_{\star} (K)	R_p (R_{\oplus})	S_p (S_{\oplus})
007292935-01	OBS	No	1.137762	131.842940	0.2	9.821	12.1	0.2	2.96	6872	0.15	28822.12

Robovetter Results

TCE	Run Type	Disp	Score	N	S	C	E	Comments
007292935-01	OBS	FP	0.00	1	0	0	0	SWEET_NTL—LPP_DV—LPP_ALT—MOD_NONUNIQ_ALT—CENT_FEW_DIFFS

Notes: OBS = Observed. INJ = Injected. INV = Inverted. SCR = Scrambled.

N = Not Transit-Like. S = Stellar Eclipse. C = Centroid Offset. E = Ephemeris Match.

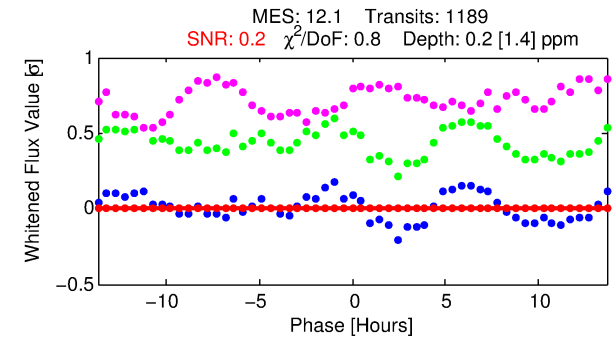
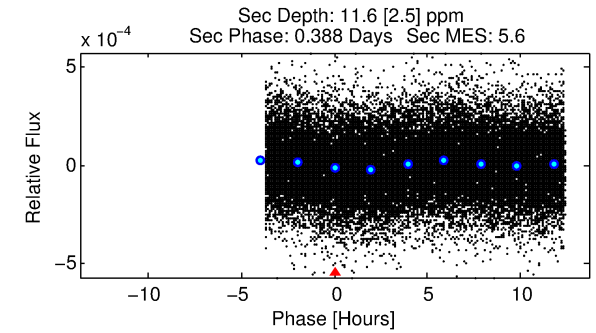
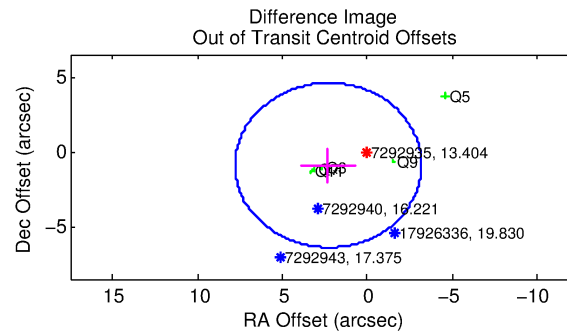
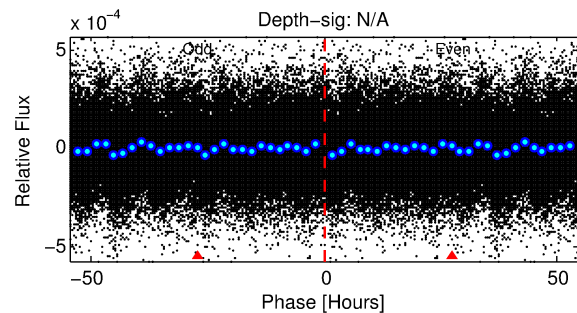
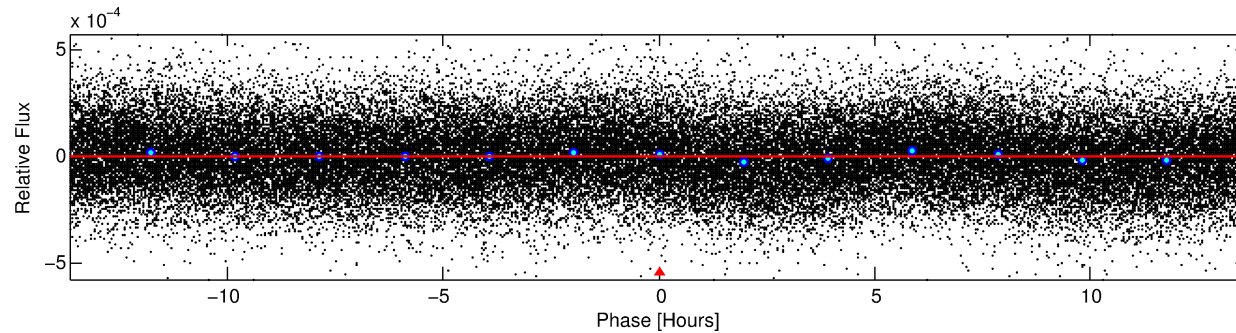
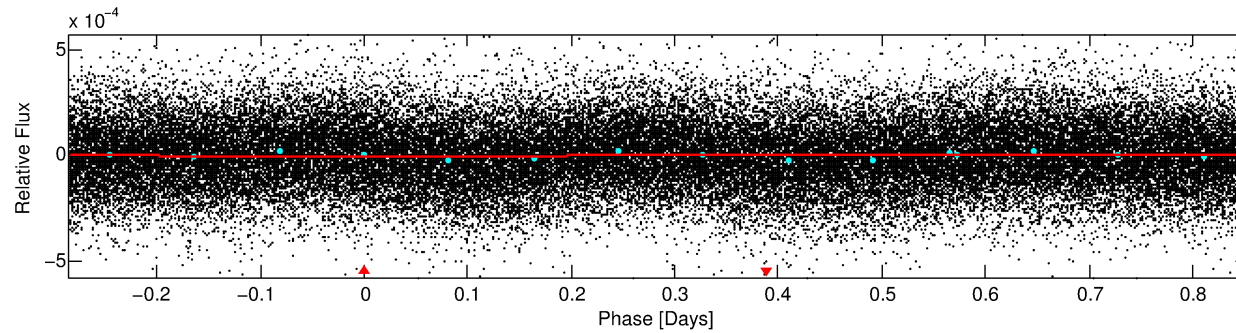
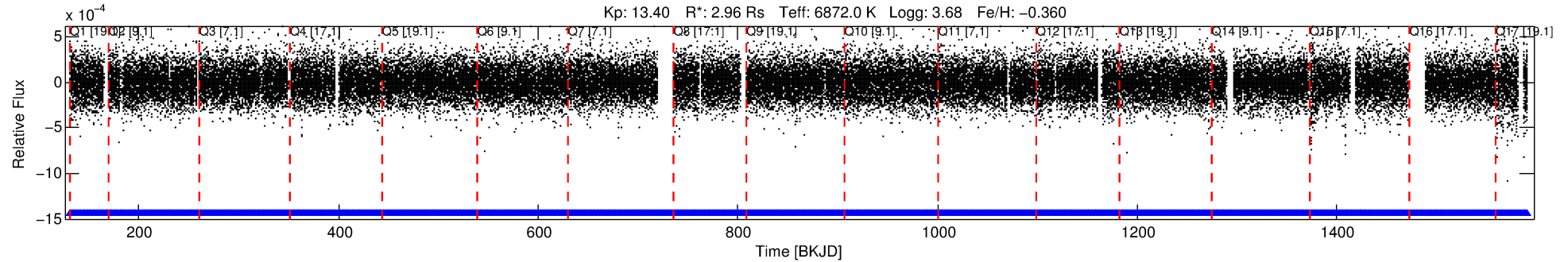
See http://exoplanetarchive.ipac.caltech.edu/docs/API_kepcandidate_columns.html#proj_disp_col for comment definitions.

Ephemeris Match Information For 007292935-01

No Significant Match Found

DV One-Page Summary

KIC: 7292935 Candidate: 1 of 1 Period: 1.138 d



DV Fit Results:

Period = 1.13776 [0.00133] d
Epoch = 131.8429 [0.4598] BKJD
Rp/R* = 0.0005 [0.0053]
a/R* = 1.08 [10.15]
b = 0.51 [97.24]
Seff = 28822.13 [16248.24]
Teq = 3322 [468] K
Rp = 0.15 [1.71] Re
a = 0.0246 [0.0085] AU
Ag = 178.01 [4133.41] [0.04σ]
Teffp = 18763 [108896] K [0.14σ]

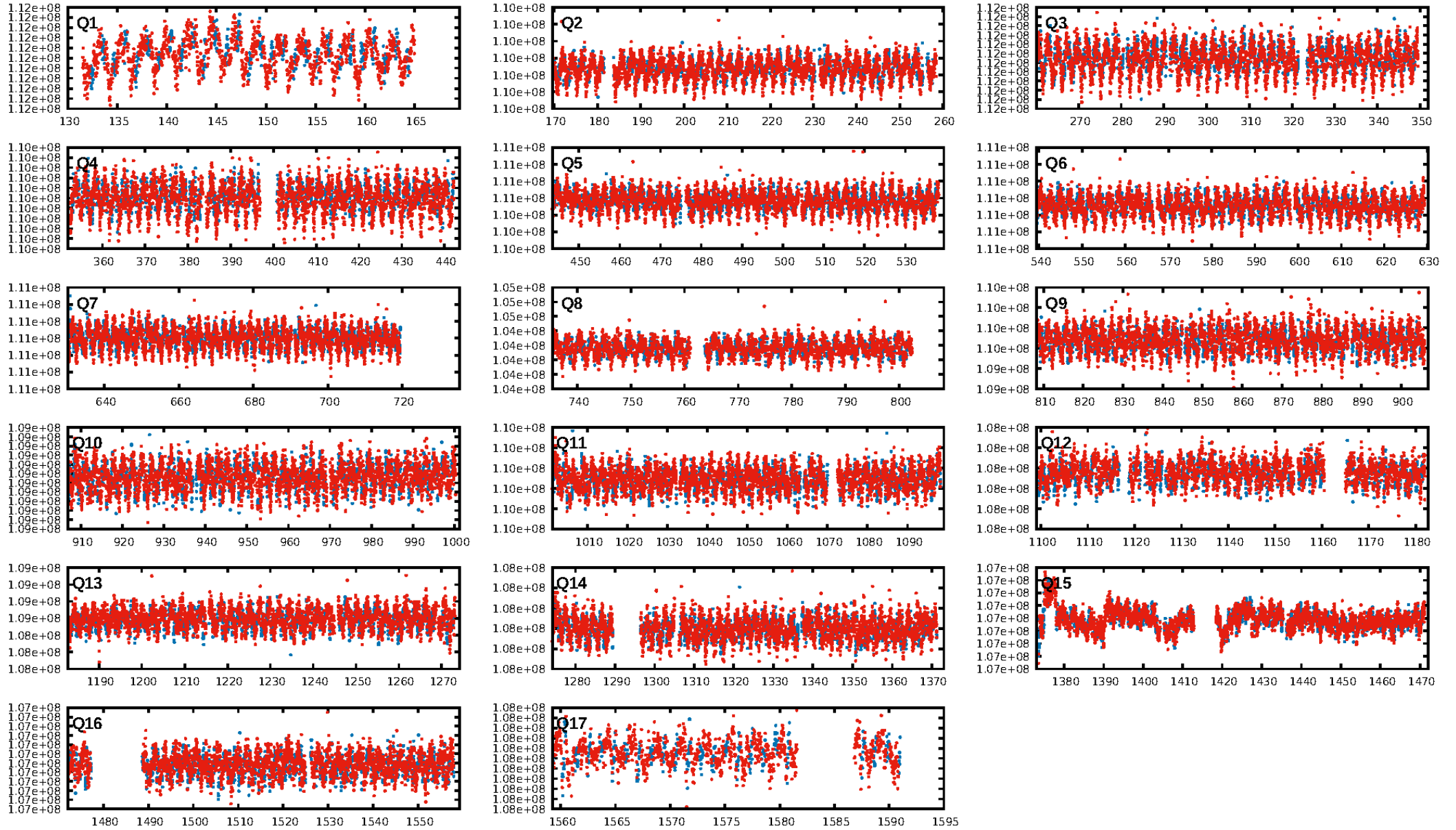
DV Diagnostic Results:

ShortPeriod-sig: N/A
LongPeriod-sig: N/A
ModelChiSquare2-sig: N/A
ModelChiSquareGof-sig: N/A
Bootstrap-pfa: N/A
RollingBand-fgt: 1.00 [1135/1135]
GhostDiagnostic-chr: N/A
Centroid-sig: N/A
Centroid-so: N/A
OotOffset-rm: 2.455 arcsec [1.34σ]
KicOffset-rm: 2.452 arcsec [1.50σ]
OotOffset-st: 0/3/0/2 [5]
KicOffset-st: 0/3/0/2 [5]
DiffImageQuality-fgm: 0.40 [2/5]
DiffImageOverlap-fno: 1.00 [17/17]

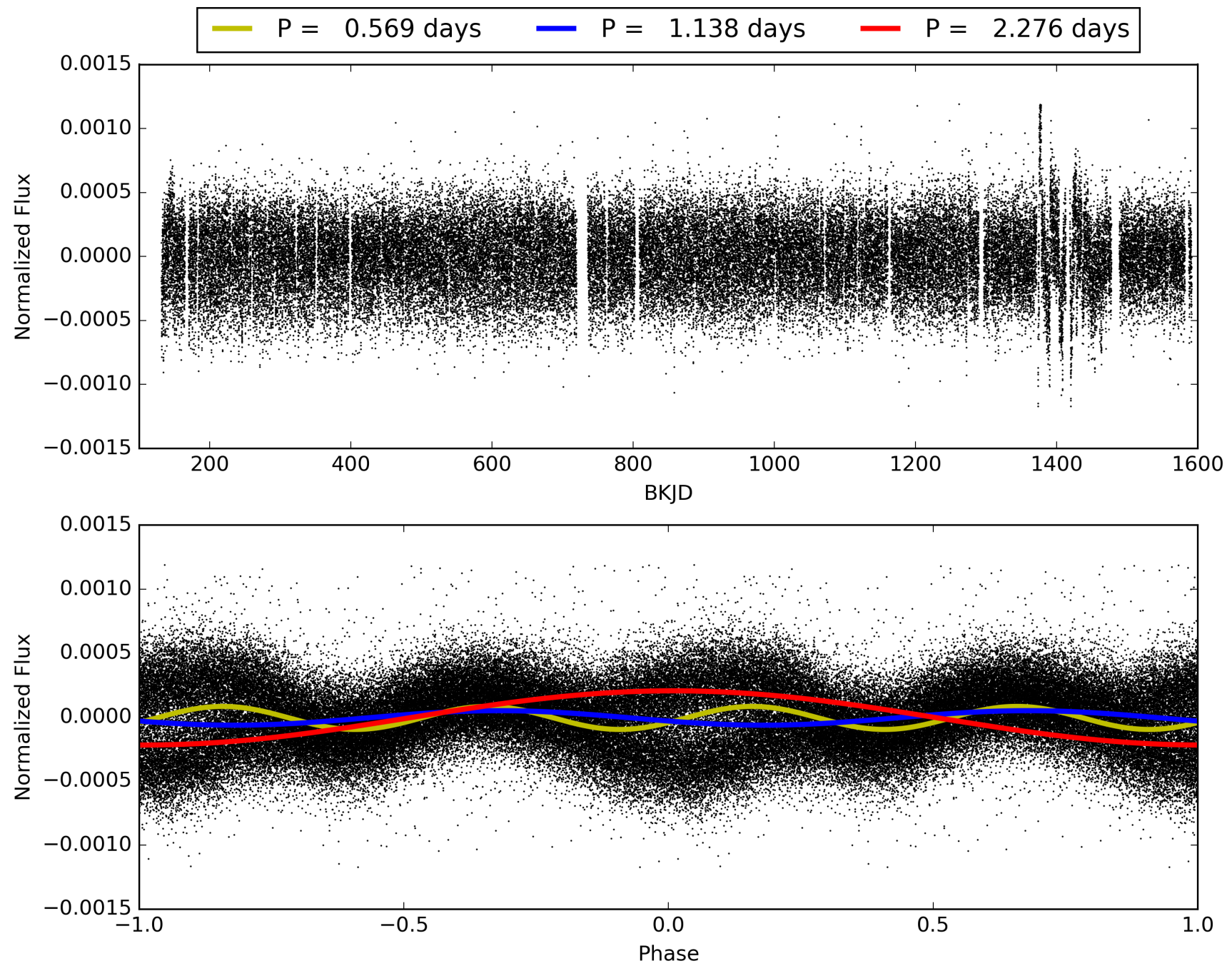
Software Revision: svn+ssh://murzim/repo/soc/tags/release/9.3.42@60958 -- Date Generated: 30-Jan-2016 15:26:02 Z

This Data Validation Report Summary was produced in the Kepler Science Operations Center Pipeline at NASA Ames Research Center

TCE 007292935-01, PDC Light Curves

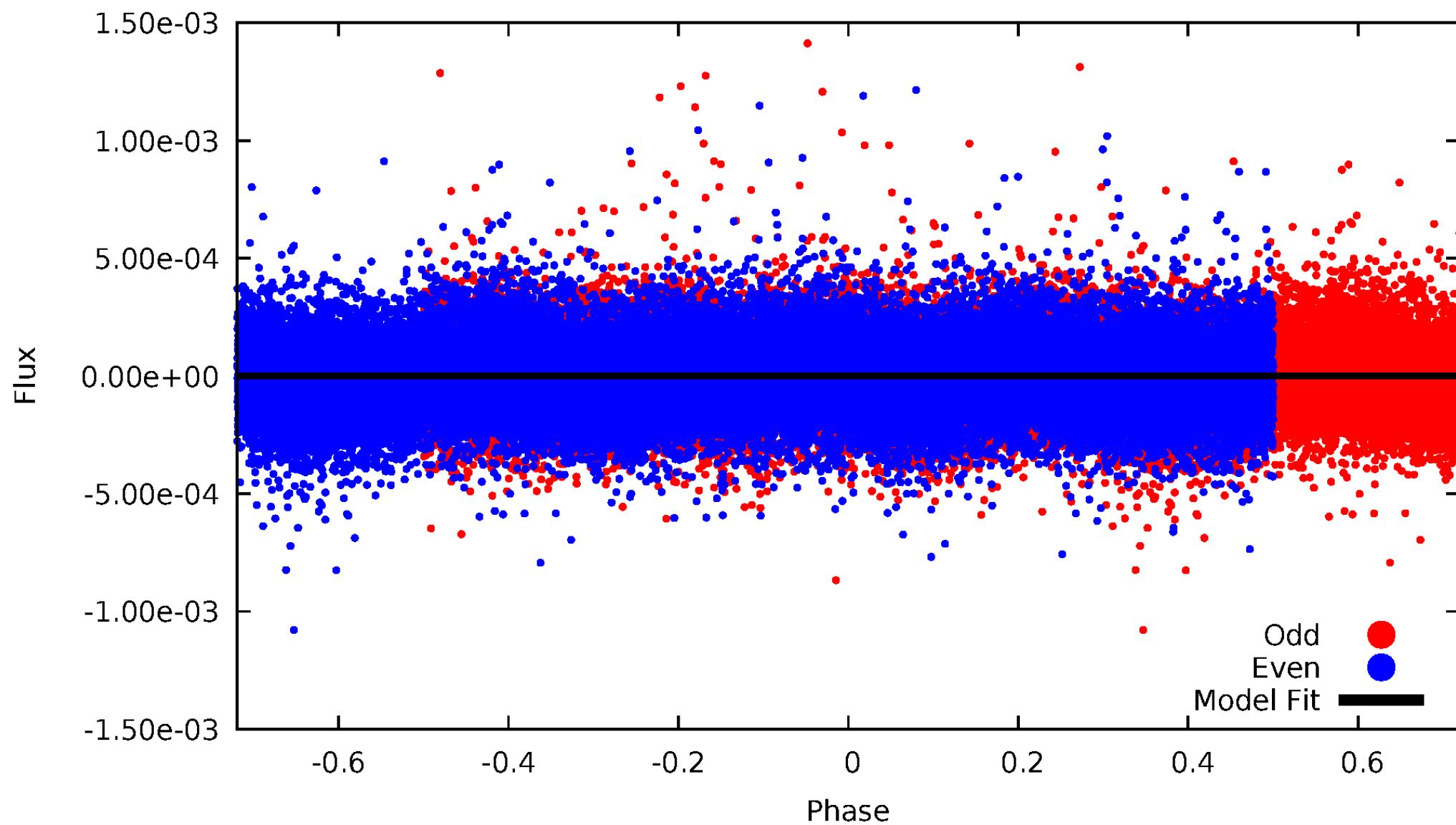


TCE 007292935-01



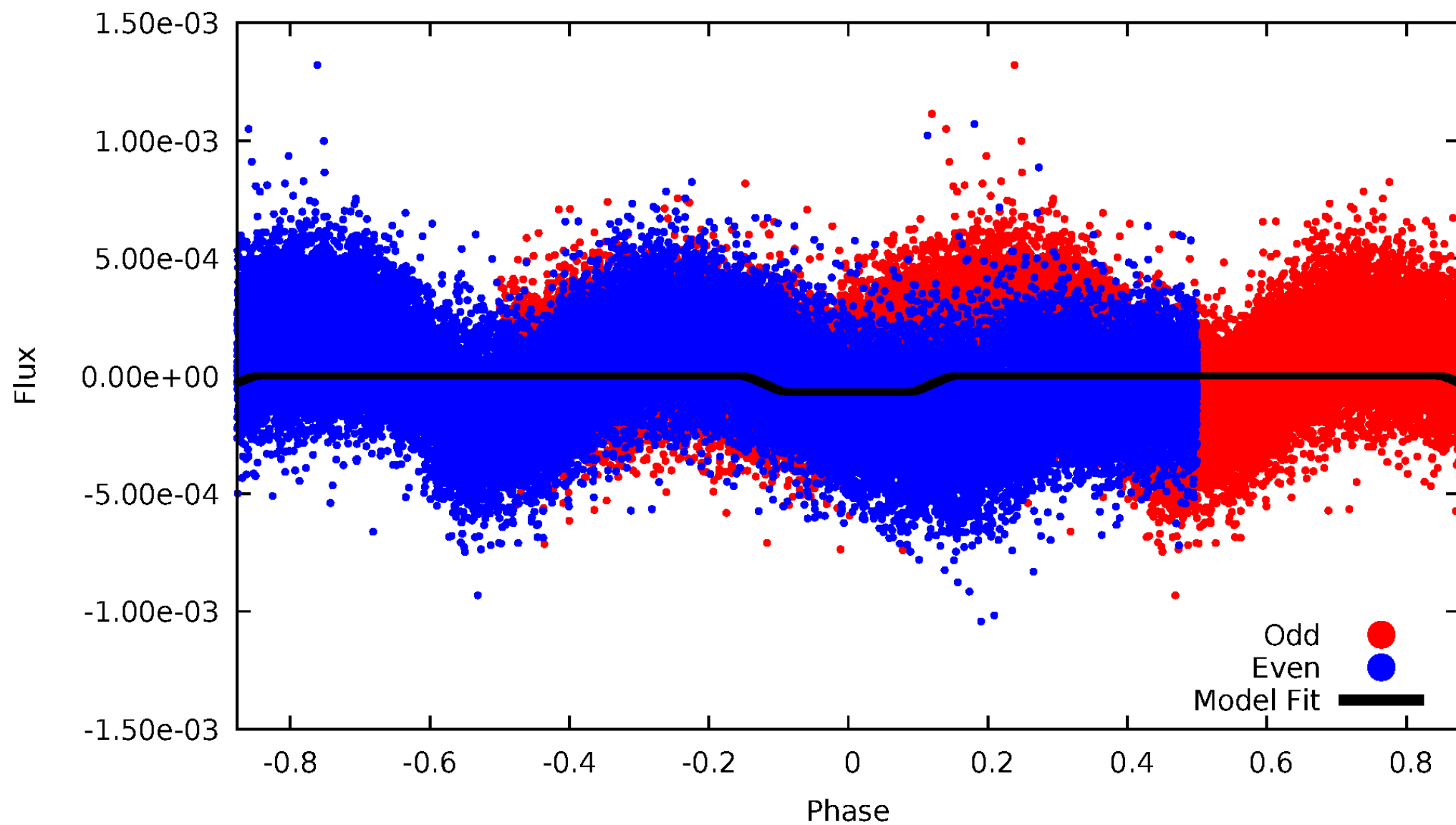
DV Odd/Even

TCE 007292935-01



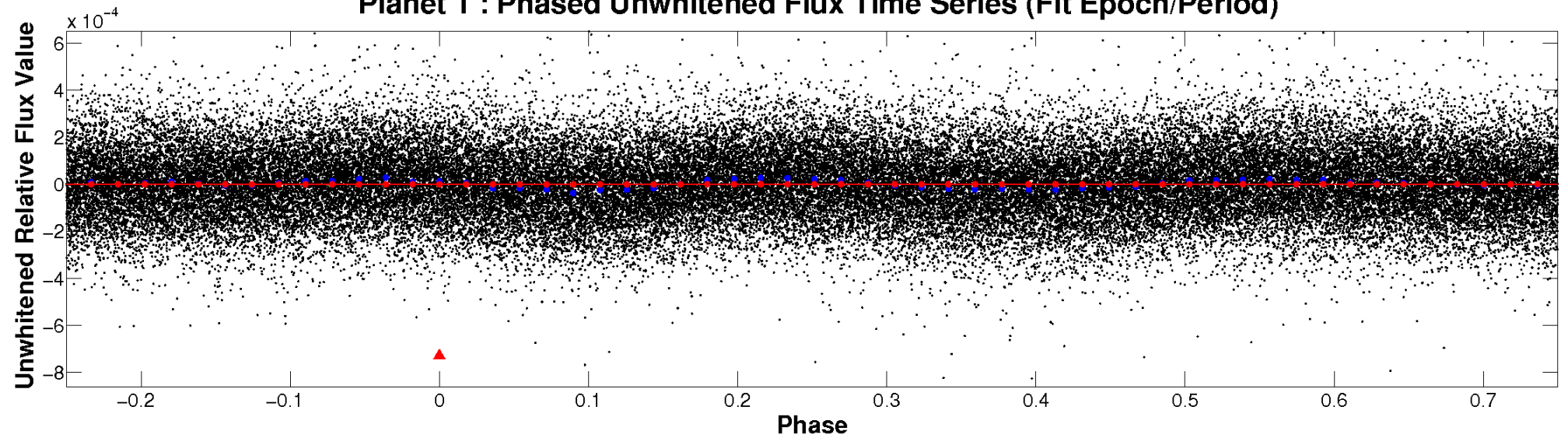
ALT Odd/Even

TCE 007292935-01

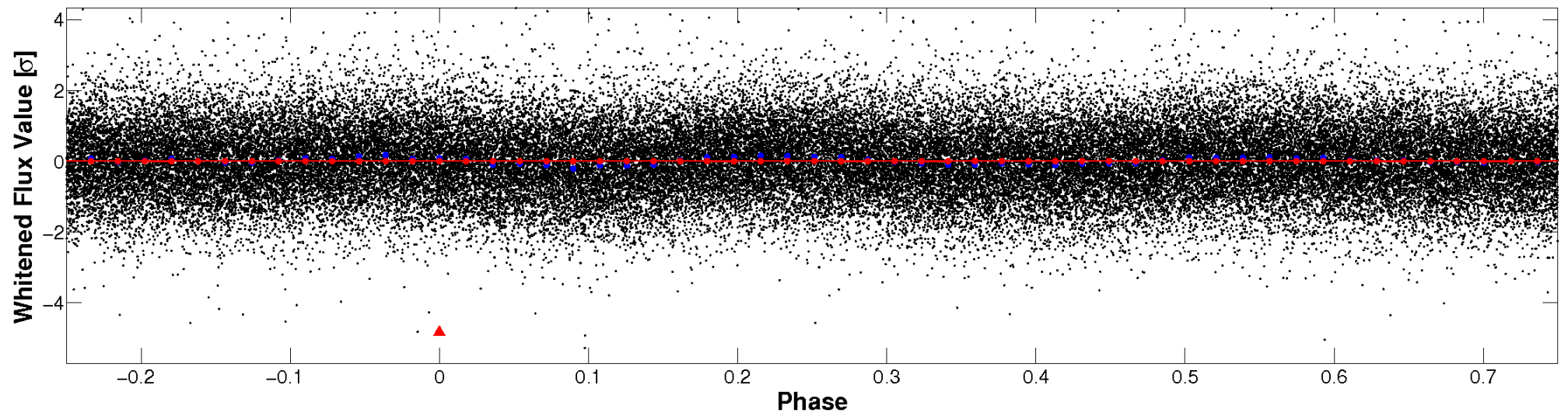


Non-Whitened Vs. Whitened Light Curve

Planet 1 : Phased Unwhitened Flux Time Series (Fit Epoch/Period)

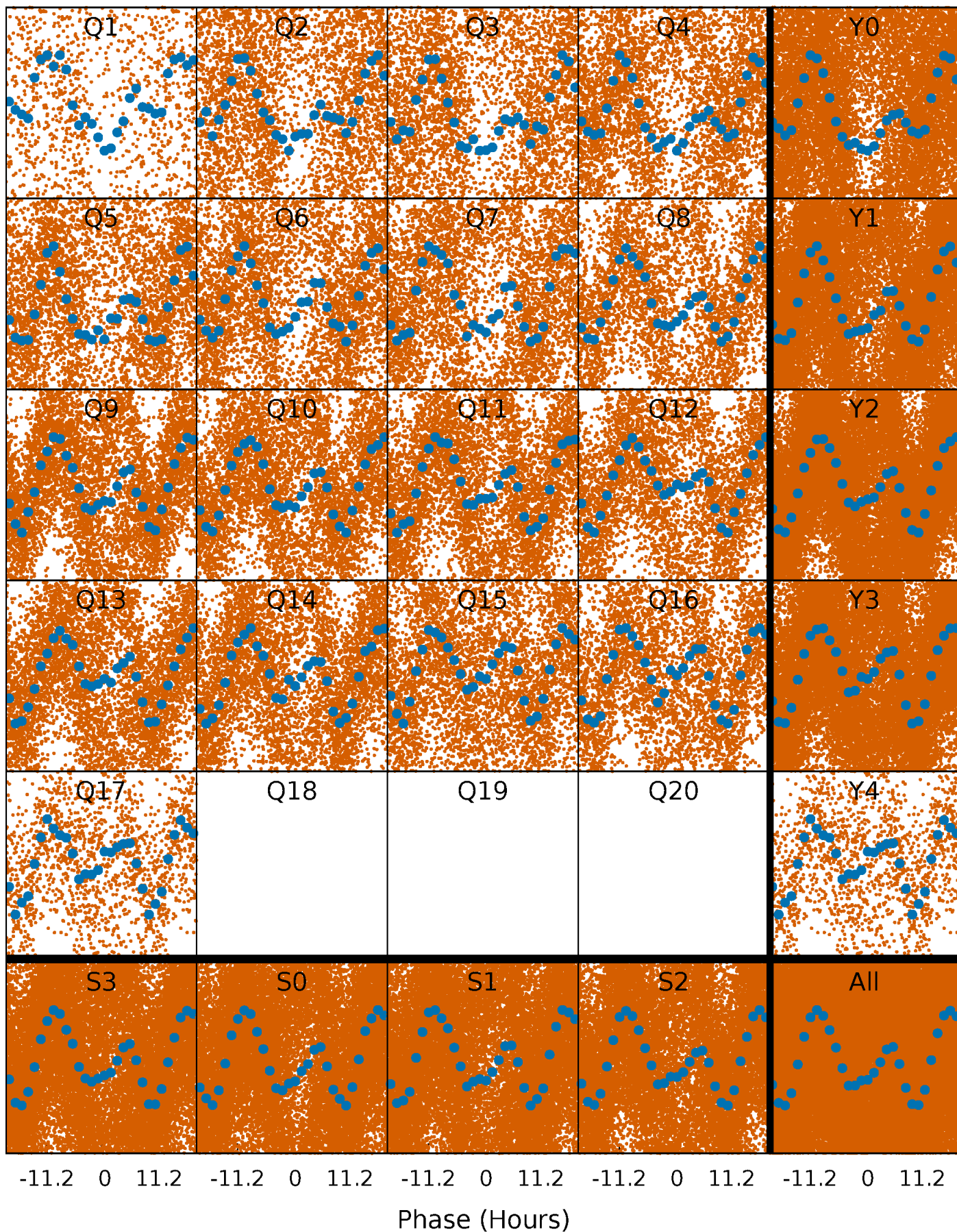


Planet 1 : Phased Whitened Flux Time Series (Fit Epoch/Period)



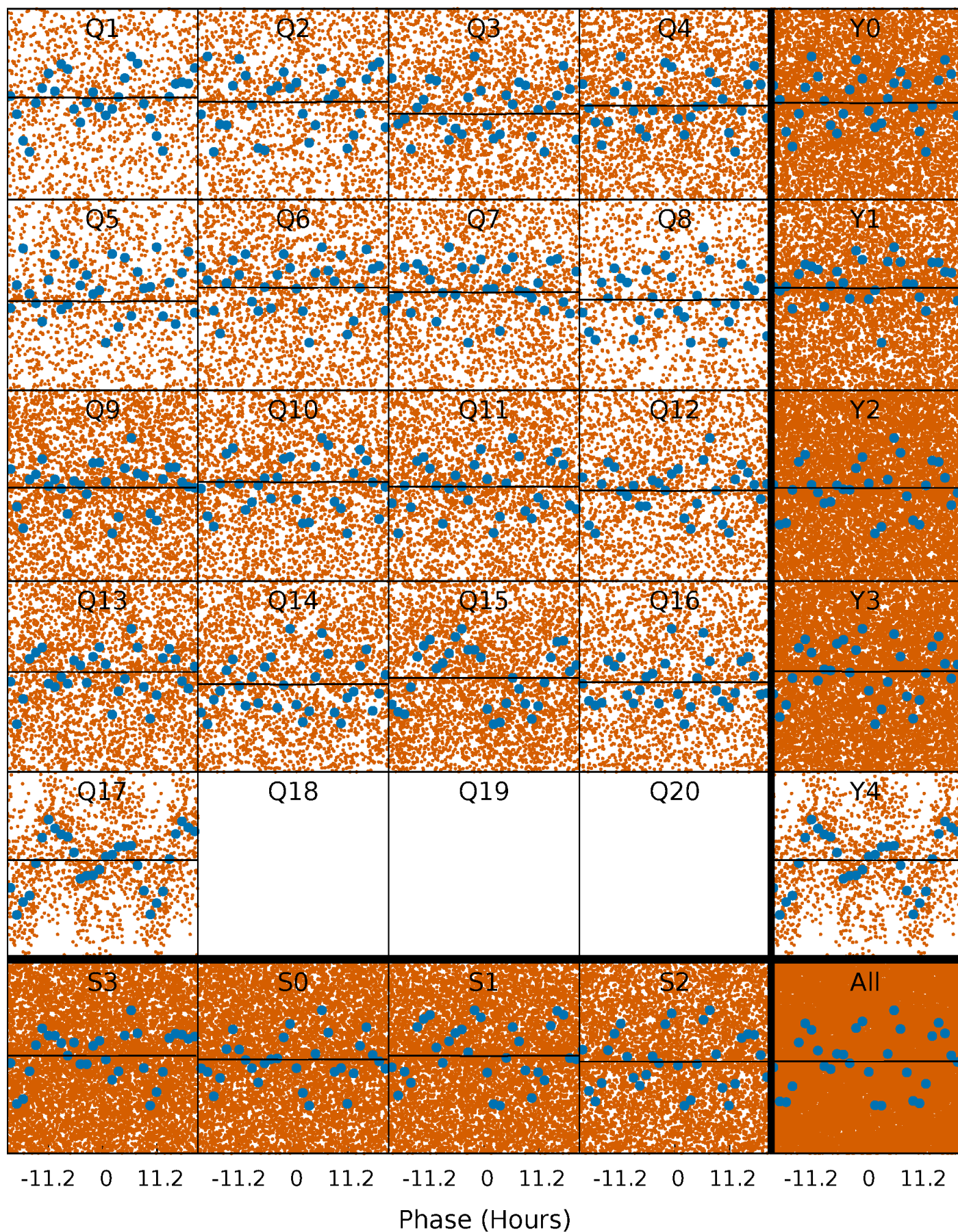
PDC Quarter-Phased Transit Curves

TCE 007292935-01 P= 1.137762 Days $T_0=131.842940$ (BKJD)



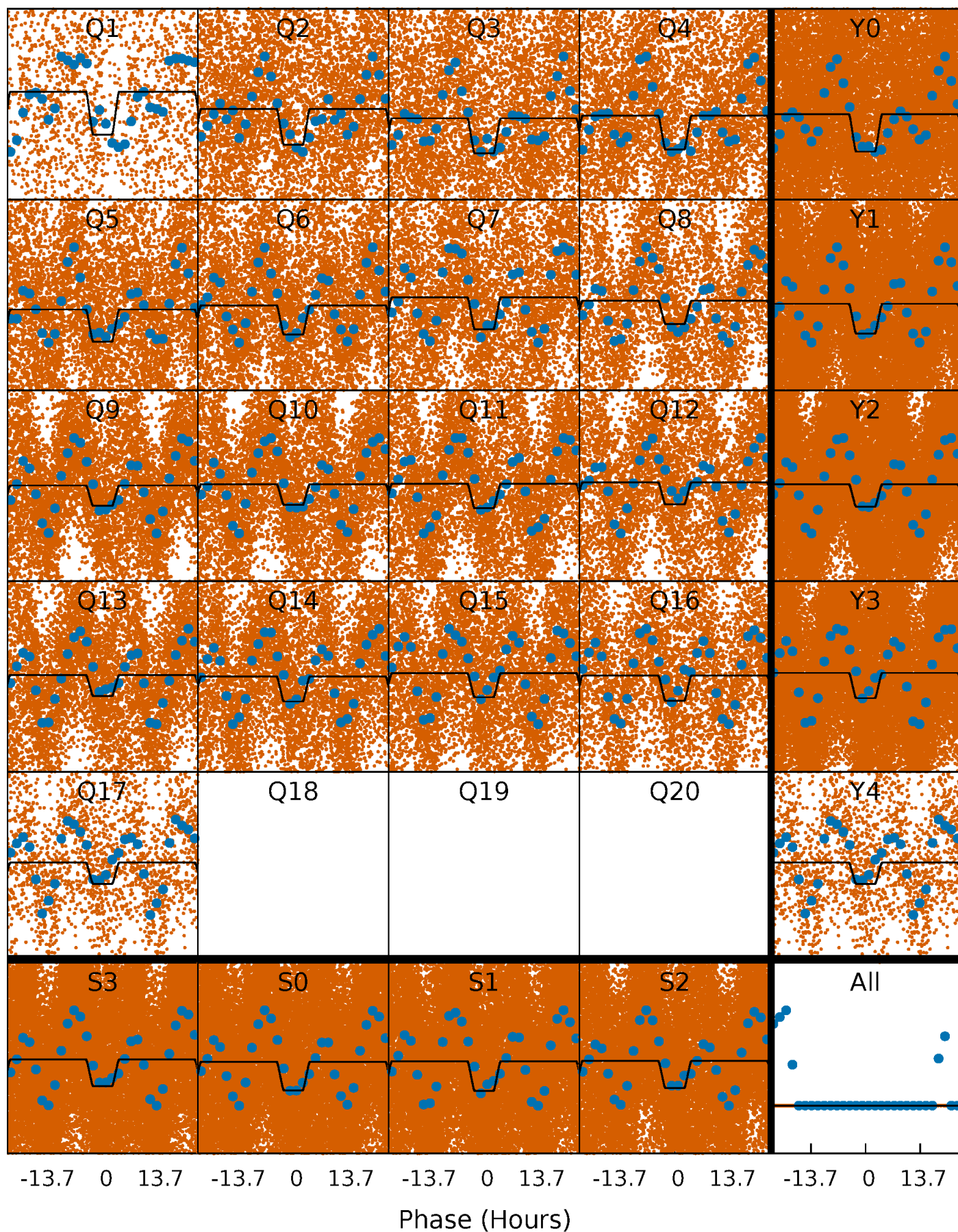
DV Quarter-Phased Transit Curves

TCE 007292935-01 P= 1.137762 Days $T_0=131.842940$ (BKJD)



Alt. Detrend Quarter-Phased Transit Curves

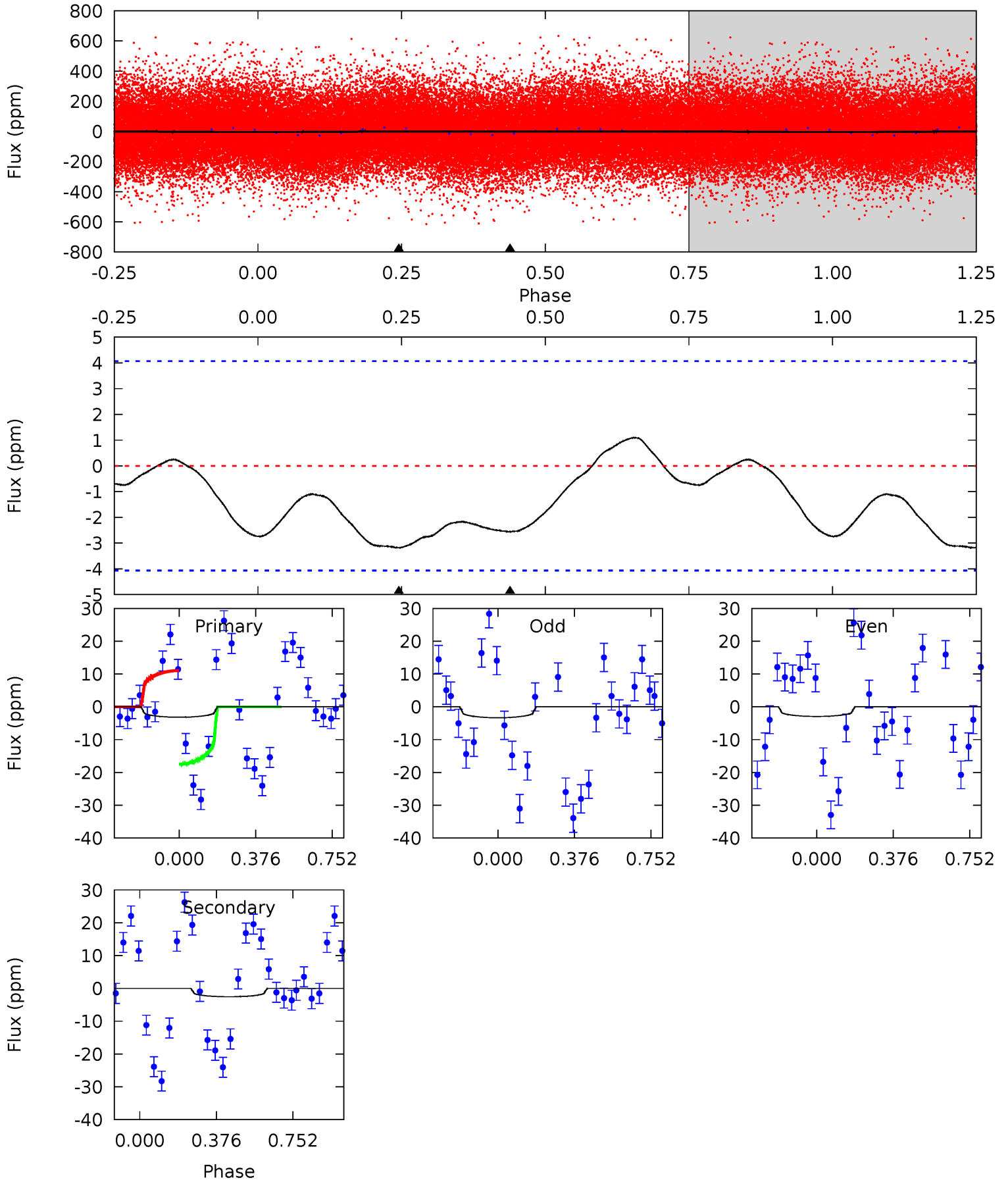
TCE 007292935-01 P= 1.137772 Days $T_0=131.727702$ (BKJD)



DV Model-Shift Uniqueness Test

007292935-01, P = 1.137762 Days, E = 130.705178 Days

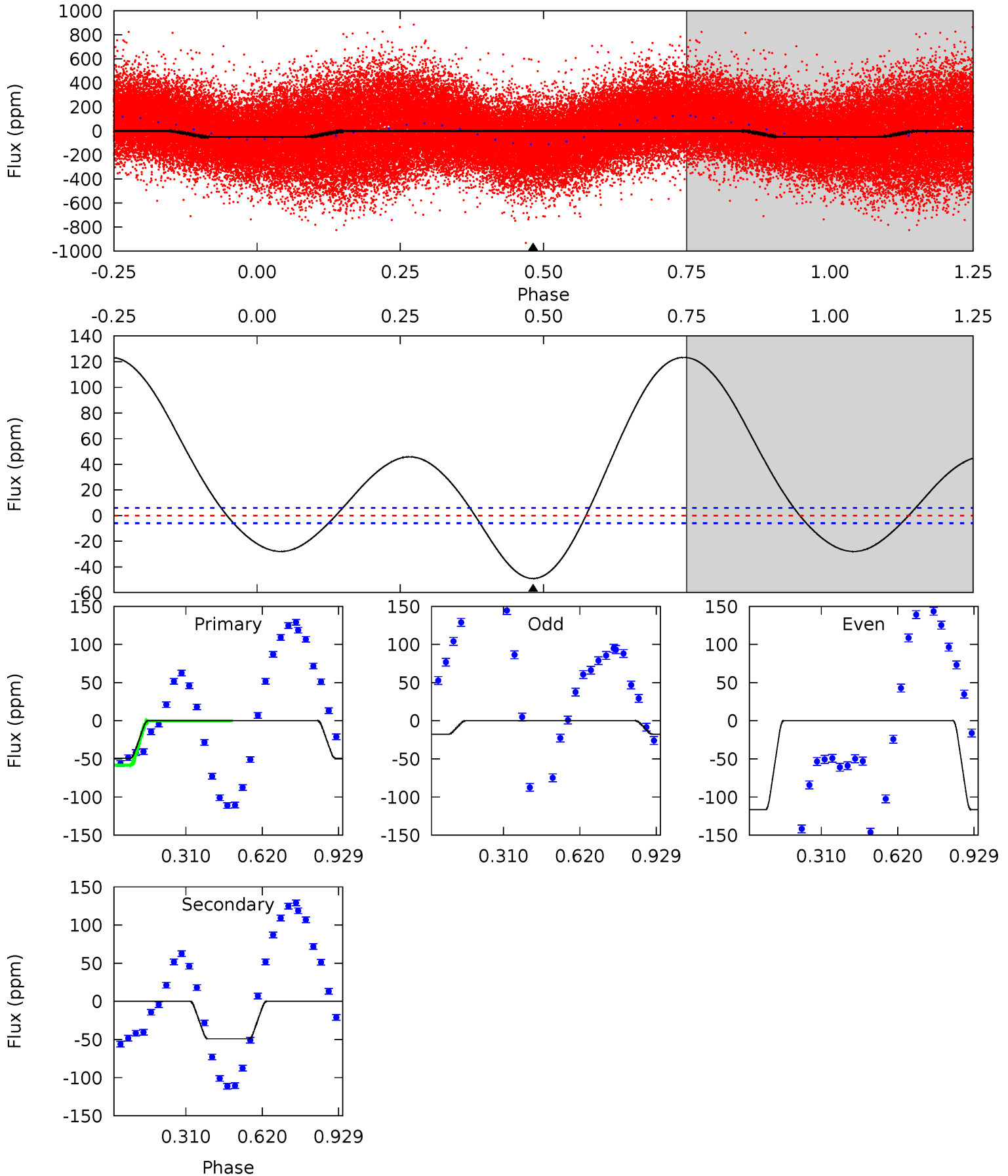
Pri	Sec	Ter	Pos	FA ₁	FA ₂	F _{Red}	Pri-Ter	Pri-Pos	Sec-Ter	Sec-Pos	Odd-Evn	DMM	Shape	TAT
3.35	2.69	0	0	4.28	0.89	0.21	3.35	3.35	2.69	2.69	0.21	0.74	0.26	3.36



Alt Model-Shift Uniqueness Test

007292935-01, P = 1.137772 Days, E = 130.589930 Days

Pri	Sec	Ter	Pos	FA ₁	FA ₂	F _{Red}	Pri-Ter	Pri-Pos	Sec-Ter	Sec-Pos	Odd-Evn	DMM	Shape	TAT
35.3	35.3	0	0	4.32	1.02	30.4	35.3	35.3	35.3	35.3	37.2	1.06	0.72	7.01



Stellar Parameters For KIC 007292935

	$T_{\text{eff}}(K)$	$\log(g)$	[Fe/H]	R (R_{\odot})	M (M_{\odot})	p_{\star} ($\text{g}\cdot\text{cm}^{-3}$)
	6872^{+183}_{-224}	$3.683^{+0.320}_{-0.080}$	$-0.360^{+0.300}_{-0.250}$	$2.957^{+0.386}_{-1.082}$	$1.536^{+0.231}_{-0.308}$	$0.084^{+0.194}_{-0.021}$
	+3%/-3%	+9%/-2%	+83%/-69%	+13%/-37%	+15%/-20%	+231%/-26%
Source	PHO1	FLK73	KIC0	DSEP		

KIC = Kepler Input Catalog; PHO = Photometry; SPE = Spectroscopy; AST = Asteroseismology
 TRA = Transits; DESP = Dartmouth Models; MULT = Multiple Models

Secondary Eclipse Parameters for KIC 007292935-01 / KOI

Detrend	Depth (ppm)	R_p (R_{\oplus})	T_{max} (K)	T_{obs} (K)	A_{obs}
DV	-3 ± 1	$1.15^{+1.11}_{-0.78}$	4547^{+247}_{-408}	4019^{+3687}_{-7620}	$0.646^{+5.604}_{-0.509}$
Alt.	-49 ± 1	$2.61^{+1.62}_{-1.46}$	4551^{+267}_{-438}	5863^{+3733}_{-1302}	$2.440^{+9.748}_{-1.549}$

T_{max} = Theoretical Maximum Planetary Temperature

T_{obs} = Observed Planetary Temperature (Assuming $A=0.3$)

A_{obs} = Observed Albedo (Assuming $T=0$)

If a secondary eclipse is present, the system is likely an EB if $T_{obs} \gg T_{max}$ AND $A_{obs} \gg 1.0$

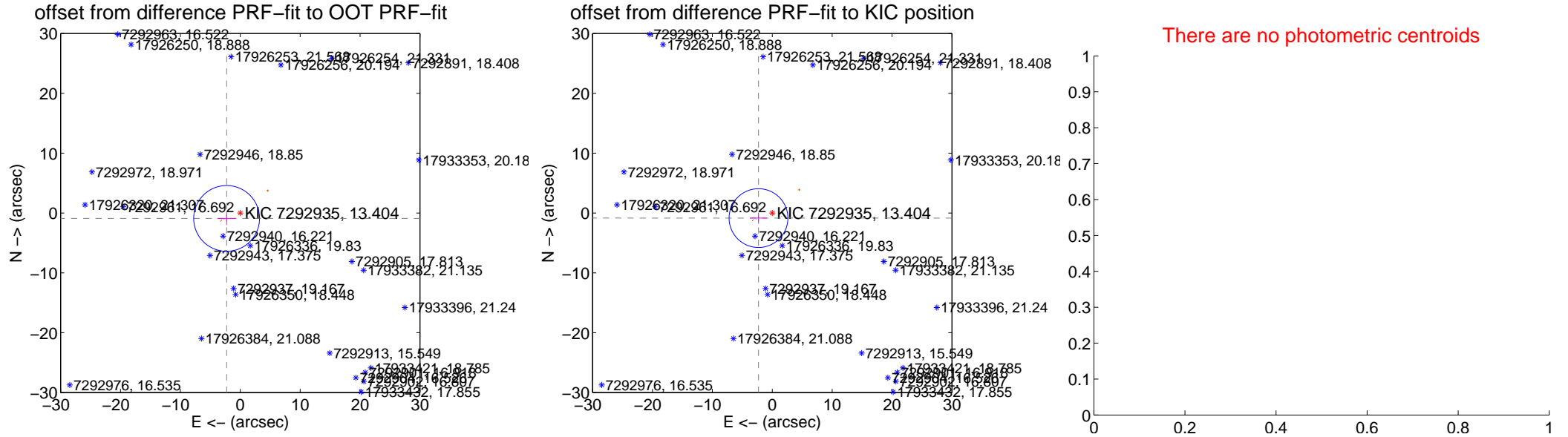
DV Centroid Data

Supplemental centroid analysis for 007292935-01. Kepler magnitude: 13.40. Transit SNR 0.17

There are 2 quarters with good PRF difference image offsets

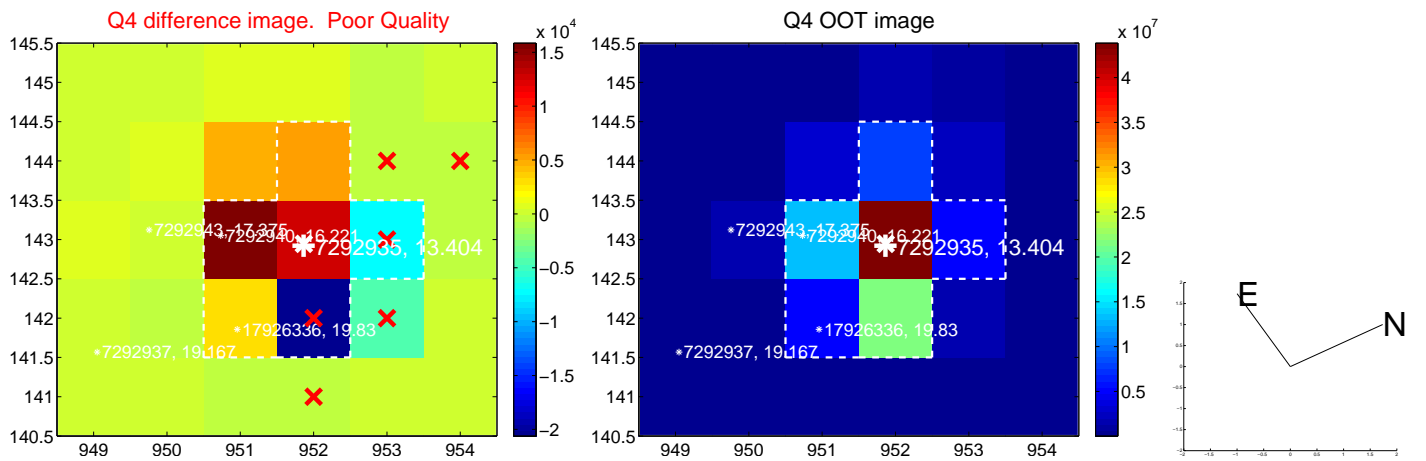
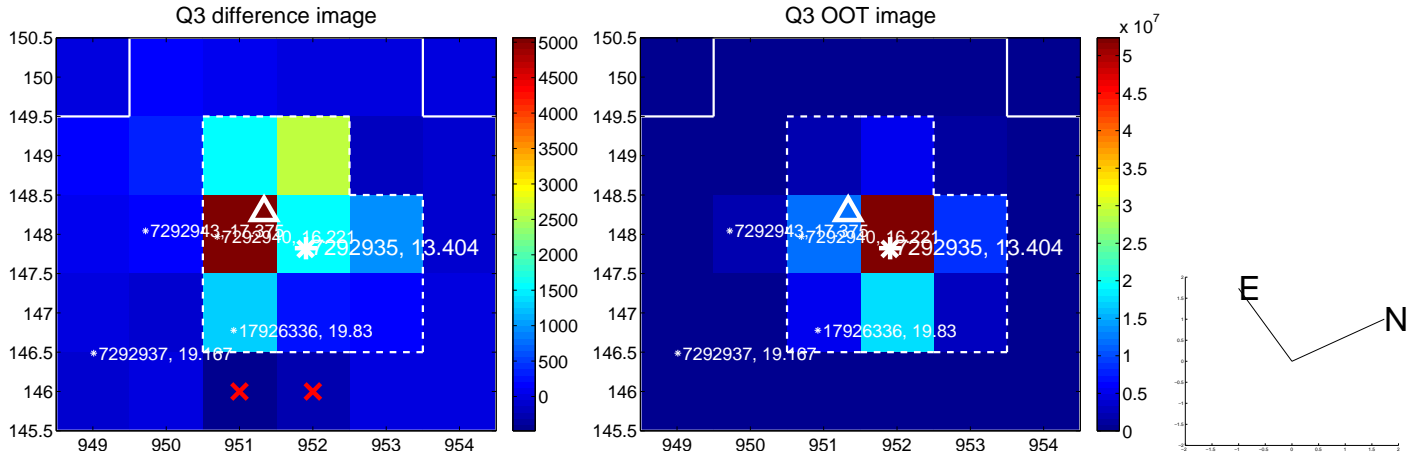
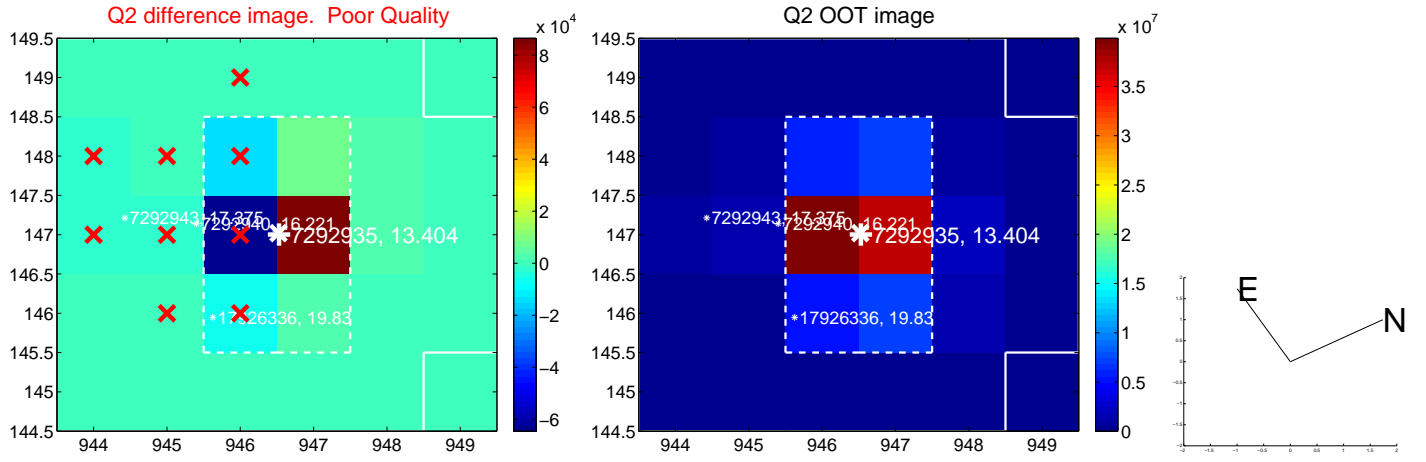
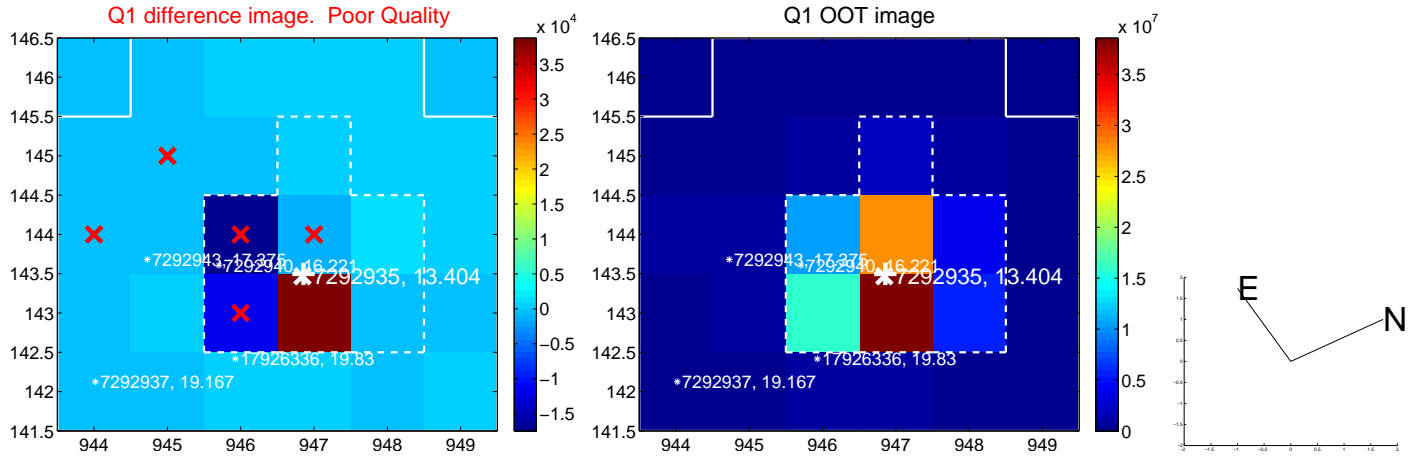
The direct PRF centroid is offset from the target star catalog position by about 0.07 arcsec

	Distance in arcsec	Distance / σ	Δ RA	Δ Dec
PRF-fit source offset from OOT	2.455 ± 1.832	1.34	2.283 ± 1.557	-0.905 ± 1.102
PRF-fit source offset from KIC position	2.452 ± 1.637	1.50	2.300 ± 1.428	-0.850 ± 0.929
photometric centroid source offset	—	—	—	—

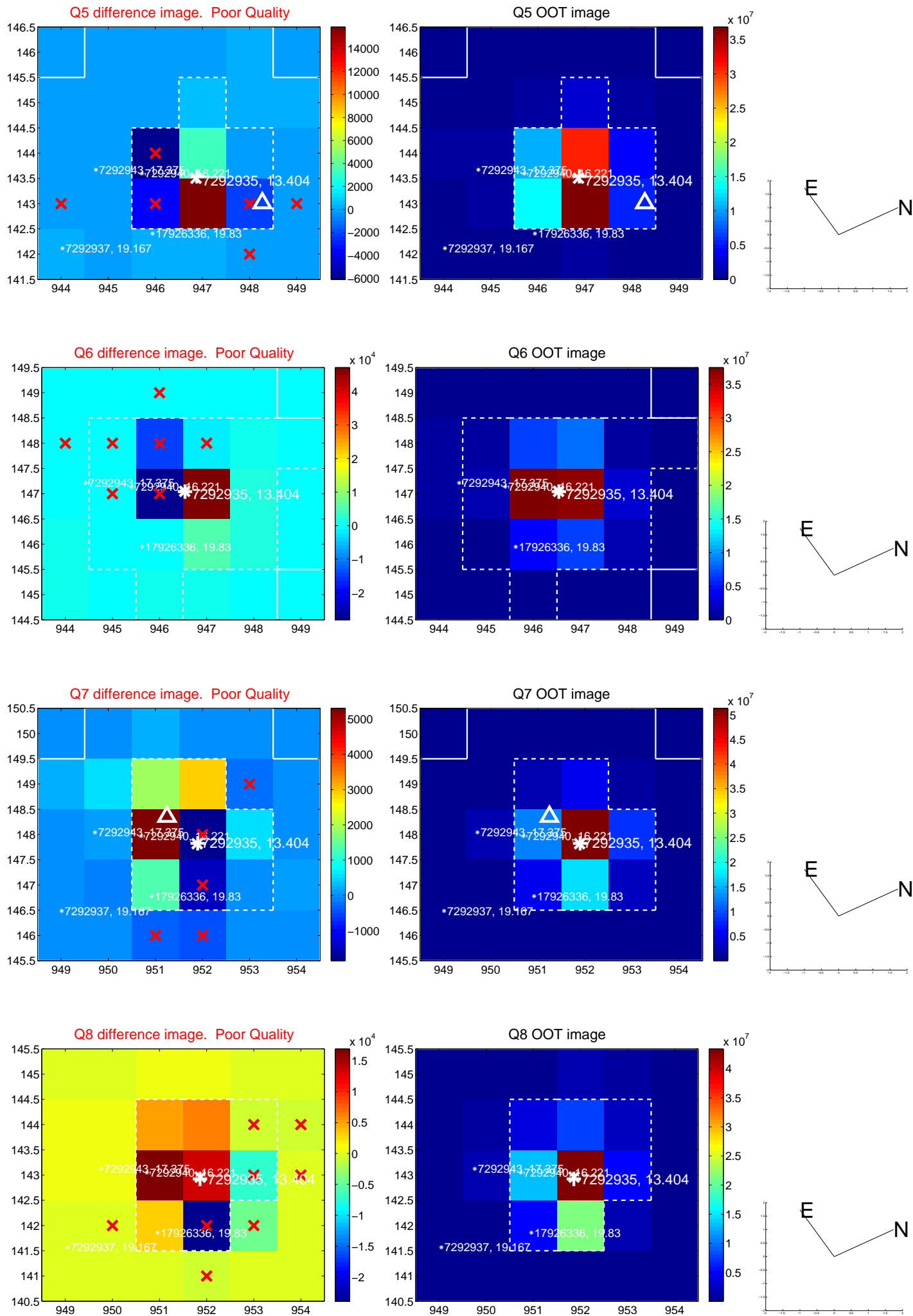


Centroid source offsets from the target star reconstructed from PRF and photometric centroids. Sky blue crosses: good quarterly centroid offsets; Vermillion crosses: bad quarterly centroid offsets; magenta cross: average over quarters. Length of the crosses: one- σ uncertainty. Blue circle: three- σ . Red *: target star. Blue *: Other stars. Text next to a star gives its KIC ID and kepmag. KIC IDs > 15,000,000 are from the UKIRT catalog.

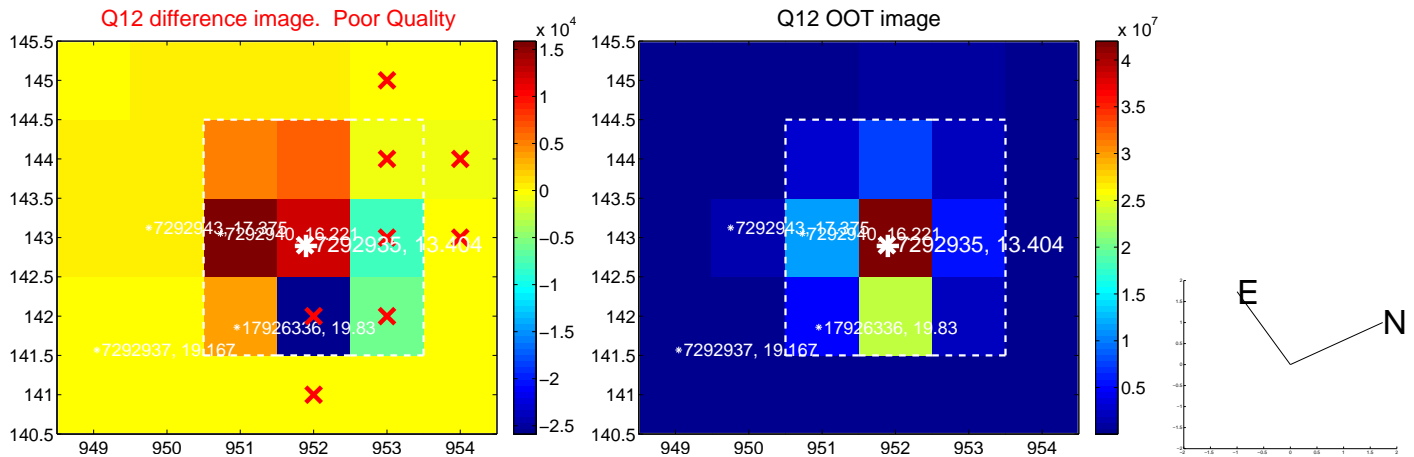
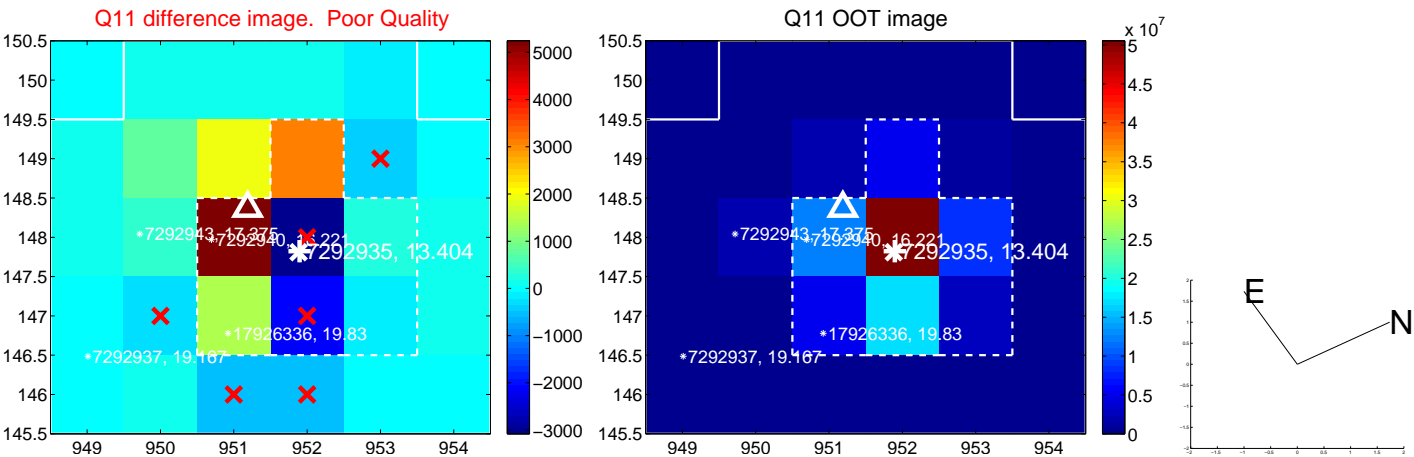
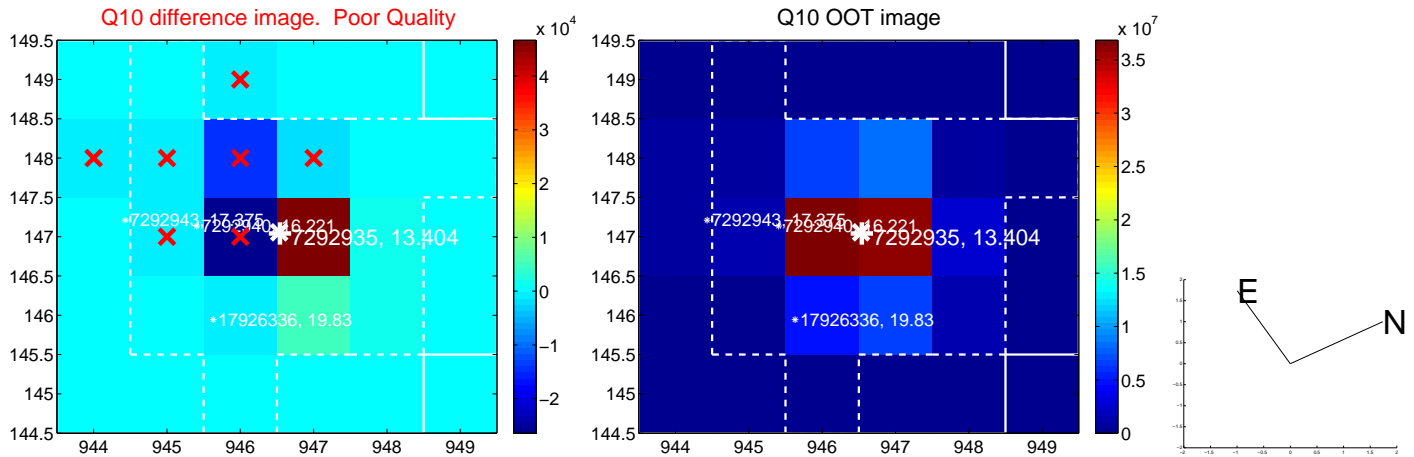
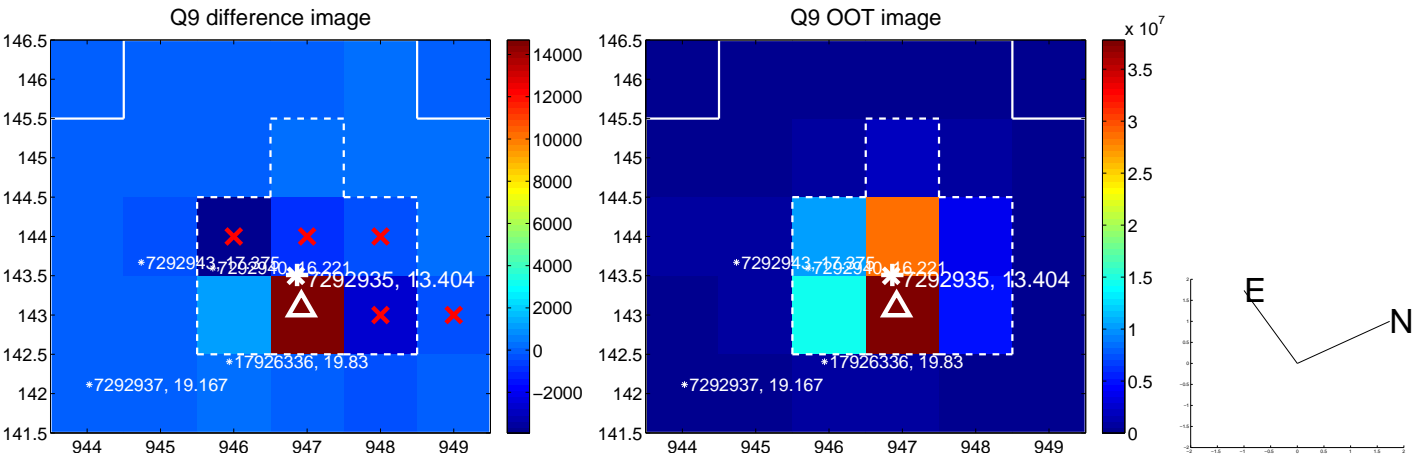
white \times : KIC target position; $+$: OOT centroid; \triangle : difference centroid. red \times : large negative pixel value.



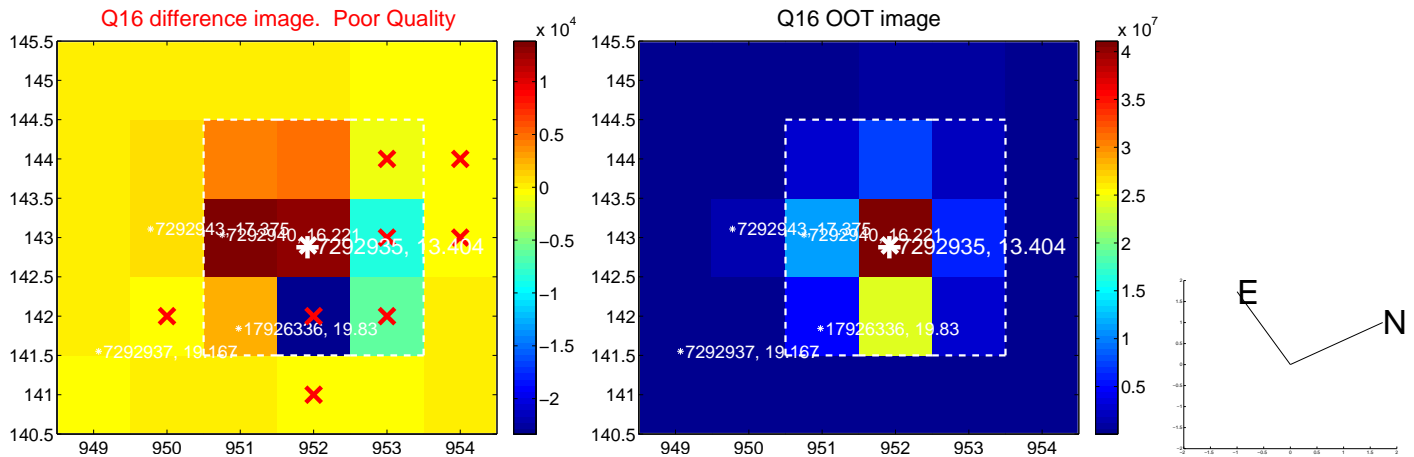
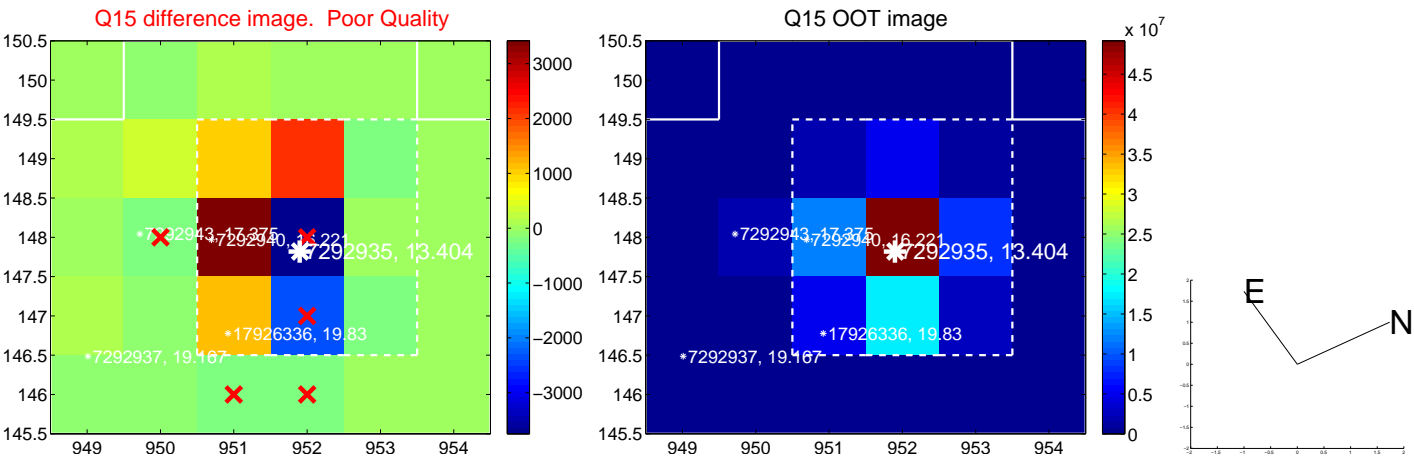
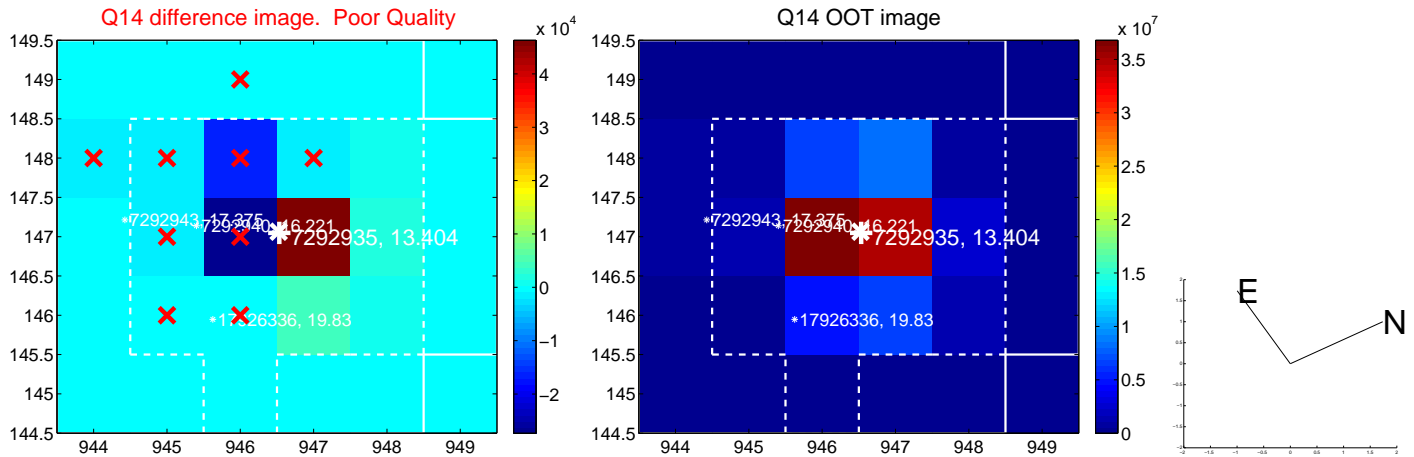
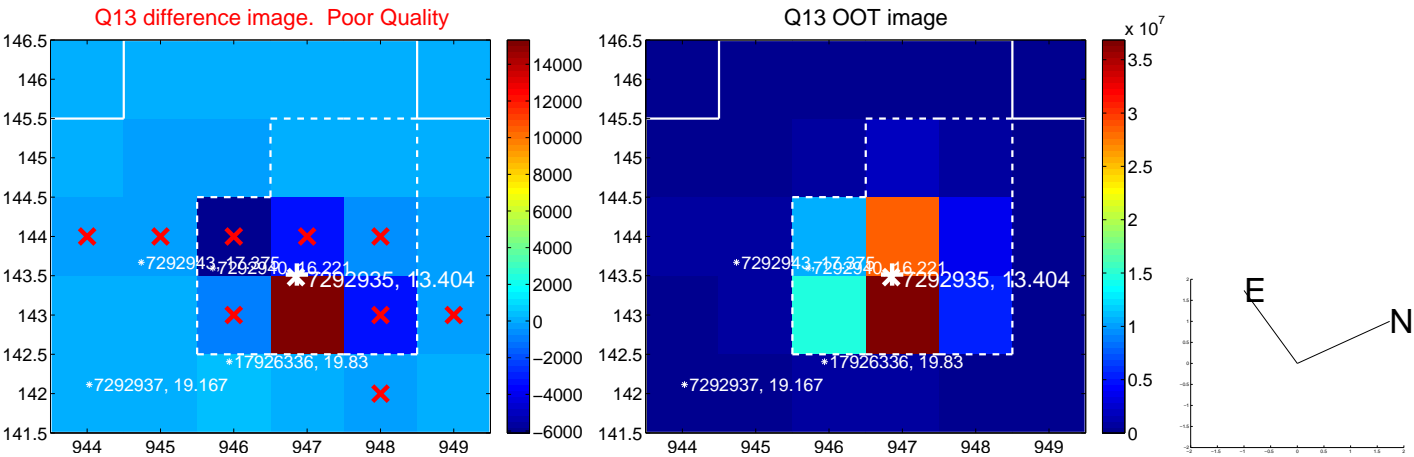
white \times : KIC target position; +: OOT centroid; \triangle : difference centroid. red \times : large negative pixel value.



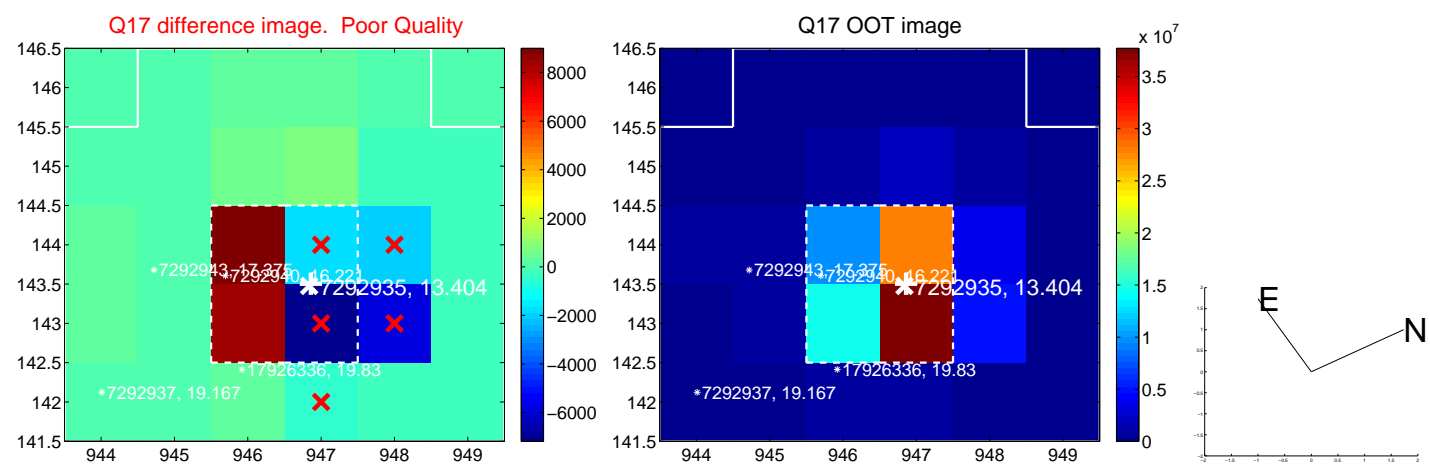
white \times : KIC target position; +: OOT centroid; \triangle : difference centroid. red \times : large negative pixel value.



white \times : KIC target position; +: OOT centroid; \triangle : difference centroid. red \times : large negative pixel value.



white \times : KIC target position; $+$: OOT centroid; \triangle : difference centroid. red \times : large negative pixel value.



folded centroid time series figure for this object.

UKIRT Image

Declination

