

KIC 007292469

Q1-17 DR25 TCE Parameters

TCE	Run Type	KOI?	Period (Days)	Epoch (BKJD)	Depth (ppm)	Duration (Hours)	MES	SNR	R_{\star} (R_{\odot})	T_{\star} (K)	R_p (R_{\oplus})	S_p (S_{\oplus})
007292469-01	OBS	No	0.733714	132.224177	22.1	2.622	9.7	10.0	1.47	6086	0.82	9092.23

Robovetter Results

TCE	Run Type	Disp	Score	N	S	C	E	Comments
007292469-01	OBS	FP	0.00	1	0	1	0	LPP_DV—LPP_ALT—CENT_SATURATED—HALO_GHOST

Notes: OBS = Observed. INJ = Injected. INV = Inverted. SCR = Scrambled.

N = Not Transit-Like. S = Stellar Eclipse. C = Centroid Offset. E = Ephemeris Match.

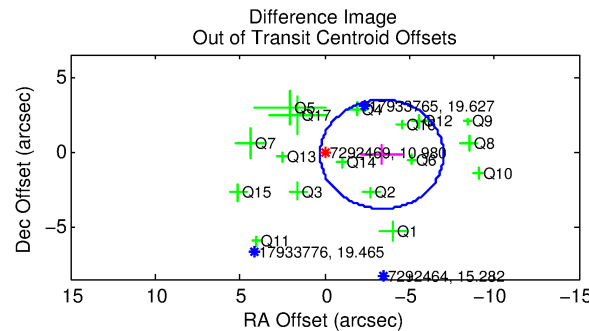
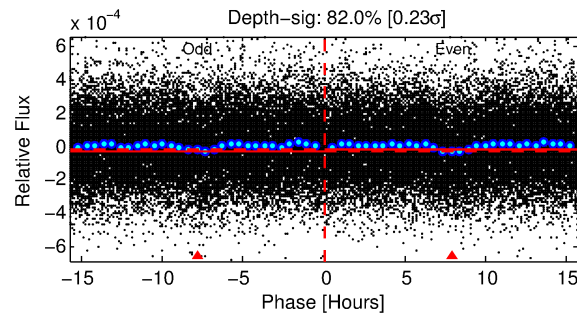
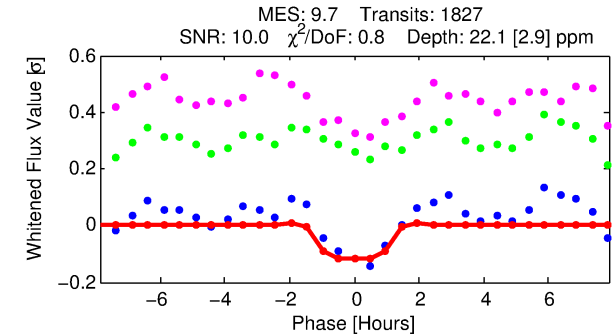
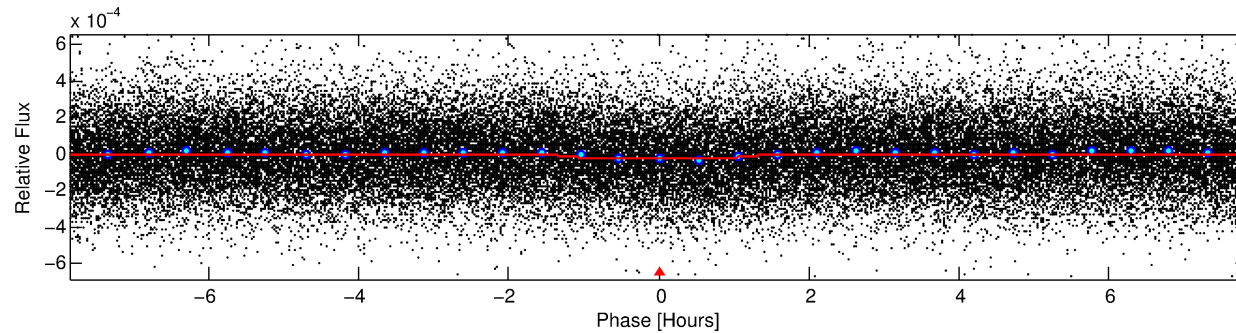
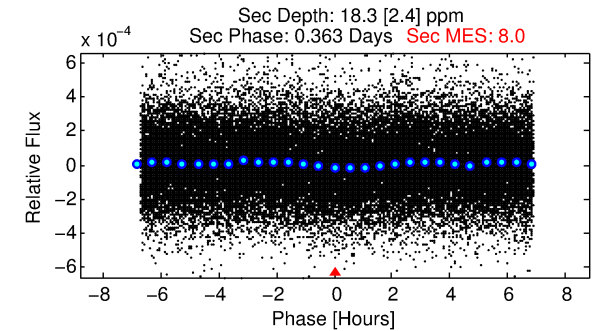
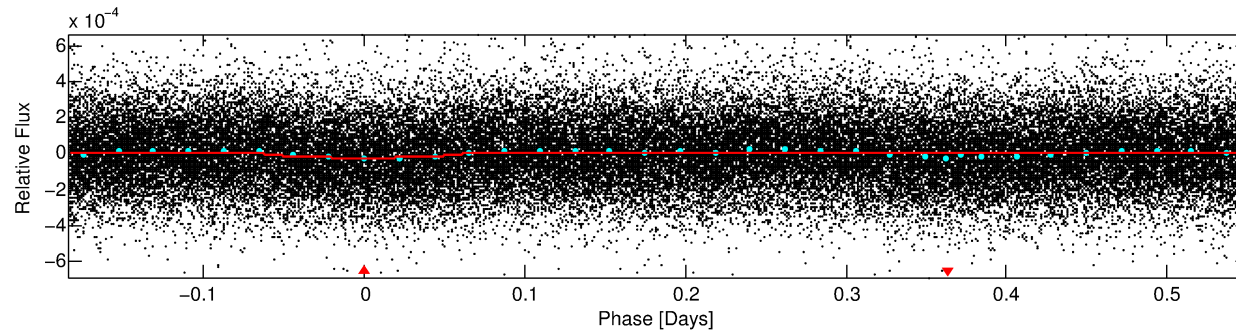
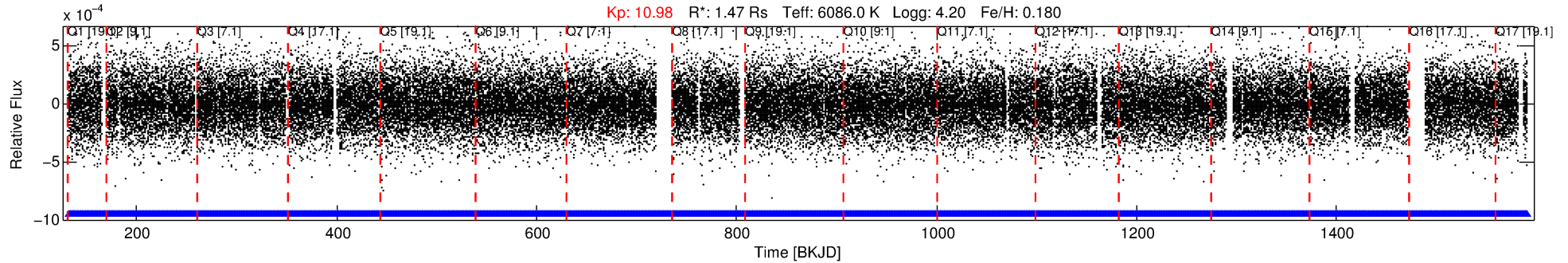
See http://exoplanetarchive.ipac.caltech.edu/docs/API_kepcandidate_columns.html#proj_disp_col for comment definitions.

Ephemeris Match Information For 007292469-01

No Significant Match Found

DV One-Page Summary

KIC: 7292469 Candidate: 1 of 1 Period: 0.734 d



DV Fit Results:

Period = 0.73371 [0.00001] d
Epoch = 132.2242 [0.0033] BKJD
Rp/R* = 0.0051 [0.0023]
a/R* = 1.32 [1.30]
b = 0.91 [0.46]
Seff = 9092.22 [3709.39]
Teff = 2490 [254] K
Rp = 0.82 [0.44] Re
a = 0.0171 [0.0042] AU
Ag = 4.35 [4.28] [0.78σ]
Teffp = 5560 [1286] K [2.34σ]

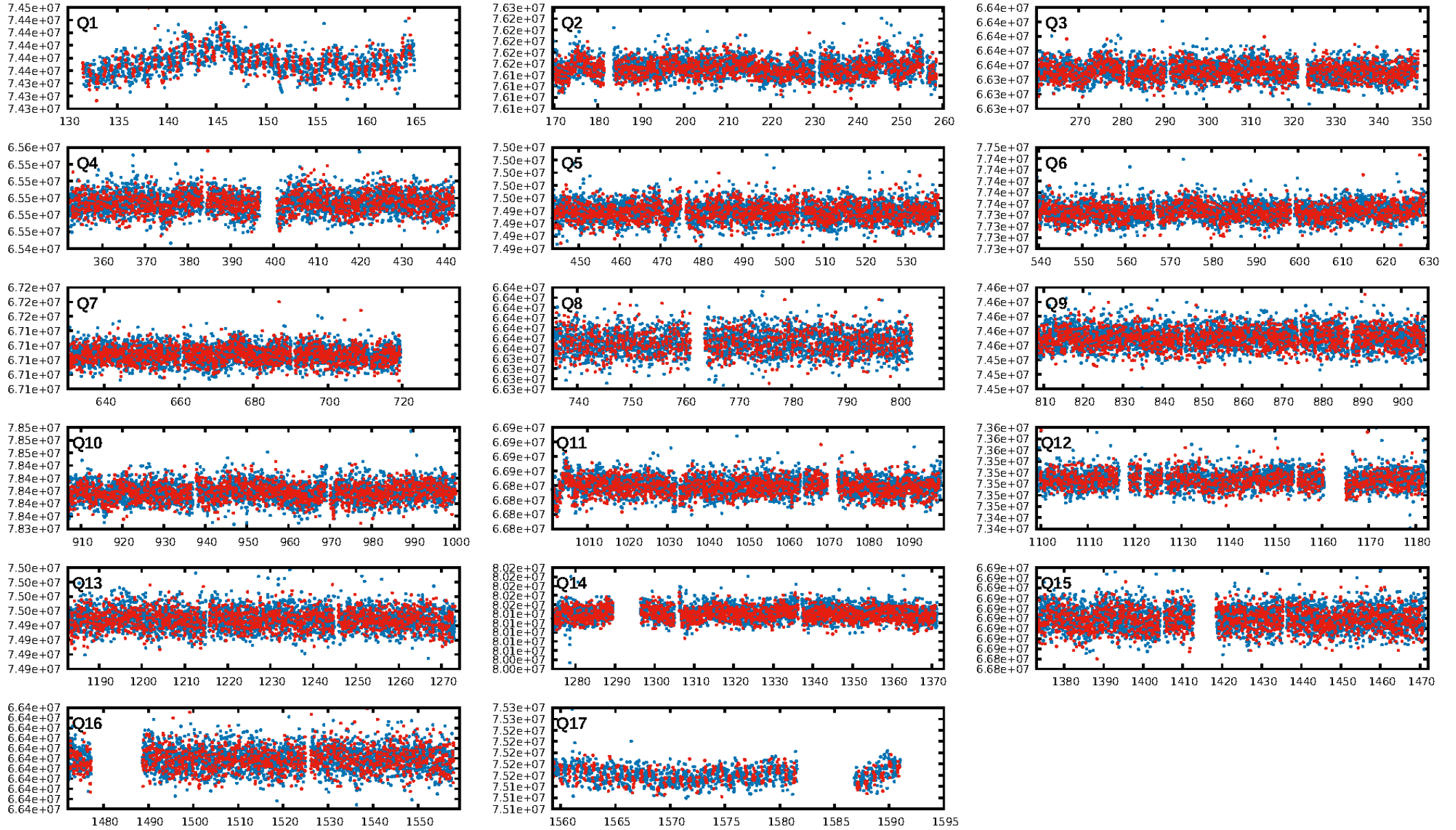
DV Diagnostic Results:

ShortPeriod-sig: N/A
LongPeriod-sig: N/A
ModelChiSquare2-sig: N/A
ModelChiSquareGof-sig: N/A
Bootstrap-pfa: 7.59e-22
RollingBand-fgt: 1.00 [1744/1744]
GhostDiagnostic-chr: 0.06838
Centroid-sig: 0.2%
Centroid-so: 2.082 arcsec [1.25σ]
OotOffset-rm: 3.374 arcsec [2.78σ]
KicOffset-rm: 3.498 arcsec [2.85σ]
OotOffset-st: 4/4/4/5 [17]
KicOffset-st: 4/4/4/5 [17]
DiffImageQuality-fgm: 0.00 [0/17]
DiffImageOverlap-fno: 1.00 [17/17]

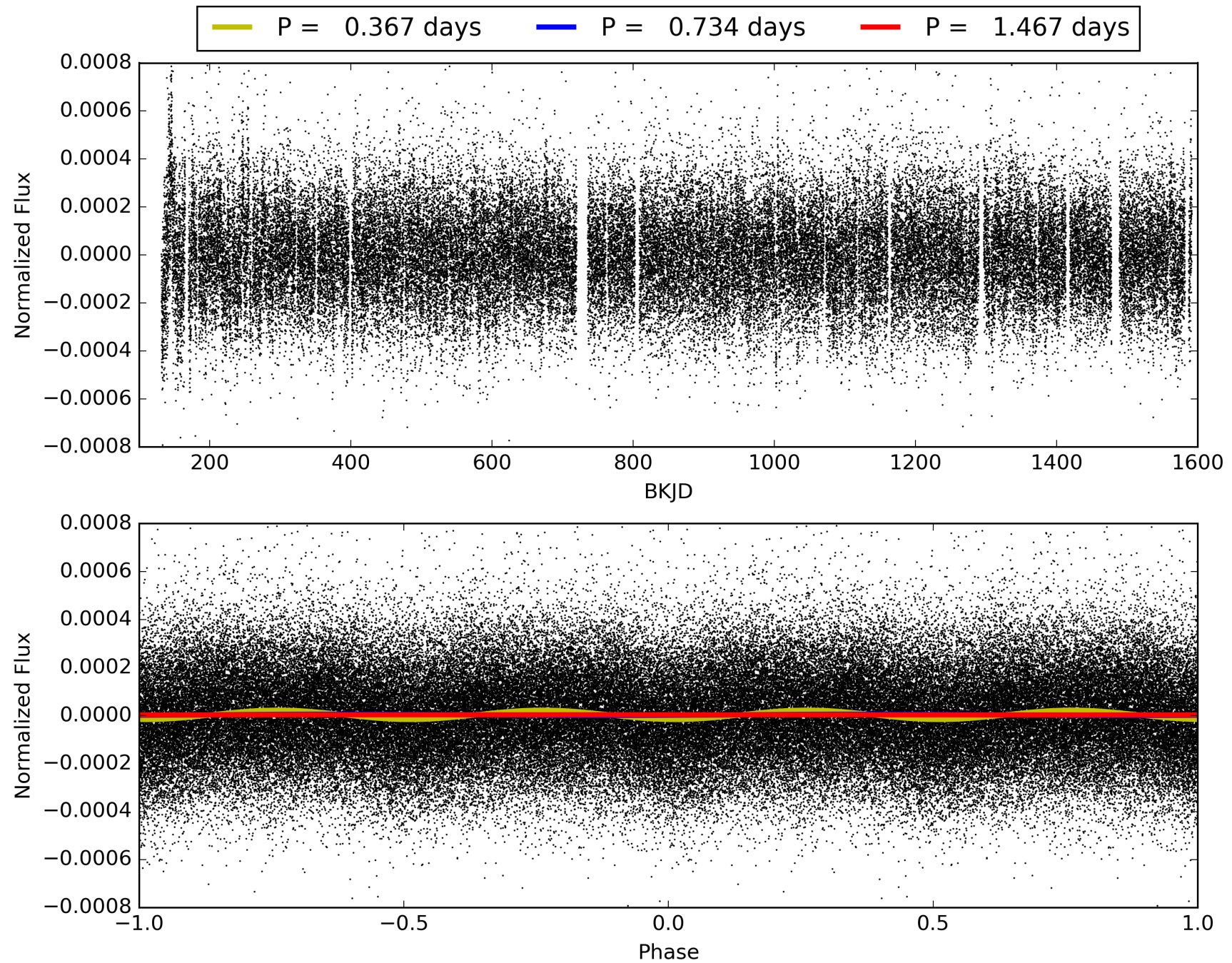
Software Revision: svn+ssh://murzim/repo/soc/tags/release/9.3.42@60958 -- Date Generated: 30-Jan-2016 22:24:14 Z

This Data Validation Report Summary was produced in the Kepler Science Operations Center Pipeline at NASA Ames Research Center

TCE 007292469-01, PDC Light Curves

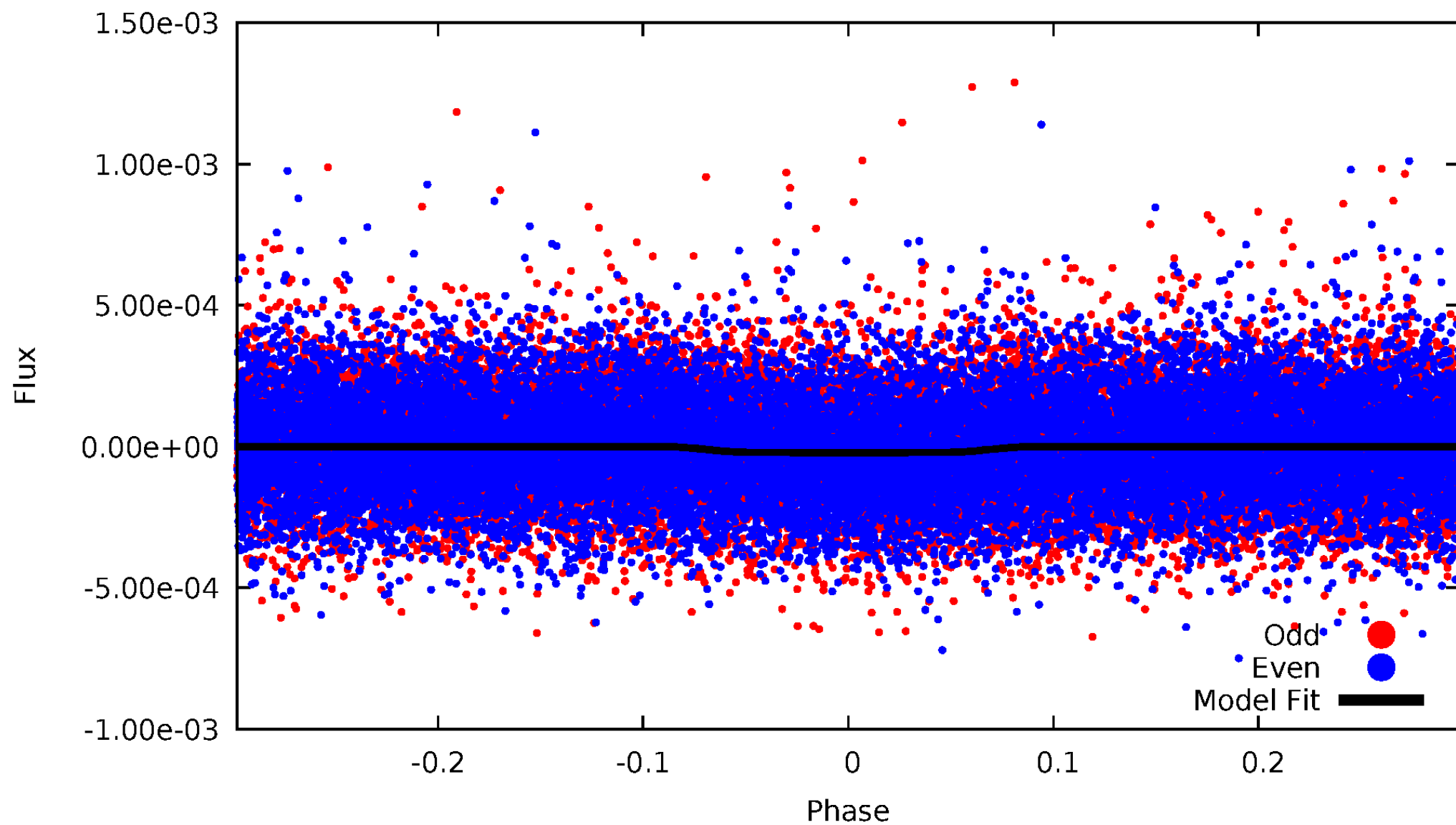


TCE 007292469-01



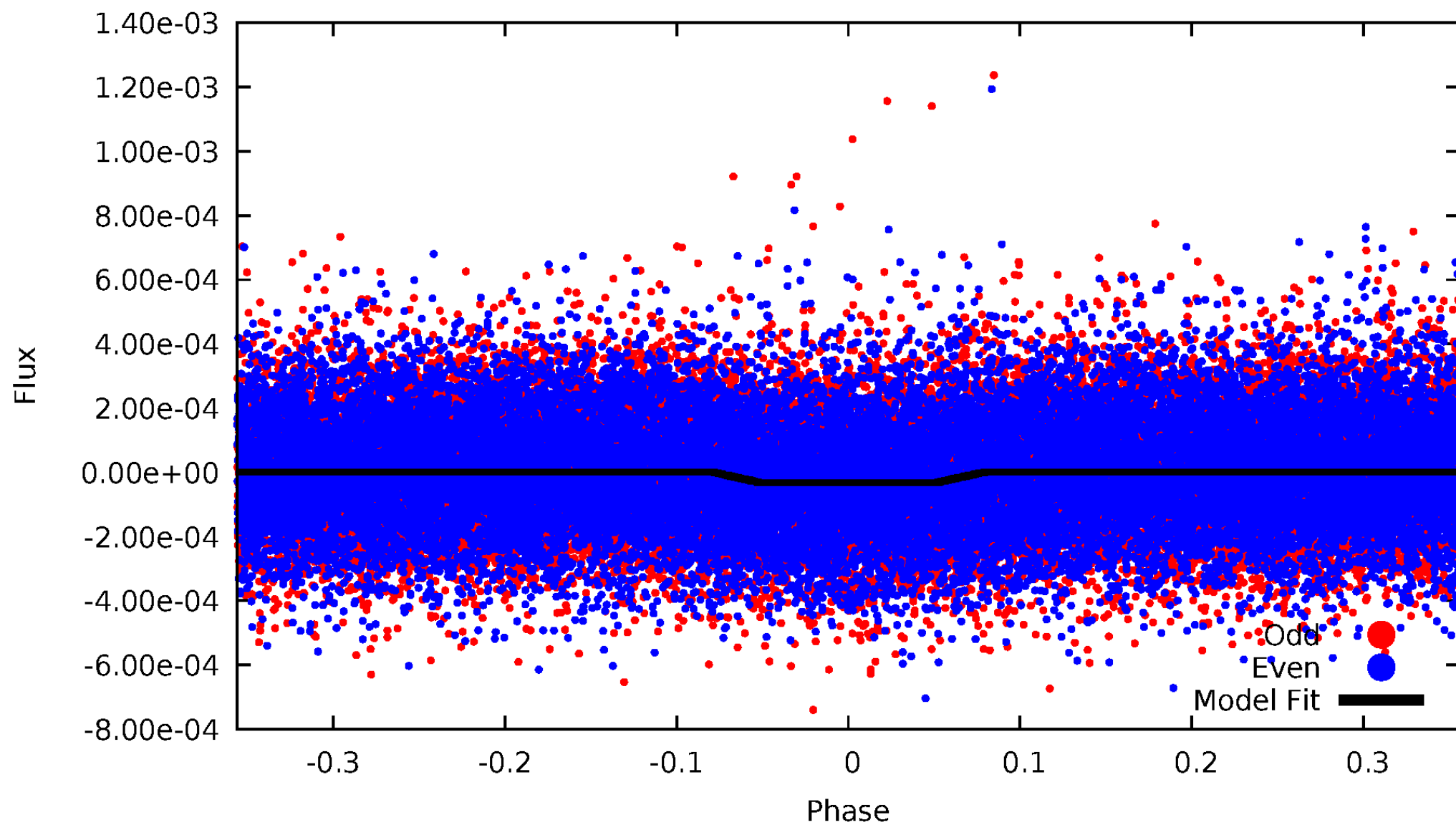
DV Odd/Even

TCE 007292469-01



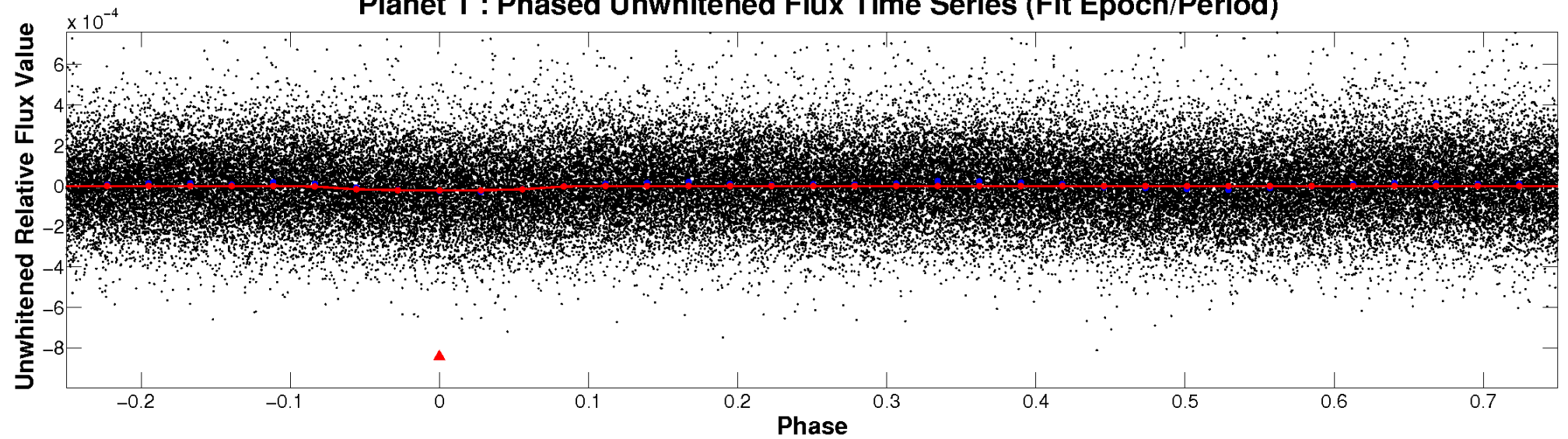
ALT Odd/Even

TCE 007292469-01

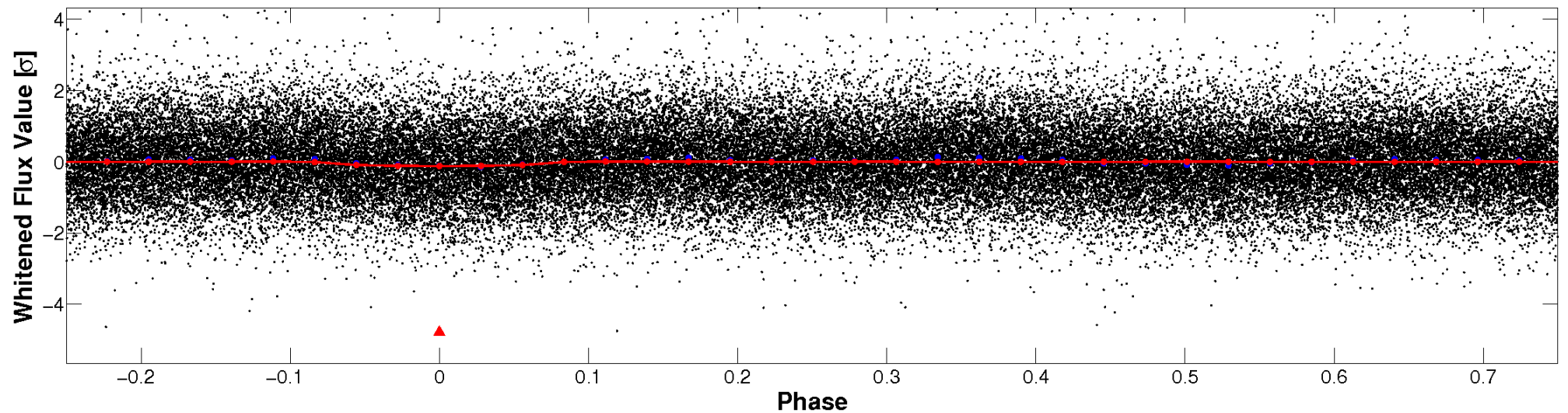


Non-Whitened Vs. Whitened Light Curve

Planet 1 : Phased Unwhitened Flux Time Series (Fit Epoch/Period)

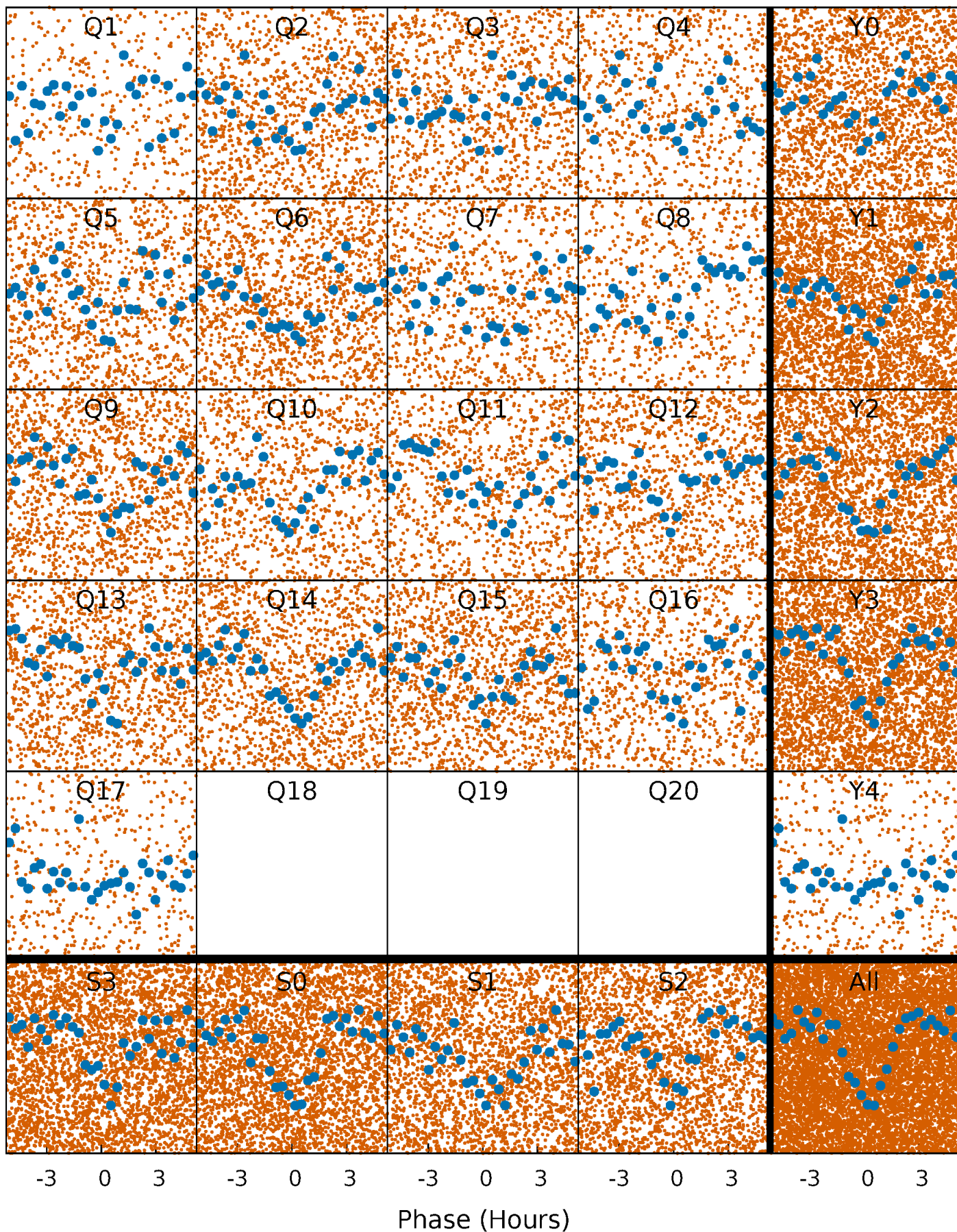


Planet 1 : Phased Whitened Flux Time Series (Fit Epoch/Period)



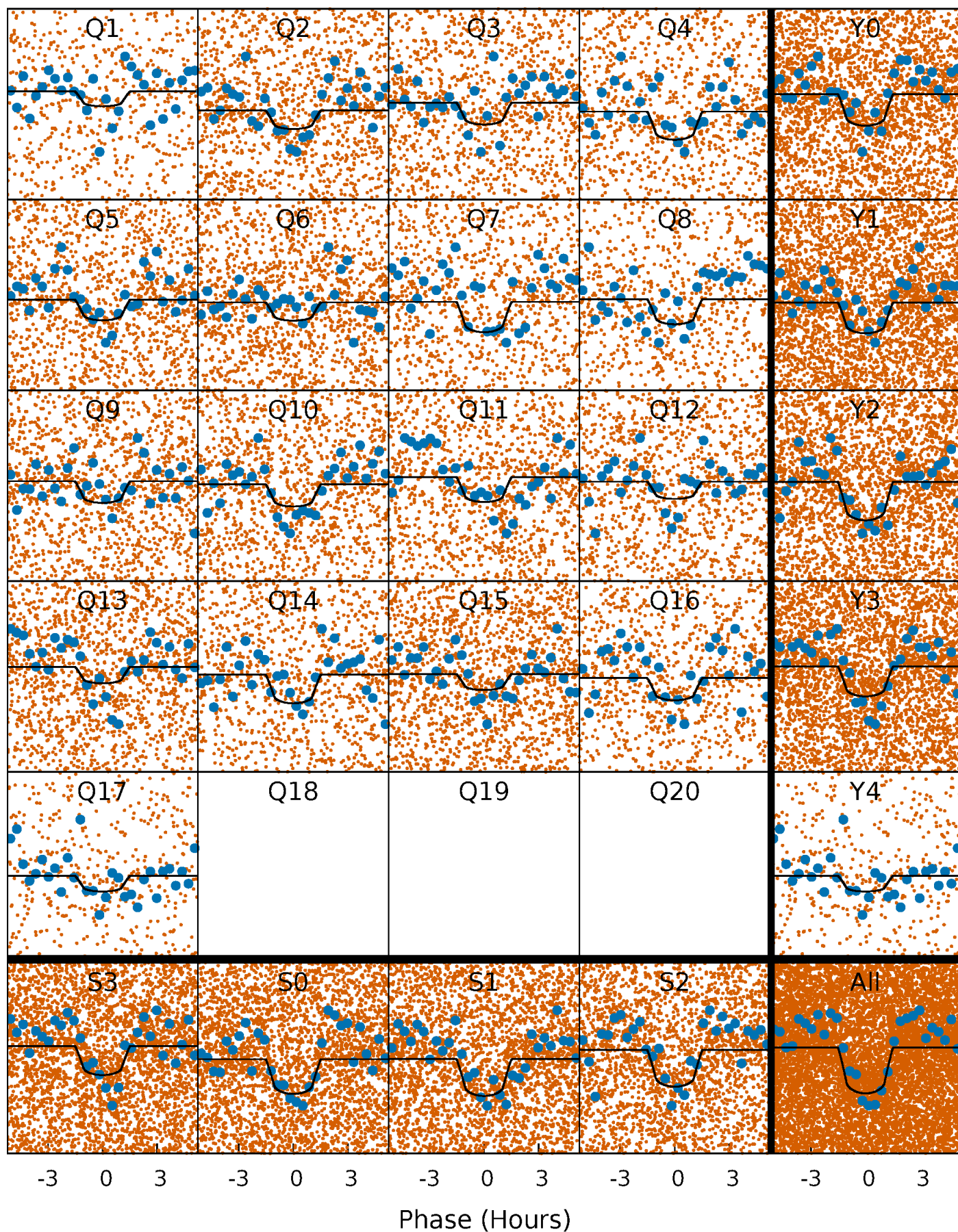
PDC Quarter-Phased Transit Curves

TCE 007292469-01 P= 0.733714 Days $T_0=132.224177$ (BKJD)



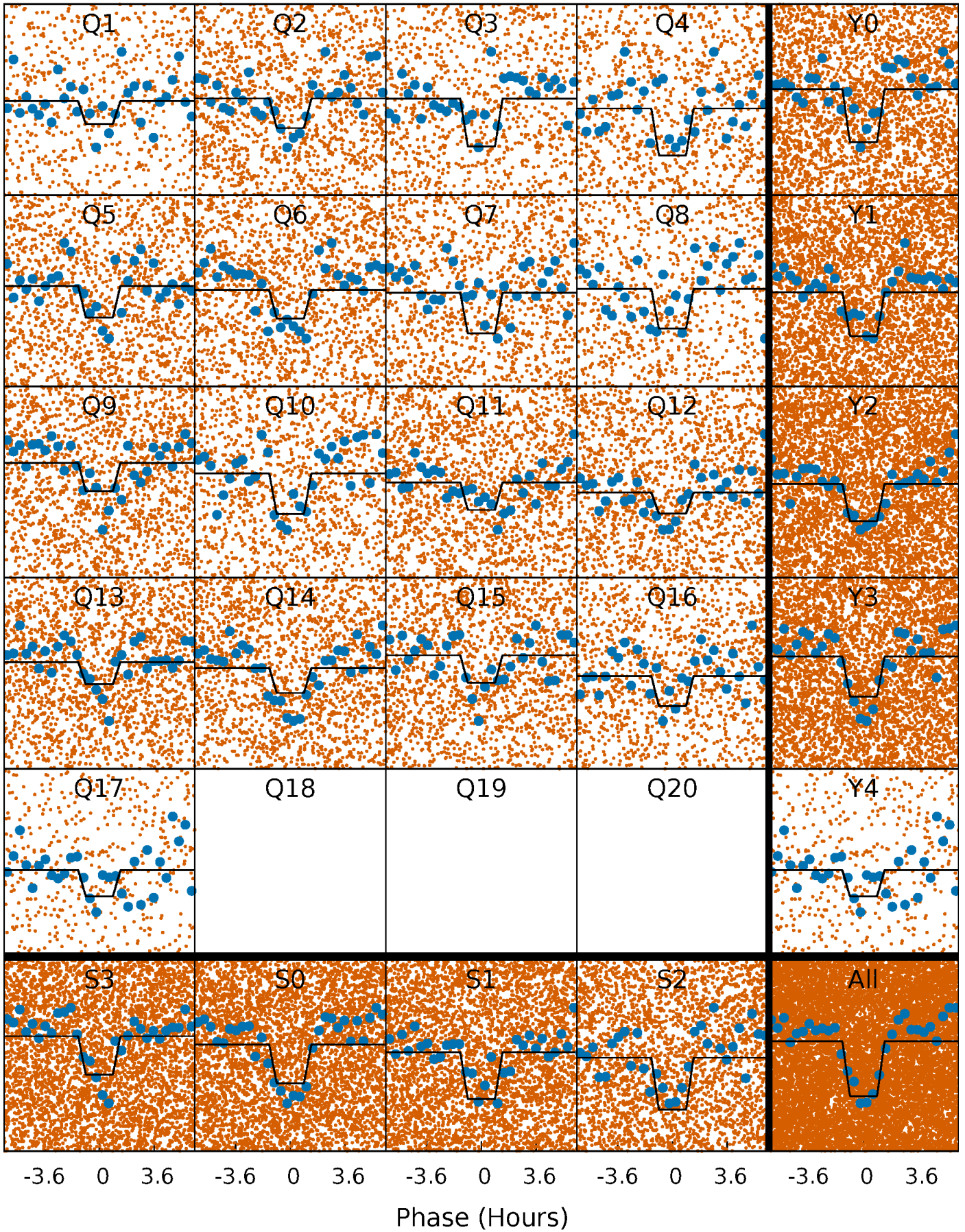
DV Quarter-Phased Transit Curves

TCE 007292469-01 P= 0.733714 Days $T_0=132.224177$ (BKJD)



Alt. Detrend Quarter-Phased Transit Curves

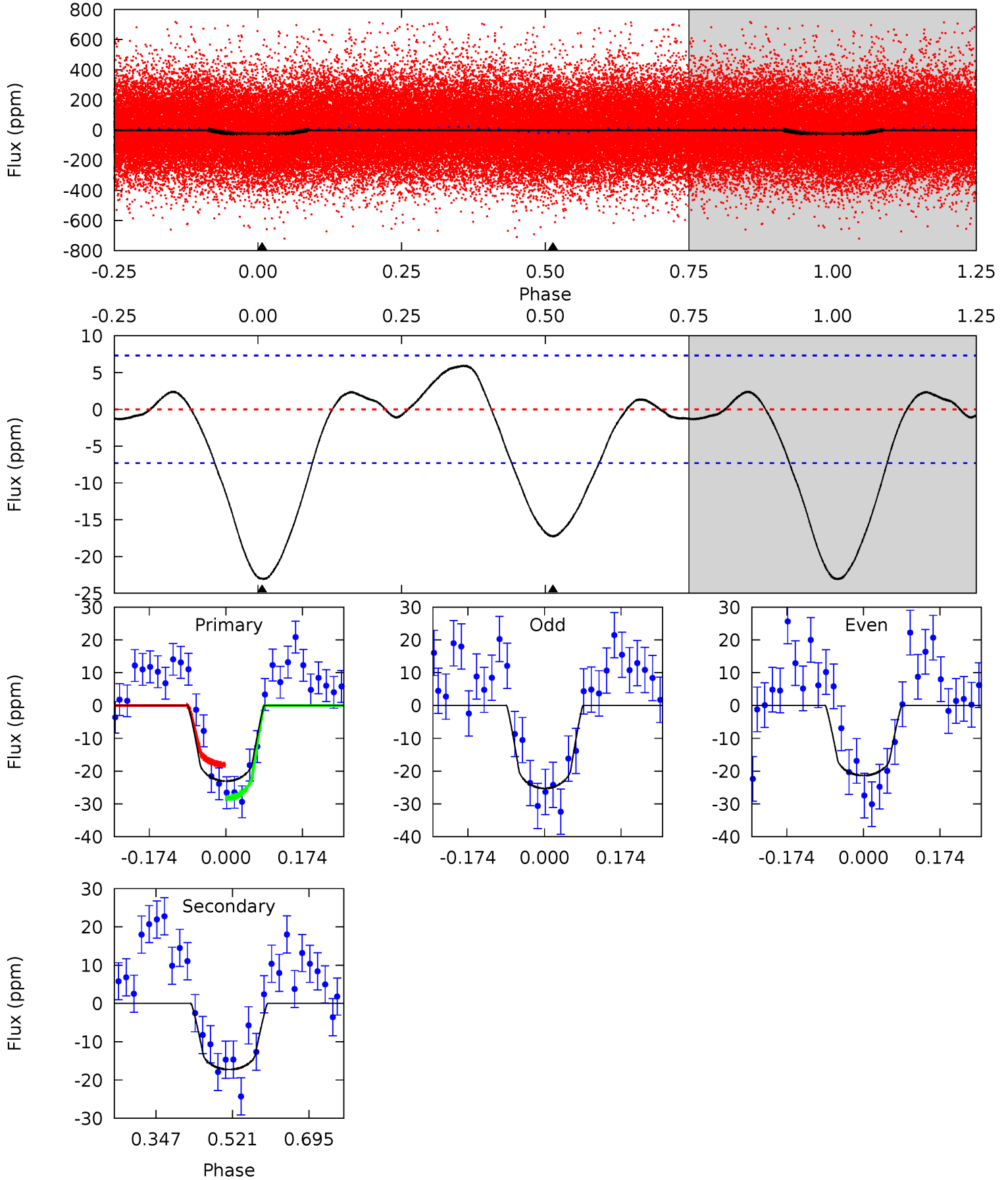
TCE 007292469-01 P= 0.733722 Days $T_0=132.221393$ (BKJD)



DV Model-Shift Uniqueness Test

007292469-01, P = 0.733714 Days, E = 131.490463 Days

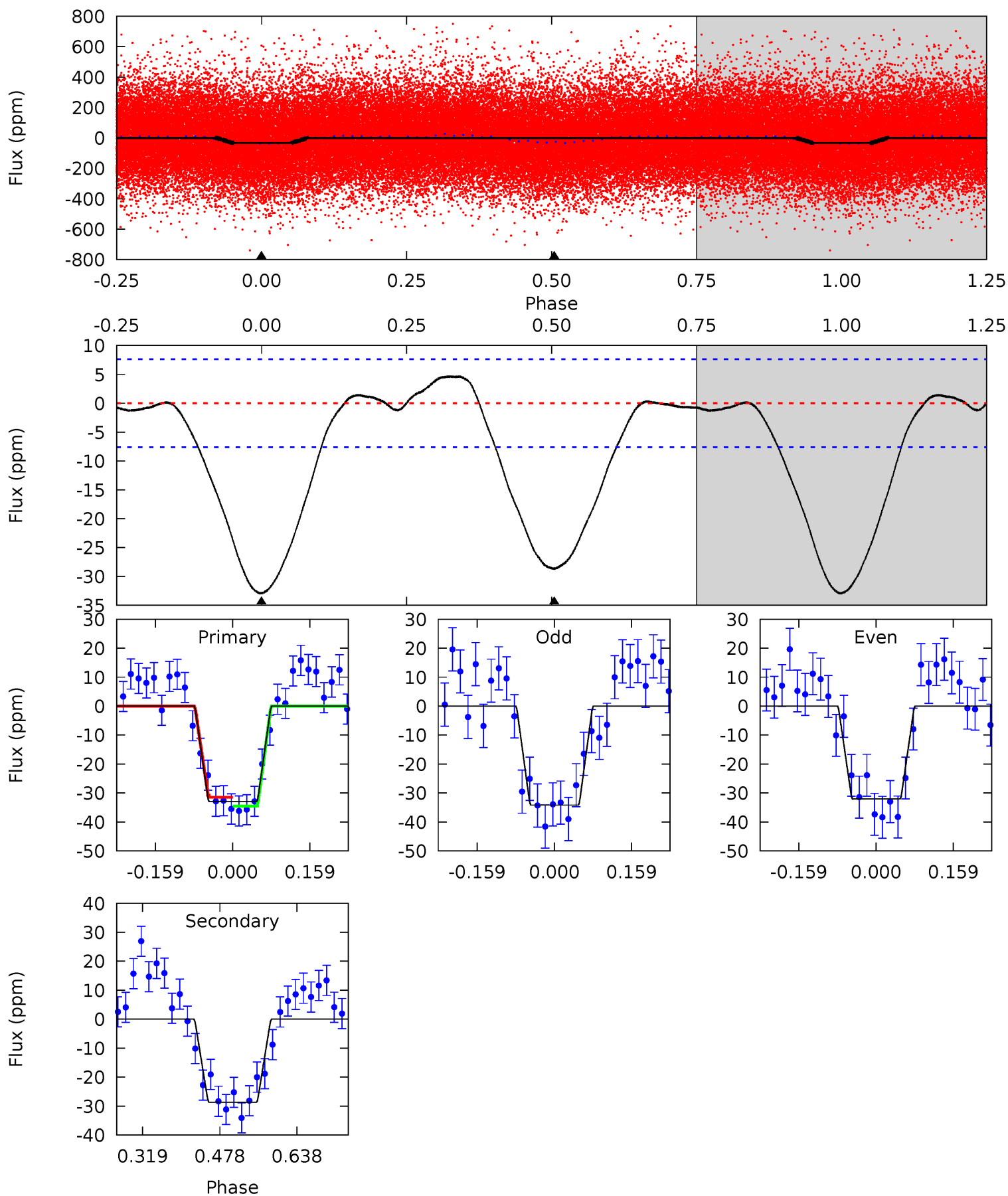
Pri	Sec	Ter	Pos	FA ₁	FA ₂	F _{Red}	Pri-Ter	Pri-Pos	Sec-Ter	Sec-Pos	Odd-Evn	DMM	Shape	TAT
14.0	10.5	0	0	4.45	1.36	1.16	14.0	14.0	10.5	10.5	1.20	1.01	0.20	3.12



Alt Model-Shift Uniqueness Test

007292469-01, P = 0.733722 Days, E = 131.487671 Days

Pri	Sec	Ter	Pos	FA ₁	FA ₂	F _{Red}	Pri-Ter	Pri-Pos	Sec-Ter	Sec-Pos	Odd-Evn	DMM	Shape	TAT
19.3	16.8	0	0	4.47	1.41	1.06	19.3	19.3	16.8	16.8	0.62	0.99	0.12	0.89



Stellar Parameters For KIC 007292469

	$T_{\text{eff}} (K)$	$\log(g)$	$[\text{Fe}/\text{H}]$	$R (R_{\odot})$	$M (M_{\odot})$	$\rho_{\star} (\text{g}\cdot\text{cm}^{-3})$
	6086^{+190}_{-253}	$4.195^{+0.209}_{-0.190}$	$0.180^{+0.200}_{-0.300}$	$1.468^{+0.417}_{-0.375}$	$1.236^{+0.159}_{-0.211}$	$0.550^{+0.587}_{-0.288}$
	+3%/-4%	+5%/-5%	+111%/-167%	+28%/-26%	+13%/-17%	+107%/-52%
Source	PHO54	PHO54	PHO54	DSEP		

KIC = Kepler Input Catalog; PHO = Photometry; SPE = Spectroscopy; AST = Asteroseismology
 TRA = Transits; DESP = Dartmouth Models; MULT = Multiple Models

Secondary Eclipse Parameters for KIC 007292469-01 / KOI

Detrend	Depth (ppm)	$R_p (R_{\oplus})$	$T_{\text{max}} (K)$	$T_{\text{obs}} (K)$	A_{obs}
DV	-17 ± 2	$0.84^{+0.43}_{-0.38}$	3463^{+283}_{-268}	5289^{+1990}_{-844}	$3.830^{+9.322}_{-2.098}$
Alt.	-29 ± 2	$0.90^{+0.43}_{-0.38}$	3481^{+283}_{-271}	5830^{+1900}_{-924}	$5.625^{+10.852}_{-3.045}$

T_{max} = Theoretical Maximum Planetary Temperature

T_{obs} = Observed Planetary Temperature (Assuming $A=0.3$)

A_{obs} = Observed Albedo (Assuming $T=0$)

If a secondary eclipse is present, the system is likely an EB if $T_{\text{obs}} \gg T_{\text{max}}$ AND $A_{\text{obs}} \gg 1.0$

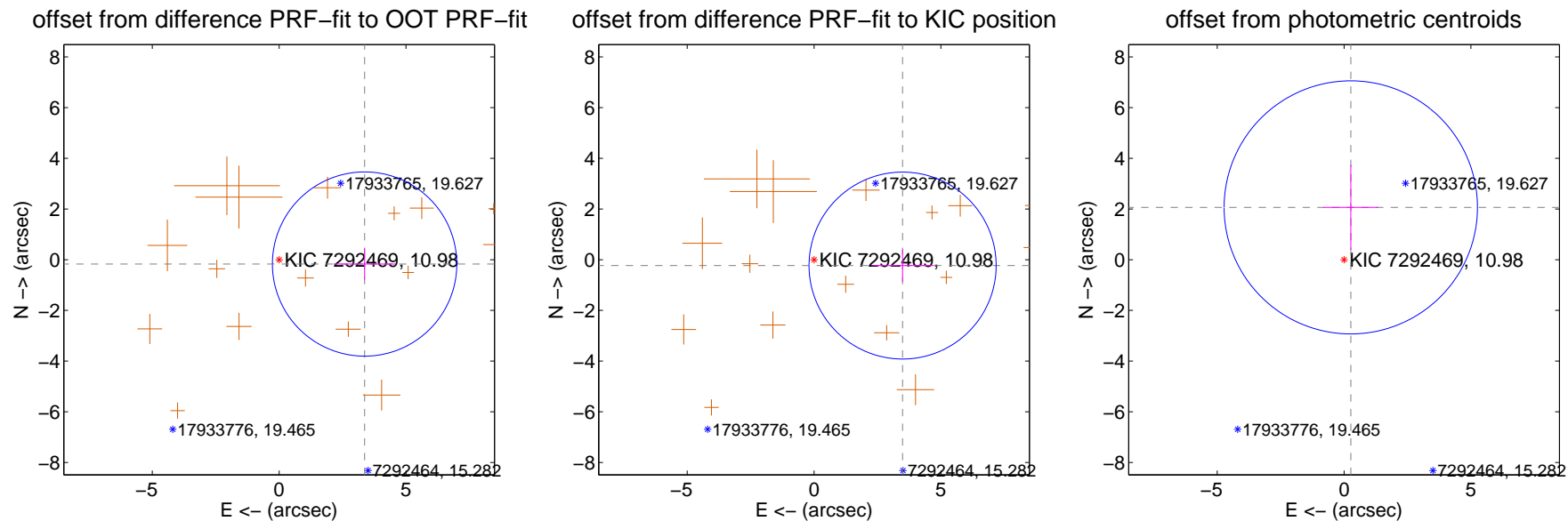
DV Centroid Data

Supplemental centroid analysis for 007292469-01. **Kepler magnitude: 10.98.** Transit SNR 9.96

There are 0 quarters with good PRF difference image offsets

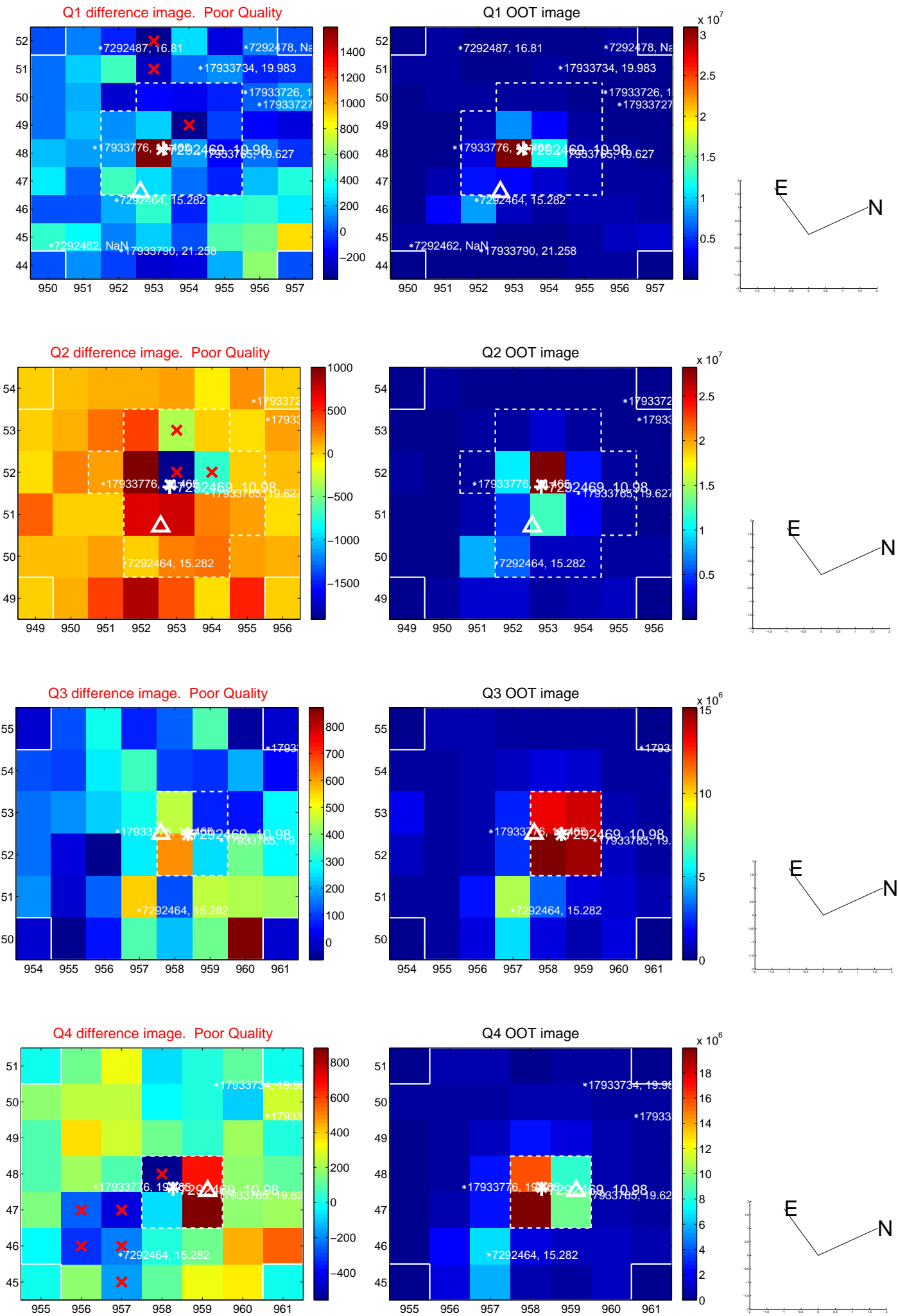
The direct PRF centroid is offset from the target star catalog position by about 0.22 arcsec

	Distance in arcsec	Distance / σ	Δ RA	Δ Dec
PRF-fit source offset from OOT	3.374 ± 1.211	2.78	-3.369 ± 1.213	-0.171 ± 0.619
PRF-fit source offset from KIC position	3.498 ± 1.229	2.85	-3.491 ± 1.231	-0.231 ± 0.640
photometric centroid source offset	2.08 ± 1.66	1.25	-0.27 ± 1.08	2.06 ± 1.67

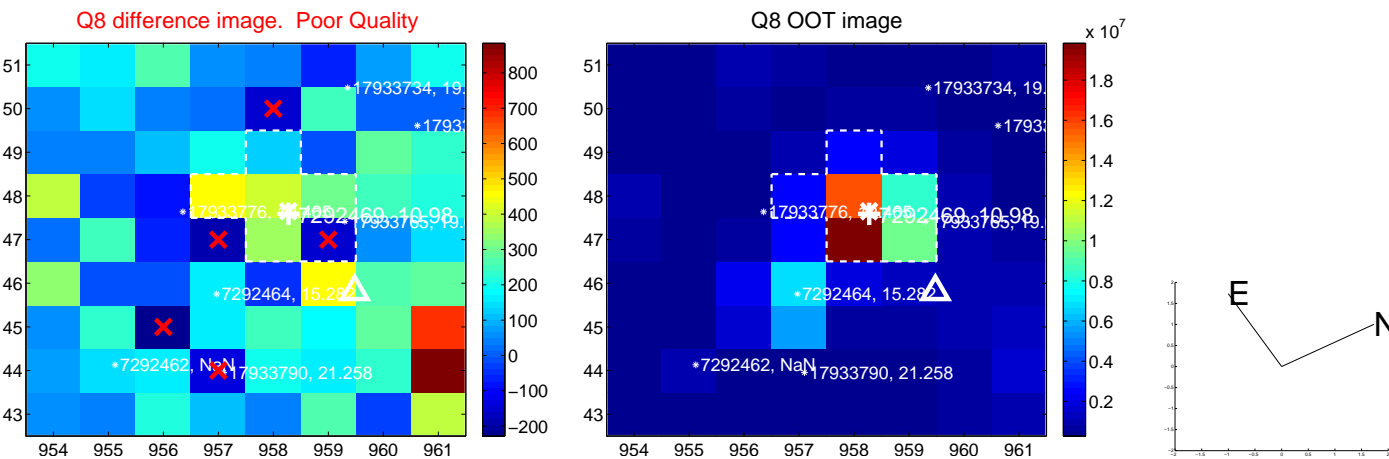
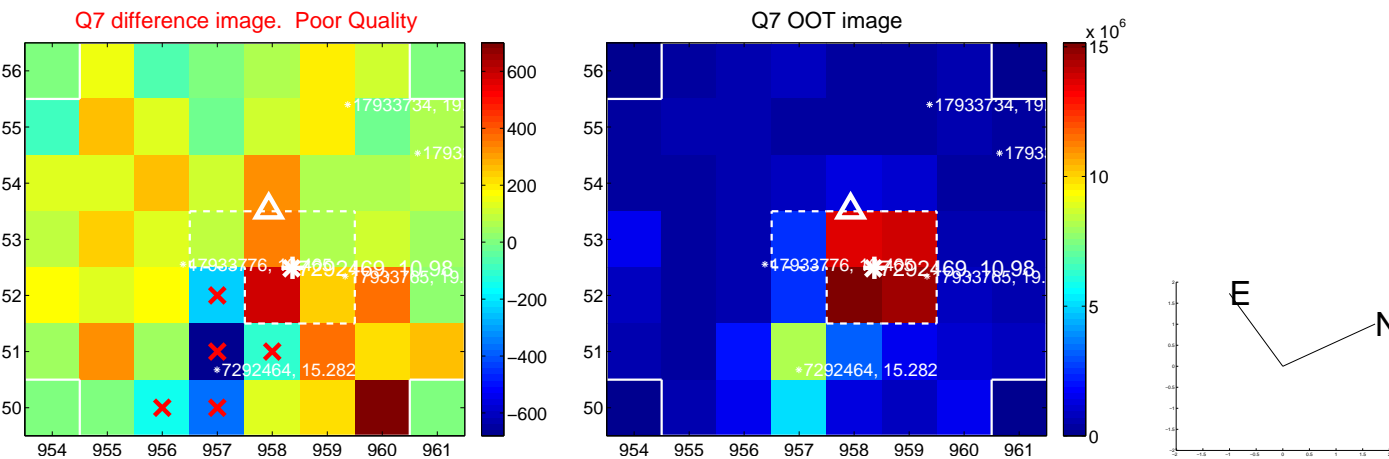
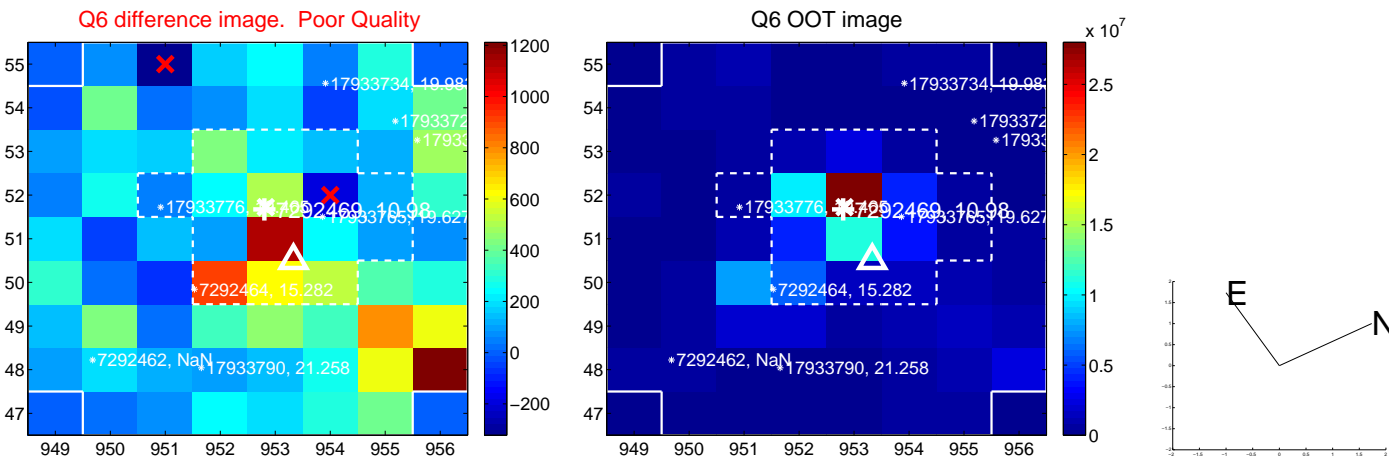
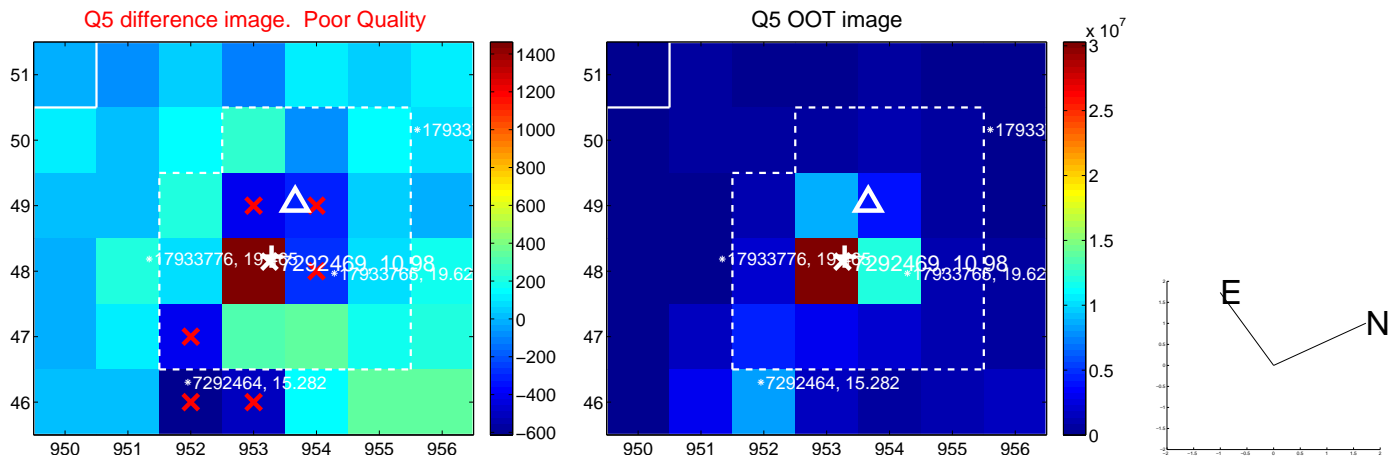


Centroid source offsets from the target star reconstructed from PRF and photometric centroids. **Sky blue crosses: good quarterly centroid offsets; Vermillion crosses: bad quarterly centroid offsets;** magenta cross: average over quarters. Length of the crosses: one- σ uncertainty. Blue circle: three- σ . Red *: target star. Blue *: Other stars. Text next to a star gives its KIC ID and kepmag. KIC IDs > 15,000,000 are from the UKIRT catalog.

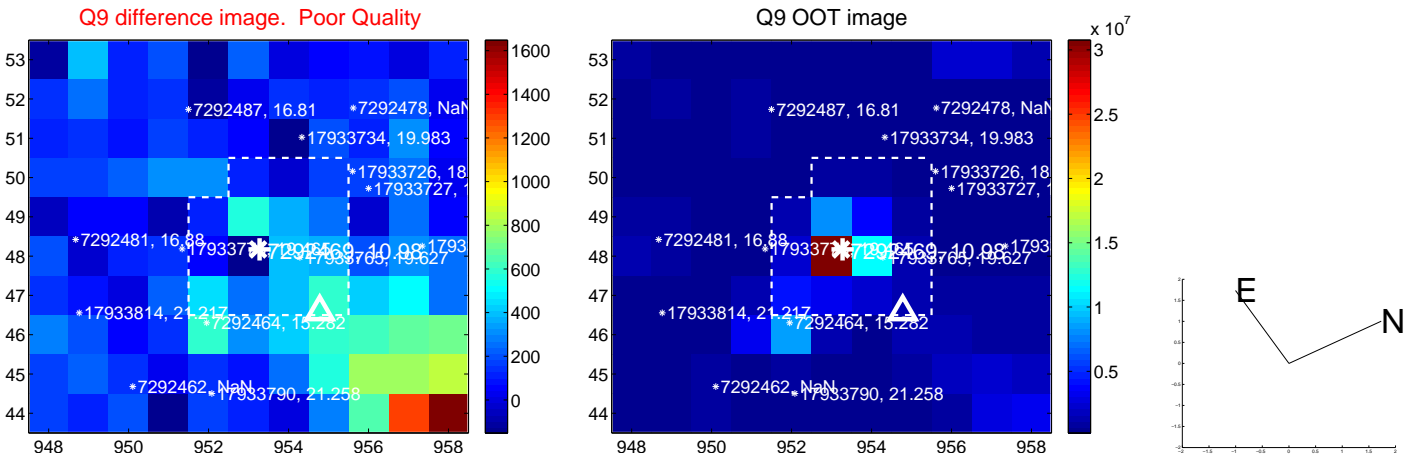
white \times : KIC target position; +: OOT centroid; \triangle : difference centroid. red \times : large negative pixel value.



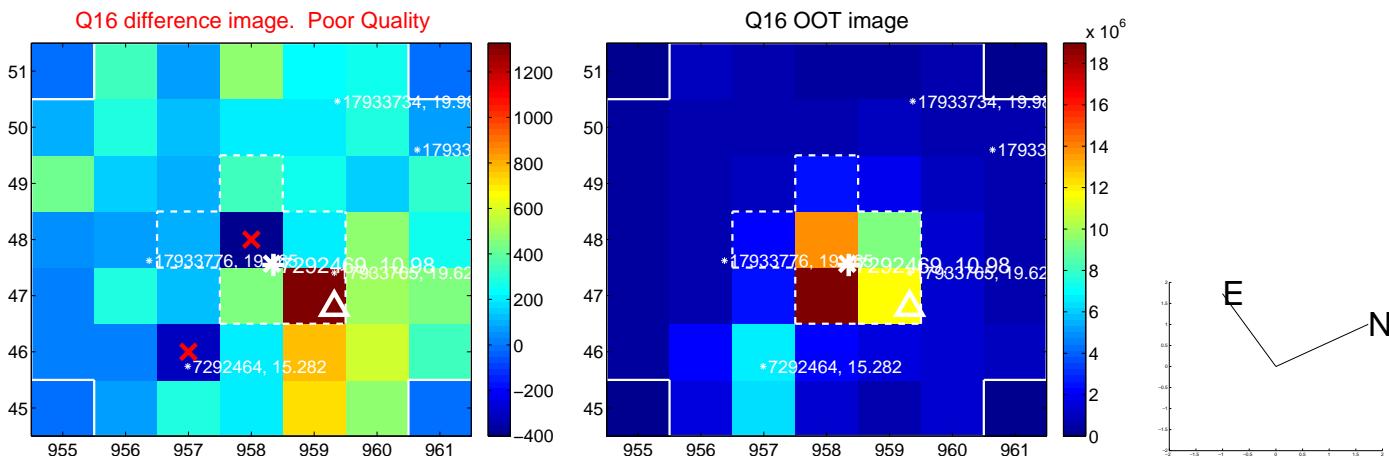
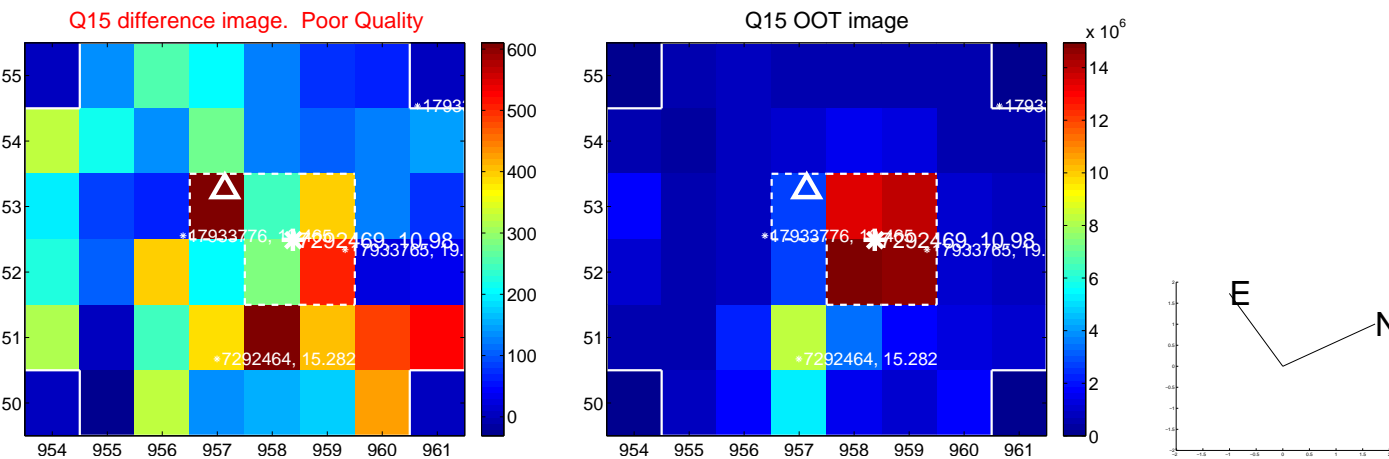
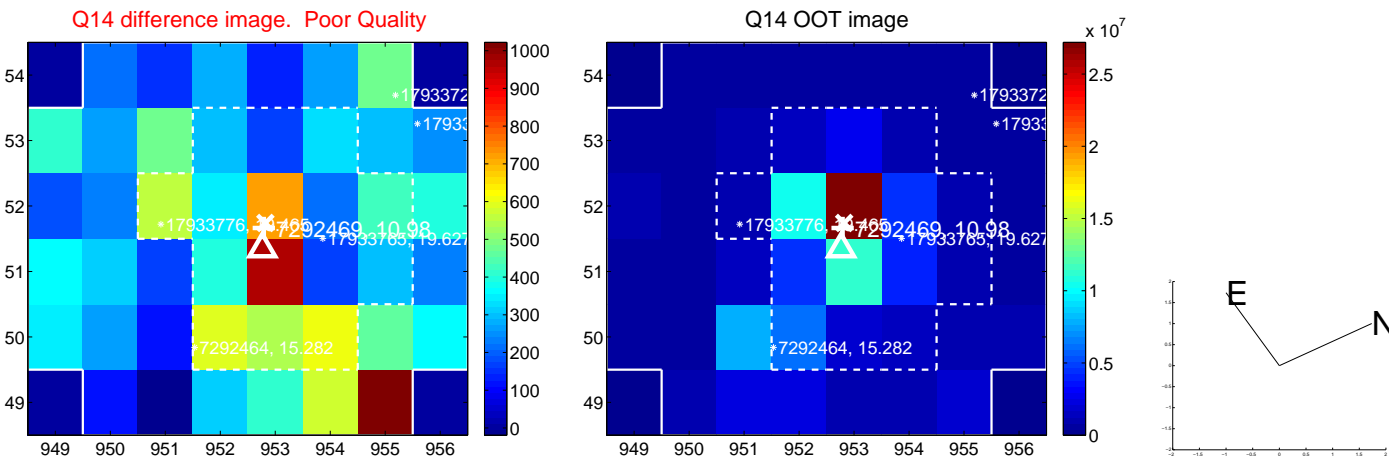
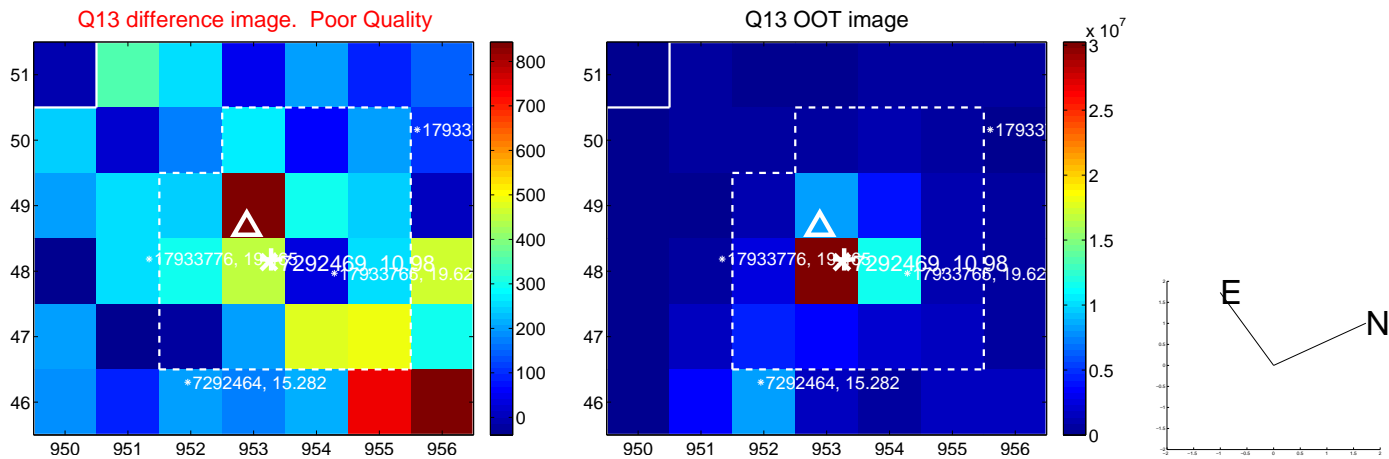
white \times : KIC target position; $+$: OOT centroid; \triangle : difference centroid. red \times : large negative pixel value.



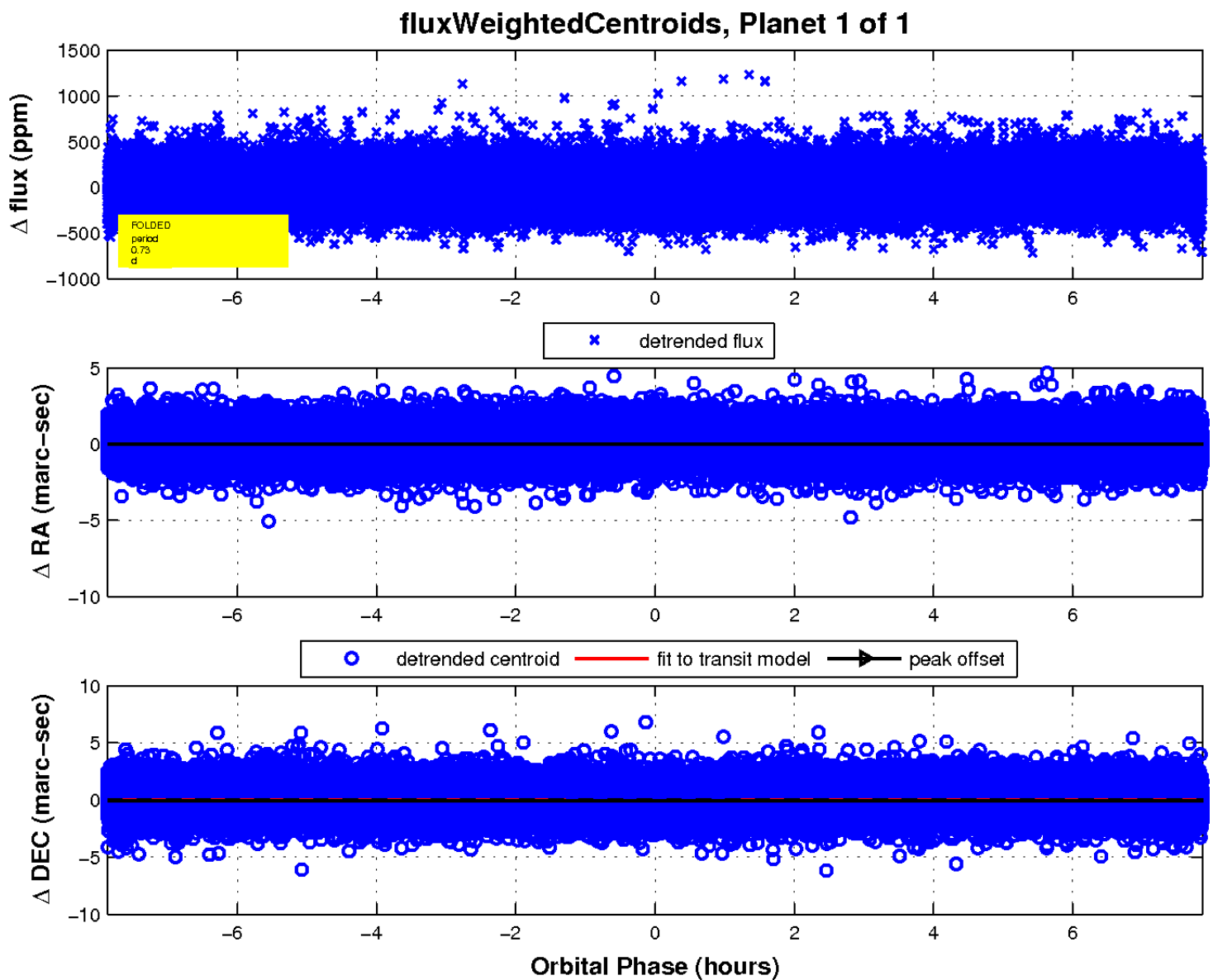
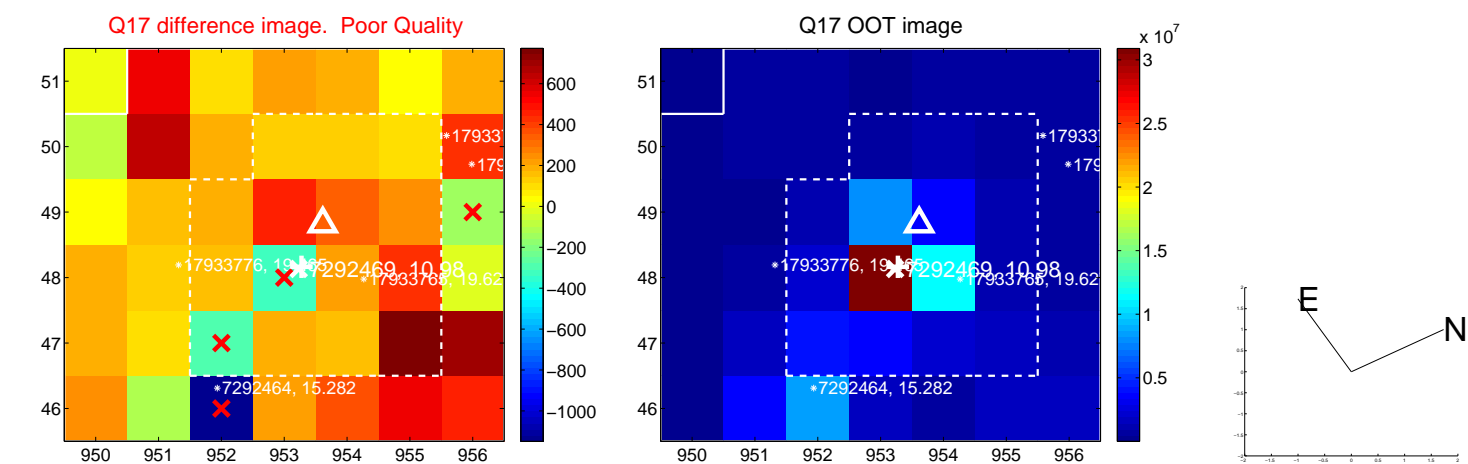
white \times : KIC target position; $+$: OOT centroid; \triangle : difference centroid. red \times : large negative pixel value.



white \times : KIC target position; +: OOT centroid; \triangle : difference centroid. red \times : large negative pixel value.



white \times : KIC target position; $+$: OOT centroid; \triangle : difference centroid. red \times : large negative pixel value.



UKIRT Image

Declination

