

KIC 007203179

Q1-17 DR25 TCE Parameters

TCE	Run Type	KOI?	Period (Days)	Epoch (BKJD)	Depth (ppm)	Duration (Hours)	MES	SNR	R_{\star} (R_{\odot})	T_{\star} (K)	R_p (R_{\oplus})	S_p (S_{\oplus})
007203179-01	OBS	6845.01	2.245746	133.268280	57509.9	3.500	9708.4	-1.0	1.31	6508	31.73	2155.23

Robovetter Results

TCE	Run Type	Disp	Score	N	S	C	E	Comments
007203179-01	OBS	FP	0.00	1	0	0	0	LPP_DV—CENT_NOFITS

Notes: OBS = Observed. INJ = Injected. INV = Inverted. SCR = Scrambled.

N = Not Transit-Like. S = Stellar Eclipse. C = Centroid Offset. E = Ephemeris Match.

See http://exoplanetarchive.ipac.caltech.edu/docs/API_kepcandidate_columns.html#proj_disp_col for comment definitions.

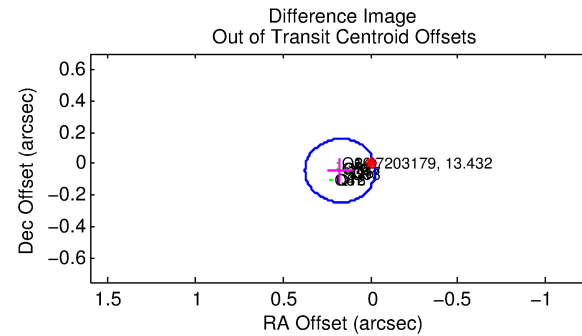
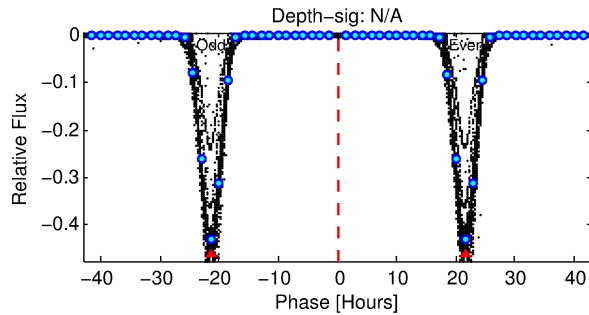
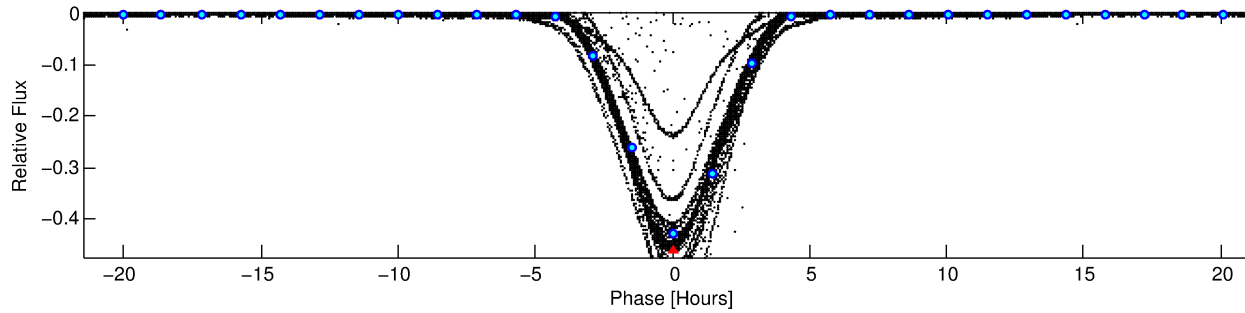
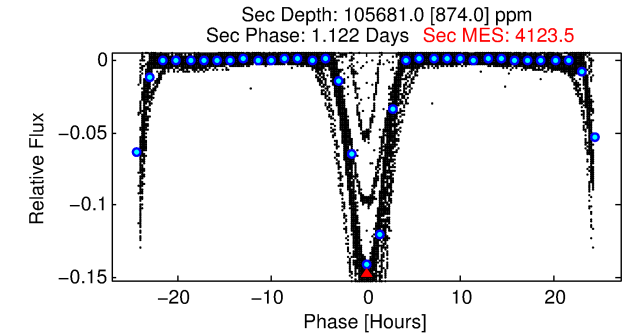
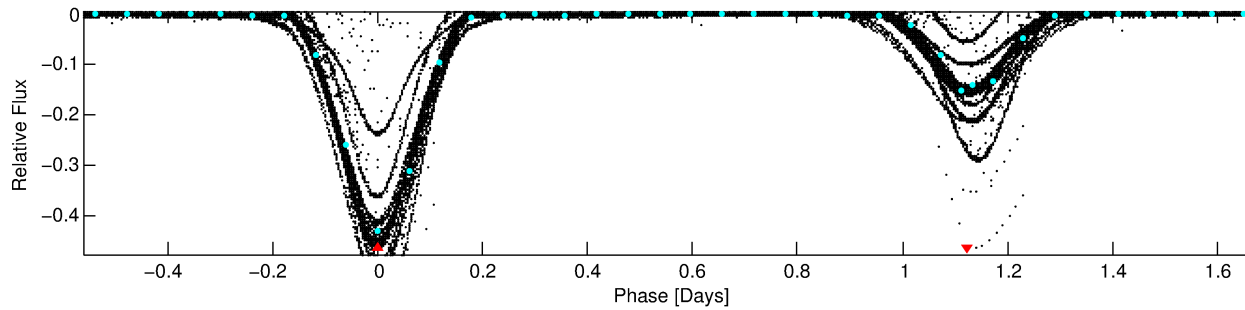
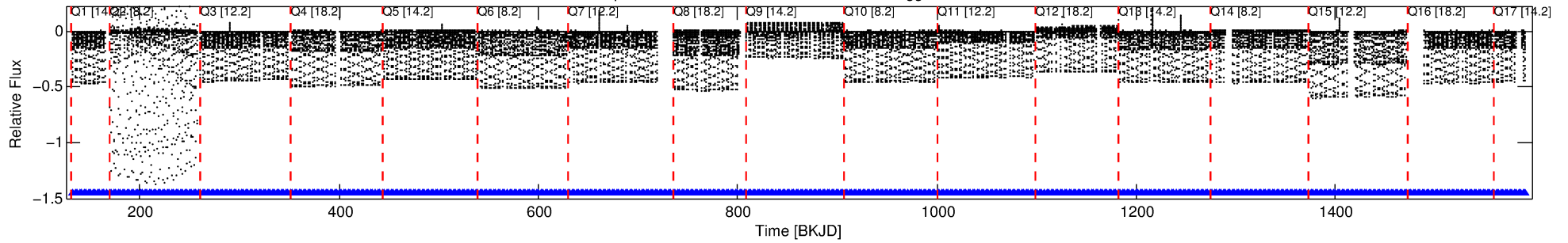
Ephemeris Match Information For 007203179-01

No Significant Match Found

DV One-Page Summary

KIC: 7203179 Candidate: 1 of 1 Period: 2.246 d
KOI: K06845 Corr: No Ephemeris Match

Kp: 13.43 R*: 1.31 Rs Teff: 6508.0 K Logg: 4.29 Fe/H: -0.060



TPS TCE Results:

Period = 2.24575 d
Epoch = 133.2683 BKJD

DV fit results are unavailable

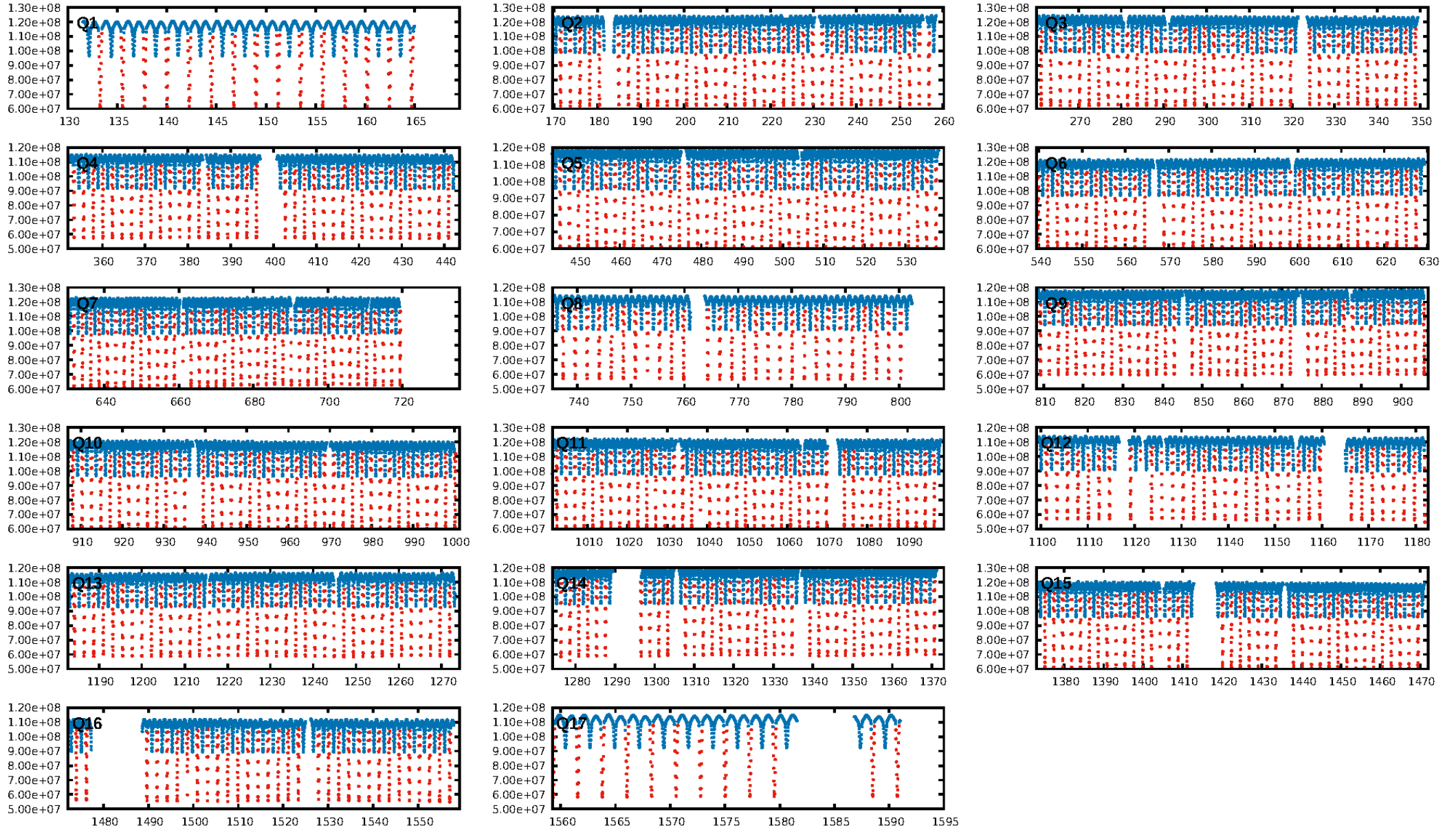
DV Diagnostic Results:

ShortPeriod-sig: N/A
LongPeriod-sig: N/A
ModelChiSquare2-sig: N/A
ModelChiSquareGof-sig: N/A
Bootstrap-pfa: N/A
RollingBand-fgt: 1.00 [571/571]
GhostDiagnostic-chr: 1.061
Centroid-sig: 0.0%
Centroid-so: 0.223 arcsec [847.34σ]
OotOffset-rm: 0.177 arcsec [2.64σ]
KicOffset-rm: 0.054 arcsec [0.81σ]
OotOffset-st: 4/4/4/5 [17]
KicOffset-st: 4/4/4/5 [17]
DiffImageQuality-fgm: 1.00 [17/17]
DiffImageOverlap-fno: 1.00 [17/17]

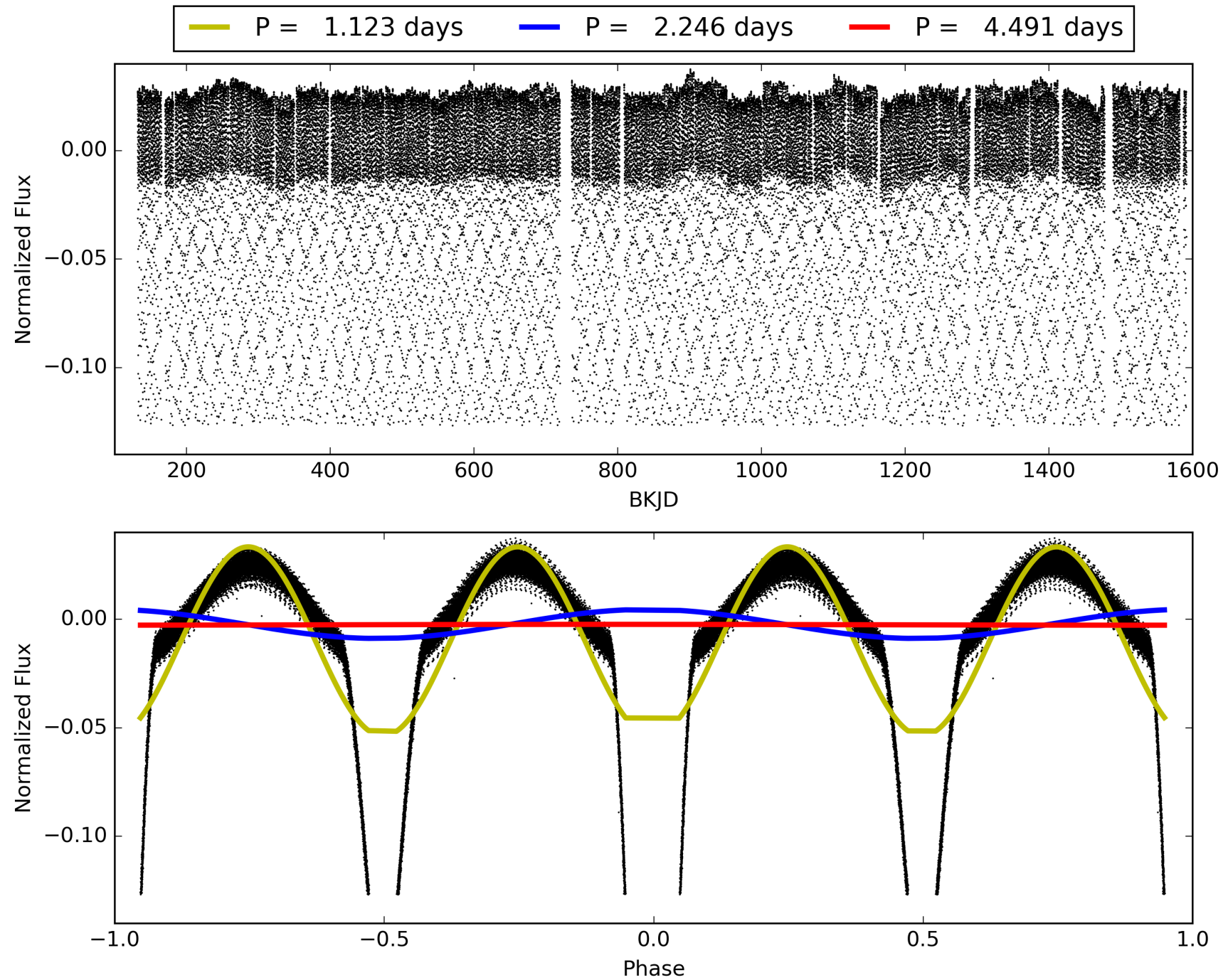
Software Revision: svn+ssh://murzim/repo/soc/tags/release/9.3.42@60958 -- Date Generated: 01-Feb-2016 13:59:22 Z

This Data Validation Report Summary was produced in the Kepler Science Operations Center Pipeline at NASA Ames Research Center

TCE 007203179-01, PDC Light Curves

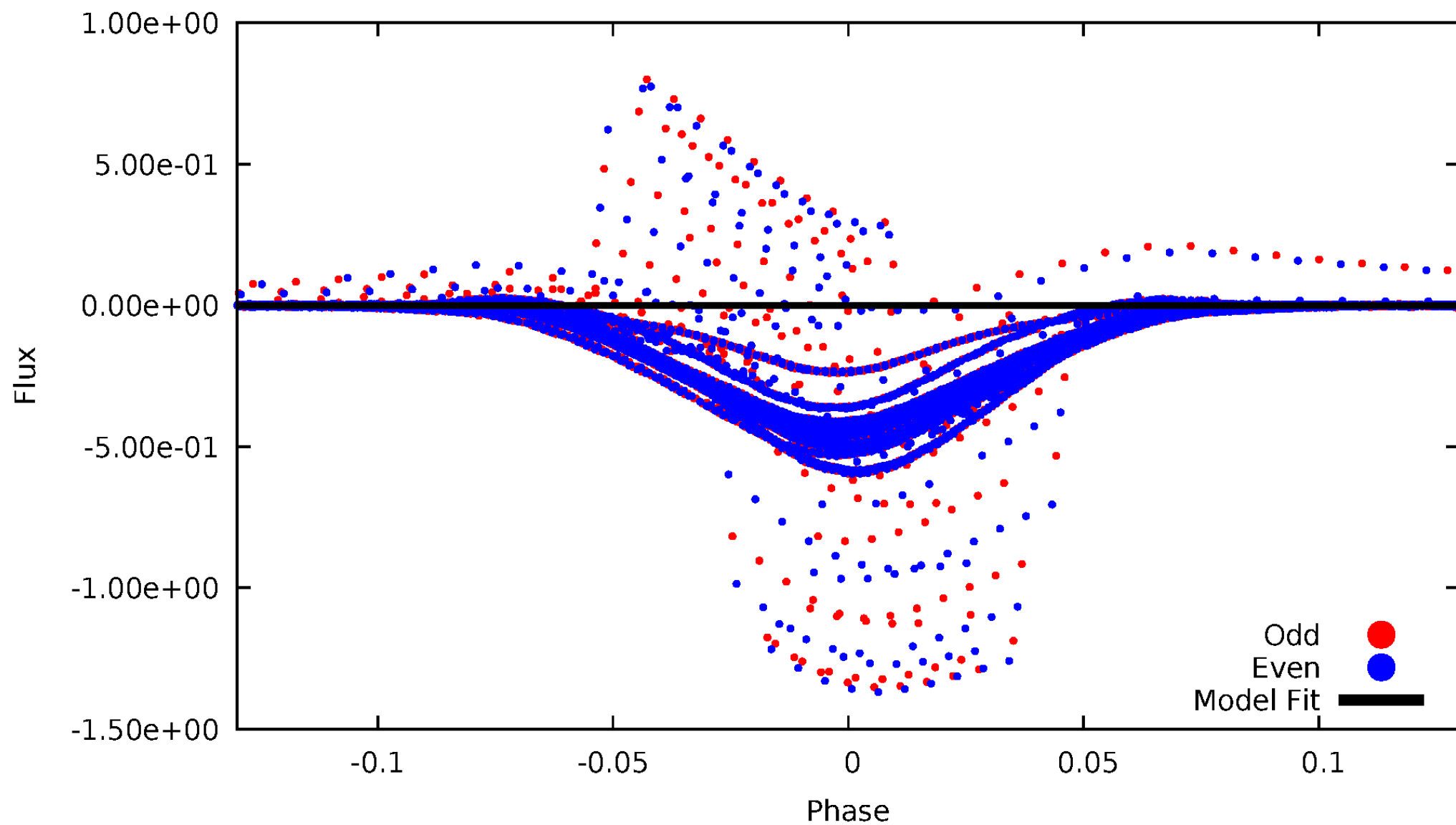


TCE 007203179-01



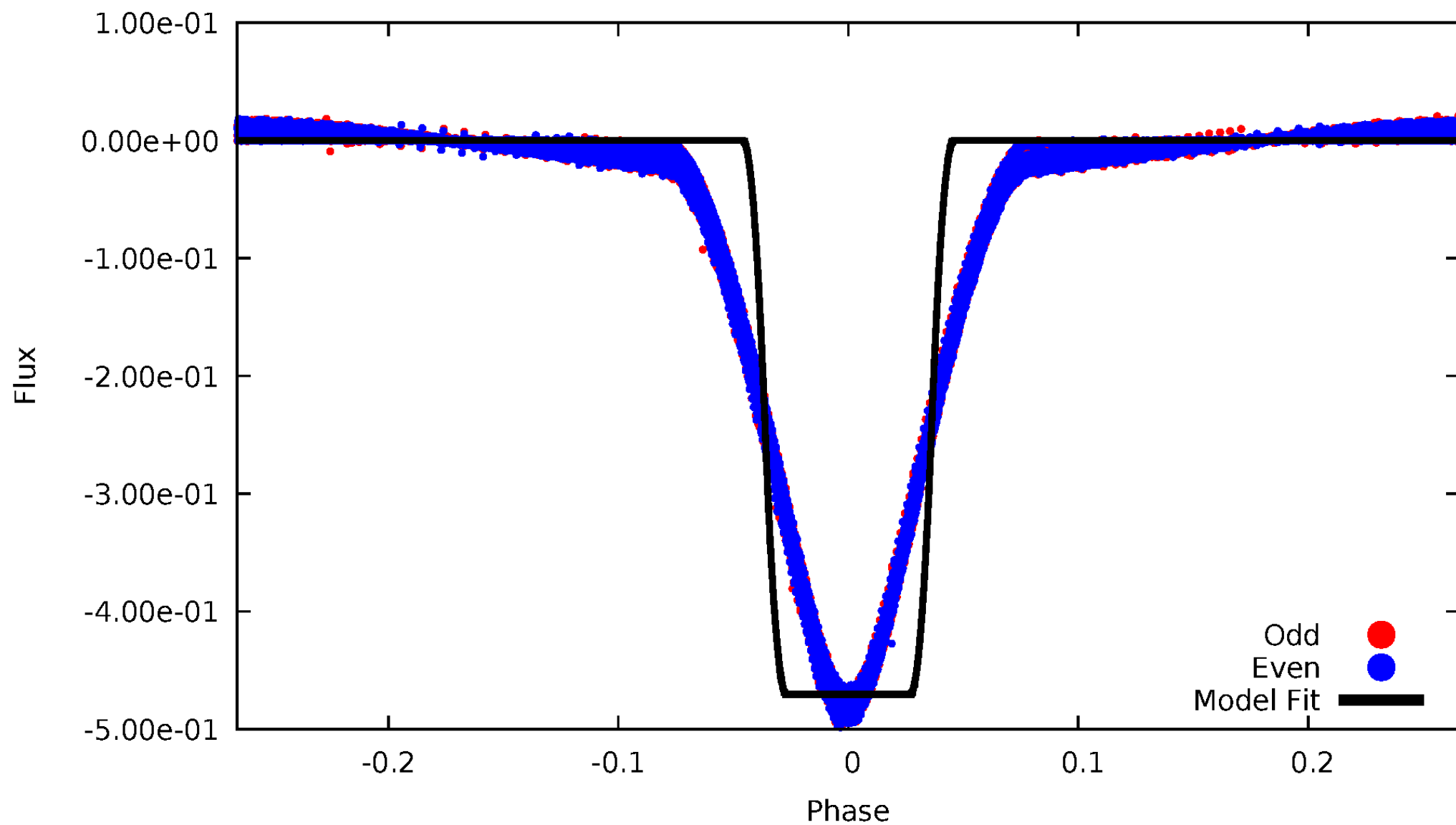
DV Odd/Even

TCE 007203179-01



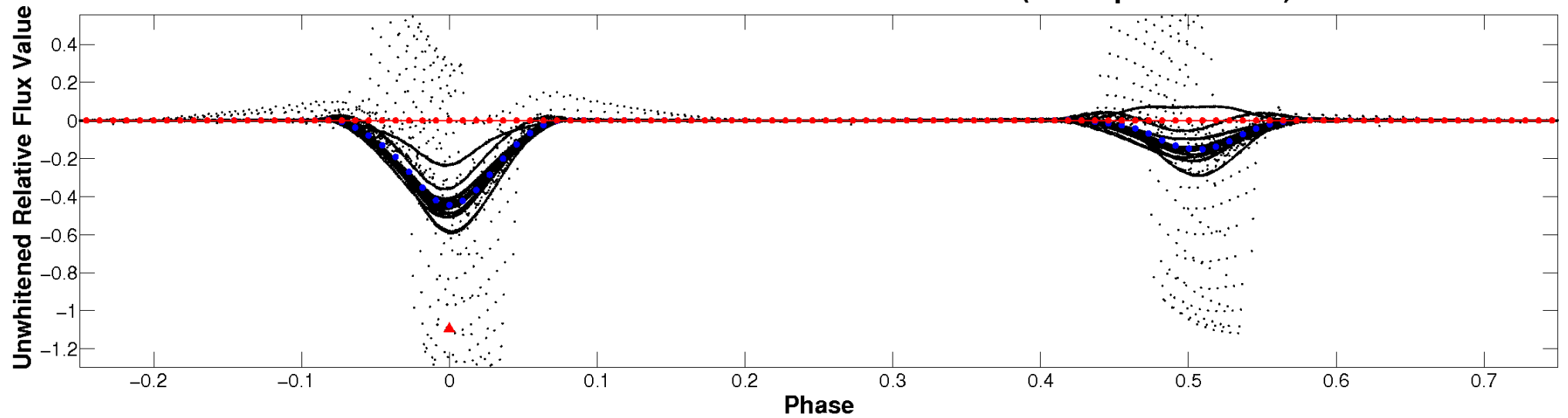
ALT Odd/Even

TCE 007203179-01



Non-Whitened Vs. Whitened Light Curve

Planet 1 : Phased Unwhitened Flux Time Series (TPS Epoch/Period)

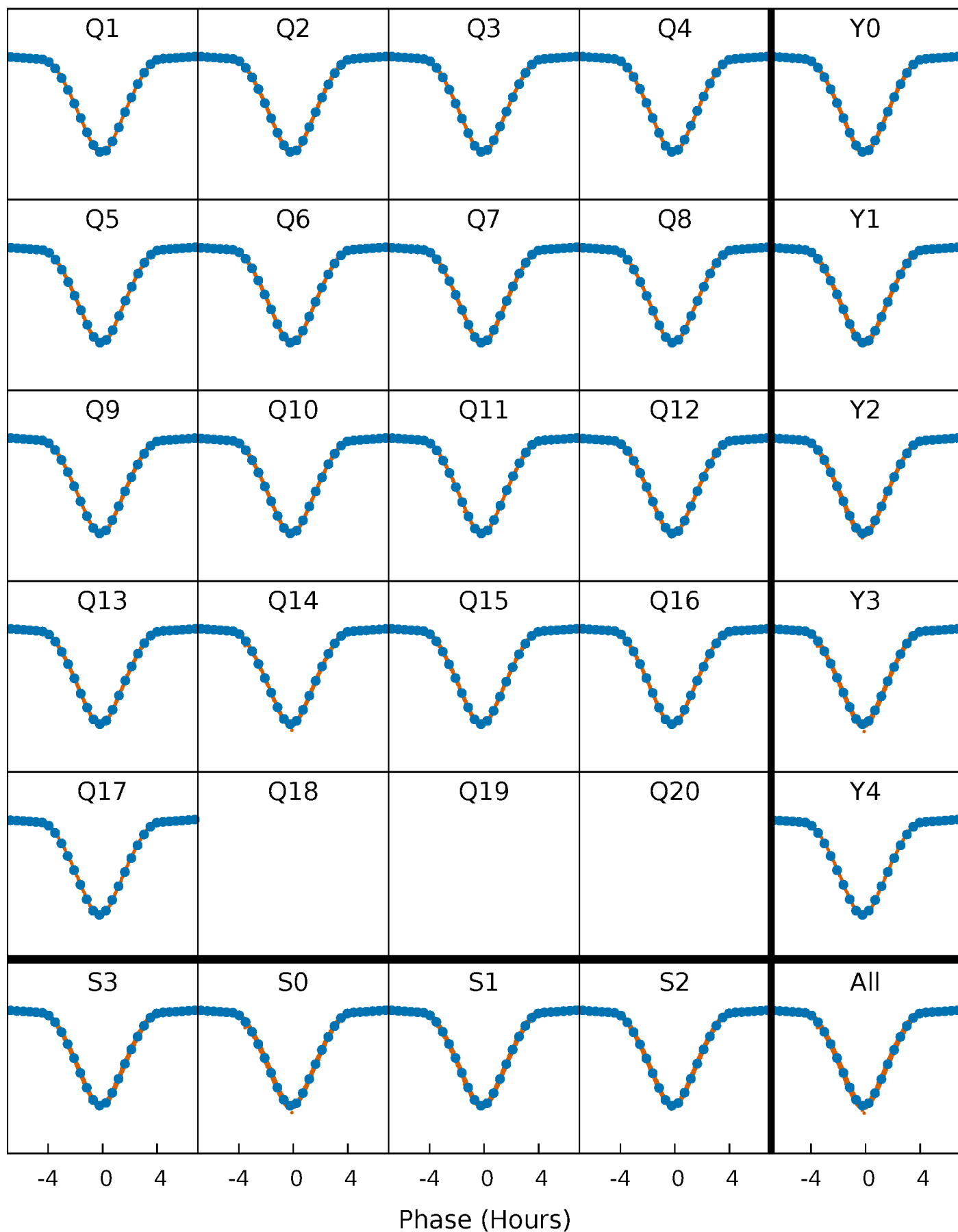


Planet 1 : Phased Whitened Flux Time Series (TPS Epoch/Period)



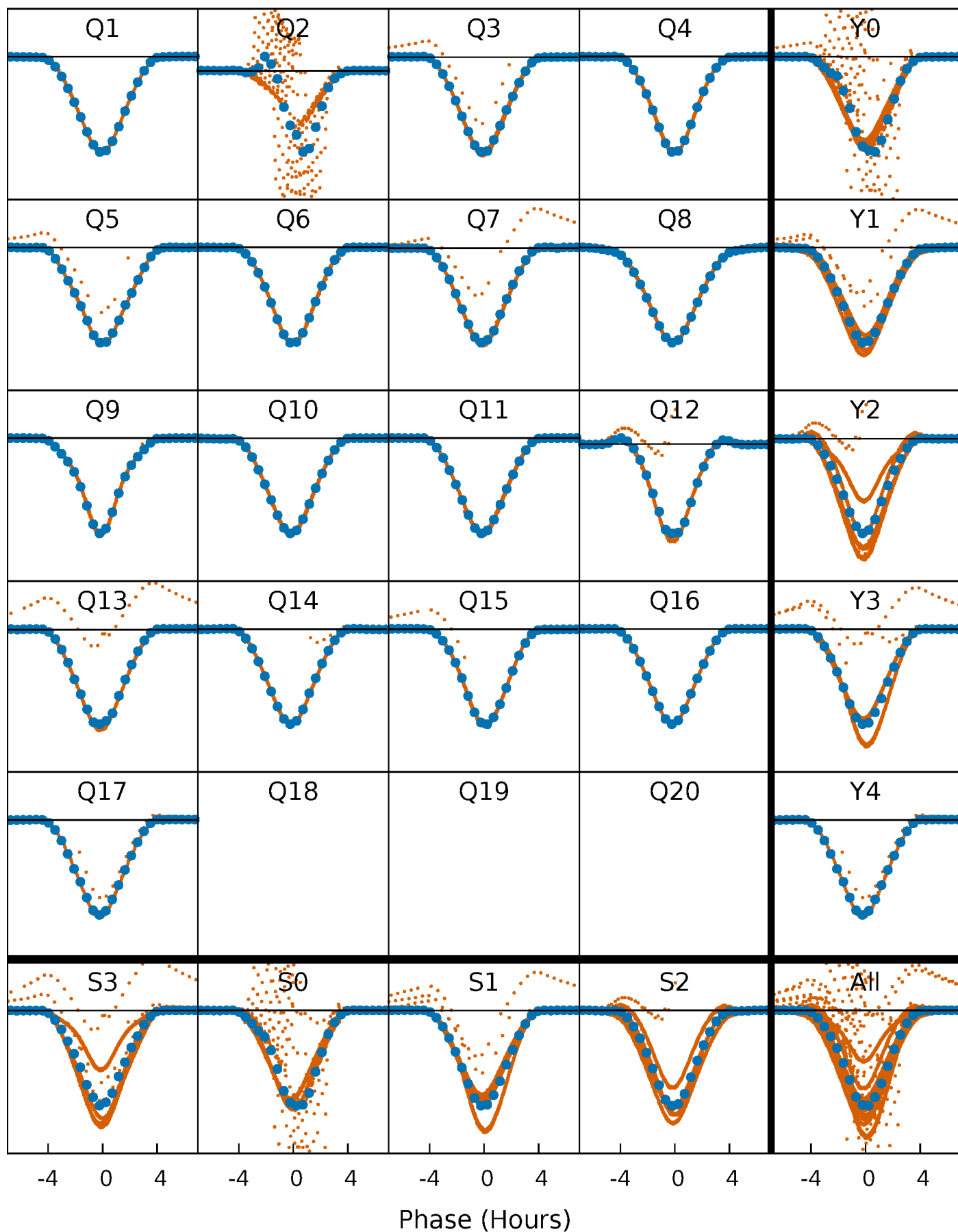
PDC Quarter-Phased Transit Curves

TCE 007203179-01 P= 2.245746 Days $T_0=133.268280$ (BKJD)



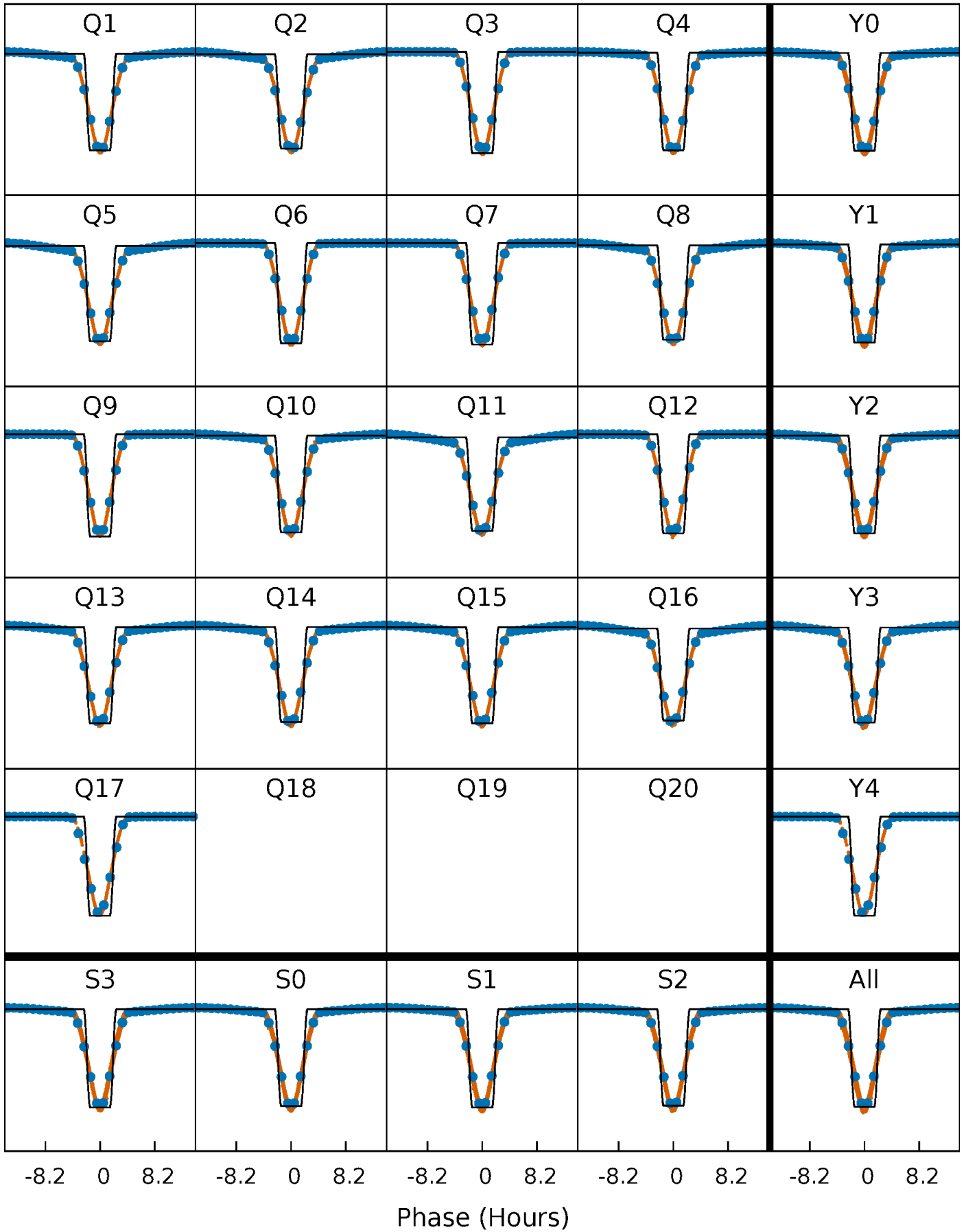
DV Quarter-Phased Transit Curves

TCE 007203179-01 P= 2.245746 Days $T_0=133.268280$ (BKJD)



Alt. Detrend Quarter-Phased Transit Curves

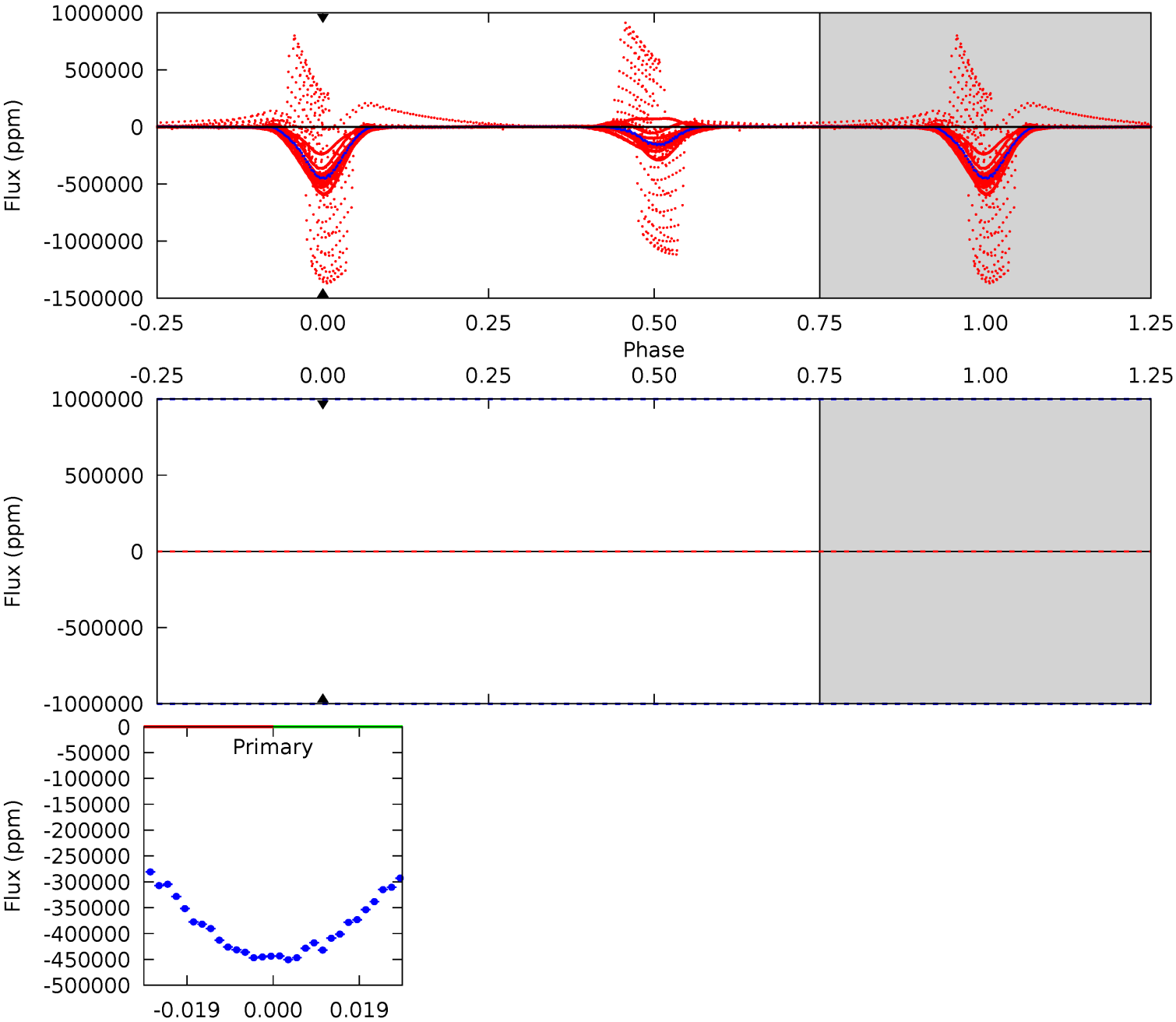
TCE 007203179-01 P= 2.245746 Days $T_0=133.263052$ (BKJD)



DV Model-Shift Uniqueness Test

007203179-01, P = 2.245746 Days, E = 131.022534 Days

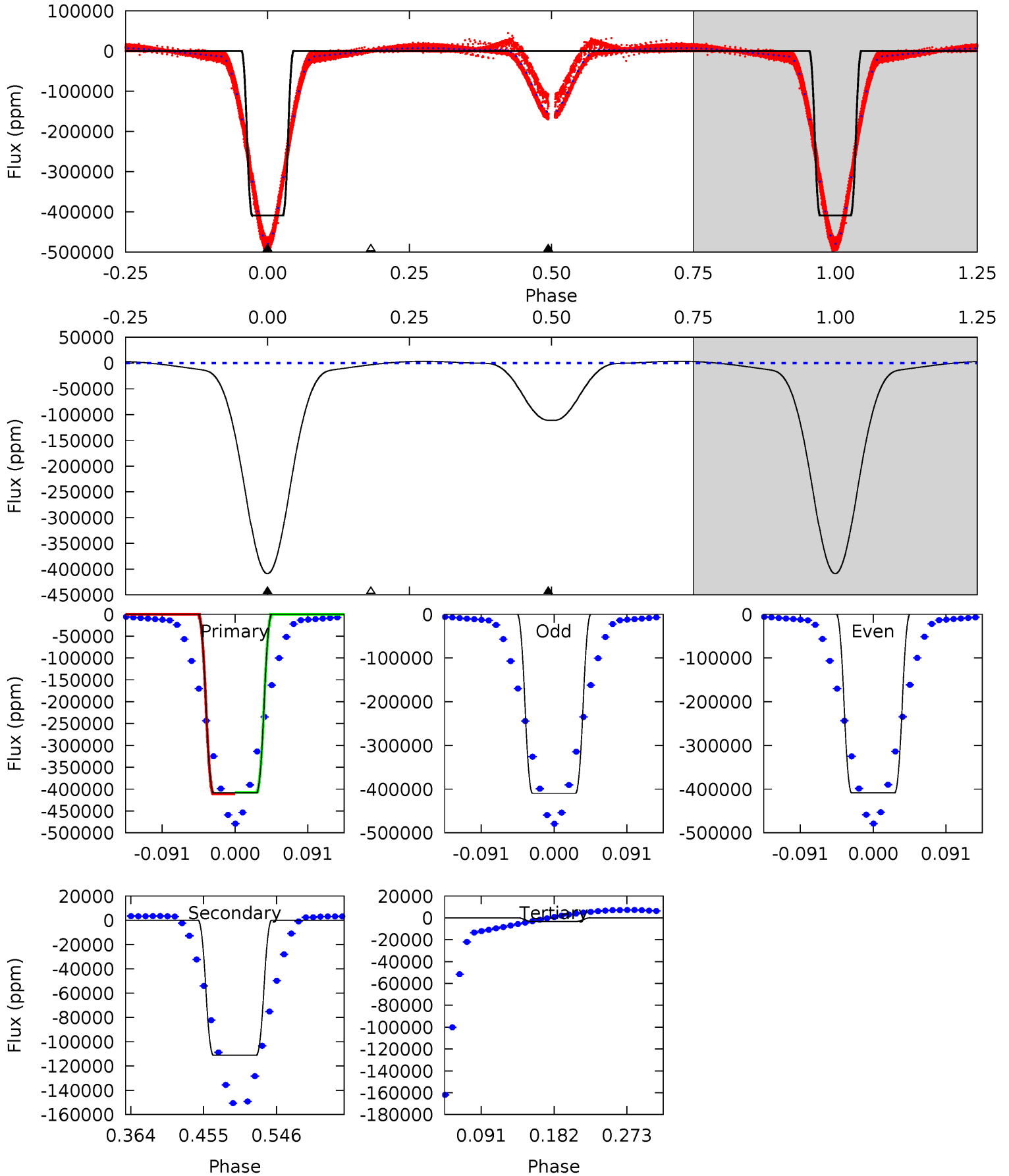
Pri	Sec	Ter	Pos	FA ₁	FA ₂	F _{Red}	Pri-Ter	Pri-Pos	Sec-Ter	Sec-Pos	Odd-Evn	DMM	Shape	TAT
0	0	0	0	1.00	1.00	1.00	0	0	0	0	0	0	0	0



Alt Model-Shift Uniqueness Test

007203179-01, P = 2.245746 Days, E = 131.017306 Days

Pri	Sec	Ter	Pos	FA ₁	FA ₂	F _{Red}	Pri-Ter	Pri-Pos	Sec-Ter	Sec-Pos	Odd-Evn	DMM	Shape	TAT
4127	1121	33.4	0	4.58	1.69	64.3	4094	4127	1088	1121	4.45	1.00	0.01	15.2



Stellar Parameters For KIC 007203179

	$T_{\text{eff}}(K)$	$\log(g)$	[Fe/H]	$R (R_{\odot})$	$M(M_{\odot})$	$p_{\star} (\text{g}\cdot\text{cm}^{-3})$
	6508^{+155}_{-214}	$4.287^{+0.105}_{-0.195}$	$-0.060^{+0.250}_{-0.300}$	$1.312^{+0.435}_{-0.218}$	$1.217^{+0.188}_{-0.169}$	$0.759^{+0.383}_{-0.406}$
	+2%/-3%	+2%/-5%	+417%/-500%	+33%/-17%	+15%/-14%	+50%/-53%
Source	PHO1	KIC0	KIC0	DSEP		

KIC = Kepler Input Catalog; PHO = Photometry; SPE = Spectroscopy; AST = Asteroseismology
 TRA = Transits; DESP = Dartmouth Models; MULT = Multiple Models

Secondary Eclipse Parameters for KIC 007203179-01 / KOI 6845.01

Detrend	Depth (ppm)	$R_p (R_{\oplus})$	$T_{\text{max}} (K)$	$T_{\text{obs}} (K)$	A_{obs}
DV	0 ± 1000000	$32.99^{+15.60}_{-14.60}$	2444^{+196}_{-133}	-3833^{+12296}_{-4372}	$-2.406^{+83.953}_{-70.773}$
Alt.	-111048 ± 99	$100.03^{+21.63}_{-17.89}$	2439^{+194}_{-141}	4755^{+328}_{-291}	$8.772^{+3.995}_{-2.748}$

T_{max} = Theoretical Maximum Planetary Temperature
 T_{obs} = Observed Planetary Temperature (Assuming $A=0.3$)
 A_{obs} = Observed Albedo (Assuming $T=0$)

If a secondary eclipse is present, the system is likely an EB if $T_{\text{obs}} \gg T_{\text{max}}$ AND $A_{\text{obs}} \gg 1.0$

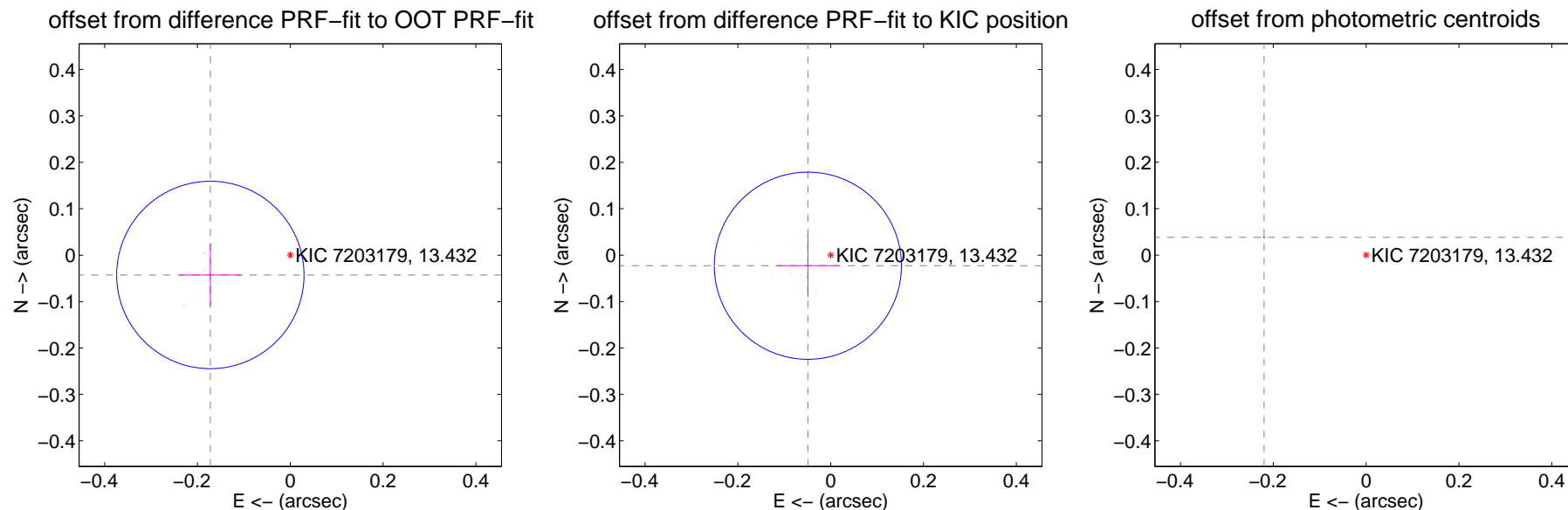
DV Centroid Data

Supplemental centroid analysis for 007203179-01. Kepler magnitude: 13.43. Transit SNR -1.00

There are 17 quarters with good PRF difference image offsets

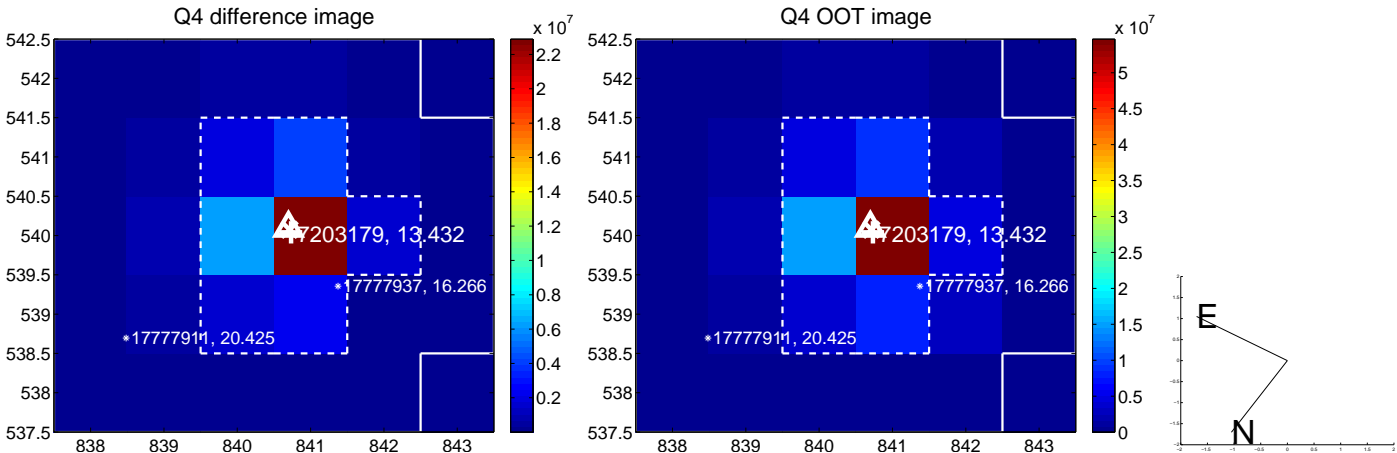
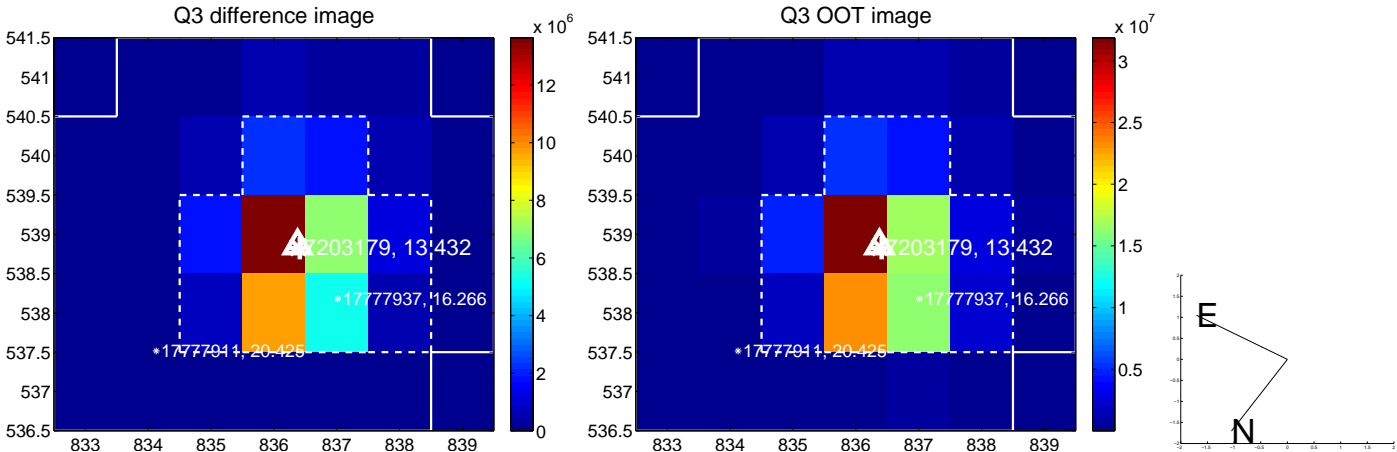
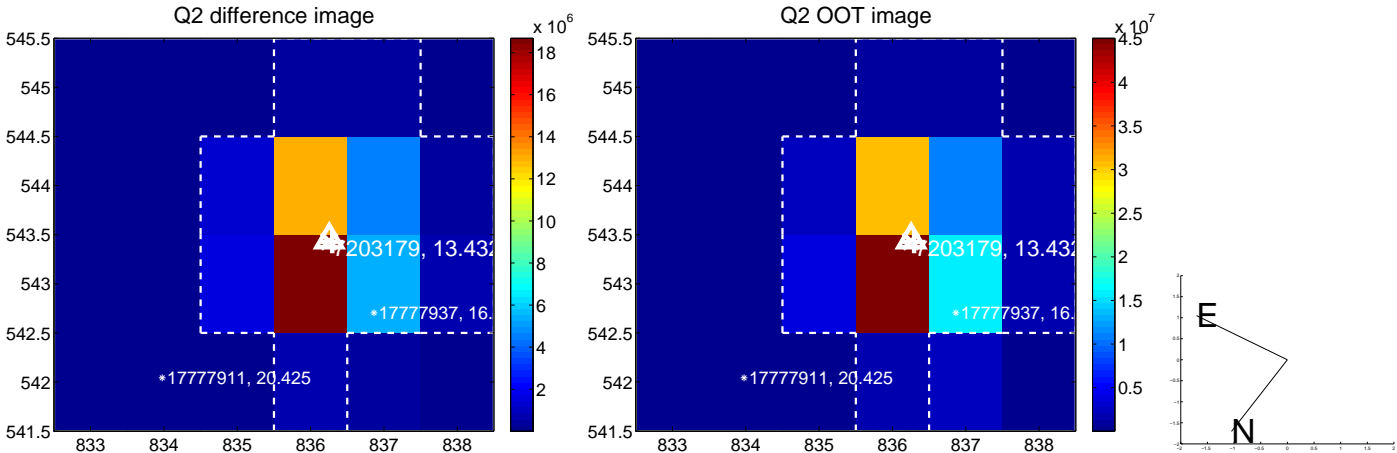
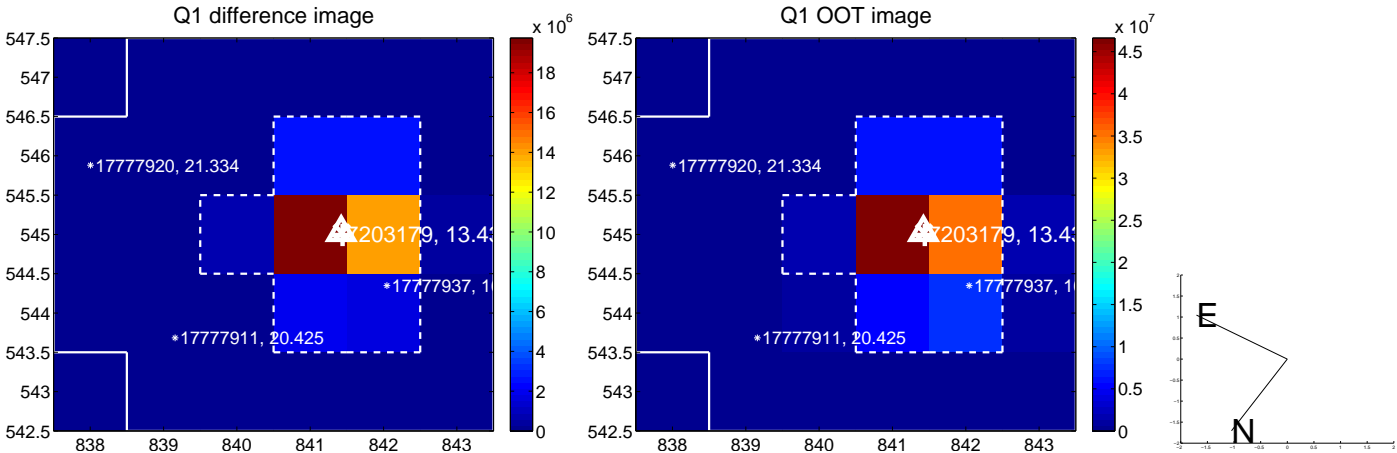
The direct PRF centroid is offset from the target star catalog position by about 0.12 arcsec

	Distance in arcsec	Distance / σ	Δ RA	Δ Dec
PRF-fit source offset from OOT	0.177 ± 0.067	2.64	0.172 ± 0.067	-0.043 ± 0.068
PRF-fit source offset from KIC position	0.054 ± 0.067	0.81	0.049 ± 0.067	-0.023 ± 0.068
photometric centroid source offset	0.22 ± 0.00	847.34	0.22 ± 0.00	0.04 ± 0.00

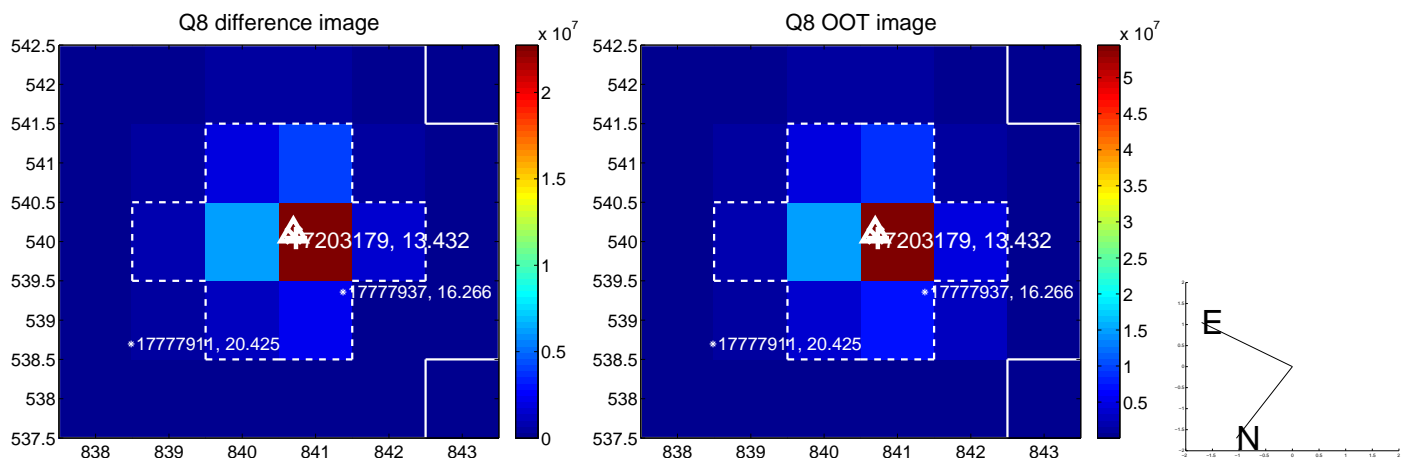
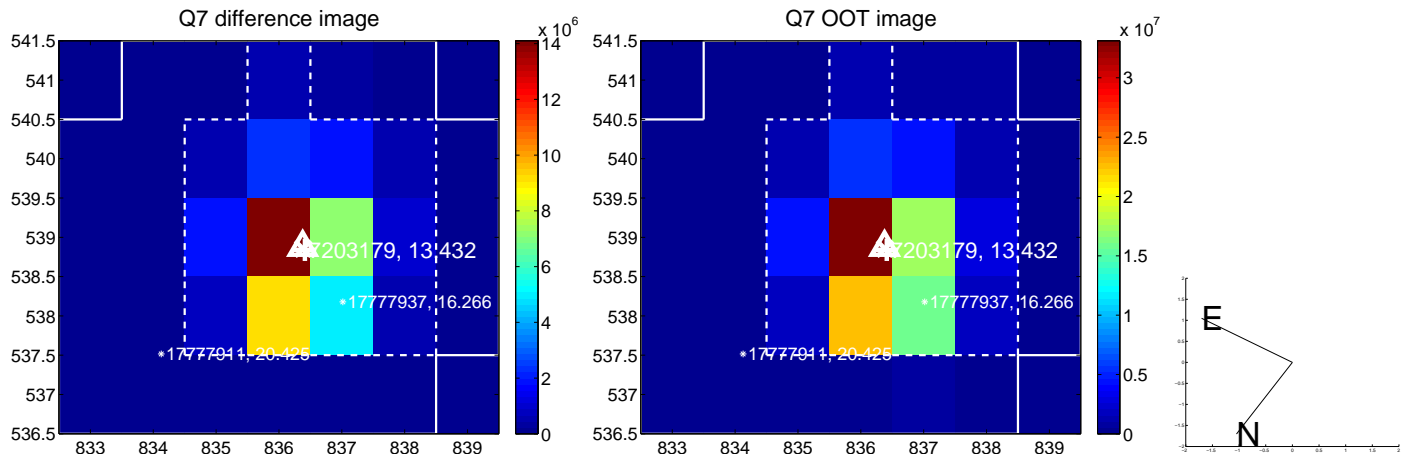
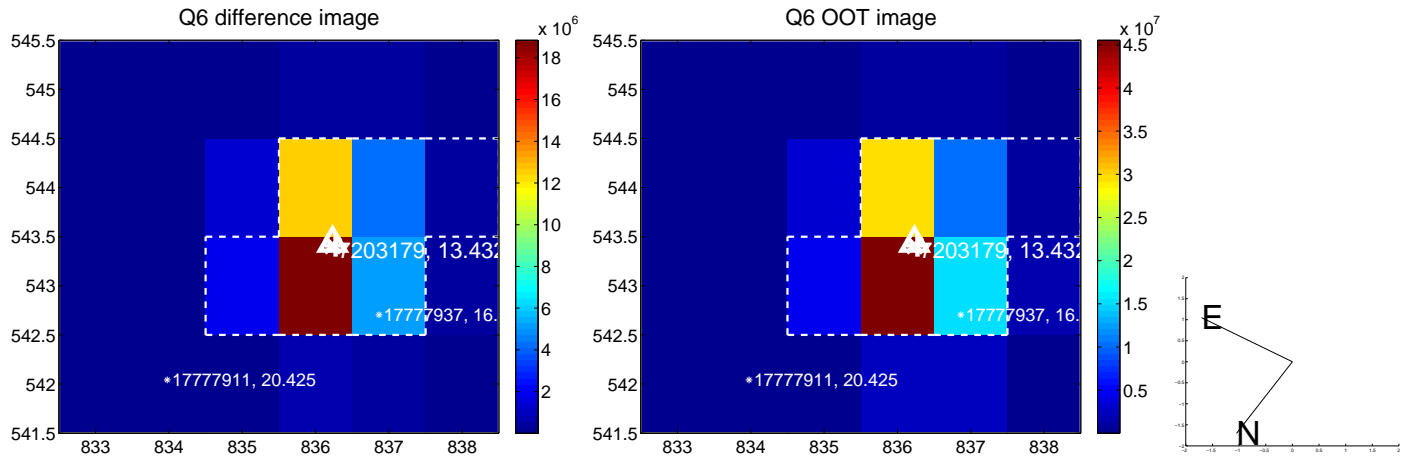
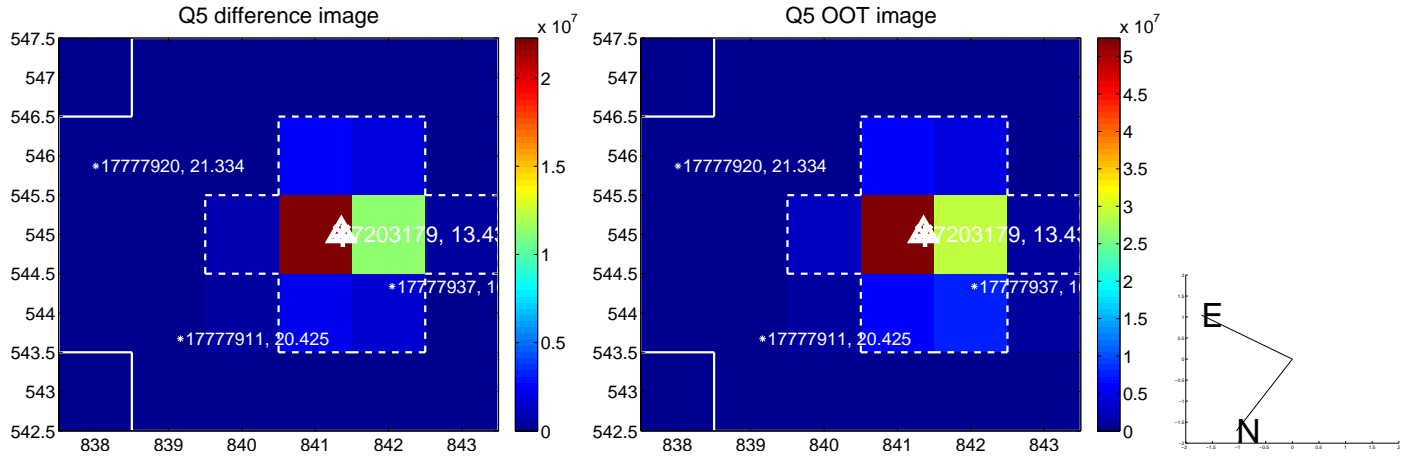


Centroid source offsets from the target star reconstructed from PRF and photometric centroids. **Sky blue crosses:** good quarterly centroid offsets; **Vermillion crosses:** bad quarterly centroid offsets; magenta cross: average over quarters. Length of the crosses: one- σ uncertainty. Blue circle: three- σ . Red *: target star. Blue *: Other stars. Text next to a star gives its KIC ID and kepmag. KIC IDs > 15,000,000 are from the UKIRT catalog.

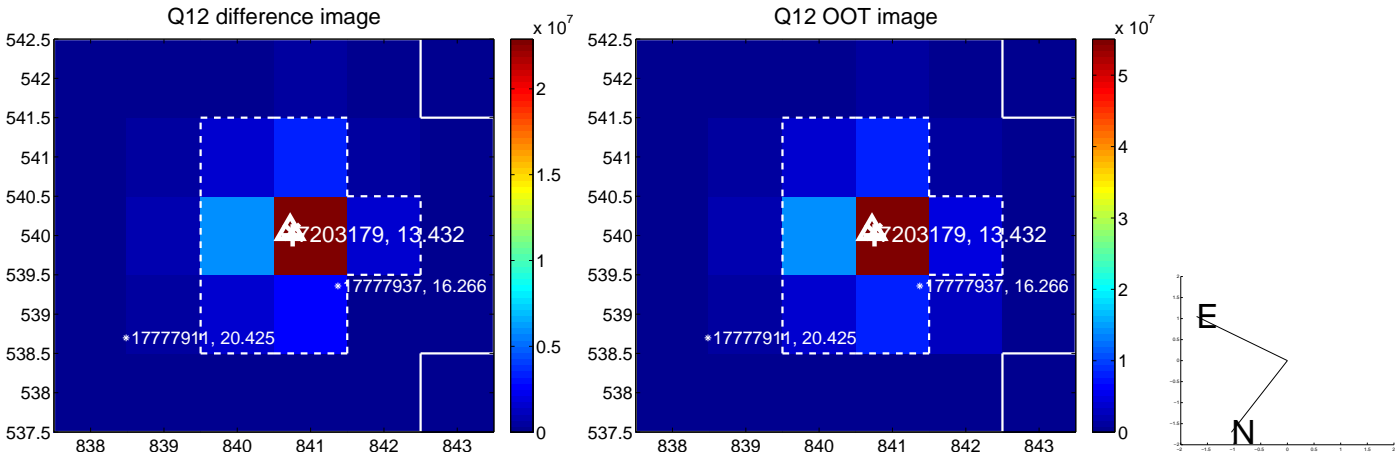
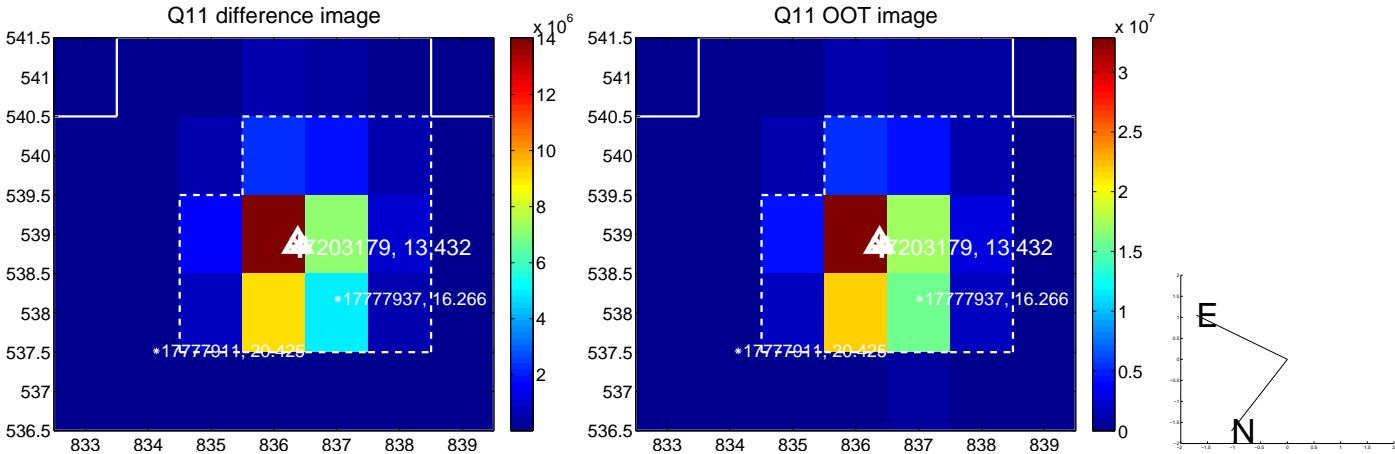
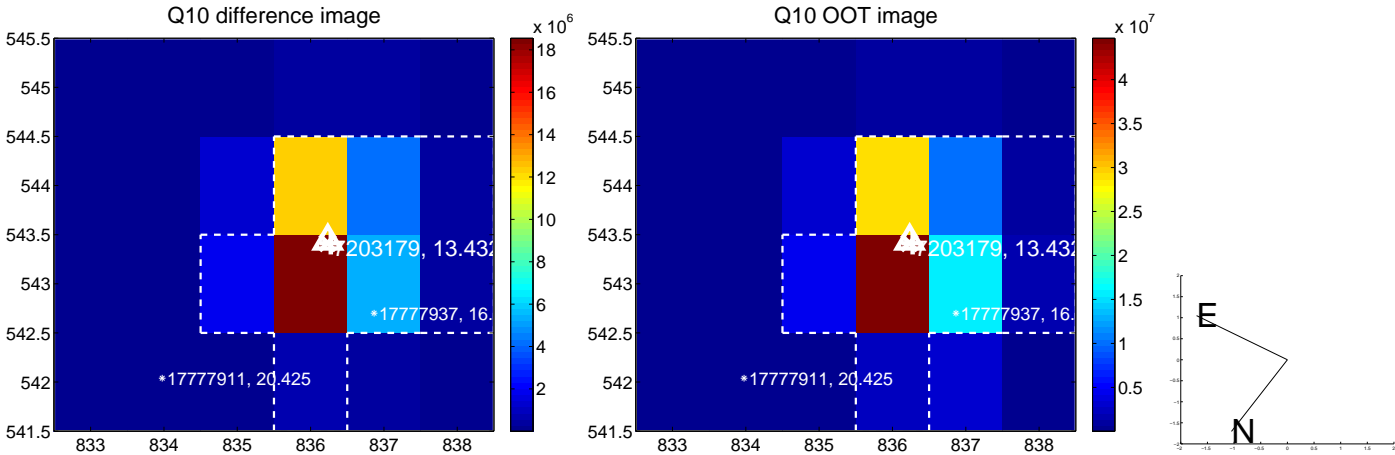
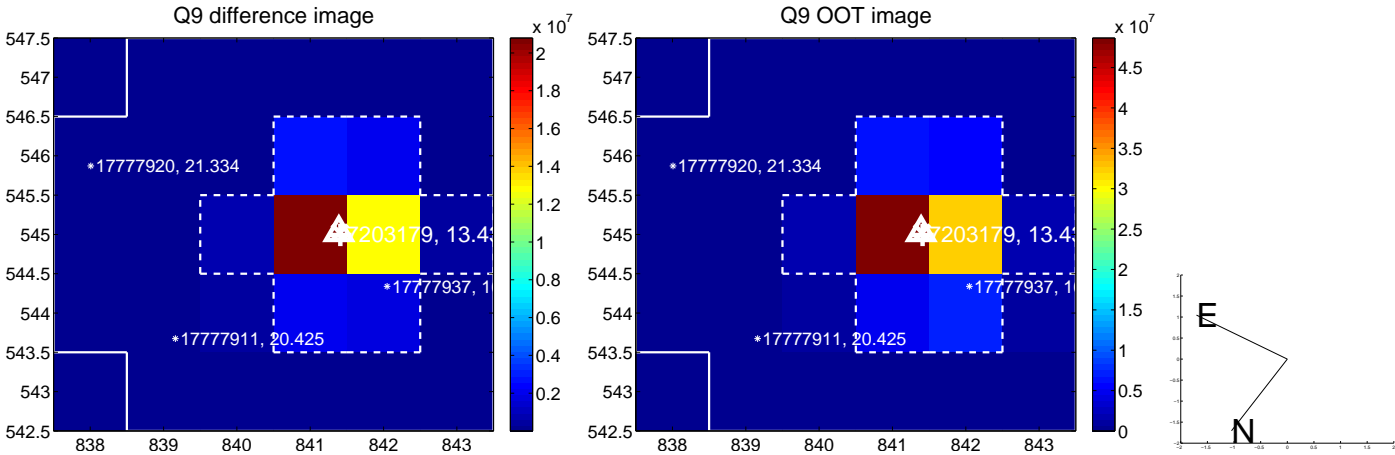
white \times : KIC target position; +: OOT centroid; \triangle : difference centroid. red \times : large negative pixel value.



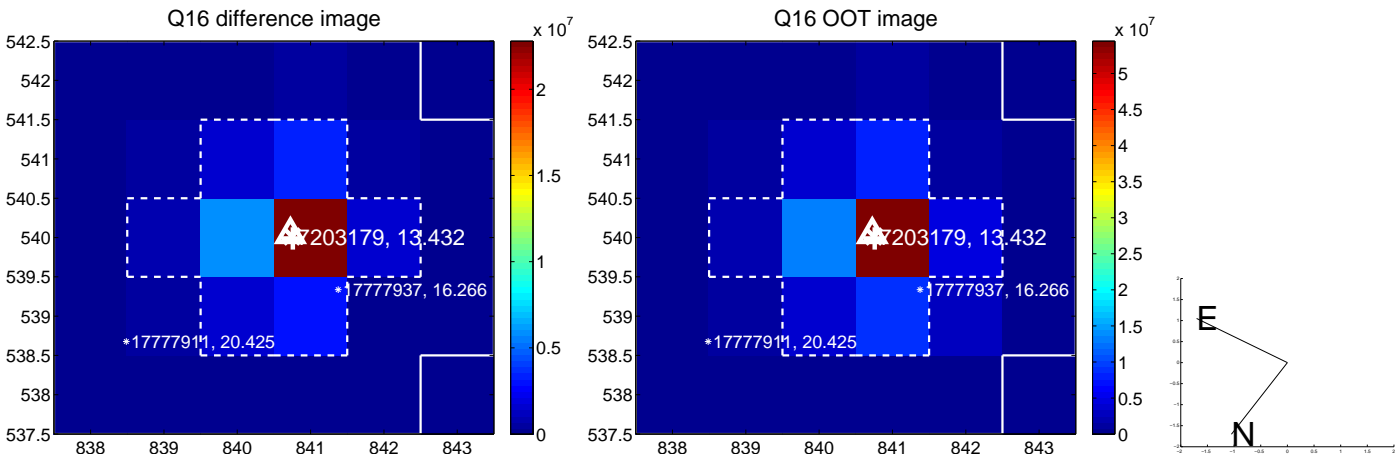
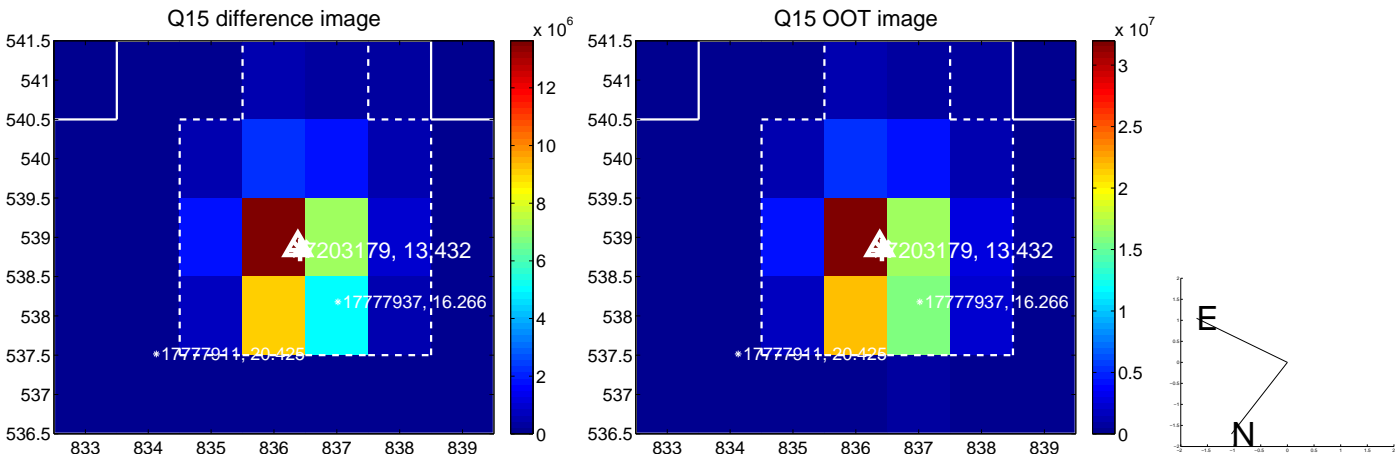
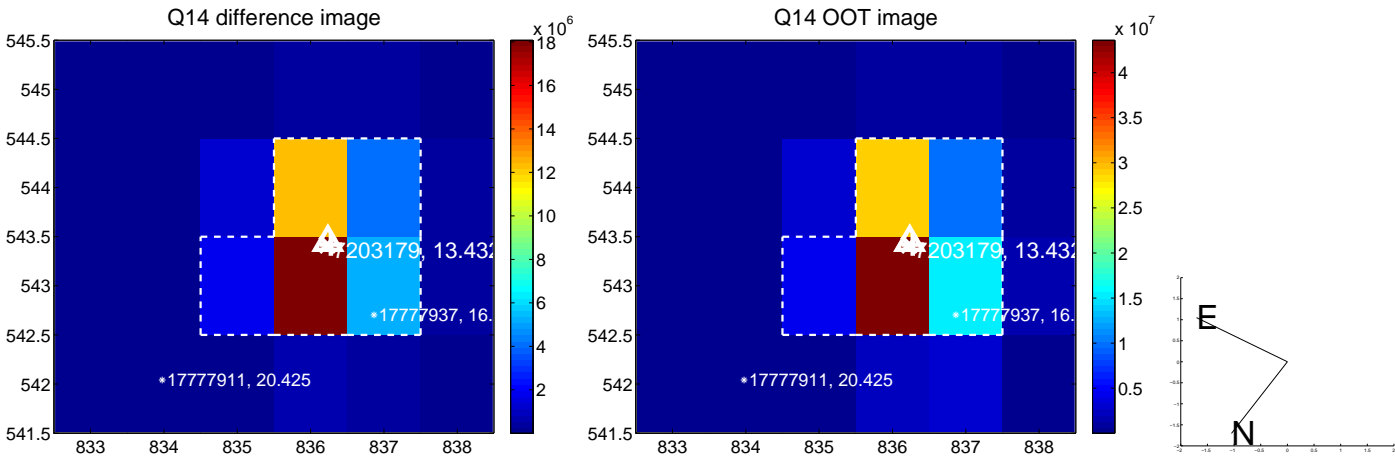
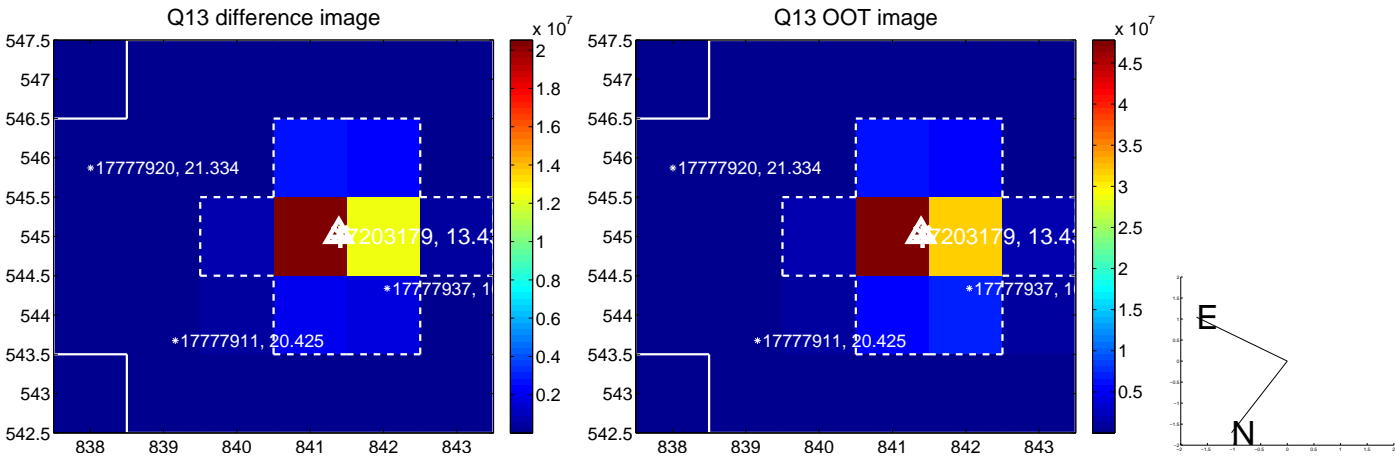
white \times : KIC target position; $+$: OOT centroid; \triangle : difference centroid. red \times : large negative pixel value.



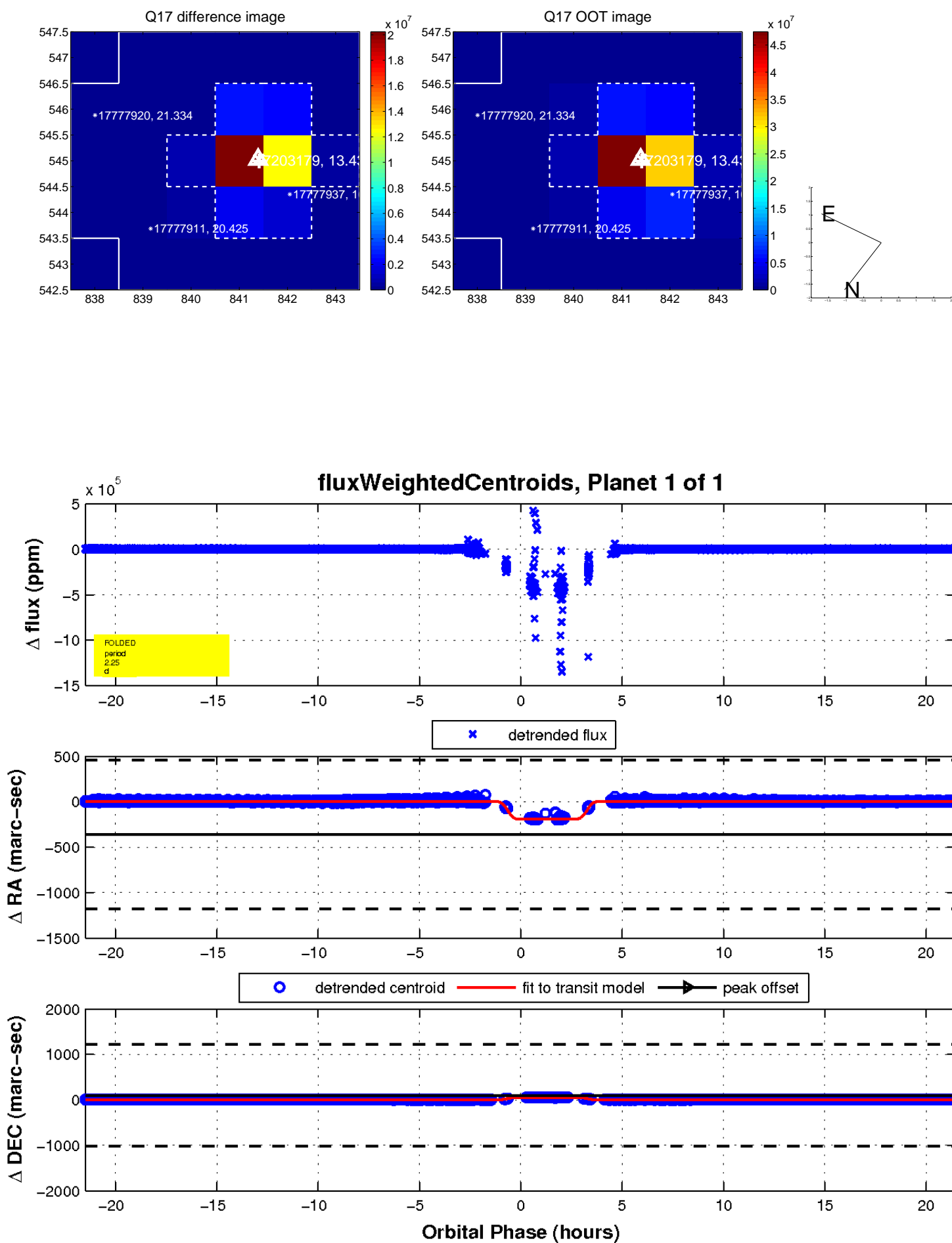
white \times : KIC target position; +: OOT centroid; \triangle : difference centroid. red \times : large negative pixel value.



white \times : KIC target position; +: OOT centroid; \triangle : difference centroid. red \times : large negative pixel value.



white \times : KIC target position; $+$: OOT centroid; \triangle : difference centroid. red \times : large negative pixel value.



UKIRT Image

