

KIC 007199225

Q1-17 DR25 TCE Parameters

TCE	Run Type	KOI?	Period (Days)	Epoch (BKJD)	Depth (ppm)	Duration (Hours)	MES	SNR	R_{\star} (R_{\odot})	T_{\star} (K)	R_p (R_{\oplus})	S_p (S_{\oplus})
007199225-01	OBS	No	0.566654	131.725656	1.4	5.737	14.8	0.9	3.14	4902	0.36	0.00

Robovetter Results

TCE	Run Type	Disp	Score	N	S	C	E	Comments
007199225-01	OBS	FP	0.00	1	0	0	1	LPP_DV—LPP_ALT—CENT_FEW_DIFFS—EPHEM_MATCH

Notes: OBS = Observed. INJ = Injected. INV = Inverted. SCR = Scrambled.

N = Not Transit-Like. S = Stellar Eclipse. C = Centroid Offset. E = Ephemeris Match.

See http://exoplanetarchive.ipac.caltech.edu/docs/API_kepcandidate_columns.html#proj_disp_col for comment definitions.

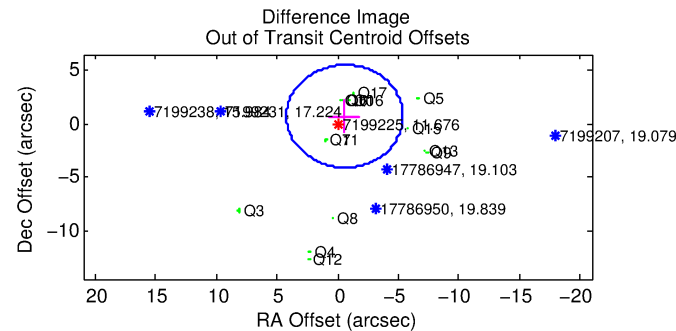
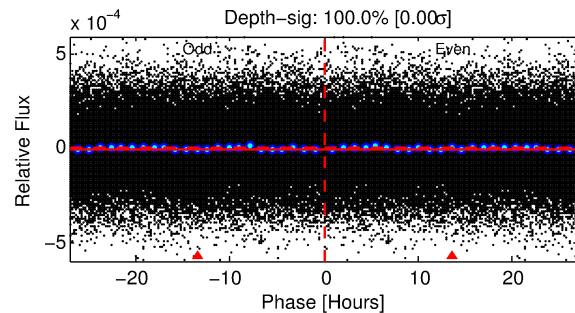
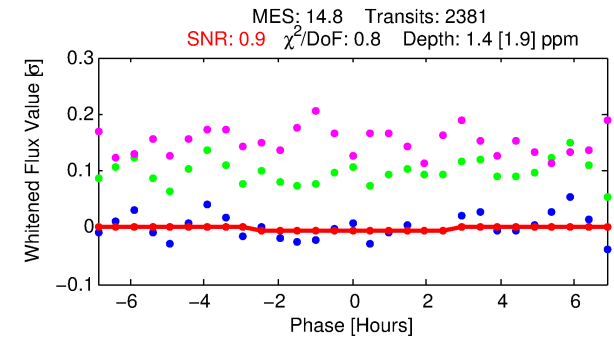
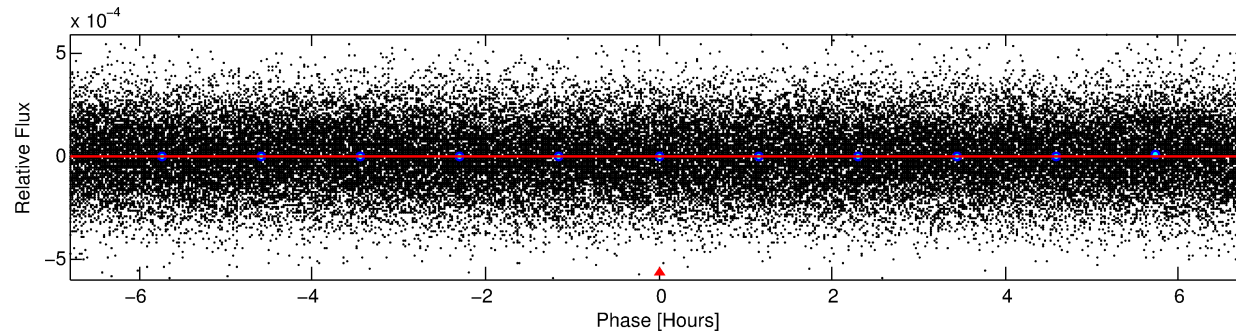
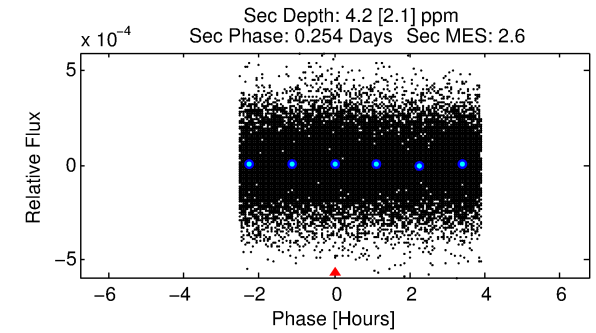
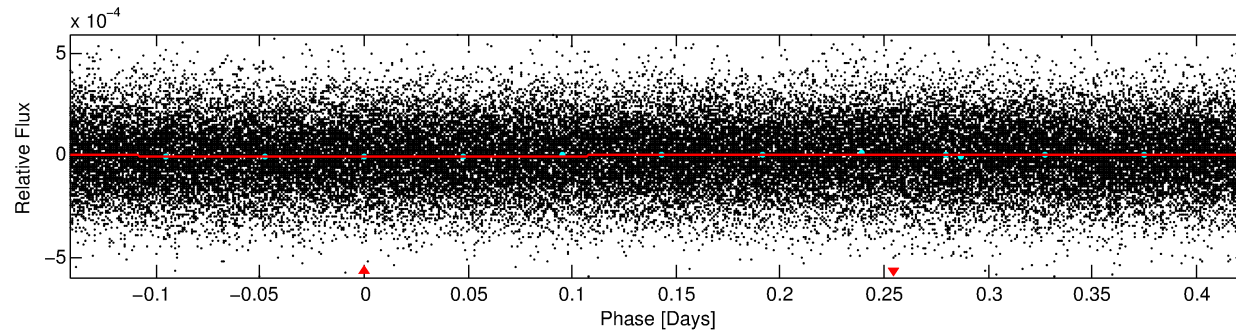
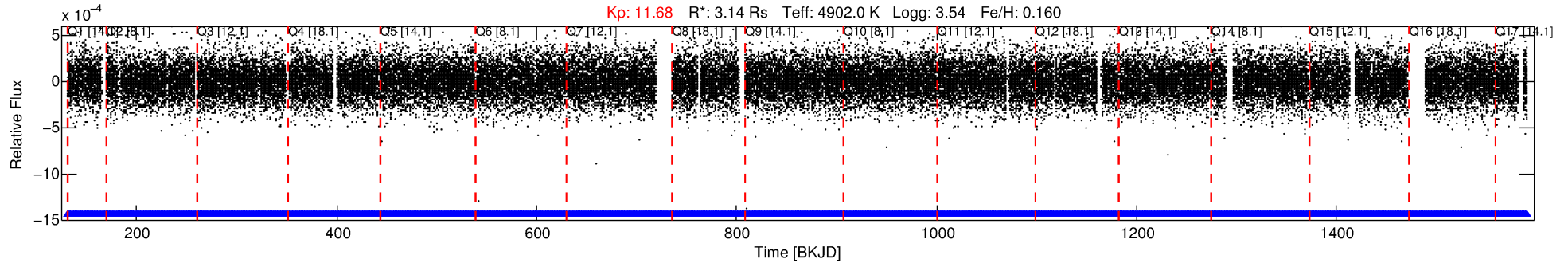
Ephemeris Match Information For 007199225-01

TCE (1)	KIC	Parent (2)	Parent KIC	$P_1:P_2$	Dist ($''$)	Δ Row	Δ Col	m_2	m_1	D_2/D_1	Mechanism	Flag	σ_P	σ_T
007199225-01	7199225	RR-Lyr-pri	7198959	1:1	211.0	18	49	7.86	11.67	623300.00	Direct-PRF	0	2.79	16.47

Notes: $P_1:P_2$ is the period ratio. Dist is the distance in arcseconds. Δ Row and Δ Col are the number of pixels apart in row and column. m_2 and m_1 are the magnitudes of the parent and child. D_2/D_1 is the parent's transit depth divided by the child's. σ_P and σ_T are the significance of the match in period and epoch. For a match to be considered significant $\sigma_P < 5.0$ and $\sigma_T < 5.0$. Matches which have σ_P and σ_T very close to this cutoff should receive extra scrutiny, especially if the period ratio is very large.

DV One-Page Summary

KIC: 7199225 Candidate: 1 of 1 Period: 0.567 d



DV Fit Results:

Period = 0.56665 [0.00014] d
Epoch = 131.7257 [0.0634] BKJD
Rp/R* = 0.0010 [0.0061]
a/R* = 1.03 [1.09]
b = 0.30 [60.80]
Seff = N/A
Teq = N/A
Rp = 0.36 [2.10] Re
a = N/A
Ag = N/A
Teffp = N/A

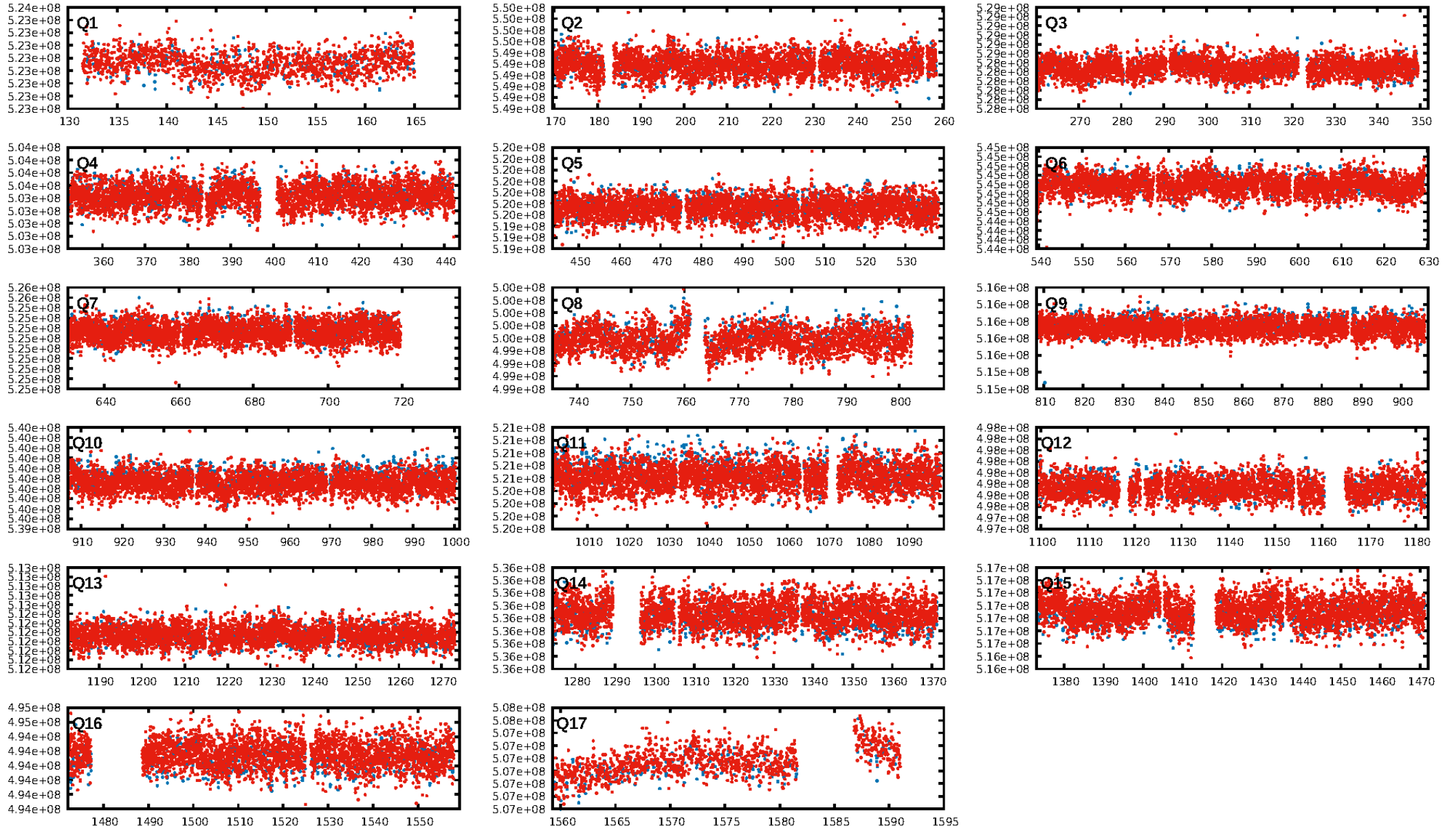
DV Diagnostic Results:

ShortPeriod-sig: N/A
LongPeriod-sig: N/A
ModelChiSquare2-sig: N/A
ModelChiSquareGof-sig: N/A
Bootstrap-pfa: N/A
RollingBand-fgt: 1.00 [2274/2274]
GhostDiagnostic-chr: N/A
Centroid-sig: N/A
Centroid-so: N/A
OotOffset-rm: 0.921 arcsec [0.58σ]
KicOffset-rm: 0.676 arcsec [0.40σ]
OotOffset-st: 2/4/4/4 [14]
KicOffset-st: 2/4/4/4 [14]
DiffImageQuality-fgm: 0.14 [2/14]
DiffImageOverlap-fno: 1.00 [17/17]

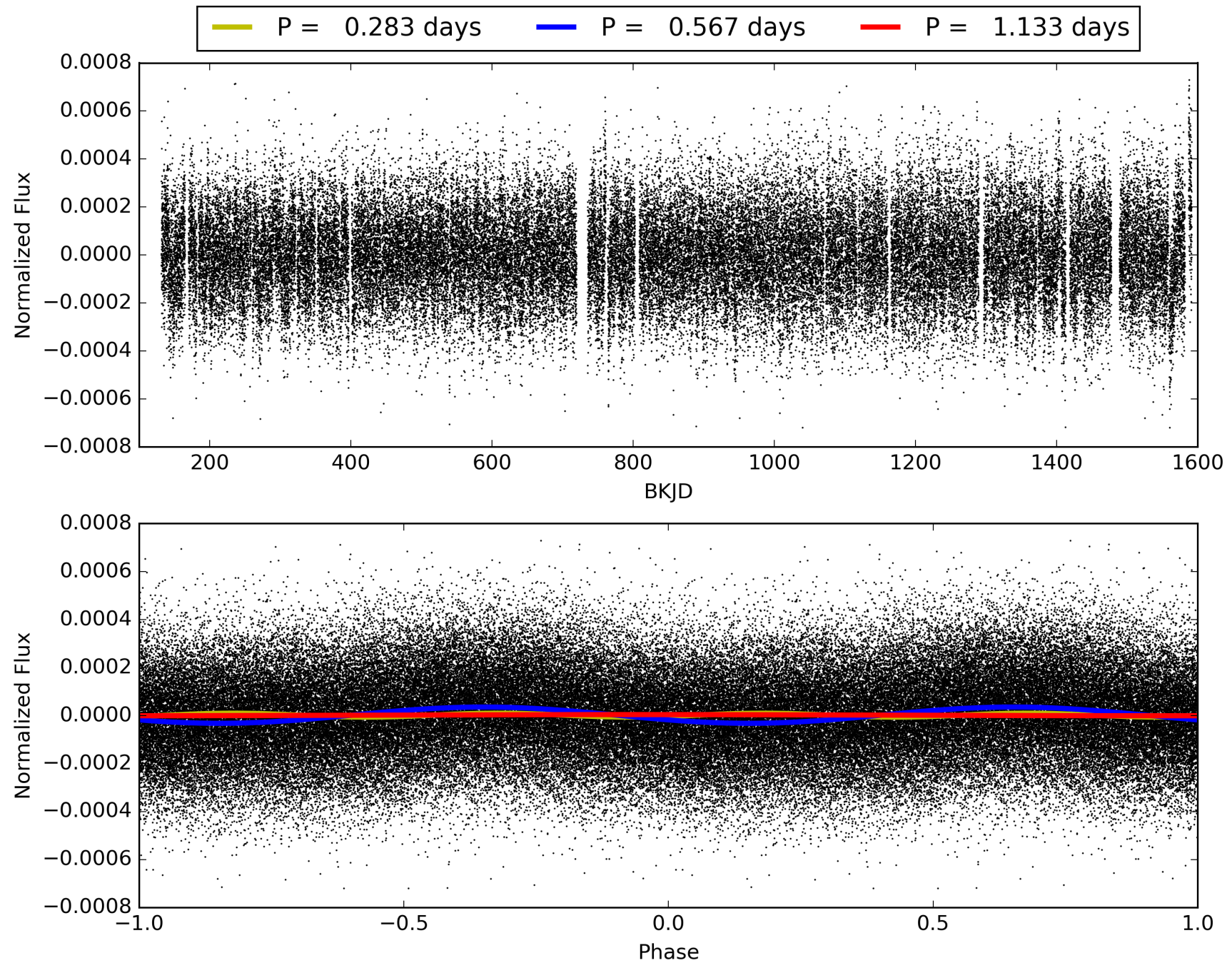
Software Revision: svn+ssh://murzim/repo/soc/tags/release/9.3.42@60958 -- Date Generated: 29-Jan-2016 09:18:16 Z

This Data Validation Report Summary was produced in the Kepler Science Operations Center Pipeline at NASA Ames Research Center

TCE 007199225-01, PDC Light Curves

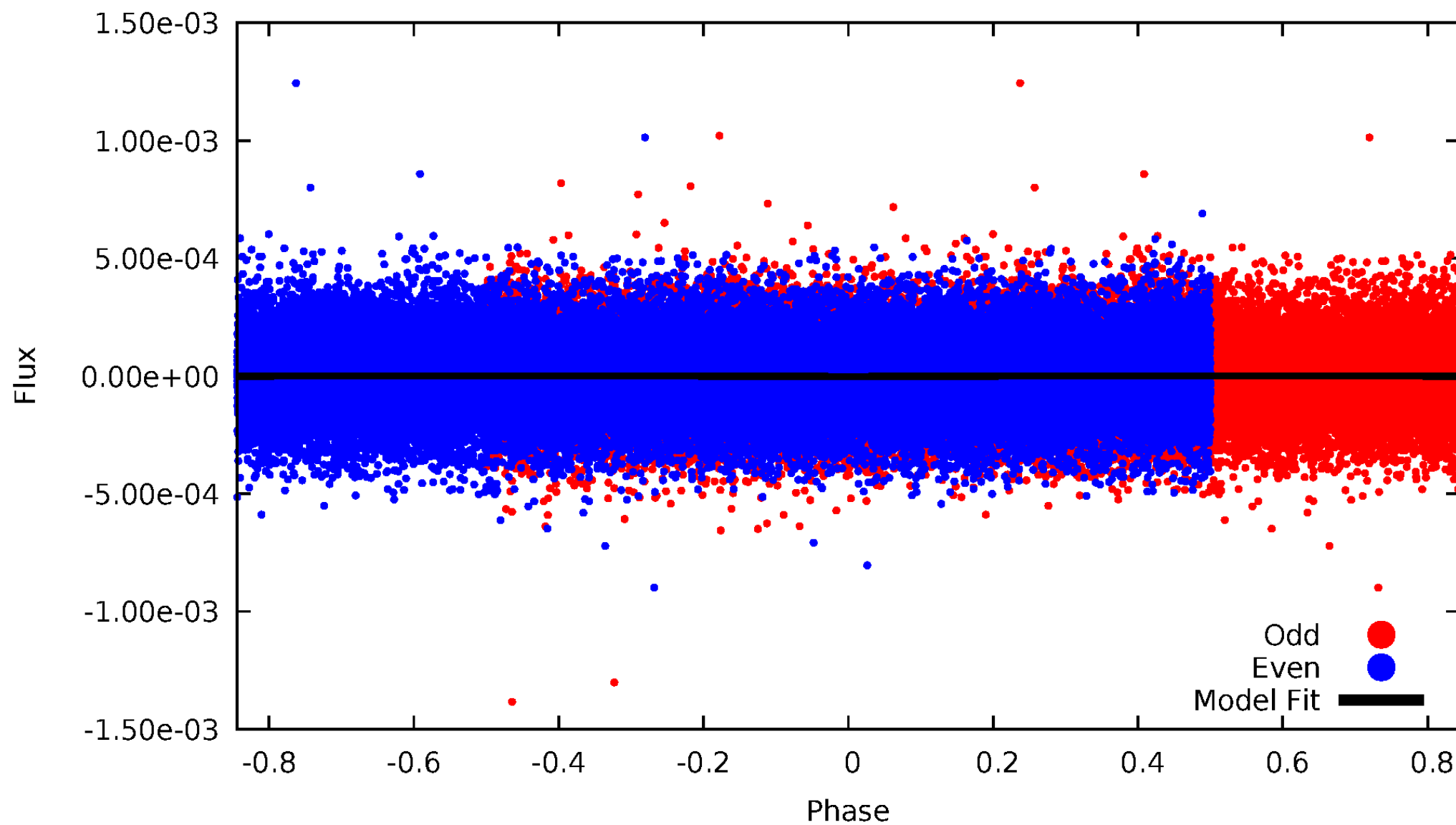


TCE 007199225-01



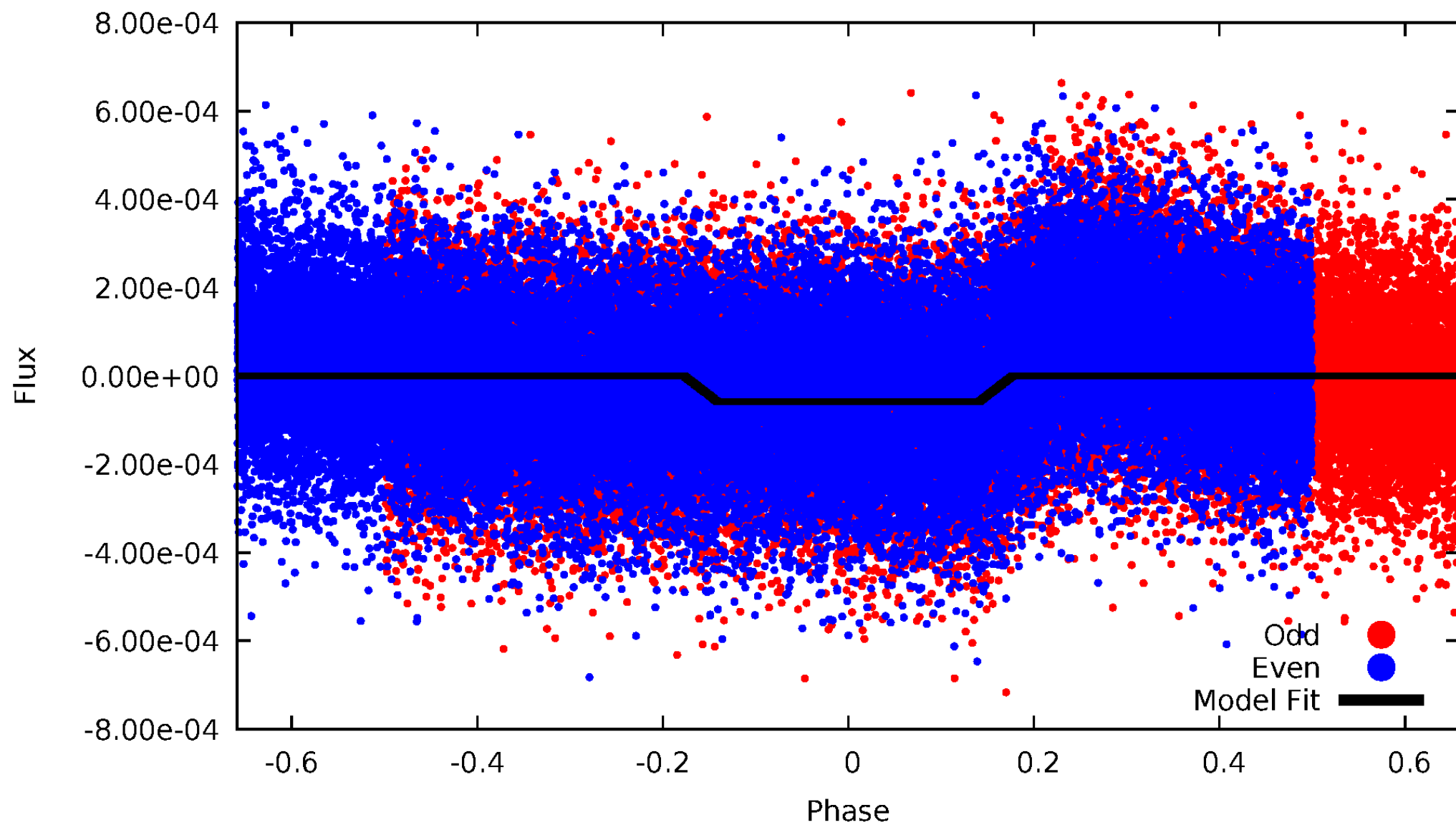
DV Odd/Even

TCE 007199225-01



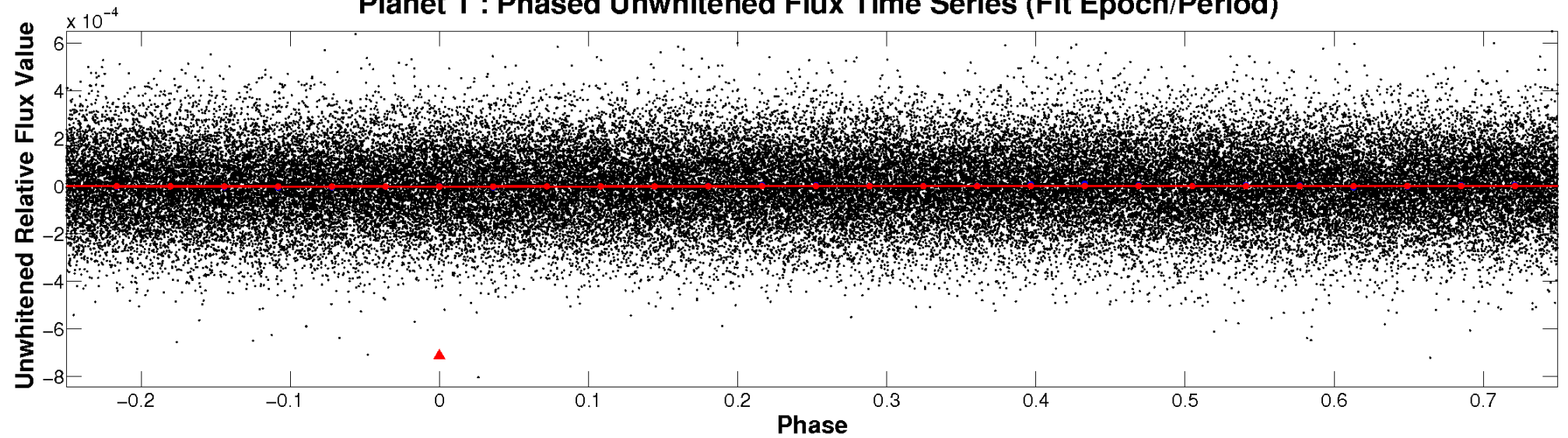
ALT Odd/Even

TCE 007199225-01

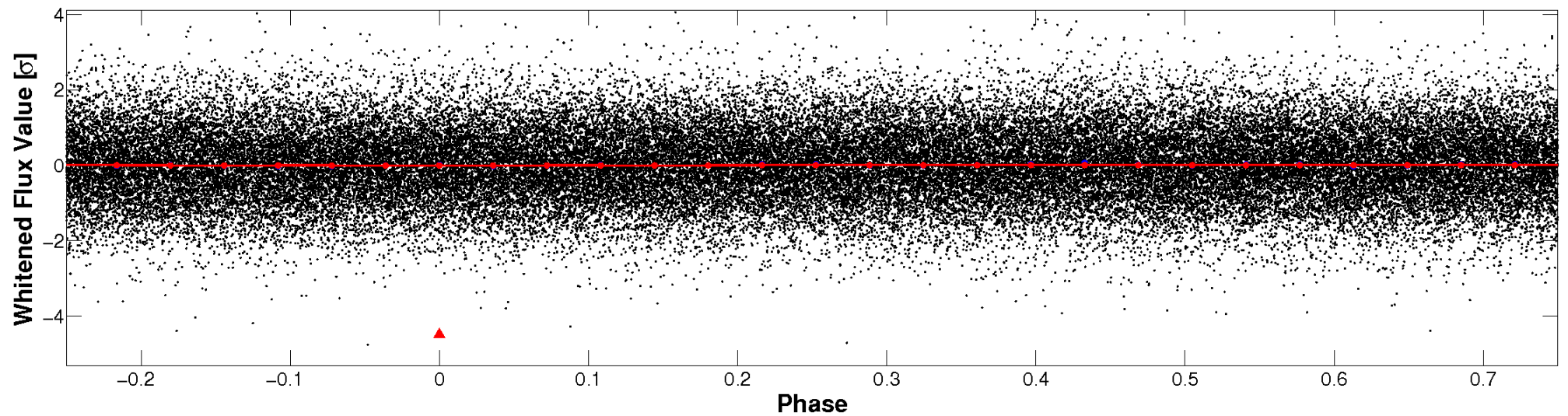


Non-Whitened Vs. Whitened Light Curve

Planet 1 : Phased Unwhitened Flux Time Series (Fit Epoch/Period)

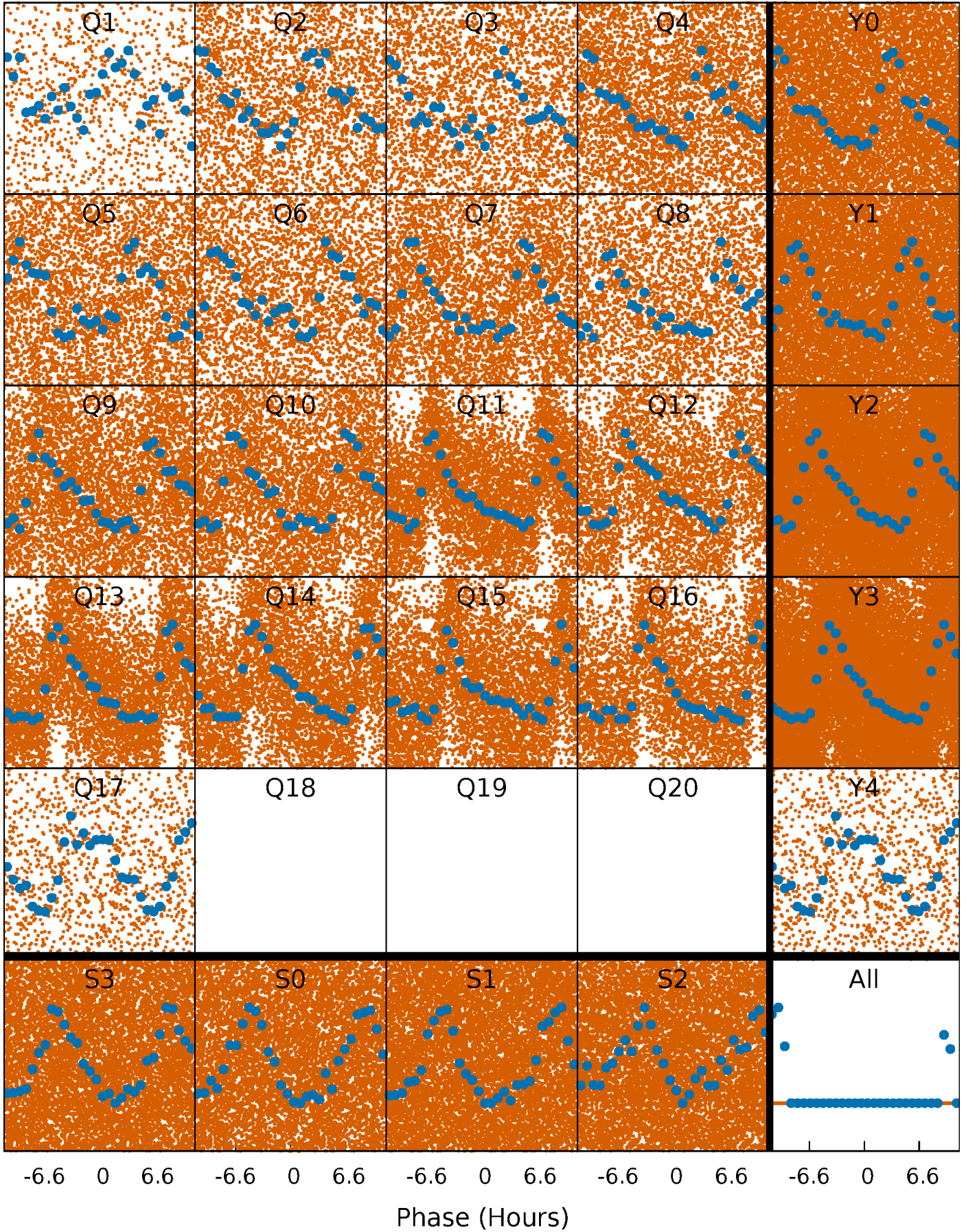


Planet 1 : Phased Whitened Flux Time Series (Fit Epoch/Period)



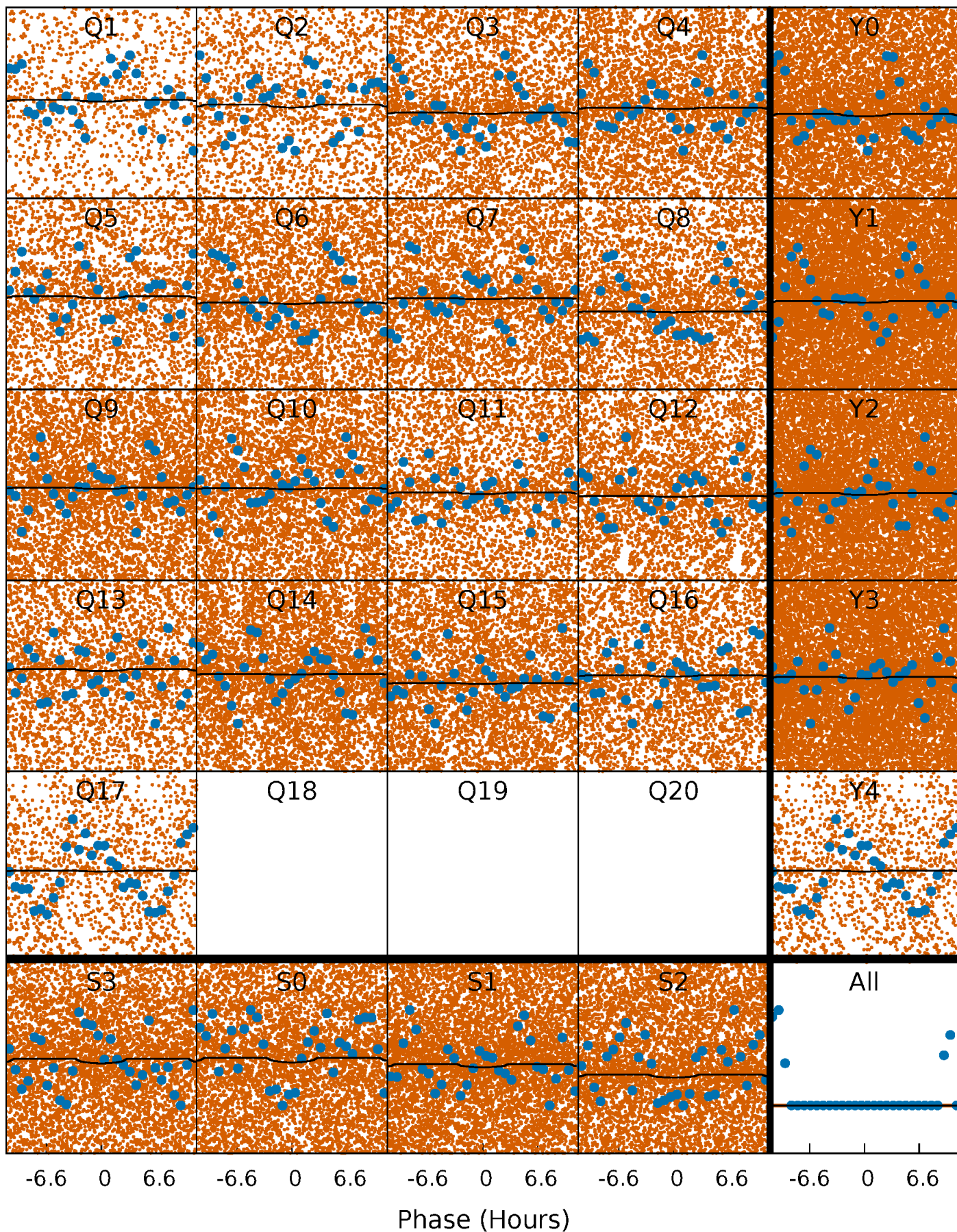
PDC Quarter-Phased Transit Curves

TCE 007199225-01 P= 0.566654 Days $T_0=131.725656$ (BKJD)



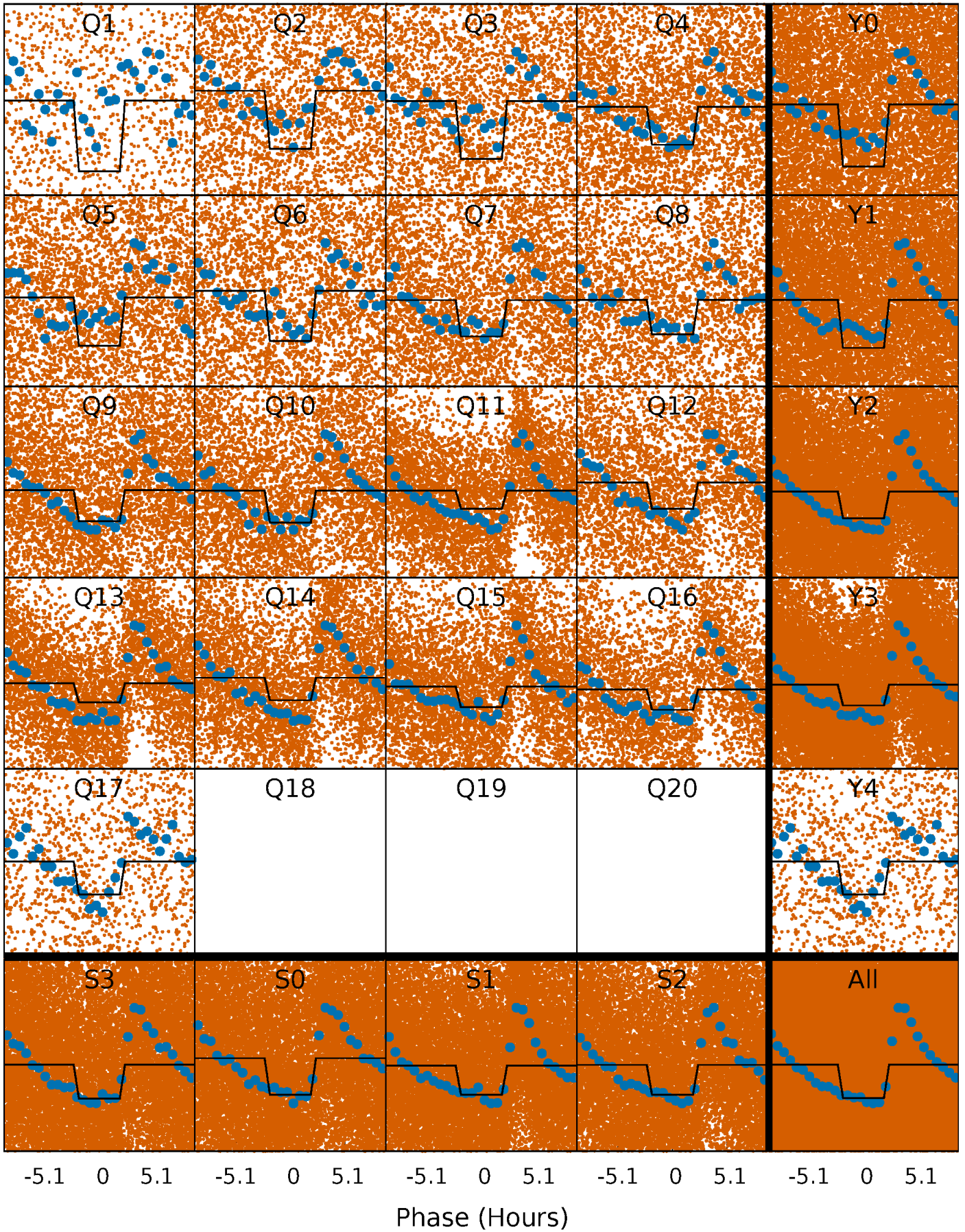
DV Quarter-Phased Transit Curves

TCE 007199225-01 P= 0.566654 Days $T_0=131.725656$ (BKJD)



Alt. Detrend Quarter-Phased Transit Curves

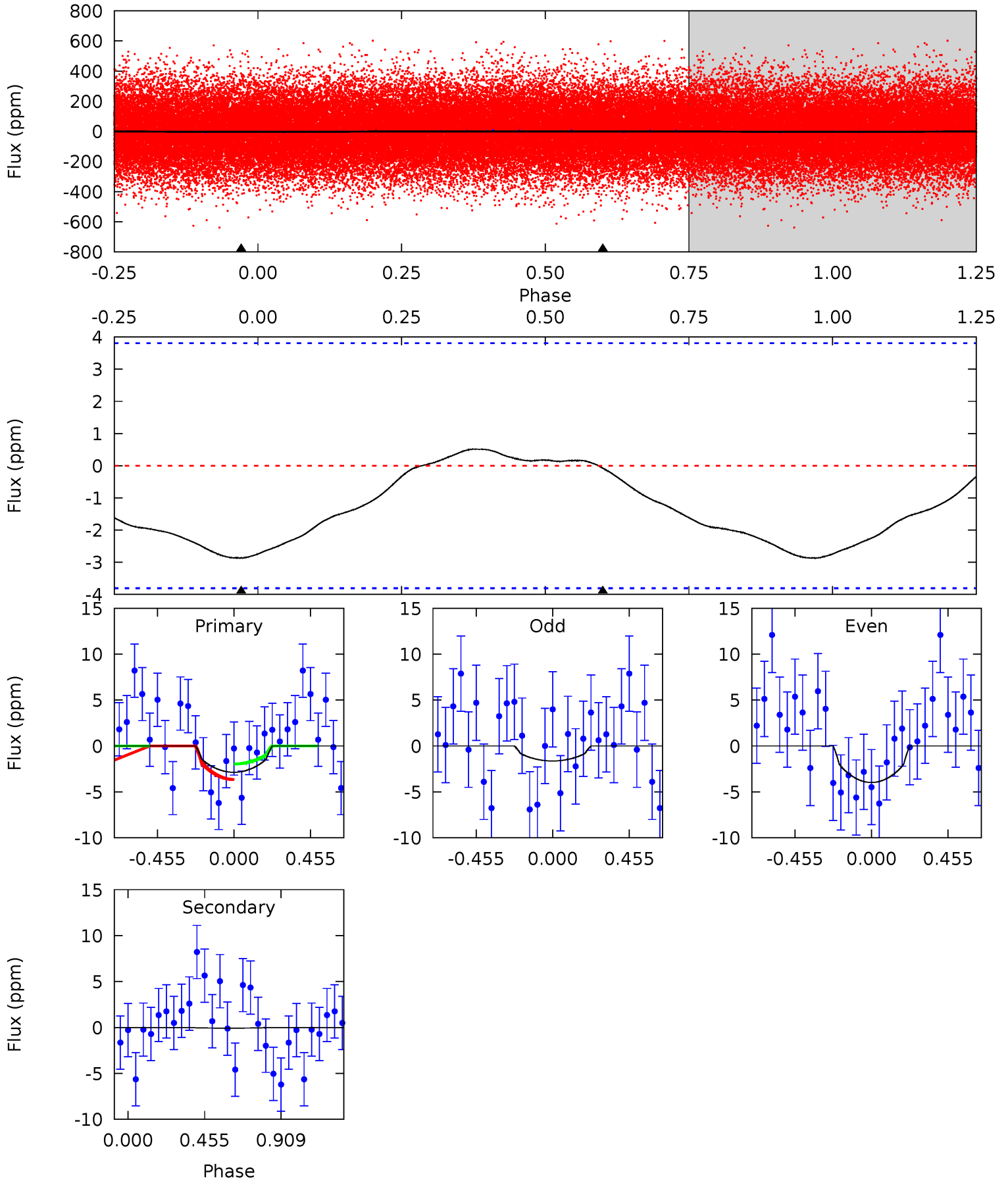
TCE 007199225-01 P= 0.566801 Days $T_0=131.643968$ (BKJD)



DV Model-Shift Uniqueness Test

007199225-01, P = 0.566654 Days, E = 131.159002 Days

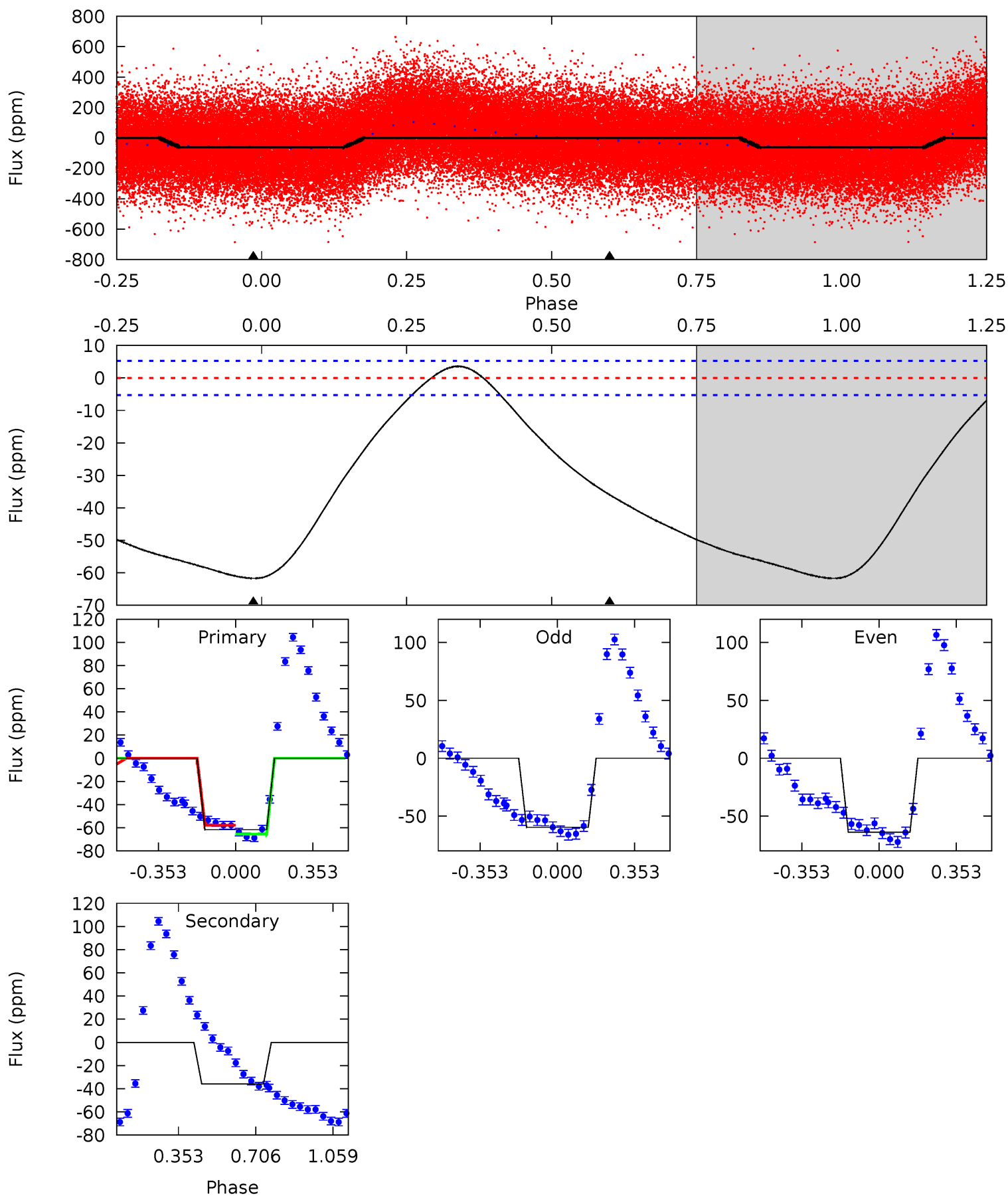
Pri	Sec	Ter	Pos	FA ₁	FA ₂	F _{Red}	Pri-Ter	Pri-Pos	Sec-Ter	Sec-Pos	Odd-Evn	DMM	Shape	TAT
3.19	0.09	0	0	4.24	0.75	0.25	3.19	3.19	0.09	0.09	1.30	0.91	0.15	0.95



Alt Model-Shift Uniqueness Test

007199225-01, P = 0.566801 Days, E = 131.077167 Days

Pri	Sec	Ter	Pos	FA ₁	FA ₂	F _{Red}	Pri-Ter	Pri-Pos	Sec-Ter	Sec-Pos	Odd-Evn	DMM	Shape	TAT
50.4	29.4	0	0	4.29	0.93	3.05	50.4	50.4	29.4	29.4	1.71	1.01	0.05	3.64



Stellar Parameters For KIC 007199225

	$T_{\text{eff}} (K)$	$\log(g)$	$[\text{Fe}/\text{H}]$	$R (R_{\odot})$	$M (M_{\odot})$	$p_{\star} (\text{g}\cdot\text{cm}^{-3})$
	4902^{+66}_{-73}	$3.538^{+0.135}_{-0.121}$	$0.160^{+0.100}_{-0.150}$	$3.139^{+0.514}_{-0.571}$	$1.241^{+0.129}_{-0.210}$	$0.057^{+0.038}_{-0.019}$
	+1%/-1%	+4%/-3%	+62%/-94%	+16%/-18%	+10%/-17%	+68%/-34%
Source	SPE68	SPE68	SPE68	DSEP		

KIC = Kepler Input Catalog; PHO = Photometry; SPE = Spectroscopy; AST = Asteroseismology
 TRA = Transits; DESP = Dartmouth Models; MULT = Multiple Models

Secondary Eclipse Parameters for KIC 007199225-01 / KOI

Detrend	Depth (ppm)	$R_p (R_{\oplus})$	$T_{\text{max}} (K)$	$T_{\text{obs}} (K)$	A_{obs}
DV	-0 ± 1	$1.50^{+1.76}_{-1.02}$	4463^{+226}_{-206}	-3899^{+329}_{-239}	$0.004^{+0.097}_{-0.051}$
Alt.	-36 ± 1	$2.78^{+2.04}_{-1.64}$	4462^{+218}_{-219}	3703^{+2580}_{-7122}	$0.526^{+2.504}_{-0.350}$

T_{max} = Theoretical Maximum Planetary Temperature

T_{obs} = Observed Planetary Temperature (Assuming $A=0.3$)

A_{obs} = Observed Albedo (Assuming $T=0$)

If a secondary eclipse is present, the system is likely an EB if $T_{\text{obs}} \gg T_{\text{max}}$ AND $A_{\text{obs}} \gg 1.0$

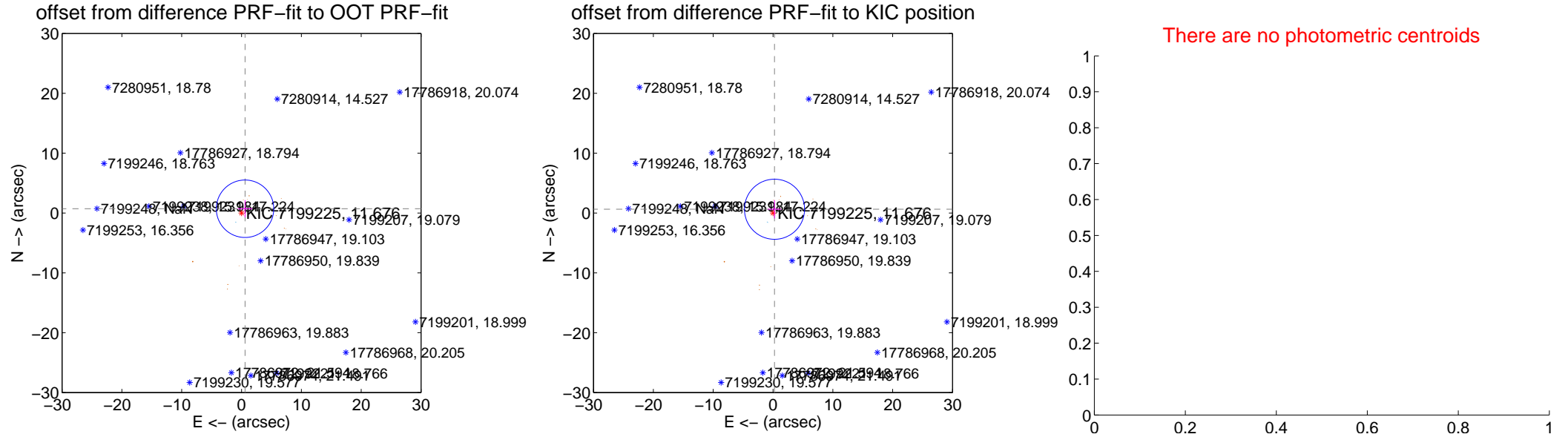
DV Centroid Data

Supplemental centroid analysis for 007199225-01. **Kepler magnitude: 11.68.** Transit SNR 0.88

There are 2 quarters with good PRF difference image offsets

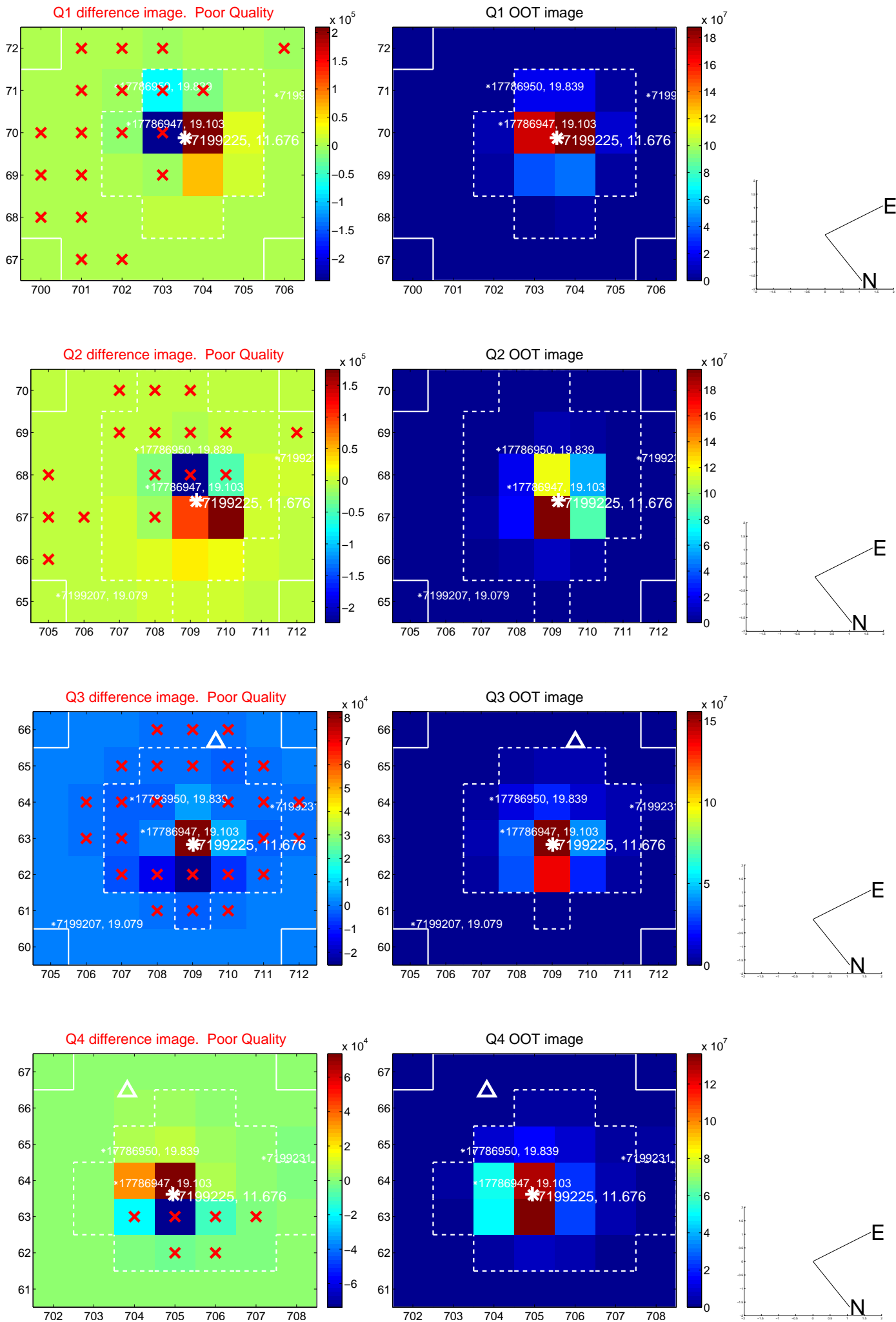
The direct PRF centroid is offset from the target star catalog position by about 0.10 arcsec

	Distance in arcsec	Distance / σ	Δ RA	Δ Dec
PRF-fit source offset from OOT	0.921 ± 1.600	0.58	-0.584 ± 1.211	0.712 ± 1.442
PRF-fit source offset from KIC position	0.676 ± 1.674	0.40	-0.249 ± 1.109	0.629 ± 1.524
photometric centroid source offset	—	—	—	—

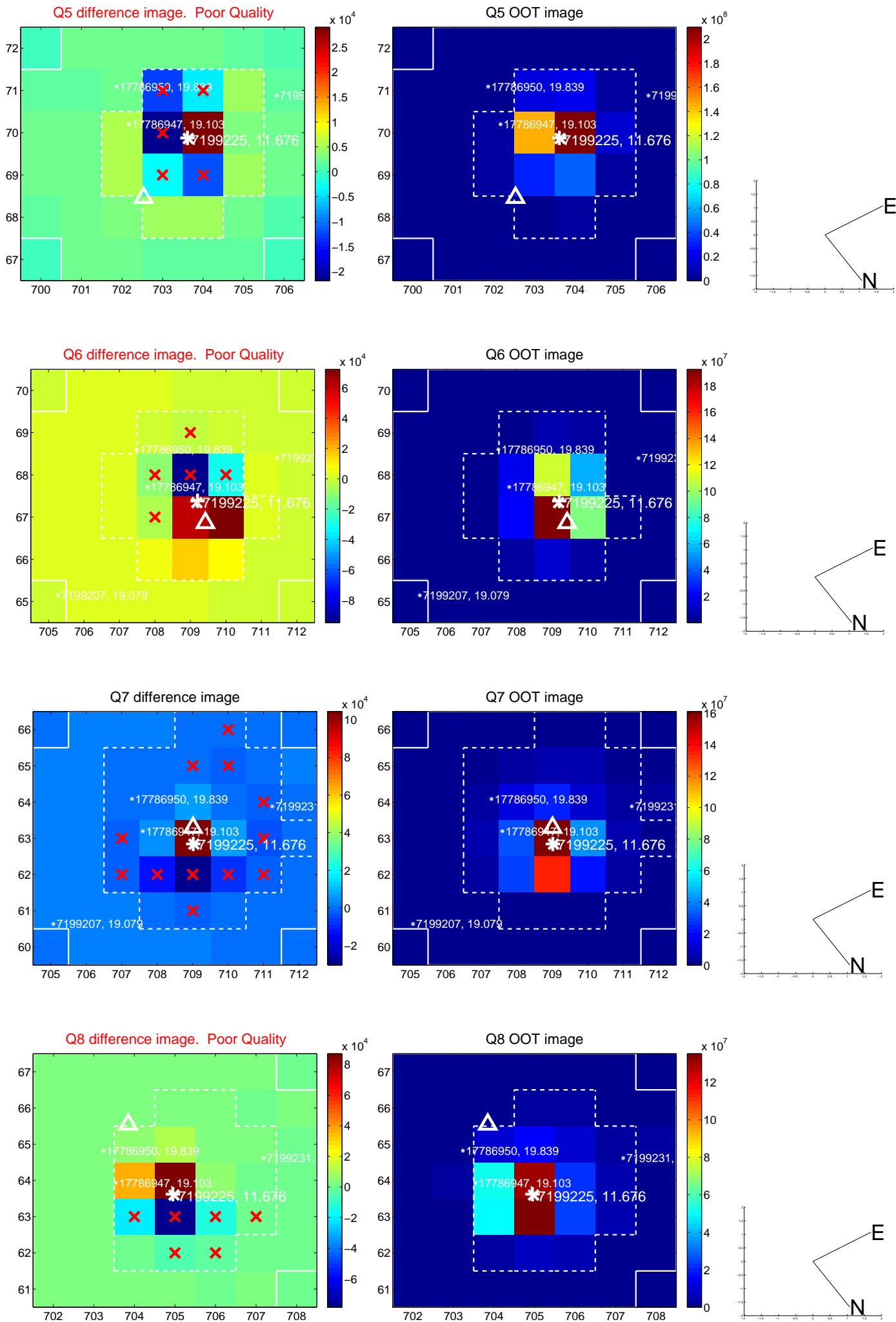


Centroid source offsets from the target star reconstructed from PRF and photometric centroids. **Sky blue crosses: good quarterly centroid offsets; Vermillion crosses: bad quarterly centroid offsets;** magenta cross: average over quarters. Length of the crosses: one- σ uncertainty. Blue circle: three- σ . Red *: target star. Blue *: Other stars. Text next to a star gives its KIC ID and kepmag. KIC IDs > 15,000,000 are from the UKIRT catalog.

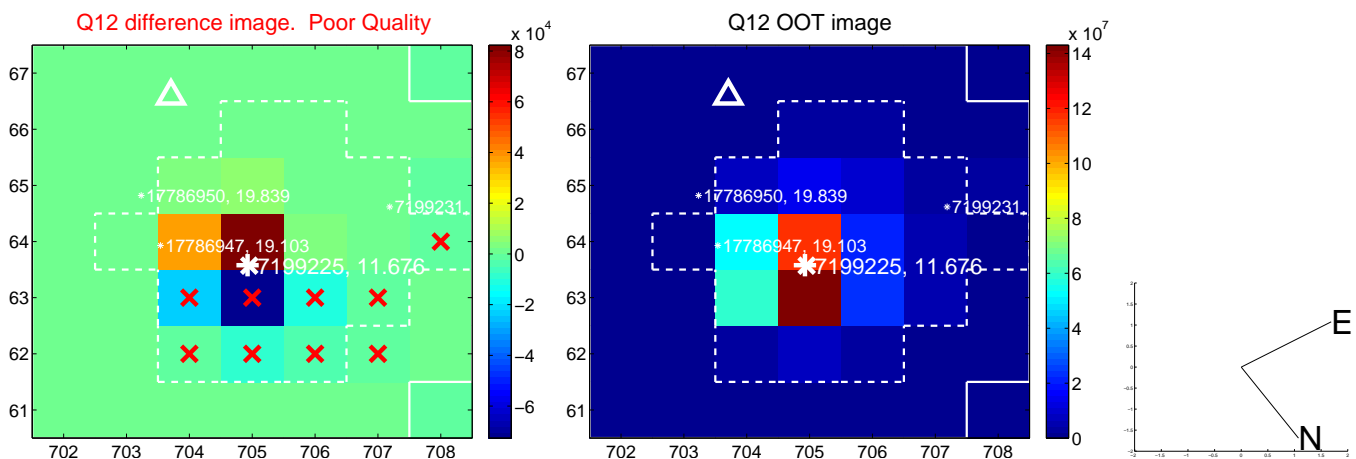
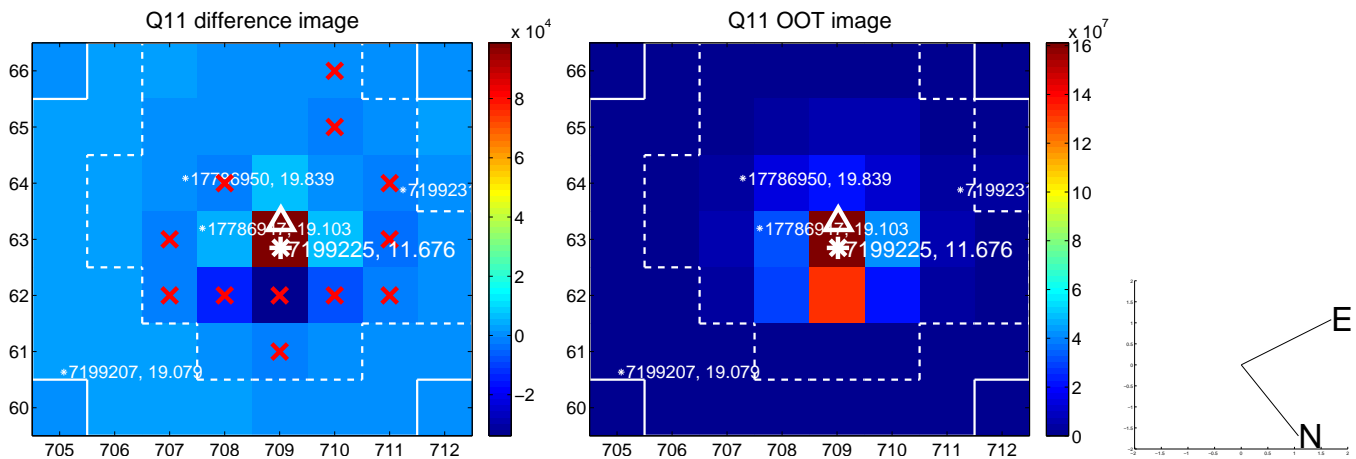
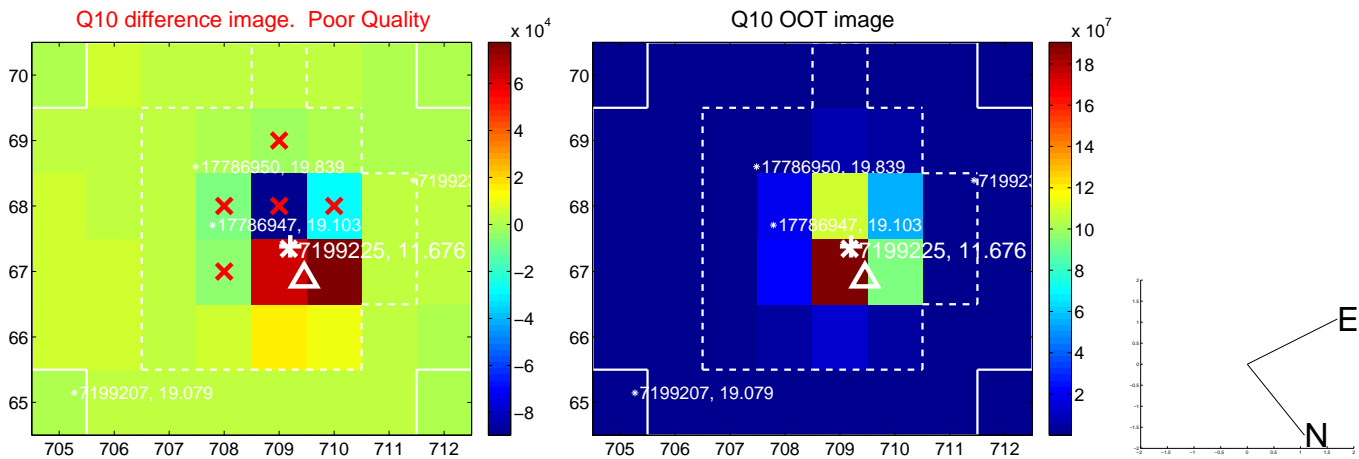
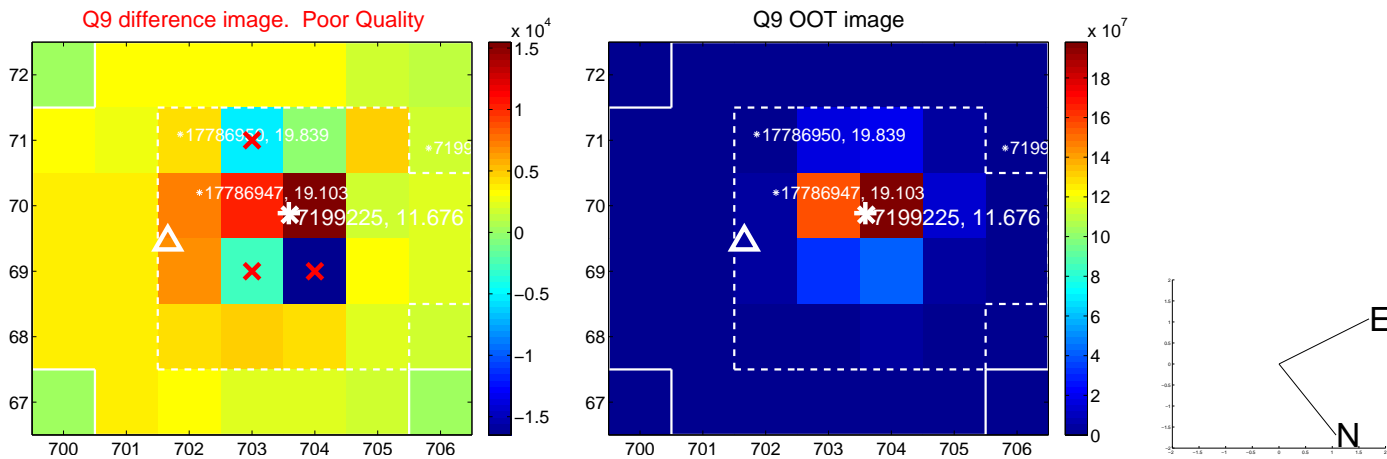
white \times : KIC target position; $+$: OOT centroid; \triangle : difference centroid. red \times : large negative pixel value.



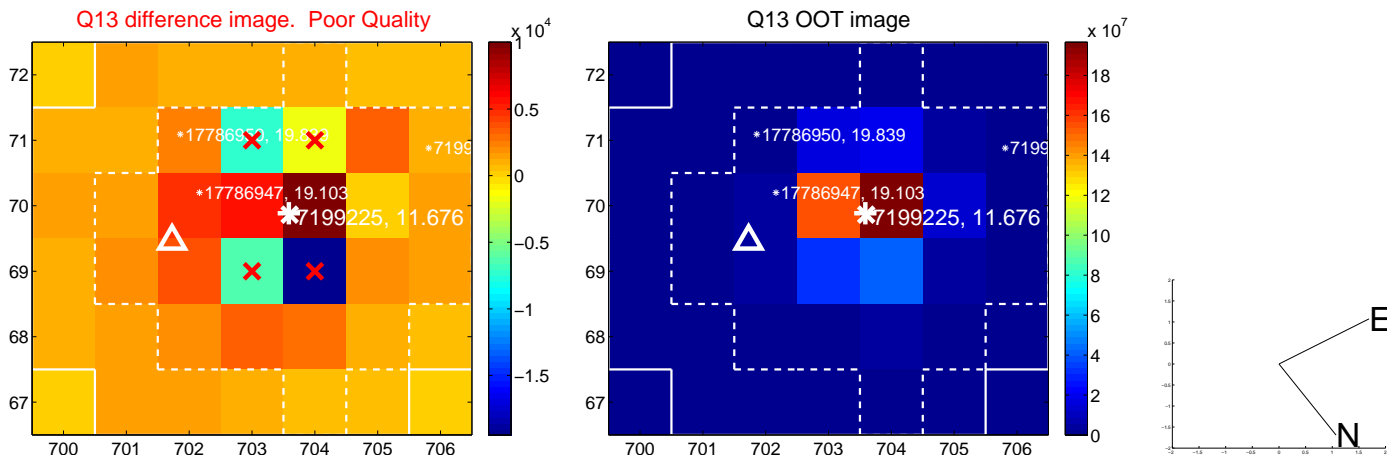
white \times : KIC target position; $+$: OOT centroid; \triangle : difference centroid. red \times : large negative pixel value.



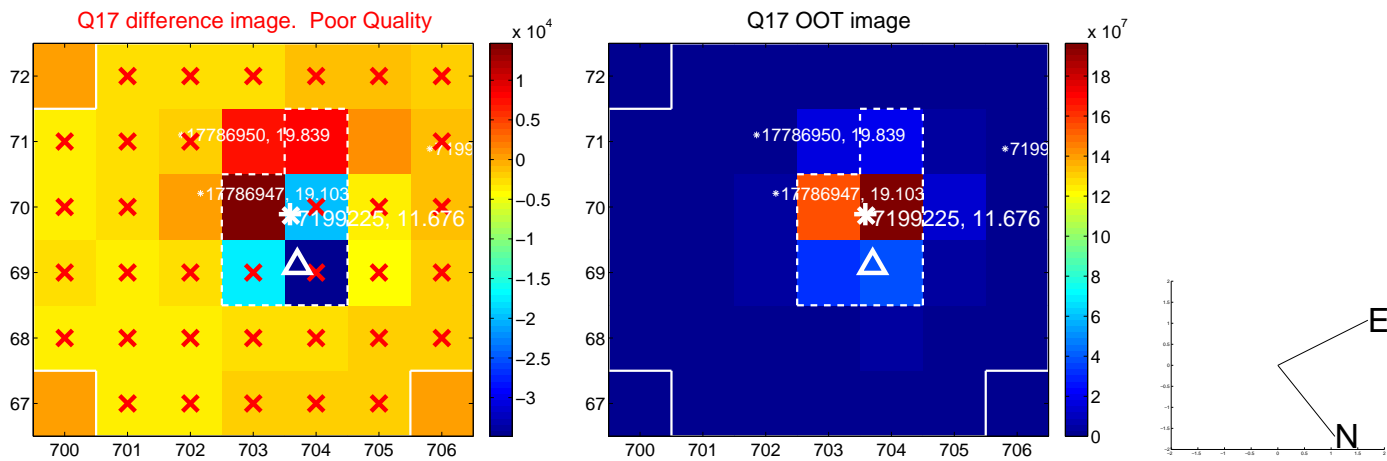
white \times : KIC target position; +: OOT centroid; \triangle : difference centroid. red \times : large negative pixel value.



white \times : KIC target position; +: OOT centroid; \triangle : difference centroid. red \times : large negative pixel value.



white \times : KIC target position; $+$: OOT centroid; \triangle : difference centroid. red \times : large negative pixel value.



folded centroid time series figure for this object.

UKIRT Image

