

KIC 007199036

Q1-17 DR25 TCE Parameters

TCE	Run Type	KOI?	Period (Days)	Epoch (BKJD)	Depth (ppm)	Duration (Hours)	MES	SNR	R_{\star} (R_{\odot})	T_{\star} (K)	R_p (R_{\oplus})	S_p (S_{\oplus})
007199036-01	OBS	No	1.136992	131.868848	312.4	13.644	315.4	45.4	1.00	6055	2.20	2526.47

Robovetter Results

TCE	Run Type	Disp	Score	N	S	C	E	Comments
007199036-01	OBS	FP	0.00	1	0	0	0	LPP_DV—LPP_ALT—MOD_NONUNIQ_ALT—MOD_TER_ALT—CENT_FEW_DIFFS

Notes: OBS = Observed. INJ = Injected. INV = Inverted. SCR = Scrambled.

N = Not Transit-Like. S = Stellar Eclipse. C = Centroid Offset. E = Ephemeris Match.

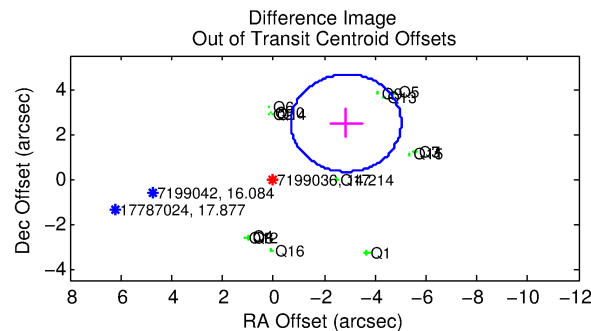
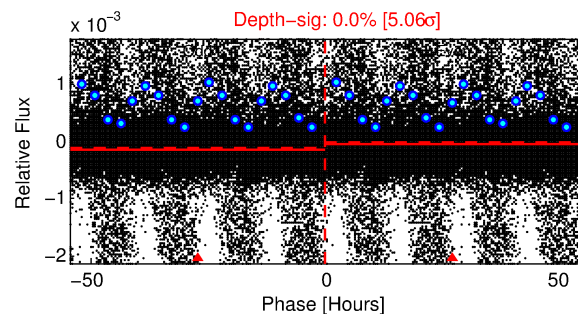
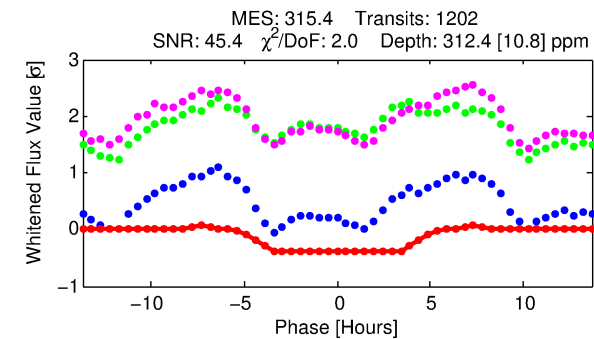
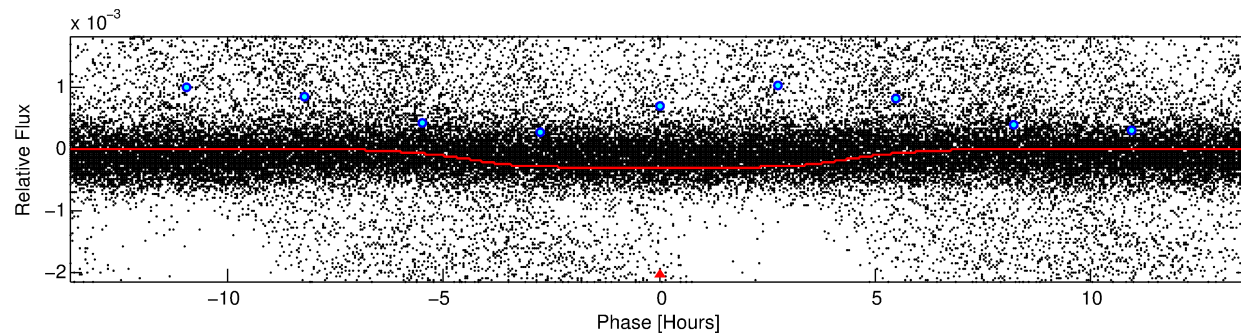
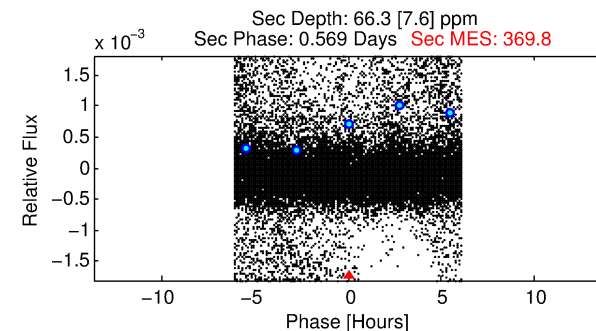
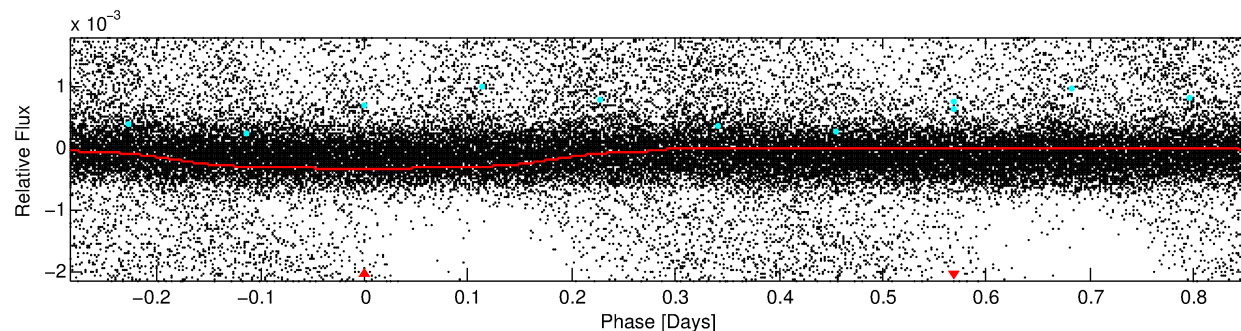
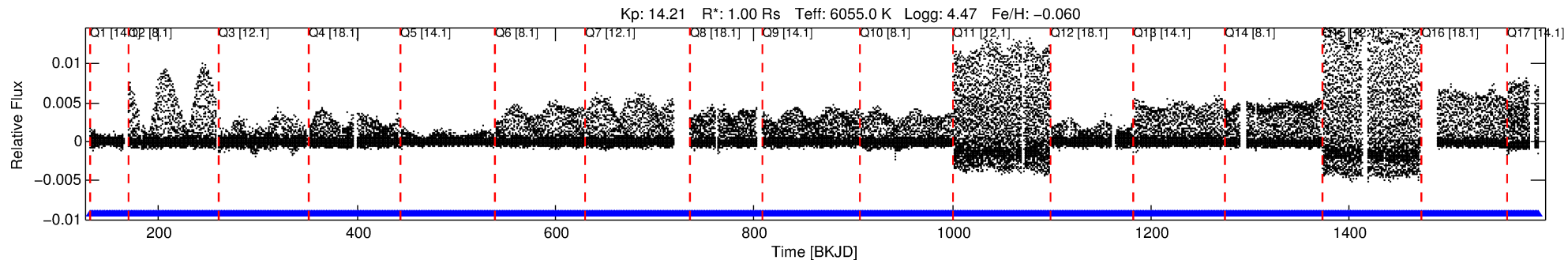
See http://exoplanetarchive.ipac.caltech.edu/docs/API_kepcandidate_columns.html#proj_disp_col for comment definitions.

Ephemeris Match Information For 007199036-01

No Significant Match Found

DV One-Page Summary

KIC: 7199036 Candidate: 1 of 1 Period: 1.137 d



DV Fit Results:

Period = 1.13699 [0.00001] d
Epoch = 131.8688 [0.0045] BKJD
Rp/R* = 0.0203 [0.0004]
a/R* = 1.01 [0.00]
b = 0.95 [0.01]
Seff = 2526.47 [1069.74]
Teq = 1808 [191] K
Rp = 2.20 [0.73] Re
a = 0.0217 [0.0060] AU
Ag = 3.56 [1.48] [1.73σ]
Teff = 3839 [180] K [7.72σ]

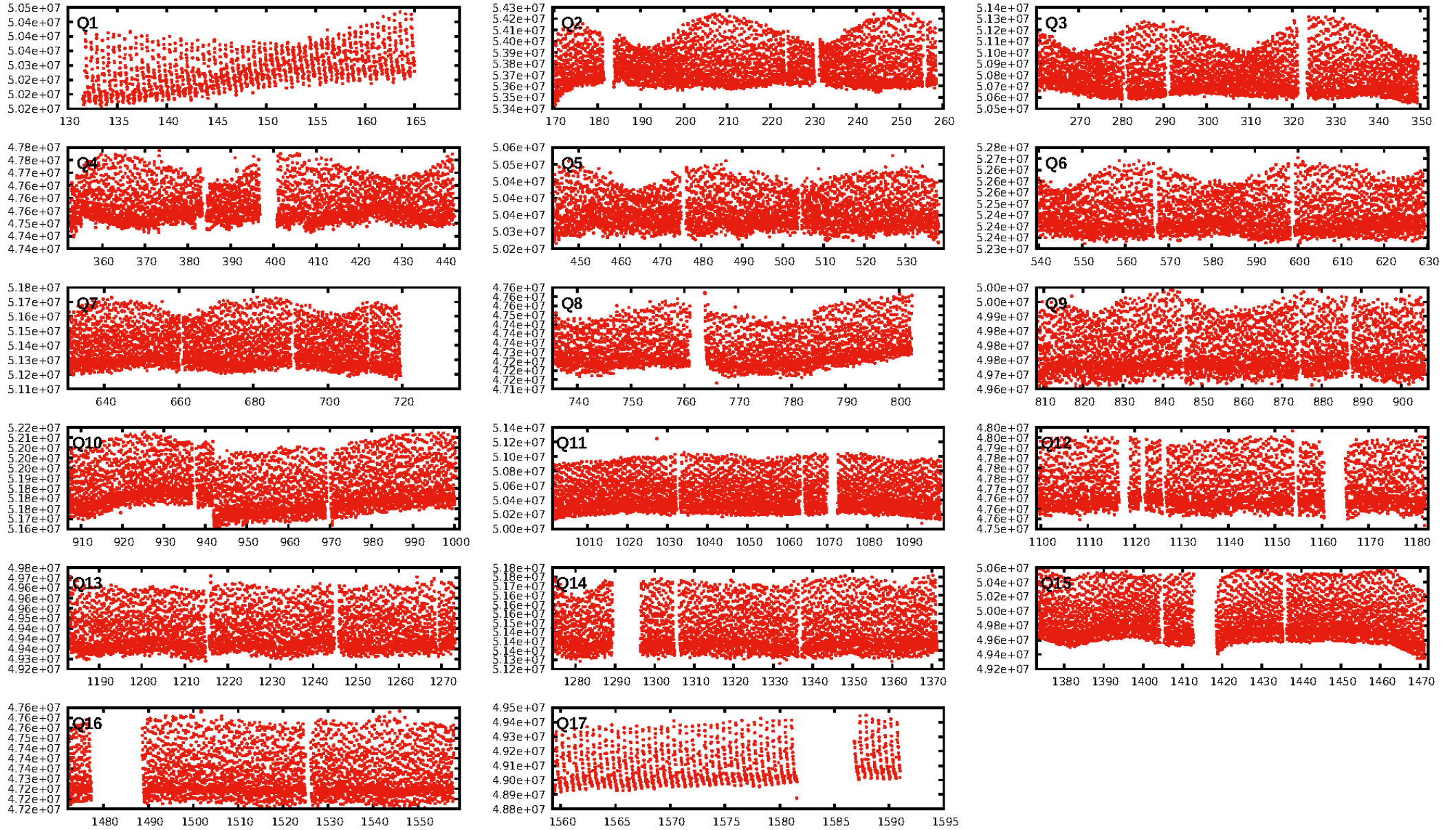
DV Diagnostic Results:

ShortPeriod-sig: N/A
LongPeriod-sig: N/A
ModelChiSquare2-sig: N/A
ModelChiSquareGof-sig: N/A
Bootstrap-pfa: N/A
RollingBand-fgt: 1.00 [1148/1148]
GhostDiagnostic-chr: N/A
Centroid-sig: N/A
Centroid-so: N/A
OotOffset-rm: 3.791 arcsec [5.25σ]
KicOffset-rm: 3.728 arcsec [5.13σ]
OotOffset-st: 4/4/4/5 [17]
KicOffset-st: 4/4/4/5 [17]
DiffImageQuality-fgm: 0.29 [5/17]
DiffImageOverlap-fno: 1.00 [17/17]

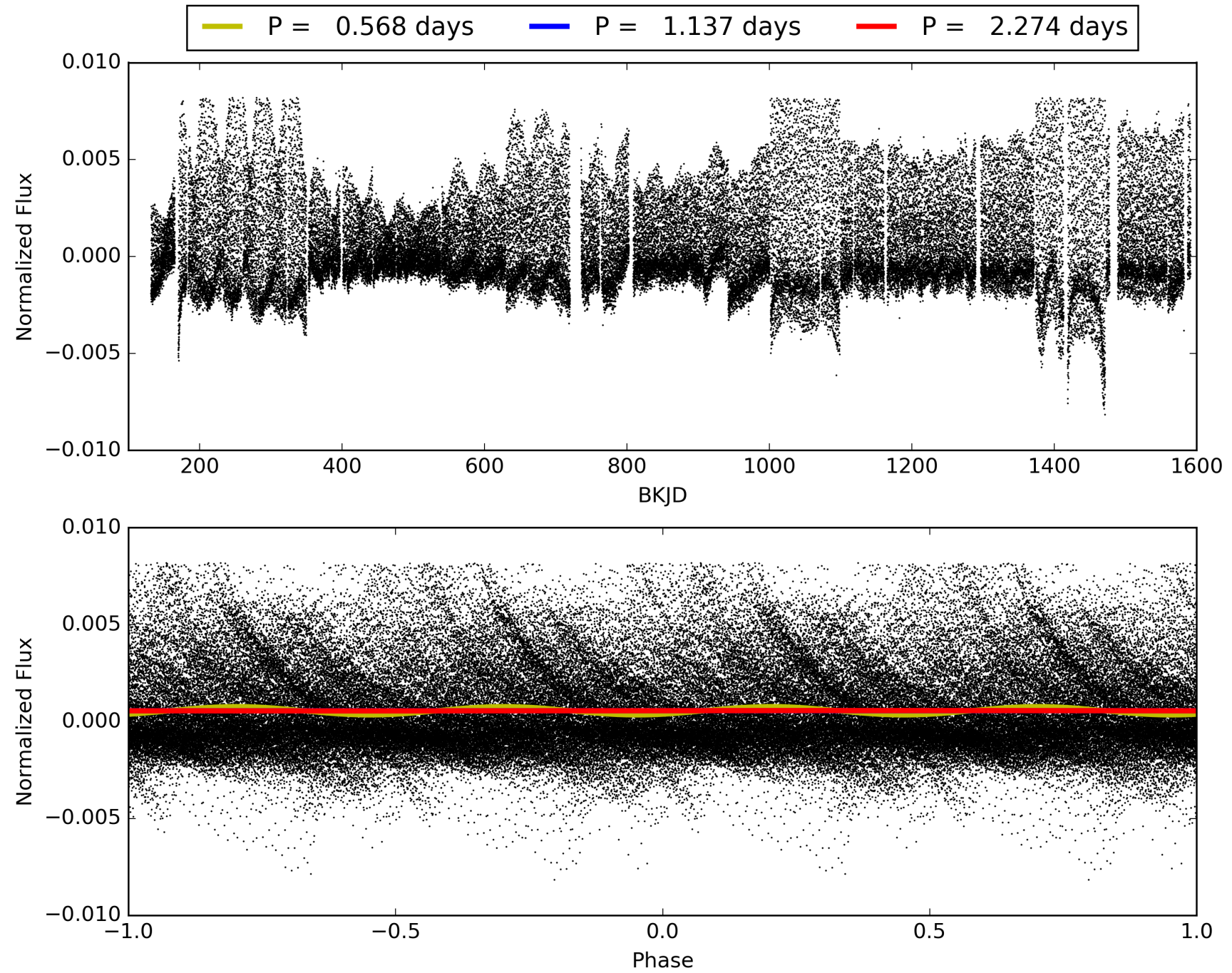
Software Revision: svn+ssh://murzim/repo/soc/tags/release/9.3.42@60958 -- Date Generated: 30-Jan-2016 17:13:32 Z

This Data Validation Report Summary was produced in the Kepler Science Operations Center Pipeline at NASA Ames Research Center

TCE 007199036-01, PDC Light Curves

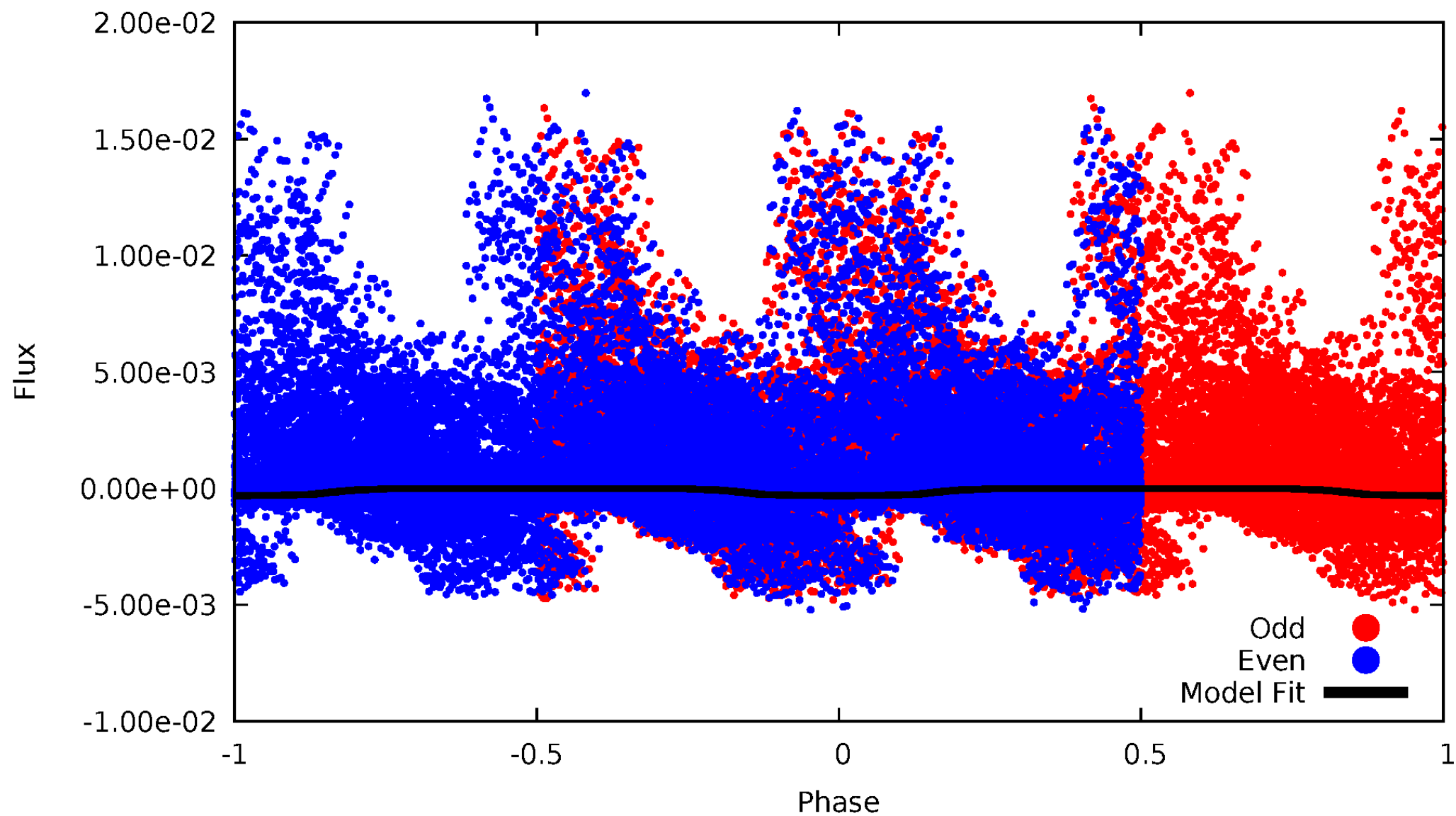


TCE 007199036-01



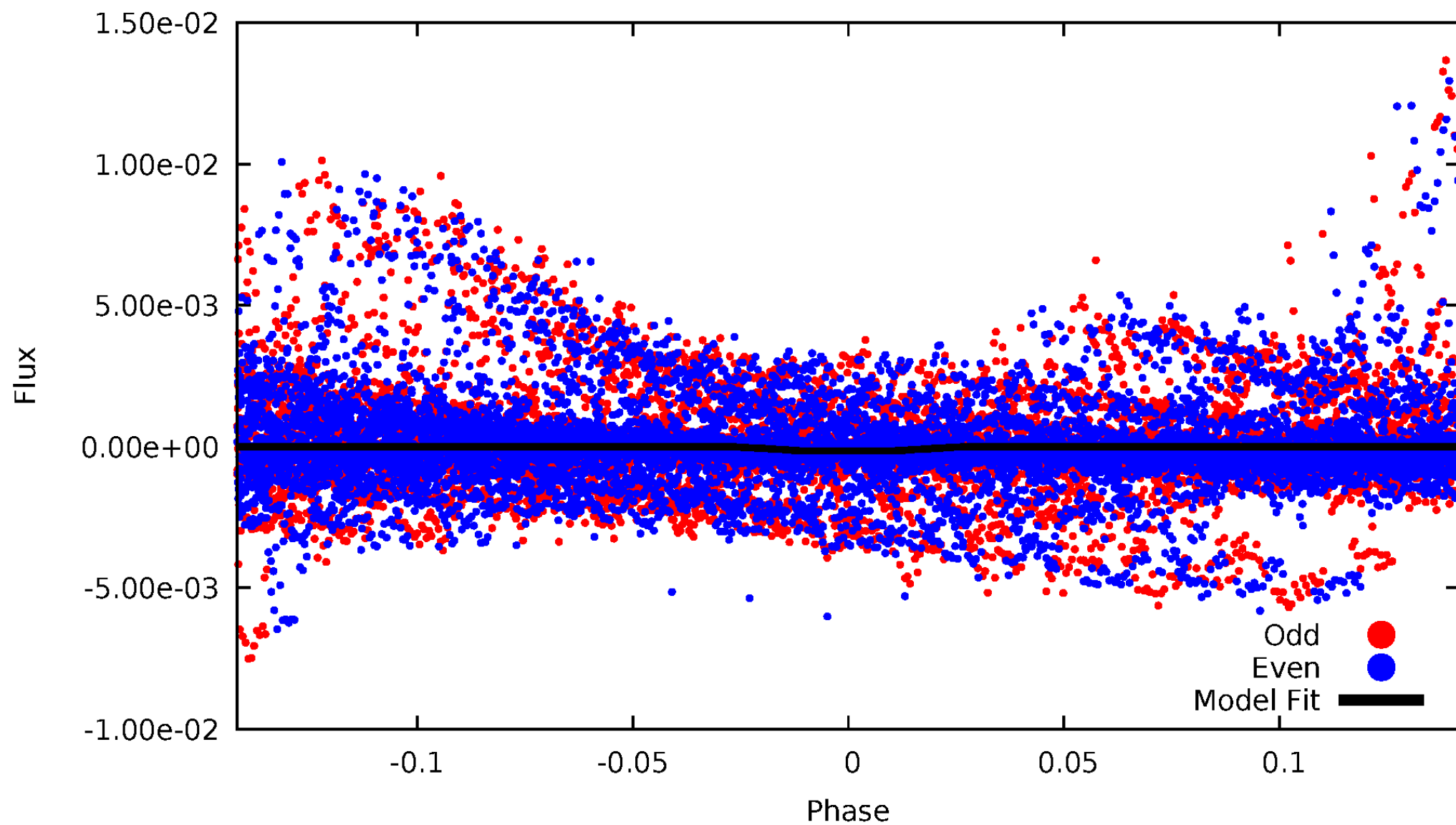
DV Odd/Even

TCE 007199036-01



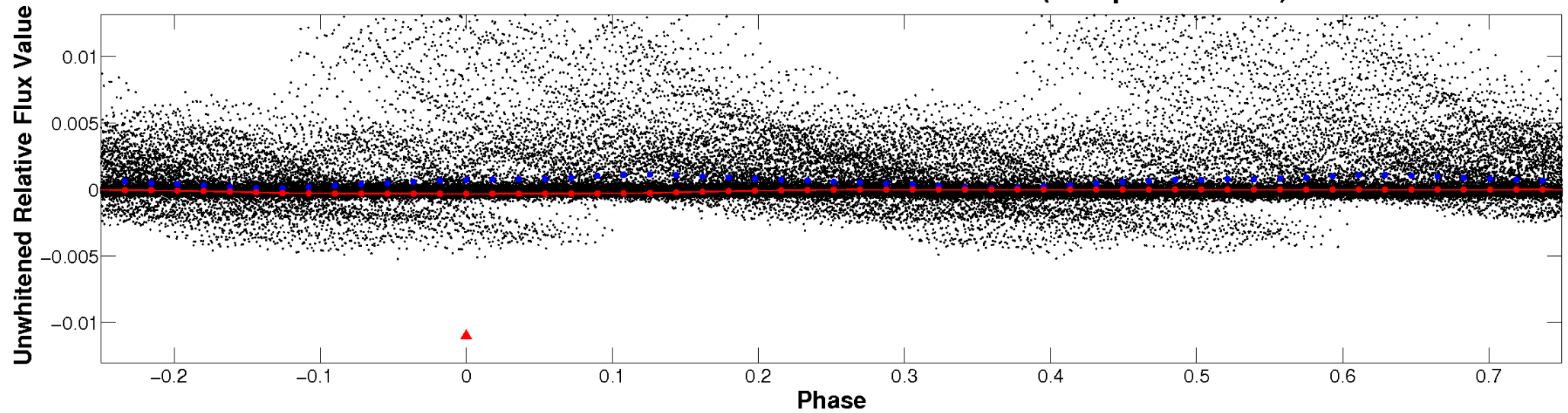
ALT Odd/Even

TCE 007199036-01

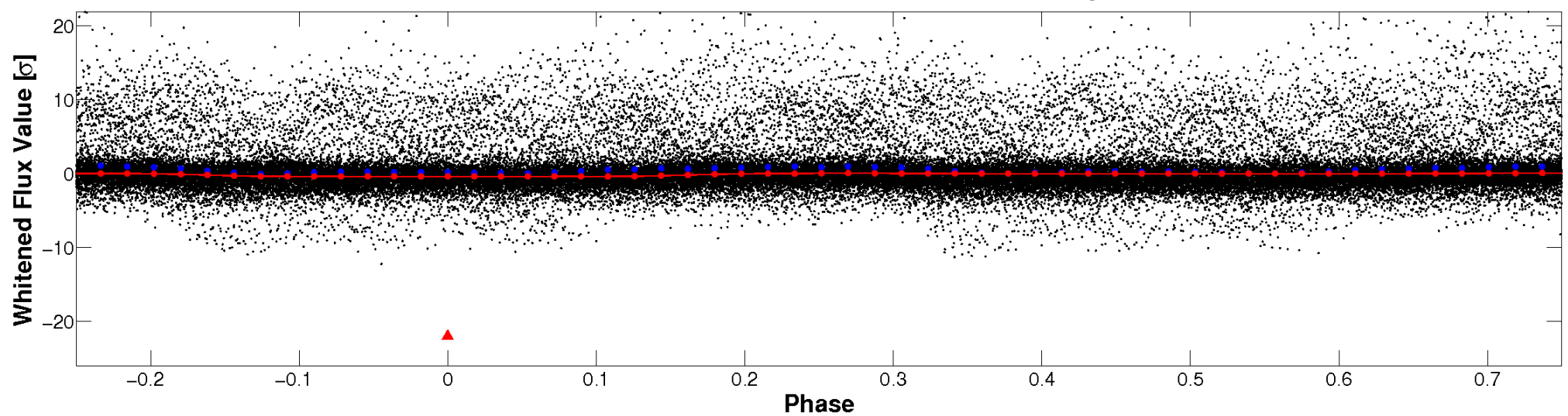


Non-Whitened Vs. Whitened Light Curve

Planet 1 : Phased Unwhitened Flux Time Series (Fit Epoch/Period)

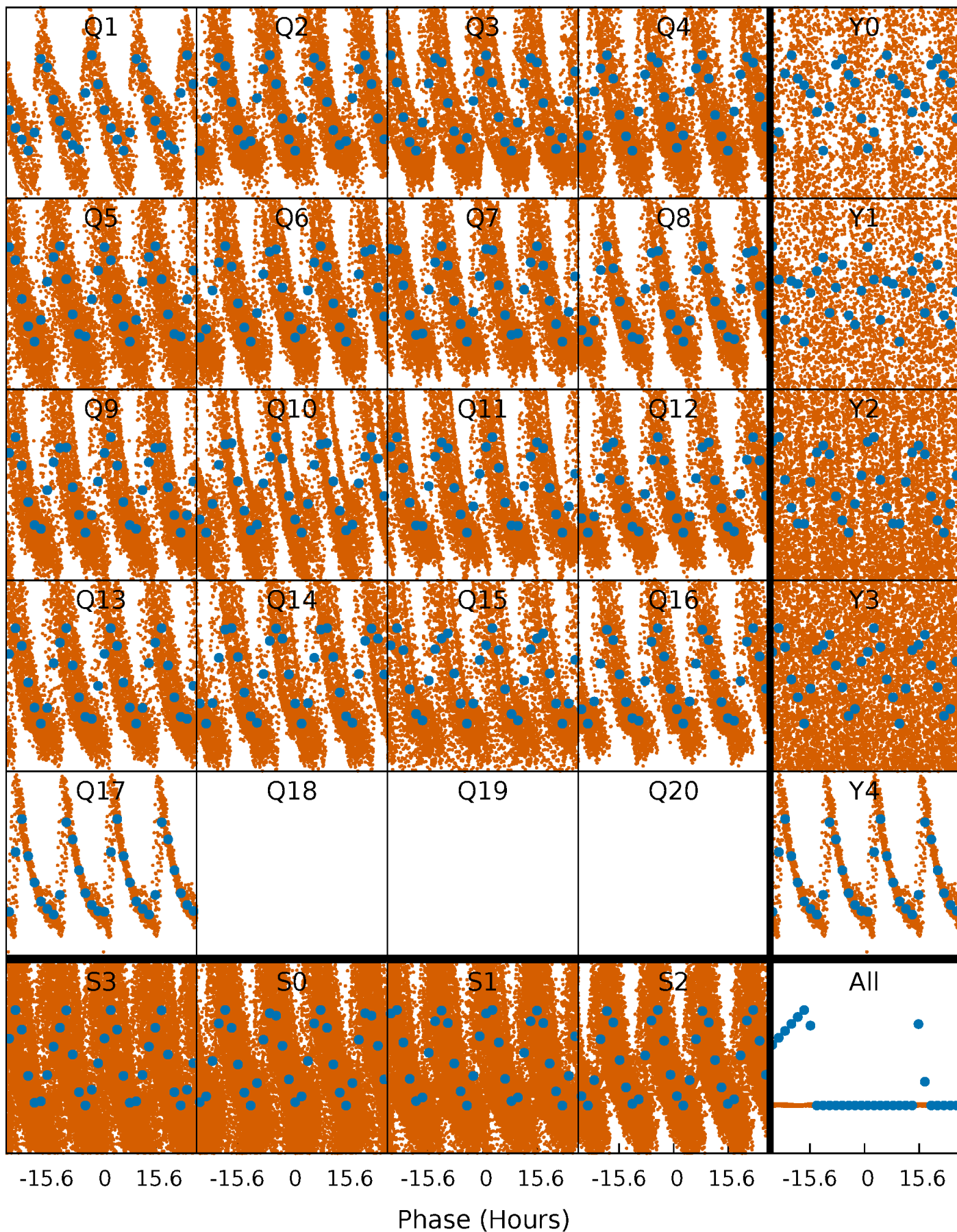


Planet 1 : Phased Whitened Flux Time Series (Fit Epoch/Period)



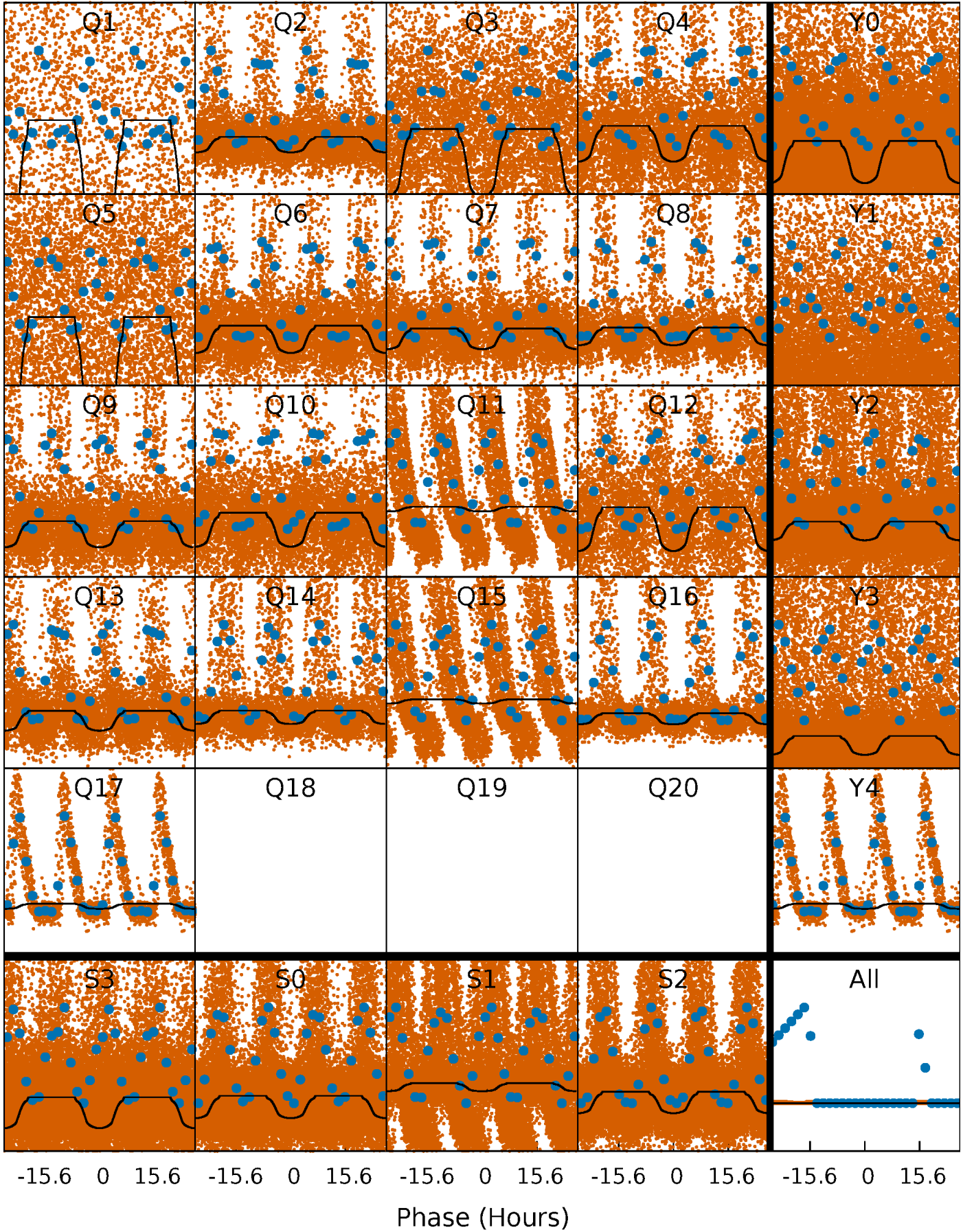
PDC Quarter-Phased Transit Curves

TCE 007199036-01 P= 1.136992 Days $T_0=131.868848$ (BKJD)



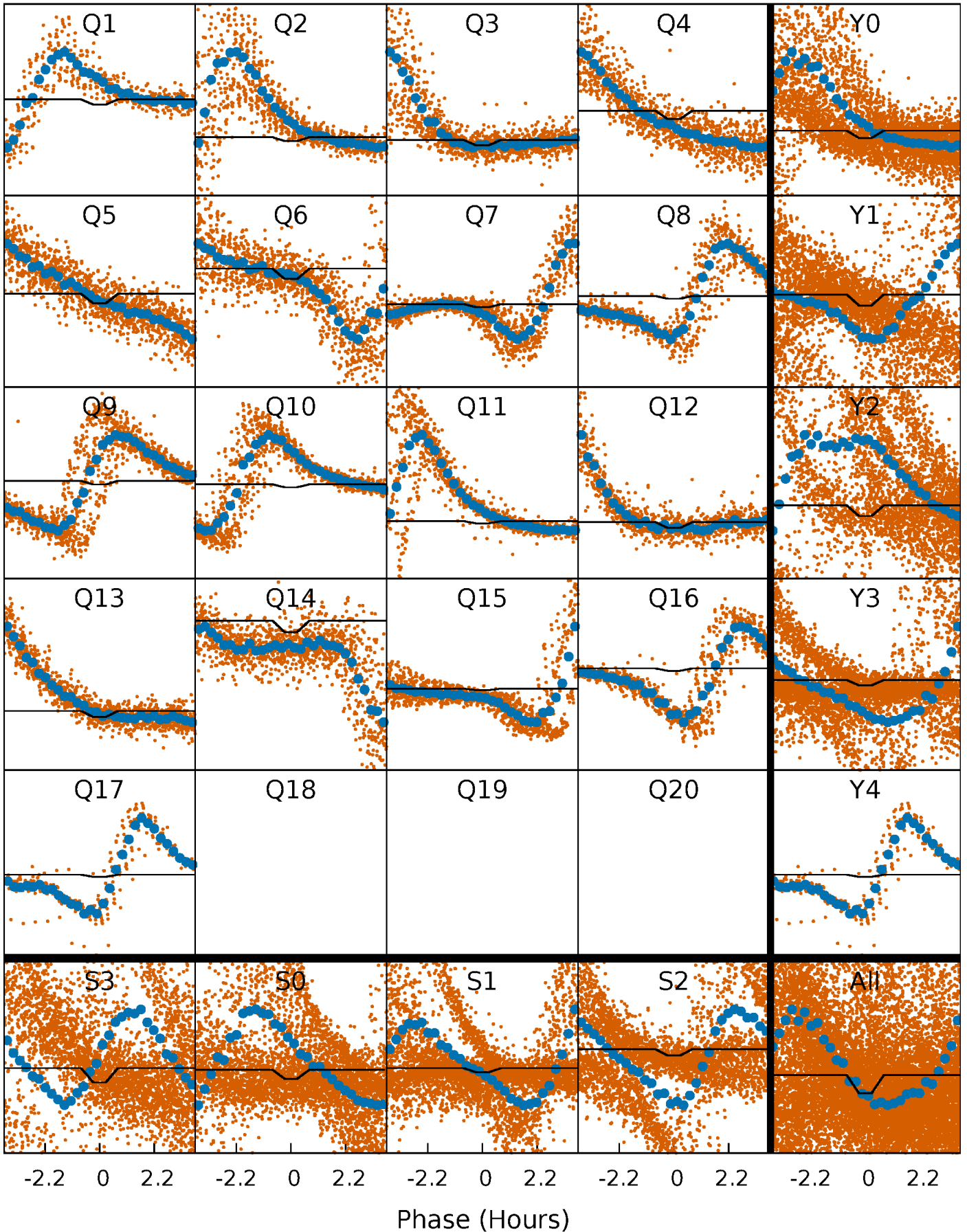
DV Quarter-Phased Transit Curves

TCE 007199036-01 P= 1.136992 Days $T_0=131.868848$ (BKJD)



Alt. Detrend Quarter-Phased Transit Curves

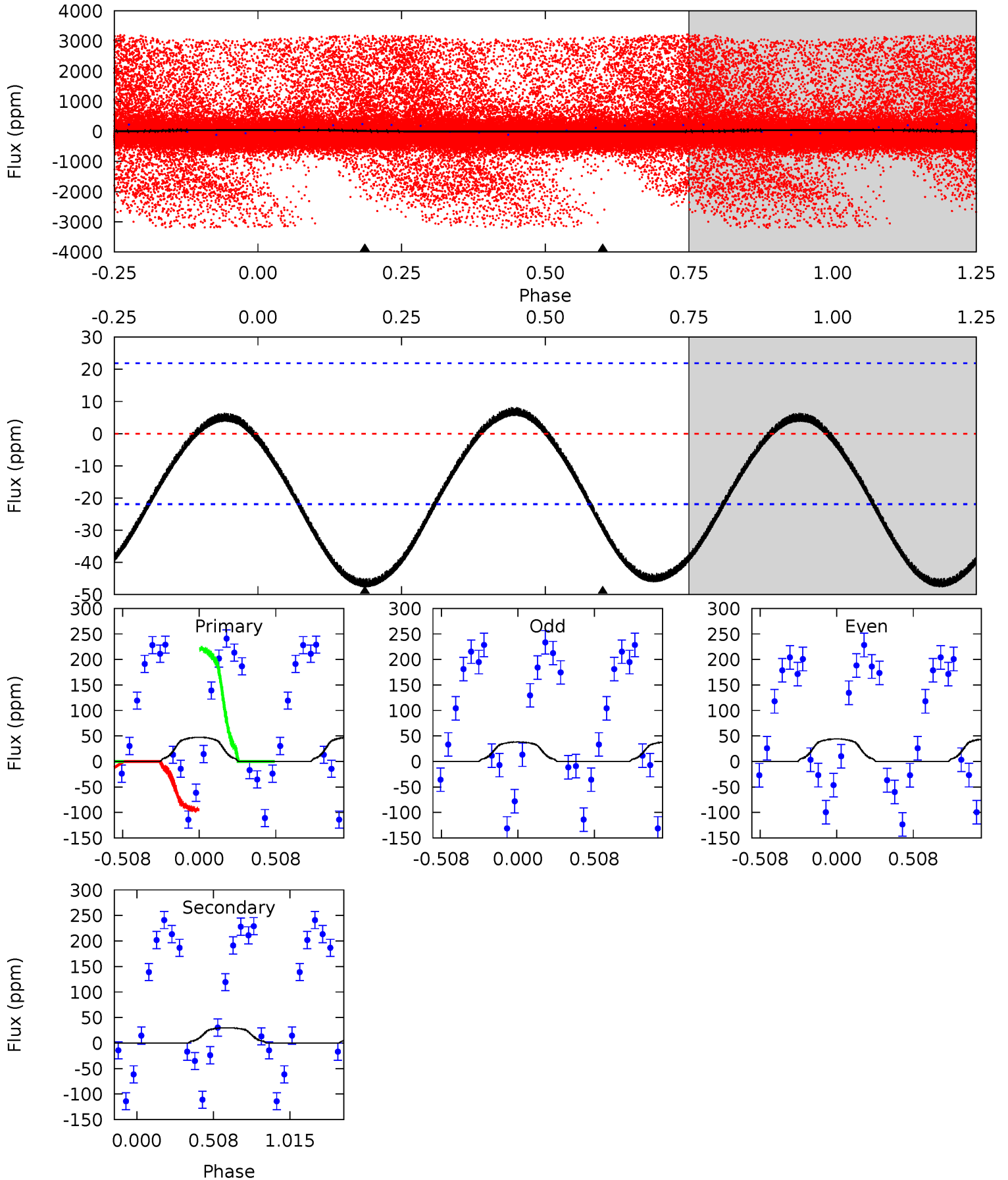
TCE 007199036-01 P= 1.134400 Days $T_0=131.828708$ (BKJD)



DV Model-Shift Uniqueness Test

007199036-01, P = 1.136992 Days, E = 130.731856 Days

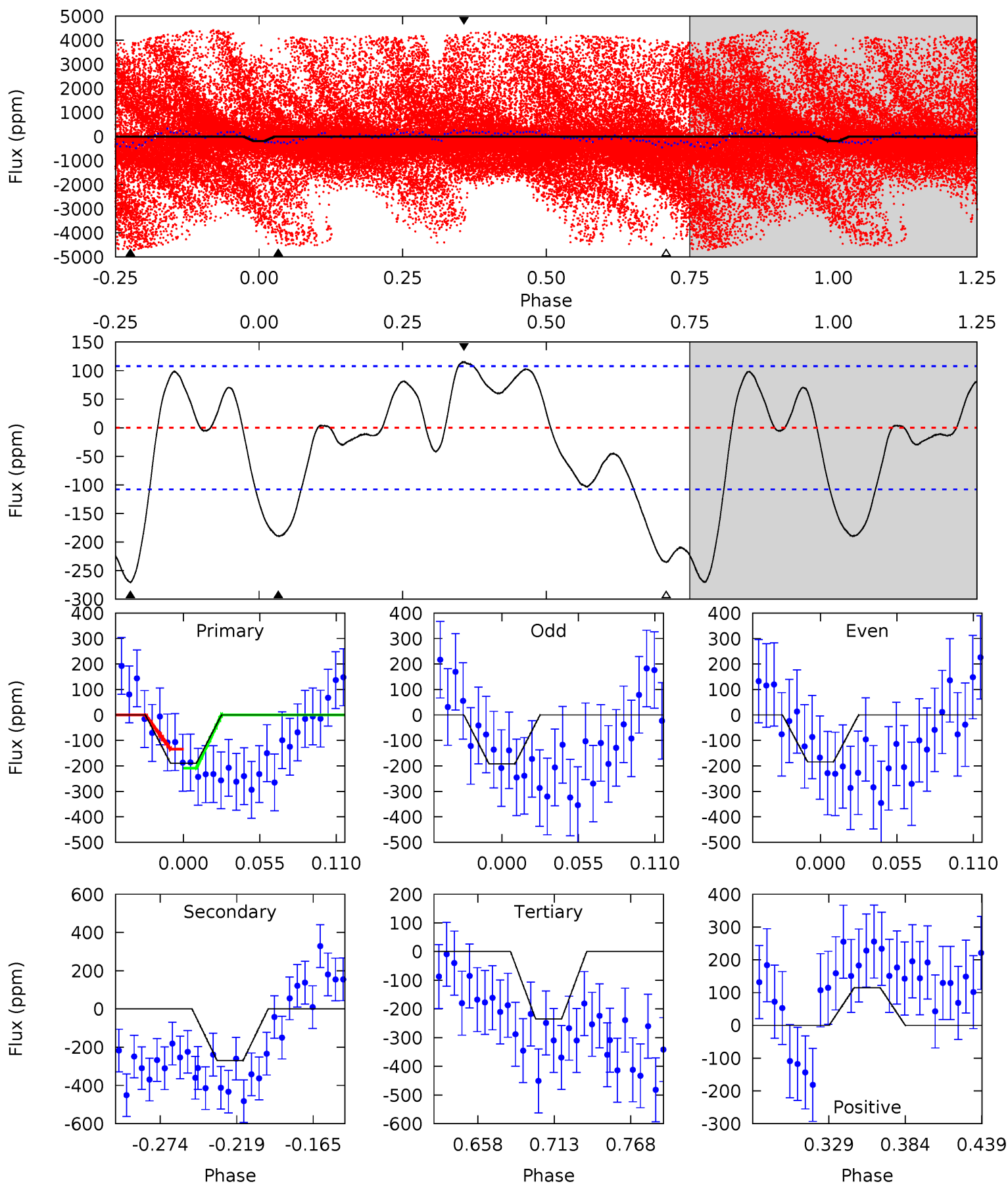
Pri	Sec	Ter	Pos	FA ₁	FA ₂	F _{Red}	Pri-Ter	Pri-Pos	Sec-Ter	Sec-Pos	Odd-Evn	DMM	Shape	TAT
9.12	5.78	0	0	4.21	0.66	0.91	9.12	9.12	5.78	5.78	0.59	2.33	0.15	0



Alt Model-Shift Uniqueness Test

007199036-01, P = 1.134400 Days, E = 130.694308 Days

Pri	Sec	Ter	Pos	FA ₁	FA ₂	F _{Red}	Pri-Ter	Pri-Pos	Sec-Ter	Sec-Pos	Odd-Evn	DMM	Shape	TAT
8.25	11.8	10.2	5.00	4.69	1.92	3.93	-1.98	3.25	1.53	6.76	0.17	1.09	0.30	1.64



Stellar Parameters For KIC 007199036

	$T_{\text{eff}}(K)$	$\log(g)$	[Fe/H]	$R (R_{\odot})$	$M(M_{\odot})$	$p_{\star} (\text{g}\cdot\text{cm}^{-3})$
	6055^{+162}_{-217}	$4.467^{+0.054}_{-0.216}$	$-0.060^{+0.250}_{-0.350}$	$0.996^{+0.330}_{-0.110}$	$1.059^{+0.139}_{-0.139}$	$1.510^{+0.438}_{-0.810}$
	+3%/-4%	+1%/-5%	+417%/-583%	+33%/-11%	+13%/-13%	+29%/-54%
Source	PHO1	KIC0	KIC0	DSEP		

KIC = Kepler Input Catalog; PHO = Photometry; SPE = Spectroscopy; AST = Asteroseismology
 TRA = Transits; DESP = Dartmouth Models; MULT = Multiple Models

Secondary Eclipse Parameters for KIC 007199036-01 / KOI

Detrend	Depth (ppm)	$R_p (R_{\oplus})$	$T_{\text{max}} (K)$	$T_{\text{obs}} (K)$	A_{obs}
DV	-30 ± 5	$2.24^{+0.39}_{-0.17}$	2575^{+192}_{-132}	3450^{+152}_{-164}	$1.436^{+0.431}_{-0.385}$
Alt.	-270 ± 23	$1.43^{+0.25}_{-0.14}$	2588^{+204}_{-139}	6891^{+297}_{-311}	33^{+8}_{-9}

T_{max} = Theoretical Maximum Planetary Temperature

T_{obs} = Observed Planetary Temperature (Assuming A=0.3)

A_{obs} = Observed Albedo (Assuming T=0)

If a secondary eclipse is present, the system is likely an EB if $T_{\text{obs}} \gg T_{\text{max}}$ AND $A_{\text{obs}} \gg 1.0$

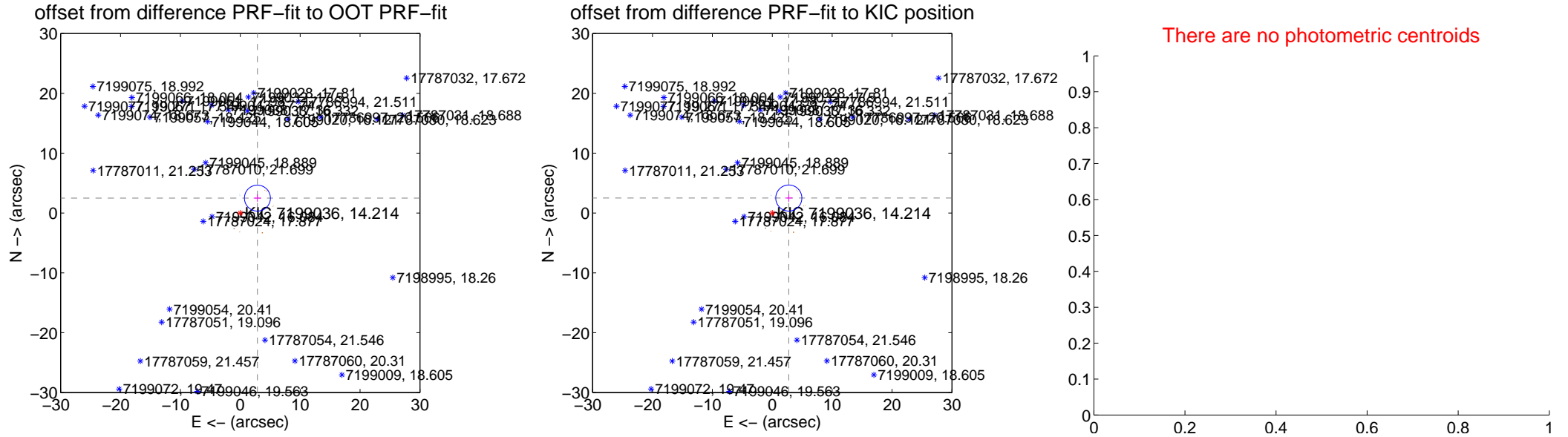
DV Centroid Data

Supplemental centroid analysis for 007199036-01. Kepler magnitude: 14.21. Transit SNR 45.36

There are 5 quarters with good PRF difference image offsets

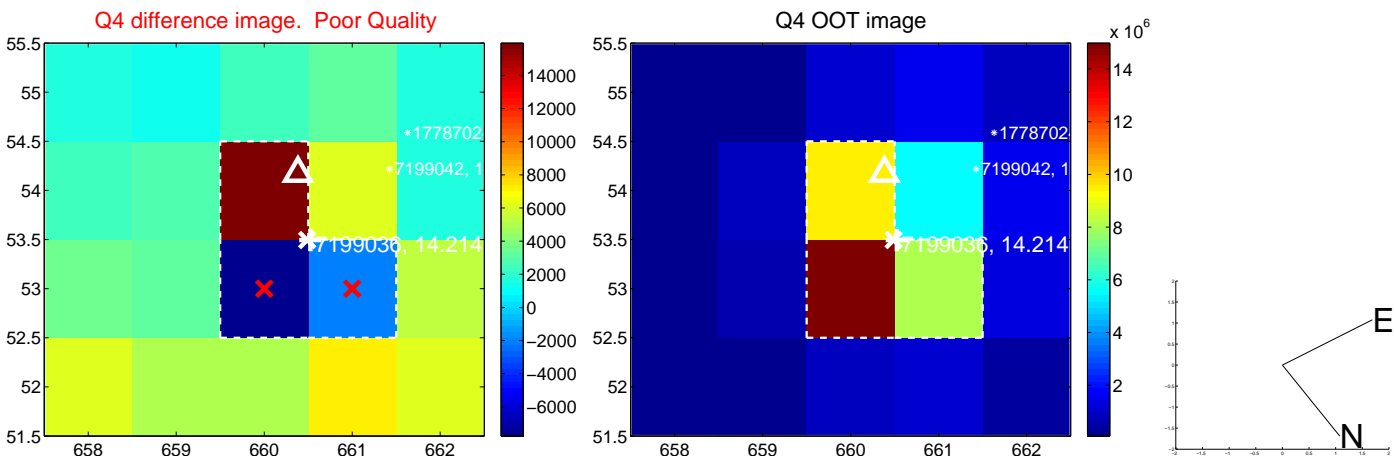
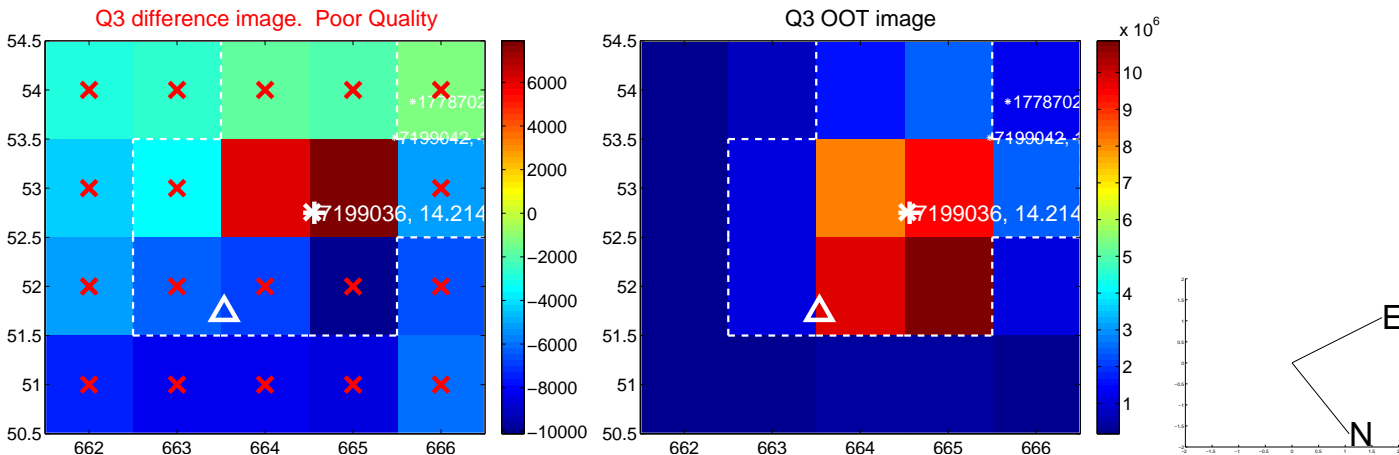
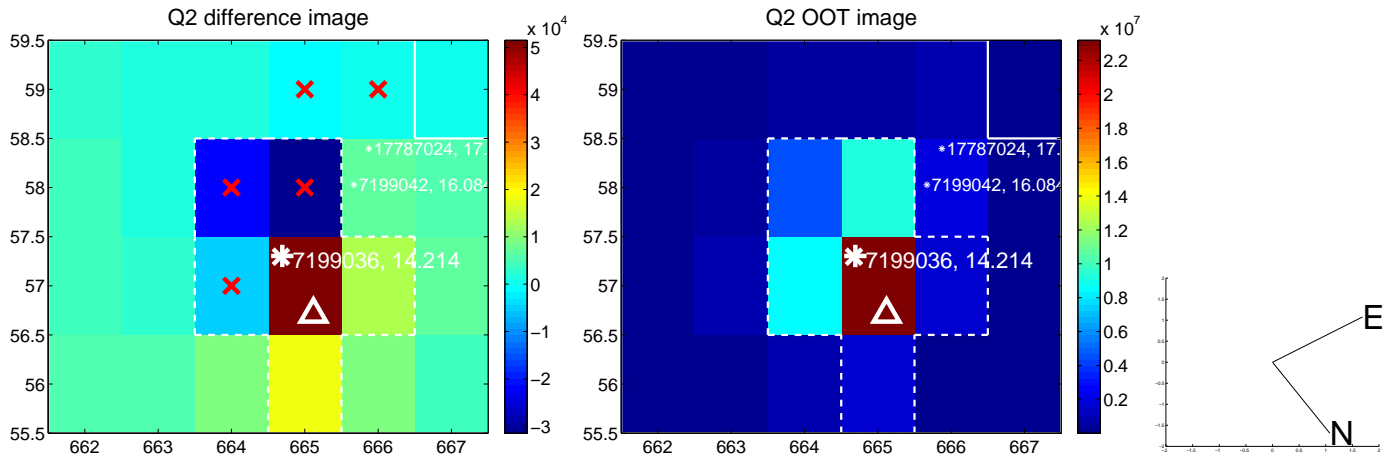
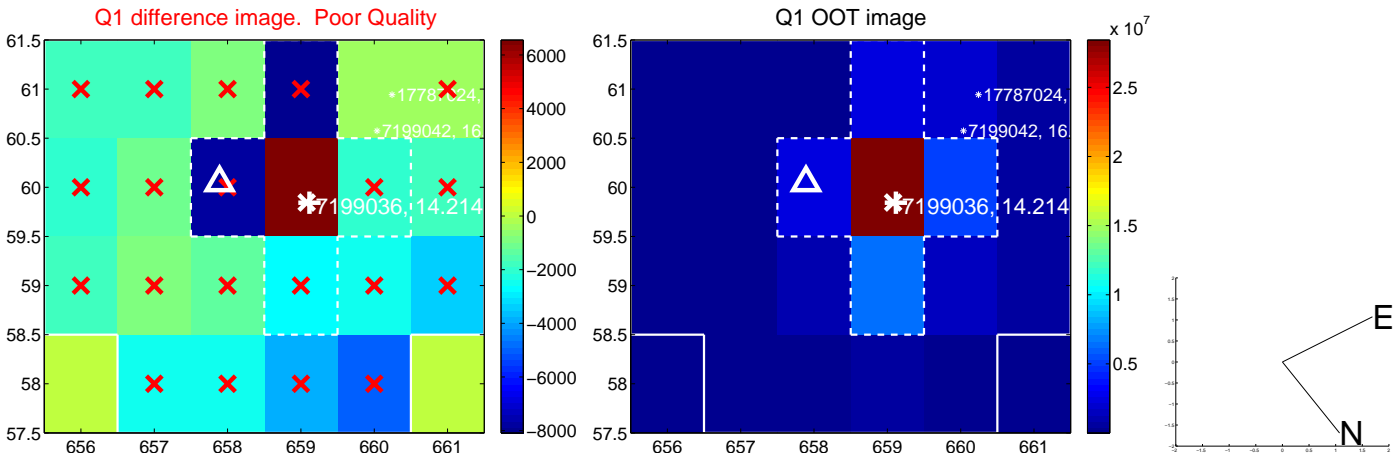
The direct PRF centroid is offset from the target star catalog position by about 0.13 arcsec

	Distance in arcsec	Distance / σ	Δ RA	Δ Dec
PRF-fit source offset from OOT	3.791 \pm 0.723	5.25	-2.861 \pm 0.625	2.488 \pm 0.612
PRF-fit source offset from KIC position	3.728 \pm 0.727	5.13	-2.763 \pm 0.604	2.503 \pm 0.620
photometric centroid source offset	—	—	—	—

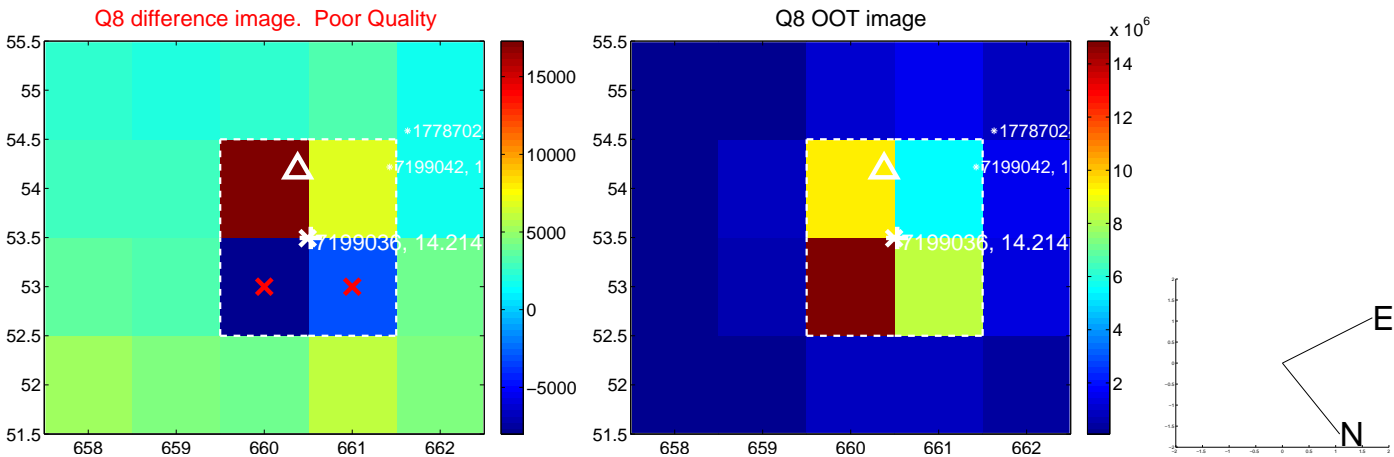
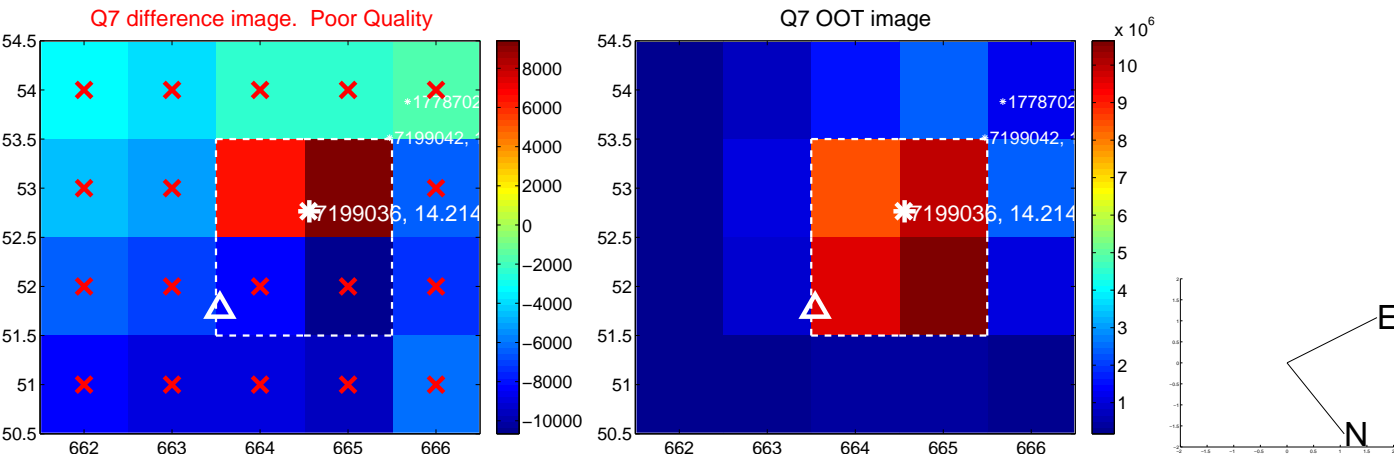
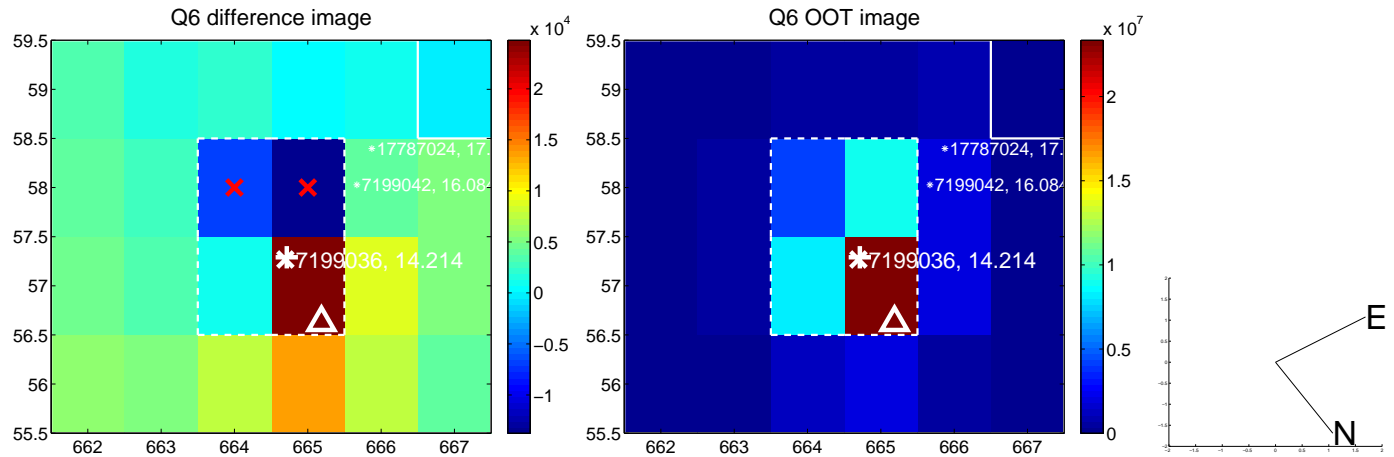
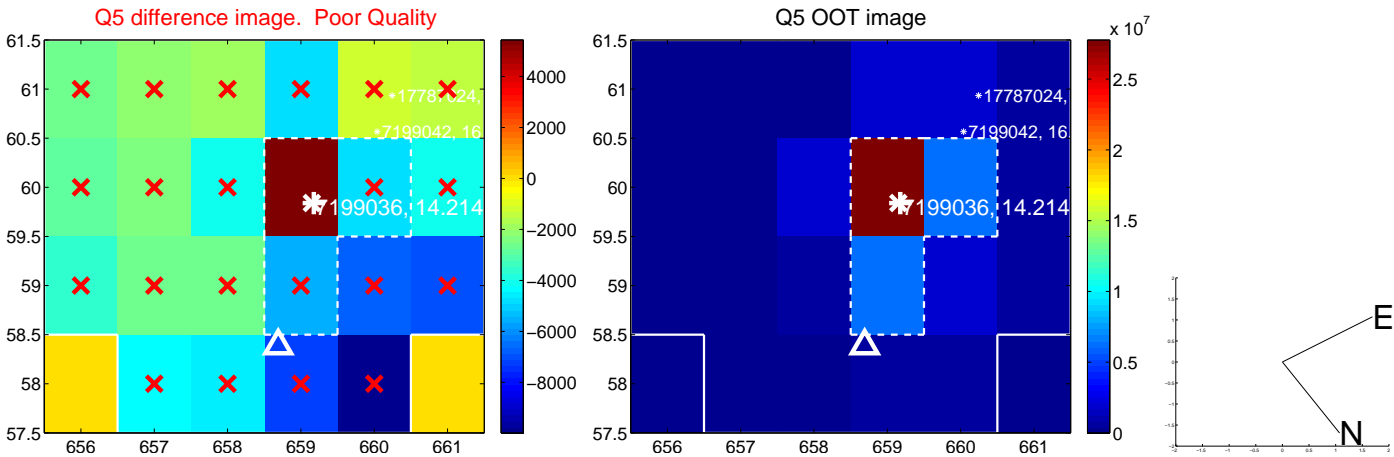


Centroid source offsets from the target star reconstructed from PRF and photometric centroids. **Sky blue crosses: good quarterly centroid offsets**; **Vermillion crosses: bad quarterly centroid offsets**; magenta cross: average over quarters. Length of the crosses: one- σ uncertainty. Blue circle: three- σ . Red *: target star. Blue *: Other stars. Text next to a star gives its KIC ID and kepmag. KIC IDs > 15,000,000 are from the UKIRT catalog.

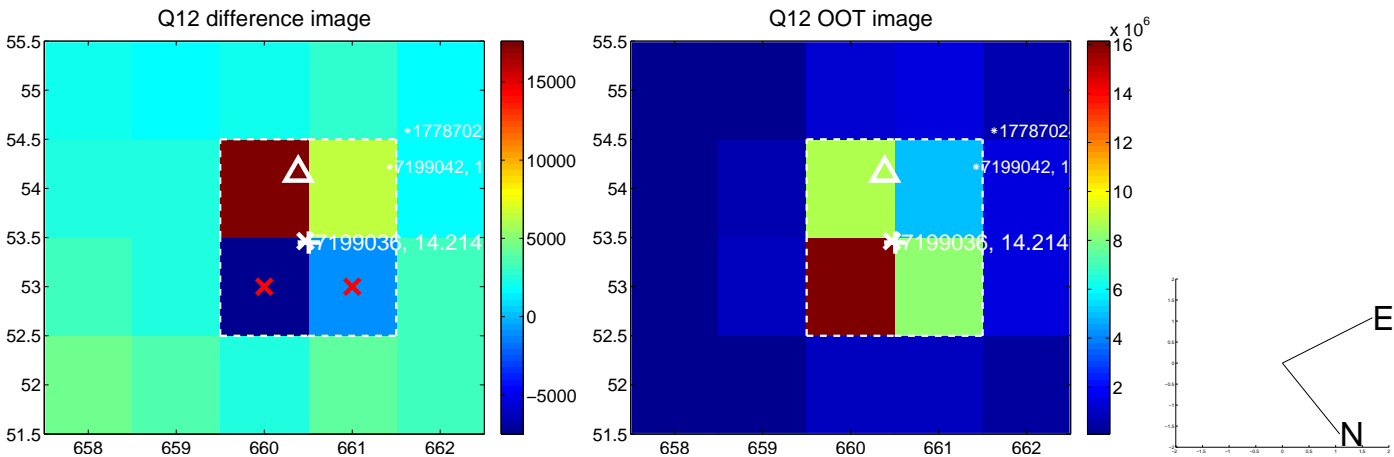
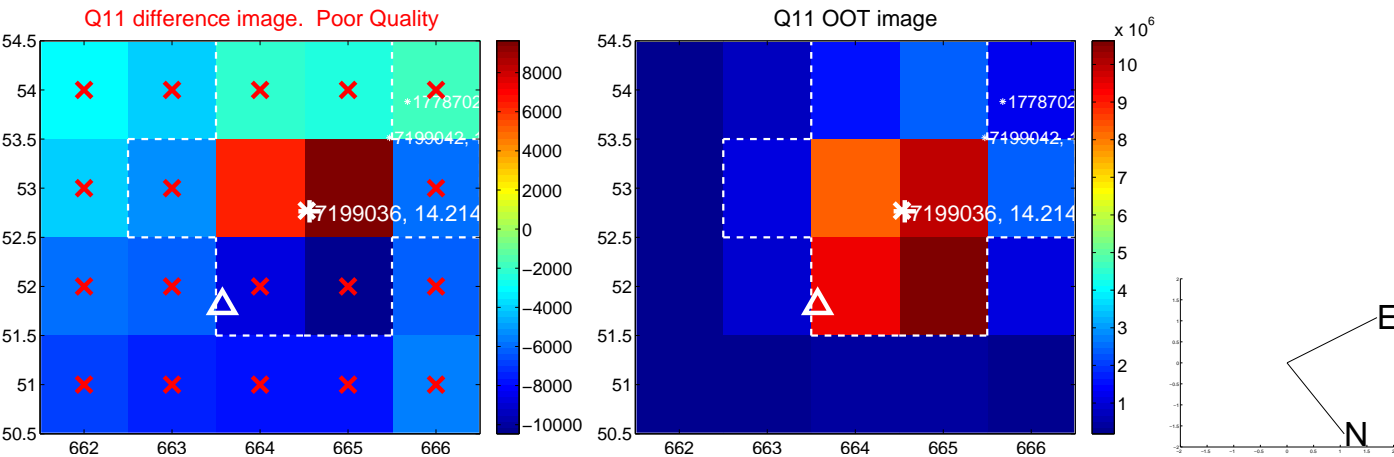
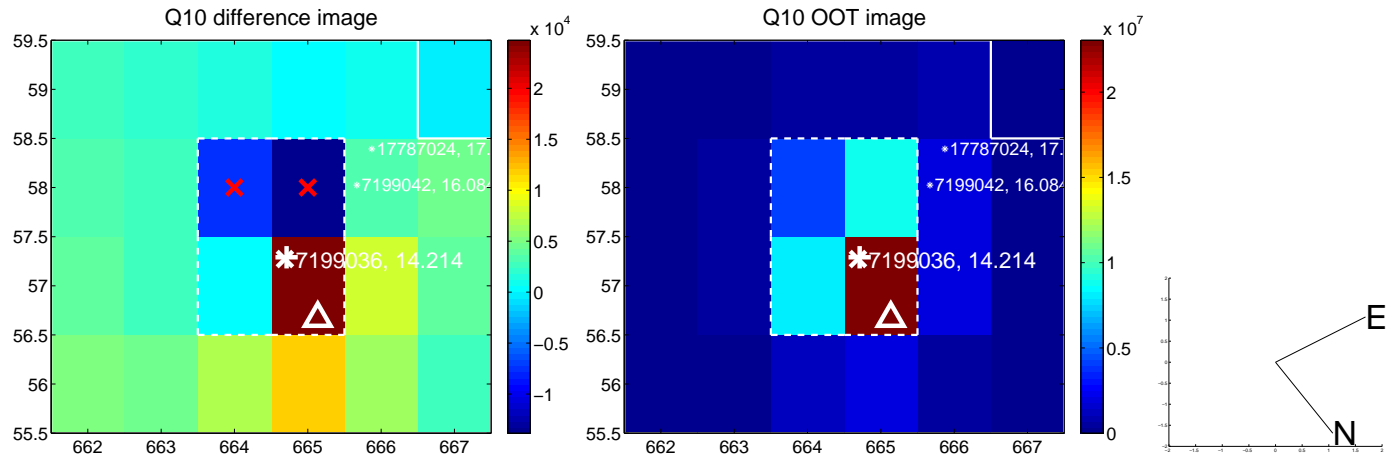
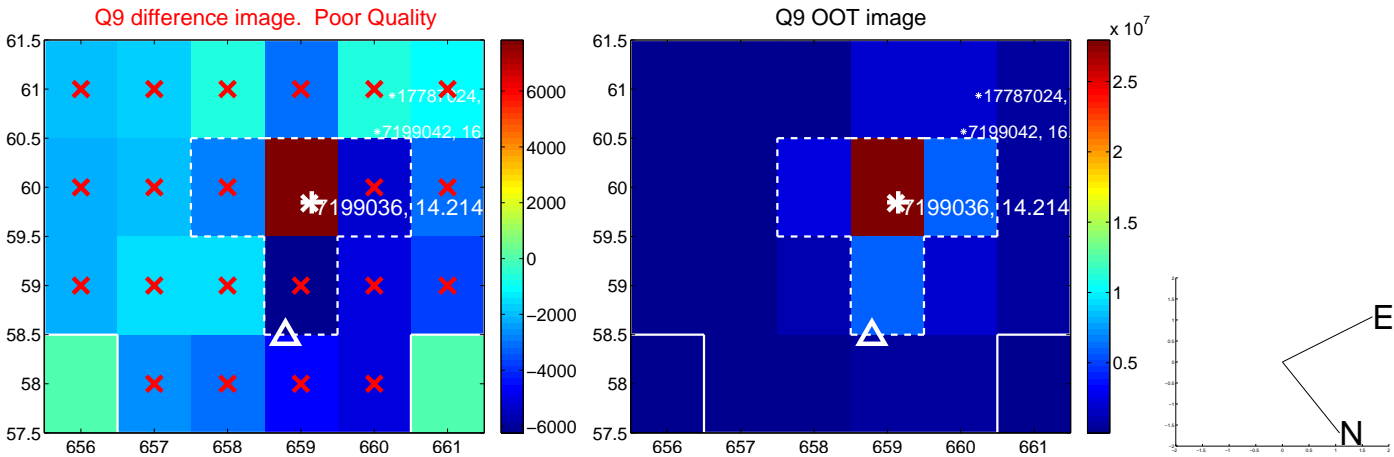
white \times : KIC target position; +: OOT centroid; \triangle : difference centroid. red \times : large negative pixel value.



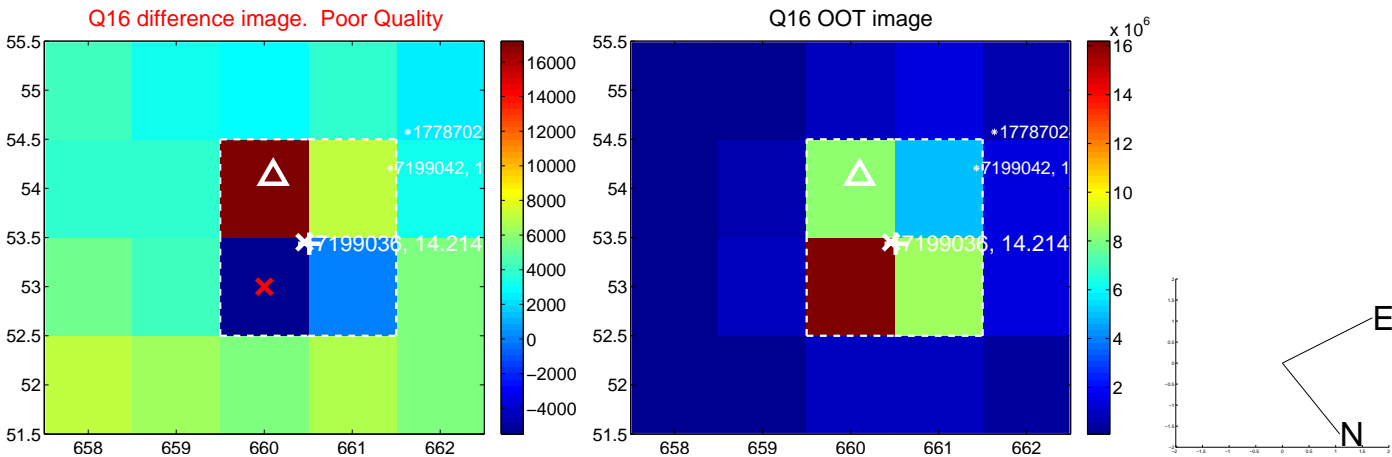
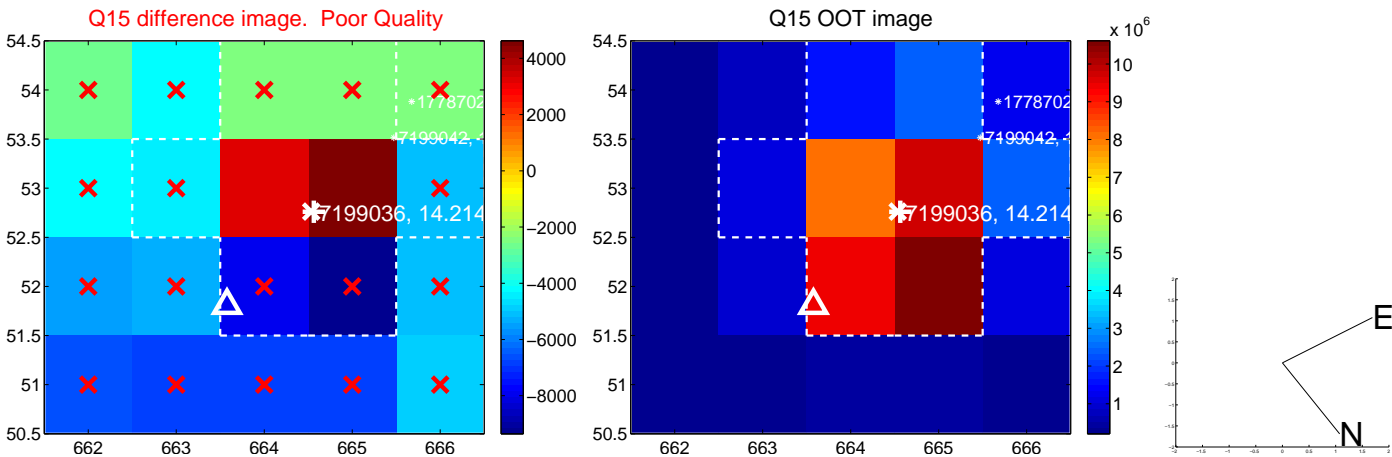
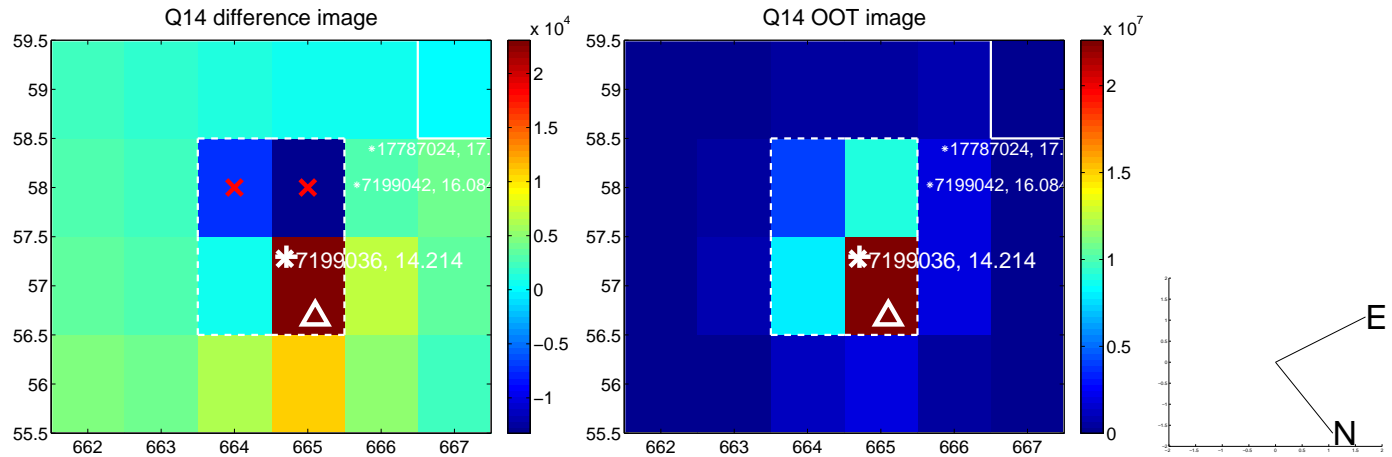
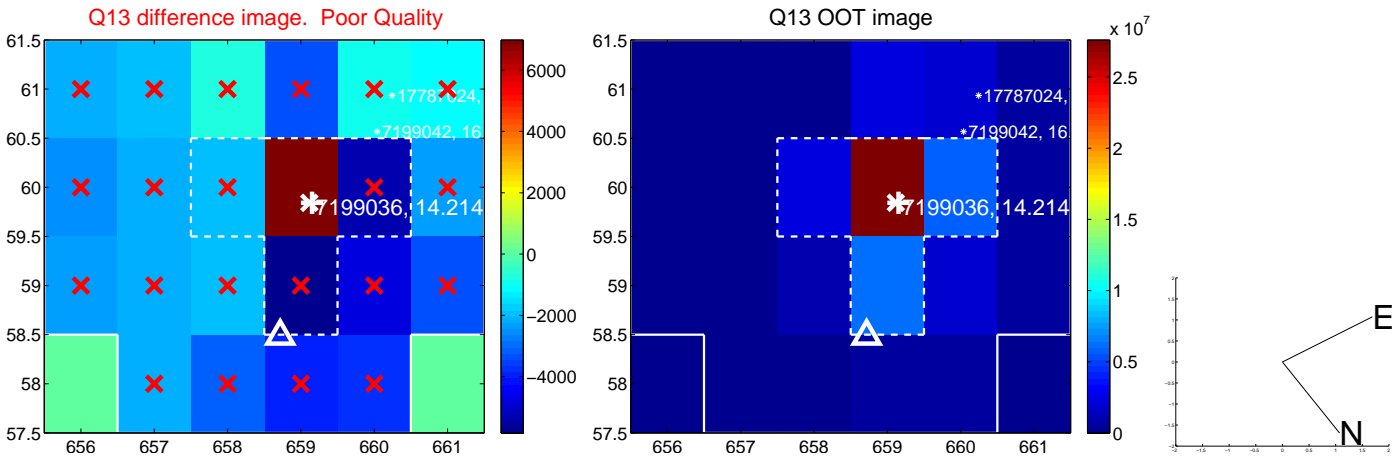
white \times : KIC target position; +: OOT centroid; \triangle : difference centroid. red \times : large negative pixel value.



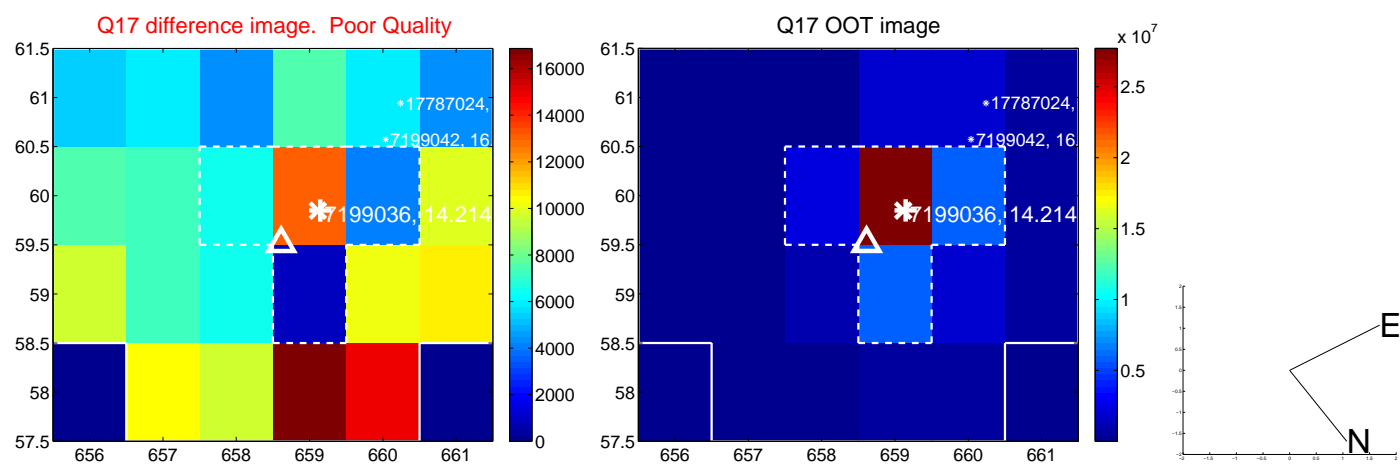
white \times : KIC target position; +: OOT centroid; \triangle : difference centroid. red \times : large negative pixel value.



white \times : KIC target position; +: OOT centroid; \triangle : difference centroid. red \times : large negative pixel value.



white \times : KIC target position; $+$: OOT centroid; \triangle : difference centroid. red \times : large negative pixel value.



folded centroid time series figure for this object.

UKIRT Image

Declination

