

KIC 006962668

Q1-17 DR25 TCE Parameters

TCE	Run Type	KOI?	Period (Days)	Epoch (BKJD)	Depth (ppm)	Duration (Hours)	MES	SNR	R_{\star} (R_{\odot})	T_{\star} (K)	R_p (R_{\oplus})	S_p (S_{\oplus})
006962668-01	OBS	No	1.155899	132.329961	2.4	11.180	12.5	1.6	1.25	6778	0.20	5461.95

Robovetter Results

TCE	Run Type	Disp	Score	N	S	C	E	Comments
006962668-01	OBS	FP	0.00	1	0	0	0	SWEET_NTL—LPP_DV—LPP_ALT—CENT_FEW_DIFFS

Notes: OBS = Observed. INJ = Injected. INV = Inverted. SCR = Scrambled.

N = Not Transit-Like. S = Stellar Eclipse. C = Centroid Offset. E = Ephemeris Match.

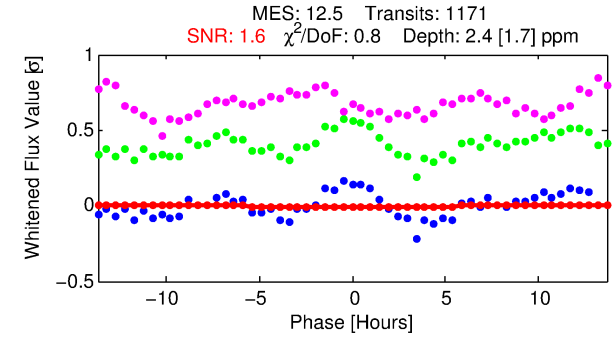
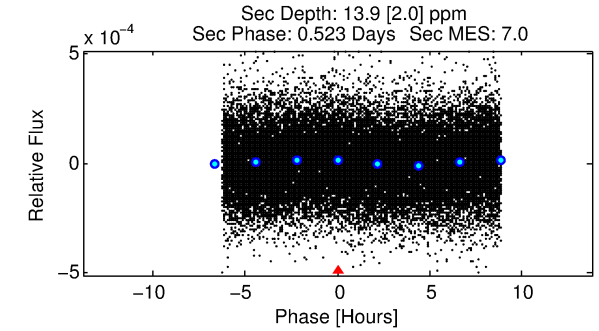
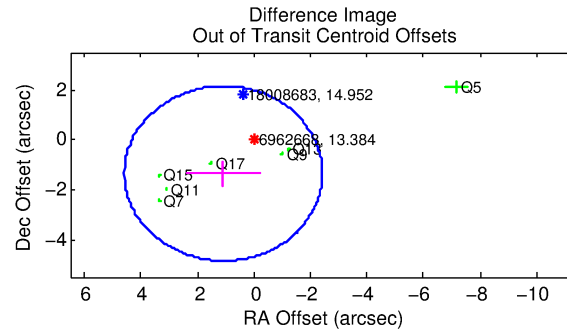
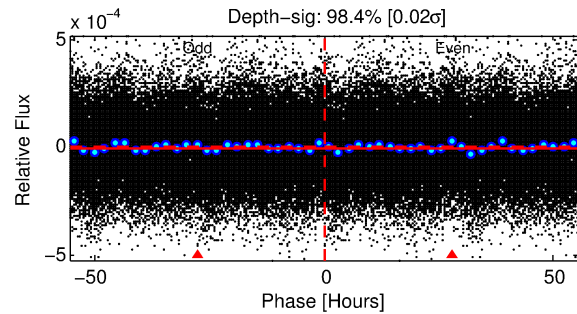
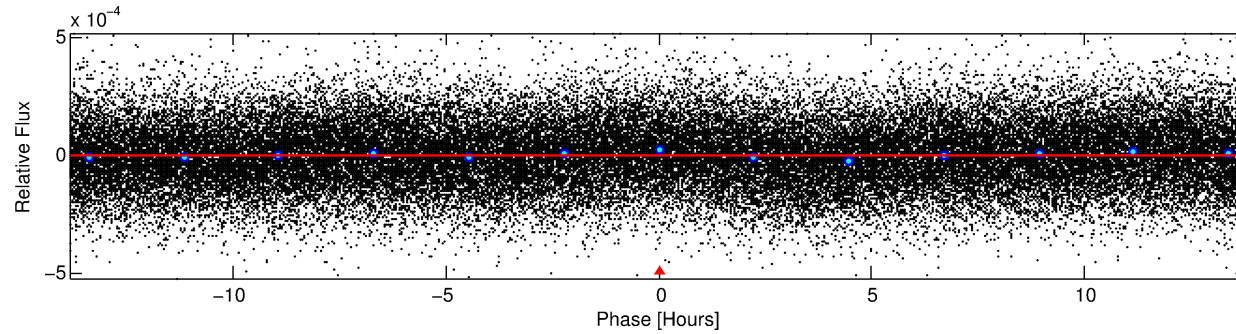
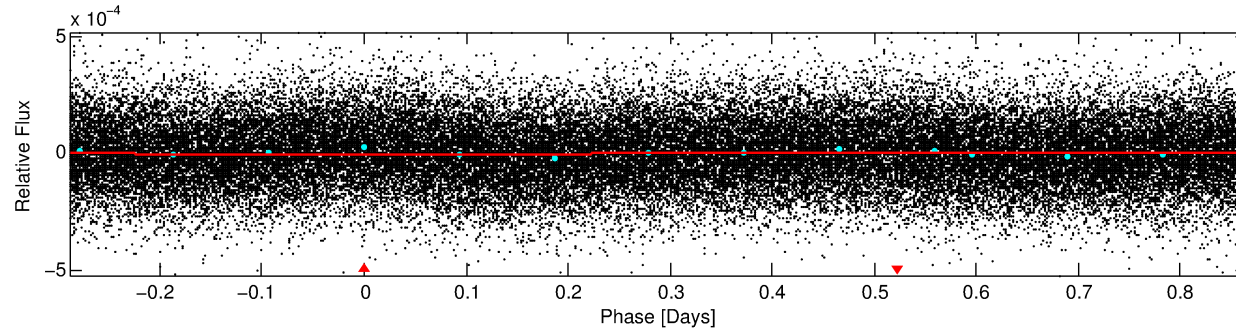
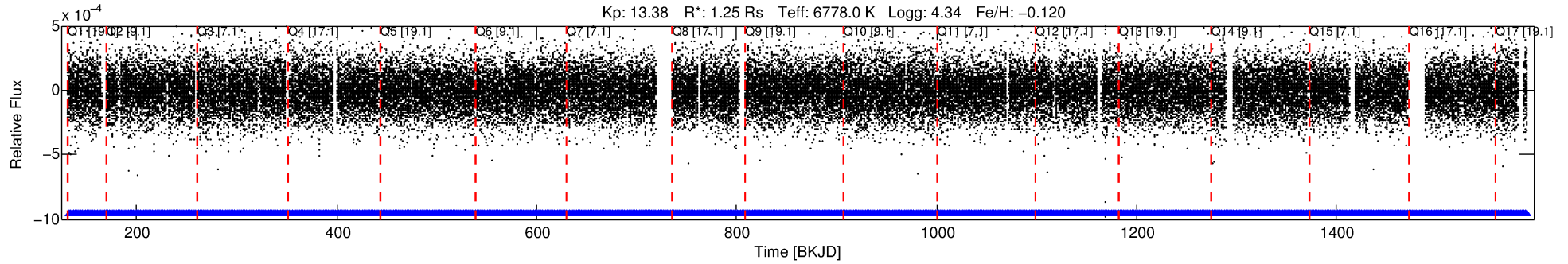
See http://exoplanetarchive.ipac.caltech.edu/docs/API_kepcandidate_columns.html#proj_disp_col for comment definitions.

Ephemeris Match Information For 006962668-01

No Significant Match Found

DV One-Page Summary

KIC: 6962668 Candidate: 1 of 1 Period: 1.156 d



DV Fit Results:

Period = 1.15590 [0.00014] d
Epoch = 132.3300 [0.0413] BKJD
Rp/R* = 0.0015 [0.0067]
a/R* = 1.03 [1.75]
b = 0.57 [31.26]
Seff = 5461.95 [2005.50]
Teq = 2192 [201] K
Rp = 0.20 [0.92] Re
a = 0.0233 [0.0046] AU
Ag = 102.56 [932.47] [0.11 σ]
Teffp = 10786 [24513] K [0.35 σ]

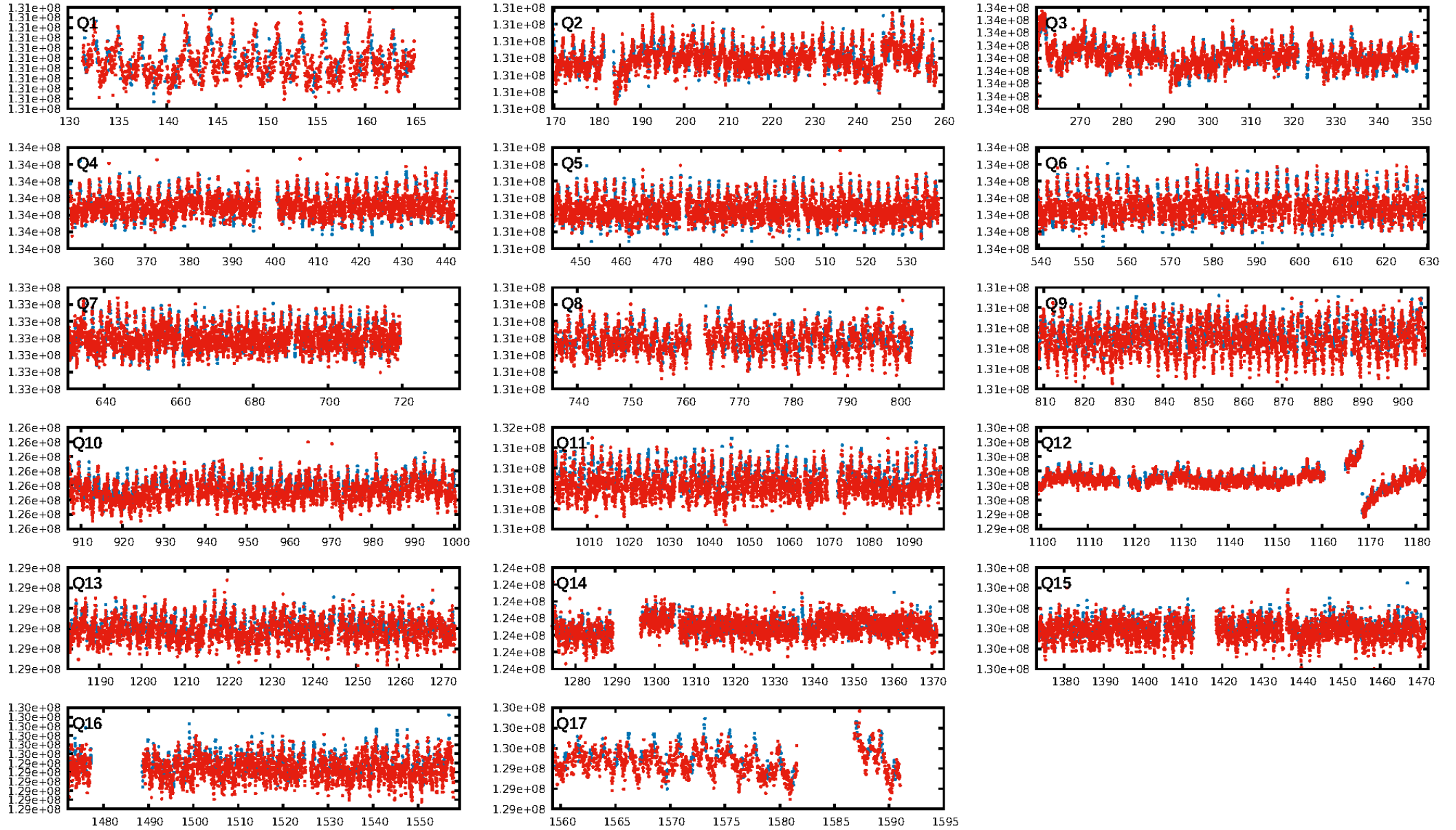
DV Diagnostic Results:

ShortPeriod-sig: N/A
LongPeriod-sig: N/A
ModelChiSquare2-sig: N/A
ModelChiSquareGof-sig: N/A
Bootstrap-pfa: N/A
RollingBand-fgt: 1.00 [1119/1119]
GhostDiagnostic-chr: N/A
Centroid-sig: N/A
Centroid-so: N/A
OotOffset-rm: 1.734 arcsec [1.49 σ]
KicOffset-rm: 1.854 arcsec [1.77 σ]
OotOffset-st: 0/3/0/4 [7]
KicOffset-st: 0/3/0/4 [7]
DiffImageQuality-fgm: 0.43 [3/7]
DiffImageOverlap-fno: 1.00 [17/17]

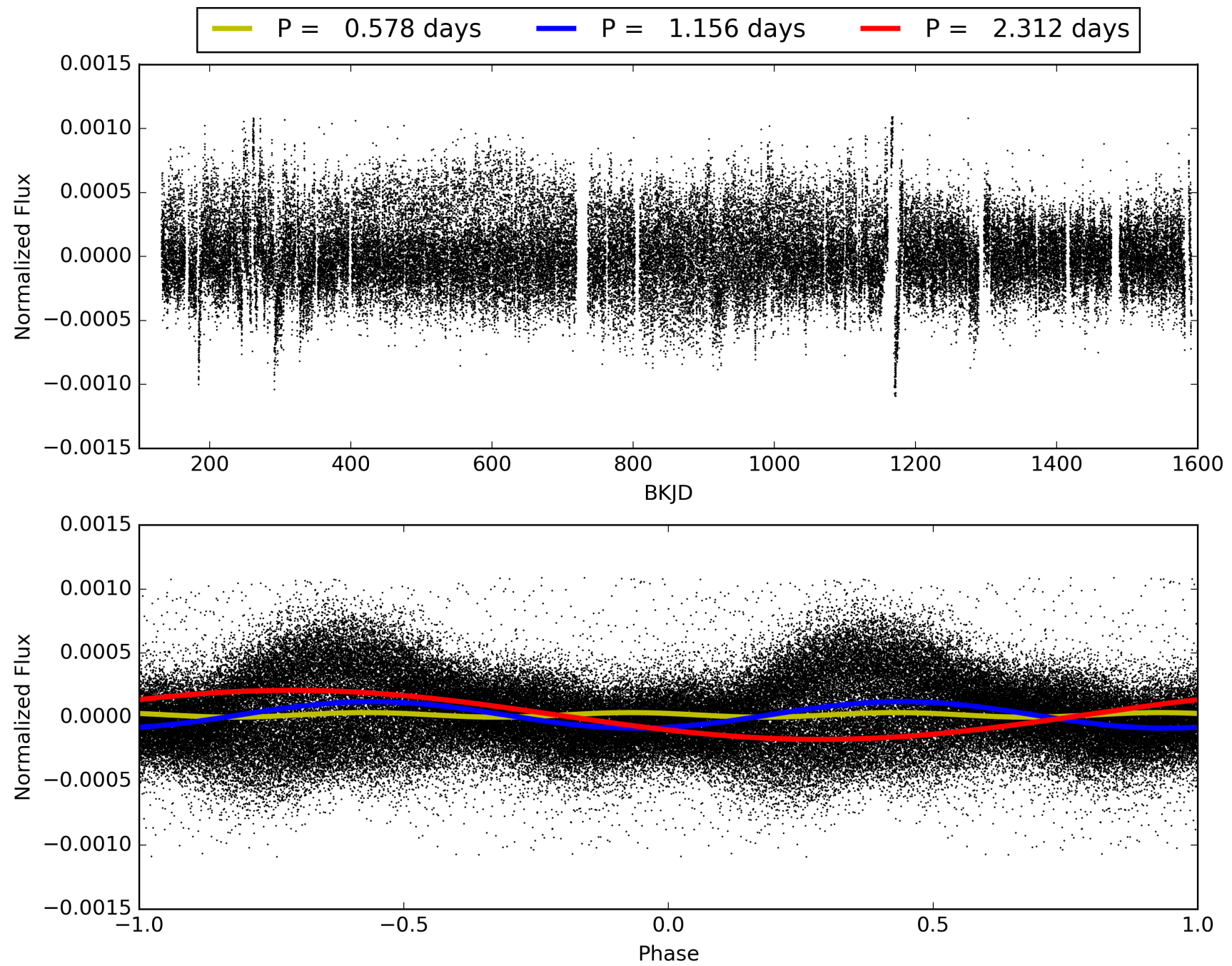
Software Revision: svn+ssh://murzim/repo/soc/tags/release/9.3.42@60958 -- Date Generated: 30-Jan-2016 14:32:41 Z

This Data Validation Report Summary was produced in the Kepler Science Operations Center Pipeline at NASA Ames Research Center

TCE 006962668-01, PDC Light Curves

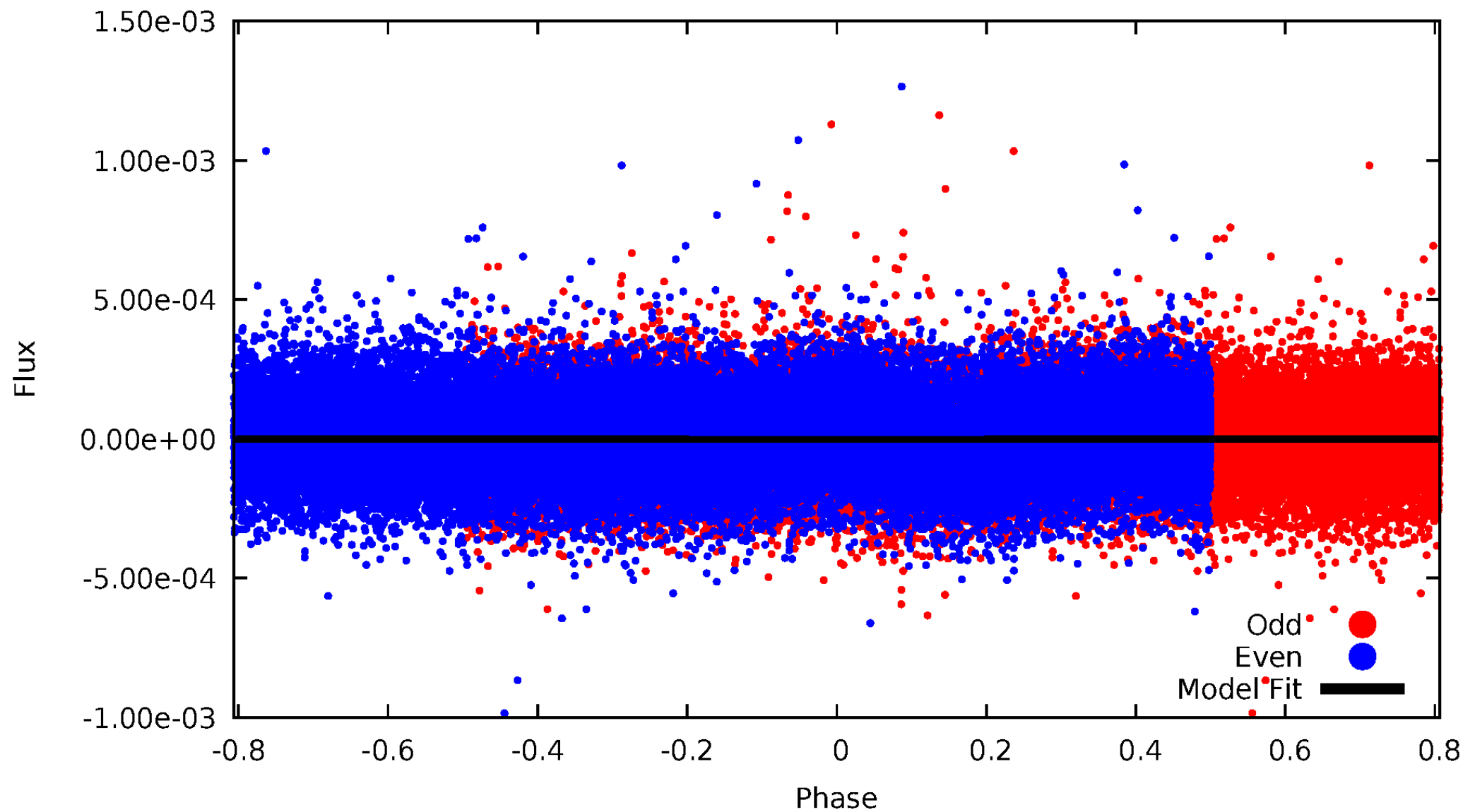


TCE 006962668-01



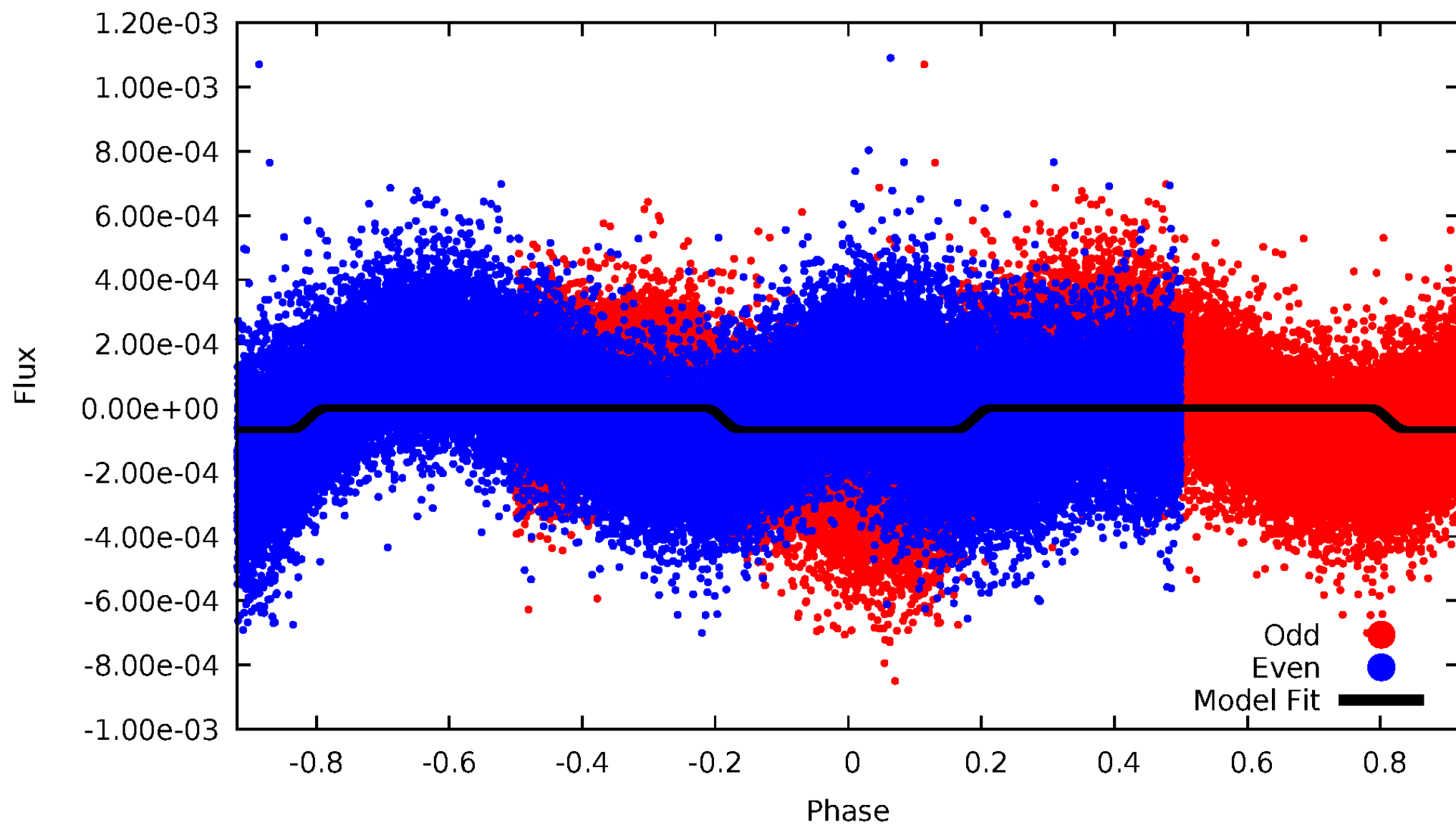
DV Odd/Even

TCE 006962668-01

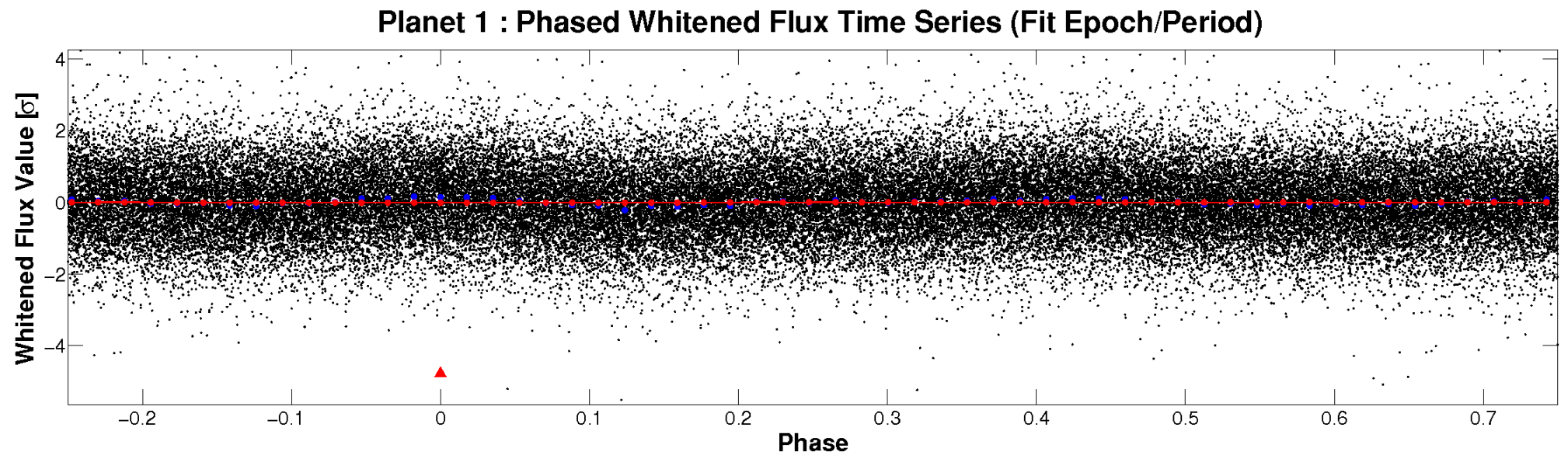
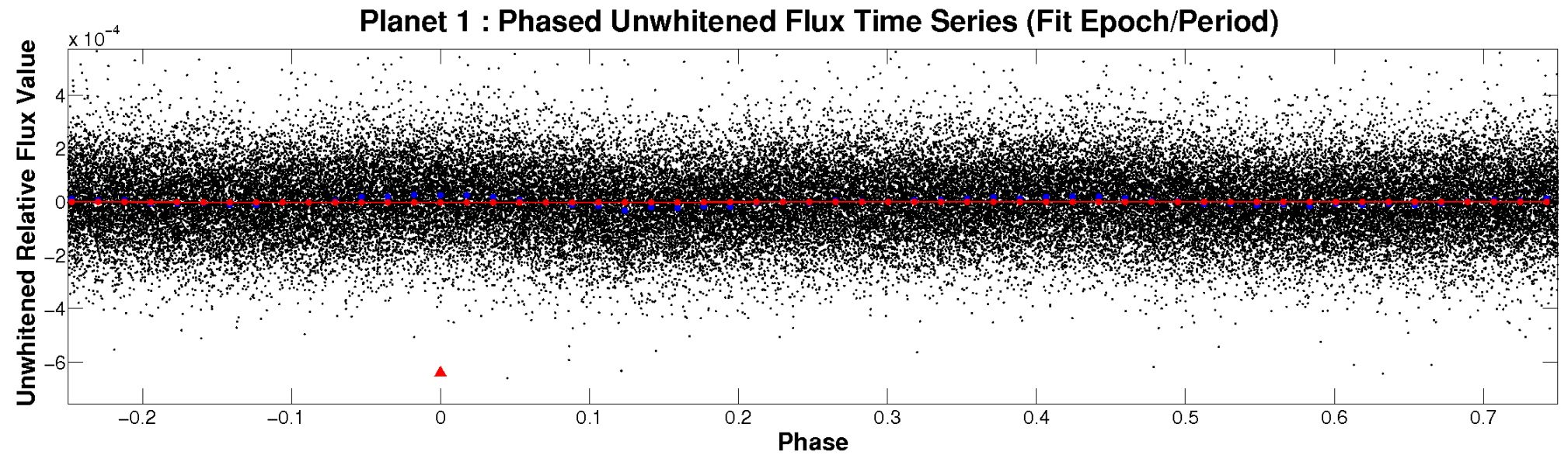


ALT Odd/Even

TCE 006962668-01

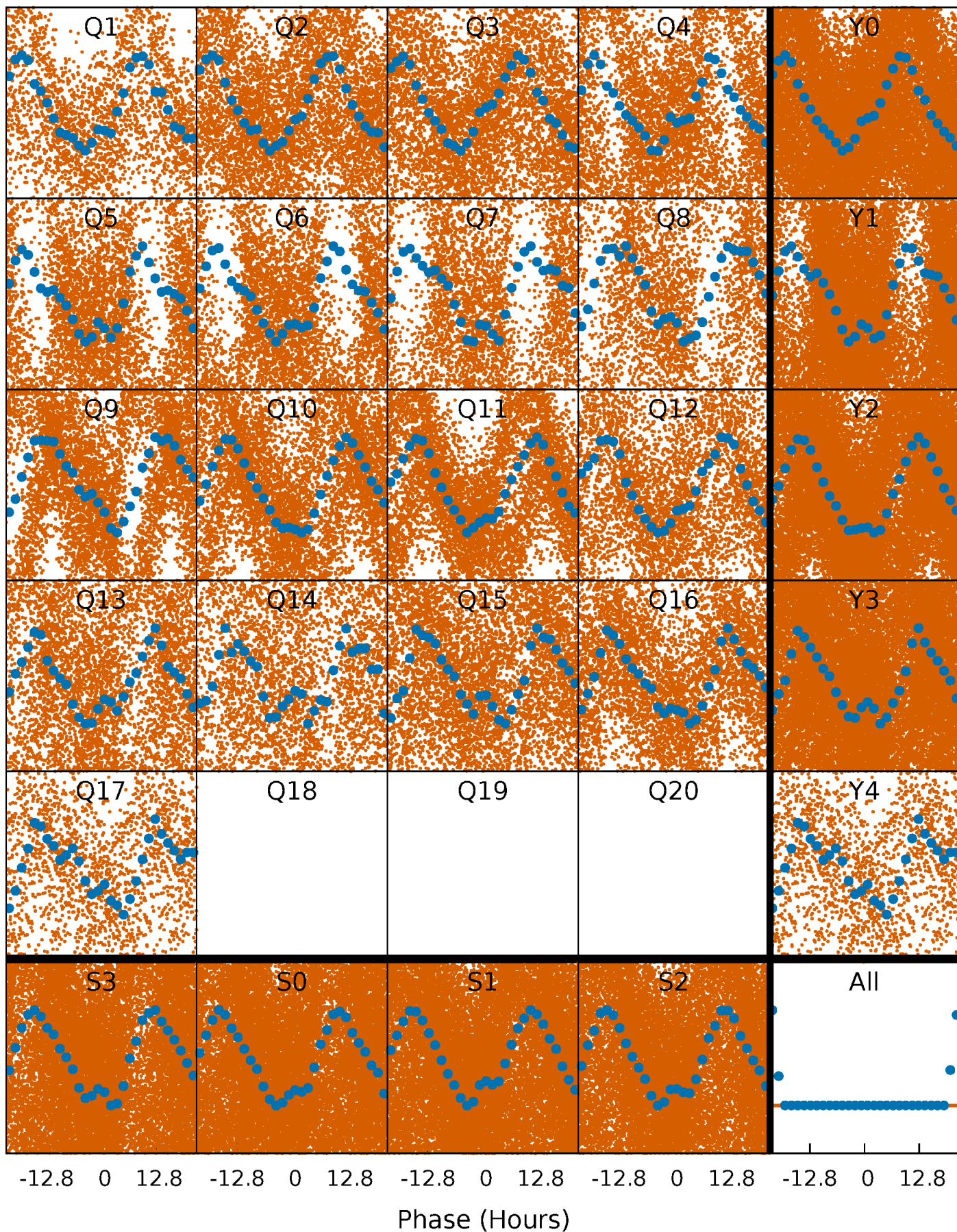


Non-Whitened Vs. Whitened Light Curve



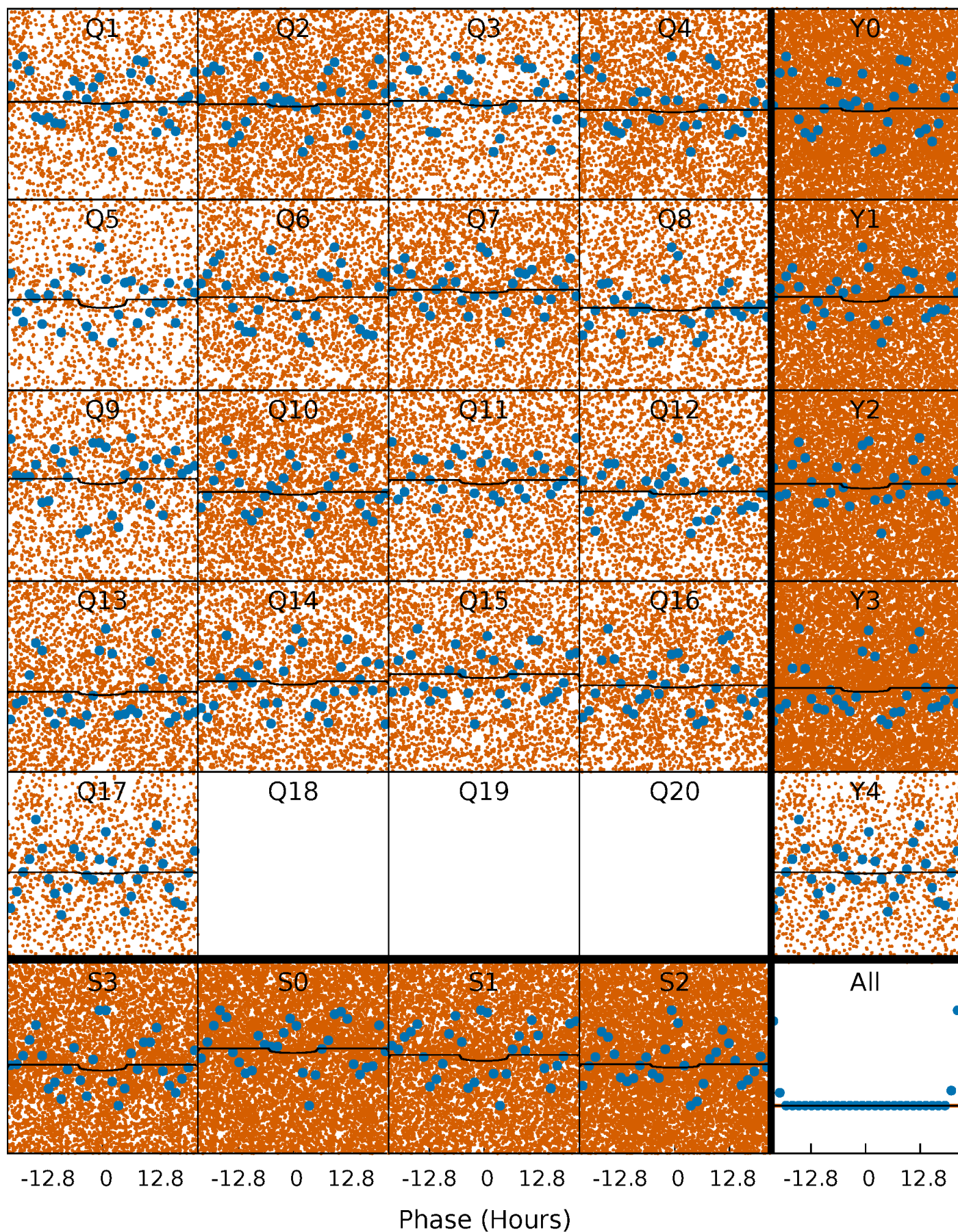
PDC Quarter-Phased Transit Curves

TCE 006962668-01 P= 1.155899 Days $T_0=132.329961$ (BKJD)



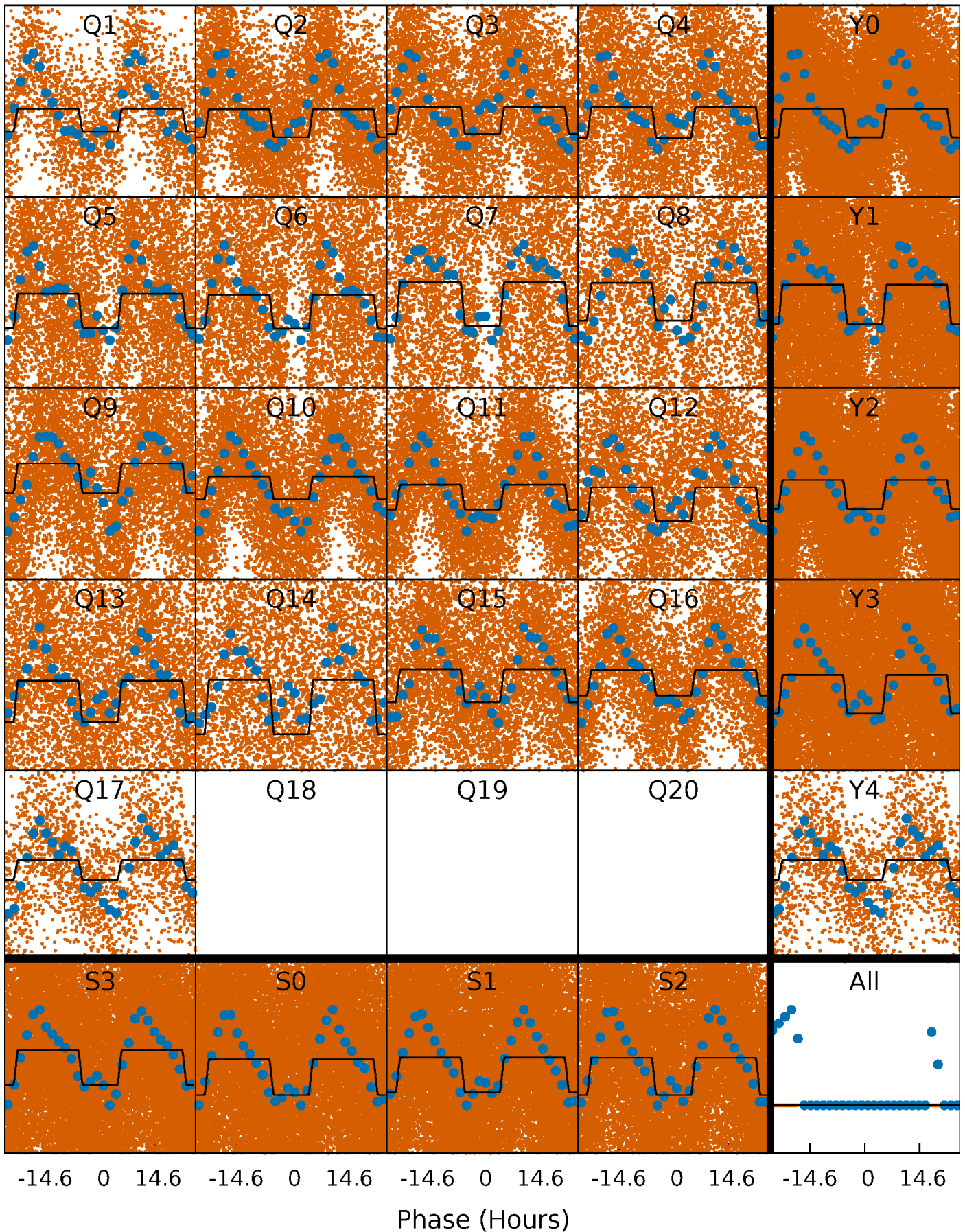
DV Quarter-Phased Transit Curves

TCE 006962668-01 P= 1.155899 Days $T_0=132.329961$ (BKJD)



Alt. Detrend Quarter-Phased Transit Curves

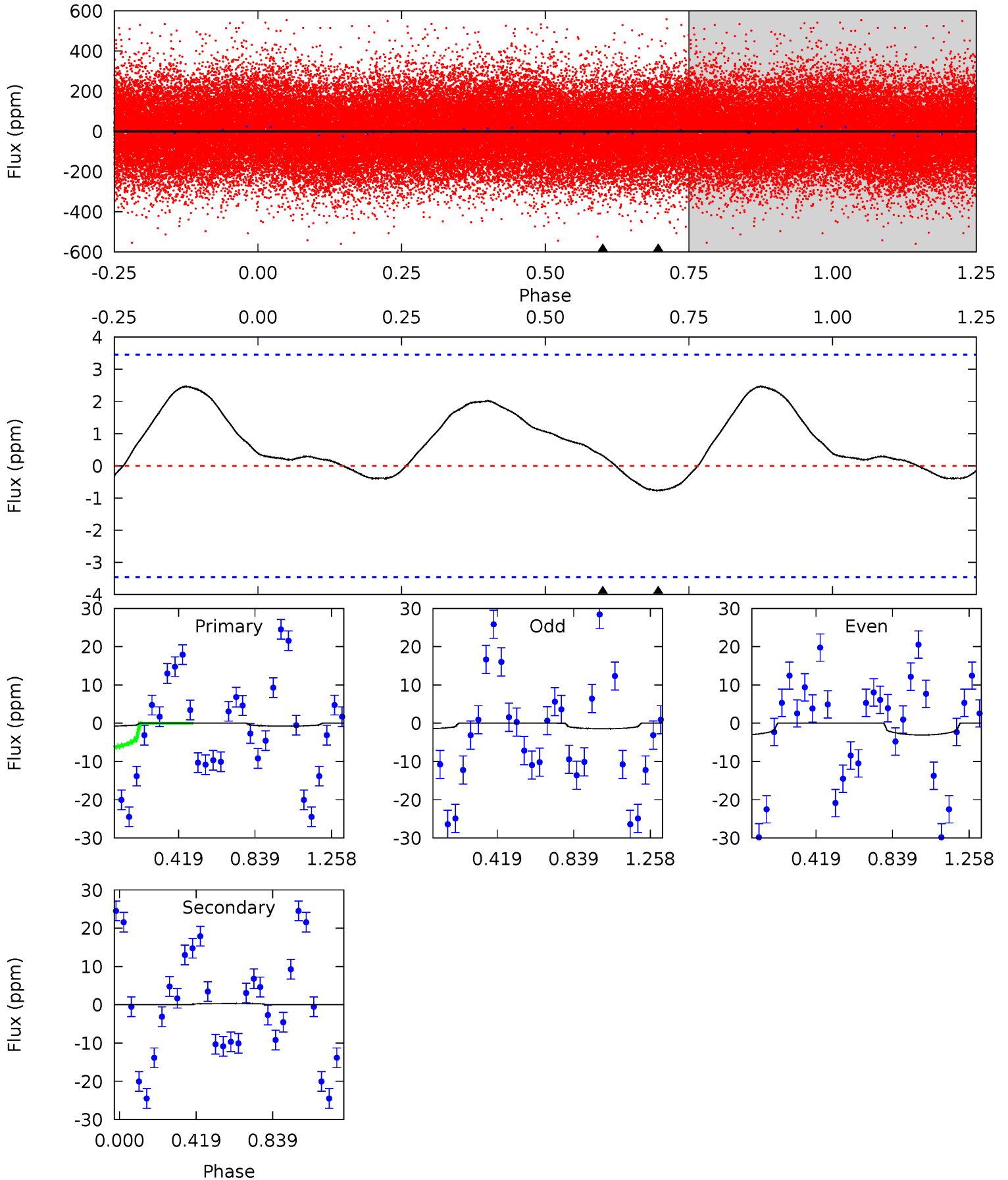
TCE 006962668-01 P= 1.155962 Days $T_0=132.310817$ (BKJD)



DV Model-Shift Uniqueness Test

006962668-01, P = 1.155899 Days, E = 131.174062 Days

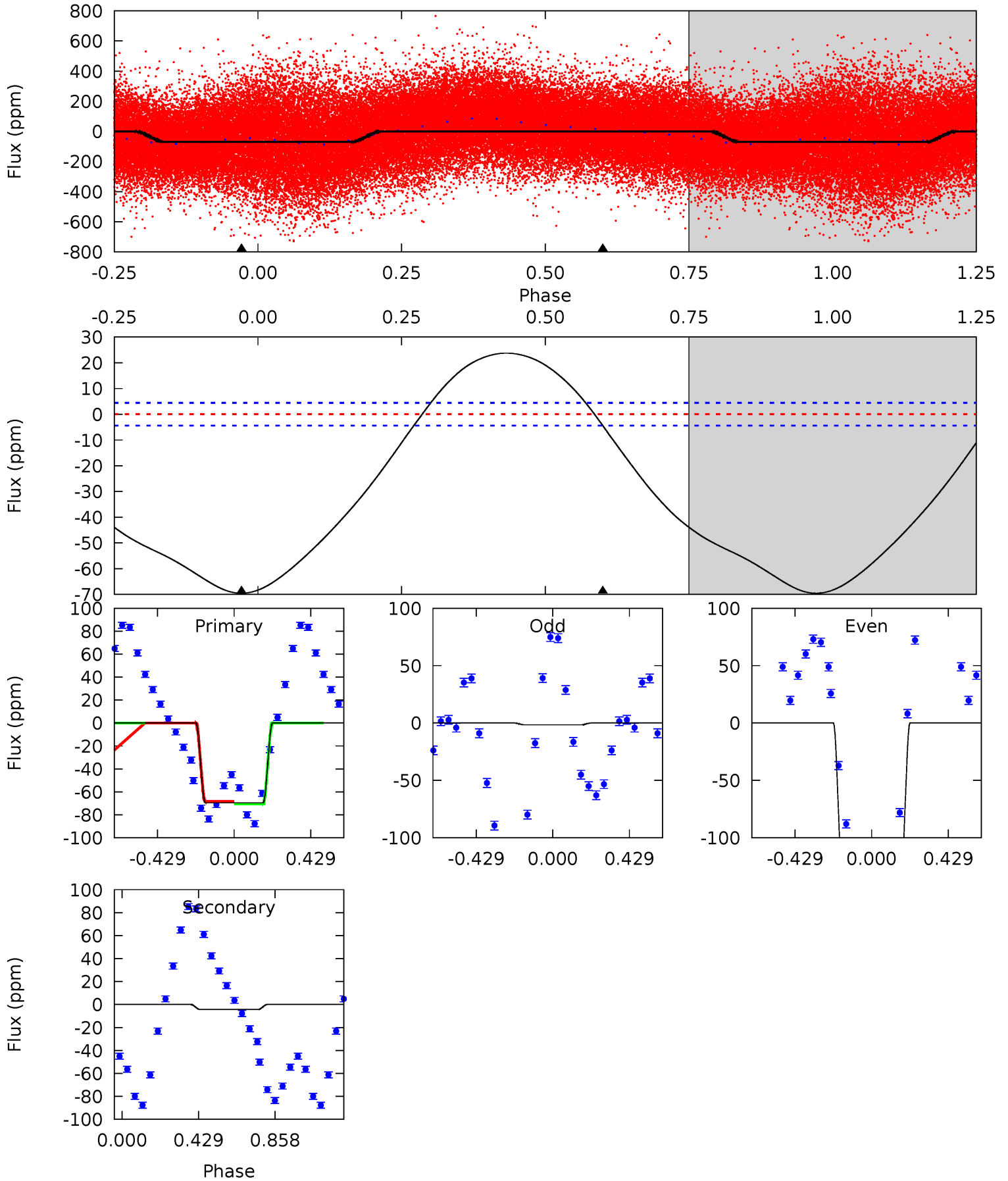
Pri	Sec	Ter	Pos	FA ₁	FA ₂	F _{Red}	Pri-Ter	Pri-Pos	Sec-Ter	Sec-Pos	Odd-Evn	DMM	Shape	TAT
0.94	-0.39	0	0	4.25	0.81	0.26	0.94	0.94	-0.39	-0.39	1.01	0.08	0.76	1.07



Alt Model-Shift Uniqueness Test

006962668-01, P = 1.155962 Days, E = 131.154855 Days

Pri	Sec	Ter	Pos	FA ₁	FA ₂	F _{Red}	Pri-Ter	Pri-Pos	Sec-Ter	Sec-Pos	Odd-Evn	DMM	Shape	TAT
66.9	4.23	0	0	4.25	0.79	8.23	66.9	66.9	4.23	4.23	60.1	1.08	0.25	1.12



Stellar Parameters For KIC 006962668

	$T_{\text{eff}}(K)$	$\log(g)$	[Fe/H]	$R (R_{\odot})$	$M(M_{\odot})$	$p_{\star} (\text{g}\cdot\text{cm}^{-3})$
	6778^{+268}_{-403}	$4.343^{+0.080}_{-0.149}$	$-0.120^{+0.250}_{-0.350}$	$1.250^{+0.302}_{-0.162}$	$1.266^{+0.142}_{-0.213}$	$0.914^{+0.331}_{-0.401}$
	+4%/-6%	+2%/-3%	+208%/-292%	+24%/-13%	+11%/-17%	+36%/-44%
Source	PHO1	FLK73	KIC0	DSEP		

KIC = Kepler Input Catalog; PHO = Photometry; SPE = Spectroscopy; AST = Asteroseismology
 TRA = Transits; DESP = Dartmouth Models; MULT = Multiple Models

Secondary Eclipse Parameters for KIC 006962668-01 / KOI

Detrend	Depth (ppm)	$R_p (R_{\oplus})$	$T_{max} (K)$	$T_{obs} (K)$	A_{obs}
DV	0 ± 1	$0.68^{+0.71}_{-0.47}$	3077^{+210}_{-187}	-3270^{+5547}_{-1089}	$-0.090^{+0.413}_{-1.635}$
Alt.	-4 ± 1	$1.27^{+0.94}_{-0.72}$	3079^{+215}_{-201}	3332^{+1508}_{-5773}	$0.758^{+3.340}_{-0.503}$

T_{max} = Theoretical Maximum Planetary Temperature
 T_{obs} = Observed Planetary Temperature (Assuming A=0.3)
 A_{obs} = Observed Albedo (Assuming T=0)

If a secondary eclipse is present, the system is likely an EB if $T_{obs} \gg T_{max}$ AND $A_{obs} \gg 1.0$

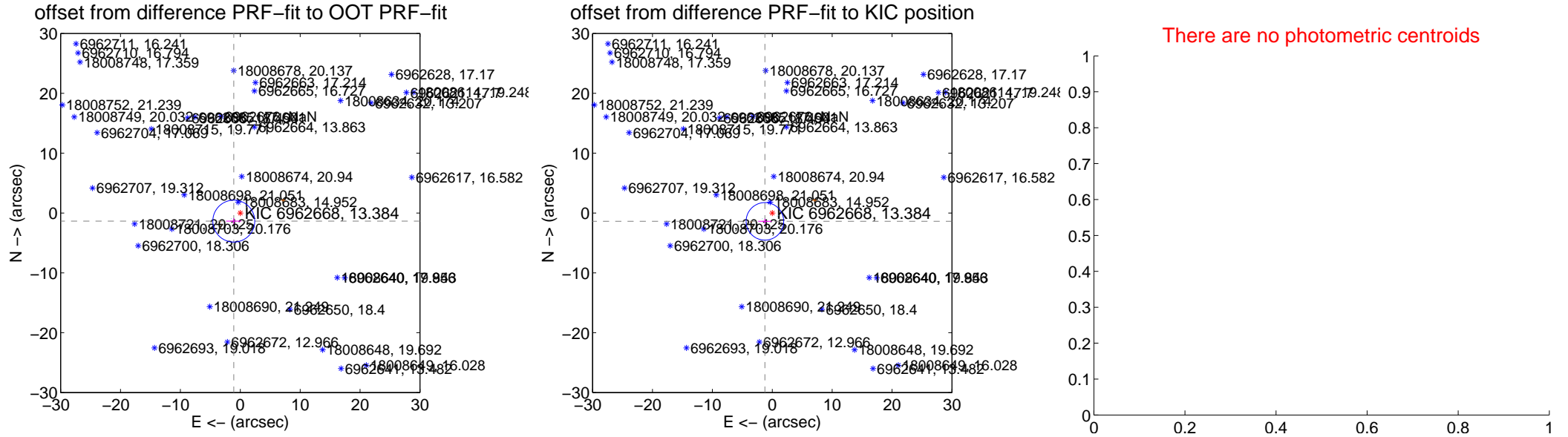
DV Centroid Data

Supplemental centroid analysis for 006962668-01. Kepler magnitude: 13.38. Transit SNR 1.59

There are 3 quarters with good PRF difference image offsets

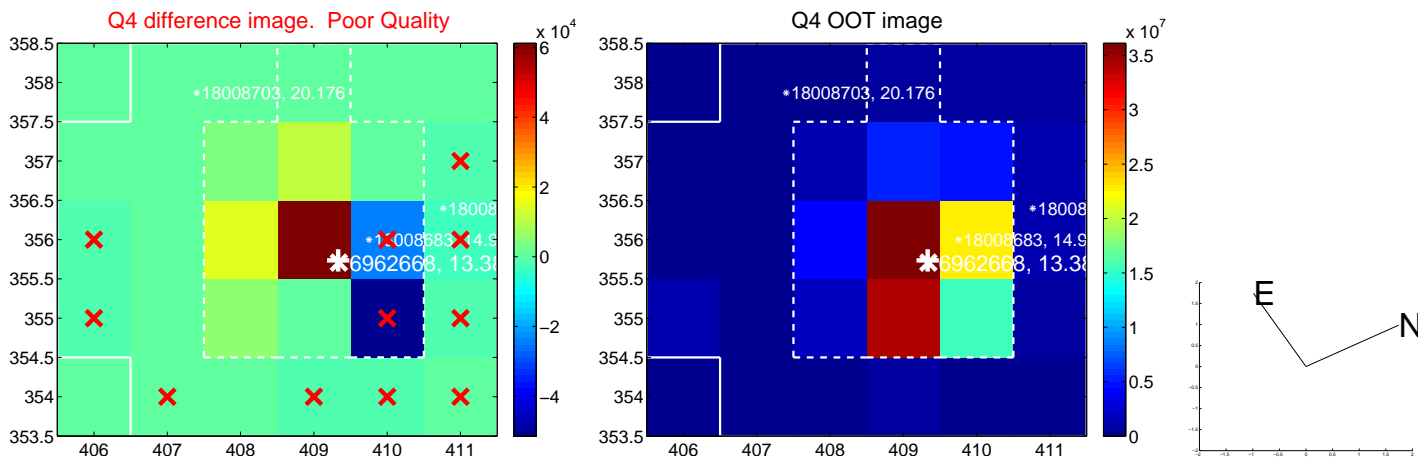
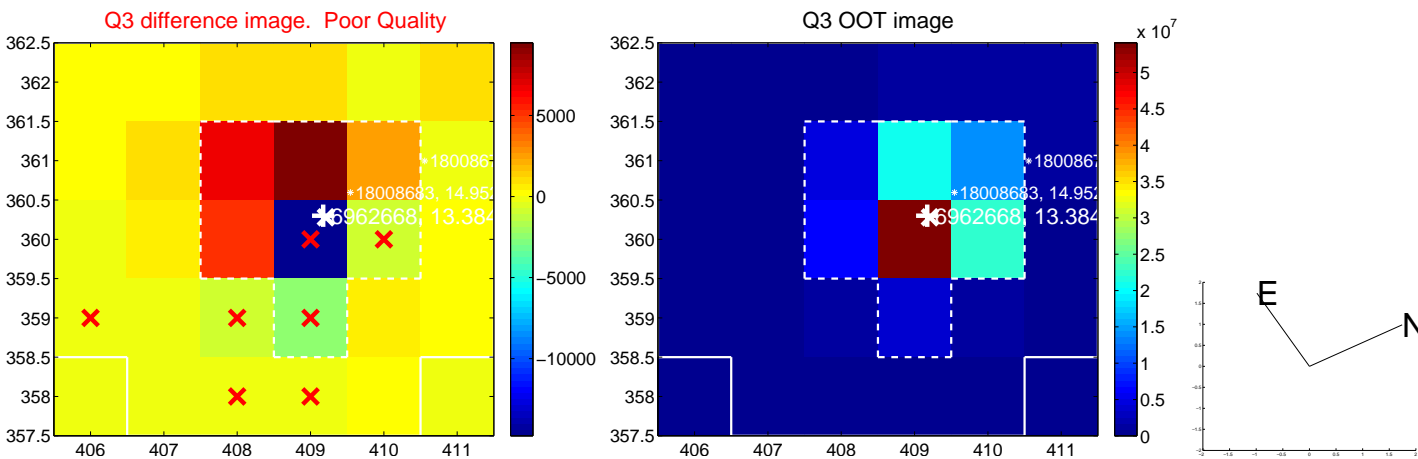
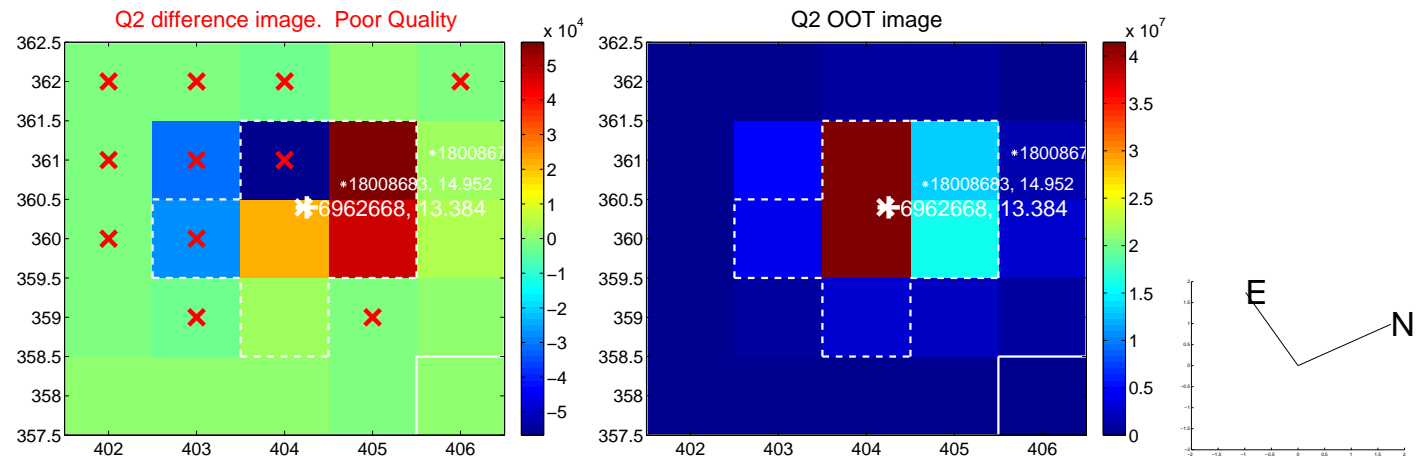
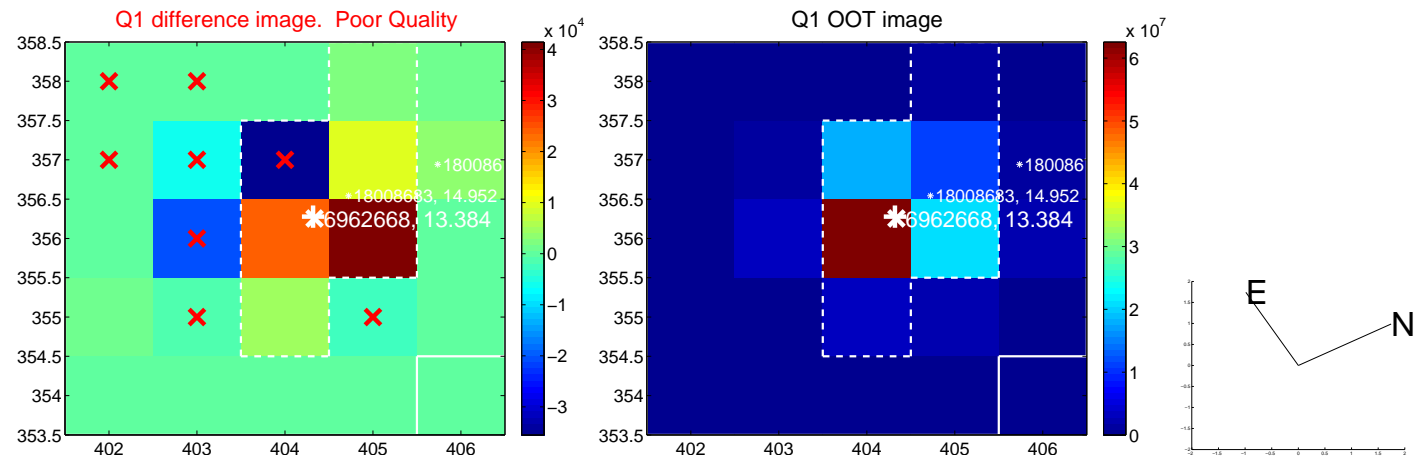
The direct PRF centroid is offset from the target star catalog position by about 0.13 arcsec

	Distance in arcsec	Distance / σ	Δ RA	Δ Dec
PRF-fit source offset from OOT	1.734 ± 1.167	1.49	1.084 ± 1.273	-1.353 ± 0.489
PRF-fit source offset from KIC position	1.854 ± 1.046	1.77	1.226 ± 1.117	-1.391 ± 0.427
photometric centroid source offset	—	—	—	—

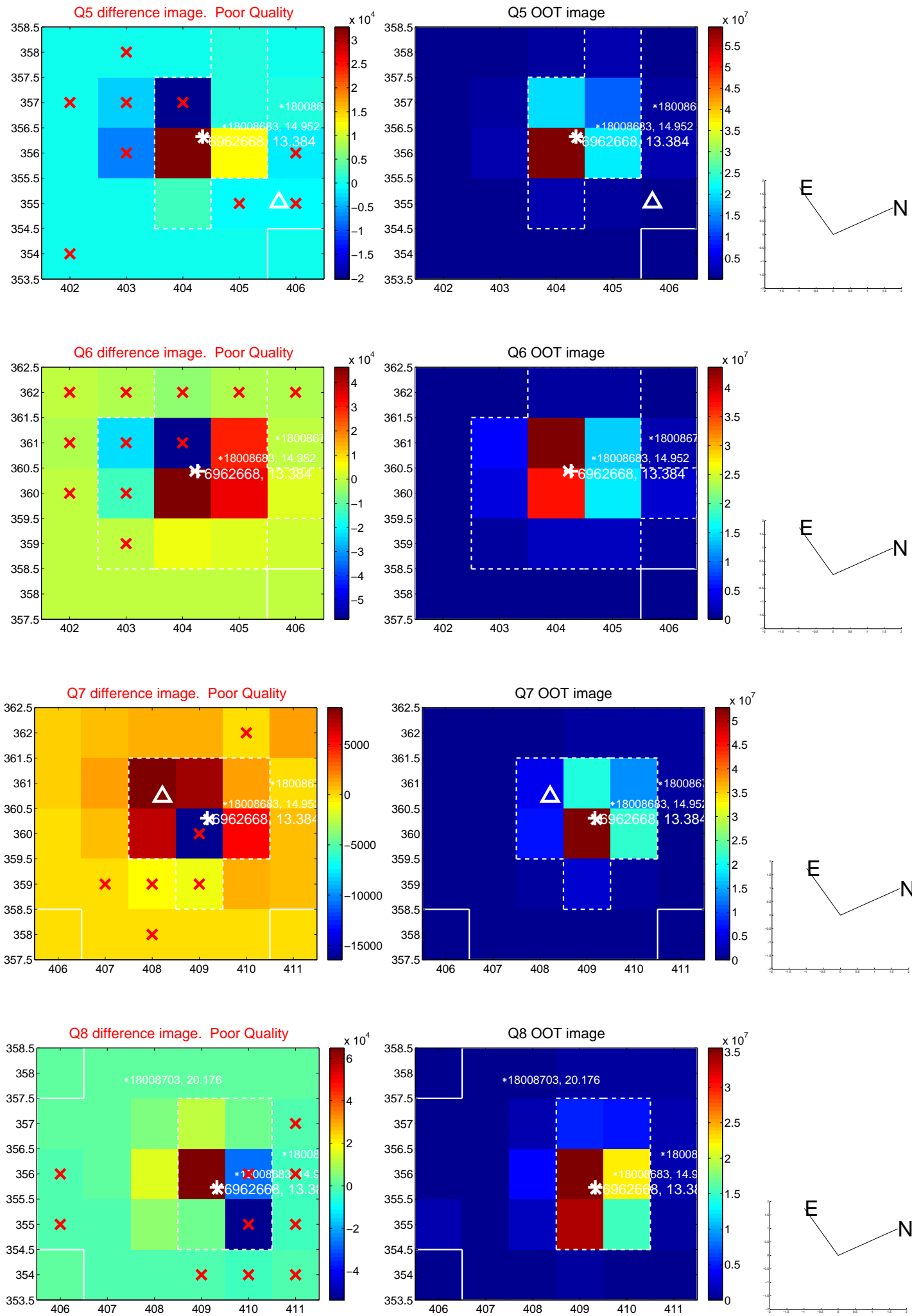


Centroid source offsets from the target star reconstructed from PRF and photometric centroids. Sky blue crosses: good quarterly centroid offsets; Vermillion crosses: bad quarterly centroid offsets; magenta cross: average over quarters. Length of the crosses: one- σ uncertainty. Blue circle: three- σ . Red *: target star. Blue *: Other stars. Text next to a star gives its KIC ID and kepmag. KIC IDs > 15,000,000 are from the UKIRT catalog.

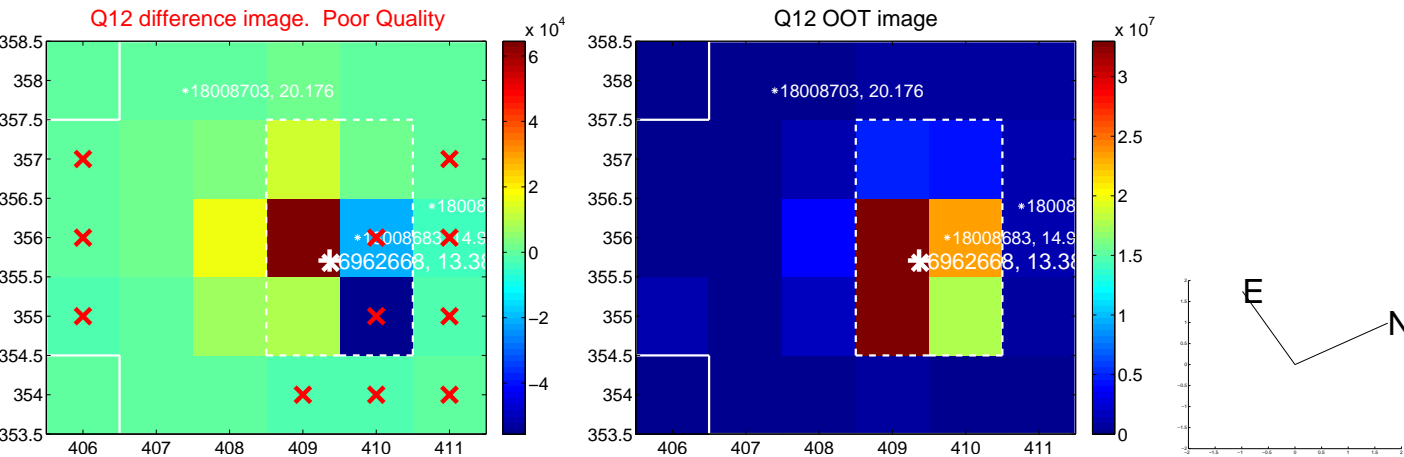
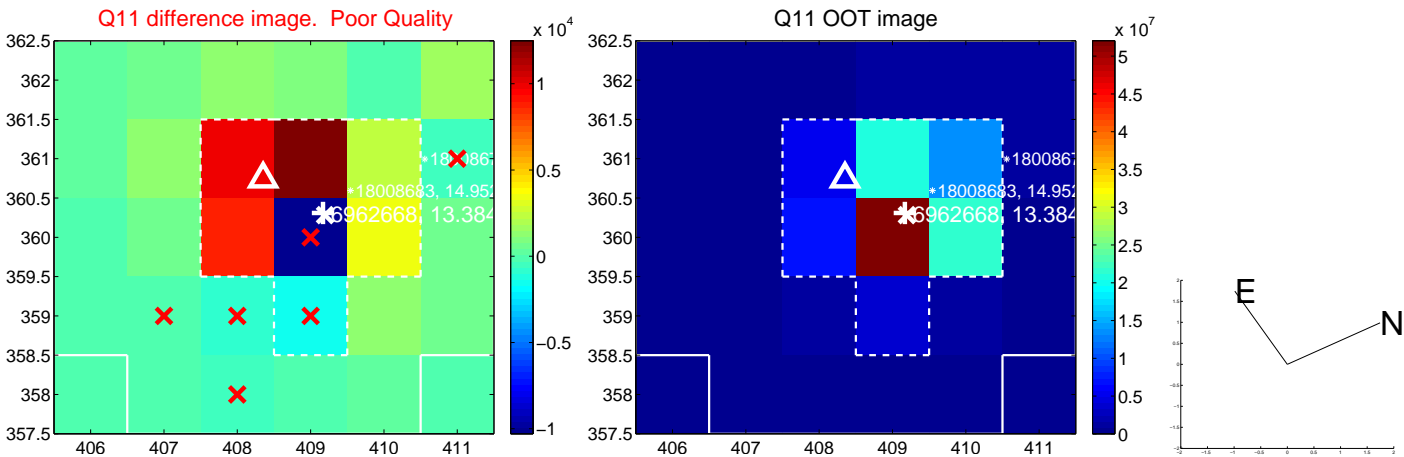
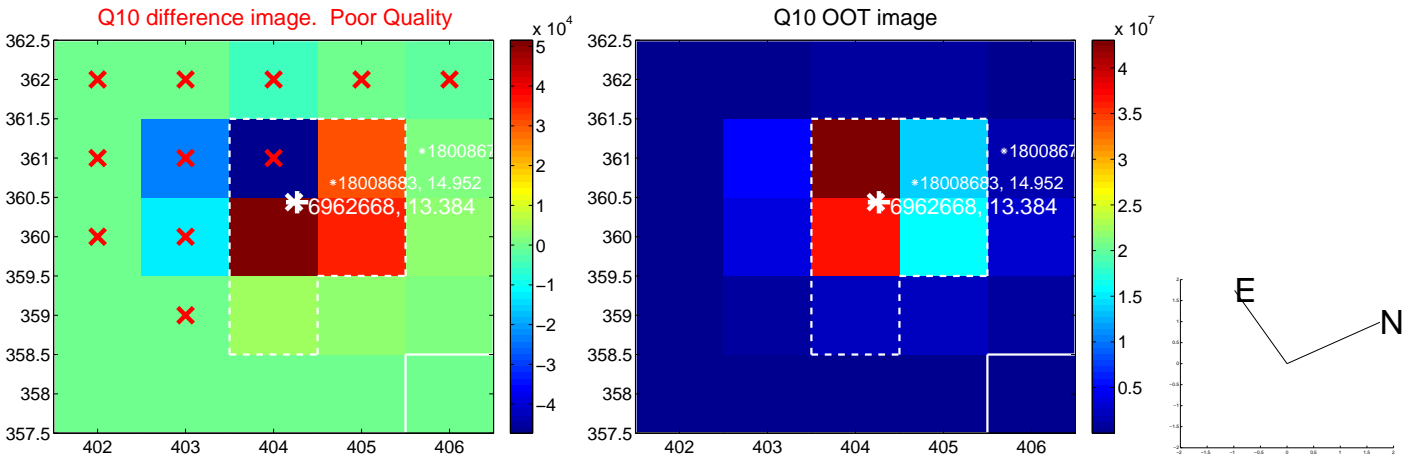
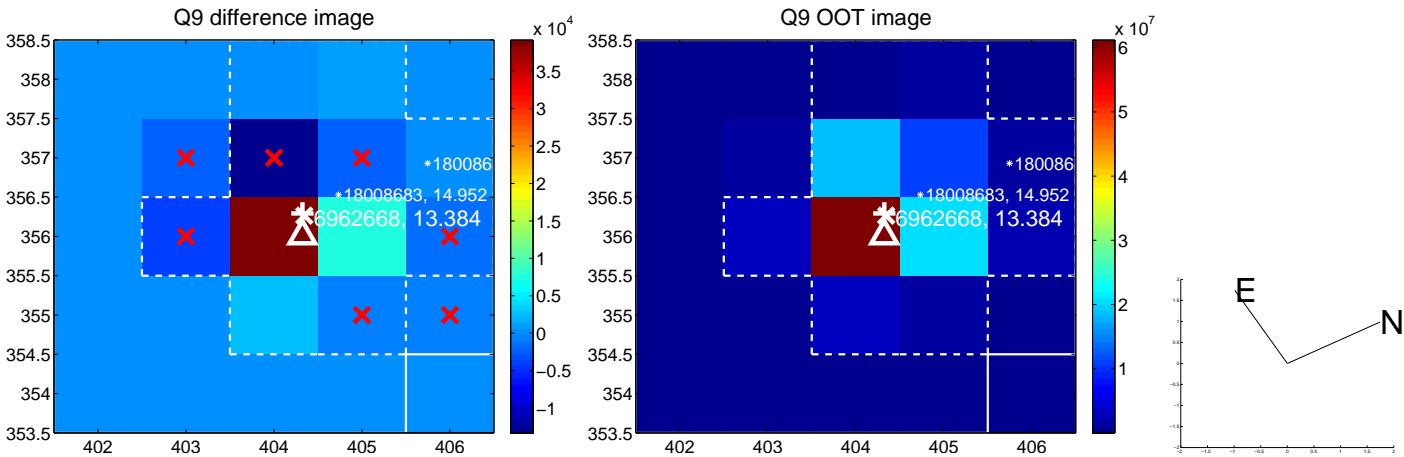
white \times : KIC target position; +: OOT centroid; \triangle : difference centroid. red \times : large negative pixel value.



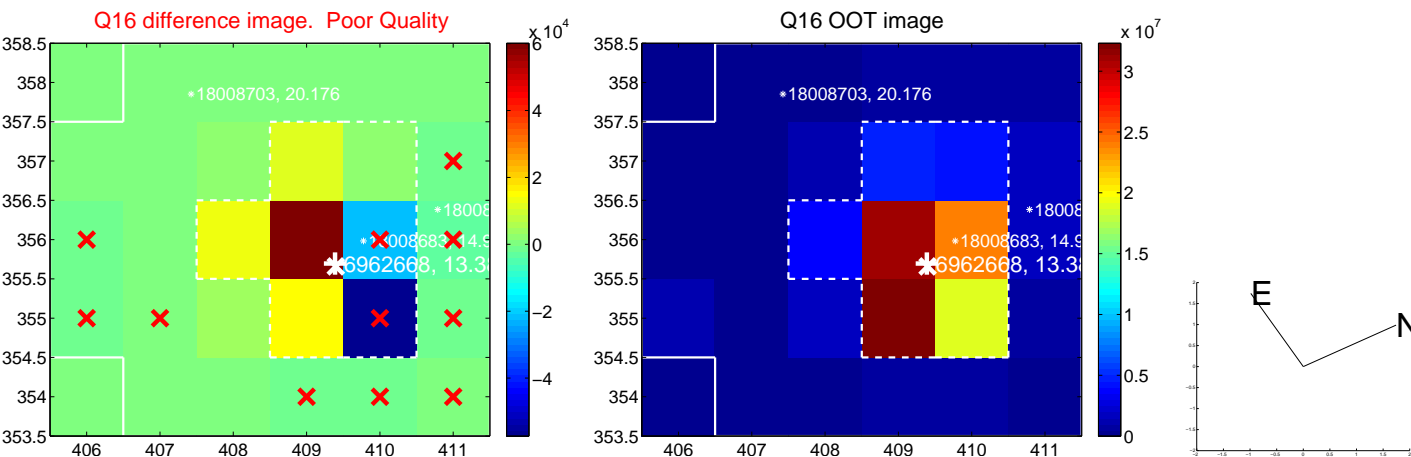
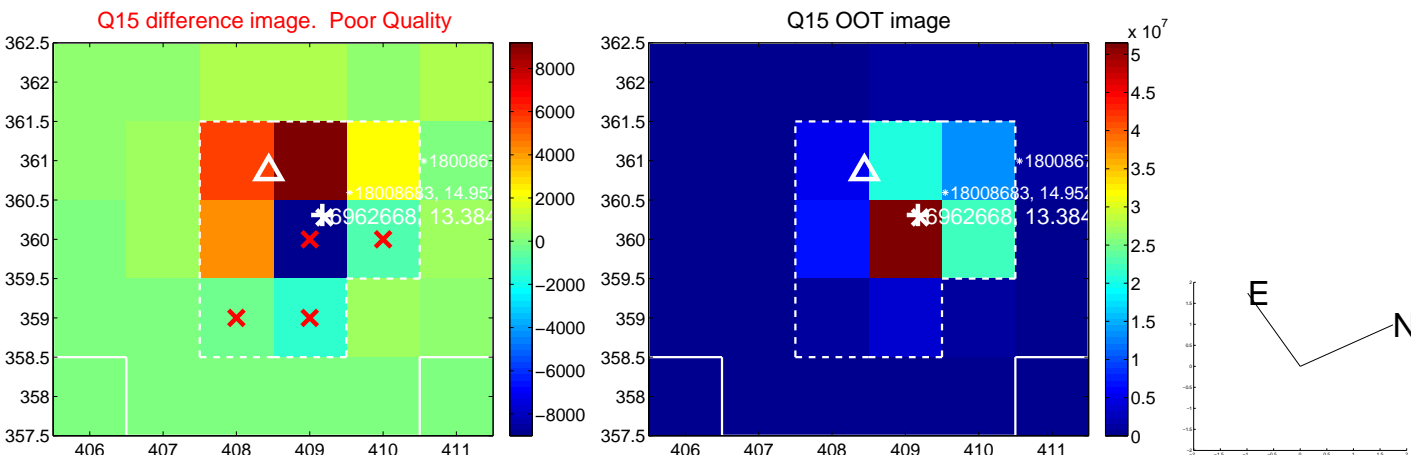
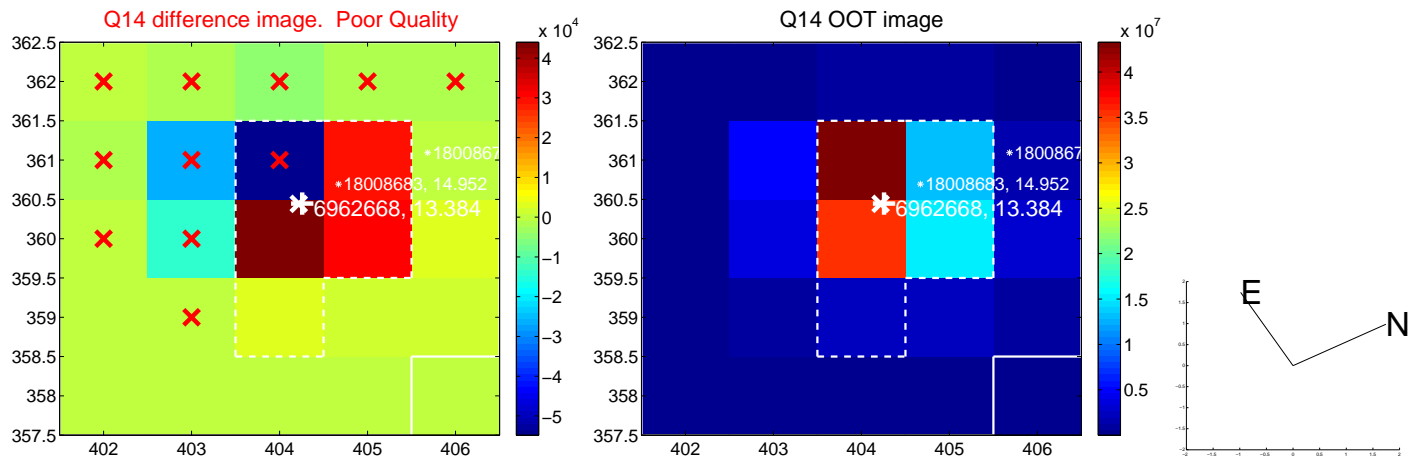
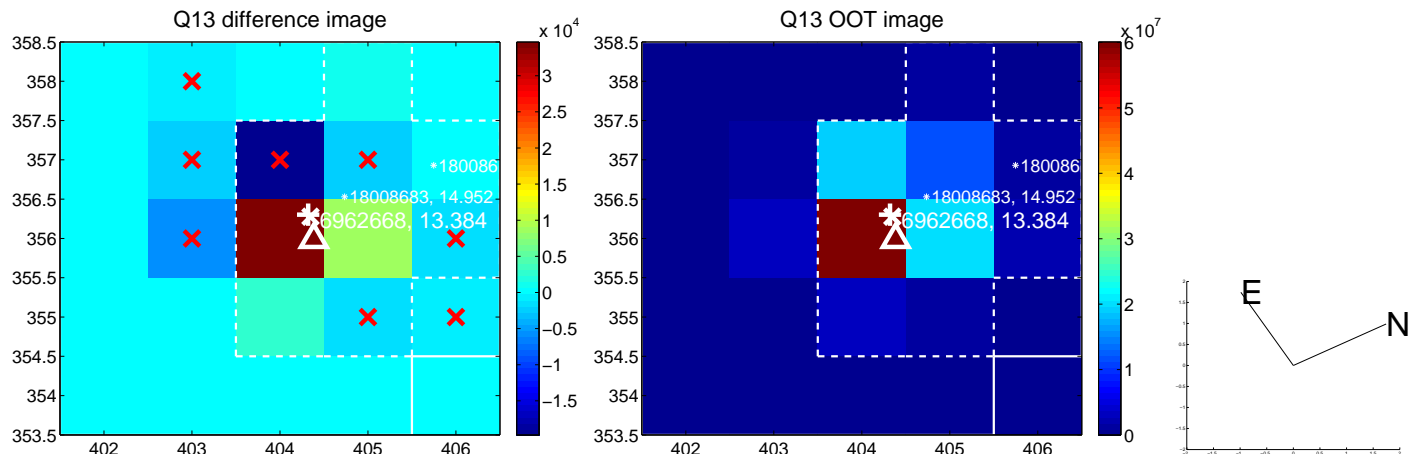
white \times : KIC target position; +: OOT centroid; \triangle : difference centroid. red \times : large negative pixel value.



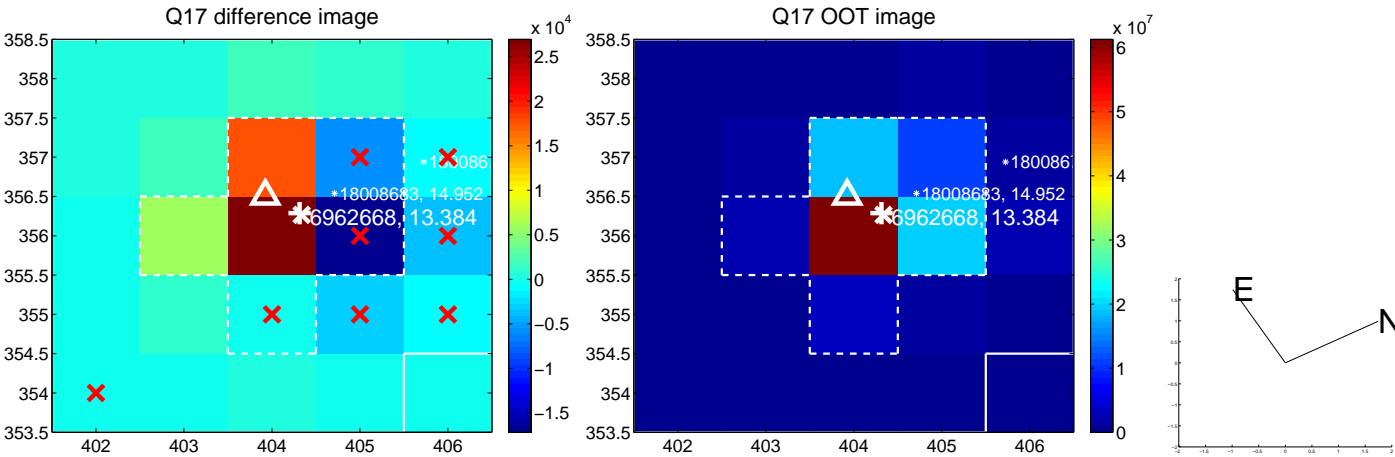
white \times : KIC target position; +: OOT centroid; \triangle : difference centroid. red \times : large negative pixel value.



white \times : KIC target position; $+$: OOT centroid; \triangle : difference centroid. red \times : large negative pixel value.



white \times : KIC target position; $+$: OOT centroid; \triangle : difference centroid. red \times : large negative pixel value.



folded centroid time series figure for this object.

UKIRT Image

