

KIC 006380217

Q1-17 DR25 TCE Parameters

TCE	Run Type	KOI?	Period (Days)	Epoch (BKJD)	Depth (ppm)	Duration (Hours)	MES	SNR	R_{\star} (R_{\odot})	T_{\star} (K)	R_p (R_{\oplus})	S_p (S_{\oplus})
006380217-01	OBS	No	0.836414	131.986946	2.2	6.459	9.5	1.9	3.04	7112	0.52	51582.31

Robovetter Results

TCE	Run Type	Disp	Score	N	S	C	E	Comments
006380217-01	OBS	FP	0.00	1	0	0	0	SWEET_NTL—LPP_DV—LPP_ALT—MOD_NONUNIQ_DV—MOD_NONUNIQ_ALT—CENT_FEW_DIFFS

Notes: OBS = Observed. INJ = Injected. INV = Inverted. SCR = Scrambled.

N = Not Transit-Like. S = Stellar Eclipse. C = Centroid Offset. E = Ephemeris Match.

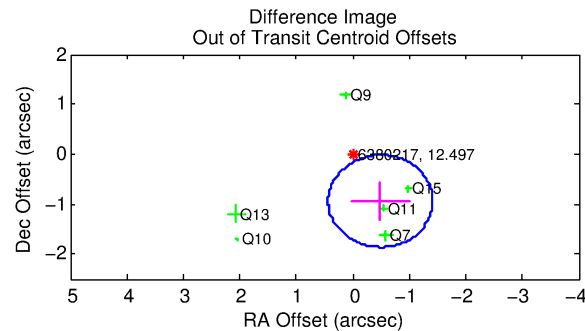
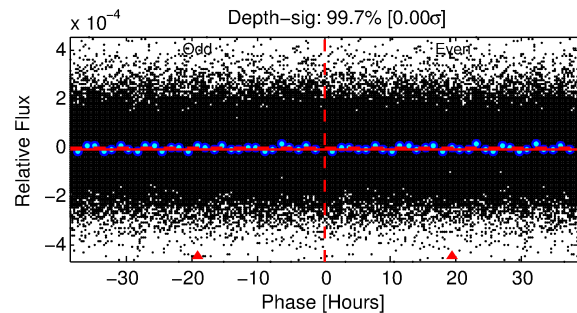
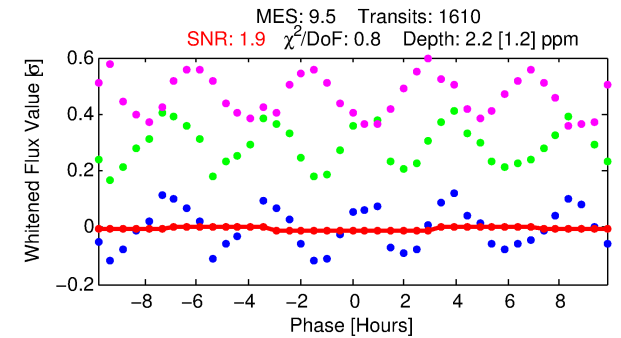
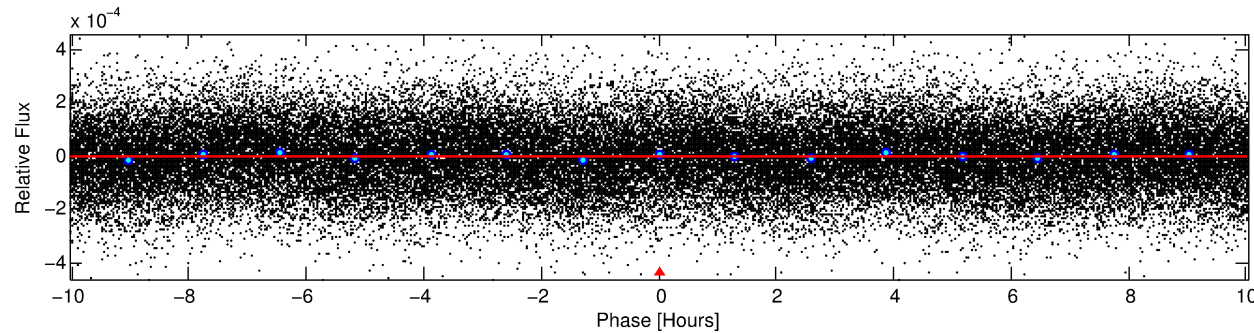
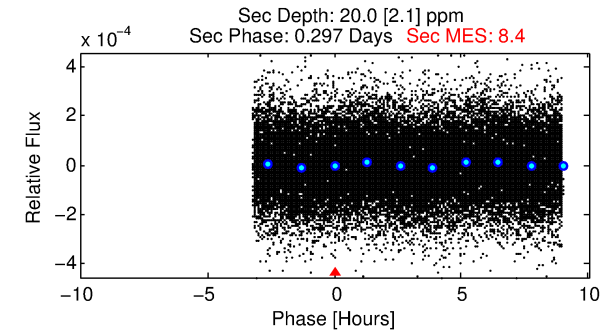
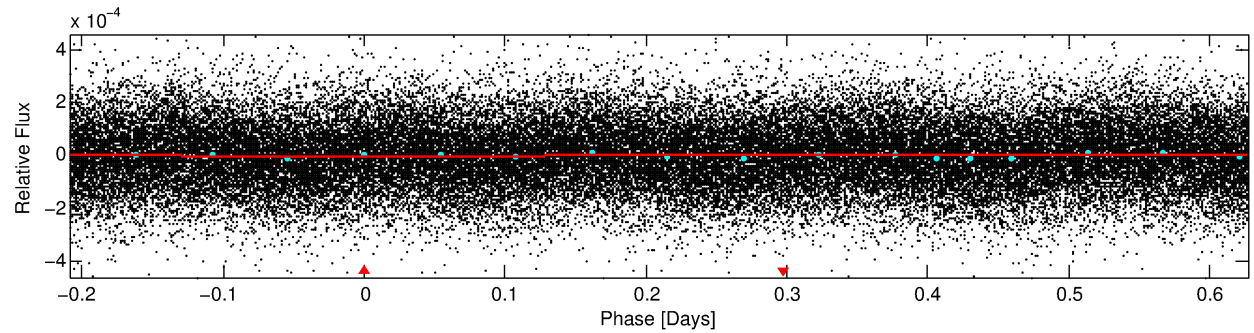
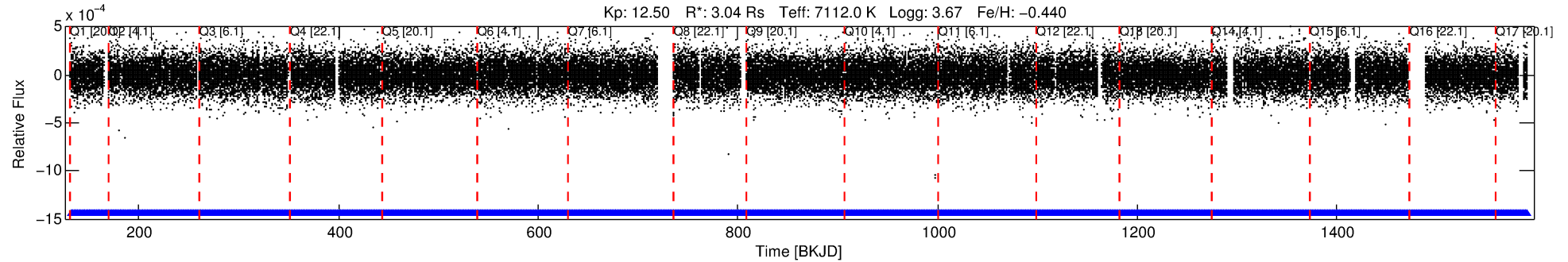
See http://exoplanetarchive.ipac.caltech.edu/docs/API_kepcandidate_columns.html#proj_disp_col for comment definitions.

Ephemeris Match Information For 006380217-01

No Significant Match Found

DV One-Page Summary

KIC: 6380217 Candidate: 1 of 1 Period: 0.836 d



DV Fit Results:

Period = 0.83641 [0.00008] d
Epoch = 131.9869 [0.0274] BKJD
Rp/R* = 0.0016 [0.0026]
a/R* = 1.04 [0.76]
b = 0.90 [2.14]
Seff = 51582.31 [27144.94]
Teff = 3843 [506] K
Rp = 0.52 [0.87] Re
a = 0.0202 [0.0065] AU
Ag = 16.56 [54.47] [0.29σ]
Teffp = 11986 [9744] K [0.83σ]

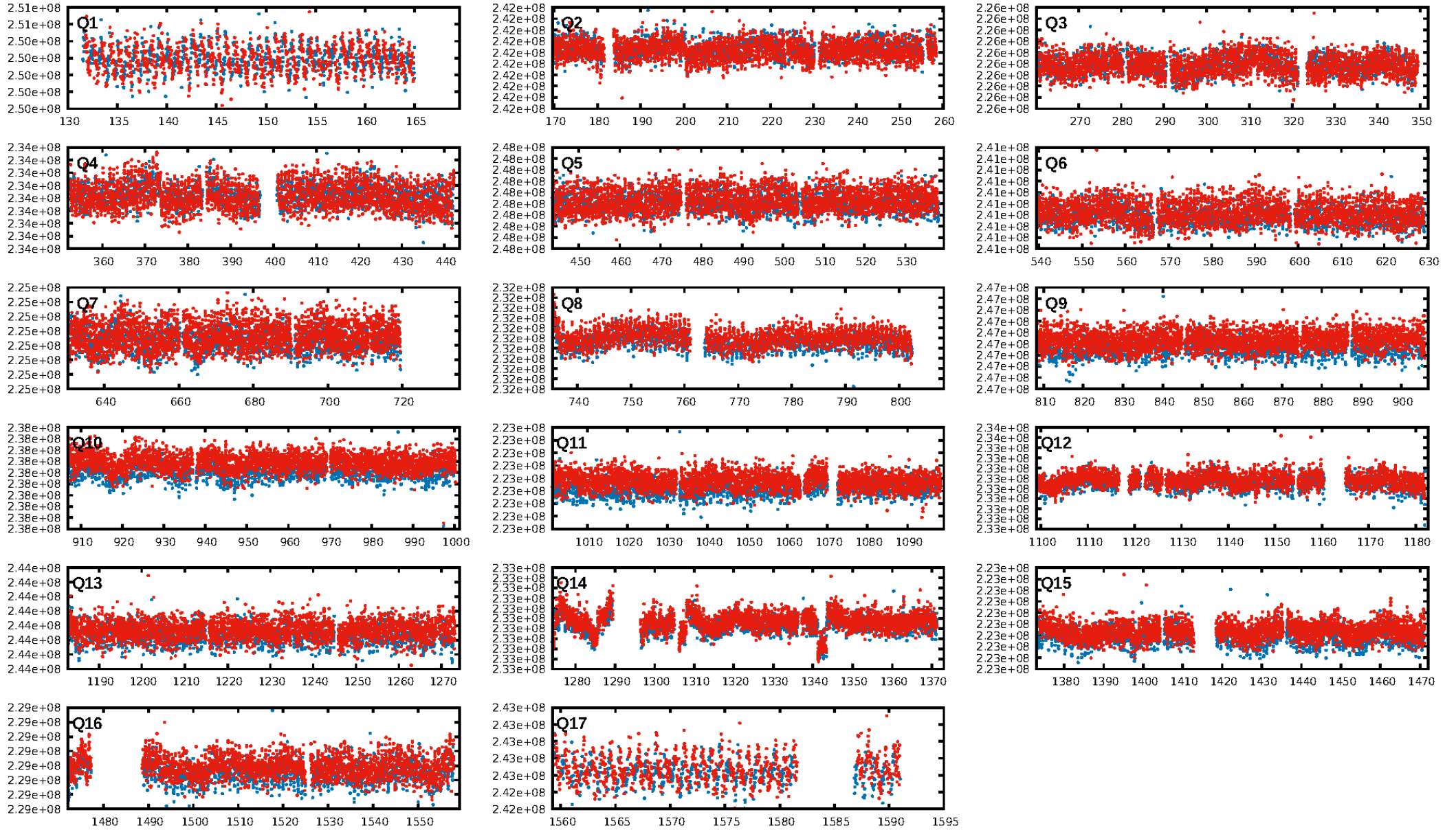
DV Diagnostic Results:

ShortPeriod-sig: N/A
LongPeriod-sig: N/A
ModelChiSquare2-sig: N/A
ModelChiSquareGof-sig: N/A
Bootstrap-pfa: 3.92e-11
RollingBand-fgt: 1.00 [1538/1538]
GhostDiagnostic-chr: N/A
Centroid-sig: N/A
Centroid-so: N/A
OotOffset-rm: 1.058 arcsec [3.44σ]
KicOffset-rm: 0.676 arcsec [1.91σ]
OotOffset-st: 1/3/0/2 [6]
KicOffset-st: 1/3/0/2 [6]
DiffImageQuality-fgm: 0.00 [0/6]
DiffImageOverlap-fno: 1.00 [17/17]

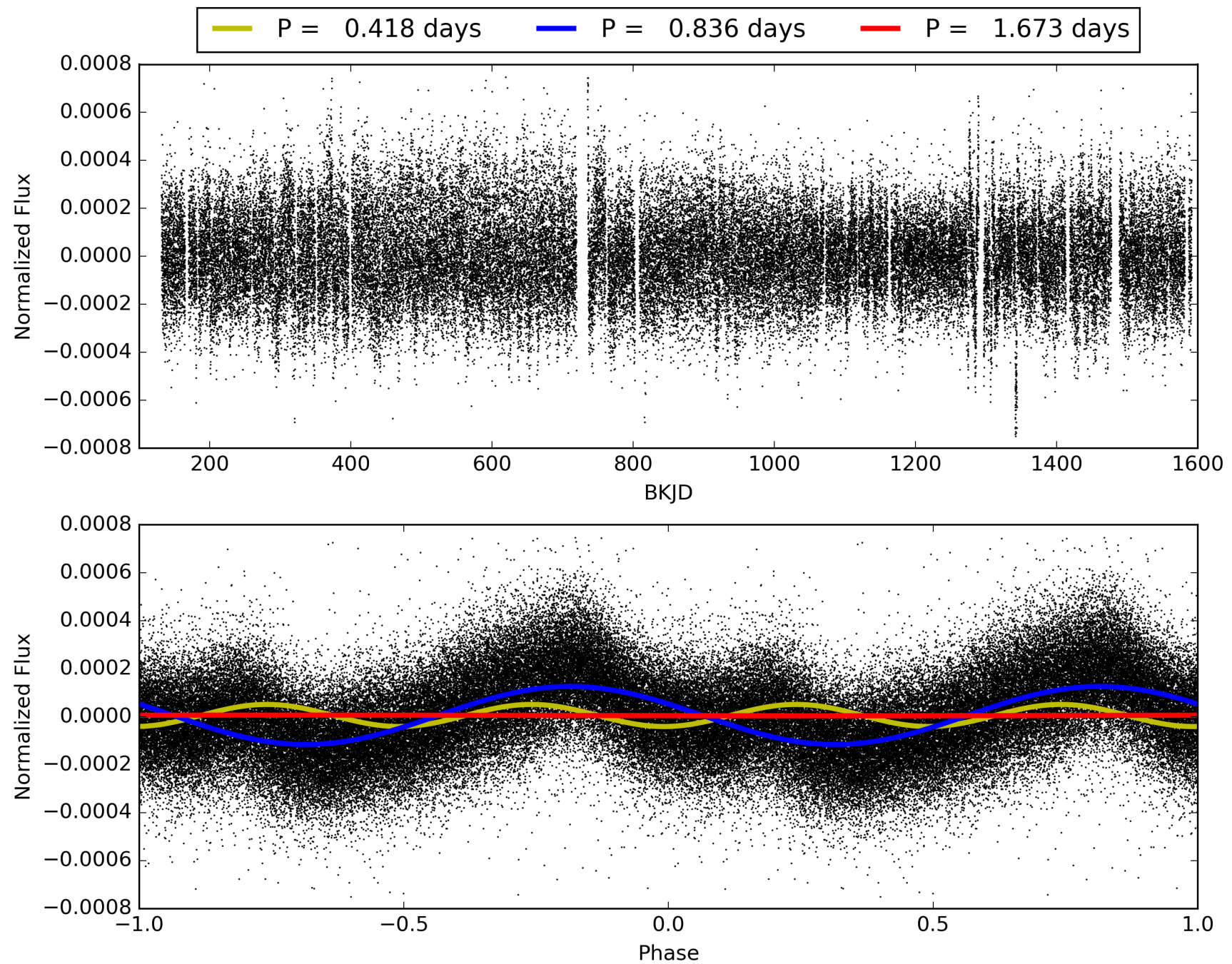
Software Revision: svn+ssh://murzim/repo/soc/tags/release/9.3.42@60958 -- Date Generated: 30-Jan-2016 12:53:38 Z

This Data Validation Report Summary was produced in the Kepler Science Operations Center Pipeline at NASA Ames Research Center

TCE 006380217-01, PDC Light Curves

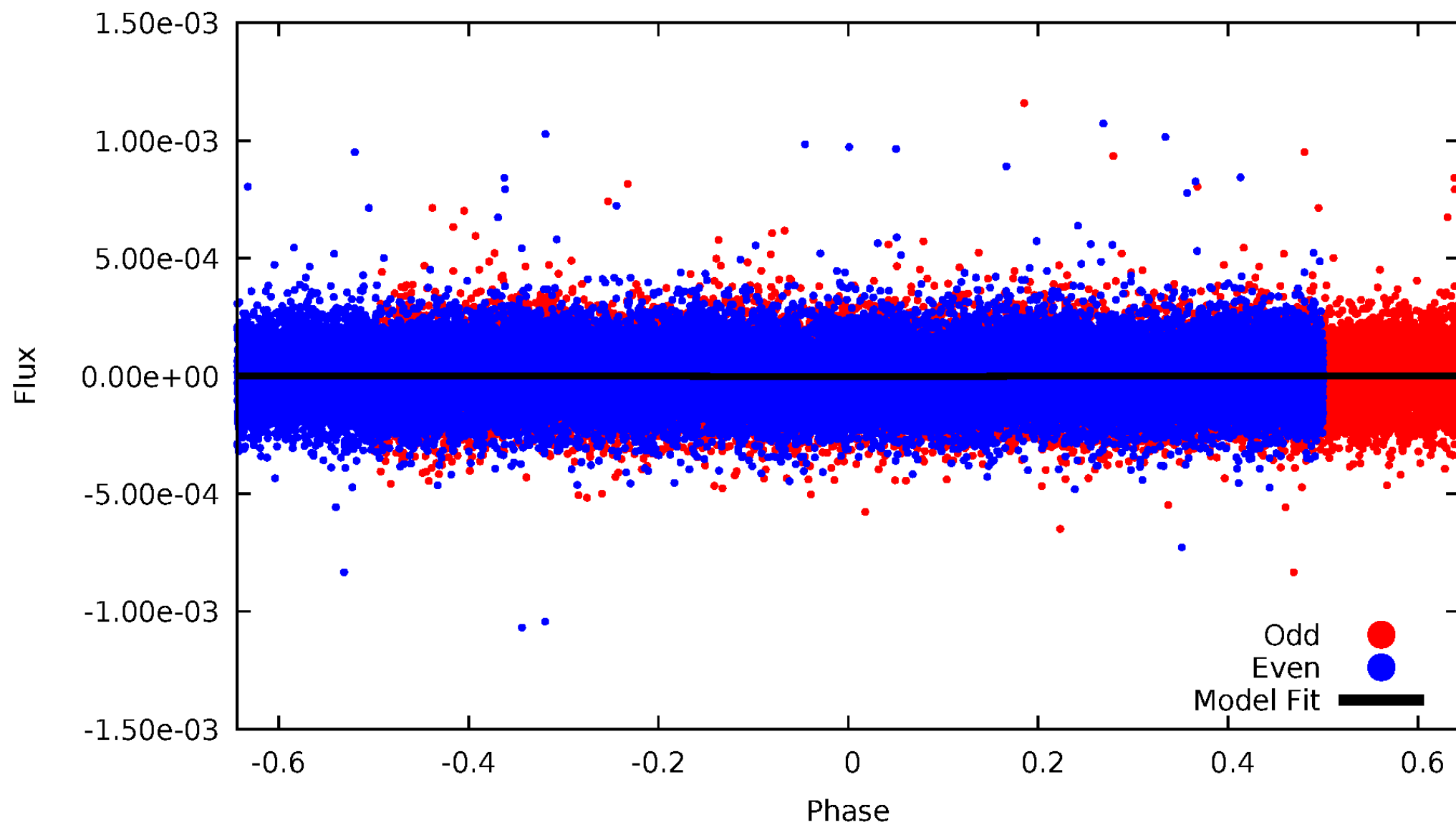


TCE 006380217-01



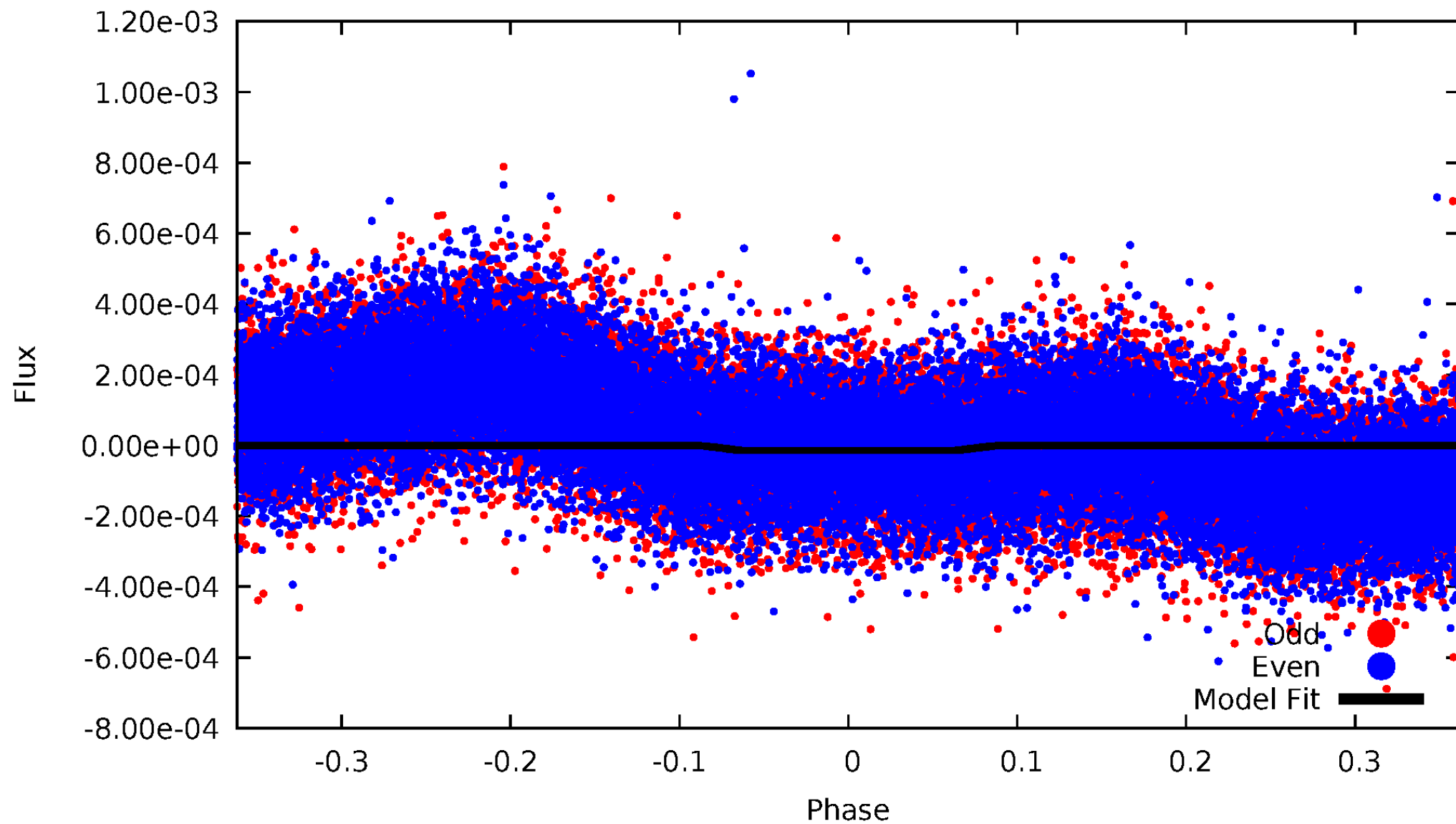
DV Odd/Even

TCE 006380217-01



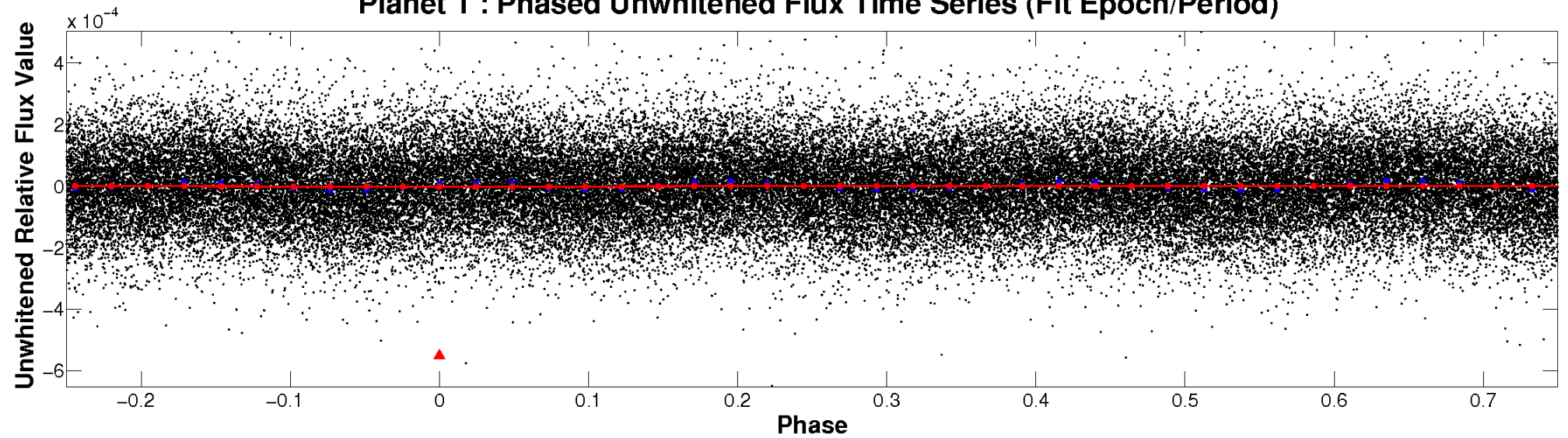
ALT Odd/Even

TCE 006380217-01

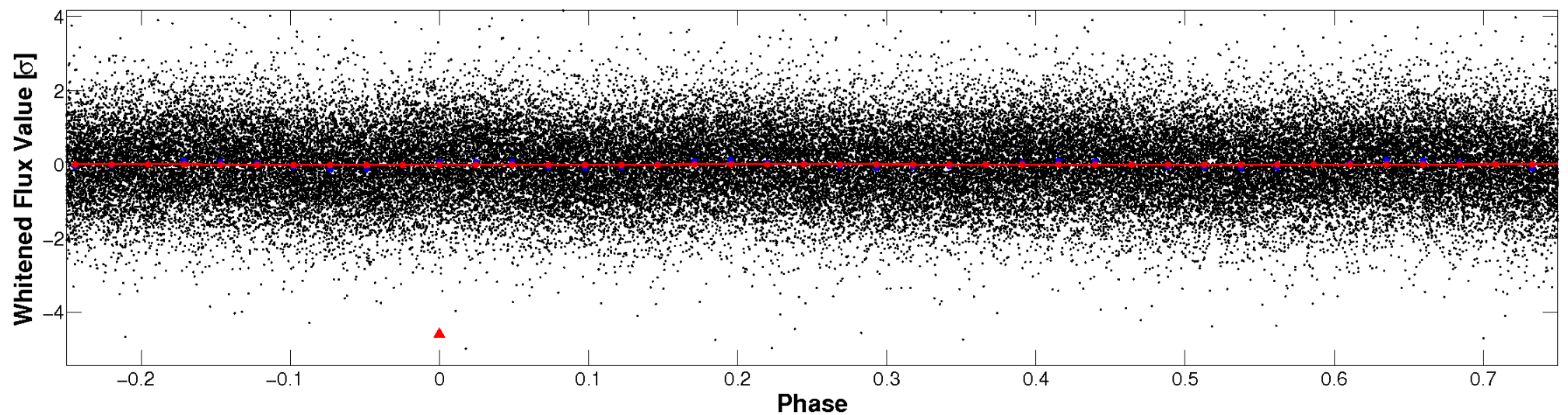


Non-Whitened Vs. Whitened Light Curve

Planet 1 : Phased Unwhitened Flux Time Series (Fit Epoch/Period)

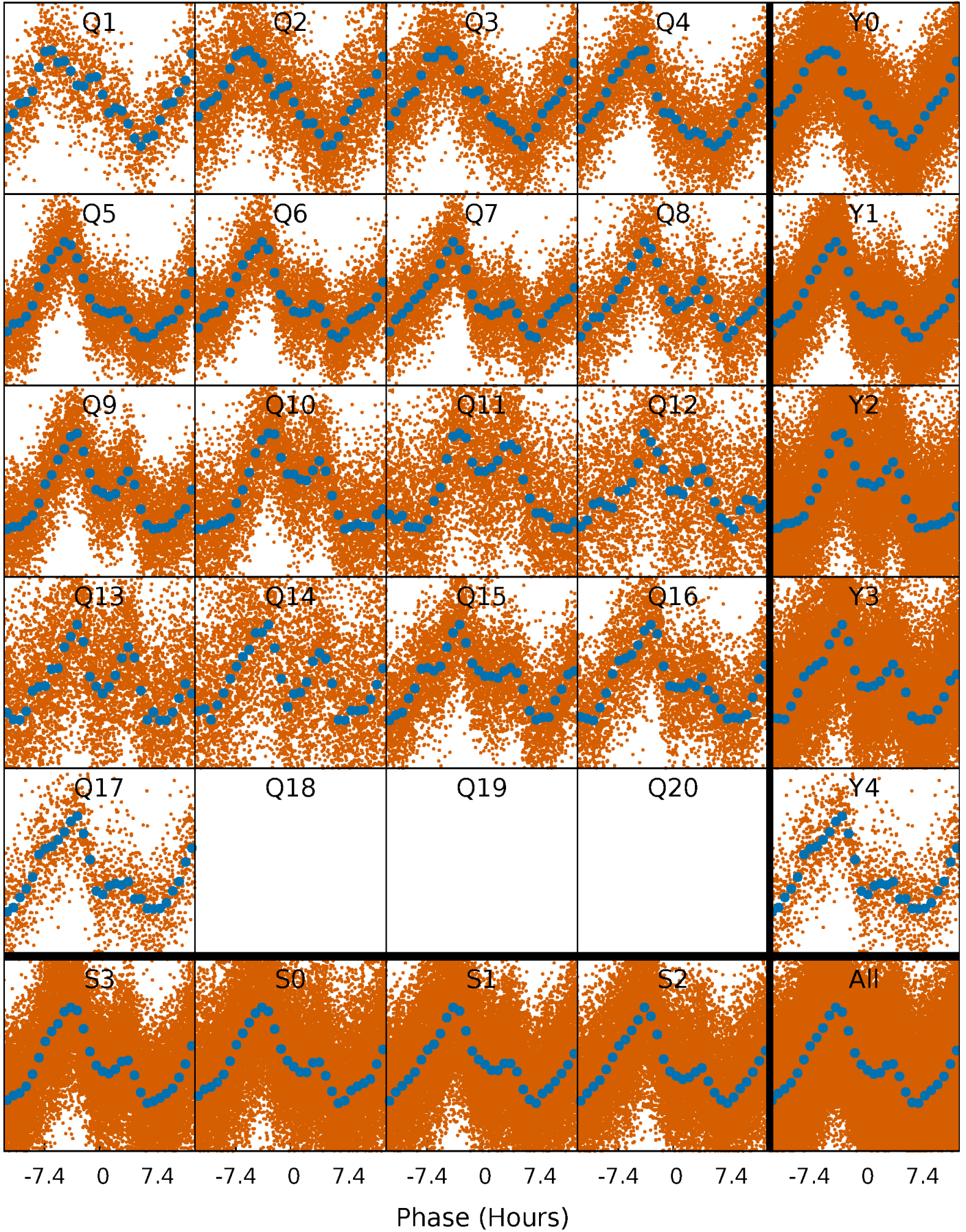


Planet 1 : Phased Whitened Flux Time Series (Fit Epoch/Period)



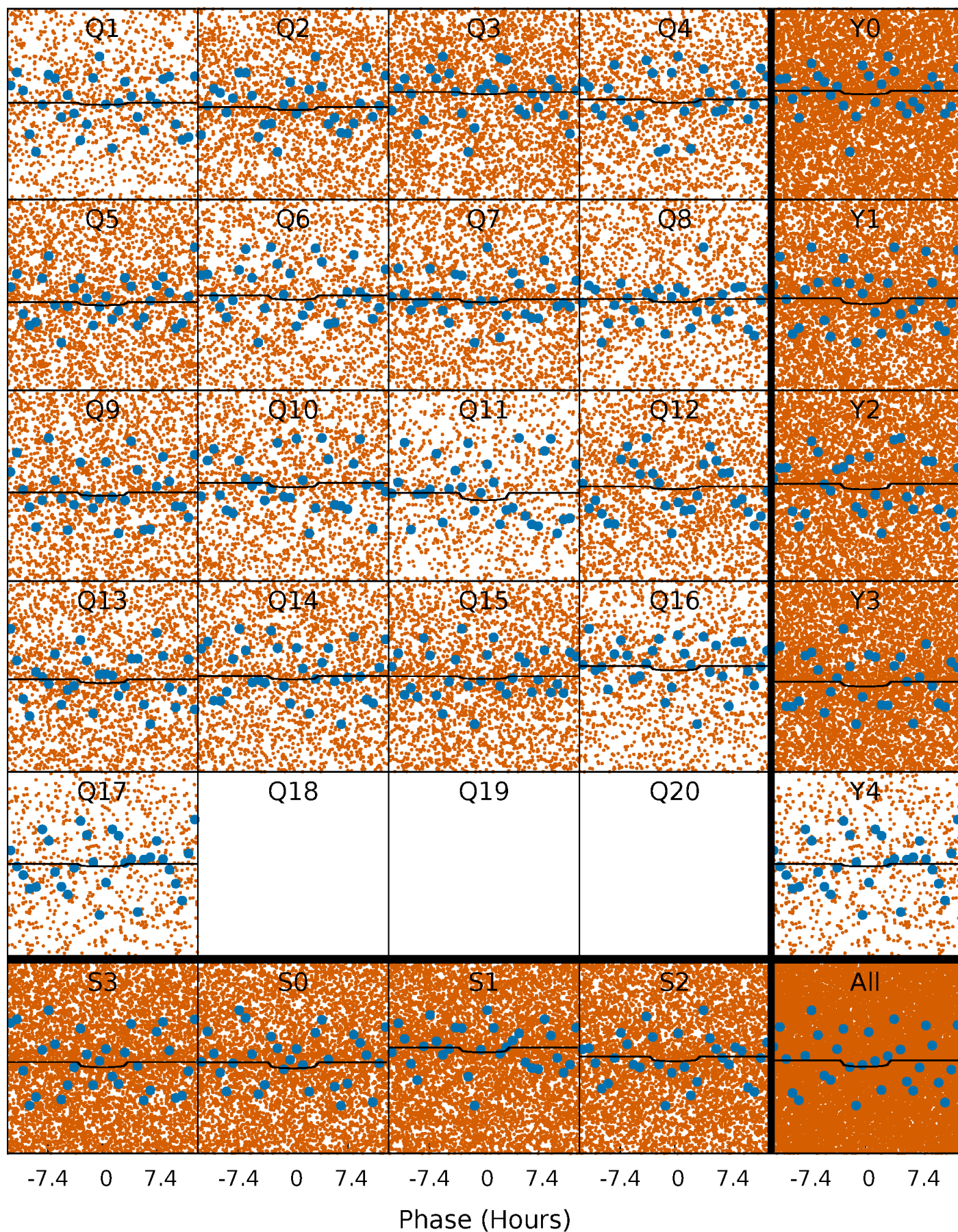
PDC Quarter-Phased Transit Curves

TCE 006380217-01 P= 0.836414 Days $T_0=131.986945$ (BKJD)



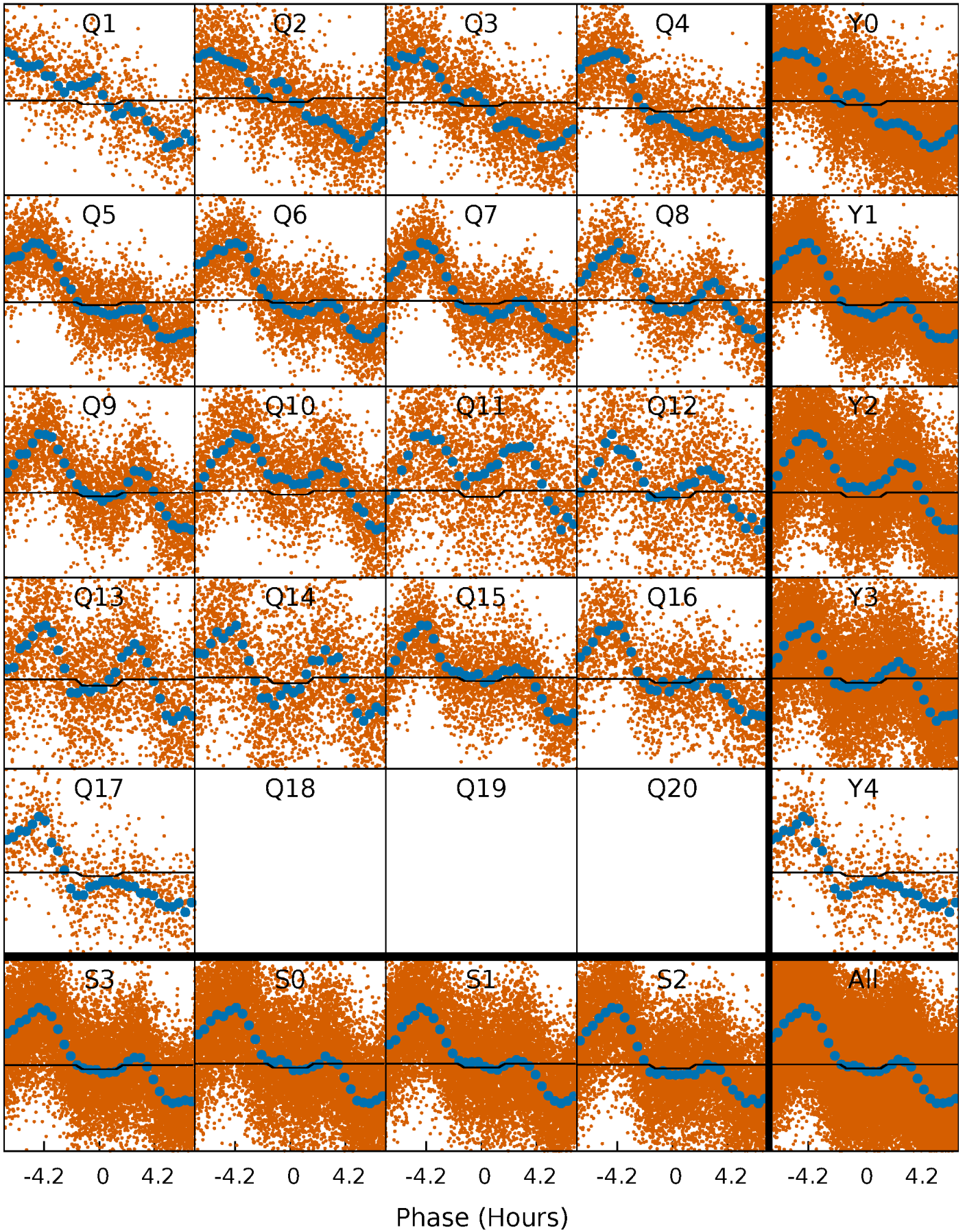
DV Quarter-Phased Transit Curves

TCE 006380217-01 P= 0.836414 Days $T_0=131.986945$ (BKJD)



Alt. Detrend Quarter-Phased Transit Curves

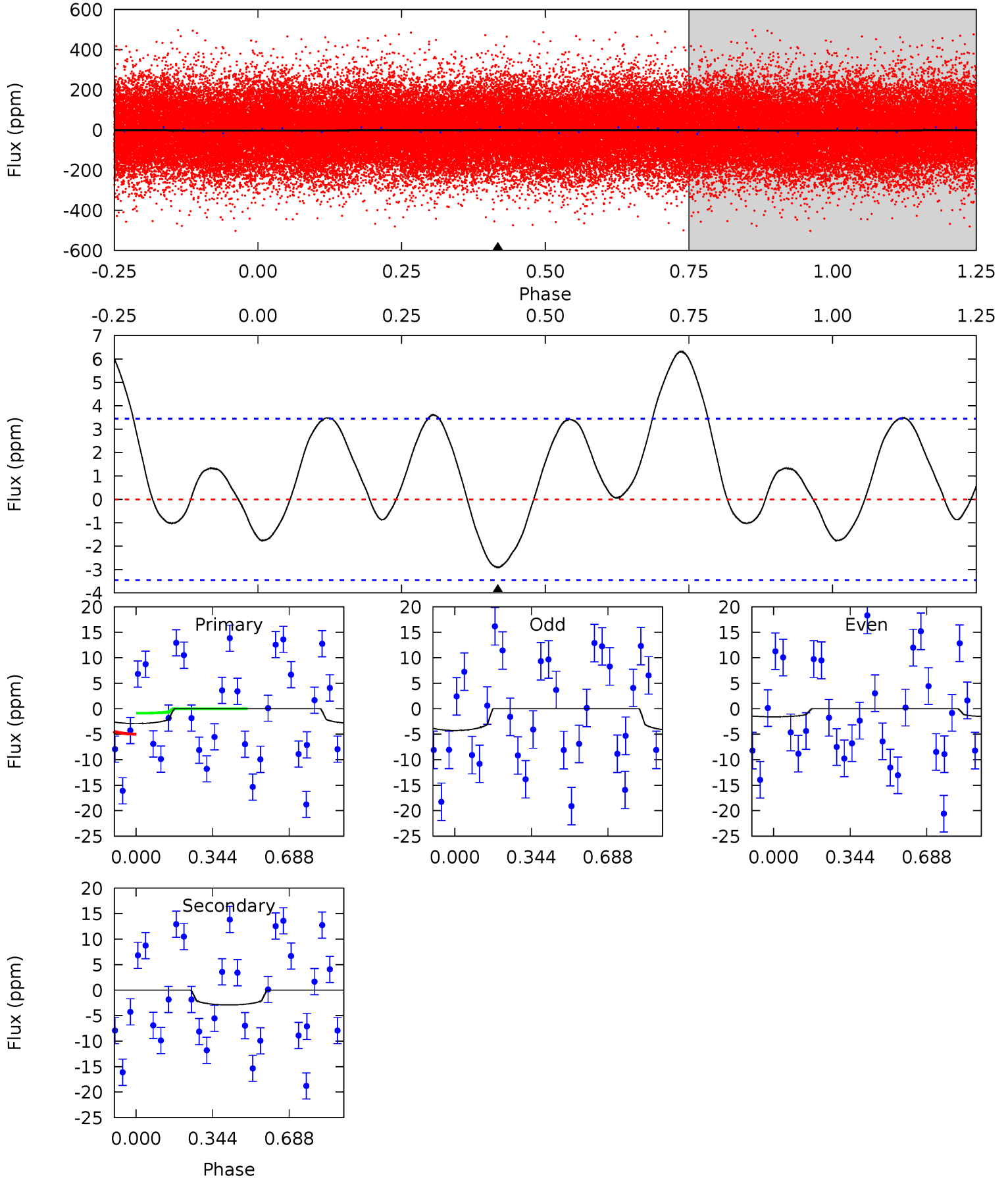
TCE 006380217-01 P= 0.836451 Days $T_0=131.988629$ (BKJD)



DV Model-Shift Uniqueness Test

006380217-01, P = 0.836414 Days, E = 131.150531 Days

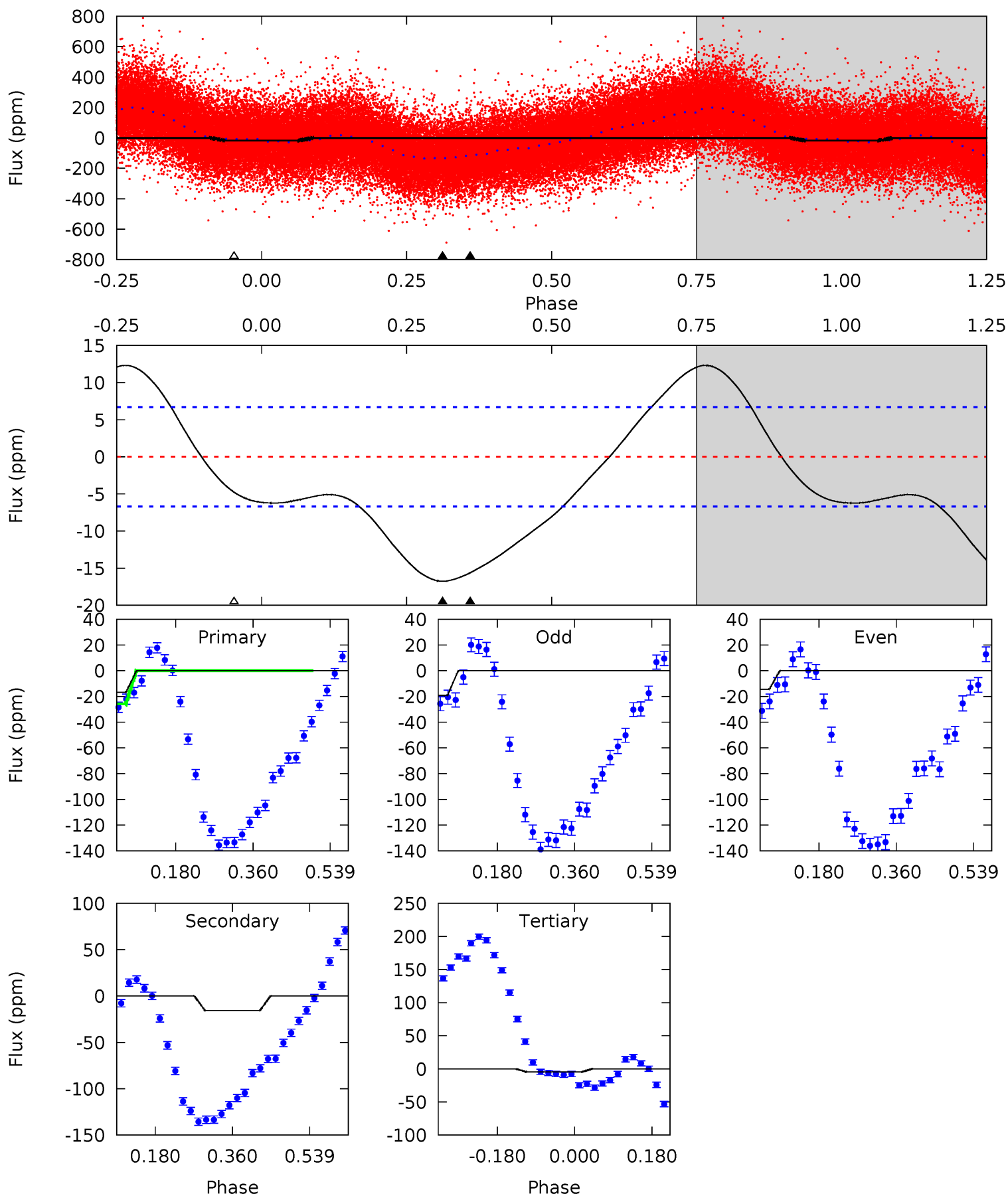
Pri	Sec	Ter	Pos	FA ₁	FA ₂	F _{Red}	Pri-Ter	Pri-Pos	Sec-Ter	Sec-Pos	Odd-Evn	DMM	Shape	TAT
3.62	3.62	0	0	4.30	0.95	1.99	3.62	3.62	3.62	3.62	1.68	0.79	0.68	2.56



Alt Model-Shift Uniqueness Test

006380217-01, P = 0.836451 Days, E = 131.152178 Days

Pri	Sec	Ter	Pos	FA ₁	FA ₂	F _{Red}	Pri-Ter	Pri-Pos	Sec-Ter	Sec-Pos	Odd-Evn	DMM	Shape	TAT
11.1	10.3	3.15	0	4.44	1.34	4.38	7.95	11.1	7.19	10.3	1.59	1.05	0.42	5.26



Stellar Parameters For KIC 006380217

	$T_{\text{eff}}(K)$	$\log(g)$	[Fe/H]	$R (R_{\odot})$	$M(M_{\odot})$	$p_{\star} (g \cdot \text{cm}^{-3})$
	7112^{+193}_{-236}	$3.672^{+0.296}_{-0.074}$	$-0.440^{+0.300}_{-0.250}$	$3.036^{+0.374}_{-1.047}$	$1.580^{+0.229}_{-0.306}$	$0.080^{+0.162}_{-0.019}$
	+3%/-3%	+8%/-2%	+68%/-57%	+12%/-34%	+14%/-19%	+204%/-24%
Source	PHO1	FLK73	KIC0	DSEP		

KIC = Kepler Input Catalog; PHO = Photometry; SPE = Spectroscopy; AST = Asteroseismology
 TRA = Transits; DESP = Dartmouth Models; MULT = Multiple Models

Secondary Eclipse Parameters for KIC 006380217-01 / KOI

Detrend	Depth (ppm)	$R_p (R_{\oplus})$	$T_{max} (K)$	$T_{obs} (K)$	A_{obs}
DV	-3 ± 1	$0.77^{+0.76}_{-0.50}$	5247^{+299}_{-424}	5310^{+5896}_{-8415}	$1.077^{+7.936}_{-0.815}$
Alt.	-16 ± 2	$1.18^{+0.83}_{-0.67}$	5241^{+299}_{-446}	6904^{+6268}_{-1936}	$2.536^{+11.157}_{-1.635}$

T_{max} = Theoretical Maximum Planetary Temperature

T_{obs} = Observed Planetary Temperature (Assuming $A=0.3$)

A_{obs} = Observed Albedo (Assuming $T=0$)

If a secondary eclipse is present, the system is likely an EB if $T_{obs} \gg T_{max}$ AND $A_{obs} \gg 1.0$

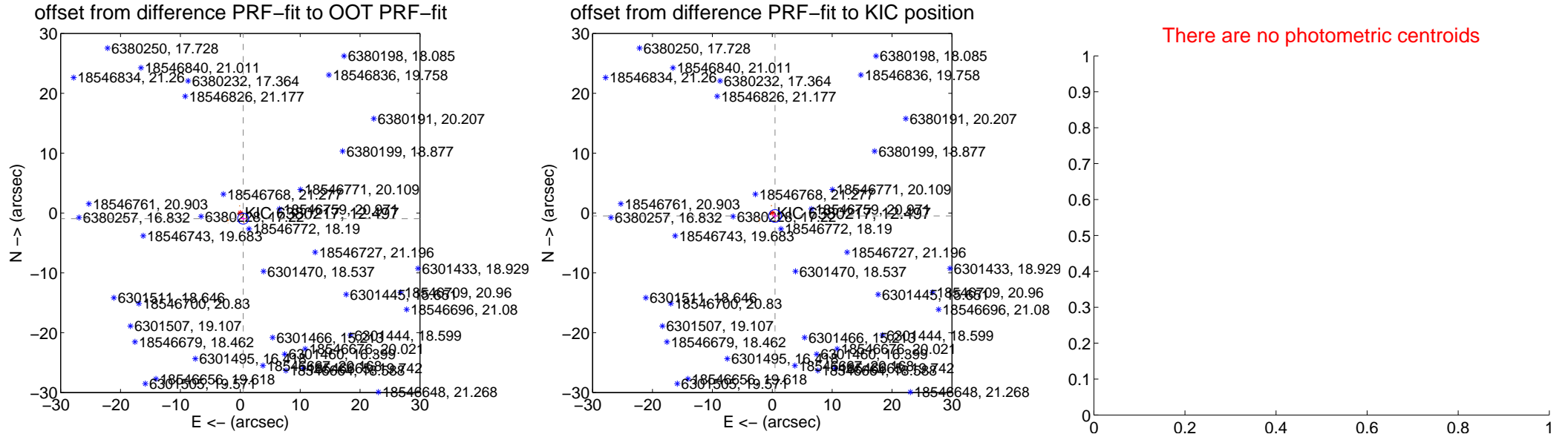
DV Centroid Data

Supplemental centroid analysis for 006380217-01. Kepler magnitude: 12.50. Transit SNR 1.92

There are 0 quarters with good PRF difference image offsets

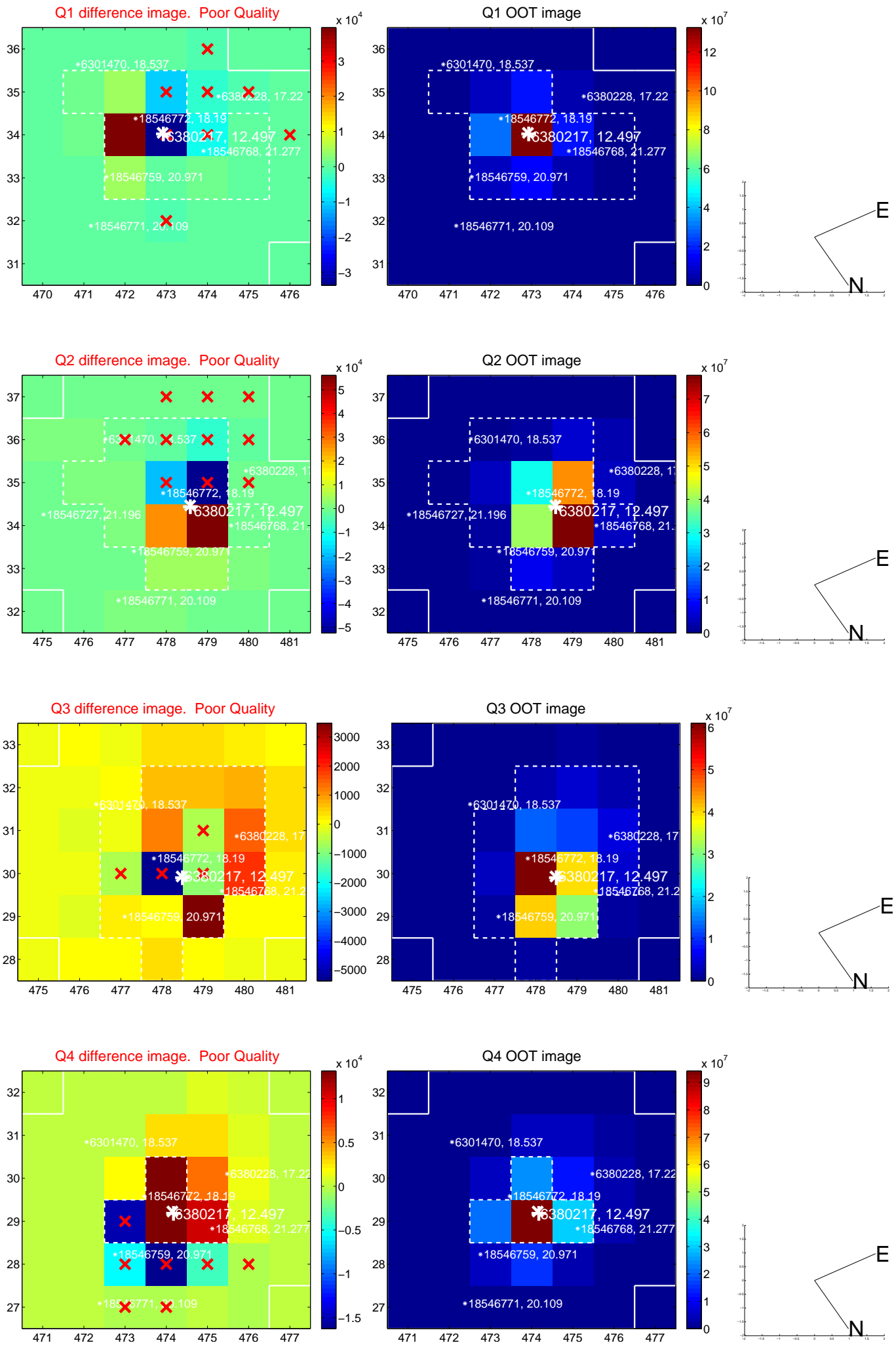
The direct PRF centroid is offset from the target star catalog position by about 0.22 arcsec

	Distance in arcsec	Distance / σ	Δ RA	Δ Dec
PRF-fit source offset from OOT	1.058 \pm 0.308	3.44	-0.486 \pm 0.516	-0.940 \pm 0.378
PRF-fit source offset from KIC position	0.676 \pm 0.353	1.91	-0.459 \pm 0.471	-0.496 \pm 0.427
photometric centroid source offset	—	—	—	—

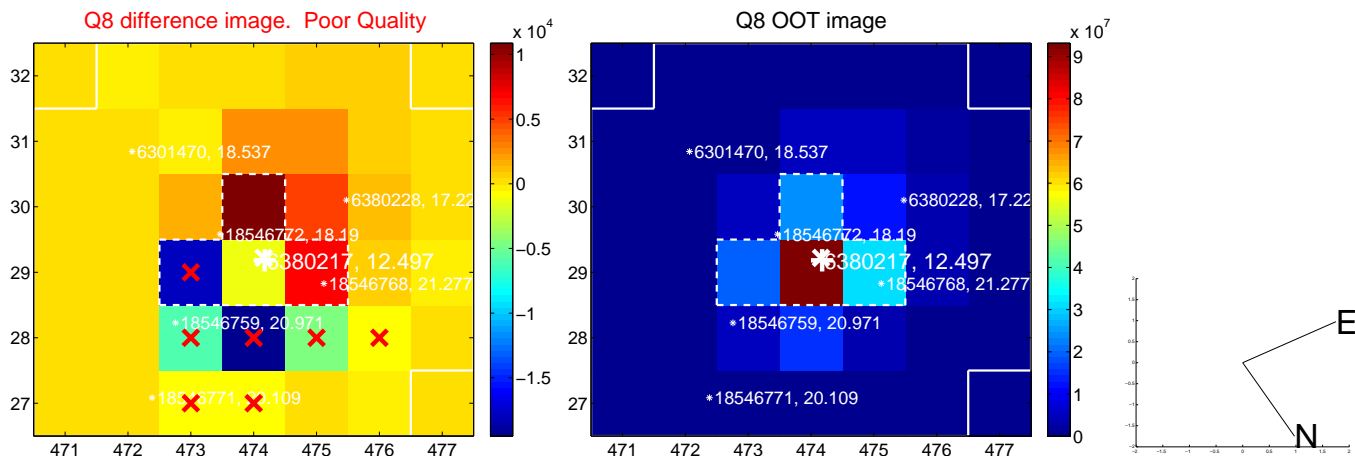
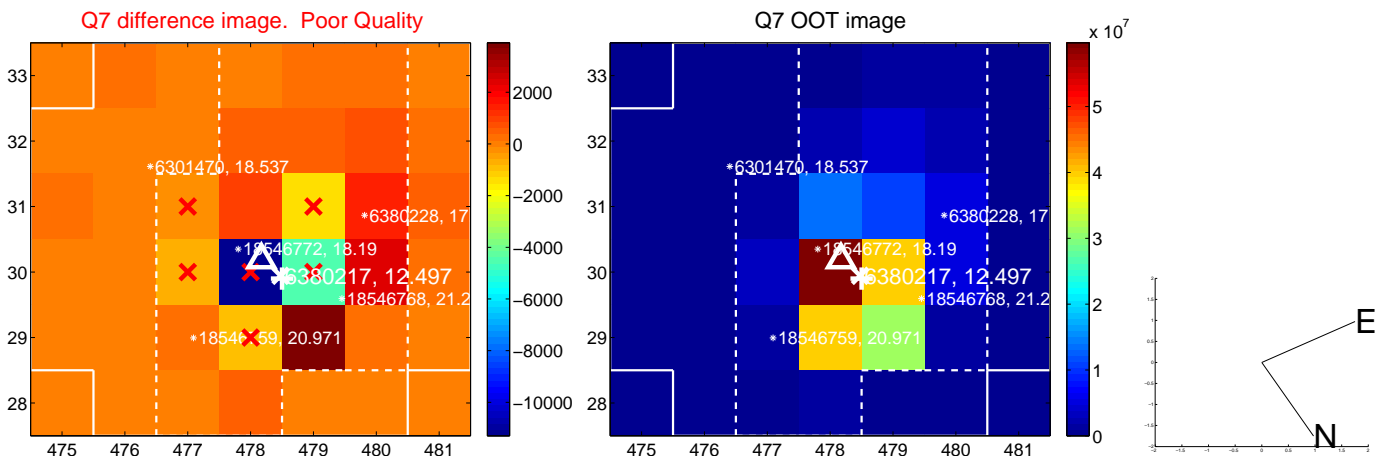
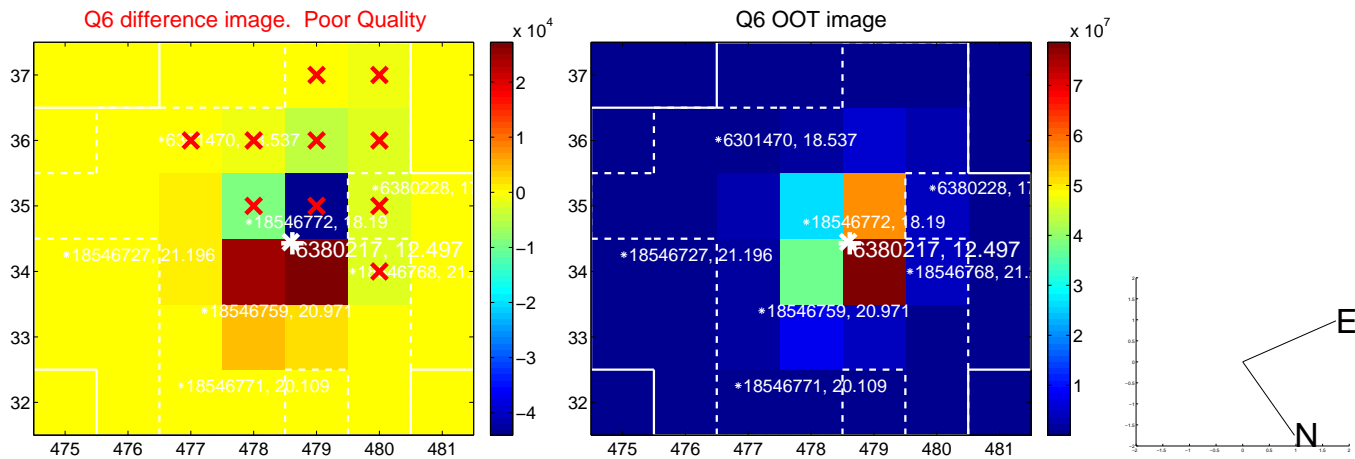
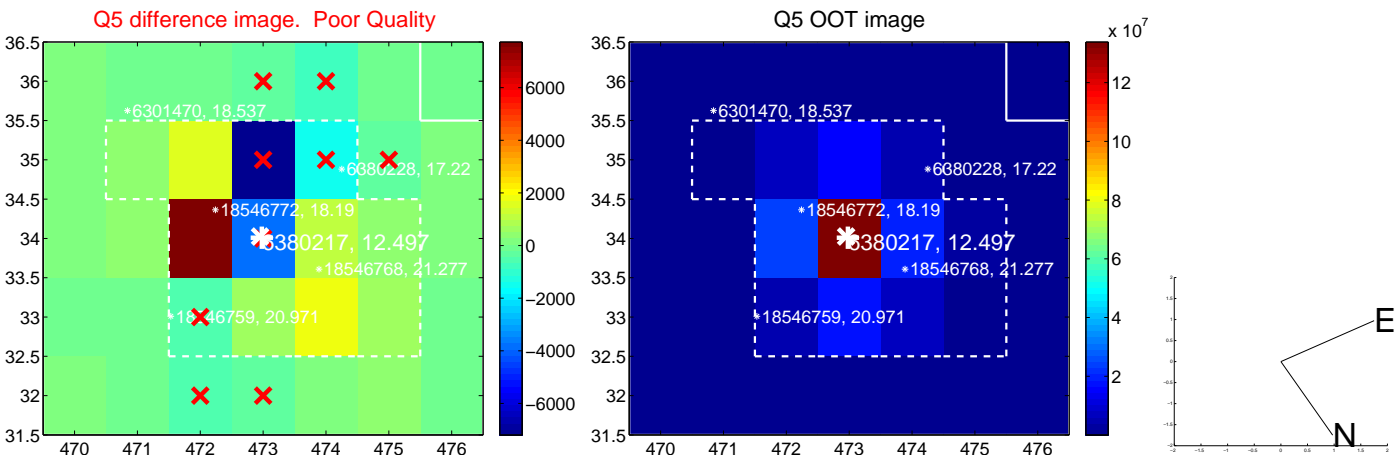


Centroid source offsets from the target star reconstructed from PRF and photometric centroids. Sky blue crosses: good quarterly centroid offsets; Vermillion crosses: bad quarterly centroid offsets; magenta cross: average over quarters. Length of the crosses: one- σ uncertainty. Blue circle: three- σ . Red *: target star. Blue *: Other stars. Text next to a star gives its KIC ID and kepmag. KIC IDs > 15,000,000 are from the UKIRT catalog.

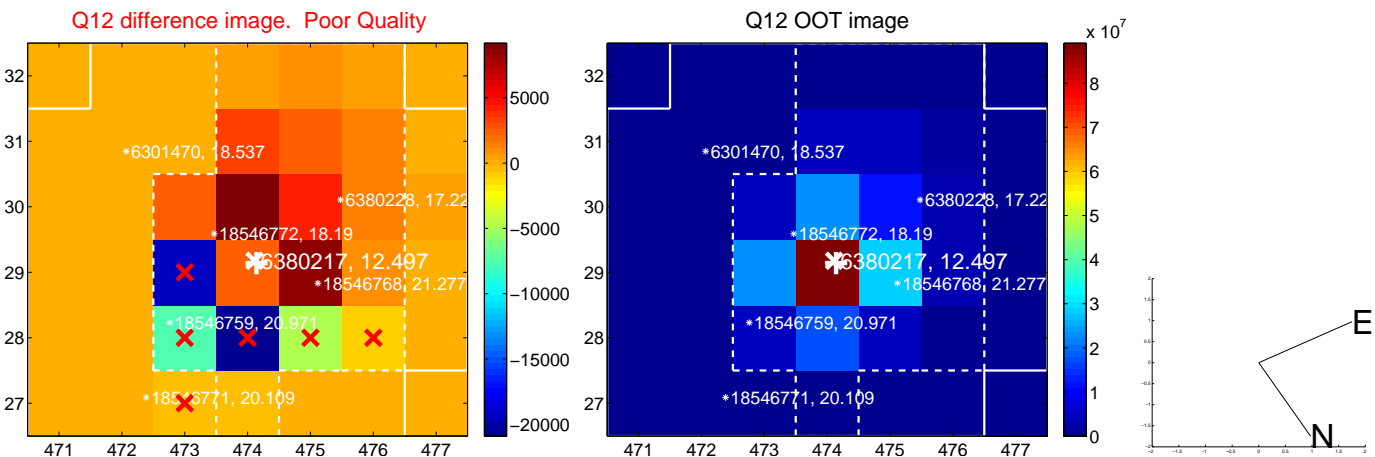
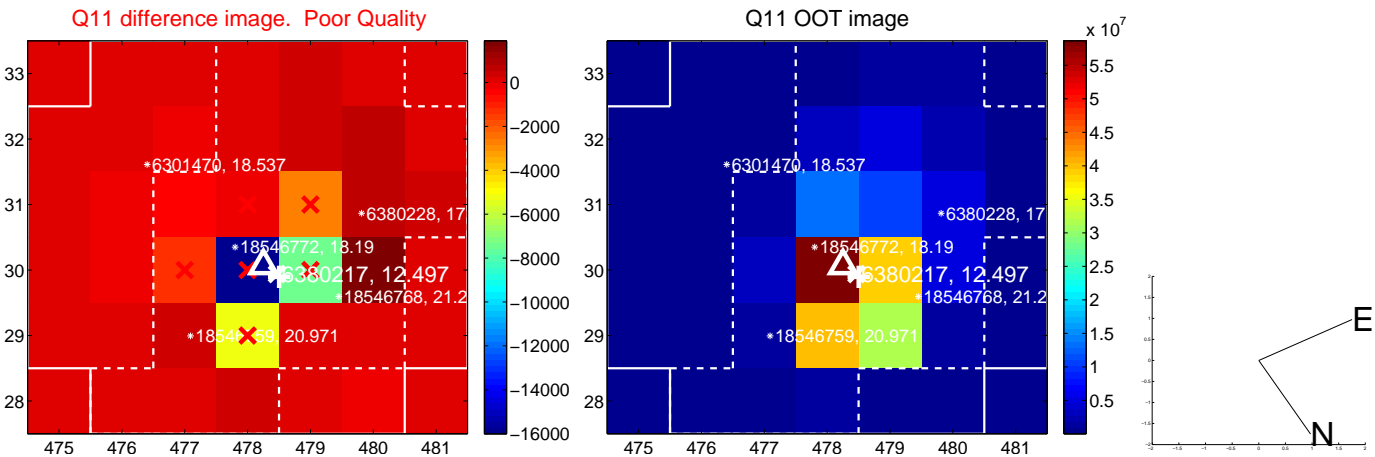
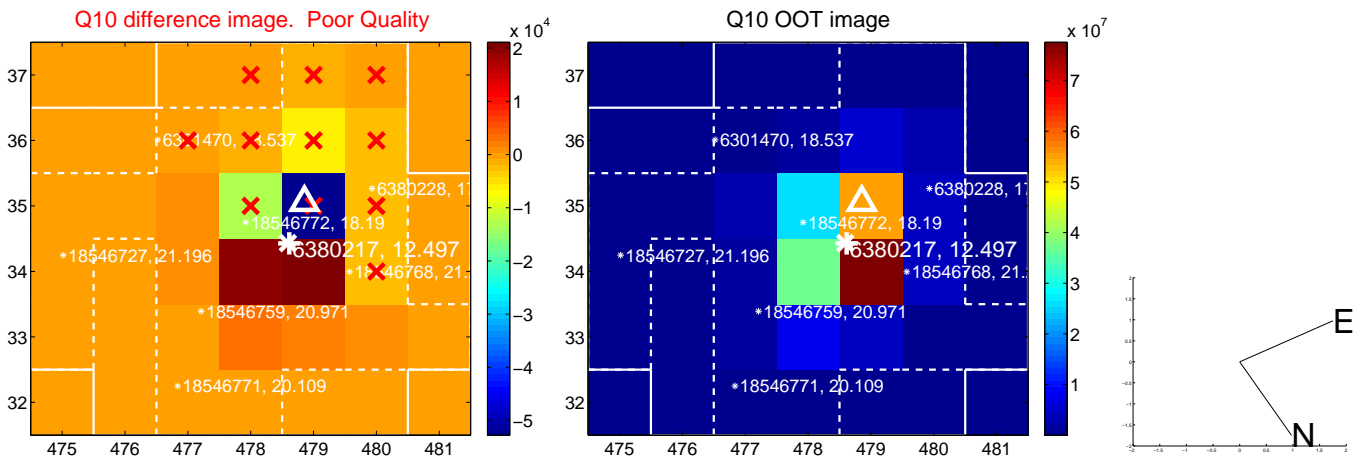
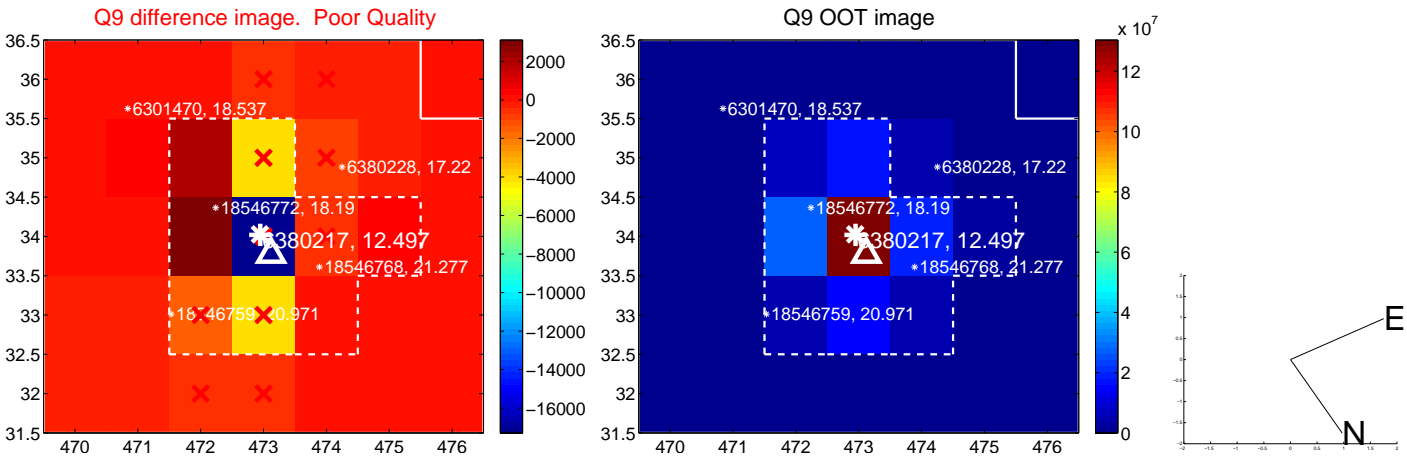
white \times : KIC target position; $+$: OOT centroid; \triangle : difference centroid. red \times : large negative pixel value.



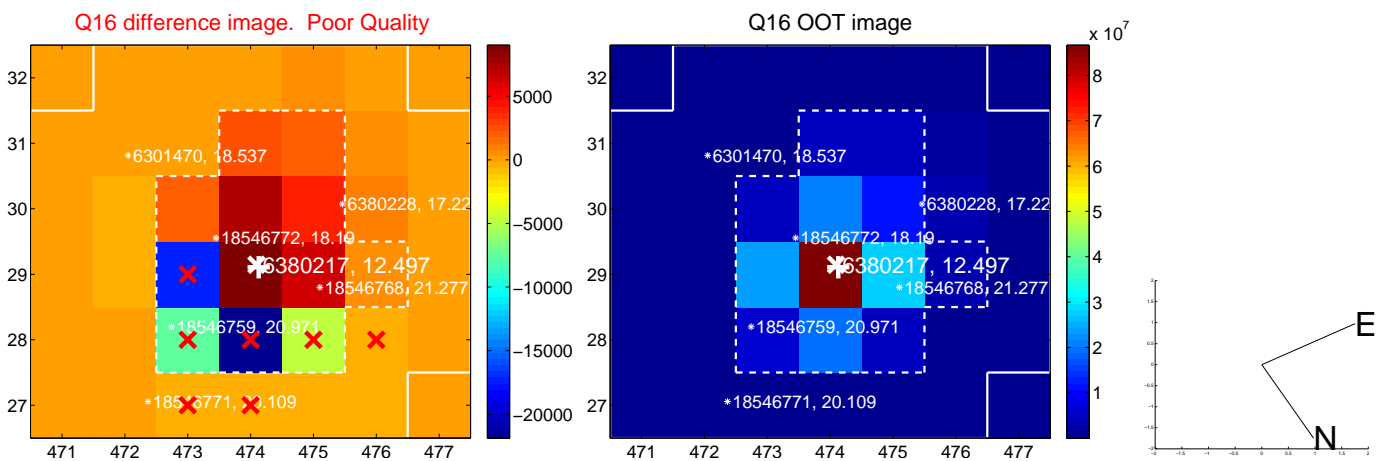
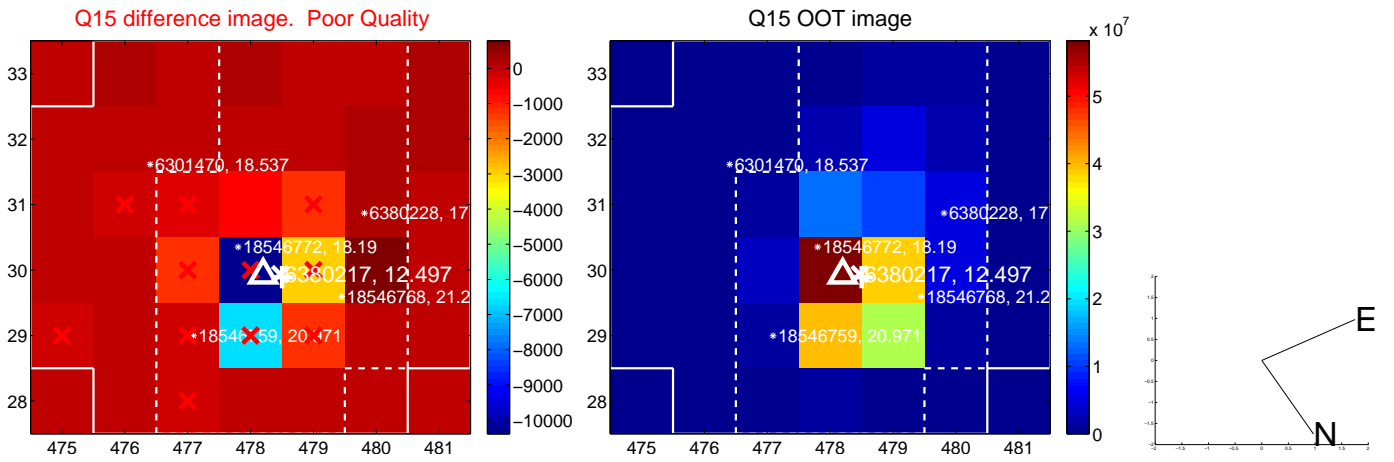
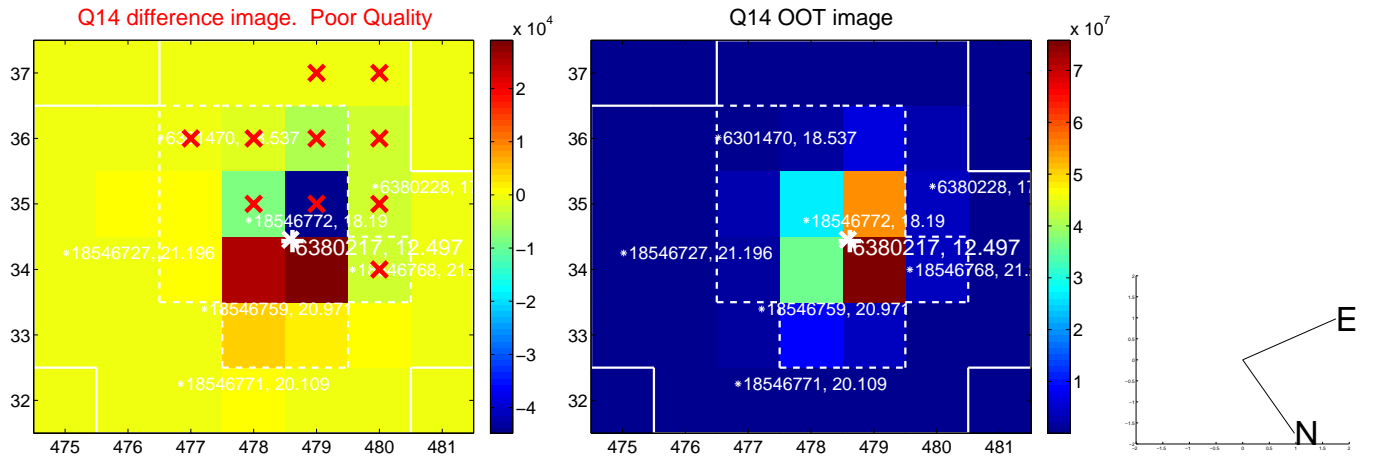
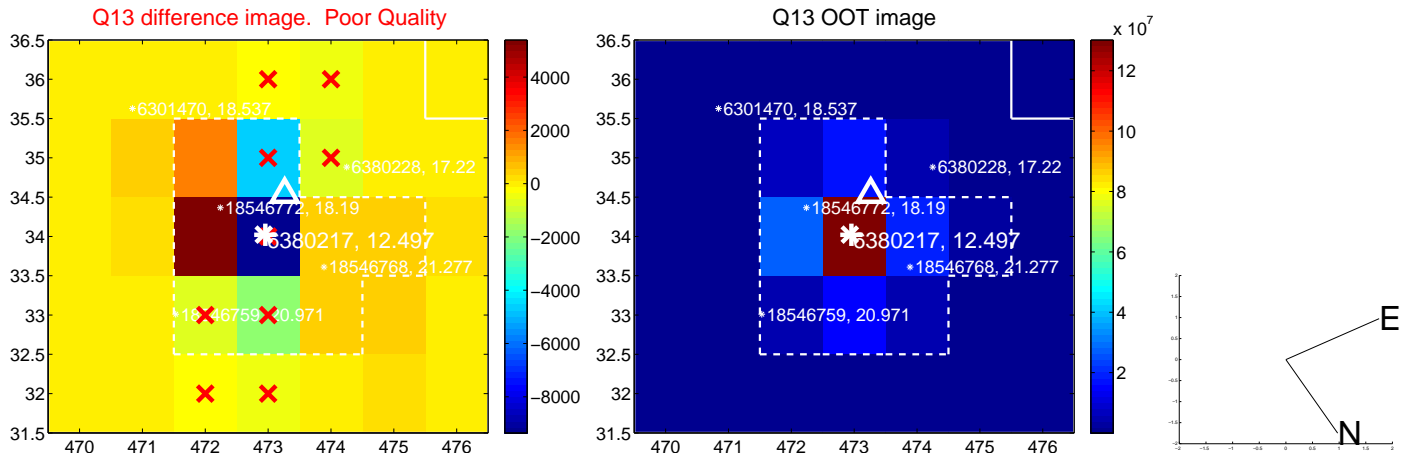
white \times : KIC target position; +: OOT centroid; \triangle : difference centroid. red \times : large negative pixel value.



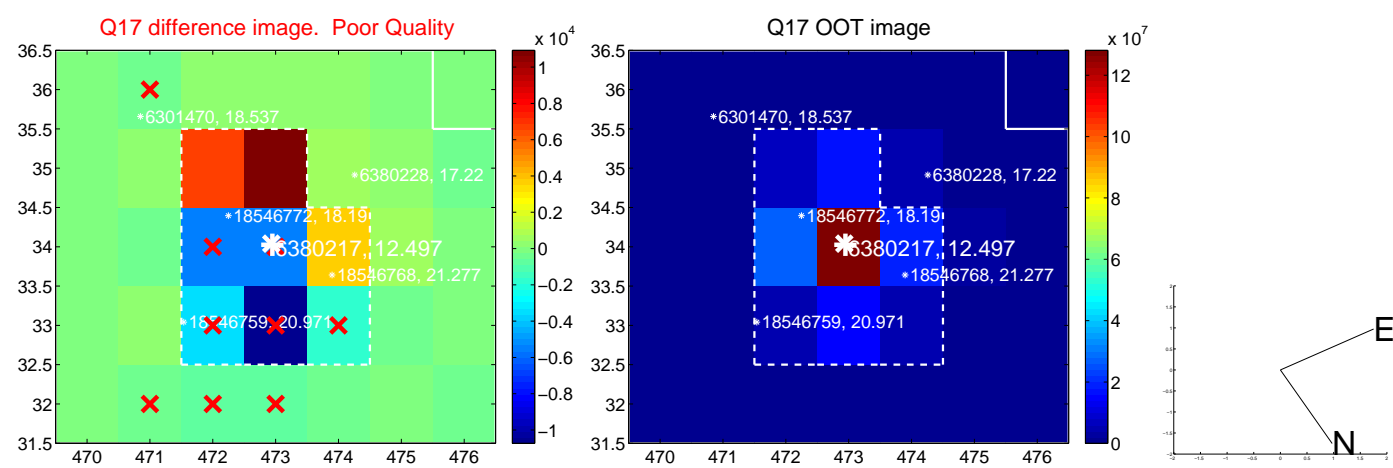
white \times : KIC target position; +: OOT centroid; \triangle : difference centroid. red \times : large negative pixel value.



white \times : KIC target position; $+$: OOT centroid; \triangle : difference centroid. red \times : large negative pixel value.



white \times : KIC target position; $+$: OOT centroid; \triangle : difference centroid. red \times : large negative pixel value.



folded centroid time series figure for this object.

UKIRT Image

Declination

