

KIC 006303436

Q1-17 DR25 TCE Parameters

TCE	Run Type	KOI?	Period (Days)	Epoch (BKJD)	Depth (ppm)	Duration (Hours)	MES	SNR	R_{\star} (R_{\odot})	T_{\star} (K)	R_p (R_{\oplus})	S_p (S_{\oplus})
006303436-01	OBS	No	2.454799	133.039793	45.5	7.239	8.2	7.5	1.15	6466	0.87	1470.80

Robovetter Results

TCE	Run Type	Disp	Score	N	S	C	E	Comments
006303436-01	OBS	FP	0.00	1	0	0	0	LPP_DV—CENT_KIC_POS

Notes: OBS = Observed. INJ = Injected. INV = Inverted. SCR = Scrambled.

N = Not Transit-Like. S = Stellar Eclipse. C = Centroid Offset. E = Ephemeris Match.

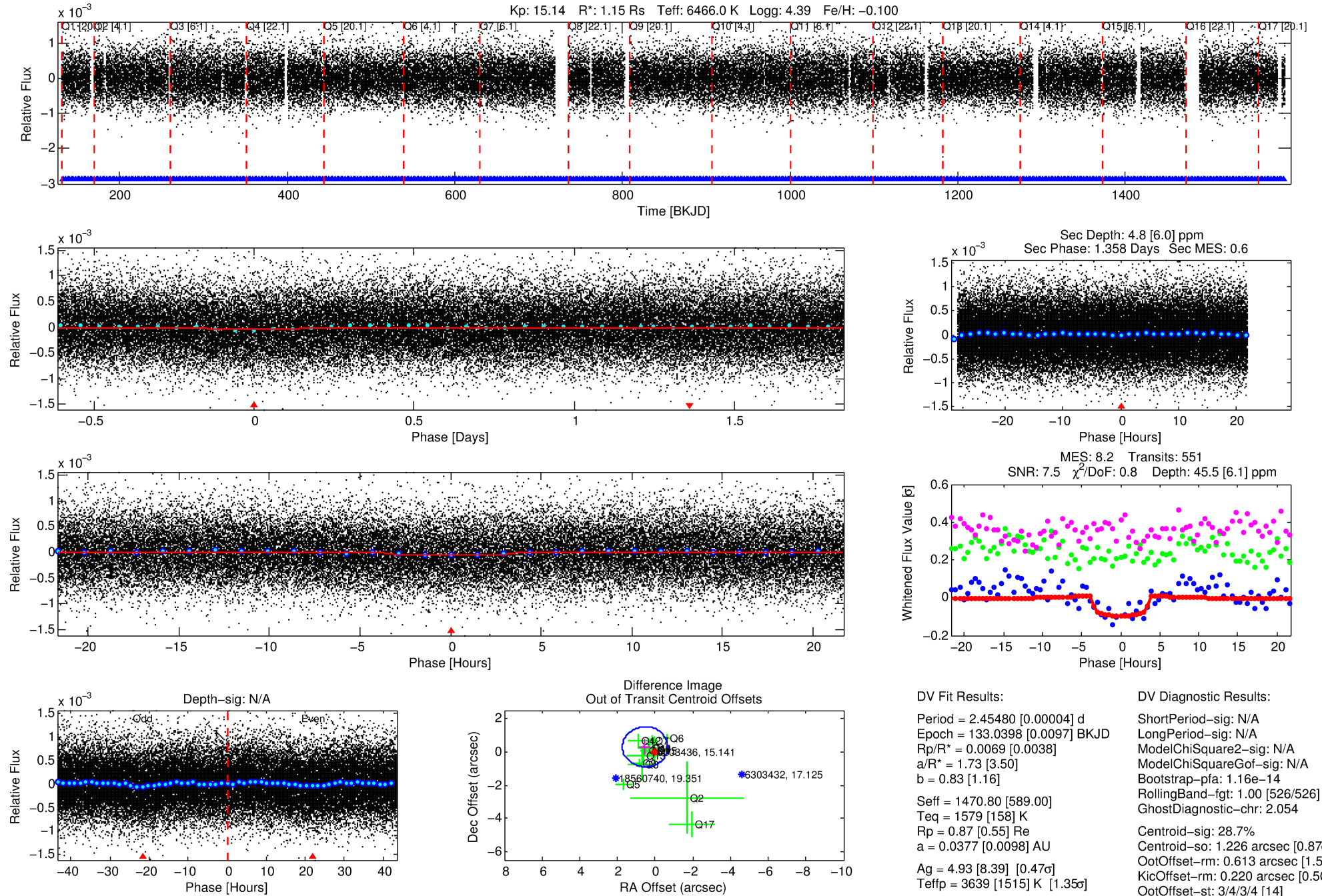
See http://exoplanetarchive.ipac.caltech.edu/docs/API_kepcandidate_columns.html#proj_disp_col for comment definitions.

Ephemeris Match Information For 006303436-01

No Significant Match Found

DV One-Page Summary

KIC: 6303436 Candidate: 1 of 1 Period: 2.455 d



DV Fit Results:

Period = 2.45480 [0.00004] d
Epoch = 133.0398 [0.0097] BKJD
Rp/R* = 0.0069 [0.0038]
a/R* = 1.73 [3.50]
b = 0.83 [1.16]
Seff = 1470.80 [589.00]
Teff = 1579 [158] K
Rp = 0.87 [0.55] Re
a = 0.0377 [0.0098] AU
Ag = 4.93 [8.39] [0.47] σ
Teffp = 3639 [1515] K [1.35] σ

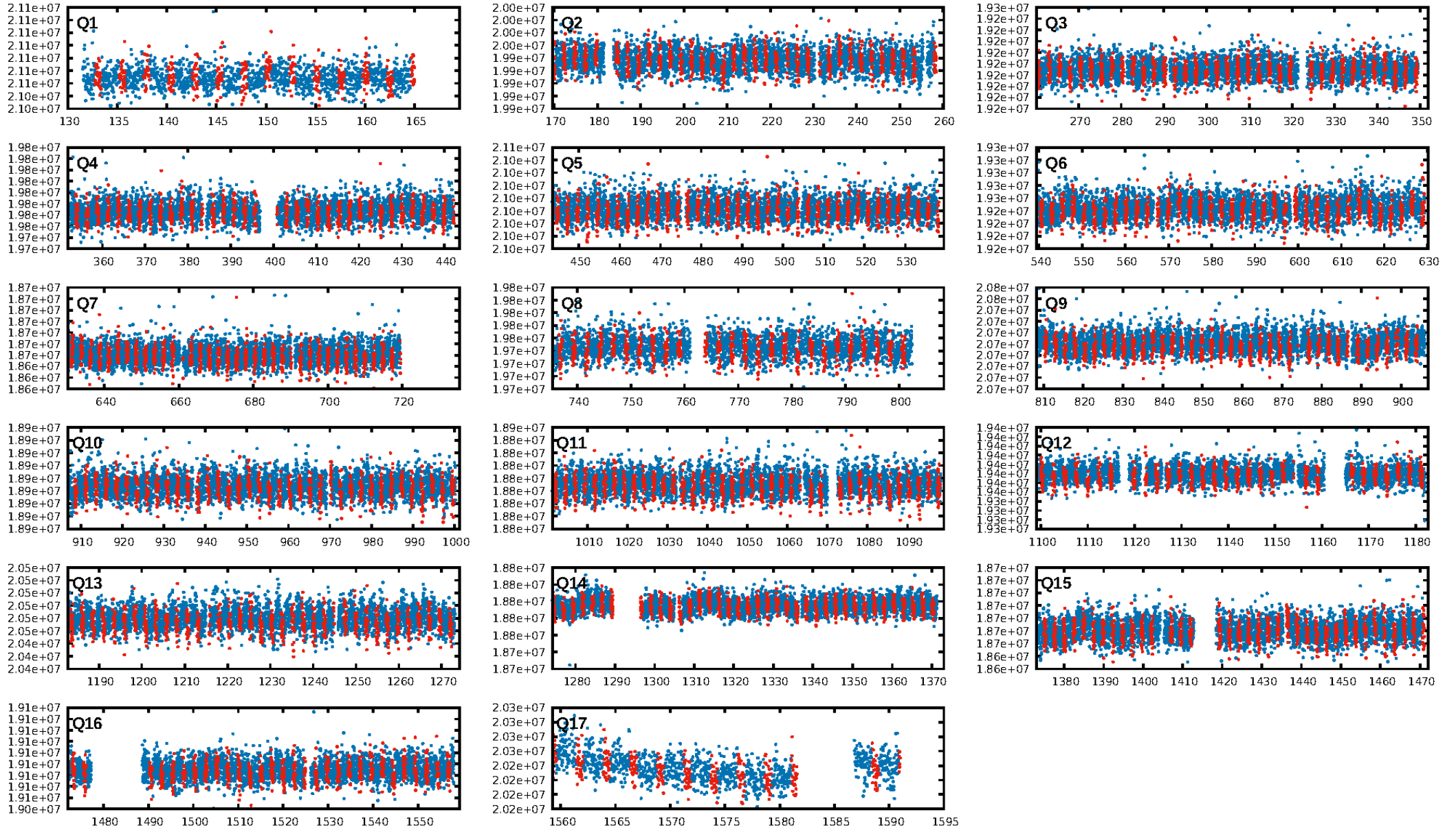
DV Diagnostic Results:

ShortPeriod-sig: N/A
LongPeriod-sig: N/A
ModelChiSquare2-sig: N/A
ModelChiSquareGof-sig: N/A
Bootstrap-pfa: 1.16e-14
RollingBand-fgt: 1.00 [526/526]
GhostDiagnostic-chr: 2.054
Centroid-sig: 28.7%
Centroid-so: 1.226 arcsec [0.87] σ
OotOffset-rm: 0.613 arcsec [1.53] σ
KicOffset-rm: 0.220 arcsec [0.50] σ
OotOffset-st: 3/4/3/4 [14]
KicOffset-st: 3/4/3/4 [14]
DiffImageQuality-fgm: 0.86 [12/14]
DiffImageOverlap-fno: 1.00 [17/17]

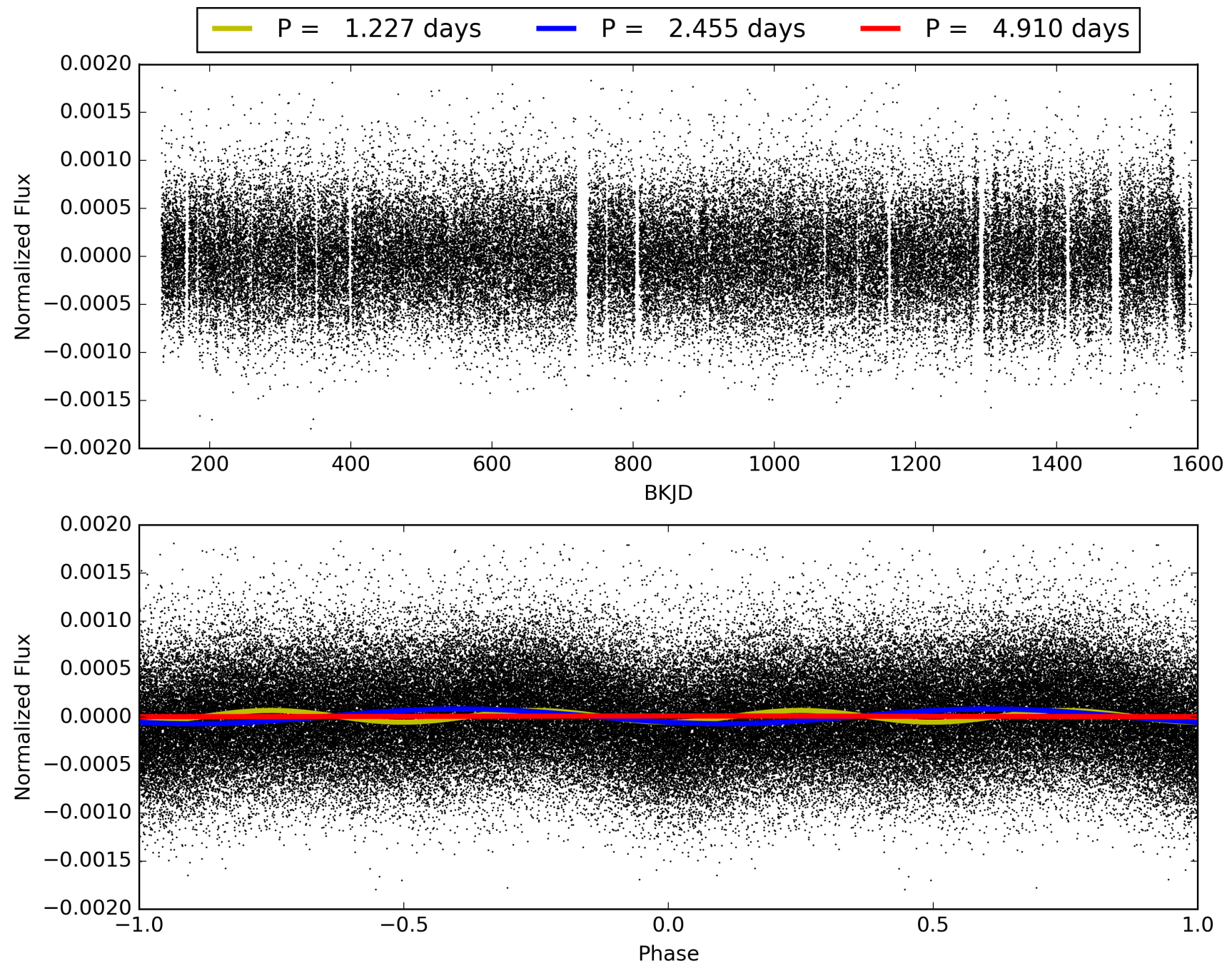
Software Revision: svn+ssh://murzim/repo/soc/tags/release/9.3.42@60958 -- Date Generated: 30-Jan-2016 13:01:18 Z

This Data Validation Report Summary was produced in the Kepler Science Operations Center Pipeline at NASA Ames Research Center

TCE 006303436-01, PDC Light Curves

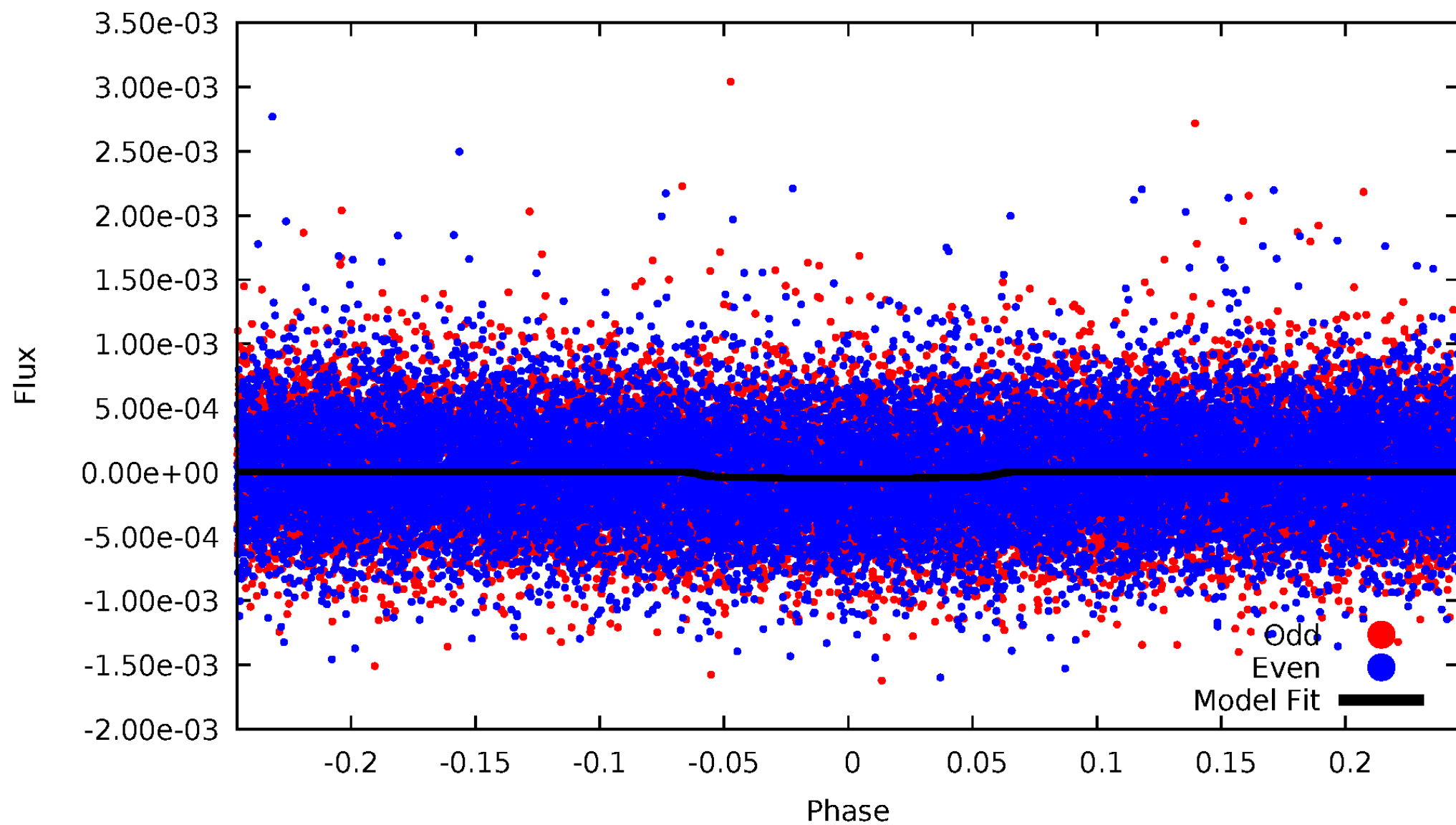


TCE 006303436-01



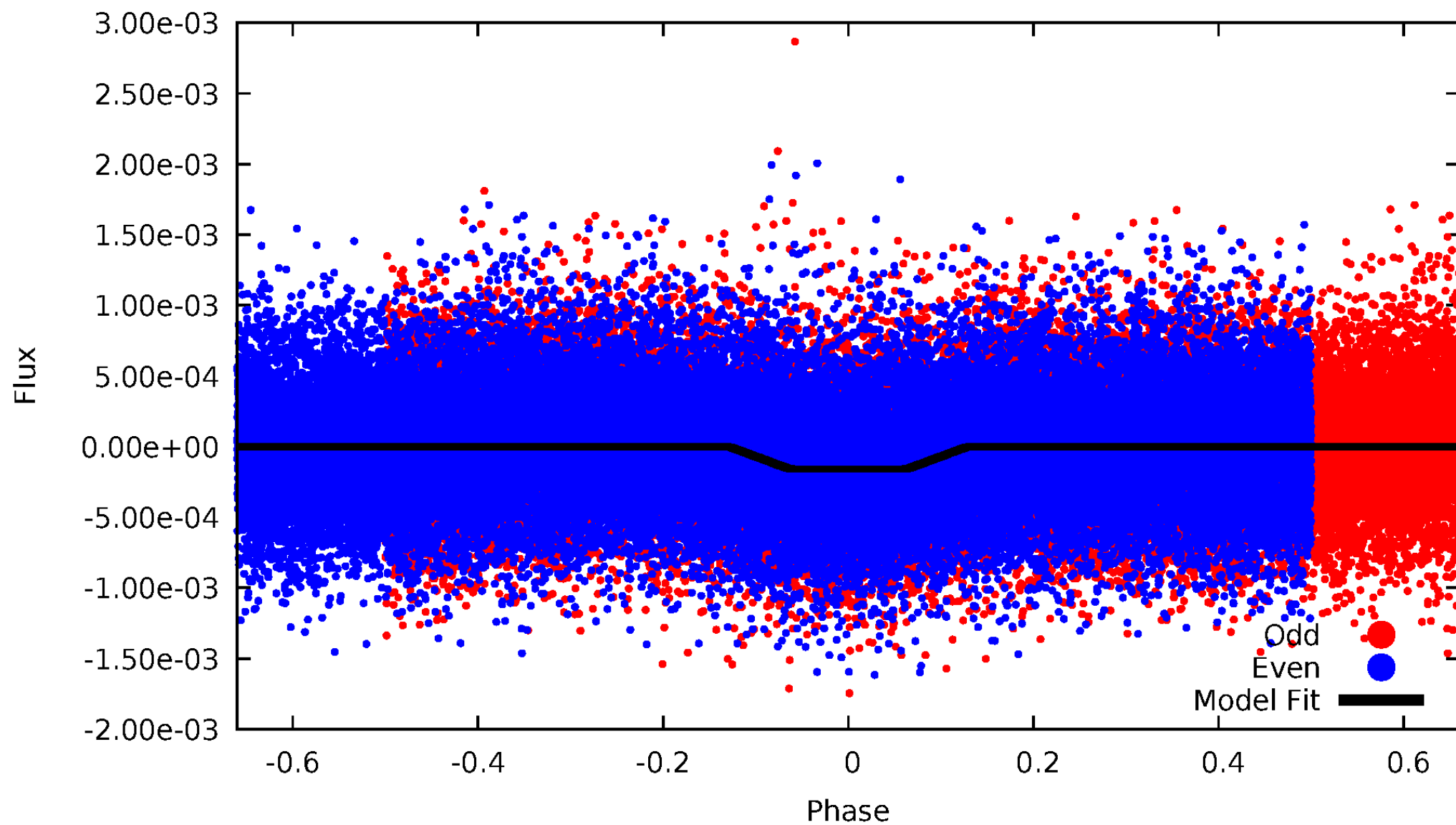
DV Odd/Even

TCE 006303436-01

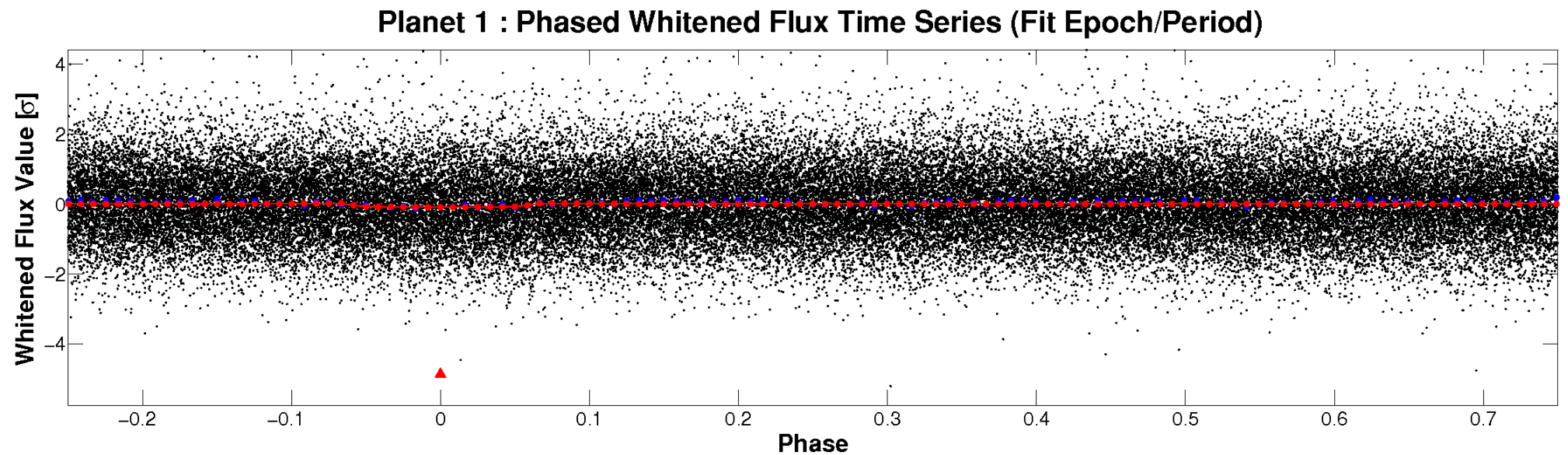
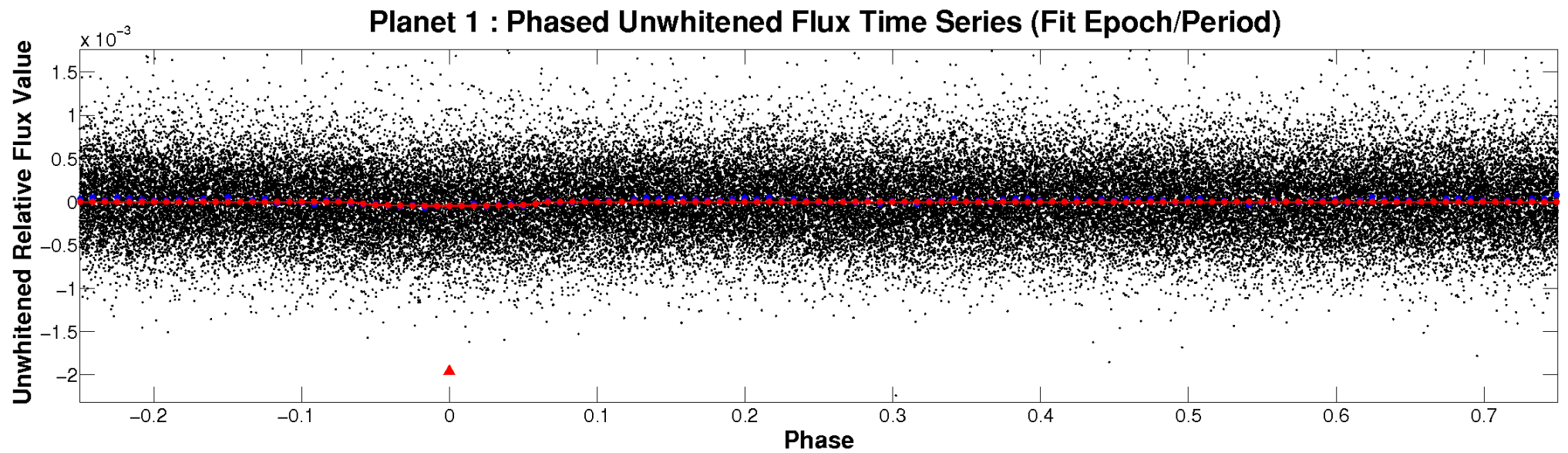


ALT Odd/Even

TCE 006303436-01

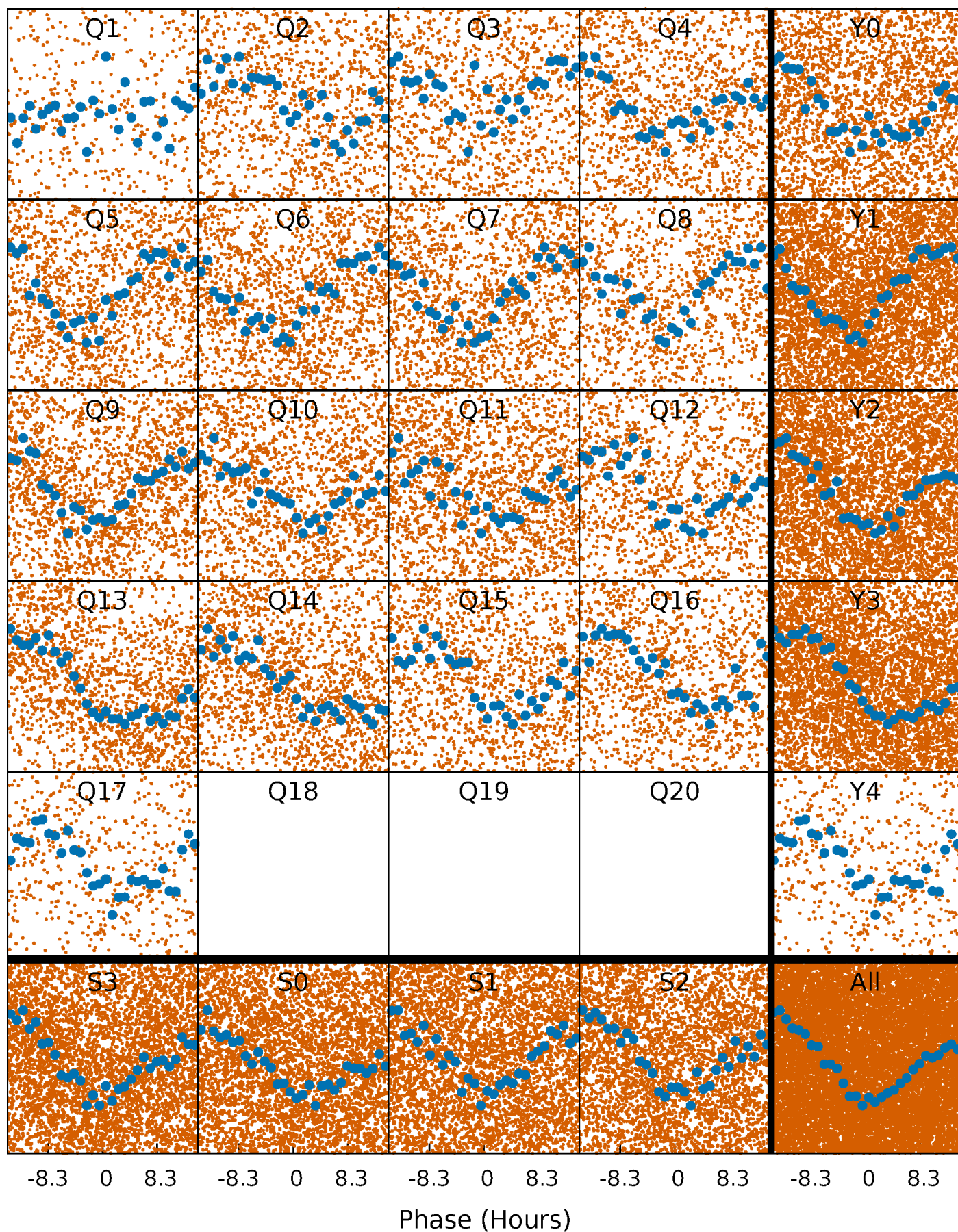


Non-Whitened Vs. Whitened Light Curve



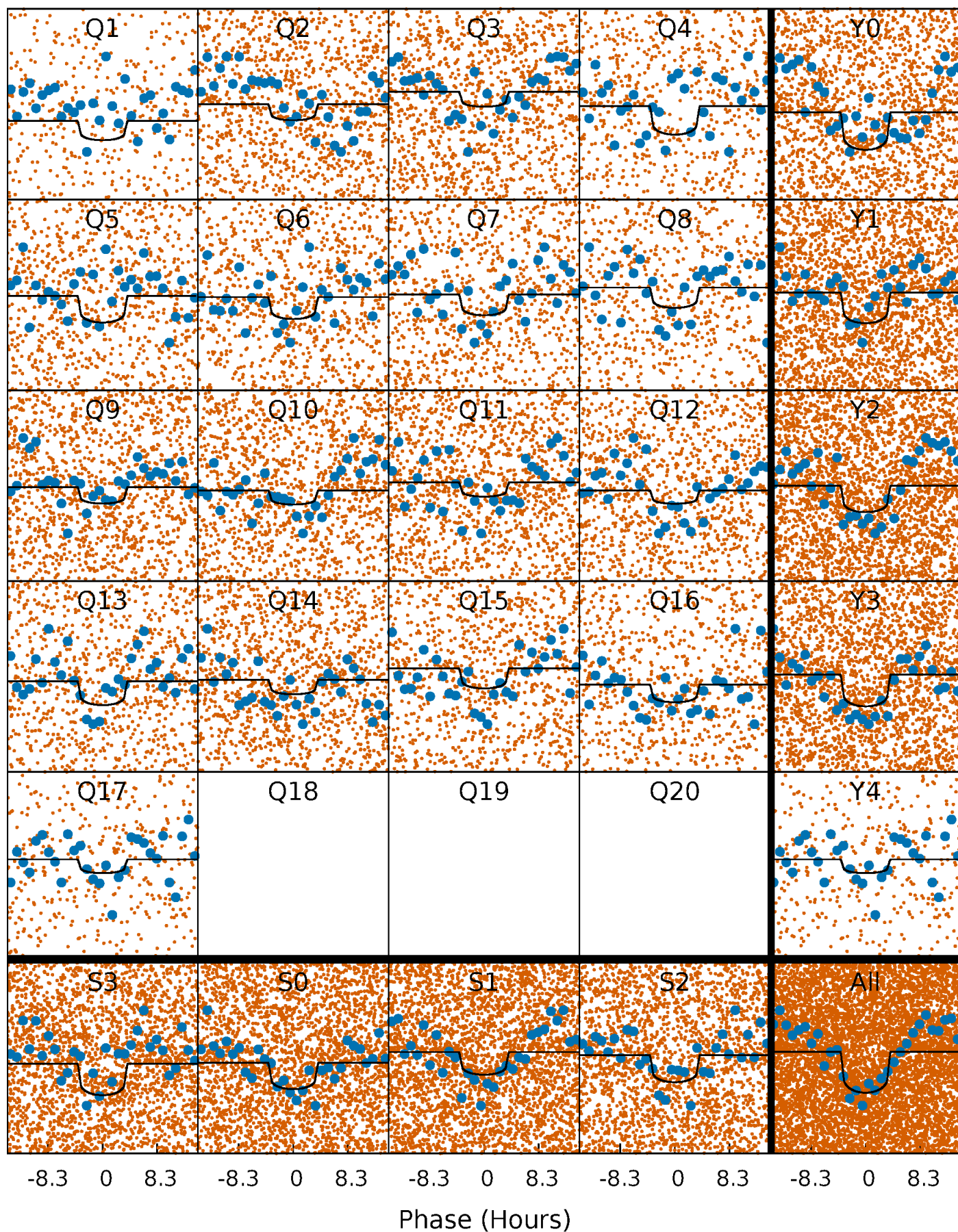
PDC Quarter-Phased Transit Curves

TCE 006303436-01 P= 2.454799 Days $T_0=133.039794$ (BKJD)



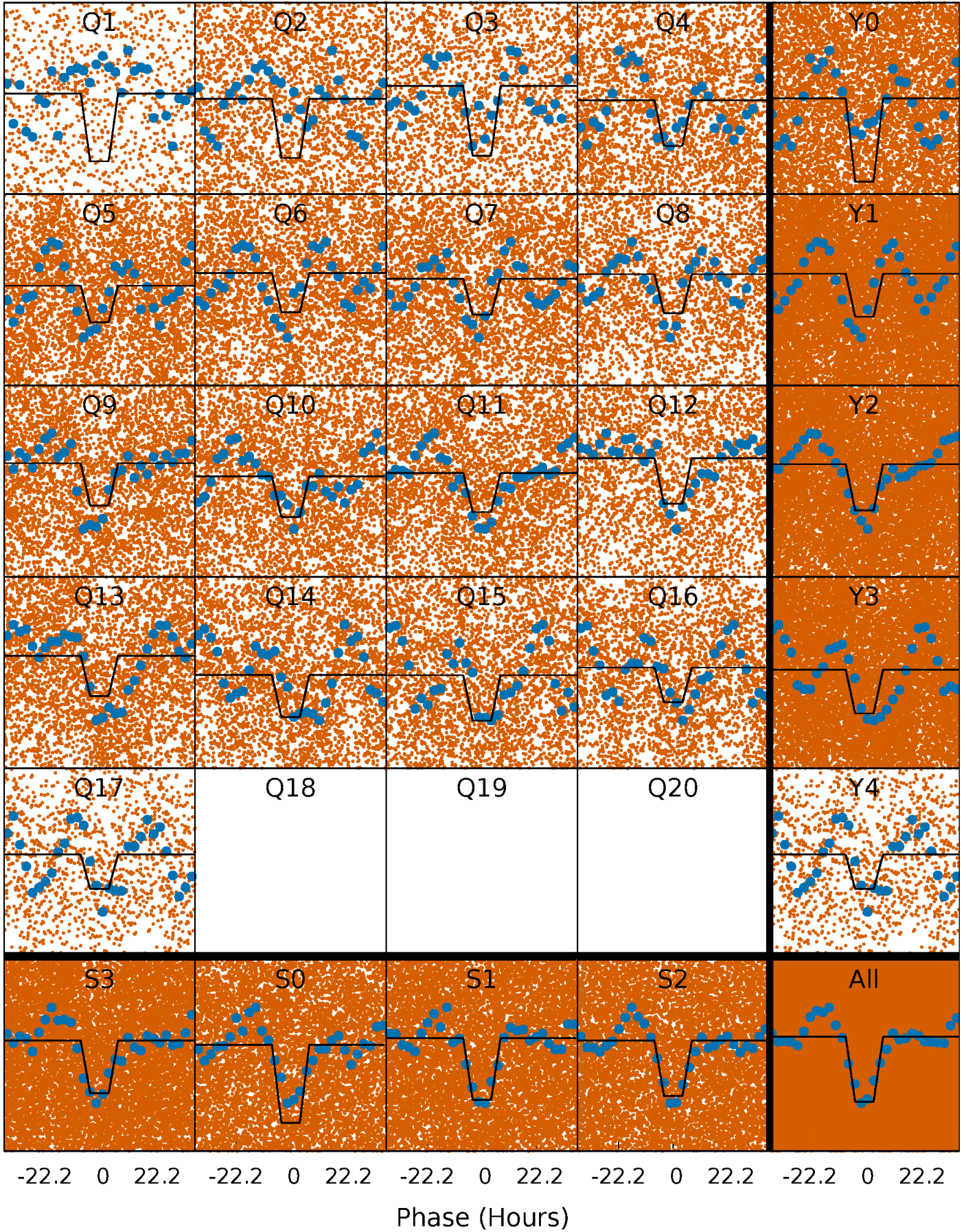
DV Quarter-Phased Transit Curves

TCE 006303436-01 P= 2.454799 Days $T_0=133.039794$ (BKJD)



Alt. Detrend Quarter-Phased Transit Curves

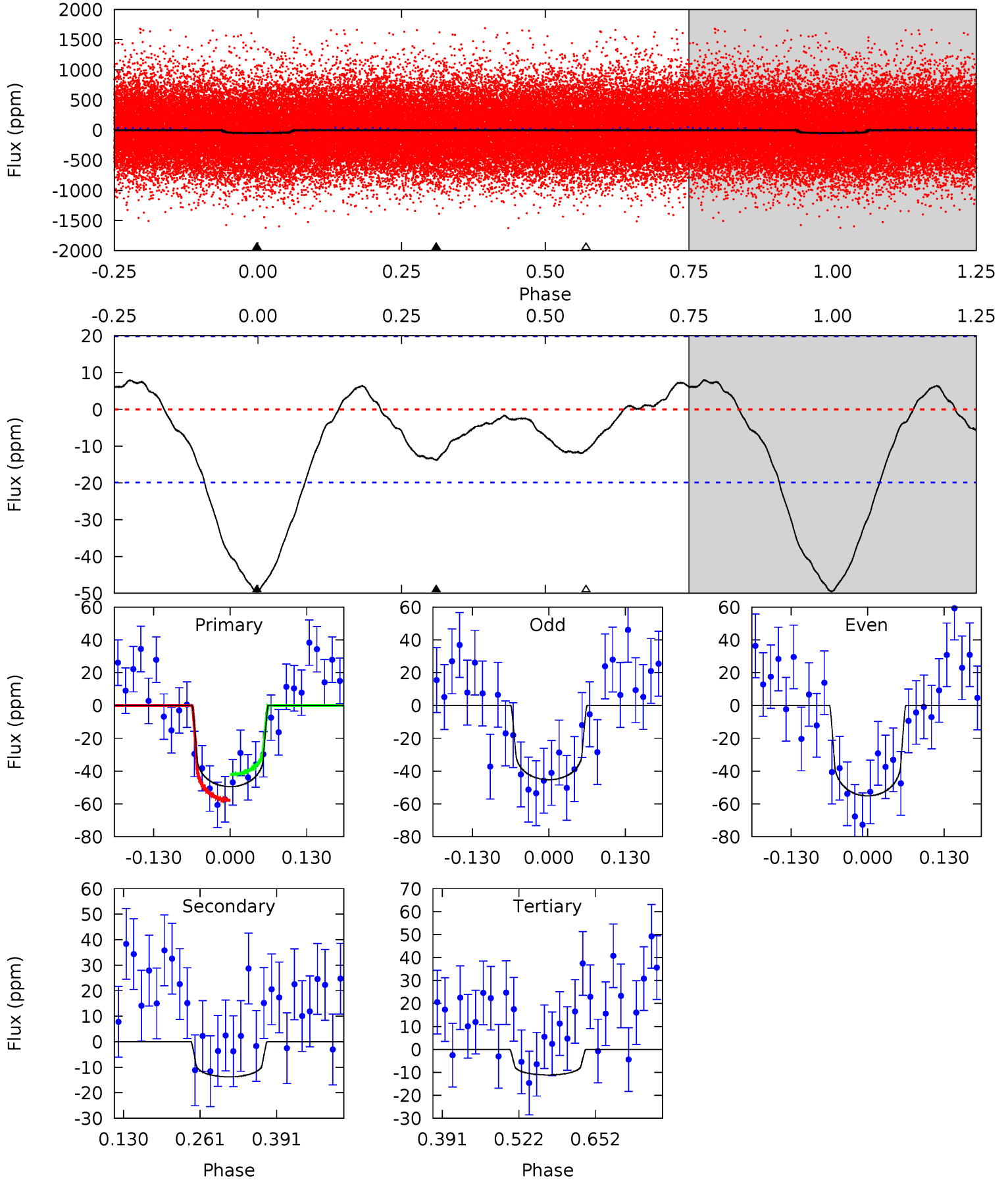
TCE 006303436-01 P= 2.454825 Days $T_0=133.059282$ (BKJD)



DV Model-Shift Uniqueness Test

006303436-01, P = 2.454799 Days, E = 130.584995 Days

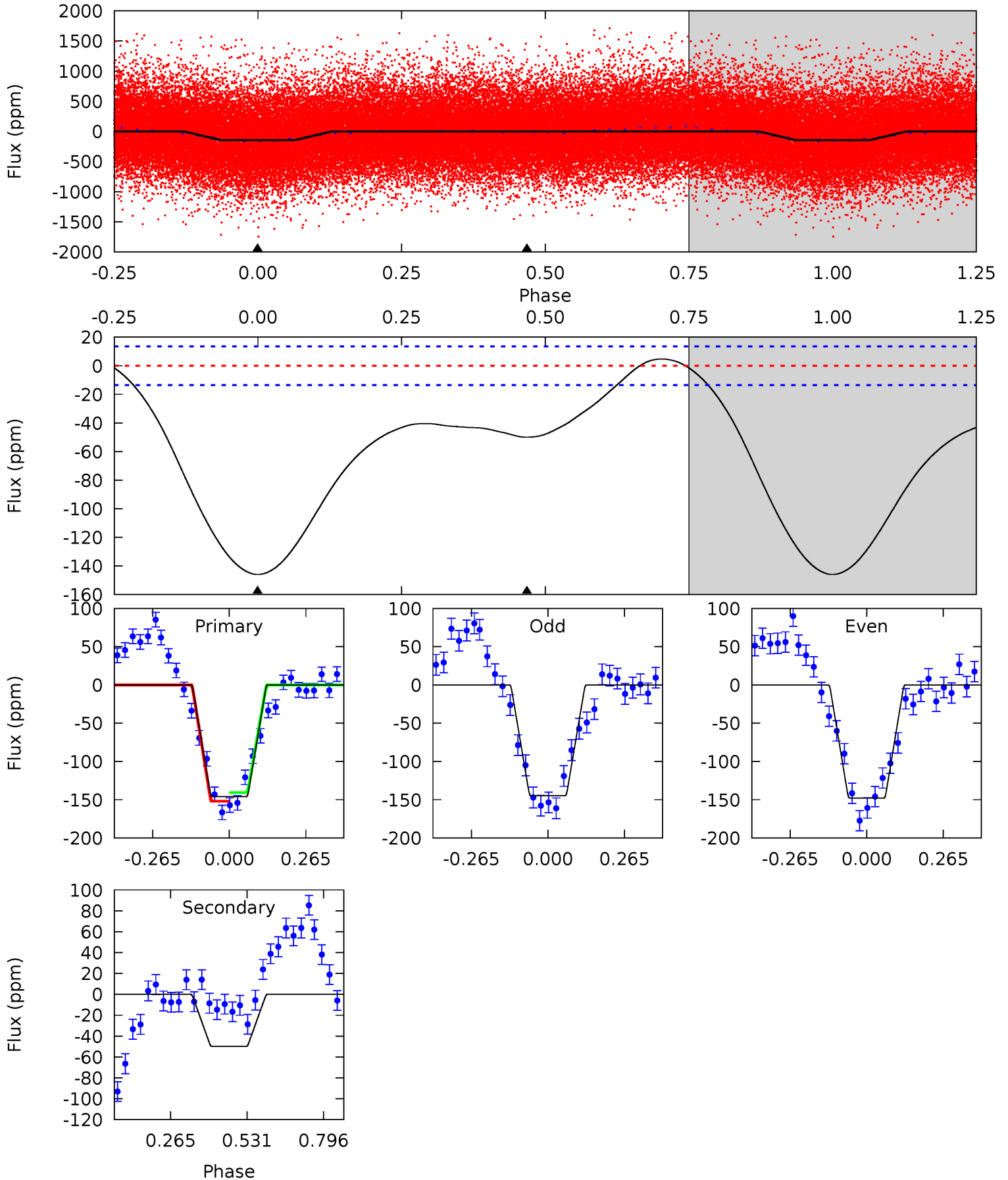
Pri	Sec	Ter	Pos	FA ₁	FA ₂	F _{Red}	Pri-Ter	Pri-Pos	Sec-Ter	Sec-Pos	Odd-Evn	DMM	Shape	TAT
11.2	3.12	2.53	0	4.51	1.51	1.38	8.70	11.2	0.60	3.12	1.12	1.02	0.14	1.78



Alt Model-Shift Uniqueness Test

006303436-01, P = 2.454825 Days, E = 130.604457 Days

Pri	Sec	Ter	Pos	FA ₁	FA ₂	F _{Red}	Pri-Ter	Pri-Pos	Sec-Ter	Sec-Pos	Odd-Evn	DMM	Shape	TAT
47.0	16.1	0	0	4.36	1.11	6.07	47.0	47.0	16.1	16.1	0.50	1.06	0.03	1.83



Stellar Parameters For KIC 006303436

	$T_{\text{eff}}(K)$	$\log(g)$	[Fe/H]	$R (R_{\odot})$	$M(M_{\odot})$	$p_{\star} (\text{g}\cdot\text{cm}^{-3})$
	6466^{+173}_{-230}	$4.386^{+0.067}_{-0.202}$	$-0.100^{+0.250}_{-0.300}$	$1.154^{+0.363}_{-0.156}$	$1.180^{+0.169}_{-0.169}$	$1.083^{+0.379}_{-0.542}$
	+3%/-4%	+2%/-5%	+250%/-300%	+31%/-14%	+14%/-14%	+35%/-50%
Source	PHO1	KIC0	KIC0	DSEP		

KIC = Kepler Input Catalog; PHO = Photometry; SPE = Spectroscopy; AST = Asteroseismology
 TRA = Transits; DESP = Dartmouth Models; MULT = Multiple Models

Secondary Eclipse Parameters for KIC 006303436-01 / KOI

Detrend	Depth (ppm)	$R_p (R_{\oplus})$	$T_{\text{max}} (K)$	$T_{\text{obs}} (K)$	A_{obs}
DV	-14 ± 4	$0.94^{+0.52}_{-0.44}$	2245^{+171}_{-112}	4690^{+1666}_{-773}	12^{+29}_{-7}
Alt.	-50 ± 3	$1.68^{+0.57}_{-0.52}$	2244^{+188}_{-121}	4905^{+826}_{-549}	14^{+15}_{-6}

T_{max} = Theoretical Maximum Planetary Temperature

T_{obs} = Observed Planetary Temperature (Assuming $A=0.3$)

A_{obs} = Observed Albedo (Assuming $T=0$)

If a secondary eclipse is present, the system is likely an EB if $T_{\text{obs}} \gg T_{\text{max}}$ AND $A_{\text{obs}} \gg 1.0$

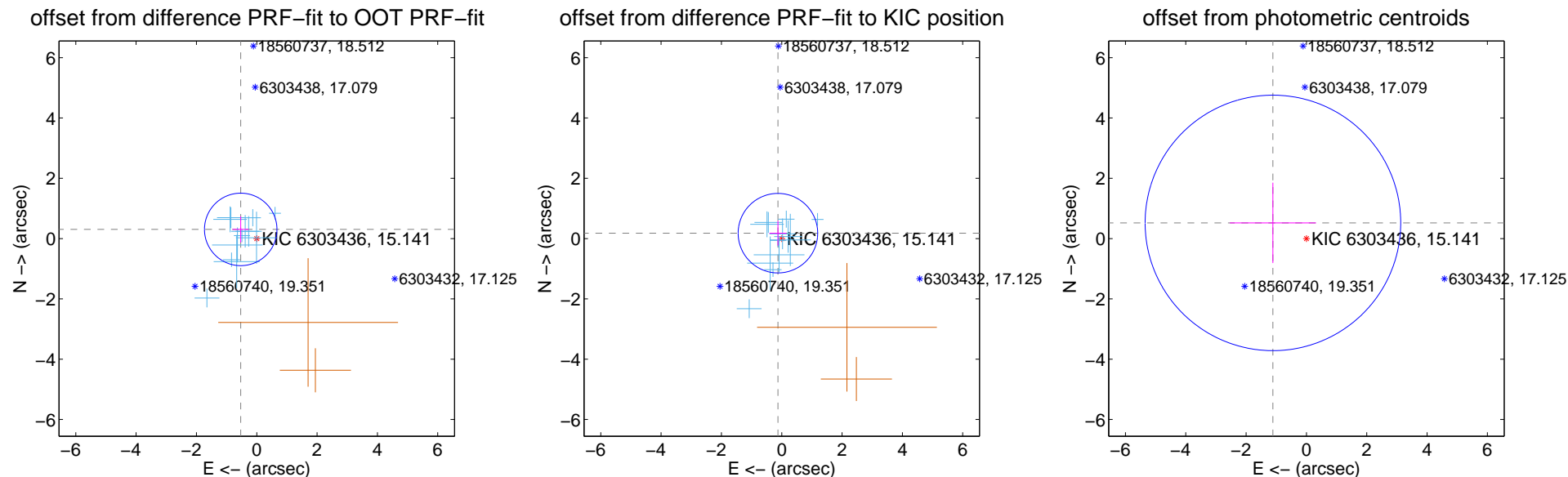
DV Centroid Data

Supplemental centroid analysis for 006303436-01. Kepler magnitude: 15.14. Transit SNR 7.46

There are 12 quarters with good PRF difference image offsets

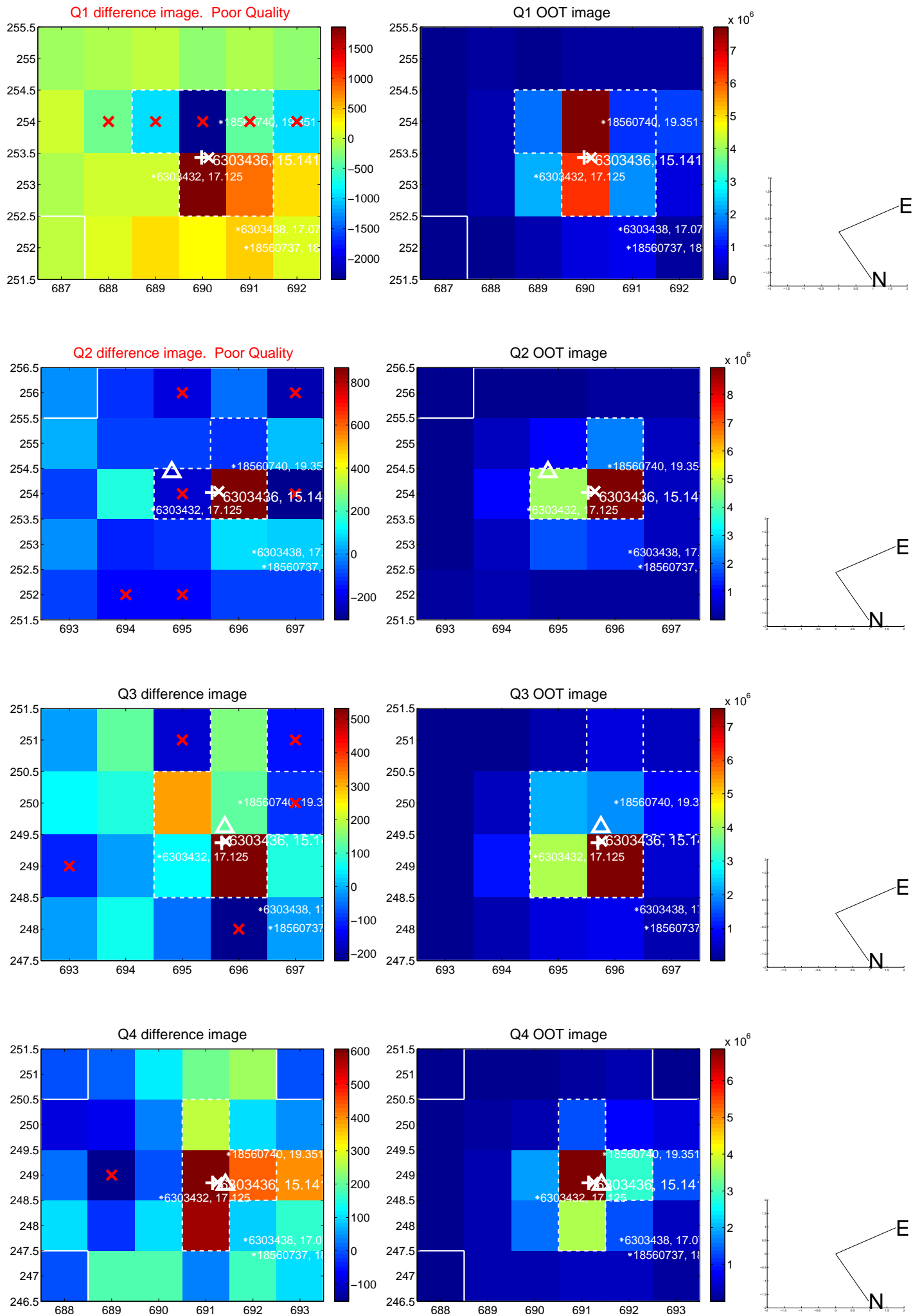
The direct PRF centroid is offset from the target star catalog position by about 0.61 arcsec

	Distance in arcsec	Distance / σ	Δ RA	Δ Dec
PRF-fit source offset from OOT	0.613 ± 0.401	1.53	0.532 ± 0.269	0.304 ± 0.432
PRF-fit source offset from KIC position	0.220 ± 0.440	0.50	0.127 ± 0.280	0.180 ± 0.411
photometric centroid source offset	1.23 ± 1.41	0.87	1.11 ± 1.43	0.52 ± 1.33

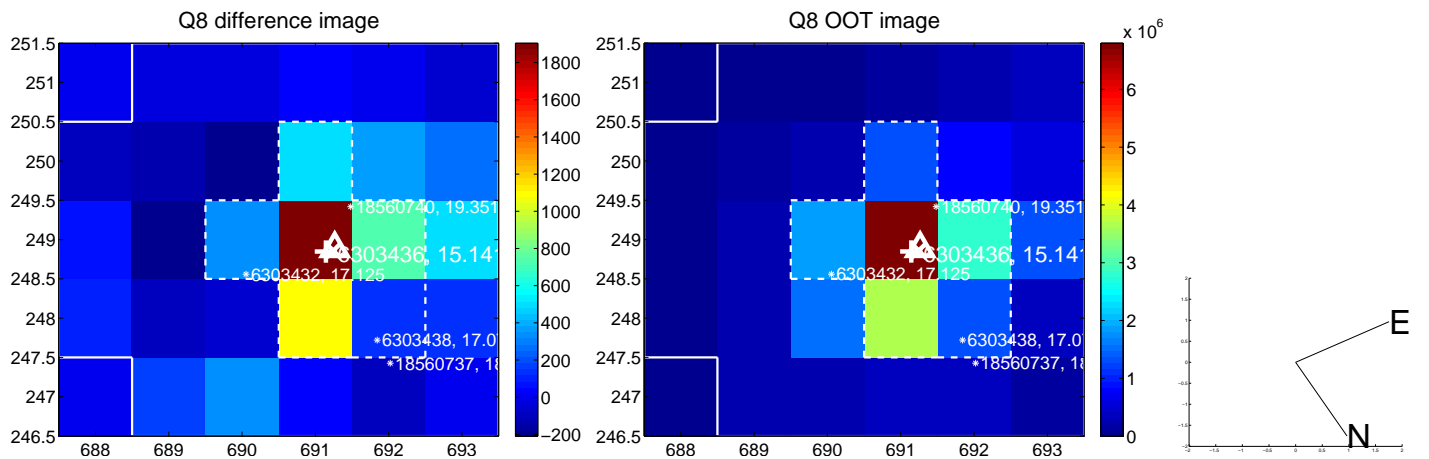
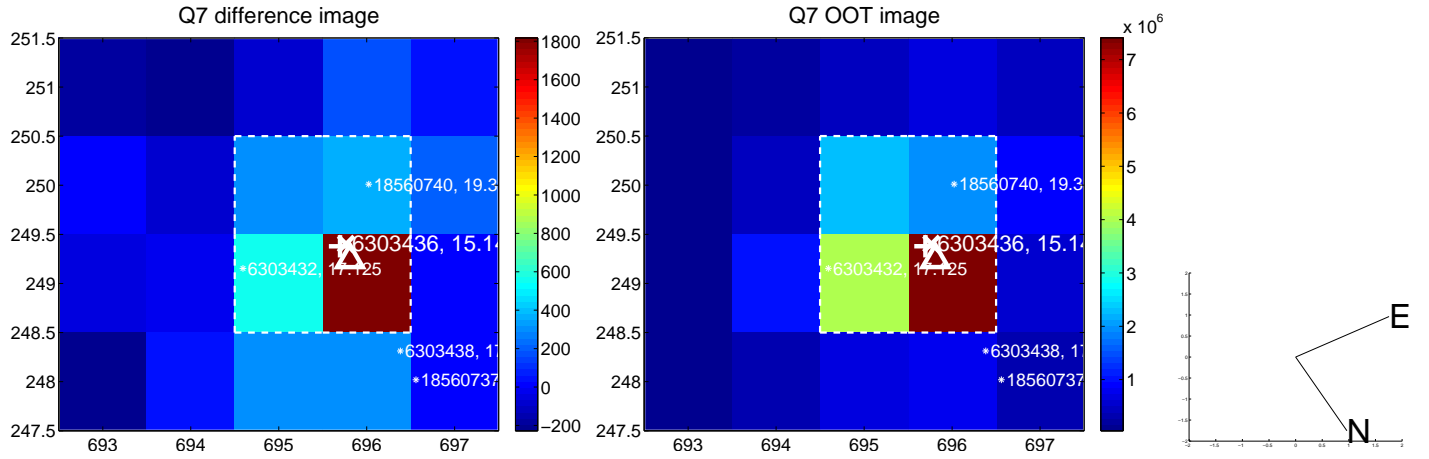
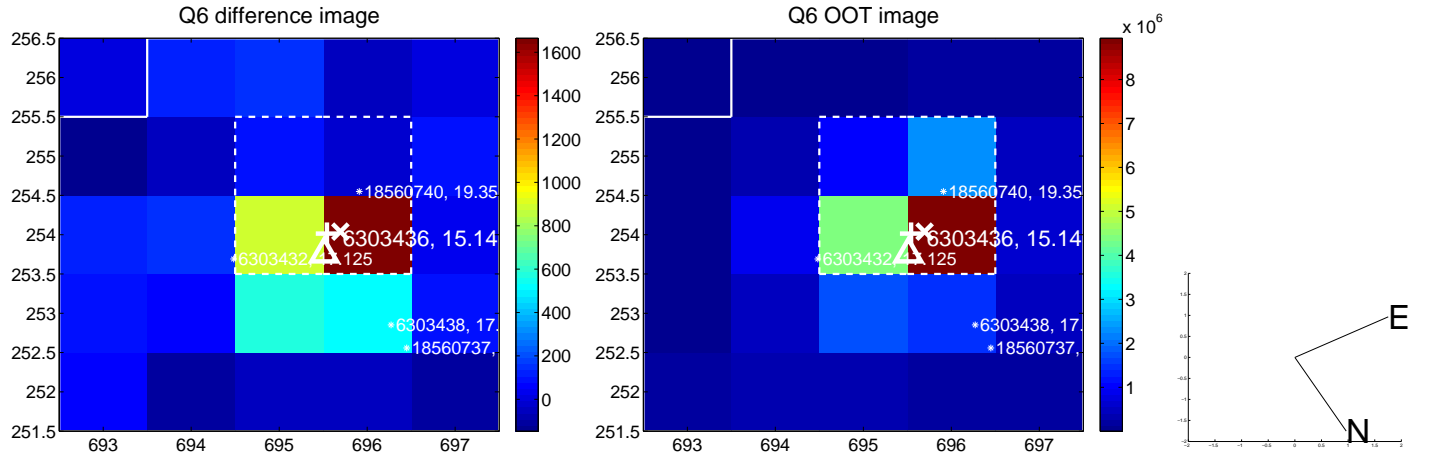
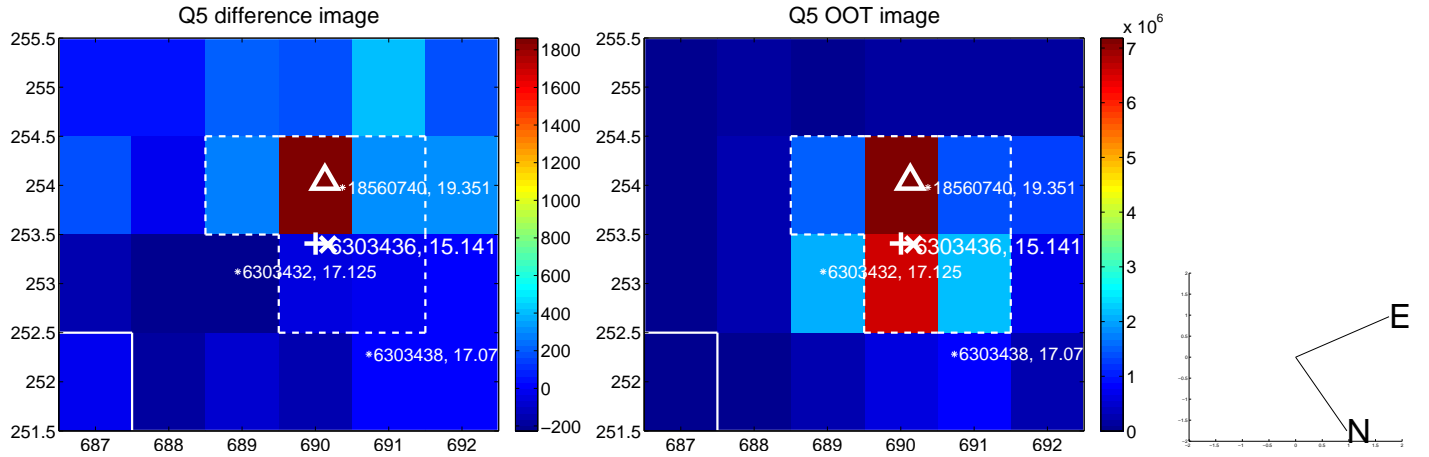


Centroid source offsets from the target star reconstructed from PRF and photometric centroids. **Sky blue crosses: good quarterly centroid offsets; Vermillion crosses: bad quarterly centroid offsets**; magenta cross: average over quarters. Length of the crosses: one- σ uncertainty. Blue circle: three- σ . Red *: target star. Blue *: Other stars. Text next to a star gives its KIC ID and kepmag. KIC IDs > 15,000,000 are from the UKIRT catalog.

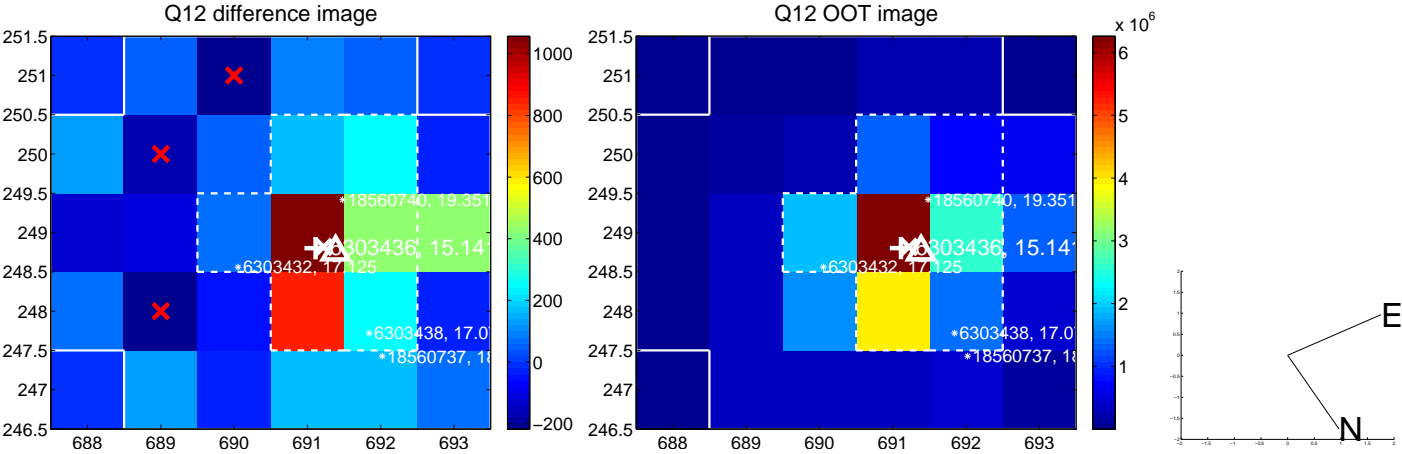
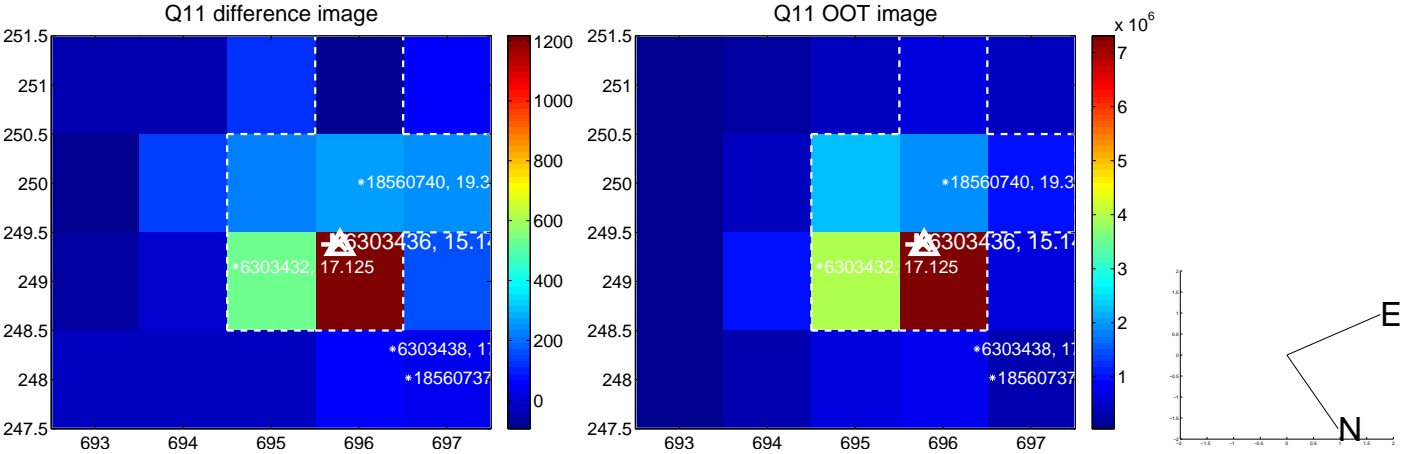
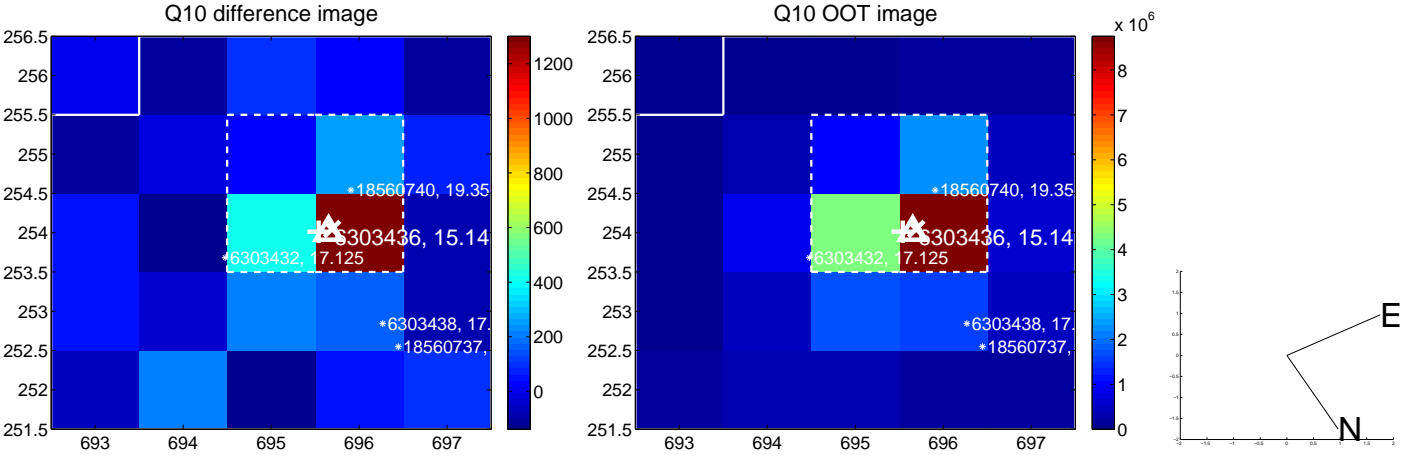
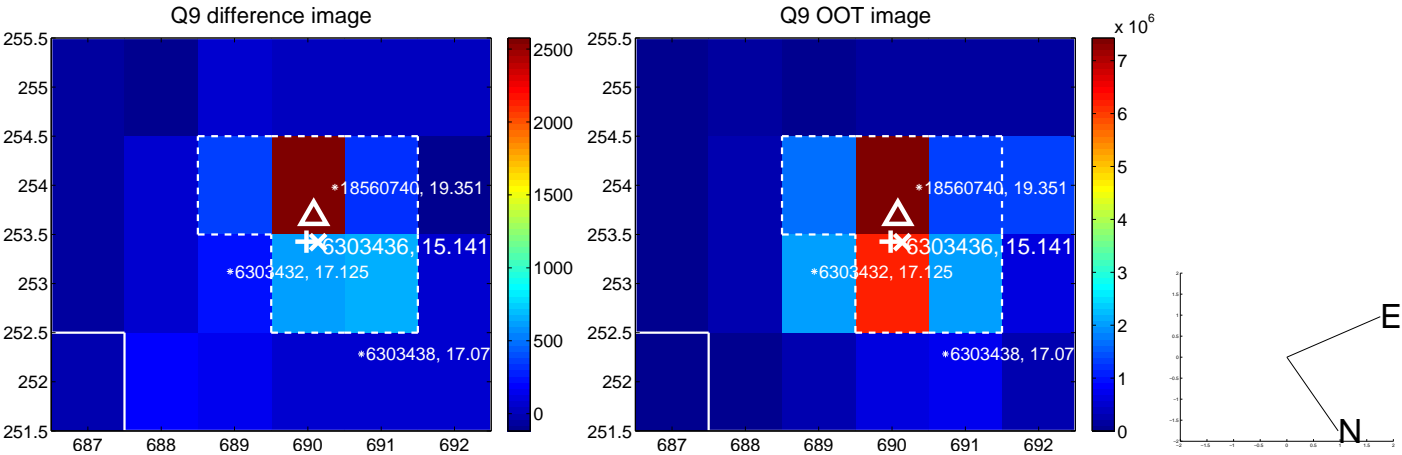
white \times : KIC target position; +: OOT centroid; \triangle : difference centroid. red \times : large negative pixel value.



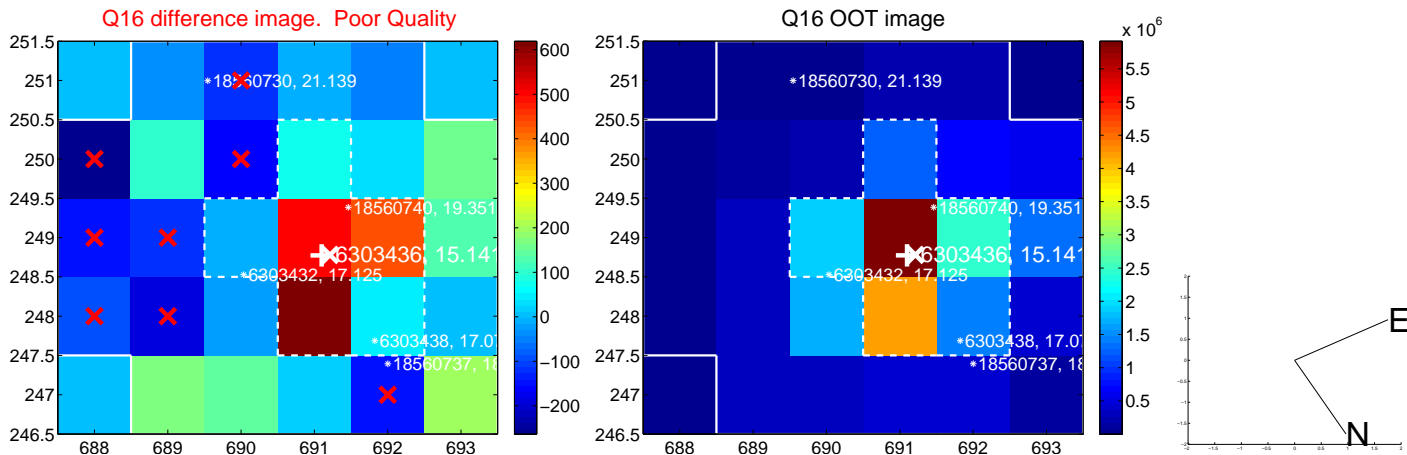
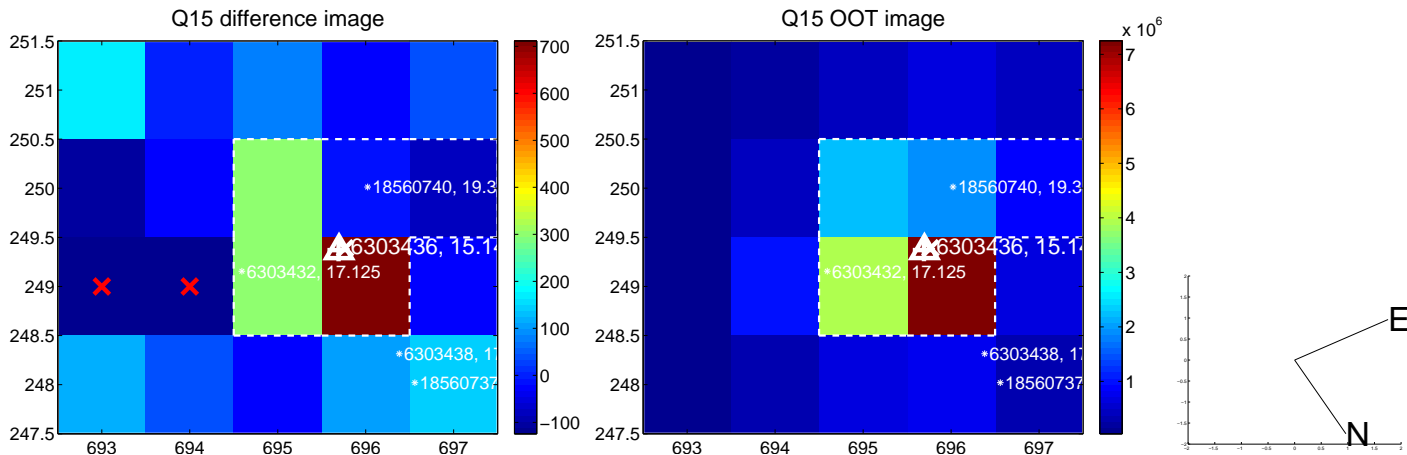
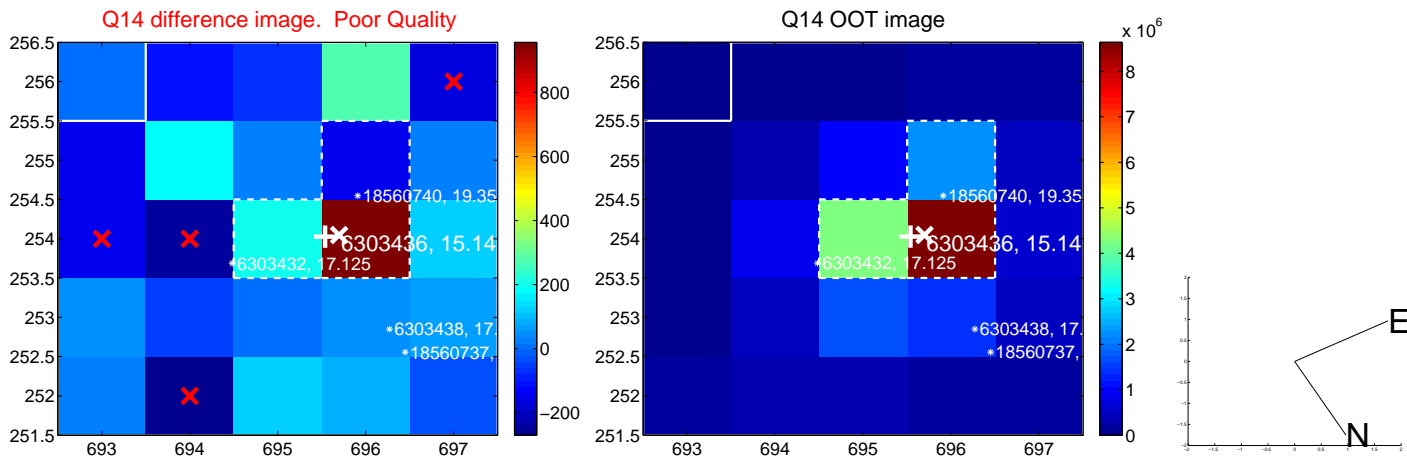
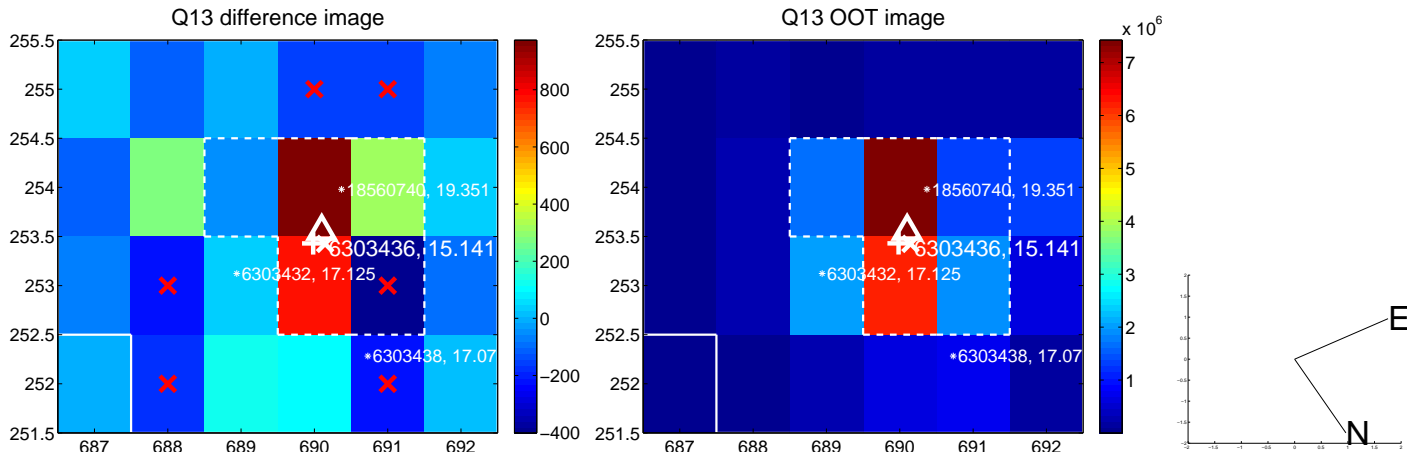
white \times : KIC target position; +: OOT centroid; \triangle : difference centroid. red \times : large negative pixel value.



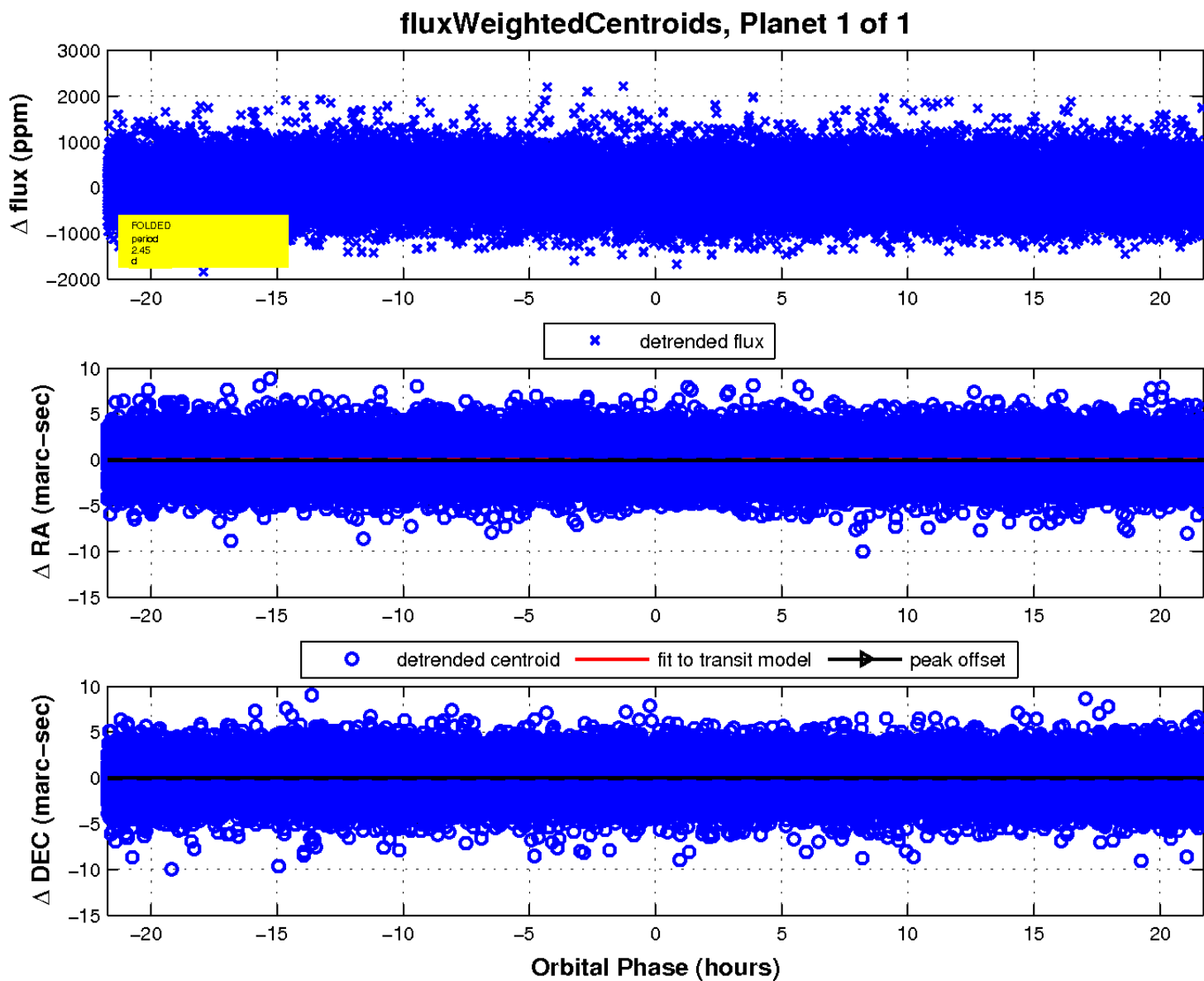
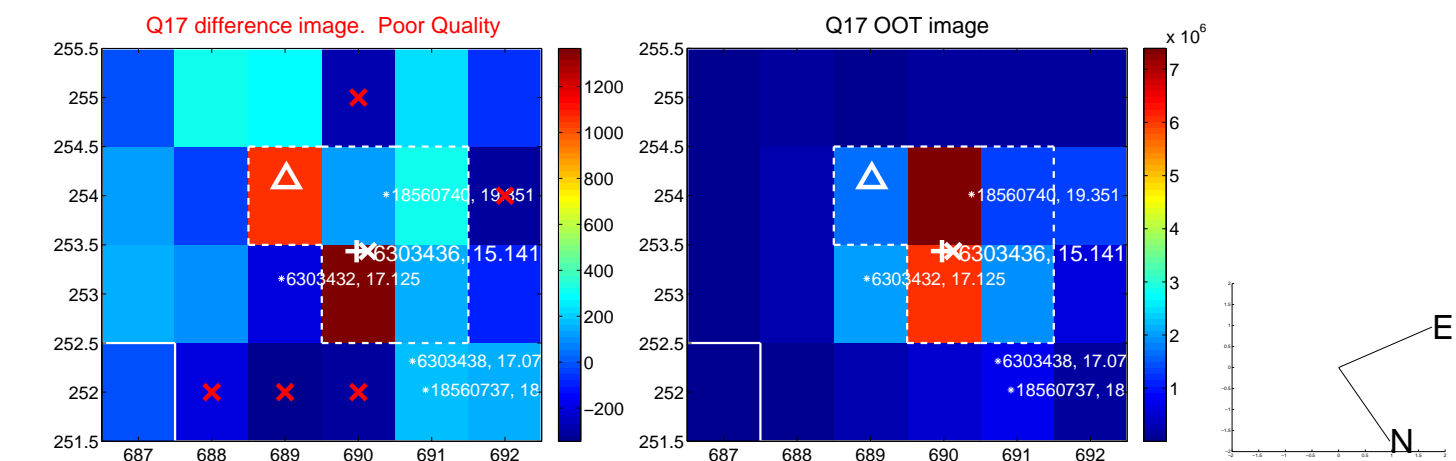
white \times : KIC target position; +: OOT centroid; \triangle : difference centroid. red \times : large negative pixel value.



white \times : KIC target position; $+$: OOT centroid; \triangle : difference centroid. red \times : large negative pixel value.



white \times : KIC target position; $+$: OOT centroid; Δ : difference centroid. red \times : large negative pixel value.



UKIRT Image

Declination

