

KIC 006300348

Q1-17 DR25 TCE Parameters

TCE	Run Type	KOI?	Period (Days)	Epoch (BKJD)	Depth (ppm)	Duration (Hours)	MES	SNR	R_{\star} (R_{\odot})	T_{\star} (K)	R_p (R_{\oplus})	S_p (S_{\oplus})
006300348-01	OBS	0212.01	5.695900	133.535886	4946.8	3.621	349.2	350.1	0.94	6106	6.75	280.06

Robovetter Results

TCE	Run Type	Disp	Score	N	S	C	E	Comments
006300348-01	OBS	PC	1.00	0	0	0	0	NO_COMMENT

Notes: OBS = Observed. INJ = Injected. INV = Inverted. SCR = Scrambled.

N = Not Transit-Like. S = Stellar Eclipse. C = Centroid Offset. E = Ephemeris Match.

See http://exoplanetarchive.ipac.caltech.edu/docs/API_kepcandidate_columns.html#proj_disp_col for comment definitions.

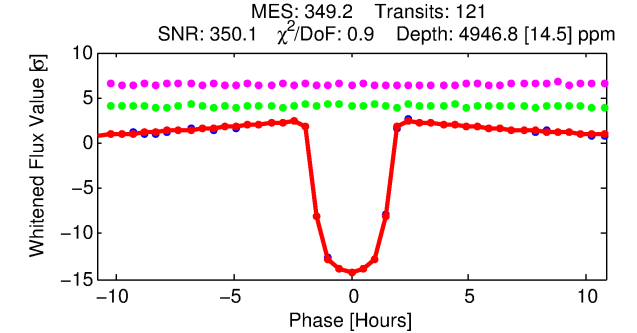
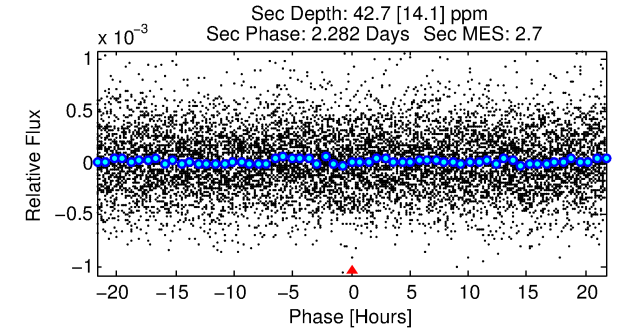
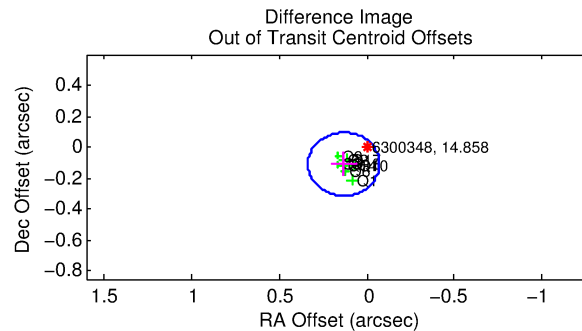
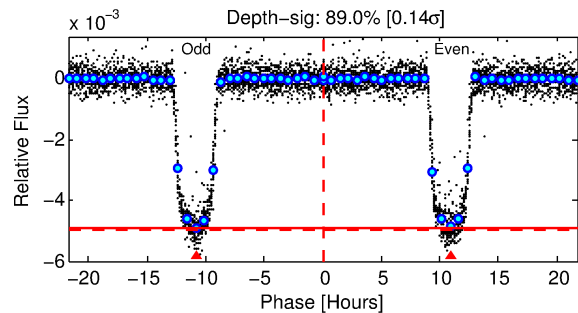
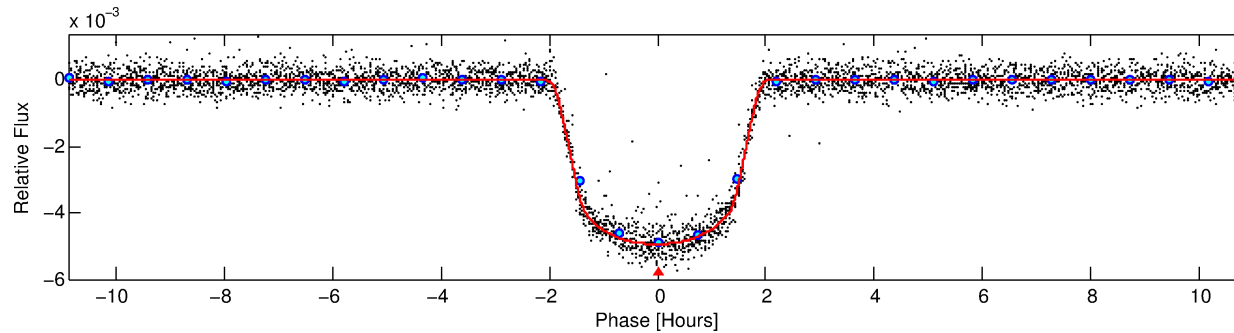
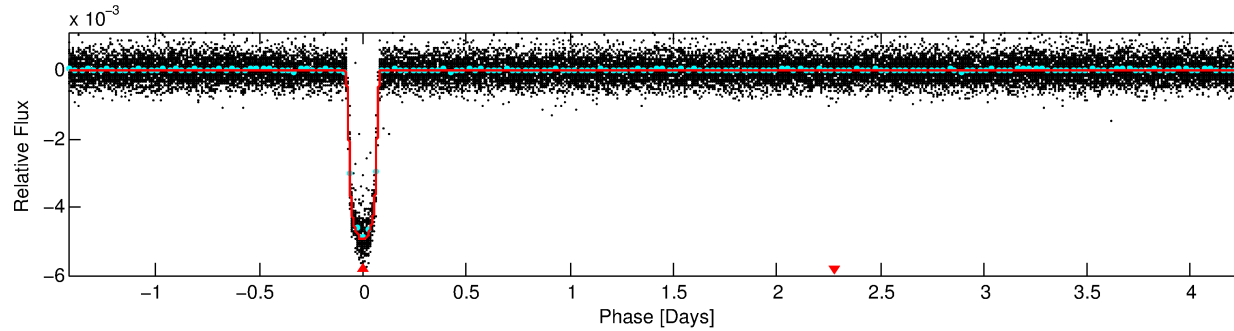
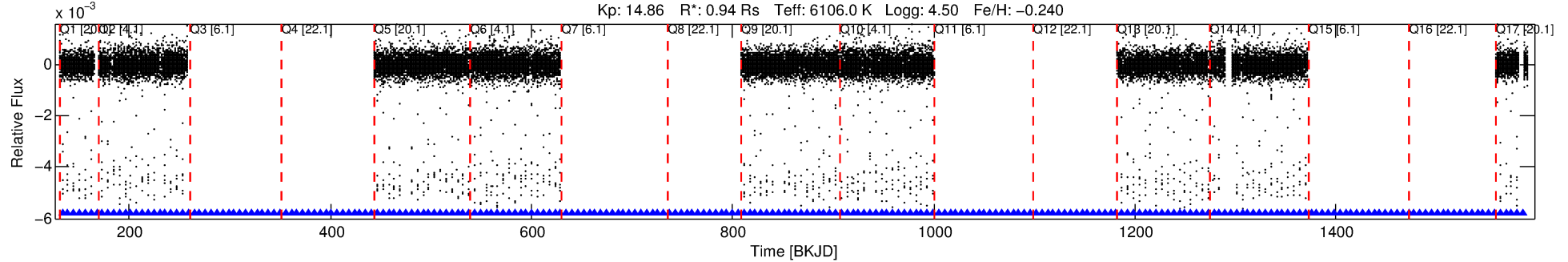
Ephemeris Match Information For 006300348-01

No Significant Match Found

DV One-Page Summary

KIC: 6300348 Candidate: 1 of 1 Period: 5.696 d
KOI: K00212.01 Corr: 0.994

Kp: 14.86 R*: 0.94 Rs Teff: 6106.0 K Logg: 4.50 Fe/H: -0.240



DV Fit Results:

Period = 5.69590 [0.00000] d
Epoch = 133.5359 [0.0002] BKJD
Rp/R* = 0.0658 [0.0010]
a/R* = 11.73 [0.86]
b = 0.43 [0.14]
Seff = 280.06 [120.32]
Teff = 1043 [112] K
Rp = 6.75 [2.18] Re
a = 0.0627 [0.0172] AU
Ag = 2.02 [1.05] [0.97σ]
Teffp = 1924 [176] K [4.23σ]

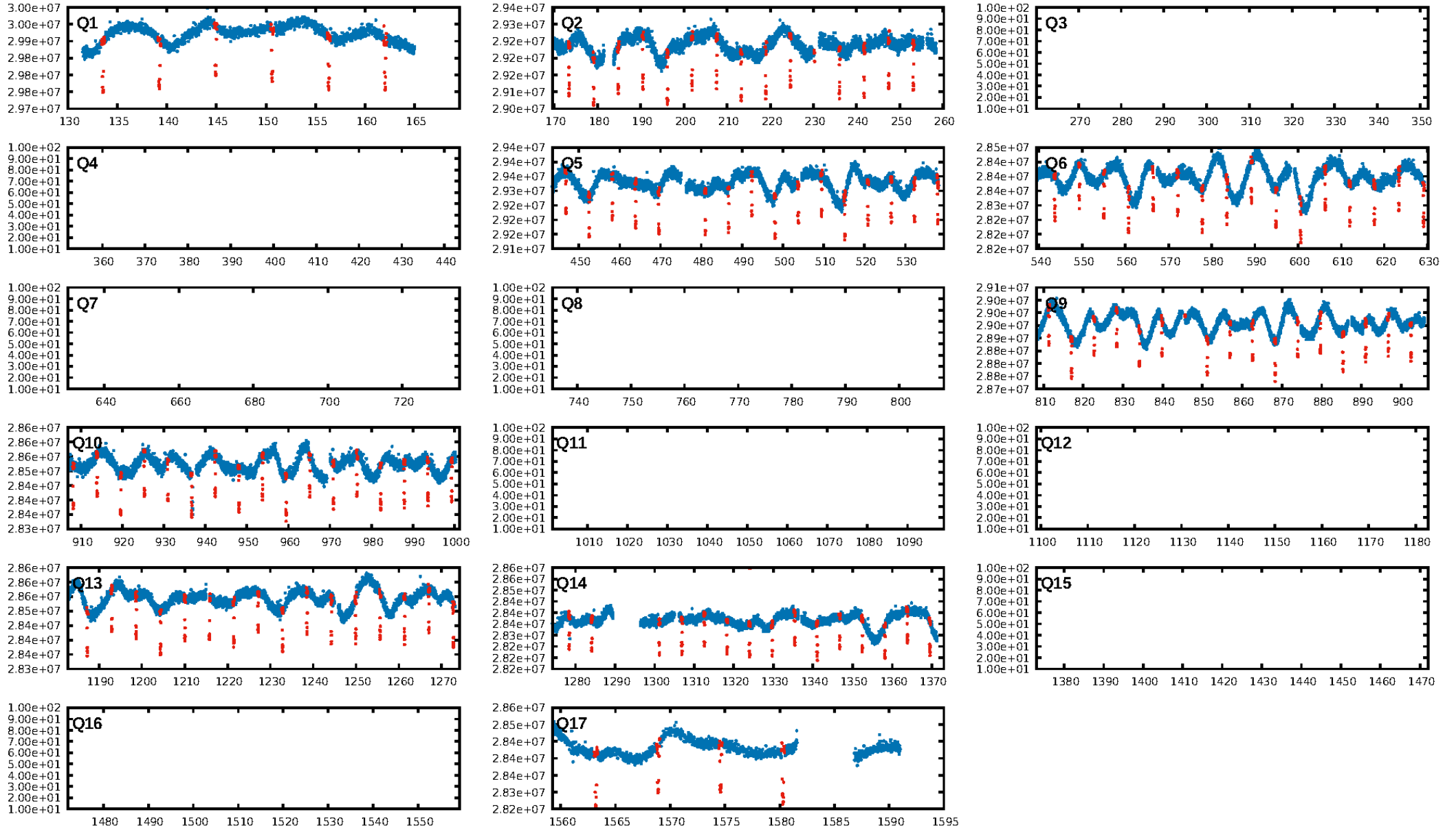
DV Diagnostic Results:

ShortPeriod-sig: N/A
LongPeriod-sig: N/A
ModelChiSquare2-sig: 82.4%
ModelChiSquareGof-sig: 100.0%
Bootstrap-pfa: 0.00e+00
RollingBand-fgt: 1.00 [111/111]
GhostDiagnostic-chr: 6.067
Centroid-sig: 0.0%
Centroid-so: 0.405 arcsec [13.83σ]
OotOffset-rm: 0.171 arcsec [2.51σ]
KicOffset-rm: 0.152 arcsec [2.13σ]
OotOffset-st: 4/0/0/5 [9]
KicOffset-st: 4/0/0/5 [9]
DiffImageQuality-fgm: 1.00 [9/9]
DiffImageOverlap-fno: 1.00 [9/9]

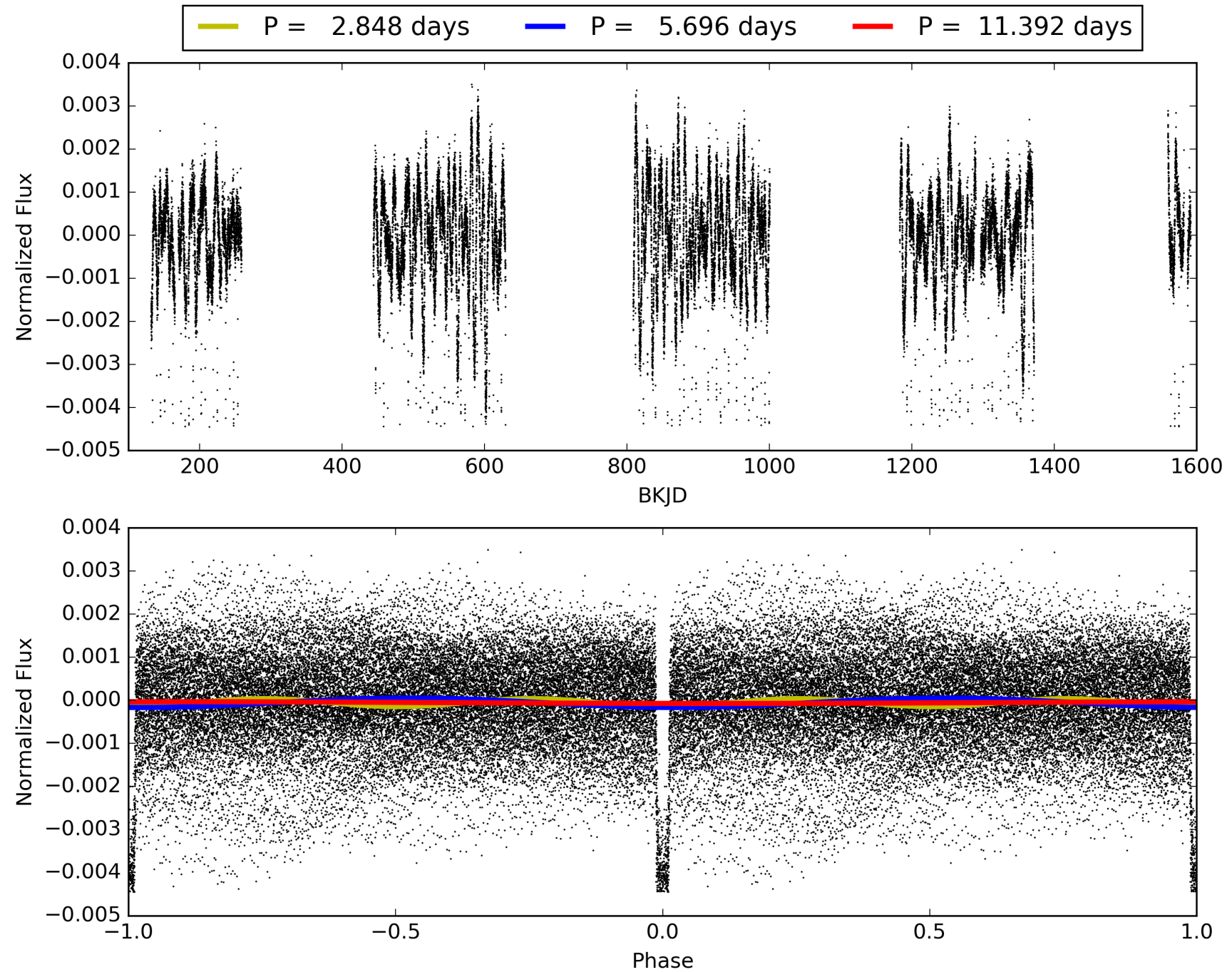
Software Revision: svn+ssh://murzim/repo/soc/tags/release/9.3.42@60958 -- Date Generated: 30-Jan-2016 13:52:39 Z

This Data Validation Report Summary was produced in the Kepler Science Operations Center Pipeline at NASA Ames Research Center

TCE 006300348-01, PDC Light Curves

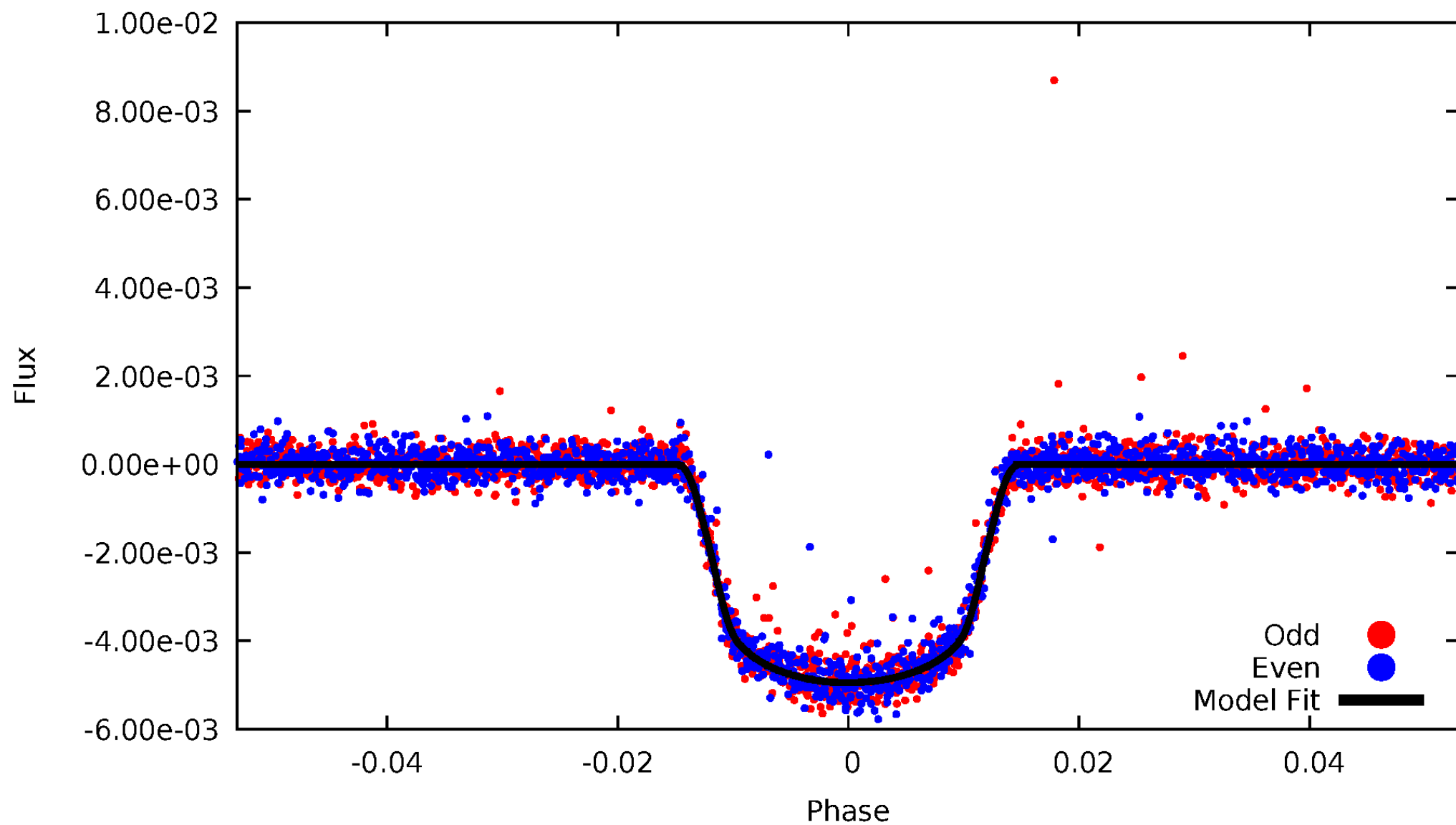


TCE 006300348-01



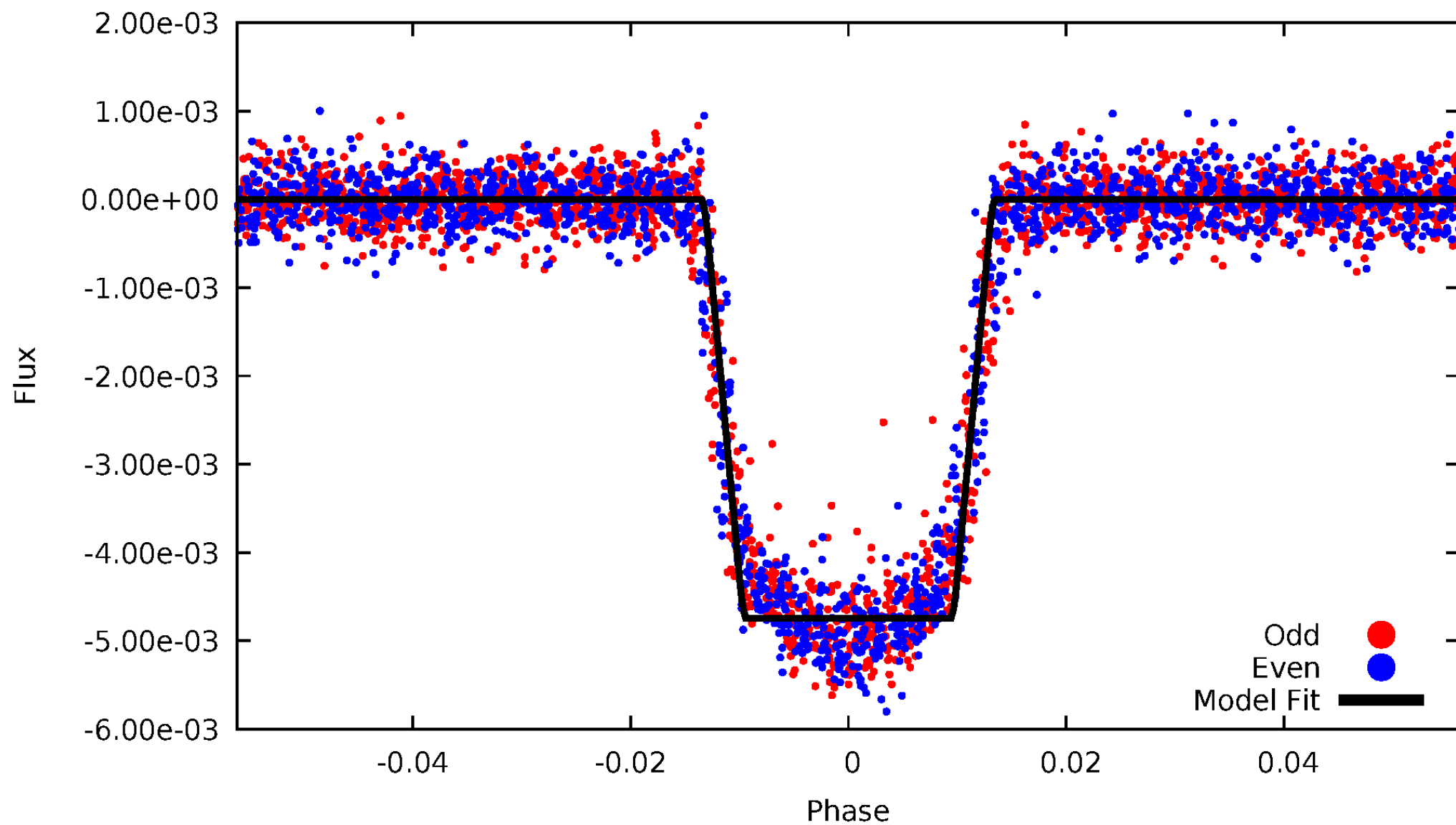
DV Odd/Even

TCE 006300348-01



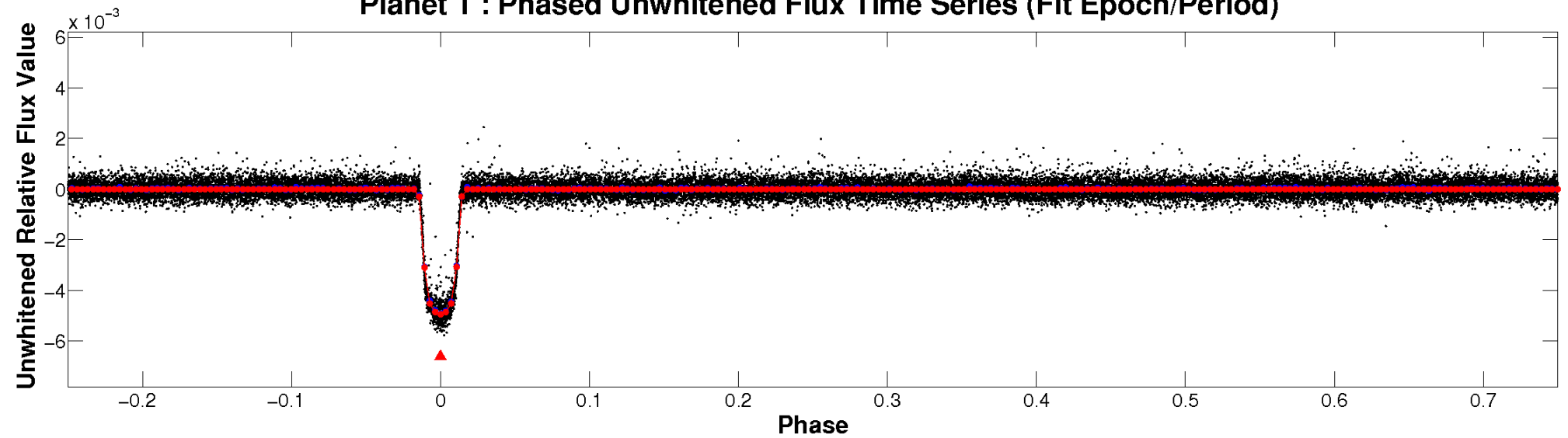
ALT Odd/Even

TCE 006300348-01

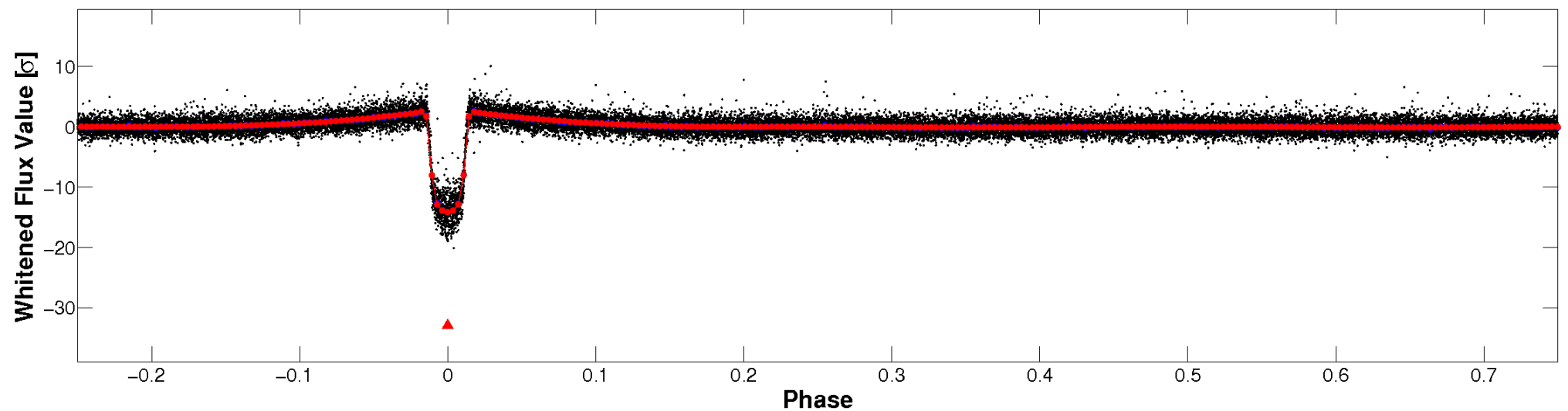


Non-Whitened Vs. Whitened Light Curve

Planet 1 : Phased Unwhitened Flux Time Series (Fit Epoch/Period)

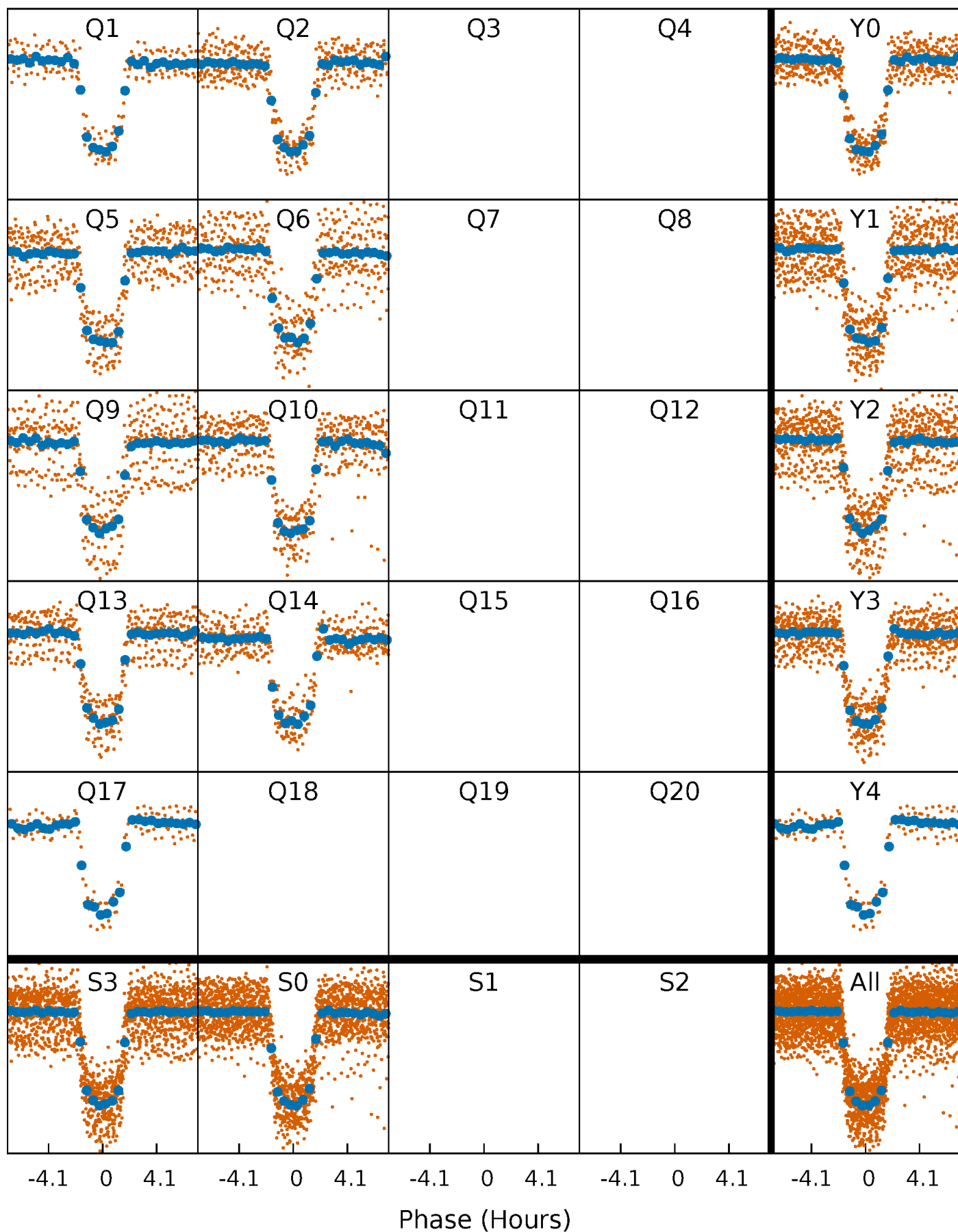


Planet 1 : Phased Whitened Flux Time Series (Fit Epoch/Period)



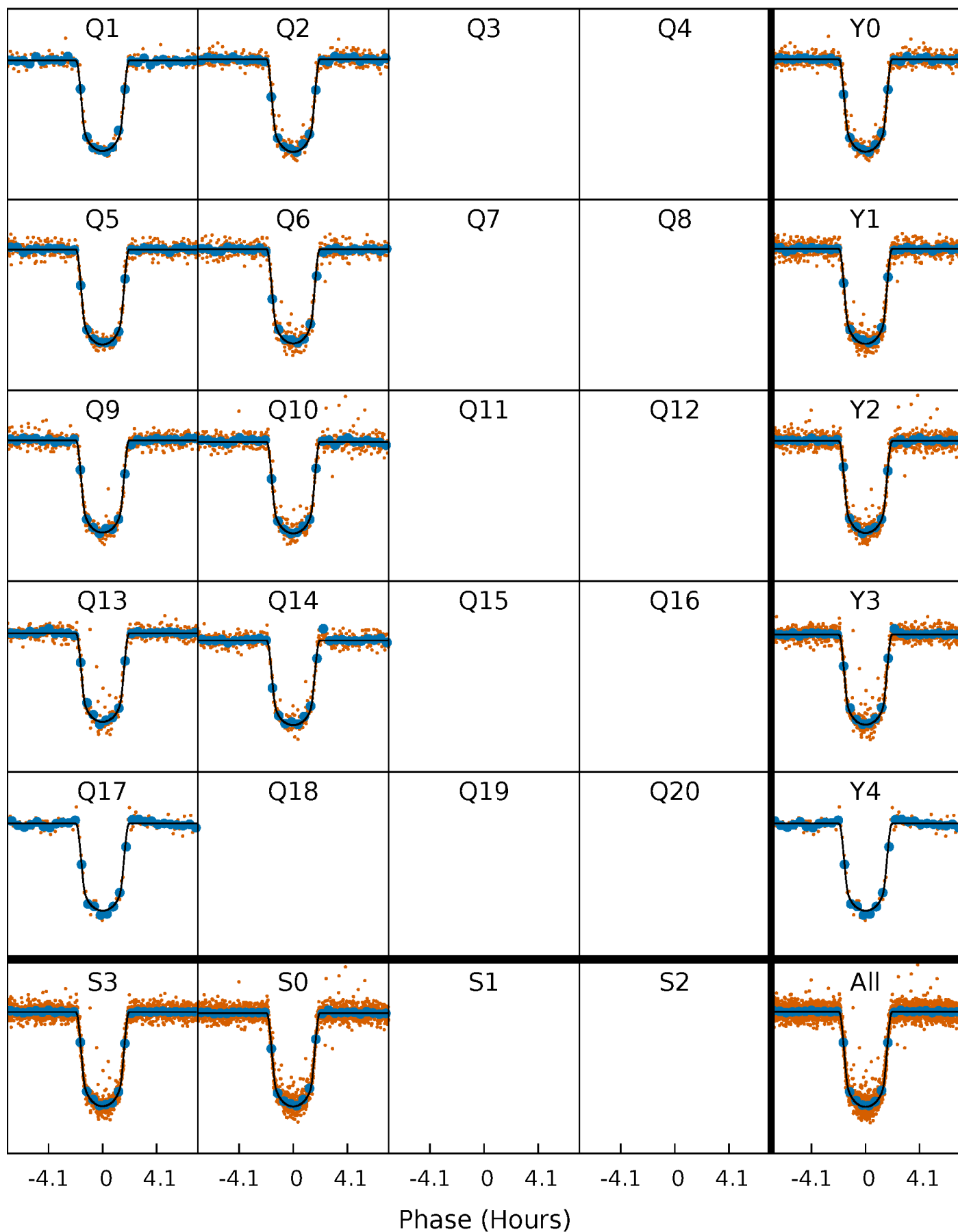
PDC Quarter-Phased Transit Curves

TCE 006300348-01 P= 5.695900 Days $T_0=133.535886$ (BKJD)



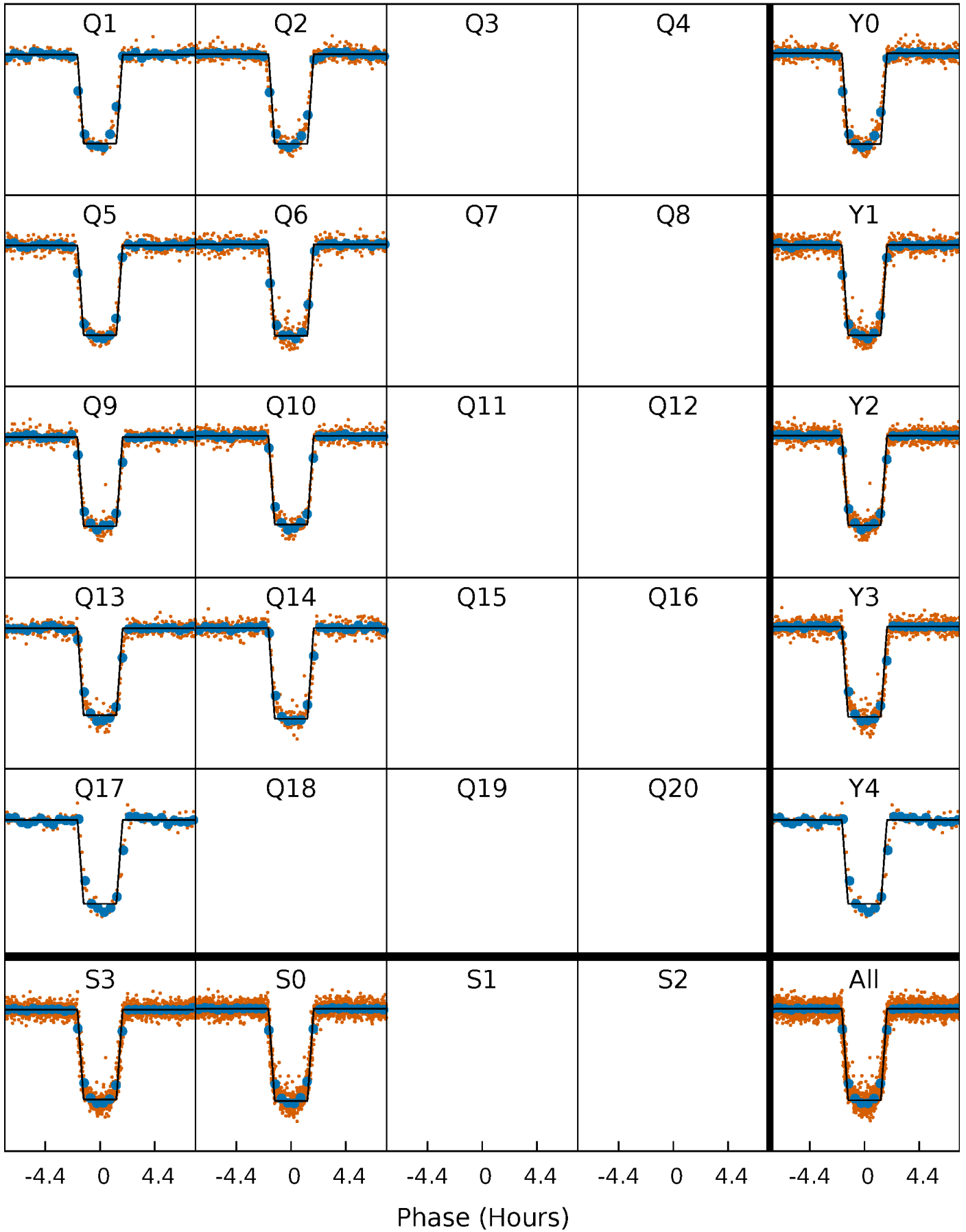
DV Quarter-Phased Transit Curves

TCE 006300348-01 P= 5.695900 Days $T_0=133.535886$ (BKJD)



Alt. Detrend Quarter-Phased Transit Curves

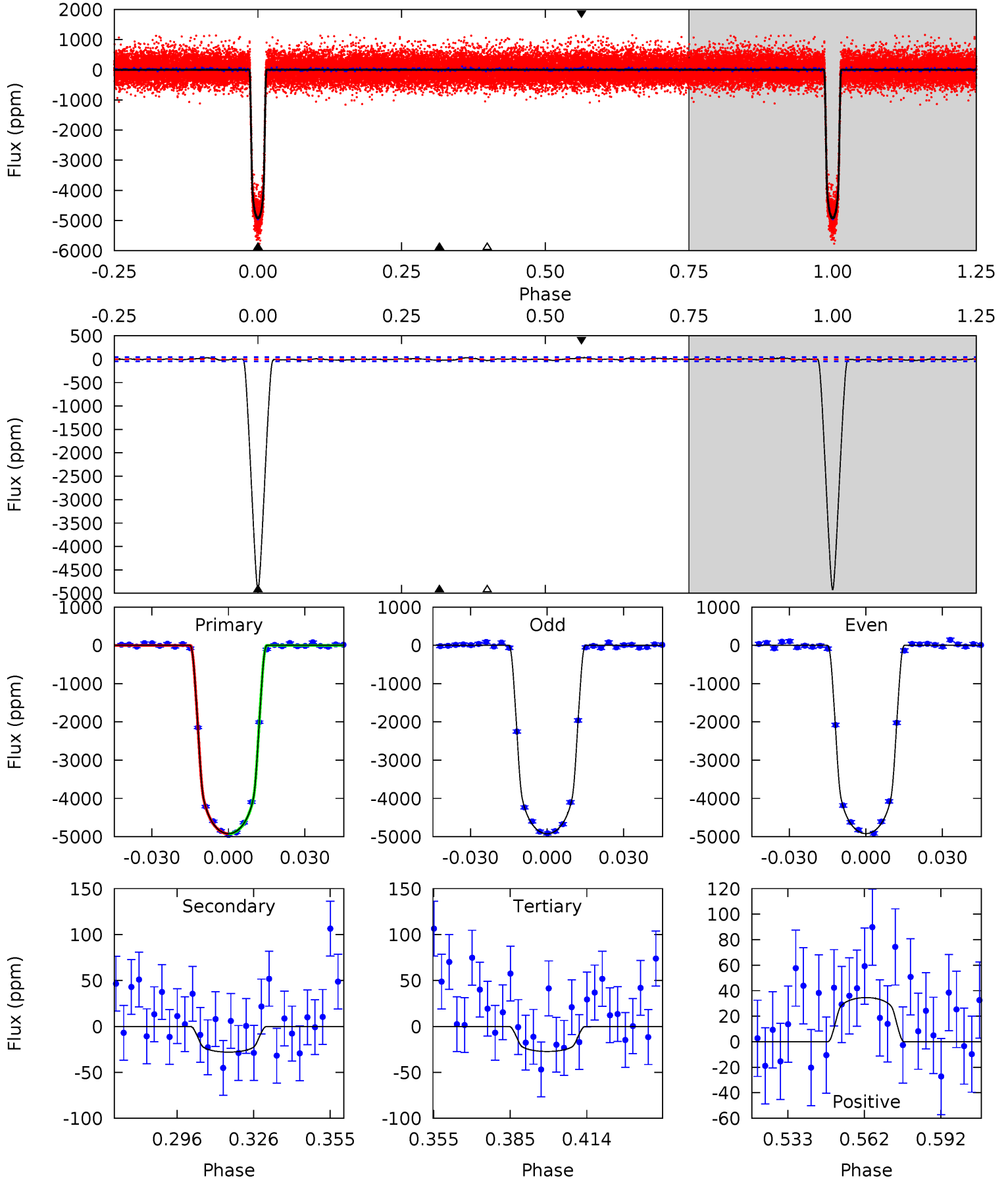
TCE 006300348-01 P= 5.695845 Days $T_0=133.542450$ (BKJD)



DV Model-Shift Uniqueness Test

006300348-01, P = 5.695900 Days, E = 127.839986 Days

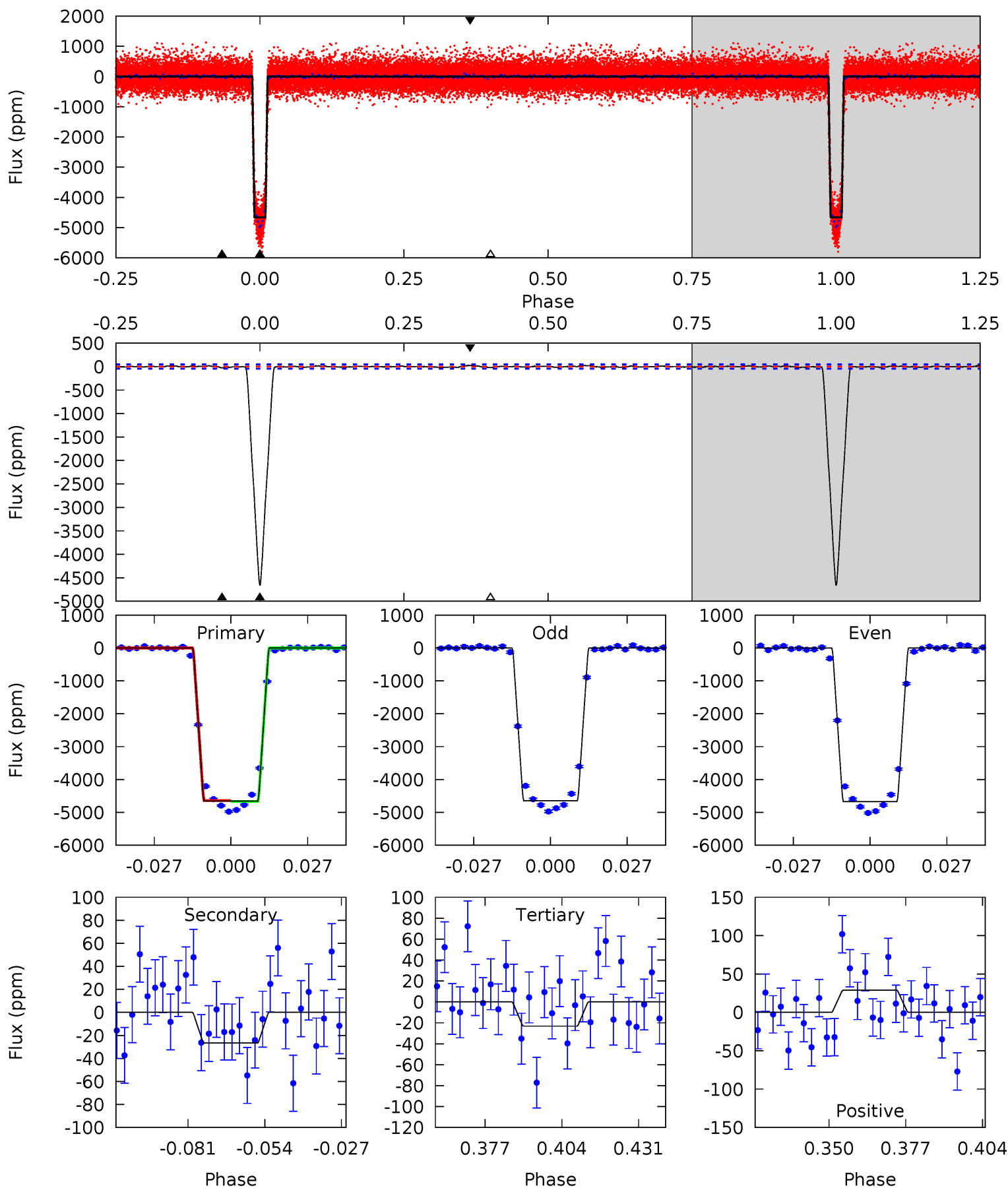
Pri	Sec	Ter	Pos	FA ₁	FA ₂	F _{Red}	Pri-Ter	Pri-Pos	Sec-Ter	Sec-Pos	Odd-Evn	DMM	Shape	TAT
529.5	3.01	2.93	3.72	4.81	2.18	1.30	526.5	525.7	0.07	-0.71	0.23	0.99	0.01	0.15



Alt Model-Shift Uniqueness Test

006300348-01, P = 5.695845 Days, E = 127.846605 Days

Pri	Sec	Ter	Pos	FA ₁	FA ₂	F _{Red}	Pri-Ter	Pri-Pos	Sec-Ter	Sec-Pos	Odd-Evn	DMM	Shape	TAT
488.3	2.79	2.42	3.04	4.83	2.21	0.90	485.9	485.3	0.37	-0.24	1.33	1.00	0.01	1.50



Stellar Parameters For KIC 006300348

	$T_{\text{eff}}(K)$	$\log(g)$	[Fe/H]	$R (R_{\odot})$	$M(M_{\odot})$	$p_{\star} (\text{g}\cdot\text{cm}^{-3})$
	6106^{+190}_{-233}	$4.497^{+0.052}_{-0.221}$	$-0.240^{+0.250}_{-0.300}$	$0.940^{+0.303}_{-0.101}$	$1.013^{+0.139}_{-0.139}$	$1.716^{+0.493}_{-0.960}$
	+3%/-4%	+1%/-5%	+104%/-125%	+32%/-11%	+14%/-14%	+29%/-56%
Source	KIC0	KIC0	KIC0	DSEP		

KIC = Kepler Input Catalog; PHO = Photometry; SPE = Spectroscopy; AST = Asteroseismology
 TRA = Transits; DESP = Dartmouth Models; MULT = Multiple Models

Secondary Eclipse Parameters for KIC 006300348-01 / KOI 0212.01

Detrend	Depth (ppm)	$R_p (R_{\oplus})$	$T_{max} (K)$	$T_{obs} (K)$	A_{obs}
DV	-28 ± 9	$6.93^{+1.28}_{-0.59}$	1489^{+117}_{-73}	2468^{+130}_{-166}	$1.163^{+0.550}_{-0.404}$
Alt.	-27 ± 10	$7.21^{+1.46}_{-0.60}$	1487^{+122}_{-75}	2398^{+132}_{-214}	$0.993^{+0.464}_{-0.426}$

T_{max} = Theoretical Maximum Planetary Temperature
 T_{obs} = Observed Planetary Temperature (Assuming A=0.3)
 A_{obs} = Observed Albedo (Assuming T=0)

If a secondary eclipse is present, the system is likely an EB if $T_{obs} \gg T_{max}$ AND $A_{obs} \gg 1.0$

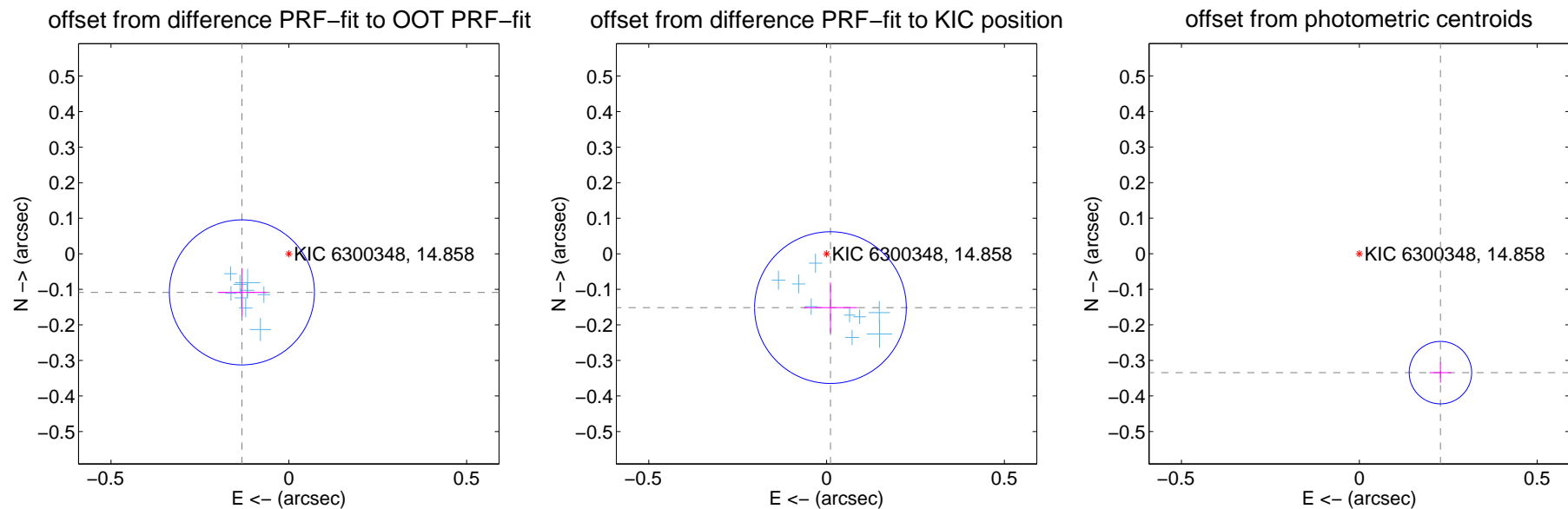
DV Centroid Data

Supplemental centroid analysis for 006300348-01. Kepler magnitude: 14.86. Transit SNR 350.08

There are 9 quarters with good PRF difference image offsets

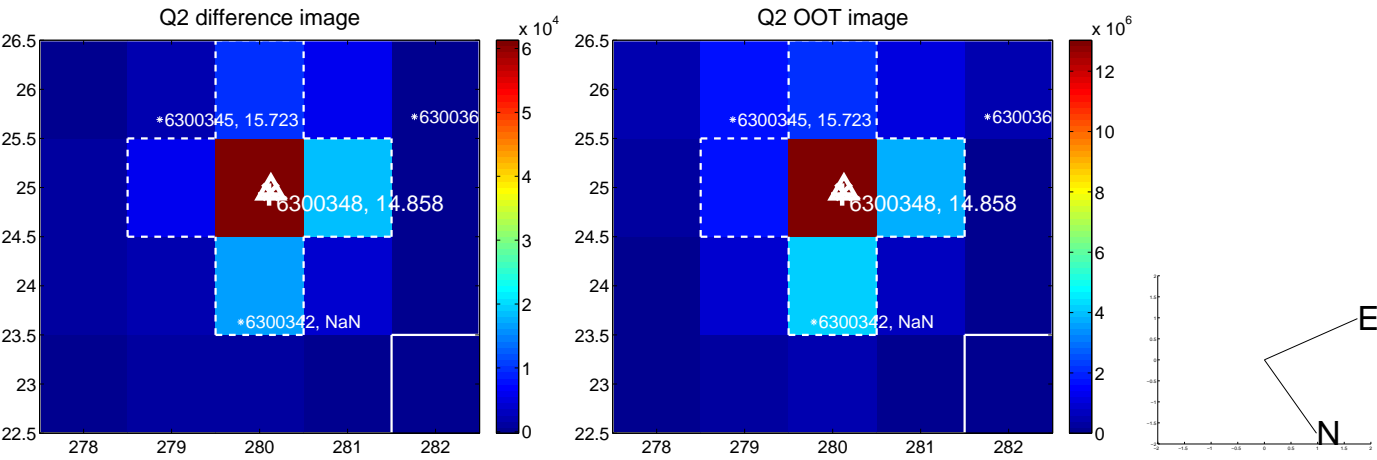
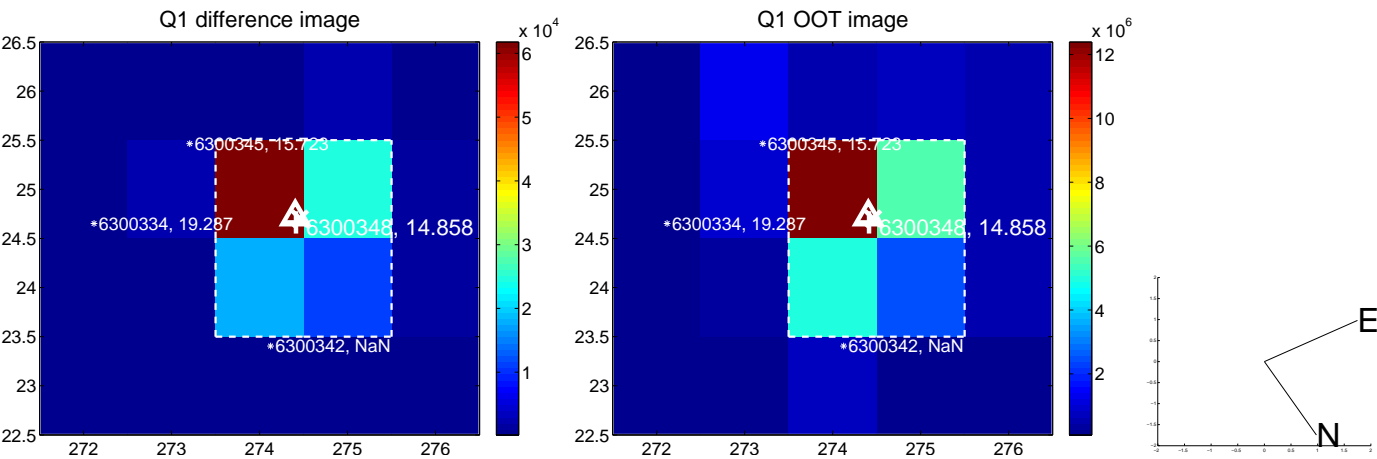
The direct PRF centroid is offset from the target star catalog position by about 0.30 arcsec

	Distance in arcsec	Distance / σ	Δ RA	Δ Dec
PRF-fit source offset from OOT	0.171 ± 0.068	2.51	0.132 ± 0.068	-0.109 ± 0.068
PRF-fit source offset from KIC position	0.152 ± 0.071	2.13	-0.011 ± 0.075	-0.151 ± 0.071
photometric centroid source offset	0.40 ± 0.03	13.83	-0.23 ± 0.03	-0.33 ± 0.03

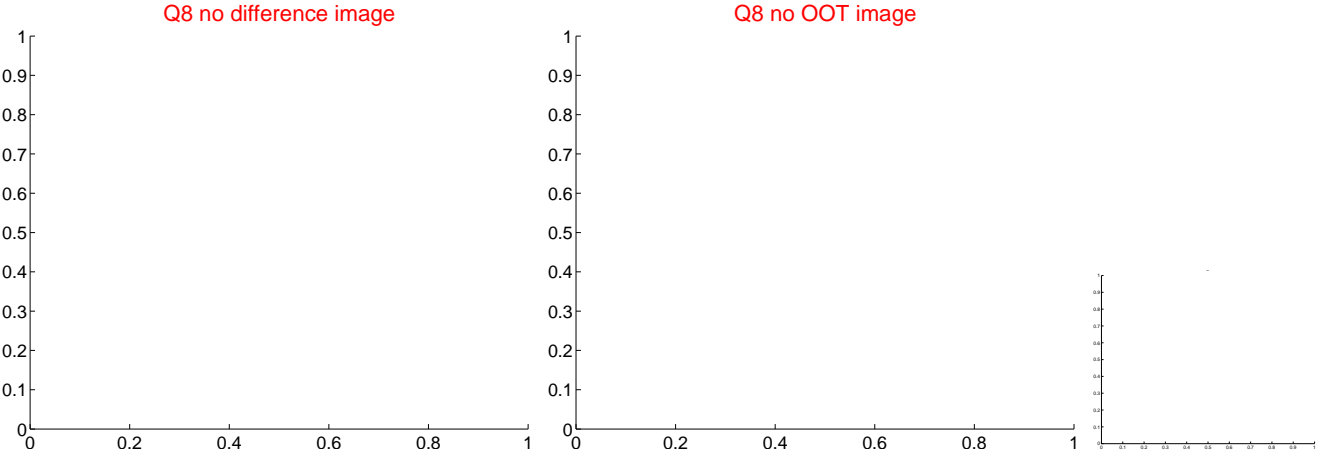
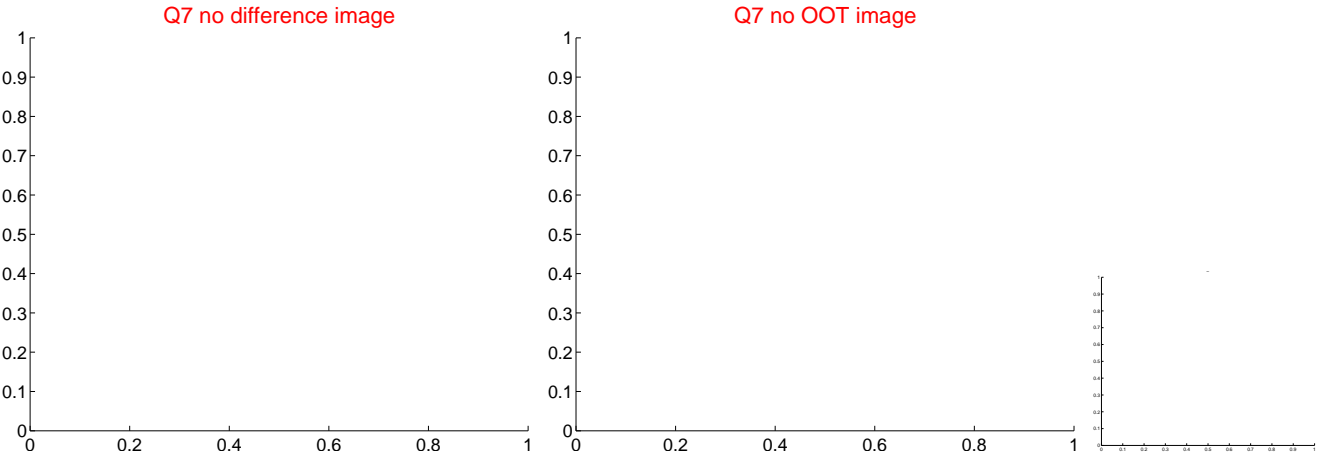
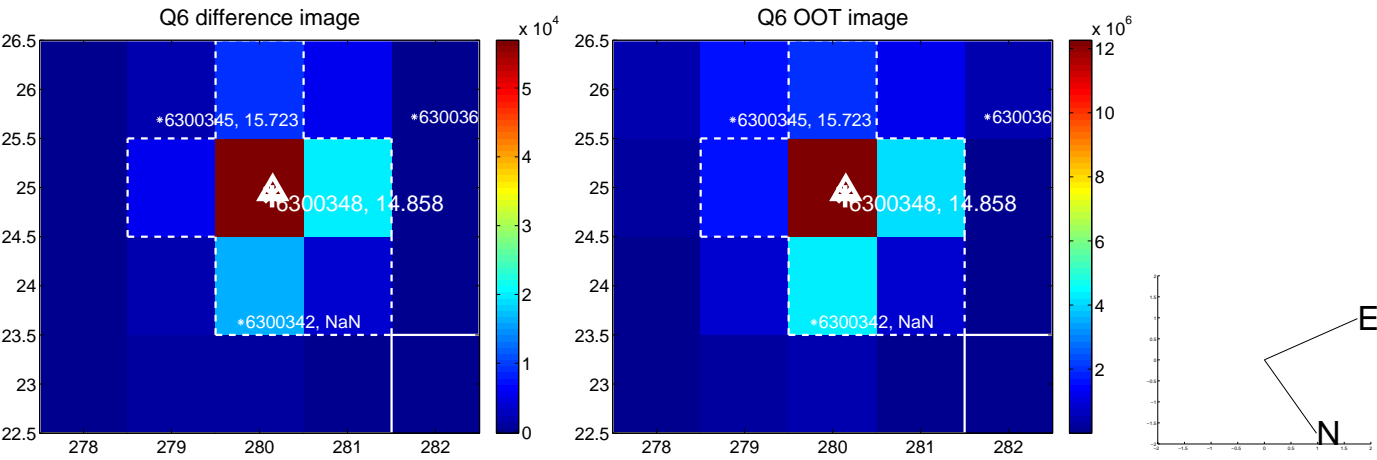
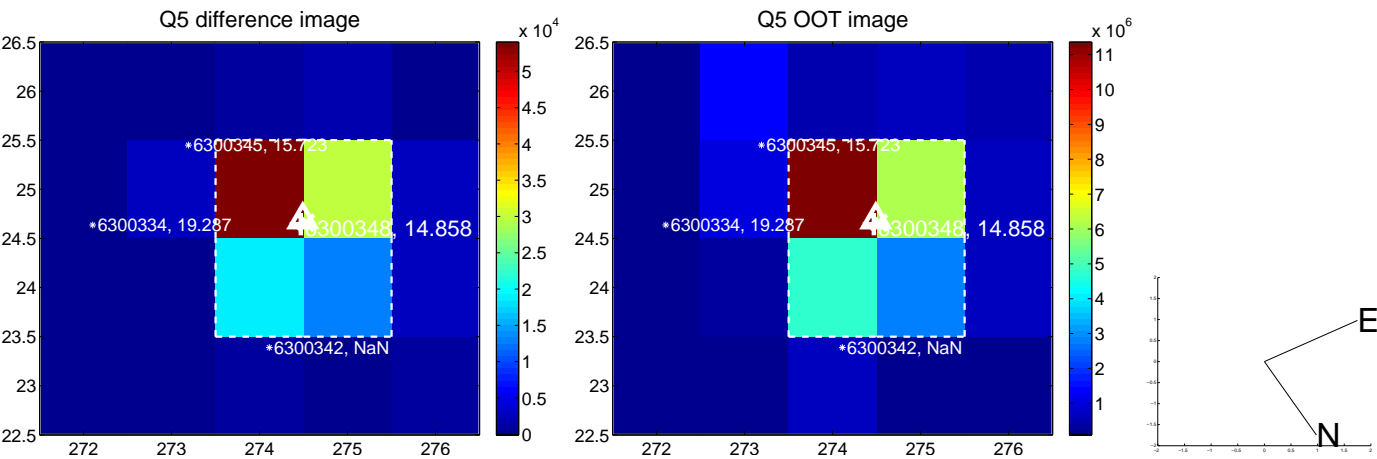


Centroid source offsets from the target star reconstructed from PRF and photometric centroids. **Sky blue crosses: good quarterly centroid offsets; Vermillion crosses: bad quarterly centroid offsets**; magenta cross: average over quarters. Length of the crosses: one- σ uncertainty. Blue circle: three- σ . Red *: target star. Blue *: Other stars. Text next to a star gives its KIC ID and kepmag. KIC IDs > 15,000,000 are from the UKIRT catalog.

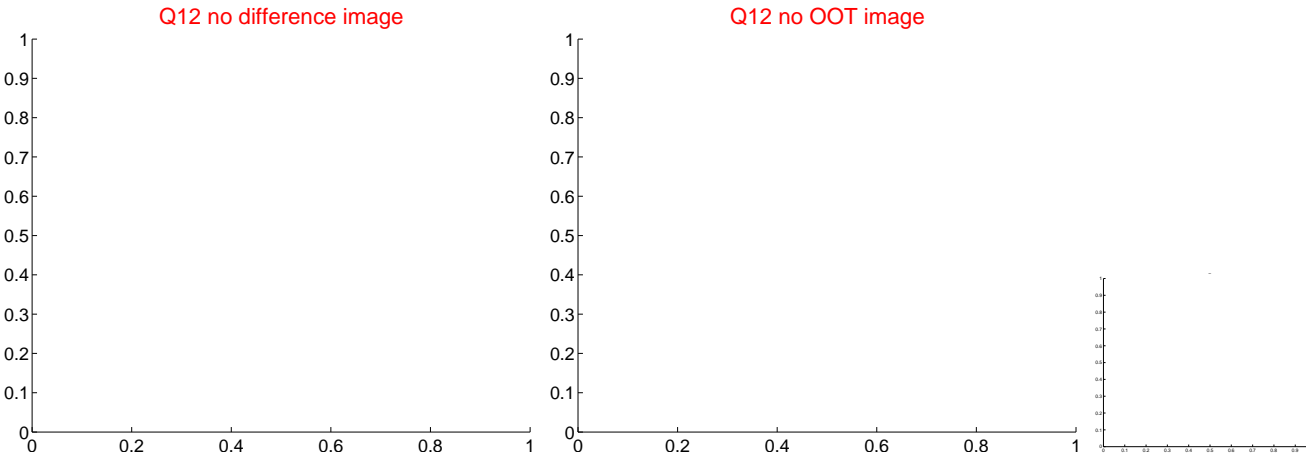
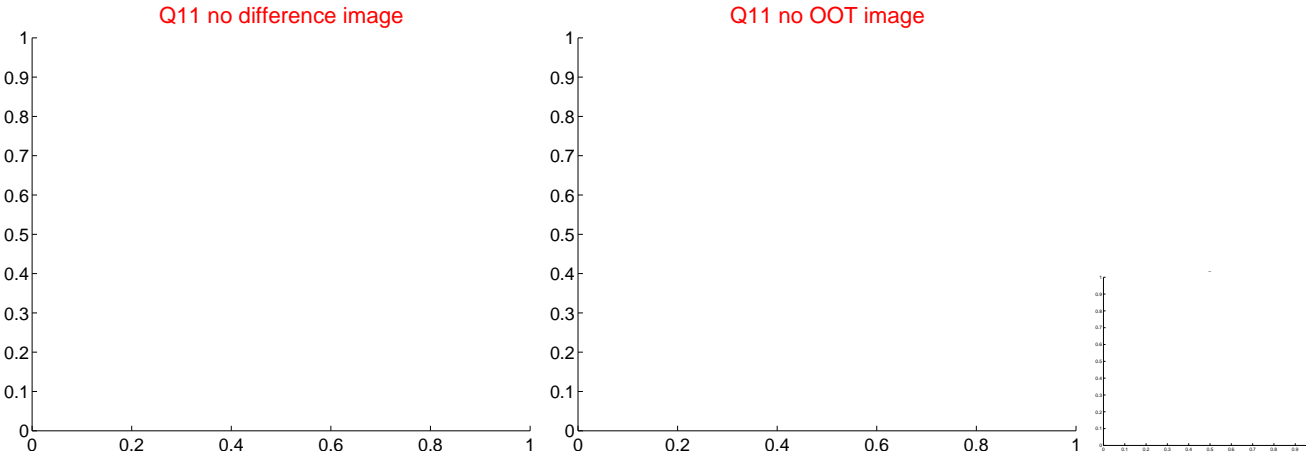
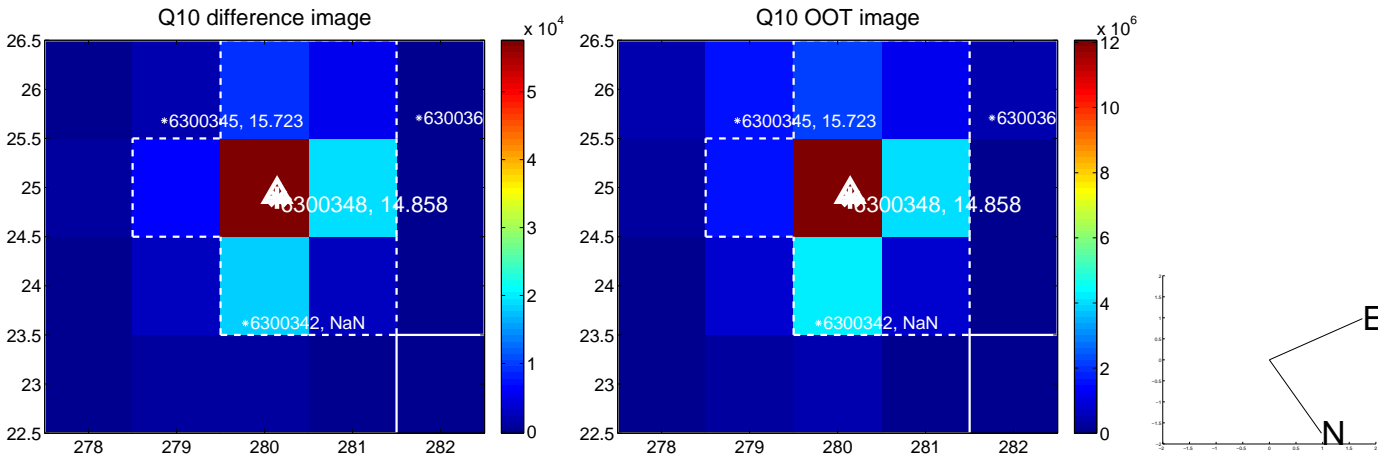
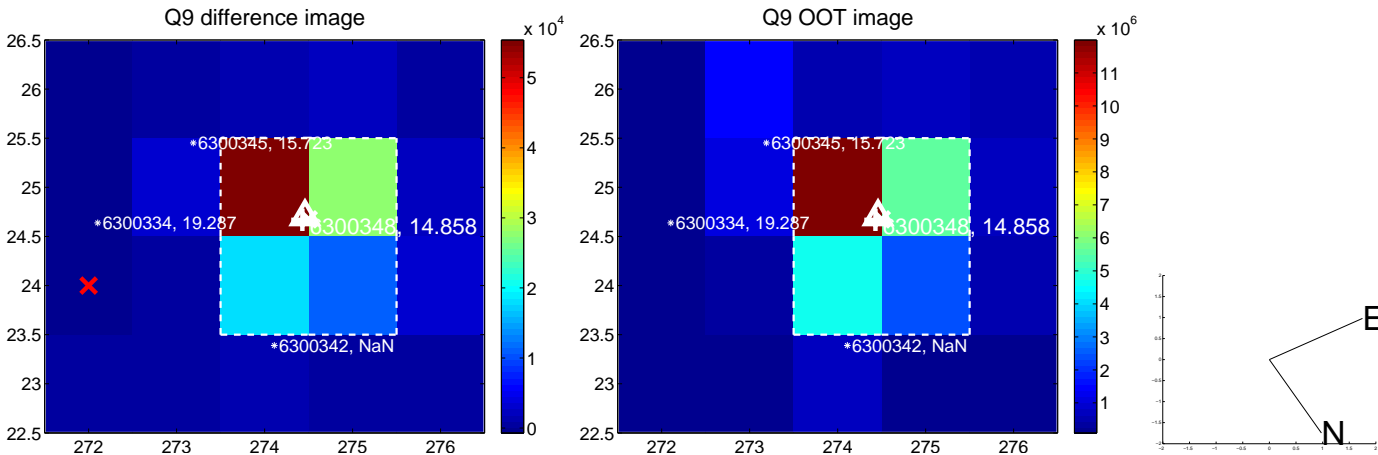
white \times : KIC target position; $+$: OOT centroid; \triangle : difference centroid. red \times : large negative pixel value.



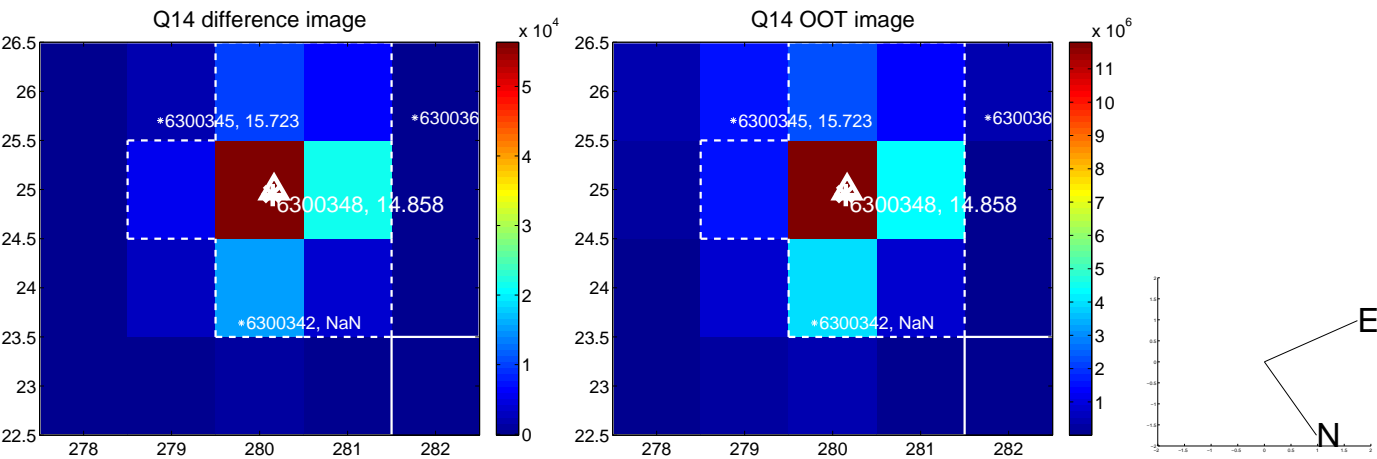
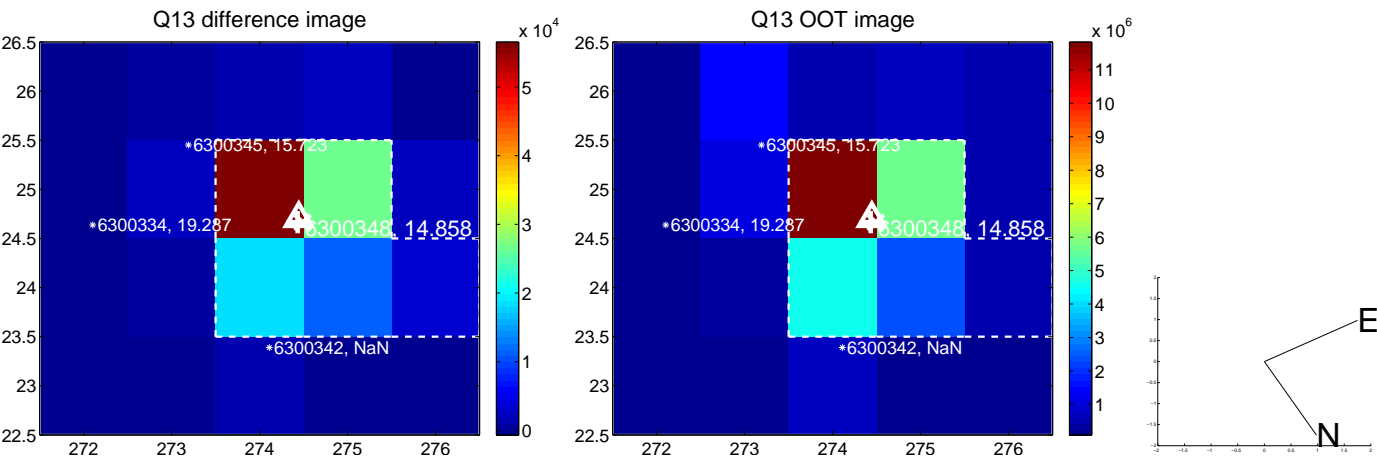
white \times : KIC target position; $+$: OOT centroid; \triangle : difference centroid. red \times : large negative pixel value.



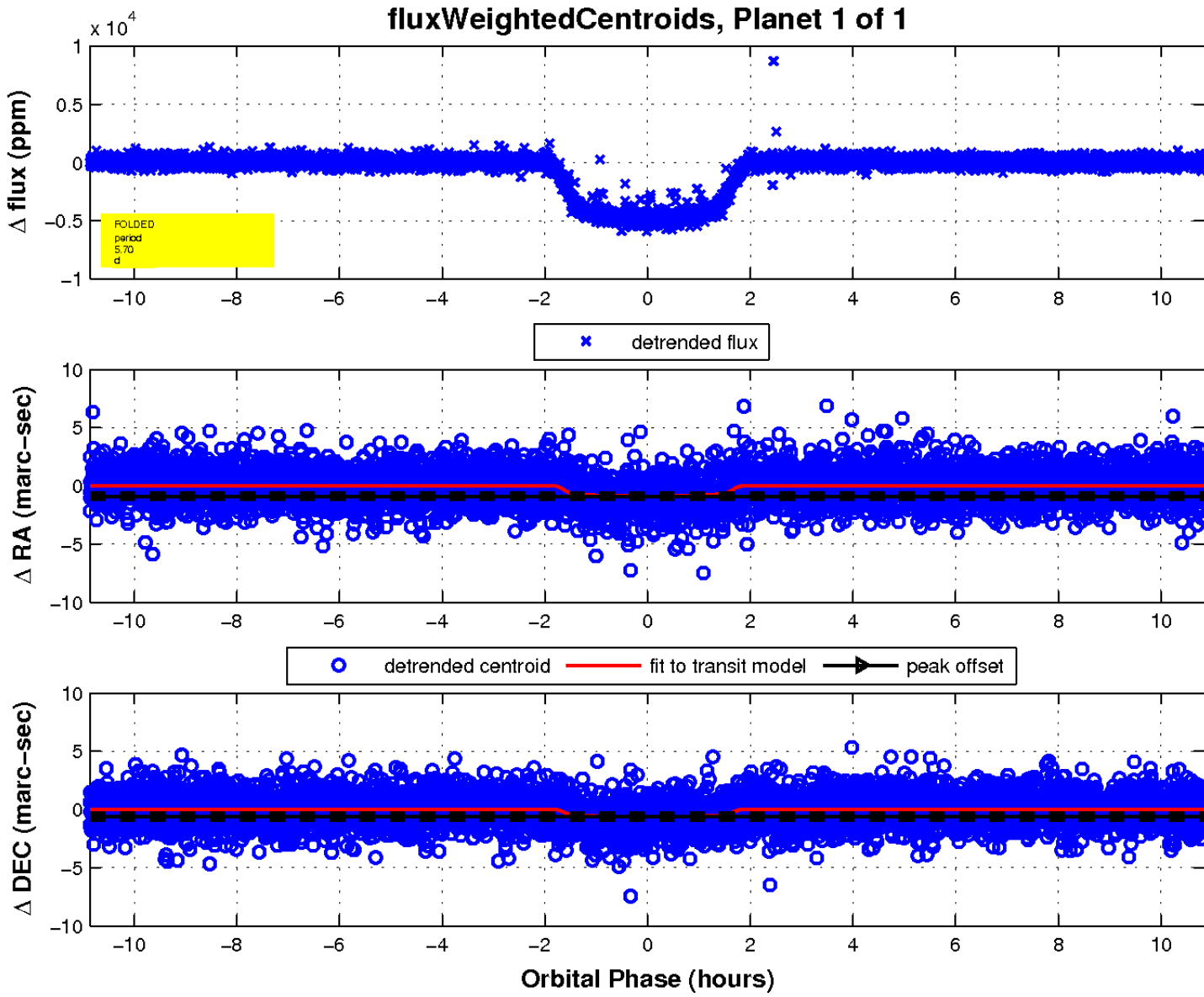
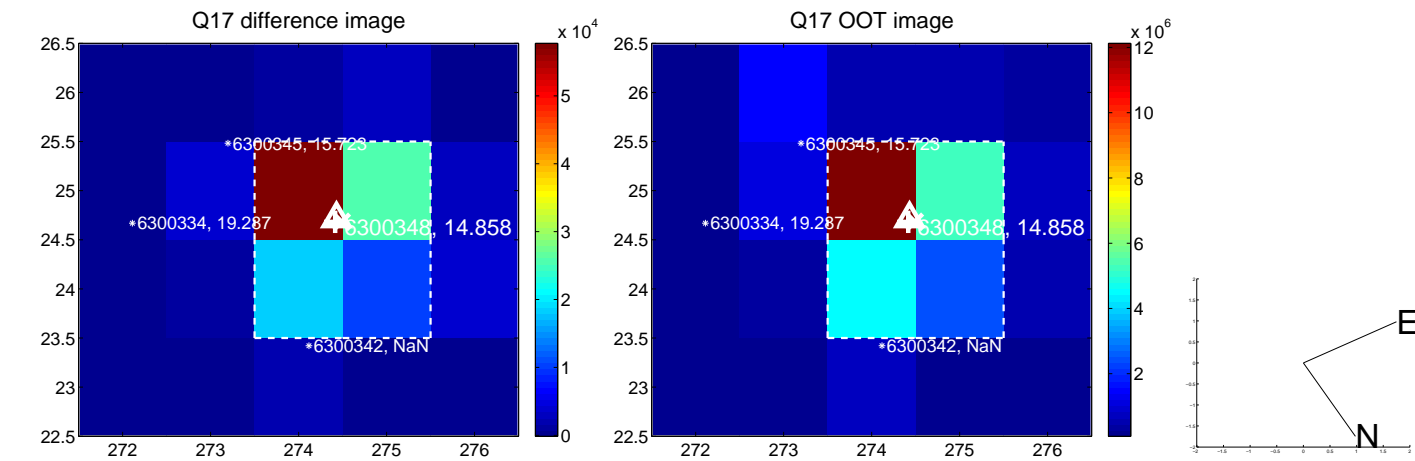
white \times : KIC target position; $+$: OOT centroid; \triangle : difference centroid. red \times : large negative pixel value



white \times : KIC target position; $+$: OOT centroid; \triangle : difference centroid. red \times : large negative pixel value.



white \times : KIC target position; $+$: OOT centroid; \triangle : difference centroid. red \times : large negative pixel value.



UKIRT Image

Declination

