

KIC 006265665

Q1-17 DR25 TCE Parameters

TCE	Run Type	KOI?	Period (Days)	Epoch (BKJD)	Depth (ppm)	Duration (Hours)	MES	SNR	R_{\star} (R_{\odot})	T_{\star} (K)	R_p (R_{\oplus})	S_p (S_{\oplus})
006265665-01	OBS	3436.01	44.201934	163.210537	227.2	4.893	12.0	11.8	0.75	5002	1.22	6.60

Robovetter Results

TCE	Run Type	Disp	Score	N	S	C	E	Comments
006265665-01	OBS	PC	0.97	0	0	0	0	CENT_KIC_POS

Notes: OBS = Observed. INJ = Injected. INV = Inverted. SCR = Scrambled.

N = Not Transit-Like. S = Stellar Eclipse. C = Centroid Offset. E = Ephemeris Match.

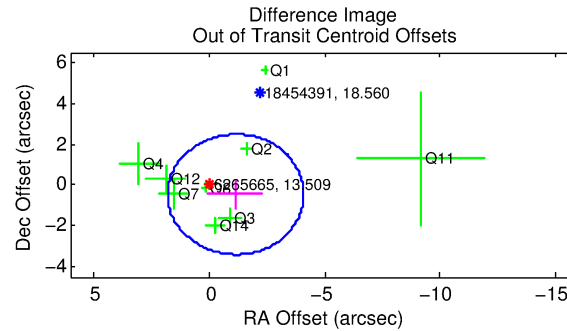
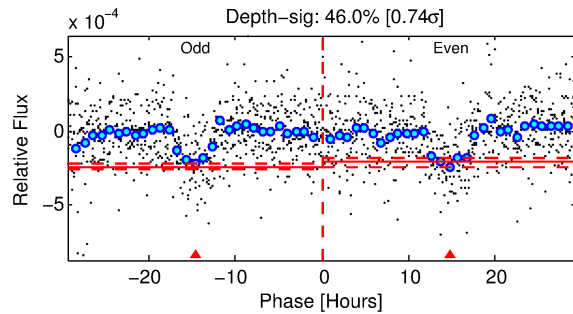
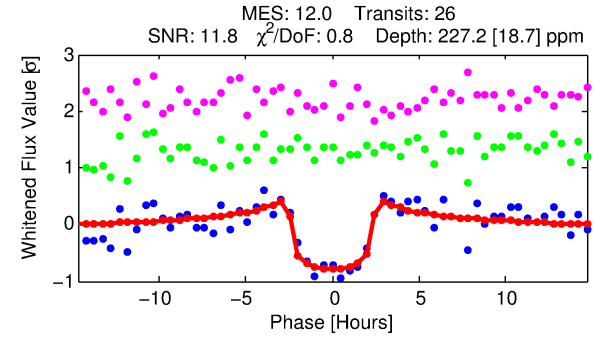
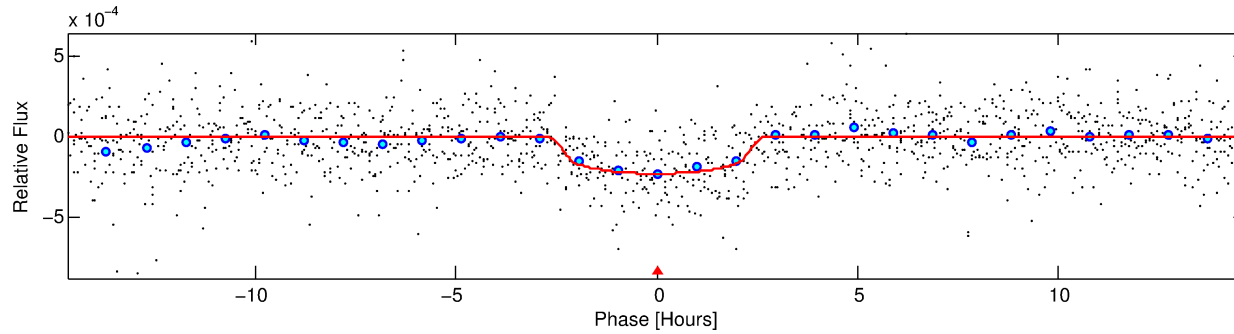
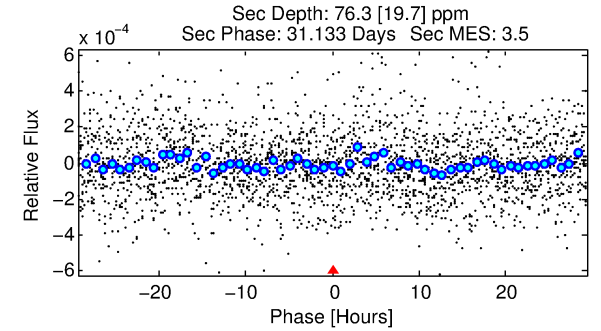
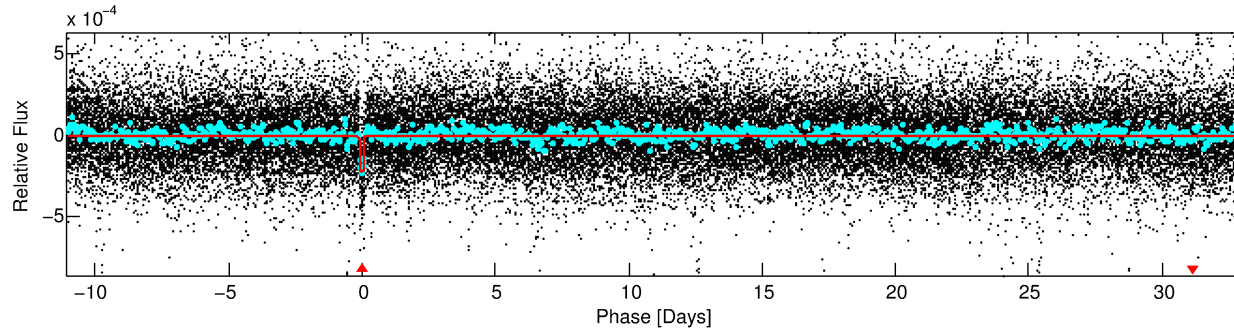
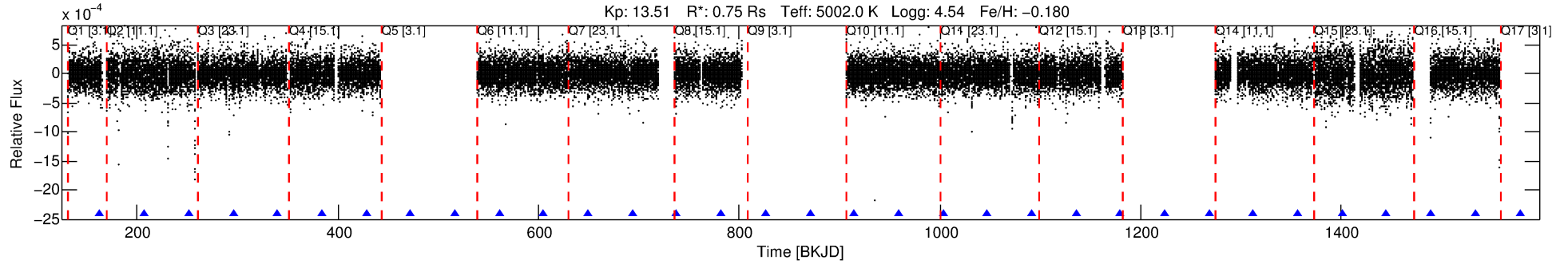
See http://exoplanetarchive.ipac.caltech.edu/docs/API_kepcandidate_columns.html#proj_disp_col for comment definitions.

Ephemeris Match Information For 006265665-01

No Significant Match Found

DV One-Page Summary

KIC: 6265665 Candidate: 1 of 1 Period: 44.202 d
KOI: K03436.01 Corr: 0.948



DV Fit Results:

Period = 44.20193 [0.00032] d
Epoch = 163.2105 [0.0057] BKJD
Rp/R* = 0.0148 [0.0085]
a/R* = 49.41 [101.30]
b = 0.72 [1.40]
Seff = 6.60 [1.21]
Teq = 409 [19] K
Rp = 1.22 [0.71] Re
a = 0.2195 [0.0201] AU
Ag = 1359.26 [1603.96] [0.85σ]
Teffp = 3837 [1130] K [3.03σ]

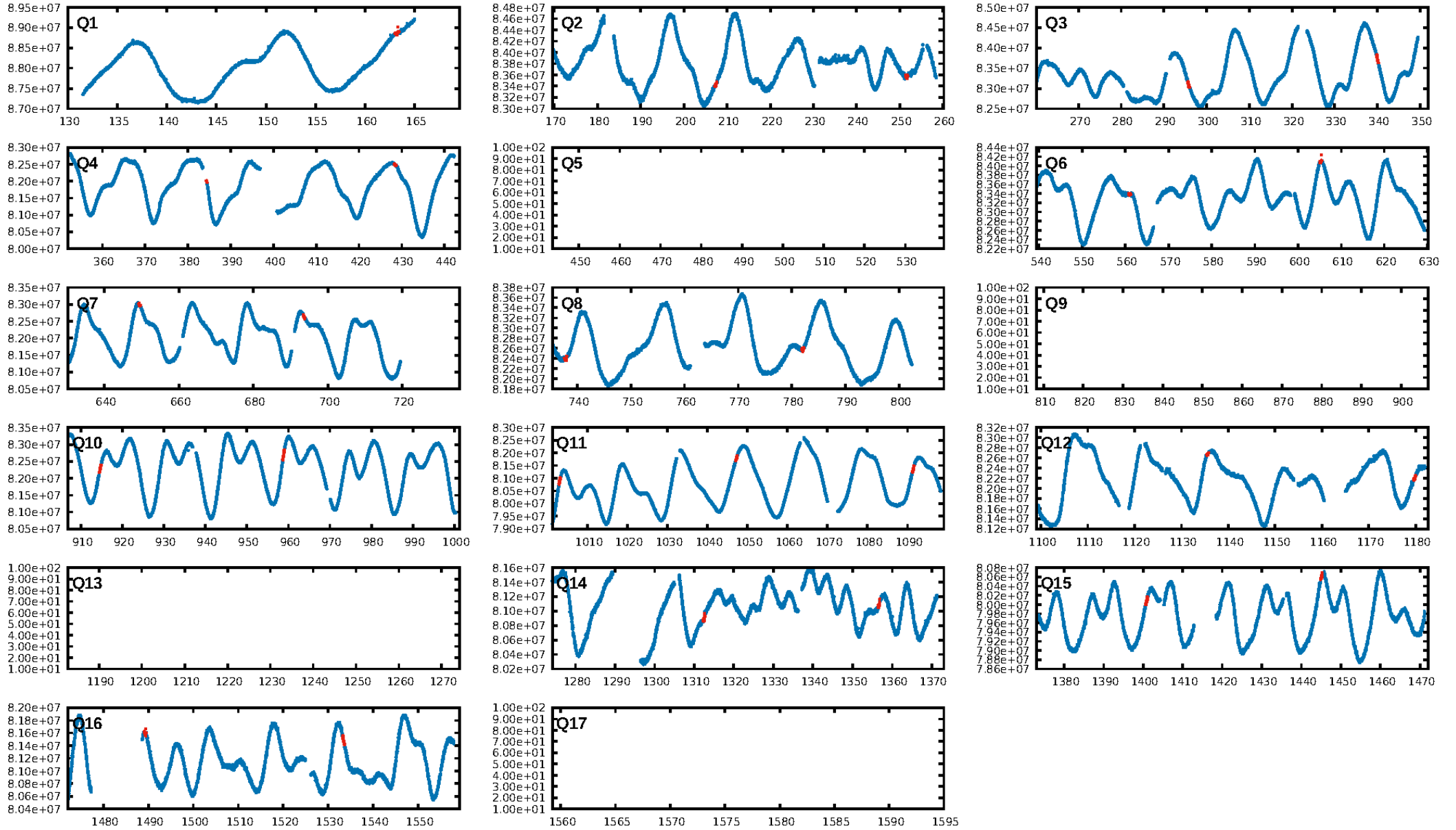
DV Diagnostic Results:

ShortPeriod-sig: N/A
LongPeriod-sig: N/A
ModelChiSquare2-sig: 85.3%
ModelChiSquareGof-sig: 100.0%
Bootstrap-pfa: 1.81e-26
RollingBand-fgt: 1.00 [25/25]
GhostDiagnostic-chr: -0.8405
Centroid-sig: 89.0%
Centroid-so: 0.312 arcsec [0.39σ]
OotOffset-rm: 1.240 arcsec [1.26σ]
KicOffset-rm: 0.780 arcsec [0.81σ]
OotOffset-st: 2/3/3/1 [9]
KicOffset-st: 2/3/3/1 [9]
DiffImageQuality-fgm: 0.67 [6/9]
DiffImageOverlap-fno: 1.00 [12/12]

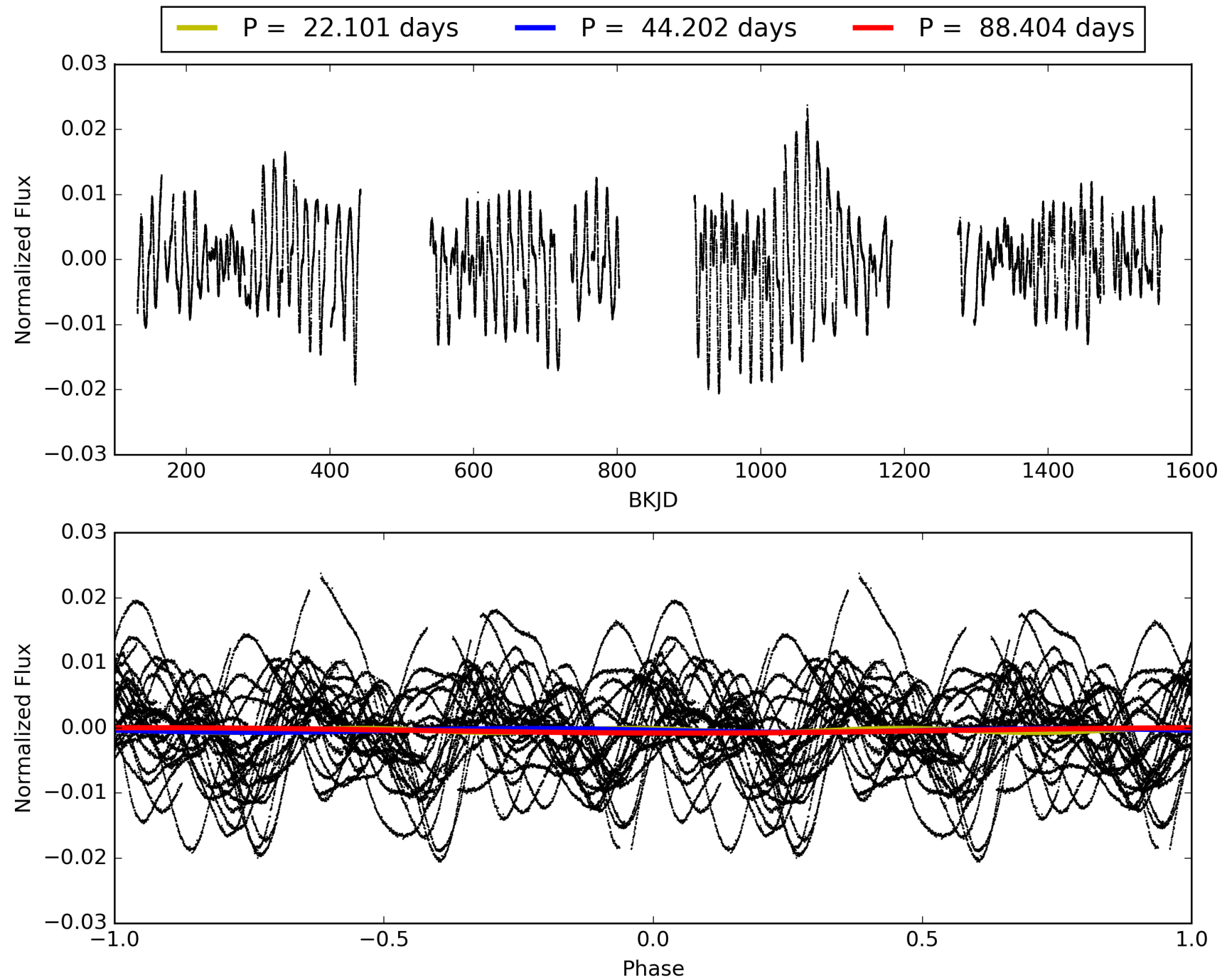
Software Revision: svn+ssh://murzim/repo/soc/tags/release/9.3.42@60958 -- Date Generated: 31-Jan-2016 22:29:18 Z

This Data Validation Report Summary was produced in the Kepler Science Operations Center Pipeline at NASA Ames Research Center

TCE 006265665-01, PDC Light Curves

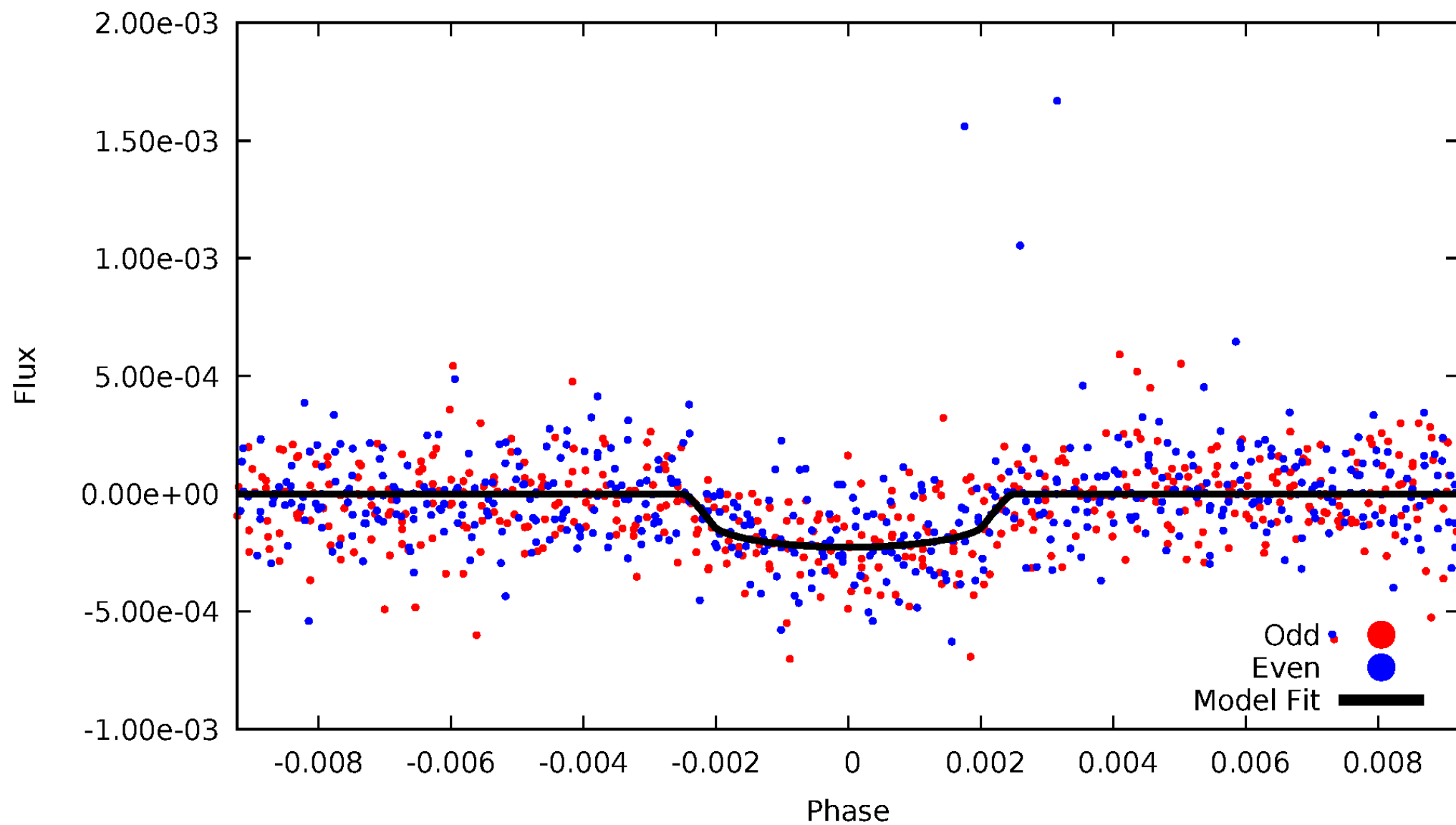


TCE 006265665-01



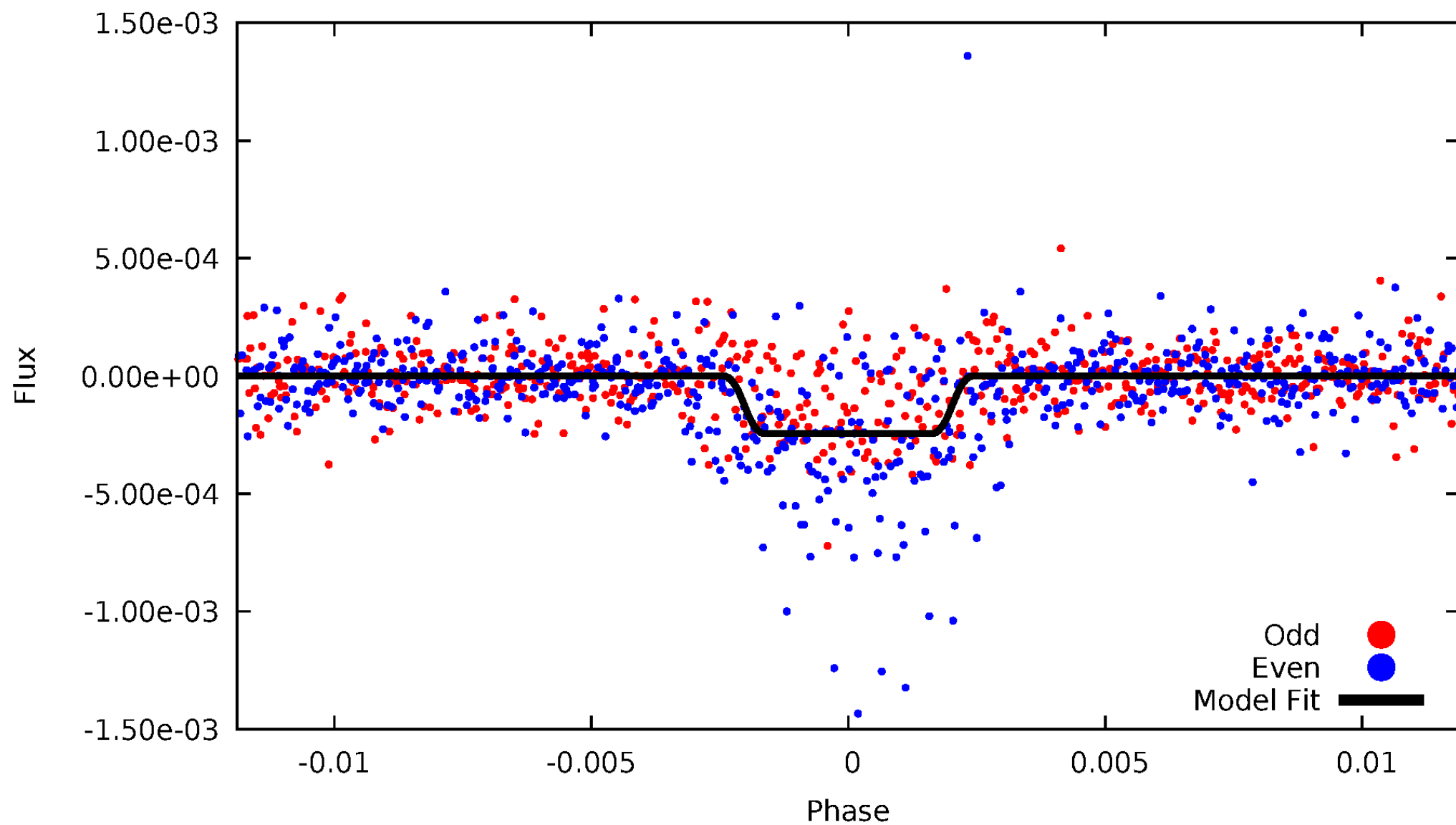
DV Odd/Even

TCE 006265665-01

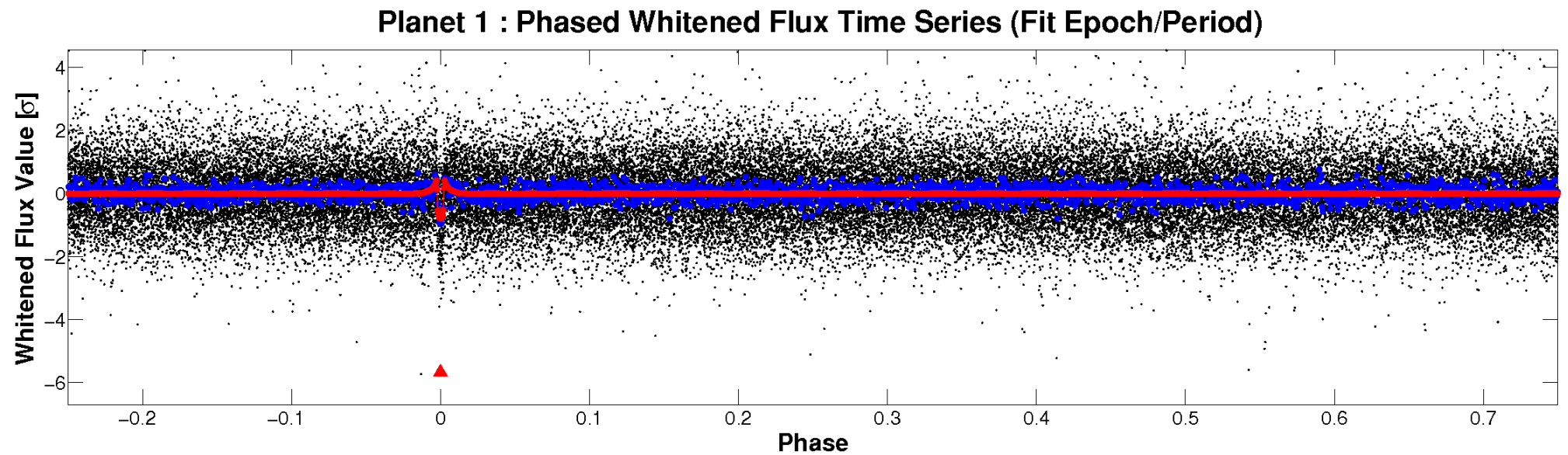
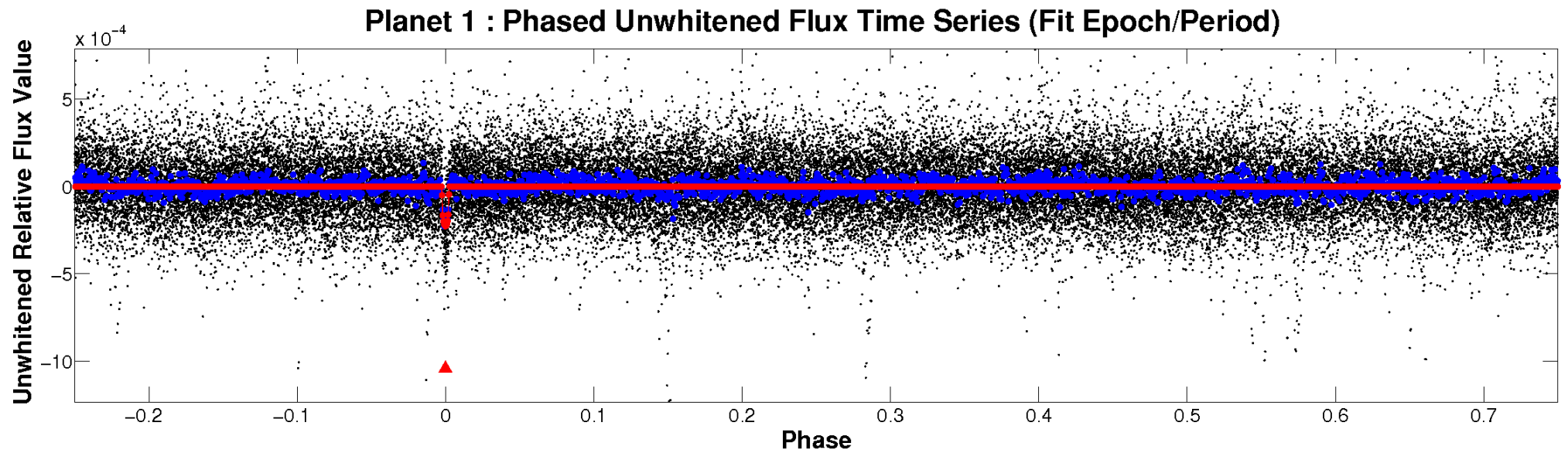


ALT Odd/Even

TCE 006265665-01

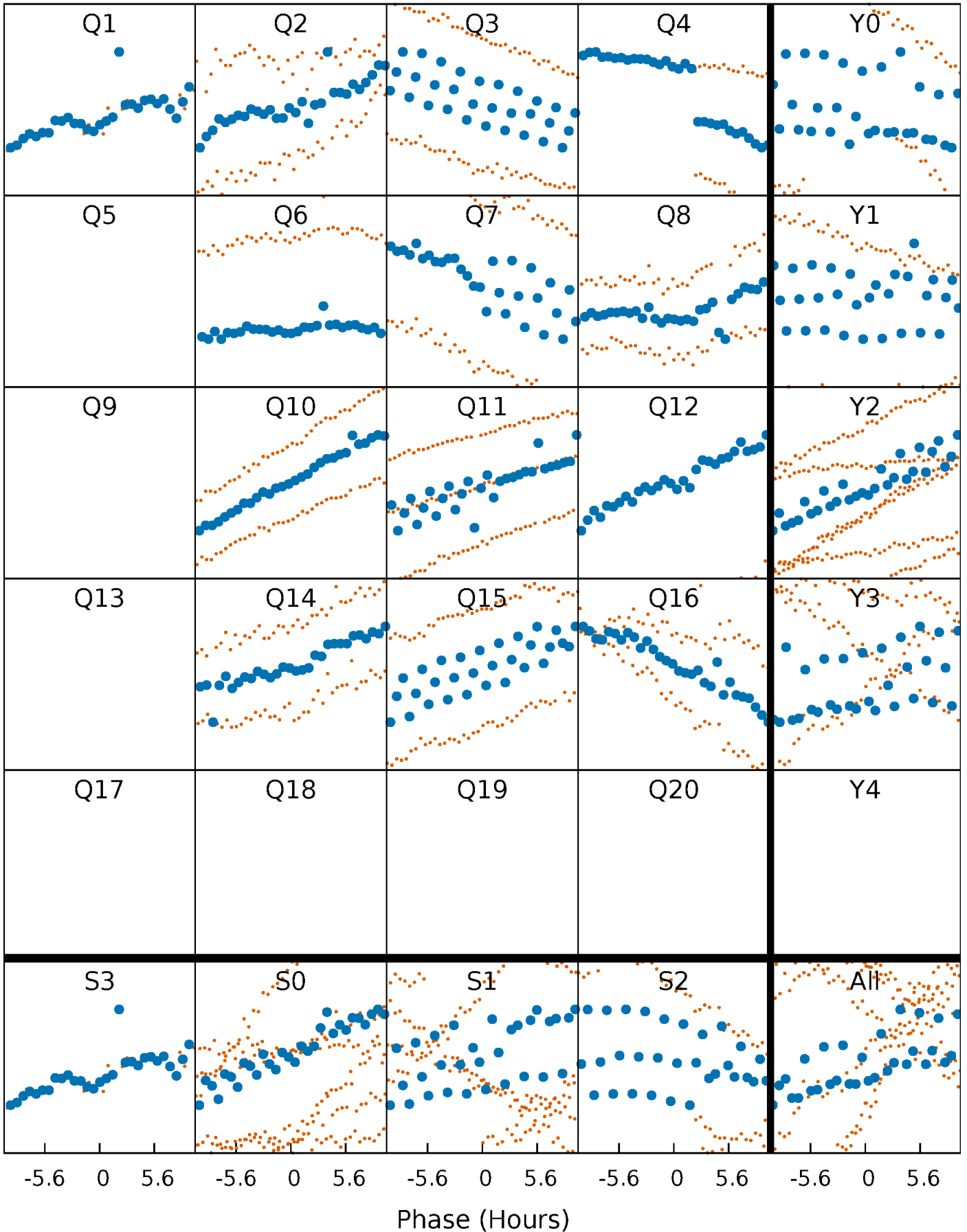


Non-Whitened Vs. Whitened Light Curve



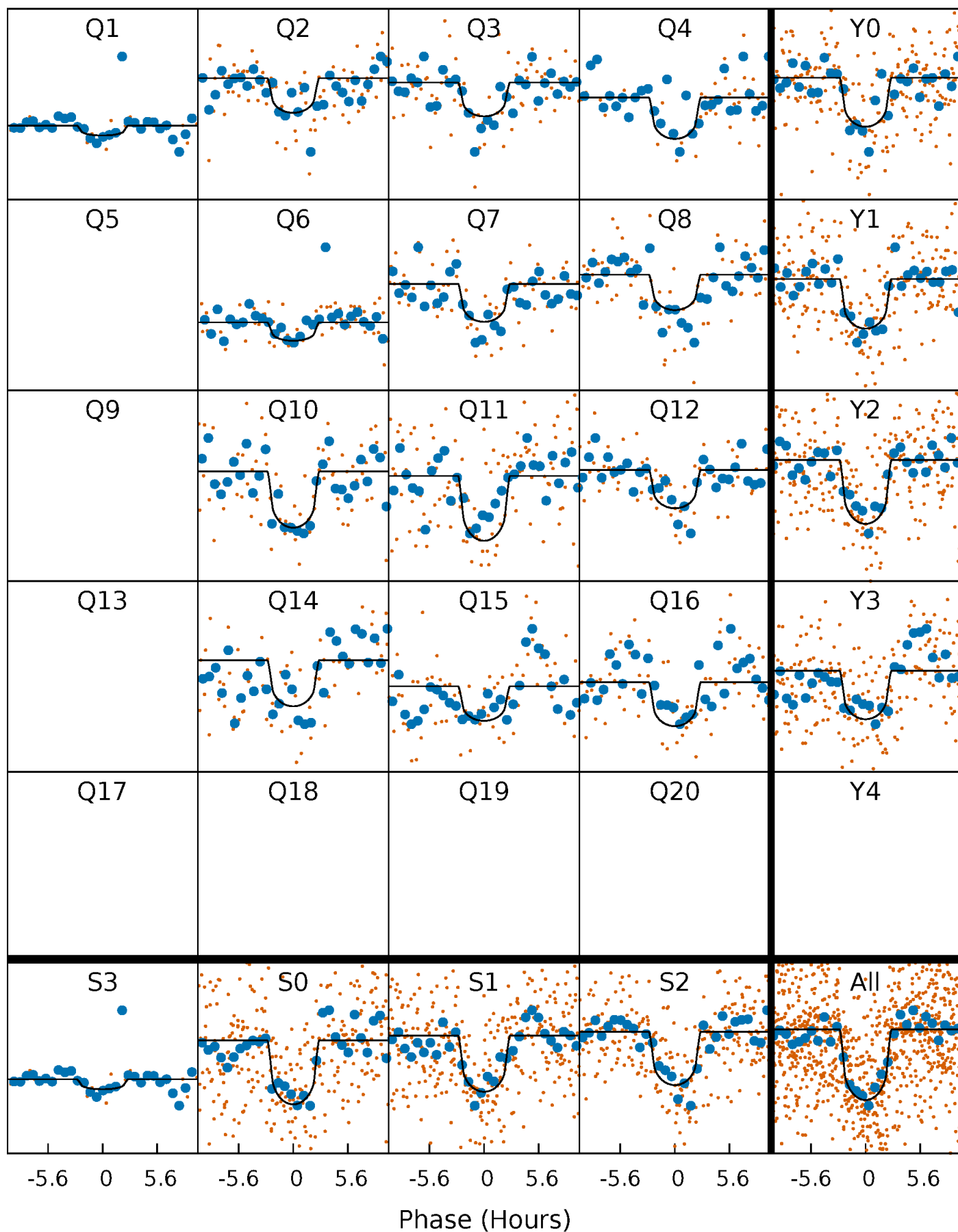
PDC Quarter-Phased Transit Curves

TCE 006265665-01 P= 44.201934 Days $T_0=163.210537$ (BKJD)



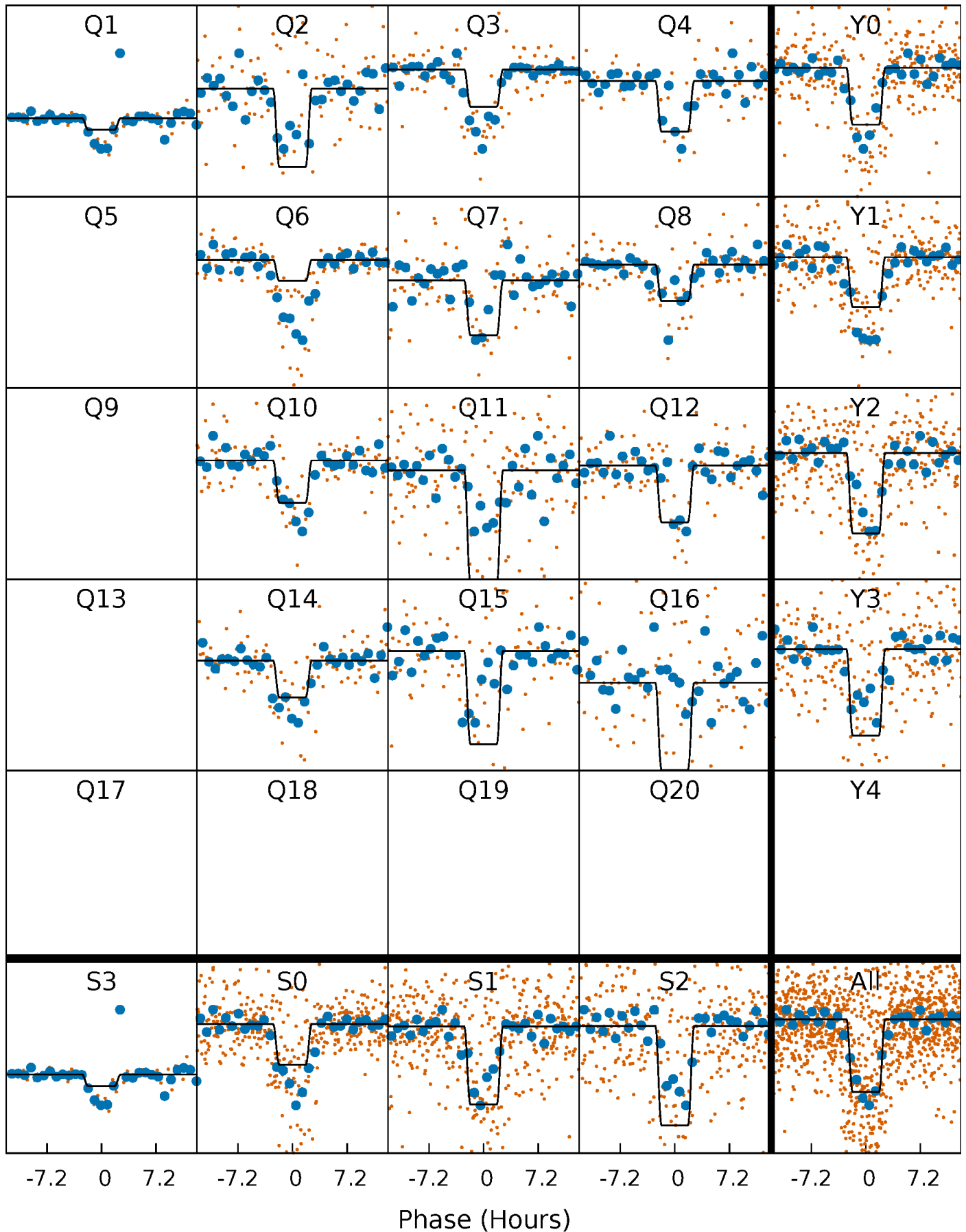
DV Quarter-Phased Transit Curves

TCE 006265665-01 P= 44.201934 Days $T_0=163.210537$ (BKJD)



Alt. Detrend Quarter-Phased Transit Curves

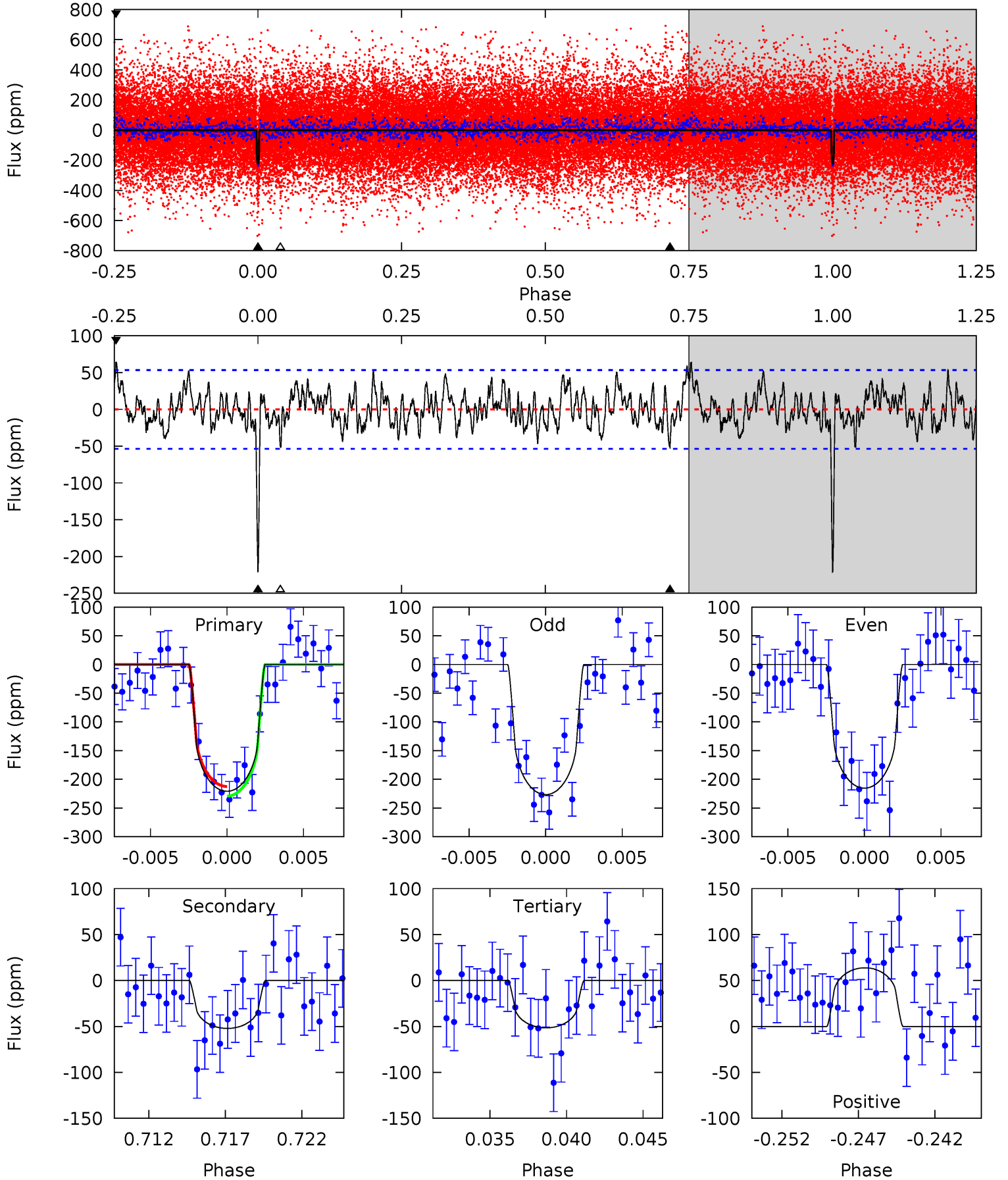
TCE 006265665-01 P= 44.203218 Days $T_0=163.185603$ (BKJD)



DV Model-Shift Uniqueness Test

006265665-01, P = 44.201934 Days, E = 119.008603 Days

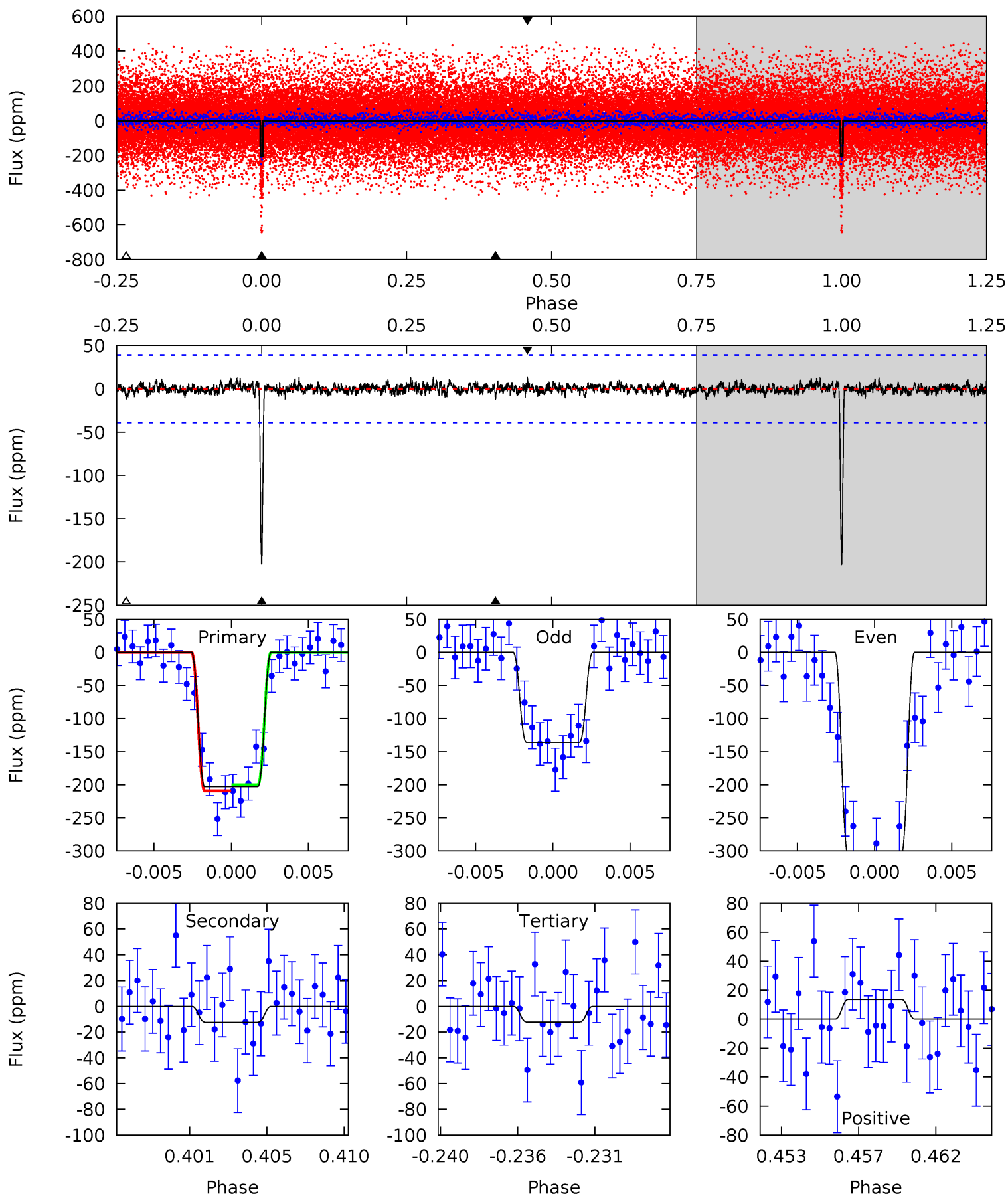
Pri	Sec	Ter	Pos	FA ₁	FA ₂	F _{Red}	Pri-Ter	Pri-Pos	Sec-Ter	Sec-Pos	Odd-Evn	DMM	Shape	TAT
21.3	5.03	4.97	6.15	5.16	2.80	1.93	16.3	15.1	0.06	-1.12	0.54	0.98	0.22	0.81



Alt Model-Shift Uniqueness Test

006265665-01, P = 44.203218 Days, E = 118.982385 Days

Pri	Sec	Ter	Pos	FA ₁	FA ₂	F _{Red}	Pri-Ter	Pri-Pos	Sec-Ter	Sec-Pos	Odd-Evn	DMM	Shape	TAT
26.9	1.63	1.61	1.80	5.17	2.83	0.50	25.2	25.1	0.02	-0.17	11.4	1.38	0.06	0.60



Stellar Parameters For KIC 006265665

	$T_{\text{eff}}(K)$	$\log(g)$	[Fe/H]	$R (R_{\odot})$	$M(M_{\odot})$	$p_{\star} (\text{g}\cdot\text{cm}^{-3})$
	5002^{+151}_{-136}	$4.543^{+0.077}_{-0.063}$	$-0.180^{+0.300}_{-0.300}$	$0.753^{+0.079}_{-0.079}$	$0.723^{+0.100}_{-0.050}$	$2.383^{+0.760}_{-0.482}$
	+3%/-3%	+2%/-1%	+167%/-167%	+10%/-10%	+14%/-7%	+32%/-20%
Source	PHO1	KIC0	KIC0	DSEP		

KIC = Kepler Input Catalog; PHO = Photometry; SPE = Spectroscopy; AST = Asteroseismology
 TRA = Transits; DESP = Dartmouth Models; MULT = Multiple Models

Secondary Eclipse Parameters for KIC 006265665-01 / KOI 3436.01

Detrend	Depth (ppm)	$R_p (R_{\oplus})$	$T_{max} (K)$	$T_{obs} (K)$	A_{obs}
DV	-52 ± 10	$1.27^{+0.69}_{-0.66}$	571^{+22}_{-19}	3758^{+1174}_{-511}	872^{+2919}_{-529}
Alt.	-12 ± 8	$1.38^{+0.71}_{-0.67}$	571^{+22}_{-22}	2907^{+692}_{-425}	158^{+515}_{-112}

T_{max} = Theoretical Maximum Planetary Temperature

T_{obs} = Observed Planetary Temperature (Assuming $A=0.3$)

A_{obs} = Observed Albedo (Assuming $T=0$)

If a secondary eclipse is present, the system is likely an EB if $T_{obs} \gg T_{max}$ AND $A_{obs} \gg 1.0$

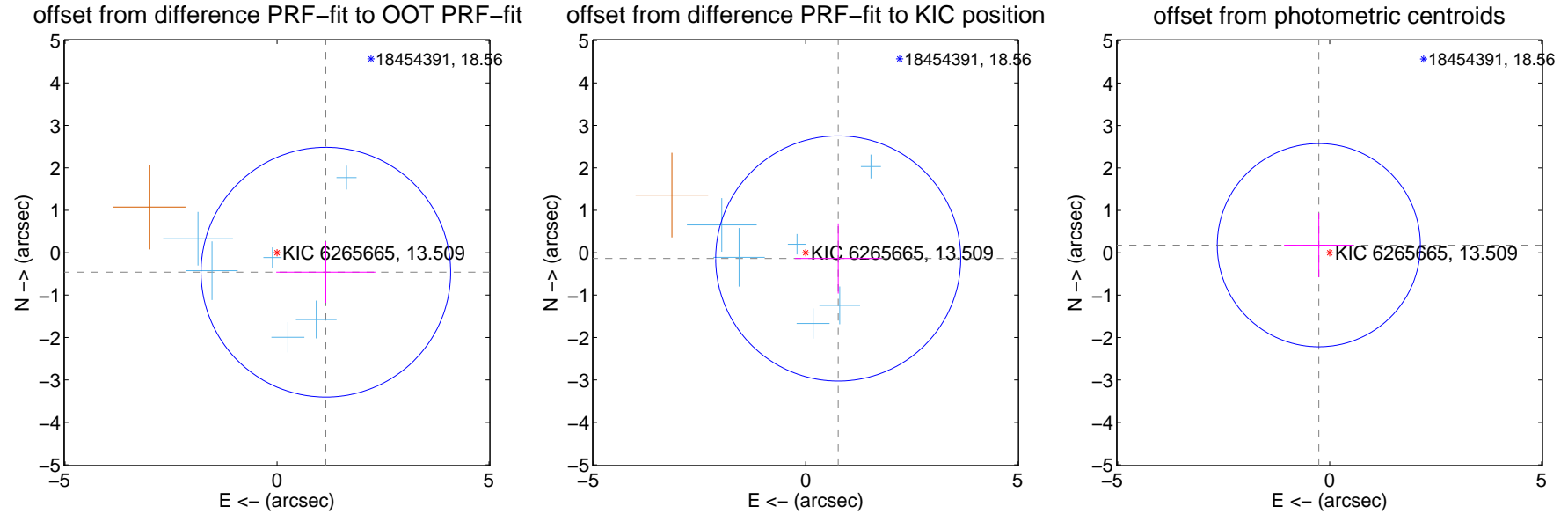
DV Centroid Data

Supplemental centroid analysis for 006265665-01. Kepler magnitude: 13.51. Transit SNR 11.76

There are 6 quarters with good PRF difference image offsets

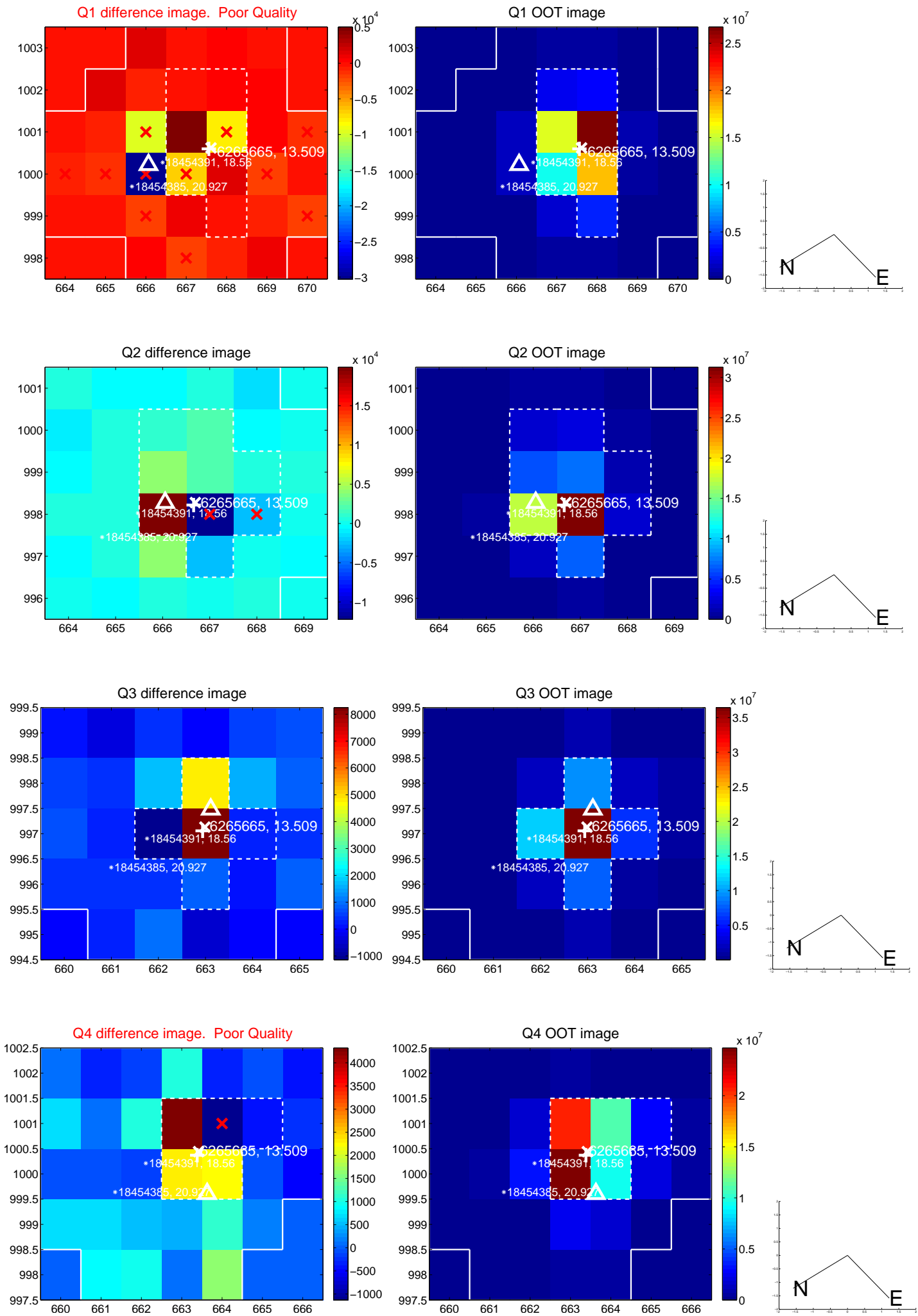
The direct PRF centroid is offset from the target star catalog position by about 0.34 arcsec

	Distance in arcsec	Distance / σ	Δ RA	Δ Dec
PRF-fit source offset from OOT	1.240 ± 0.981	1.26	-1.152 ± 1.170	-0.461 ± 0.721
PRF-fit source offset from KIC position	0.780 ± 0.963	0.81	-0.768 ± 1.021	-0.136 ± 0.828
photometric centroid source offset	0.31 ± 0.80	0.39	0.26 ± 0.82	0.18 ± 0.76

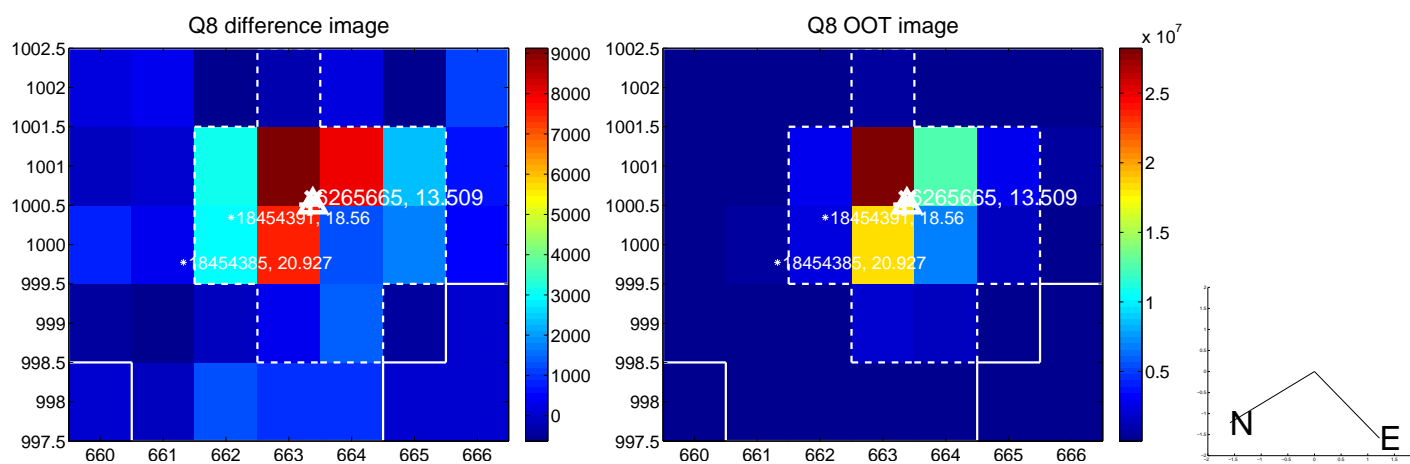
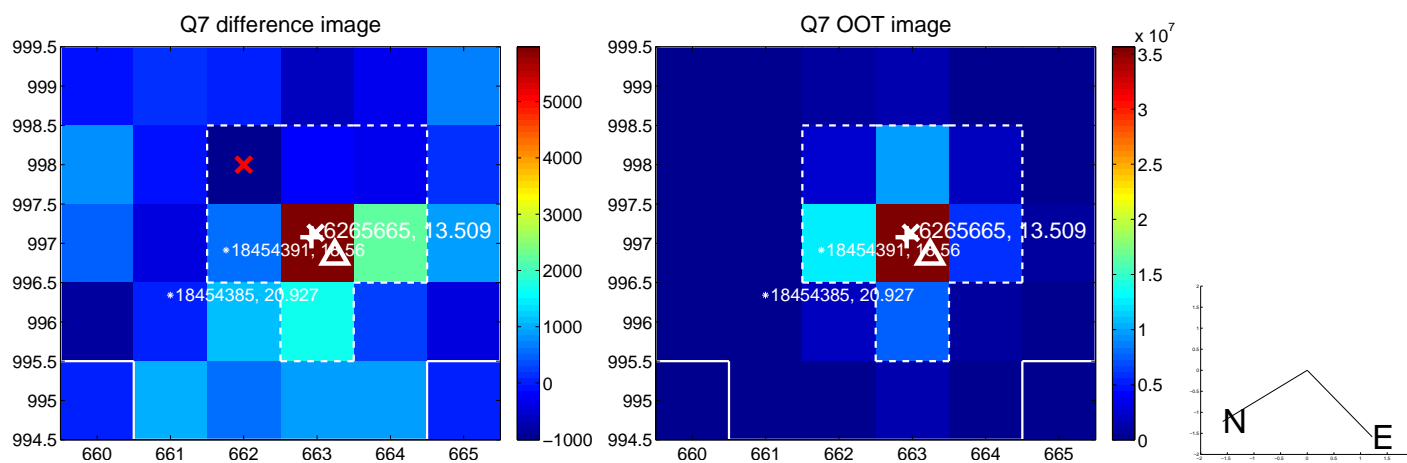
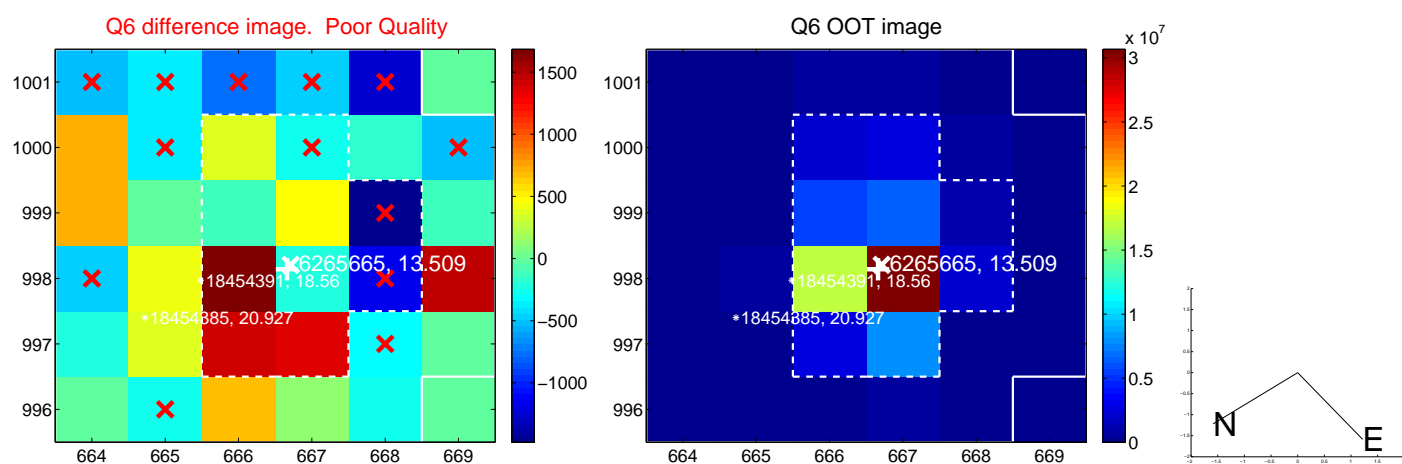
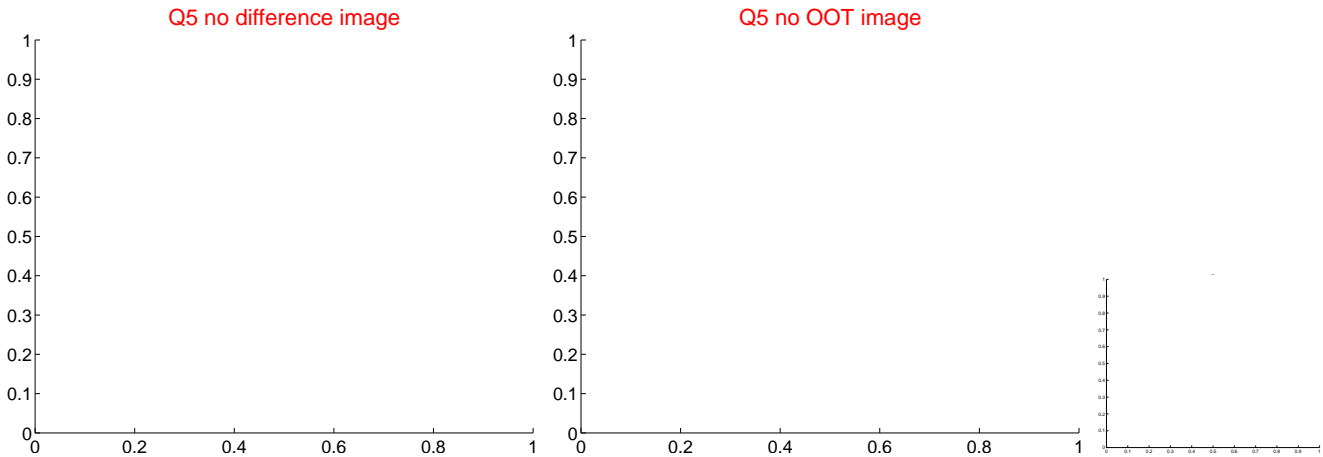


Centroid source offsets from the target star reconstructed from PRF and photometric centroids. **Sky blue crosses: good quarterly centroid offsets**; **Vermillion crosses: bad quarterly centroid offsets**; magenta cross: average over quarters. Length of the crosses: one- σ uncertainty. Blue circle: three- σ . Red *: target star. Blue *: Other stars. Text next to a star gives its KIC ID and kepmag. KIC IDs > 15,000,000 are from the UKIRT catalog.

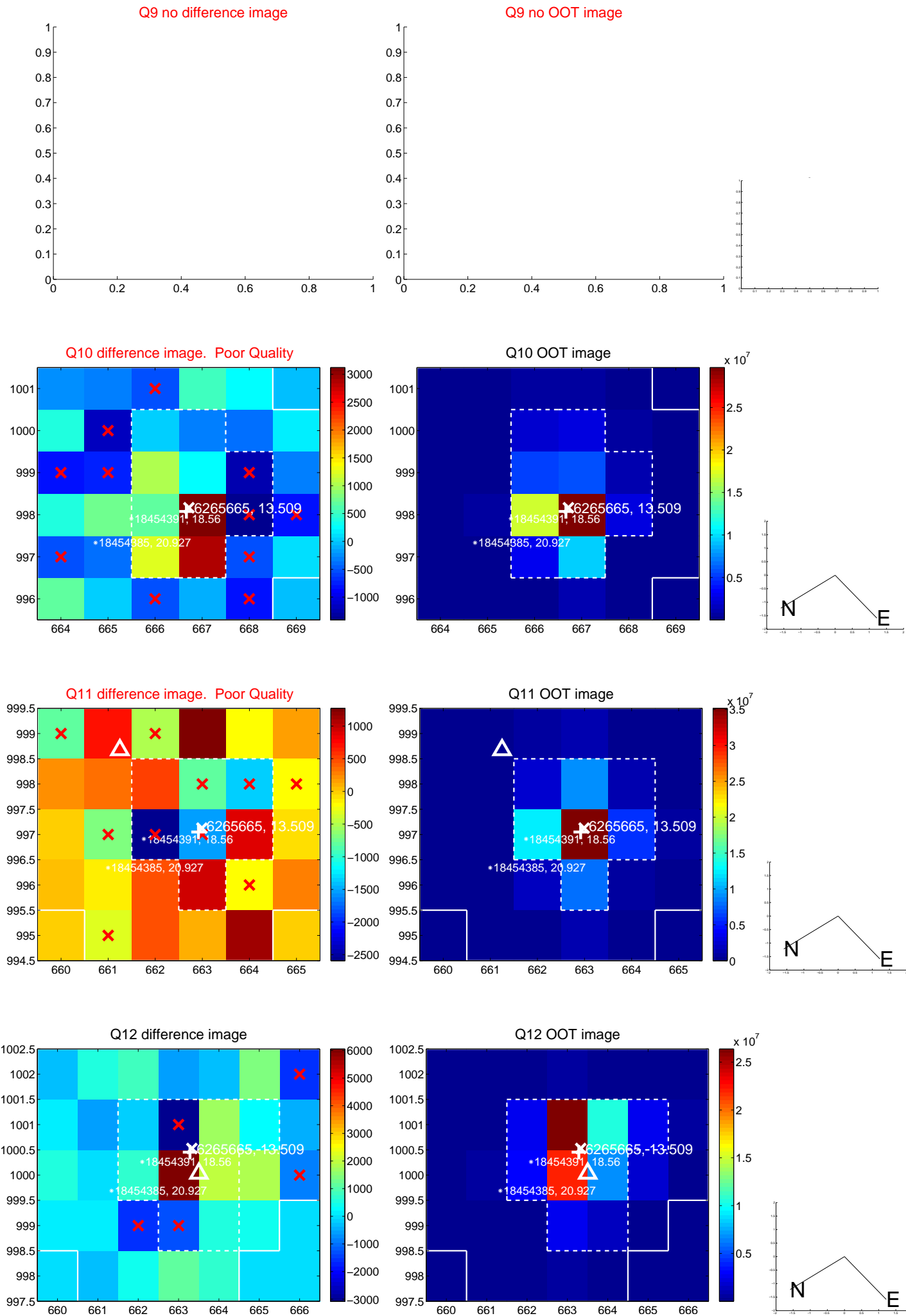
white \times : KIC target position; +: OOT centroid; \triangle : difference centroid. red \times : large negative pixel value.



white \times : KIC target position; $+$: OOT centroid; \triangle : difference centroid. red \times : large negative pixel value



white \times : KIC target position; +: OOT centroid; \triangle : difference centroid. red \times : large negative pixel value.



white \times : KIC target position; $+$: OOT centroid; \triangle : difference centroid. red \times : large negative pixel value.

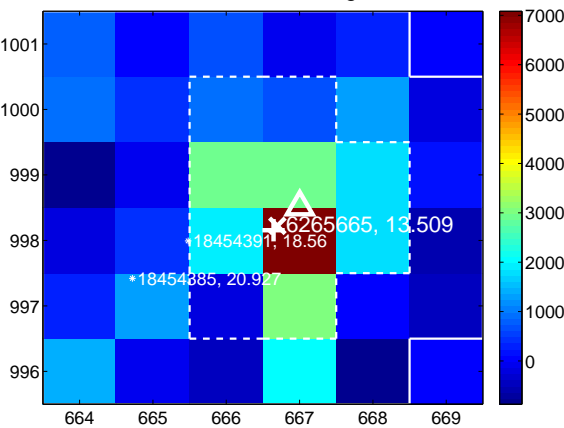
Q13 no difference image



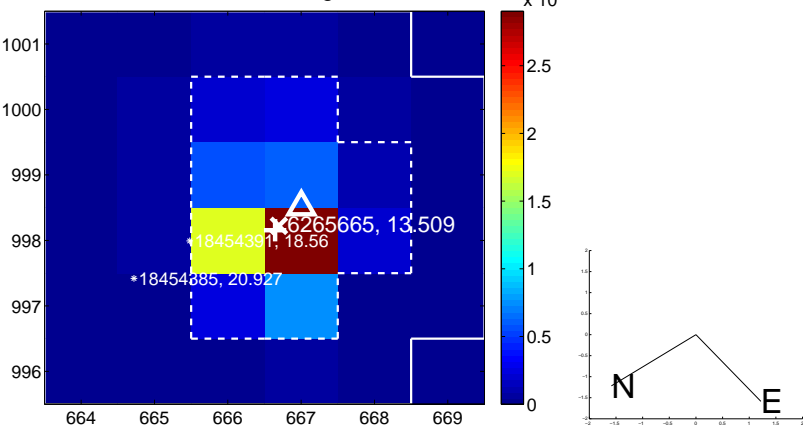
Q13 no OOT image



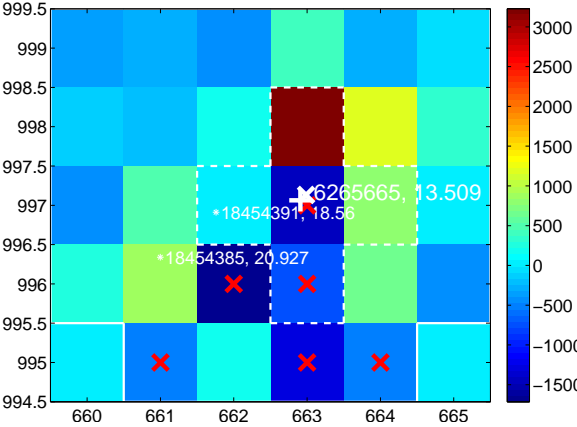
Q14 difference image



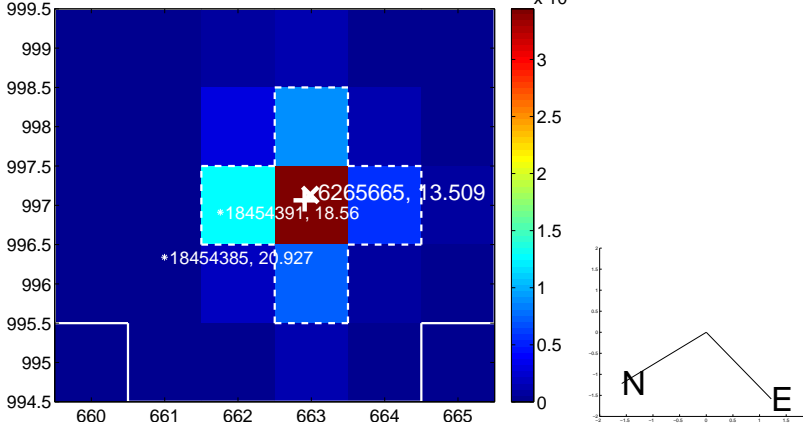
Q14 OOT image



Q15 difference image. Poor Quality



Q15 OOT image



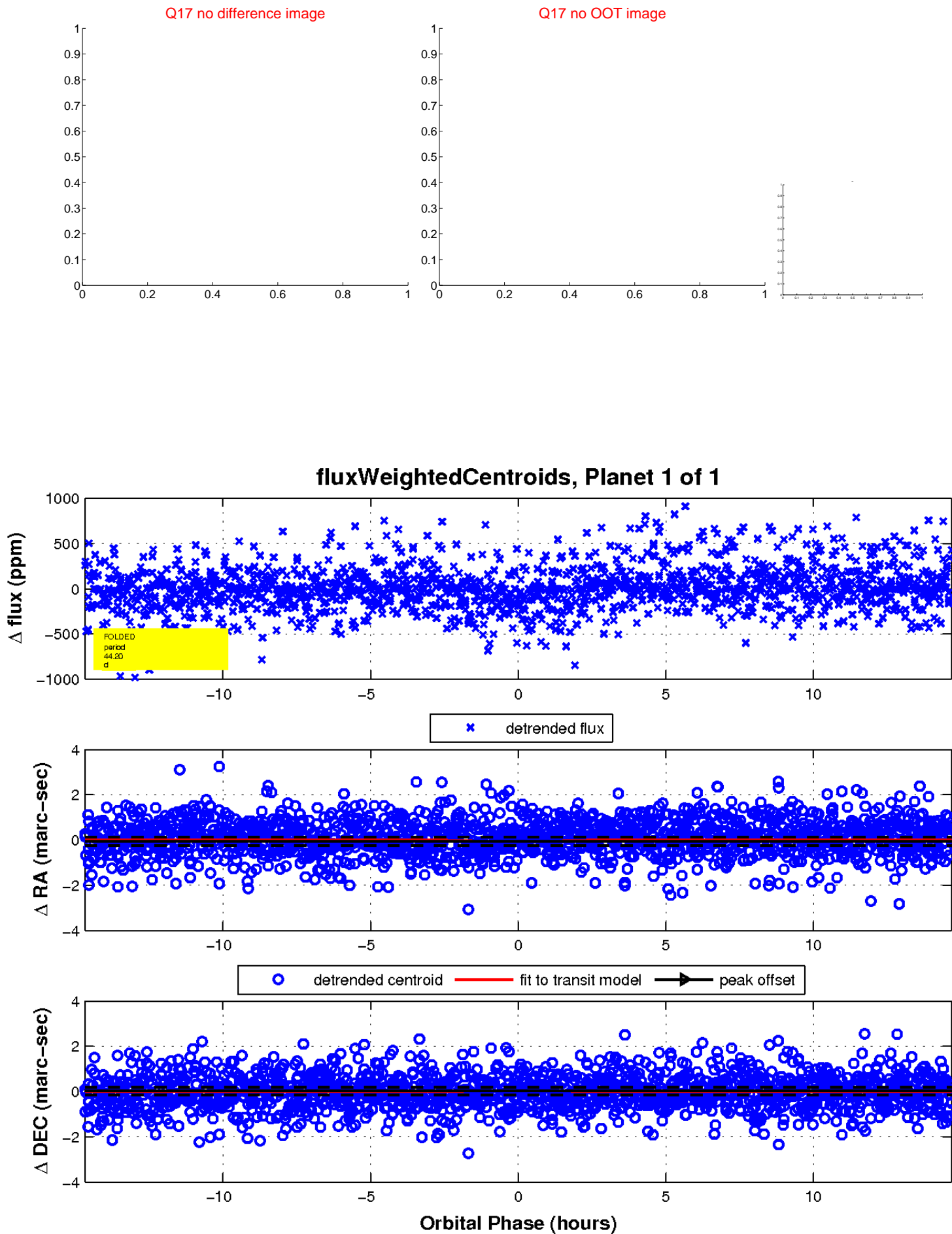
Q16 no difference image



Q16 no OOT image



white \times : KIC target position; $+$: OOT centroid; \triangle : difference centroid. red \times : large negative pixel value.



UKIRT Image

Declination

