

# KIC 006205897

## Q1-17 DR25 TCE Parameters

TCE	Run Type	KOI?	Period (Days)	Epoch (BKJD)	Depth (ppm)	Duration (Hours)	MES	SNR	$R_{\star}$ ( $R_{\odot}$ )	$T_{\star}$ (K)	$R_p$ ( $R_{\oplus}$ )	$S_p$ ( $S_{\oplus}$ )
006205897-01	OBS	1967.01	4.417705	133.959086	276.0	1.966	29.3	34.4	0.66	4766	1.35	92.19

## Robovetter Results

TCE	Run Type	Disp	Score	N	S	C	E	Comments
006205897-01	OBS	PC	1.00	0	0	0	0	NO_COMMENT

**Notes:** OBS = Observed. INJ = Injected. INV = Inverted. SCR = Scrambled.

N = Not Transit-Like. S = Stellar Eclipse. C = Centroid Offset. E = Ephemeris Match.

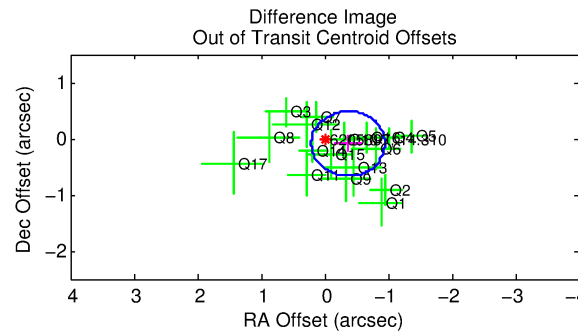
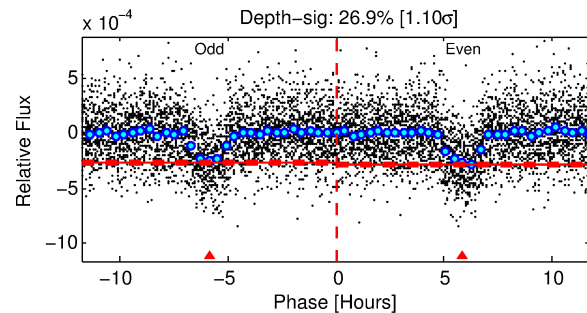
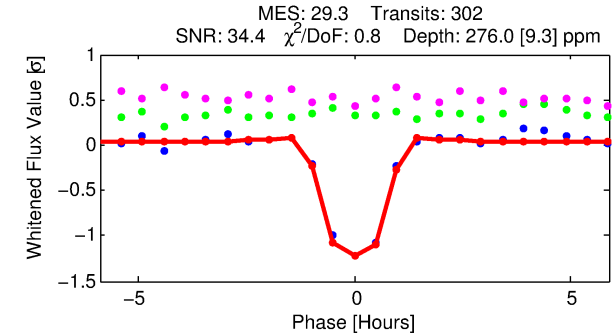
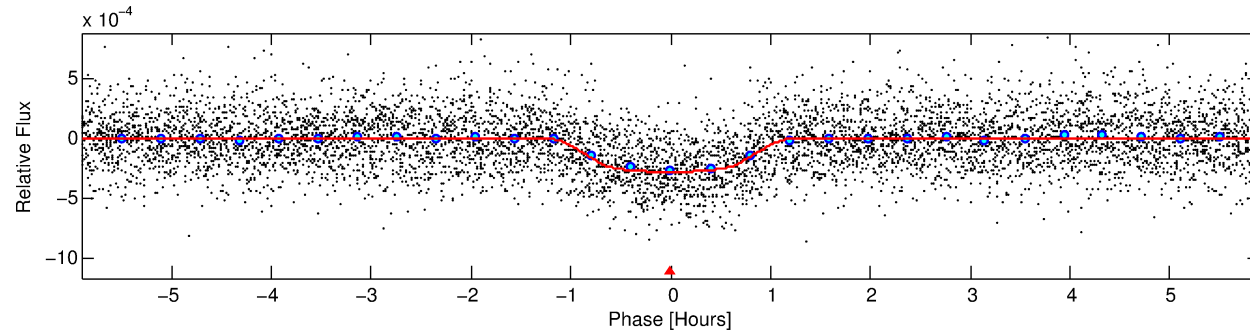
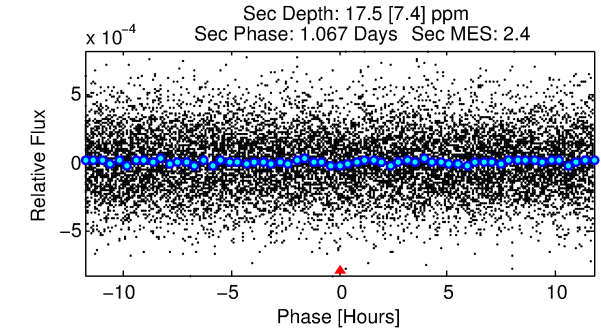
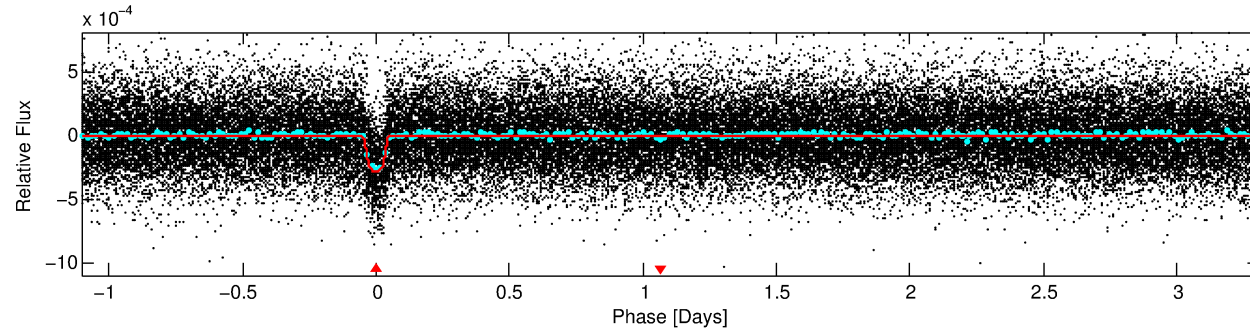
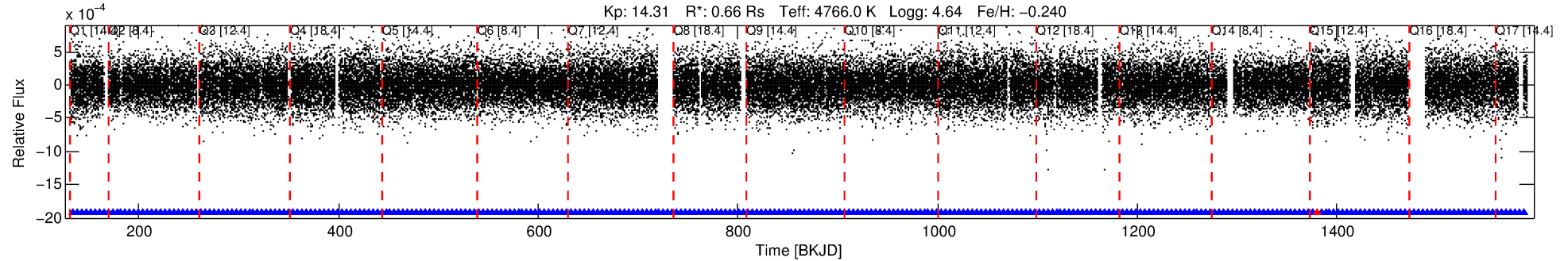
See [http://exoplanetarchive.ipac.caltech.edu/docs/API\\_kepcandidate\\_columns.html#proj\\_disp\\_col](http://exoplanetarchive.ipac.caltech.edu/docs/API_kepcandidate_columns.html#proj_disp_col) for comment definitions.

## Ephemeris Match Information For 006205897-01

No Significant Match Found

# DV One-Page Summary

KIC: 6205897 Candidate: 1 of 1 Period: 4.418 d  
KOI: K01967.01 Corr: 0.985



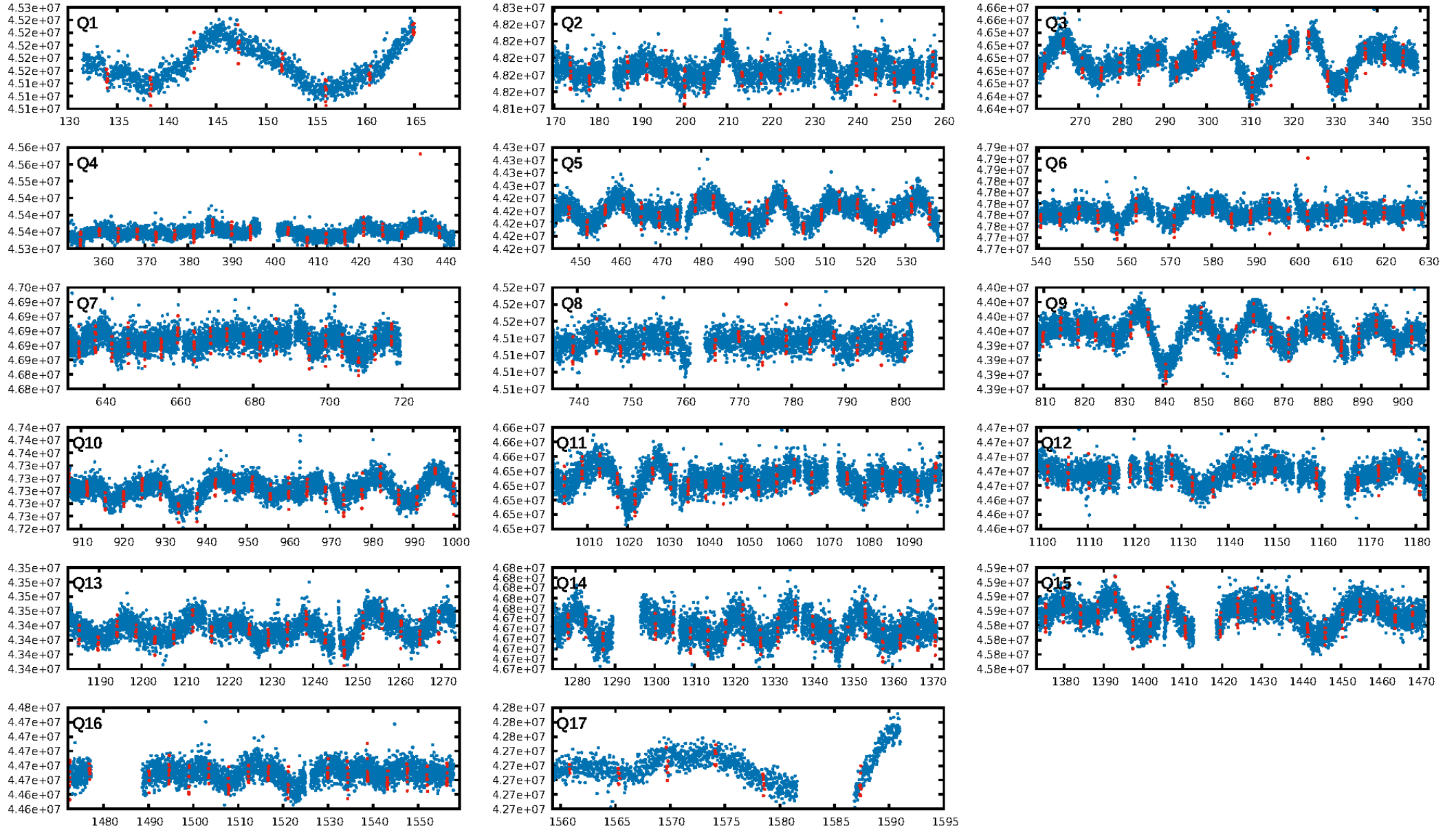
## DV Fit Results:

Period = 4.41771 [0.00001] d  
Epoch = 133.9591 [0.0011] BKJD  
Rp/R\* = 0.0186 [0.0052]  
a/R\* = 8.37 [8.70]  
b = 0.90 [0.24]  
Seff = 92.19 [8.81]  
Teq = 790 [19] K  
Rp = 1.35 [0.38] Re  
a = 0.0470 [0.0022] AU  
Ag = 11.76 [8.24] [1.31σ]  
Teffp = 2262 [396] K [3.72σ]

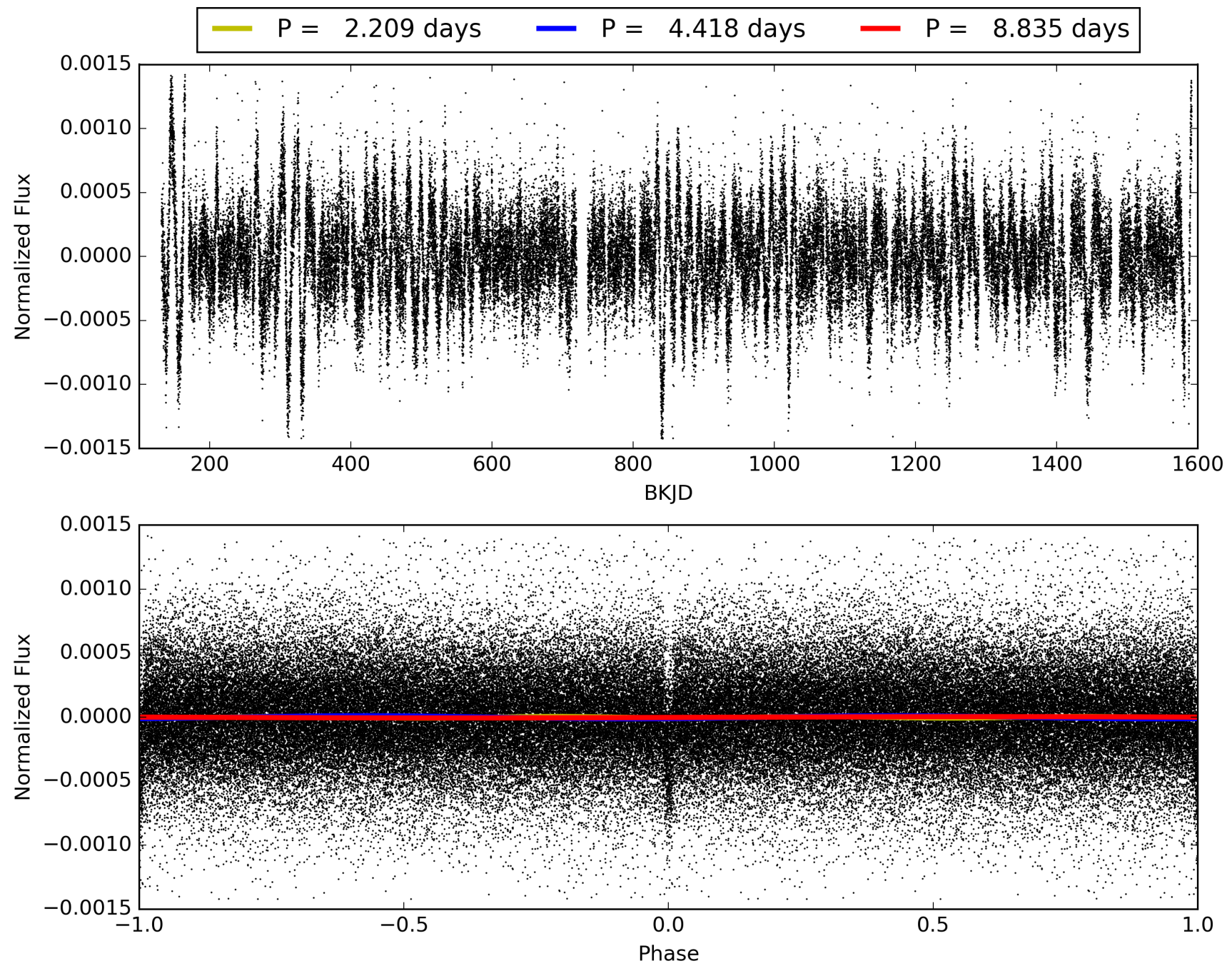
## DV Diagnostic Results:

ShortPeriod-sig: N/A  
LongPeriod-sig: N/A  
ModelChiSquare2-sig: N/A  
ModelChiSquareGof-sig: N/A  
Bootstrap-pfa: 3.76e-182  
RollingBand-fgt: 1.00 [287/288]  
GhostDiagnostic-chr: 7.412  
Centroid-sig: 1.8%  
Centroid-so: 0.872 arcsec [2.15σ]  
OotOffset-rm: 0.379 arcsec [1.97σ]  
OotOffset-st: 4/4/4/5 [17]  
KicOffset-rm: 0.598 arcsec [3.05σ]  
KicOffset-st: 4/4/4/5 [17]  
DiffImageQuality-fgm: 1.00 [17/17]  
DiffImageOverlap-fno: 1.00 [17/17]

# TCE 006205897-01, PDC Light Curves

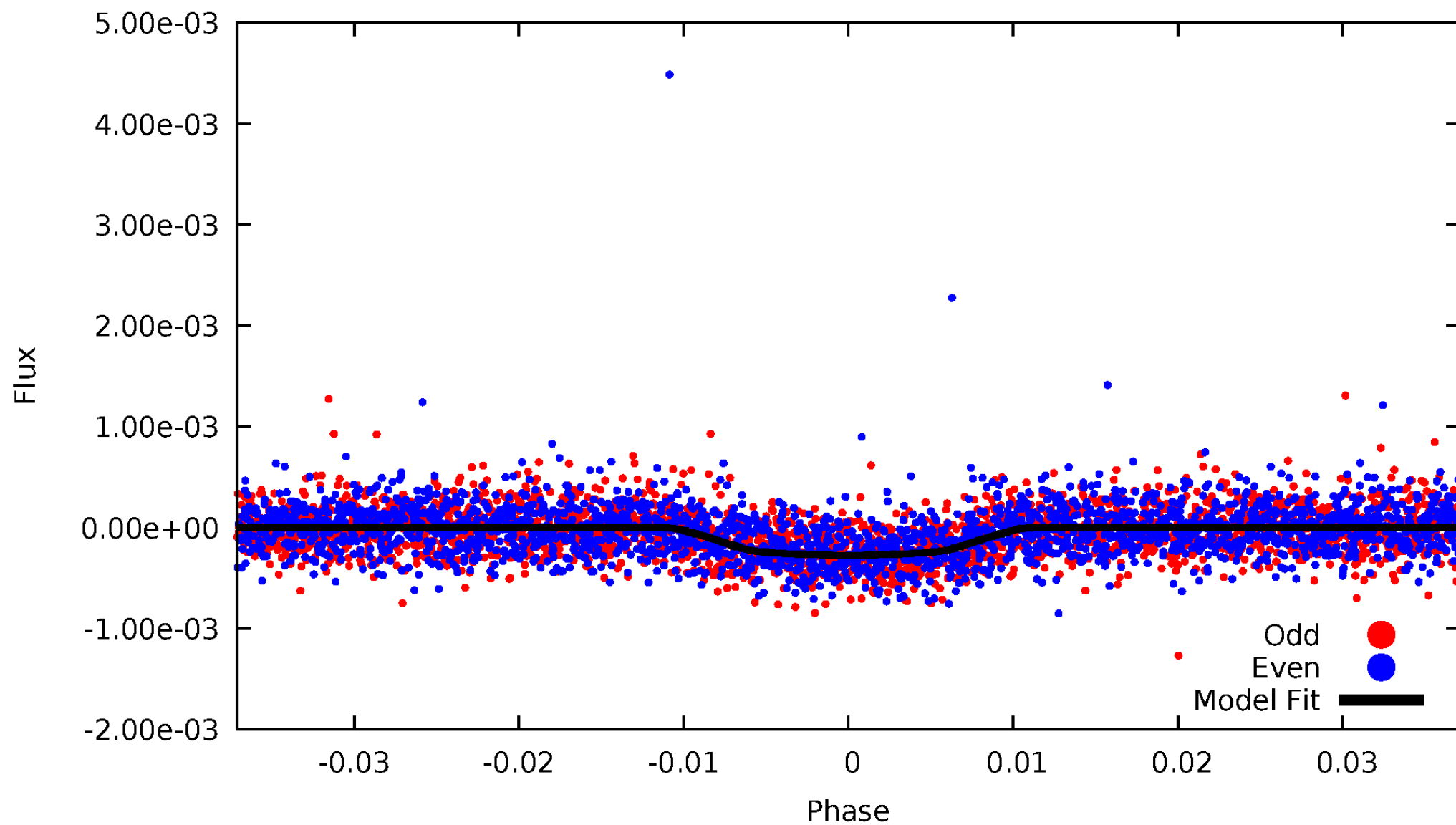


TCE 006205897-01



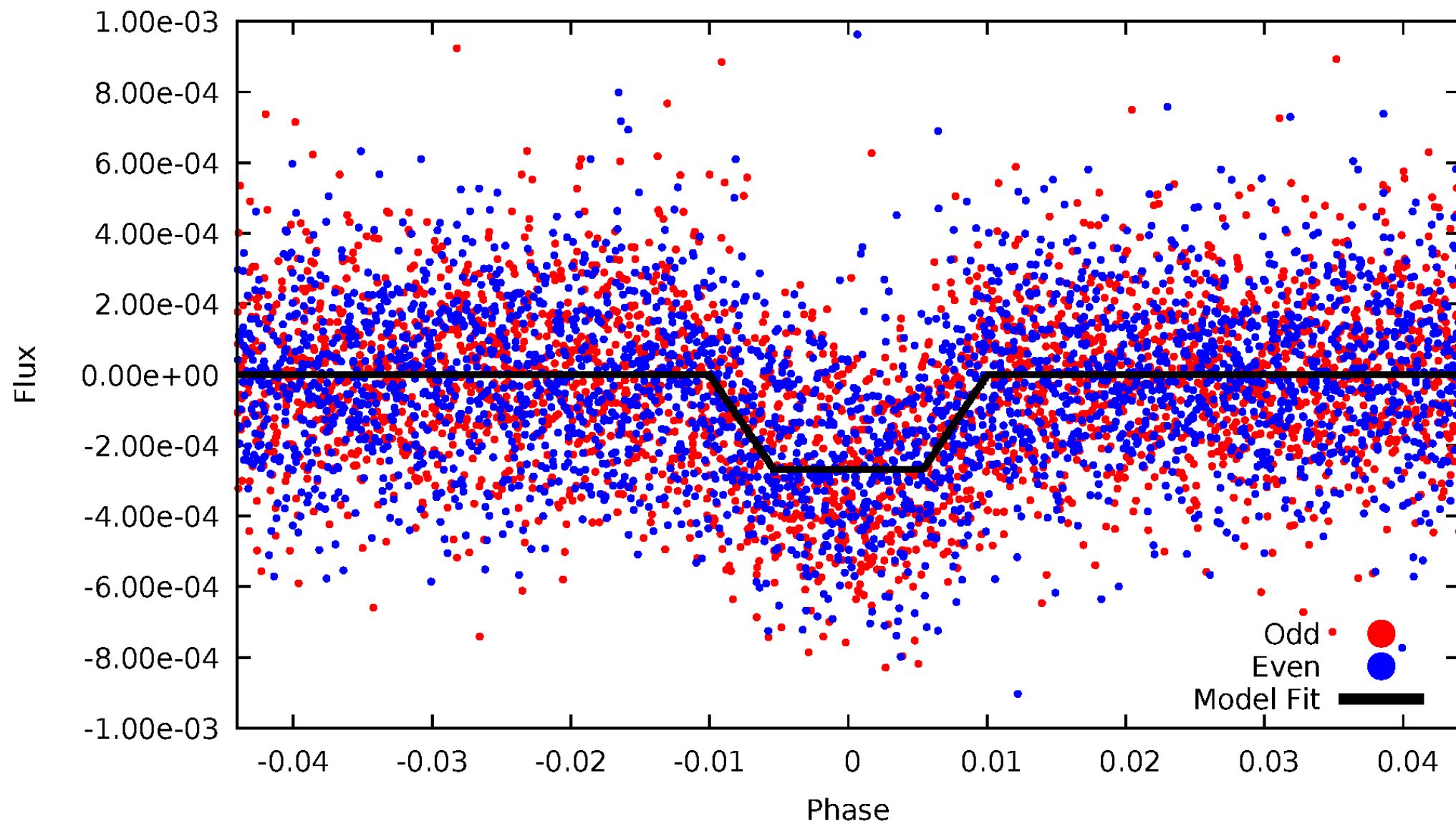
# DV Odd/Even

TCE 006205897-01



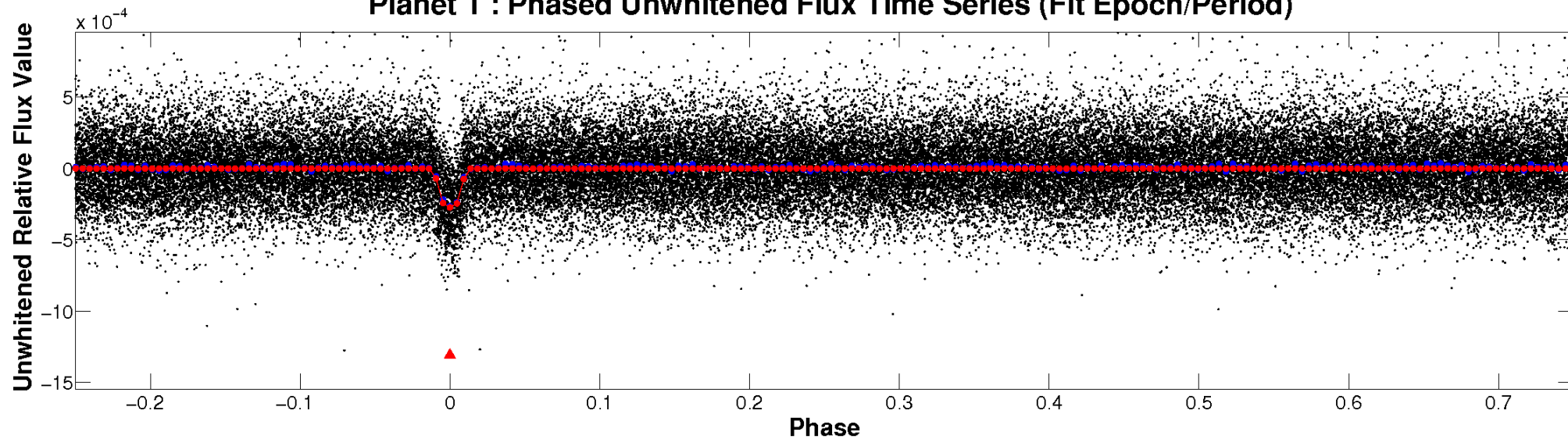
# ALT Odd/Even

TCE 006205897-01

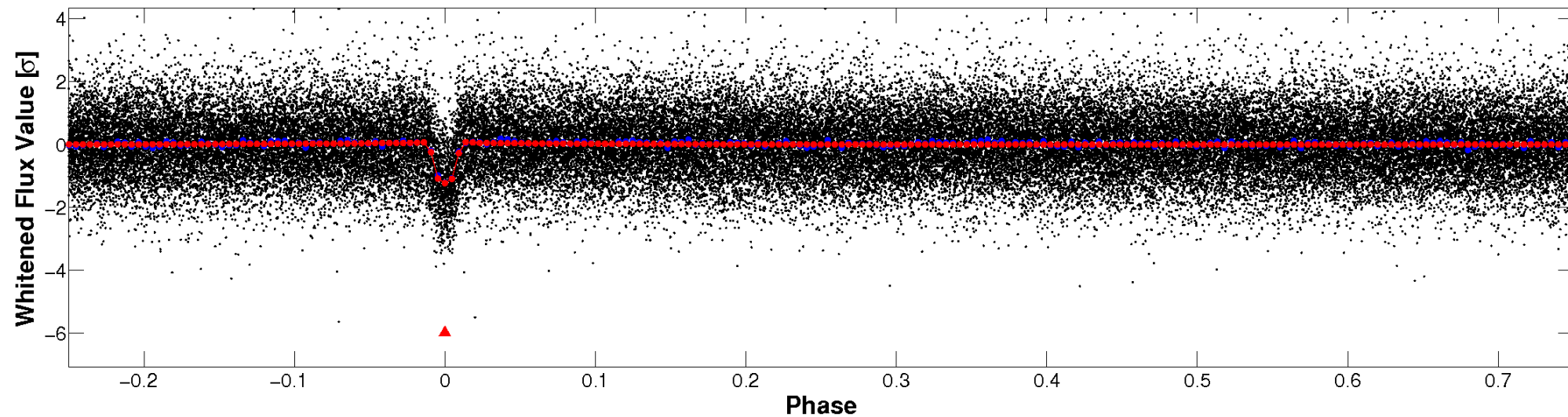


# Non-Whitened Vs. Whitened Light Curve

**Planet 1 : Phased Unwhitened Flux Time Series (Fit Epoch/Period)**

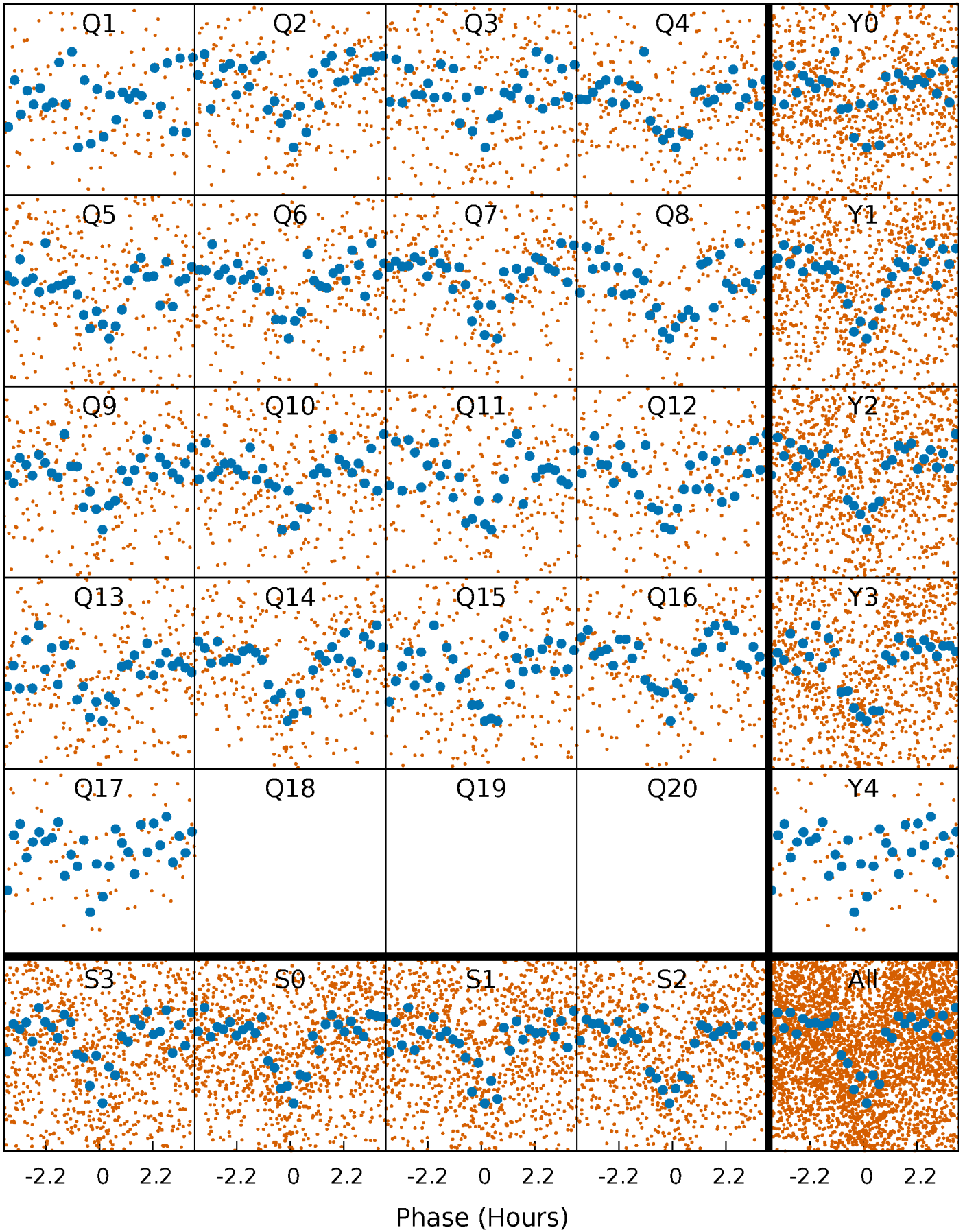


**Planet 1 : Phased Whitened Flux Time Series (Fit Epoch/Period)**



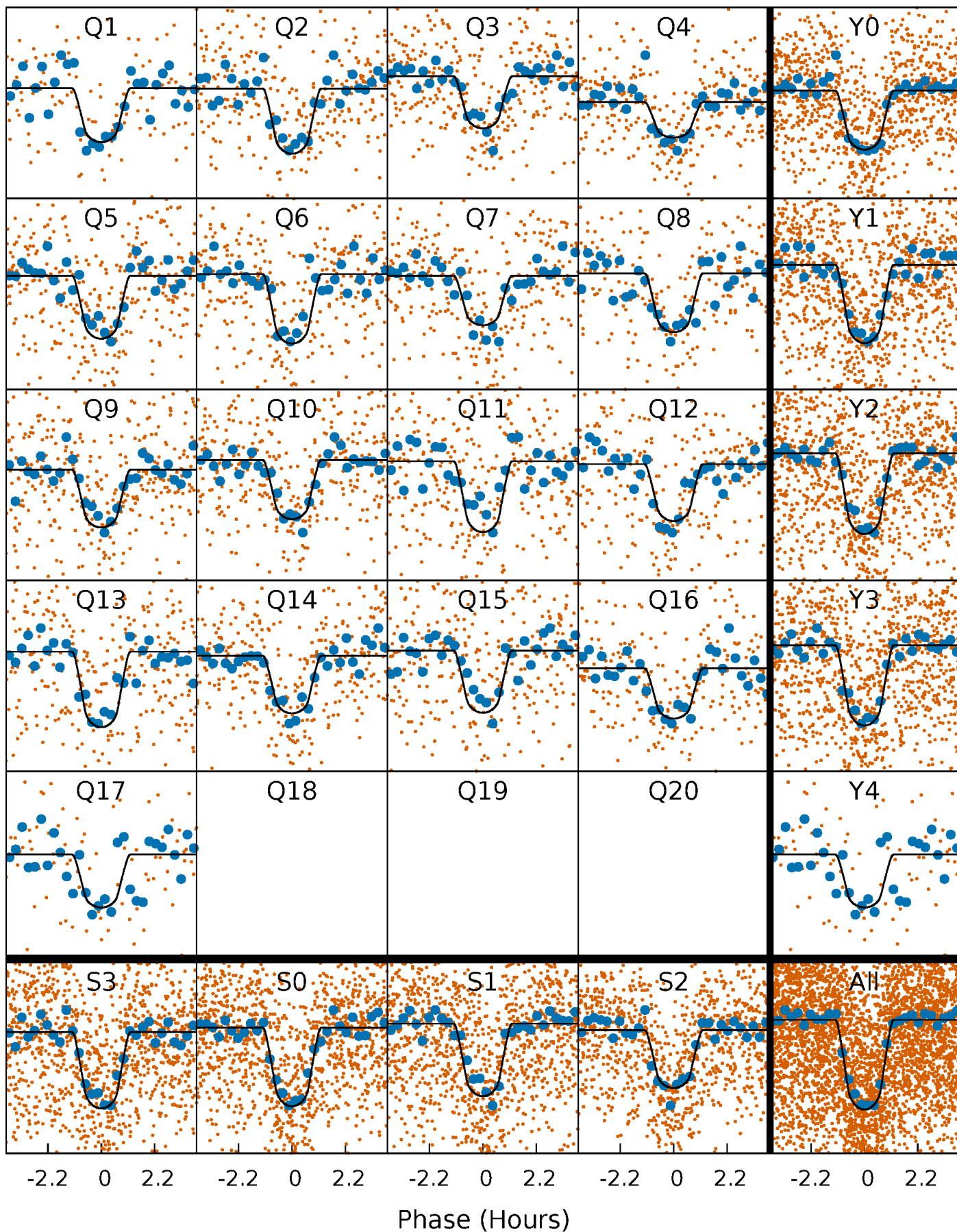
# PDC Quarter-Phased Transit Curves

TCE 006205897-01   P= 4.417705 Days    $T_0=133.959086$  (BKJD)



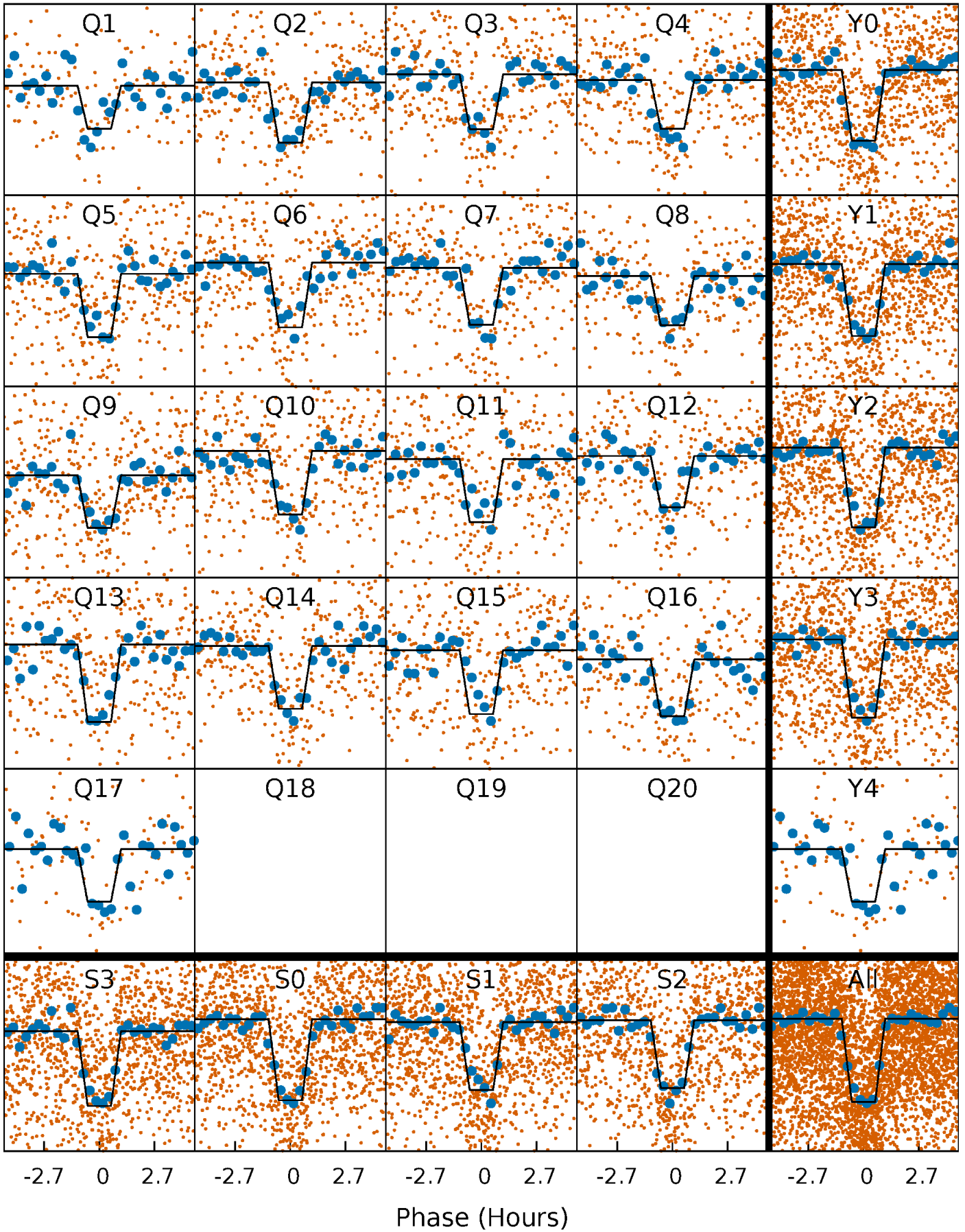
# DV Quarter-Phased Transit Curves

TCE 006205897-01   P= 4.417705 Days    $T_0=133.959086$  (BKJD)



# Alt. Detrend Quarter-Phased Transit Curves

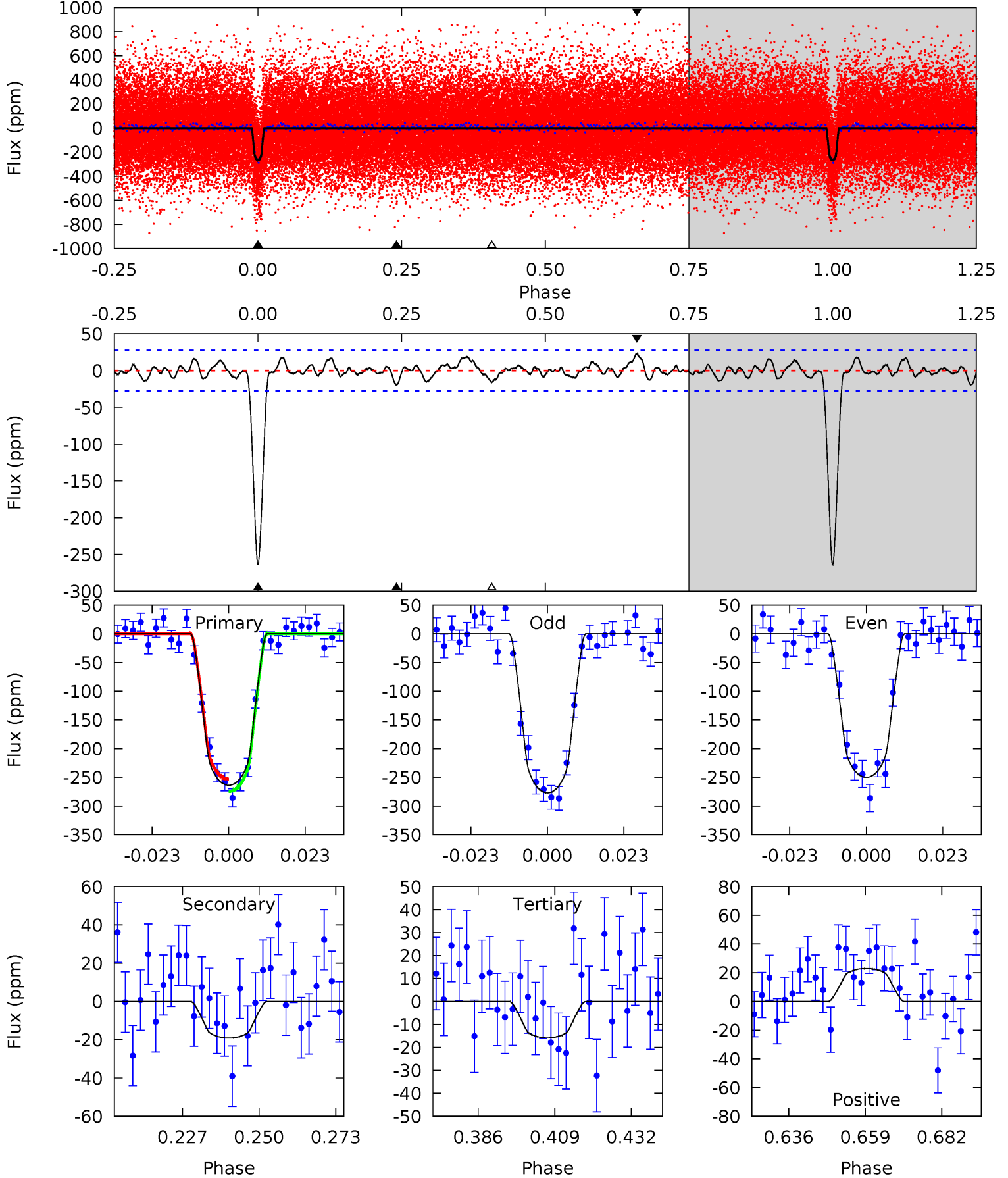
TCE 006205897-01   P= 4.417665 Days    $T_0=133.965715$  (BKJD)



# DV Model-Shift Uniqueness Test

006205897-01, P = 4.417705 Days, E = 129.541381 Days

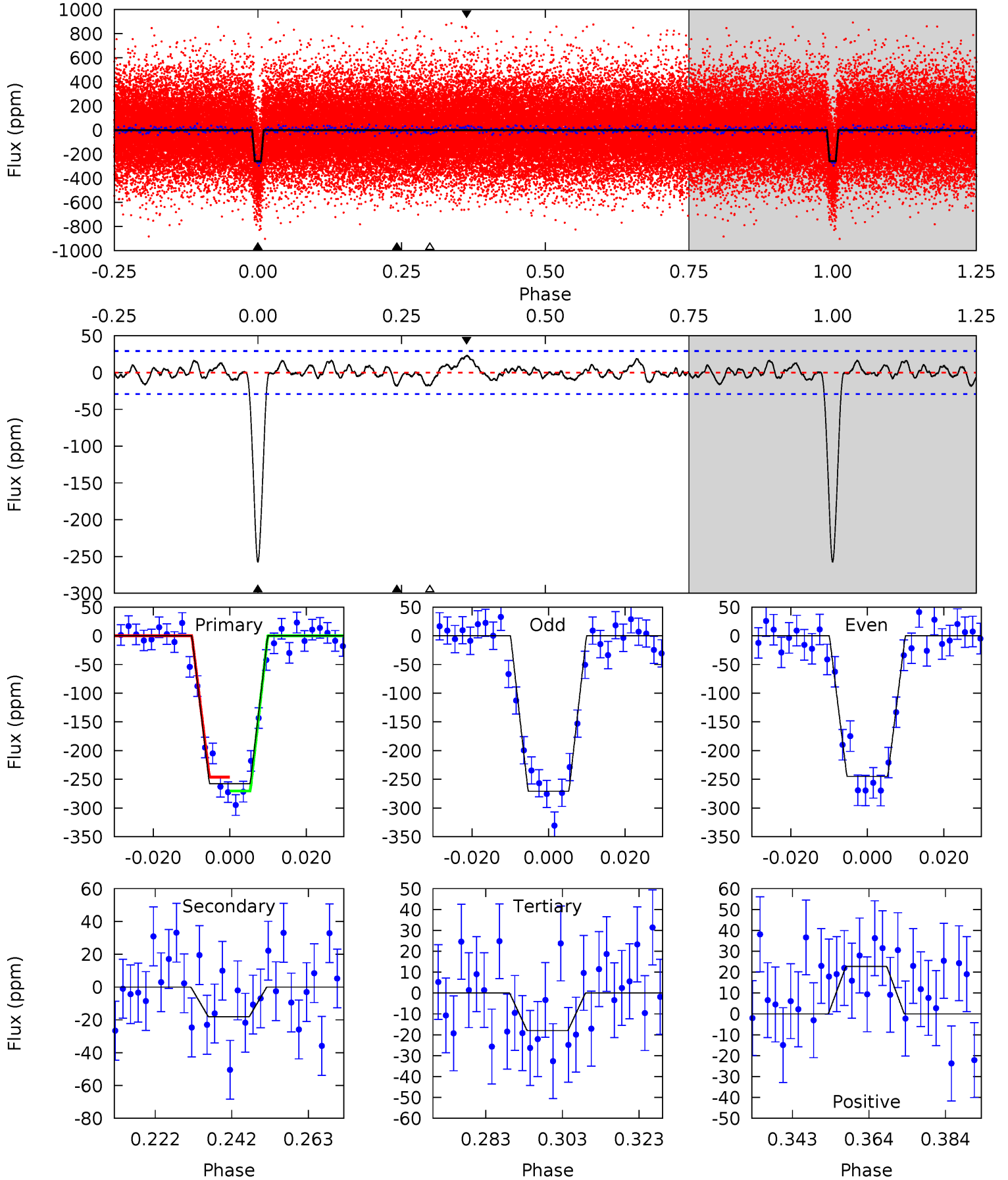
Pri	Sec	Ter	Pos	FA <sub>1</sub>	FA <sub>2</sub>	F <sub>Red</sub>	Pri-Ter	Pri-Pos	Sec-Ter	Sec-Pos	Odd-Evn	DMM	Shape	TAT
46.9	3.39	2.81	4.08	4.87	2.28	1.30	44.0	42.8	0.58	-0.69	2.42	0.98	0.08	1.96



# Alt Model-Shift Uniqueness Test

006205897-01, P = 4.417665 Days, E = 129.548050 Days

Pri	Sec	Ter	Pos	FA <sub>1</sub>	FA <sub>2</sub>	F <sub>Red</sub>	Pri-Ter	Pri-Pos	Sec-Ter	Sec-Pos	Odd-Evn	DMM	Shape	TAT
43.1	3.03	3.01	3.81	4.89	2.32	1.25	40.1	39.3	0.02	-0.77	2.16	1.00	0.08	2.04



### Stellar Parameters For KIC 006205897

	$T_{\text{eff}}(K)$	$\log(g)$	$[\text{Fe}/\text{H}]$	$R (R_{\odot})$	$M(M_{\odot})$	$p_{\star} (\text{g}\cdot\text{cm}^{-3})$
	$4766^{+77}_{-77}$	$4.645^{+0.015}_{-0.039}$	$-0.240^{+0.150}_{-0.150}$	$0.664^{+0.037}_{-0.027}$	$0.723^{+0.029}_{-0.051}$	$3.480^{+0.224}_{-0.503}$
	+2%/-2%	+0%/-1%	+62%/-62%	+6%/-4%	+4%/-7%	+6%/-14%
Source	SPE68	SPE68	SPE68	DSEP		

KIC = Kepler Input Catalog; PHO = Photometry; SPE = Spectroscopy; AST = Asteroseismology  
 TRA = Transits; DESP = Dartmouth Models; MULT = Multiple Models

### Secondary Eclipse Parameters for KIC 006205897-01 / KOI 1967.01

Detrend	Depth (ppm)	$R_p (R_{\oplus})$	$T_{\text{max}} (K)$	$T_{\text{obs}} (K)$	$A_{\text{obs}}$
DV	$-19 \pm 6$	$1.36^{+0.37}_{-0.38}$	$1109^{+24}_{-21}$	$2918^{+316}_{-231}$	$12^{+12}_{-6}$
Alt.	$-18 \pm 6$	$1.18^{+0.38}_{-0.39}$	$1111^{+21}_{-21}$	$3033^{+381}_{-316}$	$16^{+20}_{-8}$

$T_{\text{max}}$  = Theoretical Maximum Planetary Temperature

$T_{\text{obs}}$  = Observed Planetary Temperature (Assuming  $A=0.3$ )

$A_{\text{obs}}$  = Observed Albedo (Assuming  $T=0$ )

If a secondary eclipse is present, the system is likely an EB if  $T_{\text{obs}} \gg T_{\text{max}}$  AND  $A_{\text{obs}} \gg 1.0$

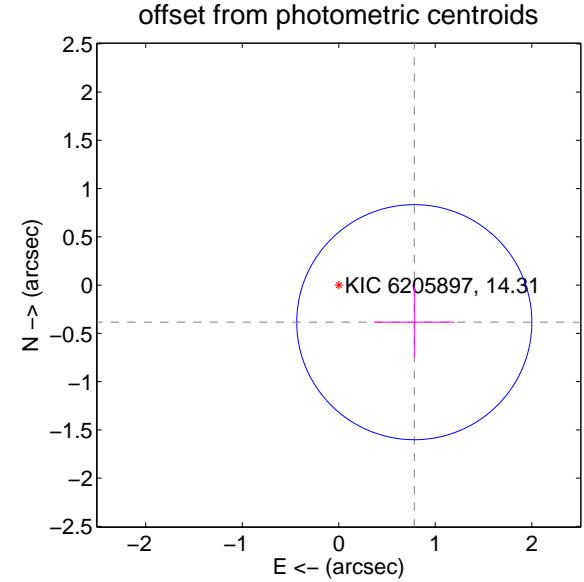
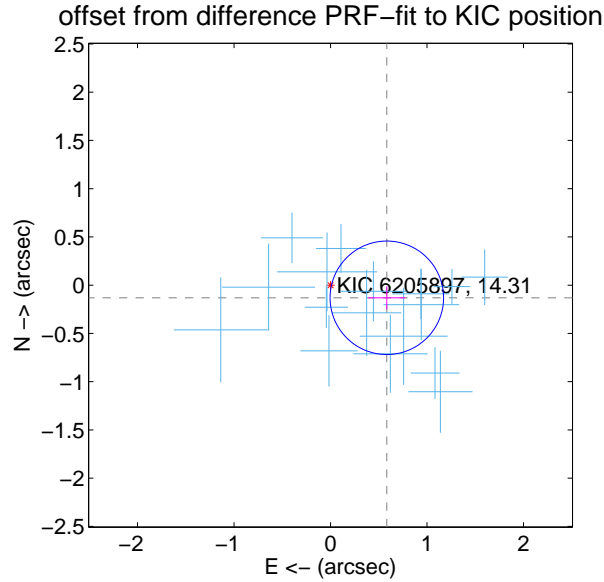
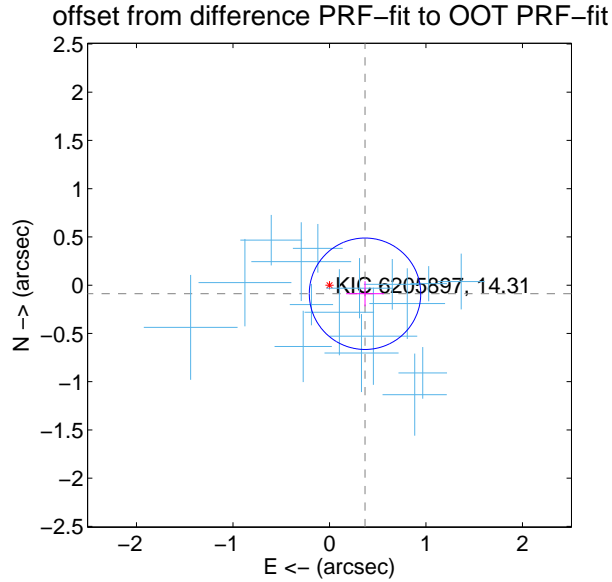
## DV Centroid Data

Supplemental centroid analysis for 006205897-01. Kepler magnitude: 14.31. Transit SNR 34.41

There are 17 quarters with good PRF difference image offsets

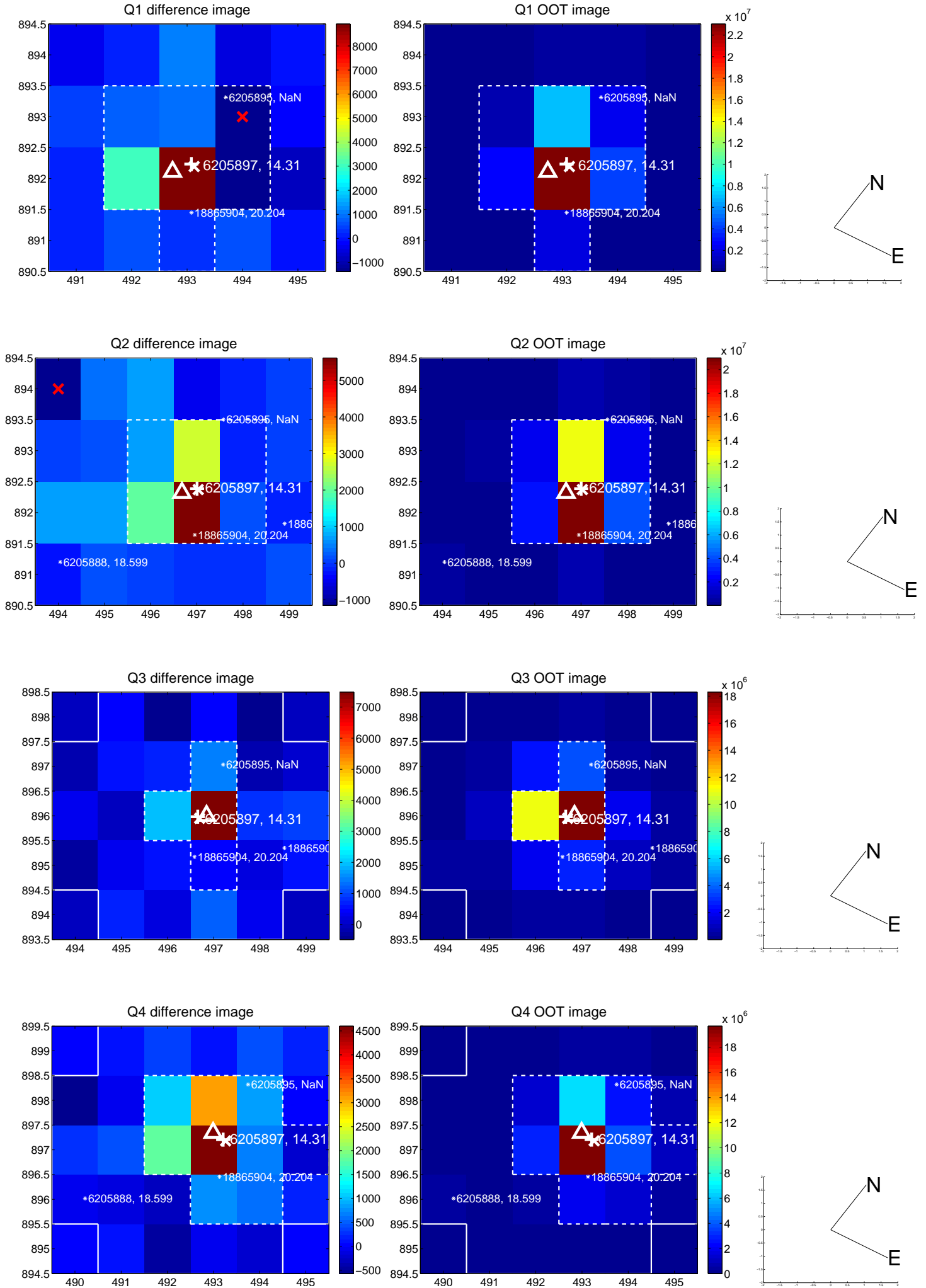
The direct PRF centroid is offset from the target star catalog position by about 0.30 arcsec

	Distance in arcsec	Distance / $\sigma$	$\Delta$ RA	$\Delta$ Dec
PRF-fit source offset from OOT	$0.379 \pm 0.192$	1.97	$-0.368 \pm 0.195$	$-0.089 \pm 0.130$
PRF-fit source offset from KIC position	$0.598 \pm 0.196$	3.05	$-0.584 \pm 0.193$	$-0.131 \pm 0.120$
photometric centroid source offset	$0.87 \pm 0.41$	2.15	$-0.78 \pm 0.41$	$-0.38 \pm 0.37$

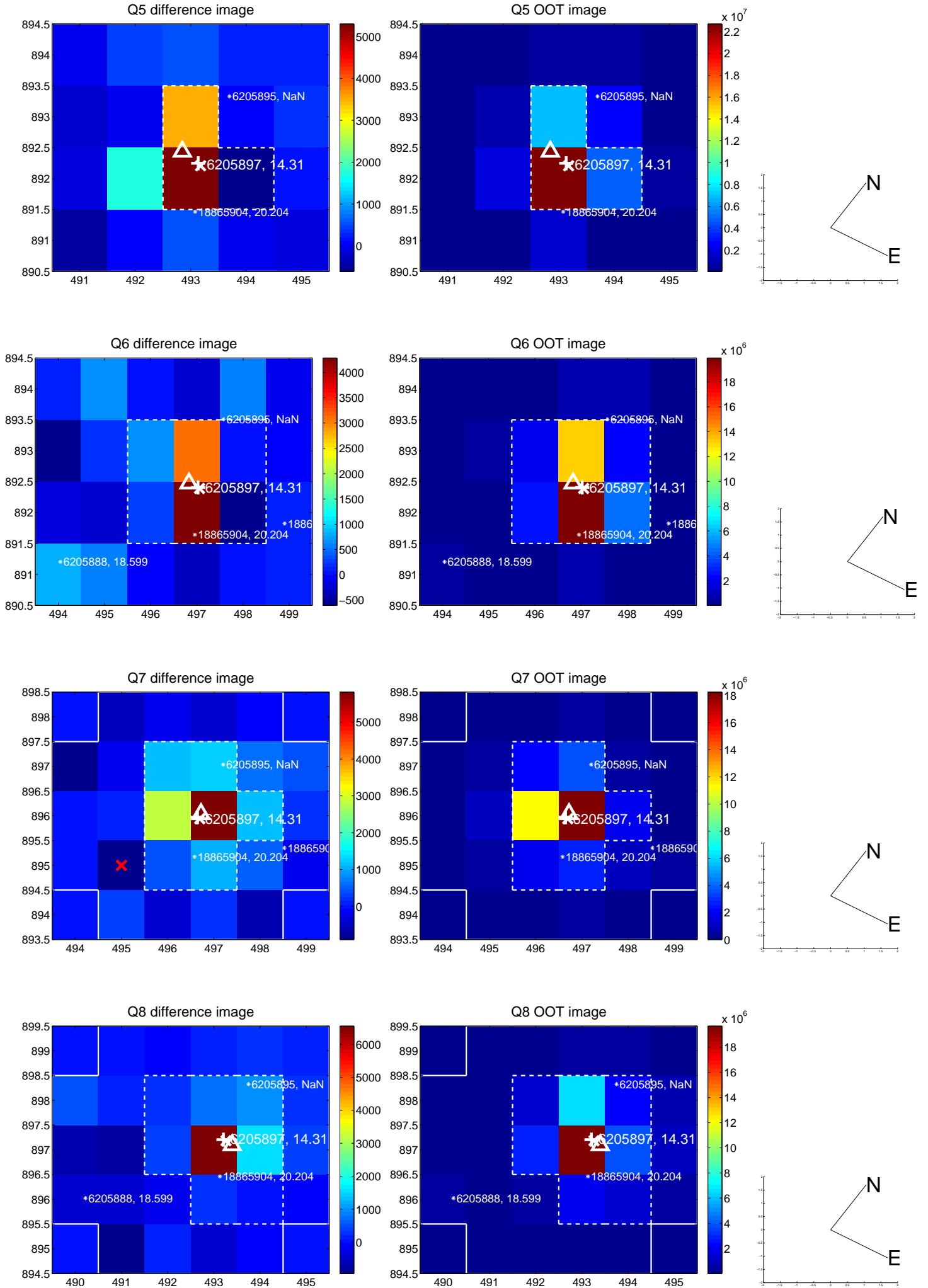


Centroid source offsets from the target star reconstructed from PRF and photometric centroids. **Sky blue crosses:** good quarterly centroid offsets; **Vermillion crosses:** bad quarterly centroid offsets; magenta cross: average over quarters. Length of the crosses: one- $\sigma$  uncertainty. Blue circle: three- $\sigma$ . Red \*: target star. Blue \*: Other stars. Text next to a star gives its KIC ID and kepmag. KIC IDs > 15,000,000 are from the UKIRT catalog.

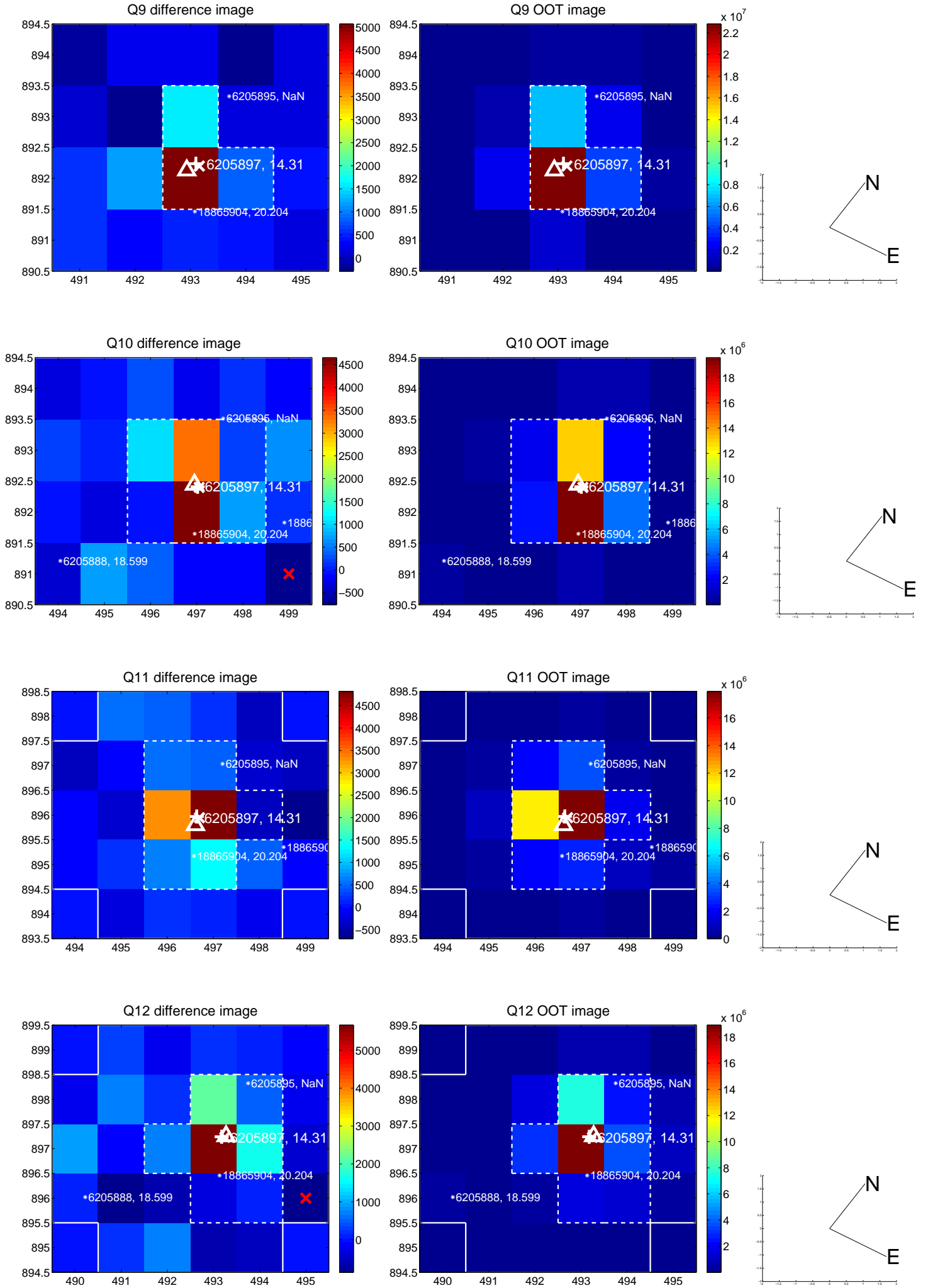
white  $\times$ : KIC target position;  $+$ : OOT centroid;  $\triangle$ : difference centroid. red  $\times$ : large negative pixel value.



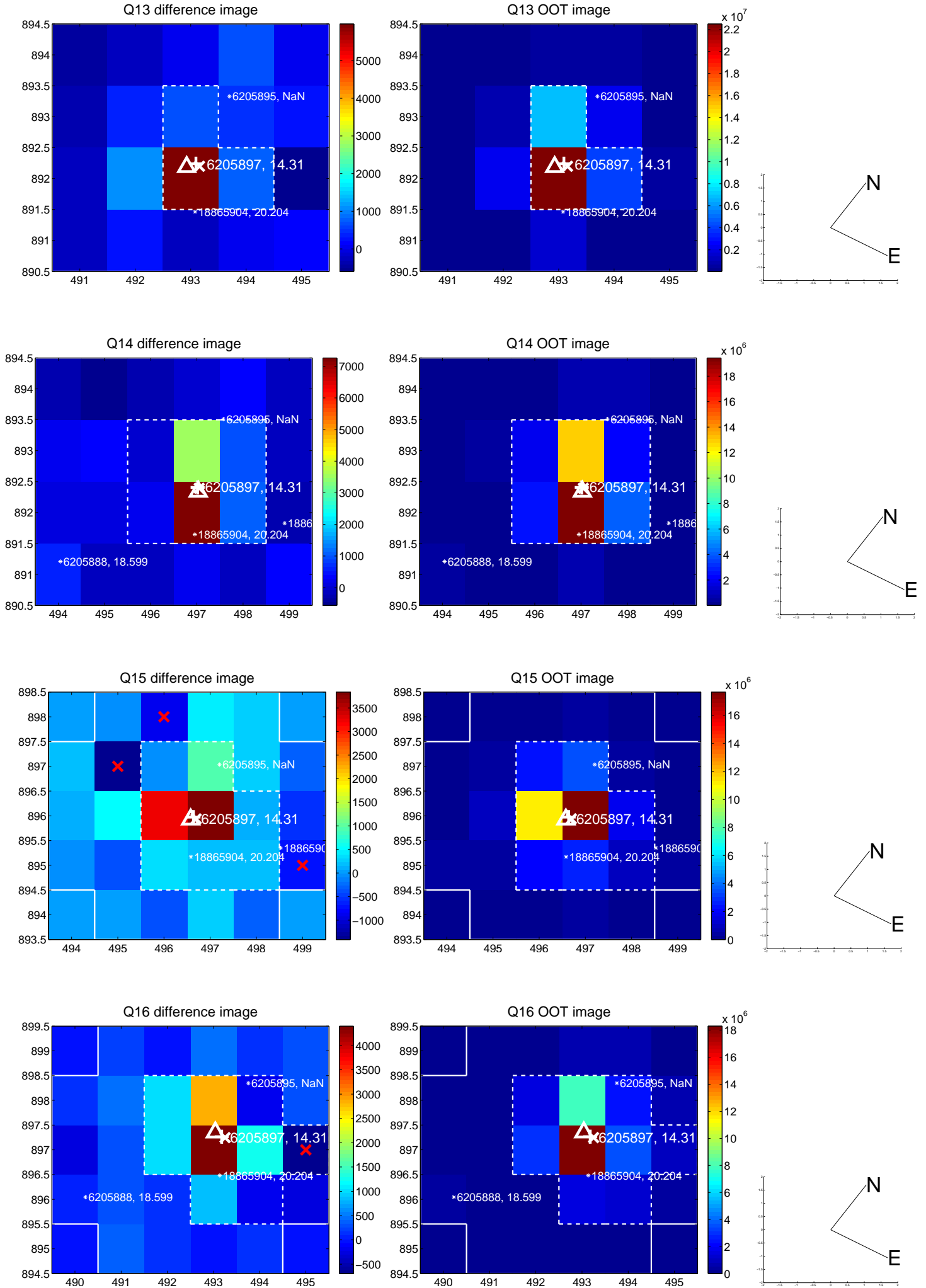
white  $\times$ : KIC target position; +: OOT centroid;  $\triangle$ : difference centroid. red  $\times$ : large negative pixel value.



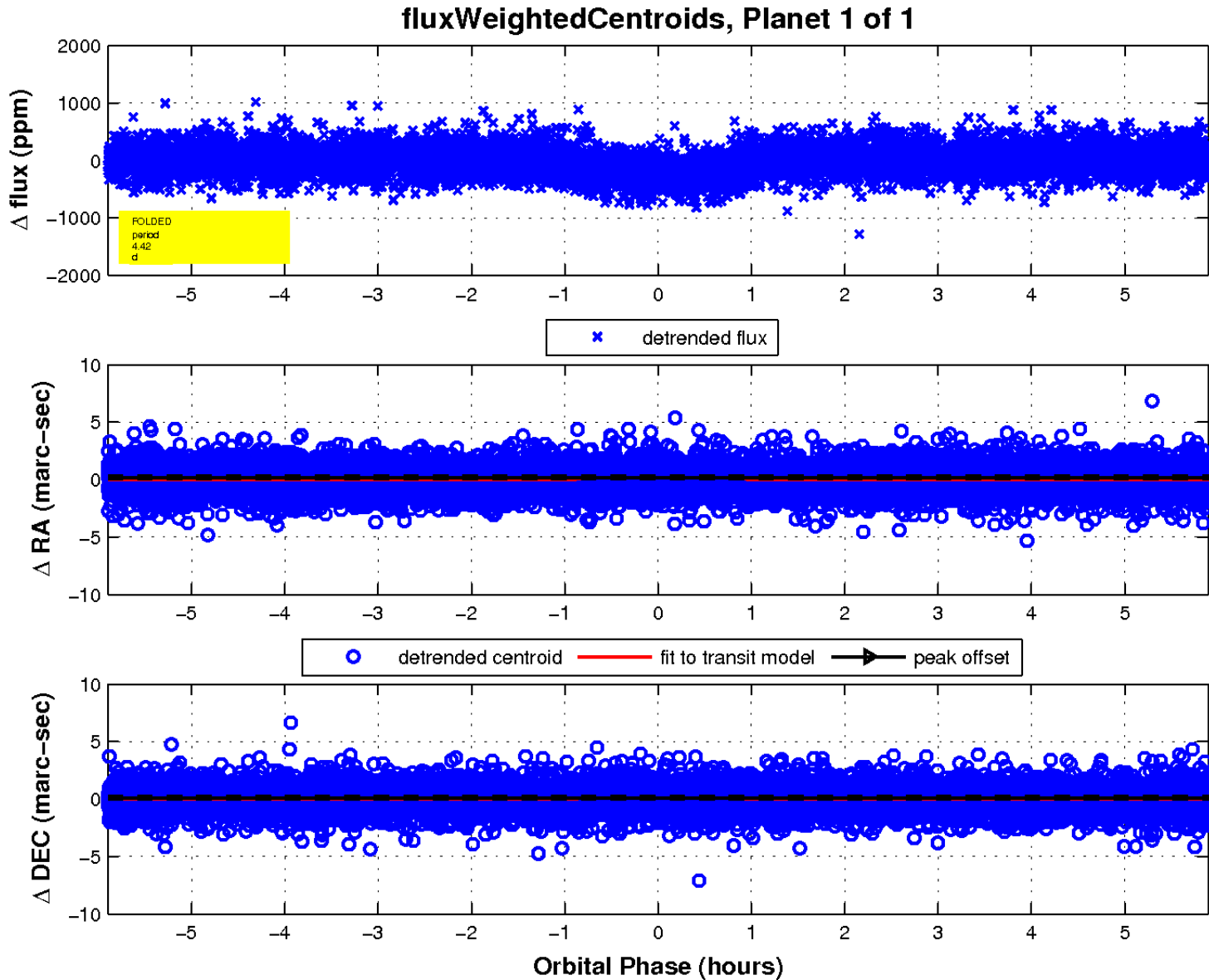
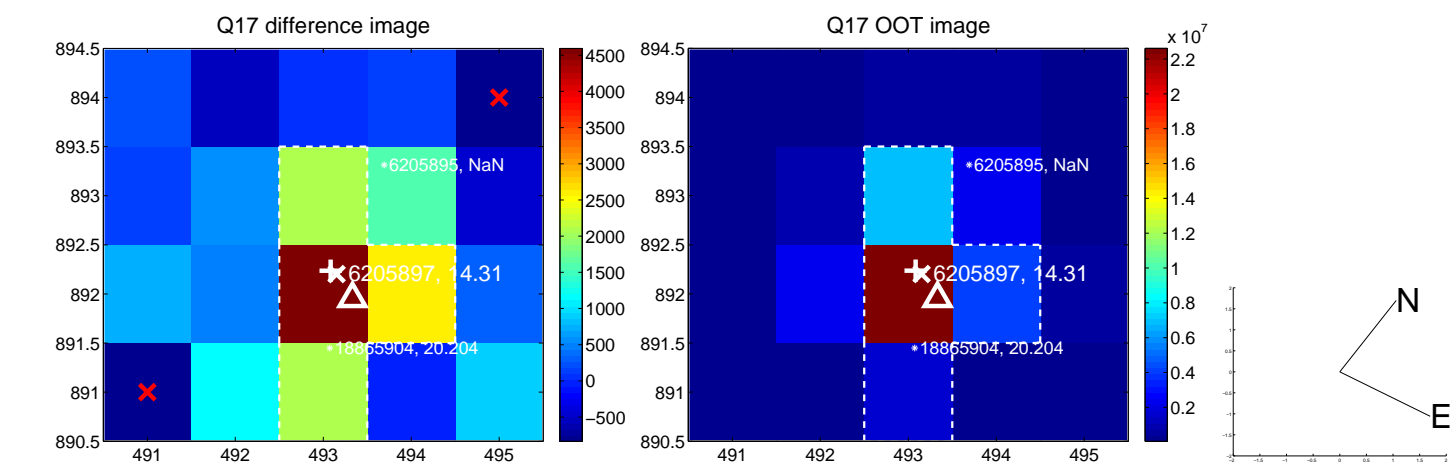
white  $\times$ : KIC target position; +: OOT centroid;  $\triangle$ : difference centroid. red  $\times$ : large negative pixel value.



white  $\times$ : KIC target position; +: OOT centroid;  $\triangle$ : difference centroid. red  $\times$ : large negative pixel value.



white  $\times$ : KIC target position;  $+$ : OOT centroid;  $\triangle$ : difference centroid. red  $\times$ : large negative pixel value.



# UKIRT Image

Declination

