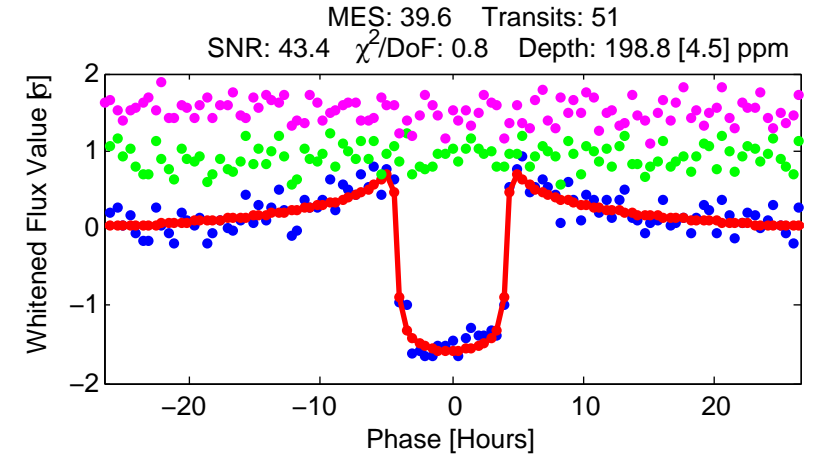
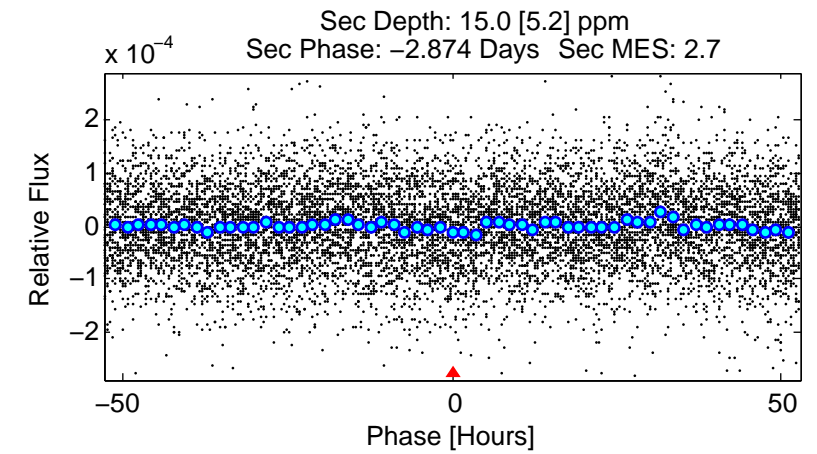
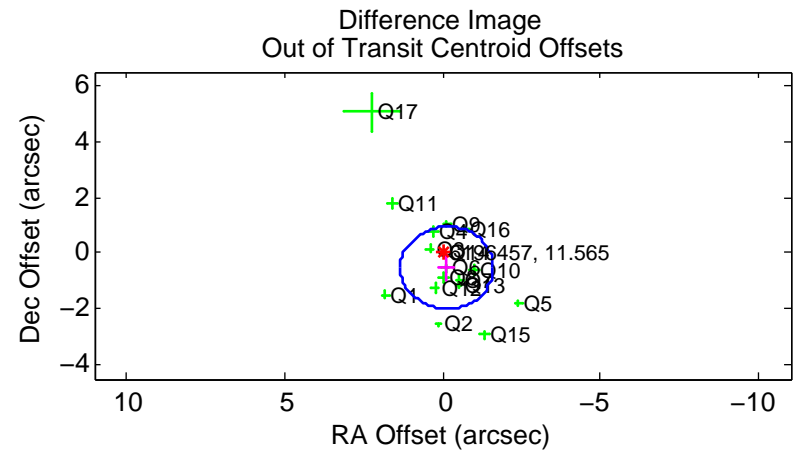
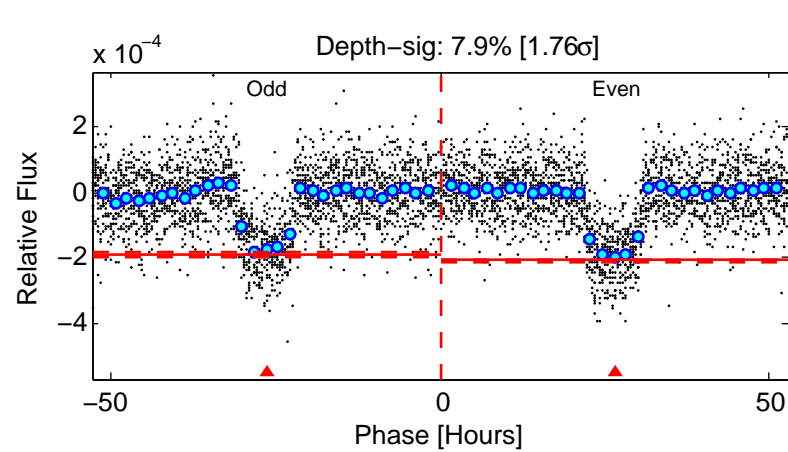
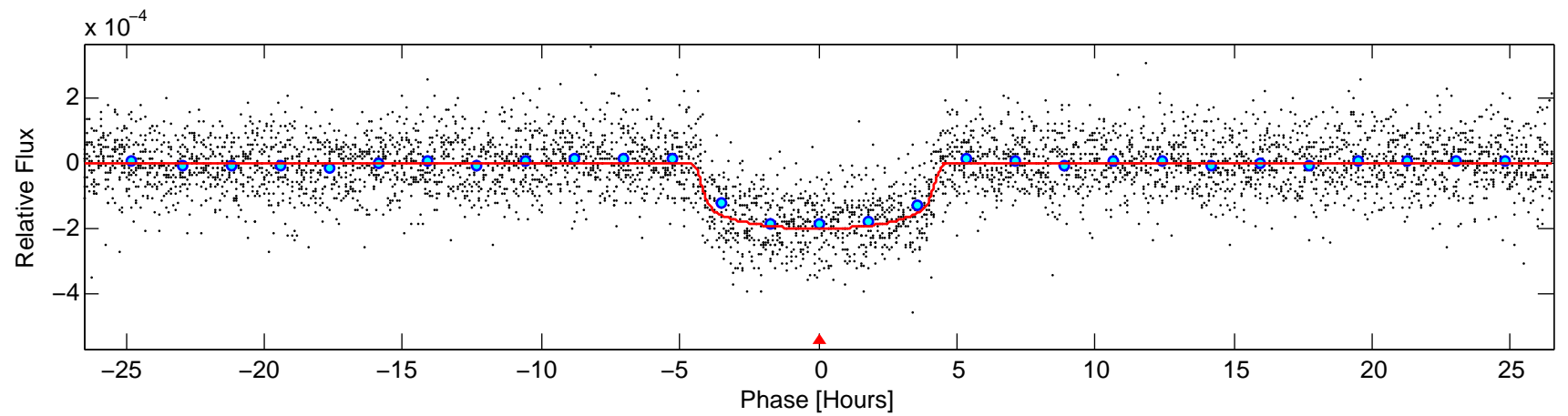
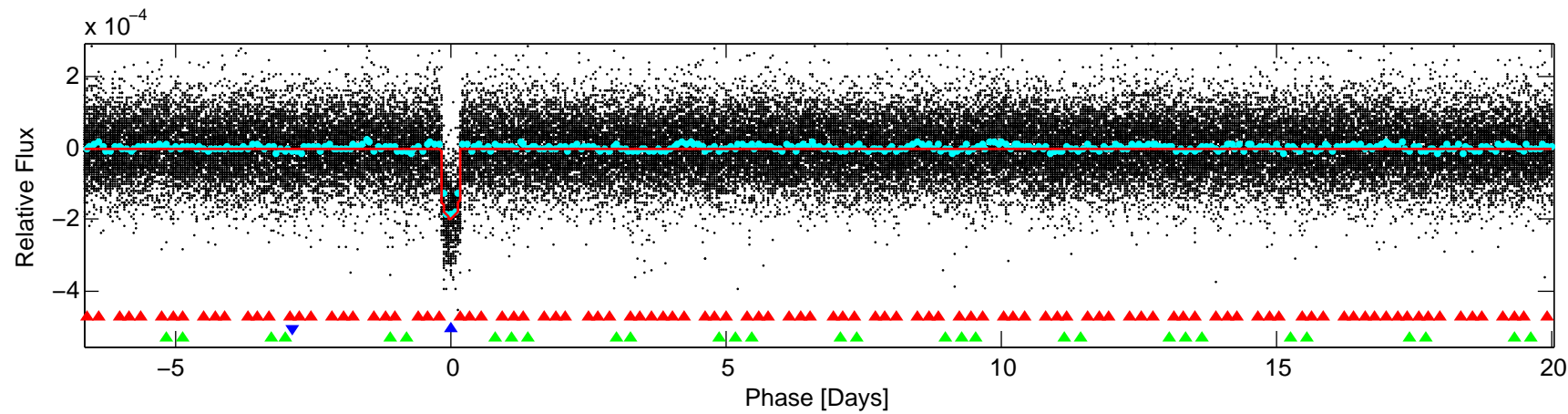
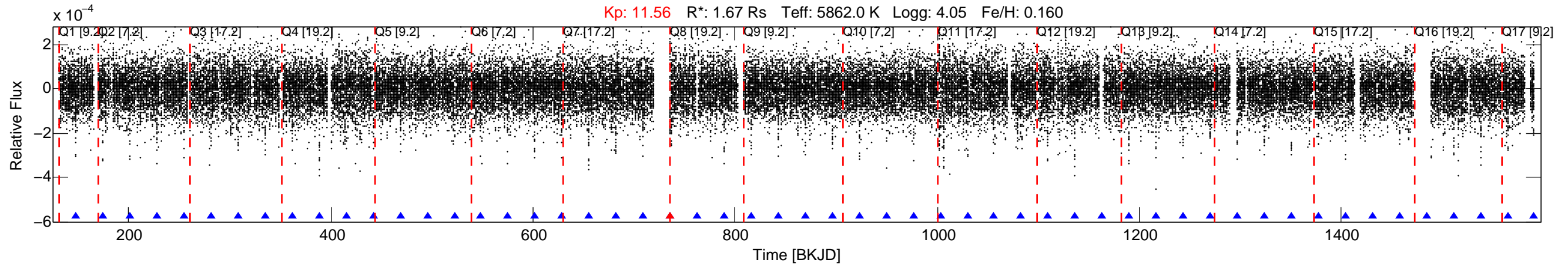


KIC: 6196457 Candidate: 2 of 3 Period: 26.723 d  
 KOI: K00285.02 Name: Kepler-92c Corr: 0.981



#### DV Fit Results:

Period = 26.72310 [0.00008] d  
 Epoch = 147.9384 [0.0025] BKJD  
 Rp/R\* = 0.0146 [0.0008]  
 a/R\* = 13.31 [3.37]  
 b = 0.84 [0.09]  
 Seff = 88.25 [8.45]  
 Teq = 782 [19] K  
 Rp = 2.66 [0.24] Re  
 a = 0.1829 [0.0098] AU  
 Ag = 39.00 [14.34] [2.65 $\sigma$ ]  
 Teffp = 3020 [277] K [8.06 $\sigma$ ]

#### DV Diagnostic Results:

ShortPeriod-sig: 100.0% [28.92 $\sigma$ ]  
 LongPeriod-sig: 100.0% [38.26 $\sigma$ ]  
 ModelChiSquare2-sig: 94.9%  
 ModelChiSquareGof-sig: 100.0%  
 Bootstrap-pfa: 1.52e-308  
 RollingBand-fgt: 0.98 [47/48]  
 GhostDiagnostic-chr: 18.21  
 Centroid-sig: 1.1%  
 Centroid-so: 0.549 arcsec [3.05 $\sigma$ ]  
 OotOffset-rm: 0.543 arcsec [1.11 $\sigma$ ]  
 KicOffset-rm: 0.438 arcsec [0.89 $\sigma$ ]  
 OotOffset-st: 4/4/4/5 [17]  
 KicOffset-st: 4/4/4/5 [17]  
 DiffImageQuality-fgm: 0.94 [16/17]  
 DiffImageOverlap-fno: 1.00 [17/17]