

KIC 005908086

Q1-17 DR25 TCE Parameters

TCE	Run Type	KOI?	Period (Days)	Epoch (BKJD)	Depth (ppm)	Duration (Hours)	MES	SNR	R_{\star} (R_{\odot})	T_{\star} (K)	R_p (R_{\oplus})	S_p (S_{\oplus})
005908086-01	OBS	7563.01	0.937088	132.007242	16.9	4.322	11.7	11.8	7.78	6691	3.36	0.00

Robovetter Results

TCE	Run Type	Disp	Score	N	S	C	E	Comments
005908086-01	OBS	FP	0.00	1	0	0	0	LPP_DV

Notes: OBS = Observed. INJ = Injected. INV = Inverted. SCR = Scrambled.

N = Not Transit-Like. S = Stellar Eclipse. C = Centroid Offset. E = Ephemeris Match.

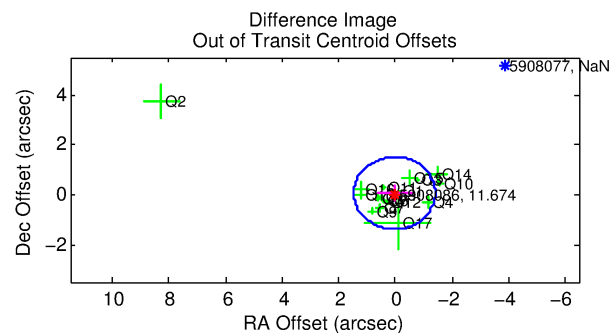
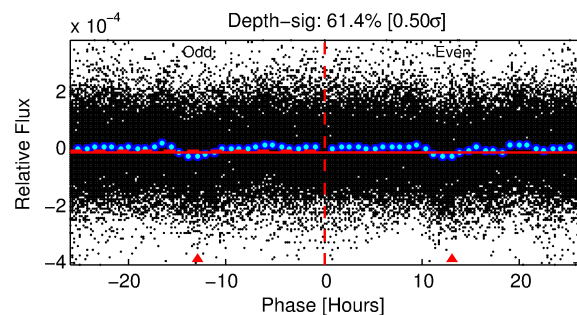
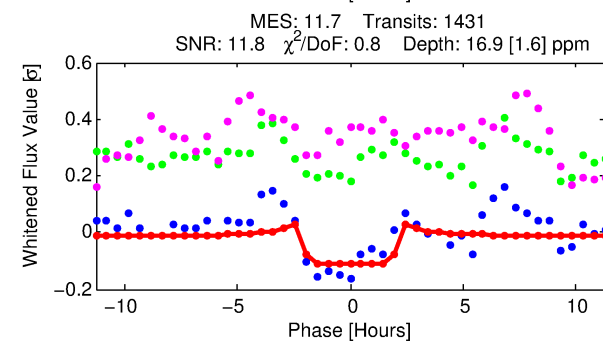
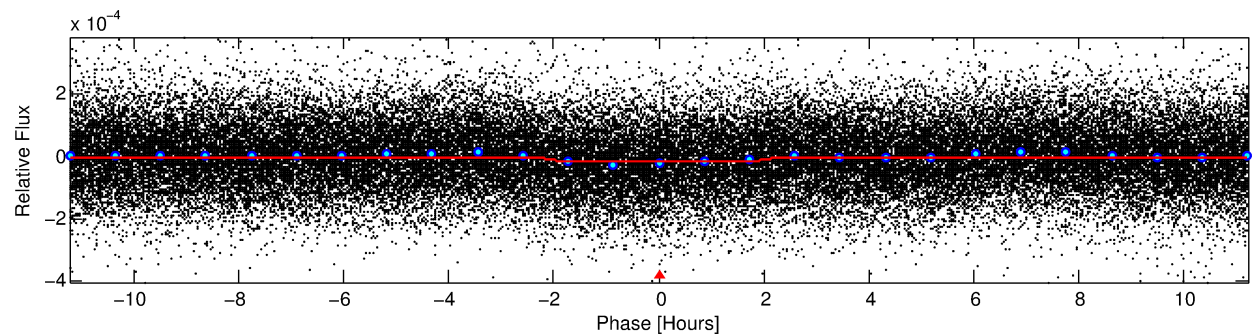
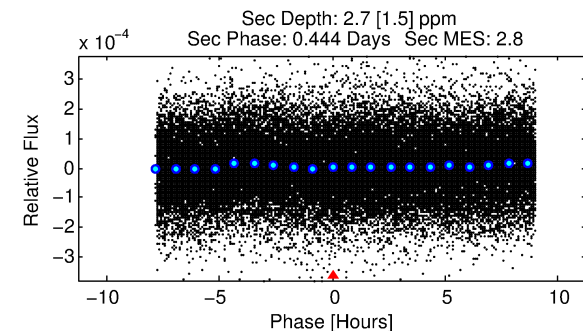
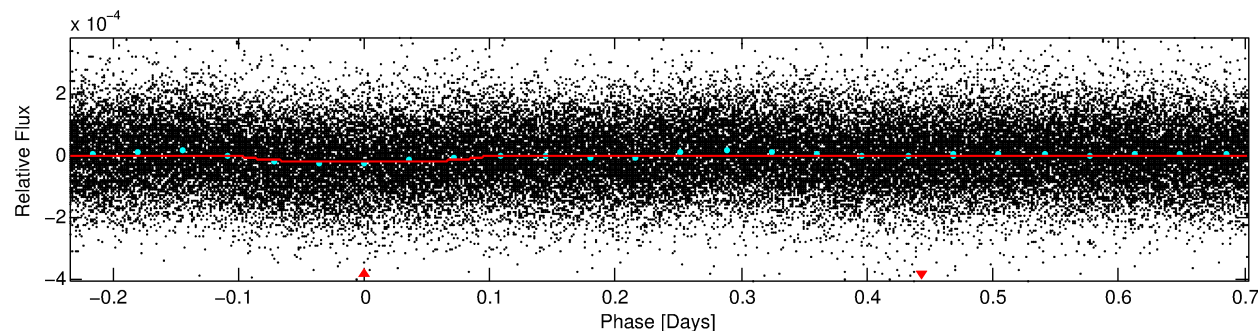
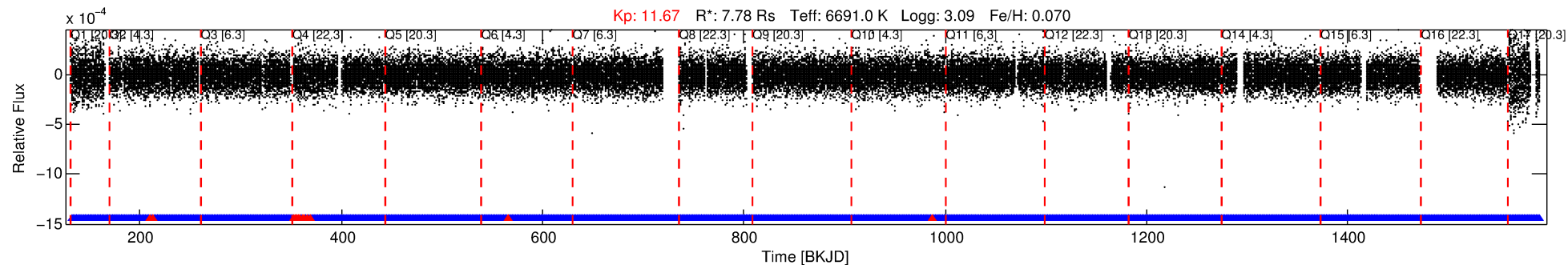
See http://exoplanetarchive.ipac.caltech.edu/docs/API_kepcandidate_columns.html#proj_disp_col for comment definitions.

Ephemeris Match Information For 005908086-01

No Significant Match Found

DV One-Page Summary

KIC: 5908086 Candidate: 1 of 1 Period: 0.937 d
KOI: K07563.01 Corr: 0.901



DV Fit Results:

Period = 0.93709 [0.00001] d
Epoch = 132.0072 [0.0028] BKJD
Rp/R* = 0.0040 [0.0007]
a/R* = 1.53 [0.80]
b = 0.61 [0.95]
Seff = N/A
Teq = N/A
Rp = 3.36 [1.92] Re
a = N/A
Ag = N/A
Teffp = N/A

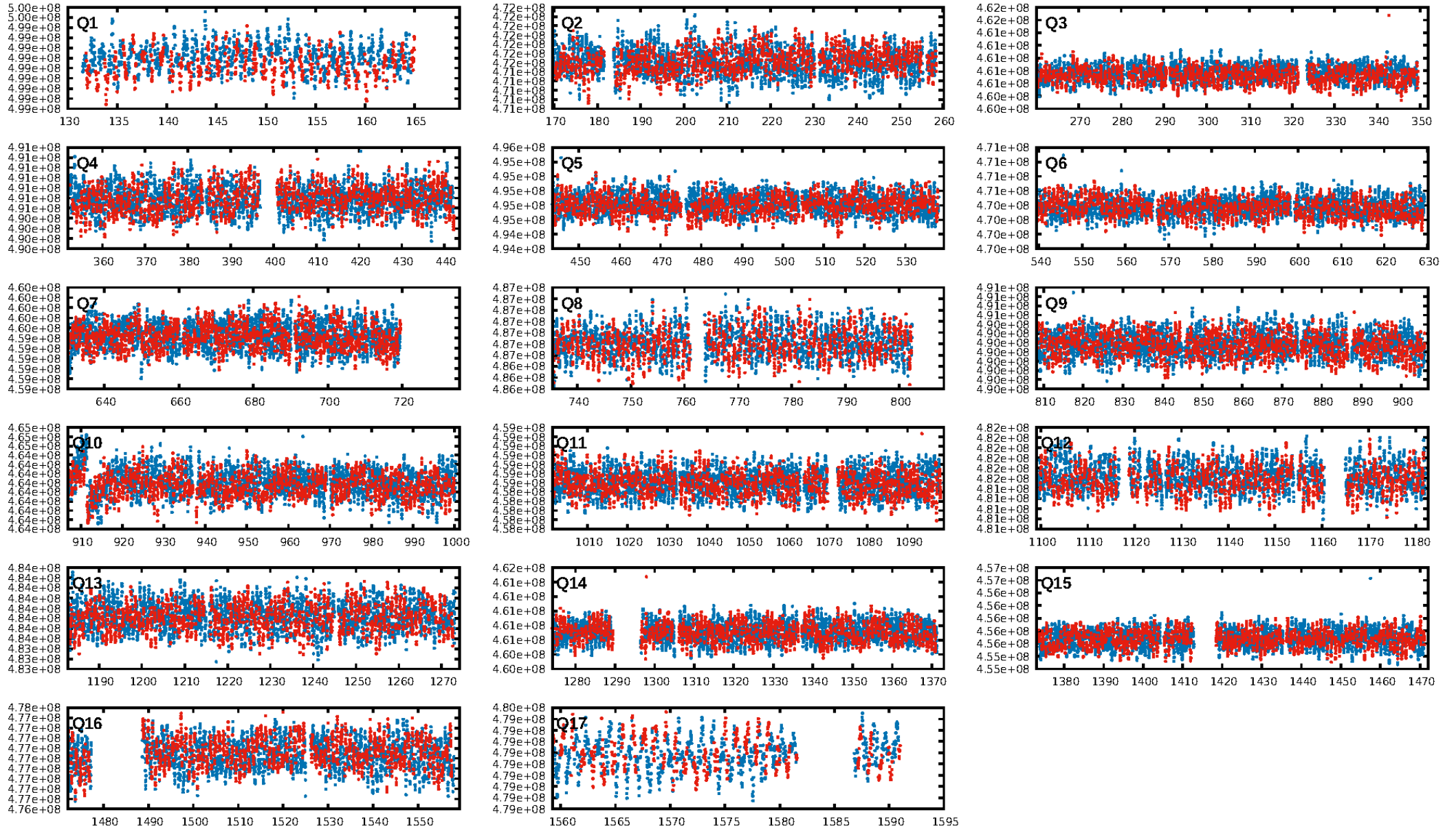
DV Diagnostic Results:

ShortPeriod-sig: N/A
LongPeriod-sig: N/A
ModelChiSquare2-sig: N/A
ModelChiSquareGof-sig: N/A
Bootstrap-pfa: 1.63e-19
RollingBand-fgt: 0.99 [1350/1366]
GhostDiagnostic-chr: 1.746
Centroid-sig: 11.4%
Centroid-so: 0.728 arcsec [1.15σ]
OotOffset-rm: 0.066 arcsec [0.14σ]
KicOffset-rm: 0.033 arcsec [0.18σ]
OotOffset-st: 4/4/4/5 [17]
KicOffset-st: 4/4/4/5 [17]
DiffImageQuality-fgm: 0.82 [14/17]
DiffImageOverlap-fno: 1.00 [17/17]

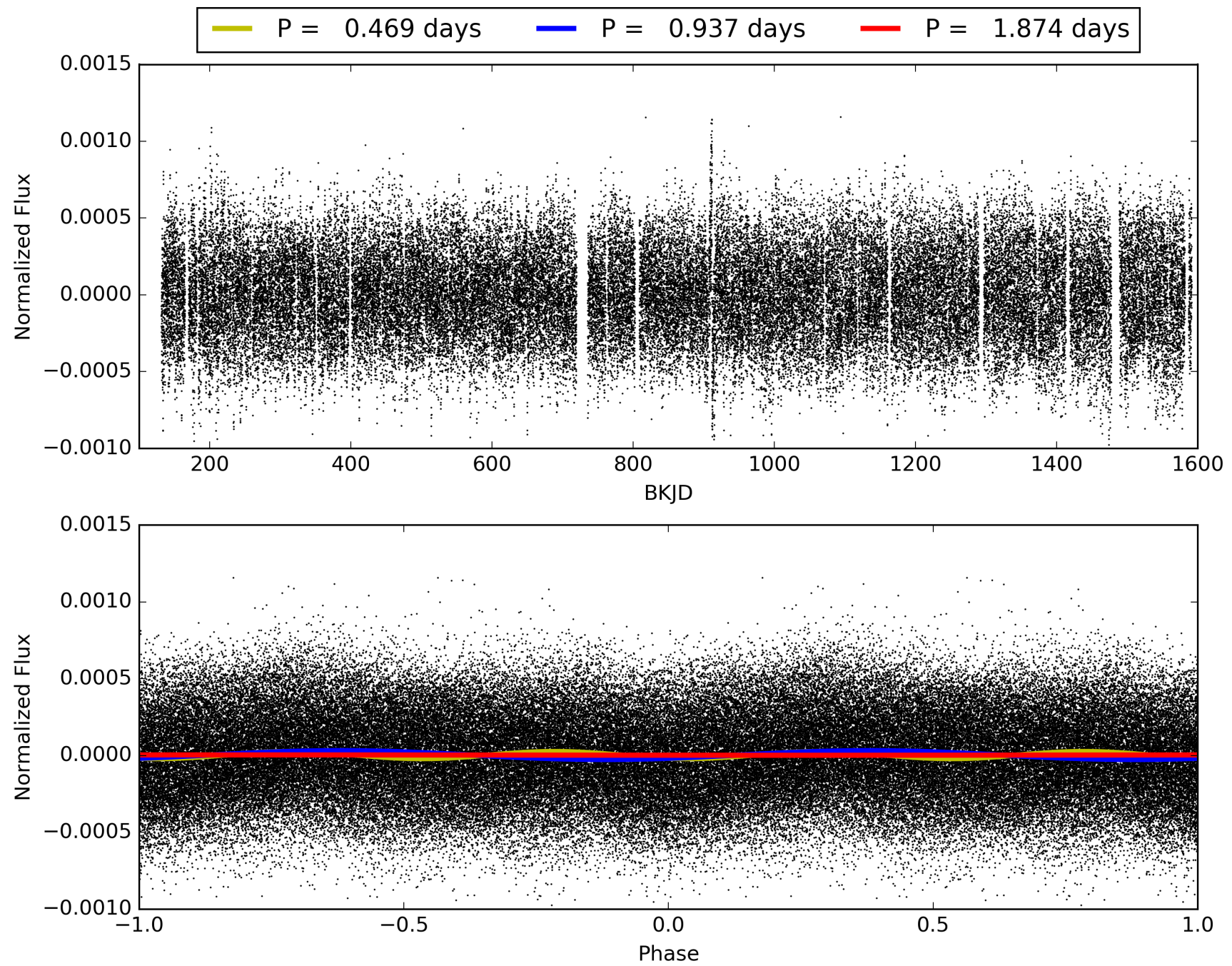
Software Revision: svn+ssh://murzim/repo/soc/tags/release/9.3.42@60958 -- Date Generated: 29-Jan-2016 15:55:58 Z

This Data Validation Report Summary was produced in the Kepler Science Operations Center Pipeline at NASA Ames Research Center

TCE 005908086-01, PDC Light Curves

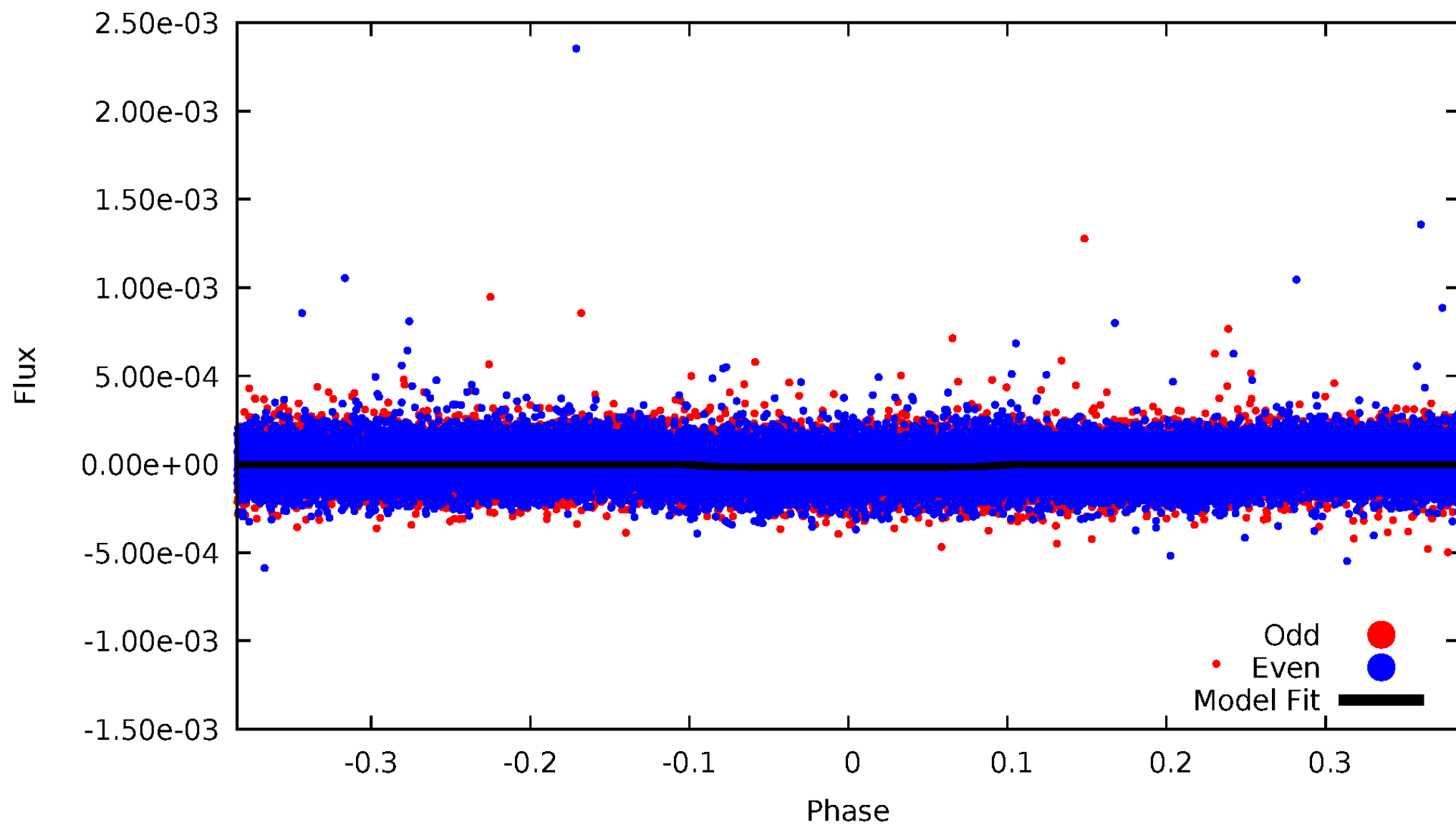


TCE 005908086-01



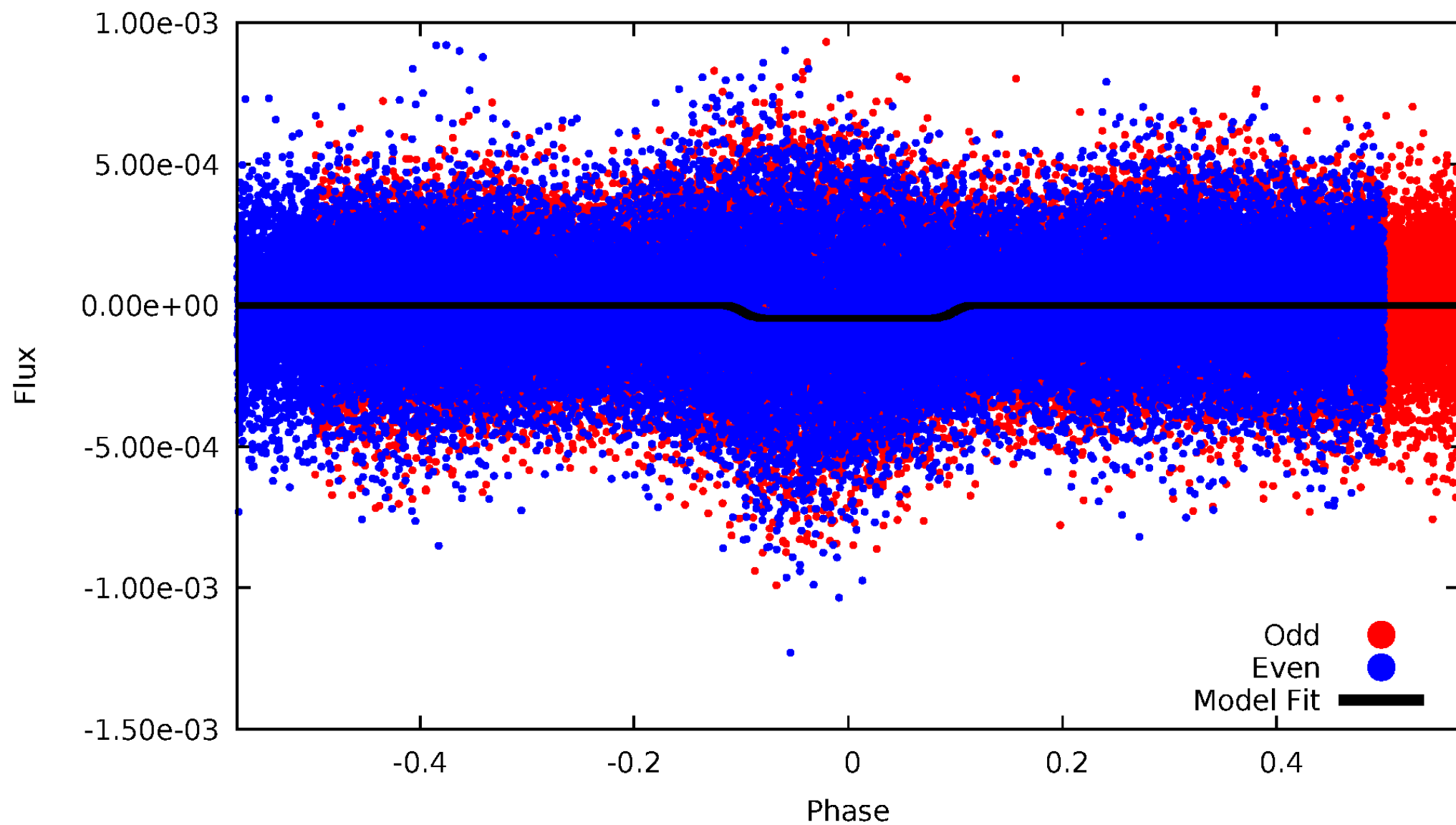
DV Odd/Even

TCE 005908086-01



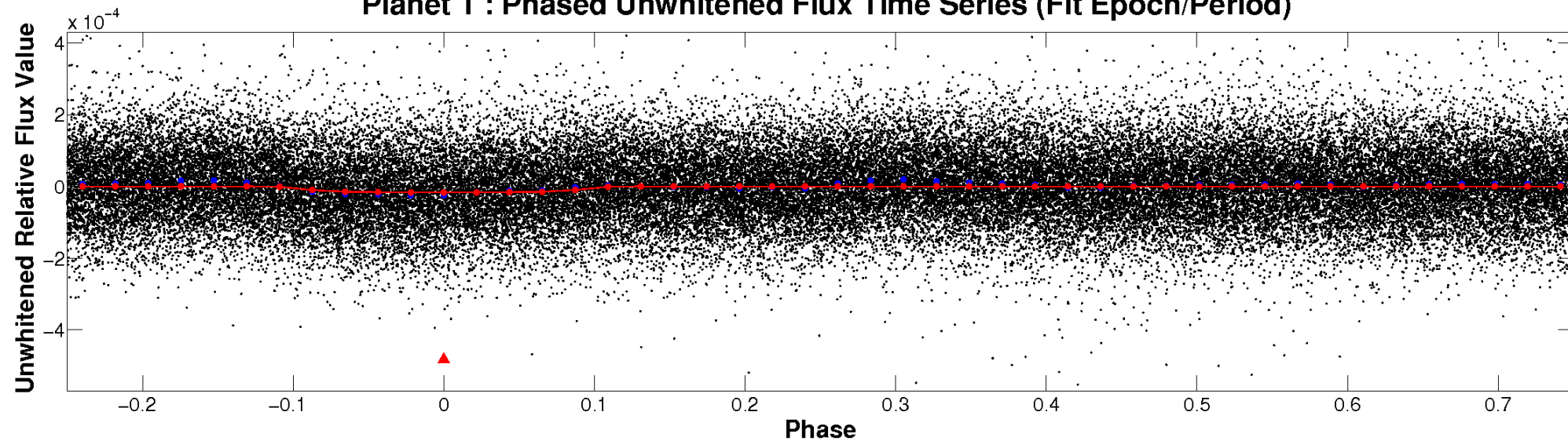
ALT Odd/Even

TCE 005908086-01

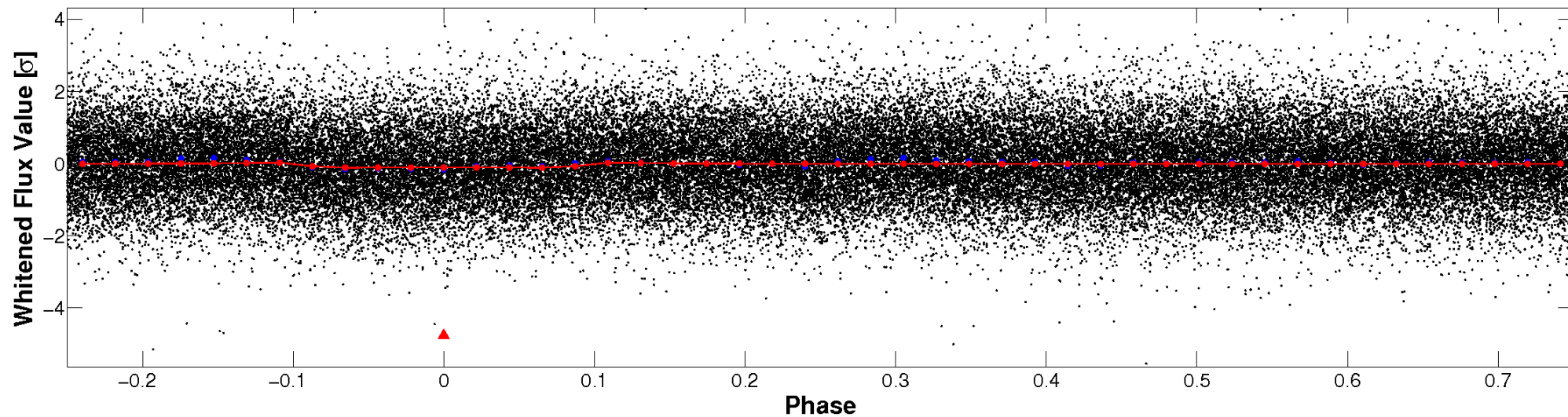


Non-Whitened Vs. Whitened Light Curve

Planet 1 : Phased Unwhitened Flux Time Series (Fit Epoch/Period)

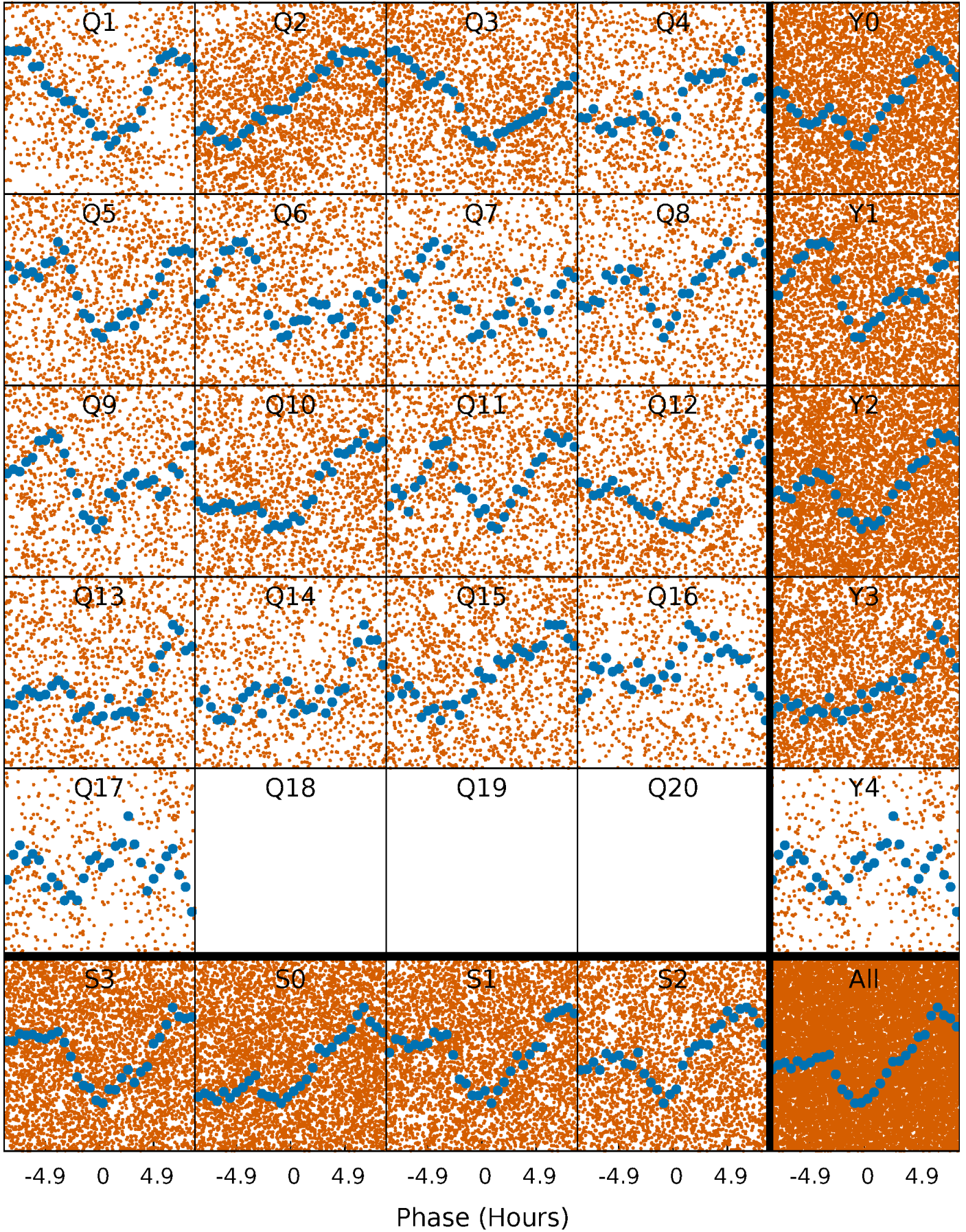


Planet 1 : Phased Whitened Flux Time Series (Fit Epoch/Period)



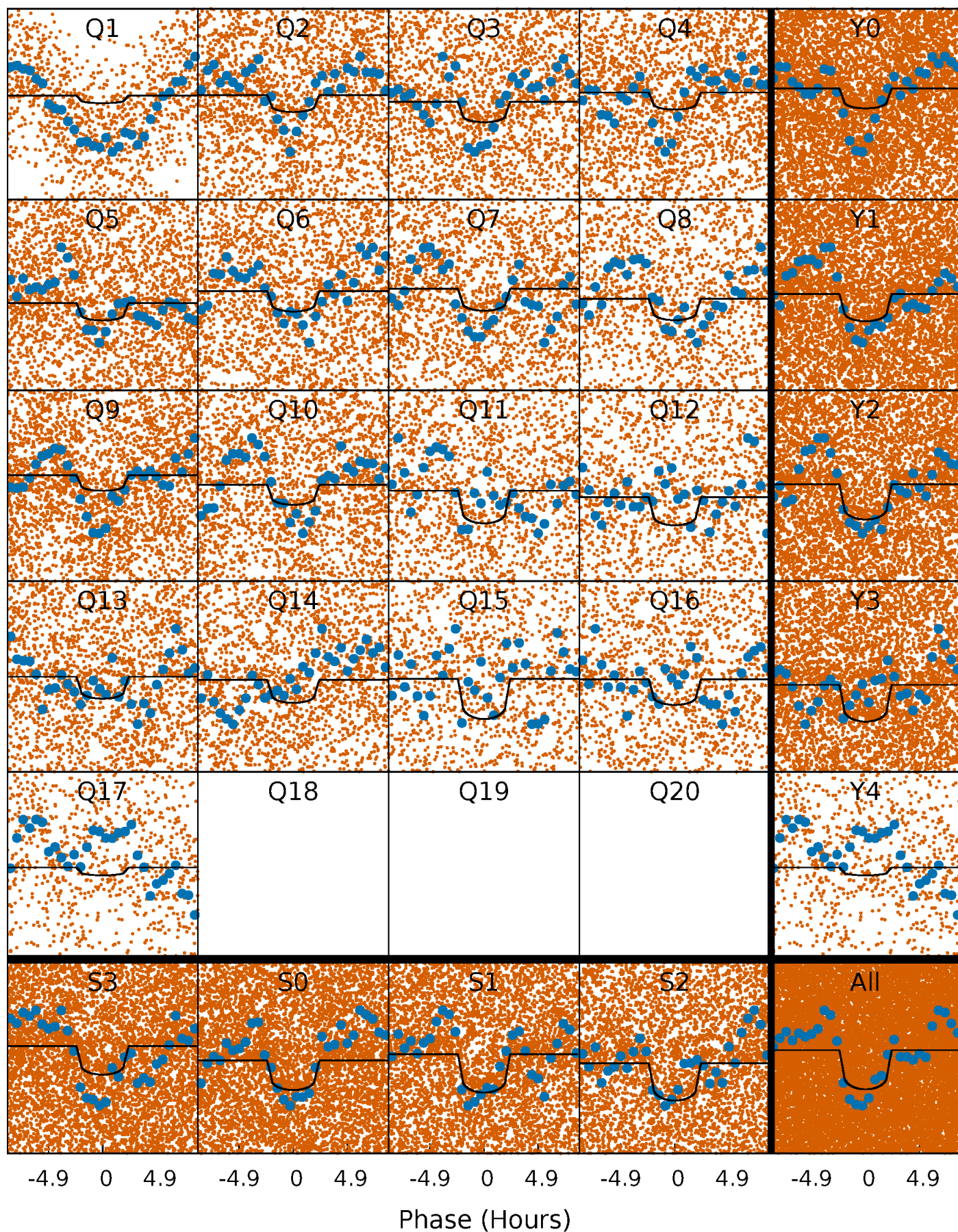
PDC Quarter-Phased Transit Curves

TCE 005908086-01 P= 0.937088 Days $T_0=132.007242$ (BKJD)



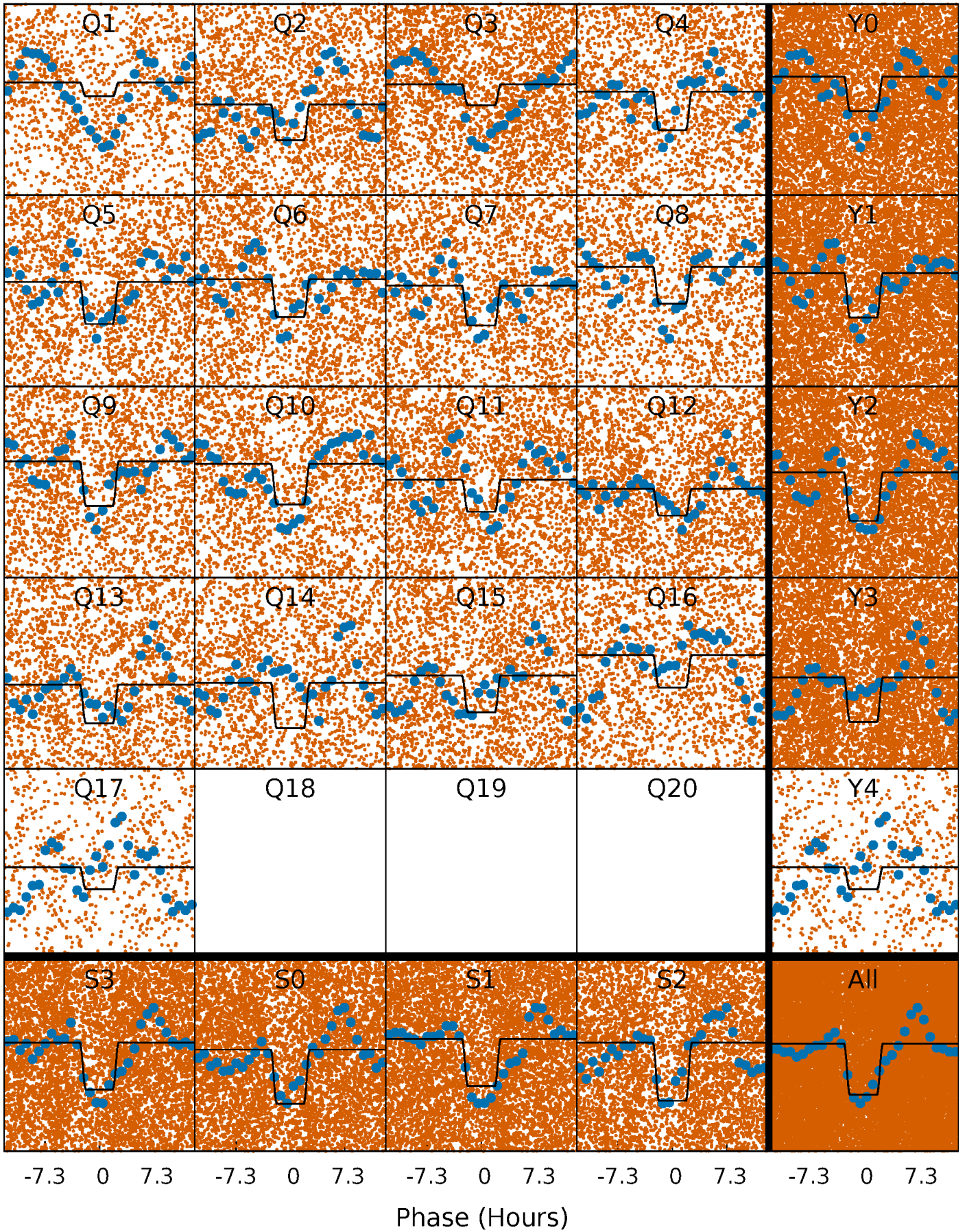
DV Quarter-Phased Transit Curves

TCE 005908086-01 P= 0.937088 Days $T_0=132.007242$ (BKJD)



Alt. Detrend Quarter-Phased Transit Curves

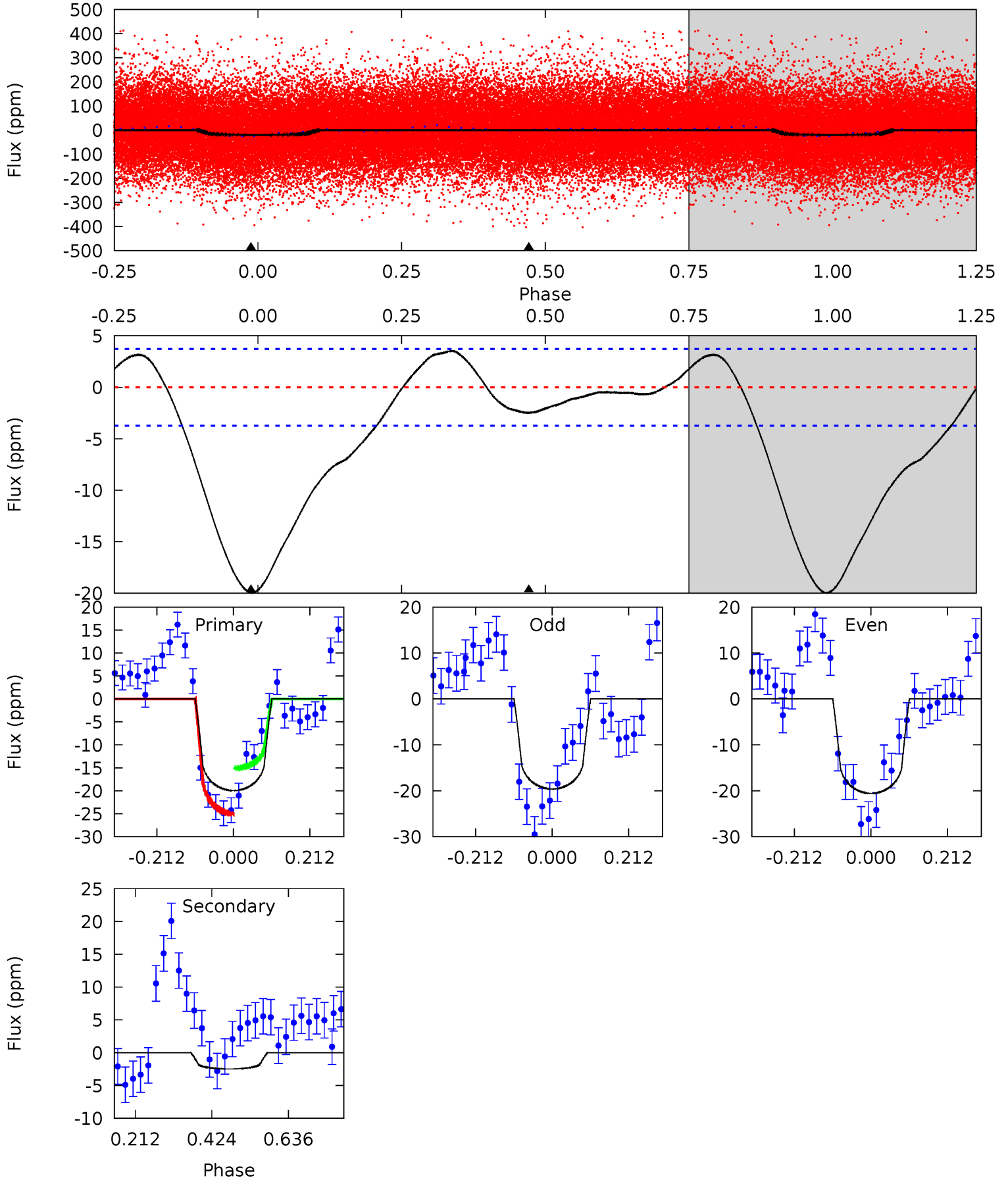
TCE 005908086-01 P= 0.937063 Days $T_0=132.024355$ (BKJD)



DV Model-Shift Uniqueness Test

005908086-01, P = 0.937088 Days, E = 131.070154 Days

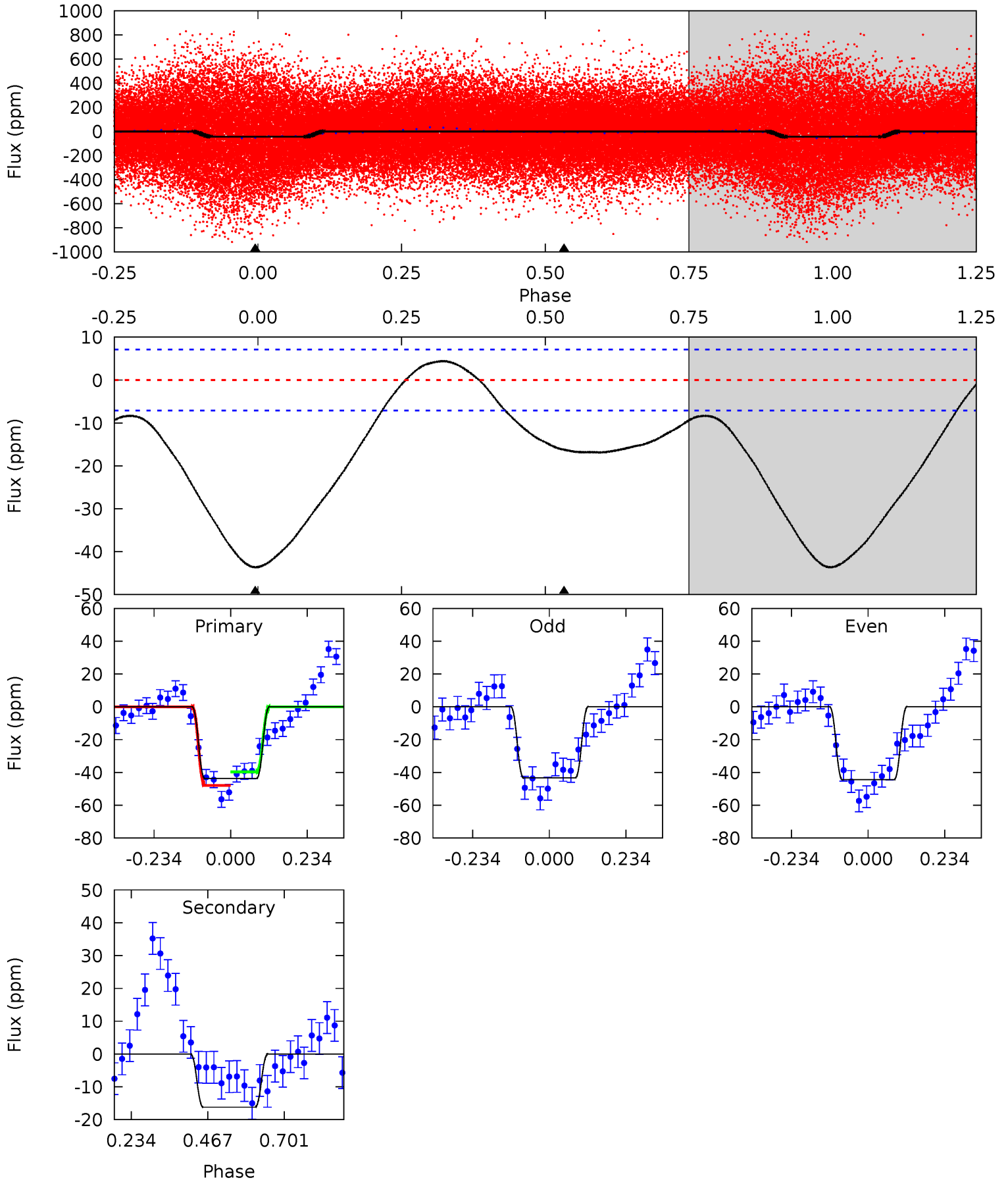
Pri	Sec	Ter	Pos	FA ₁	FA ₂	F _{Red}	Pri-Ter	Pri-Pos	Sec-Ter	Sec-Pos	Odd-Evn	DMM	Shape	TAT
23.6	2.94	0	0	4.40	1.25	2.16	23.6	23.6	2.94	2.94	0.57	1.07	0.15	5.89



Alt Model-Shift Uniqueness Test

005908086-01, P = 0.937063 Days, E = 131.087292 Days

Pri	Sec	Ter	Pos	FA ₁	FA ₂	F _{Red}	Pri-Ter	Pri-Pos	Sec-Ter	Sec-Pos	Odd-Evn	DMM	Shape	TAT
26.9	10.0	0	0	4.38	1.19	2.62	26.9	26.9	10.0	10.0	0.35	1.03	0.09	2.71



Stellar Parameters For KIC 005908086

	$T_{\text{eff}}(K)$	$\log(g)$	[Fe/H]	R (R_{\odot})	M (M_{\odot})	p_{\star} ($\text{g}\cdot\text{cm}^{-3}$)
	6691^{+160}_{-200}	$3.088^{+0.586}_{-0.103}$	$0.070^{+0.200}_{-0.350}$	$7.781^{+1.519}_{-4.254}$	$2.703^{+0.296}_{-0.888}$	$0.008^{+0.058}_{-0.003}$
	+2%/-3%	+19%/-3%	+286%/-500%	+20%/-55%	+11%/-33%	+712%/-40%
Source	PHO1	FLK73	KIC0	DSEP		

KIC = Kepler Input Catalog; PHO = Photometry; SPE = Spectroscopy; AST = Asteroseismology
 TRA = Transits; DESP = Dartmouth Models; MULT = Multiple Models

Secondary Eclipse Parameters for KIC 005908086-01 / KOI 7563.01

Detrend	Depth (ppm)	R_p (R_{\oplus})	T_{max} (K)	T_{obs} (K)	A_{obs}
DV	-2 \pm 1	$3.01^{+0.81}_{-0.88}$	6870^{+543}_{-930}	-5122^{+1078}_{-530}	$0.101^{+0.101}_{-0.045}$
Alt.	-16 \pm 2	$5.31^{+1.14}_{-1.71}$	6912^{+504}_{-1064}	-4344^{+8413}_{-762}	$0.217^{+0.206}_{-0.069}$

T_{max} = Theoretical Maximum Planetary Temperature
 T_{obs} = Observed Planetary Temperature (Assuming A=0.3)
 A_{obs} = Observed Albedo (Assuming T=0)

If a secondary eclipse is present, the system is likely an EB if $T_{\text{obs}} \gg T_{\text{max}}$ AND $A_{\text{obs}} \gg 1.0$

DV Centroid Data

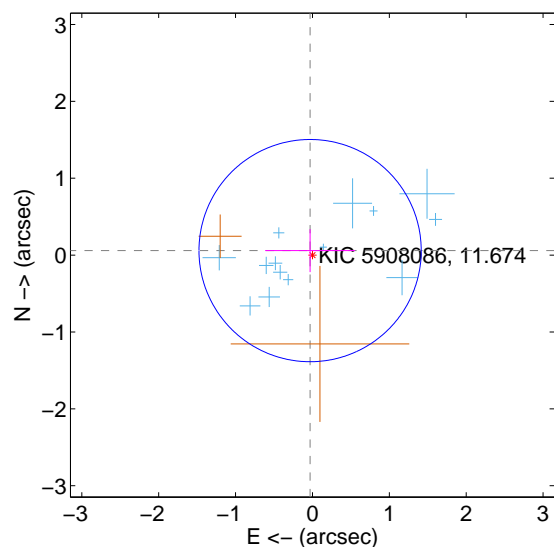
Supplemental centroid analysis for 005908086-01. **Kepler magnitude: 11.67.** Transit SNR 11.77

There are 14 quarters with good PRF difference image offsets

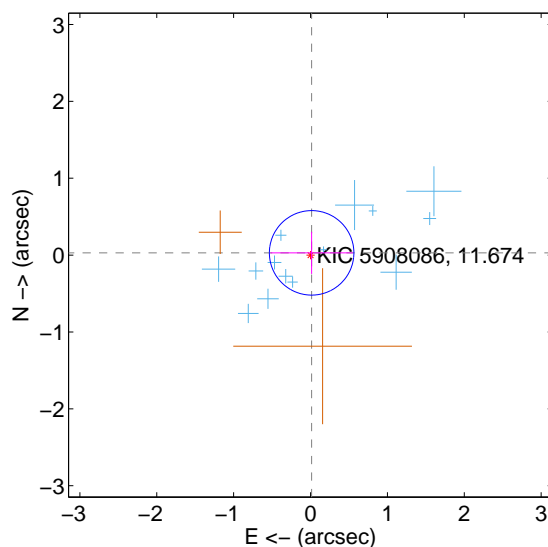
The direct PRF centroid is offset from the target star catalog position by about 0.07 arcsec

	Distance in arcsec	Distance / σ	Δ RA	Δ Dec
PRF-fit source offset from OOT	0.066 ± 0.482	0.14	0.030 ± 0.584	0.058 ± 0.280
PRF-fit source offset from KIC position	0.033 ± 0.183	0.18	-0.014 ± 0.536	0.029 ± 0.274
photometric centroid source offset	0.73 ± 0.63	1.15	-0.35 ± 0.76	0.64 ± 0.59

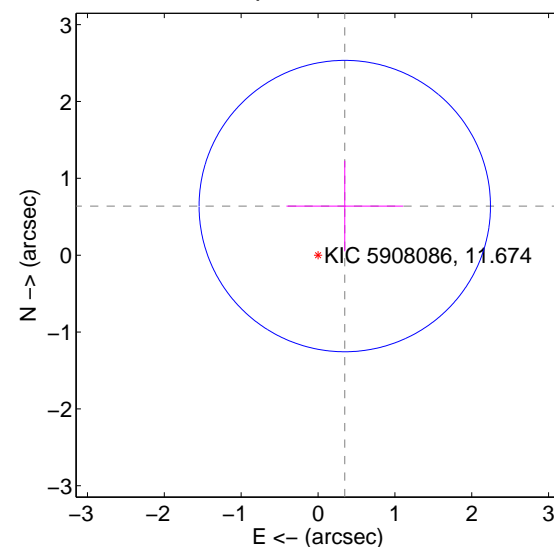
offset from difference PRF-fit to OOT PRF-fit



offset from difference PRF-fit to KIC position

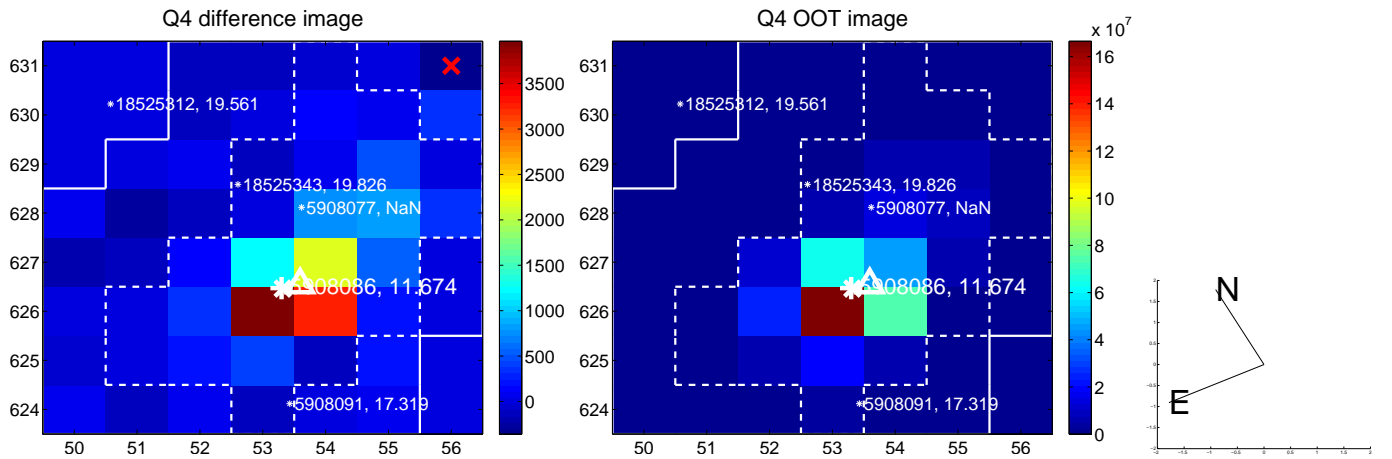
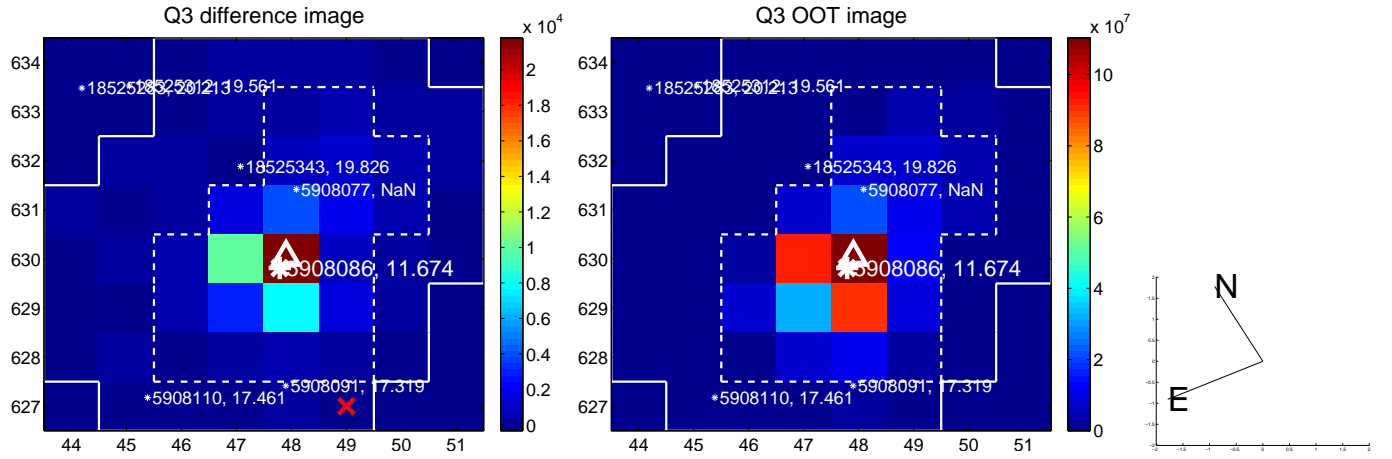
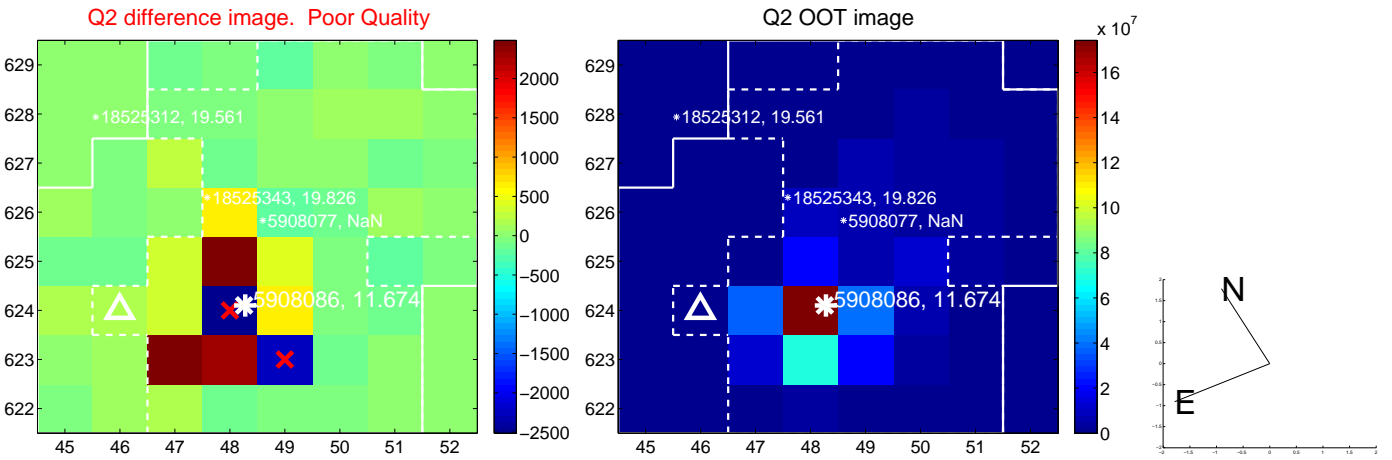
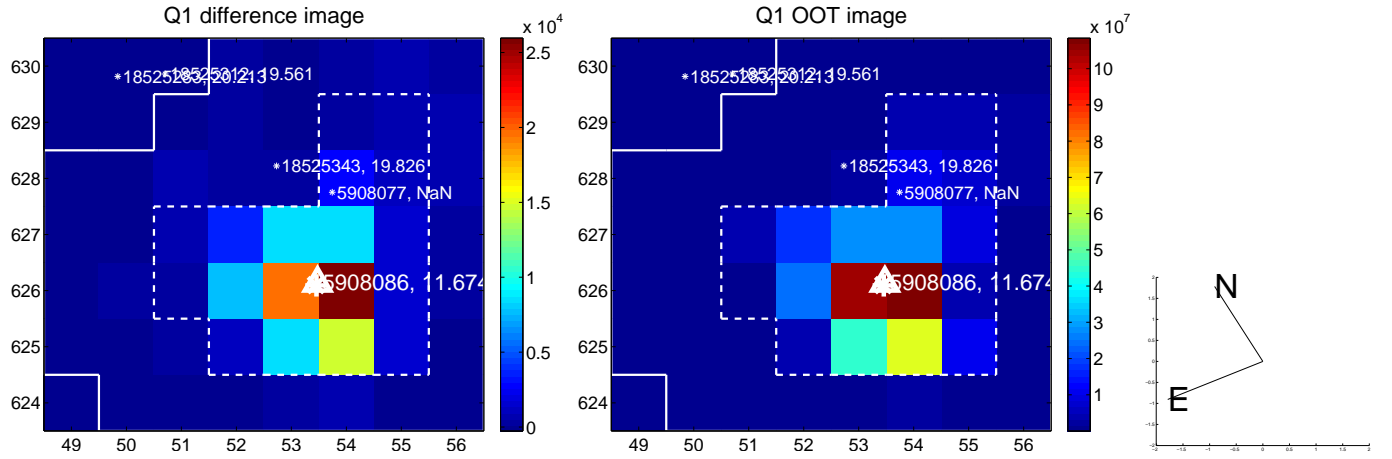


offset from photometric centroids

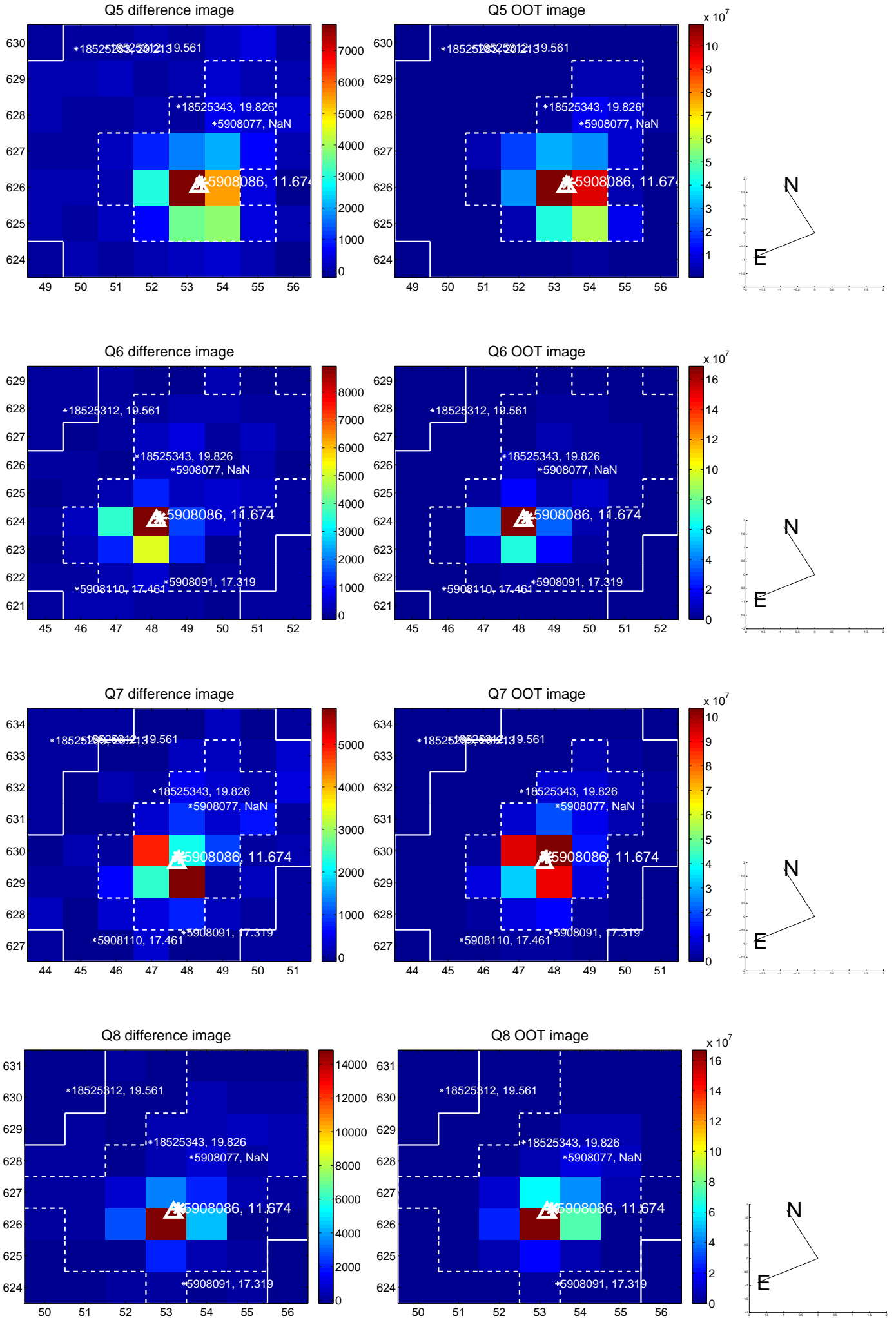


Centroid source offsets from the target star reconstructed from PRF and photometric centroids. **Sky blue crosses: good quarterly centroid offsets; Vermillion crosses: bad quarterly centroid offsets;** magenta cross: average over quarters. Length of the crosses: one- σ uncertainty. Blue circle: three- σ . Red *: target star. Blue *: Other stars. Text next to a star gives its KIC ID and kepmag. KIC IDs > 15,000,000 are from the UKIRT catalog.

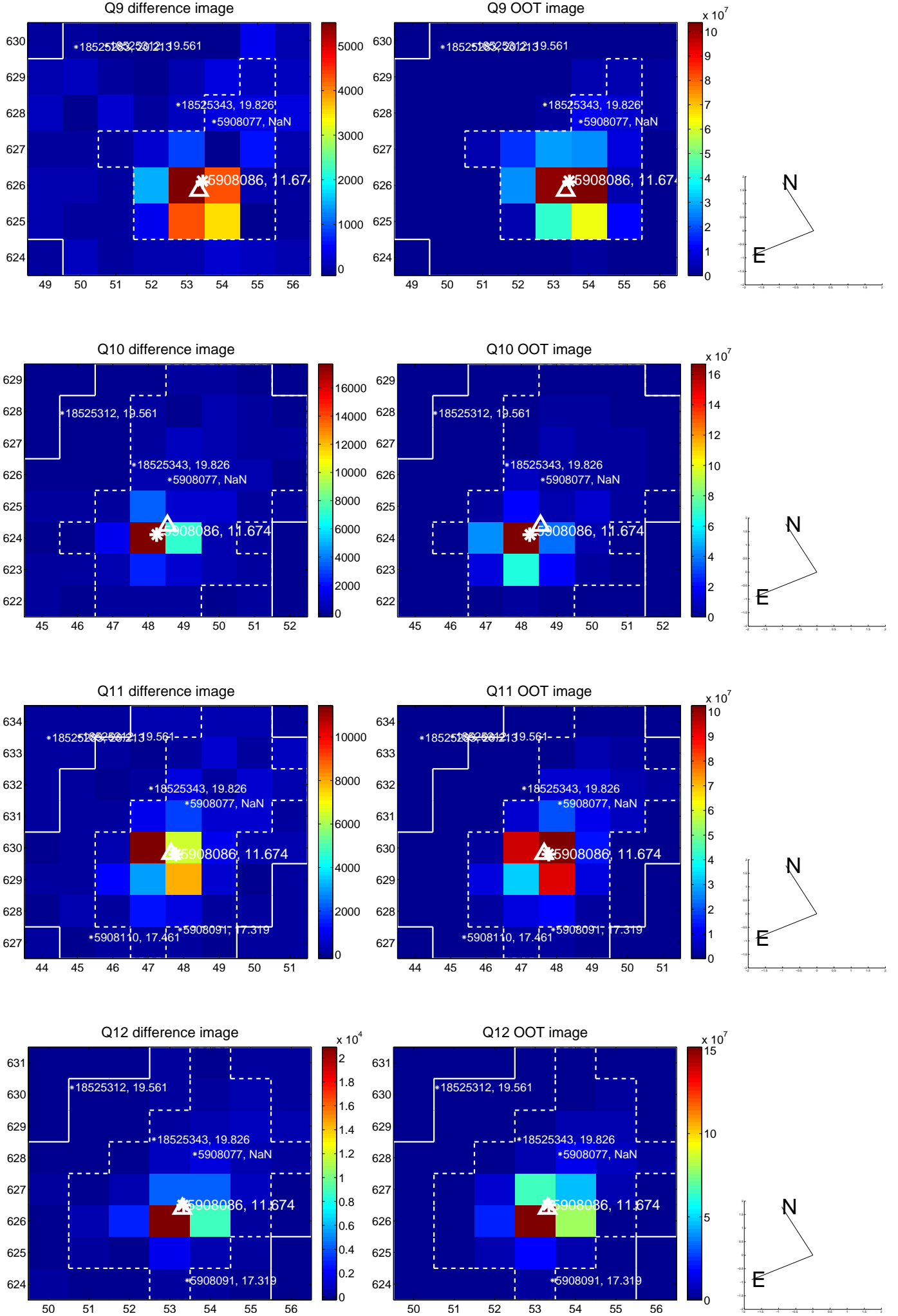
white \times : KIC target position; +: OOT centroid; \triangle : difference centroid. red \times : large negative pixel value.



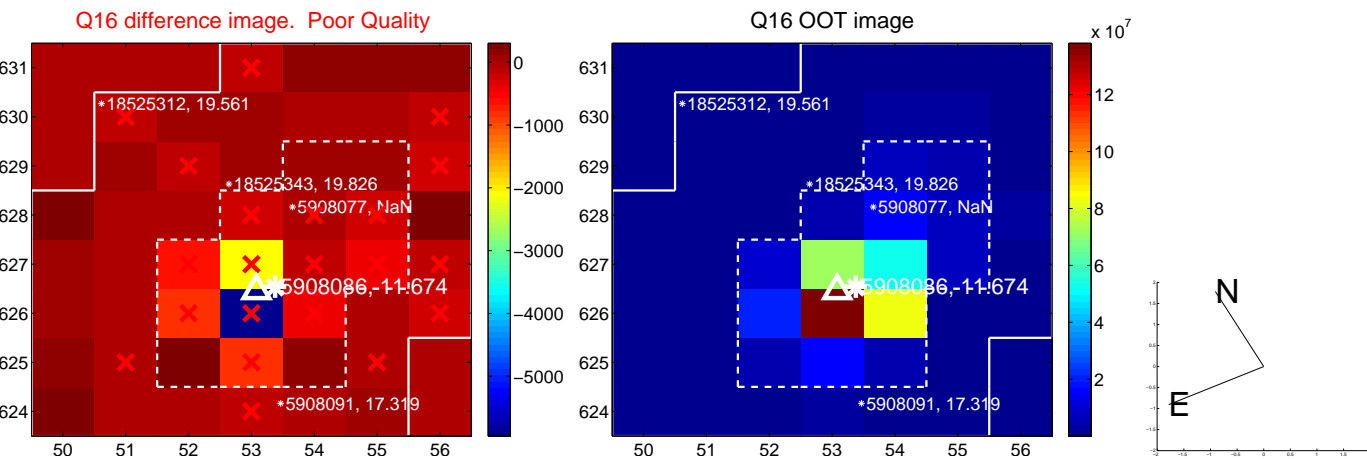
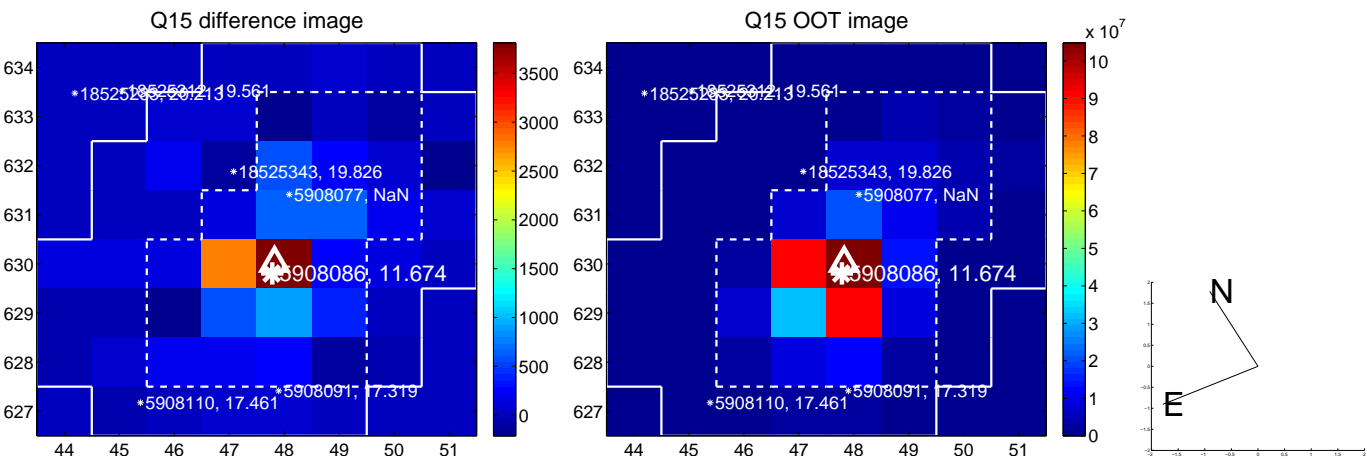
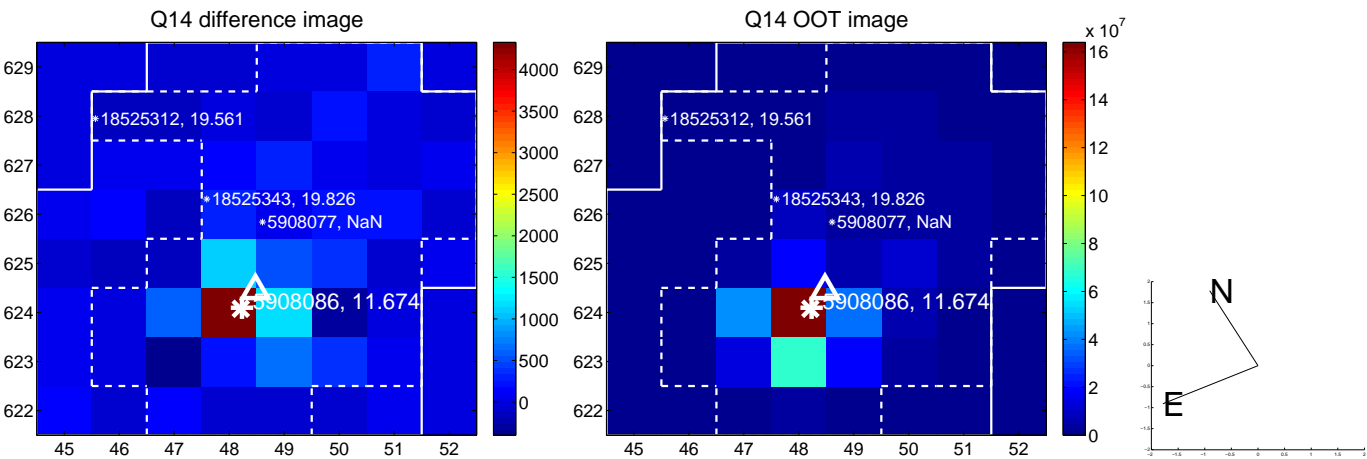
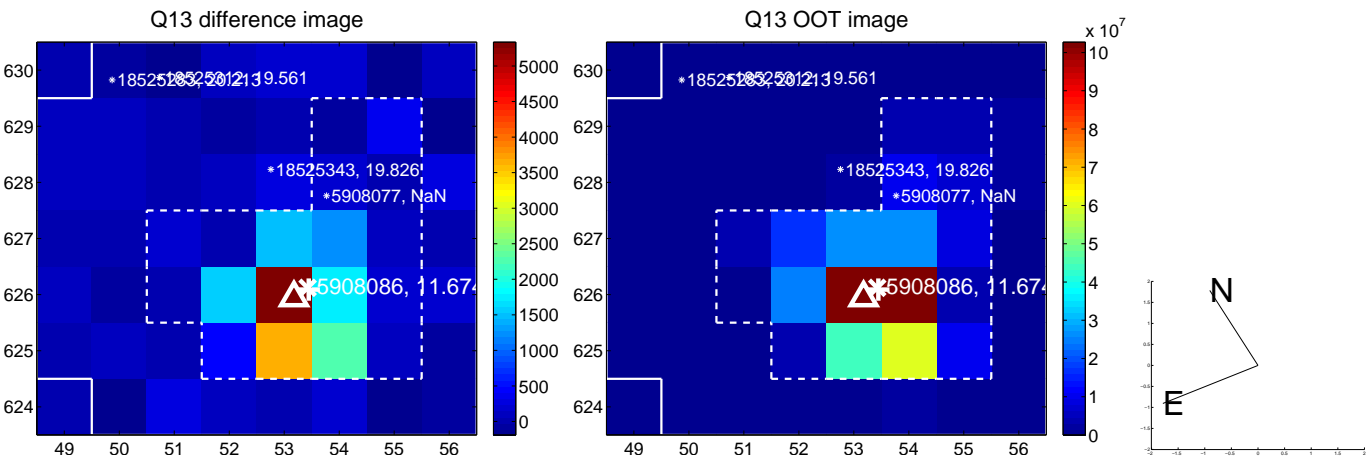
white \times : KIC target position; +: OOT centroid; \triangle : difference centroid. red \times : large negative pixel value.



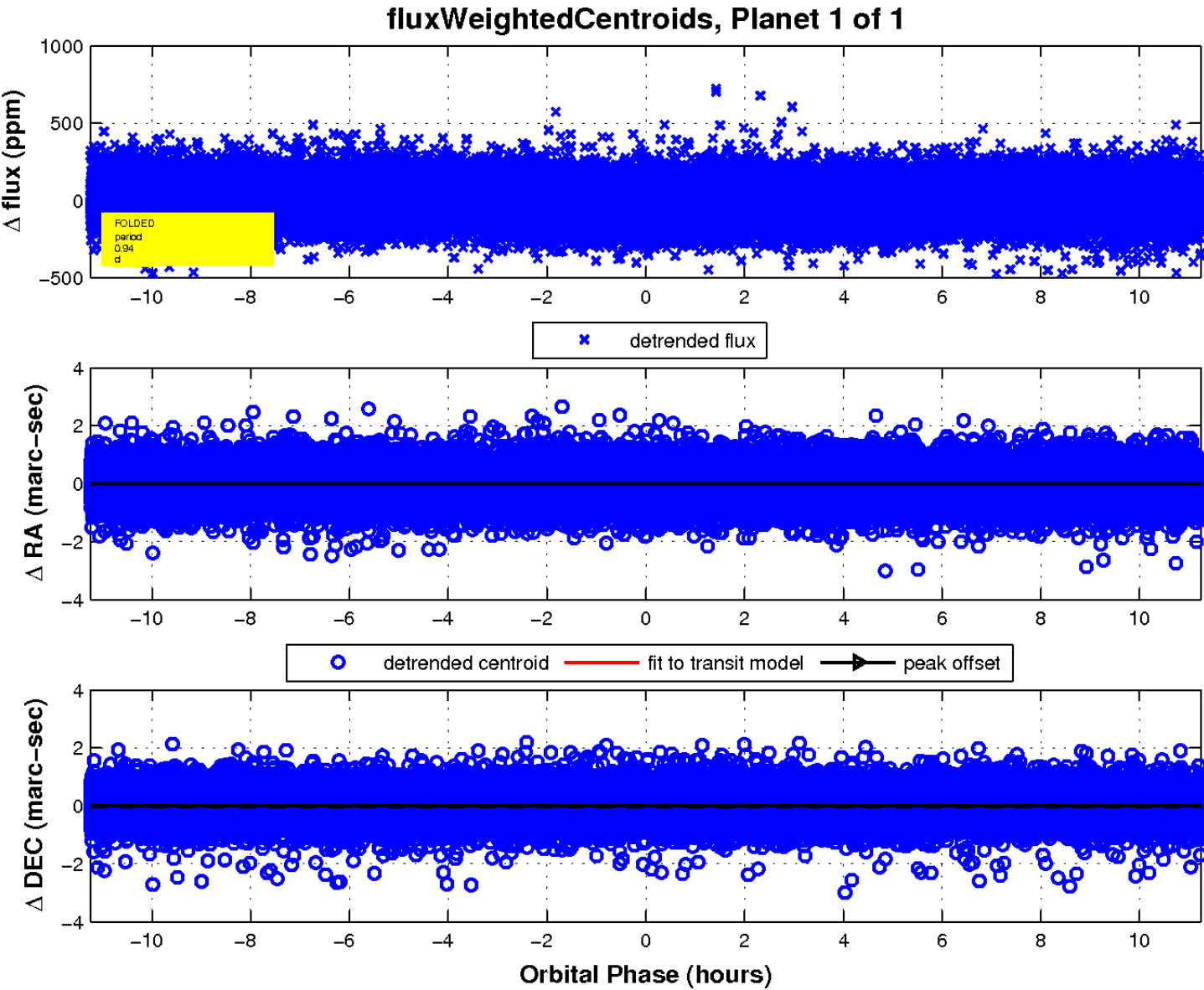
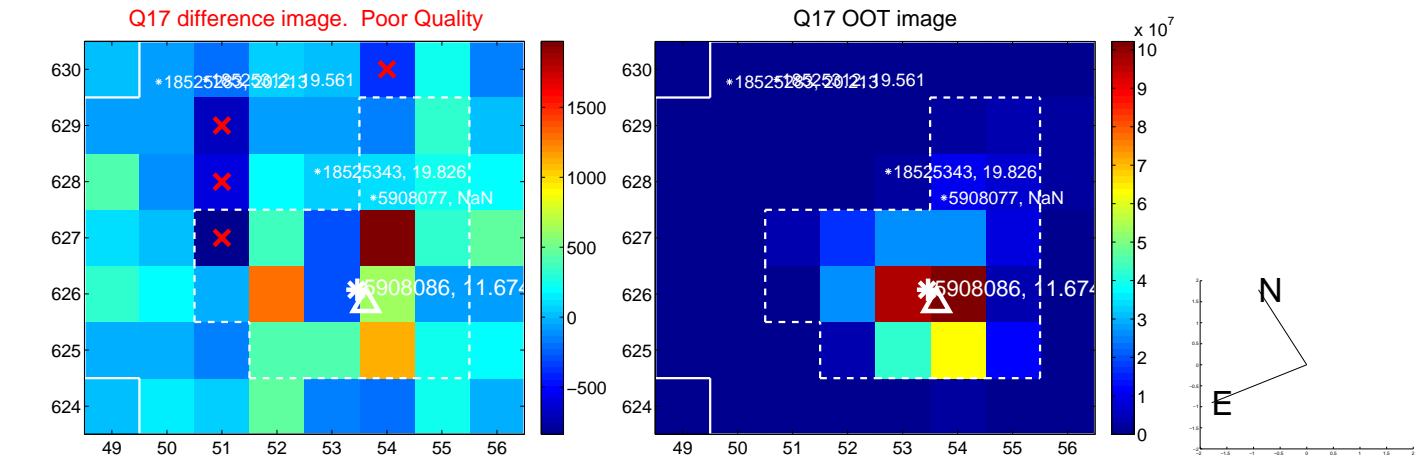
white \times : KIC target position; +: OOT centroid; \triangle : difference centroid. red \times : large negative pixel value.



white \times : KIC target position; +: OOT centroid; \triangle : difference centroid. red \times : large negative pixel value.



white \times : KIC target position; +: OOT centroid; \triangle : difference centroid. red \times : large negative pixel value.



UKIRT Image

