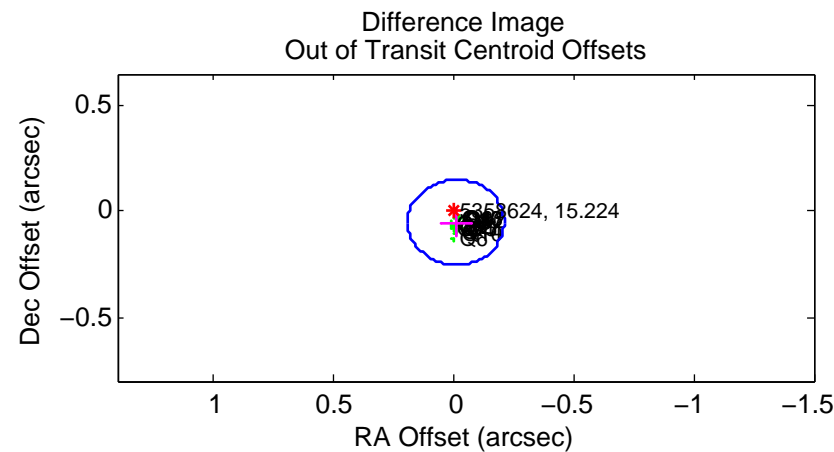
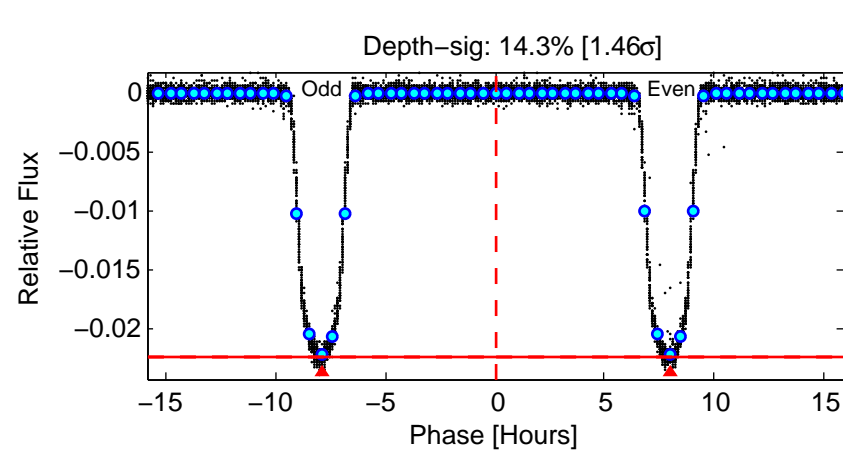
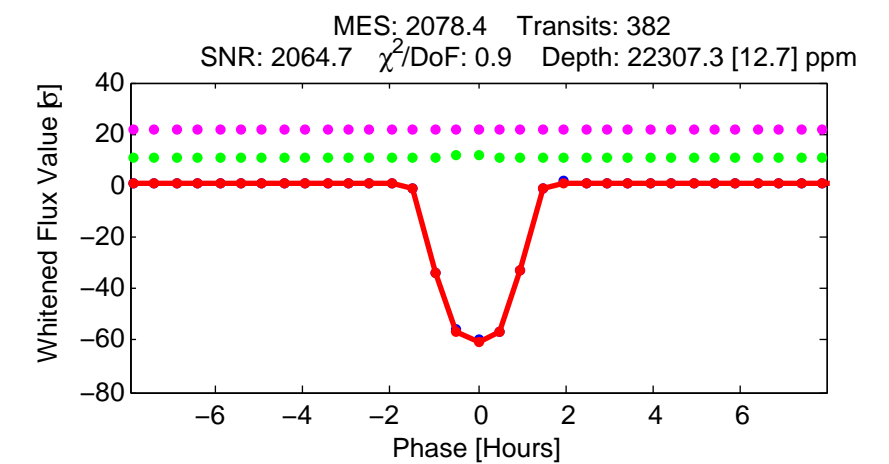
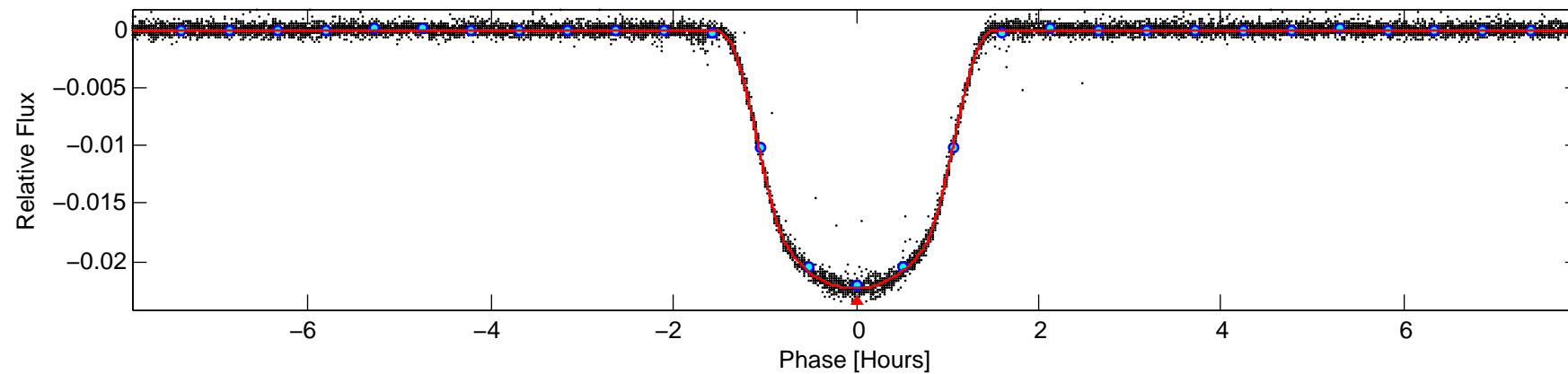
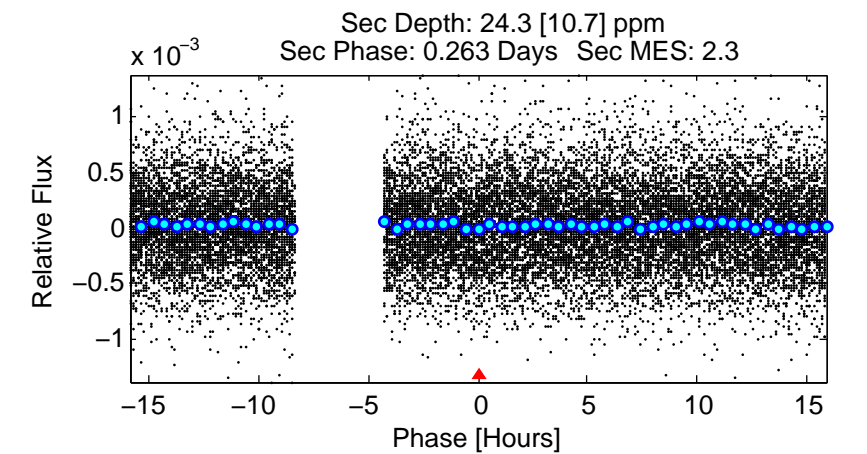
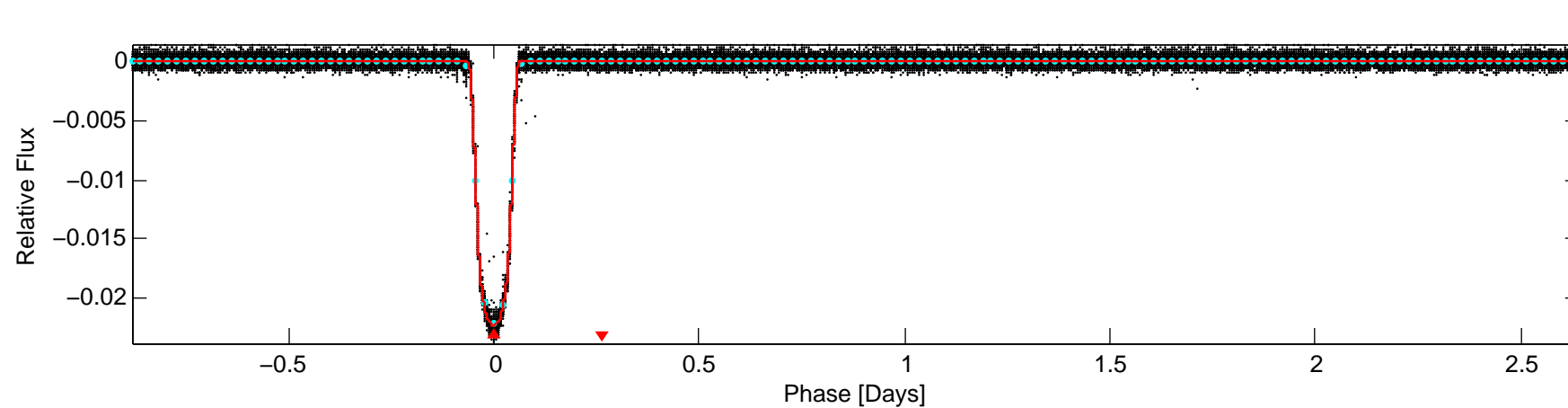
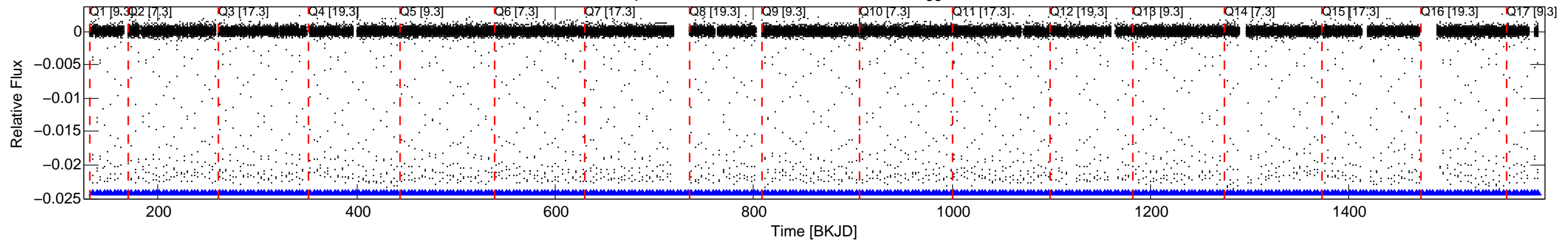


KIC: 5358624 Candidate: 1 of 1 Period: 3.526 d
 KOI: K00830.01 Name: Kepler-428b Corr: 0.994

Kp: 15.22 R*: 0.79 Rs Teff: 5150.0 K Logg: 4.57 Fe/H: 0.080



DV Fit Results:

Period = 3.52563 [0.00000] d
 Epoch = 134.7917 [0.0000] BKJD
 Rp/R* = 0.1358 [0.0003]
 a/R* = 11.03 [0.08]
 b = 0.35 [0.02]
 Seff = 213.79 [27.40]
 Teq = 975 [31] K
 Rp = 11.75 [0.92] Re
 a = 0.0431 [0.0031] AU
 Ag = 0.18 [0.08] [-10.10σ]
 Teffp = 982 [109] K [0.06σ]

DV Diagnostic Results:

ShortPeriod-sig: N/A
 LongPeriod-sig: N/A
 ModelChiSquare2-sig: N/A
 ModelChiSquareGof-sig: N/A
 Bootstrap-pfa: 0.00e+00
 RollingBand-fgt: 1.00 [365/365]
 GhostDiagnostic-chr: 8.059
 Centroid-sig: 0.0%
 Centroid-so: 0.202 arcsec [31.34σ]
 OotOffset-rm: 0.053 arcsec [0.79σ]
 KicOffset-rm: 0.233 arcsec [3.34σ]
 OotOffset-st: 4/4/4/5 [17]
 KicOffset-st: 4/4/4/5 [17]
 DiffImageQuality-fgm: 1.00 [17/17]
 DiffImageOverlap-fno: 1.00 [17/17]