

KIC 005301075

Q1-17 DR25 TCE Parameters

TCE	Run Type	KOI?	Period (Days)	Epoch (BKJD)	Depth (ppm)	Duration (Hours)	MES	SNR	R_{\star} (R_{\odot})	T_{\star} (K)	R_p (R_{\oplus})	S_p (S_{\oplus})
005301075-01	OBS	No	0.572738	131.848145	32.5	2.080	9.3	7.5	12.58	6561	7.78	0.00

Robovetter Results

TCE	Run Type	Disp	Score	N	S	C	E	Comments
005301075-01	OBS	FP	0.00	1	0	0	0	LPP_DV

Notes: OBS = Observed. INJ = Injected. INV = Inverted. SCR = Scrambled.

N = Not Transit-Like. S = Stellar Eclipse. C = Centroid Offset. E = Ephemeris Match.

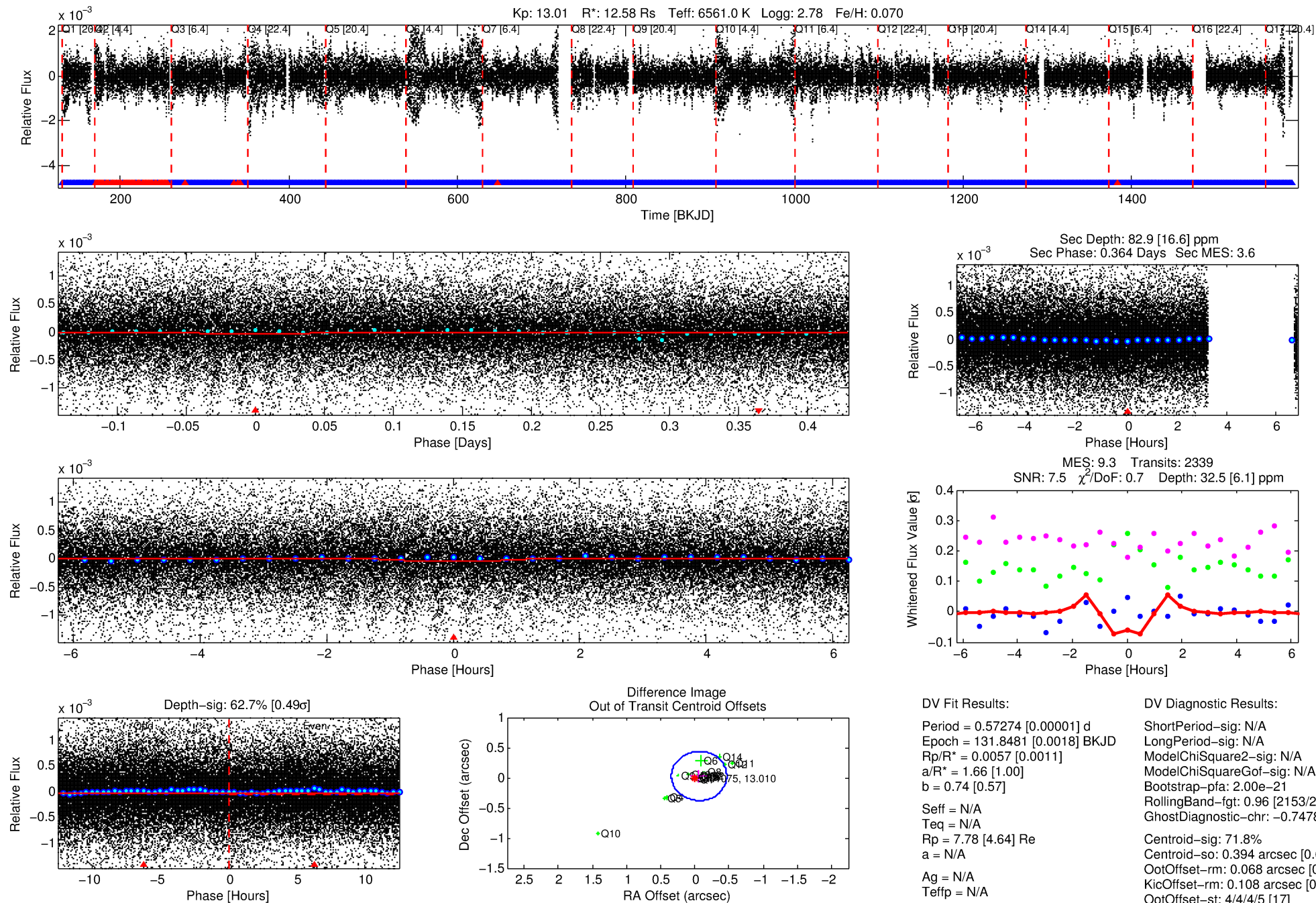
See http://exoplanetarchive.ipac.caltech.edu/docs/API_kepcandidate_columns.html#proj_disp_col for comment definitions.

Ephemeris Match Information For 005301075-01

No Significant Match Found

DV One-Page Summary

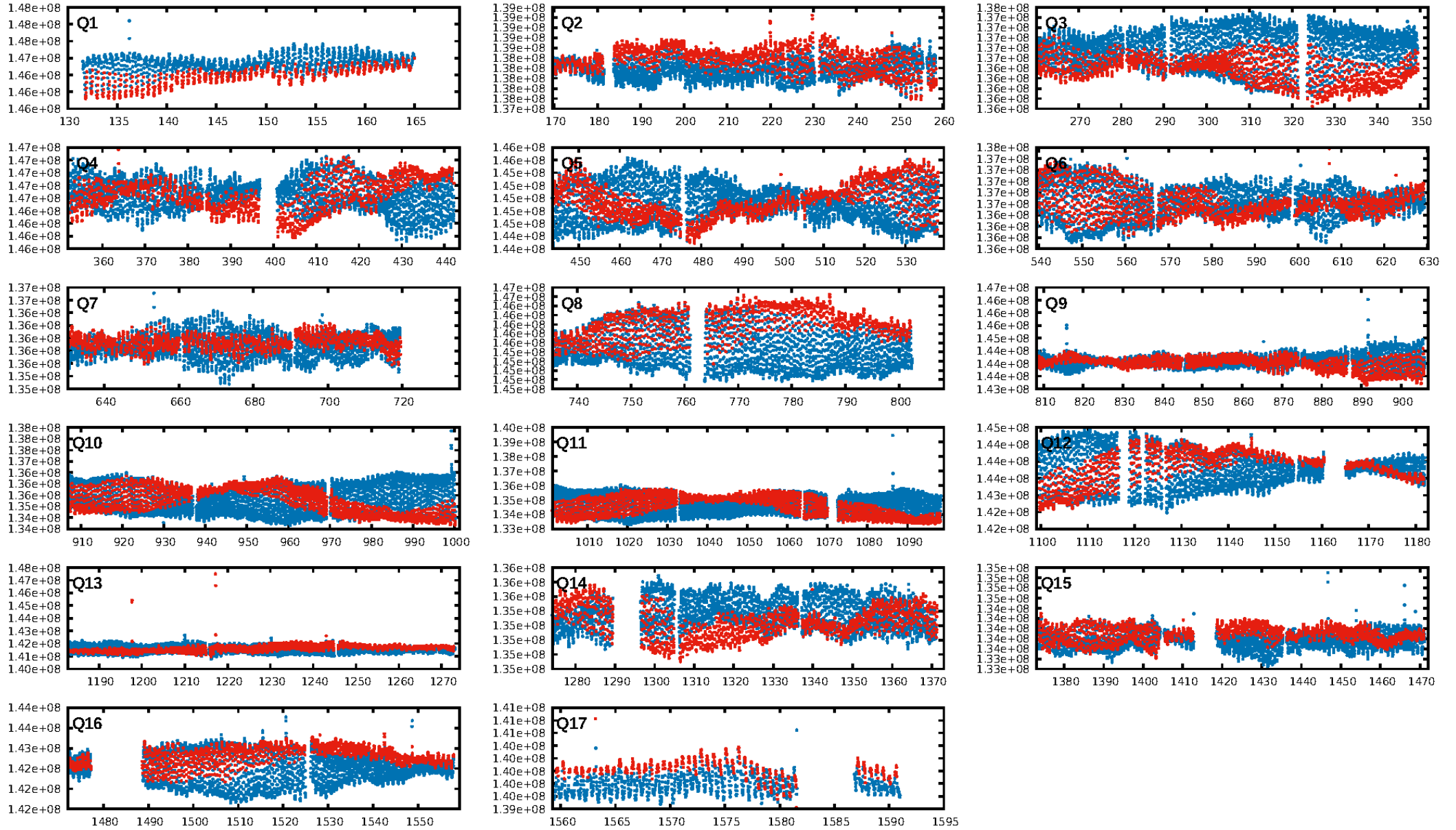
KIC: 5301075 Candidate: 1 of 1 Period: 0.573 d



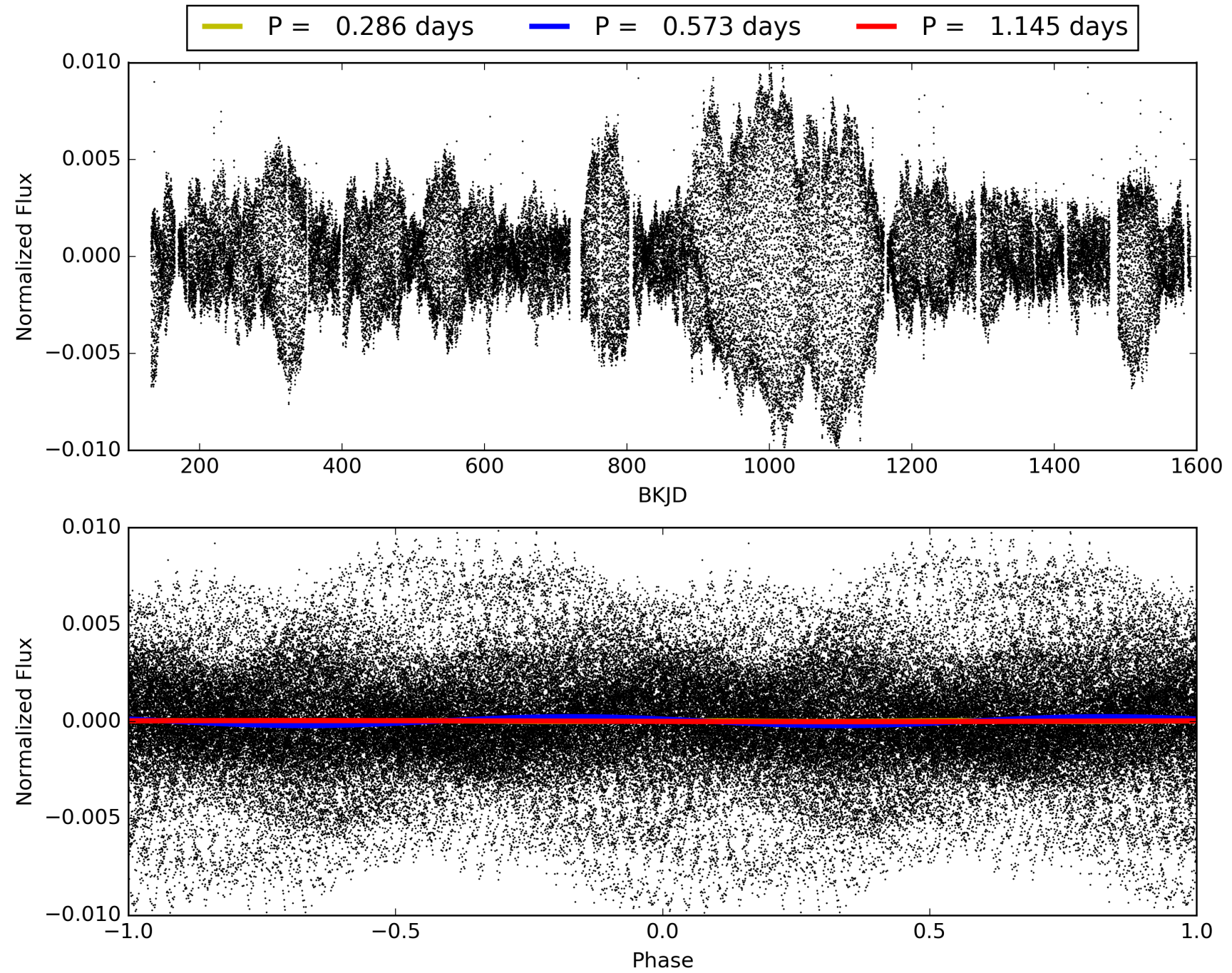
Software Revision: svn+ssh://murzim/repo/soc/tags/release/9.3.42@60958 -- Date Generated: 29-Jan-2016 15:39:13 Z

This Data Validation Report Summary was produced in the Kepler Science Operations Center Pipeline at NASA Ames Research Center

TCE 005301075-01, PDC Light Curves

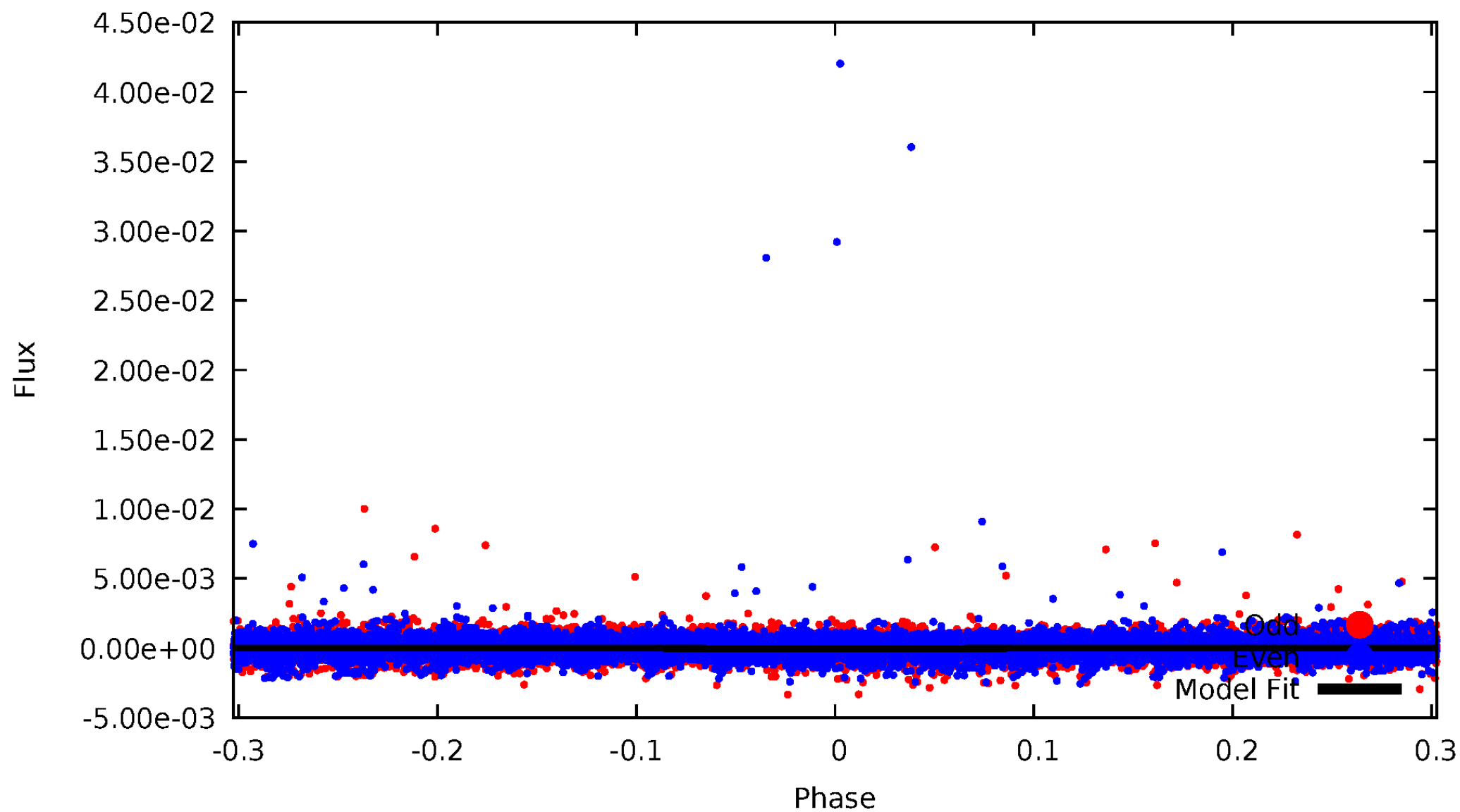


TCE 005301075-01



DV Odd/Even

TCE 005301075-01

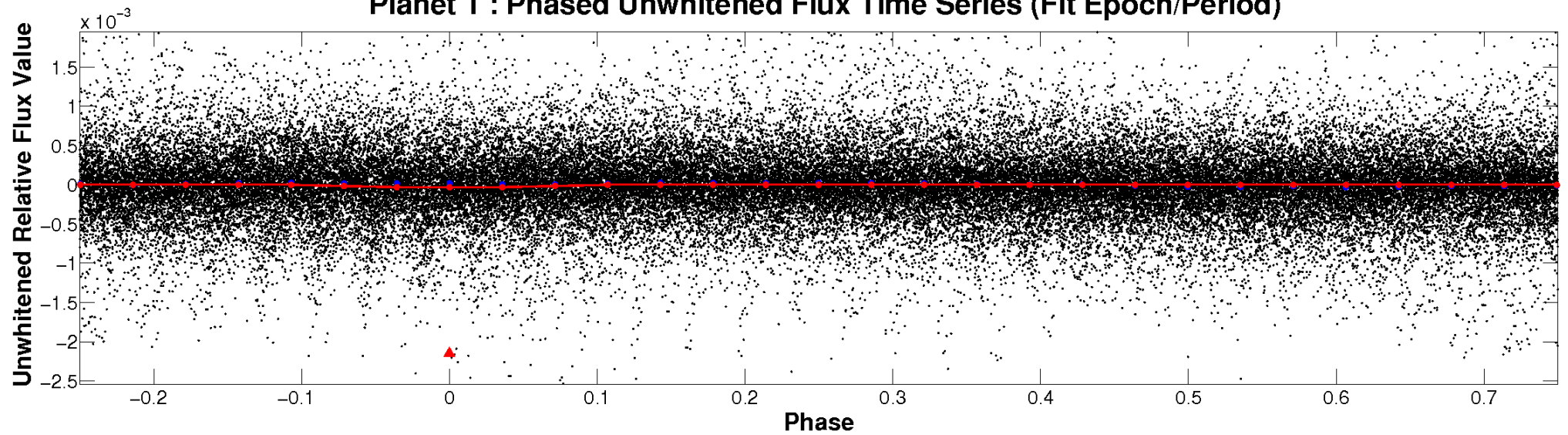


ALT Odd/Even

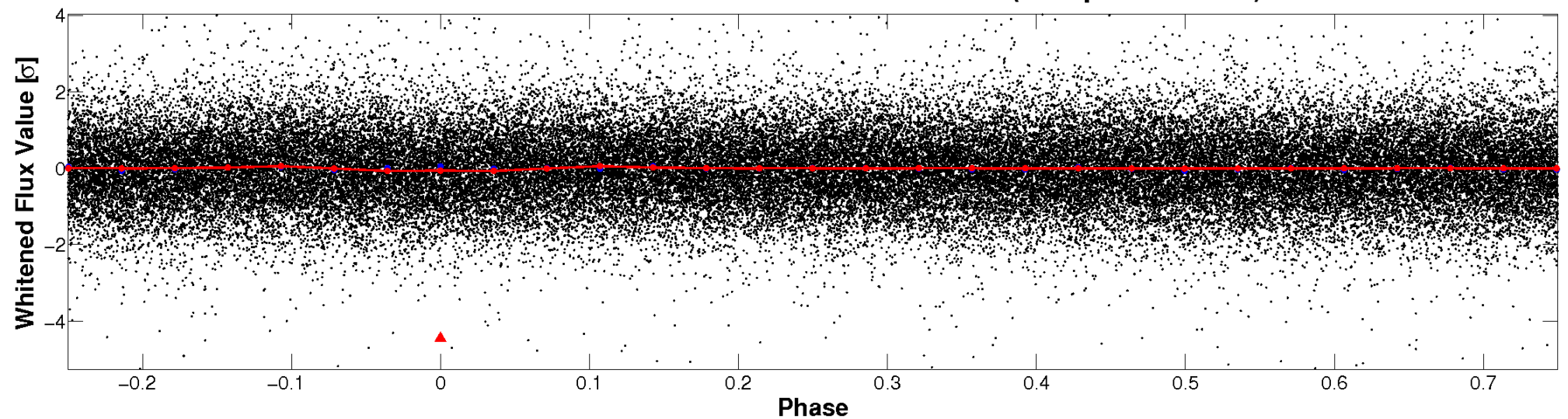
This plot does not exist for this TCE.

Non-Whitened Vs. Whitened Light Curve

Planet 1 : Phased Unwhitened Flux Time Series (Fit Epoch/Period)

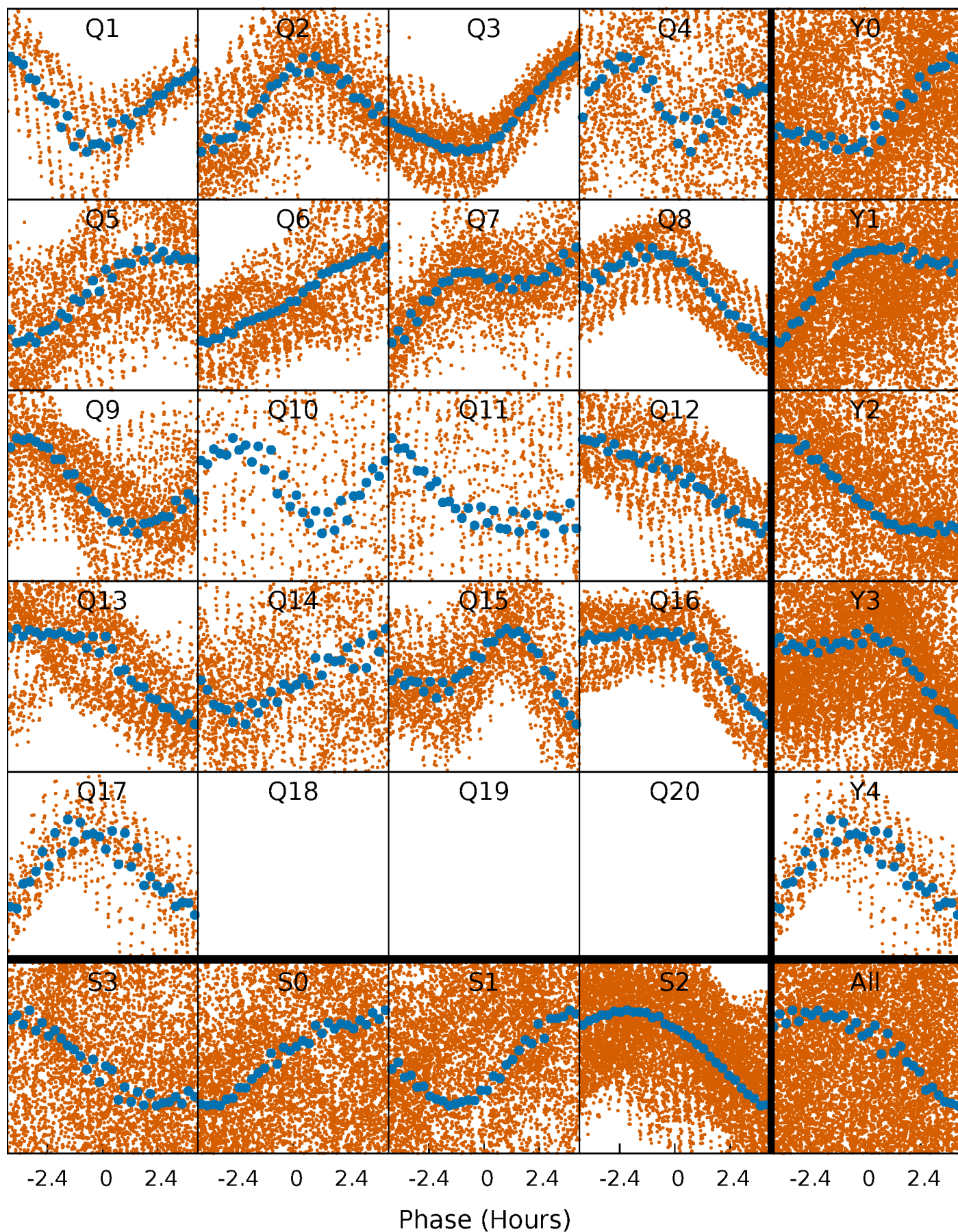


Planet 1 : Phased Whitened Flux Time Series (Fit Epoch/Period)



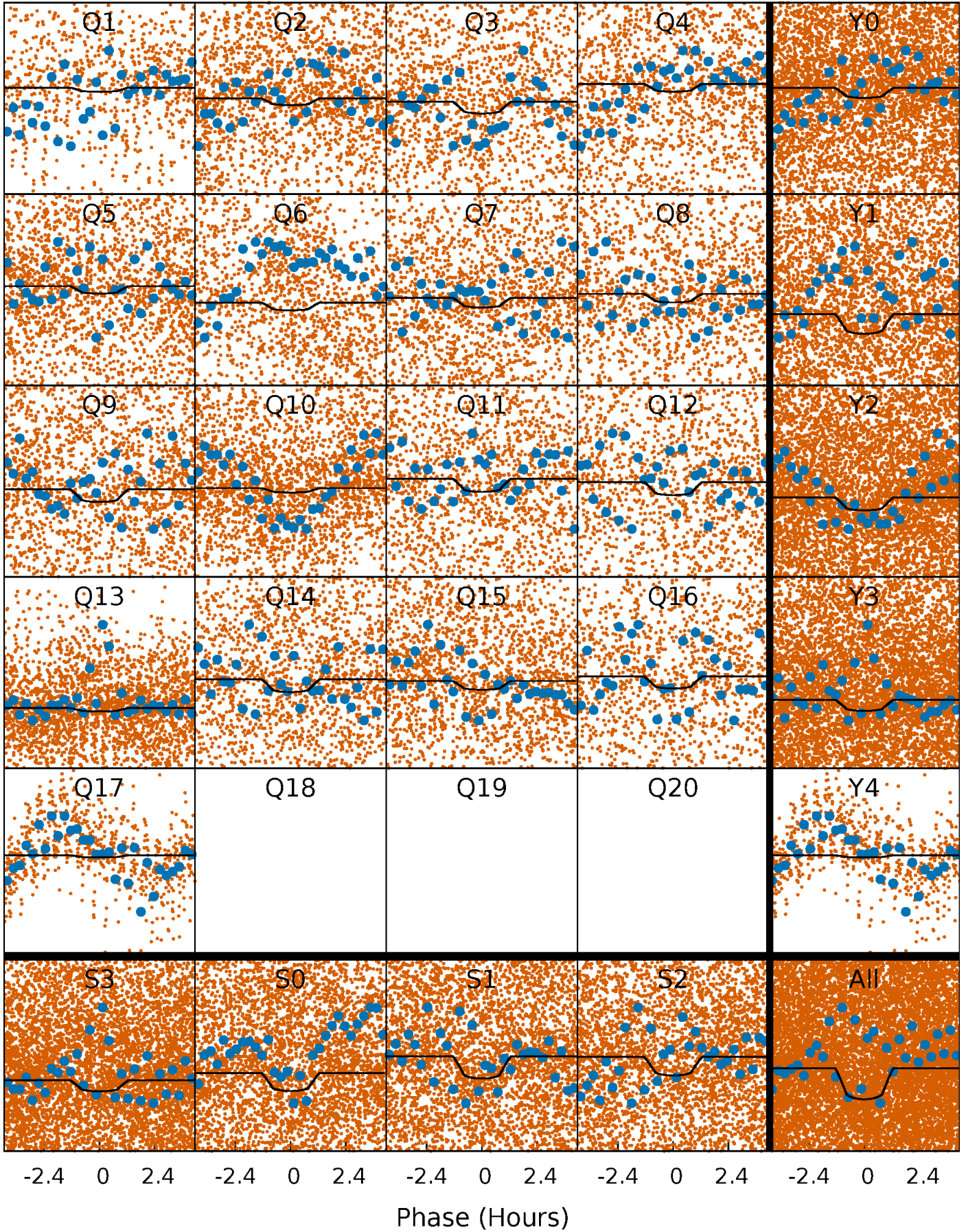
PDC Quarter-Phased Transit Curves

TCE 005301075-01 P= 0.572738 Days $T_0=131.848145$ (BKJD)



DV Quarter-Phased Transit Curves

TCE 005301075-01 P= 0.572738 Days $T_0=131.848145$ (BKJD)

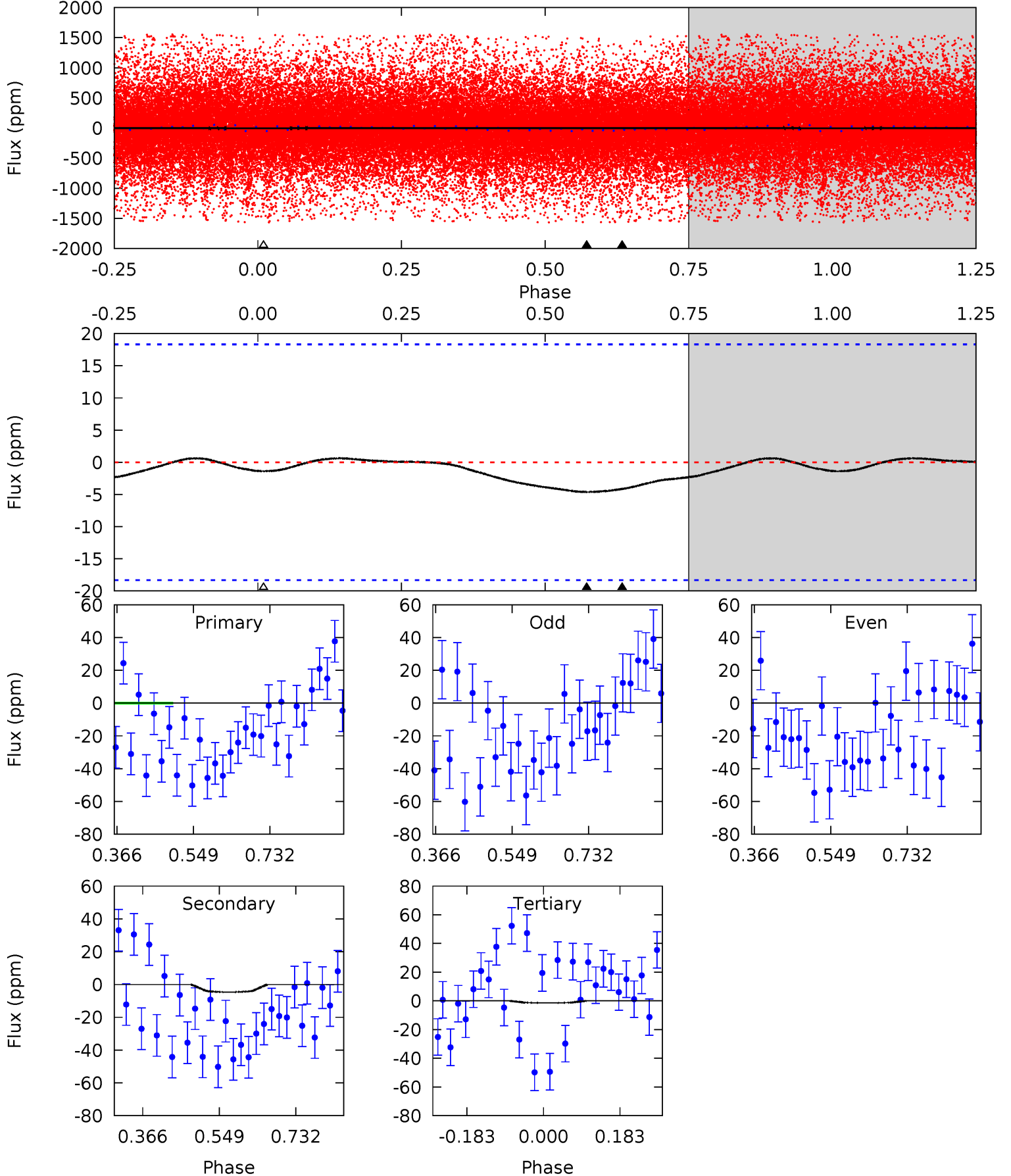


This plot does not exist for this TCE.

DV Model-Shift Uniqueness Test

005301075-01, $P = 0.572738$ Days, $E = 131.275407$ Days

Pri	Sec	Ter	Pos	FA ₁	FA ₂	F _{Red}	Pri-Ter	Pri-Pos	Sec-Ter	Sec-Pos	Odd-Evn	DMM	Shape	TAT
1.01	1.12	0.34	0	4.44	1.33	0.15	0.67	1.01	0.78	1.12	0.76	3.14	0.12	0.21



Alt Model-Shift Uniqueness Test

This plot does not exist for this TCE.

Stellar Parameters For KIC 005301075

	$T_{\text{eff}}(K)$	$\log(g)$	[Fe/H]	R (R_{\odot})	$M(M_{\odot})$	p_{\star} ($\text{g}\cdot\text{cm}^{-3}$)
	6561^{+183}_{-252}	$2.780^{+0.467}_{-0.055}$	$0.070^{+0.150}_{-0.600}$	$12.579^{+0.791}_{-7.118}$	$3.479^{+0.070}_{-1.385}$	$0.002^{+0.014}_{-0.000}$
	+3%/-4%	+17%/-2%	+214%/-857%	+6%/-57%	+2%/-40%	+574%/-19%
Source	PHO1	FLK73	KIC0	DSEP		

KIC = Kepler Input Catalog; PHO = Photometry; SPE = Spectroscopy; AST = Asteroseismology
 TRA = Transits; DESP = Dartmouth Models; MULT = Multiple Models

Secondary Eclipse Parameters for KIC 005301075-01 / KOI

Detrend	Depth (ppm)	R_p (R_{\oplus})	T_{max} (K)	T_{obs} (K)	A_{obs}
DV	-5 ± 4	$6.93^{+1.96}_{-2.01}$	9731^{+559}_{-1280}	-8027^{+1354}_{-636}	$0.020^{+0.033}_{-0.018}$
Alt.	N/A	N/A	N/A	N/A	N/A

T_{max} = Theoretical Maximum Planetary Temperature

T_{obs} = Observed Planetary Temperature (Assuming $A=0.3$)

A_{obs} = Observed Albedo (Assuming $T=0$)

If a secondary eclipse is present, the system is likely an EB if $T_{\text{obs}} \gg T_{\text{max}}$ AND $A_{\text{obs}} \gg 1.0$

DV Centroid Data

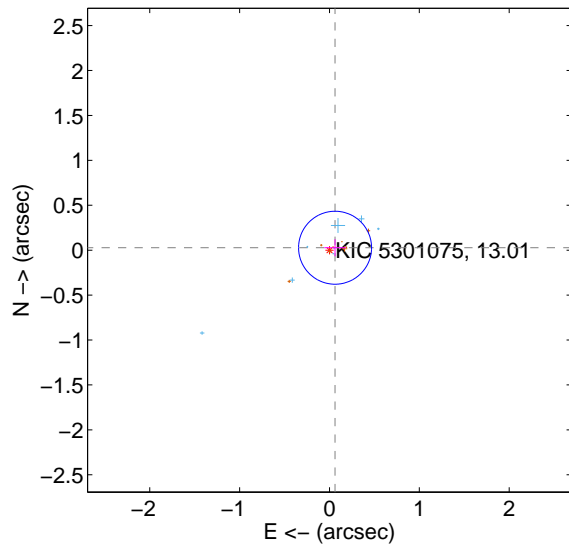
Supplemental centroid analysis for 005301075-01. Kepler magnitude: 13.01. Transit SNR 7.54

There are 8 quarters with good PRF difference image offsets

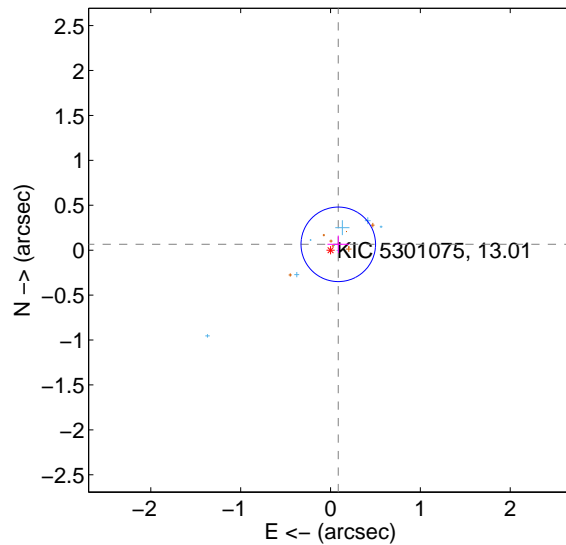
The direct PRF centroid is offset from the target star catalog position by about 0.12 arcsec

	Distance in arcsec	Distance / σ	Δ RA	Δ Dec
PRF-fit source offset from OOT	0.068 ± 0.135	0.50	-0.062 ± 0.121	0.027 ± 0.095
PRF-fit source offset from KIC position	0.108 ± 0.138	0.78	-0.086 ± 0.121	0.065 ± 0.097
photometric centroid source offset	0.39 ± 0.62	0.64	-0.32 ± 0.63	0.22 ± 0.59

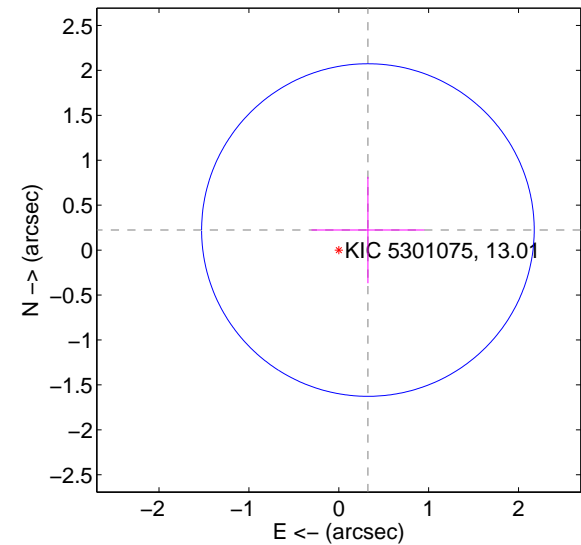
offset from difference PRF-fit to OOT PRF-fit



offset from difference PRF-fit to KIC position

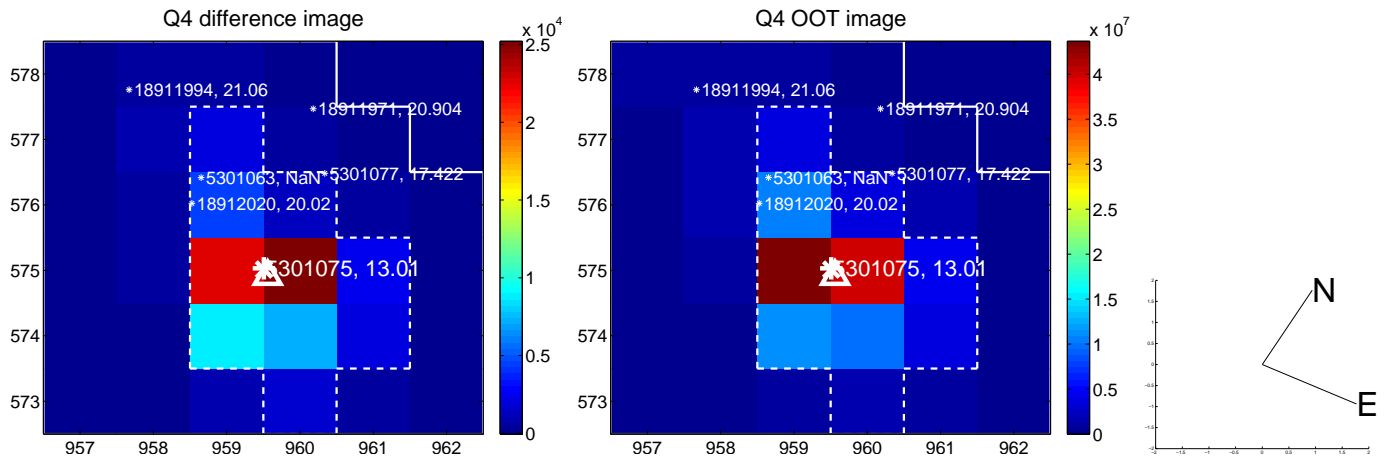
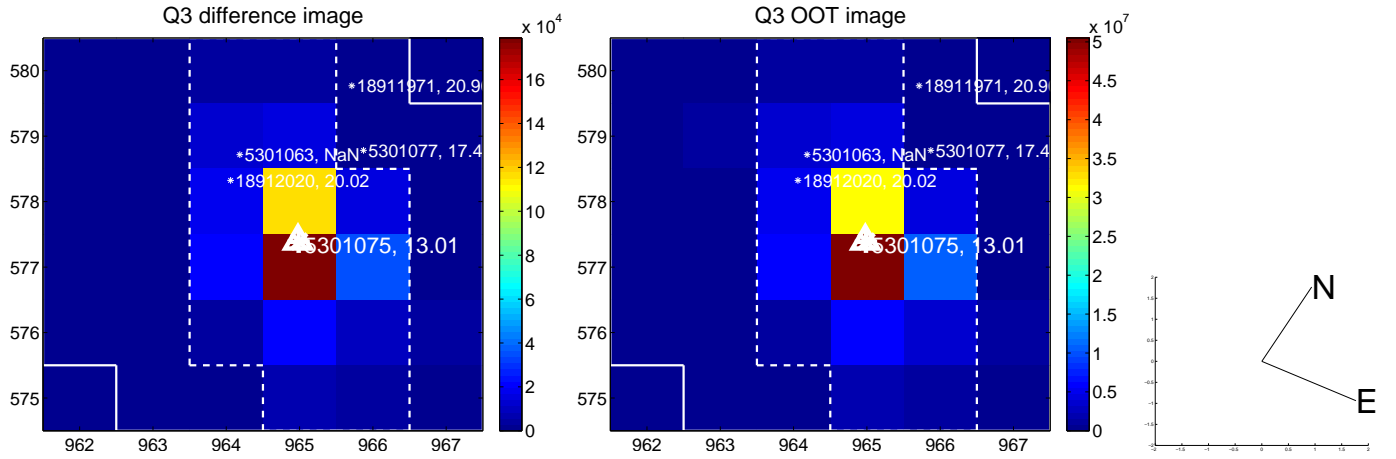
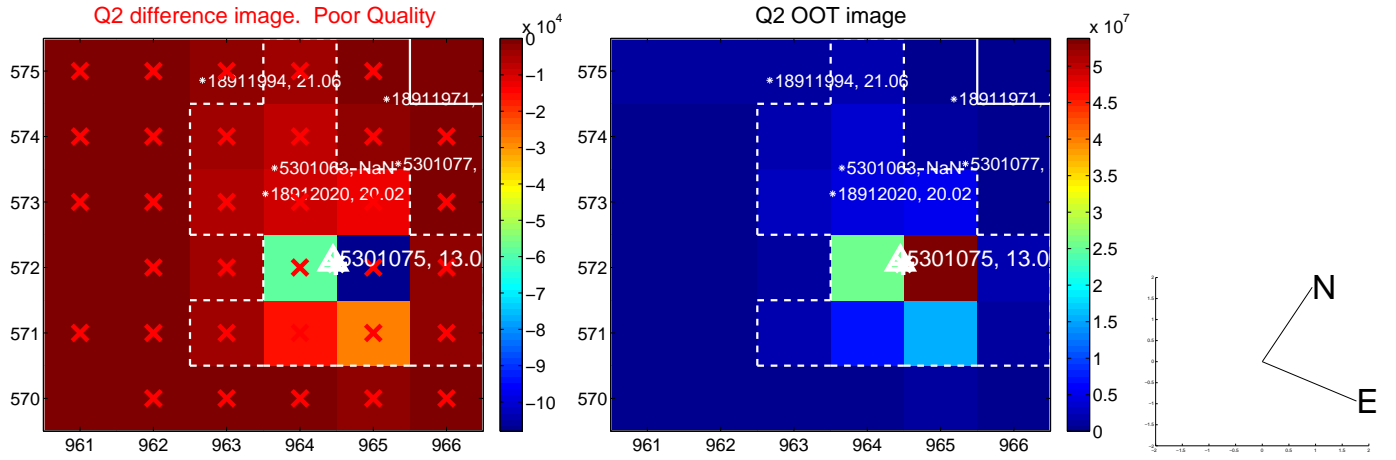
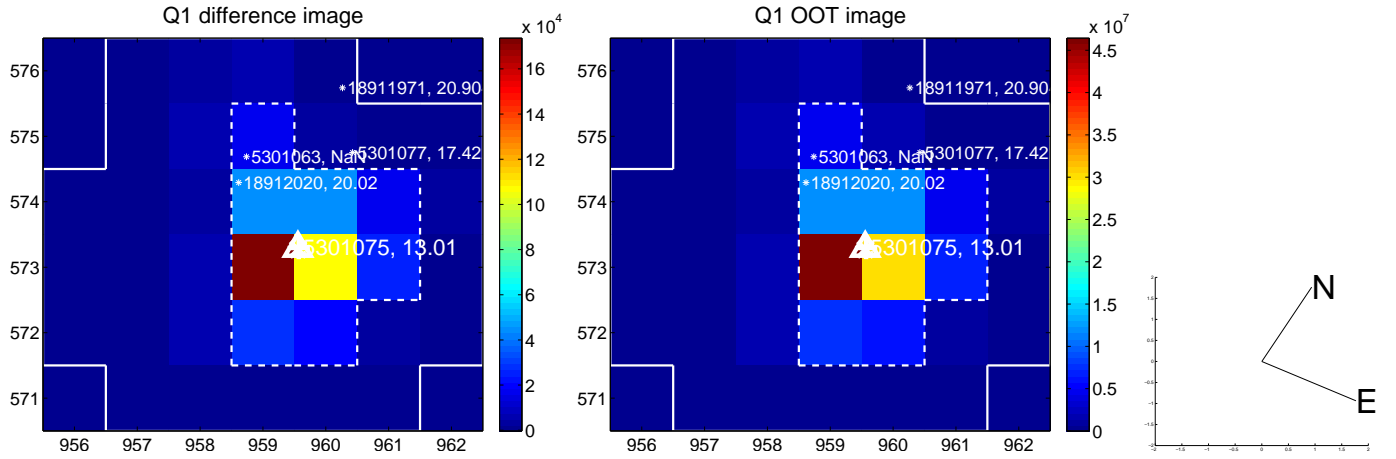


offset from photometric centroids

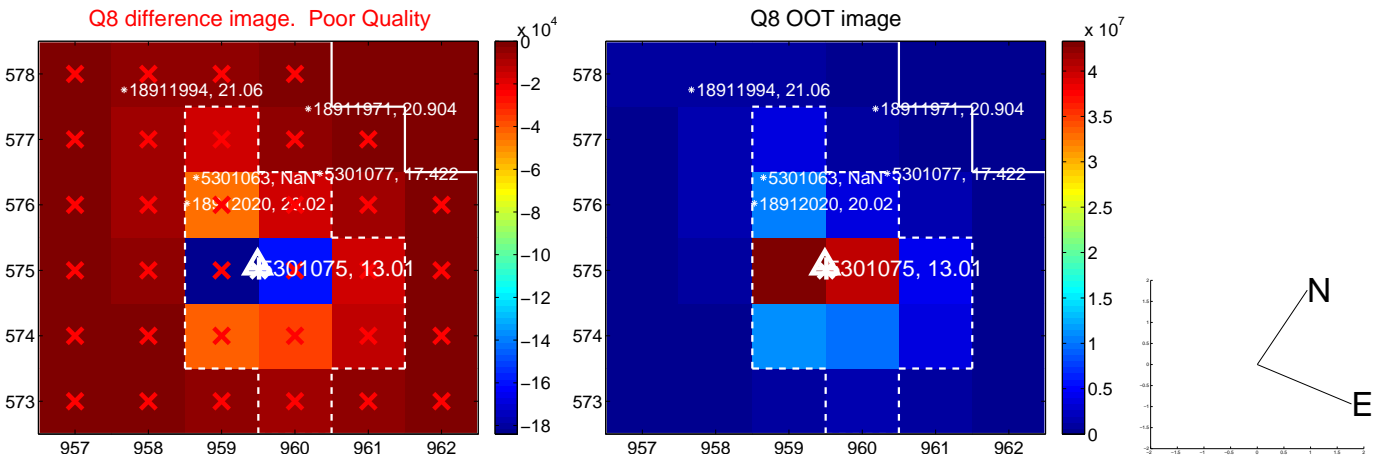
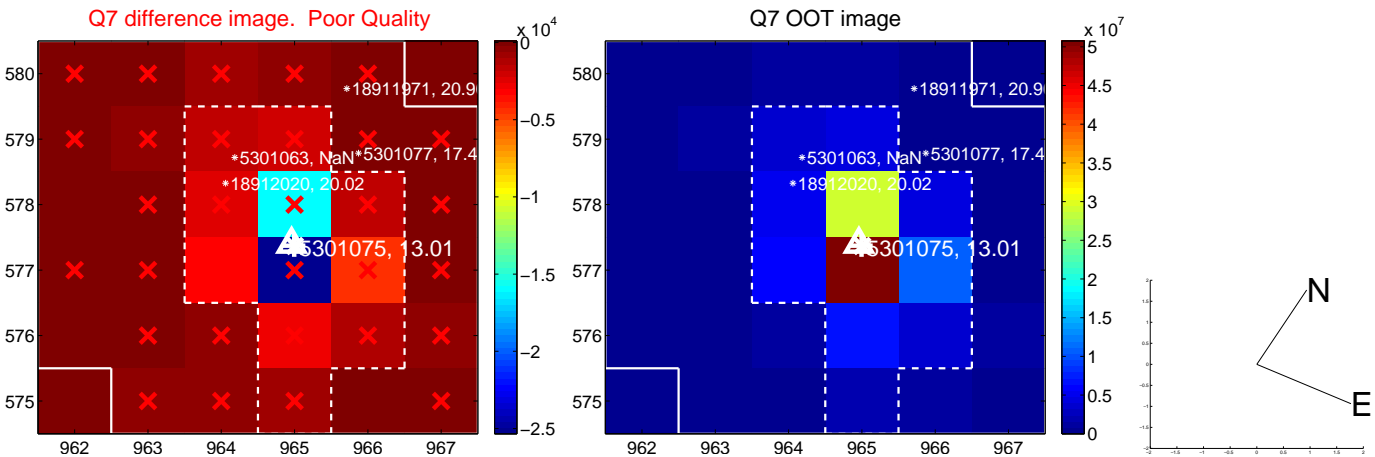
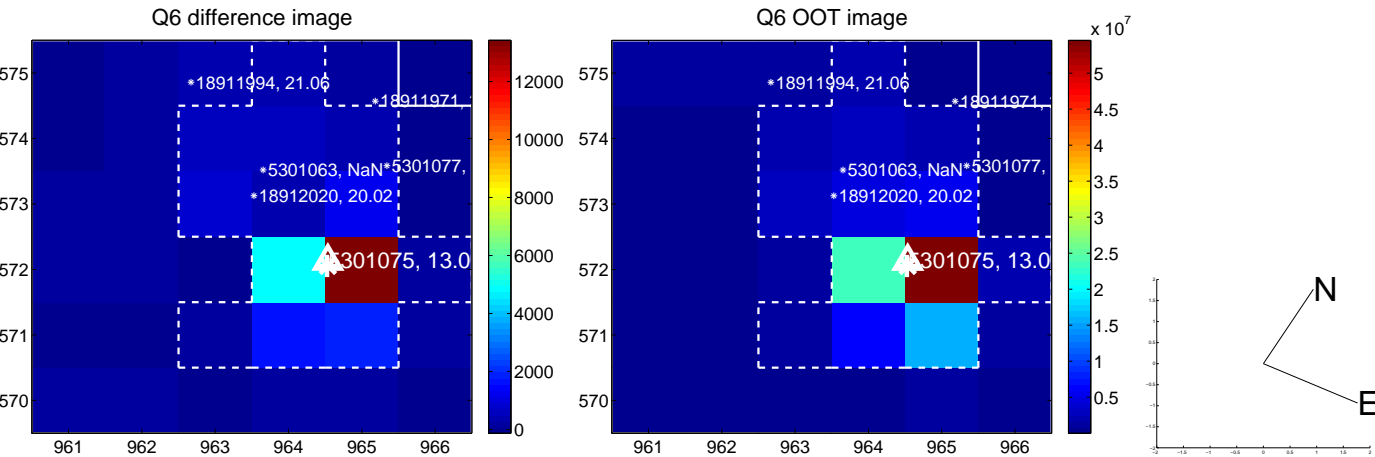
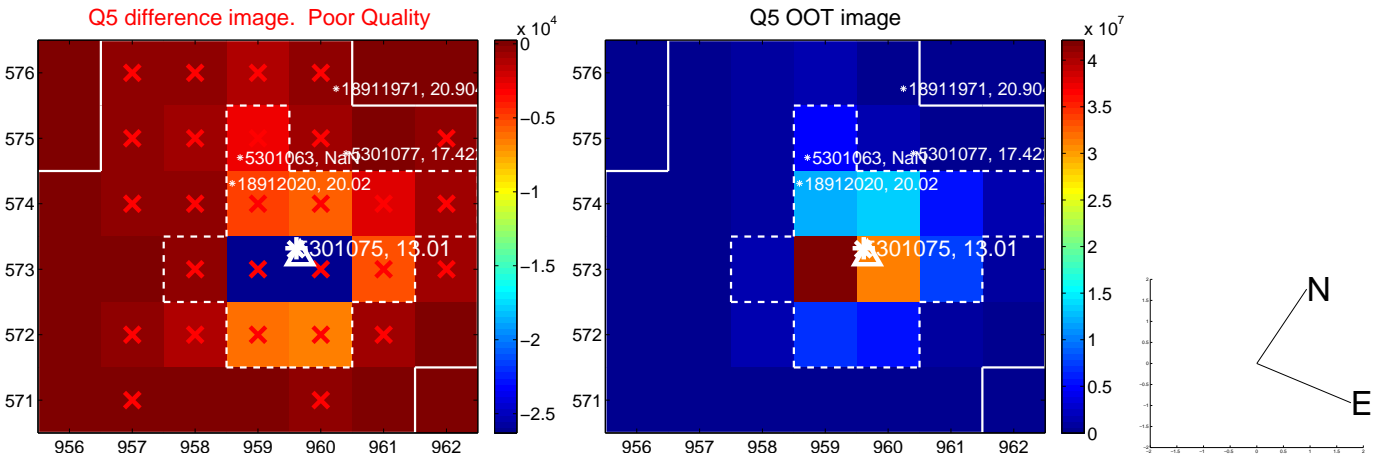


Centroid source offsets from the target star reconstructed from PRF and photometric centroids. **Sky blue crosses: good quarterly centroid offsets; Vermillion crosses: bad quarterly centroid offsets**; magenta cross: average over quarters. Length of the crosses: one- σ uncertainty. Blue circle: three- σ . Red *: target star. Blue *: Other stars. Text next to a star gives its KIC ID and kepmag. KIC IDs > 15,000,000 are from the UKIRT catalog.

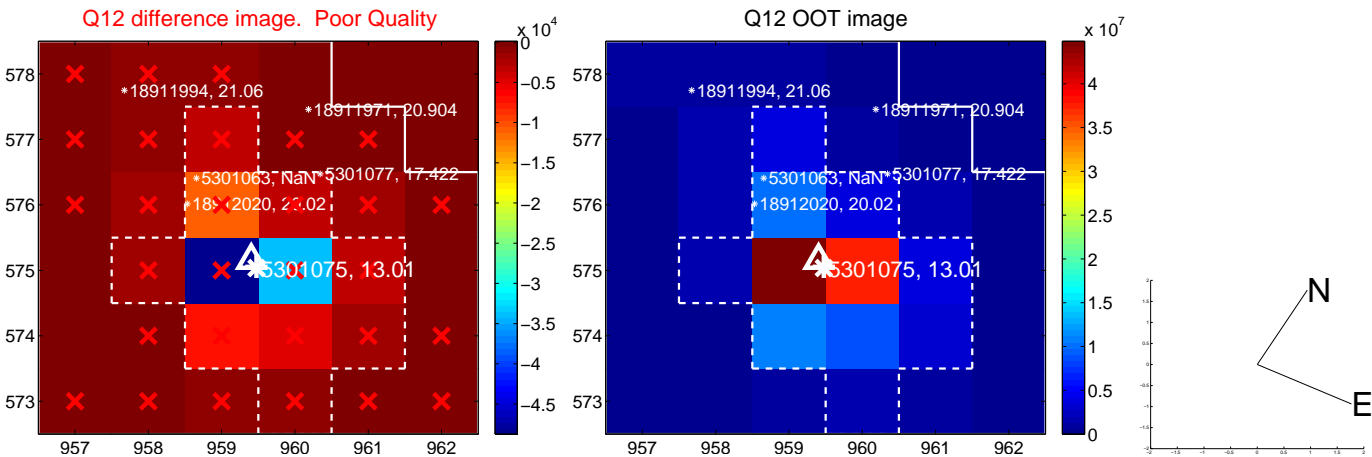
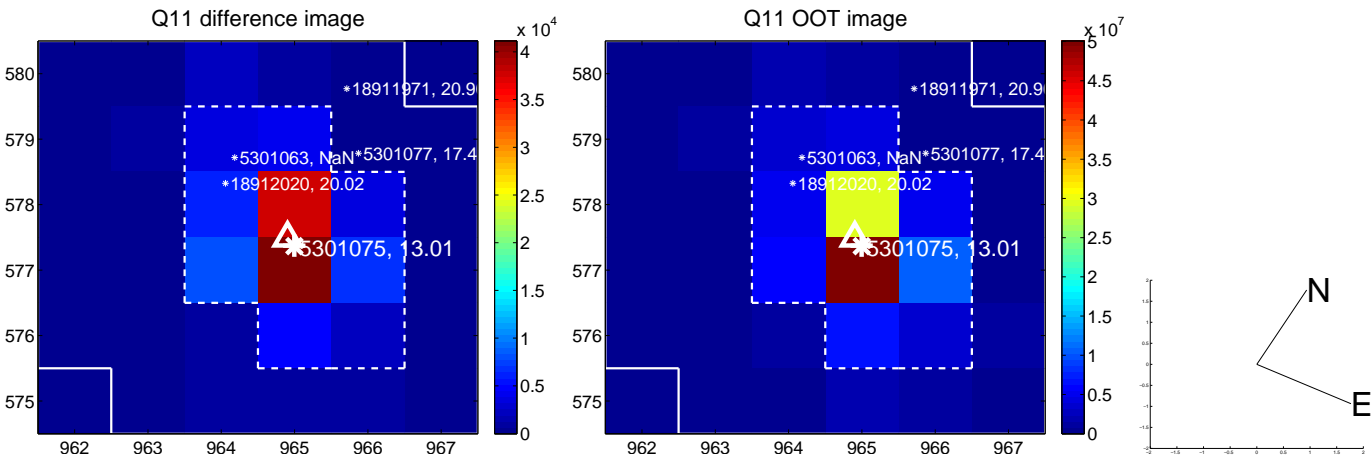
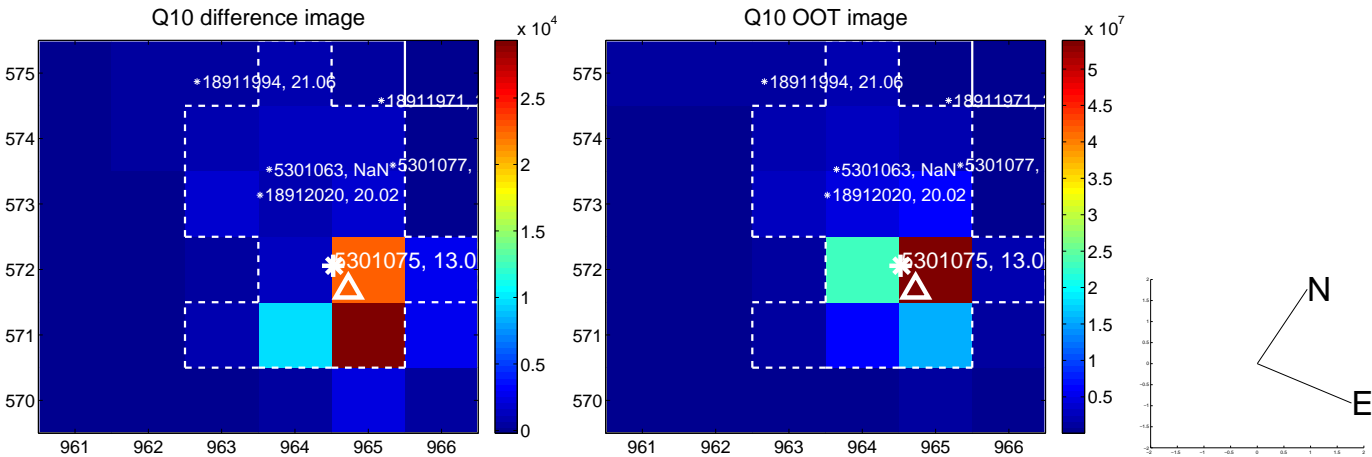
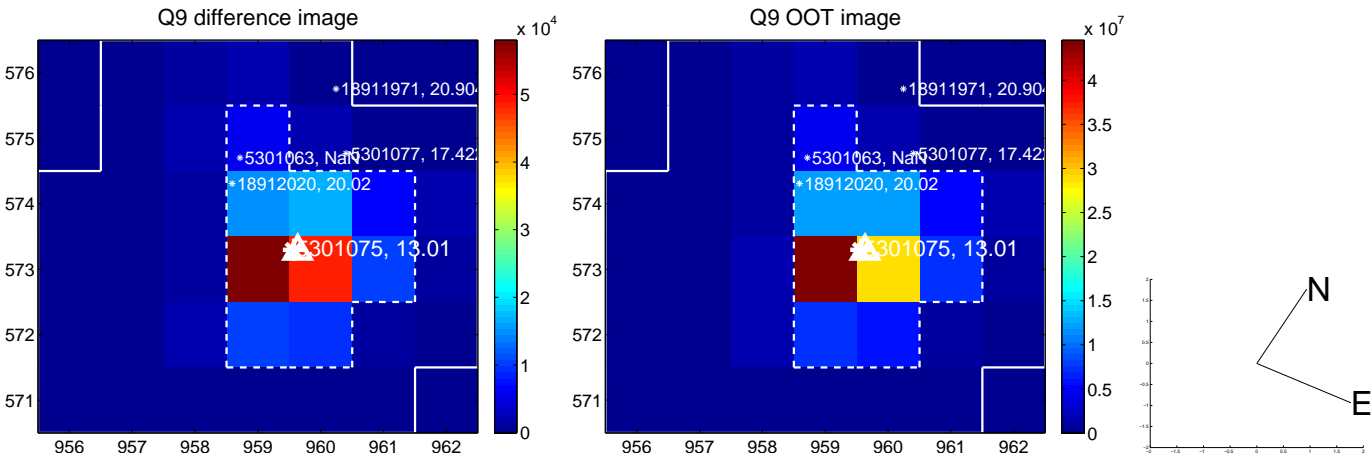
white \times : KIC target position; +: OOT centroid; \triangle : difference centroid. red \times : large negative pixel value.



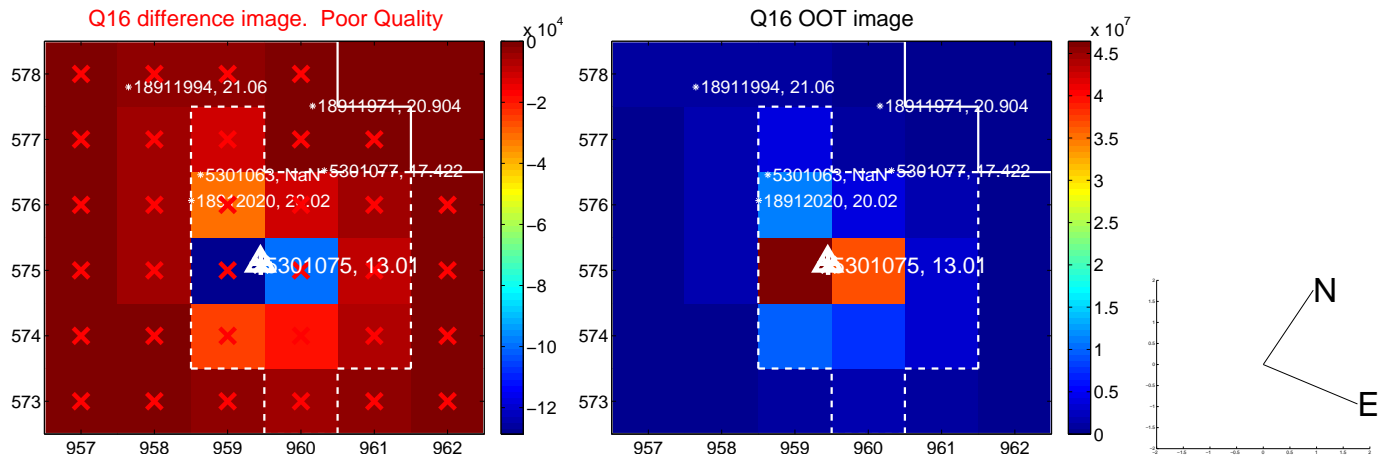
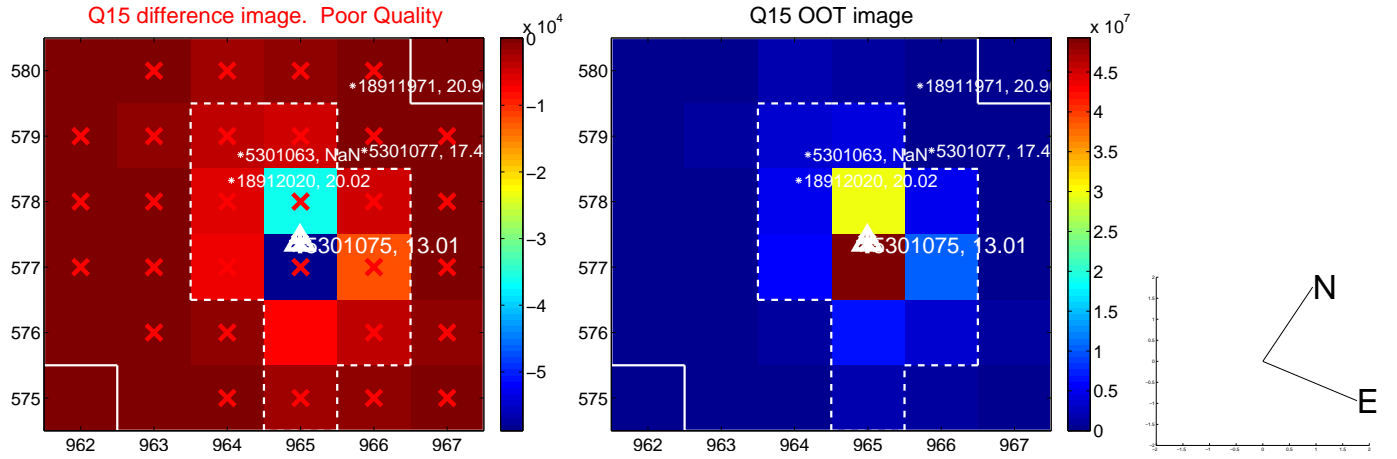
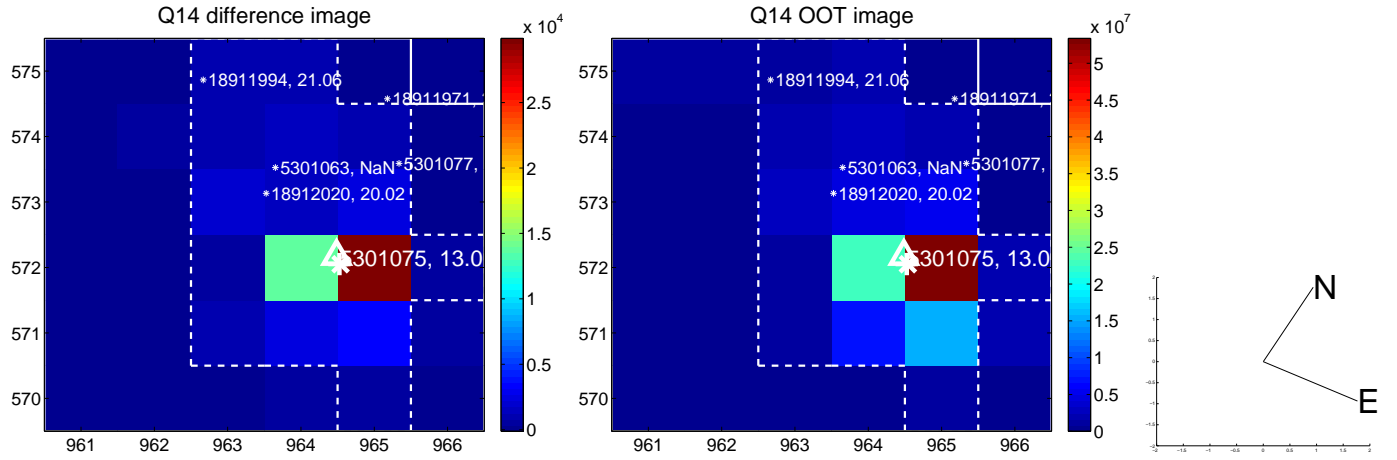
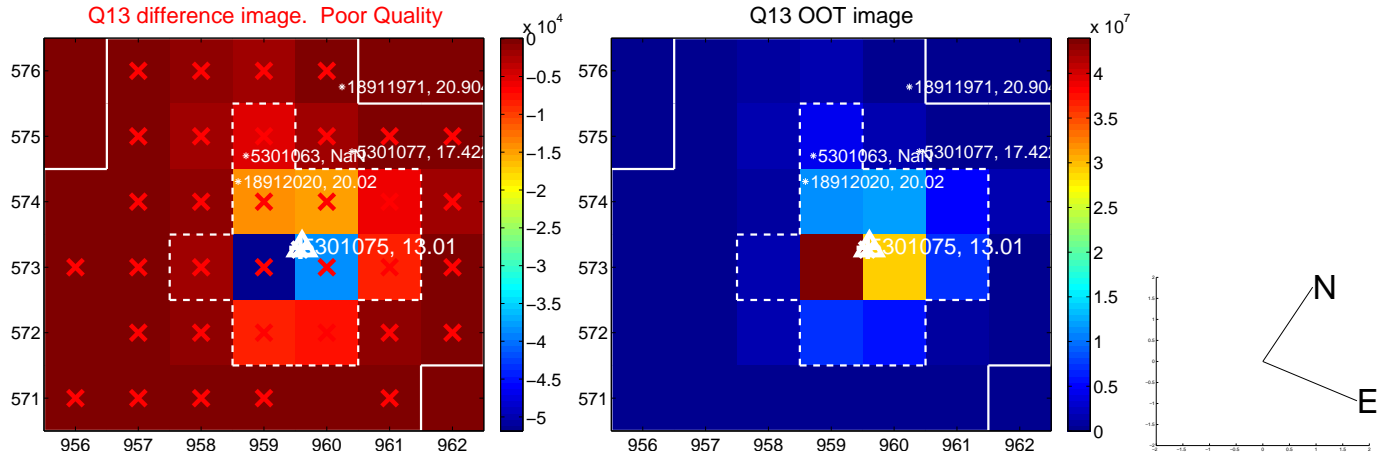
white \times : KIC target position; +: OOT centroid; \triangle : difference centroid. red \times : large negative pixel value.



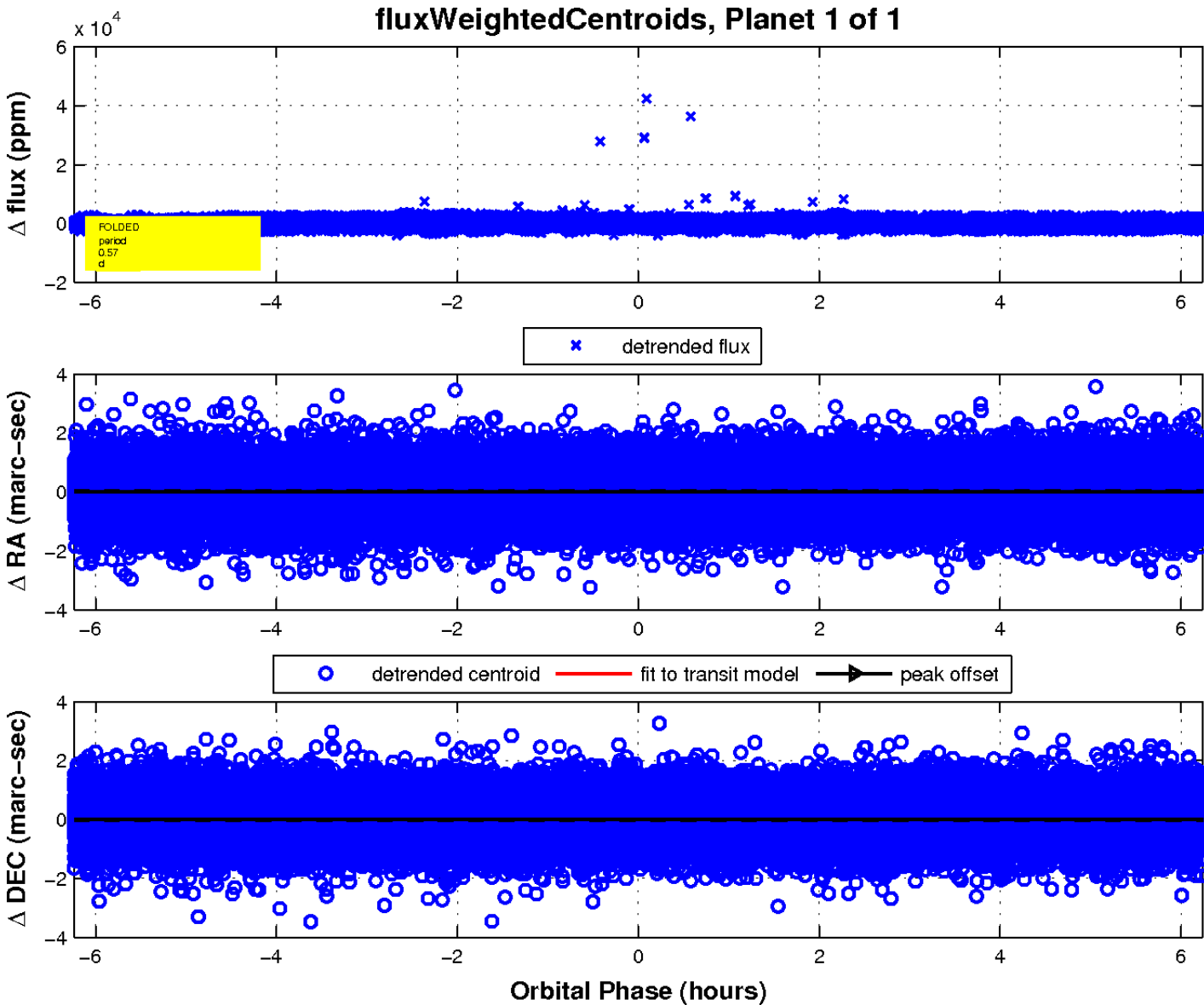
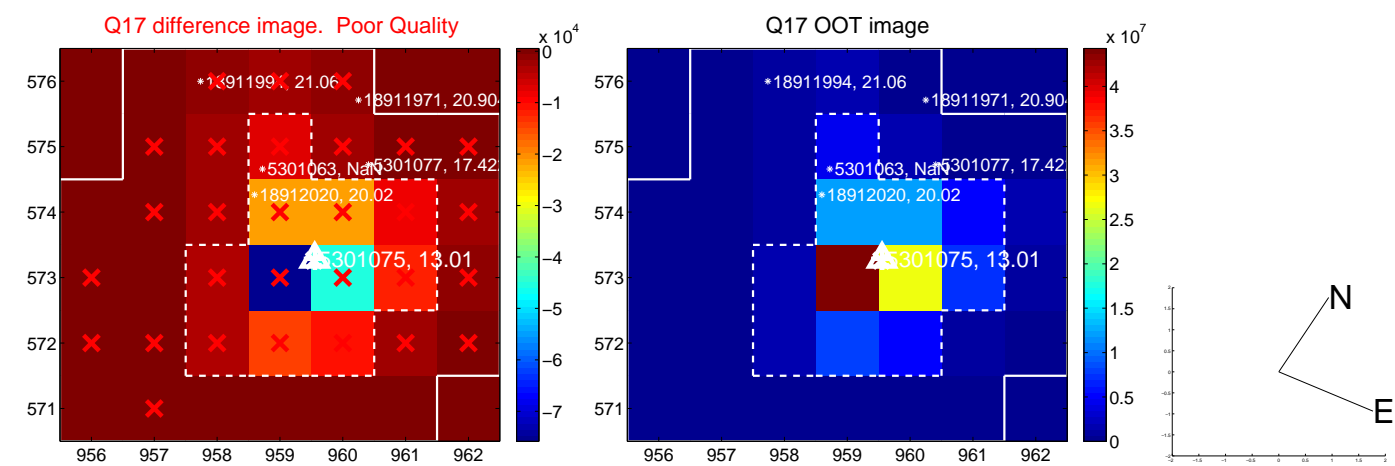
white \times : KIC target position; +: OOT centroid; \triangle : difference centroid. red \times : large negative pixel value.



white \times : KIC target position; +: OOT centroid; \triangle : difference centroid. red \times : large negative pixel value.



white \times : KIC target position; $+$: OOT centroid; \triangle : difference centroid. red \times : large negative pixel value.



UKIRT Image

Declination

