

KIC 005295206

Q1-17 DR25 TCE Parameters

TCE	Run Type	KOI?	Period (Days)	Epoch (BKJD)	Depth (ppm)	Duration (Hours)	MES	SNR	R_{\star} (R_{\odot})	T_{\star} (K)	R_p (R_{\oplus})	S_p (S_{\oplus})
005295206-01	OBS	6557.01	6.634636	137.056734	70.2	3.814	8.0	9.4	1.23	6463	1.17	453.91

Robovetter Results

TCE	Run Type	Disp	Score	N	S	C	E	Comments
005295206-01	OBS	PC	0.99	0	0	0	0	NO_COMMENT

Notes: OBS = Observed. INJ = Injected. INV = Inverted. SCR = Scrambled.

N = Not Transit-Like. S = Stellar Eclipse. C = Centroid Offset. E = Ephemeris Match.

See http://exoplanetarchive.ipac.caltech.edu/docs/API_kepcandidate_columns.html#proj_disp_col for comment definitions.

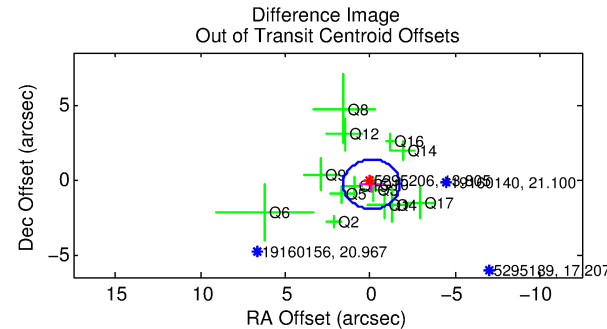
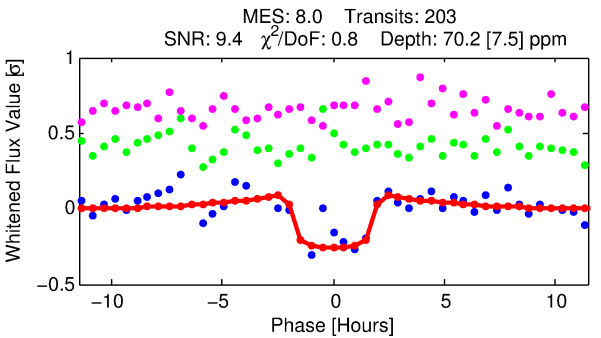
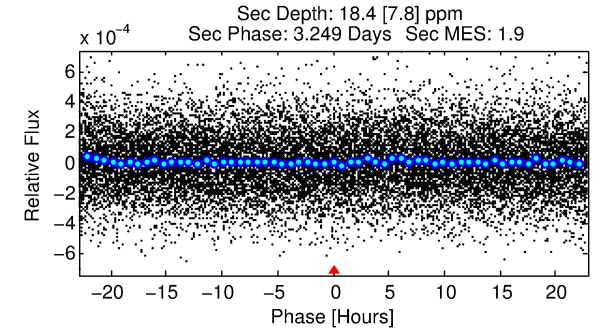
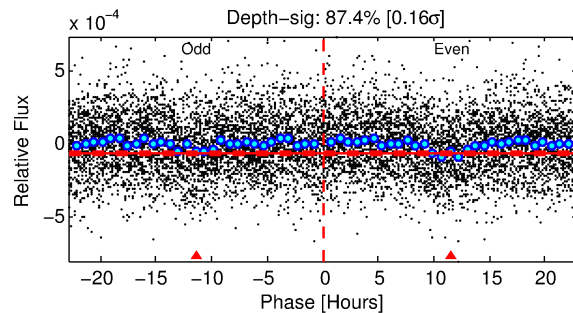
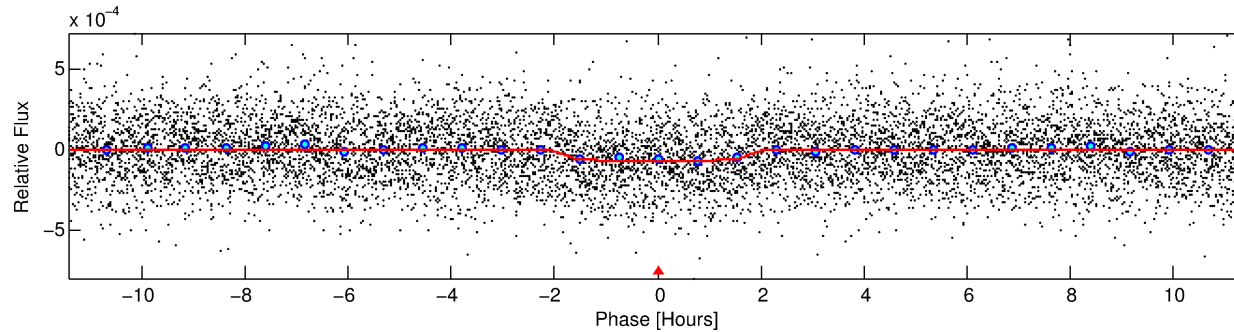
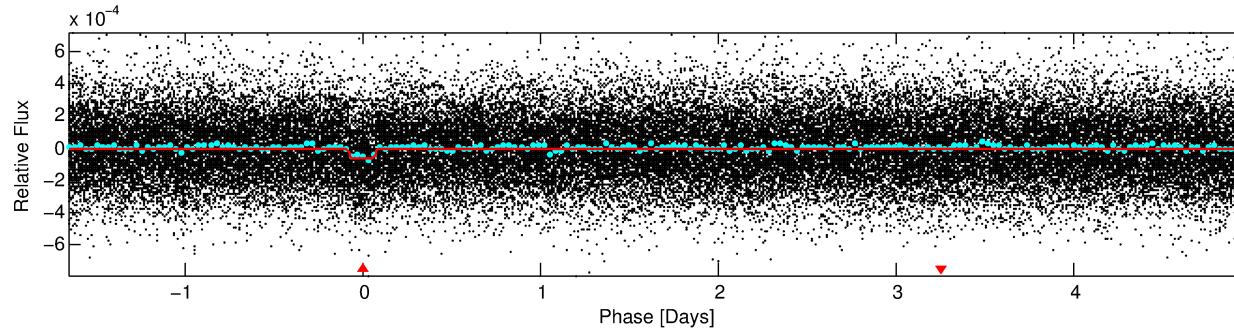
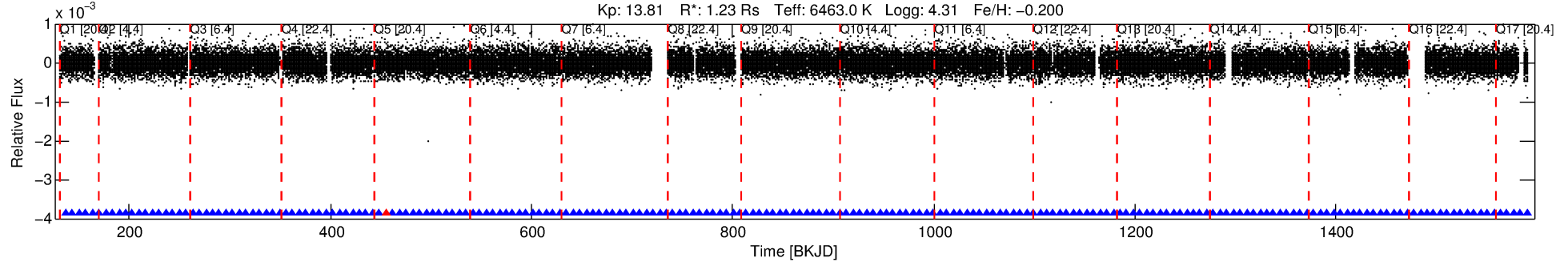
Ephemeris Match Information For 005295206-01

No Significant Match Found

DV One-Page Summary

KIC: 5295206 Candidate: 1 of 1 Period: 6.635 d
KOI: K06557.01 Corr: 0.951

Kp: 13.81 R*: 1.23 Rs Teff: 6463.0 K Logg: 4.31 Fe/H: -0.200



DV Fit Results:

Period = 6.63464 [0.00005] d
Epoch = 137.0567 [0.0055] BKJD
Rp/R* = 0.0088 [0.0034]
a/R* = 6.94 [14.98]
b = 0.87 [0.65]
Seff = 453.91 [176.27]
Teff = 1177 [114] K
Rp = 1.17 [0.59] Re
a = 0.0719 [0.0185] AU
Ag = 38.16 [36.86] [1.01σ]
Teff = 4523 [1022] K [3.25σ]

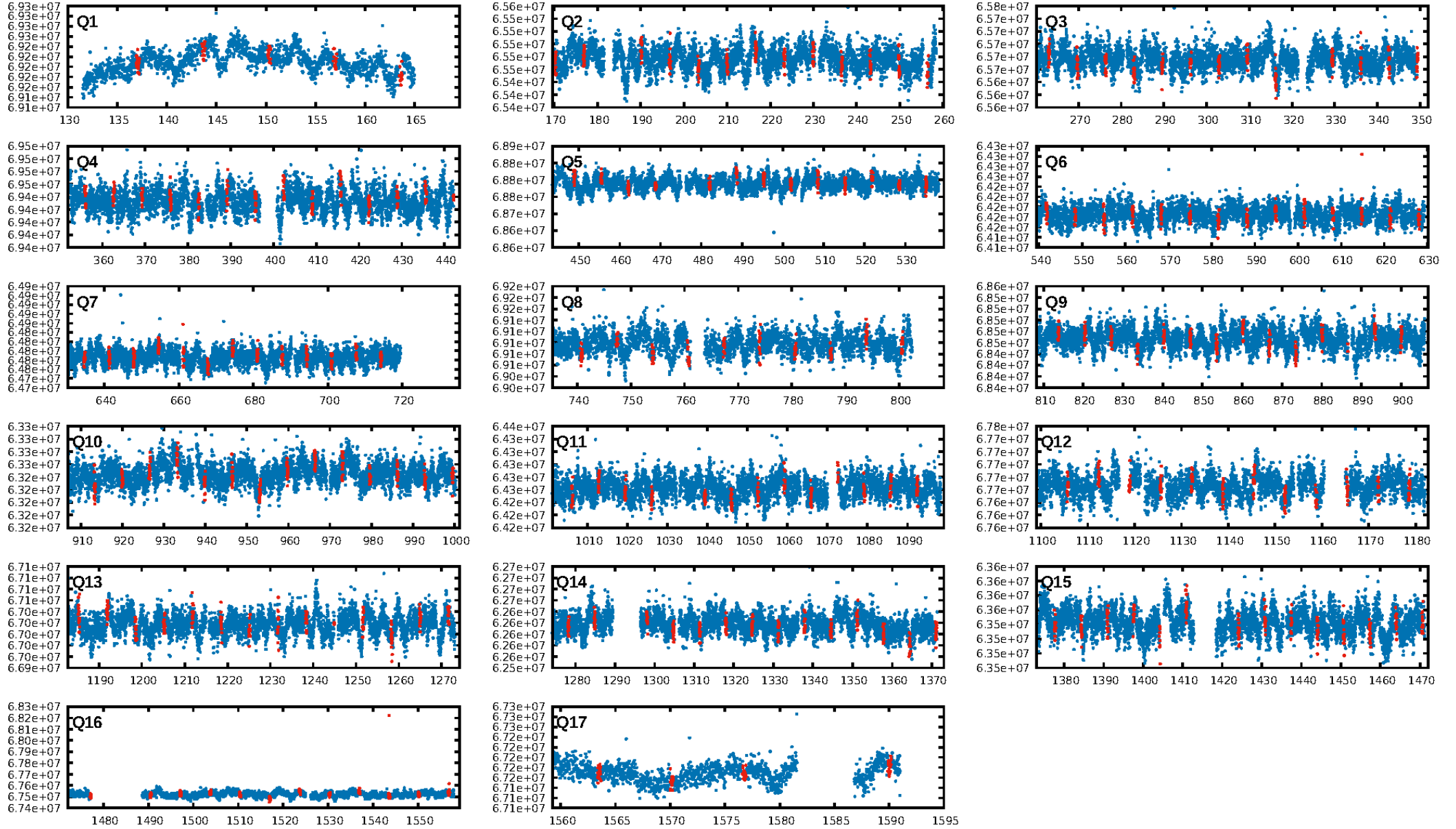
DV Diagnostic Results:

ShortPeriod-sig: N/A
LongPeriod-sig: N/A
ModelChiSquare2-sig: N/A
ModelChiSquareGof-sig: N/A
Bootstrap-pfa: 9.72e-16
RollingBand-fgt: 0.99 [193/194]
GhostDiagnostic-chr: 4.45
Centroid-sig: 1.4%
Centroid-so: 1.290 arcsec [1.21σ]
OotOffset-rm: 0.326 arcsec [0.59σ]
KicOffset-rm: 0.381 arcsec [0.70σ]
OotOffset-st: 4/2/4/4 [14]
KicOffset-st: 4/2/4/4 [14]
DiffImageQuality-fgm: 0.57 [8/14]
DiffImageOverlap-fno: 1.00 [17/17]

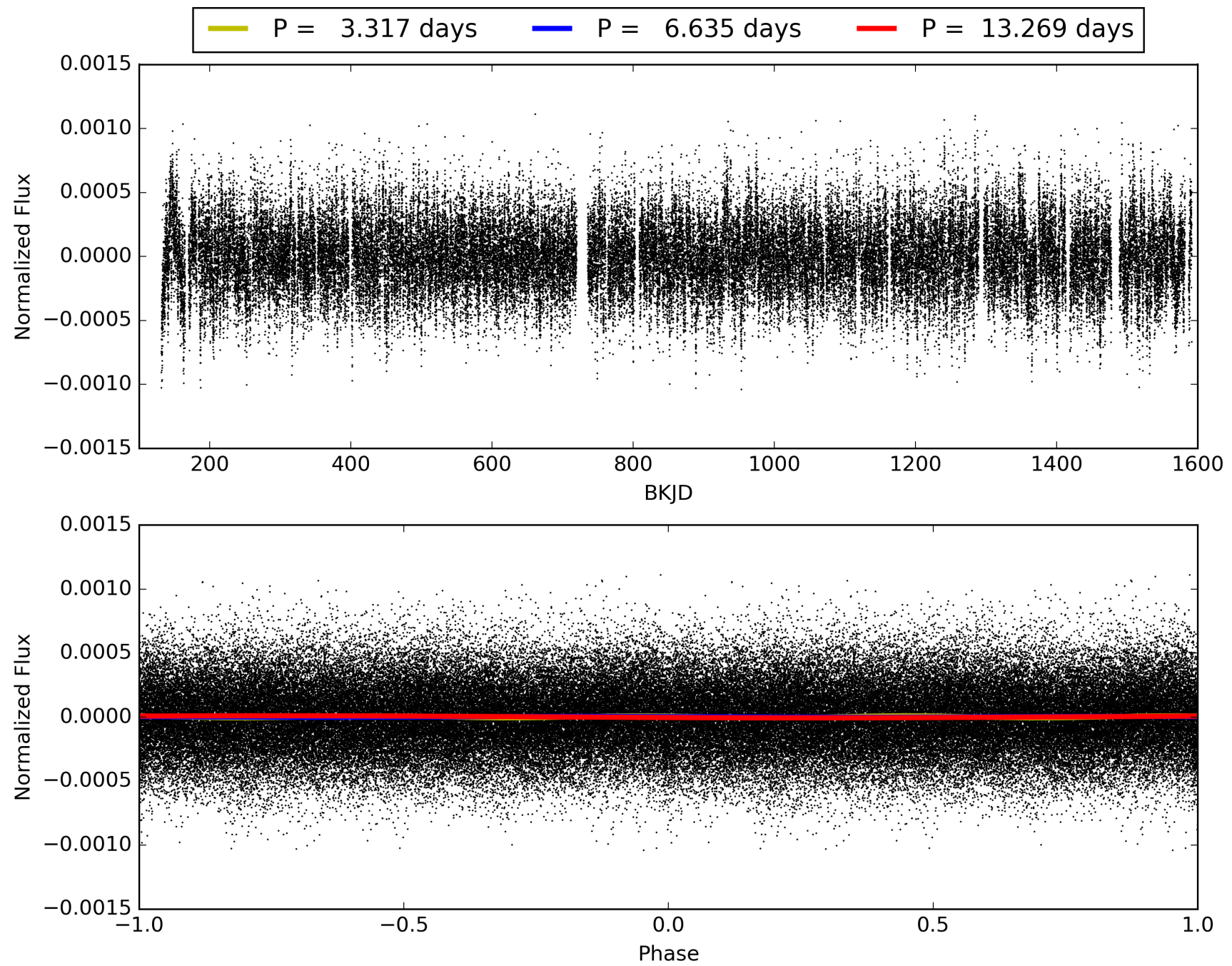
Software Revision: svn+ssh://murzim/repo/soc/tags/release/9.3.42@60958 -- Date Generated: 29-Jan-2016 07:10:11 Z

This Data Validation Report Summary was produced in the Kepler Science Operations Center Pipeline at NASA Ames Research Center

TCE 005295206-01, PDC Light Curves

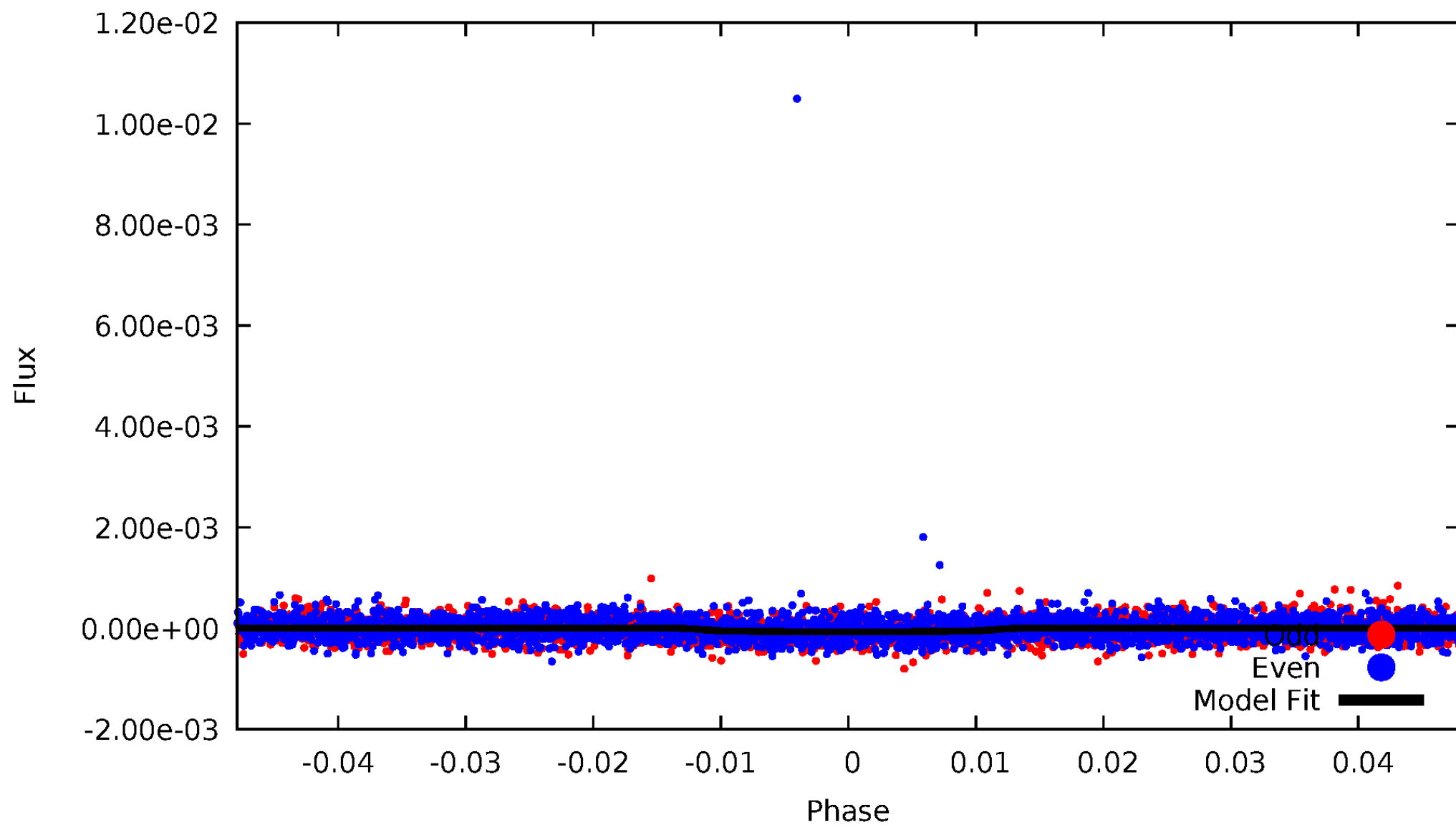


TCE 005295206-01



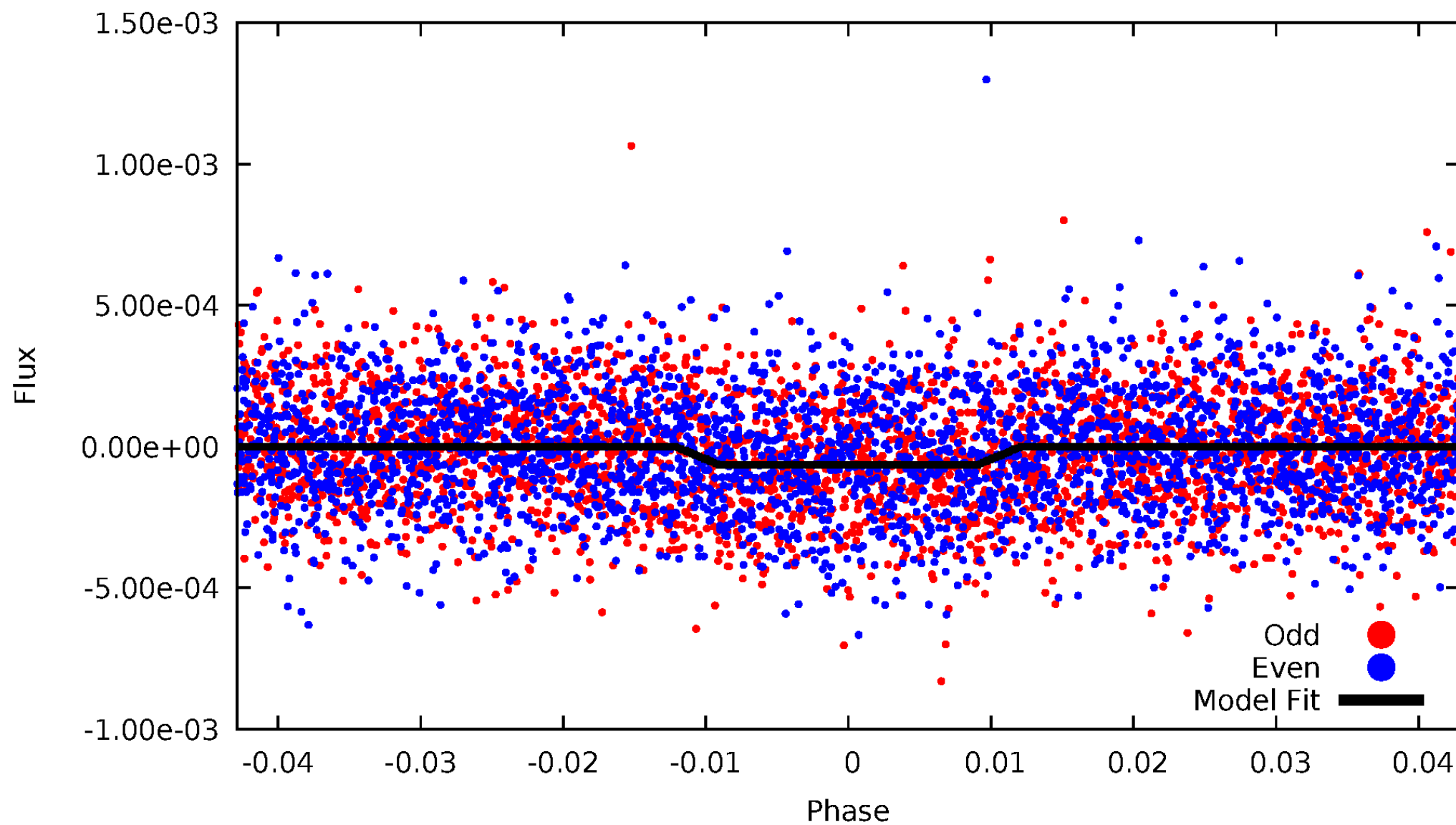
DV Odd/Even

TCE 005295206-01



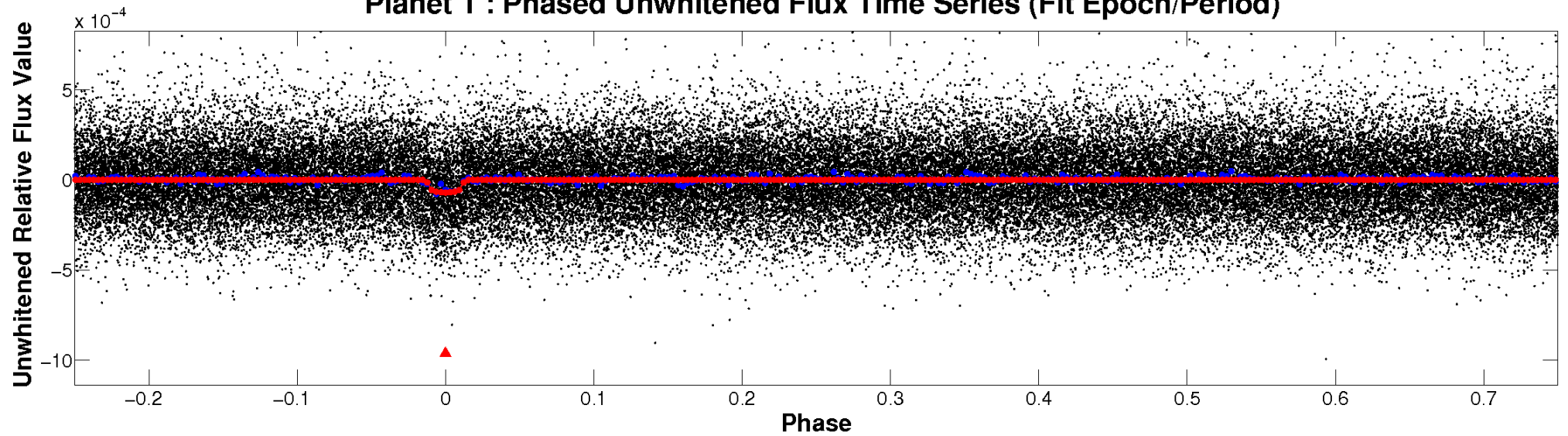
ALT Odd/Even

TCE 005295206-01

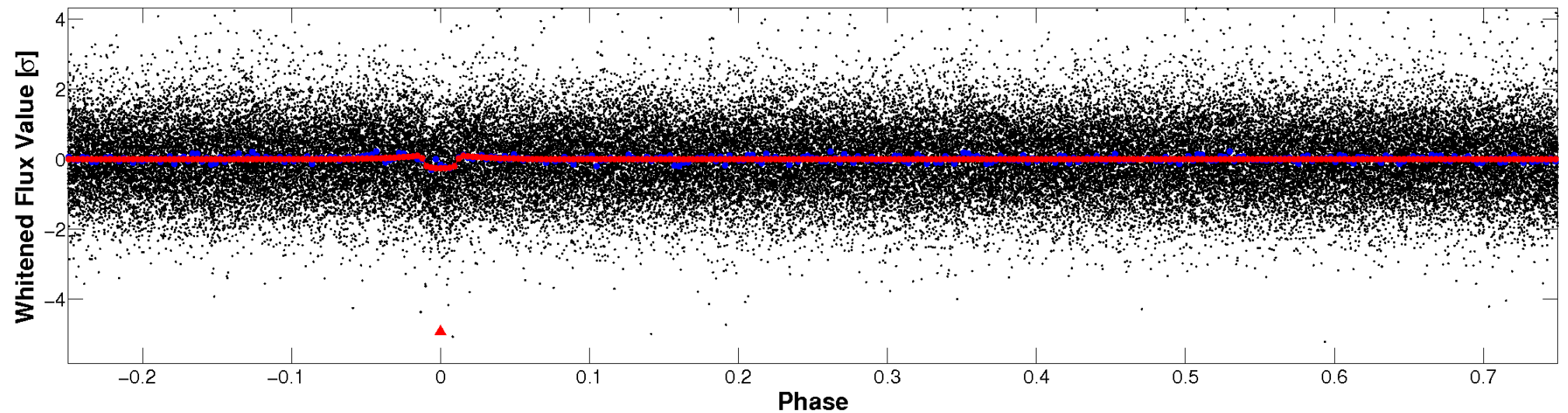


Non-Whitened Vs. Whitened Light Curve

Planet 1 : Phased Unwhitened Flux Time Series (Fit Epoch/Period)

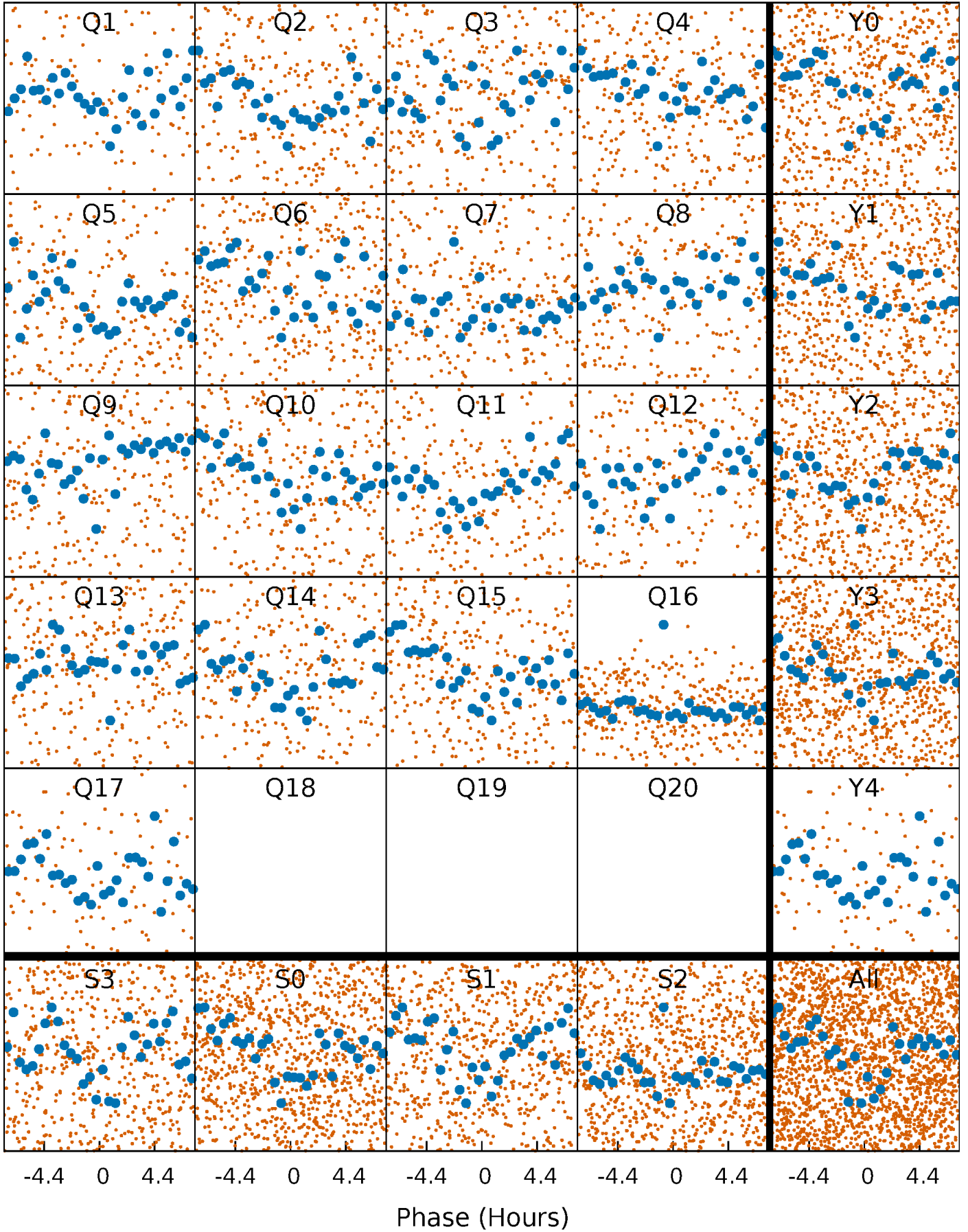


Planet 1 : Phased Whitened Flux Time Series (Fit Epoch/Period)



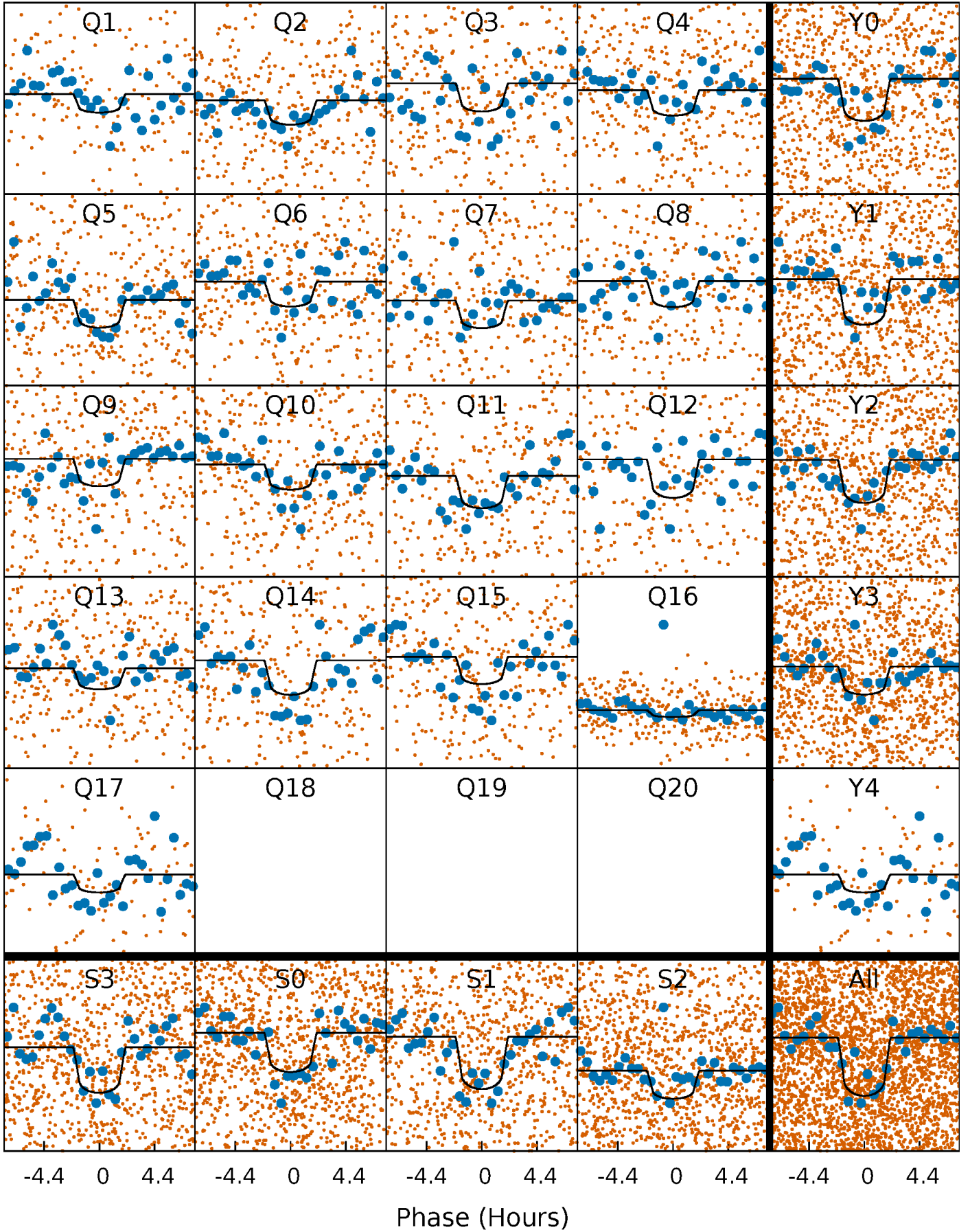
PDC Quarter-Phased Transit Curves

TCE 005295206-01 P= 6.634636 Days $T_0=137.056735$ (BKJD)



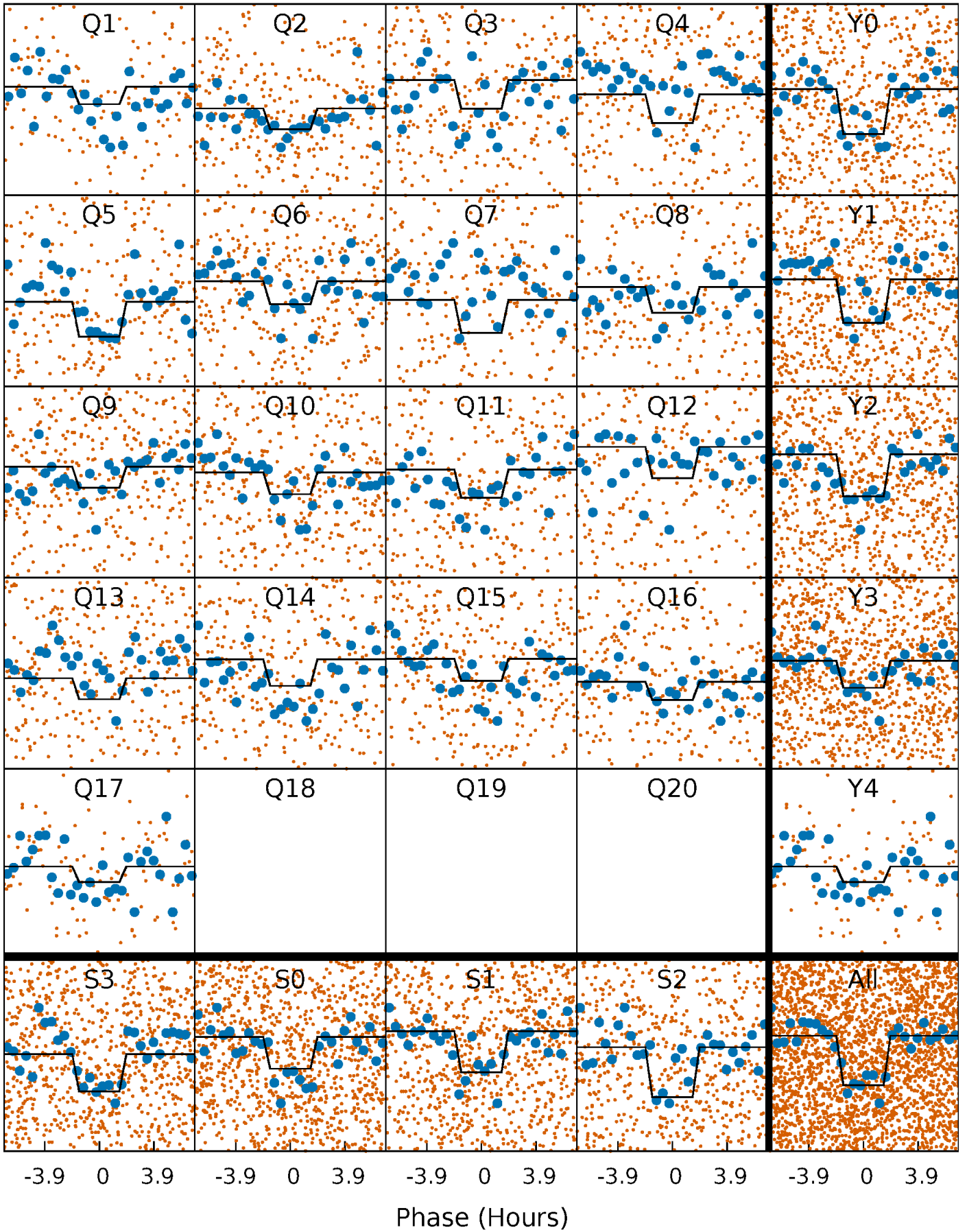
DV Quarter-Phased Transit Curves

TCE 005295206-01 P= 6.634636 Days $T_0=137.056735$ (BKJD)



Alt. Detrend Quarter-Phased Transit Curves

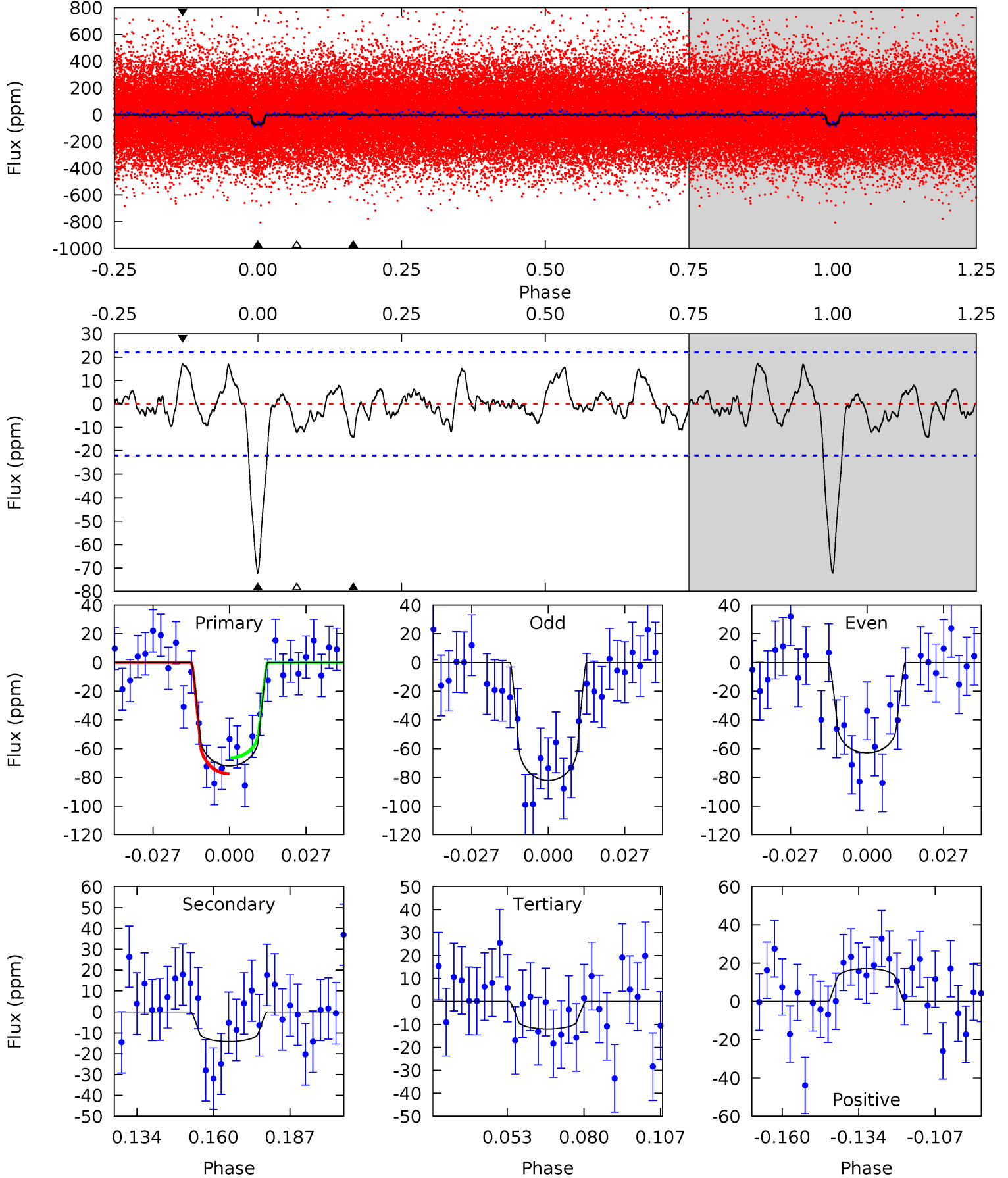
TCE 005295206-01 P= 6.634524 Days $T_0=137.064074$ (BKJD)



DV Model-Shift Uniqueness Test

005295206-01, P = 6.634636 Days, E = 130.422099 Days

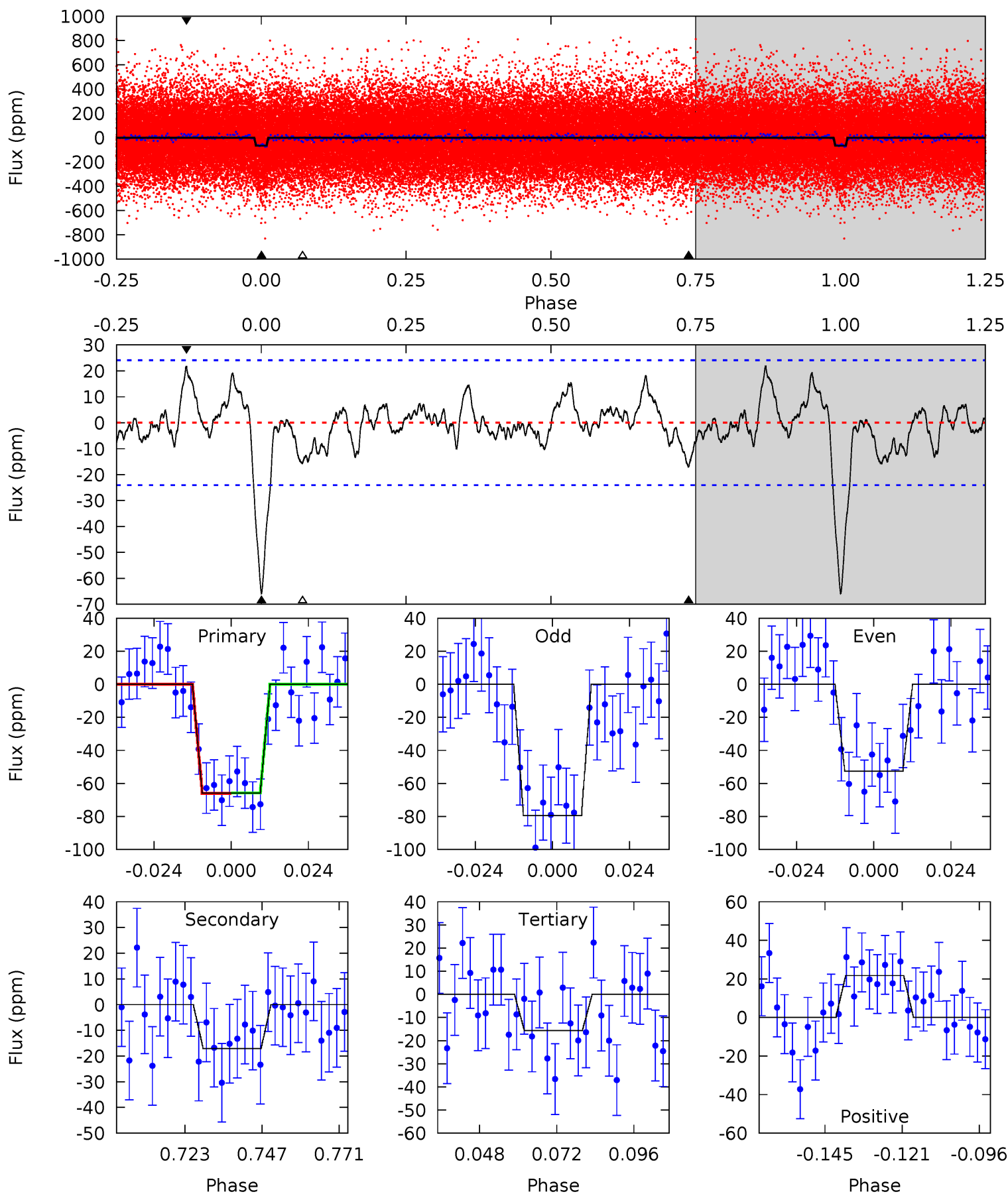
Pri	Sec	Ter	Pos	FA ₁	FA ₂	F _{Red}	Pri-Ter	Pri-Pos	Sec-Ter	Sec-Pos	Odd-Evn	DMM	Shape	TAT
15.8	3.11	2.62	3.76	4.83	2.22	1.35	13.2	12.0	0.49	-0.64	2.11	0.81	0.19	1.20



Alt Model-Shift Uniqueness Test

005295206-01, P = 6.634524 Days, E = 130.429550 Days

Pri	Sec	Ter	Pos	FA ₁	FA ₂	F _{Red}	Pri-Ter	Pri-Pos	Sec-Ter	Sec-Pos	Odd-Evn	DMM	Shape	TAT
13.3	3.44	3.17	4.39	4.85	2.26	1.37	10.1	8.91	0.27	-0.95	2.70	0.84	0.25	0.03



Stellar Parameters For KIC 005295206

	$T_{\text{eff}}(K)$	$\log(g)$	[Fe/H]	$R (R_{\odot})$	$M(M_{\odot})$	$p_{\star} (\text{g}\cdot\text{cm}^{-3})$
	6463^{+155}_{-214}	$4.313^{+0.105}_{-0.195}$	$-0.200^{+0.250}_{-0.300}$	$1.225^{+0.384}_{-0.192}$	$1.126^{+0.177}_{-0.129}$	$0.862^{+0.418}_{-0.449}$
	+2%/-3%	+2%/-5%	+125%/-150%	+31%/-16%	+16%/-11%	+49%/-52%
Source	PHO1	KIC0	KIC0	DSEP		

KIC = Kepler Input Catalog; PHO = Photometry; SPE = Spectroscopy; AST = Asteroseismology
 TRA = Transits; DESP = Dartmouth Models; MULT = Multiple Models

Secondary Eclipse Parameters for KIC 005295206-01 / KOI 6557.01

Detrend	Depth (ppm)	$R_p (R_{\oplus})$	$T_{max} (K)$	$T_{obs} (K)$	A_{obs}
DV	-14 ± 5	$1.22^{+0.47}_{-0.48}$	1664^{+126}_{-92}	4432^{+985}_{-582}	28^{+46}_{-15}
Alt.	-17 ± 5	$1.09^{+0.49}_{-0.48}$	1656^{+122}_{-82}	4736^{+1418}_{-671}	40^{+84}_{-22}

T_{max} = Theoretical Maximum Planetary Temperature

T_{obs} = Observed Planetary Temperature (Assuming $A=0.3$)

A_{obs} = Observed Albedo (Assuming $T=0$)

If a secondary eclipse is present, the system is likely an EB if $T_{obs} \gg T_{max}$ AND $A_{obs} \gg 1.0$

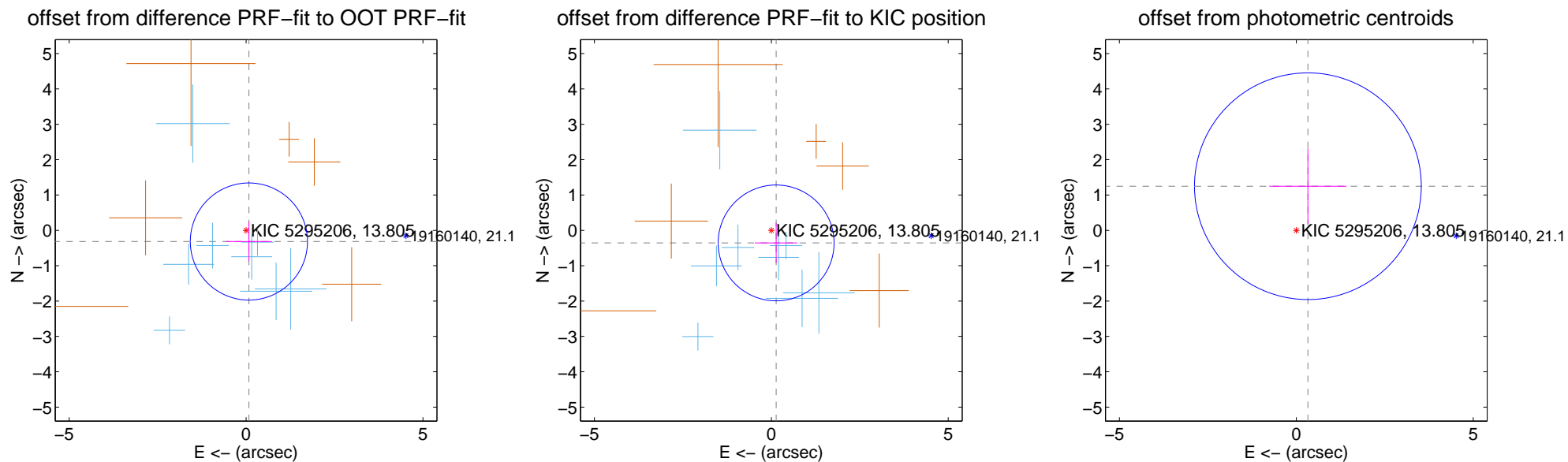
DV Centroid Data

Supplemental centroid analysis for 005295206-01. Kepler magnitude: 13.80. Transit SNR 9.37

There are 8 quarters with good PRF difference image offsets

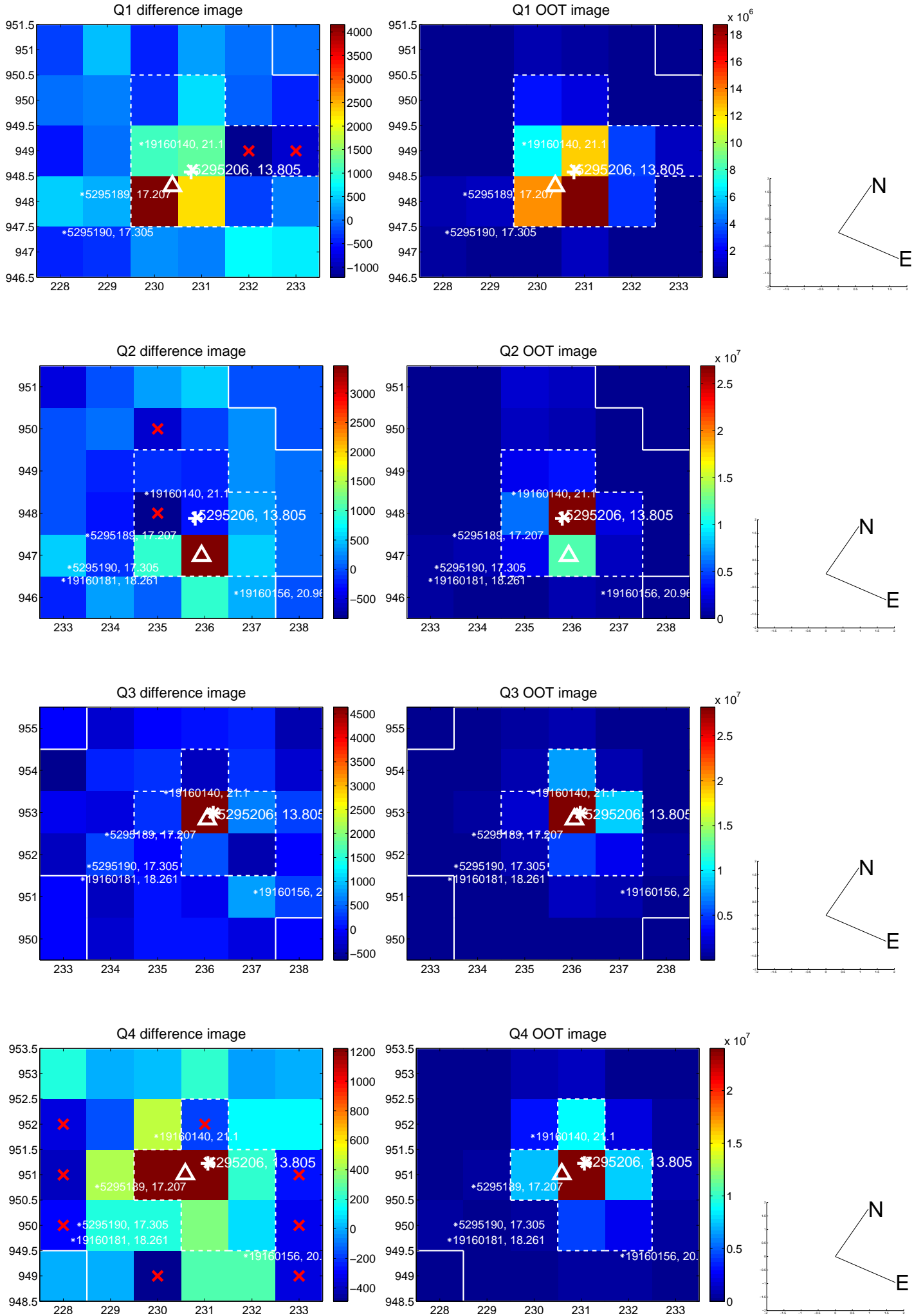
The direct PRF centroid is offset from the target star catalog position by about 0.19 arcsec

	Distance in arcsec	Distance / σ	Δ RA	Δ Dec
PRF-fit source offset from OOT	0.326 ± 0.552	0.59	-0.080 ± 0.649	-0.316 ± 0.559
PRF-fit source offset from KIC position	0.381 ± 0.546	0.70	-0.136 ± 0.602	-0.356 ± 0.563
photometric centroid source offset	1.29 ± 1.07	1.21	-0.33 ± 1.09	1.25 ± 1.07

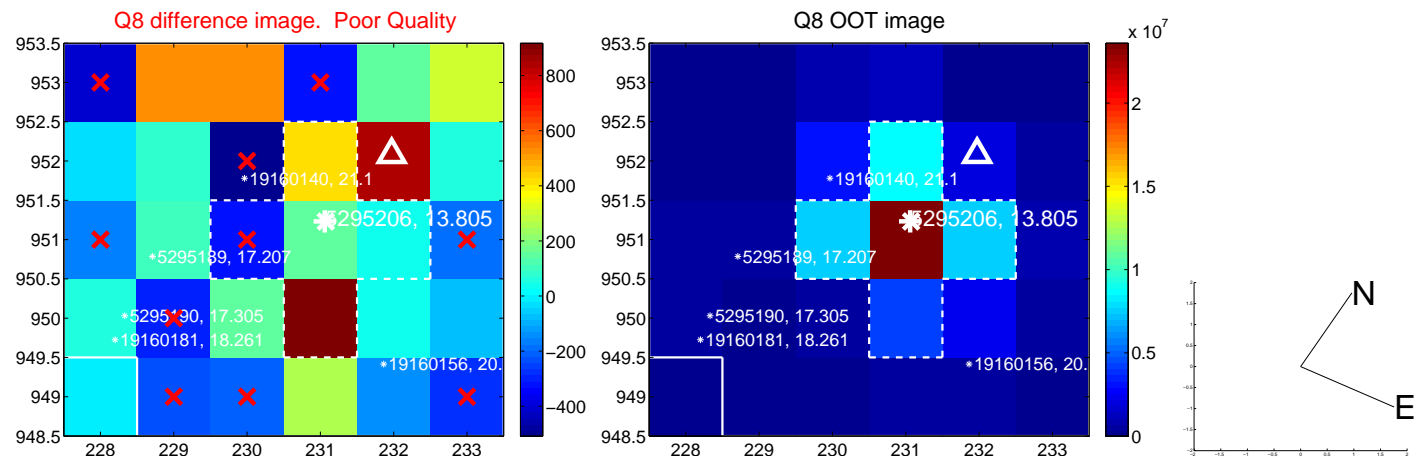
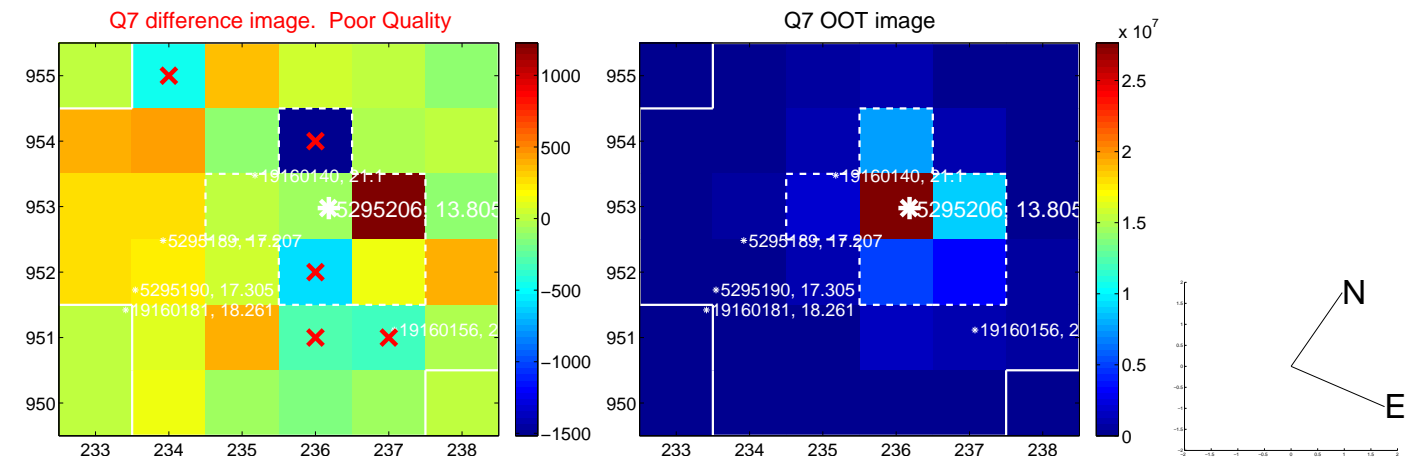
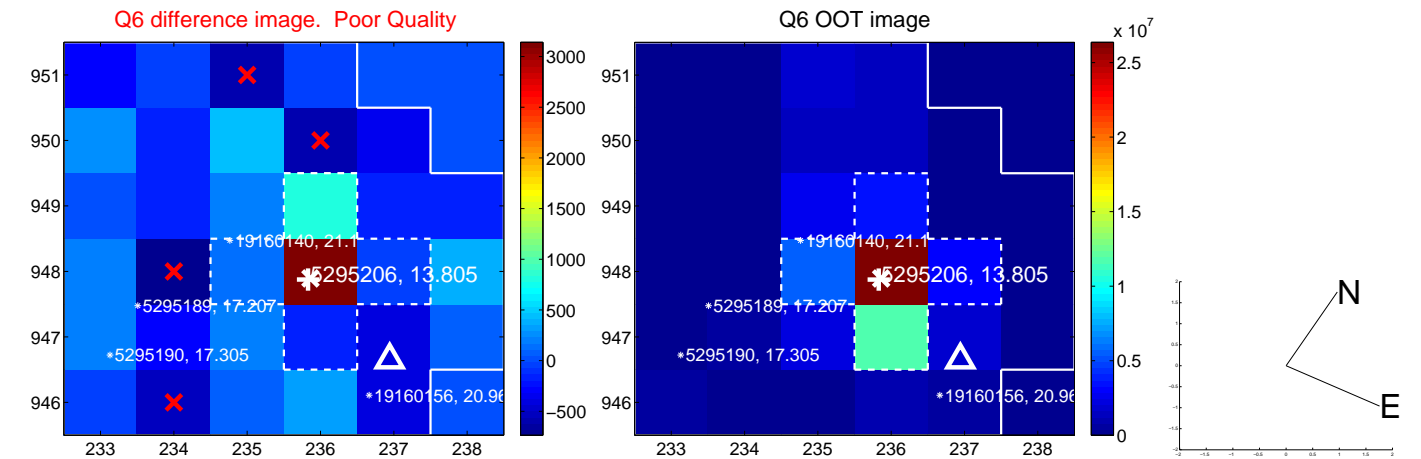
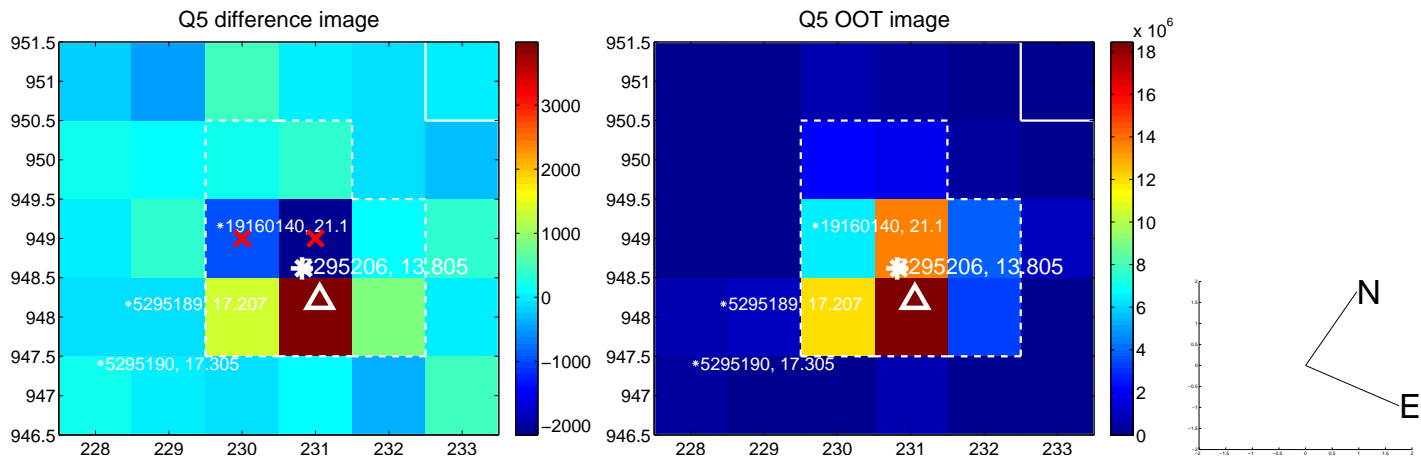


Centroid source offsets from the target star reconstructed from PRF and photometric centroids. **Sky blue crosses: good quarterly centroid offsets; Vermillion crosses: bad quarterly centroid offsets**; magenta cross: average over quarters. Length of the crosses: one- σ uncertainty. Blue circle: three- σ . Red *: target star. Blue *: Other stars. Text next to a star gives its KIC ID and kepmag. KIC IDs > 15,000,000 are from the UKIRT catalog.

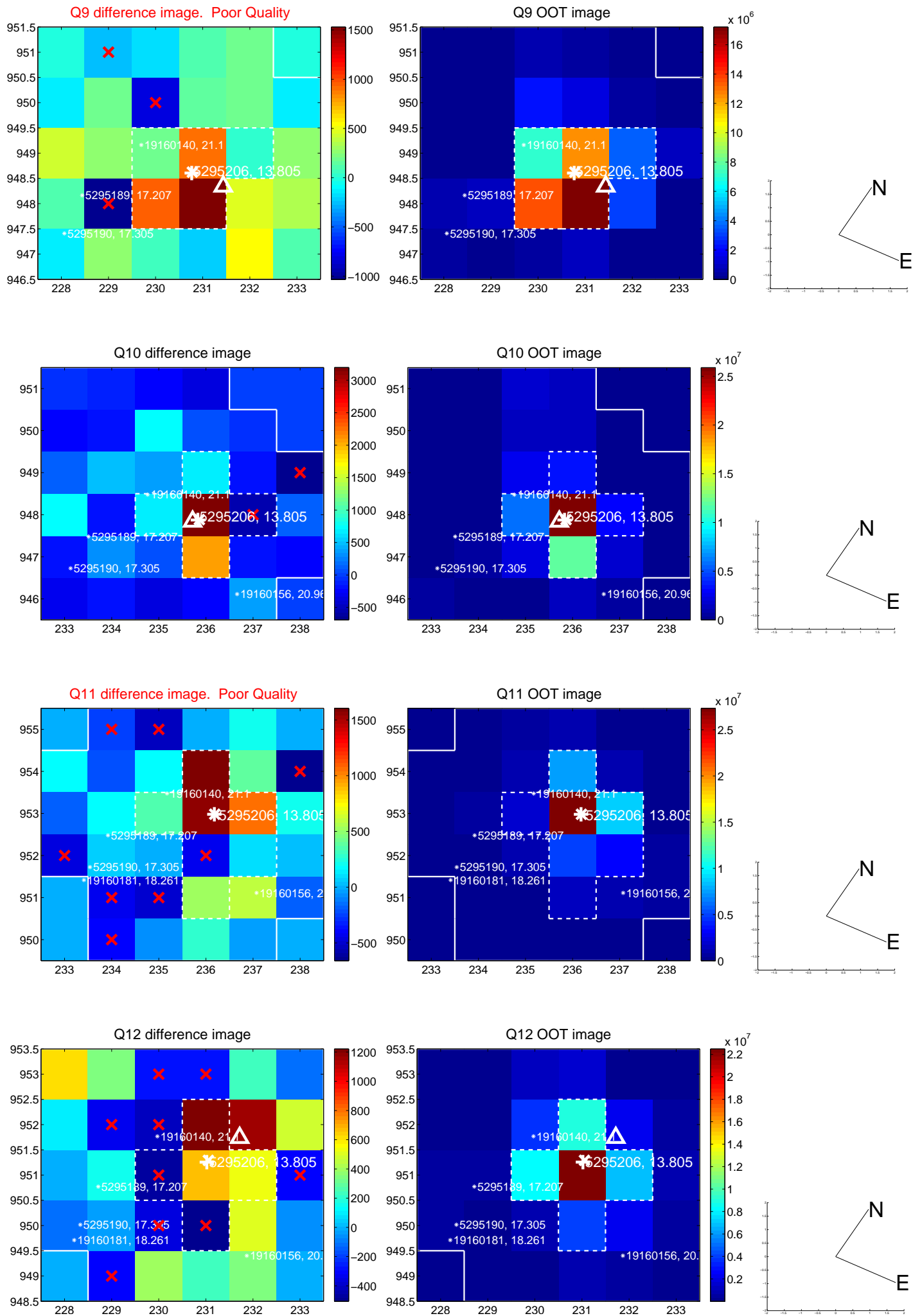
white \times : KIC target position; +: OOT centroid; \triangle : difference centroid. red \times : large negative pixel value.



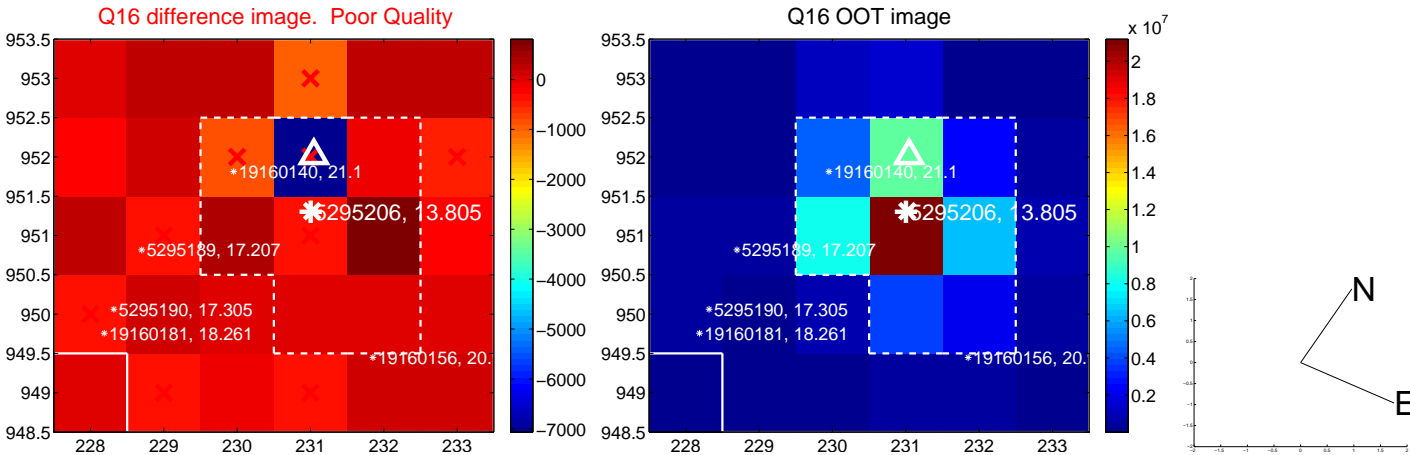
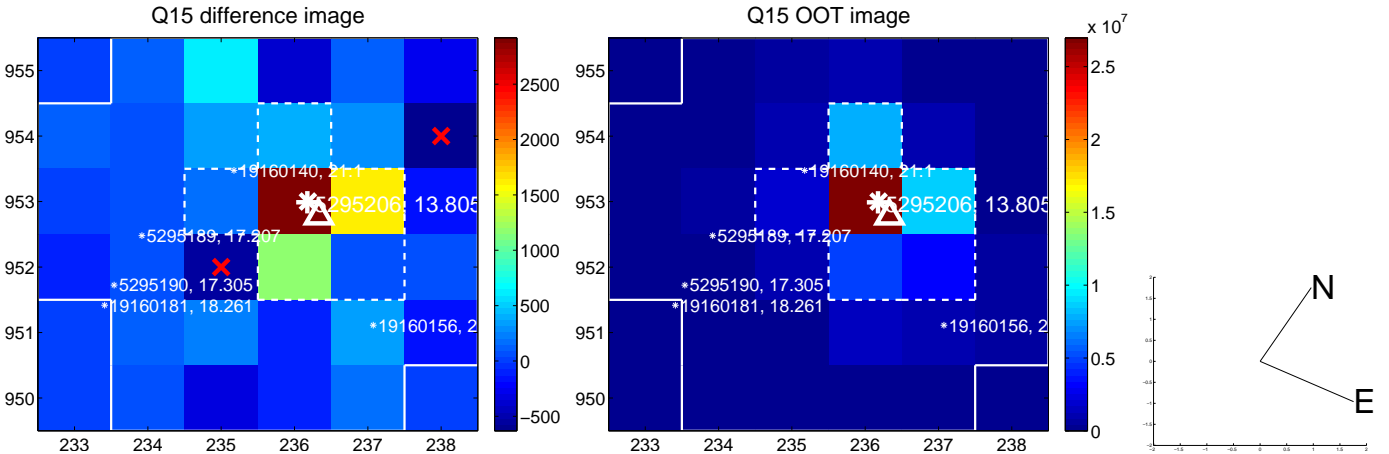
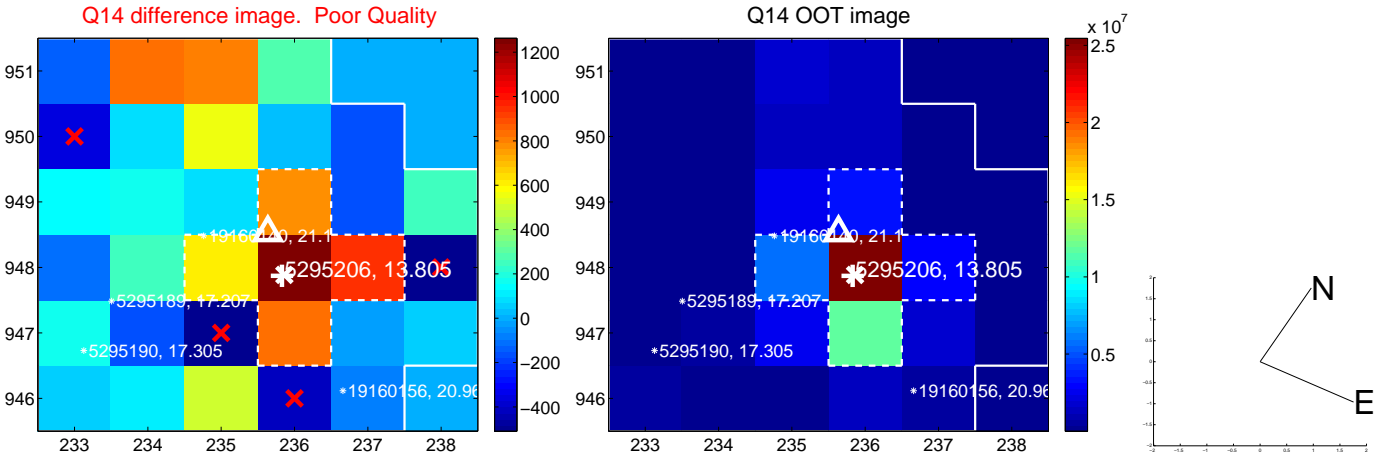
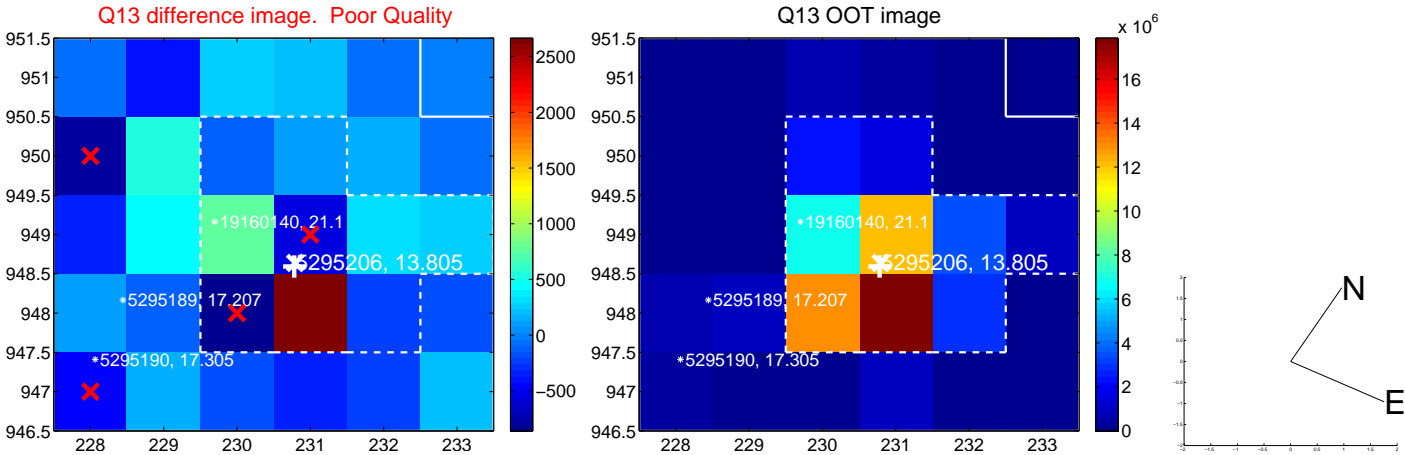
white \times : KIC target position; +: OOT centroid; \triangle : difference centroid. red \times : large negative pixel value.



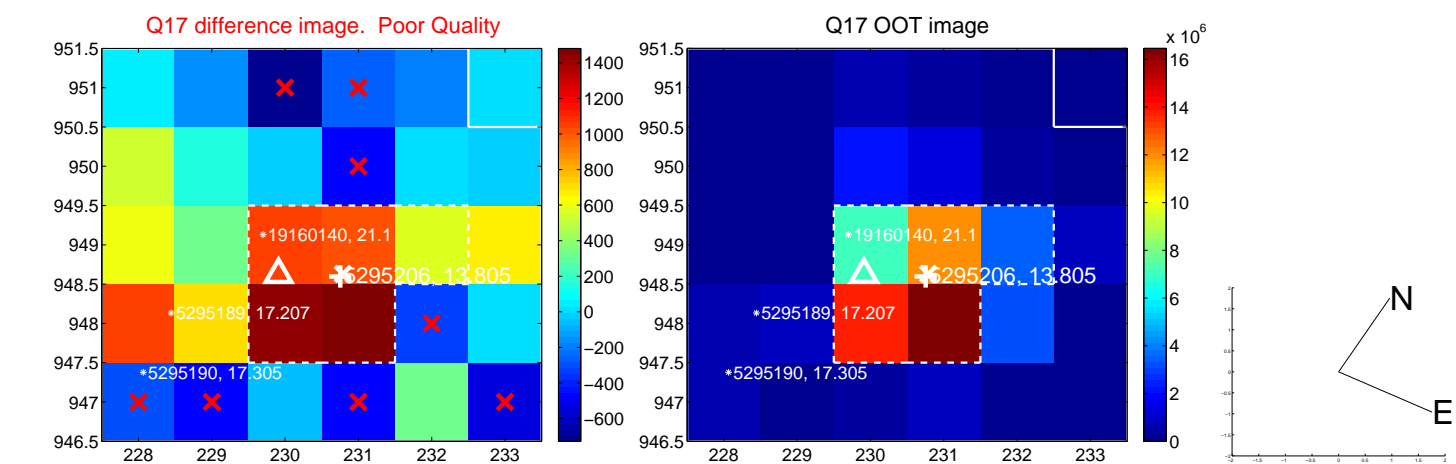
white \times : KIC target position; +: OOT centroid; \triangle : difference centroid. red \times : large negative pixel value.



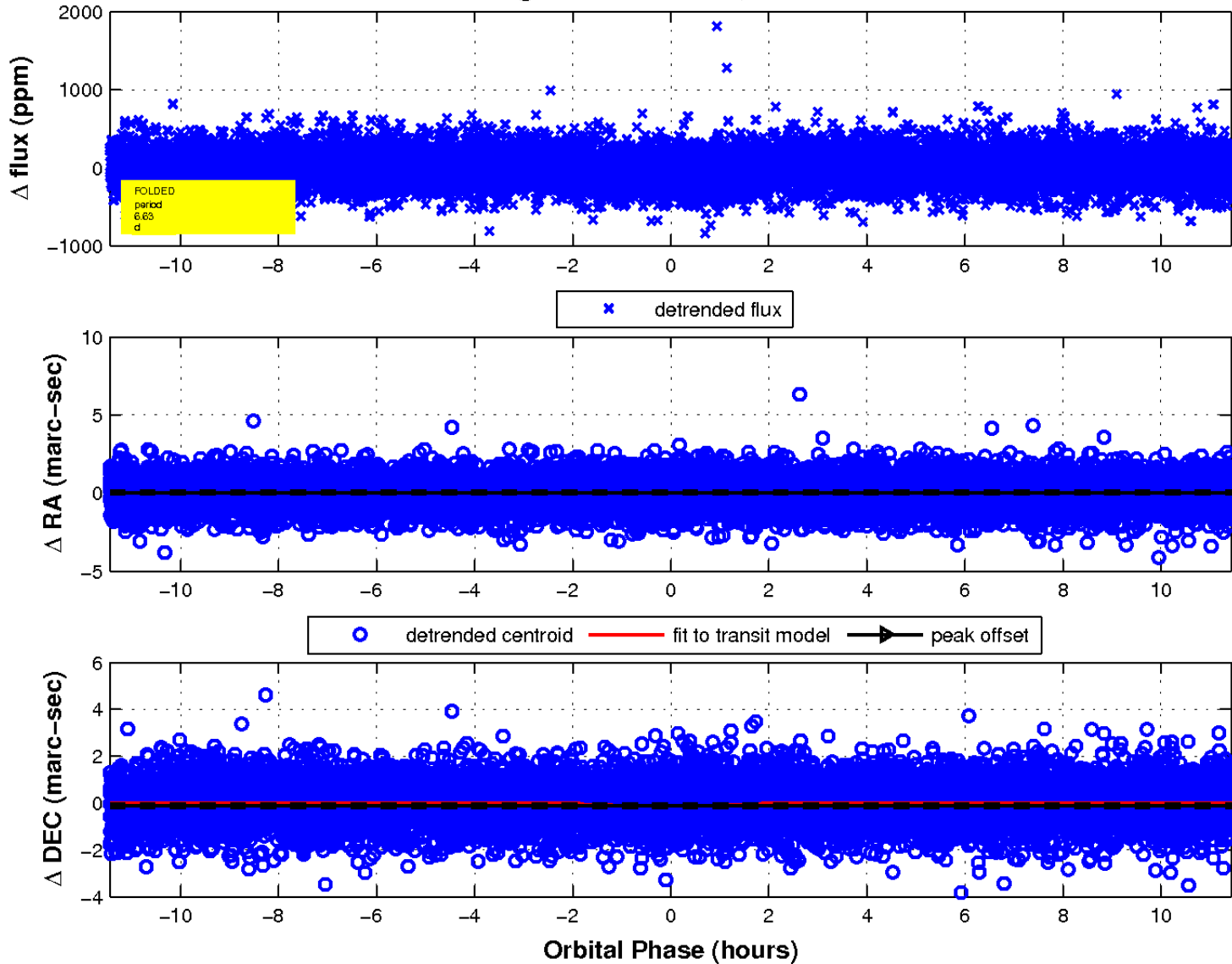
white \times : KIC target position; +: OOT centroid; \triangle : difference centroid. red \times : large negative pixel value.



white \times : KIC target position; +: OOT centroid; \triangle : difference centroid. red \times : large negative pixel value.



fluxWeightedCentroids, Planet 1 of 1



UKIRT Image

Declination

