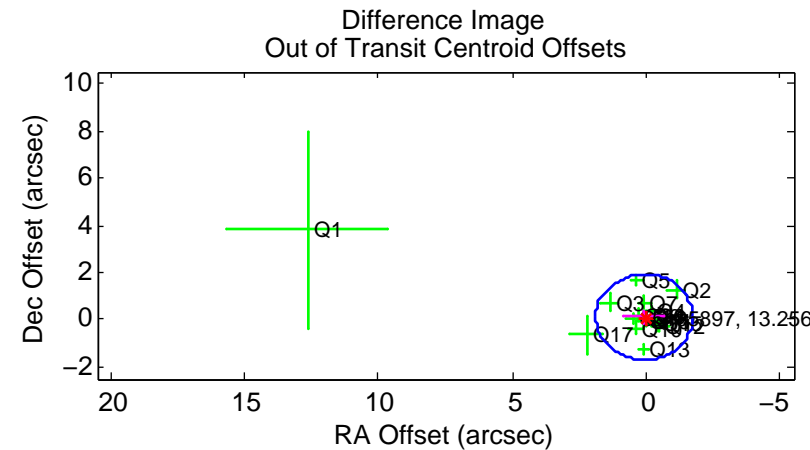
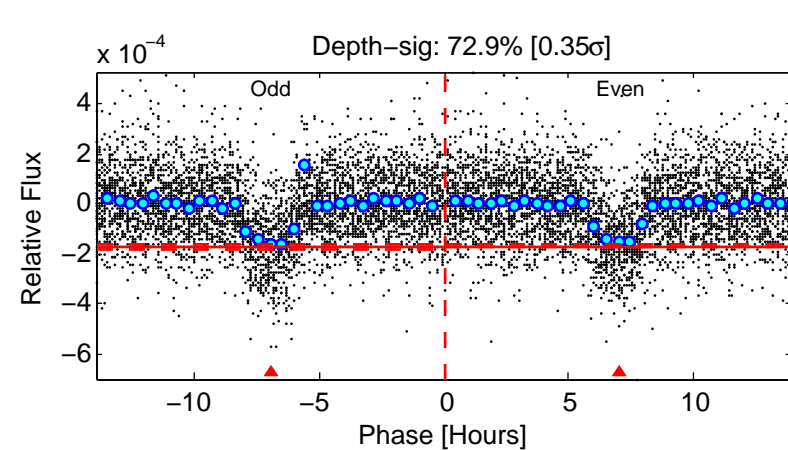
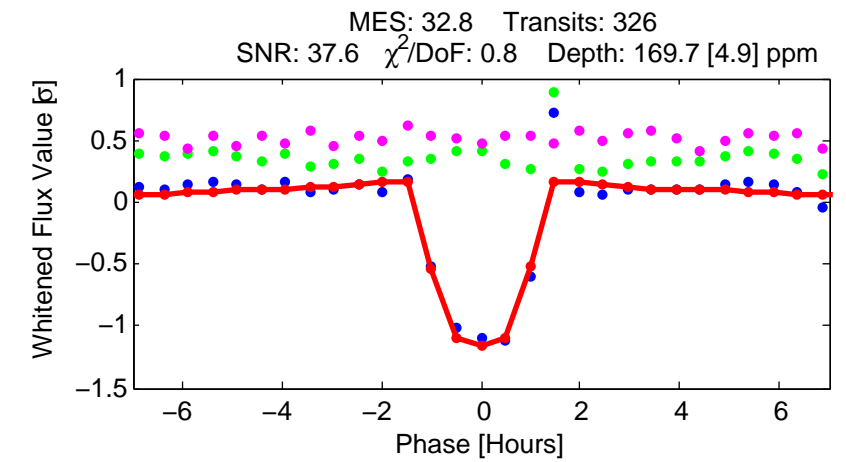
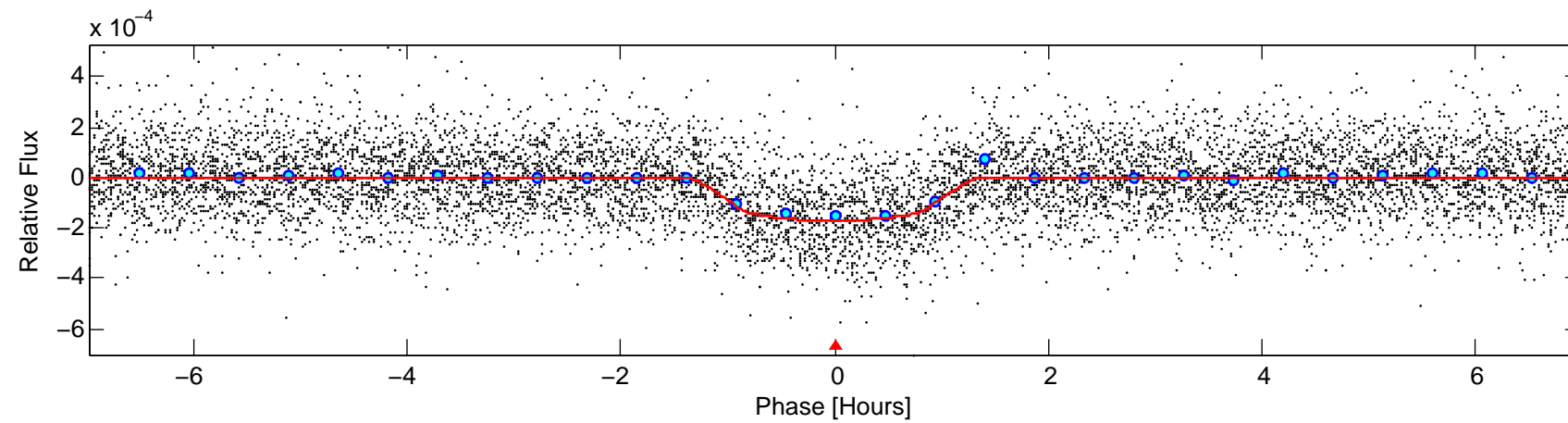
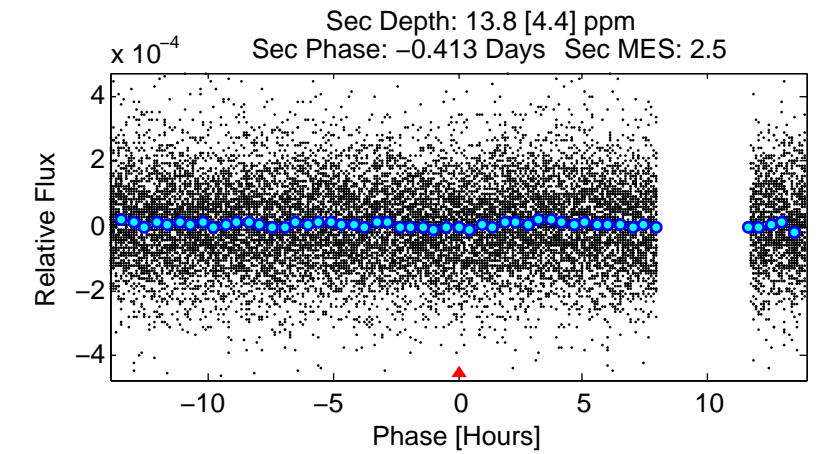
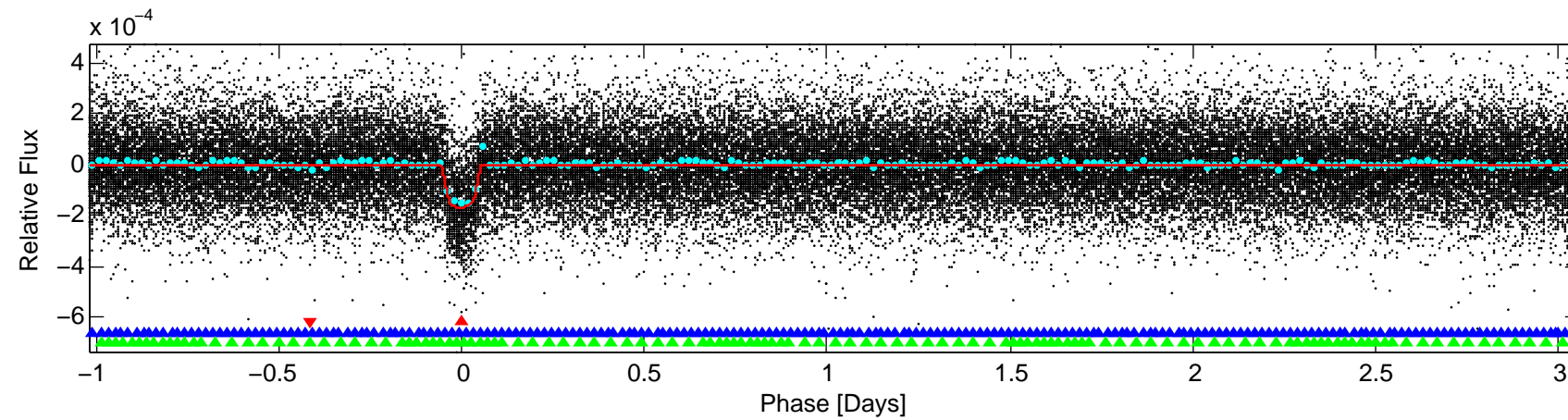
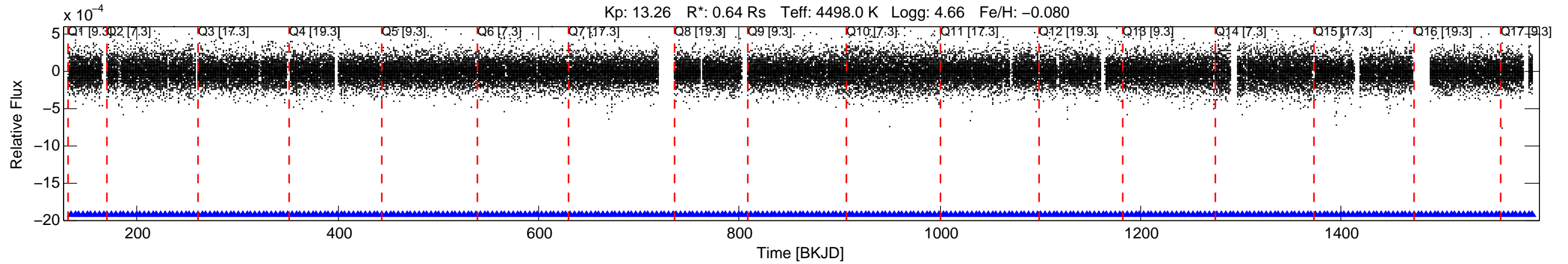


KIC: 5185897 Candidate: 1 of 3 Period: 4.081 d
KOI: K02693.01 Name: Kepler-398b Corr: 0.986



DV Fit Results:

Period = 4.08140 [0.00001] d
Epoch = 133.8614 [0.0010] BKJD
Rp/R* = 0.0145 [0.0035]
a/R* = 6.72 [5.80]
b = 0.88 [0.23]
Seff = 76.99 [8.71]
Teq = 755 [21] K
Rp = 1.00 [0.25] Re
a = 0.0438 [0.0025] AU
Ag = 14.49 [8.54] [1.58σ]
Teffp = 2279 [336] K [4.53σ]

DV Diagnostic Results:

ShortPeriod-sig: N/A
LongPeriod-sig: 100.0% [20.51σ]
ModelChiSquare2-sig: N/A
ModelChiSquareGof-sig: N/A
Bootstrap-pfa: 1.96e-224
RollingBand-fgt: 1.00 [311/311]
GhostDiagnostic-chr: 5.602
Centroid-sig: 1.4%
Centroid-so: 0.451 arcsec [1.76σ]
OotOffset-rm: 0.135 arcsec [0.22σ]
KicOffset-rm: 0.634 arcsec [1.07σ]
OotOffset-st: 4/4/4/5 [17]
KicOffset-st: 4/4/4/5 [17]
DiffImageQuality-fgm: 0.94 [16/17]
DiffImageOverlap-fno: 1.00 [17/17]