

# KIC 005184863

## Q1-17 DR25 TCE Parameters

TCE	Run Type	KOI?	Period (Days)	Epoch (BKJD)	Depth (ppm)	Duration (Hours)	MES	SNR	$R_{\star}$ ( $R_{\odot}$ )	$T_{\star}$ (K)	$R_p$ ( $R_{\oplus}$ )	$S_p$ ( $S_{\oplus}$ )
005184863-01	OBS	No	9.037867	133.017300	58.3	27.982	9.2	9.7	2.15	6858	3.32	966.56

## Robovetter Results

TCE	Run Type	Disp	Score	N	S	C	E	Comments
005184863-01	OBS	FP	0.00	1	0	0	0	LPP_DV

**Notes:** OBS = Observed. INJ = Injected. INV = Inverted. SCR = Scrambled.

N = Not Transit-Like. S = Stellar Eclipse. C = Centroid Offset. E = Ephemeris Match.

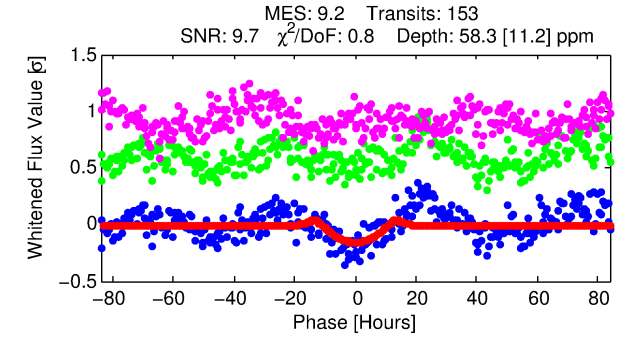
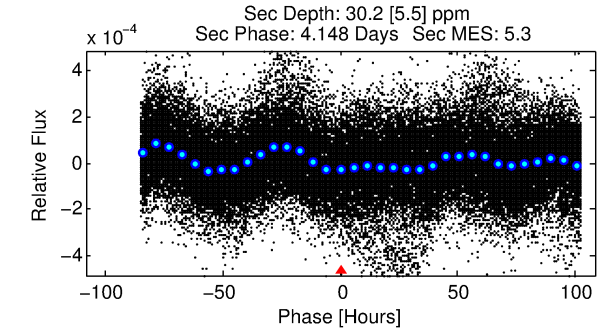
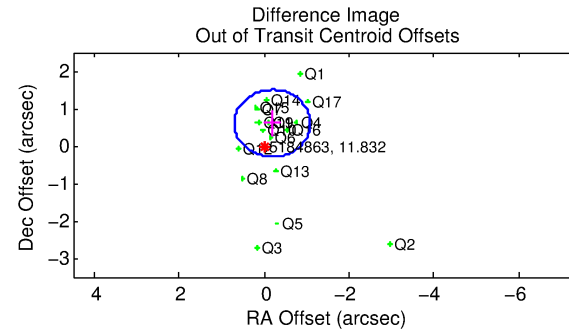
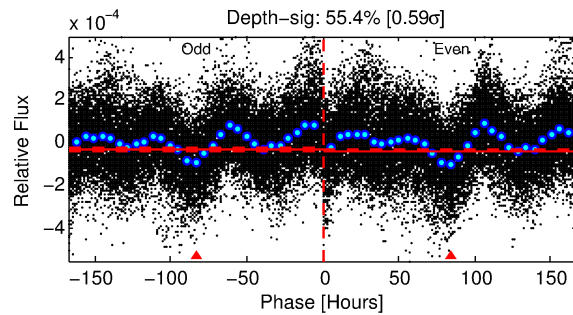
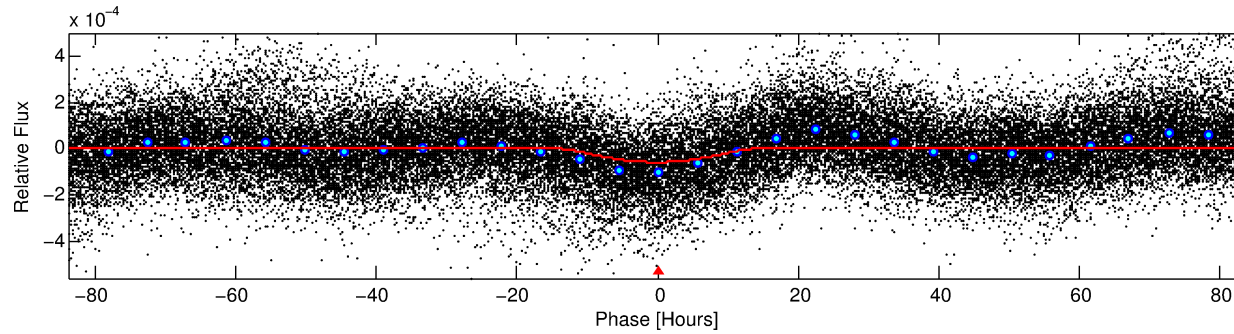
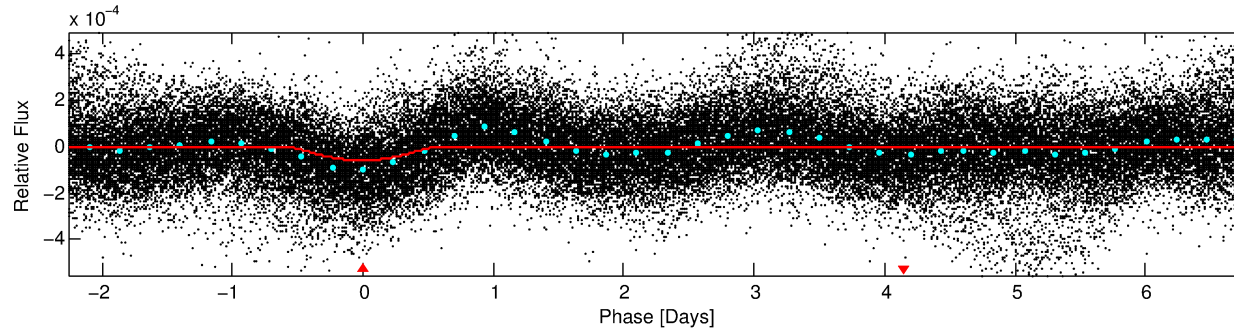
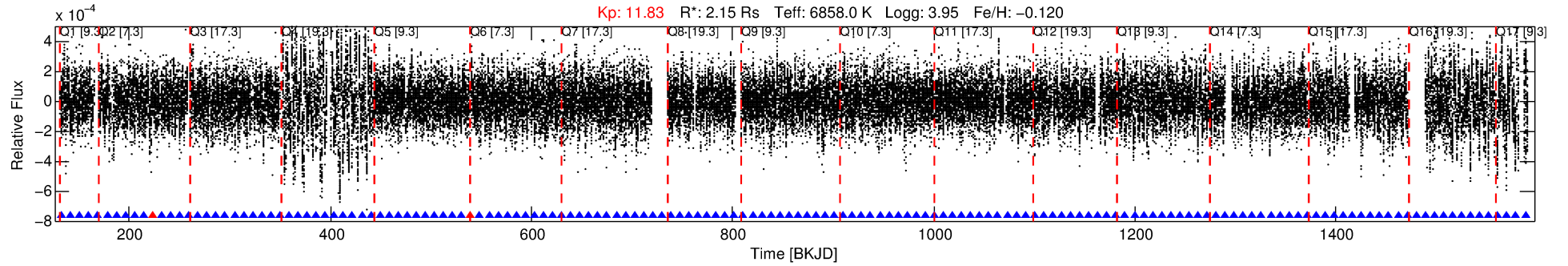
See [http://exoplanetarchive.ipac.caltech.edu/docs/API\\_kepcandidate\\_columns.html#proj\\_disp\\_col](http://exoplanetarchive.ipac.caltech.edu/docs/API_kepcandidate_columns.html#proj_disp_col) for comment definitions.

## Ephemeris Match Information For 005184863-01

No Significant Match Found

# DV One-Page Summary

KIC: 5184863 Candidate: 1 of 1 Period: 9.038 d



## DV Fit Results:

Period = 9.03787 [0.00058] d  
Epoch = 133.0173 [0.0530] BKJD  
Rp/R\* = 0.0141 [0.0201]  
a/R\* = 1.09 [0.04]  
b = 1.00 [0.03]  
Seff = 966.56 [412.19]  
Teq = 1422 [152] K  
Rp = 3.32 [4.83] Re  
a = 0.0976 [0.0254] AU  
Ag = 14.36 [41.51] [0.32 $\sigma$ ]  
Teff = 4279 [3064] K [0.93 $\sigma$ ]

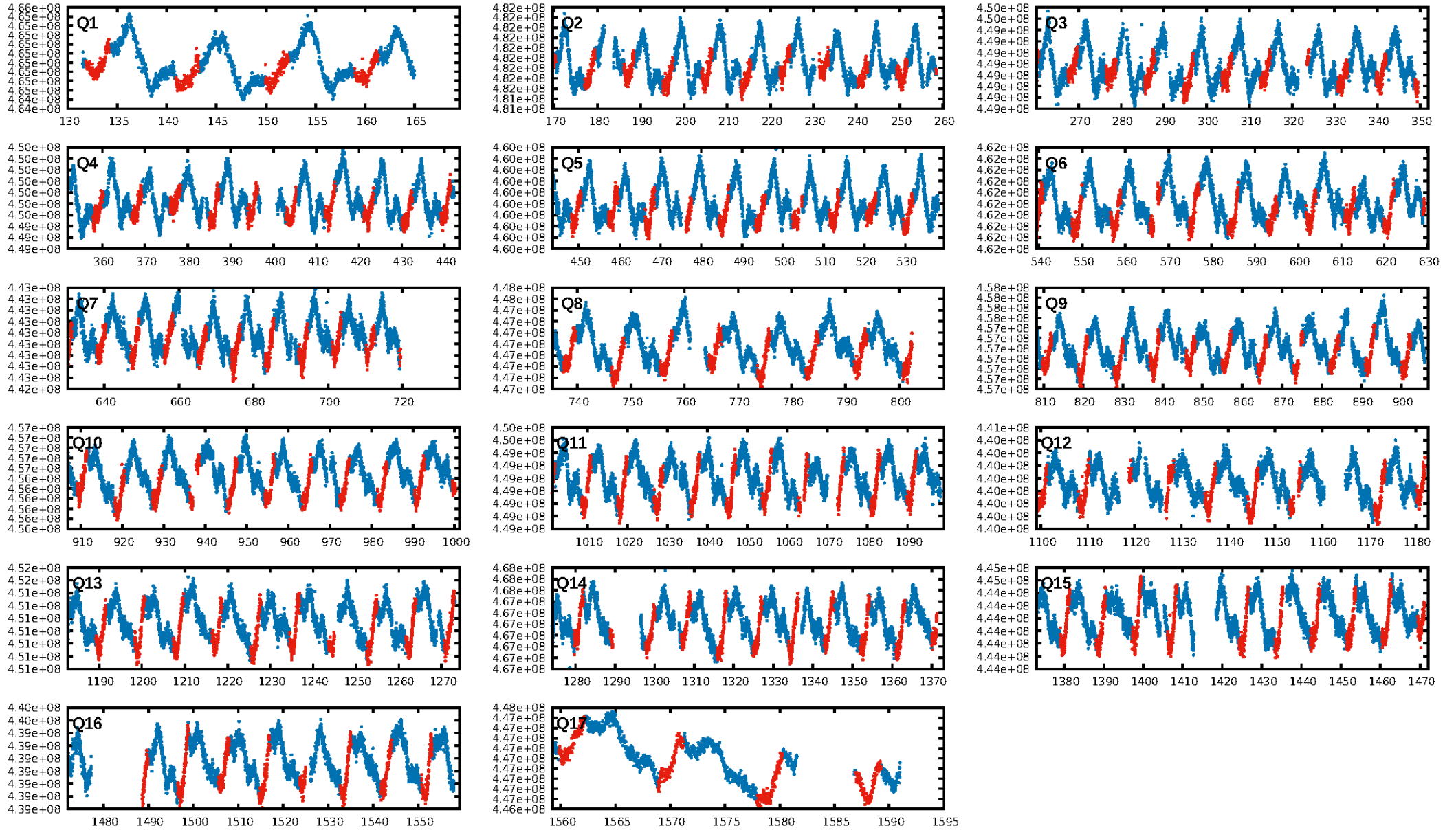
## DV Diagnostic Results:

ShortPeriod-sig: N/A  
LongPeriod-sig: N/A  
ModelChiSquare2-sig: 99.9%  
ModelChiSquareGof-sig: 100.0%  
Bootstrap-pfa: 4.59e-19  
RollingBand-fgt: 0.99 [143/145]  
GhostDiagnostic-chr: 1.009  
Centroid-sig: 84.9%  
Centroid-so: 0.122 arcsec [0.42 $\sigma$ ]  
OotOffset-rm: 0.635 arcsec [2.13 $\sigma$ ]  
OotOffset-st: 4/4/4/5 [17]  
KicOffset-rm: 0.708 arcsec [2.27 $\sigma$ ]  
KicOffset-st: 4/4/4/5 [17]  
DiffImageQuality-fgm: 0.88 [15/17]  
DiffImageOverlap-fno: 1.00 [17/17]

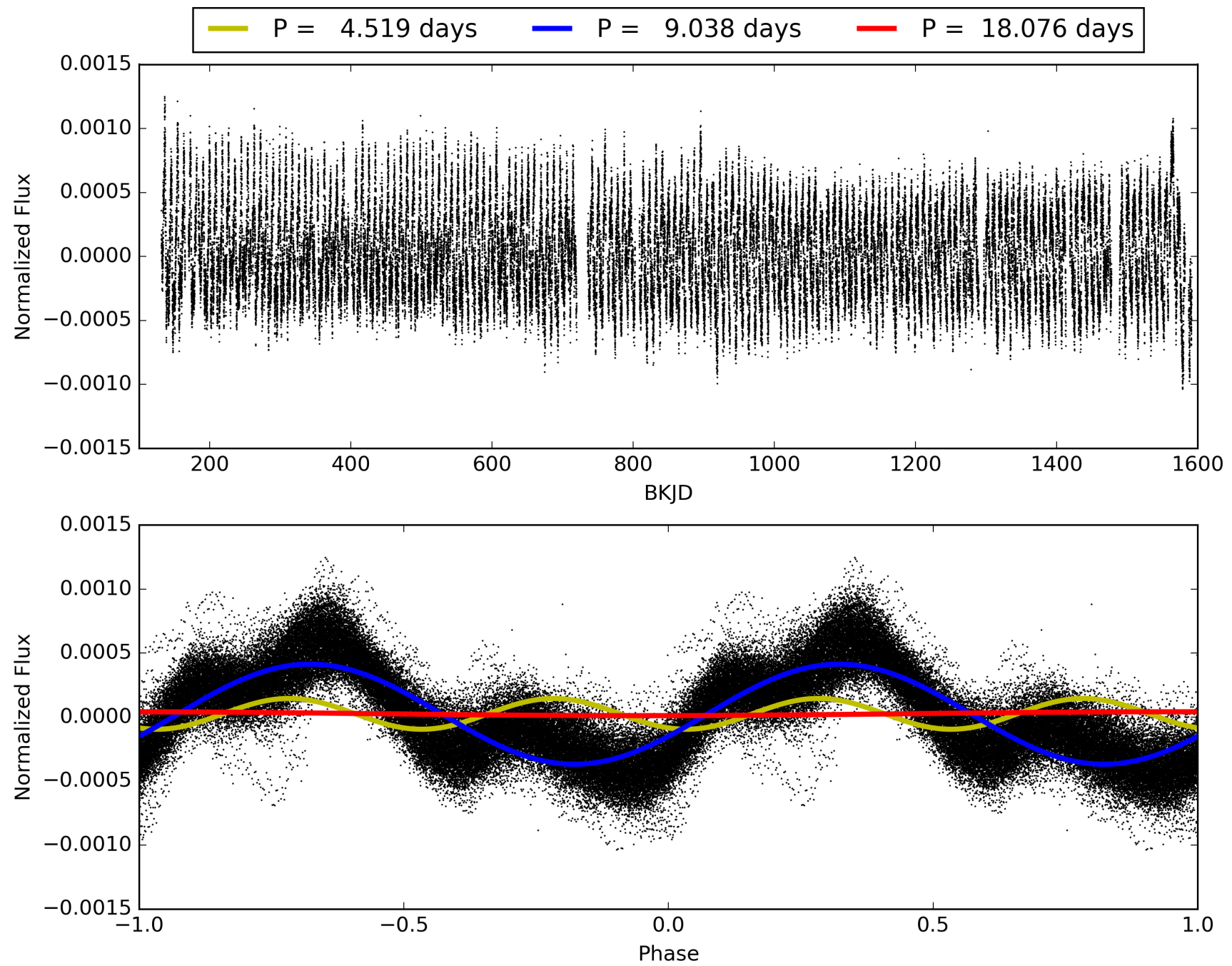
Software Revision: svn+ssh://murzim/repo/soc/tags/release/9.3.42@60958 -- Date Generated: 31-Jan-2016 05:23:45 Z

This Data Validation Report Summary was produced in the Kepler Science Operations Center Pipeline at NASA Ames Research Center

# TCE 005184863-01, PDC Light Curves

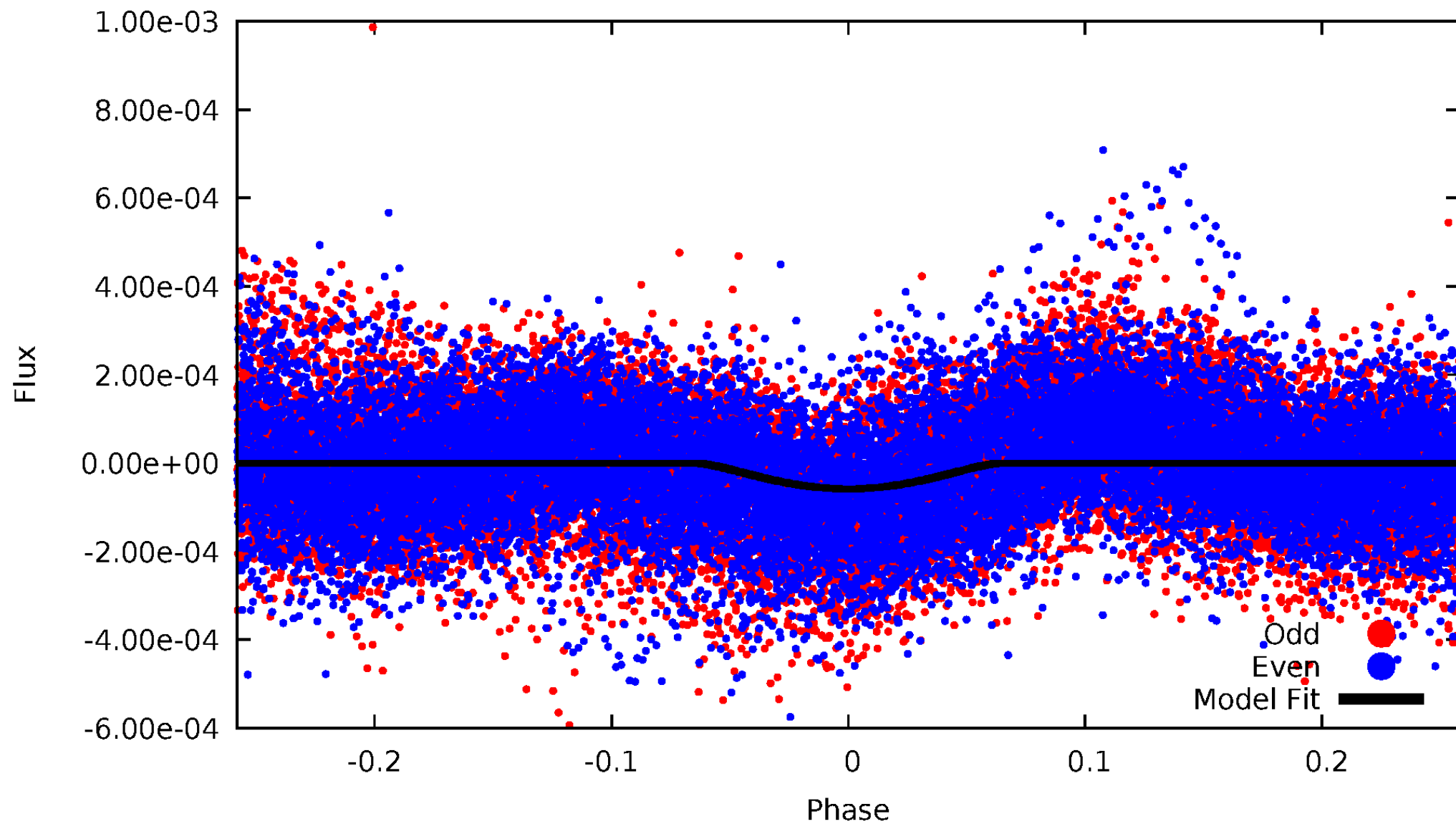


TCE 005184863-01



# DV Odd/Even

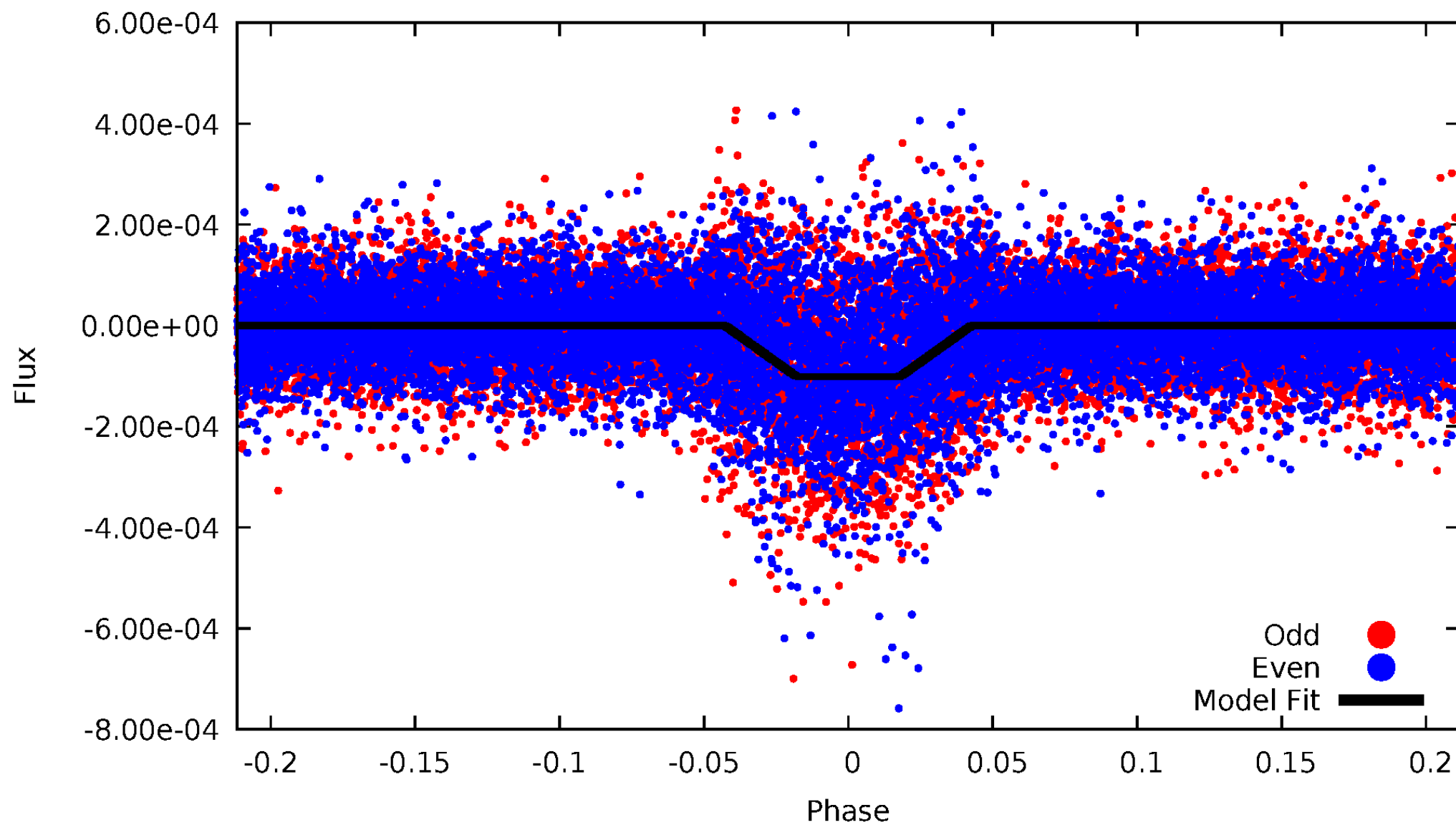
TCE 005184863-01





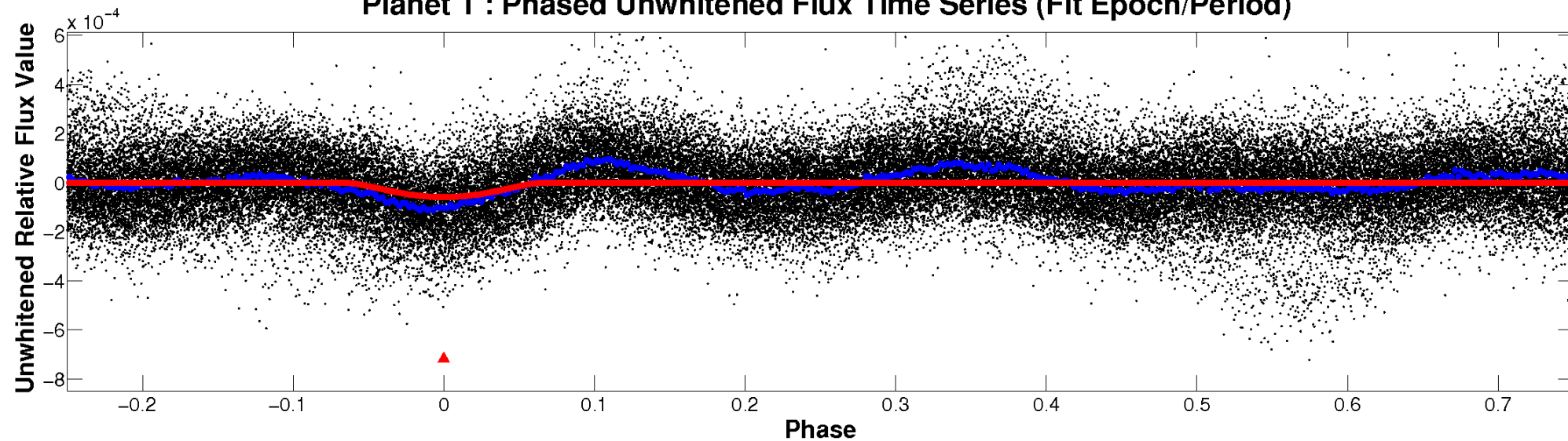
# ALT Odd/Even

TCE 005184863-01

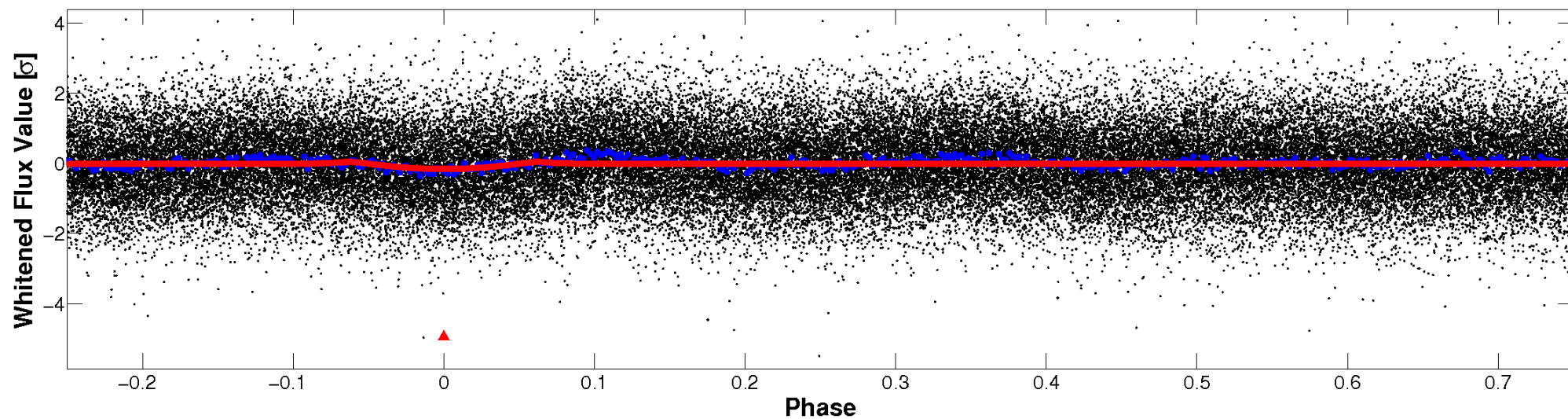


# Non-Whitened Vs. Whitened Light Curve

**Planet 1 : Phased Unwhitened Flux Time Series (Fit Epoch/Period)**

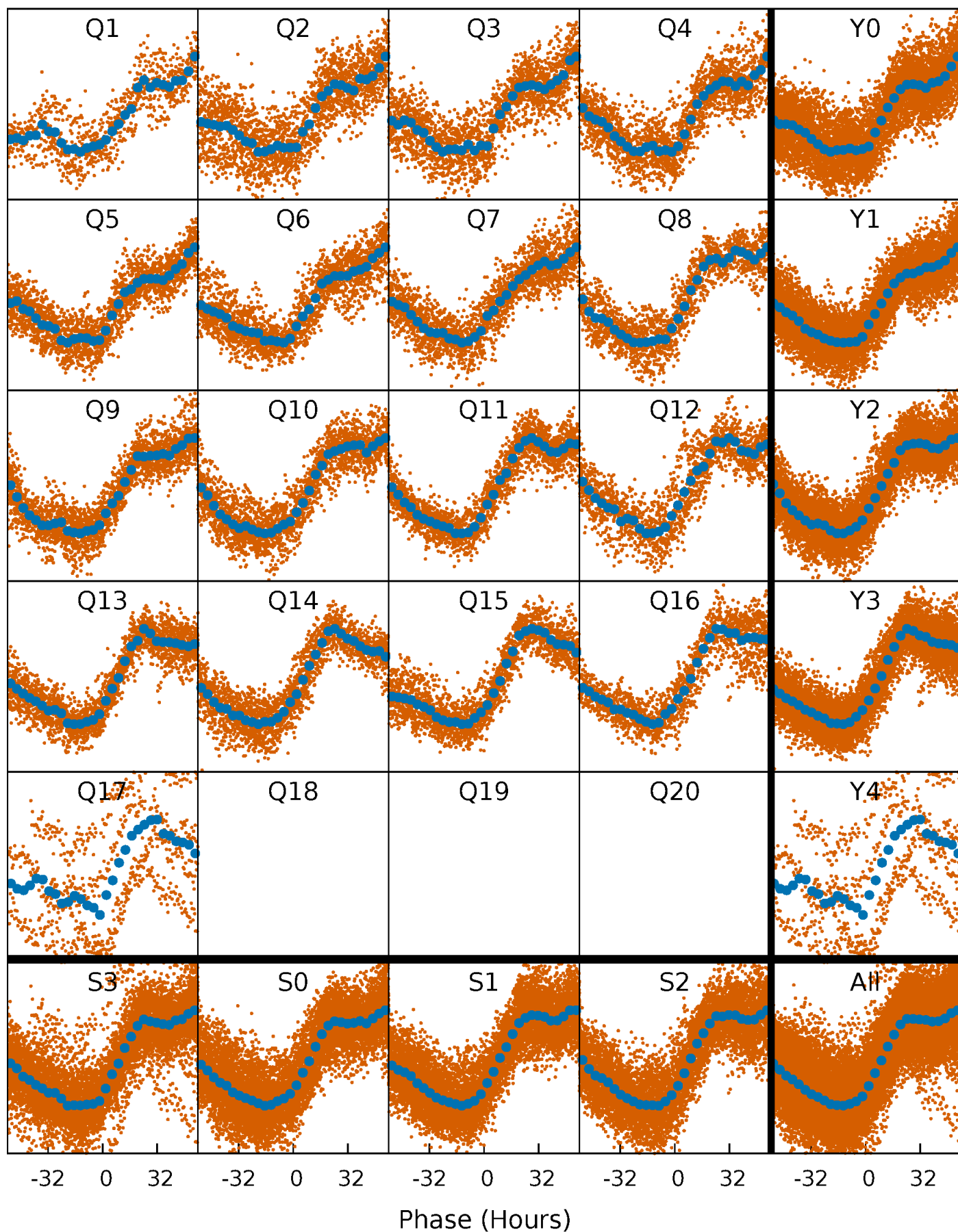


**Planet 1 : Phased Whitened Flux Time Series (Fit Epoch/Period)**



## PDC Quarter-Phased Transit Curves

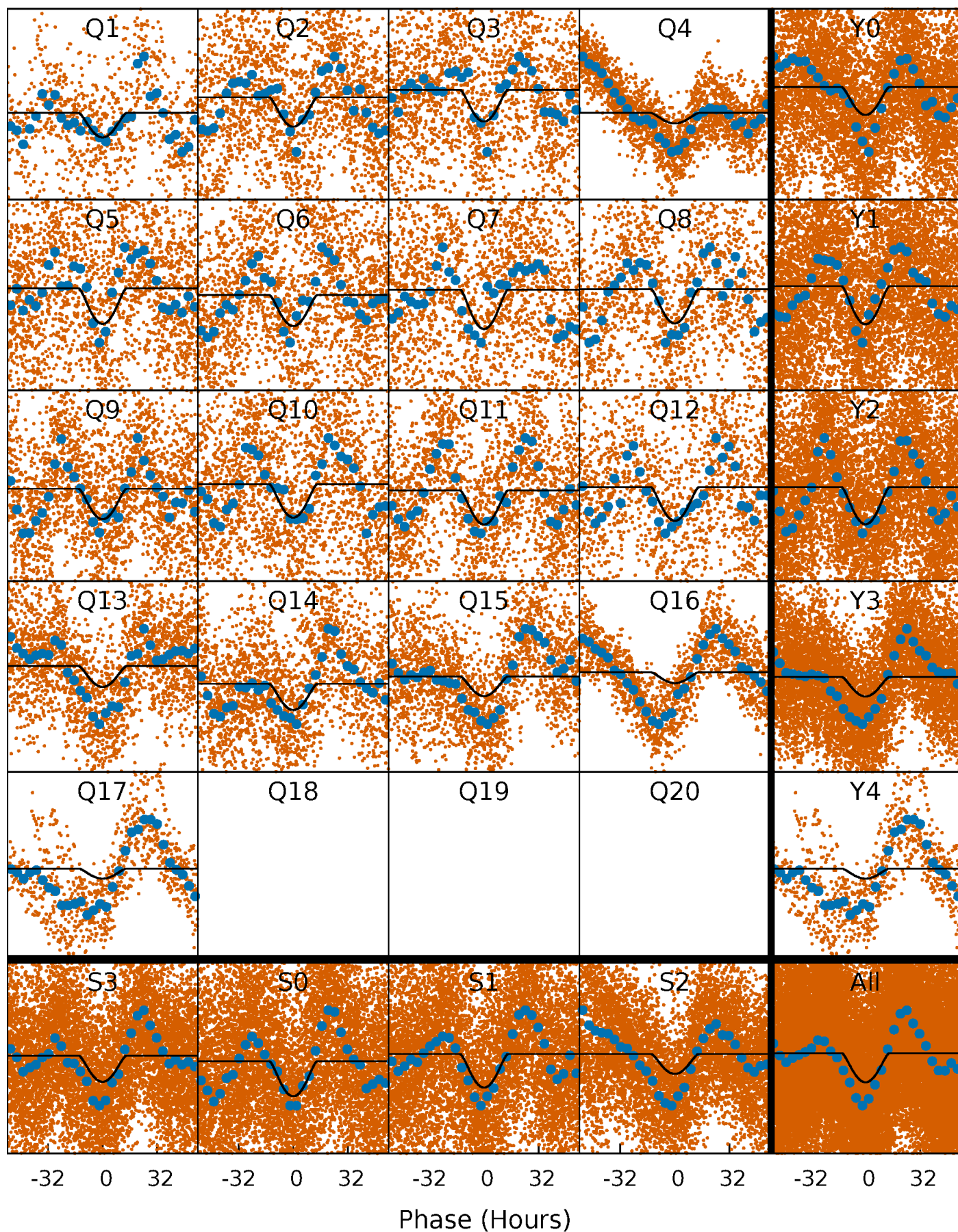
TCE 005184863-01   P= 9.037867 Days    $T_0=133.017300$  (BKJD)





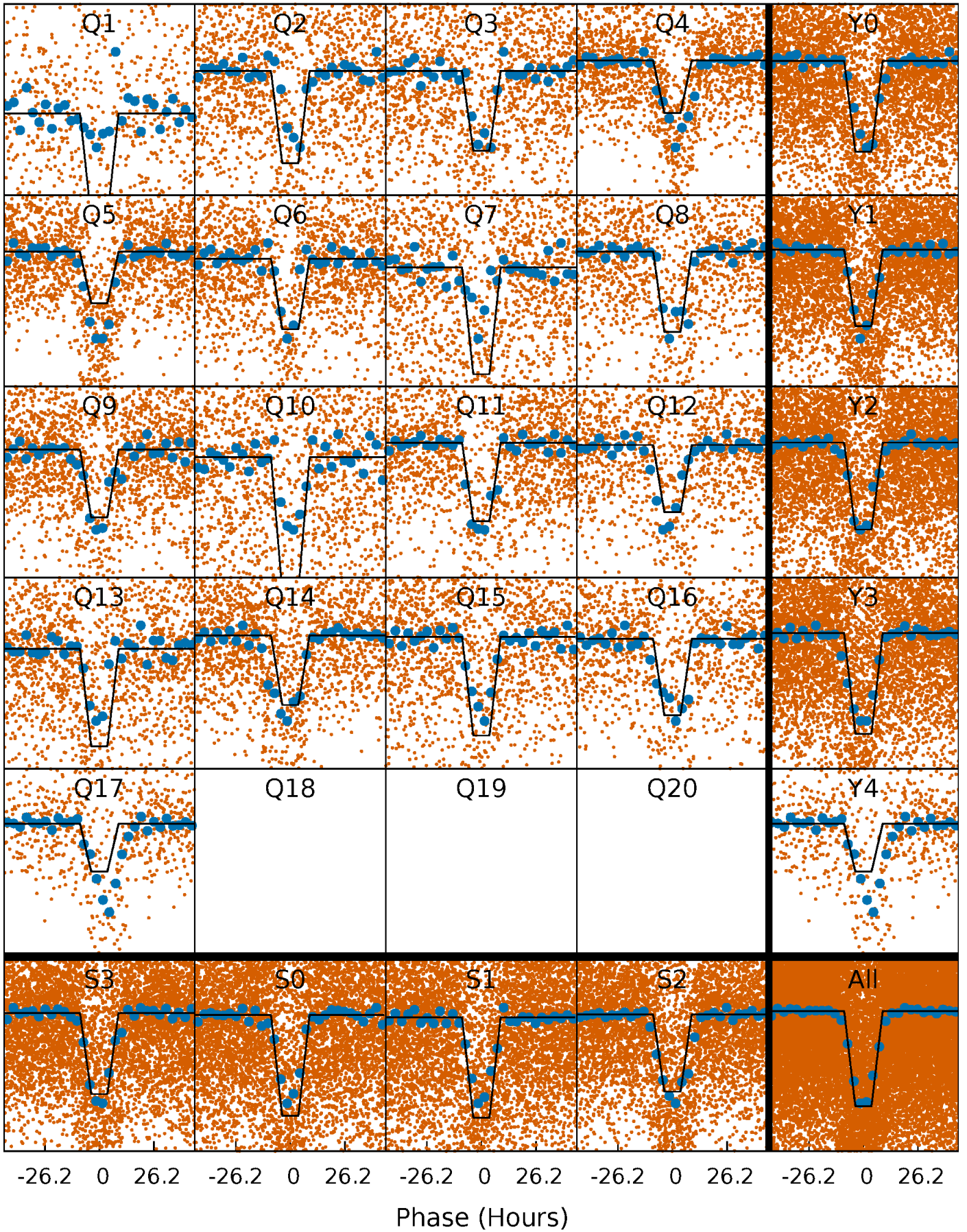
# DV Quarter-Phased Transit Curves

TCE 005184863-01 P= 9.037867 Days  $T_0=133.017300$  (BKJD)



# Alt. Detrend Quarter-Phased Transit Curves

TCE 005184863-01 P= 9.037611 Days  $T_0=132.950184$  (BKJD)

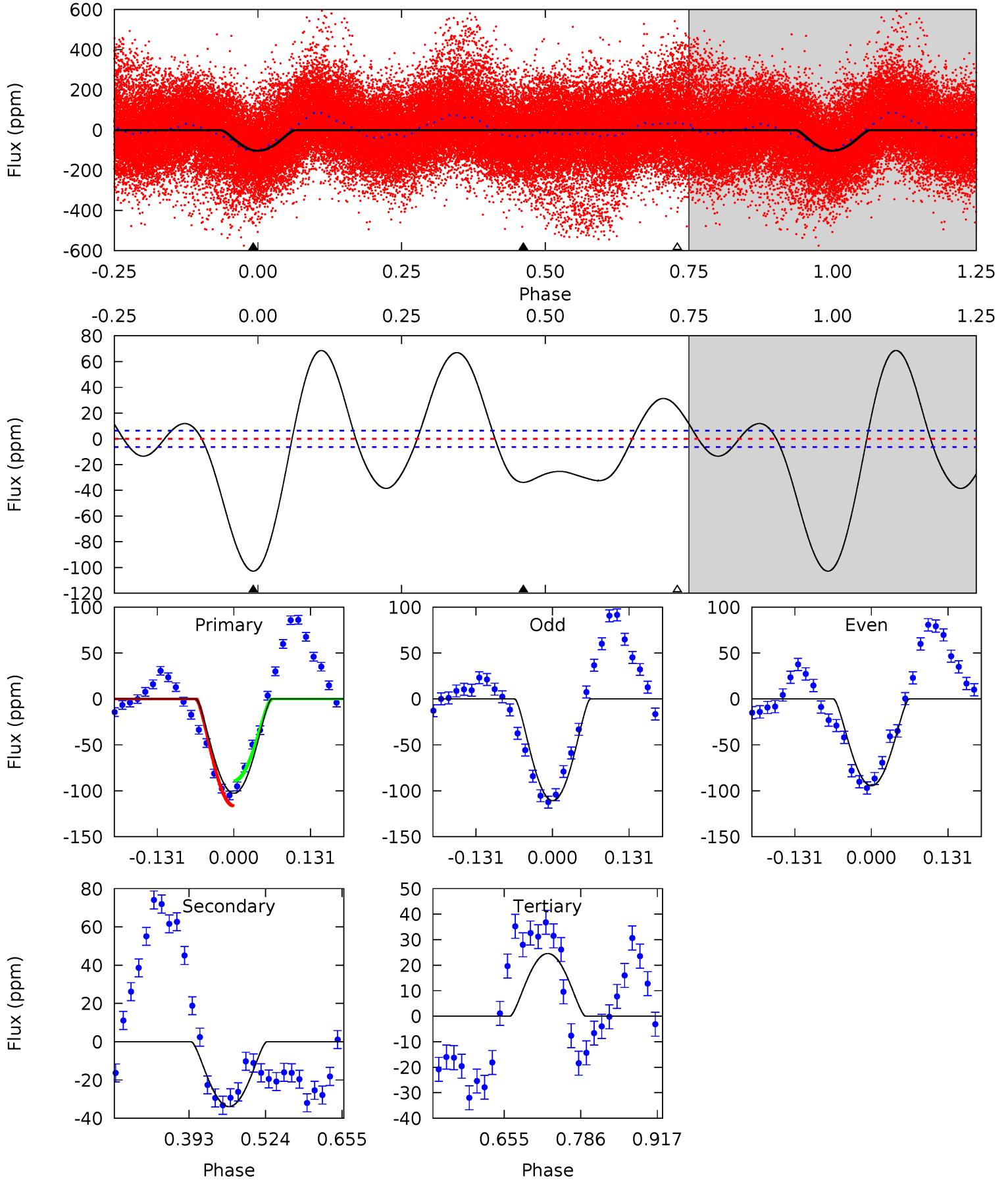




# DV Model-Shift Uniqueness Test

005184863-01, P = 9.037867 Days, E = 123.979433 Days

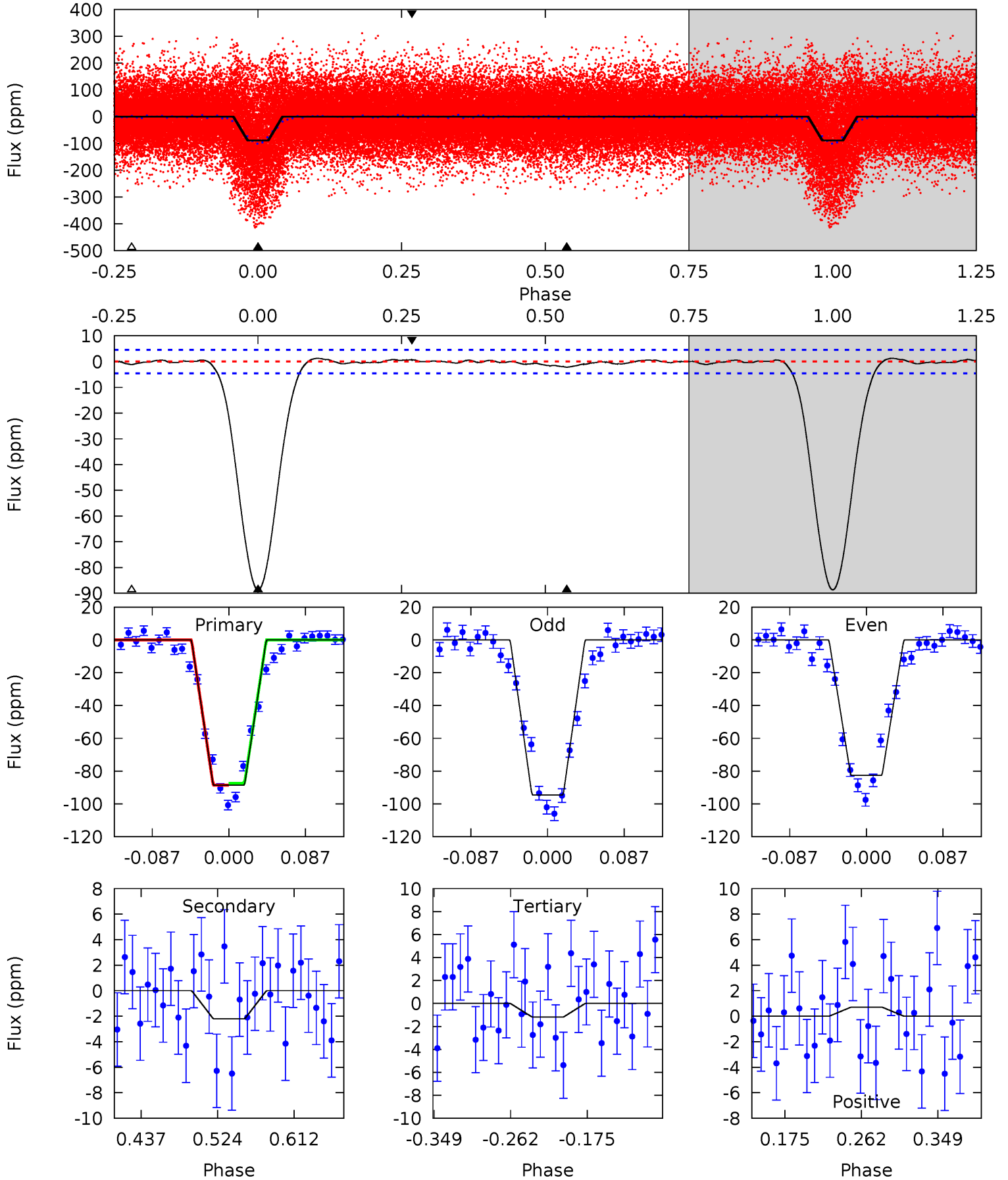
Pri	Sec	Ter	Pos	FA <sub>1</sub>	FA <sub>2</sub>	F <sub>Red</sub>	Pri-Ter	Pri-Pos	Sec-Ter	Sec-Pos	Odd-Evn	DMM	Shape	TAT
72.9	24.0	-17.4	0	4.51	1.51	18.7	90.3	72.9	41.4	24.0	5.80	1.04	0.40	9.62



# Alt Model-Shift Uniqueness Test

005184863-01, P = 9.037611 Days, E = 123.912573 Days

Pri	Sec	Ter	Pos	FA <sub>1</sub>	FA <sub>2</sub>	F <sub>Red</sub>	Pri-Ter	Pri-Pos	Sec-Ter	Sec-Pos	Odd-Evn	DMM	Shape	TAT
88.8	2.21	1.18	0.71	4.59	1.71	0.48	87.6	88.0	1.03	1.50	5.95	0.92	0.01	0.61



### Stellar Parameters For KIC 005184863

	$T_{\text{eff}} (K)$	$\log(g)$	$[\text{Fe}/\text{H}]$	$R (R_{\odot})$	$M (M_{\odot})$	$p_{\star} (\text{g}\cdot\text{cm}^{-3})$
	$6858^{+163}_{-225}$	$3.952^{+0.234}_{-0.126}$	$-0.120^{+0.300}_{-0.300}$	$2.155^{+0.444}_{-0.610}$	$1.514^{+0.183}_{-0.275}$	$0.213^{+0.315}_{-0.083}$
	+2%/-3%	+6%/-3%	+250%/-250%	+21%/-28%	+12%/-18%	+148%/-39%
Source	PHO1	FLK73	KIC0	DSEP		

KIC = Kepler Input Catalog; PHO = Photometry; SPE = Spectroscopy; AST = Asteroseismology  
 TRA = Transits; DESP = Dartmouth Models; MULT = Multiple Models

### Secondary Eclipse Parameters for KIC 005184863-01 / KOI

Detrend	Depth (ppm)	$R_p (R_{\oplus})$	$T_{\text{max}} (K)$	$T_{\text{obs}} (K)$	$A_{\text{obs}}$
DV	$-34 \pm 1$	$4.56^{+4.22}_{-2.94}$	$1965^{+121}_{-157}$	$3922^{+2181}_{-744}$	$8.226^{+55.472}_{-5.917}$
Alt.	$-2 \pm 1$	$3.98^{+3.79}_{-2.78}$	$1967^{+116}_{-154}$	$2483^{+1395}_{-4768}$	$0.637^{+7.647}_{-0.489}$

$T_{\text{max}}$  = Theoretical Maximum Planetary Temperature  
 $T_{\text{obs}}$  = Observed Planetary Temperature (Assuming  $A=0.3$ )  
 $A_{\text{obs}}$  = Observed Albedo (Assuming  $T=0$ )

If a secondary eclipse is present, the system is likely an EB if  $T_{\text{obs}} \gg T_{\text{max}}$  AND  $A_{\text{obs}} \gg 1.0$



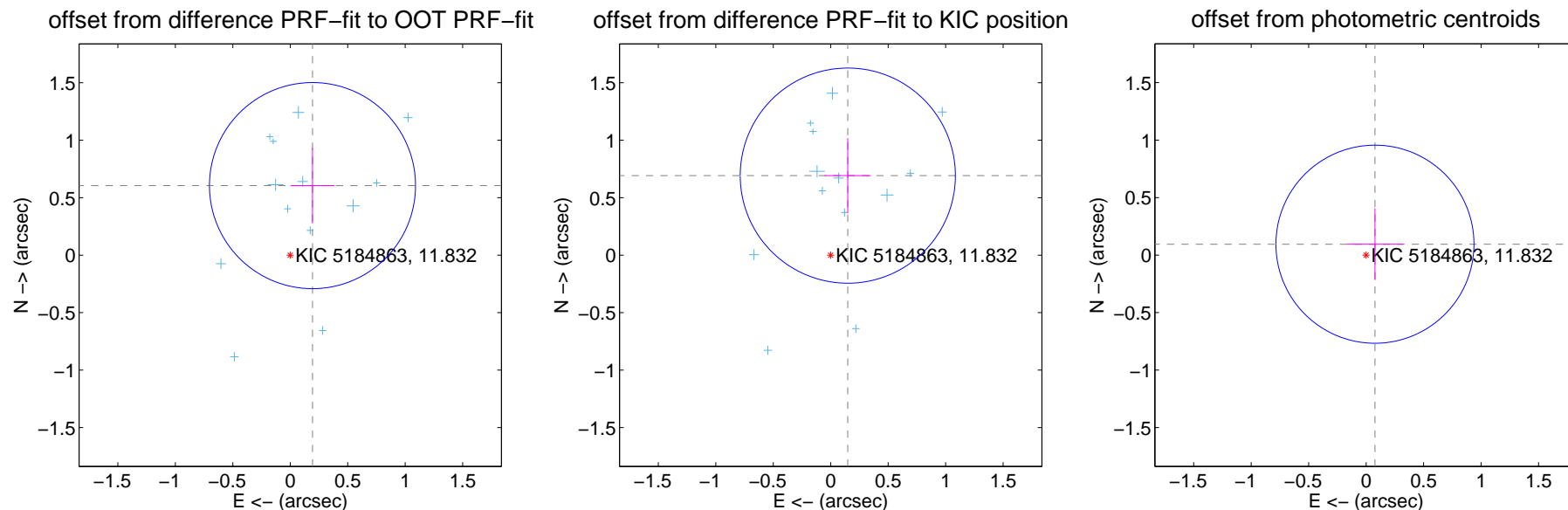
## DV Centroid Data

Supplemental centroid analysis for 005184863-01. **Kepler magnitude: 11.83.** Transit SNR 9.68

There are 15 quarters with good PRF difference image offsets

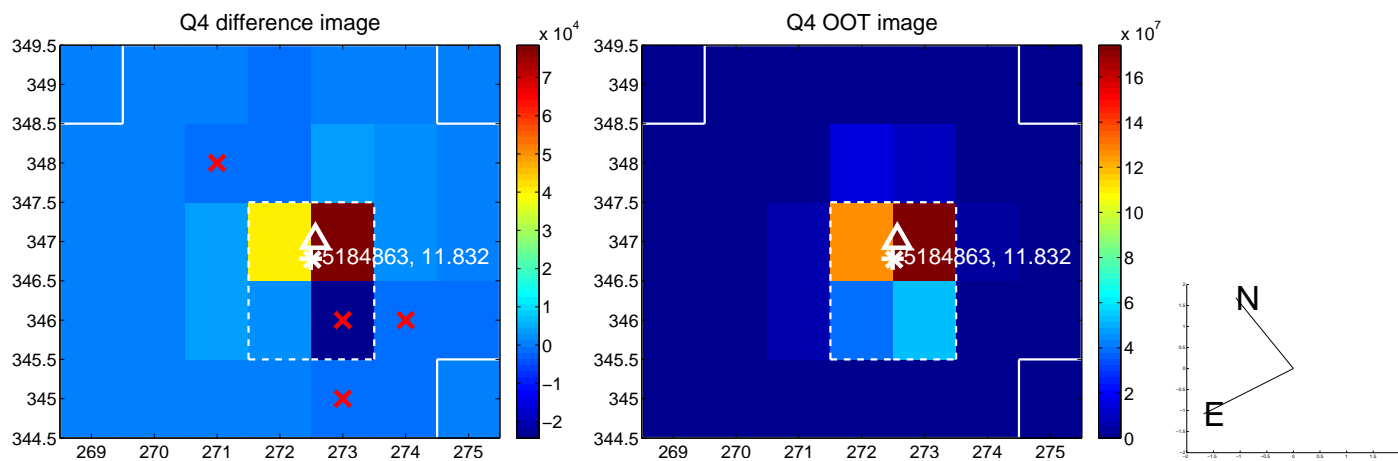
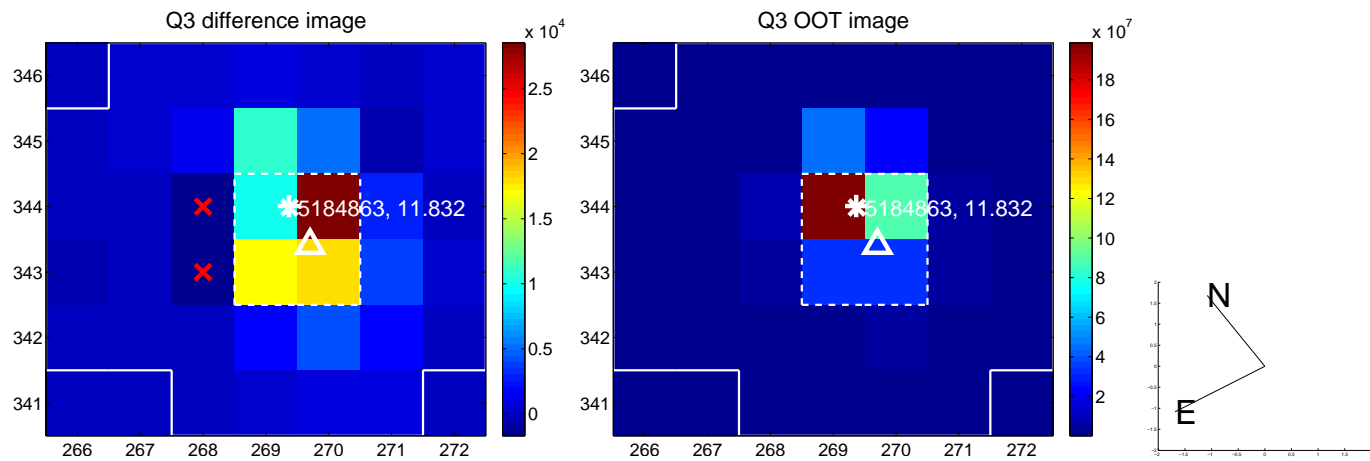
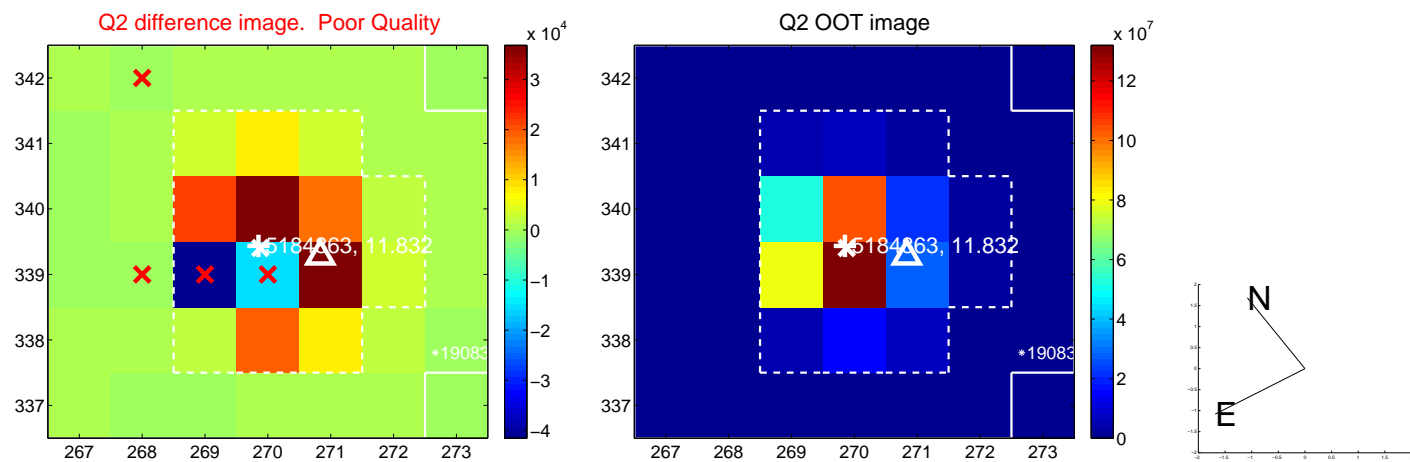
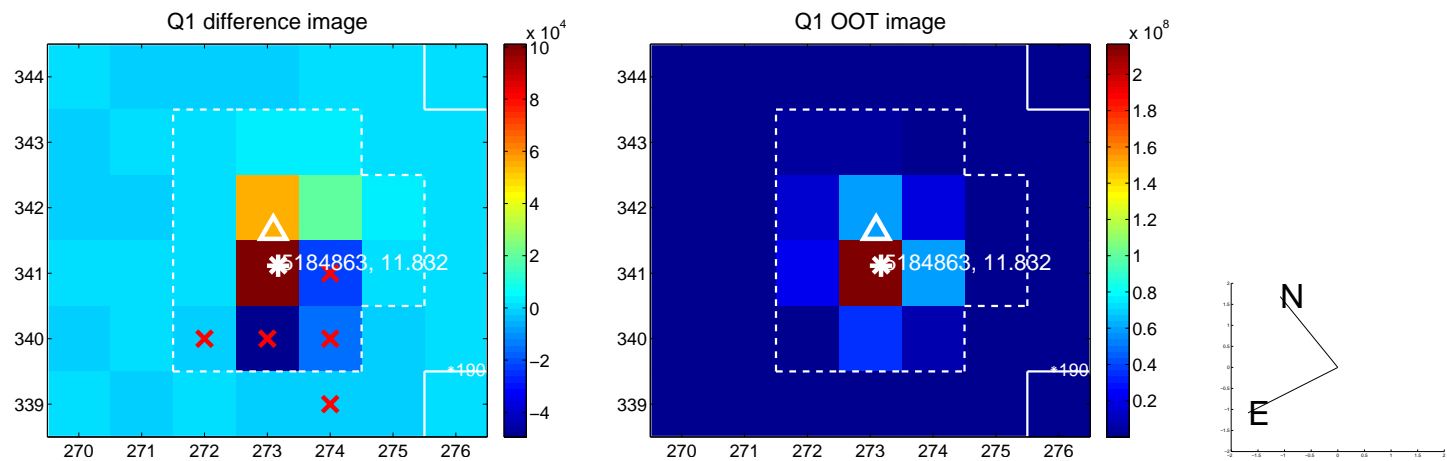
The direct PRF centroid is offset from the target star catalog position by about 0.07 arcsec

	Distance in arcsec	Distance / $\sigma$	$\Delta$ RA	$\Delta$ Dec
PRF-fit source offset from OOT	$0.635 \pm 0.299$	2.13	$-0.193 \pm 0.191$	$0.605 \pm 0.329$
PRF-fit source offset from KIC position	$0.708 \pm 0.312$	2.27	$-0.149 \pm 0.201$	$0.692 \pm 0.325$
photometric centroid source offset	$0.12 \pm 0.29$	0.42	$-0.08 \pm 0.24$	$0.09 \pm 0.31$



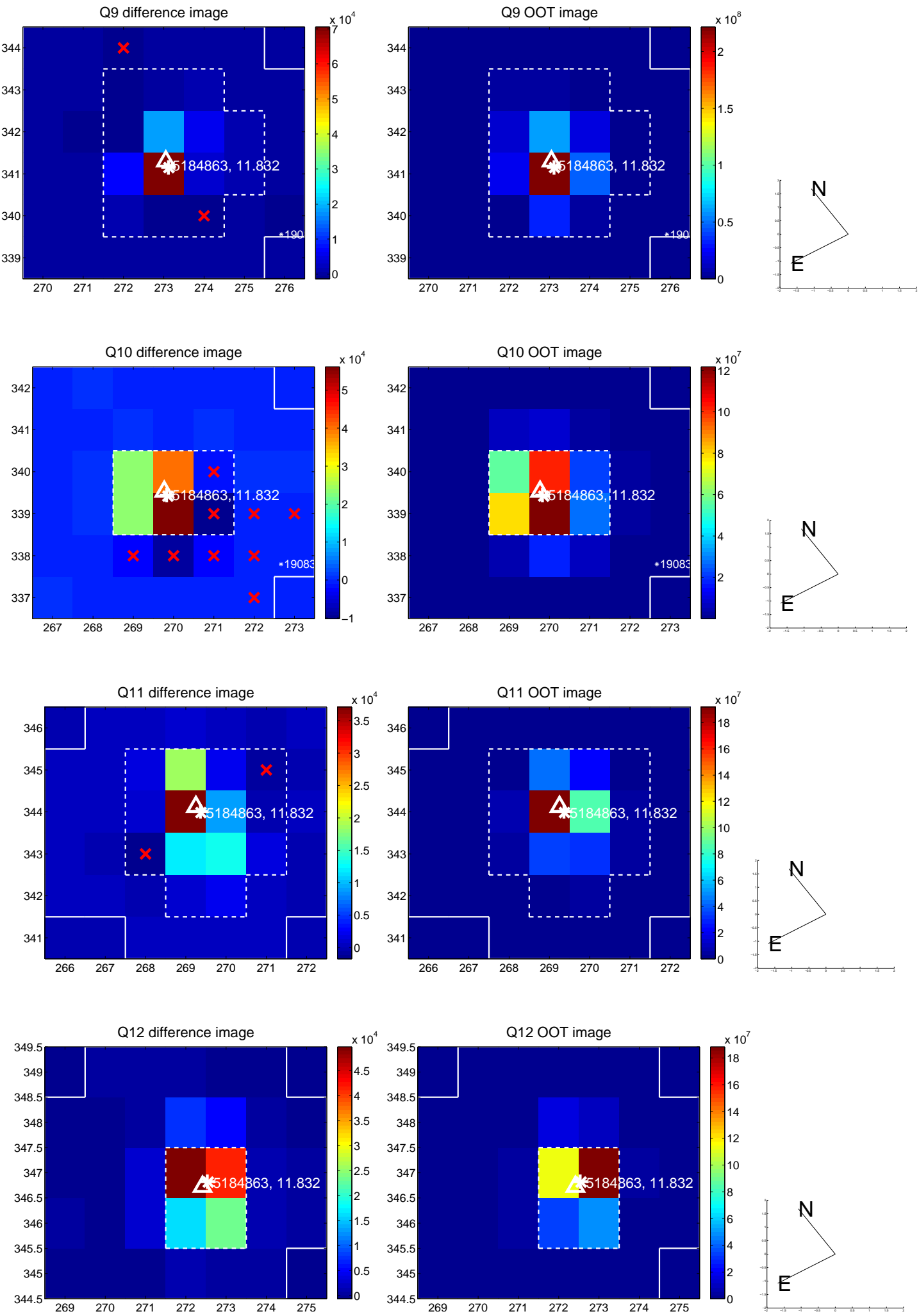
Centroid source offsets from the target star reconstructed from PRF and photometric centroids. **Sky blue crosses: good quarterly centroid offsets; Vermillion crosses: bad quarterly centroid offsets;** magenta cross: average over quarters. Length of the crosses: one- $\sigma$  uncertainty. Blue circle: three- $\sigma$ . Red \*: target star. Blue \*: Other stars. Text next to a star gives its KIC ID and kepmag. KIC IDs > 15,000,000 are from the UKIRT catalog.

white  $\times$ : KIC target position;  $+$ : OOT centroid;  $\triangle$ : difference centroid. red  $\times$ : large negative pixel value.

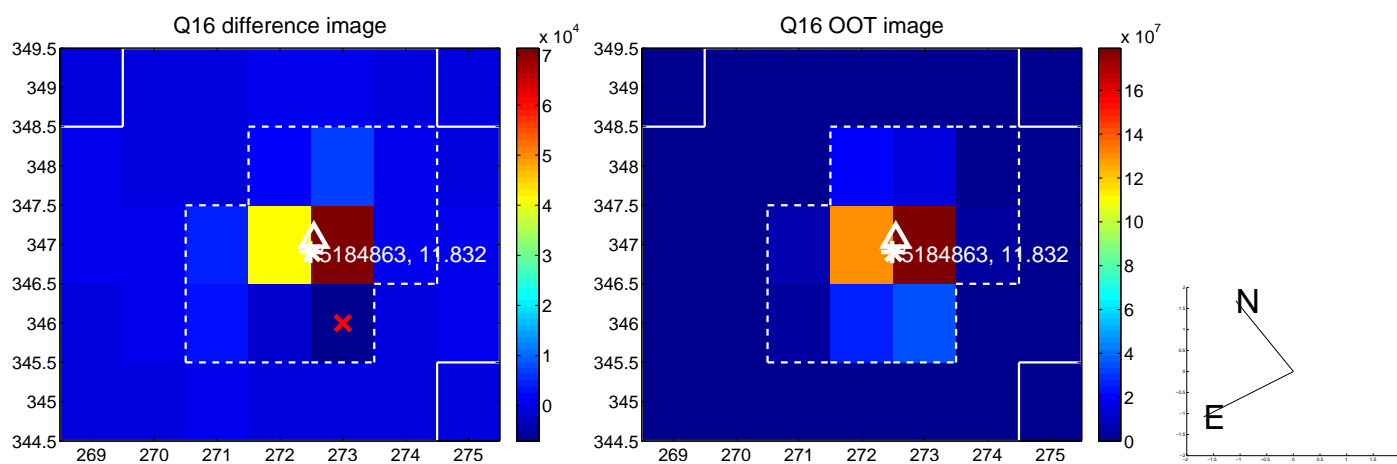
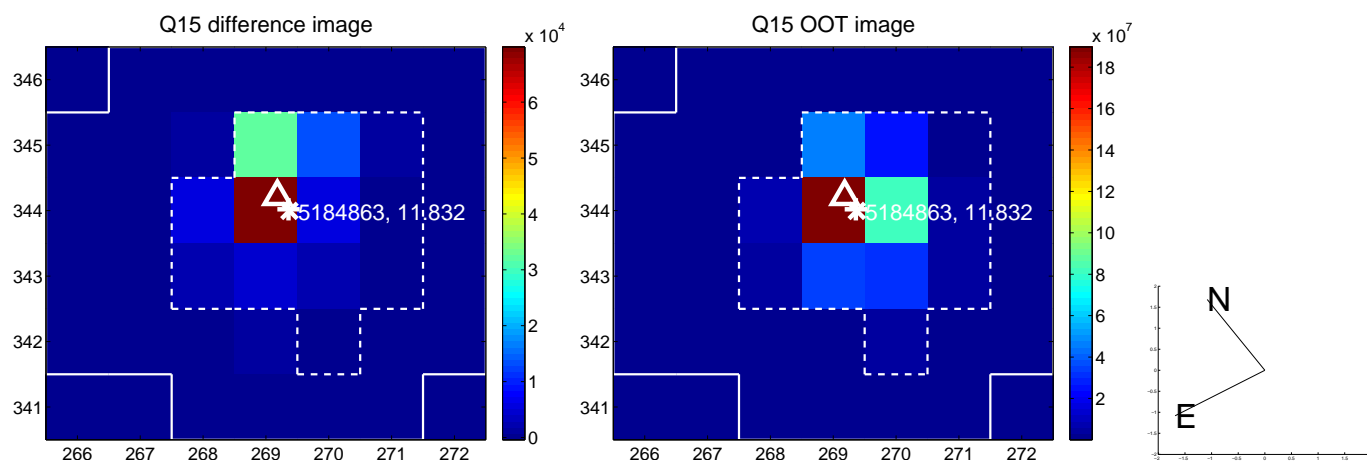
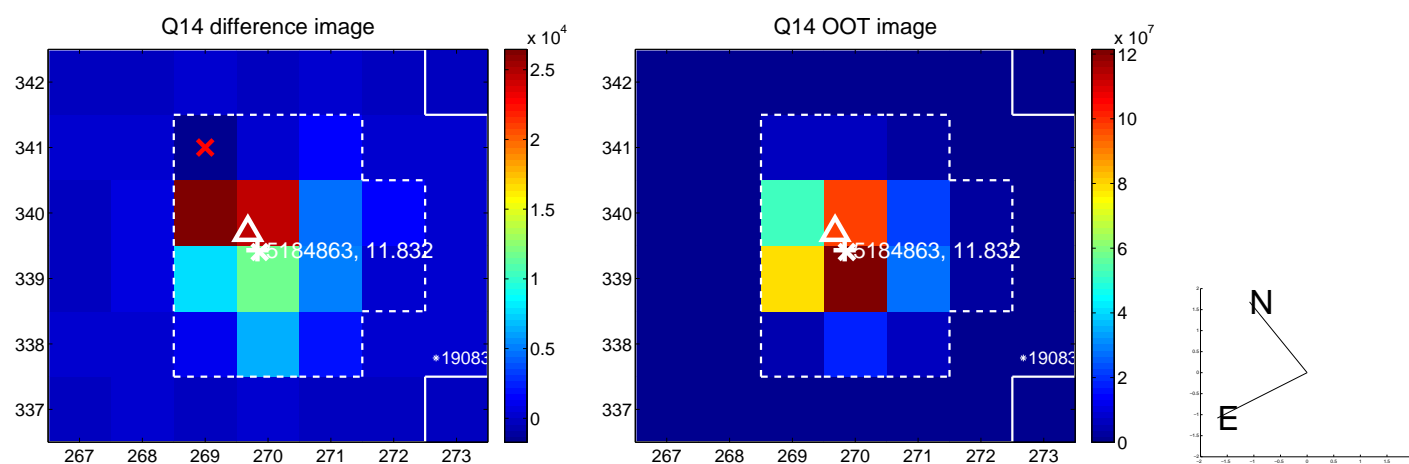
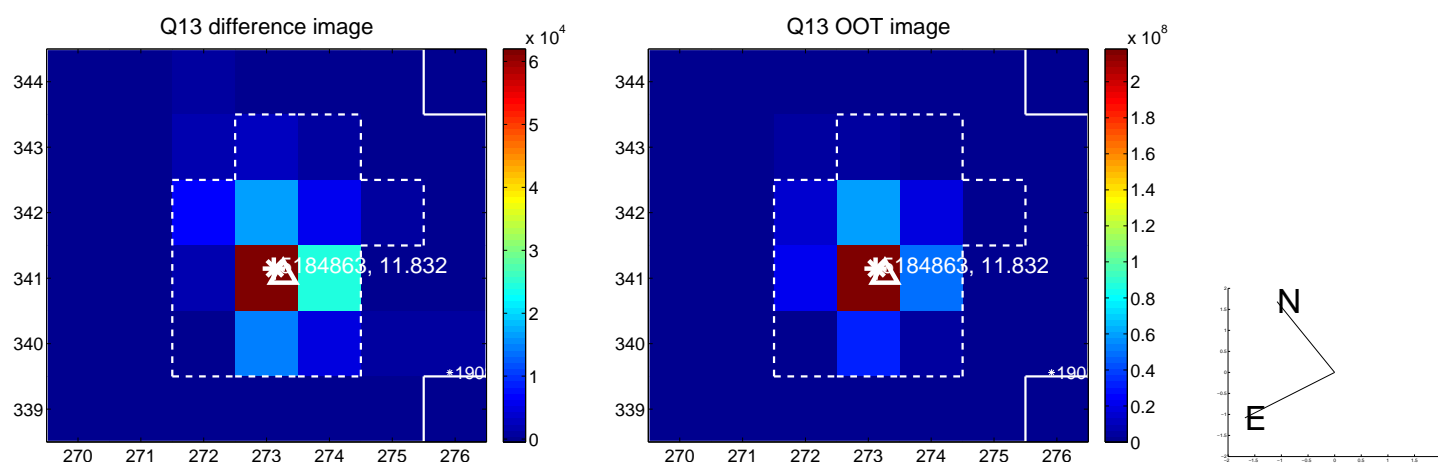




white  $\times$ : KIC target position;  $+$ : OOT centroid;  $\triangle$ : difference centroid. red  $\times$ : large negative pixel value.

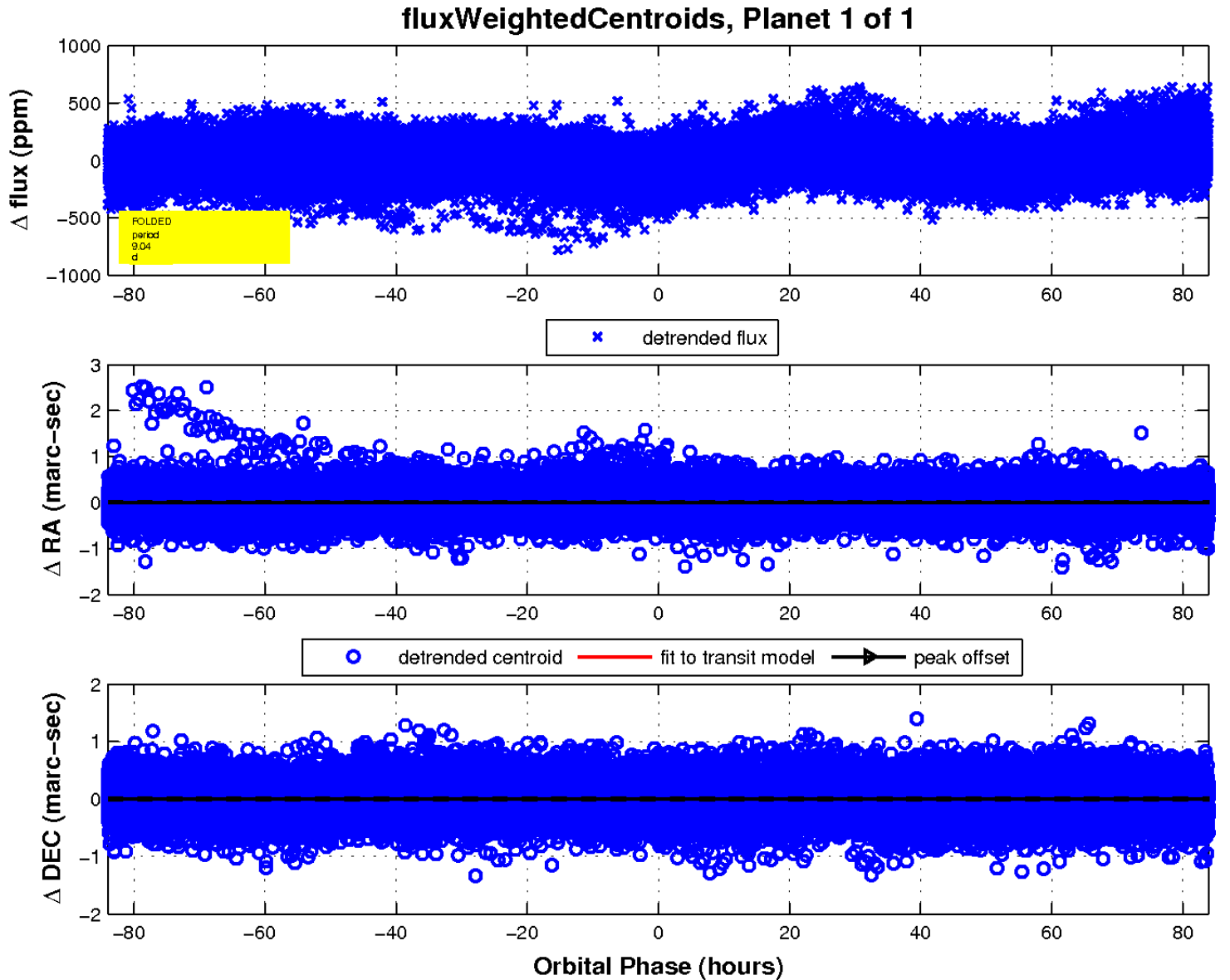
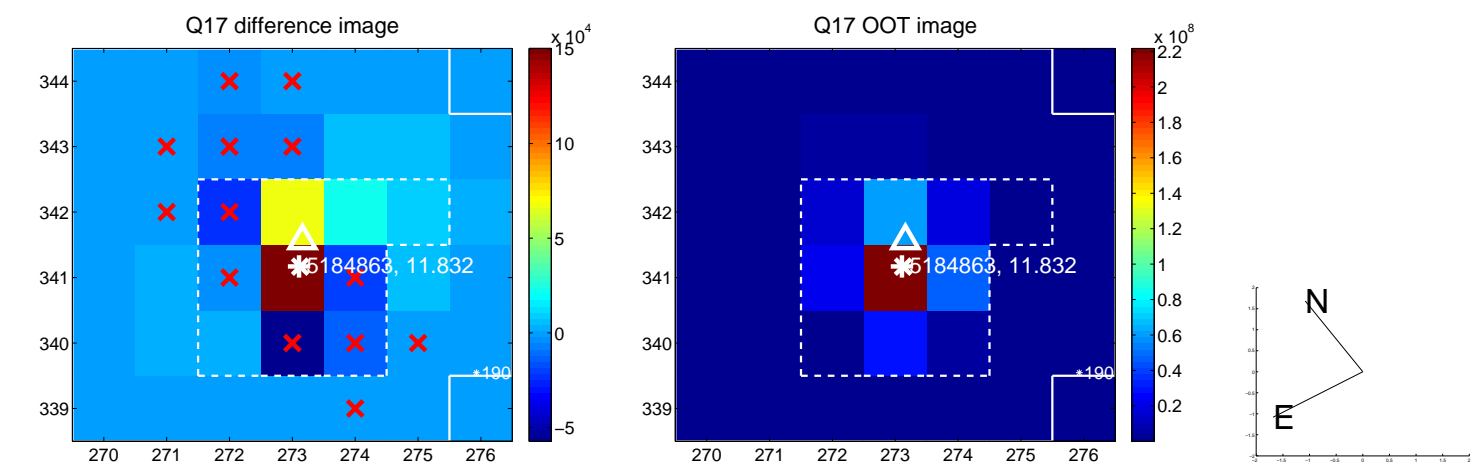


white  $\times$ : KIC target position;  $+$ : OOT centroid;  $\triangle$ : difference centroid. red  $\times$ : large negative pixel value.





white  $\times$ : KIC target position;  $+$ : OOT centroid;  $\triangle$ : difference centroid. red  $\times$ : large negative pixel value.



UKIRT Image

Declination

