

KIC 004774194

Q1-17 DR25 TCE Parameters

TCE	Run Type	KOI?	Period (Days)	Epoch (BKJD)	Depth (ppm)	Duration (Hours)	MES	SNR	R_{\star} (R_{\odot})	T_{\star} (K)	R_p (R_{\oplus})	S_p (S_{\oplus})
004774194-01	OBS	No	0.830386	132.118711	0.0	6.464	9.2	0.0	1.98	9888	0.01	64158.15

Robovetter Results

TCE	Run Type	Disp	Score	N	S	C	E	Comments
004774194-01	OBS	FP	0.00	1	0	0	0	LPP_DV—LPP_ALT—CENT_SATURATED

Notes: OBS = Observed. INJ = Injected. INV = Inverted. SCR = Scrambled.

N = Not Transit-Like. S = Stellar Eclipse. C = Centroid Offset. E = Ephemeris Match.

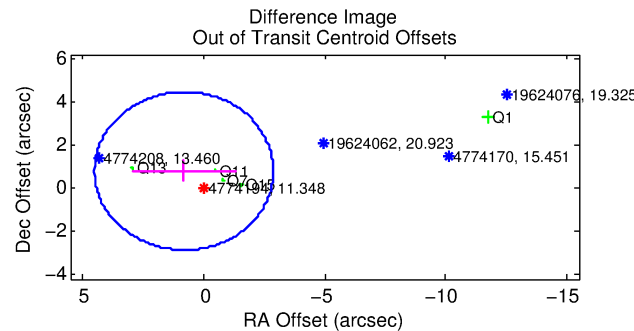
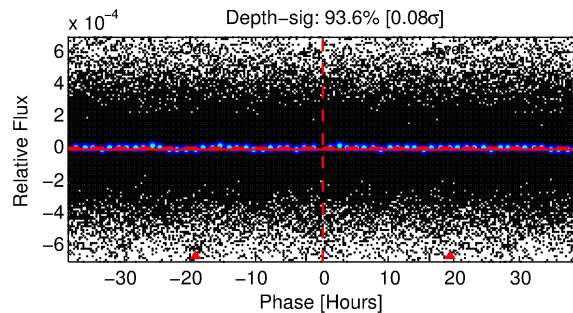
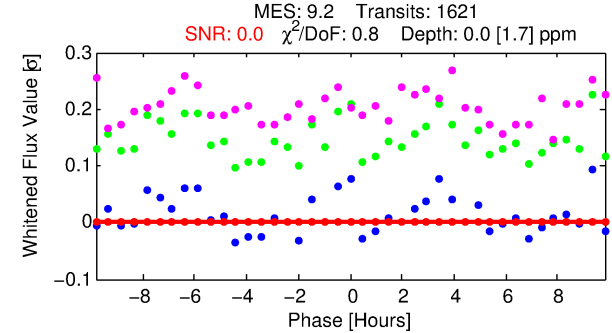
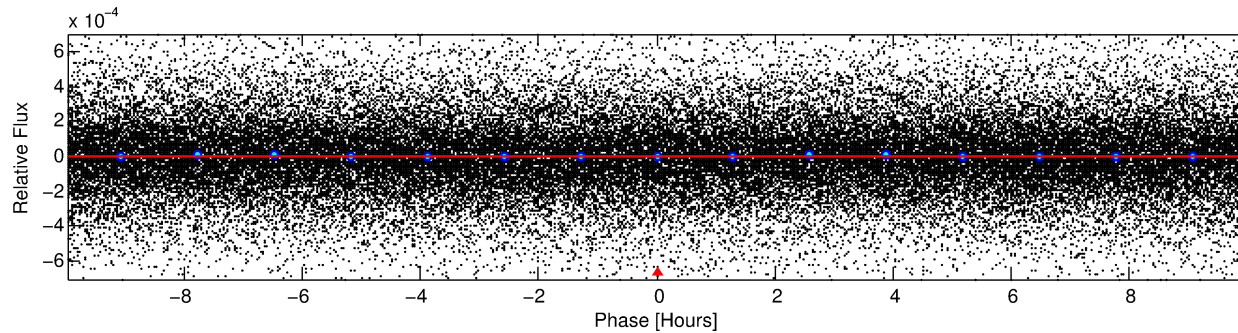
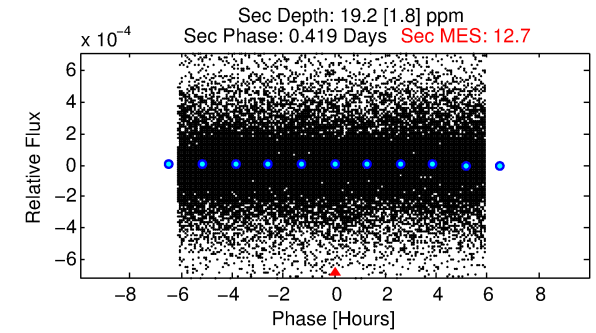
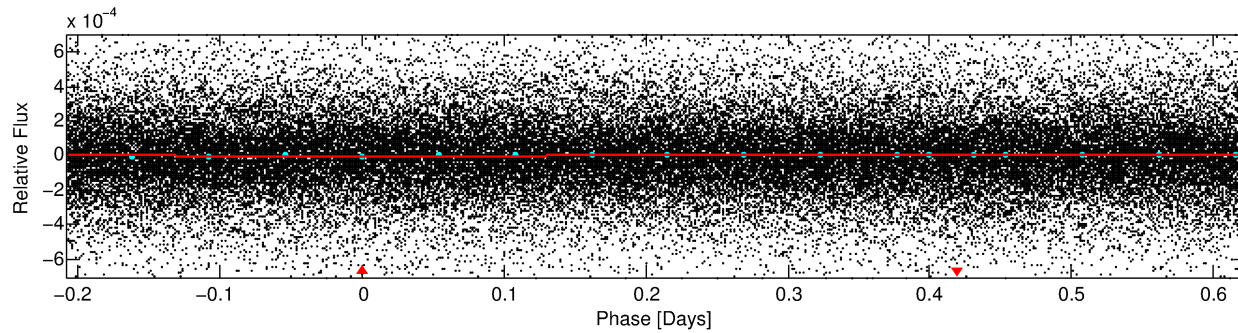
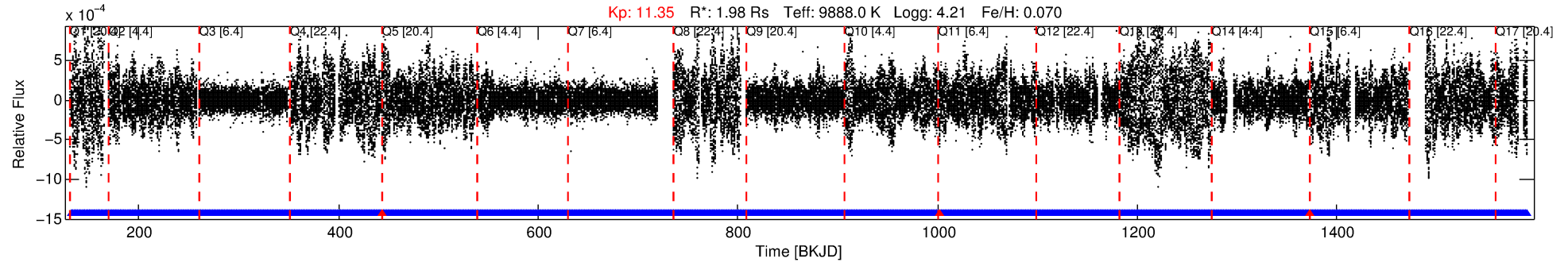
See http://exoplanetarchive.ipac.caltech.edu/docs/API_kepcandidate_columns.html#proj_disp_col for comment definitions.

Ephemeris Match Information For 004774194-01

No Significant Match Found

DV One-Page Summary

KIC: 4774194 Candidate: 1 of 1 Period: 0.830 d



DV Fit Results:

Period = 0.83039 [0.19184] d
Epoch = 132.1187 [36.6233] BKJD
Rp/R* = 0.0000 [0.0281]
a/R* = 1.07 [19.95]
b = 0.77 [102.45]
Seff = 64158.15 [39603.20]
Teff = 4058 [626] K
Rp = 0.01 [6.07] Re
a = 0.0229 [0.0092] AU
Ag = 124677.62 [227328394.73] [0.00]
Teffp = 117904 [53748543] K [0.00]

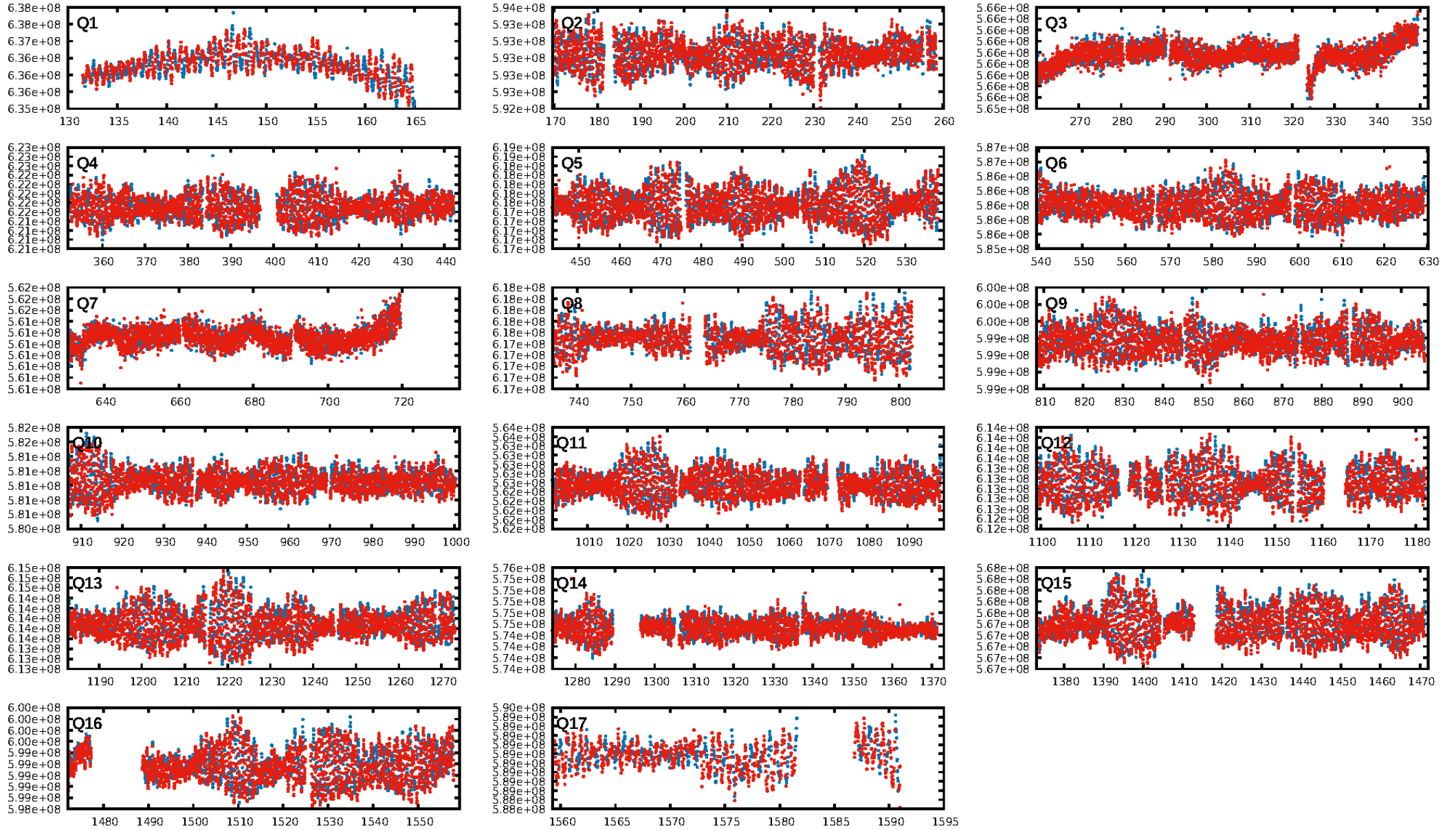
DV Diagnostic Results:

ShortPeriod-sig: N/A
LongPeriod-sig: N/A
ModelChiSquare2-sig: N/A
ModelChiSquareGof-sig: N/A
Bootstrap-pfa: N/A
RollingBand-fgt: 1.00 [1545/1548]
GhostDiagnostic-chr: N/A
Centroid-sig: N/A
Centroid-so: N/A
OotOffset-rm: 1.134 arcsec [0.92 sigma]
KicOffset-rm: 1.254 arcsec [0.65 sigma]
OotOffset-st: 0/3/0/2 [5]
KicOffset-st: 0/3/0/2 [5]
DiffImageQuality-fgm: 0.00 [0/5]
DiffImageOverlap-fno: 1.00 [17/17]

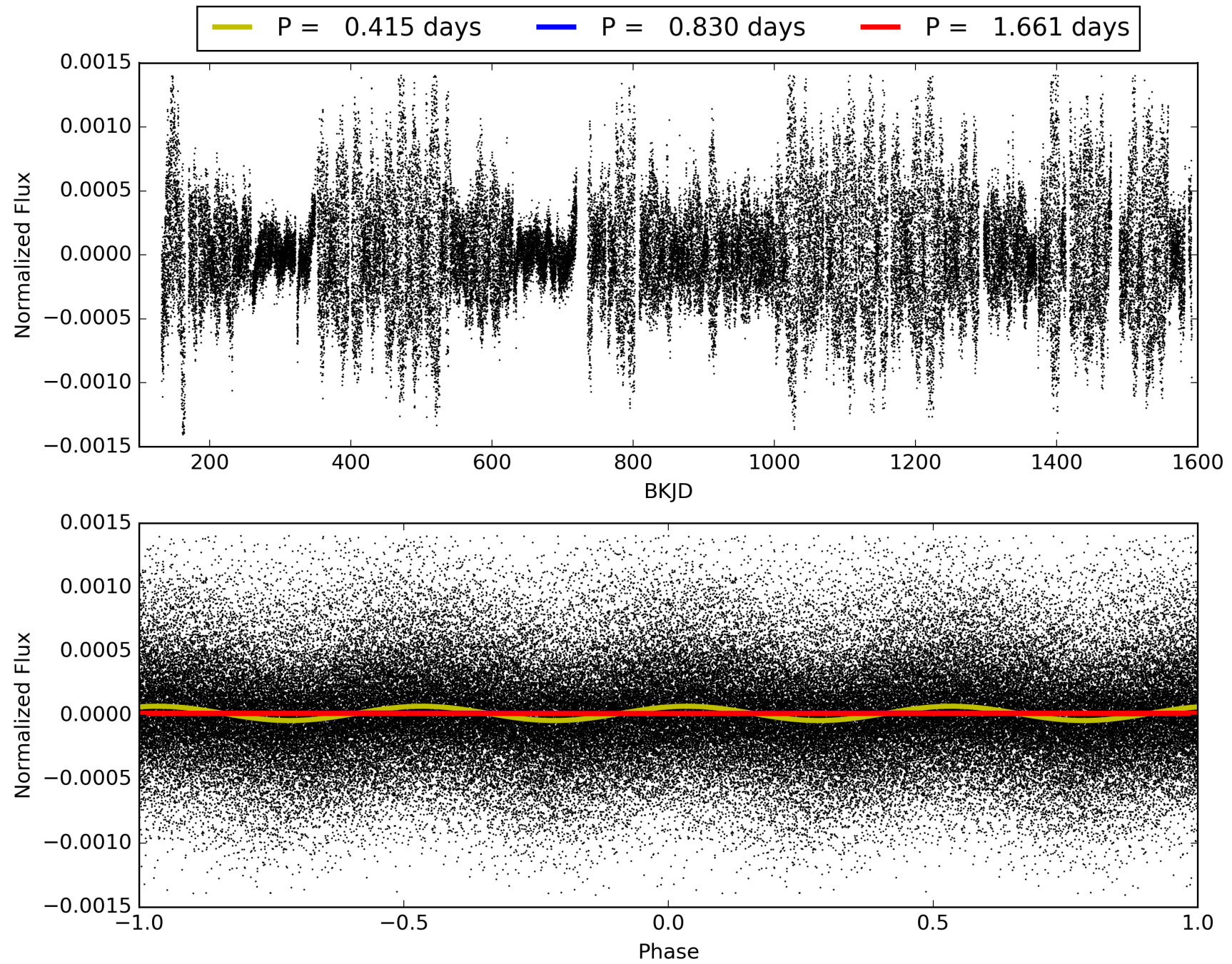
Software Revision: svn+ssh://murzim/repo/soc/tags/release/9.3.42@60958 -- Date Generated: 29-Jan-2016 10:31:16 Z

This Data Validation Report Summary was produced in the Kepler Science Operations Center Pipeline at NASA Ames Research Center

TCE 004774194-01, PDC Light Curves

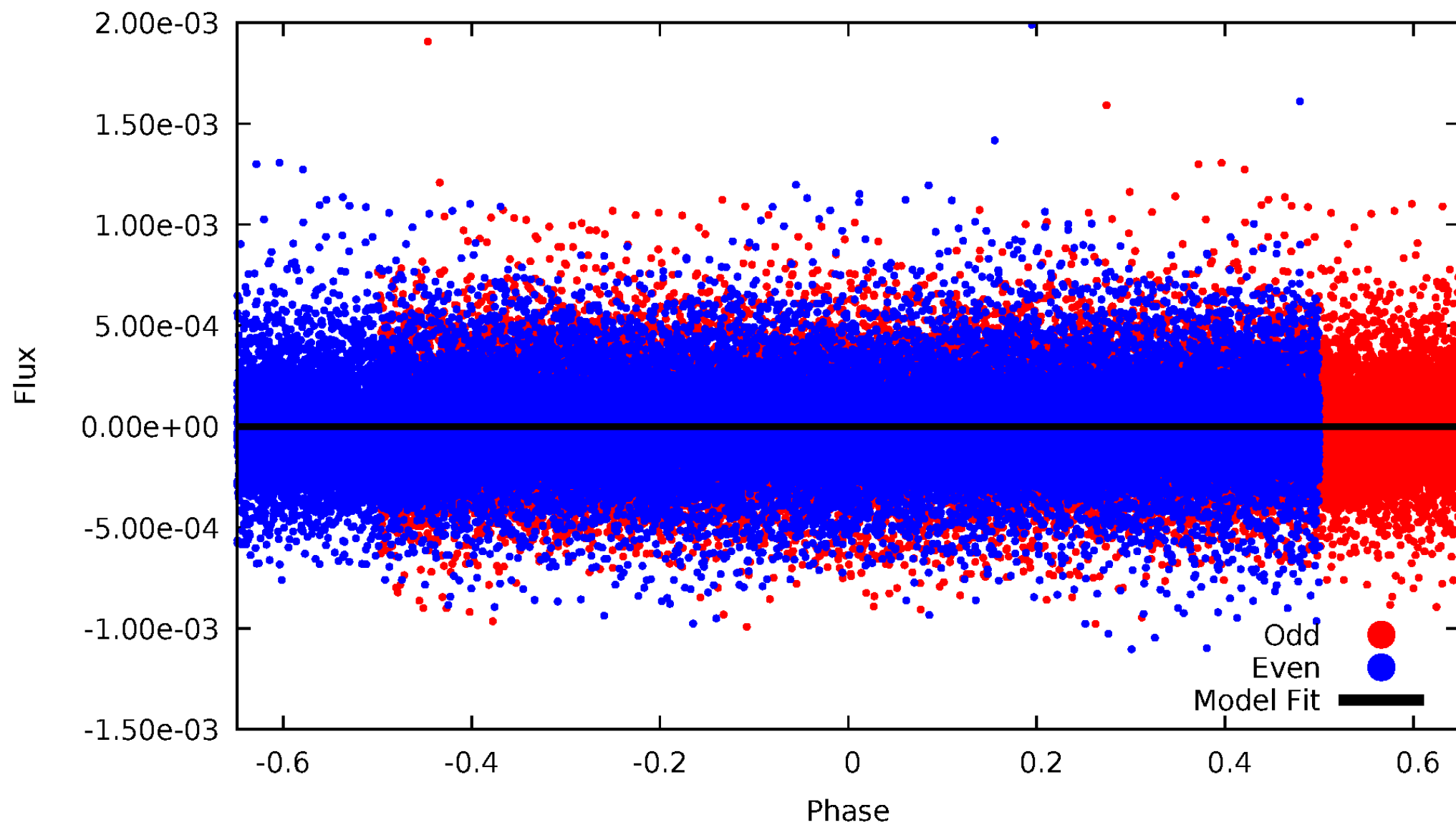


TCE 004774194-01



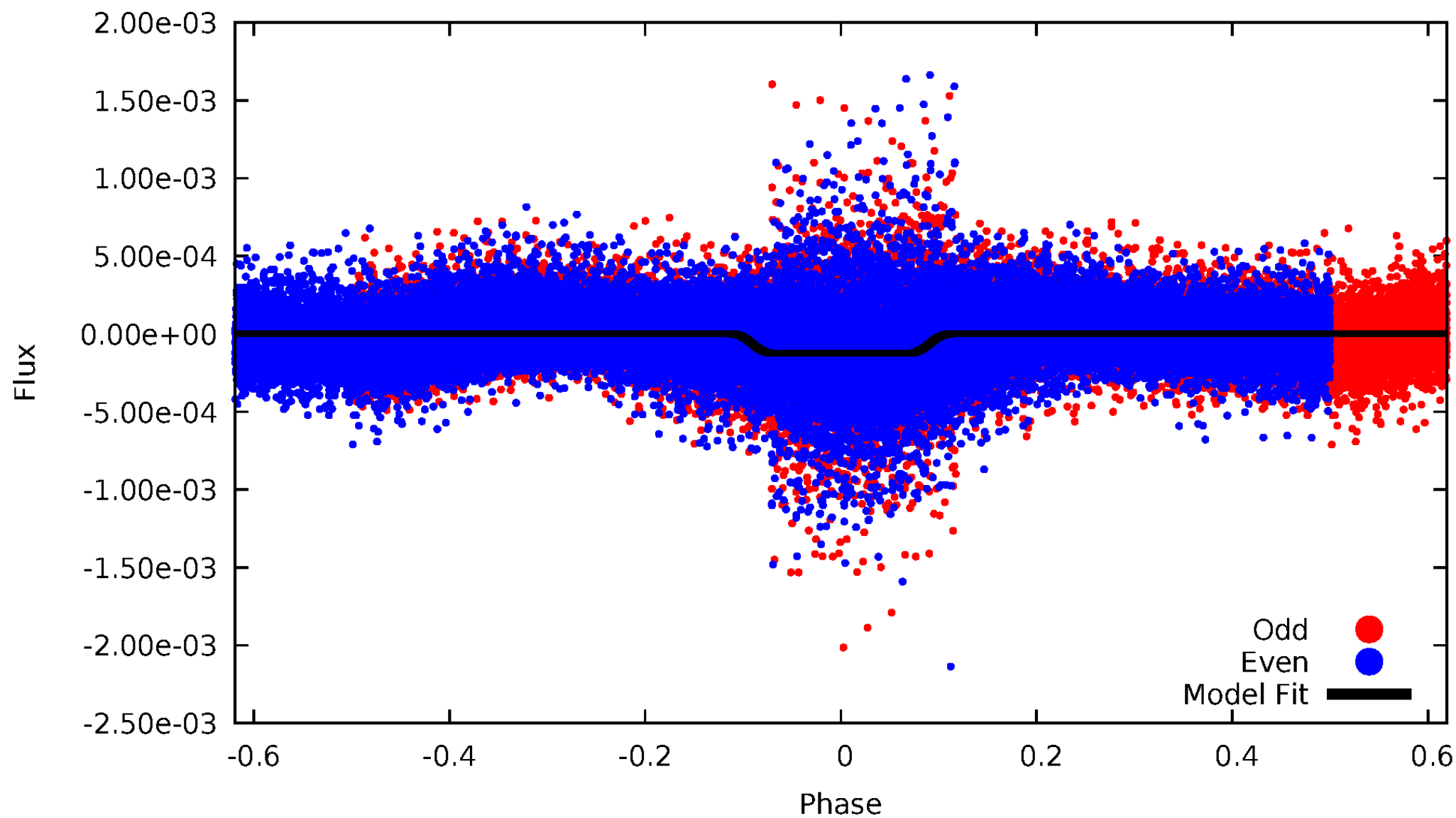
DV Odd/Even

TCE 004774194-01



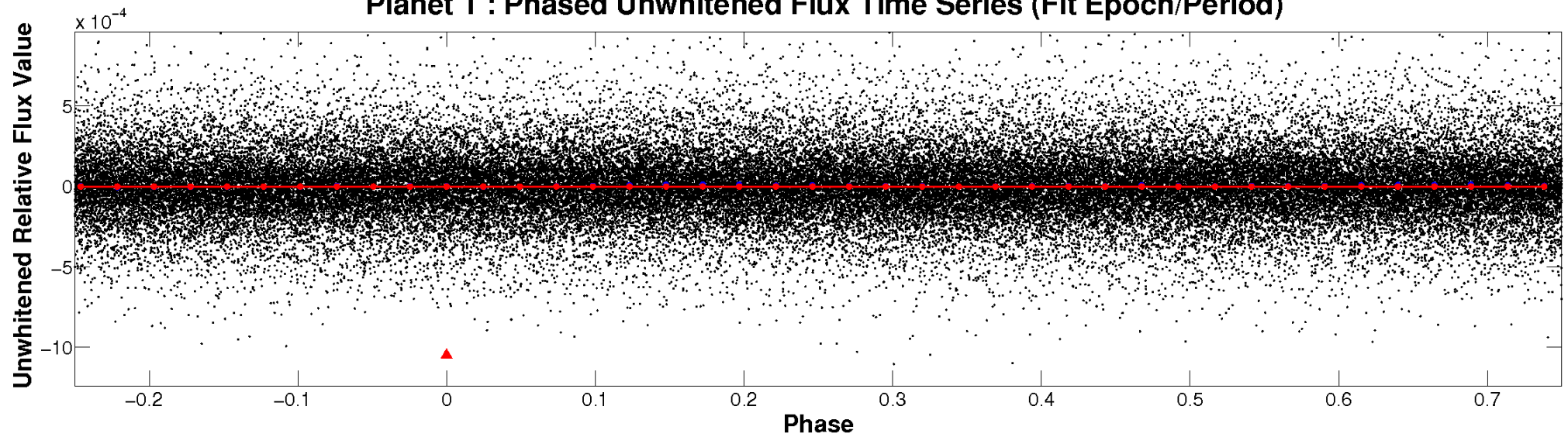
ALT Odd/Even

TCE 004774194-01

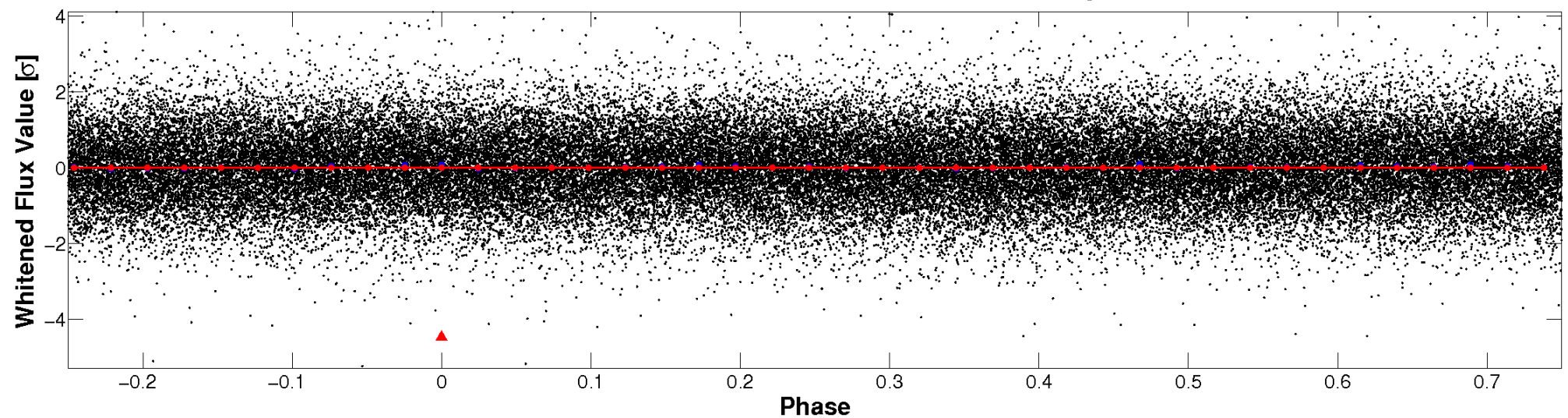


Non-Whitened Vs. Whitened Light Curve

Planet 1 : Phased Unwhitened Flux Time Series (Fit Epoch/Period)

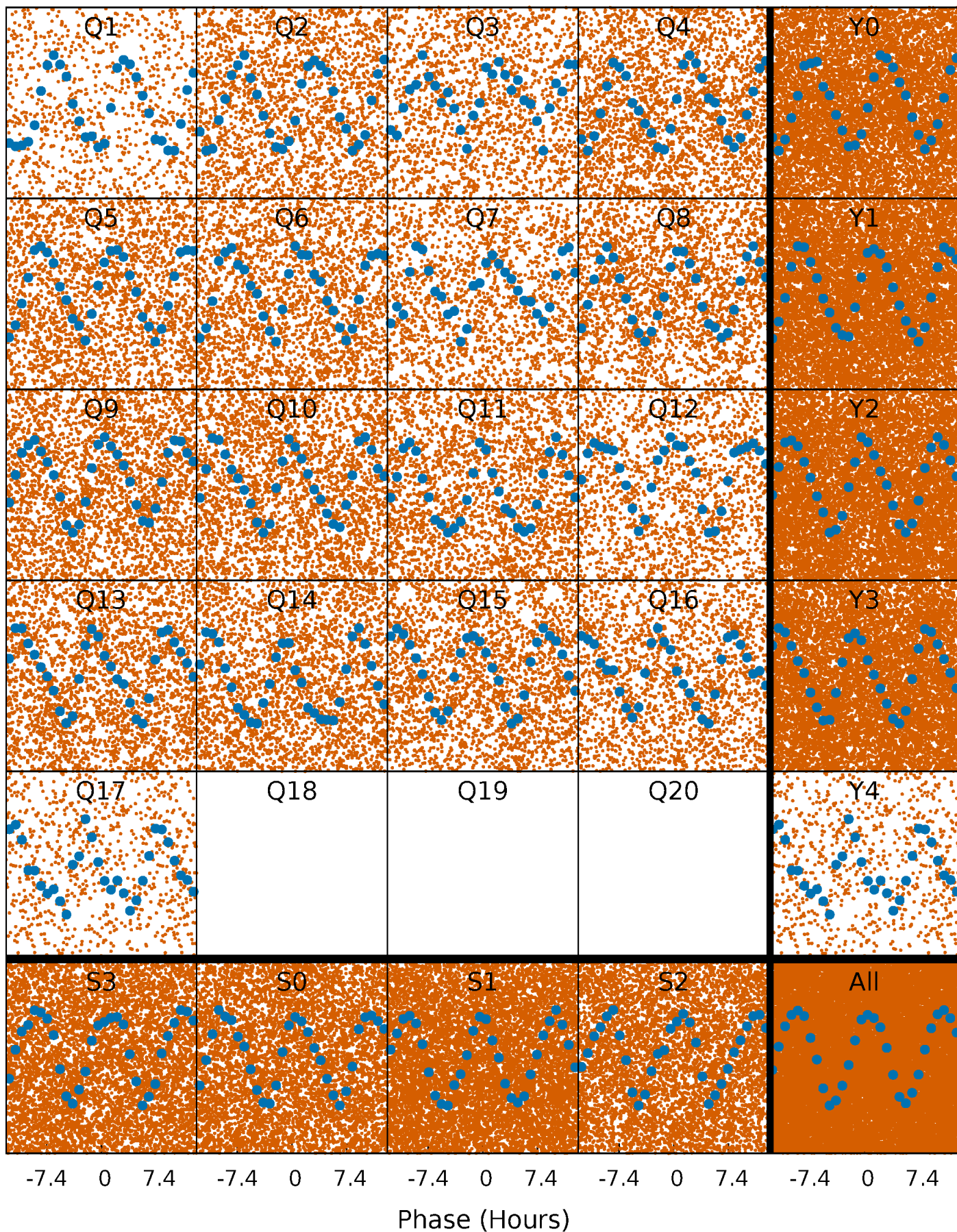


Planet 1 : Phased Whitened Flux Time Series (Fit Epoch/Period)



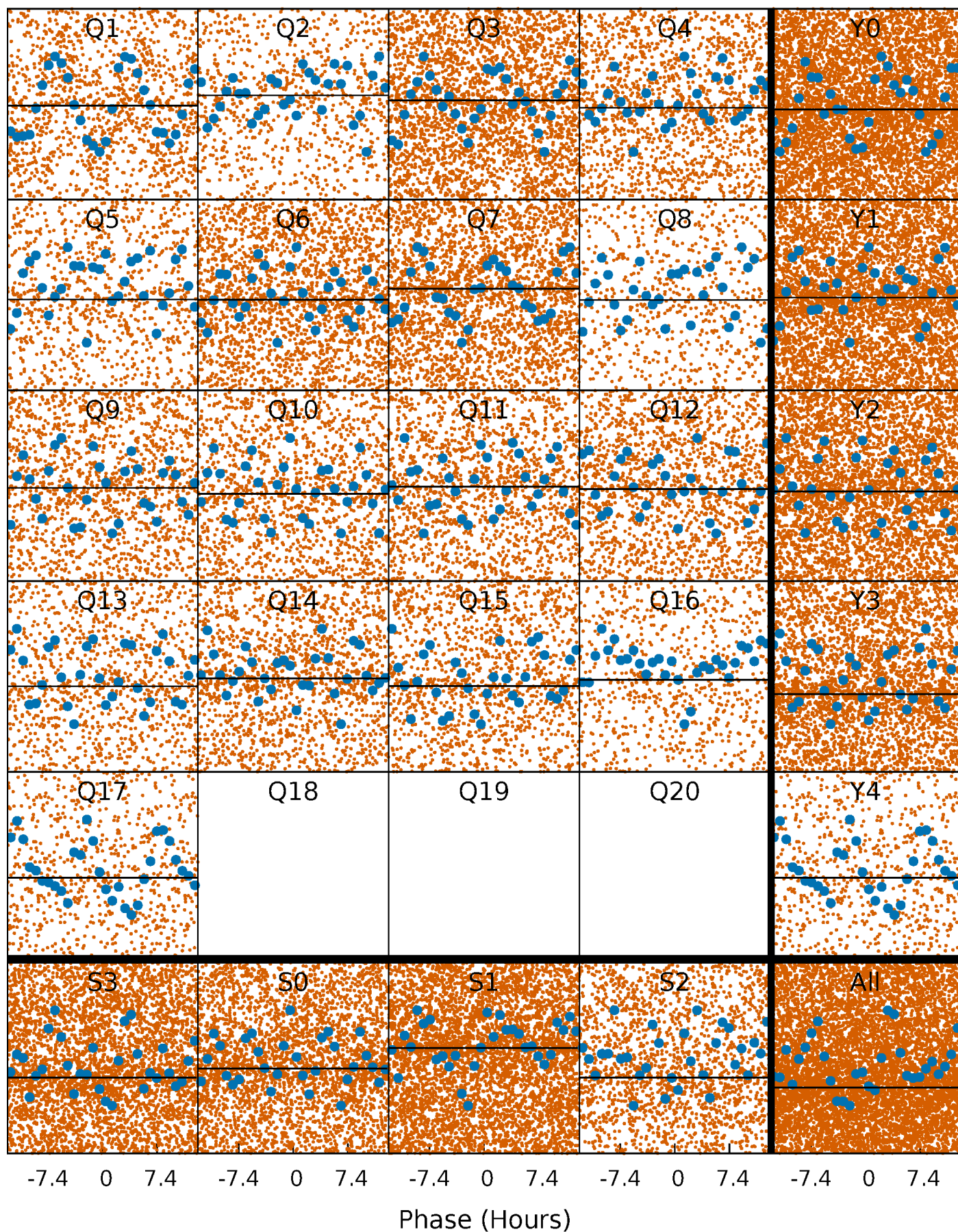
PDC Quarter-Phased Transit Curves

TCE 004774194-01 P= 0.830386 Days $T_0=132.118711$ (BKJD)



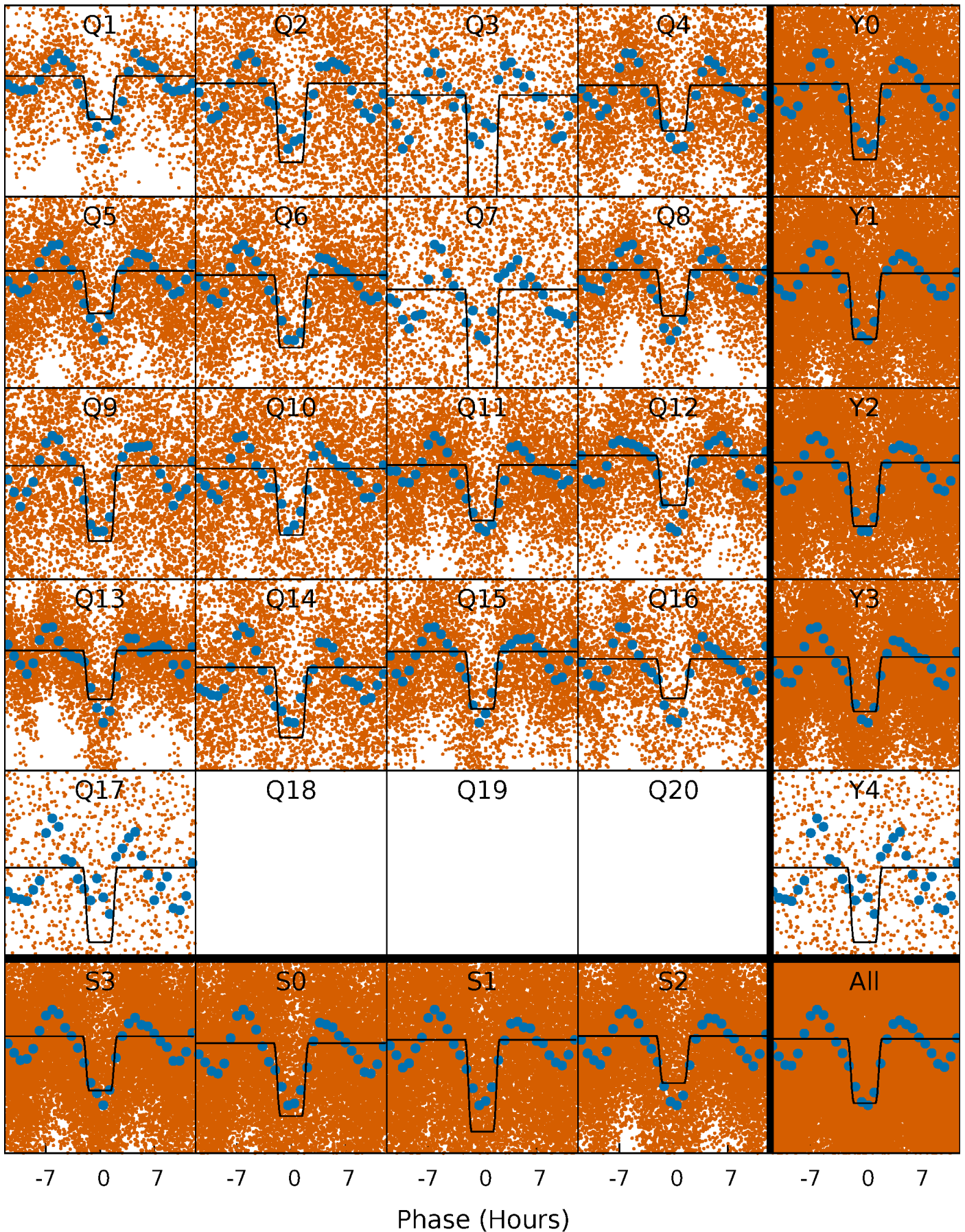
DV Quarter-Phased Transit Curves

TCE 004774194-01 P= 0.830386 Days $T_0=132.118711$ (BKJD)



Alt. Detrend Quarter-Phased Transit Curves

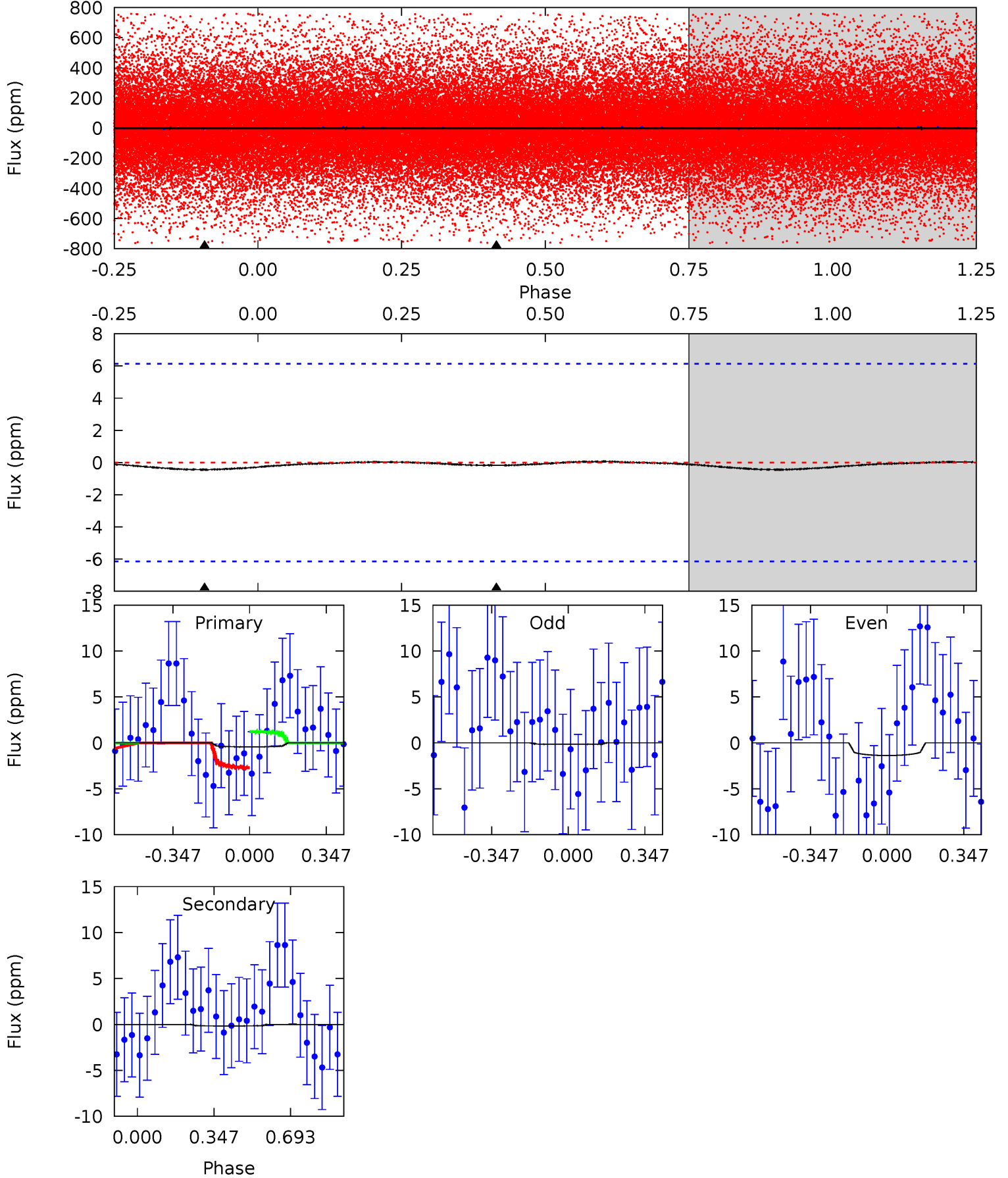
TCE 004774194-01 P= 0.830276 Days $T_0=132.064857$ (BKJD)



DV Model-Shift Uniqueness Test

004774194-01, P = 0.830386 Days, E = 131.288325 Days

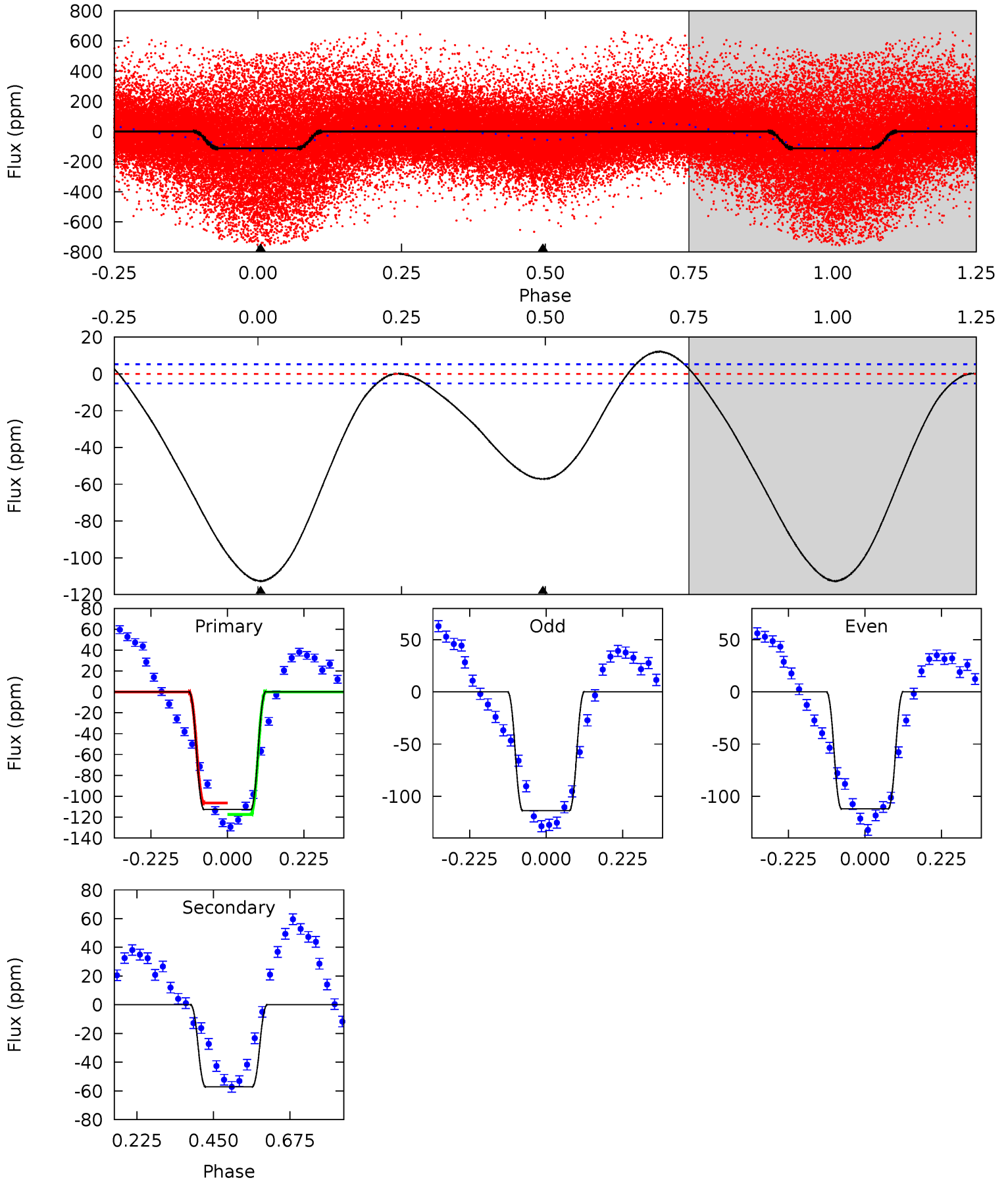
Pri	Sec	Ter	Pos	FA ₁	FA ₂	F _{Red}	Pri-Ter	Pri-Pos	Sec-Ter	Sec-Pos	Odd-Evn	DMM	Shape	TAT
0.31	0.12	0	0	4.30	0.94	0.01	0.31	0.31	0.12	0.12	0.43	0.58	0.13	0.52



Alt Model-Shift Uniqueness Test

004774194-01, P = 0.830276 Days, E = 131.234581 Days

Pri	Sec	Ter	Pos	FA ₁	FA ₂	F _{Red}	Pri-Ter	Pri-Pos	Sec-Ter	Sec-Pos	Odd-Evn	DMM	Shape	TAT
94.9	48.1	0	0	4.39	1.21	3.80	94.9	94.9	48.1	48.1	0.69	1.12	0.10	4.65



Stellar Parameters For KIC 004774194

	$T_{\text{eff}}(K)$	$\log(g)$	[Fe/H]	$R (R_{\odot})$	$M(M_{\odot})$	$p_{\star} (\text{g}\cdot\text{cm}^{-3})$
	9888^{+308}_{-411}	$4.209^{+0.140}_{-0.260}$	$0.070^{+0.150}_{-0.550}$	$1.979^{+0.935}_{-0.503}$	$2.314^{+0.429}_{-0.525}$	$0.421^{+0.363}_{-0.251}$
	+3%/-4%	+3%/-6%	+214%/-786%	+47%/-25%	+19%/-23%	+86%/-60%
Source	KIC0	KIC0	KIC0	DSEP		

KIC = Kepler Input Catalog; PHO = Photometry; SPE = Spectroscopy; AST = Asteroseismology
 TRA = Transits; DESP = Dartmouth Models; MULT = Multiple Models

Secondary Eclipse Parameters for KIC 004774194-01 / KOI

Detrend	Depth (ppm)	$R_p (R_{\oplus})$	$T_{max} (K)$	$T_{obs} (K)$	A_{obs}
DV	-0 ± 1	$4.09^{+4.93}_{-2.92}$	5818^{+849}_{-608}	-4571^{+509}_{-670}	$0.001^{+0.055}_{-0.038}$
Alt.	-57 ± 1	$5.15^{+5.45}_{-3.58}$	5827^{+856}_{-626}	4402^{+6156}_{-8487}	$0.562^{+6.256}_{-0.423}$

T_{max} = Theoretical Maximum Planetary Temperature

T_{obs} = Observed Planetary Temperature (Assuming $A=0.3$)

A_{obs} = Observed Albedo (Assuming $T=0$)

If a secondary eclipse is present, the system is likely an EB if $T_{obs} \gg T_{max}$ AND $A_{obs} \gg 1.0$

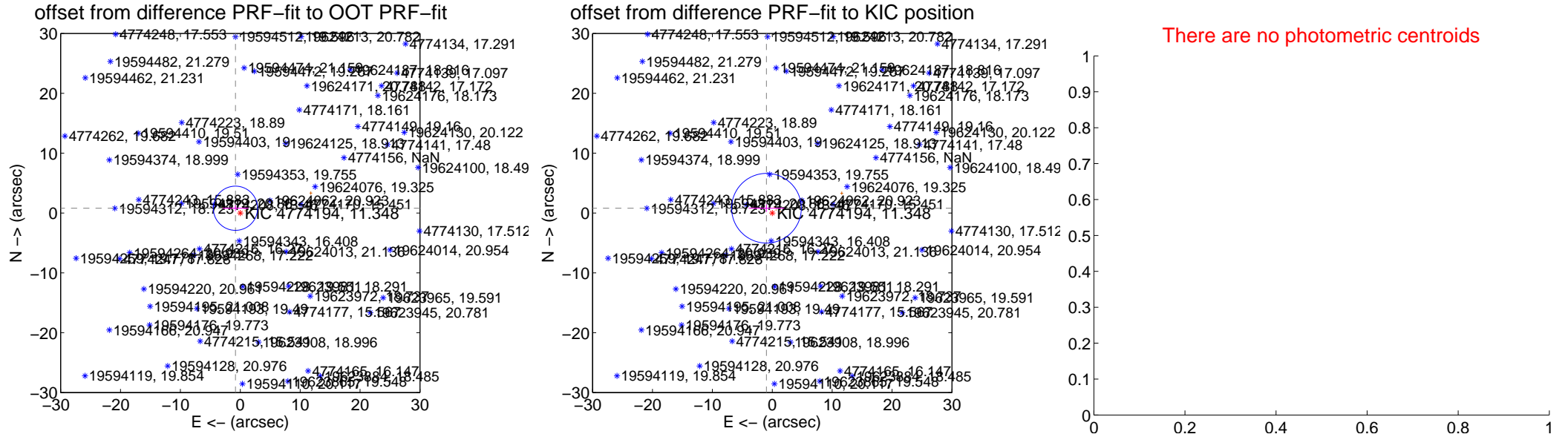
DV Centroid Data

Supplemental centroid analysis for 004774194-01. **Kepler magnitude: 11.35.** Transit SNR 0.00

There are 0 quarters with good PRF difference image offsets

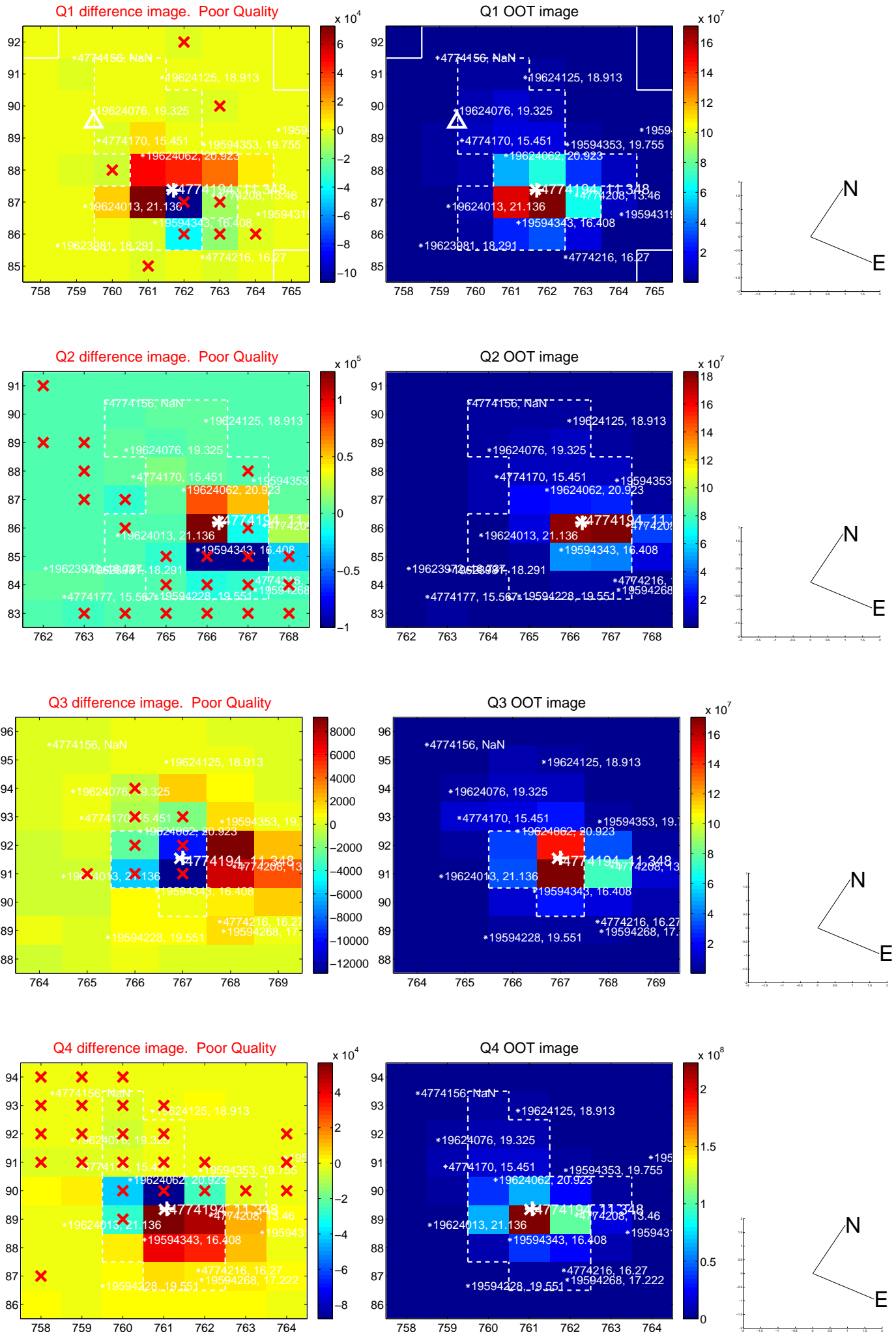
The direct PRF centroid is offset from the target star catalog position by about 0.25 arcsec

	Distance in arcsec	Distance / σ	Δ RA	Δ Dec
PRF-fit source offset from OOT	1.134 ± 1.231	0.92	0.807 ± 2.128	0.796 ± 0.485
PRF-fit source offset from KIC position	1.254 ± 1.940	0.65	0.967 ± 2.964	0.800 ± 0.617
photometric centroid source offset	—	—	—	—

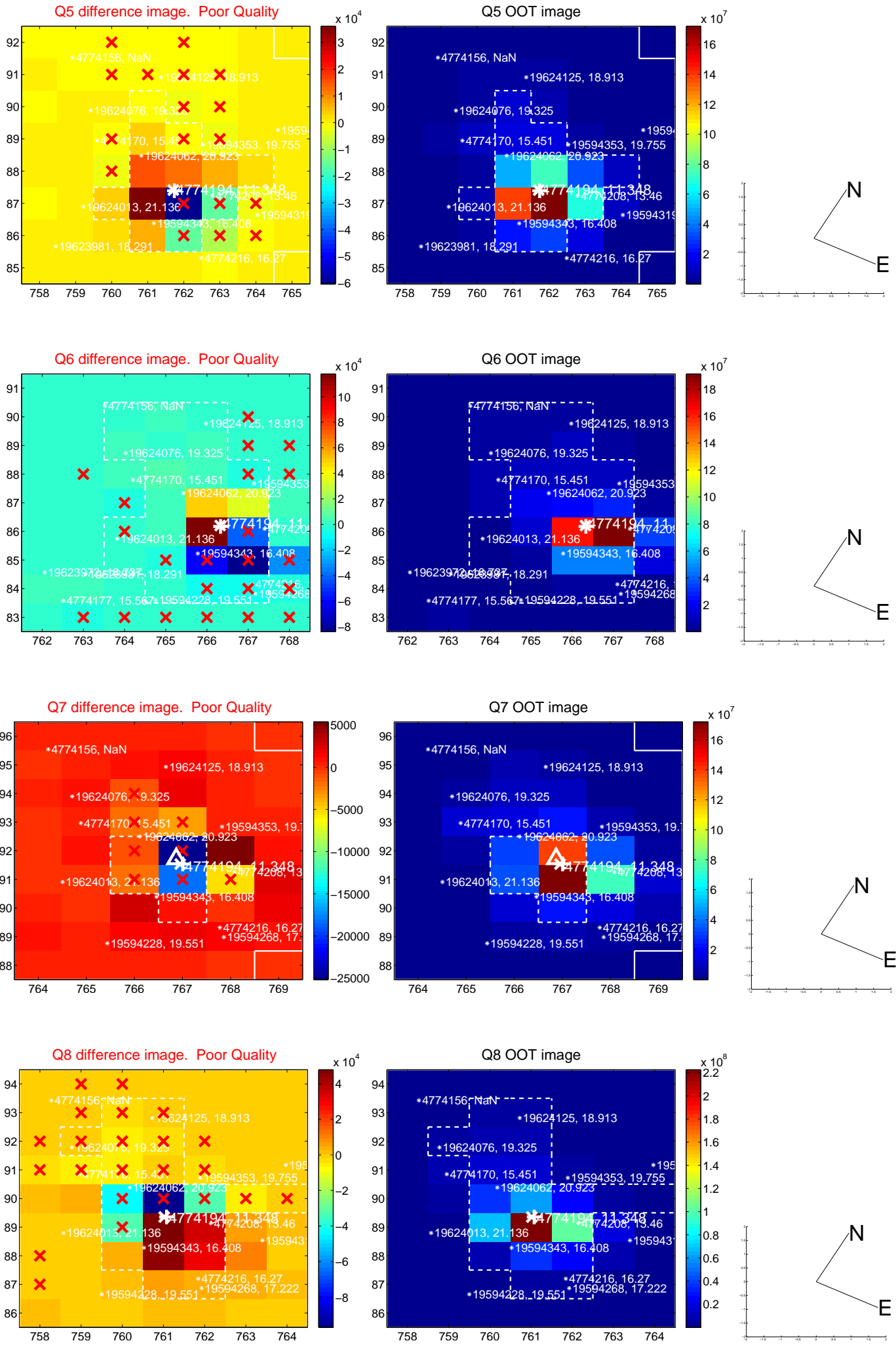


Centroid source offsets from the target star reconstructed from PRF and photometric centroids. **Sky blue crosses: good quarterly centroid offsets; Vermillion crosses: bad quarterly centroid offsets;** magenta cross: average over quarters. Length of the crosses: one- σ uncertainty. Blue circle: three- σ . Red *: target star. Blue *: Other stars. Text next to a star gives its KIC ID and kepmag. KIC IDs > 15,000,000 are from the UKIRT catalog.

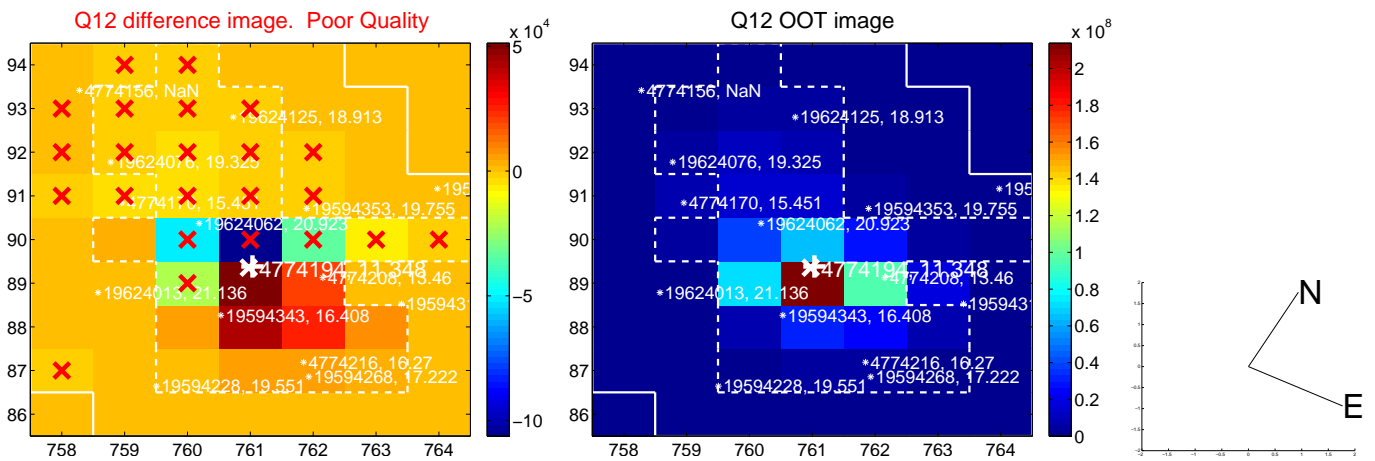
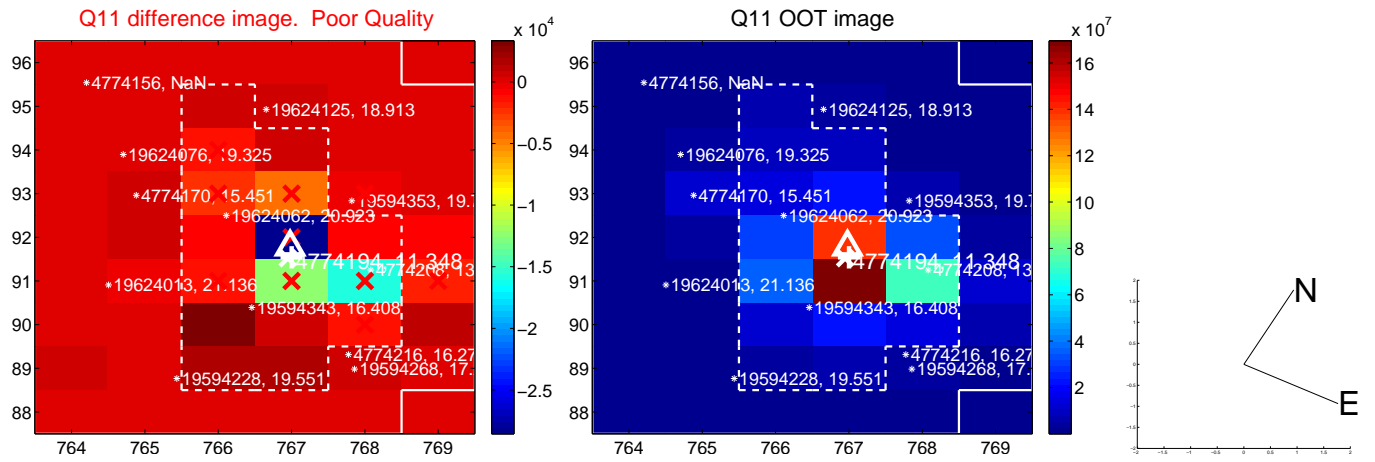
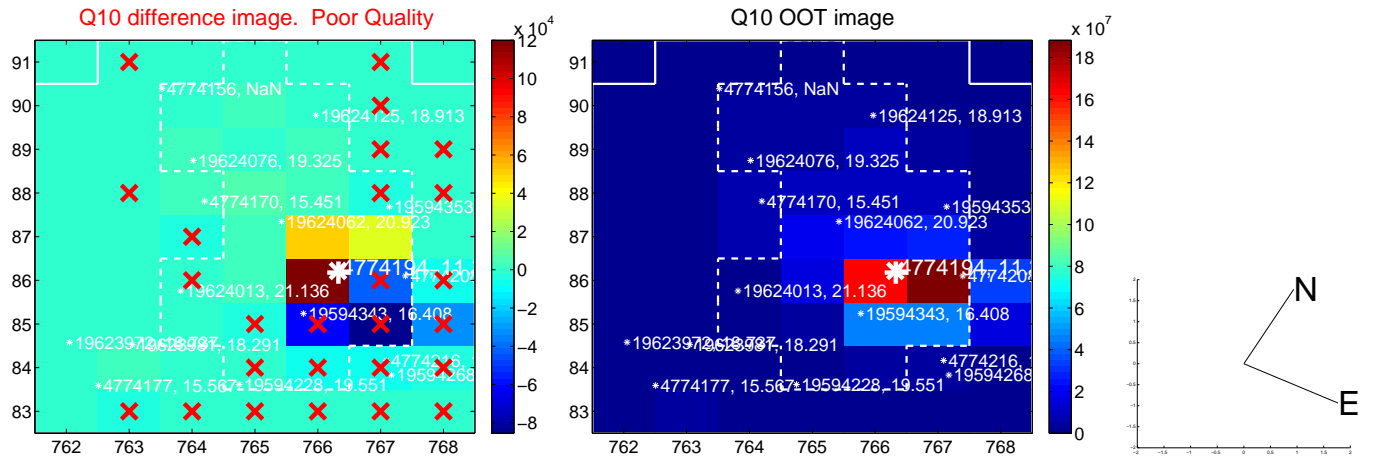
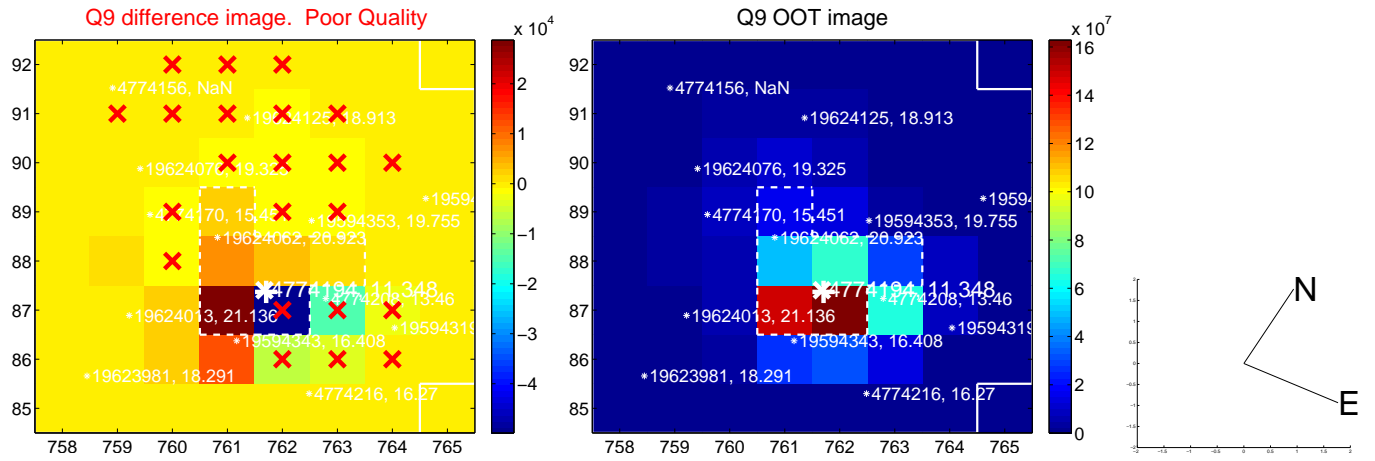
white \times : KIC target position; +: OOT centroid; \triangle : difference centroid. red \times : large negative pixel value.



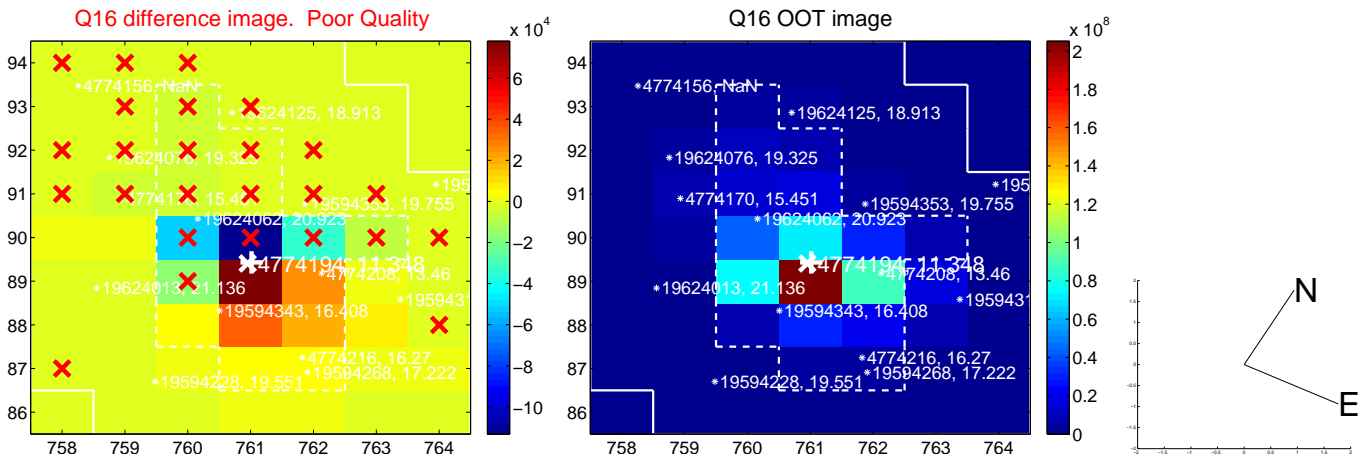
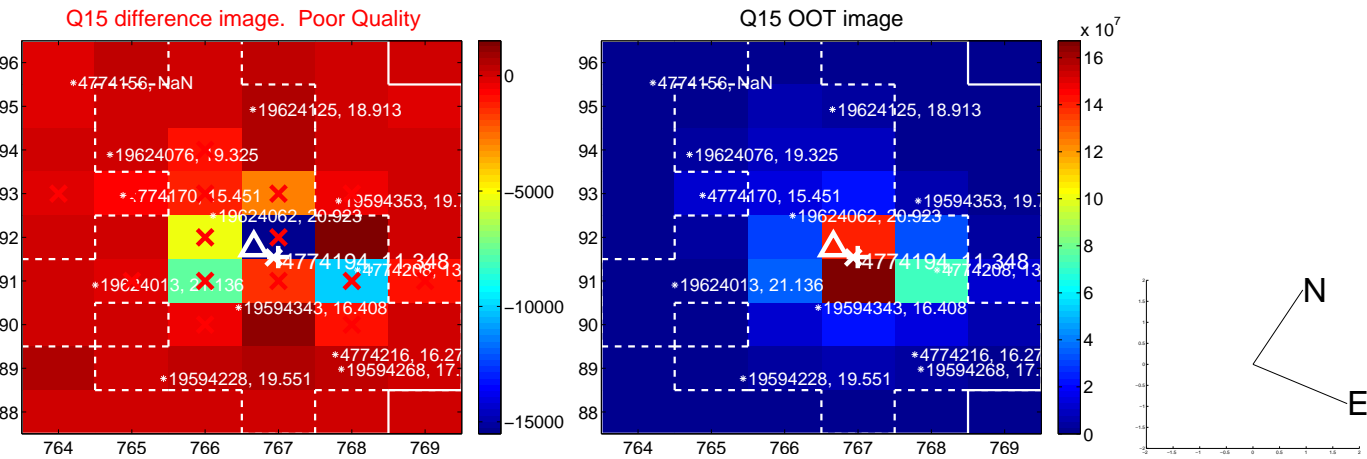
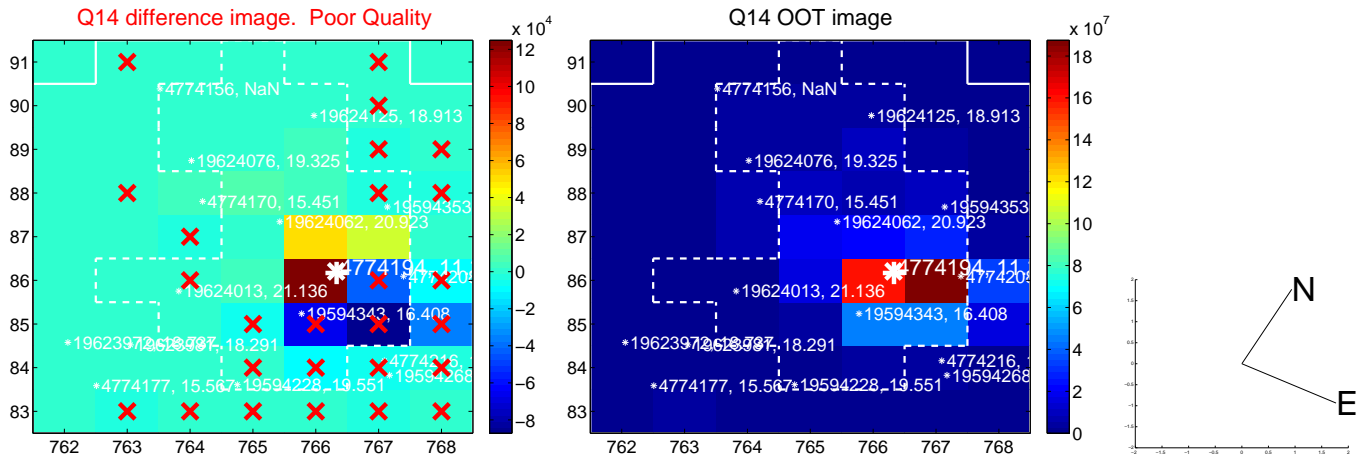
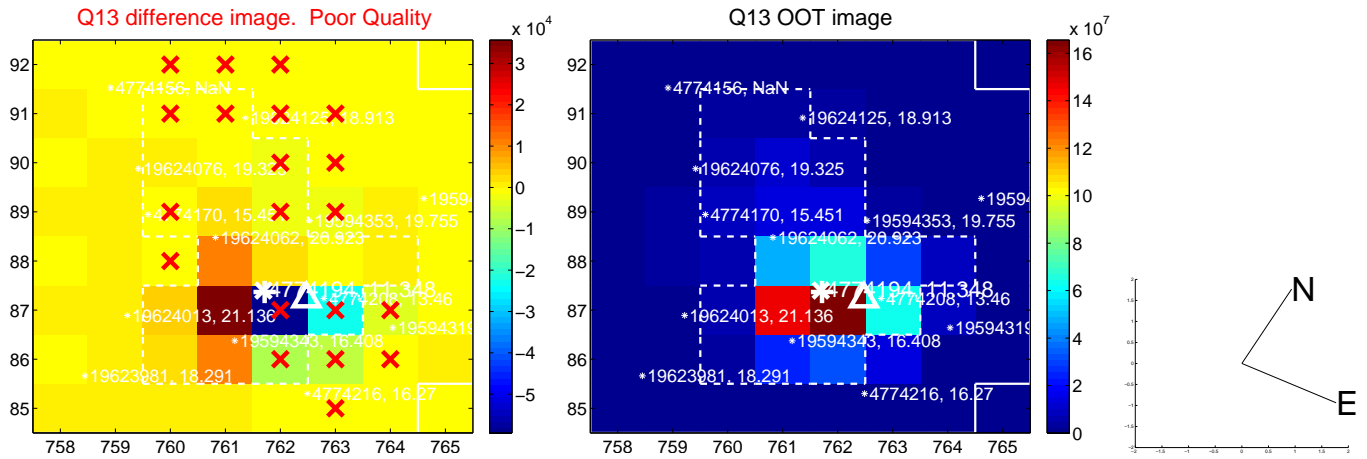
white \times : KIC target position; +: OOT centroid; \triangle : difference centroid. red \times : large negative pixel value.



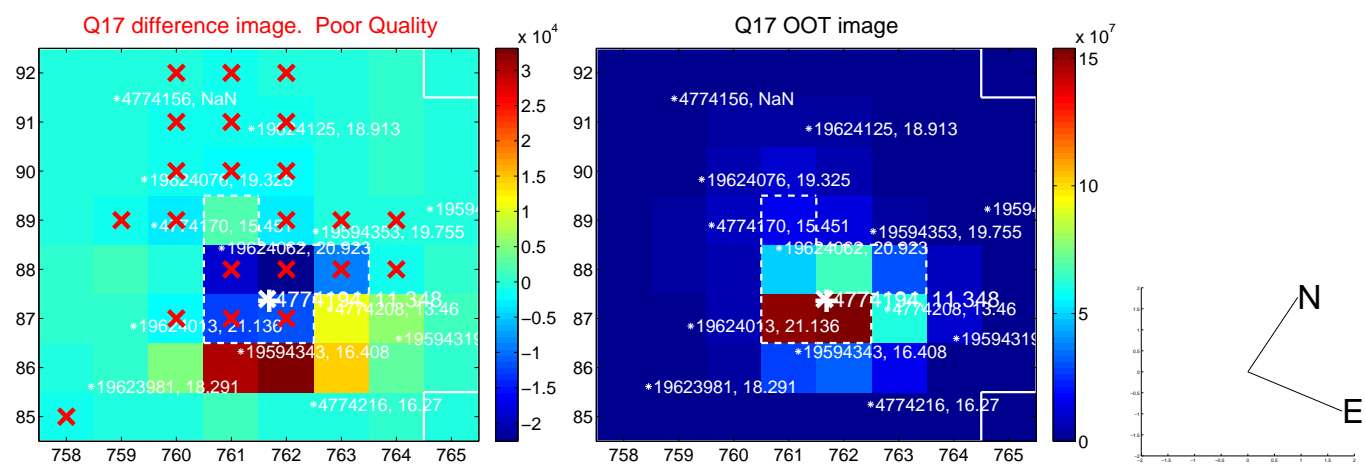
white \times : KIC target position; +: OOT centroid; \triangle : difference centroid. red \times : large negative pixel value.



white \times : KIC target position; +: OOT centroid; \triangle : difference centroid. red \times : large negative pixel value.



white \times : KIC target position; $+$: OOT centroid; \triangle : difference centroid. red \times : large negative pixel value.



folded centroid time series figure for this object.

UKIRT Image

Declination

