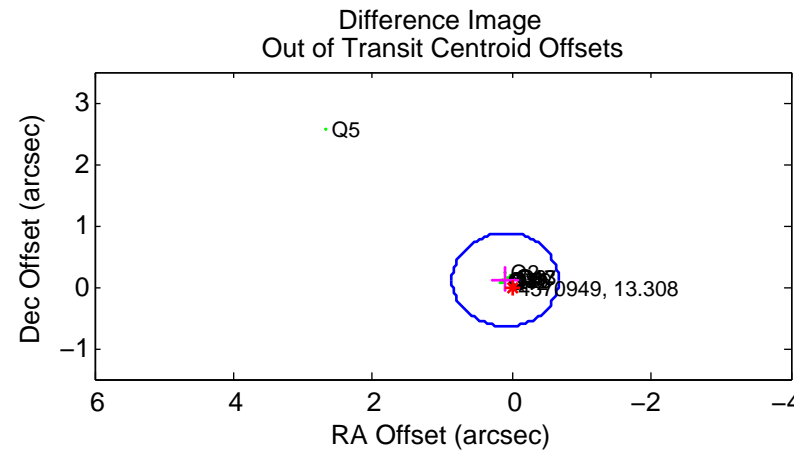
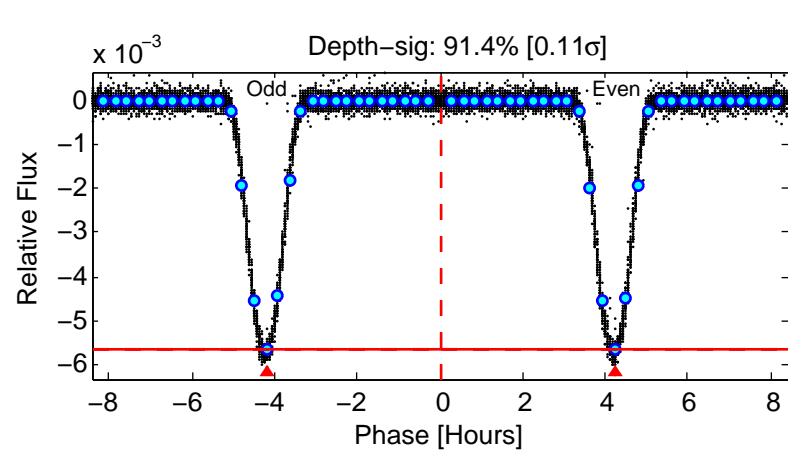
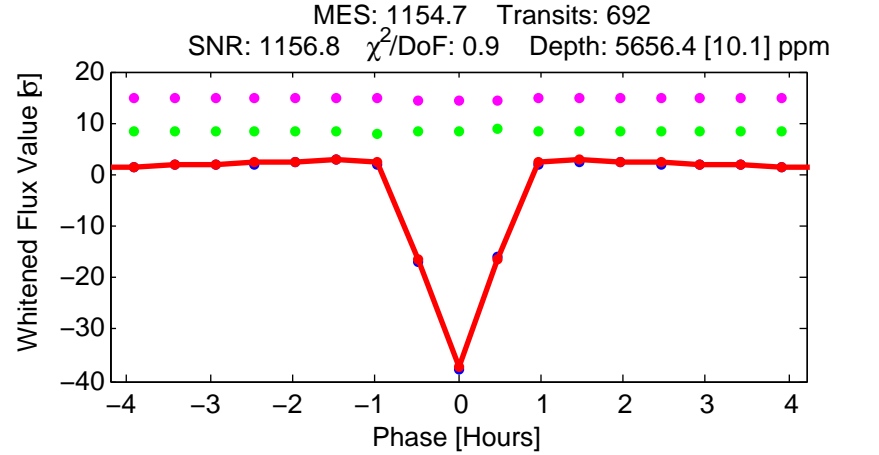
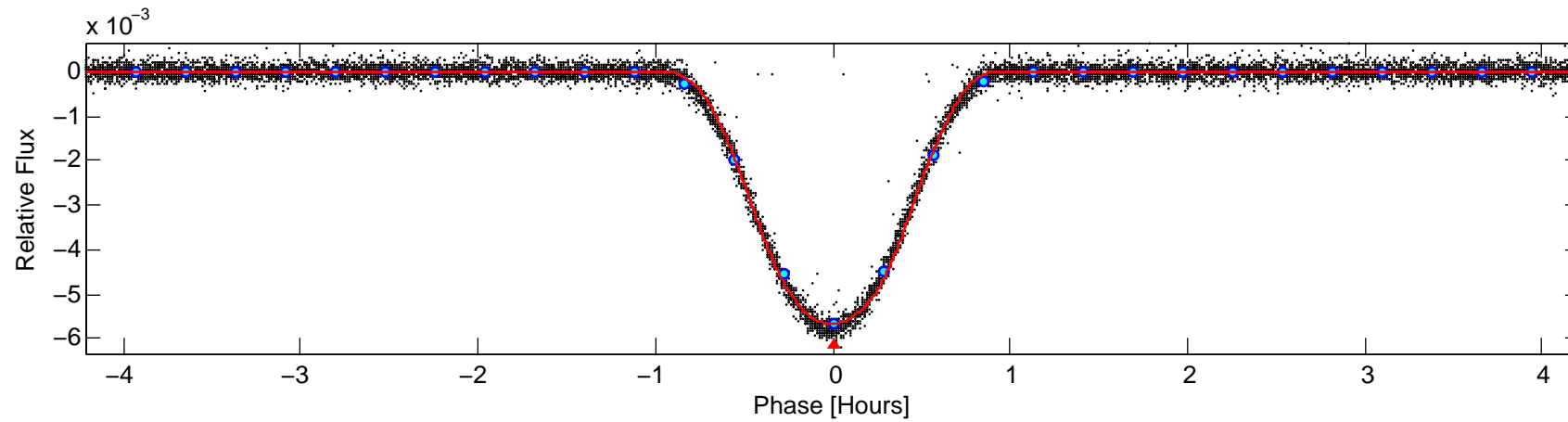
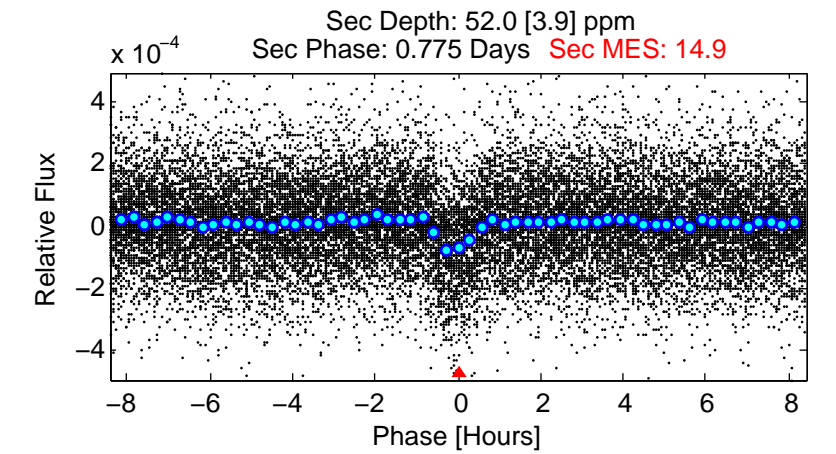
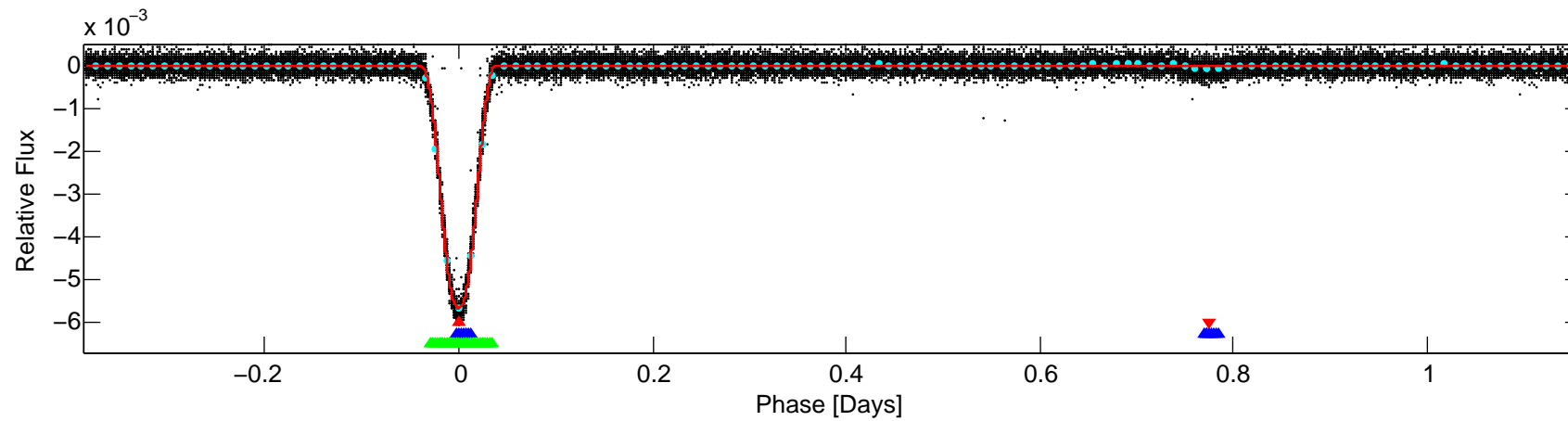
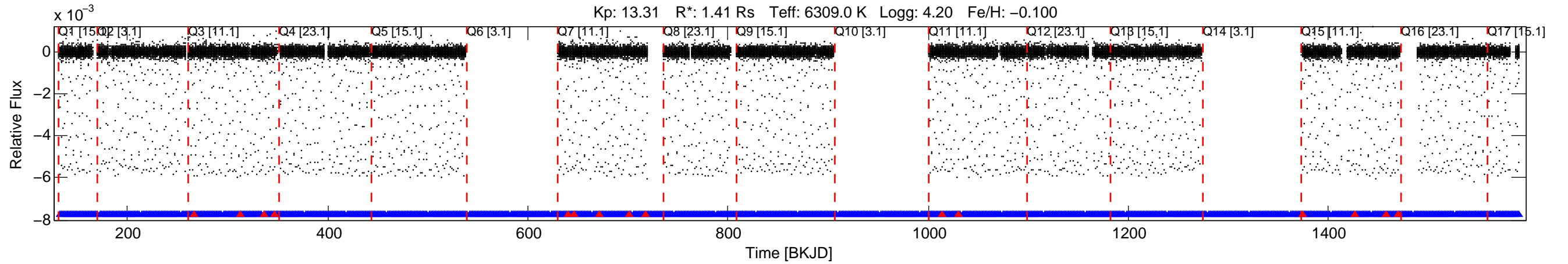


KIC: 4570949 Candidate: 1 of 3 Period: 1.545 d
 KOI: K01658.01 Name: Kepler-76b Corr: 0.990



DV Fit Results:

Period = 1.54493 [0.00000] d
 Epoch = 132.0034 [0.0000] BKJD
 Rp/R* = 0.0821 [0.0002]
 a/R* = 5.14 [0.03]
 b = 0.90 [0.00]
 Seff = 3767.74 [1018.53]
 Teq = 1998 [135] K
 Rp = 12.65 [2.28] Re
 a = 0.0274 [0.0045] AU
 Ag = 0.13 [0.04] [-23.95σ]
 Teffp = 1870 [51] K [-0.89σ]

DV Diagnostic Results:

ShortPeriod-sig: 100.0% [10.67σ]
LongPeriod-sig: 0.0% [0.00σ]
 ModelChiSquare2-sig: N/A
 ModelChiSquareGof-sig: N/A
 Bootstrap-pfa: N/A
 RollingBand-fgt: 0.98 [637/652]
 GhostDiagnostic-chr: 14.53
 Centroid-sig: N/A
Centroid-so: 0.699 arcsec [57.76σ]
 OotOffset-rm: 0.149 arcsec [0.58σ]
 KicOffset-rm: 0.033 arcsec [0.49σ]
 OotOffset-st: 1/4/4/5 [14]
 KicOffset-st: 1/4/4/5 [14]
 DiffImageQuality-fgm: 1.00 [14/14]
 DiffImageOverlap-fno: 0.00 [0/14]