

KIC 004276445

Q1-17 DR25 TCE Parameters

TCE	Run Type	KOI?	Period (Days)	Epoch (BKJD)	Depth (ppm)	Duration (Hours)	MES	SNR	R_{\star} (R_{\odot})	T_{\star} (K)	R_p (R_{\oplus})	S_p (S_{\oplus})
004276445-01	OBS	8092.01	405.654938	266.322228	543.1	10.907	7.3	7.9	0.89	6102	2.13	0.87

Robovetter Results

TCE	Run Type	Disp	Score	N	S	C	E	Comments
004276445-01	OBS	FP	0.05	1	0	0	0	INCONSISTENT_TRANS—CENT_FEW_DIFFS

Notes: OBS = Observed. INJ = Injected. INV = Inverted. SCR = Scrambled.

N = Not Transit-Like. S = Stellar Eclipse. C = Centroid Offset. E = Ephemeris Match.

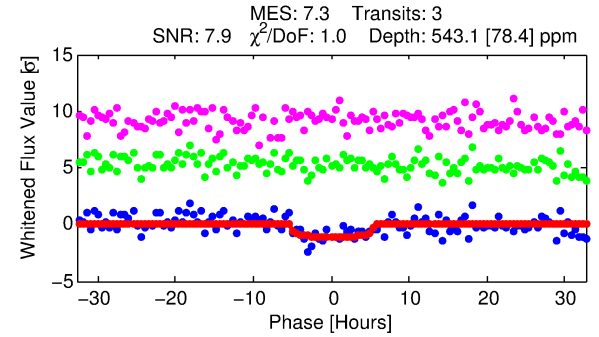
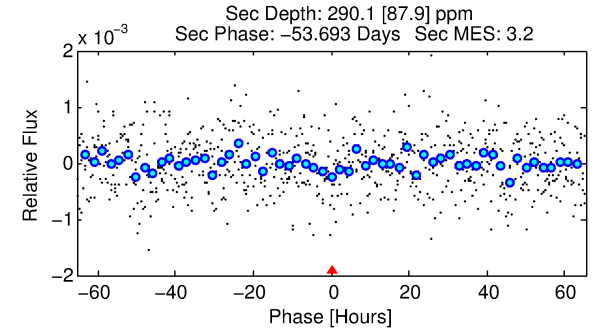
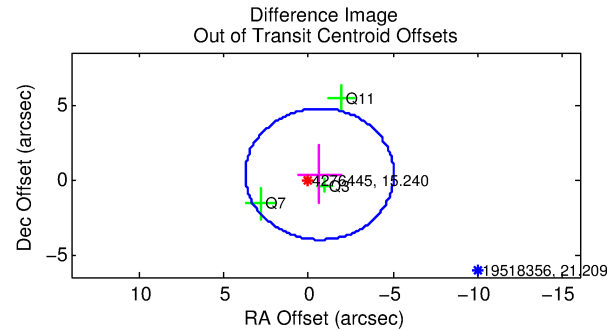
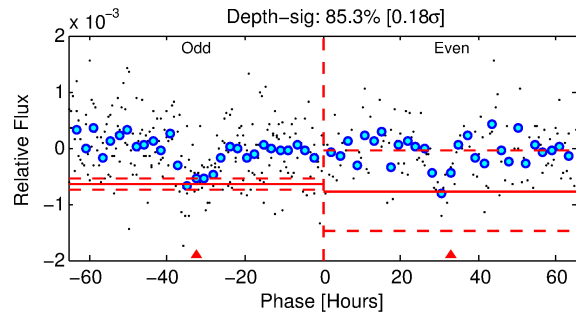
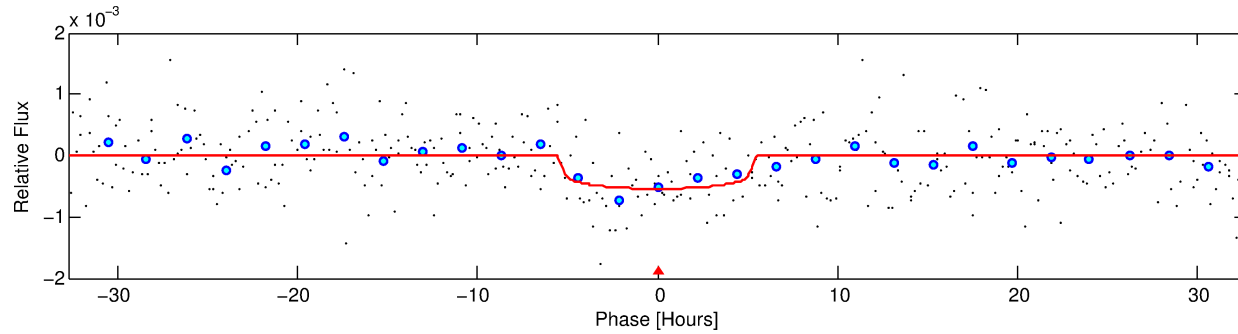
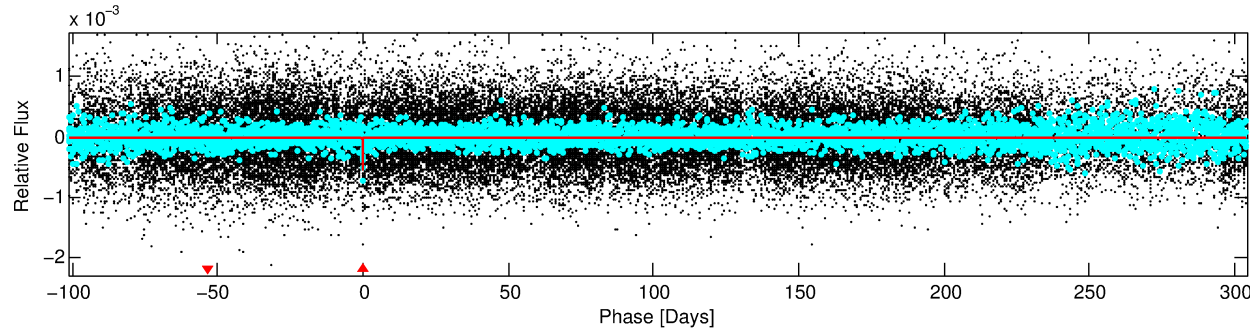
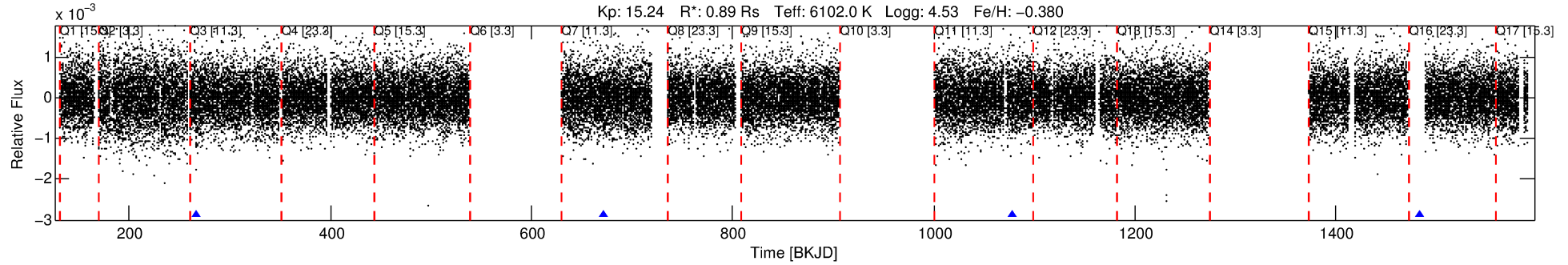
See http://exoplanetarchive.ipac.caltech.edu/docs/API_kepcandidate_columns.html#proj_disp_col for comment definitions.

Ephemeris Match Information For 004276445-01

No Significant Match Found

DV One-Page Summary

KIC: 4276445 Candidate: 1 of 1 Period: 405.655 d



DV Fit Results:

Period = 405.65494 [0.01558] d
Epoch = 266.3222 [0.0199] BKJD
Rp/R* = 0.0220 [0.0212]
a/R* = 253.67 [1232.77]
b = 0.50 [7.40]
Seff = 0.87 [0.33]
Teq = 246 [23] K
Rp = 2.13 [2.13] Re
a = 1.0611 [0.2525] AU
Ag = 39701.71 [78696.81] [0.50 σ]
Teffp = 5372 [2624] K [1.95 σ]

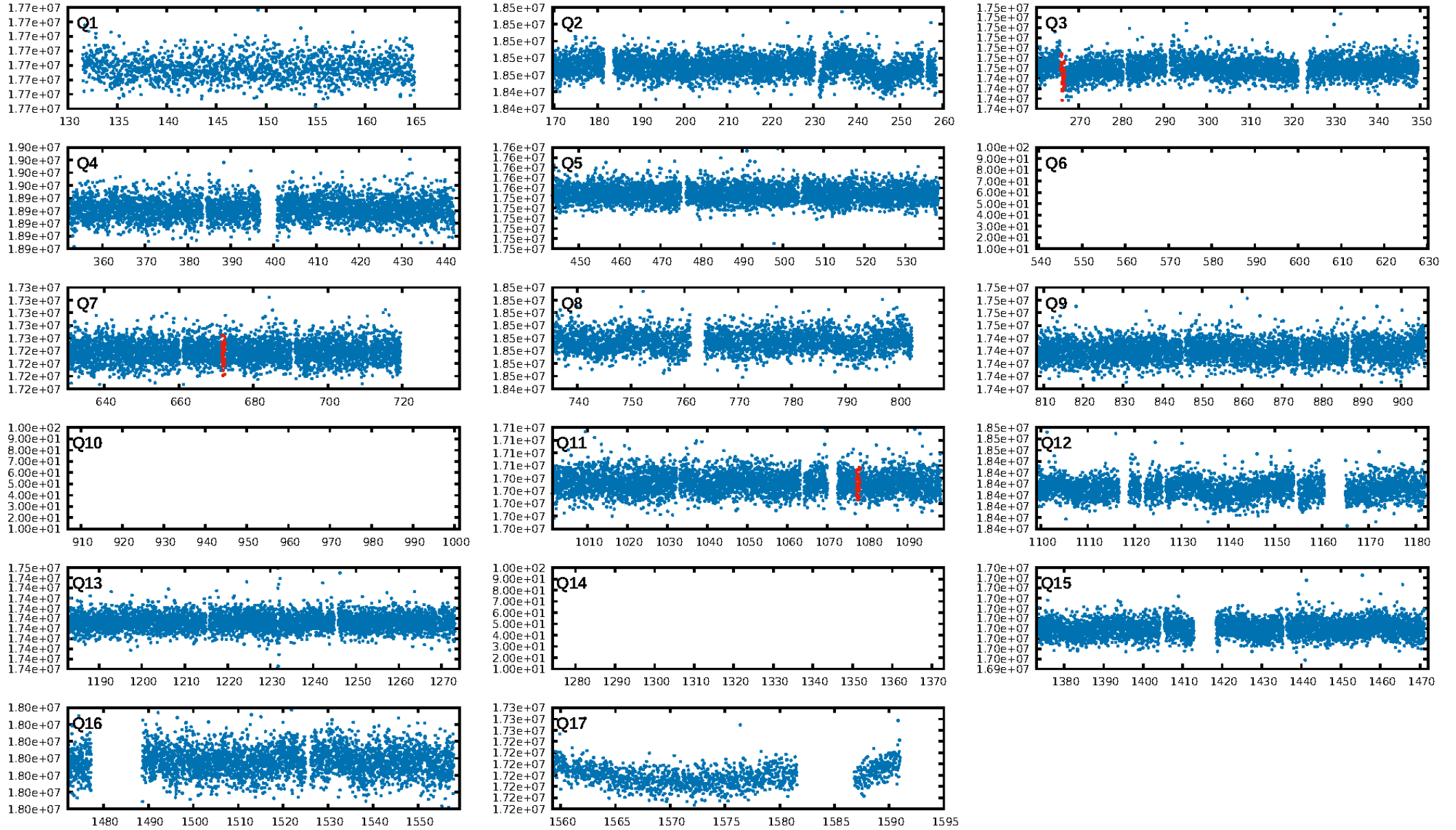
DV Diagnostic Results:

ShortPeriod-sig: N/A
LongPeriod-sig: N/A
ModelChiSquare2-sig: 1.0%
ModelChiSquareGof-sig: 99.2%
Bootstrap-pfa: 1.62e-14
RollingBand-fgt: 1.00 [3/3]
GhostDiagnostic-chr: 15.87
Centroid-sig: 90.4%
Centroid-so: 0.691 arcsec [0.33 σ]
OotOffset-rm: 0.744 arcsec [0.51 σ]
OotOffset-st: 0/3/0/0 [3]
KicOffset-rm: 0.942 arcsec [0.63 σ]
KicOffset-st: 0/3/0/0 [3]
DiffImageQuality-fgm: 0.33 [1/3]
DiffImageOverlap-fno: 1.00 [3/3]

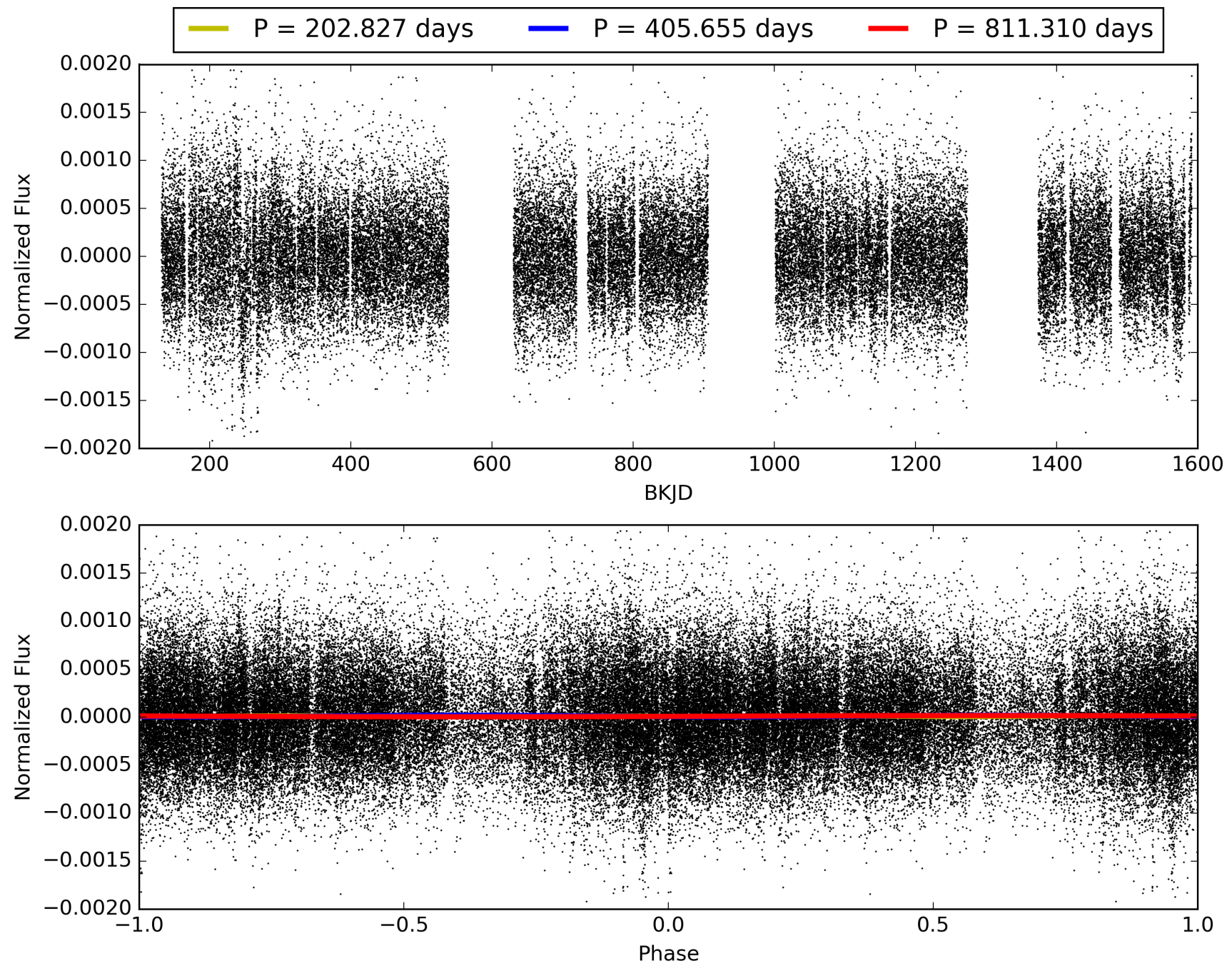
Software Revision: svn+ssh://murzim/repo/soc/tags/release/9.3.42@60958 -- Date Generated: 29-Jan-2016 20:03:00 Z

This Data Validation Report Summary was produced in the Kepler Science Operations Center Pipeline at NASA Ames Research Center

TCE 004276445-01, PDC Light Curves

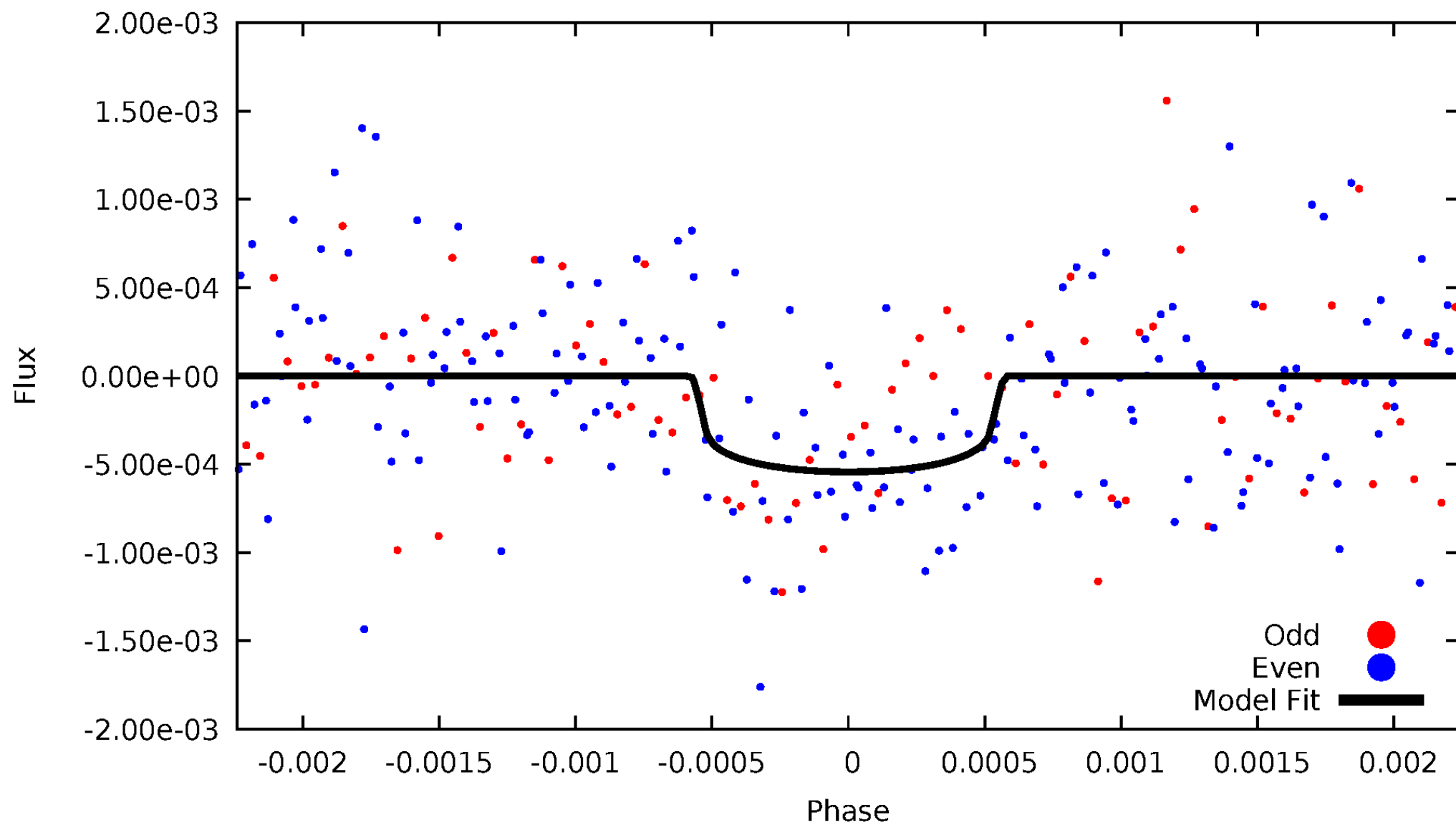


TCE 004276445-01



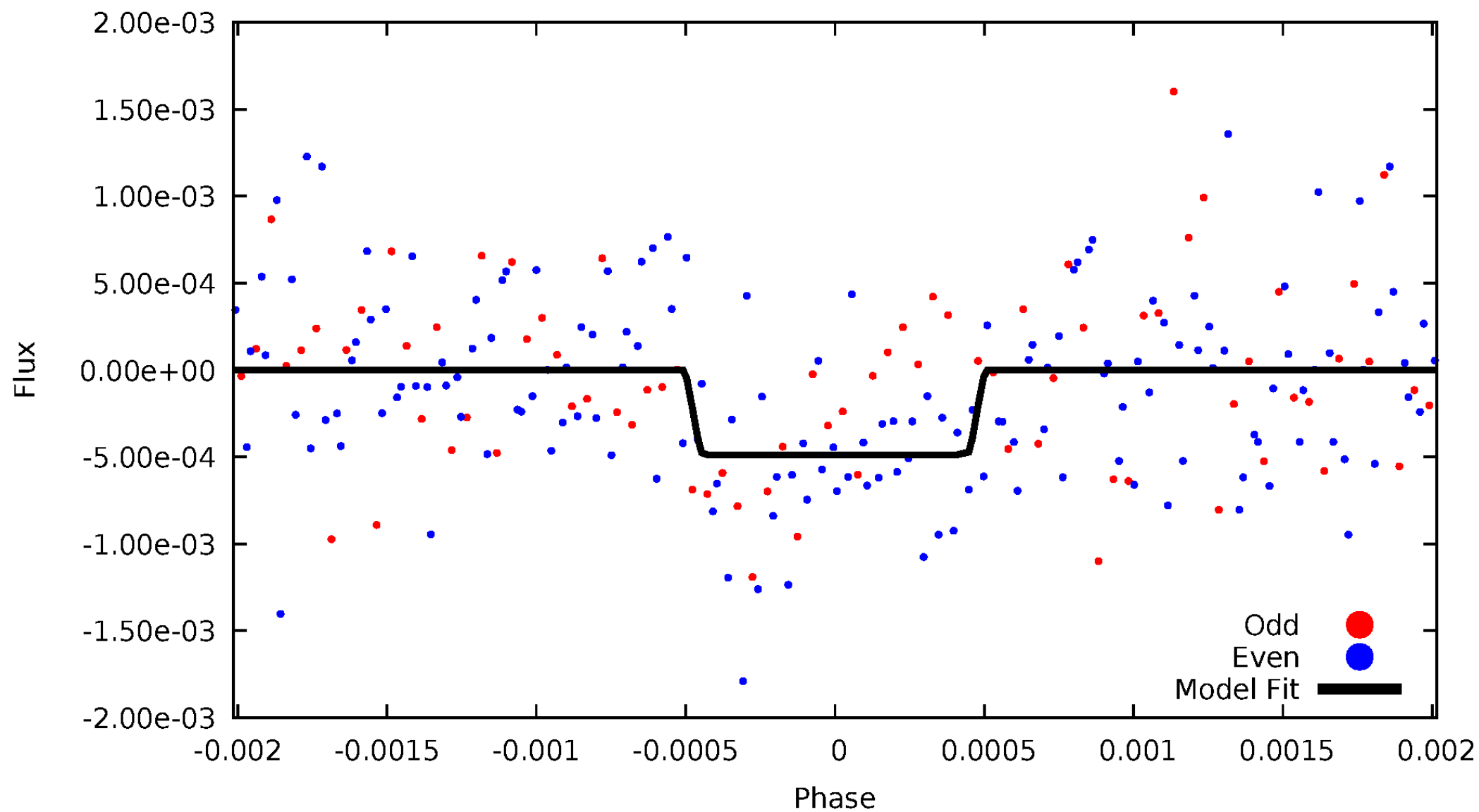
DV Odd/Even

TCE 004276445-01



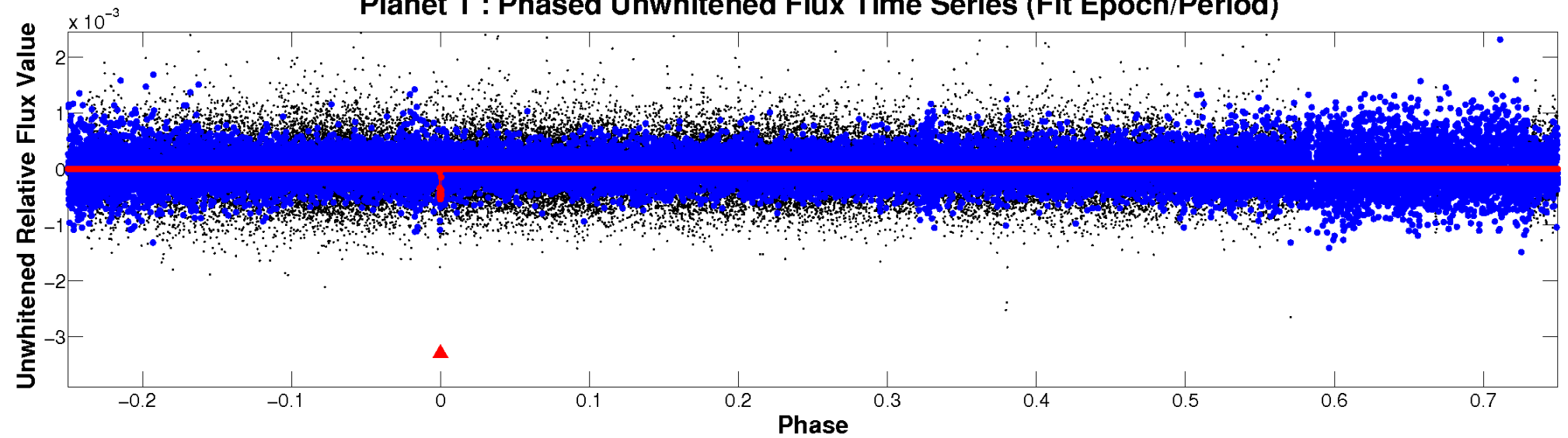
ALT Odd/Even

TCE 004276445-01

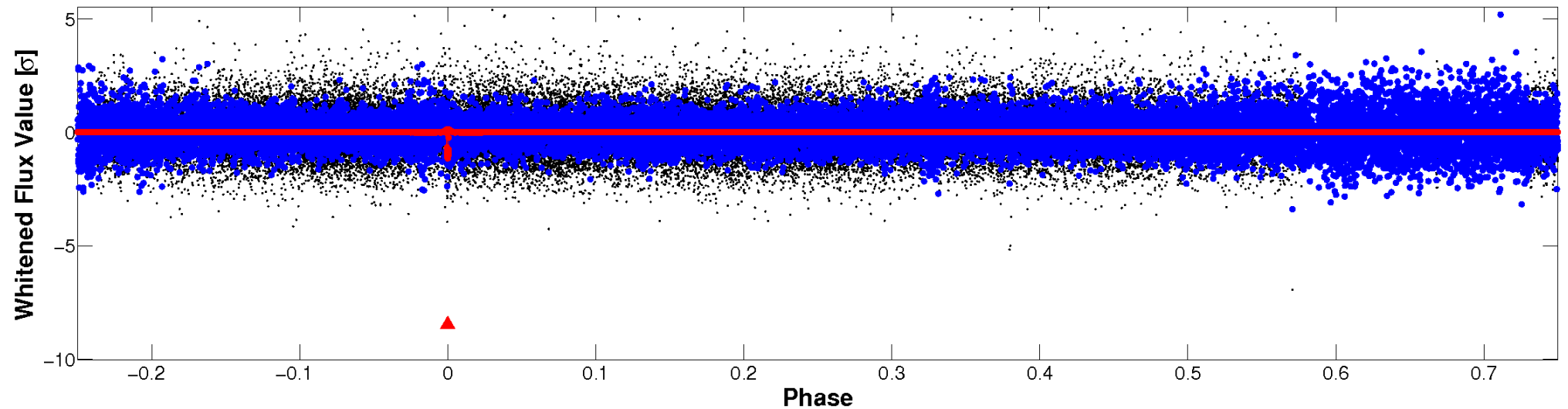


Non-Whitened Vs. Whitened Light Curve

Planet 1 : Phased Unwhitened Flux Time Series (Fit Epoch/Period)



Planet 1 : Phased Whitened Flux Time Series (Fit Epoch/Period)



PDC Quarter-Phased Transit Curves

TCE 004276445-01 P=405.654938 Days $T_0=266.322228$ (BKJD)



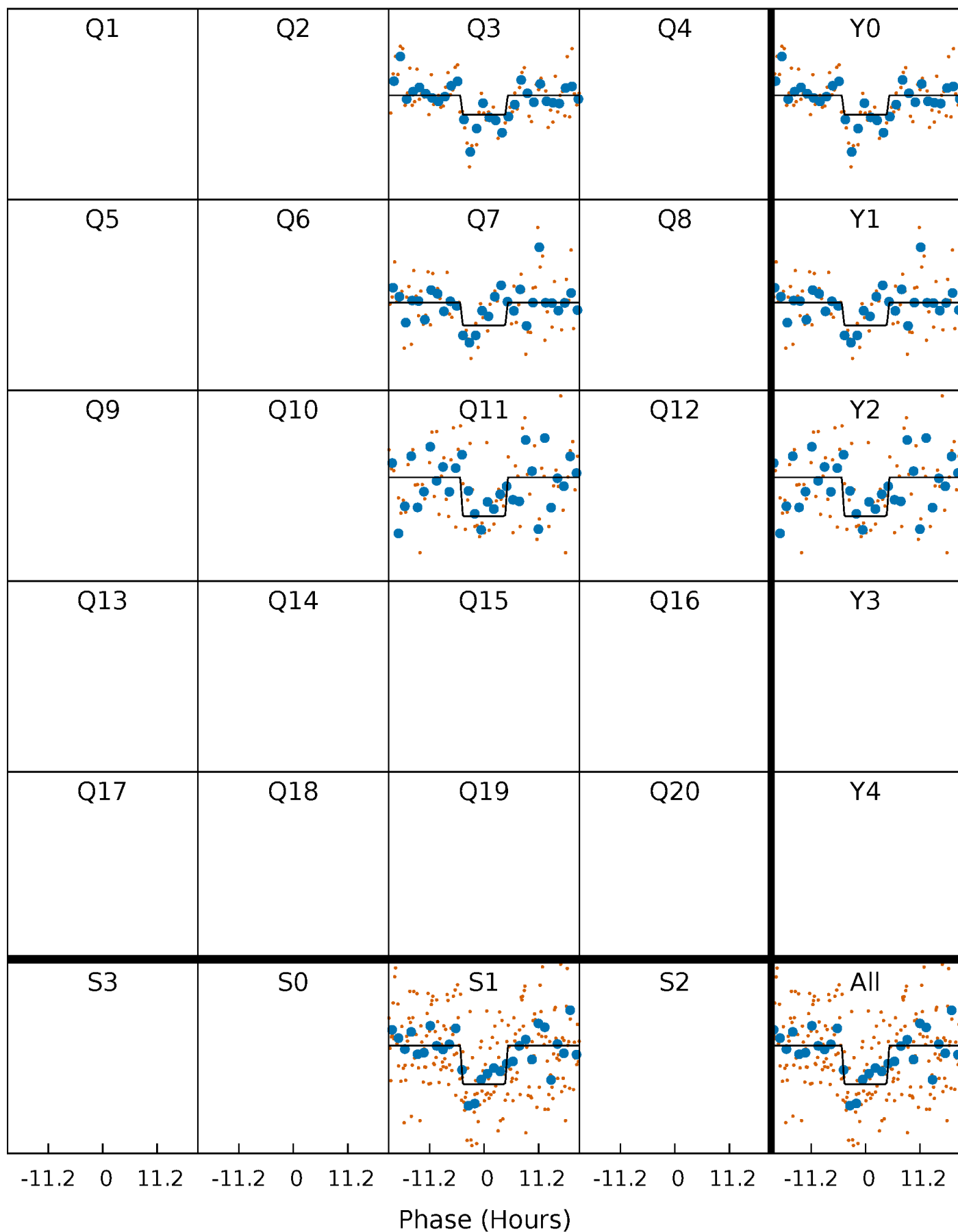
DV Quarter-Phased Transit Curves

TCE 004276445-01 P=405.654938 Days $T_0=266.322228$ (BKJD)



Alt. Detrend Quarter-Phased Transit Curves

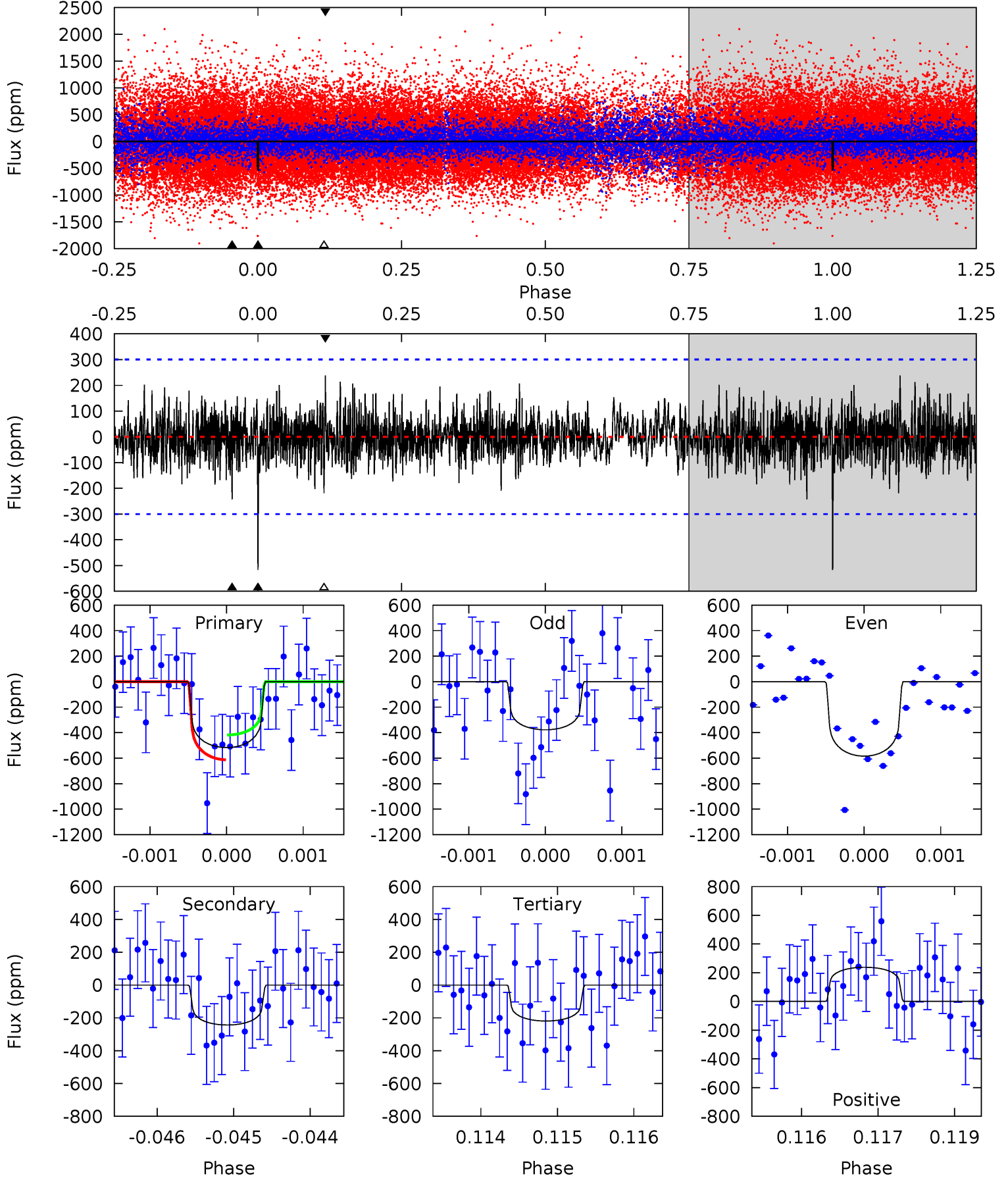
TCE 004276445-01 P=405.674278 Days $T_0=266.316555$ (BKJD)



DV Model-Shift Uniqueness Test

004276445-01, P = 405.654938 Days, E = 266.322228 Days

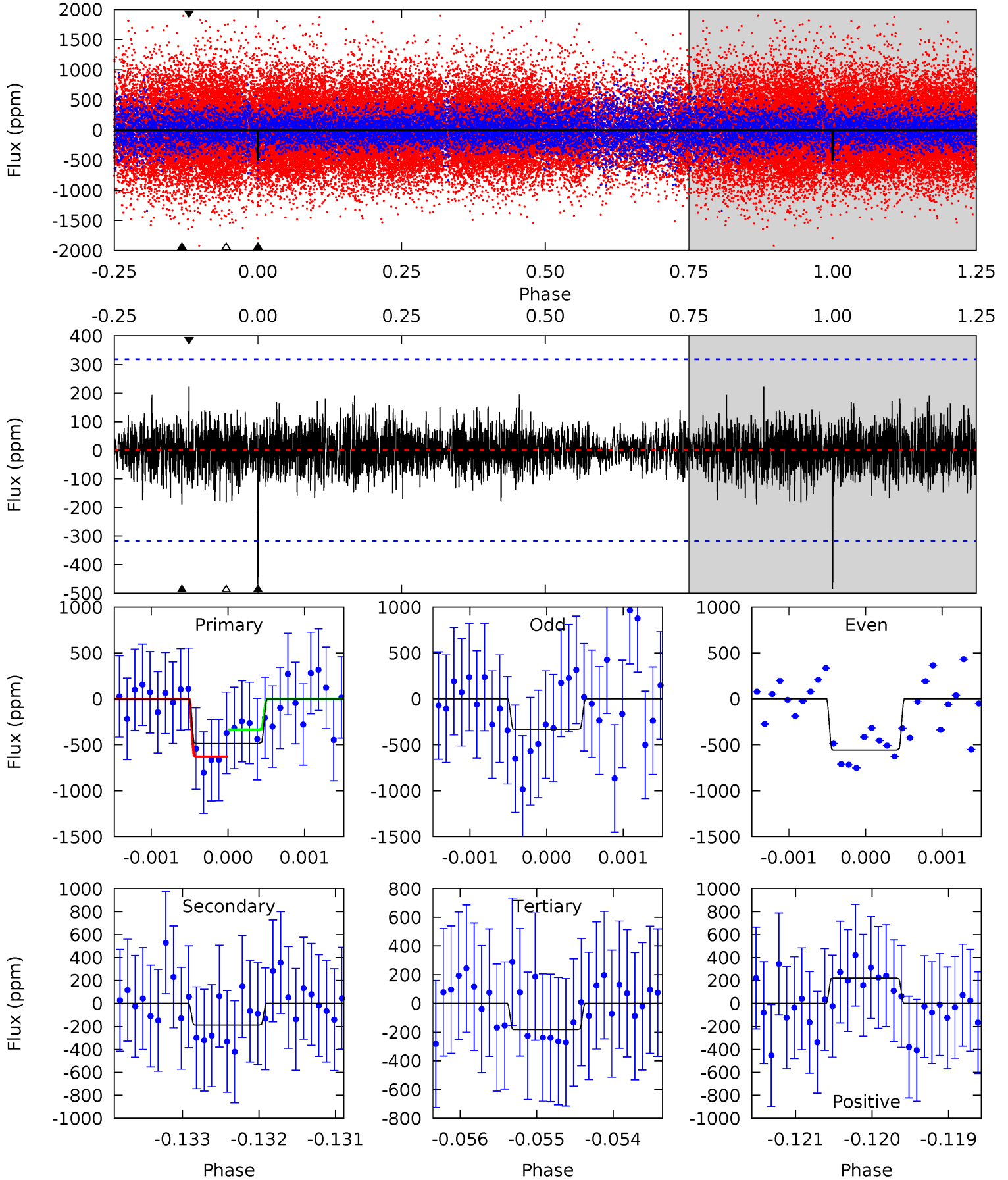
Pri	Sec	Ter	Pos	FA ₁	FA ₂	F _{Red}	Pri-Ter	Pri-Pos	Sec-Ter	Sec-Pos	Odd-Evn	DMM	Shape	TAT
9.33	4.40	3.96	4.30	5.43	3.25	1.12	5.37	5.03	0.44	0.09	1.78	1.36	0.32	1.74



Alt Model-Shift Uniqueness Test

004276445-01, P = 405.674278 Days, E = 266.316555 Days

Pri	Sec	Ter	Pos	FA ₁	FA ₂	F _{Red}	Pri-Ter	Pri-Pos	Sec-Ter	Sec-Pos	Odd-Evn	DMM	Shape	TAT
8.31	3.24	3.12	3.80	5.45	3.29	0.88	5.19	4.51	0.12	-0.56	1.84	1.42	0.31	2.51



Stellar Parameters For KIC 004276445

	$T_{\text{eff}} (K)$	$\log(g)$	$[\text{Fe}/\text{H}]$	$R (R_{\odot})$	$M (M_{\odot})$	$p_{\star} (\text{g}\cdot\text{cm}^{-3})$
	6102^{+183}_{-201}	$4.528^{+0.050}_{-0.200}$	$-0.380^{+0.300}_{-0.300}$	$0.887^{+0.242}_{-0.086}$	$0.968^{+0.115}_{-0.128}$	$1.952^{+0.483}_{-0.941}$
	+3%/-3%	+1%/-4%	+79%/-79%	+27%/-10%	+12%/-13%	+25%/-48%
Source	PHO1	KIC0	KIC0	DSEP		

KIC = Kepler Input Catalog; PHO = Photometry; SPE = Spectroscopy; AST = Asteroseismology
 TRA = Transits; DESP = Dartmouth Models; MULT = Multiple Models

Secondary Eclipse Parameters for KIC 004276445-01 / KOI 8092.01

Detrend	Depth (ppm)	$R_p (R_{\oplus})$	$T_{\text{max}} (K)$	$T_{\text{obs}} (K)$	A_{obs}
DV	-243 ± 55	$2.57^{+2.01}_{-1.63}$	351^{+23}_{-17}	4880^{+3263}_{-977}	$22358^{+141680}_{-15681}$
Alt.	-189 ± 58	$2.60^{+1.90}_{-1.66}$	351^{+22}_{-17}	4594^{+2749}_{-854}	$16001^{+109153}_{-10873}$

T_{max} = Theoretical Maximum Planetary Temperature

T_{obs} = Observed Planetary Temperature (Assuming $A=0.3$)

A_{obs} = Observed Albedo (Assuming $T=0$)

If a secondary eclipse is present, the system is likely an EB if $T_{\text{obs}} \gg T_{\text{max}}$ AND $A_{\text{obs}} \gg 1.0$

DV Centroid Data

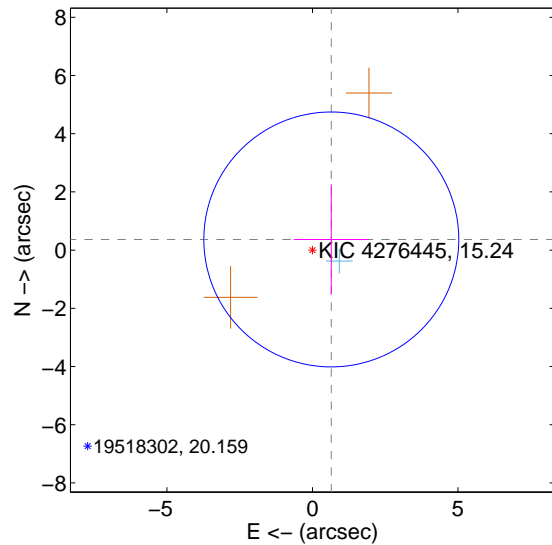
Supplemental centroid analysis for 004276445-01. Kepler magnitude: 15.24. Transit SNR 7.91

There are 1 quarters with good PRF difference image offsets

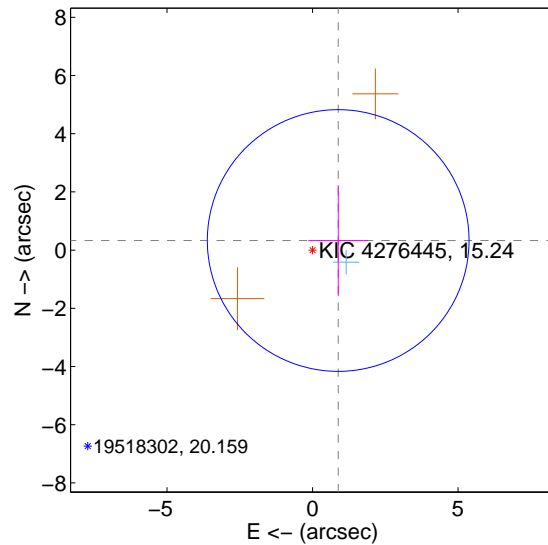
The direct PRF centroid is offset from the target star catalog position by about 0.22 arcsec

	Distance in arcsec	Distance / σ	Δ RA	Δ Dec
PRF-fit source offset from OOT	0.744 ± 1.460	0.51	-0.648 ± 1.291	0.366 ± 1.894
PRF-fit source offset from KIC position	0.942 ± 1.499	0.63	-0.882 ± 1.024	0.330 ± 1.904
photometric centroid source offset	0.69 ± 2.08	0.33	-0.69 ± 2.08	0.03 ± 2.00

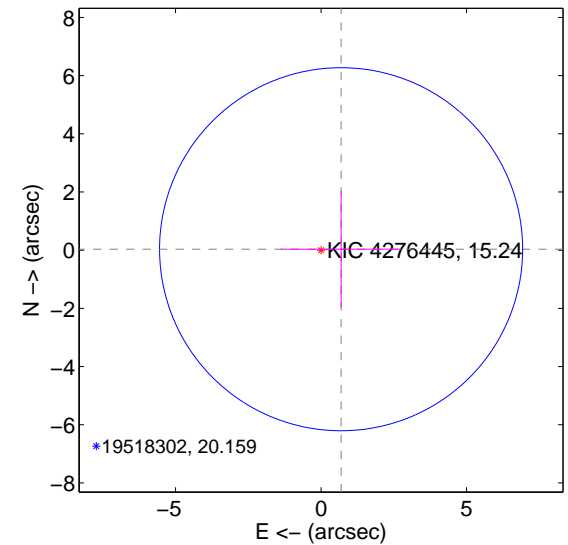
offset from difference PRF-fit to OOT PRF-fit



offset from difference PRF-fit to KIC position

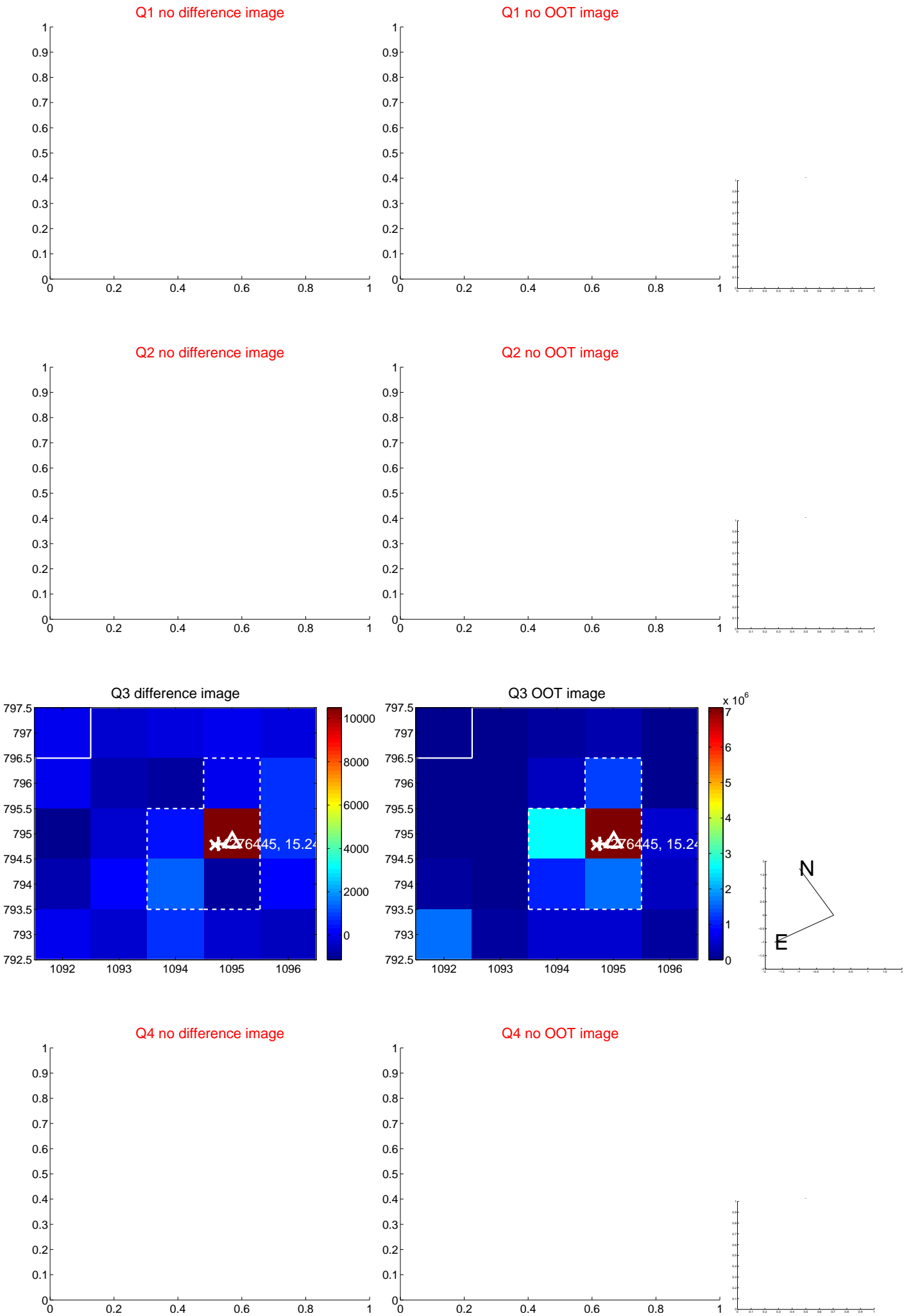


offset from photometric centroids

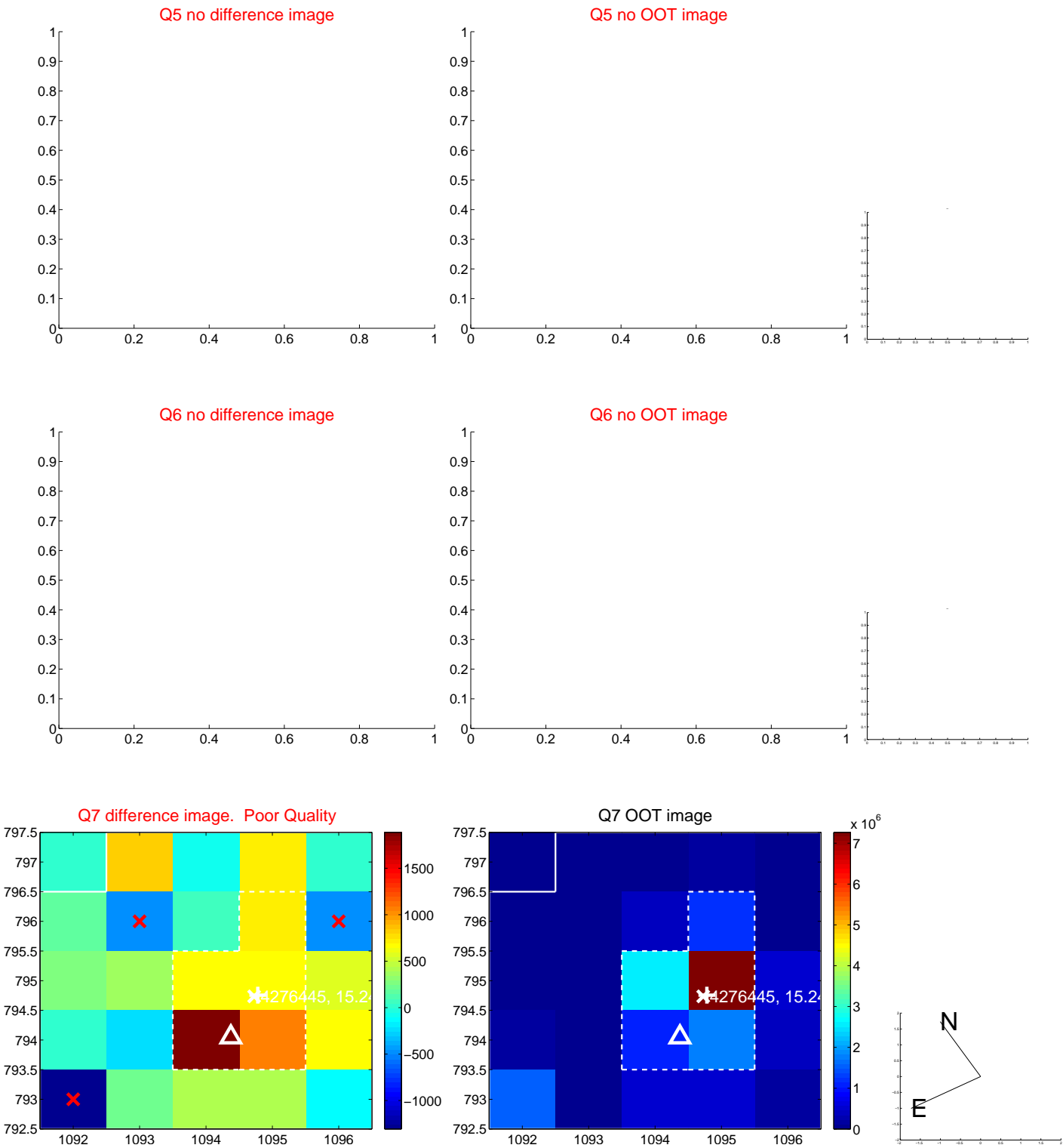


Centroid source offsets from the target star reconstructed from PRF and photometric centroids. Sky blue crosses: good quarterly centroid offsets; Vermillion crosses: bad quarterly centroid offsets; magenta cross: average over quarters. Length of the crosses: one- σ uncertainty. Blue circle: three- σ . Red *: target star. Blue *: Other stars. Text next to a star gives its KIC ID and kepmag. KIC IDs > 15,000,000 are from the UKIRT catalog.

white ×: KIC target position; +: OOT centroid; △: difference centroid. red ×: large negative pixel value.



white ×: KIC target position; +: OOT centroid; △: difference centroid. red ✕: large negative pixel value.



white ×: KIC target position; +: OOT centroid; △: difference centroid. red ✕: large negative pixel value.

Q9 no difference image



Q9 no OOT image



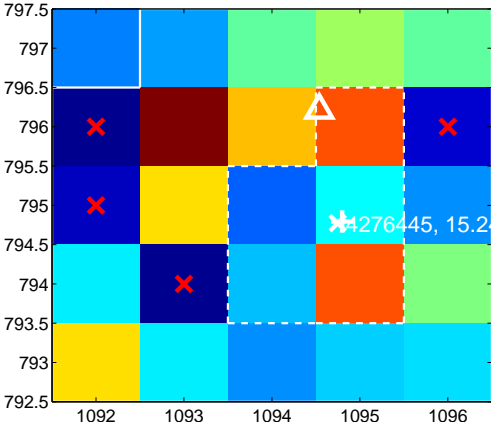
Q10 no difference image



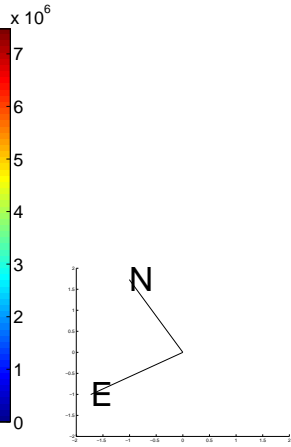
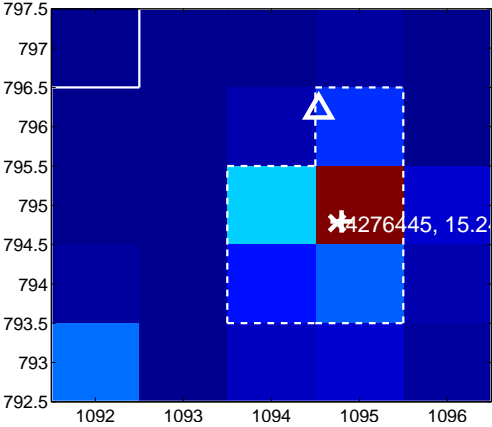
Q10 no OOT image



Q11 difference image. Poor Quality



Q11 OOT image



Q12 no difference image



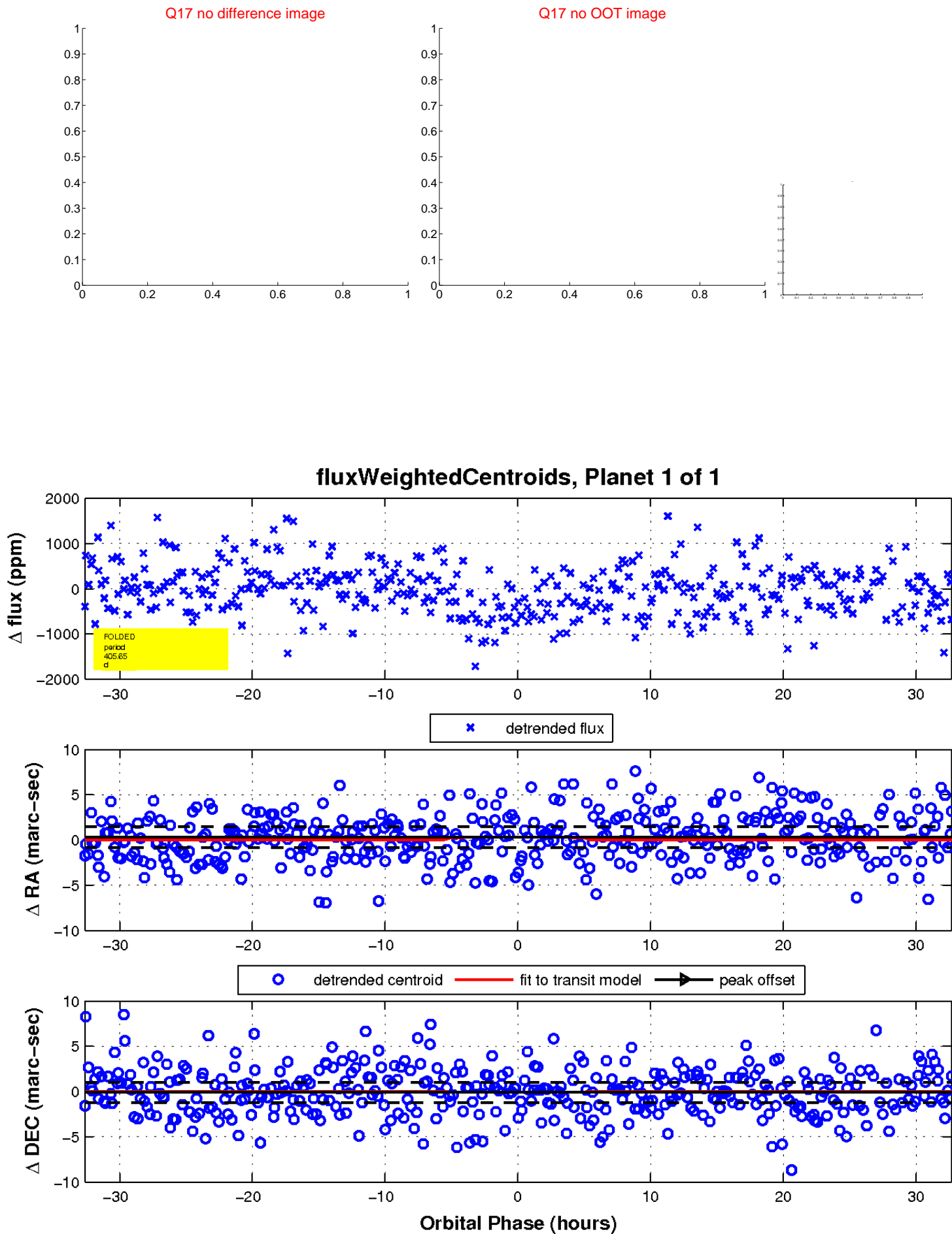
Q12 no OOT image



white \times : KIC target position; $+$: OOT centroid; \triangle : difference centroid. red \times : large negative pixel value.



white \times : KIC target position; $+$: OOT centroid; \triangle : difference centroid. red \times : large negative pixel value.



UKIRT Image

Declination

