

KIC 003935200

Q1-17 DR25 TCE Parameters

TCE	Run Type	KOI?	Period (Days)	Epoch (BKJD)	Depth (ppm)	Duration (Hours)	MES	SNR	R_{\star} (R_{\odot})	T_{\star} (K)	R_p (R_{\oplus})	S_p (S_{\oplus})
003935200-01	OBS	No	2.002136	131.715158	18.0	6.290	8.3	8.2	0.80	5229	0.33	508.77

Robovetter Results

TCE	Run Type	Disp	Score	N	S	C	E	Comments
003935200-01	OBS	FP	0.00	1	0	0	0	LPP_DV

Notes: OBS = Observed. INJ = Injected. INV = Inverted. SCR = Scrambled.

N = Not Transit-Like. S = Stellar Eclipse. C = Centroid Offset. E = Ephemeris Match.

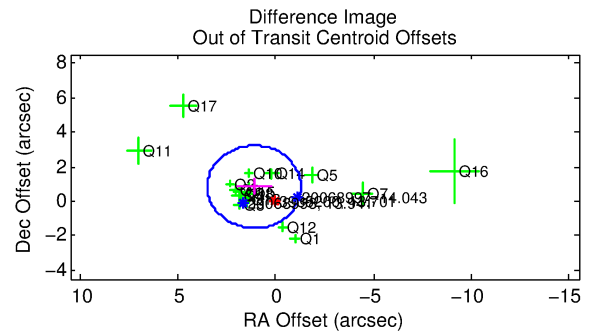
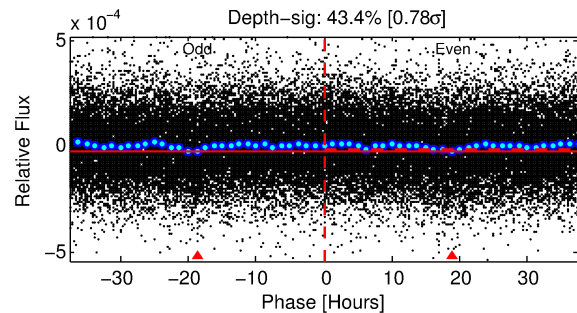
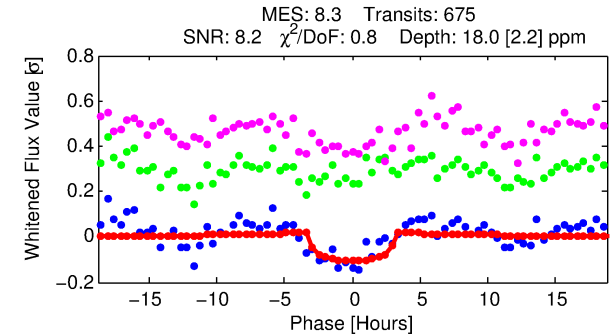
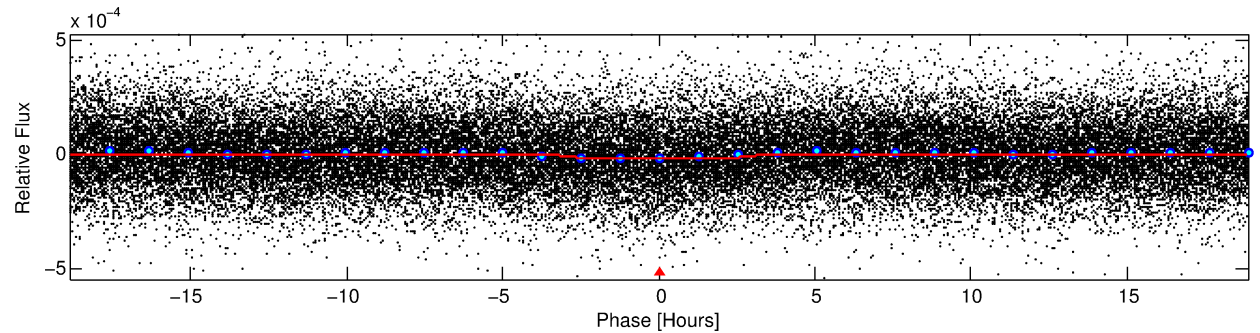
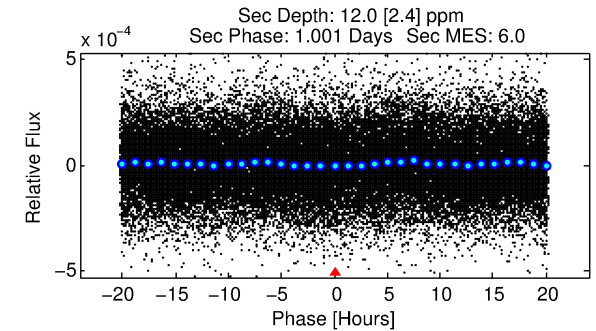
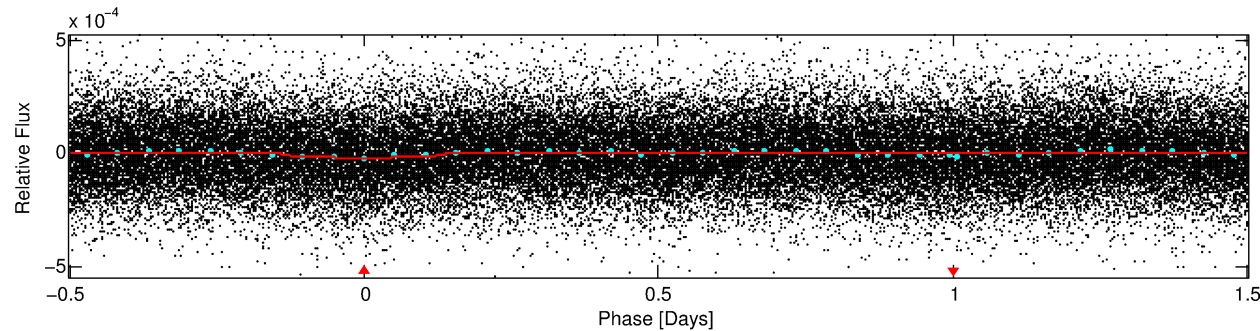
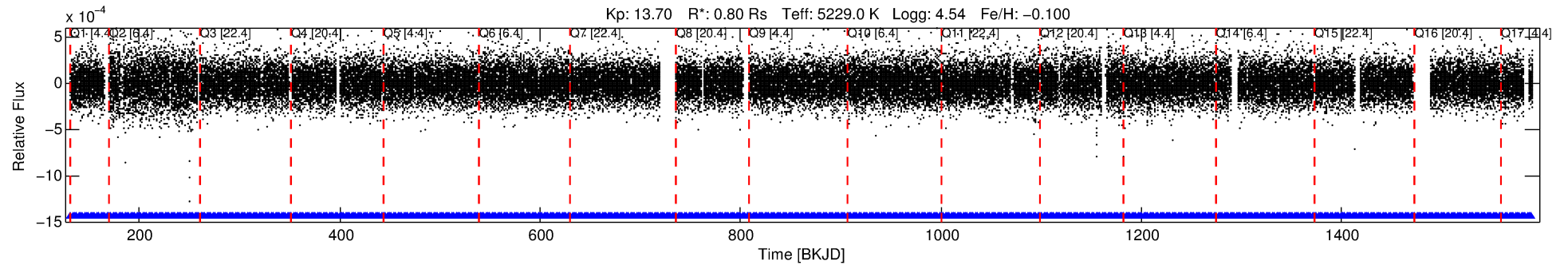
See http://exoplanetarchive.ipac.caltech.edu/docs/API_kepcandidate_columns.html#proj_disp_col for comment definitions.

Ephemeris Match Information For 003935200-01

No Significant Match Found

DV One-Page Summary

KIC: 3935200 Candidate: 1 of 1 Period: 2.002 d



DV Fit Results:

Period = 2.00214 [0.00003] d
Epoch = 131.7152 [0.0082] BKJD
Rp/R* = 0.0038 [0.0048]
a/R* = 2.51 [9.97]
b = 0.03 [143.76]
Seff = 508.77 [116.02]
Teq = 1211 [69] K
Rp = 0.33 [0.42] Re
a = 0.0289 [0.0034] AU
Ag = 50.81 [128.72] [0.39σ]
Teffp = 4999 [3165] K [1.20σ]

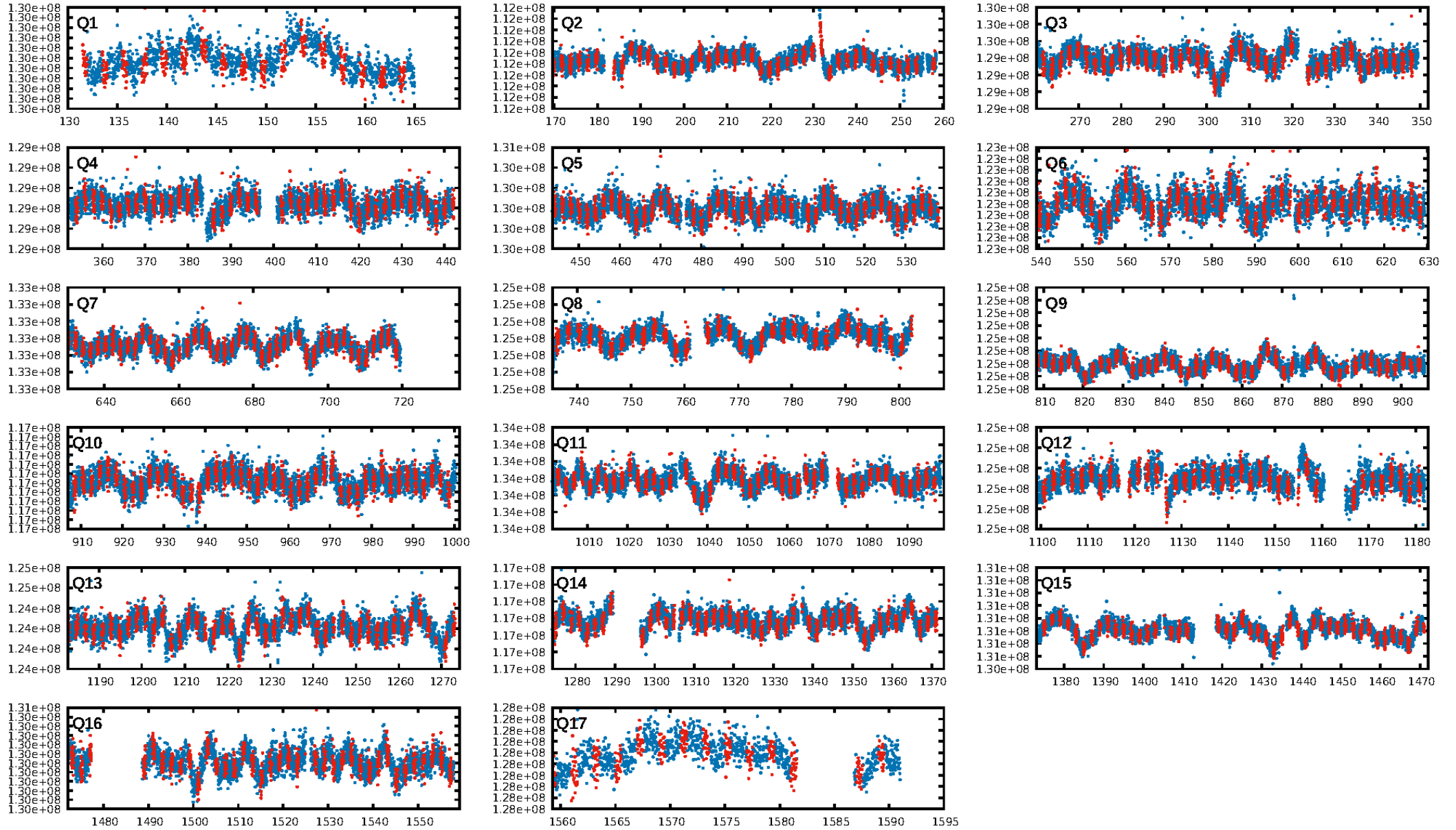
DV Diagnostic Results:

ShortPeriod-sig: N/A
LongPeriod-sig: N/A
ModelChiSquare2-sig: N/A
ModelChiSquareGof-sig: N/A
Bootstrap-pfa: 7.79e-15
RollingBand-fgt: 1.00 [644/644]
GhostDiagnostic-chr: 3.292
Centroid-sig: 4.8%
Centroid-so: 1.877 arcsec [1.56σ]
OotOffset-rm: 1.384 arcsec [1.74σ]
KicOffset-rm: 1.132 arcsec [1.29σ]
OotOffset-st: 3/4/4/5 [16]
KicOffset-st: 3/4/4/5 [16]
DiffImageQuality-fgm: 0.69 [11/16]
DiffImageOverlap-fno: 1.00 [17/17]

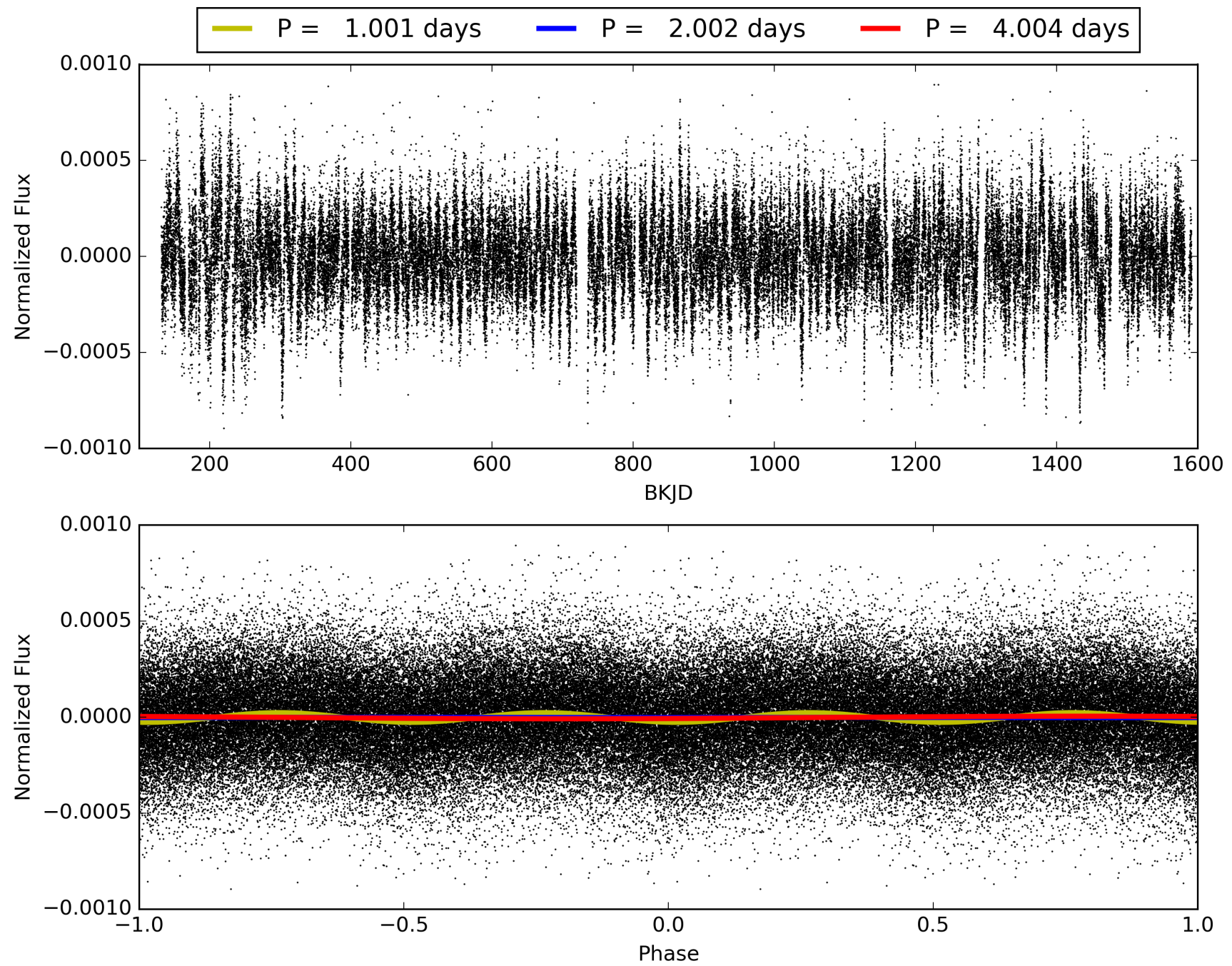
Software Revision: svn+ssh://murzim/repo/soc/tags/release/9.3.42@60958 -- Date Generated: 01-Feb-2016 01:07:54 Z

This Data Validation Report Summary was produced in the Kepler Science Operations Center Pipeline at NASA Ames Research Center

TCE 003935200-01, PDC Light Curves

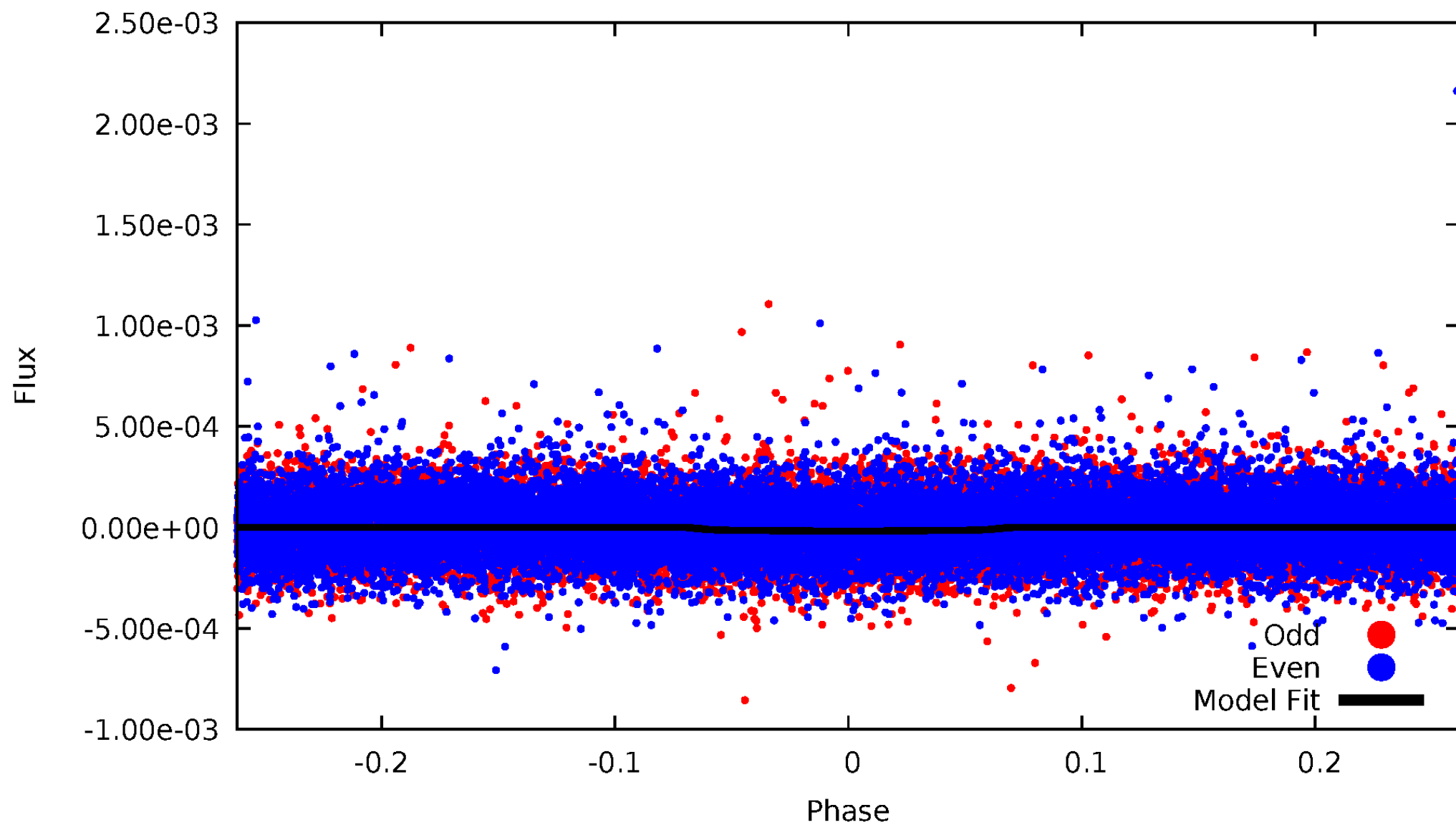


TCE 003935200-01



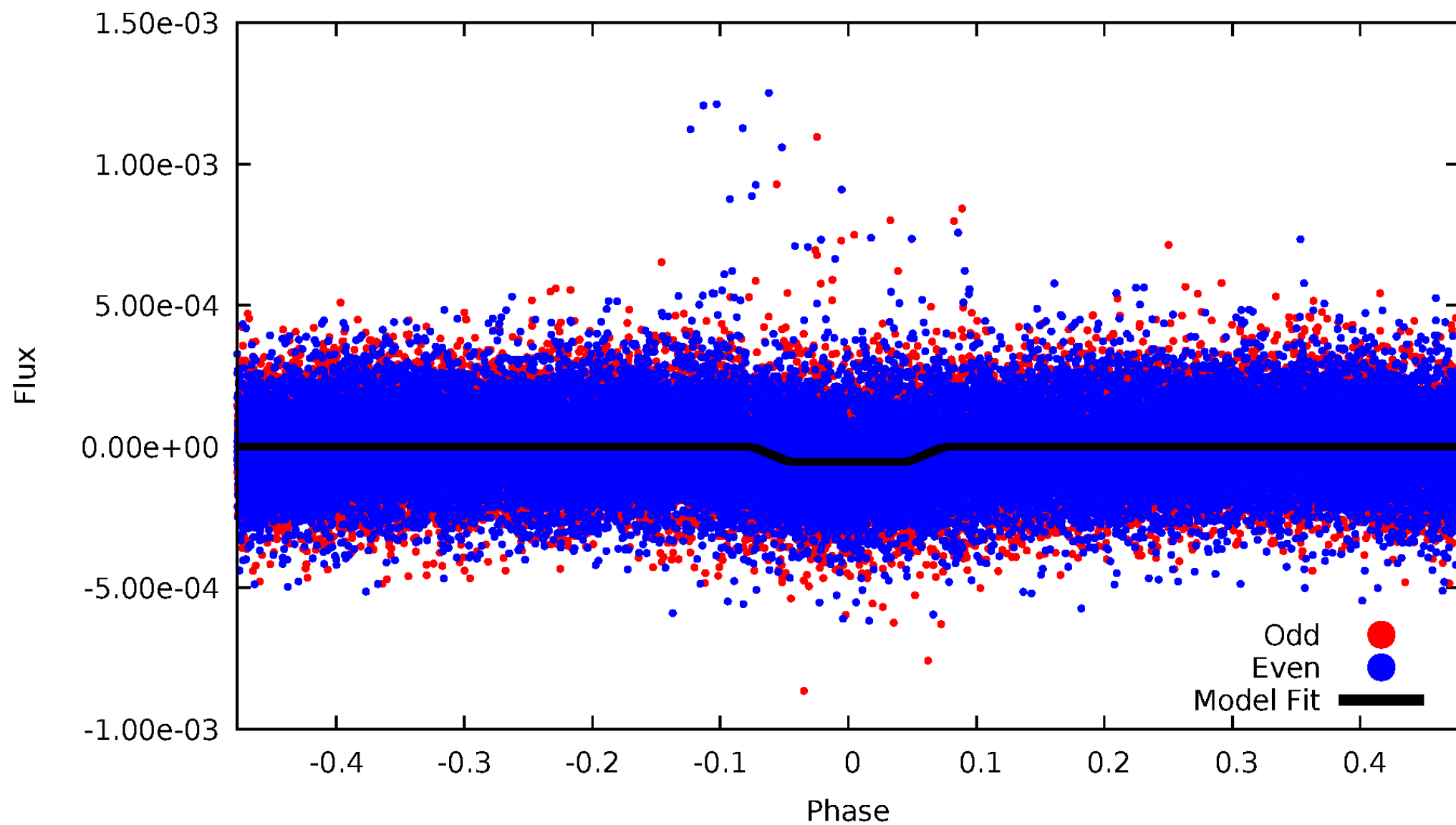
DV Odd/Even

TCE 003935200-01



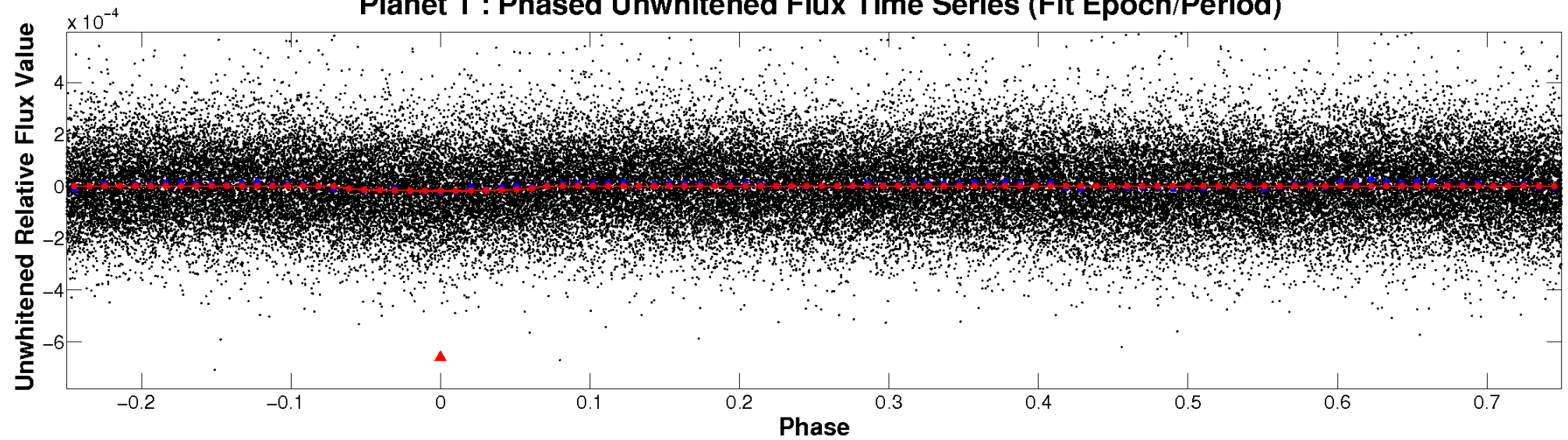
ALT Odd/Even

TCE 003935200-01

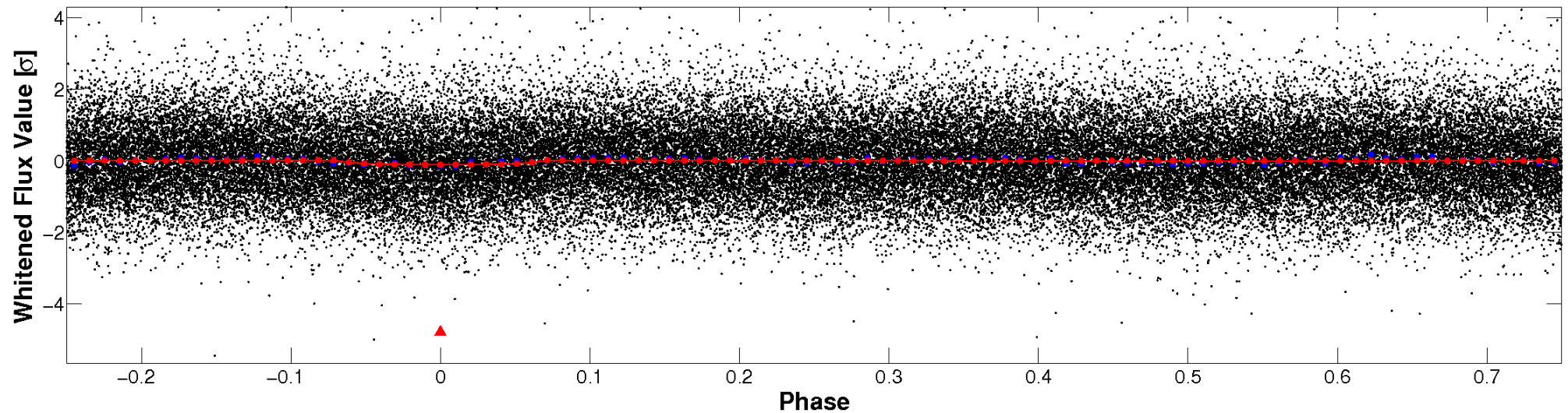


Non-Whitened Vs. Whitened Light Curve

Planet 1 : Phased Unwhitened Flux Time Series (Fit Epoch/Period)

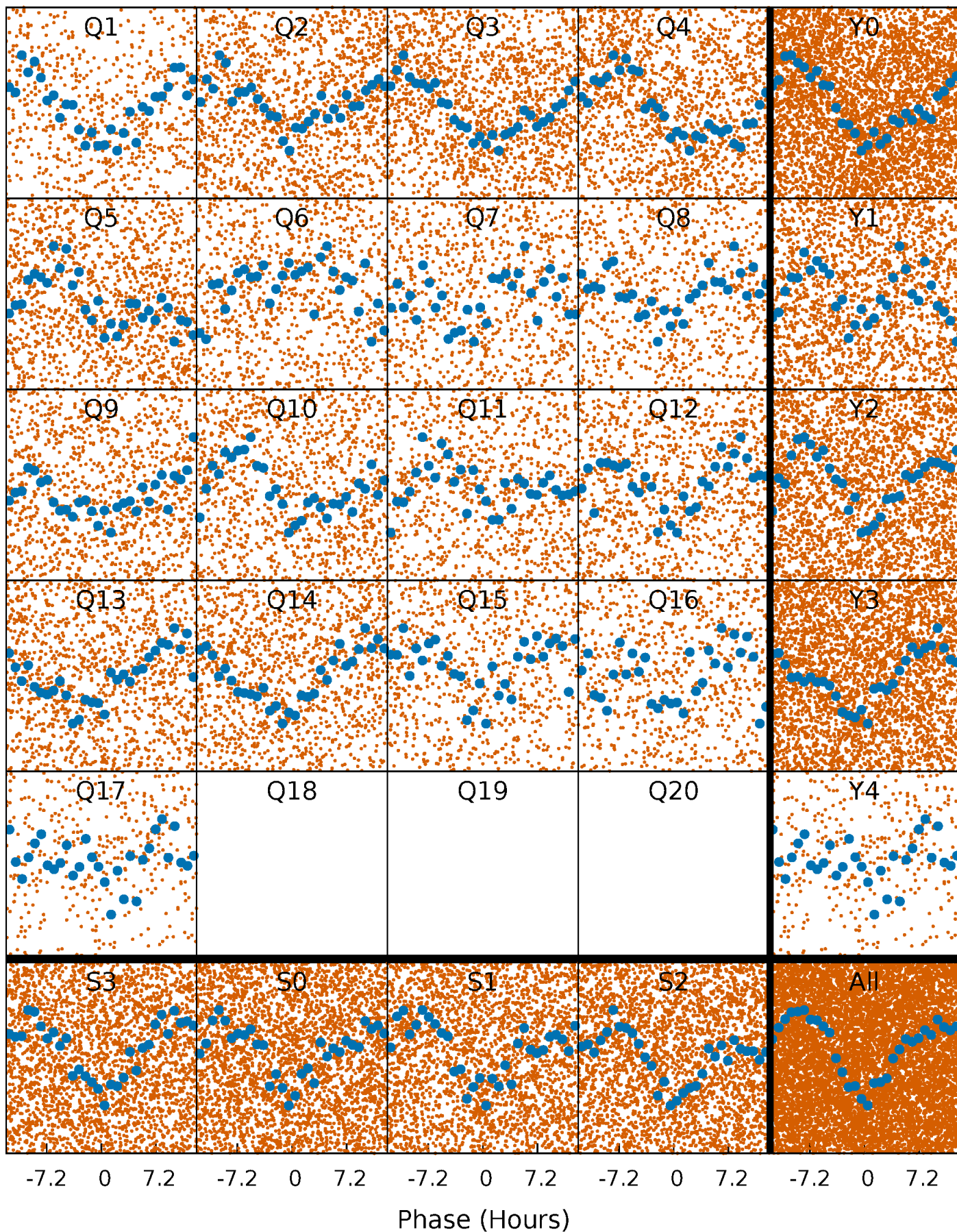


Planet 1 : Phased Whitened Flux Time Series (Fit Epoch/Period)



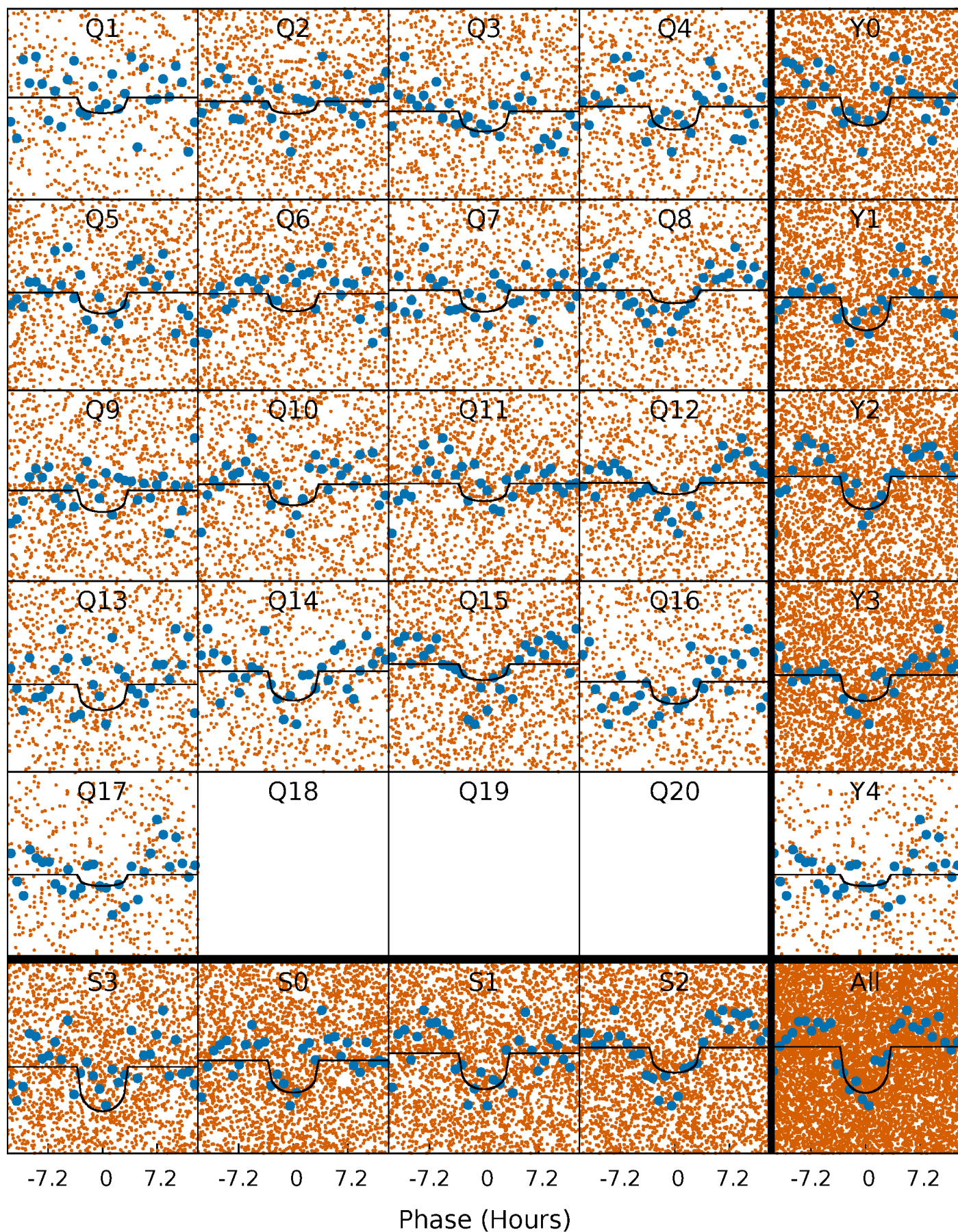
PDC Quarter-Phased Transit Curves

TCE 003935200-01 P= 2.002136 Days $T_0=131.715158$ (BKJD)



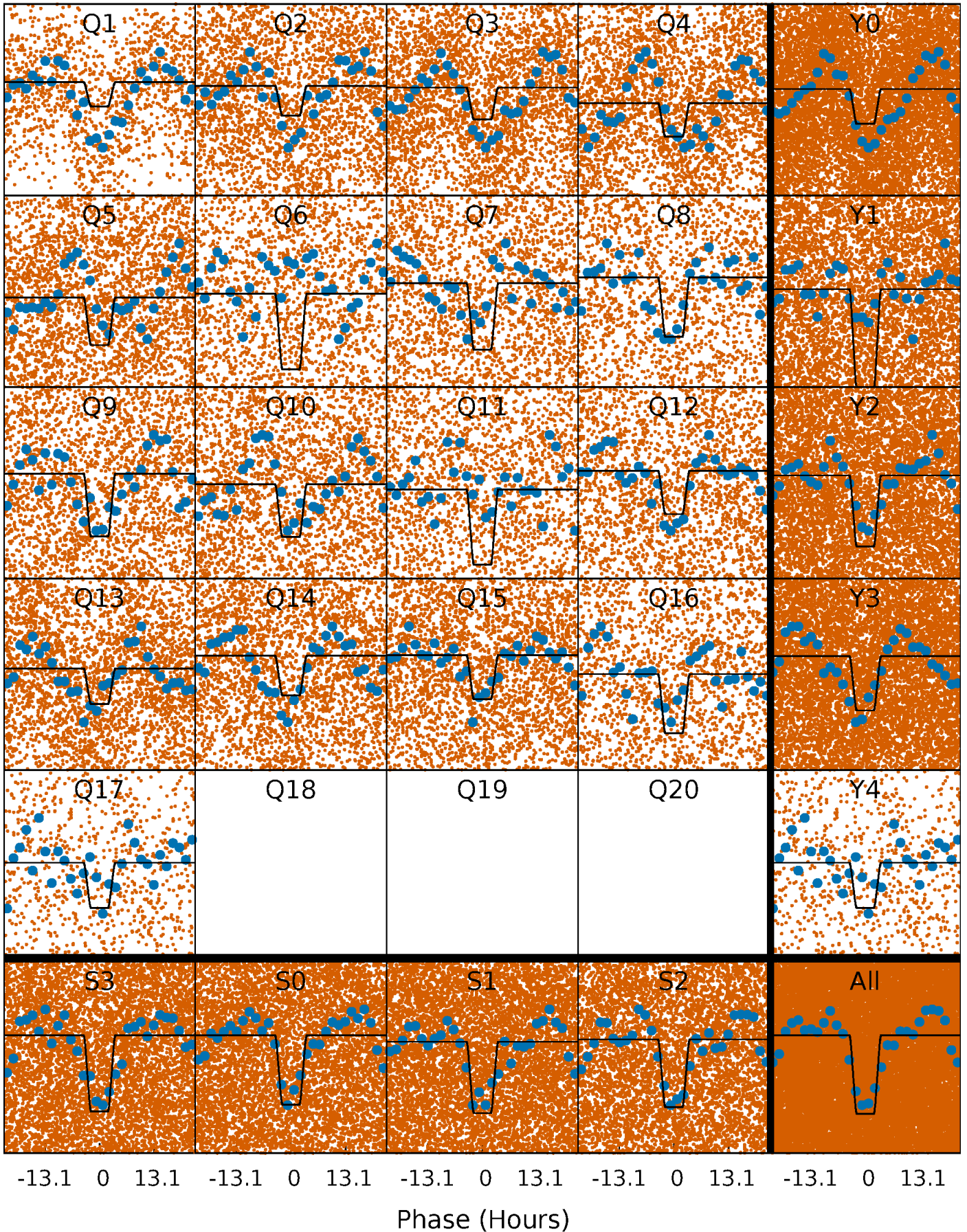
DV Quarter-Phased Transit Curves

TCE 003935200-01 P= 2.002136 Days $T_0=131.715158$ (BKJD)



Alt. Detrend Quarter-Phased Transit Curves

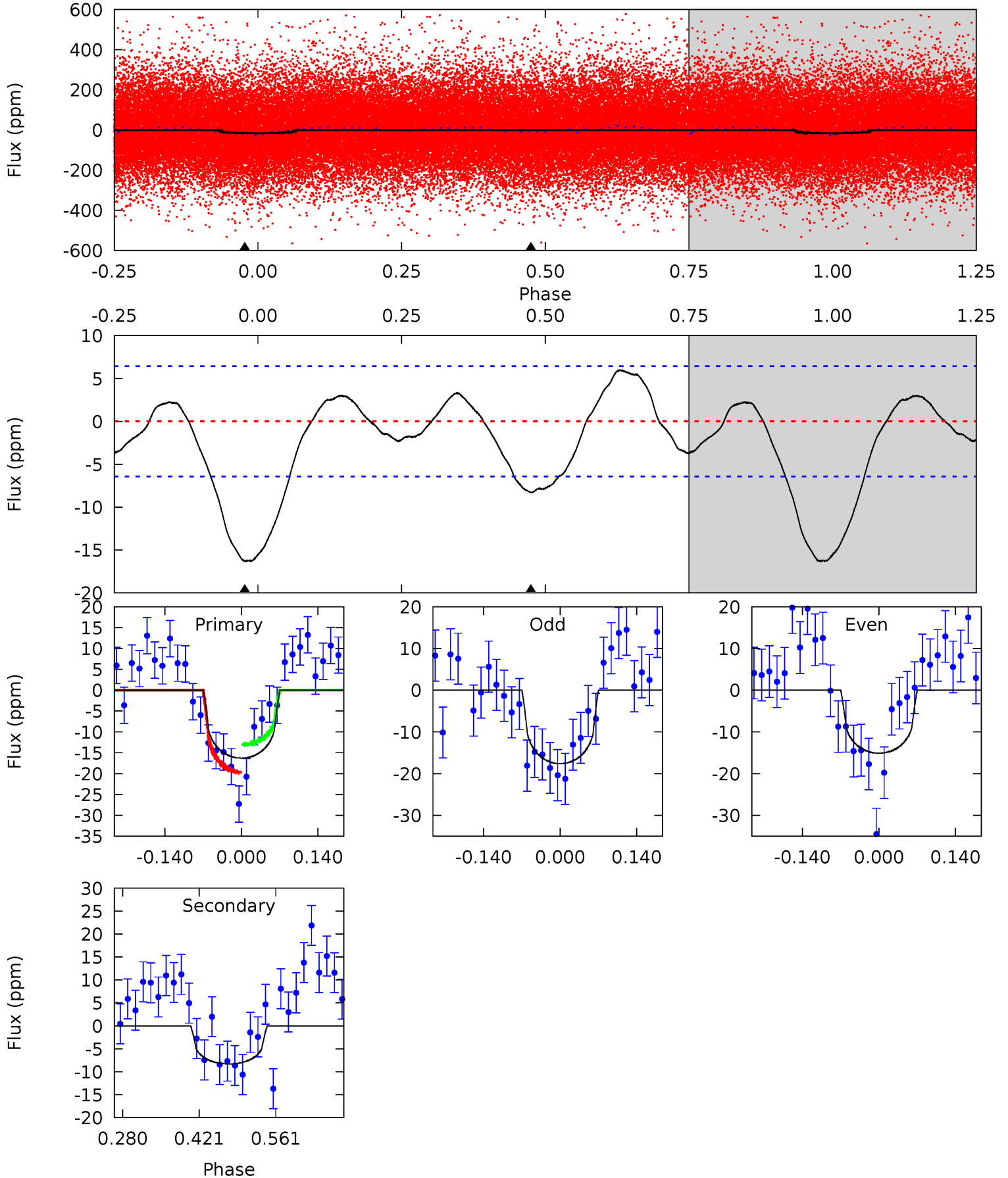
TCE 003935200-01 P= 2.002207 Days $T_0=131.693750$ (BKJD)



DV Model-Shift Uniqueness Test

003935200-01, P = 2.002136 Days, E = 129.713022 Days

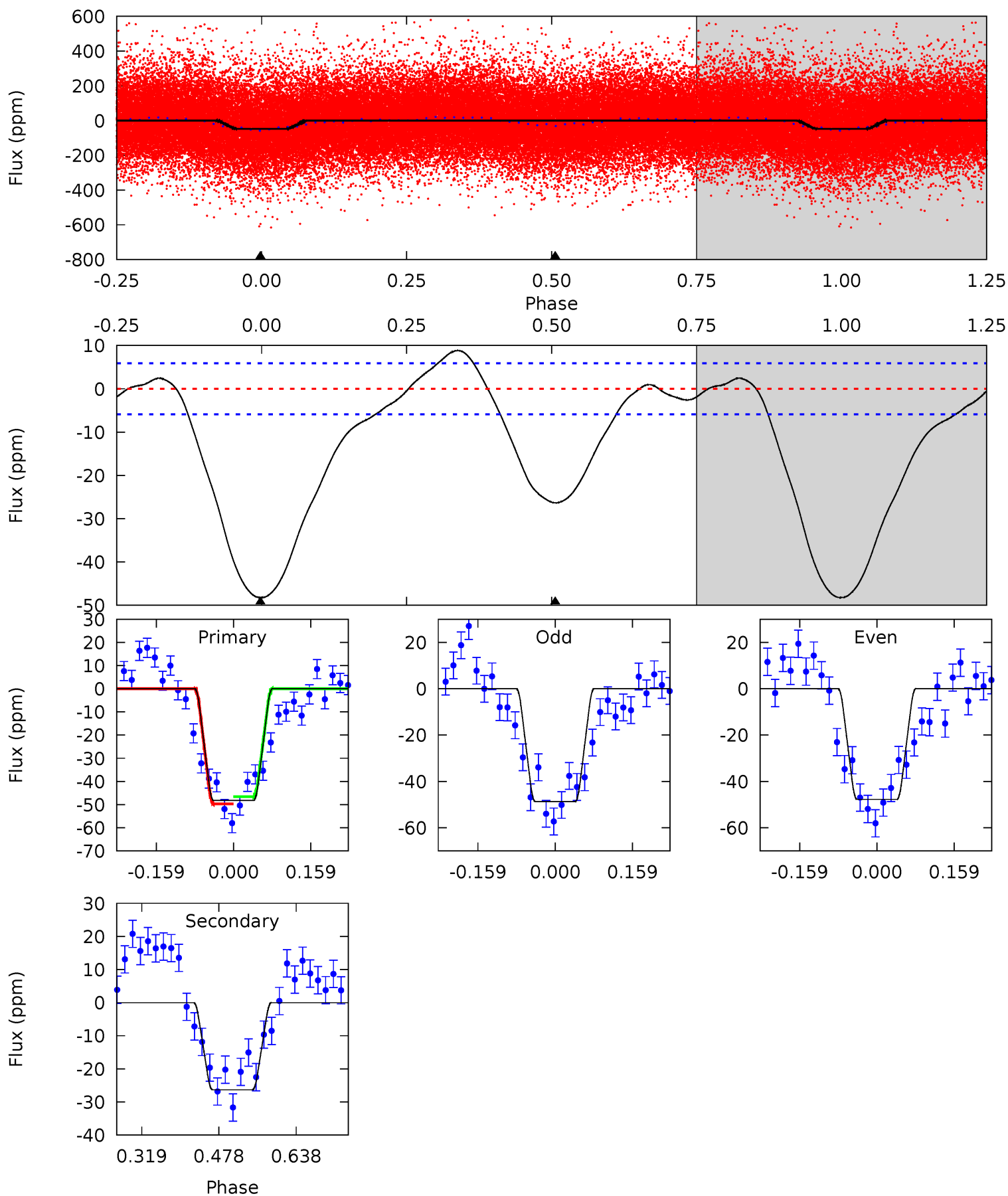
Pri	Sec	Ter	Pos	FA ₁	FA ₂	F _{Red}	Pri-Ter	Pri-Pos	Sec-Ter	Sec-Pos	Odd-Evn	DMM	Shape	TAT
11.4	5.80	0	0	4.49	1.48	1.91	11.4	11.4	5.80	5.80	0.88	1.12	0.27	2.31



Alt Model-Shift Uniqueness Test

003935200-01, P = 2.002207 Days, E = 129.691543 Days

Pri	Sec	Ter	Pos	FA ₁	FA ₂	F _{Red}	Pri-Ter	Pri-Pos	Sec-Ter	Sec-Pos	Odd-Evn	DMM	Shape	TAT
36.6	20.0	0	0	4.47	1.41	3.26	36.6	36.6	20.0	20.0	0.36	1.06	0.15	1.17



Stellar Parameters For KIC 003935200

	$T_{\text{eff}}(K)$	$\log(g)$	[Fe/H]	$R (R_{\odot})$	$M(M_{\odot})$	$p_{\star} (g \cdot \text{cm}^{-3})$
	5229^{+203}_{-166}	$4.540^{+0.060}_{-0.090}$	$-0.100^{+0.300}_{-0.300}$	$0.796^{+0.112}_{-0.081}$	$0.803^{+0.093}_{-0.070}$	$2.239^{+0.561}_{-0.640}$
	+4%/-3%	+1%/-2%	+300%/-300%	+14%/-10%	+12%/-9%	+25%/-29%
Source	KIC0	KIC0	KIC0	DSEP		

KIC = Kepler Input Catalog; PHO = Photometry; SPE = Spectroscopy; AST = Asteroseismology
 TRA = Transits; DESP = Dartmouth Models; MULT = Multiple Models

Secondary Eclipse Parameters for KIC 003935200-01 / KOI

Detrend	Depth (ppm)	$R_p (R_{\oplus})$	$T_{max} (K)$	$T_{obs} (K)$	A_{obs}
DV	-8 ± 1	$0.45^{+0.37}_{-0.29}$	1706^{+84}_{-69}	4158^{+2562}_{-808}	19^{+141}_{-14}
Alt.	-26 ± 1	$0.71^{+0.40}_{-0.38}$	1703^{+87}_{-75}	4387^{+1699}_{-696}	24^{+91}_{-14}

T_{max} = Theoretical Maximum Planetary Temperature

T_{obs} = Observed Planetary Temperature (Assuming $A=0.3$)

A_{obs} = Observed Albedo (Assuming $T=0$)

If a secondary eclipse is present, the system is likely an EB if $T_{obs} \gg T_{max}$ AND $A_{obs} \gg 1.0$

DV Centroid Data

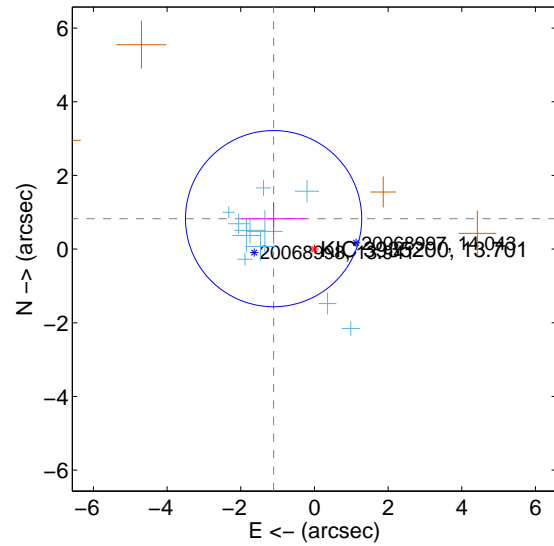
Supplemental centroid analysis for 003935200-01. Kepler magnitude: 13.70. Transit SNR 8.23

There are 11 quarters with good PRF difference image offsets

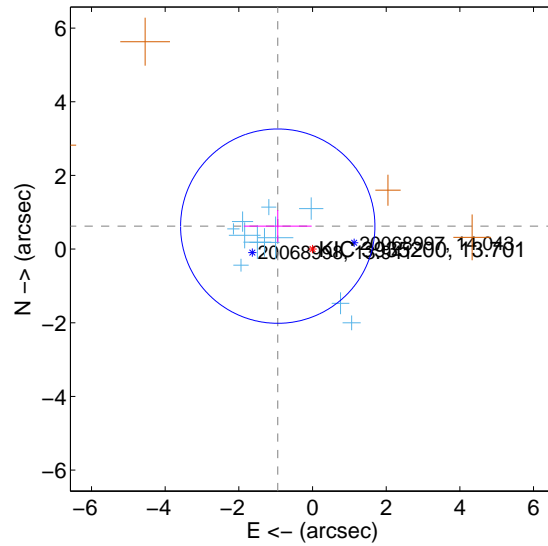
The direct PRF centroid is offset from the target star catalog position by about 0.17 arcsec

	Distance in arcsec	Distance / σ	Δ RA	Δ Dec
PRF-fit source offset from OOT	1.384 ± 0.797	1.74	1.109 ± 0.875	0.827 ± 0.450
PRF-fit source offset from KIC position	1.132 ± 0.879	1.29	0.944 ± 0.921	0.623 ± 0.439
photometric centroid source offset	1.88 ± 1.20	1.56	1.84 ± 1.20	-0.37 ± 1.23

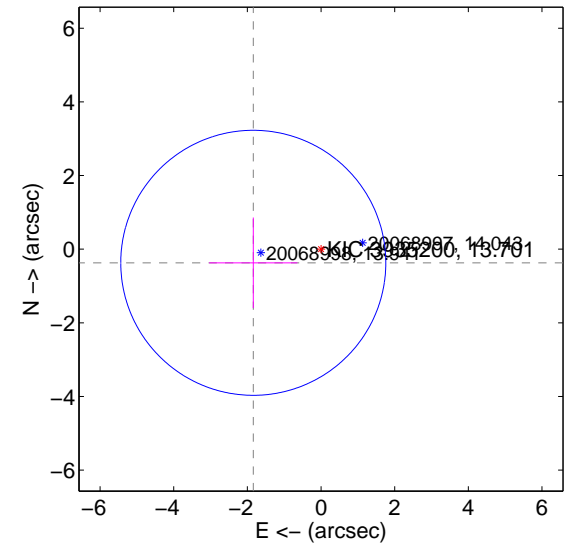
offset from difference PRF-fit to OOT PRF-fit



offset from difference PRF-fit to KIC position

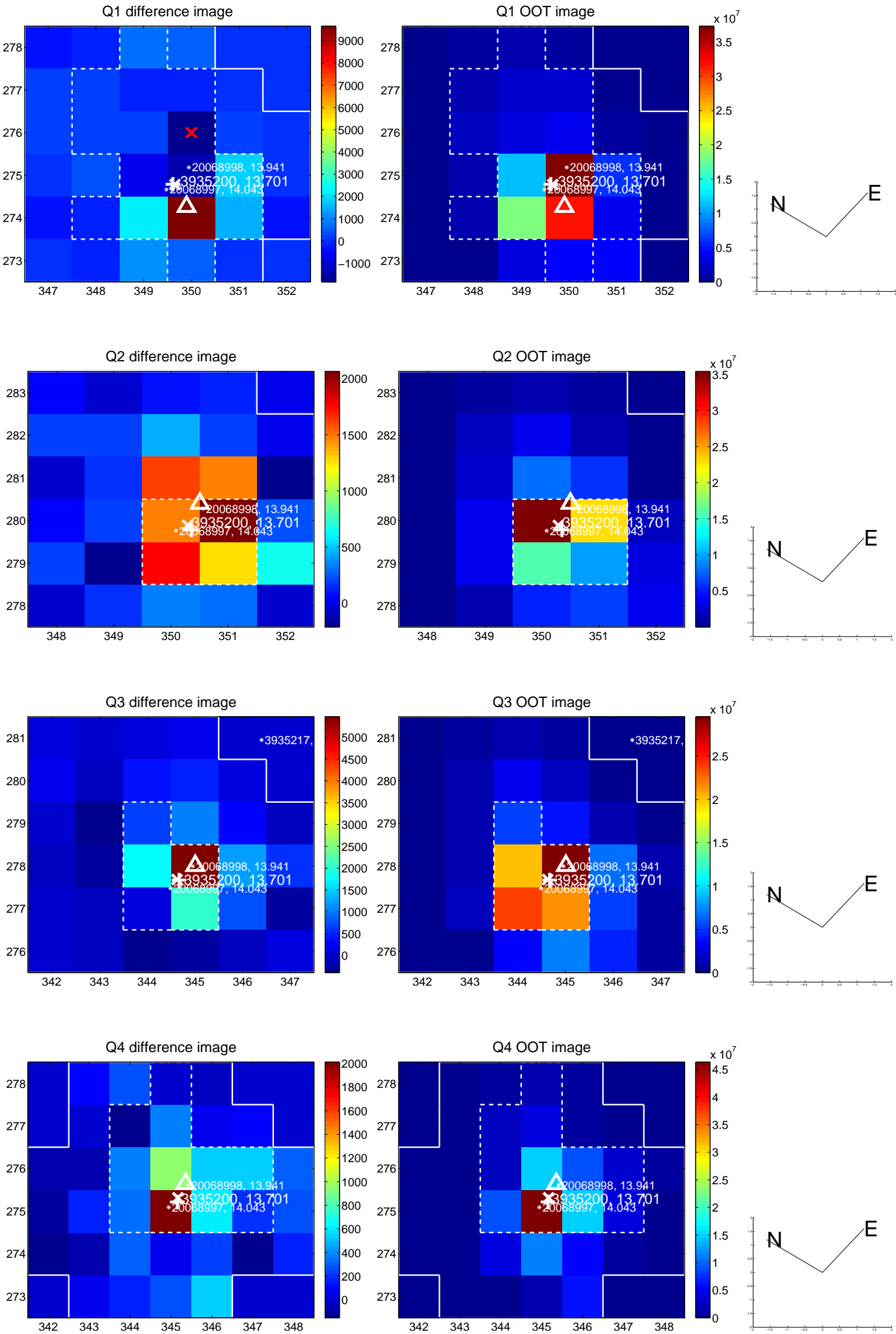


offset from photometric centroids

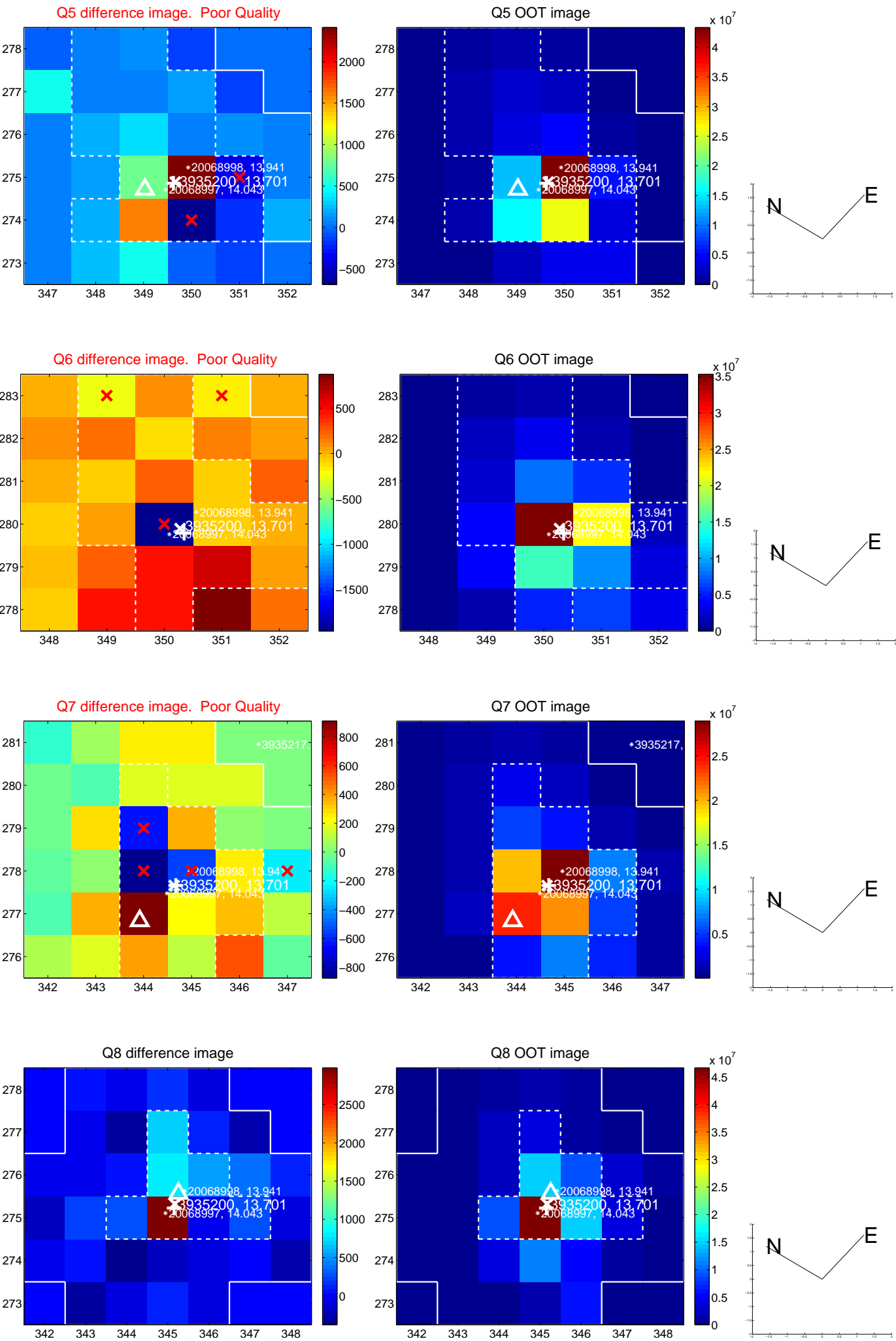


Centroid source offsets from the target star reconstructed from PRF and photometric centroids. **Sky blue crosses: good quarterly centroid offsets; Vermillion crosses: bad quarterly centroid offsets**; magenta cross: average over quarters. Length of the crosses: one- σ uncertainty. Blue circle: three- σ . Red *: target star. Blue *: Other stars. Text next to a star gives its KIC ID and kepmag. KIC IDs > 15,000,000 are from the UKIRT catalog.

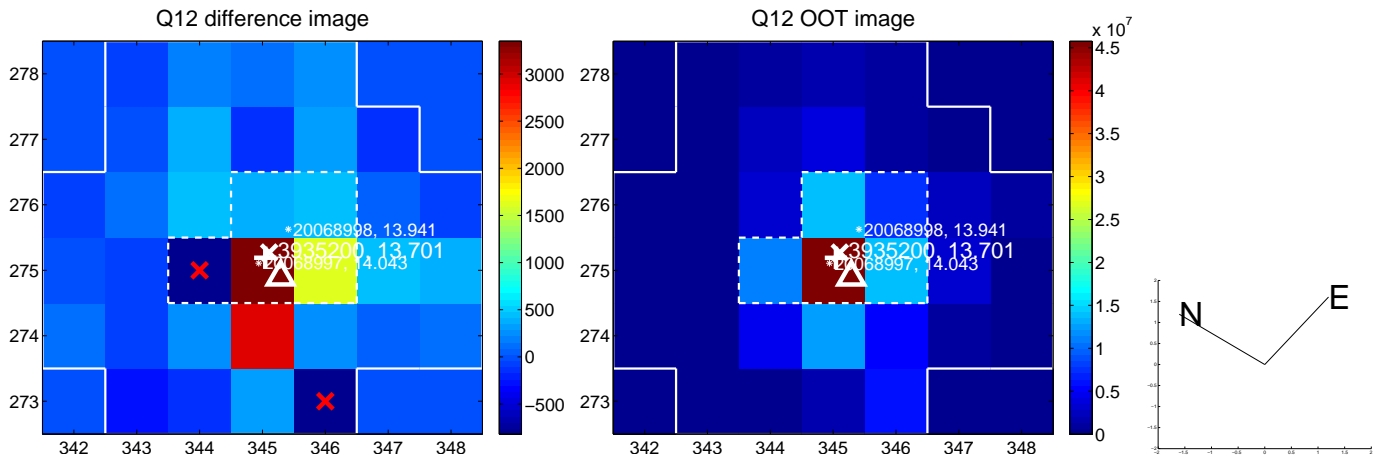
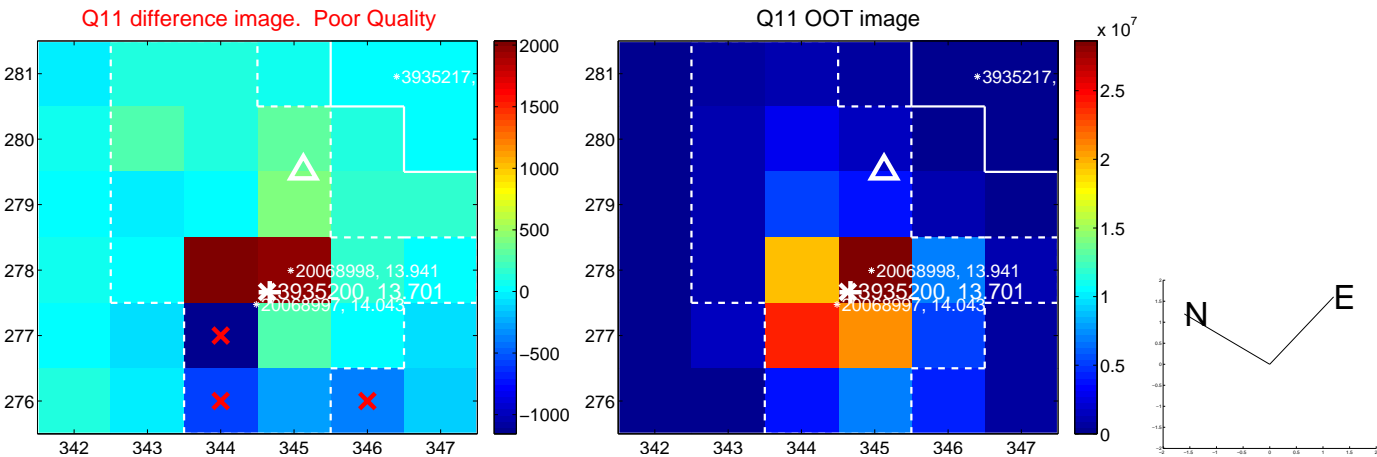
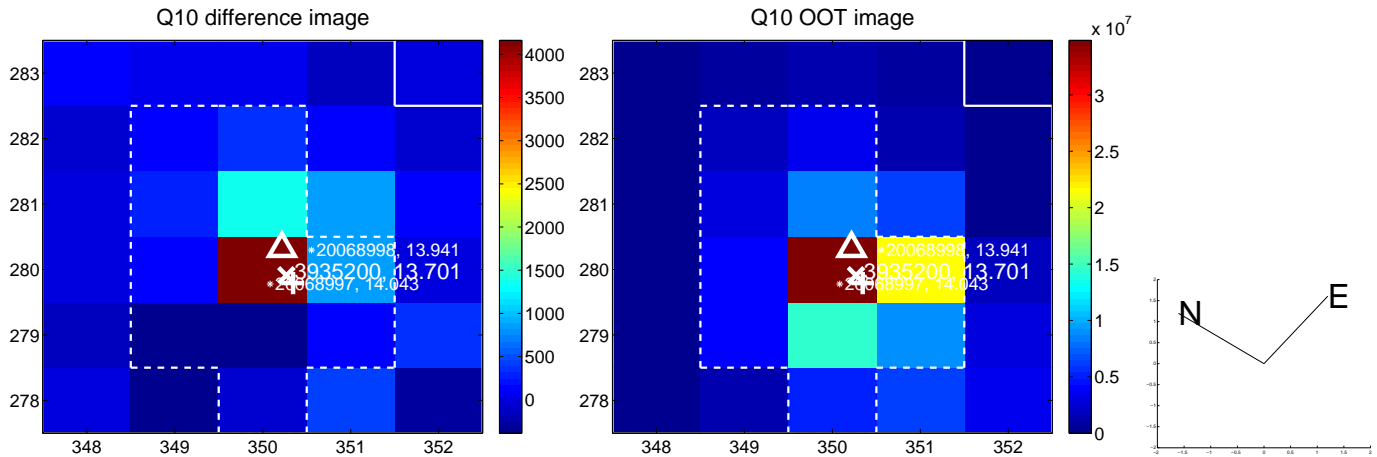
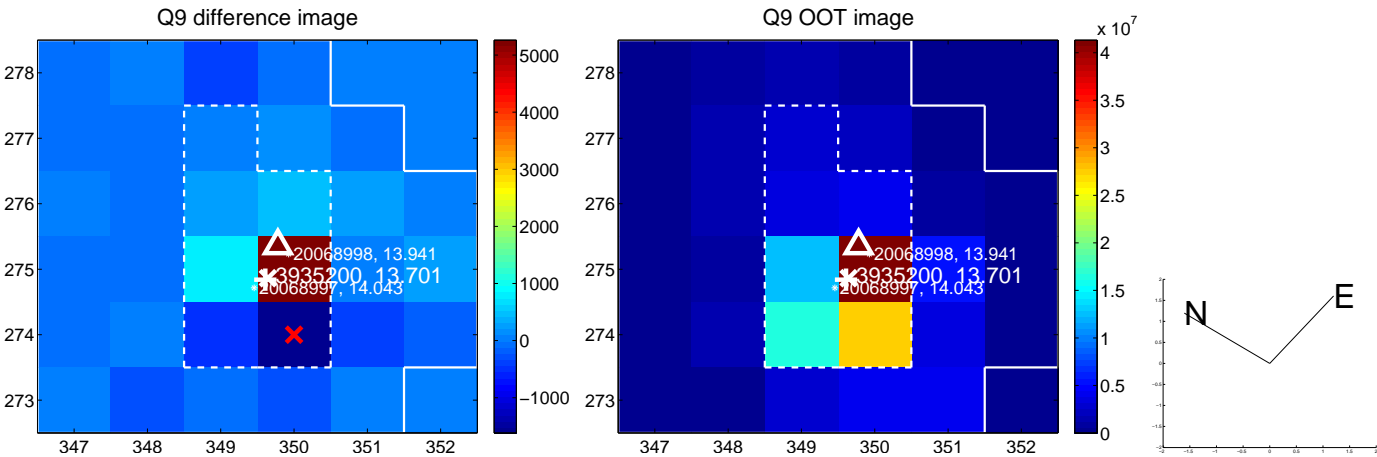
white \times : KIC target position; +: OOT centroid; \triangle : difference centroid. red \times : large negative pixel value.



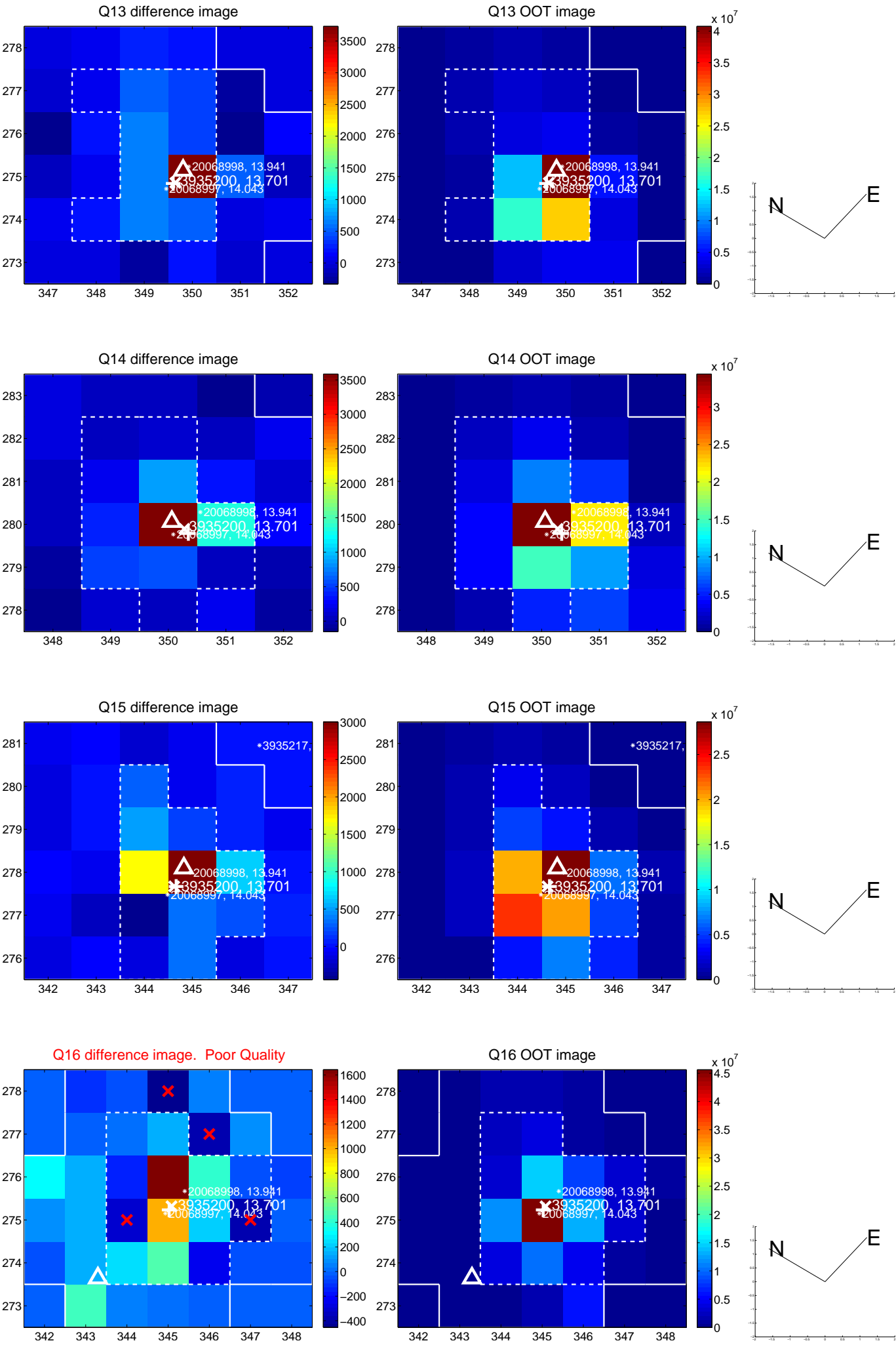
white \times : KIC target position; +: OOT centroid; \triangle : difference centroid. red \times : large negative pixel value.



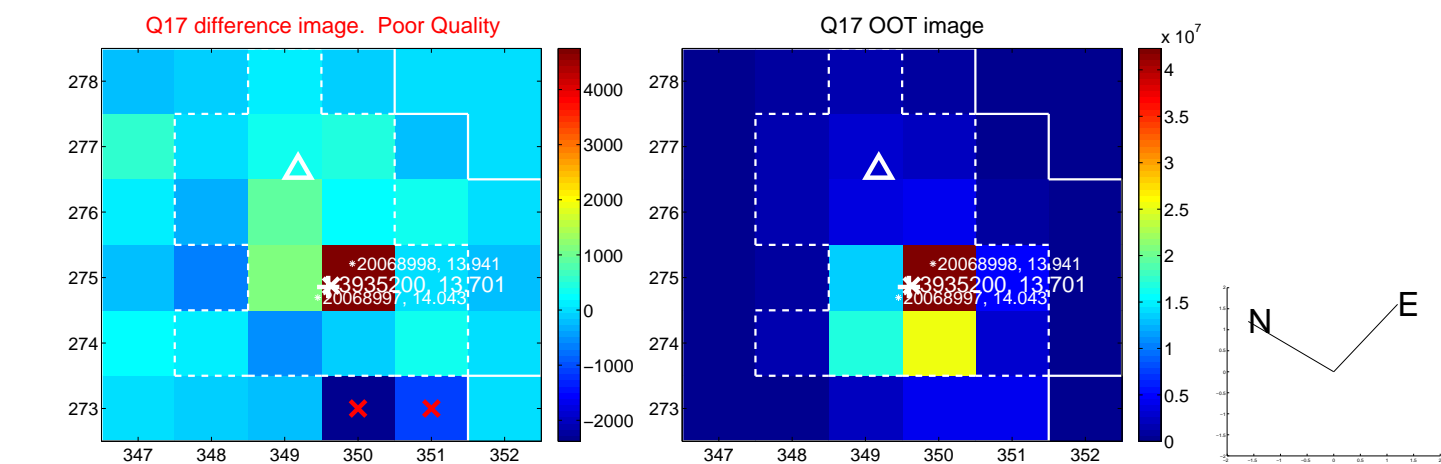
white \times : KIC target position; +: OOT centroid; \triangle : difference centroid. red \times : large negative pixel value.



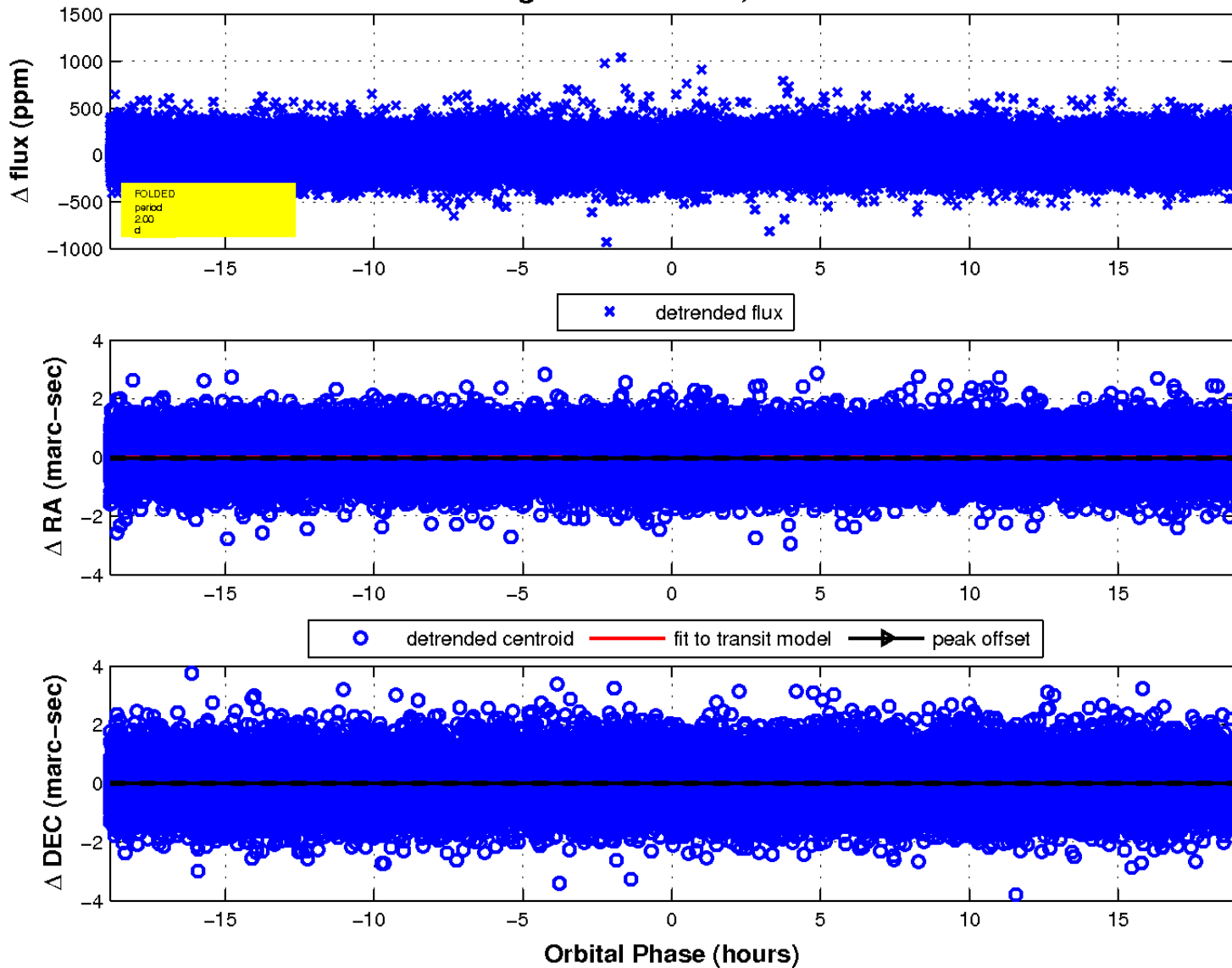
white \times : KIC target position; +: OOT centroid; \triangle : difference centroid. red \times : large negative pixel value.



white \times : KIC target position; $+$: OOT centroid; \triangle : difference centroid. red \times : large negative pixel value.



fluxWeightedCentroids, Planet 1 of 1



UKIRT Image

Declination

