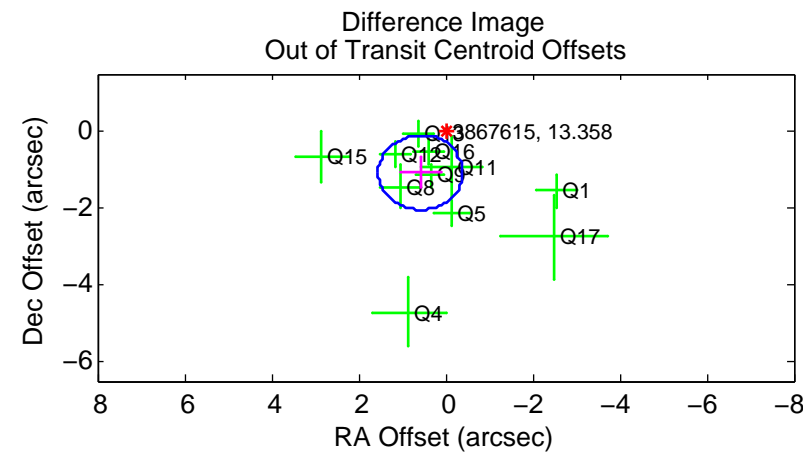
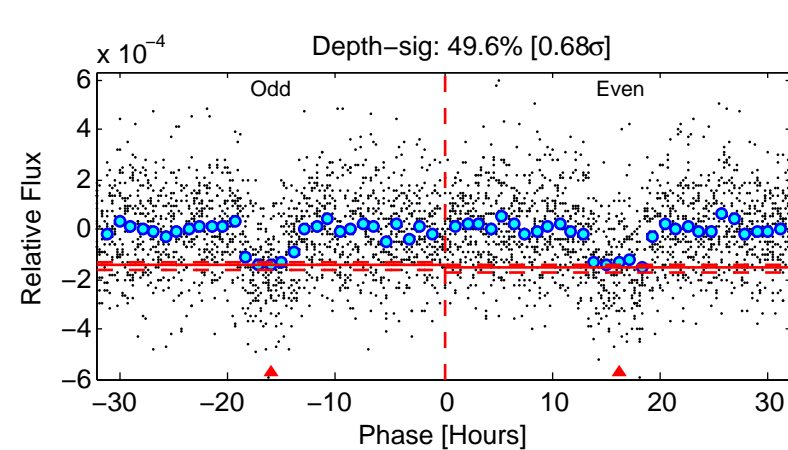
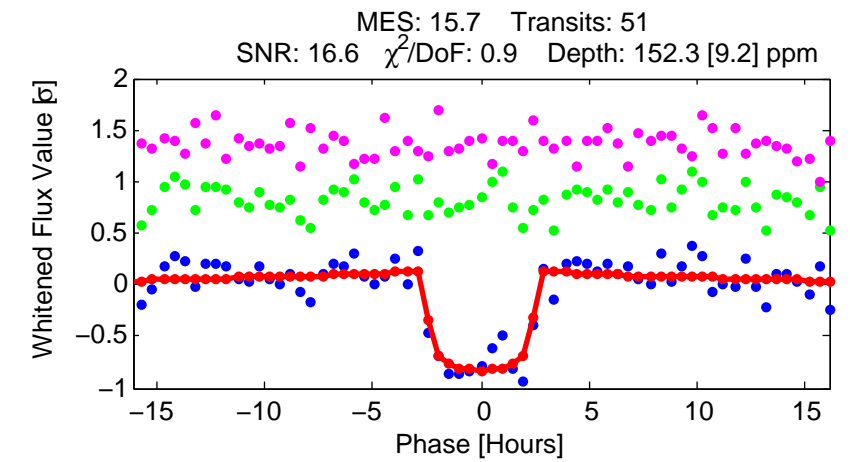
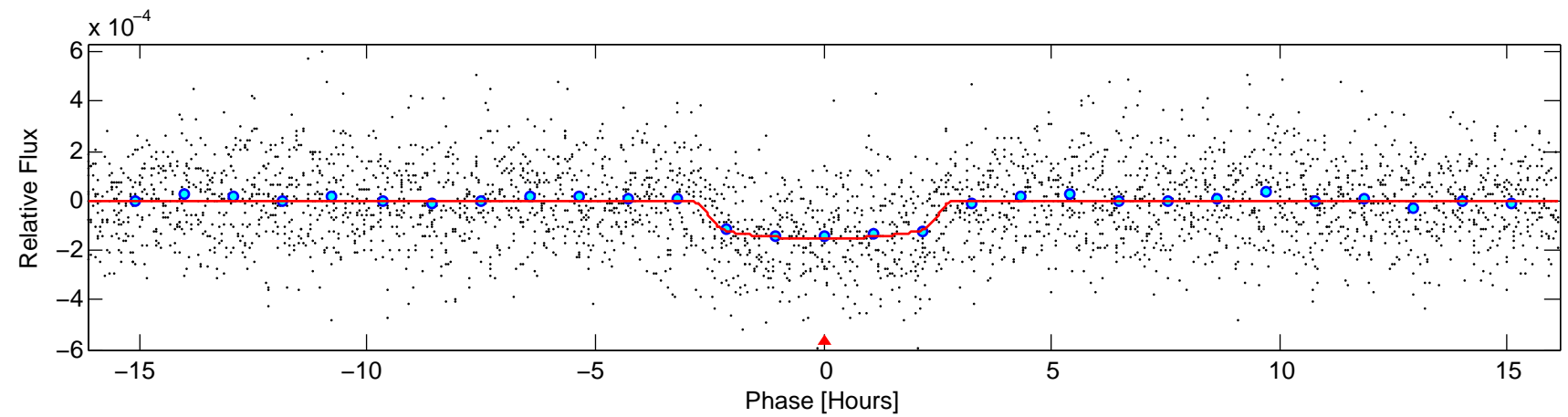
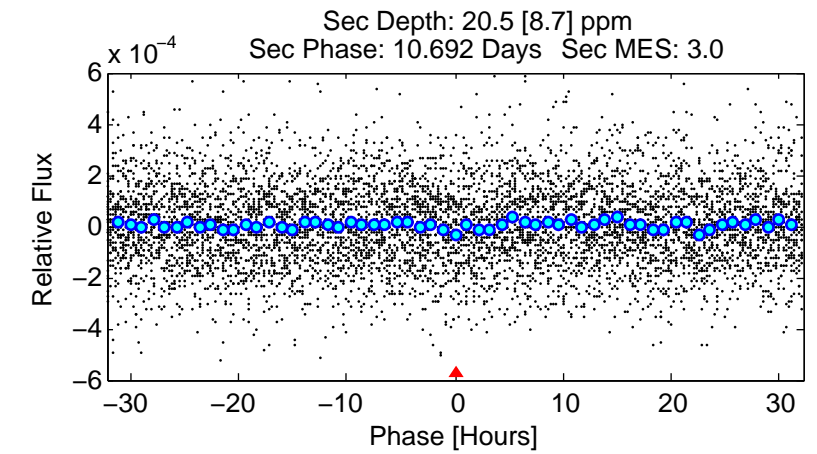
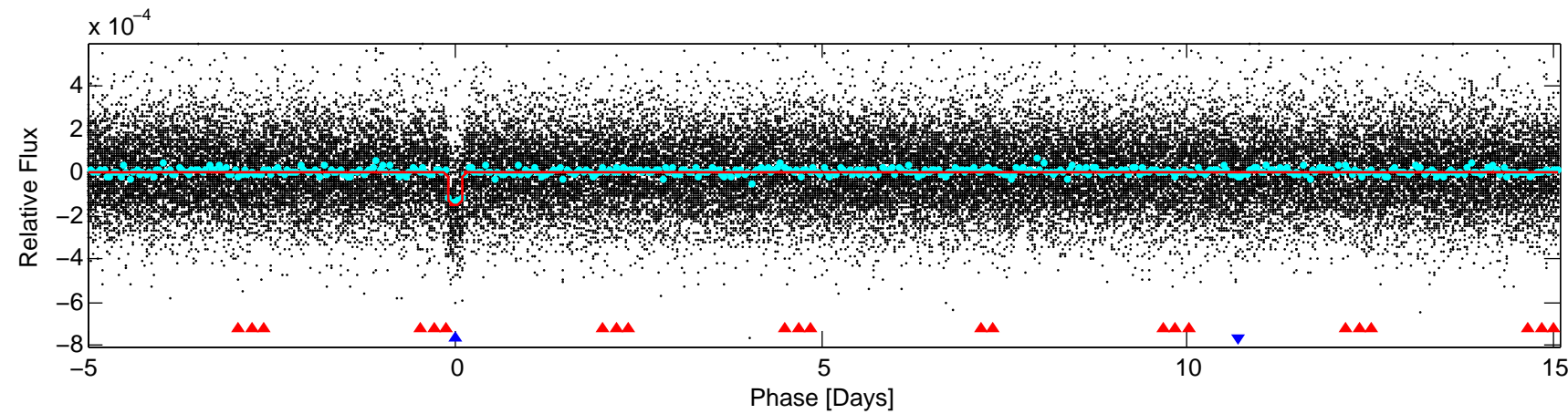
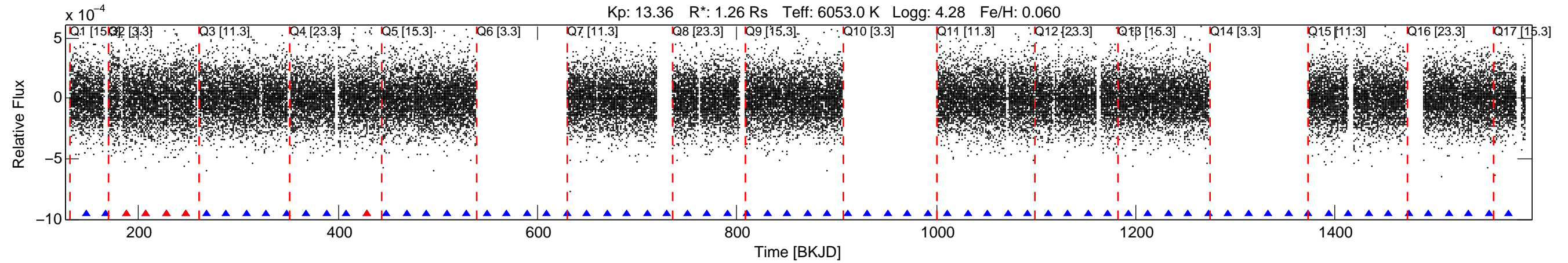


KIC: 3867615 Candidate: 2 of 2 Period: 20.098 d
 KOI: K02289.02 Name: Kepler-379b Corr: 0.981



DV Fit Results:

Period = 20.09837 [0.00014] d
 Epoch = 147.2829 [0.0056] BKJD
 Rp/R* = 0.0131 [0.0031]
 a/R* = 14.44 [17.17]
 b = 0.88 [0.32]
 Seff = 85.53 [20.03]
 Teq = 775 [45] K
 Rp = 1.80 [0.53] Re
 a = 0.1494 [0.0220] AU
 Ag = 77.44 [52.39] [1.46σ]
 Teffp = 3557 [575] K [4.82σ]

DV Diagnostic Results:

ShortPeriod-sig: N/A
 LongPeriod-sig: 100.0% [138.11σ]
 ModelChiSquare2-sig: 95.0%
 ModelChiSquareGof-sig: 100.0%
 Bootstrap-pfa: 2.80e-52
 RollingBand-fgt: 0.90 [44/49]
 GhostDiagnostic-chr: 9.205
 Centroid-sig: 0.8%
 Centroid-so: 1.898 arcsec [2.30σ]
 OotOffset-rm: 1.219 arcsec [3.77σ]
 KicOffset-rm: 1.190 arcsec [3.02σ]
 OotOffset-st: 0/2/4/5 [11]
 KicOffset-st: 0/2/4/5 [11]
 DiffImageQuality-fgm: 0.73 [8/11]
 DiffImageOverlap-fno: 1.00 [14/14]