

KIC 003658906

Q1-17 DR25 TCE Parameters

TCE	Run Type	KOI?	Period (Days)	Epoch (BKJD)	Depth (ppm)	Duration (Hours)	MES	SNR	R_{\star} (R_{\odot})	T_{\star} (K)	R_p (R_{\oplus})	S_p (S_{\oplus})
003658906-01	OBS	No	2.165021	131.940099	129.6	7.500	9.9	-1.0	4.39	6478	5.03	18439.58

Robovetter Results

TCE	Run Type	Disp	Score	N	S	C	E	Comments
003658906-01	OBS	FP	0.00	1	0	0	0	LPP_DV—CENT_NOFITS

Notes: OBS = Observed. INJ = Injected. INV = Inverted. SCR = Scrambled.

N = Not Transit-Like. S = Stellar Eclipse. C = Centroid Offset. E = Ephemeris Match.

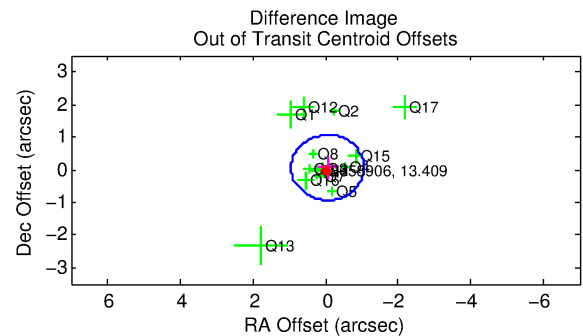
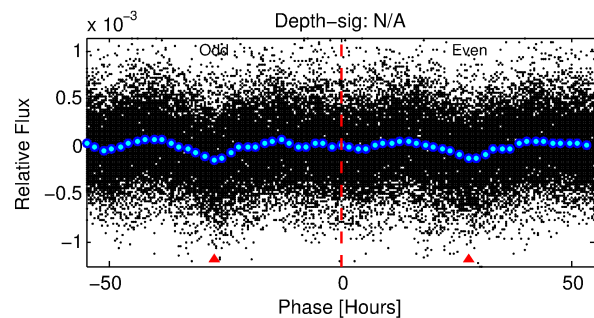
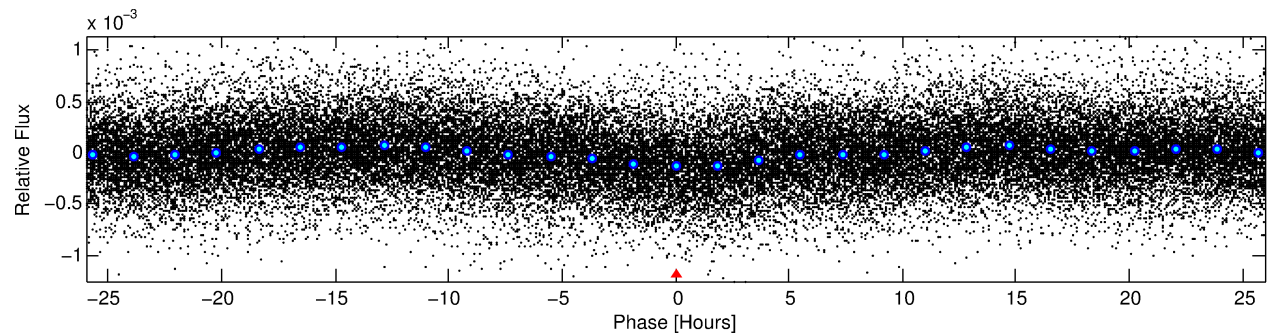
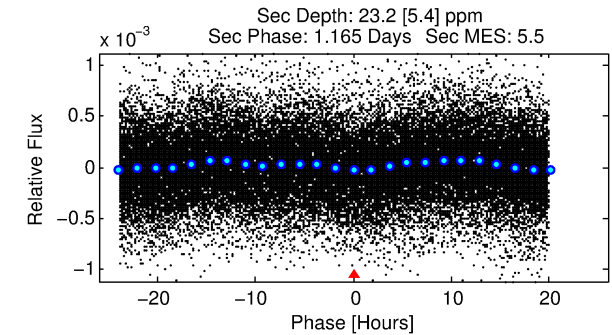
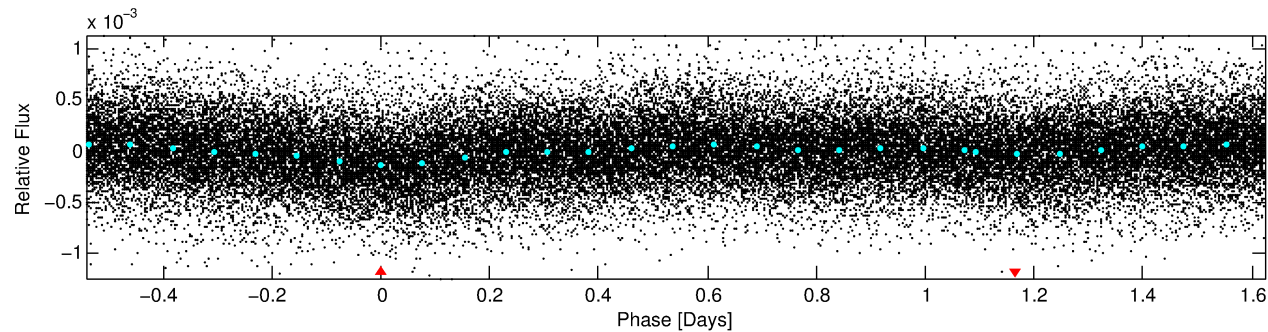
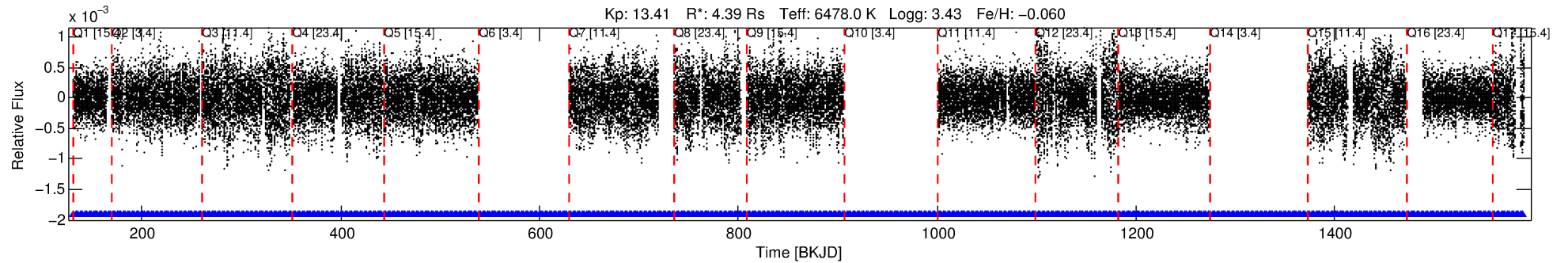
See http://exoplanetarchive.ipac.caltech.edu/docs/API_kepcandidate_columns.html#proj_disp_col for comment definitions.

Ephemeris Match Information For 003658906-01

No Significant Match Found

DV One-Page Summary

KIC: 3658906 Candidate: 1 of 1 Period: 2.165 d



TPS TCE Results:

Period = 2.16502 d
Epoch = 131.9401 BKJD

DV fit results are unavailable

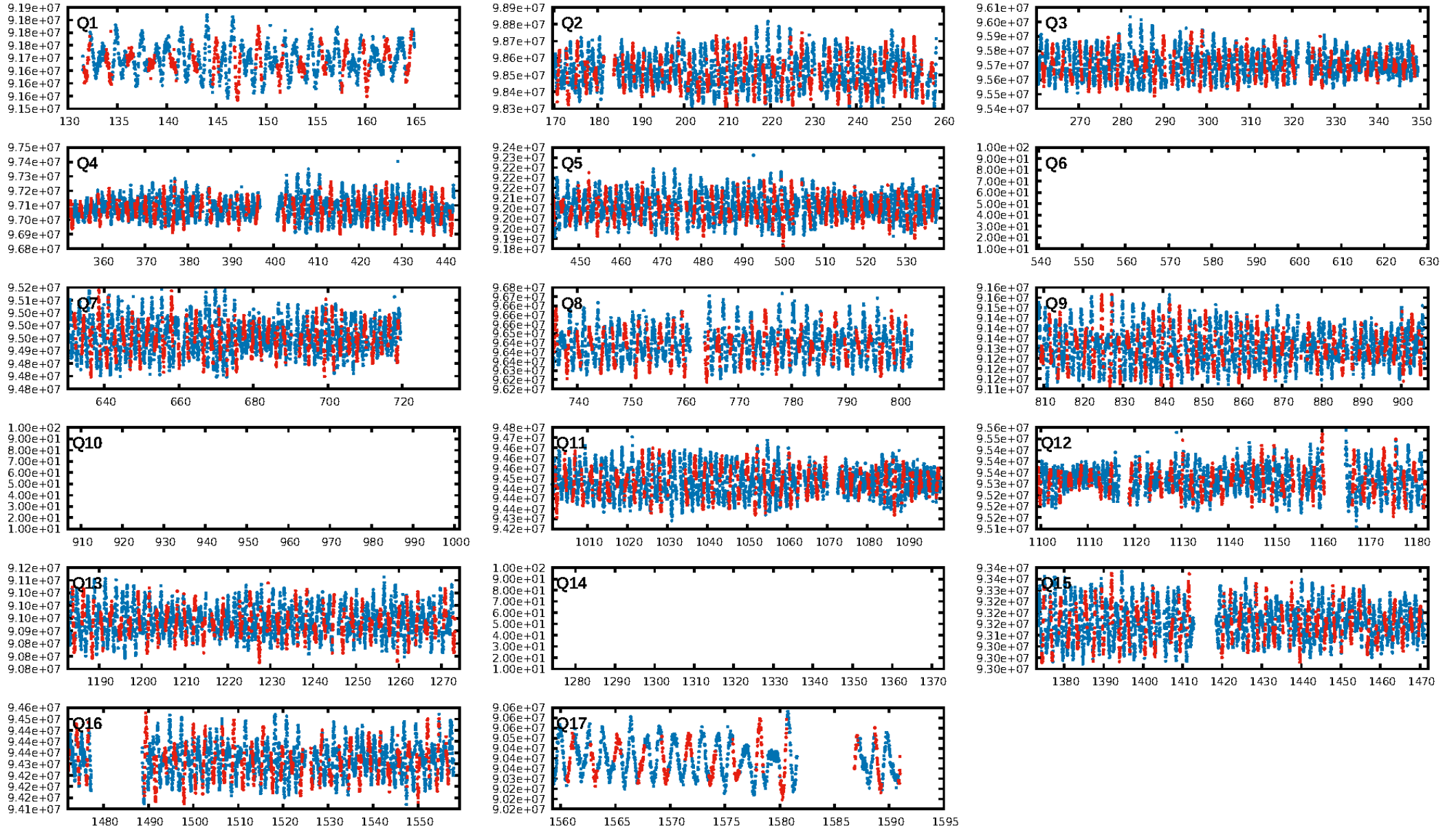
DV Diagnostic Results:

ShortPeriod-sig: N/A
LongPeriod-sig: N/A
ModelChiSquare2-sig: N/A
ModelChiSquareGof-sig: N/A
Bootstrap-pfa: 8.81e-19
RollingBand-fgt: 1.00 [471/471]
GhostDiagnostic-chr: N/A
Centroid-sig: N/A
Centroid-so: N/A
OotOffset-rm: 0.087 arcsec [0.26σ]
KicOffset-rm: 0.197 arcsec [0.60σ]
OotOffset-st: 1/4/4/5 [14]
KicOffset-st: 1/4/4/5 [14]
DiffImageQuality-fgm: 0.86 [12/14]
DiffImageOverlap-fno: 1.00 [14/14]

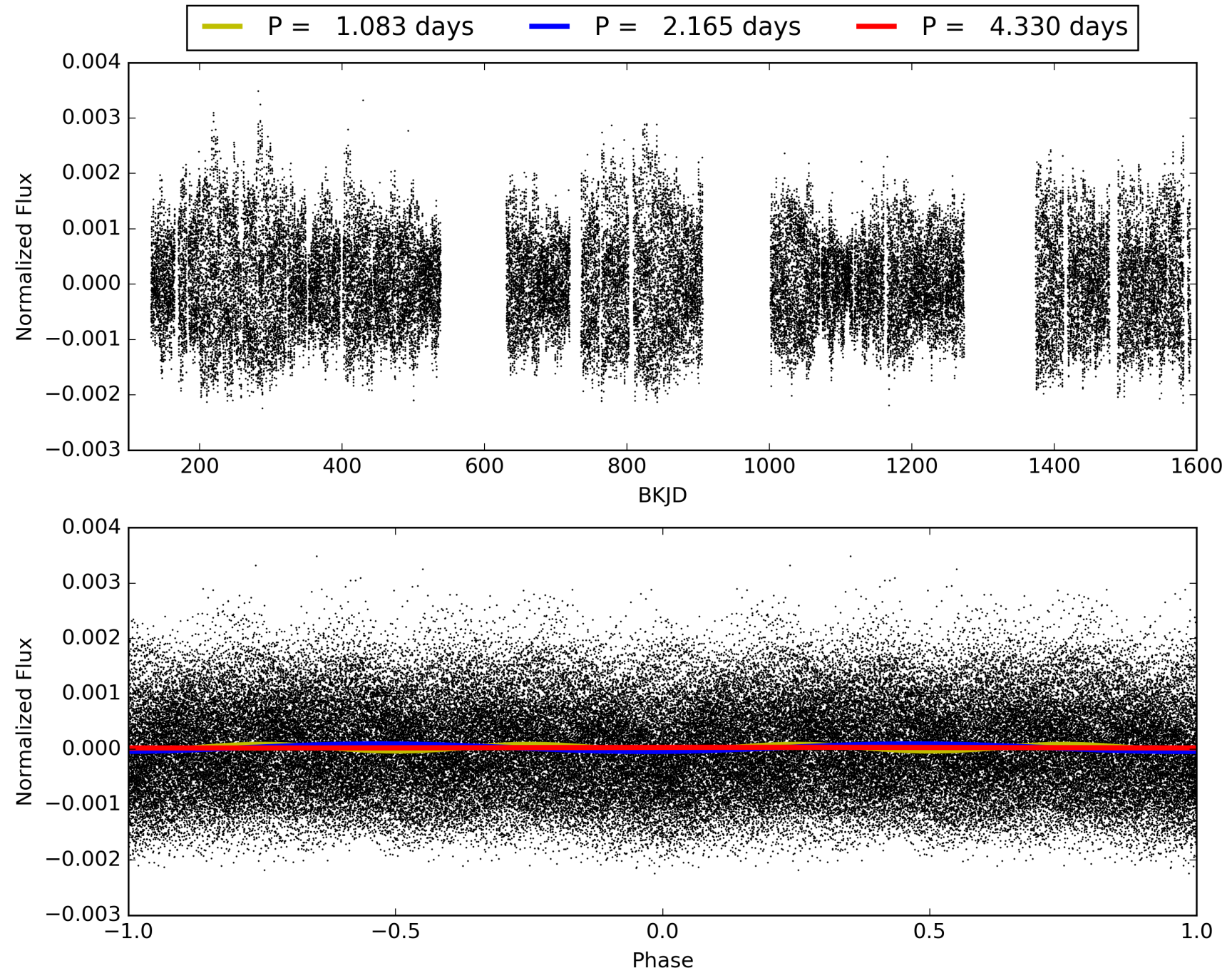
Software Revision: svn+ssh://murzim/repo/soc/tags/release/9.3.42@60958 -- Date Generated: 30-Jan-2016 09:00:47 Z

This Data Validation Report Summary was produced in the Kepler Science Operations Center Pipeline at NASA Ames Research Center

TCE 003658906-01, PDC Light Curves

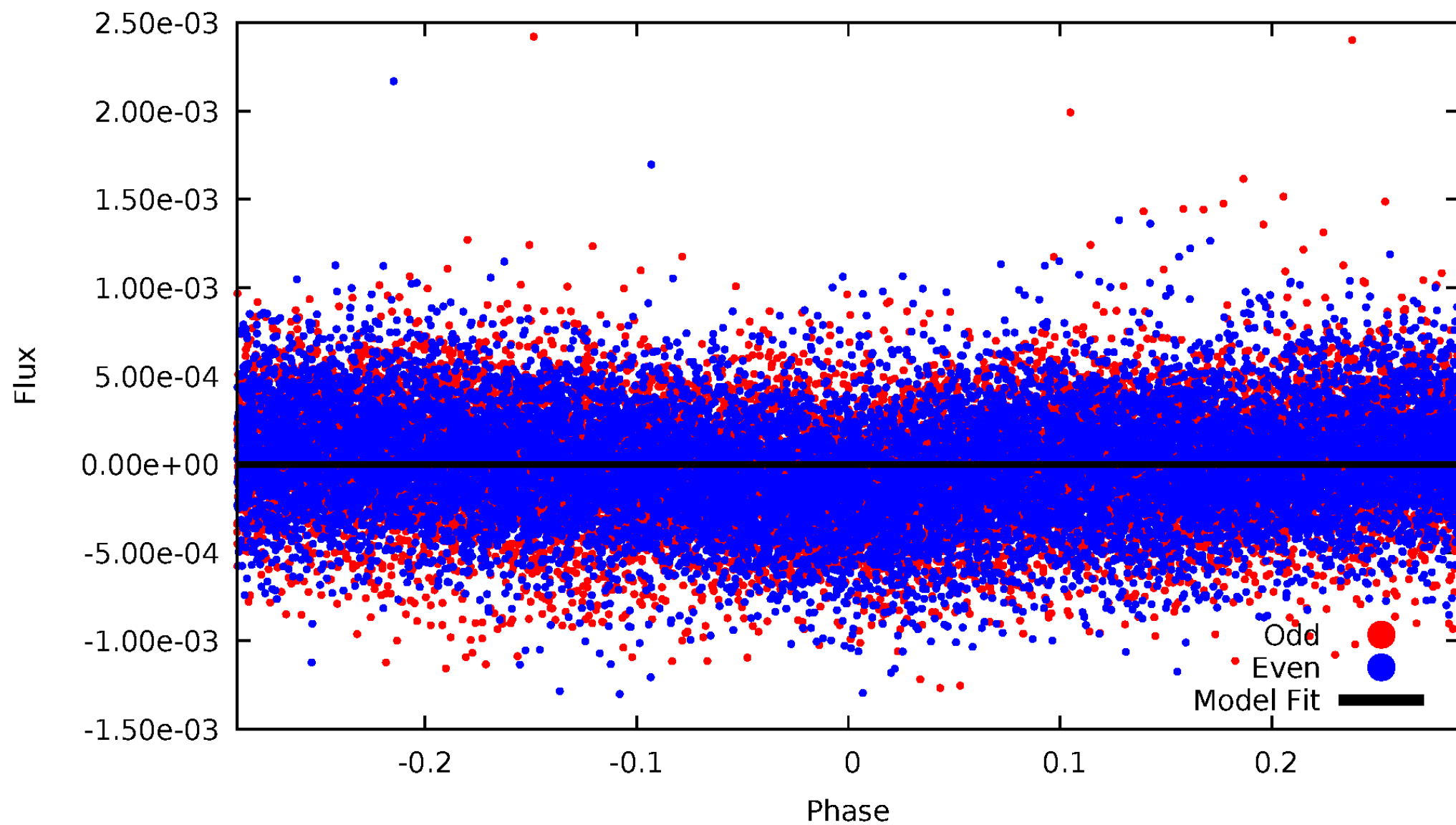


TCE 003658906-01



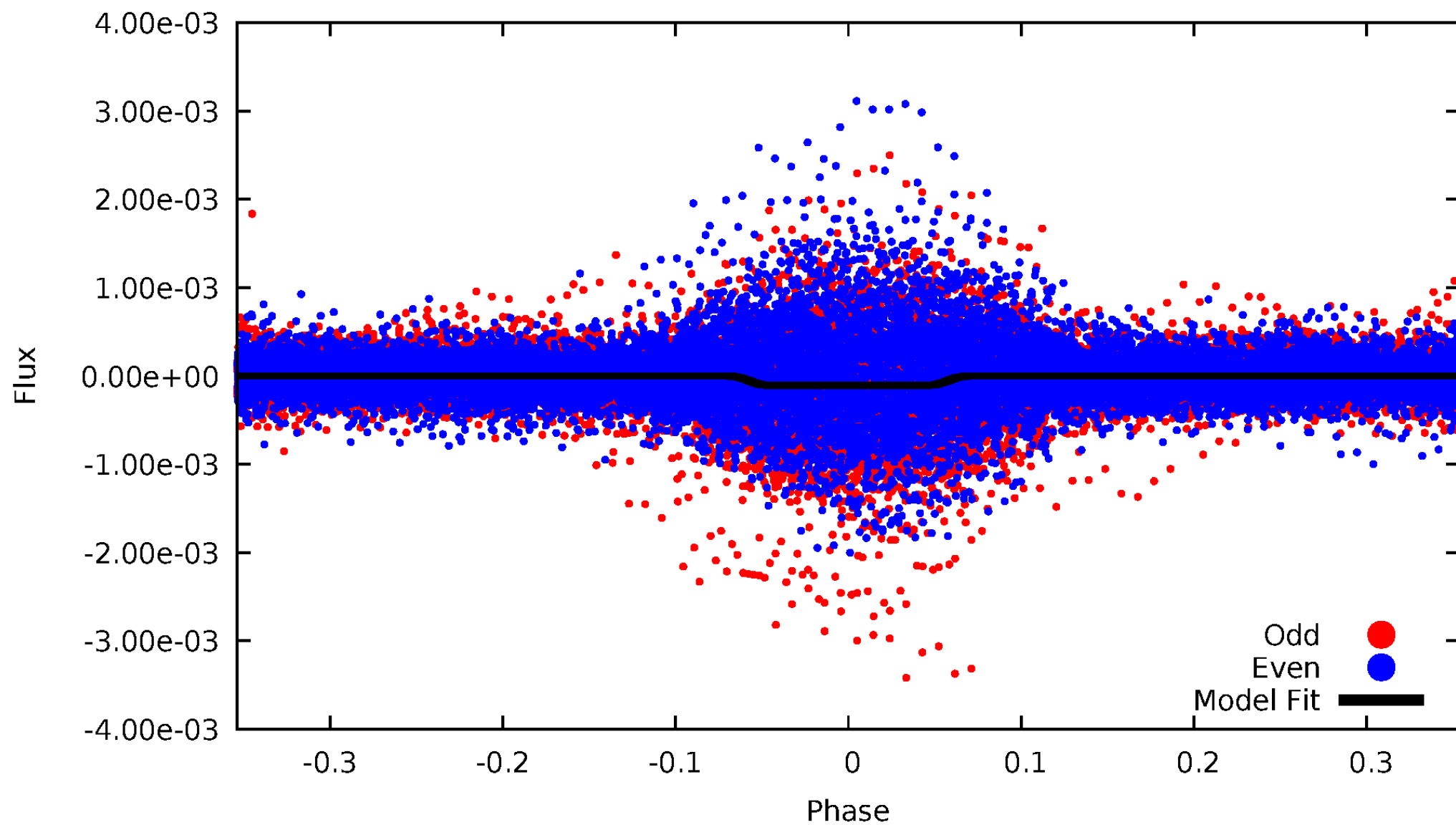
DV Odd/Even

TCE 003658906-01

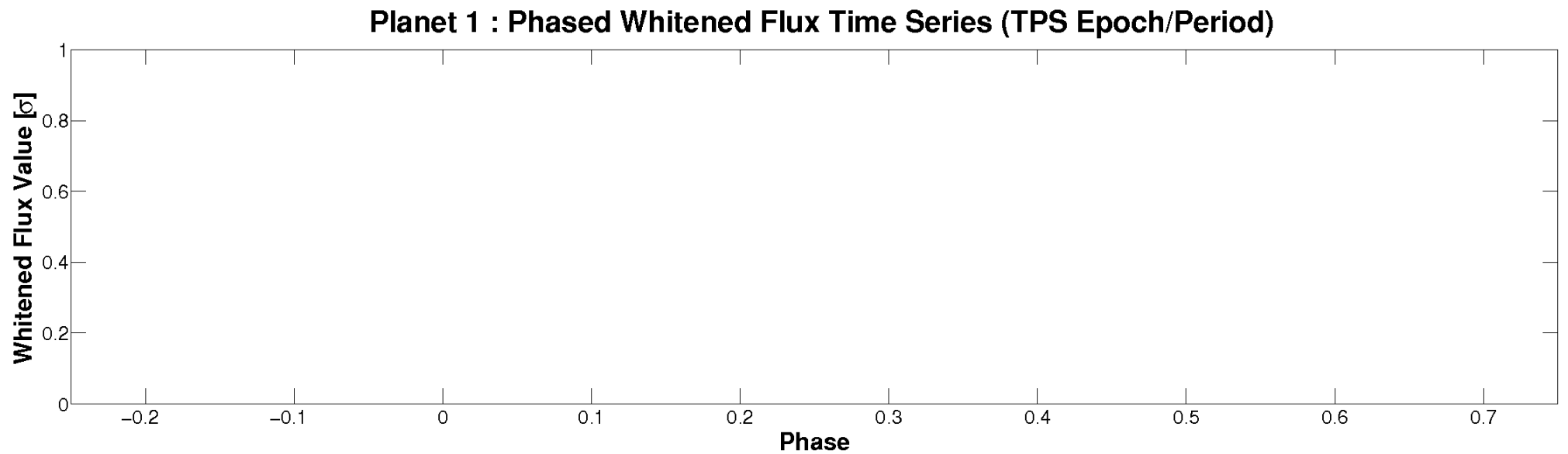
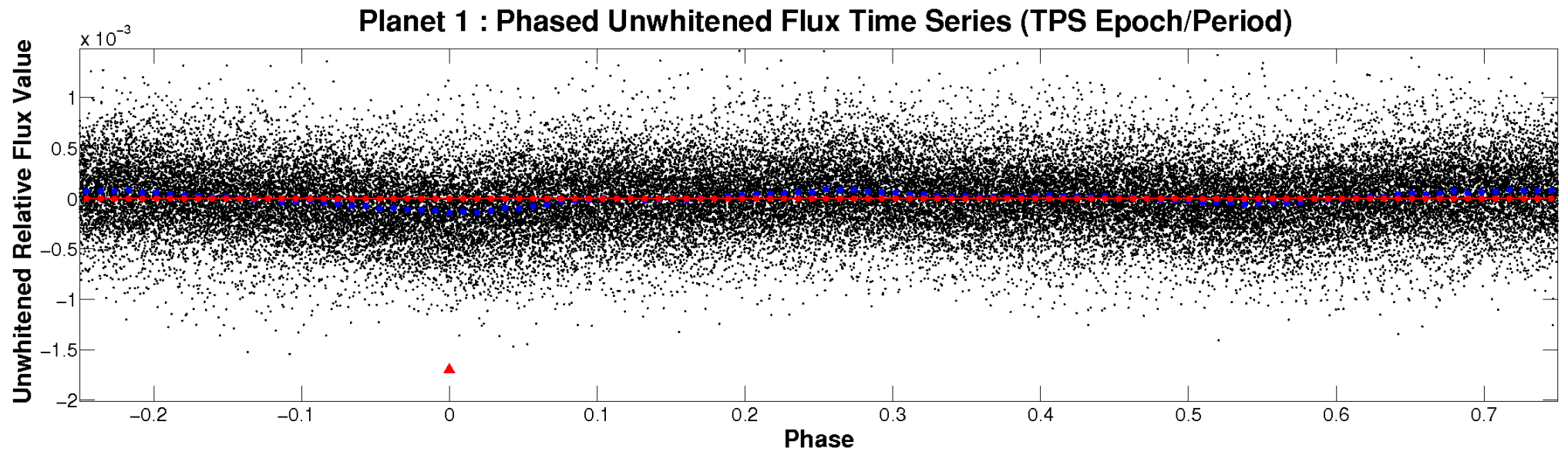


ALT Odd/Even

TCE 003658906-01

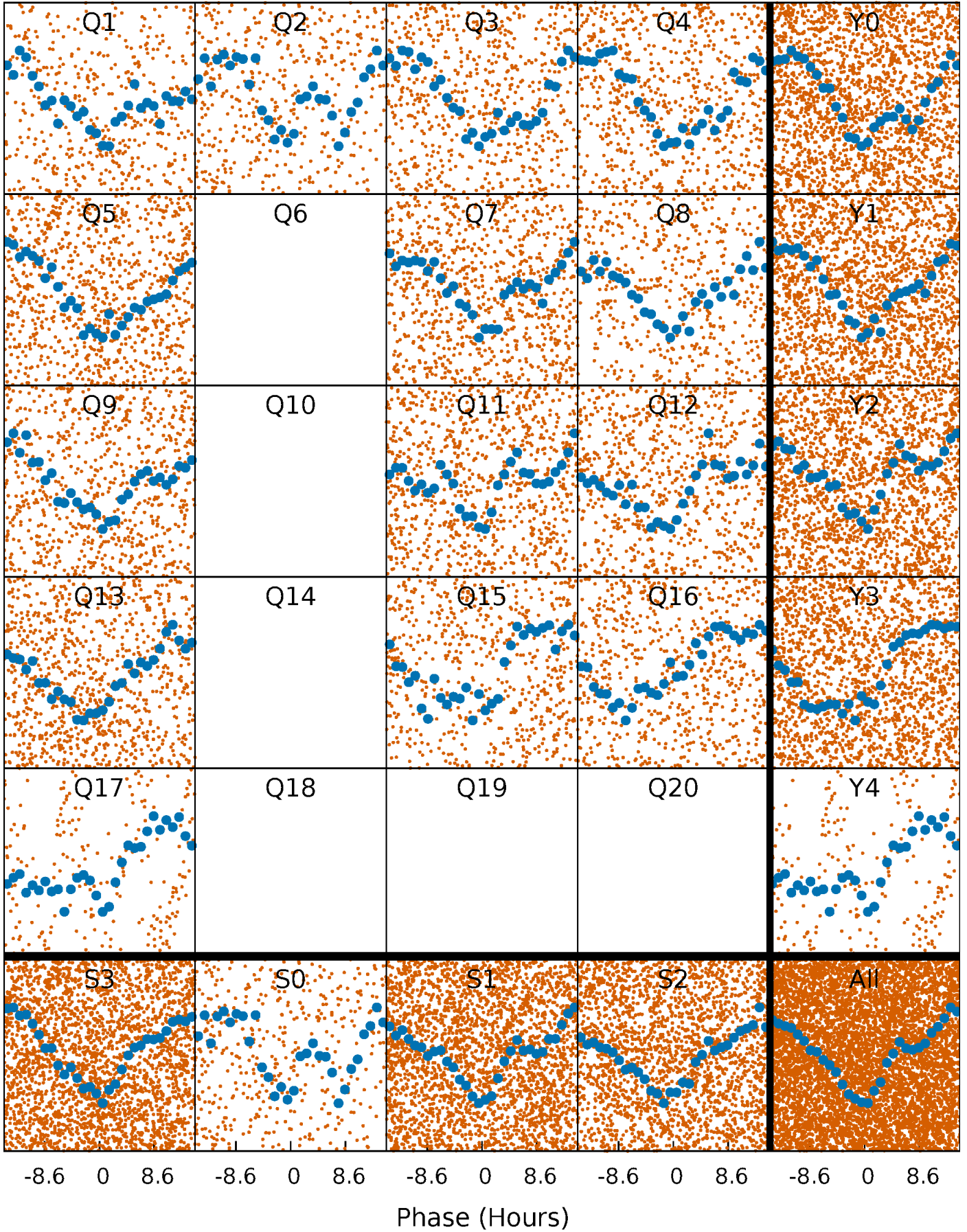


Non-Whitened Vs. Whitened Light Curve



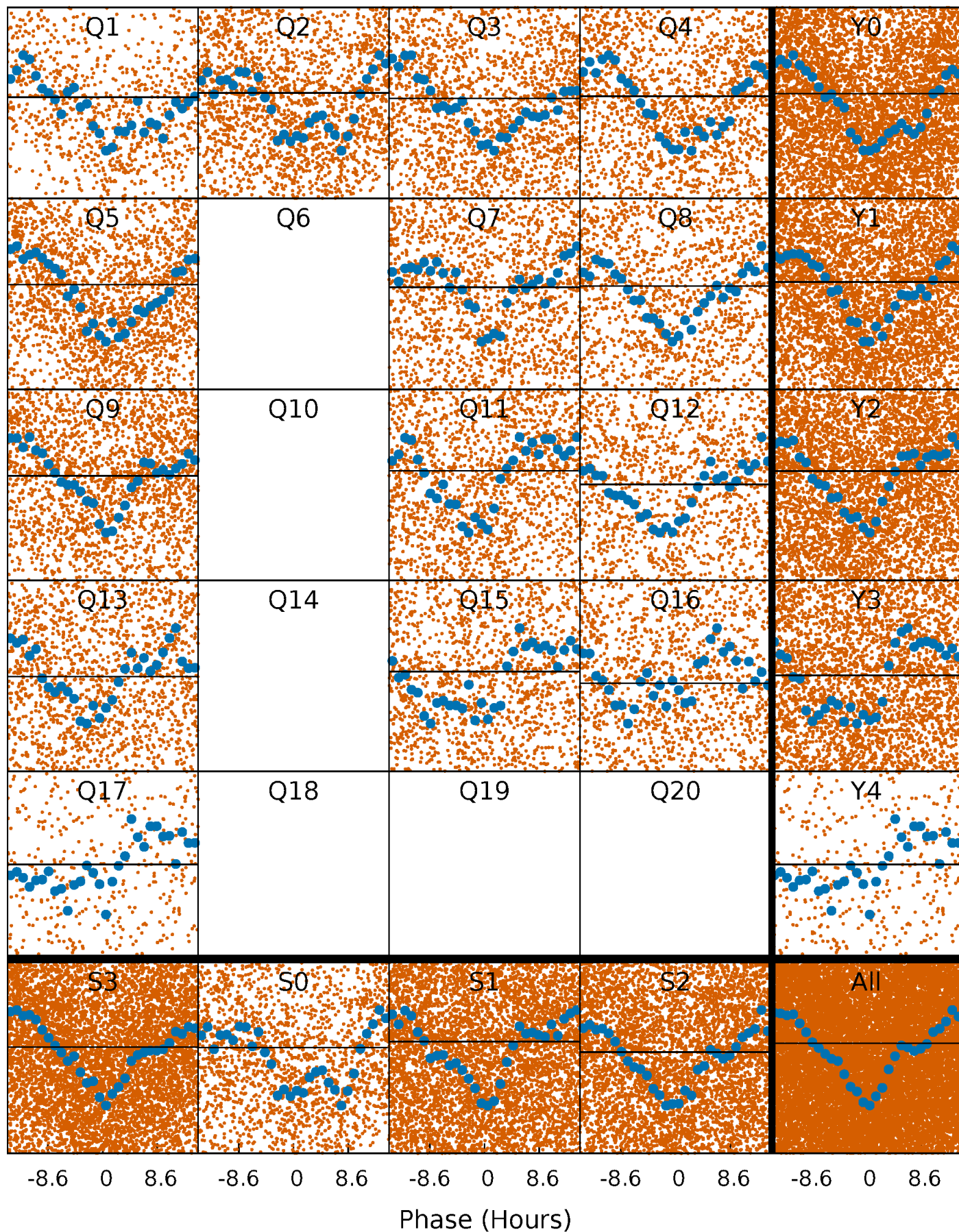
PDC Quarter-Phased Transit Curves

TCE 003658906-01 P= 2.165021 Days $T_0=131.940099$ (BKJD)



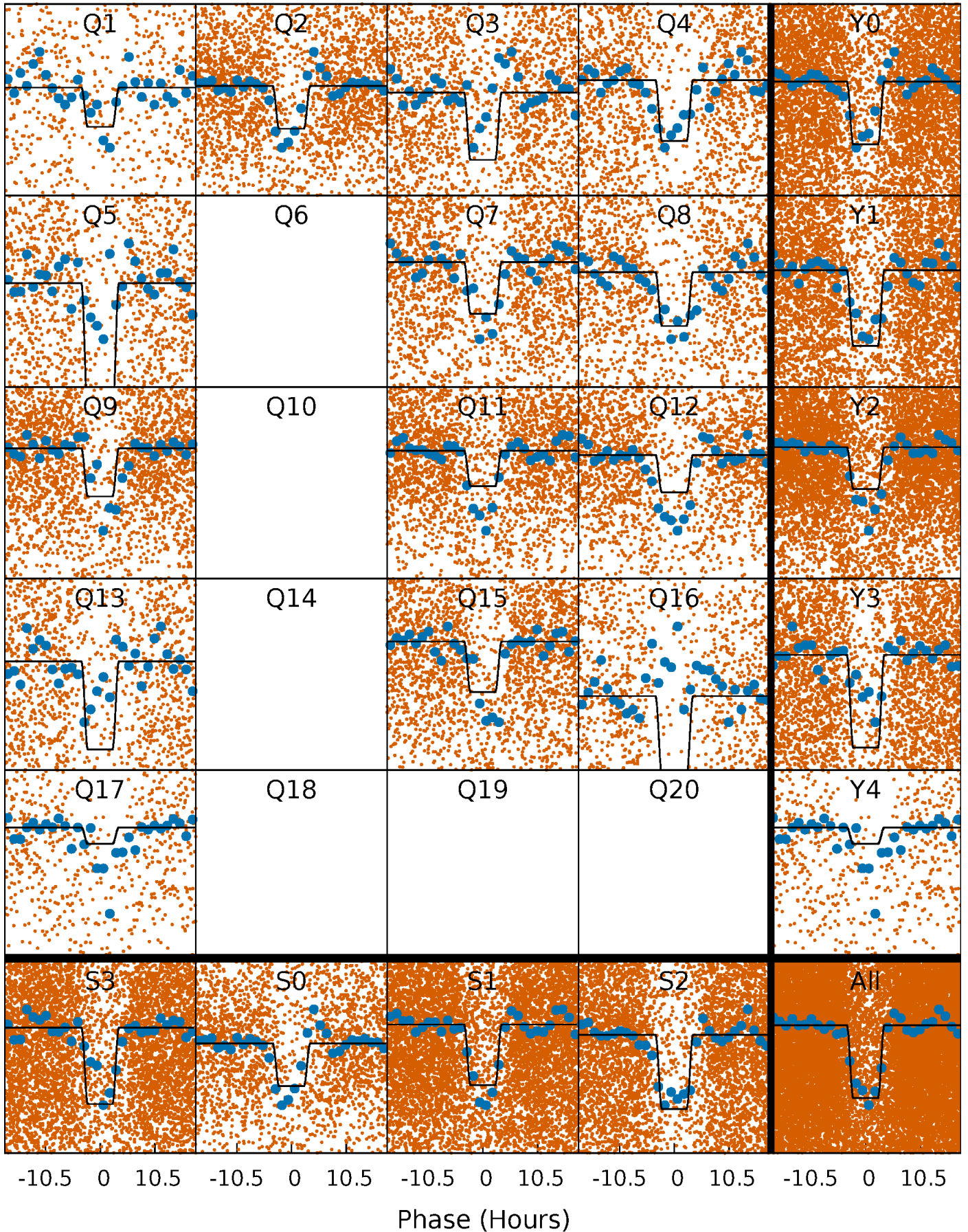
DV Quarter-Phased Transit Curves

TCE 003658906-01 P= 2.165021 Days $T_0=131.940099$ (BKJD)



Alt. Detrend Quarter-Phased Transit Curves

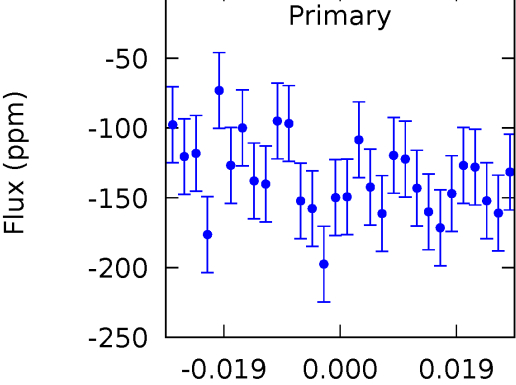
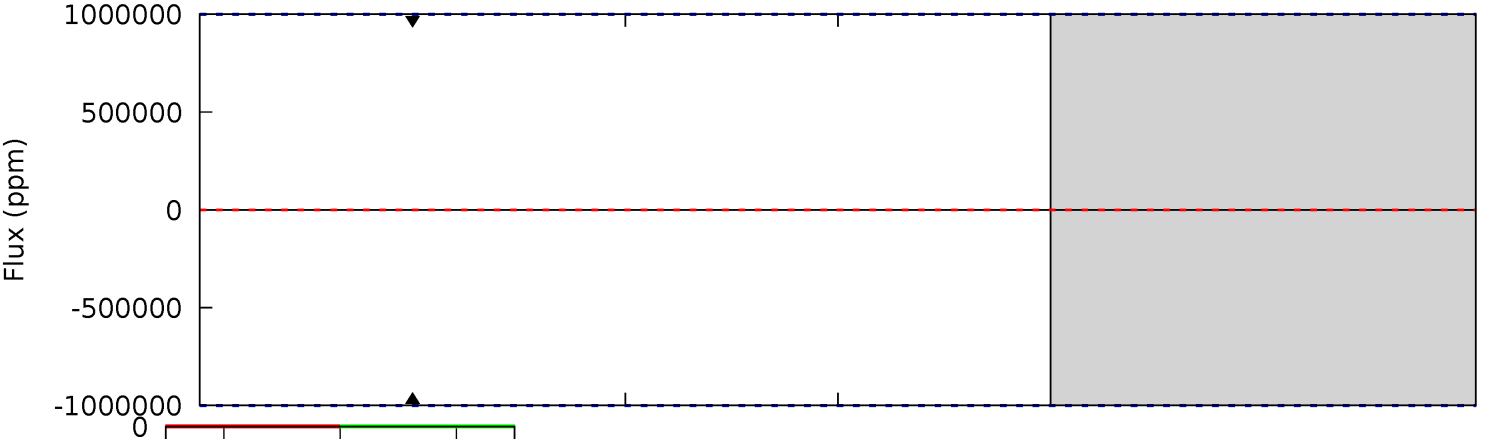
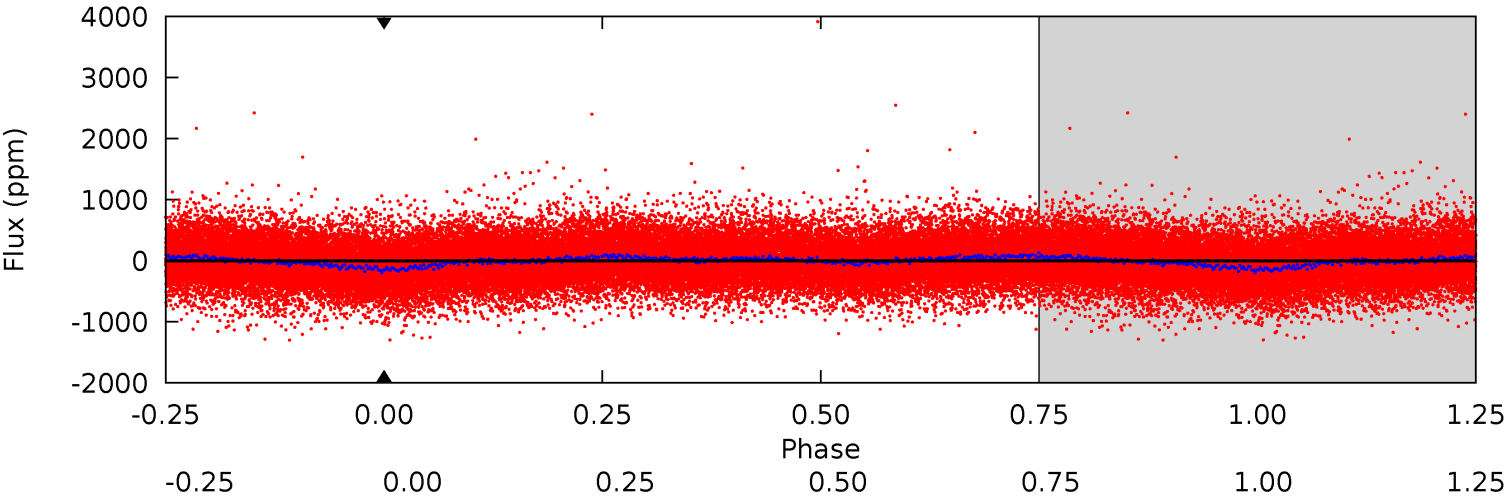
TCE 003658906-01 P= 2.165021 Days $T_0=131.924374$ (BKJD)



DV Model-Shift Uniqueness Test

003658906-01, P = 2.165021 Days, E = 129.775078 Days

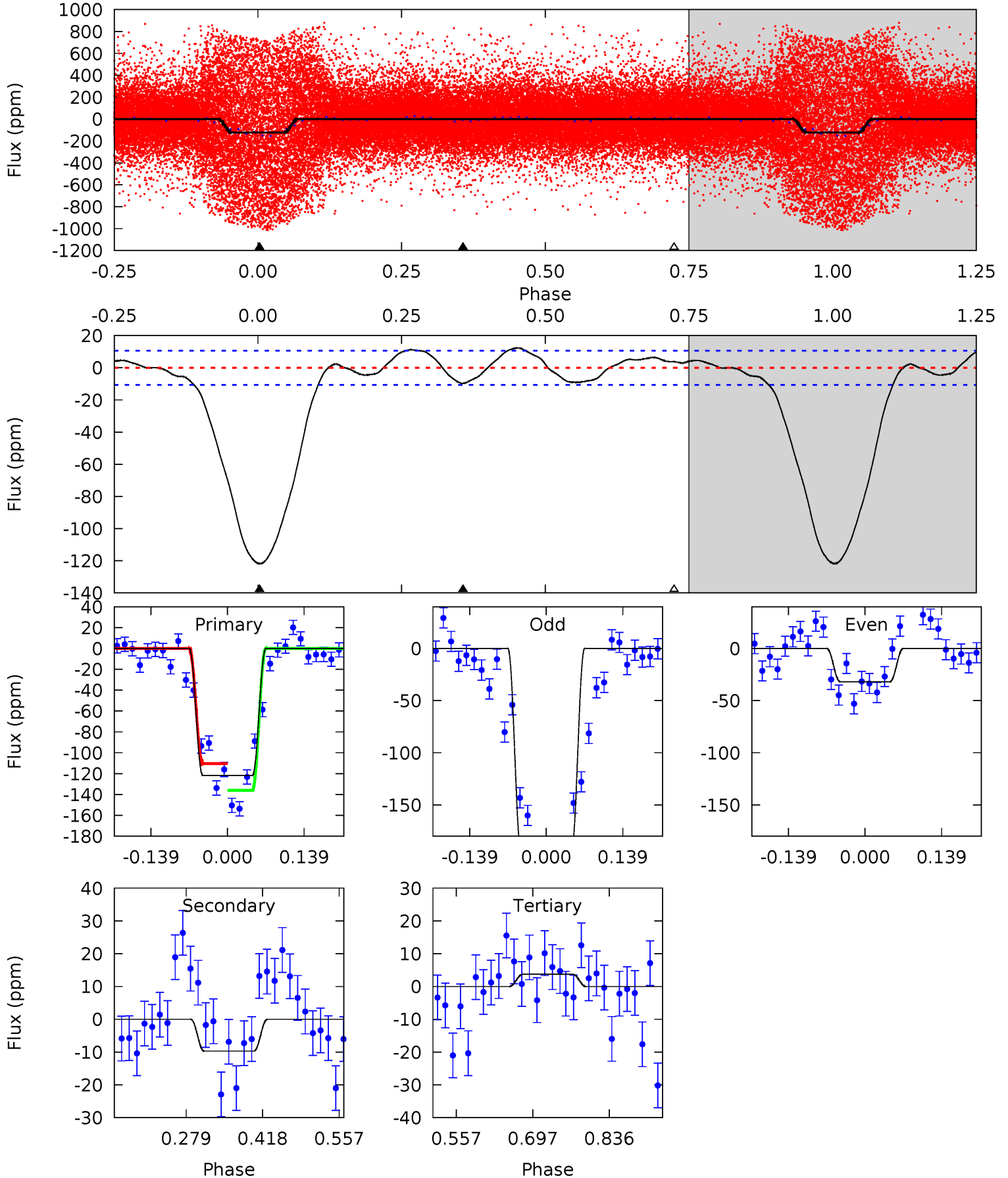
Pri	Sec	Ter	Pos	FA ₁	FA ₂	F _{Red}	Pri-Ter	Pri-Pos	Sec-Ter	Sec-Pos	Odd-Evn	DMM	Shape	TAT
0	0	0	0	1.00	1.00	1.00	0	0	0	0	0	0	0	0



Alt Model-Shift Uniqueness Test

003658906-01, P = 2.165021 Days, E = 129.759353 Days

Pri	Sec	Ter	Pos	FA ₁	FA ₂	F _{Red}	Pri-Ter	Pri-Pos	Sec-Ter	Sec-Pos	Odd-Evn	DMM	Shape	TAT
51.3	4.09	-1.56	0	4.49	1.48	1.94	52.9	51.3	5.66	4.09	34.2	0.79	0.09	5.33



Stellar Parameters For KIC 003658906

	$T_{\text{eff}}(K)$	$\log(g)$	[Fe/H]	R (R_{\odot})	$M(M_{\odot})$	p_{\star} ($\text{g}\cdot\text{cm}^{-3}$)
	6478^{+176}_{-176}	$3.433^{+0.391}_{-0.092}$	$-0.060^{+0.350}_{-0.250}$	$4.391^{+0.592}_{-1.894}$	$1.908^{+0.093}_{-0.397}$	$0.032^{+0.098}_{-0.010}$
	+3%/-3%	+11%/-3%	+583%/-417%	+13%/-43%	+5%/-21%	+309%/-30%
Source	PHO1	FLK73	KIC0	DSEP		

KIC = Kepler Input Catalog; PHO = Photometry; SPE = Spectroscopy; AST = Asteroseismology
 TRA = Transits; DESP = Dartmouth Models; MULT = Multiple Models

Secondary Eclipse Parameters for KIC 003658906-01 / KOI

Detrend	Depth (ppm)	R_p (R_{\oplus})	T_{max} (K)	T_{obs} (K)	A_{obs}
DV	0 ± 1000000	$30.81^{+33.74}_{-21.11}$	4090^{+223}_{-429}	3940^{+30812}_{-25924}	$0.676^{+206.372}_{-110.221}$
Alt.	-10 ± 2	$29.06^{+33.79}_{-21.22}$	4072^{+233}_{-457}	-3656^{+537}_{-185}	$0.010^{+0.125}_{-0.008}$

T_{max} = Theoretical Maximum Planetary Temperature
 T_{obs} = Observed Planetary Temperature (Assuming $A=0.3$)
 A_{obs} = Observed Albedo (Assuming $T=0$)

If a secondary eclipse is present, the system is likely an EB if $T_{obs} \gg T_{max}$ AND $A_{obs} \gg 1.0$

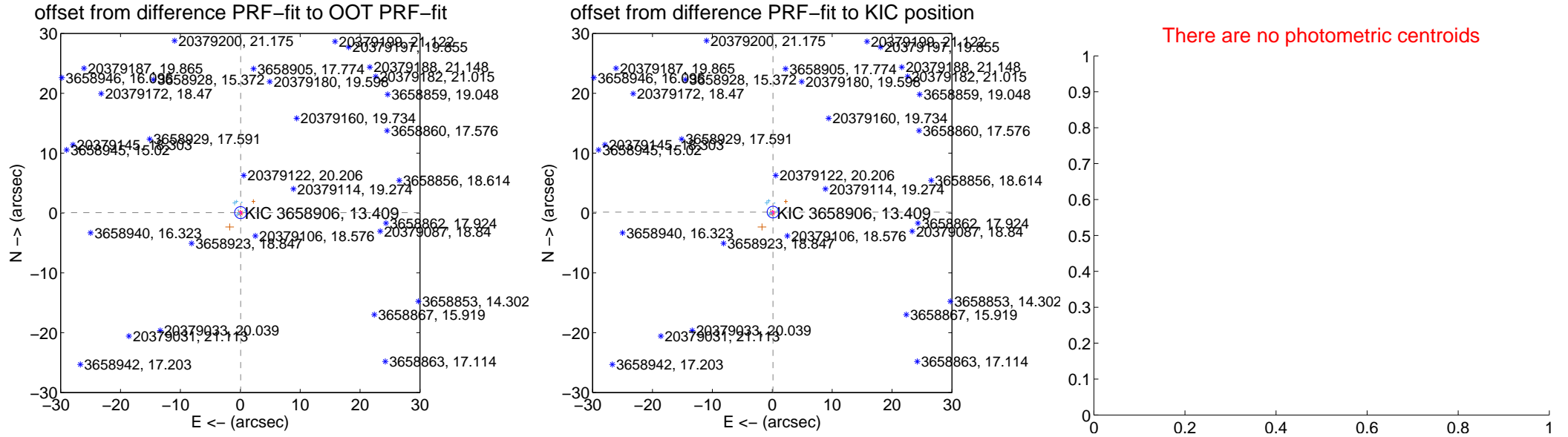
DV Centroid Data

Supplemental centroid analysis for 003658906-01. Kepler magnitude: 13.41. Transit SNR -1.00

There are 12 quarters with good PRF difference image offsets

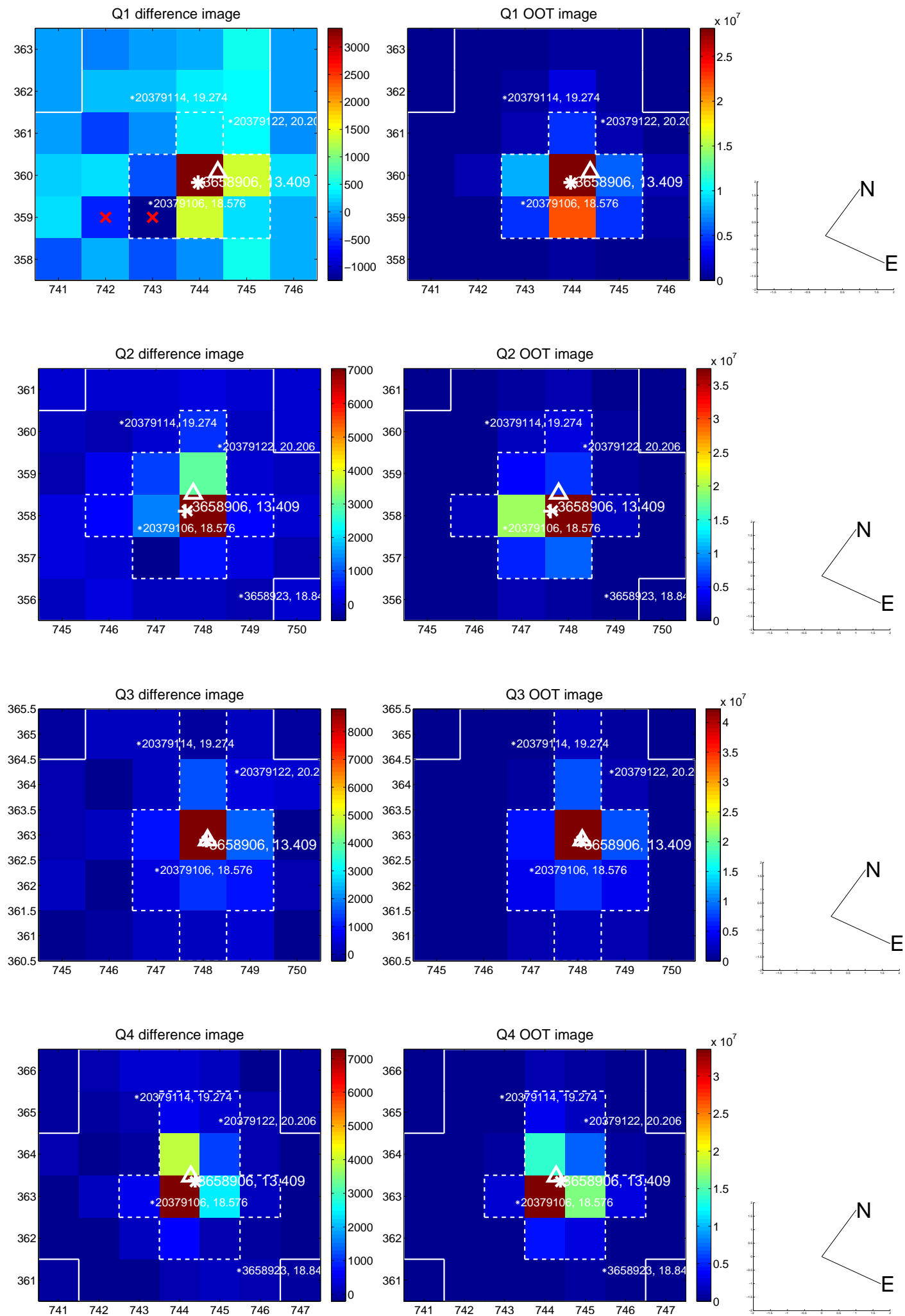
The direct PRF centroid is offset from the target star catalog position by about 0.08 arcsec

	Distance in arcsec	Distance / σ	Δ RA	Δ Dec
PRF-fit source offset from OOT	0.087 ± 0.334	0.26	-0.058 ± 0.237	0.065 ± 0.315
PRF-fit source offset from KIC position	0.197 ± 0.327	0.60	-0.126 ± 0.241	0.152 ± 0.302
photometric centroid source offset	—	—	—	—

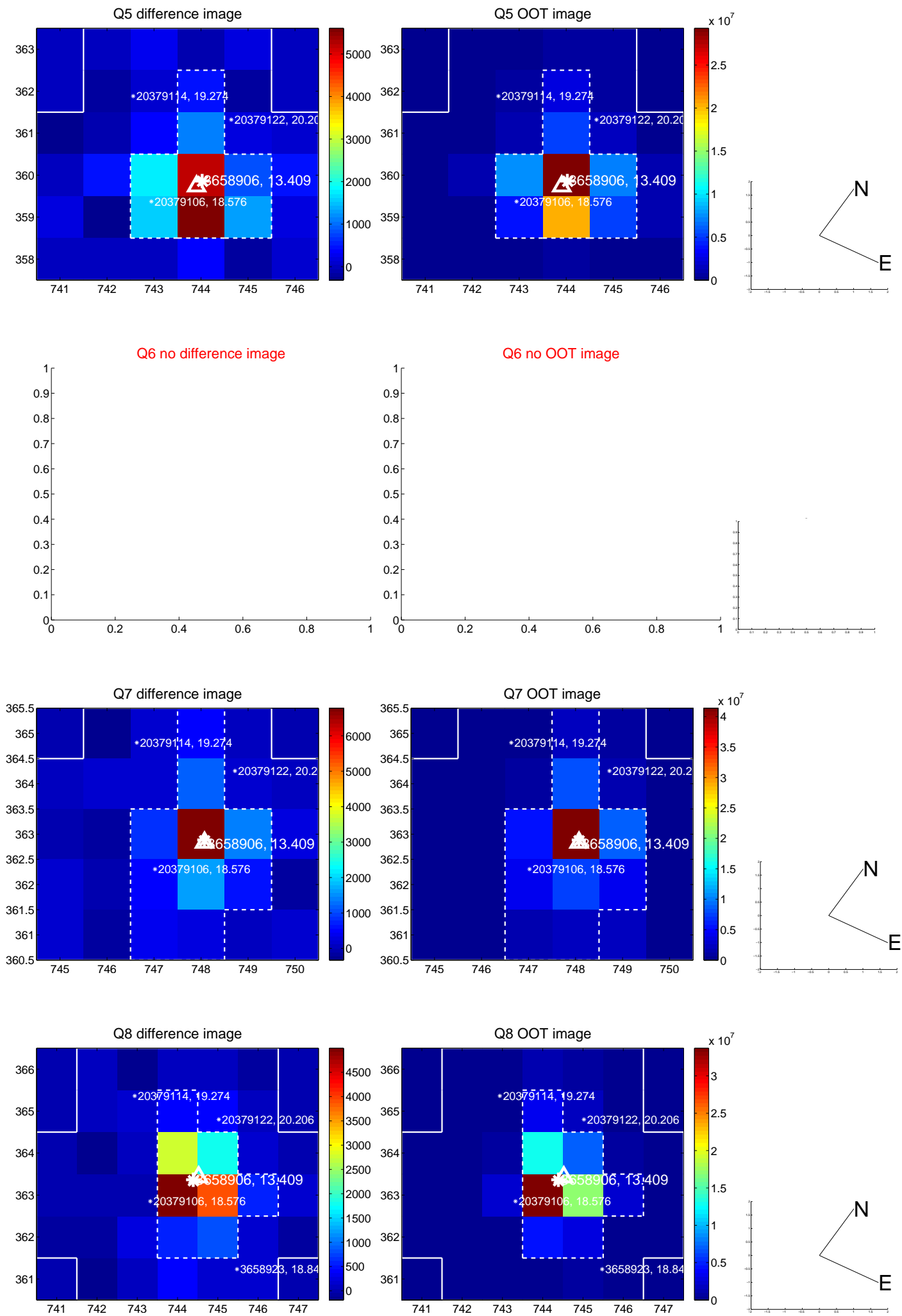


Centroid source offsets from the target star reconstructed from PRF and photometric centroids. **Sky blue crosses:** good quarterly centroid offsets; **Vermillion crosses:** bad quarterly centroid offsets; magenta cross: average over quarters. Length of the crosses: one- σ uncertainty. Blue circle: three- σ . Red *: target star. Blue *: Other stars. Text next to a star gives its KIC ID and kepmag. KIC IDs > 15,000,000 are from the UKIRT catalog.

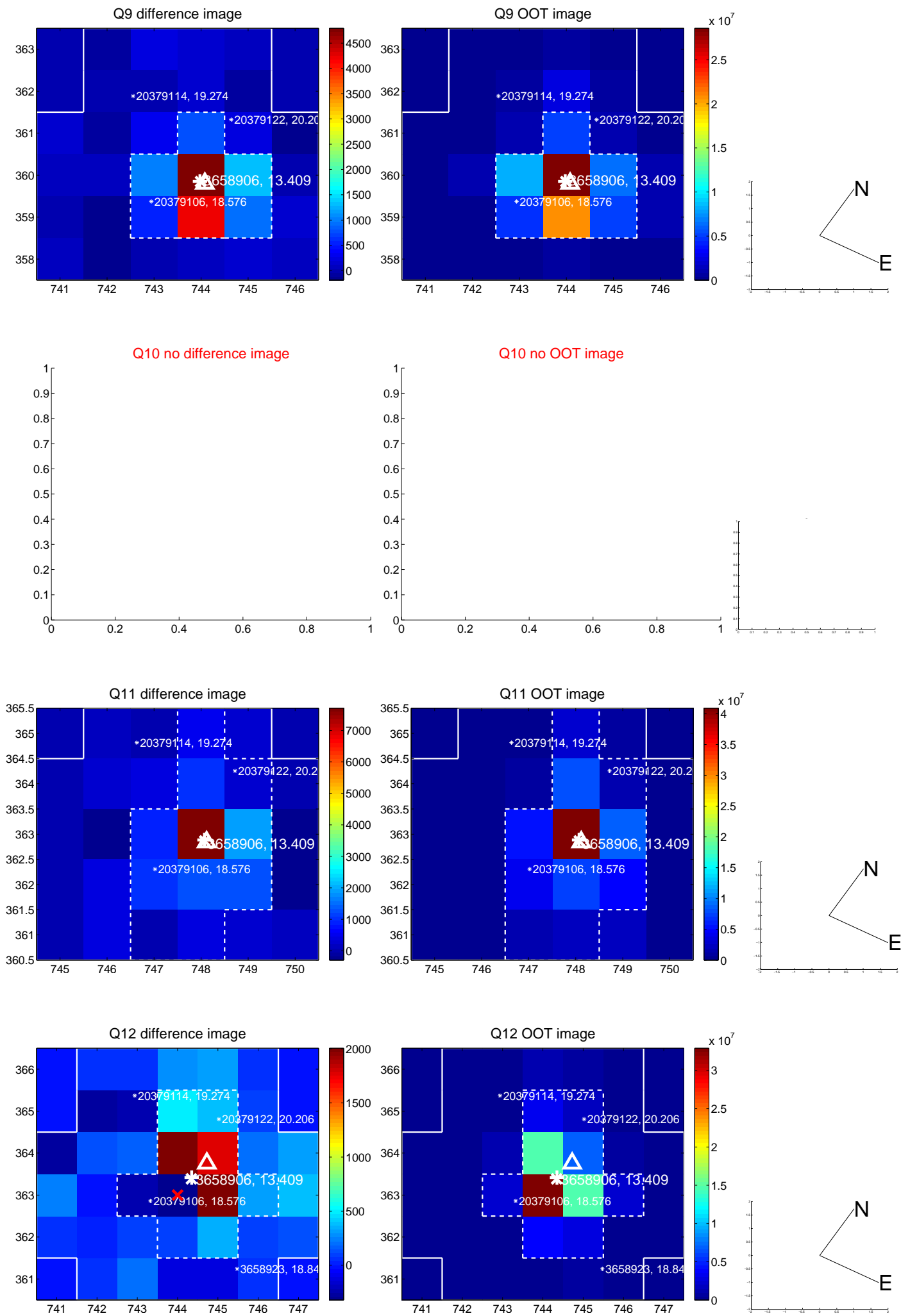
white \times : KIC target position; +: OOT centroid; \triangle : difference centroid. red \times : large negative pixel value.



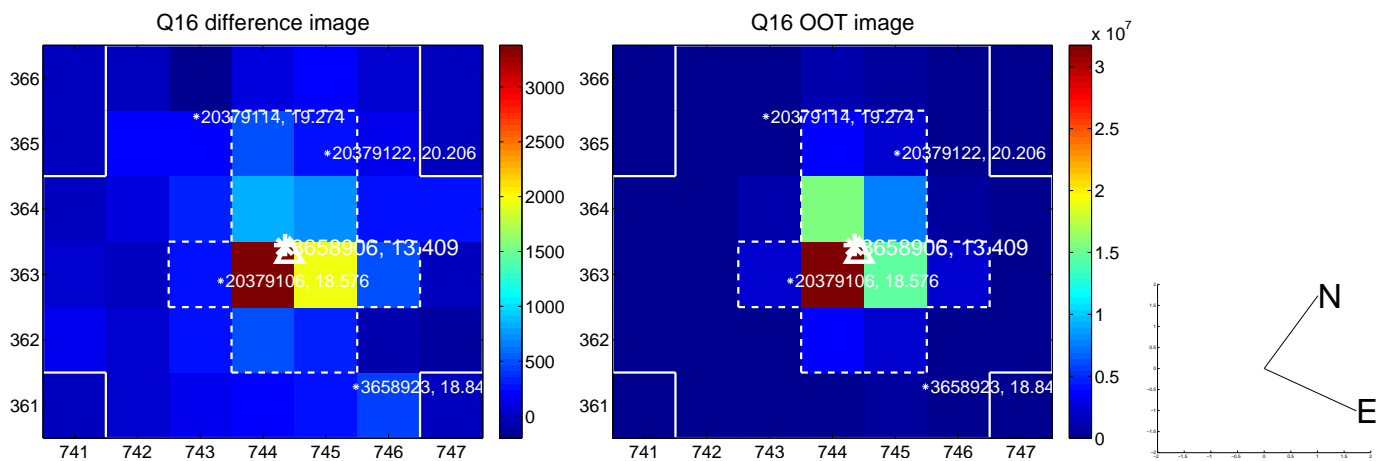
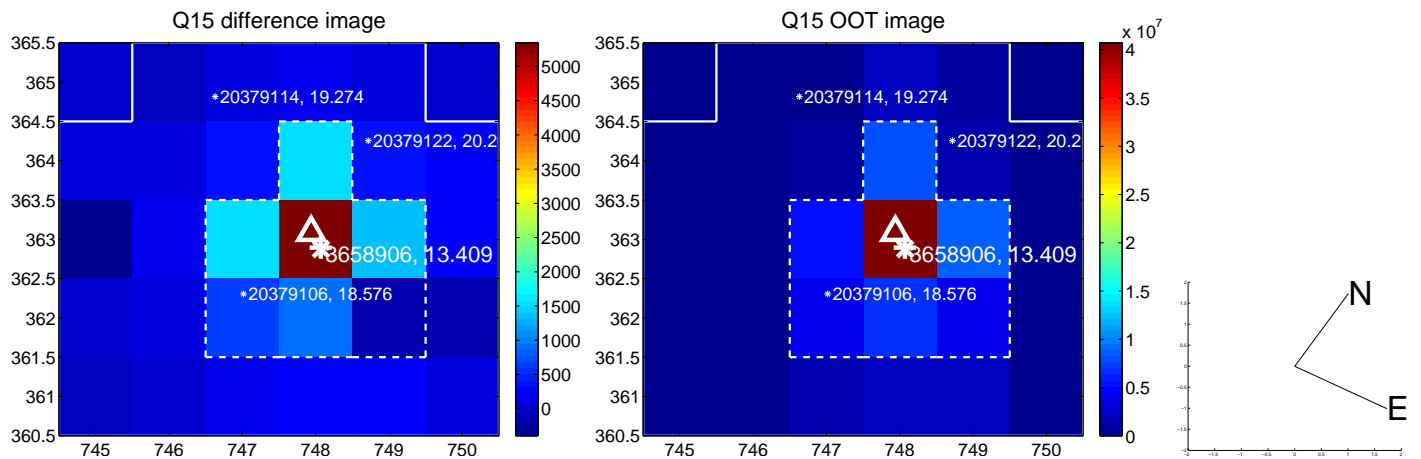
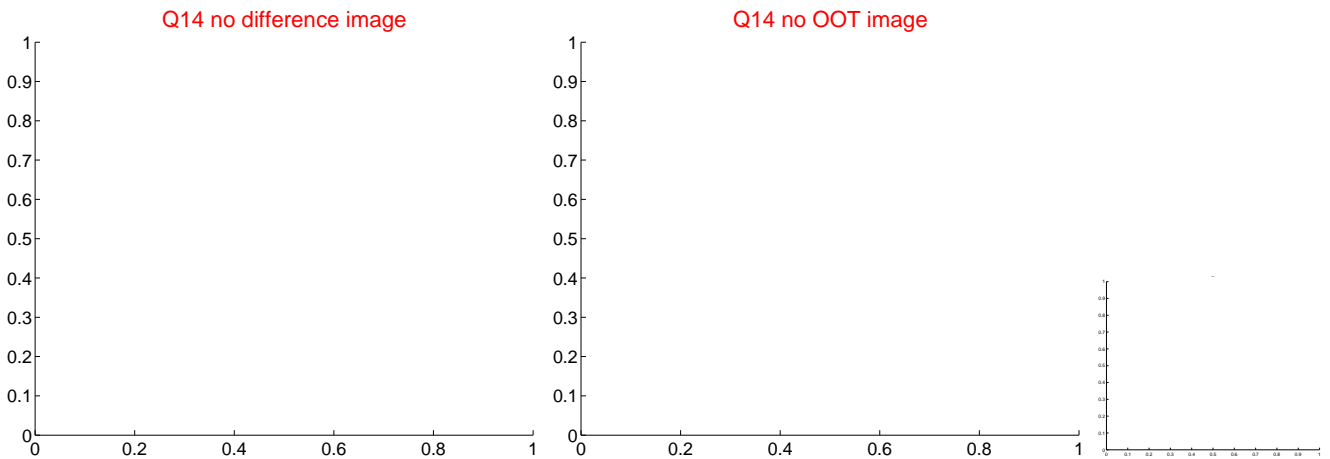
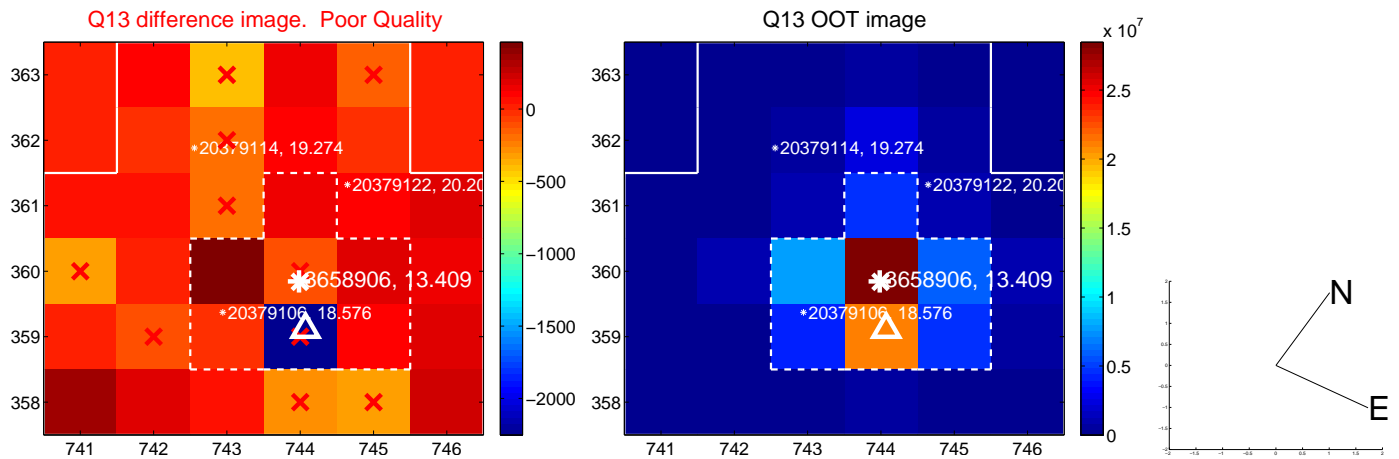
white \times : KIC target position; +: OOT centroid; \triangle : difference centroid. red \times : large negative pixel value.



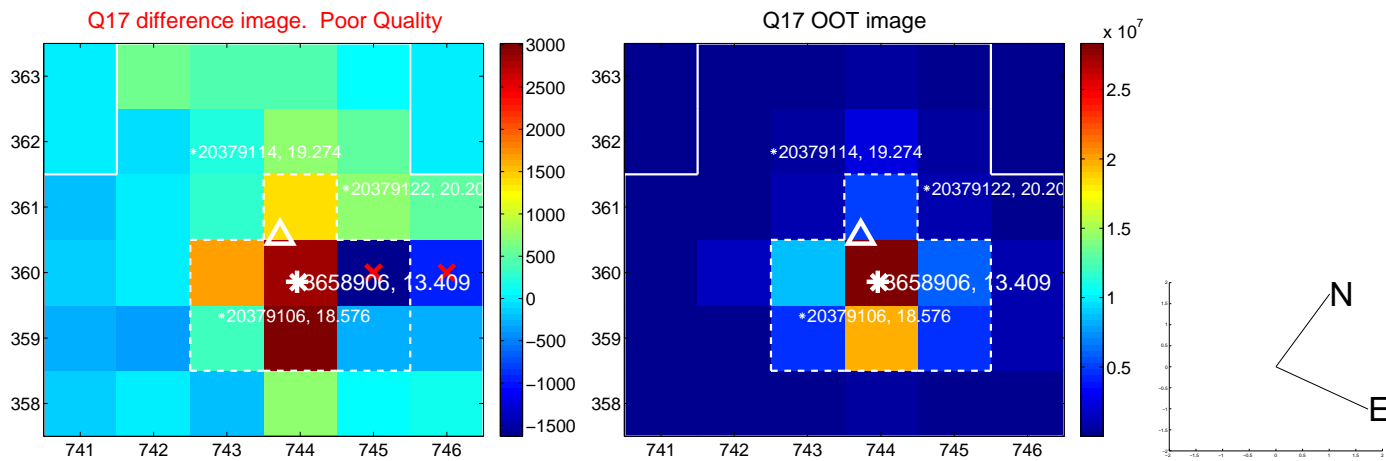
white \times : KIC target position; +: OOT centroid; \triangle : difference centroid. red \times : large negative pixel value.



white \times : KIC target position; +: OOT centroid; \triangle : difference centroid. red \times : large negative pixel value.



white \times : KIC target position; $+$: OOT centroid; \triangle : difference centroid. red \times : large negative pixel value.



folded centroid time series figure for this object.

UKIRT Image

