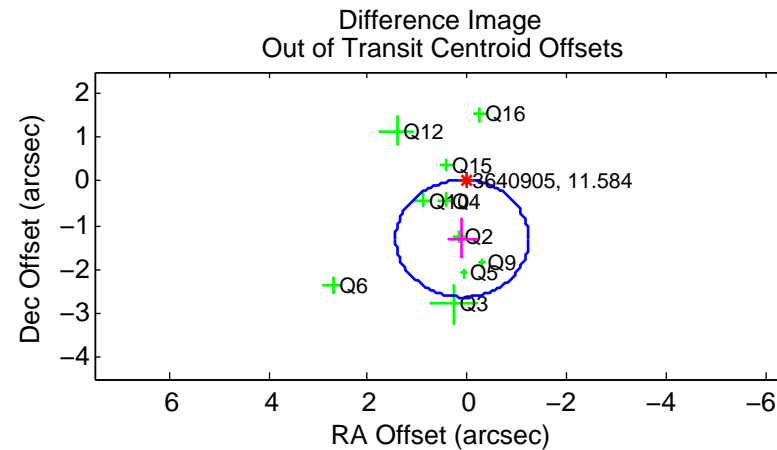
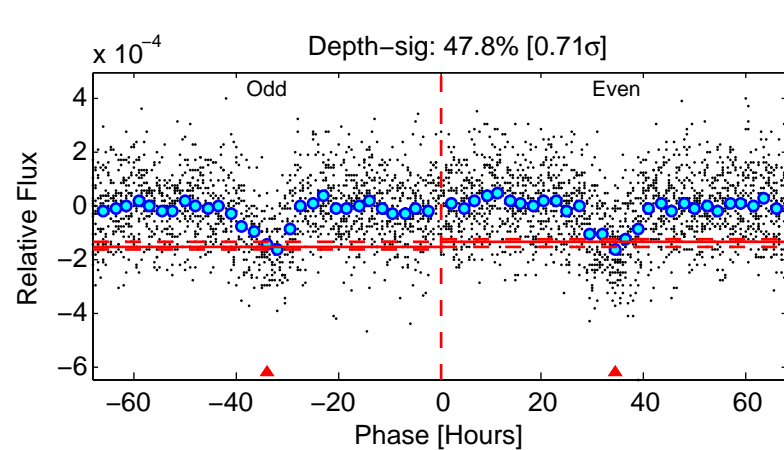
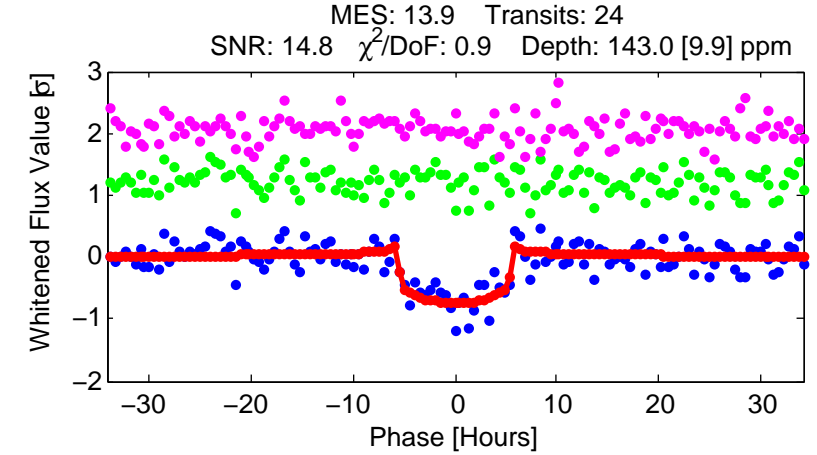
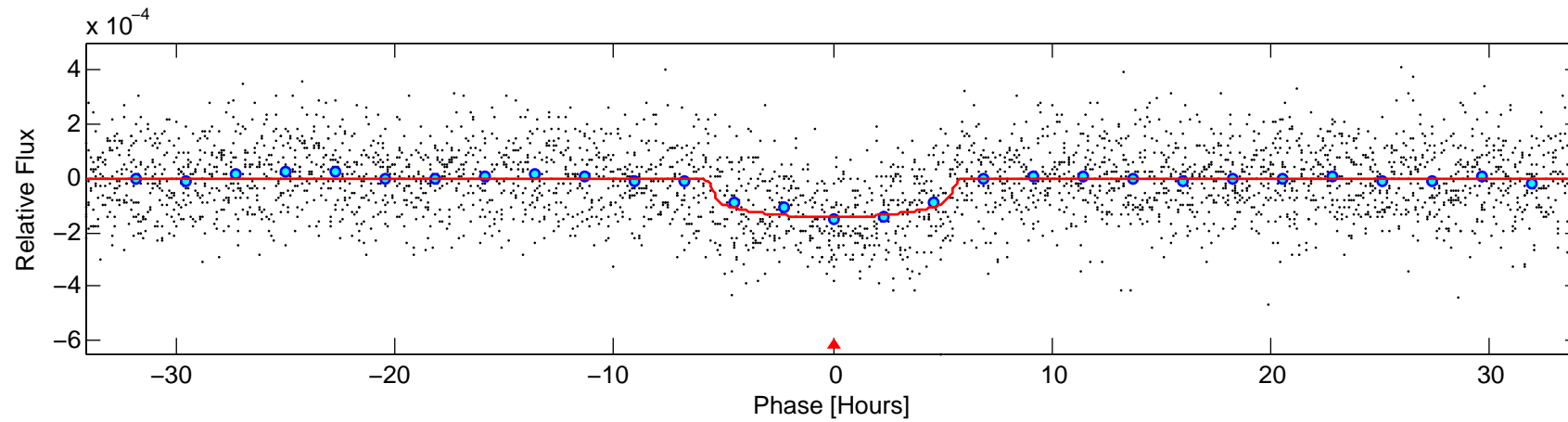
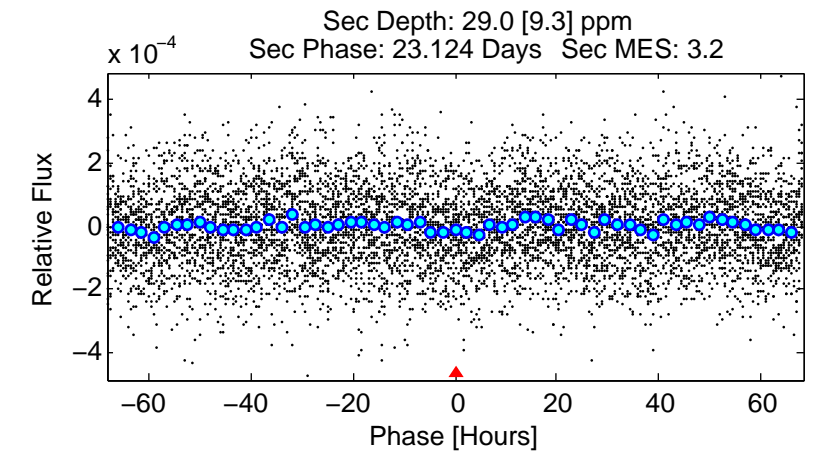
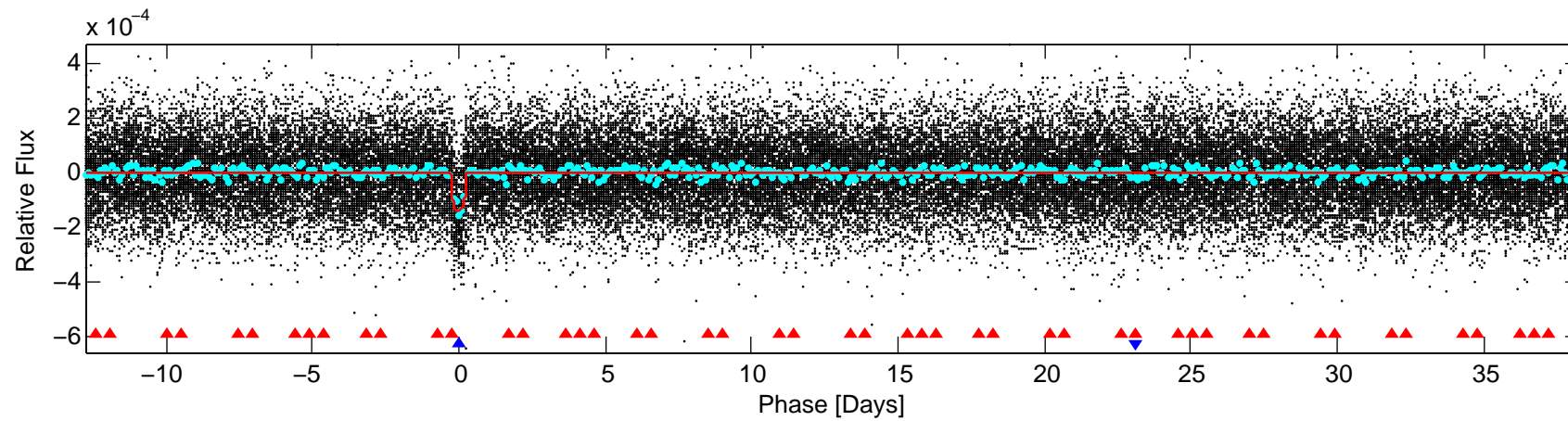
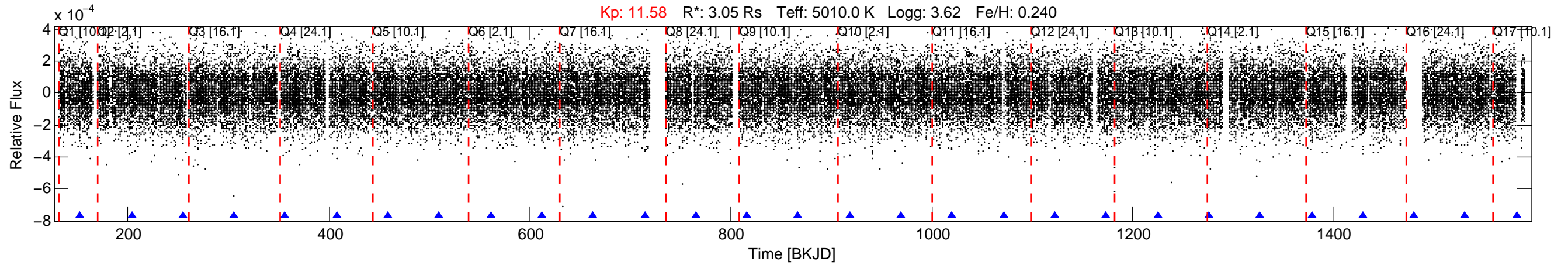


KIC: 3640905 Candidate: 2 of 2 Period: 51.077 d
 KOI: K01221.02 Name: Kepler-278c Corr: 0.965



DV Fit Results:

Period = 51.07746 [0.00055] d
 Epoch = 152.3521 [0.0085] BKJD
 Rp/R* = 0.0120 [0.0032]
 a/R* = 22.96 [22.21]
 b = 0.76 [0.55]
 Seff = 57.40 [8.71]
 Teq = 702 [27] K
 Rp = 3.99 [1.20] Re
 a = 0.3026 [0.0301] AU
 Ag = 91.62 [58.82] [1.54σ]
 Teffp = 3357 [533] K [4.98σ]

DV Diagnostic Results:

ShortPeriod-sig: 100.0% [36.35σ]
 LongPeriod-sig: N/A
 ModelChiSquare2-sig: 68.7%
 ModelChiSquareGof-sig: 100.0%
 Bootstrap-pfa: 3.90e-41
 RollingBand-fgt: 1.00 [23/23]
 GhostDiagnostic-chr: -41.12
 Centroid-sig: 57.3%
 Centroid-so: 0.278 arcsec [0.69σ]
 OotOffset-rm: 1.309 arcsec [2.94σ]
 KicOffset-rm: 1.195 arcsec [2.49σ]
 OotOffset-st: 3/2/3/2 [10]
 KicOffset-st: 3/2/3/2 [10]
 DiffImageQuality-fgm: 0.70 [7/10]
 DiffImageOverlap-fno: 0.93 [13/14]