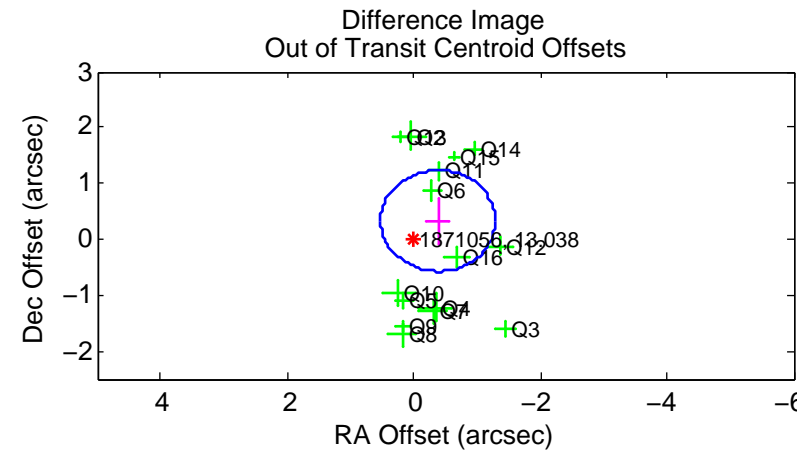
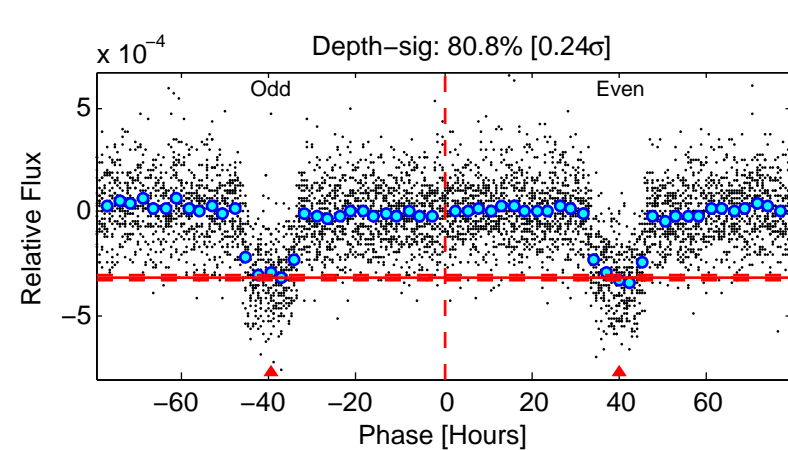
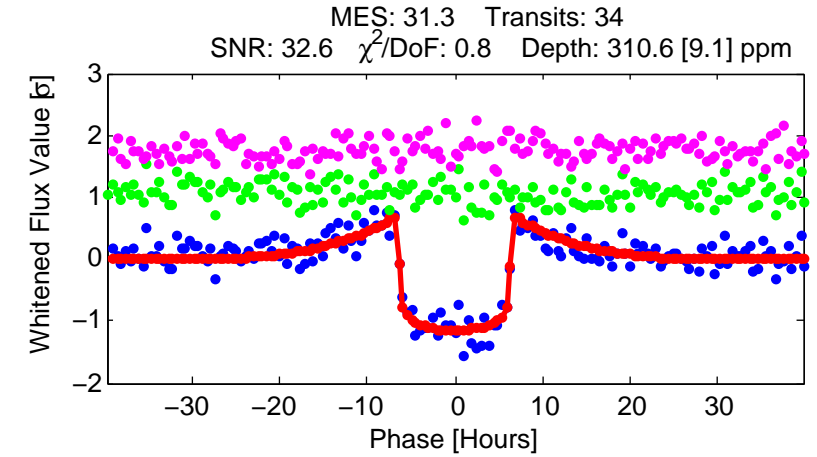
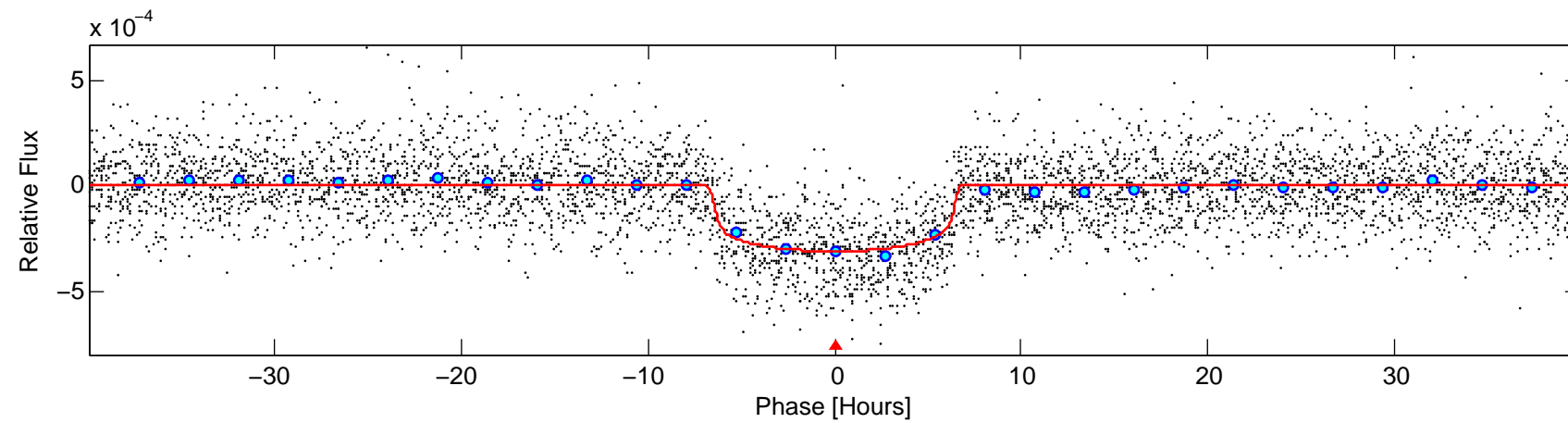
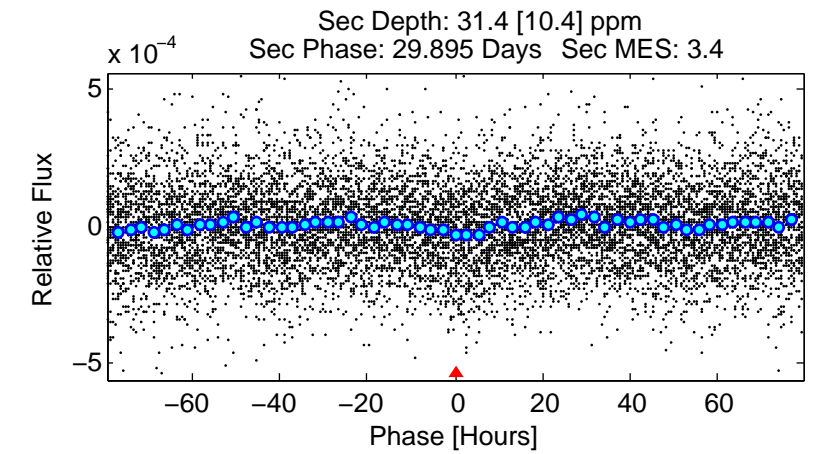
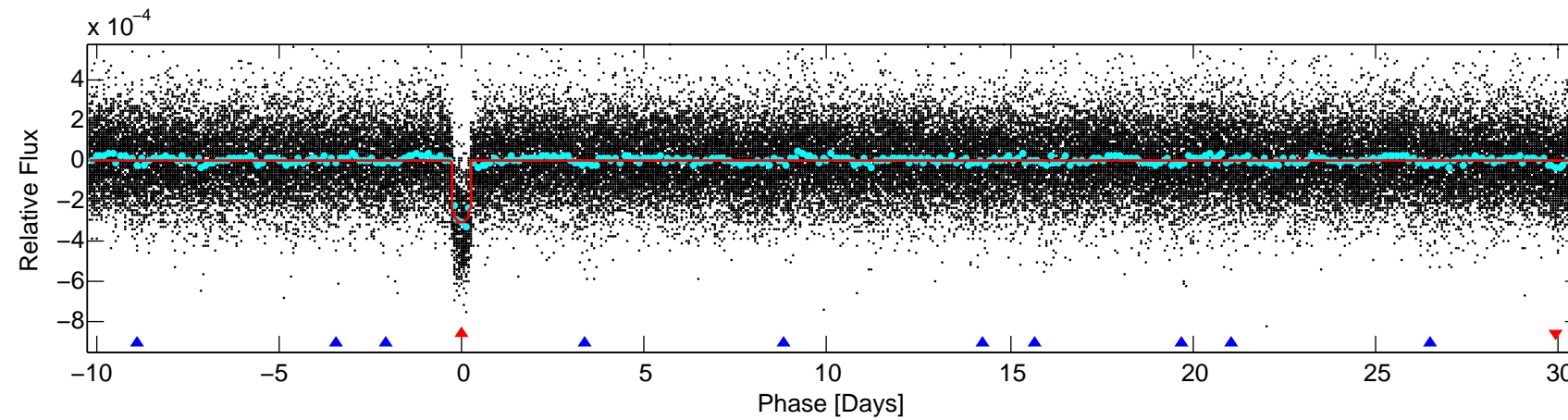
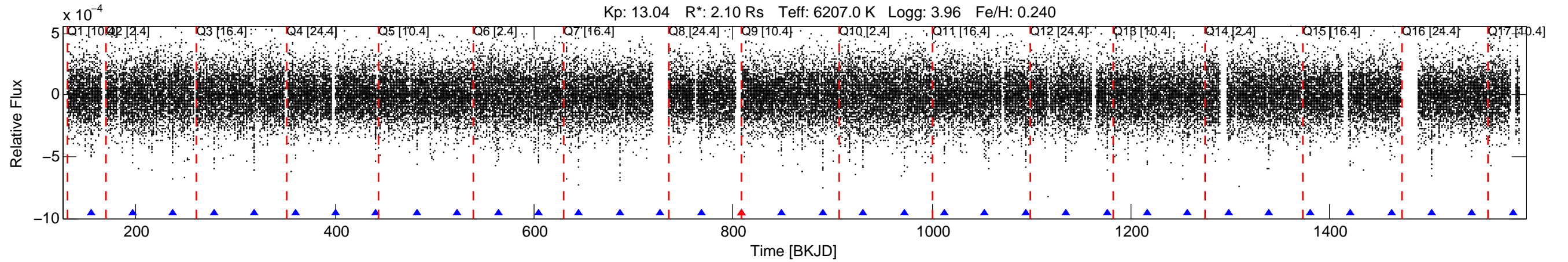


KIC: 1871056 Candidate: 1 of 2 Period: 40.806 d  
 KOI: K01001.01 Name: Kepler-264b Corr: 0.991



#### DV Fit Results:

Period = 40.80633 [0.00020] d  
 Epoch = 155.7205 [0.0038] BKJD  
 Rp/R\* = 0.0172 [0.0015]  
 a/R\* = 17.47 [7.43]  
 b = 0.69 [0.32]  
 Seff = 83.92 [30.12]  
 Teq = 772 [69] K  
 Rp = 3.94 [1.12] Re  
 a = 0.2640 [0.0620] AU  
 Ag = 77.65 [39.80] [1.93σ]  
 Teffp = 3542 [339] K [8.00σ]

#### DV Diagnostic Results:

ShortPeriod-sig: N/A  
 LongPeriod-sig: 100.0% [101.87σ]  
 ModelChiSquare2-sig: 79.0%  
 ModelChiSquareGof-sig: 100.0%  
 Bootstrap-pfa: 1.49e-178  
 RollingBand-fgt: 0.97 [32/33]  
 GhostDiagnostic-chr: 3.27  
 Centroid-sig: 18.7%  
 Centroid-so: 0.877 arcsec [2.88σ]  
 OotOffset-rm: 0.501 arcsec [1.66σ]  
 KicOffset-rm: 0.385 arcsec [1.33σ]  
 OotOffset-st: 4/4/4/3 [15]  
 KicOffset-st: 4/4/4/3 [15]  
 DiffImageQuality-fgm: 0.93 [14/15]  
 DiffImageOverlap-fno: 1.00 [16/16]